

Hypoxia Induced DNA Damage in Children with Isolated Septal Defect and Septal Defect with Great Vessel Anomaly of Heart

VIDYA G.¹, SUMA H.Y.², VISHNU BHAT B.³, PARKASH CHAND⁴, RAMACHANDRA RAO K.⁵

ABSTRACT

Background and Aim: In Congenital Heart Disease (CHD), shunting of blood occurs through the anatomical defects which lead to mixing of oxygenated and deoxygenated blood. Chronic hypoxia which occurs due to the above said mechanism has the potency to cause DNA damage in children with CHD. In chronic hypoxia, there is a liberation of Reactive Oxygen Species (ROS) due to tissue injury as a result of ischemia and induction of hypoxia inducible factor - 1HIF-1 and p53 which in turn activates pro-apoptotic factors leading to alteration in the regulation of pro-apoptotic gene Bcl-2 to be involved in causing the DNA damage. The extent of chronic hypoxia and the DNA damage depends on the nature of the anatomical heart defect. Hence, the present case-control study was conducted to find out the DNA damage in children with isolated septal defect and septal defect with great vessel anomaly of heart and to compare the same.

Materials and Methods: The study group was categorized into

those with isolated septal defects and septal defects associated with great vessel anomaly based on echo-cardiogram. Age and sex matched healthy children were taken as controls. Single-cell gel electrophoresis - Comet Assay of Alkaline Version was performed conventionally and the comets were analyzed using comet score software.

Results and Conclusion: The comet metrics was found to be statistically significant in children with isolated septal defect and septal defect with great vessel anomaly when compared with that of the controls. In addition, comet metrics also showed significantly increased DNA damage among children with septal defects associated with great vessel anomaly when compared to isolated septal defects. The data strongly suggests a linear correlation of severity of the anomaly involved with the degree of DNA damage as evidenced by lesser extent of DNA damage in isolated septal defect and greater in septal defect with great vessel anomaly.

Keywords: Isolated Septal Defect of heart (ISD), Septal Defect with Great Vessel Anomaly (SD with GVA), DNA damage, Comet Assay, Reactive Oxygen Species (ROS) and Hypoxia Inducible Factor – 1 (HIF 1)

INTRODUCTION

Congenital Heart Disease (CHD), either due to septal defect or great vessel anomaly is more prone for hypoxia [1,2]. Chronic hypoxia of CHD results in a down-regulation of antioxidant defenses, making cells vulnerable to oxidative damage [3]. The oxidative damage and impaired antioxidant defense results in an imbalance between the amount of oxygen supplied to the cell and the amount required which subsequently leads to the single strand breaks and oxidative DNA damage [4,5]. HIF-1 and p53 induced by hypoxia activates the pro-apoptotic factors which lead to the alteration in regulation of pro-apoptotic gene Bcl-2 to be also involved in causing the DNA damage [3]. The hemodynamic disturbances in CHD depend on the nature of the anatomical defects involved [1]. Studies regarding DNA damage through comet assay on individuals with Tetralogy of Fallot (TOF) [3] and on children with all types of cardiac anomalies [2] showed a positive indication of oxidative DNA damage. The biochemical parameters of oxidative stress and DNA damage co-exist; the former has been studied intensively while in the latter no attempt was made with reference to the type/s of cardiac anomaly. Hence the present study was conducted to find out the DNA damage in children with isolated septal defect and septal defect with great vessel anomaly of heart and to compare the same.

MATERIALS AND METHODS

Study Subjects

This case-control study on children with congenital heart disease was conducted in the Cytogenetic laboratory, Department of Anatomy, JIPMER in collaboration with the Departments of Paediatrics after obtaining the approval from JIPMER Scientific

Advisory Committee and Institute Human Ethical Committees. Forty children with congenital heart disease were diagnosed clinically and confirmed by echocardiography, were included as cases and age and gender matched healthy children were included as the control group in the current study. The cases were categorized broadly into children with isolated septal defects and those with septal defects associated with great vessel anomaly based on the echocardiogram [Table/Fig-1a,1b] and [Table/Fig-2a,2b]. Written Informed Consent was obtained from the concerned parents pertaining to the investigation.

Sample Collection

One ml of peripheral venous blood was collected through heparinized syringe under strict aseptic conditions and isolation of lymphocytes was done by Density Gradient Separation Technique for performing comet assay.

Comet Assay

Widely accepted and conventionally followed protocol for Comet Assay [6,7] was performed on the blood samples collected. Lymphocytes isolated from the peripheral whole blood by using histopaque were suspended in low melting agarose which was transferred gently on glass slide pre-coated with normal melting agarose by using an identical sized coverslip for achieving uniform dispersion of cells over the pre-coated slides. The slides were transferred to refrigerator for few minutes and covered again with a fresh layer of normal melting agarose layer after removing the coverslip. The slides were then transferred to chilled lysis solution for overnight and were then subjected to electrophoresis in an alkaline buffer of pH 10 by using 300mA for 30 minutes. After neutralization with TRIS buffer followed by fixation with glycerol, Tri

Chloroacetic Acid (TCA) and Zinc Sulphate (ZnSo4) the slides were stained with the working solution of 60microgram of silver nitrate in 300ml of distilled water. The slides stained with silver nitrate were observed under a bright-field light microscope Olympus-BX 51-Japan for comets and the images were captured using CCD camera. The captured images of the comets were later analyzed using comet software–TritekcometscoreTM version 1.5.

Scoring of Comets

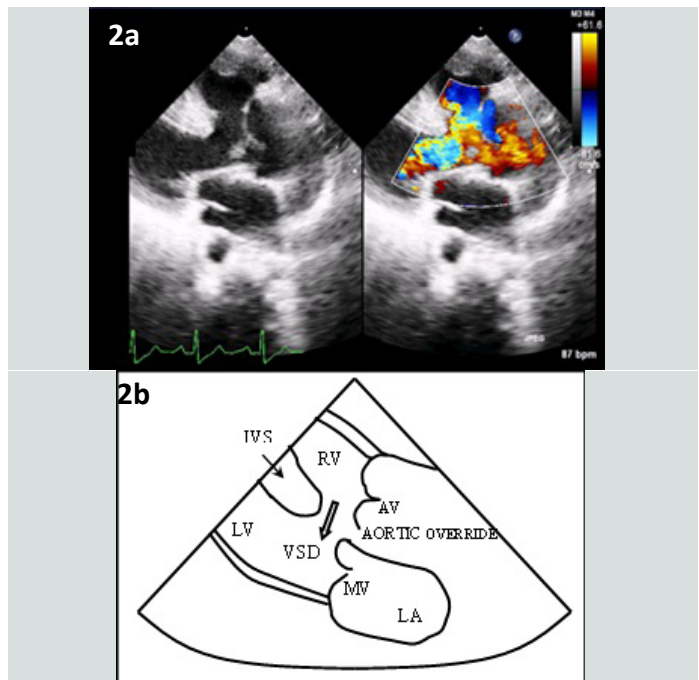
Fifty comets of various dimensions were selected randomly from each slide at 20 X magnification for analysis. The captured images [Table/Fig-3-5] were analyzed by using comet software. The Comet parameters that were measured and analyzed in the current study were–Total comet length (TCL), Head diameter (HD), % of DNA in head (%DH), Comet tail length (TL) and % of DNA in tail(%DT).

STATISTICAL ANALYSIS

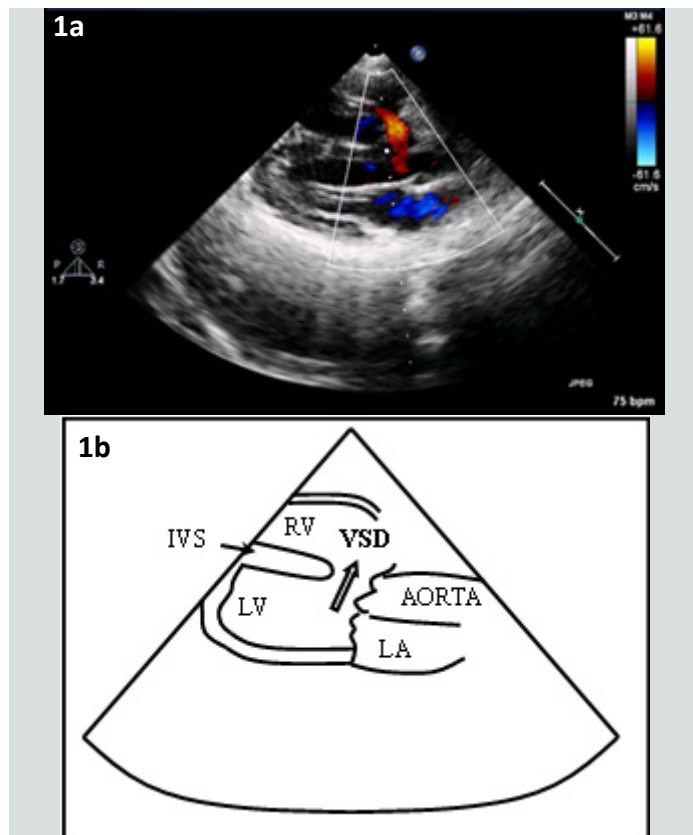
The parametric Unpaired t-test through SPSS-version 19 statistical software towards achieving the threshold significance of p<0.05 was followed.

RESULTS

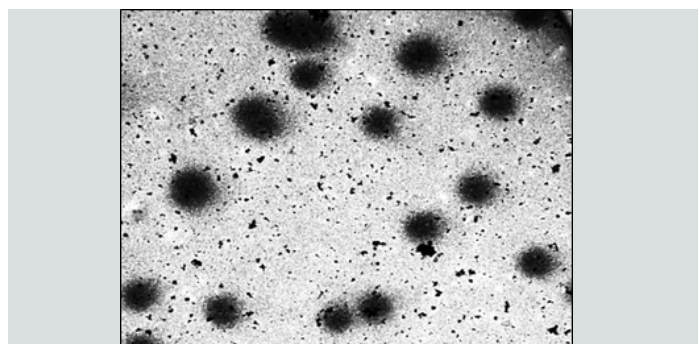
The distribution of cases among the study group is shown in the [Table/Fig-6], of the total cases of ISD, VSD alone comprised of 65%; while 70% of TOF in SD-GVA group [Table/Fig-6]. ISD with equal number of appropriately selected controls showed statistically significant data of comet metrics with regards to TCL, HD, TL, %DH and %DT with the p-value <0.05 [Table/Fig-7]. Similar significant difference was also observed in the other with reference to all parameters of comet except %DH [Table/Fig-8]. While correlating the ISD with SD–GVA group, the degree of damage was found to be much greater in SD-GVA group with reference to all comet metrics [Table/Fig-9].



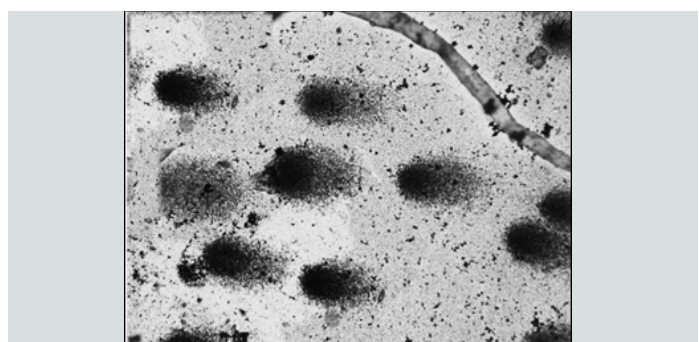
[Table/Fig-2a]: Parasternal long axis view 2D Color Doppler showing VSD and Aortic Override (Septal Defect with Great Vessel Anomaly)
[Table/Fig-2b]: Schematic representation of Parasternal long axis view 2D Color Doppler showing VSD and Aortic Override
 LA – Left Atrium, RV – Right Ventricle, LV – Left Ventricle, VSD – Ventricular Septal Defect, MV – Mitral Valve, IVS – Inter Ventricular Septum,, AV – Aortic Valve



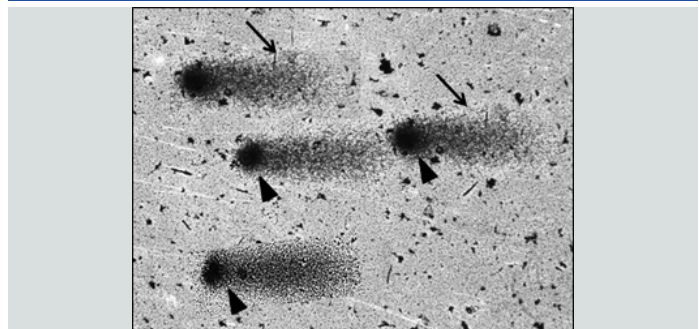
[Table/Fig-1a]: 2D color Doppler showing VSD (Isolated Septal Defect) with left to right shunt
[Table/Fig-1b]: Schematic representation of 2D color Doppler showing VSD with left to right shunt
 LA – Left Atrium, RV – Right Ventricle, LV – Left Ventricle, VSD – Ventricular Septal Defect, IVS – Inter Ventricular Septum



[Table/Fig-3]: Comets - Controls



[Table/Fig-4]: Comets – Isolated Septal Defect



[Table/Fig-5]: Comets – Septal Defect with Great Vessel Anomaly
 Black arrow heads – comet head, Black arrows – comet tail

Type of CHD		Number	Percentage
Isolated Septal Defect (ISD) (Acyanotic) (n=20)	VSD	13	65
	ASD	04	20
	VSD with ASD	03	15
Septal Defect with Great Vessel Anomaly (SD with GVA) (n=20)	TOF (Cyanotic)	14	70
	VSD with PDA	03	15
	ASD with PDA	03	15

[Table/Fig-6]: Distribution of CHD among cases

ISD – Isolated Septal Defect, SD with GVA – Septal Defect with Great Vessel Anomaly, ASD – Atrial Septal Defect, VSD – Ventricular Septal Defect, PDA – Patent Ductus Arteriosus, TOF – Tetralogy of Fallot

Study Group	Total Comet Length (µm)	Head Diameter (µm)	Comet Tail Length (µm)	% DNA in Head	% DNA in Tail
ISD (n=20)	69.20±15.15	49.53±10.66	19.69±12.13	88.29±3.68	11.71±3.68
Control (n=20)	30.08±5.31	29.32±5.27	0.79±1.70	88.67±7.70	10.50±8.11
p-value	p < 0.05	p < 0.05	p < 0.05	p < 0.05	p < 0.05

[Table/Fig-7]: Comparison of Comet metrics between children with isolated septal defect of heart and Controls.

All Comet metrics were expressed in mean ± SD

Study Group	Total Comet Length (µm)	Head Diameter (µm)	Comet Tail Length (µm)	% DNA in Head	% DNA in Tail
SD with GVA (n=20)	78.16±20.53	53.31±10.86	29.02±17.96	85.58±5.67	18.57±5.00
Control (n=20)	30.42±5.44	29.46±5.27	1.04±1.70	88.67±7.70	11.33±7.70
p-value	p < 0.05	p < 0.05	p < 0.05	p > 0.05	p < 0.05

[Table/Fig-8]: Comparison of Comet metrics between children with septal defect associated with great vessel of heart and Controls.

All Comet metrics were expressed in mean ± SD

Study Group	Total Comet Length (µm)	Head Diameter (µm)	Comet Tail Length (µm)	% DNA in Head	% DNA in Tail
ISD (n=20)	69.20±15.15	49.53±10.66	19.69±12.13	88.29±3.68	11.71±3.68
SD with GVA (n=20)	78.16±20.53	53.31±10.86	29.02±17.96	85.58±5.67	18.57±5.00
p-value	p < 0.05	p < 0.05	p < 0.05	p < 0.05	p < 0.05

[Table/Fig-9]: Comparison of Comet metrics between children with isolated septal defect and septal defect associated with great vessel of heart. All Comet metrics were expressed in mean ± SD

DISCUSSION

The oxidative stress markers that commonly measured are malonyldialdehyde, plasma catalase, total antioxidant status, total oxidant status and oxidative stress index. There is a difference of opinion with reference to the level of oxidative stress between cyanotic and acyanotic CHD. Ercan et al., [5] are of the opinion that the oxidative stress estimated through biochemical means

was marginally increased when compared to controls in VSD - acyanotic [5]. The same phenomenon was observed in the current series of ISD which includes VSD, ASD and VSD with ASD with reference to data of TCL, HD, TL, %DH and %DT. Similar observation of statistically significant levels of DNA damage was also seen in the other group which comprises of SD with GVA – which includes TOF – with cyanosis, VSD with PDA and ASD with PDA.

The DNA damage seen/ calibrated appears to be more extensive and severe in SD with GVA when compared with cases exclusively of ISD. The data is agreeing with the findings of oxidative stress estimated by Srujana et al., [3] with reference to the comet tail length in TOF and biochemically estimated oxidative stress put forth by Ercan et al., [5] for VSD and TOF. Therefore, it is apparent as the severity of the disease progress in terms of complexity of the structural defects of cardiac playing a major role for altered configuration of comets in cases investigated expressed in terms of increase in DNA damage.

The results of the present study are also in agreement with the findings of Rokicki et al., [8] with regards to the oxidant and anti-oxidants levels in infants and neonates less than one year. The anti-oxidants measured by earlier workers were glutathione peroxidase, catalase, superoxide dismutase, Vitamin E, uric acid and selenium and the oxidant- MDA. Of which glutathione peroxidase and MDA showed an imbalance between them in cases of cyanotic heart disease. In addition, both cyanotic and acyanotic cases showed very low levels of circulating Vitamin-E (anti-oxidant) [8]. Though the methodology for estimation of the oxidative stress is different in the current study, the level of oxidative stress was found to be consistent with that of Rokicki et al., [8]; with regards to DNA damage caused.

CONCLUSION

To conclude, there is a strong evidence of hypoxia induced DNA damage in individuals of isolated septal defect and septal defect associated with great vessel anomaly of the heart in cases investigated with profound damage in the later.

REFERENCES

- [1] Kliegman M, Jenson B, Behuman E, Stanton F. Nelson Textbook of Pediatrics, 18th ed. USA: Saunders Elsevier. 2007; 1878-940.
- [2] Vidya G, Suma HY, Bhatt BV, Parkash Chand, Rao KR, et al. Estimation of DNA damage through Comet in children with Congenital Heart Disease-Case-control study. Under publication in *CurrPaediatr Res*. 2014; 18(1).
- [3] Srujana K, Begum S, Nageshwara Rao K, Gundimeda, Sandhya Devi G, et al. Application of comet assay for assessment of oxidative DNA damage in circulating lymphocytes of tetralogy of fallot patients. *Mutat Res*. 2010; 688(1-2): 62-5.
- [4] Oldham KM, Phullis E. Bowen. Oxidative stress in critical care: Is antioxidant supplementation beneficial? *J Am Diet Assoc*. 1998; 98(9): 1001-8.
- [5] Ercan S, Cakmak A, Kosecik A, Erel O. The oxidative state of children with cyanotic and acyanotic congenital heart disease. *Anadolu Kardiyol Derg*. 2009; 9(6): 486-90.
- [6] Dusinska M, Collins AR. The comet assay in human biomonitoring: gene-environment interactions. *Mutagenesis*. 2008; 23(3): 191-205.
- [7] Ahuja YR, Saran R. Potential of Single Cell Gel Electrophoresis Assay (Comet Assay) in Heavy Ion Radiation Biology. *Indian J Hum Genet*. 2001; 1(2): 151-6.
- [8] Rokicki W, Strizalkowski A, Klappinska B, Danch A, Sobczak A. Antioxidant status in newborns and infants suffering from congenital heart defects. *WiaLek*. 2003; 56(7-8): 337-40.

PARTICULARS OF CONTRIBUTORS:

1. Junior Resident, Department of Anatomy, Jawaharlal Institute of Postgraduate Medical Education and Research, Puducherry, India.
2. Associate Professor, Department of Anatomy, Jawaharlal Institute of Postgraduate Medical Education and Research, Puducherry, India.
3. Professor and Head, Department of Pediatrics, Jawaharlal Institute of Postgraduate Medical Education and Research, Puducherry, India.
4. Professor and Head, Department of Anatomy, Jawaharlal Institute of Postgraduate Medical Education and Research, Puducherry, India.
5. Senior Professor, Department of Anatomy, Jawaharlal Institute of Postgraduate Medical Education and Research, Puducherry, India.

NAME, ADDRESS, E-MAIL ID OF THE CORRESPONDING AUTHOR:

Dr. Vidya G.,
Junior Resident, Department of Anatomy, Jawaharlal Institute of Postgraduate Medical Education and Research, Puducherry, India.
Phone: 9940868631, E-mail: vidhurd03@gmail.com

Date of Submission: Dec 03, 2013

Date of Peer Review: Jan 20, 2014

Date of Acceptance: Feb 10, 2014

Date of Publishing: Apr 15, 2014

FINANCIAL OR OTHER COMPETING INTERESTS: None.