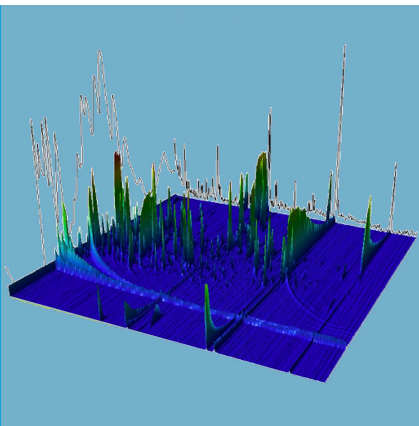


HOST-PATHOGEN INTERACTIONS

Honing in on enteric fever

The use of metabolomics could lead to improved diagnostics for enteric fever.

LYLE R MCKINNON AND QUARRAISHA ABDOL KARIM



Related research article Näsström E, Nga TVT, Dongol S, Karkey A, Phat VV, Tuyen HT, Johansson A, Arjyal A, Thwaites G, Dolecek C, Basnyat B, Baker S, Antti H. 2014. *Salmonella* Typhi and *Salmonella* Paratyphi A elaborate distinct systemic metabolite signatures during enteric fever. *eLife* 3:e03100. doi: [10.7554/eLife.03100](https://doi.org/10.7554/eLife.03100)

Image The mass spectrum of a plasma sample taken from a patient with enteric fever

people without the disease). The current gold standard diagnostic tool for enteric fever is blood culture, but this has a low specificity and it is also challenging to perform consistently in regions with limited resources. As a consequence, misdiagnosis and mistreatment of enteric fever is common, which leads to poor clinical outcomes and the potential spread of antibiotic resistance. The development of nucleic acid and antigen-detection tests to diagnose enteric fever has faced similar challenges, with lower than expected sensitivity and specificity. One explanation for this could be that the levels of *Salmonella* in the blood tend to be very low at all stages of the disease (Darton *et al.*, 2014).

Enteric fever, also known as typhoid, is a disease that affects about 22 million people and causes about 200,000 deaths every year, according to conservative estimates (Buckle *et al.*, 2012). Enteric fever is spread by bacteria belonging to the *Salmonella* genus, with two sub-species—*Salmonella* Typhi and *Salmonella* Paratyphi A—being responsible for most cases of the disease. And although the number of cases of enteric fever has fallen significantly over recent decades, there is a clear need for a diagnostic test for *Salmonella* that is rapid, affordable and accurate. Moreover, it is important to be able to distinguish between enteric fever caused by *Salmonella* Typhi and enteric fever caused by *Salmonella* Paratyphi A in order to ensure that the correct drugs are prescribed and to combat the development of antibiotic resistance.

Now, in *eLife*, Elin Näsström and co-workers at Umeå University, Oxford University (including clinical research units in Ho Chi Minh City and Kathmandu), and the London School of Hygiene and Tropical Medicine apply a promising new approach to this challenge (Näsström *et al.*, 2014). Instead of trying to detect *Salmonella* in the blood during infection, they used a technique called metabolomics. The basic idea of this approach is that infection leads to metabolic changes, such that a person with enteric fever (or any infection) could have a profile of metabolites in their blood that is different to the metabolite profile of a healthy person. The challenge, therefore, is to identify a ‘metabolic fingerprint’ that can be used to detect enteric fever with high levels of sensitivity and specificity.

The ideal diagnostic test offers high levels of sensitivity (that is, it is able to detect a high proportion of the people tested who have a particular disease), and also high levels of specificity (that is, it returns a ‘No’ for a high proportion of

The application of metabolomics is relatively new in infectious diseases research compared to the application of genomics and proteomics. Despite this, screening the metabolome in blood plasma has identified useful prognostic profiles of several diseases, including sepsis (Langley *et al.*, 2013). One of the major benefits of this

technique is that it utilizes a pattern of biomarkers (that is, the various metabolites), as opposed to relying on just one host biomarker, as has been the focus of previous approaches.

Näsström et al. collected blood samples from 75 participants from South East Asia: 25 had enteric fever caused by *S. Typhi*, 25 had enteric fever caused by *S. Paratyphi A*, and 25 did not have enteric fever. Using a combination of gas chromatography and mass spectrometry, Näsström et al. identified 695 distinct peaks that were associated with different metabolites: from these they selected six peaks that had significantly different heights in the three groups of patients. This meant that they were able to tell if the patient had *S. Typhi*, *S. Paratyphi A*, or neither. That this mass spectrometric analysis was able to distinguish two *Salmonella* groups that share many similarities is remarkable. Moreover, in addition to its diagnostic potential, this new approach might also provide insights into the antigenic and physiological differences between the two strains.

There are, however, several issues that need to be addressed before this work will reach the clinic. The sample size in the study was relatively small (although it was randomly collected from a clinical trial repository). Näsström et al. also acknowledge that they did not perform any external validation, so it is not clear that the six biomarkers they identified will be relevant in other populations. It will be necessary to address these two points in future trials. Lastly, while negative controls were included, an expanded set of all-cause fever samples (that is, samples in which the enteric fever was caused by other organisms) will be needed to determine how well this panel of six biomarkers will perform in a real clinical setting.

Nevertheless, these findings represent an important step in the right direction. Näsström et al. acknowledge that mass spectrometers are too complex and expensive for routine use, but other more affordable technologies may be able to detect the six-metabolite fingerprint that they

have identified. It might also be possible to use a similar approach to diagnose other bacterial infections.

Finally, given that antibiotic resistance is now a major public health challenge, and that we might be entering a 'post-antibiotic era' (Woolhouse and Farrar, 2014), these findings could represent a substantial technological advance and an important first step to addressing the problem of diagnosing and properly treating enteric fever and other blood-borne infections.

Lyle R McKinnon is in the Centre for the AIDS Programme of Research in South Africa (CAPRISA), Durban, South Africa
sijuisijali@gmail.com

Quarraisha Abdool Karim is in the Centre for the AIDS Programme of Research in South Africa (CAPRISA), Durban, South Africa
abdoolq2@ukzn.ac.za

Competing interests: The authors declare that no competing interests exist.

Published 01 July 2014

References

- Buckle GC**, Walker CLF, Black RE. 2012. Typhoid fever and paratyphoid fever: systematic review to estimate global morbidity and mortality for 2010. *Journal of Global Health* 2:010401. doi: [10.7189/jogh.01.010401](https://doi.org/10.7189/jogh.01.010401).
- Darton TC**, Blohmke CJ, Pollard AJ. 2014. Typhoid epidemiology, diagnostics and the human challenge model. *Current Opinion in Gastroenterology* 30:7–17. doi: [10.1097/MOG.000000000000021](https://doi.org/10.1097/MOG.000000000000021).
- Langley RJ**, Tsalik EL, van Velkinburgh JC, Glickman SW, Rice BJ, Wang C, Chen B, Carin L, Suarez A, Mohny RP, et al. 2013. An integrated clinico-metabolomic model improves prediction of death in sepsis. *Science Translational Medicine* 5:195ra95. doi: [10.1126/scitranslmed.3005893](https://doi.org/10.1126/scitranslmed.3005893).
- Näsström E**, NGA TVT, Dongol S, Karkey A, Phat VV, Tuyen HT, Johansson A, Arjyal A, Thwaites G, Dolecek C, et al. 2014. *Salmonella Typhi* and *Salmonella Paratyphi A* elaborate distinct systemic metabolite signatures during enteric fever. *eLife* 3:e03100. doi: [10.7554/eLife.03100](https://doi.org/10.7554/eLife.03100).
- Woolhouse M**, Farrar J. 2014. An intergovernmental panel on antimicrobial resistance. *Nature* 509:555–557. doi: [10.1038/509555a](https://doi.org/10.1038/509555a).