



CrossMark
click for updates

Research

Cite this article: Hughes AR, Mann DA, Kimbro DL. 2014 Predatory fish sounds can alter crab foraging behaviour and influence bivalve abundance. *Proc. R. Soc. B* **281**: 20140715.
<http://dx.doi.org/10.1098/rspb.2014.0715>

Received: 25 March 2014

Accepted: 20 May 2014

Subject Areas:

ecology, behaviour

Keywords:

bioacoustics, invertebrate, non-consumptive effect, predation, trophic cascade

Author for correspondence:

A. Randall Hughes

e-mail: rhughes@neu.edu

Electronic supplementary material is available at <http://dx.doi.org/10.1098/rspb.2014.0715> or via <http://rspb.royalsocietypublishing.org>.

Predatory fish sounds can alter crab foraging behaviour and influence bivalve abundance

A. Randall Hughes¹, David A. Mann² and David L. Kimbro¹

¹Marine Science Center, Northeastern University, 430 Nahant Rd., Nahant, MA 01908, USA

²Loggerhead Instruments, 6576 Palmer Park Circle, Sarasota, FL 34238, USA

The risk of predation can have large effects on ecological communities via changes in prey behaviour, morphology and reproduction. Although prey can use a variety of sensory signals to detect predation risk, relatively little is known regarding the effects of predator acoustic cues on prey foraging behaviour. Here we show that an ecologically important marine crab species can detect sound across a range of frequencies, probably in response to particle acceleration. Further, crabs suppress their resource consumption in the presence of experimental acoustic stimuli from multiple predatory fish species, and the sign and strength of this response is similar to that elicited by water-borne chemical cues. When acoustic and chemical cues were combined, consumption differed from expectations based on independent cue effects, suggesting redundancies among cue types. These results highlight that predator acoustic cues may influence prey behaviour across a range of vertebrate and invertebrate taxa, with the potential for cascading effects on resource abundance.

1. Introduction

The risk of predation, even from relatively rare predators, can have large effects on ecological communities via changes in prey behaviour, morphology and reproduction that cascade to impact the abundance and biomass of basal resources [1–4]. These non-consumptive indirect effects can be large [5,6] and equivalent in magnitude to consumptive effects [2]. By matriculating through the food web, non-consumptive predator effects can even influence ecosystem functioning [3,4].

In order for non-consumptive effects to occur, prey must be able to detect their predators and assess predation risk [7]. In addition to visual or mechanical cues resulting from direct contact with predators, prey can utilize chemical/olfactory and acoustic stimuli from predators and damaged conspecifics to evaluate the risk of predation [8,9]. In marine environments, much of the research on predator recognition and avoidance has focused on water-borne chemical cues, demonstrating their importance across a wide range of taxa [6,10,11]. Because water also provides an excellent medium for the transmission of sound, acoustic signals could be a reliable cue of nearby predators, potentially increasing the strength of non-consumptive effects [7].

Despite significant research in marine bioacoustics (particularly on marine mammals and fishes), few studies have considered the potential for predator vocalizations to elicit non-consumptive effects on prey and their resources (but see [12]). Sound production is widespread in marine fishes, and serves a variety of social communication purposes, including mate attraction, territory defence, and distress and alarm calls [13,14]. Unlike in marine mammals such as dolphins, fish vocalizations have not been explicitly linked to their foraging behaviour, yet they do indicate fish presence and thus could provide reliable cues of predation risk for prey. However, their utility as cues relies also on the ability of their prey to detect these sounds.

We examined the potential for fish vocalizations to create non-consumptive effects in their crab prey, and whether these effects cascade to the crabs' bivalve

resources. Relatively little is known about marine invertebrates' response to sound [15,16], but many invertebrate species have organs known as statocysts that can detect particle motion and thus may serve as a sound receptor [17,18]. We first quantified crab hearing capability using the auditory evoked potential (AEP) method [15,19]. We then conducted two experiments to examine (1) whether crabs alter their foraging rates in response to acoustic cues from predators and non-predators, and (2) whether there are interactive effects of predator acoustic and water-borne chemical cues. We utilized a well-studied oyster reef food web consisting of vocalizing fish predators (hardhead catfish, *Ariopsis felis*; black drum, *Pogonias cromis*; oyster toadfish, *Opsanus tau*), mud crab (*Panopeus* spp.) prey, and bivalve (hard clam, *Mercenaria mercenaria*) resources. Previous research in this system has demonstrated strong non-consumptive predator effects resulting from the physical presence of fish and invertebrate predators [20,21], as well as from predator water-borne chemical cues [8,22].

2. Material and methods

(a) Crab hearing measurements

We quantified crab hearing capability using the AEP method, a minimally invasive method of measuring the neural response resulting from auditory stimulation [15,19,23–26]. The AEP method provides a rapid means of testing hearing capability without training of the test organisms. We tested four male and four female crabs (*Panopeus* spp.) of 30–50 mm carapace width collected from natural intertidal oyster reefs in the northern Gulf of Mexico within 48 h of the hearing experiments. This sample size is standard for AEP studies [15,19,23–26]. Testing for each crab took approximately 20 min, and all crabs survived the tests. We also tested one dead crab as a control.

During the AEP experiments, an individual crab was restrained on a wooden sling and suspended 10 cm underwater in a cylindrical steel tank (122 cm high, 20.3 cm diameter, 0.95 cm thick walls) containing seawater at 23°C, with the underwater speaker positioned at the bottom of the tank. Prior to submerging the crab, a stainless steel recording electrode (Rochester Electro-Medical, Tampa, FL) was inserted under the carapace near the basal joint of the antennule and statocyst [27]. A reference electrode was placed under the carapace in the body cavity. A ground electrode was placed in the water near the body of the crab. All exposed surfaces of the electrodes that were not in direct contact with the crab were coated with enamel for insulation.

Sound stimuli were presented and AEP waveforms were collected using a Tucker-Davis Technologies physiology apparatus with SIGGEN and BioSIG software. Sounds were computer generated using TDT software and hardware (RP2.1 Real-Time Processor) at a 24 kHz sample rate, and passed through a power amplifier (Halfer P1000) connected to the underwater speaker (University Sound UW-30). Tone bursts were 50 ms in total duration and were gated with a Hanning window (similar to the conditions of past AEP studies [24–26]). Sounds were presented 17.5 times s^{-1} with alternating phase on each presentation. Responses to each tone burst at each sound pressure level (SPL) were collected using the BioSIG software package using a DB4 biological amplifier with gain set to 10 000 \times , and a 3000 Hz low-pass filter. Near threshold, 1000 responses were averaged for each stimulus frequency and level combination. In order to speed up testing, the program was advanced to the next test condition if an AEP was obvious before 1000 averages were reached. The SPLs of each presented frequency were confirmed using a calibrated underwater hydrophone (HTI 96 min; sensitivity: -164.4 dB re 1 V μPa^{-1}). Sound pressure gradients were calculated by measuring the sound pressure at

locations 5 cm in each direction (x , y and z) from where the crab was centred with the same hydrophone using the BioSIG software, which creates a time-locked recording. The set-up for calibration was exactly the same, except the crab was not present. The sound pressure gradients were then converted to particle velocities for each frequency and location in the test tank as a function of $\sqrt{(x^2 + y^2 + z^2)}$.

The SPL at each frequency was initially set to a level that produced a response and then decreased in 6 dB steps until a stereotypical AEP was no longer seen. The frequencies tested were 75, 100, 200, 400, 800 and 1600 Hz. Initial levels were: 75 Hz/160 dB; 100 Hz/158 dB; 200 Hz/146 dB; 400 Hz/151 dB; 800 Hz/144 dB; 1600 Hz/139 dB. The sound was then repeated at the next lower level to ensure that threshold had been reached. Threshold was defined as the lowest level at which a response could be detected in the Fourier transform of the AEP that was 6 dB above background noise at twice the stimulus frequency.

(b) Predator acoustic cue experiment

We examined the effects of predator acoustic cues on crab foraging behaviour by quantifying consumption of crab resources (juvenile clam, *Mercenaria mercenaria*) in an outdoor mesocosm experiment at the Florida State University Coastal and Marine Laboratory (FSUCML) in August 2012. We utilized publicly available recorded vocalizations of three fish predators that are known to consume mud crabs on oyster reefs in our study area: the black drum (*Pogonias cromis*; audio file courtesy of James Locascio and David Mann, University of South Florida College of Marine Science; electronic supplementary material, audio file S1), the hardhead catfish (*Ariopsis felis*; from dosits.org, copyright University of Rhode Island Office of Marine Programs, 2002–2007; electronic supplementary material, audio file S2) and the oyster toadfish (*Opsanus tau*; from dosits.org, copyright University of Rhode Island Office of Marine Programs, 2002–2007; electronic supplementary material, audio file S3). Toadfish are among the best-studied vocal fish; they produce a range of sounds related to mate attraction, nest defence and agonism [13,28,29]. Catfish vocalizations have been documented in relation to schooling behaviour, reproduction and distress, and they may also function as a form of echolocation [30,31]. The 'drum' call of the black drum has been linked to territoriality and spawning; these fish also produce a staccato disturbance call [32]. None of the fish are known to vocalize specifically when foraging, yet we hypothesized that these sounds may still provide a reliable cue to crabs of predation risk.

Each experimental mesocosm ($n = 20$) consisted of a 78.5 l round plastic tub (diameter = 42 cm; area = 0.55 m²) with two drains: a 2.5 cm hole drilled 8.0 cm from the top of the tub prevented overflow of seawater, and a barbed reducer (1/4 inch), 8.0 cm from the bottom, allowed a gradual outflow of water as in [22]. Mesocosms were filled with 18.6 l (an approximate depth of 6 cm) of sieved sand and approximately 3 l of dead oyster shell to provide structure and habitat for the crabs. All mesocosms received flow-through, sand-filtered seawater from the Gulf of Mexico via the seawater system at FSUCML to simulate high tide during the trials. Each mesocosm was fitted with a plastic mesh cover (1/4 inch openings) lined with window screen to reduce light and prevent visual stimuli from outside the mesocosm from influencing crab behaviour.

We ran three independent trials of the mesocosm experiment, using different crabs in each trial. Within a trial, we conducted three separate treatment exposures within a 5-day period. Adult mud crabs (*Panopeus* spp.) between 20 and 40 mm carapace width were hand collected from natural reefs in Apalachee Bay, Florida, within 3 days of the start of each trial, held in tanks with flow-through seawater, and fed juvenile clams ad libitum. On the first exposure day of the trial, five crabs were added to each mesocosm and allowed to acclimate to their surroundings for at

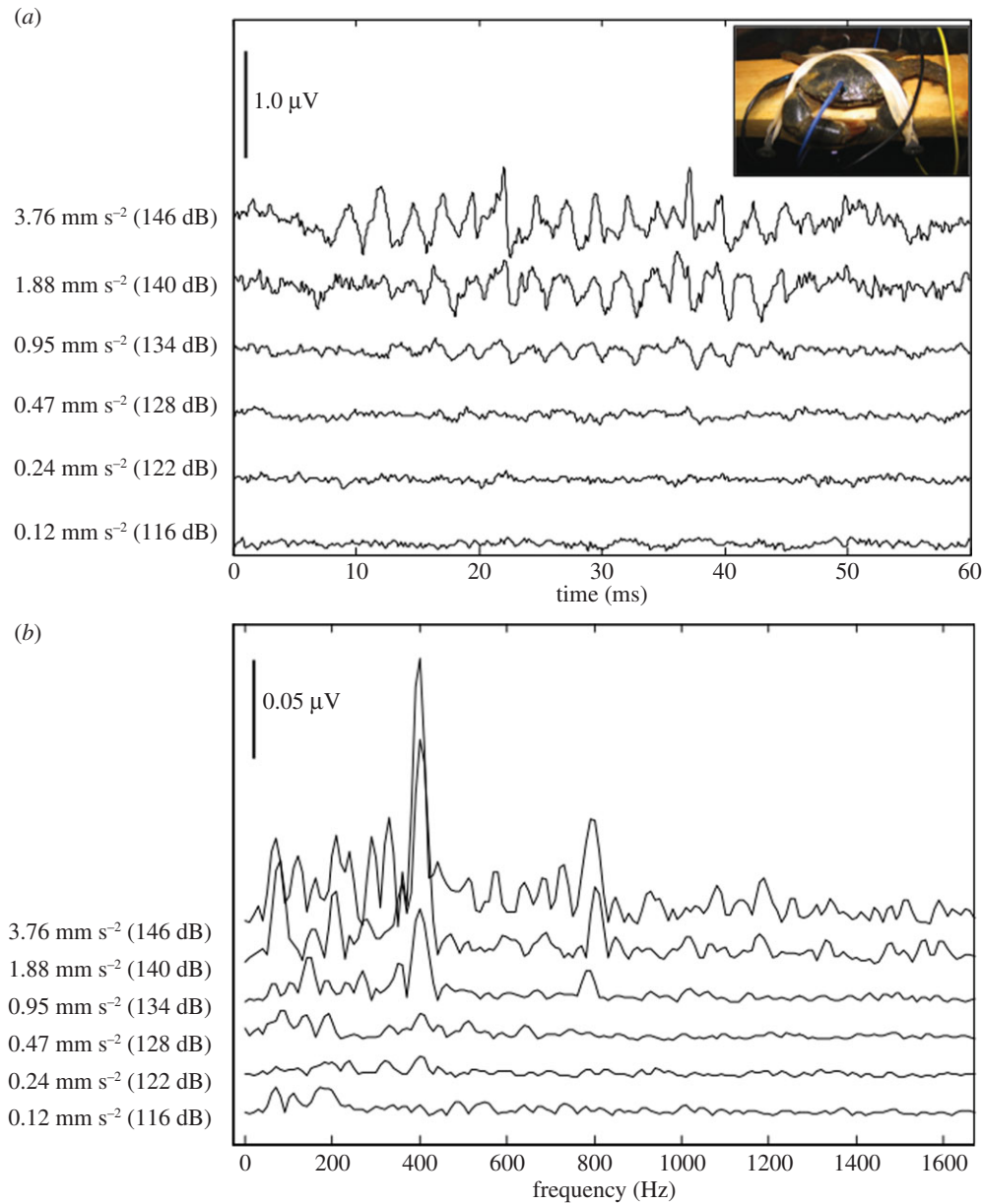


Figure 1. Evoked potentials for an individual crab in response to 200 Hz sound presentation of tonal bursts at several sound levels. Sound levels are shown in terms of both particle acceleration and acoustic pressure. (a) Evoked potentials as a function of time from stimulus presentation. Vertical scale bar represents $1.0 \mu\text{V}$ amplitude. Inset: experimental crab on wooden sling prior to placement in the tank for the sound presentation. (b) Evoked potentials as a function of frequency (FFT of traces in (a)). Vertical scale bar represents $0.05 \mu\text{V}$ amplitude. (Online version in colour.)

least 30 min. This density is within the range found on natural reefs in the region [22]. Live juvenile clams less than 10 mm in shell diameter were affixed with super glue to the inner surface of dead oyster shells (five clams per shell) the morning of each run to serve as the resource for the crabs. These shells were then marked along the shell margin with a 1–2 cm stripe of brightly coloured enamel to facilitate identification and retrieval at the end of the experiment. Five of these shells ($n = 25$ clams per mesocosm) were placed in each mesocosm, intermixed with the other dead oyster shell.

Mesocosms were randomly assigned to one of the acoustic cue treatments for each trial ($n = 4$ per treatment per trial): black drum (predator), hardhead catfish (predator), toadfish (predator), snapping shrimp (non-predator control; *Alpheus heterochaelis*; courtesy of Paul Perkins, NUWC Engineering, Test and Evaluation Department; from dosits.org, copyright University of Rhode Island Office of Marine Programs, 2002–2007; electronic supplementary material, audio file S4) and silent recording (control; electronic supplementary material, audio file S5). Acoustic treatments were maintained for each treatment exposure in a

given trial (i.e. the same crabs experienced the same acoustic cue in each of the 3 exposure days per trial). Playback treatments consisted of a single 5 min playback of a looped-mode recording created by a brief (5–10 s) clip of the appropriate sound with 3–4 s of silence between sounds. Cues were broadcast from a portable MP3 player that was connected to a 120 V amplifier (OSC GX3) and then to a 30 W underwater speaker (Electro-Voice UW-30). The speaker was placed along one side of the mesocosm, facing the interior of the tank. We tested each of our predator cues in a replicate mesocosm set up at USF, because calibration equipment was not available at the time of the experiment. The hydrophone was placed 20 cm away from the underwater speaker, mimicking the crabs' position during the mesocosm experiments (maximum distance was 35 cm). SPLs (RMS between 100 and 1000 Hz) were toadfish = 144 dB re $1 \mu\text{Pa}$; drum = 138 dB re $1 \mu\text{Pa}$; catfish = 137 dB re $1 \mu\text{Pa}$; snapping shrimp = 133 dB re $1 \mu\text{Pa}$; silent = 112 dB re $1 \mu\text{Pa}$). Cues were played sequentially across mesocosms; clams were added immediately prior to the acoustic cue playback in each mesocosm to prevent crab foraging prior to applying the treatment.

Within 4.0 h of the cue treatments, we retrieved the marked oyster shells and counted the number of live clams remaining to quantify clam consumption. Direct observations of crab behaviour were not possible because of low water clarity.

(c) Predator acoustic cue versus water-borne cue experiment

To test the strength of predator acoustic effects relative to a different predator cue on crab foraging behaviour, we conducted a factorial manipulation of catfish acoustic cues (present, absent) and catfish water-borne cues (present, absent) in the mesocosms described above. Treatments were randomly assigned to mesocosms ($n = 5$ per treatment per trial). We utilized a coupled, flow-through predator cue system similar to previous experimental manipulations testing non-consumptive predator effects (see e.g. [6,22,33,34]). We ran two independent trials using different crabs, with a single treatment exposure in each. Adult mud crabs (*Panopeus* spp.) between 20 and 40 mm carapace width were hand collected from natural reefs in Apalachee Bay within 3 days of the start of each trial, held in tanks with flow-through seawater and fed juvenile clams ad libitum. Five crabs were added to each mesocosm at least 30 min prior to the start of each trial, and all mesocosms received flow-through, sand-filtered seawater from the Gulf of Mexico via the seawater system at FSUCML. Five marked oyster shells with live juvenile clams affixed with super glue (five clams per shell) were added to each mesocosm just prior to the cue treatments to prevent crabs from consuming resources before the application of each treatment. After the marked oyster shells were added, the inflow tubing for mesocosms assigned to the water-borne cue treatment was switched from the regular FSUCML seawater system line to a line with seawater that first circulated through a single 100-gallon flow-through tank (area = 1.04 m²) that housed two predators (hardhead catfish, *Ariopsis felis*) for the duration of the trial (see [22] for additional details on mesocosm set-up; catfish were housed in strict accordance with the recommendations in the Guide for the Care and Use of Laboratory Animals of the National Institutes of Health and the protocol was approved by the Animal Care and Use Committee at the Florida State University, Permit no. 1106). Mesocosms not receiving water-borne predator cues continued to receive seawater directly from the FSUCML seawater system at an equivalent flow rate for the duration of the trial. Immediately after the water-borne cue treatment was established, the acoustic cue treatment was applied. Each mesocosm received a single 5 min playback loop of the predator (hardhead catfish) recording or a silent recording. After 2 h, we ended the water-borne cue treatments, collected the marked oyster shells and quantified the number of clams consumed in each mesocosm as above.

(d) Statistical analysis

We used a generalized linear mixed-effects model selection approach using R software (v. 2.15.0, lme4, lattice, multcomp and glmmADMB packages) to examine the proportion of clams consumed across treatments. In all analyses, experimental trial and mesocosm were included as random effects. For the first experiment, predator cue was treated as a fixed factor, and exposure day was nested within mesocosm. We also ran a separate analysis using only the data from the first exposure day of each trial. For the second experiment, catfish acoustic cues (present/absent) and water-borne chemical cues (present/absent) were designated as fixed factors. One mesocosm was excluded from each trial in the second experiment because of failure in the delivery of water from the predator tank.

For each analysis, we fitted the data to a series of nested models using a binomial error distribution to determine which best explained the observed results (electronic supplementary

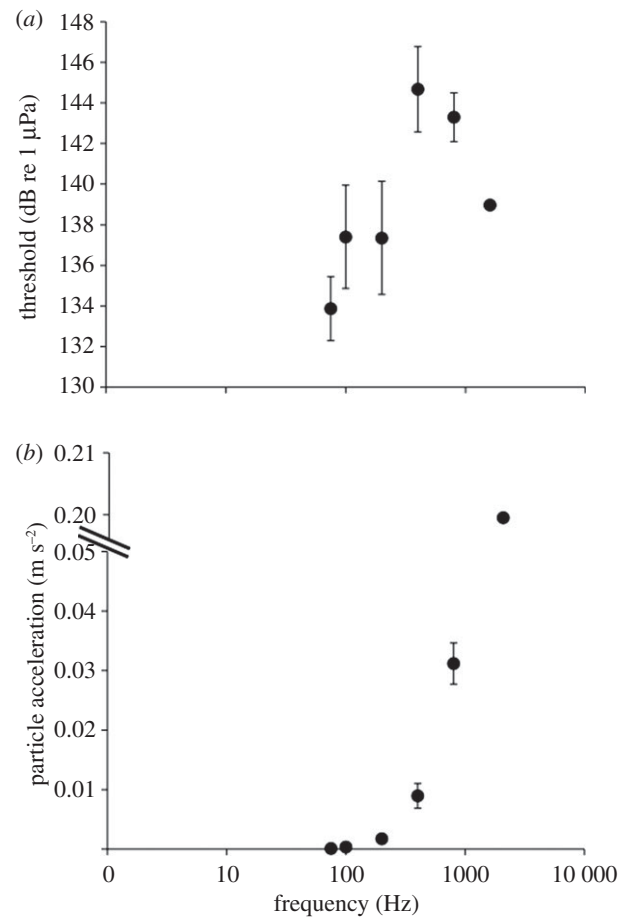


Figure 2. Evoked potential audiograms in terms of (a) acoustic pressure and (b) acoustic particle acceleration, showing the lowest sound level that produced a detectable evoked potential. Eight crabs were tested at all frequencies. Lower values for thresholds and particle accelerations indicate greater sensitivity. Error bars represent ± 1 s.e.

material, appendix S6). These models included a null model with an intercept of 1 and only the random effects, and models that included random effects with single, additive and interactive effects between fixed factors. We then performed model selection using Akaike's information criterion corrected for small sample sizes (AICc [35]). The identification of the best candidate model was based on Akaike weight (w_i), which was calculated as the model likelihood normalized by the sum of all model likelihoods. Weights close to 1 indicate greater support for the model in the data [36]. Models were considered to have substantial support if their Δ AICc score was less than 2.0. We then conducted mean comparisons using a Tukey test in the multcomp package. In the second experiment, we also used a multiplicative risk model on the proportion of clams surviving to calculate expected consumption in the combined cue treatment [37]. We then compared expected and observed values using Student's t -test.

3. Results

AEPs (indicating neural responses) were obtained for all live crabs tested, and showed a frequency doubling effect, where the AEP signal was twice the frequency of the stimulus frequency (figure 1). The acoustic pressure thresholds were all very high (>133 dB re 1 µPa; figure 2a), and no clear pattern of sensitivity was apparent. When the data were plotted as a function of acoustic particle acceleration, best sensitivity was at 75 Hz with decreasing sensitivity up to 1600 Hz (figure 2b).

Table 1. Results of model selection analyses for the mesocosm experiments. *Italic* indicates best model; parentheses denote random effects and solid denotes nested effects. ΔAICc is the difference between the AICc of a particular model compared with the lowest AICc observed. Models with ΔAICc scores of less than 2.0 have significant explanatory power. The Akaike weight is calculated as the model likelihood normalized by the sum of all model likelihoods; values close to 1.0 indicate greater confidence in the selection of a model.

model	df	ΔAICc	weight
predator acoustic cue experiment			
all data			
proportion clams consumed $\sim 1 + (\text{trial}) + (\text{tank/exposure day})$	4	62.8	<0.001
<i>proportion clams consumed $\sim \text{acoustic treatment} + (\text{trial}) + (\text{tank/exposure day})$</i>	8	0	1.0
first exposure day per trial only			
proportion clams consumed $\sim 1 + (\text{trial}) + (\text{tank})$	3	46.7	<0.001
<i>proportion clams consumed $\sim \text{acoustic treatment} + (\text{trial}) + (\text{tank})$</i>	7	0	1.0
predator acoustic cue versus chemical cue experiment			
proportion clams consumed $\sim 1 + (\text{trial}) + (\text{tank})$	3	1.9	0.153
<i>proportion clams consumed $\sim \text{acoustic cue} + (\text{trial}) + (\text{tank})$</i>	4	0	0.403
proportion clams consumed $\sim \text{chemical cue} + (\text{trial}) + (\text{tank})$	4	3.3	0.076
proportion clams consumed $\sim \text{acoustic cue} + \text{chemical cue} + (\text{trial}) + (\text{tank})$	5	1.5	0.190
proportion clams consumed $\sim \text{acoustic cue} \times \text{chemical cue} + (\text{trial}) + (\text{tank})$	6	1.6	0.178

In our first mesocosm experiment, acoustic cue treatment explained a large percentage of the variation in crab foraging behaviour ($w_i = 1.0$, table 1). Acoustic cues differentially affected consumption of bivalve prey (figure 3a): foraging rates were lowest when crabs were exposed to the black drum (predator) cue, intermediate in response to the catfish (predator) cue, and equivalently high in the toadfish (predator) and snapping shrimp (non-predator control) treatments. The results were consistent when we restricted our analysis to the first day of exposure in each trial (table 1).

In our second experiment, catfish acoustic cues best explained crab foraging behaviour (figure 3b; $w_i = 0.40$, table 1), along with additive ($\Delta\text{AICc} = 1.5$, $w_i = 0.19$, table 1) and interactive ($\Delta\text{AICc} = 1.6$, $w_i = 0.18$, table 1) effects of catfish chemical cues. Consumption of clams was lower in the presence of predator cues (acoustic only, chemical only or combined acoustic and chemical) than in the absence of cues, yet only the acoustic cue treatment was significantly different than the control treatment in *post hoc* tests. In addition, the combined effects of these two different cue types differed from expectations based on the single cue treatments: the observed consumption rate in the multiple cue treatment was greater than the expected consumption rate based on the multiplicative risk model (figure 3b; *t*-test, $p = 0.01$), even if one combined cue replicate was excluded because of unusually high consumption (*t*-test, $p = 0.05$).

4. Discussion

Crab neural responses indicated that they could detect a range of frequencies that coincide with the low-frequency vocalizations of many sonic marine fishes [14]. In addition, crabs reduced their foraging activity in the presence of experimental acoustic stimuli from two predatory fish species. The doubling effect that we observed in the auditory AEPs has been seen previously in squid and fish [15,19], and is indicative of a statocyst system with directionally sensitive sensory cells. Crabs' lack of

sensitivity to sound pressure is consistent with the fact that they do not contain air bubbles and suggests that they are most likely to detect fish sounds when the fish is nearby.

Variable crab responses to individual predator species may reflect differences in risk that each of these predators poses to crabs. Although we do not have information on the relative risk posed by each predator, stomach contents indicate that all predator species tested in our experiment consume mud crabs (toad fish [20]; black drum [38]; catfish [39]). The reliability of the vocalizations as a cue of predation risk may also vary by predator species due to the nature of the call itself. For instance, the well-studied toadfish 'boat-whistle' call used in our playback experiment is generated by males to attract females to their nest site [13]. Because the male toadfish then guards the eggs and embryos at the nest site until they are free-swimming, this call is probably not associated with high predation risk for mud crabs. In addition, toadfish are resident on reefs, whereas catfish and black drum move on and off the reef with the tides (D. Kimbro 2010, unpublished data). Thus, catfish and black drum vocalizations may be a strong indicator of a sudden increase in predation risk for mud crabs. Furthermore, black drum calls have relatively high source levels (165 dB re 1 μPa [32]), which will increase their detectable range in comparison with fish producing lower sound levels (e.g. toadfish: 123–126 dB re 1 μPa [32]; catfish: 97 dB re 1 μPa [31]).

Although it is difficult to compare acoustic and chemical cue manipulations directly (i.e. are five minutes of acoustic cues equivalent to five minutes of chemical cues?), it is clear that catfish acoustic cues elicit non-consumptive effects of approximately the same magnitude and direction as their water-borne chemical cues. Water-borne chemical cues from predators are highly influenced by hydrodynamic conditions such as velocity and turbulence, particularly in structured habitats such as oyster reefs [8,11,40]. Acoustic cues may be less readily attenuated at these small spatial scales, and thus may provide a more reliable cue of predator presence and proximity (but see [41]). Further, our acoustic cue

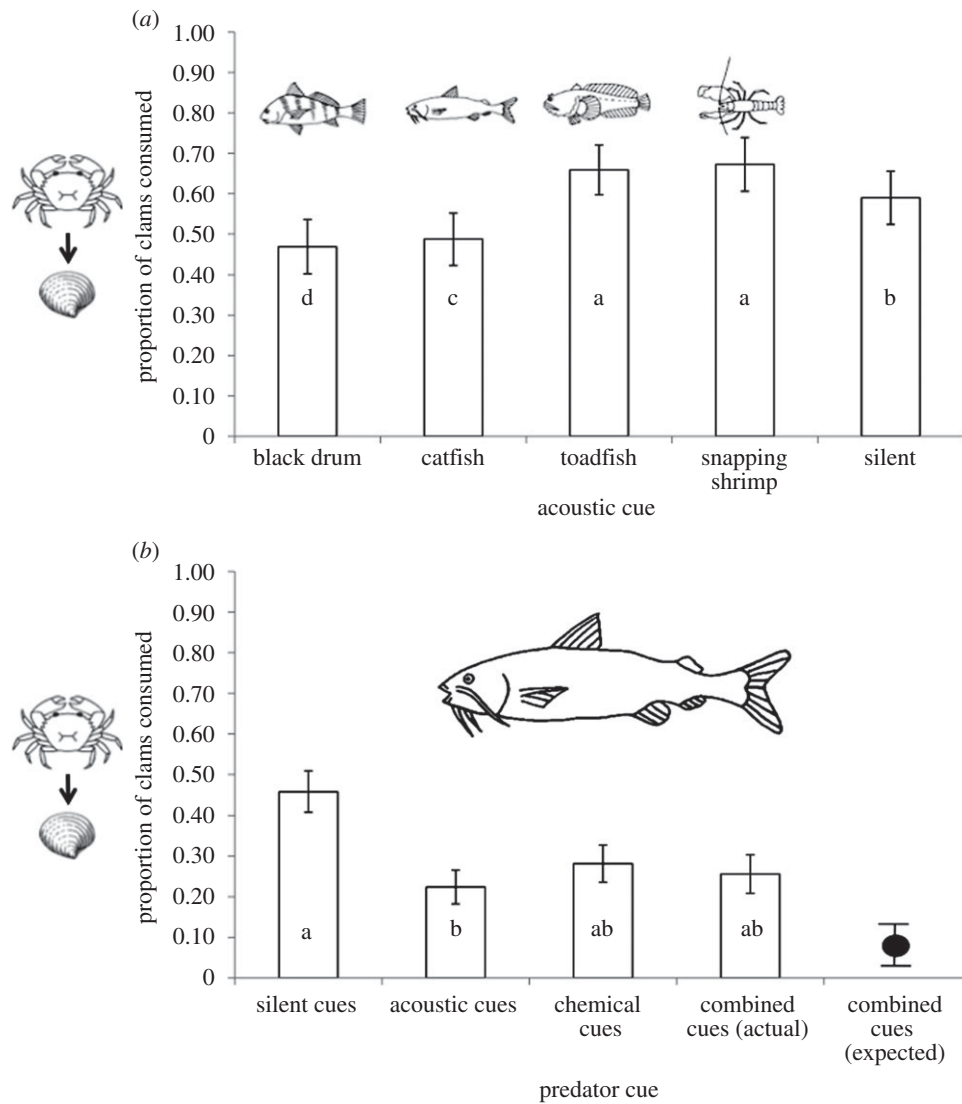


Figure 3. Crab foraging responses to predatory cues. (a) Effects of predator and non-predator acoustic cues. Crab foraging activity (proportion of clams consumed) varied in response to both predator and non-predator cues compared with the silent cue control. (b) Effects of predator acoustic cues and predator chemical cues. Crab foraging activity decreased in response to short-term catfish acoustic cues, persistent water-borne catfish cues and their combination. Consumption rates in the combined cue treatment were greater than the expectation calculated with the multiplicative risk model (black circle). Letters indicate significant differences based on Tukey *post hoc* tests. Error bars represent ± 1 s.e. Line drawings by T. Rogers.

treatment consisted of a single 5 min playback whereas the chemical cues were continuous for the duration of the experiment, demonstrating that even short-duration acoustic cues can have lingering ecological effects. The difference between observed and expected consumption with combined acoustic and chemical cues suggests that there may also be redundancies among cue types.

Acoustically distinctive habitat cues (marine 'soundscapes') are increasingly recognized as an important sensory cue for fish, as well as for invertebrate larvae [42–44]. Biological sources that characterize distinct habitats, particularly at dawn and dusk (when many marine organisms forage), include soniferous animals such as snapping shrimp, fish and sea urchins [45]. However, anthropogenic noise (e.g. boats) can dominate soundscapes at other times of day, with subsequent effects on animal behaviour and physiology [46]. Although few studies have examined the effects of anthropogenic noise on invertebrates [46], recent work demonstrated that another crab species (*Carcinus maenas*) exhibits disrupted feeding, decreased ability to find refuge habitat and increased oxygen consumption when exposed to playbacks of ship noise

[47,48]. In addition to illustrating the potential for predator acoustic cues to be masked or disrupted by human activities, this work reinforces the importance of acoustic cues of a variety of sources for marine invertebrate foraging behaviour and physiology.

Many marine invertebrates have statocysts that sense movement and vibrations [17,18], and acoustic cues have been documented as a form of conspecific communication in several crustacean species, such as fiddler crabs and lobsters [16]. Conspecific acoustic cues are similarly important in terrestrial insects such as crickets for mating and social interactions [49]. Given the ability of invertebrates to detect and respond to sound, and the prevalence of soniferous predators on land and in the sea, we expect that non-consumptive effects of predator acoustic cues on invertebrates may be more common than currently appreciated.

Acknowledgements. We thank R. Diaz de Villegas for his curiosity, and T. Rogers and H. Tahboub for field and laboratory assistance. C. Peterson provided the catfish used in our experiment. T. Rogers created the line drawings of the experimental organisms in figure 3. T. Gouhier,

J. Grabowski, C. Stallings and two anonymous reviewers provided helpful comments on the manuscript.

Data accessibility. Data are available at Dryad doi:10.5061/dryad.v7g26.

Funding statement. This research was supported by National Science Foundation (NSF) grant OCE-0961633 to D.L.K. and A.R.H. This is contribution no. 315 from the Northeastern University Marine Science Center.

References

- Lima SL. 1998 Nonlethal effects in the ecology of predator-prey interactions. *Bioscience* **48**, 25–34. (doi:10.2307/1313225)
- Preisser EL, Bolnick DI, Benard MF. 2005 Scared to death? The effects of intimidation and consumption in predator-prey interactions. *Ecology* **86**, 501–509. (doi:10.1890/04-0719)
- Schmitz OJ. 2008 Effects of predator hunting mode on grassland ecosystem function. *Science* **319**, 952–954. (doi:10.1126/Science.1152355)
- Schmitz OJ, Hawlena D, Trussell GC. 2010 Predator control of ecosystem nutrient dynamics. *Ecol Lett* **13**, 1199–1209. (doi:10.1111/J.1461-0248.2010.01511.X)
- Schmitz OJ, Beckerman AP, O'Brien DL. 1997 Behaviorally mediated trophic cascades: effects of predation risk on food web interactions. *Ecology* **78**, 1388–1399. (doi:10.1890/0012-9658(1997)078[1388:BMTCEO]2.0.CO;2)
- Trussell GC, Ewanchuk PJ, Matassa CM. 2006 Habitat effects on the relative importance of trait- and density-mediated indirect interactions. *Ecol. Lett.* **9**, 1245–1252. (doi:10.1111/J.1461-0248.2006.00981.X)
- Luttbeg B, Trussell GC. 2013 How the informational environment shapes how prey estimate predation risk and the resulting indirect effects of predators. *Am. Nat.* **181**, 182–194. (doi:10.1086/668823)
- Smee DL, Weissburg MJ. 2006 Clamming up: environmental forces diminish the perceptive ability of bivalve prey. *Ecology* **87**, 1587–1598. (doi:10.1890/0012-9658(2006)87[1587:CUFDT]2.0.CO;2)
- Zanette LY, White AF, Allen MC, Clinchy M. 2011 Perceived predation risk reduces the number of offspring songbirds produce per year. *Science* **334**, 1398–1401. (doi:10.1126/science.1210908)
- Kelley JL, Magurran AE. 2003 Learned predator recognition and antipredator responses in fishes. *Fish. Fish.* **4**, 216–226. (doi:10.1046/j.1467-2979.2003.00126.x)
- Weissburg MJ, Zimmer-Faust RK. 1993 Life and death in moving fluids: hydrodynamic effects on chemosensory-mediated predation. *Ecology* **74**, 1428–1443. (doi:10.2307/1940072)
- Remage-Healey L, Nowacek DP, Bass AH. 2006 Dolphin foraging sounds suppress calling and elevate stress hormone levels in a prey species, the Gulf toadfish. *J. Exp. Biol.* **209**, 4444–4451. (doi:10.1242/jeb.02525)
- Maruska KP, Mensinger AF. 2009 Acoustic characteristics and variations in grunt vocalizations in the oyster toadfish *Opsanus tau*. *Environ Biol Fish* **84**, 325–337. (doi:10.1007/s10641-009-9446-y)
- Mann DA, Hawkins AD, Jech JM. 2008 Active and passive acoustics to locate and study fish. In *Fish bioacoustics* (eds JF Webb, RR Fay, AN Popper), pp. 279–310. New York: Springer.
- Mooney TA, Hanlon RT, Christensen-Dalsgaard J, Madsen PT, Ketten DR, Nachtigall PE. 2010 Sound detection by the longfin squid (*Loligo pealeii*) studied with auditory evoked potentials: sensitivity to low-frequency particle motion and not pressure. *J. Exp. Biol.* **213**, 3748–3759. (doi:10.1242/jeb.048348)
- Popper AN, Salmon M, Horch KW. 2001 Acoustic detection and communication by decapod crustaceans. *J. Comp. Physiol. A* **187**, 83–89. (doi:10.1007/s003590100184)
- Budelmann BU. 1992 Hearing in nonarthropod invertebrates. In *The evolutionary biology of hearing* (eds D Webster, R Fay, A Popper), pp. 141–155. New York: Springer.
- Cohen MJ. 1960 The response patterns of single receptors in the crustacean statocyst. *Proc. R. Soc. Lond. B* **152**, 30–49. (doi:10.1098/rspb.1960.0020)
- Egner SA, Mann DA. 2005 Auditory sensitivity of sergeant major damselfish (*Abudefduf saxatilis*) from post-settlement juvenile to adult. *Mar. Ecol.-Prog. Ser.* **285**, 213–222. (doi:10.3354/meps285213)
- Grabowski JH. 2004 Habitat complexity disrupts predator-prey interactions but not the trophic cascade on oyster reefs. *Ecology* **85**, 995–1004. (doi:10.1890/03-0067)
- Grabowski JH, Hughes AR, Kimbro DL. 2008 Habitat complexity influences cascading effects of multiple predators. *Ecology* **89**, 3413–3422. (doi:10.1890/07-1057.1)
- Hughes AR, Rooker K, Murdock M, Kimbro DL. 2012 Predator cue and prey density interactively influence indirect effects on basal resources in intertidal oyster reefs. *PLoS ONE* **7**, e44839. (doi:10.1371/journal.pone.0044839)
- Corwin JT, Bullock TH, Schweitzer J. 1982 The auditory brainstem response in five vertebrate classes. *Electroencephalogr Clin. Neurophysiol* **54**, 629–641. (doi:10.1016/0013-4694(82)90117-1)
- Mann DA, Cott PA, Hanna BW, Popper AN. 2007 Hearing in eight species of northern Canadian freshwater fishes. *J Fish Biol* **70**, 109–120. (doi:10.1111/j.1095-8649.2006.01279.x)
- Mann DA, Higgs DM, Tavolga WN, Souza MJ, Popper AN. 2001 Ultrasound detection by clupeiform fishes. *J. Acoust. Soc. Am.* **109**, 3048–3054. (doi:10.1121/1.1368406)
- Popper AN, Smith M, Cott PA, Hanna BW, MacGillivray A, Austin M, Mann DA. 2005 Effects of exposure to seismic airgun use on hearing of three fish species. *J. Acoust. Soc. Am.* **117**, 3958–3971. (doi:10.1121/1.1904386)
- Sandeman DC, Okajima A. 1972 Statocyst-induced eye movements in the crab *Scylla serrata*. *J. Exp. Biol.* **57**, 187–204.
- Bass AH, McKibben JR. 2003 Neural mechanisms and behaviors for acoustic communication in teleost fish. *Prog. Neurobiol.* **69**, 1–26. (doi:10.1016/S0301-0082(03)00004-2)
- Fine ML. 1978 Seasonal and geographical variation of the mating call of the oyster toadfish *Opsanus tau* L. *Oecologia* **36**, 45–57. (doi:10.1007/BF00344570)
- Schmidtke D, Schulz J, Hartung J, Esser K-H. 2013 Structure and possible functions of constant-frequency calls in *Ariopsis seemanni* (Osteichthyes, Ariidae). *PLoS ONE* **8**, e64864. (doi:10.1371/journal.pone.0064864)
- Tavolga WN. 1977 Mechanisms for directional hearing in the sea catfish (*Arius felis*). *J. Exp. Biol.* **67**, 97–115.
- Locascio JV, Mann DA. 2011 Localization and source level estimates of black drum (*Pogonias cromis*) calls. *J. Acoust. Soc. Am.* **130**, 1868–1879. (doi:10.1121/1.3621514)
- Freeman AS, Byers JE. 2006 Divergent induced responses to an invasive predator in marine mussel populations. *Science (Washington DC)* **313**, 831–833. (doi:10.1126/science.1125485)
- Large SI, Smee DL, Trussell GC. 2011 Environmental conditions influence the frequency of prey responses to predation risk. *Mar. Ecol. Prog. Ser.* **422**, 41–49. (doi:10.3354/meps08930)
- Burnham KP, Anderson DR. 2002 *Model selection and multimodal inference: a practical information-theoretic approach*, 2nd edn, p. 488. New York: Springer.
- Johnson JB, Omland KS. 2004 Model selection in ecology and evolution. *Trends Ecol. Evol.* **19**, 101–108. (doi:10.1016/j.tree.2003.10.013)
- Sih A, Englund G, Wooster D. 1998 Emergent impacts of multiple predators on prey. *Trends Ecol. Evol.* **13**, 350–355. (doi:10.1016/S0169-5347(98)01437-2)
- Robins CR, Ray GC. 1986 *A field guide to Atlantic coast fishes of North America*. Boston, MA: Houghton Mifflin Company.
- Motta PJ, Clifton KB, Hernandez P, Eggold BT, Giordano SD, Wilcox R. 1995 Feeding relationships among nine species of seagrass fishes of Tampa Bay, Florida. *Bull. Mar. Sci.* **56**, 185–200.

40. Weissburg MJ. 2000 The fluid dynamical context of chemosensory behavior. *Biol. Bull.* **198**, 188–202. (doi:10.2307/1542523)
41. Wilson CJ, Wilson PS, Greene CA, Dunton KH. 2013 Seagrass meadows provide an acoustic refuge for estuarine fish. *Mar. Ecol. Progr. Ser.* **472**, 117–127. (doi:10.3354/meps10045)
42. Lillis A, Eggleston DB, Bohnenstiehl DR. 2013 Oyster larvae settle in response to habitat-associated underwater sounds. *PLoS ONE* **8**, e79337. (doi:10.1371/journal.pone.0079337)
43. Montgomery JC, Jeffs A, Simpson SD, Meekan M, Tindle C. 2006 Sound as an orientation cue for the pelagic larvae of reef fishes and decapod crustaceans. *Adv. Mar. Biol.* **51**, 143–196.
44. Stanley JA, Radford CA, Jeffs AG. 2012 Location, location, location: finding a suitable home among the noise. *Proc. R. Soc. B* **279**, 3622–3631. (doi:10.1098/rspb.2012.0697)
45. Radford CA, Stanley JA, Tindle CT, Montgomery JC, Jeffs AG. 2010 Localised coastal habitats have distinct underwater sound signatures. *Mar. Ecol. Progr. Ser.* **401**, 21–29. (doi:10.3354/meps08451)
46. Morley EL, Jones G, Radford AN. 2014 The importance of invertebrates when considering impacts of anthropogenic noise. *Proc. R. Soc. B* **281**, 20132683. (doi:10.1098/rspb.2013.2683)
47. Wale MA, Simpson SD, Radford AN. 2013 Noise negatively affects foraging and antipredator behavior in shore crabs. *Anim. Behav.* **86**, 111–118. (doi:10.1016/j.anbehav.2013.05.001)
48. Wale MA, Simpson SD, Radford AN. 2013 Size-dependent physiological responses of shore crabs to single and repeated playback of ship noise. *Biol. Lett.* **9**, 20121103. (doi:10.1098/rsbl.2012.1103)
49. Thomas ML, Gray B, Simmons LW. 2011 Male crickets alter the relative expression of cuticular hydrocarbons when exposed to different acoustic environments. *Anim. Behav.* **82**, 49–53. (doi:10.1016/j.anbehav.2011.03.023)