

RESEARCH PAPER

Shared origins of a key enzyme during the evolution of C₄ and CAM metabolism

Pascal-Antoine Christin^{1,2,*}, Monica Arakaki^{2,3}, Colin P. Osborne¹, Andrea Bräutigam⁴, Rowan F. Sage⁵, Julian M. Hibberd⁶, Steven Kelly⁷, Sarah Covshoff⁶, Gane Ka-Shu Wong^{8,9,10}, Lillian Hancock² and Erika J. Edwards²

¹ Department of Animal and Plant Sciences, University of Sheffield, Western Bank, Sheffield S10 2TN, UK

² Department of Ecology and Evolutionary Biology, Brown University, 80 Waterman St., Providence, RI 02912, USA

³ Departamento de Botánica, Facultad de Ciencias Biológicas and Museo de Historia Natural – UNMSM, Av. Arenales 1256, Lima 11, Peru

⁴ Institute of Plant Biochemistry, Heinrich-Heine University, 40225 Duesseldorf, Germany

⁵ Department of Ecology and Evolutionary Biology, University of Toronto, 25 Willcocks Street, Toronto, Ontario M5S 3B2, Canada

⁶ Department of Plant Sciences, University of Cambridge, Cambridge CB2 3EA, UK

⁷ Department of Plant Sciences, University of Oxford, Oxford OX1 3RB, UK

⁸ Department of Biological Sciences, University of Alberta, Edmonton, Alberta T6G 2E9, Canada

⁹ Department of Medicine, University of Alberta, Edmonton, Alberta T6G 2E1, Canada

¹⁰ BGI-Shenzhen, Beishan Industrial Zone, Yantian District, Shenzhen 518083, China

* To whom correspondence should be addressed. E-mail: p.christin@sheffield.ac.uk

Received 29 November 2013; Revised 31 January 2014; Accepted 3 February 2014

Abstract

CAM and C₄ photosynthesis are two key plant adaptations that have evolved independently multiple times, and are especially prevalent in particular groups of plants, including the Caryophyllales. We investigate the origin of photosynthetic PEPC, a key enzyme of both the CAM and C₄ pathways. We combine phylogenetic analyses of genes encoding PEPC with analyses of RNA sequence data of *Portulaca*, the only plants known to perform both CAM and C₄ photosynthesis. Three distinct gene lineages encoding PEPC exist in eudicots (namely *ppc-1E1*, *ppc-1E2* and *ppc-2*), one of which (*ppc-1E1*) was recurrently recruited for use in both CAM and C₄ photosynthesis within the Caryophyllales. This gene is present in multiple copies in the cacti and relatives, including *Portulaca*. The PEPC involved in the CAM and C₄ cycles of *Portulaca* are encoded by closely related yet distinct genes. The CAM-specific gene is similar to genes from related CAM taxa, suggesting that CAM has evolved before C₄ in these species. The similar origin of PEPC and other genes involved in the CAM and C₄ cycles highlights the shared early steps of evolutionary trajectories towards CAM and C₄, which probably diverged irreversibly only during the optimization of CAM and C₄ phenotypes.

Key words: C₄ photosynthesis, CAM photosynthesis, co-option, evolution, phosphoenolpyruvate carboxylase (PEPC), phylogenetics.

Introduction

During the evolutionary diversification of organisms, ecological selection pressures sometimes lead to the emergence of similar phenotypes in distantly related species. A good example of such convergent evolution is the recurrent emergence of CO₂-concentrating mechanisms (CCMs) as an adaptation to

environmental CO₂ depletion (Raven *et al.*, 2008). CCMs have arisen through the assembly of novel biochemical pathways, which increase the internal concentration of CO₂ around Rubisco before its fixation by the C₃ photosynthetic cycle (Christin and Osborne, 2013). In flowering plants, the most

Abbreviations: AIC, Akaike information criteria; CCM, CO₂-concentrating mechanism; PEPC, phosphoenolpyruvate carboxylase; rpm, reads per million of alignable reads.

© The Author 2014. Published by Oxford University Press on behalf of the Society for Experimental Biology.

This is an Open Access article distributed under the terms of the Creative Commons Attribution License (<http://creativecommons.org/licenses/by/3.0/>), which permits unrestricted reuse, distribution, and reproduction in any medium, provided the original work is properly cited.

frequent and successful CCMs are C₄ and CAM photosynthesis (Keeley and Rundel, 2003). The C₄ and CAM CCMs differ in the overall mechanism of atmospheric CO₂ concentration, but the biochemical cycles are similar (Osmond, 1978; Hatch, 1987). Plants of both types fix inorganic carbon by phosphoenolpyruvate carboxylase (PEPC). In C₄ plants, the resulting acid is typically modified and transported to another cell, where CO₂ is released to feed the C₃ cycle that is active within these cells (Hatch, 1987; Sage *et al.*, 2012). In CAM plants, a similar CCM occurs in which the initial carboxylation by PEPC and subsequent decarboxylation and refixation by Rubisco are temporally rather than physically separated. At night, PEPC fixes inorganic carbon into organic compounds, which are stored as malate in the vacuole until daytime, when the cycle is completed and CO₂ is released to supply the C₃ cycle (Osmond, 1978; Borland and Taybi, 2004).

The CAM and C₄ pathways are complex traits, involving dozens of enzymes that fulfil different functions compared with the isoforms in the C₃ ancestors (Bräutigam *et al.*, 2011; Gowik *et al.*, 2011). For the constituent enzymes investigated so far, the new function requires alterations in the expression pattern and/or its catalytic properties (Finnegan *et al.*, 1999; Tausta *et al.*, 2002; Svensson *et al.*, 2003; Gowik and Westhoff, 2011; Ludwig, 2011). For instance, the PEPC enzyme is ubiquitous in plants, where multiple isoforms are responsible for various non-photosynthetic functions (Lepiniec *et al.*, 1994; Aubry *et al.*, 2011; Gowik and Westhoff, 2011). The C₄-specific forms evolved from non-photosynthetic genes through adaptation of the catalytic properties to the new metabolic context (Dong *et al.*, 1998; Gowik and Westhoff, 2011). In particular, the affinity of PEPC for its substrate PEP was decreased, and its sensitivity to feedback inhibition by malate was reduced (Bauwe and Chollet, 1986; Bläsing *et al.*, 2000; Svensson *et al.*, 2003; Gowik *et al.*, 2006; Lara *et al.*, 2006). In C₄ grasses and sedges, this was achieved through numerous adaptive amino acid changes (Christin *et al.*, 2007; Besnard *et al.*, 2009).

Both the CAM and C₄ pathways also require a specialized leaf anatomy (Hattersley, 1984; Nelson *et al.*, 2005). Despite this apparent complexity, the C₄ trait evolved a minimum of 62 times independently in flowering plants (Sage *et al.*, 2011). While a precise tally is not yet available, it is likely that the total number of CAM origins will be even greater (Edwards and Ogburn, 2012). These numerous origins of novel photosynthetic types are, however, not evenly distributed across the phylogeny of flowering plants. While certain major lineages completely lack CCMs, others present a large number of independent origins of CAM, C₄ or both (Crayn *et al.*, 2004; Sage *et al.*, 2011; Edwards and Ogburn, 2012). The high occurrence of C₄ origins in some groups of angiosperms has been explained by different factors, with an emphasis on ecological and anatomical predispositions, as well as possible genomic predispositions (Sage, 2001; Monson, 2003; Christin *et al.*, 2013a, 2013b; Griffiths *et al.*, 2013). The existence of anatomical and/or ecological predispositions for CAM evolution might similarly explain the repeated incidence of this CCM in some groups (Edwards and Ogburn, 2012), although this has never been rigorously tested.

The frequency of occurrence of CCMs is particularly high in the eudicot clade Caryophyllales, which encompasses many C₄ origins (Kadereit *et al.*, 2003; Christin *et al.*, 2011; Sage *et al.*, 2011; Kadereit *et al.*, 2012) and also several CAM lineages, including constitutive CAM (e.g. cacti) and facultative CAM types that can switch to CAM depending on environmental conditions (Guralnick and Ting, 1987; Guralnick *et al.*, 2008; Nyffeler *et al.*, 2008). Of special interest are species of *Portulaca*, which are the only plants known to be capable of performing both C₄ and CAM cycles (Koch and Kennedy, 1980, 1982; Guralnick *et al.*, 2002). The majority of *Portulaca* species are C₄ plants, with the associated anatomical specialization, but several species exhibit CAM-like physiology when grown in water-limited conditions (Kraybill and Martin, 1996; Guralnick *et al.*, 2002). Exposure to drought triggers physiological and biochemical changes in these *Portulaca* species, with different expression levels and catalytic properties of several C₄/CAM enzymes, and slight alterations in their leaf anatomy (Mazen, 1996, 2000; Lara *et al.*, 2003, 2004). In molecular phylogenies, *Portulaca* is nested within Portulacaceae (Nyffeler and Egli, 2010; Ocampo and Columbus, 2010; Arakaki *et al.*, 2011), and is apparently the only C₄ member of this group that is otherwise rich in species with varying degrees of CAM photosynthesis, the best known of which are cacti. Despite these intriguing patterns, neither sequence nor expression data for known C₄/CAM genes have been analysed in *Portulaca* or its relatives.

The large number of CCM origins within Caryophyllales might suggest that this clade is especially prone to transitions between photosynthetic types. However, the history of photosynthetic transitions within the clade is still unclear. In particular, it is unknown if CAM and C₄ origins represent completely independent evolutionary phenomena, or are distinct end-points to a partially shared evolutionary trajectory (Edwards and Ogburn, 2012). To increase our understanding of CCM origins in Caryophyllales, we studied the evolution of genes encoding PEPC, a key enzyme common to all CAM and C₄ cycles. In addition, we investigated in detail the transcriptome of *Portulaca* individuals operating either the C₄ or CAM cycles. Our comparative analyses shed new light on the shared history of genes involved in CAM and C₄ photosynthesis.

Material and methods

Diversity of genes encoding PEPC in plants

To reconstruct the history of the multigene family encoding PEPC, complete cDNA sequences available in the GenBank database were first retrieved. These were used as a query of BLAST searches against completely sequenced nuclear genomes available on Phytozome (Goodstein *et al.*, 2012). This initial dataset was increased by screening genomic DNA from representatives of diverse Caryophyllales lineages and photosynthetic types through PCR to isolate genes encoding PEPC (Supplementary Tables S1 and S2, available at *JXB* online). These DNAs were first screened with primers *ppc-1204-For* and *ppc-2890-Rev* previously used to isolate PEPC genes from Molluginaceae, a family from Caryophyllales (Christin *et al.*, 2011). These primers amplify a fragment encompassing exons 8 to 10, which represents about half of the whole coding sequence and is known to include

major determinants of the C₄-specific properties of PEPC (Bläsing *et al.*, 2000; Engelmann *et al.*, 2002). PCR, cloning and sequencing were performed as previously described (Christin *et al.*, 2011). Preliminary analyses indicated that numerous PEPC genes were present in some Caryophyllales genomes. To increase the likelihood of sampling specific copies, additional primers were designed with the purpose of increasing the PCR specificity for certain gene lineages (Supplementary Table S3, available at *JXB* online). These additional PCRs were conducted as for the primers *ppc-1204-For* and *ppc-2890-Rev*. The PCR products were purified and directly sequenced with one of the primers used for the PCR. Chromatograms were visually inspected and PCR products were cloned only if multiple genes were detected by the presence of overlapping peaks.

Exons were identified by homology to annotated sequences and following the GT-AG rule. All coding sequences, retrieved from public databases or isolated through PCR, were translated into protein sequences and aligned with ClustalW (Thompson *et al.*, 1994). The alignment was visually inspected, manually refined, and replaced with the corresponding nucleotide sequences, which were later used for analyses. A preliminary phylogenetic tree identified two distantly related groups of PEPC encoding genes that diverged before the evolution of land plants (*ppc-1* and *ppc-2*; Fig. 1), each represented by ferns, gymnosperms, and flowering plants. Despite clear homology, the two groups were highly divergent, leading to ambiguities in the alignment. Each group was consequently analysed separately.

Transcriptome analysis of *Portulaca oleracea*

The species *Portulaca oleracea* was selected for transcriptome analyses to identify CAM- and C₄-specific genes, with a special focus on PEPC. Seeds originating from Syria were provided by the USDA-ARS (GRIN accession: Grif 14515). Plants were grown in 3-inch pots of equal-parts gravel/calcinated clay perlite mix, and in a Conviron E7/2 plant growth chamber (Conviron Ltd., Winnipeg, Manitoba, Canada) with 14 hours of daylight. The growth chamber was illuminated with twelve 32-W fluorescent lamps and four 60-W incandescent lamps. Temperature was kept at 22 °C from 3 h before dark until after 3 h of light, and was increased to 28 °C for the middle portion of the light period. The position of pots within the growth chamber was randomized daily.

On the first day of the experiment (5 March 2012), all plants were bottom-watered and seedlings were split into two groups. One group was bottom-watered every 2–4 days, while the other group was bottom-watered less than once a week (Supplementary Table S4, available at *JXB* online). Nutrients were added to the water periodically at a concentration of 1:100 (w/v) of K:P:N=20:20:20. After 1 month under these conditions, leaves were collected, flash-frozen in liquid nitrogen, and stored at –80 °C. Two individuals per group were sampled twice, after 4 h of light and after 2 h of dark. To control for stress effects that might have been induced by leaf cutting, the first individual from each group was sampled first during the day and then the following night, while the second individual was sampled first during the night and then the following day. An equivalent number of young and mature leaves were collected from the light and dark samples. Two additional individuals per group (watered frequently and watered occasionally) were sampled for acid titration (see below). One individual of each group was sampled first at the end of the dark period (1 h before light) and then at the end of the light cycle (2 h before dark). The sampling order was inverted for the second individual of the same group.

RNA was extracted from several leaf fragments using the FastRNA™ Pro Green Kit (MP Biomedicals, OH, USA). Several RNA extractions per sample (one individual in one condition) were pooled and prepared for sequencing using the Illumina TruSeq mRNA Sample Prep Kit (Illumina Inc., San Diego, CA, USA). Fragments of the cDNA libraries between 400 and 450 bp long were selected, and the different samples were marked with specific barcodes, multiplexed and sequenced using an Illumina HiSeq 2000 instrument, as paired-end 100 bp reads.

Titrateable acidity

The titrateable acidity was measured at the end of the dark phase and at the end of the light phase. An accumulation of acids during the night followed by consumption during the day is indicative of a CAM cycle (Silvera *et al.*, 2005). Three leaves were analysed for each of the eight combinations of individuals/sampling time. Frozen leaves were weighed and immediately ground briefly in mortar and pestle and then boiled in 50 ml 20% ethanol. After cooling, pH was slowly brought to 7 by adding 0.1 N NaOH in 5 or 10 µl increments. The titrateable acidity was calculated as the amount of H⁺ equivalents required to neutralize the leaf extracts (Silvera *et al.*, 2005). Despite variability among individuals and leaves, the plants watered occasionally showed a clear increase of titrateable acidity at the end of the dark period (Fig. 2). These results confirm that less frequent watering triggered a CAM physiology in *Portulaca oleracea*.

Illumina data assembly and phylogenetic annotation

The reads corresponding to each of the eight different samples were assembled individually using the software Trinity (Grabherr *et al.*, 2011) as implemented in the Agalma pipeline (Dunn *et al.*, 2013). Reads from each Illumina run were mapped against the corresponding individual assembly using the software Bowtie 2 (Langmead and Salzberg, 2012) and its mixed model, which allows unpaired alignments when paired alignments fail. Only one of the best alignments chosen randomly was reported per read. The number of reads aligned to each contig was used to compute reads per million of alignable reads (rpm). Sequencing and mapping statistics are given in Supplementary Table S5 (available at *JXB* online).

The relative transcript abundance of each gene within each of the C₄-related multigene families was estimated by assigning contigs to gene lineages based on phylogenetic analyses (Christin *et al.*, 2013a). For genes encoding C₄-related enzymes (Supplementary Table S6, available at *JXB* online), sequences available in Genbank for Caryophyllales and other plant lineages were extracted based on their annotation. A BLAST search was used to extract homologous loci for predicted cDNA from several completely sequenced genomes (*Arabidopsis thaliana*, *Brachypodium distachyon*, *Carica papaya*, *Glycine max*, *Oryza sativa*, *Populus trichocarpa*, *Sellaginella moellendorffii*, *Sorghum bicolor*, *Selaginella moellendorffii* and *Vitis vinifera*). For each C₄-related enzyme, the dataset assembled from sequences retrieved from Genbank and complete genomes was used as a query of a BLAST search against each of the assembled transcriptomes. The longest matching region for each contig was extracted from the BLAST results when larger than 50 bp. Each of these was successively aligned to the reference dataset using Muscle (Edgar, 2004). The resulting alignment was used to infer one phylogenetic tree per contig under maximum likelihood as implemented in PhyML (Guindon and Gascuel, 2003) using a GTR+G model. The resulting phylogenetic trees were inspected and each contig was assigned to a gene lineage if clearly nested within. The rpm values of all contigs assigned to a given gene lineage were summed to obtain an estimate of the transcript abundance of the gene lineage.

The assignment of contigs to gene lineages was repeated with a reference dataset composed of exons 8–10 of genes encoding PEPC. Caryophyllales sequences isolated by PCR or retrieved from Genbank were used if complete for the studied fragment and assigned to the gene lineage *ppc-1E1* based on phylogenetic analyses (see Results). In order to increase the size of this dataset, the corresponding segment of matching contigs from *Portulaca* transcriptomes that represented at least half of the studied fragment were manually aligned with the dataset. Three contigs that covered the whole studied segment and which were clearly different from each other, as well as from *Portulaca* genes isolated by PCR, were added to the reference dataset. All matching *Portulaca* contigs were then successively placed in a phylogeny with this reference dataset and the total rpm values of each *ppc-1E1* gene lineage was computed as described above.

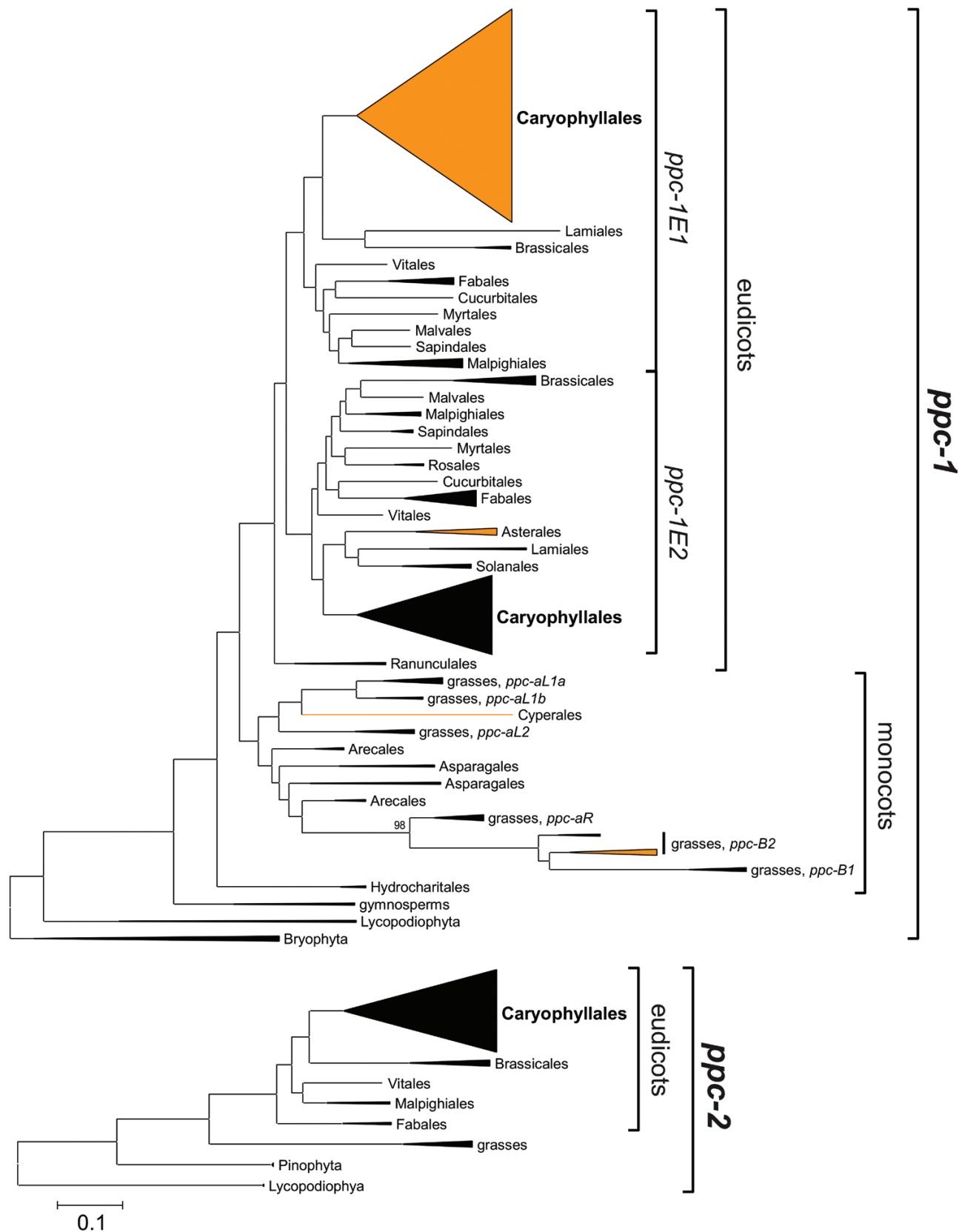


Fig. 1. Phylogenetic relationships among PEPC-encoding genes from land plants. The phylogenetic trees were obtained through Bayesian inference on each main gene lineage; *ppc-1* and *ppc-2*. Taxonomic groups are compressed, with the size of triangles proportional to the number of sequences in the group. Gene lineages and main clades of flowering plants are delimited on the right. Clades containing some genes with a Ser780 are in orange. Details, including support values, are available in [Supplementary Figs S1 and S2](#) (available at *JXB* online). The scale bar represents expected substitutions per site. (This figure is available in colour at *JXB* online.)

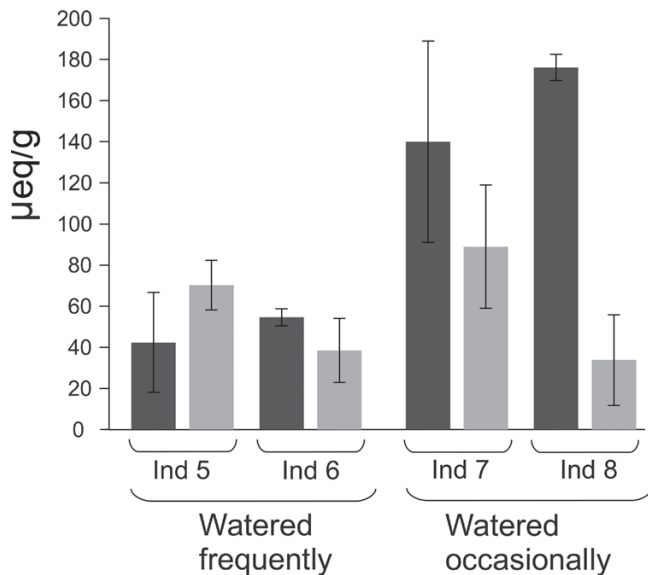


Fig. 2. Effect of the water regime on titratable acidity. The titratable acidity (in microequivalents per gram of frozen weight, $\mu\text{eq/g}$) is indicated for samples taken at the end of the dark phase (dark grey) and at the end of the light phase (light grey). The error bars indicate standard deviations over three replicates.

Screening of *ppc* genes from other *Portulaca* transcriptomes

The IKP project has sequenced transcriptomes from 1000 different species of plants, including several *Portulaca* species (<http://www.onekp.com/>; Johnson *et al.*, 2012). RNA for *Portulaca* species was extracted from leaves sampled during the day. Of these, *P. cryptopetala* is a putative C_3 - C_4 intermediate species (Voznesenskaya *et al.*, 2010). Three additional clades of *Portulaca* are represented in the IKP project (clades based on Ocampo and Columbus, 2012 and Ocampo *et al.*, 2013): ‘Oleracea’ (*P. molokiniensis*, *P. oleracea*, *P. suffruticosa*), ‘Pilosa’ (*P. grandiflora*, *P. amilis*), and ‘Umbraticola’ (*P. umbraticola*). Sequences of the different *Portulaca* species corresponding to *ppc-1E1* were retrieved through a BLAST search with *ppc-1E1* isolated in the present study used as a query. Sequences were considered further only if they aligned with the reference dataset along more than 500 bp. The selected sequences were aligned with the *ppc-1* sequences isolated from genomic DNA or extracted from the *P. oleracea* transcriptome generated in this study (see above). The alignment was manually refined and only the longest of groups of identical sequences from the IKP data was used for analyses.

Phylogenetic analyses and codon models

The two datasets composed of all *ppc-1* and *ppc-2* genes retrieved from available databases or generated in this study were used to infer phylogenetic trees with MrBayes 3.2.1 (Ronquist and Huelsenbeck, 2003). The general time reversible model of nucleotide substitution with a gamma-shape parameter and a proportion of invariants (GTR+G+I) was used. For *ppc-2*, two parallel analyses each composed of four chains were run for 20 000 000 generations, sampling a tree every 1000 generations after a burn-in period of 10 000 000 generations. Due to slow convergence of parallel runs, the number of parallel chains was increased to sixteen for analyses of *ppc-1*. For this dataset, two different analyses were run for 10 000 000, sampling a tree each 1000 generations after a burn-in period of 4 000 000 generations. Consensus trees were computed from all trees sampled after the burn-in period. Convergence of the analyses and adequacy of the burn-in period were determined using Tracer (Rambaut and Drummond, 2007).

In order to represent the rate of amino acid changes, the topologies inferred from the whole *ppc-1* and *ppc-2* datasets were used to infer branch lengths based on amino acid sequences while keeping

the topology constant. These analyses were performed in PhyML, under a JTT+G substitution model. Statistical tests of adaptive evolution were also conducted on the group of *ppc-1E1* sequences from Caryophyllales using codon models implemented in codeml of the PAML package (Yang, 2007). These models use the ratio of non-synonymous mutation rate per synonymous mutation rate (ω) as a proxy of selective pressures. An ω smaller than 1 indicates purifying selection, a value of 1 indicates relaxed selection, and a value greater than 1 indicates adaptive evolution. Different models allow ω to vary among sites of the protein or among both sites and branches of the phylogeny (Yang and Nielsen, 2002). The site model without adaptive evolution (M1a) was compared with the site model assuming adaptive evolution on some sites but on all branches (M2a), as well as to several branch-site models assuming adaptive evolution only on some sites and on some branches (referred to as foreground branches; model A). In these branch-site models, foreground branches have to be defined a priori. Different sets of foreground branches were successively selected, and the likelihoods were compared using Akaike information criteria (AIC). In this first model (a), foreground branches were defined as each branch leading to a group of putative C_4 forms, to the group of sequences belonging to the CAM genera *Mesembryanthemum* and *Drosanthemum*, or to the group of sequences belonging to *Portulaca* and present at high transcript abundance in the night samples (putative CAM form; see Results). In the other models, entire gene lineages present in Portulacineae were successively added to the foreground branches: (b) branches a + *ppc-1E1c*, (c) branches b + *ppc-1E1d* + *ppc-1E1e*, (d) branches c + *ppc-1E1b*, and (e) branches d + *ppc-1E1a*.

Since the evolutionary history of C_4 photosynthesis in the genus *Portulaca* is debated (Ocampo *et al.*, 2013), the group of *Portulaca* sequences that contains putative C_4 forms (*ppc-1E1a* and *ppc-1E1a'*) was analysed in more detail. Parallel adaptive genetic changes can bias the phylogenetic reconstruction when they occur in closely related taxa, and considering only third positions of codons can help recover the true phylogenetic relationships (Christin *et al.*, 2007, 2012). To avoid a potential bias due to adaptive evolution, a phylogenetic tree was inferred as described above but considering only third positions of codons from *Portulaca ppc-1E1a* and *ppc-1E1a'* sequences. The inferred topology was used to test alternative scenarios of adaptive evolution using the codon models described above. In addition, to the site models M1a and M2a, different branch-site models (A) were compared. Foreground branches were set following three evolutionary scenarios: adaptive evolution at the base of *Portulaca* (on the branch leading to *ppc-1E1a'*; single C_4 optimization), at the base of each C_4 clade of *Portulaca ppc-1E1a'* (multiple C_4 optimizations); and finally at the base of each C_4 and C_3 - C_4 clade of *Portulaca ppc-1E1a'* (multiple C_4 and C_3 - C_4 optimizations).

Results

PEPC multigene family

The phylogenetic tree inferred using all genes encoding PEPC retrieved from GenBank, the IKP project, or generated in this study showed that a gene duplication occurred before the emergence of land plants and produced two groups of distantly related genes present in most plant genomes (*ppc-1* and *ppc-2*; Fig. 1; Gowik and Westhoff, 2011). One of these groups (*ppc-1*) contains all the C_4 -specific PEPC genes documented so far (Rao *et al.*, 2002; Svensson *et al.*, 2003; Gowik *et al.*, 2006; Christin *et al.*, 2007, 2011; Besnard *et al.*, 2009; Gowik and Westhoff, 2011). The phylogenetic relationships in each group are compatible with the species relationships predicted from other markers (Supplementary Figs S1 and S2, available at JXB online; Soltis *et al.*, 2011). The gene

ppc-2 is present as a single copy in all the species considered (Fig. S2). No gene duplication of *ppc-1* is detectable before the split of eudicots and monocots, but several gene duplications led to the six gene lineages present in grass genomes as shown previously (namely *ppc-aL1a*, *ppc-aL1b*, *ppc-aL2*, *ppc-aR*, *ppc-B1*, and *ppc-B2*; Fig. S1; Christin and Besnard 2009). In addition, a gene duplication occurred soon after the early diversification of eudicots, leading to two gene lineages present in most eudicots and named *ppc-1E1* and *ppc-1E2* (Fig. 1 and Supplementary Fig. S1, available at *JXB* online; these correspond to *ppc-1* and *ppc-2* in Christin *et al.*, 2011).

Diversification of *ppc-1E1* in Caryophyllales

Genes belonging to the three *ppc* gene lineages present in eudicots were isolated from core Caryophyllales through PCR screening of genomic DNA (Supplementary Tables S1 and S2, available at *JXB* online). The phylogenetic trees of Caryophyllales *ppc-2* and *ppc-1E2* were consistent with published phylogenies based on chloroplast and nuclear markers (Brockington *et al.*, 2009; Arakaki *et al.*, 2011; Kadereit *et al.*, 2012) and no ancient gene duplication was detectable (Supplementary Figs S1 and S2, available at *JXB* online). On the other hand, *ppc-1E1* is present in a high number of copies in members of the Portulacineae (namely *ppc1E1a* to *ppc-1E1e* in Fig. 3 and Supplementary Fig. S1, available at *JXB* online), indicating that this gene lineage was repeatedly duplicated during the early diversification of this clade. The species relationships deduced from each of these gene lineages are consistent with those deduced from chloroplast markers (Arakaki *et al.*, 2011). The *ppc-1E1a* gene lineage includes sequences isolated previously from cDNA of two members of Portulacineae, *Pereskia aculeata* and *Selenicereus vitii* (Gehrig *et al.*, 2001).

The *ppc-1E1* lineage contains genes encoding putative C₄-specific forms in *Alternanthera* (Gowik *et al.*, 2006), *Bienertia* and *Suaeda* (Lara *et al.*, 2006), as well as genes encoding putative CAM-specific forms in *Mesembryanthemum* (Rickers *et al.*, 1989). Most C₄-specific PEPC genes studied previously encode a serine residue at the position homologous to position 780 of the maize PEPC protein (numbering based on *Zea mays* sequence CAA33317; hereafter referred to as Ser780), although this Ser780 is not necessary for the C₄ function (Rao *et al.*, 2008). In *Flaveria*, Ser780 has been shown to be a major determinant of the C₄ properties of PEPC (Bläsing *et al.*, 2000; Engelmann *et al.*, 2002; Svensson *et al.*, 2003). The homologous position is occupied by a conserved alanine in all characterized PEPC genes not involved in C₄ photosynthesis (Svensson *et al.*, 2003; Christin *et al.*, 2007, 2011; Besnard *et al.*, 2009). In the present dataset, a Ser780 is encoded by *ppc-1E1* genes from the C₄ taxa in Amaranthaceae, Aizoaceae, and Molluginaceae, while it is not encoded by homologous genes of C₃ taxa of the same families and from other gene lineages (Fig. 3 and Supplementary Figs S1 and S2, available at *JXB* online). This supports earlier suggestions that *ppc-1E1* encodes the C₄-specific PEPC in numerous C₄ Caryophyllales (Gowik *et al.*, 2006; Christin *et al.*, 2011; Gowik and Westhoff, 2011). However, the Ser780 is not encoded by *ppc-1E1* genes from some C₄ taxa in Nyctaginaceae and Aizoaceae.

Most members of Portulacineae have the ability to perform some degree of CAM (Guralnick *et al.*, 2008; Nyffeler *et al.*, 2008). The *ppc-1E1c* genes of Portulacineae encode a Ser780 in most species (Fig. 3). Sequences isolated by PCR from cDNA extracted from the stems of *Nopalea* and *Echinocereus* at night belong to this gene lineage and encode a Ser780, which indicates that proteins encoded by *ppc-1E1c* might be involved in the CAM pathway of cacti. This is further supported by the isolation of *ppc-1E1c* sequences from cDNA of another cactus (*Hylocereus undatus*; NCBI accession JF966382). However, the Ser780 residue is not encoded by *ppc-1E1c* genes in the sampled Montiaceae and in several of the sampled Didiereaceae (Supplementary Fig. S1, available at *JXB* online). In addition, the *ppc-1E1e* from *Ceraria* (Didiereaceae; Supplementary Fig. S1, available at *JXB* online) also encodes a Ser780. All other Portulacineae *ppc-1E1* gene copies and all *ppc-2* and *ppc-1E2* (with the exception of some sequences from *Flaveria* known to be involved in C₄ photosynthesis; Svensson *et al.*, 2003) encode the Ala780 typical of non-C₄ genes.

Transcriptome from *Portulaca oleracea*

Differences in estimates of transcript abundance of C₄-related genes between individuals grown under the same watering regime were small (Supplementary Table S6, available at *JXB* online). In the well-watered samples, some of the gene lineages encoding the enzymes of the C₄ pathway (β -CA, PEPC, NAD-MDH, NADP-MDH, ALA-AT, ASP-AT, PPDK, NAD-ME and NADP-ME) were present at high transcript abundance during the day (Supplementary Table S6, available at *JXB* online). With the exception of NADP-ME, these correspond to the enzymes postulated to play a role in the C₄ pathway of *P. oleracea* (Lara *et al.*, 2004). After 2 h in the dark, the transcript abundance of these enzymes remained substantial, although in most cases it was strongly reduced compared with the day sample (Supplementary Table S6, available at *JXB* online). The only exception is the gene for ALA-AT, which was present at higher transcript abundance in the dark than in the light. In addition, one of the individuals showed a slight increase in the transcript abundance of one of the genes for NADP-MDH at night while its abundance was extremely low in the other individual (Supplementary Table S6, available at *JXB* online).

In the samples watered less frequently, genes encoding the same enzymes were present at high transcript abundance during the day, although the levels were generally lower than in the well-watered sample (Supplementary Table S6, available at *JXB* online). At night, genes encoding all C₄-related enzymes were present at lower abundance, with the exception of genes for PEPC and NADP-MDH, for which the abundance of one gene lineage increased to reach levels equivalent to, or even higher than, those observed for the well-watered samples during the day (Table 1 and Supplementary Table S6, available at *JXB* online). This is consistent with the nocturnal part of the purported CAM cycle of *P. oleracea*, which is based on these two enzymes (Lara *et al.*, 2004). However, the nocturnal part was assumed to also involve carbonic anhydrase, but the transcript abundance of this enzyme is strongly reduced at night although it remains high (Supplementary Table S6, available

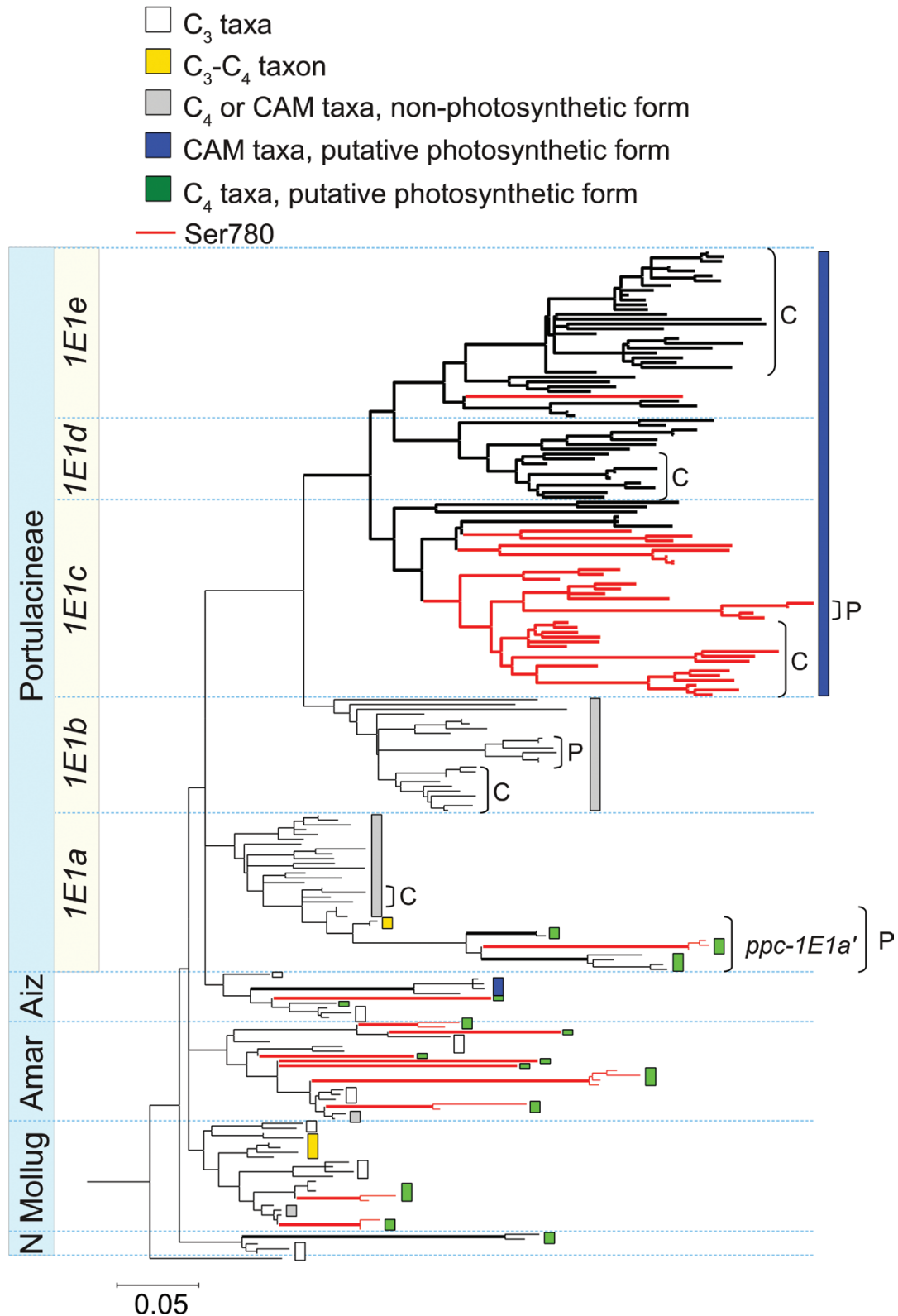


Fig. 3. Evolution of *ppc-1E1* in Caryophyllales. The topology was inferred on nucleotide sequences, but branch lengths were estimated based on amino acid sequences. The branch lengths inferred on nucleotide sequences, together with all species names and support values, are available in Fig. S1. Groups of genes encoding a Ser780 are highlighted by red branches. Branches where some sites underwent an excess of non-synonymous mutations according to the best model are thicker. Putative C₄ forms are delimited in green and putative CAM forms in blue. These were identified based either on transcript abundances in specific conditions, on the literature, or on an excess of amino acid changes in C₄/CAM species. Genes of C₄ or CAM taxa that represent putative non-photosynthetic duplicates are delimited in grey, those of C₃ taxa in white, and those of C₃-C₄ taxa in yellow. Families outside Portulacineae and gene lineages for Portulacineae are indicated on the left: N, Nyctaginaceae; Mollug, Molluginaceae; Amar, Amaranthaceae; Aiz, Aizoaceae. Subclades of interest are indicated on the right: P, *Portulaca*; C, cacti. The full phylogenetic tree is available in Fig. S3. The scale bar represents expected substitutions per site. (This figure is available in colour at JXB online.)

Table 1. Transcript abundances in rpm of PEPC-encoding genes in *Portulaca oleracea* grown in different conditions

Time	Day		Night		Day		Night	
	Watered frequently				Watered occasionally			
Condition								
Individual	1	2	1	2	3	4	3	4
<i>ppc-2</i>	13	14	6	1	5	30	7	17
<i>ppc-1E2</i>	44	41	40	29	14	10	5	14
<i>ppc-1E1a</i>	131	139	157	192	167	196	185	173
<i>ppc-1E1b</i>	0	1	0	7	6	18	0	0
<i>ppc-1E1c</i>	3	0	820	1180	277	338	7602	6823
<i>ppc-1E1a'</i>	9916	4697	6710	6052	7339	1868	1421	869

at *JXB* online). The transcript abundances suggest that a C₄ cycle is present in both well-watered and drought conditions, but it is complemented by a CAM cycle in drought conditions, as indicated previously (Mazen, 2000).

Detailed analysis of *P. oleracea* PEPC genes

The incorporation of contigs from the *P. oleracea* samples into the densely sampled Caryophyllales dataset allowed us to estimate the transcript abundance of each *ppc-1E1* gene lineage (Table 1). In addition to *ppc-1E2* and *ppc-2*, four distinct *ppc-1E1* genes were isolated from the transcriptomes of *P. oleracea*, only one of which was also isolated from genomic DNA (*ppc-1E1b*). One of these four genes was clearly nested within *ppc-1E1c* and two in *ppc-1E1a* (Supplementary Fig. S1, available at *JXB* online). The phylogenetic relationships suggest a recent duplication of *ppc-1E1a* in *Portulaca* and one of the duplicates was named *ppc-1E1a'*.

The genes *ppc-1*, *ppc-2*, *ppc-1E1a*, and *ppc-1E1b* were present at similarly low abundances in all samples (Table 1). By contrast, *ppc-1E1a'* was present at very high transcript abundances during the day in the well-watered samples (Table 1). This pattern is consistent with a function in the C₄ pathway, which is moreover supported by the Ser780 encoded by the gene. The abundance of *ppc-1E1a'* during the day decreased in one of the individuals that were watered less frequently and its abundance at night decreased in both individuals (Table 1). The gene *ppc-1E1c* was present at extremely low transcript abundances in the well-watered samples during the day. However, its abundance increased at night, and the nocturnal abundance was considerably higher in infrequently watered than in well-watered plants (Table 1). High nocturnal transcript abundance triggered by reduced water availability supports an involvement of the encoded enzyme in the CAM pathway of *P. oleracea*. This gene also encodes a Ser780.

Distribution of *ppc-1E1* genes in other *Portulaca* species and evidence of adaptive evolution

Using the 1KP transcriptome data, sequences corresponding to the genes *ppc-1E1a* and *ppc-1E1c* were retrieved from the *Oleracea* clade, while sequences corresponding to *ppc-1E1b* were retrieved from both *Oleracea* and *Pilosa* clades (Supplementary Fig. S1, available at *JXB* online). The RNA for this project was

isolated during the day and putative CAM-specific genes would likely be missed. The putative C₄ gene *ppc-1E1a'* was retrieved from the four *Portulaca* clades. One sequence attributed to *P. suffruticosa* was nested within *ppc-1E1a'* of the *Pilosa* clade (Fig. 4 and Supplementary Fig. S1, available at *JXB* online), which might indicate a biologically relevant phenomenon (e.g. hybridization) or a methodological problem (e.g. cross-contamination). Since these sequences were retrieved from leaf RNA isolated during the day, the presence of transcripts corresponding to *ppc-1E1a'* is compatible with the hypothesis that this gene is involved in C₄ photosynthesis of these different species.

The branch lengths estimated from amino acid sequences strongly vary among clades (Fig. 3 and Supplementary Fig. S3, available at *JXB* online). Since the variation is more pronounced than with nucleotide sequences (Supplementary Figs S1 and S2, available at *JXB* online), it indicates an excess of non-synonymous mutations. In Molluginaceae and Amaranthaceae, clear increases in the rate of amino acid substitutions occurred on branches leading to genes encoding putative C₄-specific enzymes. In Aizoaceae, a similar acceleration is visible on the branch leading to the putative C₄ gene of *Trianthema*, but also to the genes of the CAM plant *Mesembryanthemum crystallinum*. In addition, the branch leading to the C₄ Nyctaginaceae *Boerhavia* underwent many amino acid changes (Fig. 3), which is suggestive of functional divergence, potentially as an adaptation to the C₄ context. These *ppc-1E1* genes likely encode proteins involved in CCMs, but do not encode the Ser780. This indicates that changes happened in different parts of the coding sequences. The monophyletic group composed of Portulacineae *ppc-1E1c*, *ppc-1E1d*, and *ppc-1E1e* is also characterized by increased rates of amino acid substitutions, with further increases in some branches, such as those leading to *ppc-1E1c* from *Portulaca*, but also the cacti (Fig. 3 and Supplementary Fig. S3, available at *JXB* online). Within Portulacineae *ppc-1E1a'*, long branches lead to the putative C₄-specific genes of *Portulaca*. However, most of the amino acid substitutions occurred after the divergence of the four clades (*sensu* Ocampo and Columbus, 2012) and comparatively few happened on the branch leading to the C₃-C₄ *P. cryptopetala* (Fig. 3).

The action of adaptive evolution on some branches of the phylogeny is supported by codon models. While the model assuming positive selection on some sites but all branches of Caryophyllales *ppc-1E1* was not better than the null model, assuming increased rates of non-synonymous changes on

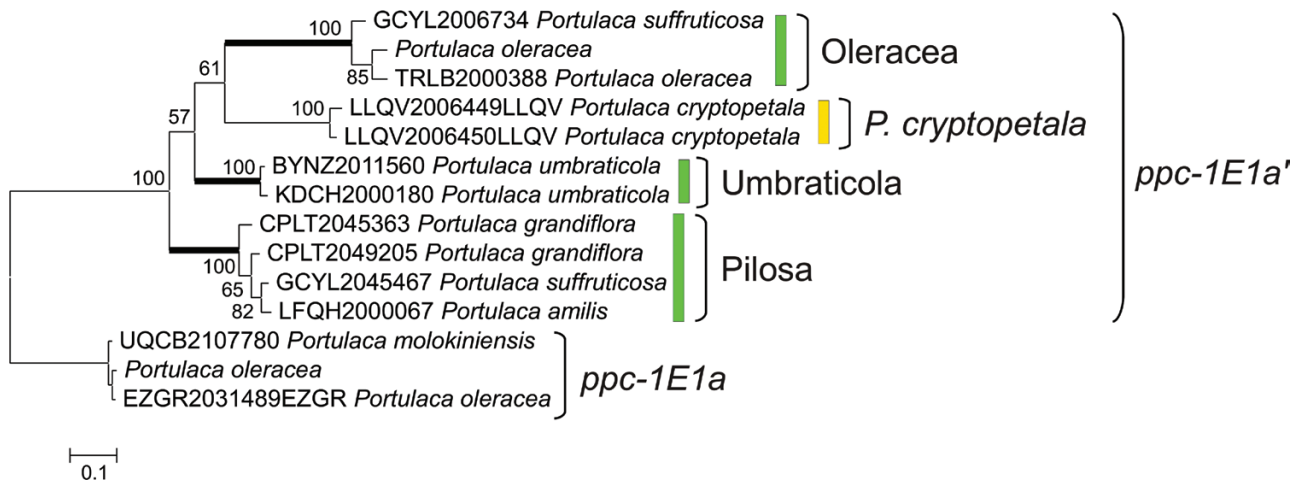


Fig. 4. Evolution of C_4 -specific PEPC genes in *Portulaca*. This phylogeny of *Portulaca ppc-1E1a/ppc-1E1a'* was inferred from third positions of codons. Bayesian support values are indicated near branches and clades are delimited on the right. Putative C_4 forms are highlighted in green and putative C_3 – C_4 forms in yellow. Thick branches represent inferred episodes of adaptive evolution. The scale bar represents expected substitutions per site. (This figure is available in colour at *JXB* online.)

Table 2. Codon models for *ppc-1E1* of Caryophyllales

Model	Foreground branches	Number of parameters	Log-likelihood	AIC score
M1a ^a	–	399	–49702	10202
M2a ^b	–	401	–49702	10206
A ^c	(a) each C_4 and CAM groups ^d	401	–49588	99978
A ^c	(b) a + <i>ppc-1E1c</i>	401	–49523	99848
A ^c	(c) b + <i>ppc-1E1d</i> + <i>ppc-1E1e</i>	401	–49383	99568
A ^c	(d) c + <i>ppc-1E1b</i>	401	–49416	99634
A ^c	(e) d + <i>ppc-1E1a</i>	401	–49556	99914

^a Site model without adaptive evolution.

^b Site model with adaptive evolution.

^c Branch-site model with adaptive evolution.

^d Except for Portulacineae other than *Portulaca*.

some sites but some branches only led to a very significant increase in likelihood (Table 2). While all the tested sets of foreground branches led to a significant increase of likelihood, the model assuming increased rates of non-synonymous mutations in the whole of Portulacineae *ppc-1E1c*, *ppc-1E1d*, and *ppc-1E1e* gene lineages in addition to C_4 and CAM clades outside of Portulacineae produced the best AIC (Table 2). In this model, 16.8% of sites were estimated to undergo more non-synonymous mutations in the selected foreground branches, although the optimized *dN/dS* ratio was not different from 1.

In the phylogenetic tree inferred from all nucleotides, *P. cryptopetala ppc-1E1a'* is sister to all other *Portulaca* (Supplementary Fig. S1, available at *JXB* online), but this species is sister to the Oleracea clade in the tree inferred on third positions of codons (Fig. 4), as expected based on other markers (Ocampo and Columbus, 2012; Ocampo *et al.*, 2013). The model assuming adaptive evolution in the entire *Portulaca ppc-1E1a/ppc-1E1a'* clade was not different from the model without

adaptive selection. Similarly, assuming adaptive evolution at the base of *ppc-1E1a'* did not improve the likelihood. However, assuming adaptive evolution at the base of each C_4 clade of *ppc-1E1a'* significantly improved the model ($\chi^2=38.2$, $df=2$, $P<0.00001$), which indicates that 10.7% of the sites have evolved under adaptive evolution on these branches, with a *dN/dS* ratio of 1.35. The model assuming adaptive evolution on branches leading to both C_4 and C_3 – C_4 clades was also better than the null model, but not as good as the model without adaptive evolution on the C_3 – C_4 branch (difference of AIC >18).

Discussion

Increased rates of amino acid changes in both C_4 and CAM origins

The evolution of genes encoding PEPC in the Caryophyllales is characterized by increased rates of amino acid substitutions and the recurrence of several amino acid changes previously detected in C_4 monocots (e.g. E572Q, H665N, and A780S; Christin *et al.*, 2007; Besnard *et al.*, 2009). These increased rates of amino acid change are not limited to C_4 taxa, but are also observed in CAM lineages, including Aizoaceae and Portulacineae species (Fig. 3), and the excess of non-synonymous mutations on these branches was confirmed with codon models (Table 2). C_4 - and CAM-specific PEPC differ in the timing of their activity, but the catalytic challenges they face in the two cycles are similar, because in both cases the concentrations of both substrates and products are greatly increased. The evolution of both C_4 - and CAM-specific PEPC consequently required adaptive mutations, some of which are shared among multiple origins, while several are probably specific to one or a few clades and might depend on the other amino acid mutations undergone by the coding sequence of the gene before its co-option.

In Portulacineae, the *ppc-1E1* gene lineage is present in five copies, which appeared through several rounds of gene

duplications (Fig. 3 and Supplementary Fig. S1, available at *JXB* online). The three most recent copies, namely *ppc-1E1c*, *ppc-1E1d*, and *ppc-1E1e*, are all characterized by increased rates of amino acid substitutions (Fig. 3 and Table 2). The Portulacineae encompass species with different degrees of CAM metabolism (Guralnick and Jackson, 2001; Nyffeler *et al.*, 2008). The high number of *ppc-1E1* copies could have promoted neofunctionalization of the genes by relaxing selective constraints, facilitating the diversification of photosynthetic types in this group. A gradual upregulation of the CCM over time would have triggered successive periods of adaptive genetic changes in response to modifications of the catalytic environment, explaining the high rates of amino acid substitutions sustained in the entire clade (Fig. 3). For instance, the accumulation of mutations on the branches leading to *ppc-1E1c* of CAM-constitutive cacti (Cactoideae and Opuntioideae; Fig. 3) could be linked to the evolution of a more efficient CAM pathway in these taxa. This contrasts with the evolution of C₄-specific PEPC where adaptive changes are concentrated at the base of each C₄ group (Fig. 3; Christin *et al.*, 2007; Besnard *et al.*, 2009), and might indicate that the optimization of PEPC for the CAM function is spread over a longer time period.

C₄ origins in Portulaca within a CAM-like context

The putative gene encoding the CAM-specific PEPC in *Portulaca* belongs to the *ppc-1E1c* gene lineage (Fig. 3). This gene lineage is characterized by increased rates of amino acid substitutions in other CAM taxa, such as cacti. This suggests that members of this *ppc-1E1c* gene lineage may have been already involved in some type of CAM metabolism before the divergence of *Portulaca* and cacti. On the other hand, the putative C₄-specific genes of *Portulaca* belong to the *ppc-1E1a* gene lineage, which is duplicated in these taxa. One of the duplicates was likely co-opted for C₄ photosynthesis after the gene duplication. Other members of the *ppc-1E1a* gene lineage, including the second duplicate of *Portulaca*, underwent mutations that generated amino acid substitutions at the same rate as genes from C₃ species (Fig. 3). Codon models confirmed that adaptive non-synonymous mutations did not occur on these genes, but were restricted to some members of the *ppc-1E1a'* duplicate, which is specific to *Portulaca*. The evolution of C₄-specific genes in *Portulaca* likely co-opted a non-CCM gene through numerous changes in the coding sequences. Therefore, the distribution of high rates of non-synonymous substitutions indicates that the evolution of C₄-specific PEPC occurred after the divergence of *Portulaca* from other Portulacineae while the CAM-specific properties of the gene used by *Portulaca* were inherited from the common ancestor of *Portulaca* and the cacti.

Because *Portulaca* species are nested within a predominantly CAM lineage (Guralnick and Jackson, 2001; Nyffeler *et al.*, 2008), it has been previously hypothesized that the C₄ pathway of these taxa evolved from an ancestral CAM type (Sage, 2002). This hypothesis is corroborated by the evolutionary history of PEPC genes, with the CAM-specific gene of *Portulaca* being similar to CAM forms of other species, such as cacti (Fig. 3), while the C₄-specific PEPC has been recruited

from non-photosynthetic forms. For the other enzymes of the CAM and C₄ pathways, *Portulaca* uses the same genes in both conditions (Supplementary Table S6, available at *JXB* online). This indicates that, for many enzymes of the CCM, the evolution of one CCM from the other does not require the co-option of new genes. However, since the timing of activity differs between the CCMs, modifications in the regulation of the genes are probably still required. For many of these genes, this may be possible because they are involved with both the C₃ pathway and the decarboxylation phase of the C₄ pathway that operates during the day in both the CAM and C₄ pathways. In the case of PEPC, however, co-option of the CAM-specific gene into the C₄ cycle might have been hampered by the distinct regulatory cascades controlling the transcription and translation of the CAM form at night and the C₄ form during the day (Jiao and Chollet, 1991; Nimmo, 2003), leading to the recruitment of a distinct gene (namely *ppc-1E1a'*).

C₄ evolution within Portulaca

Portulaca species do not form a homogeneous C₄ group, but include a C₃-C₄ species and several C₄ clades that differ in their C₄-associated anatomical types and decarboxylating enzymes used for the C₄ cycle (Voznesenskaya *et al.*, 2010; Ocampo *et al.*, 2013). In phylogenetic trees of *Portulaca* species, the C₃-C₄ taxon is nested within otherwise C₄ lineages (Ocampo and Columbus, 2012), which might be interpreted as evidence for a C₄ to C₃-C₄ reversion (Ocampo *et al.*, 2013). However, evolutionary transitions between photosynthetic types are difficult to reconstruct based on species relationships, and C₄-related phenotypic and genetic variation can help differentiate alternative scenarios (Christin *et al.*, 2010; Hancock and Edwards, 2014). In the case of *Portulaca*, the PEPC gene of the C₃-C₄ *P. cryptopetala* is nested within those of different C₄ clades (Fig. 4). If PEPC had been optimized once for a C₄ function at the base of *Portulaca*, this would have occurred through adaptive evolution on the branch sustaining the whole clade. Such a scenario is ruled out, however, by modelling of codon transitions, which strongly favour a model with adaptive evolution restricted to the branches at the base of each of the three C₄ clades (Fig. 4). This shows that the putative C₄-specific PEPC of the three C₄ clades included in this study underwent adaptive amino acid changes after their divergence, and after their separation from the lineage of *P. cryptopetala*. For instance, the Ser780 is restricted to genes from the Oleracea clade, while orthologous genes from members of the Pilosa clade underwent other amino acid substitutions that are shared with C₄ monocots (e.g. A531P, S761A; Christin *et al.*, 2007). These results show that the optimization of PEPC for a function in C₄ photosynthesis occurred independently in each C₄ clade, and refutes a C₄ to C₃-C₄ reversal in *P. cryptopetala*.

In addition to independent optimizations of PEPC genes for C₄ photosynthesis, variation exists in the C₄-associated anatomy and biochemistry among C₄ clades of *Portulaca* (Voznesenskaya *et al.*, 2010; Ocampo *et al.*, 2013). Based on these observations and our results, the most likely scenario is the addition of a C₃-C₄ suite of traits over an ancestral

CAM-like type in the common ancestor of *Portulaca*. This C₃–C₄ type might have been co-opted several times independently for the evolution of a more efficient C₄ trait, as suggested for Molluginaceae (Christin *et al.*, 2011). A gradual increase of PEPC activity during the day might then have occurred concomitantly with the development of a more C₄-like anatomy, characterized by a high bundle sheath to mesophyll ratio. One way to achieve this state is through high vein densities. Some members of *Portulaca* belong to a handful of lineages in the Portulacineae to have evolved high vein densities via the rearrangement of leaf vasculature into a three-dimensional configuration (Voznesenskaya *et al.*, 2010; Ocampo *et al.*, 2013; Ogburn and Edwards, 2013). While most of these vein rearrangements were associated with large increases in succulence, in *Portulaca* it may have allowed the acquisition of an optimized C₄ CCM.

Conclusions

Caryophyllales is a hotspot of photosynthetic transitions, with at least 23 C₄ and multiple CAM origins. Of three PEPC gene lineages present in eudicots (*ppc-1E1*, *ppc-1E2*, and *ppc-2*; Fig. 1), only *ppc-1E1* was recurrently recruited into the C₄ pathway, suggesting that this gene lineage was more suitable for a C₄ function (Christin *et al.*, 2013a). The evidence provided here also supports recruitment of the same gene lineage into CAM metabolism, which suggests that the same capacitated genes present in the common C₃ ancestor were co-opted by the numerous CCM origins of Caryophyllales. The evolvability of one CCM compared to the other might depend on the ecology and leaf anatomy of the C₃ ancestor of each lineage (Sage, 2002; Edwards and Ogburn, 2012; Edwards and Donoghue, 2013). However, in some cases, evolutionary bridges between the two photosynthetic types exist, as illustrated by *Portulaca*. This shows that while ancestral conditions could influence the evolutionary trajectories of the descendants, the determinism is not perfect and one photosynthetic type can be co-opted to evolve the other.

Supplementary material

Supplementary data are available at *JXB* online.

Figure S1. Phylogenetic relationships among *ppc-1* genes. This phylogenetic tree was obtained through Bayesian inference on nucleotide sequences. Names of taxonomic groups and gene lineages are indicated on the right. Branches in lineages presenting a Ser780 are highlighted in red. Bayesian support values are indicated near branches. Asterisks indicate putative pseudogenes with one or several stop codons in the coding sequence. Black circles indicate sequences that were isolated from cacti cDNA. (A) Complete phylogenetic tree; (B) *ppc-1E2* of Caryophyllales; (C, D) *ppc-1E1* of Caryophyllales.

Figure S2. Phylogenetic relationships among *ppc-2* genes. This phylogenetic tree was obtained through Bayesian inference on nucleotide sequences. Names of taxonomic groups are indicated on the right. Bayesian support values are indicated near branches.

Figure S3. Amino acid changes on genes encoding PEPC. The topology was inferred on nucleotide sequences, but branch lengths were estimated based on amino acid sequences. The branch lengths inferred on nucleotide sequences, together with all species names and support values, are available in Figs S1 and S2. The names of the main groups are indicated on the right. Groups of genes containing a Ser780 are highlighted by red branches. The asterisk highlights a pseudogene with multiple stop codons.

Table S1. Sample of Caryophyllales (excluding Portulacineae) used for analyses of PEPC-encoding genes.

Table S2. List of Portulacineae genes encoding PEPC analysed.

Table S3. Additional primers used for PCR amplification of Caryophyllales genes encoding PEPC.

Table S4. Water treatment of *Portulaca oleracea* plants.

Table S5. Sequencing and mapping statistics.

Table S6. Expression levels in rpm of C₄-related genes in day and night samples of *Portulaca oleracea* plants grown in different conditions.

Acknowledgements

This work was funded by Marie Curie International Outgoing Fellowship 252569 to PAC and a National Science Foundation grant (DEB-1026611) and Brown University Salomon Faculty Research Award to EJE. This research was conducted using computational resources at the Center for Computation and Visualization, Brown University. The 1000 Plants (1KP) initiative, led by GKSW, is funded by the Alberta Ministry of Enterprise and Advanced Education, Alberta Innovates Technology Futures (AITF) Innovates Centre of Research Excellence (iCORE), Musea Ventures, and BGI-Shenzhen. The authors thank Professor Gerry Edwards and Professor Neal Stewart for providing seeds of several *Portulaca* species used to generate transcriptome data.

References

- Arakaki M, Christin PA, Nyffeler R, Lendel A, Eggli U, Ogburn RM, Spriggs E, Moore MJ, Edwards EJ. 2011. Contemporaneous and recent radiations of the world's major succulent plant lineages. *Proceedings of the National Academy of Sciences USA* **108**, 8379–8384.
- Aubry S, Brown NJ, Hibberd JM. 2011. The role of proteins in C₃ plants prior to their recruitment into the C₄ pathway. *Journal of Experimental Botany* **62**, 3049–3059.
- Bauwe H, Chollet R. 1986. Kinetic properties of phosphoenolpyruvate carboxylase from C₃, C₄, and C₃–C₄ intermediate species of *Flaveria* (Asteraceae). *Plant Physiology* **82**, 695–699.
- Besnard G, Muasya AM, Russier F, Roalson EH, Salamin N, Christin PA. 2009. Phylogenomics of C₄ photosynthesis in sedges (Cyperaceae): multiple appearances and genetic convergence. *Molecular Biology and Evolution* **26**, 1909–1919.
- Bläsing OE, Westhoff P, Svensson P. 2000. Evolution of C₄ phosphoenolpyruvate carboxylase in *Flaveria*, a conserved serine residue in the carboxyl-terminal part of the enzyme is a major determinant of C₄-specific characteristics. *Journal of Biological Chemistry* **275**, 27917–27923.
- Borland AM, Taybi T. 2004. Synchronization of metabolic processes in plants with Crassulacean acid metabolism. *Journal of Experimental Botany* **55**, 1255–1265.
- Bräutigam A, Kajala K, Wullenweber J *et al.* 2011. An mRNA blueprint for C₄ photosynthesis derived from comparative transcriptomics of closely related C₃ and C₄ species. *Plant Physiology* **155**, 142–156.
- Brockington SF, Alexandre R, Ramdial J, Moore MJ, Crawley S, Dhingra A, Kilu K, Soltis DE, Soltis PS. 2009. Phylogeny of the Caryophyllales sensu lato: revisiting hypotheses on pollination biology and

perianth differentiation in the core Caryophyllales. *International Journal of Plant Sciences* **170**, 627–643.

Christin PA, Besnard G. 2009. Two independent C_4 origins in Aristidoideae (Poaceae) revealed by the recruitment of distinct phosphoenolpyruvate carboxylase genes. *American Journal of Botany* **96**, 2234–2239.

Christin PA, Besnard G, Edwards EJ, Salamin N. 2012. Effect of genetic convergence on phylogenetic inference. *Molecular Phylogenetics and Evolution* **62**, 921–927.

Christin PA, Boxall SF, Gregory R, Edwards EJ, Hartwell J, Osborne CP. 2013a. Parallel recruitment of multiple genes into C_4 photosynthesis. *Genome Biology and Evolution* **5**, 2174–2187.

Christin PA, Freckleton RP, Osborne CP. 2010. Can phylogenetics identify C_4 origins and reversals? *Trends in Ecology and Evolution* **25**, 403–409.

Christin PA, Osborne CP. 2013. The recurrent assembly of C_4 photosynthesis, an evolutionary tale. *Photosynthesis Research* **117**, 163–175.

Christin PA, Osborne CP, Chatelet DS, Columbus JT, Besnard G, Hodkinson TR, Garrison LM, Vorontsova MS, Edwards EJ. 2013b. Anatomical enablers and the evolution of C_4 photosynthesis in grasses. *Proceedings of the National Academy of Sciences USA* **110**, 1381–1386.

Christin PA, Sage TL, Edwards EJ, Ogburn RM, Khoshravesh R, Sage RF. 2011. Complex evolutionary transitions and the significance of C_3 – C_4 intermediate forms of photosynthesis in Molluginaceae. *Evolution* **65**, 643–660.

Christin PA, Salamin N, Savolainen V, Duvall MR, Besnard G. 2007. C_4 photosynthesis evolved in grasses via parallel adaptive genetic changes. *Current Biology* **17**, 1241–1247.

Crayn DM, Winter K, Smith JAC. 2004. Multiple origins of crassulacean acid metabolism and the epiphytic habit in the Neotropical family Bromeliaceae. *Proceedings of the National Academy of Sciences USA* **101**, 3703–3708.

Dong LY, Masuda T, Kawamura T, Hata S, Izui K. 1998. Cloning, expression, and characterization of a root-form phosphoenolpyruvate carboxylase from *Zea mays*: comparison with the C_4 -form enzyme. *Plant and Cell Physiology* **39**, 865–873.

Dunn CW, Howison M, Zapata F. 2013. Agalma: an automated phylogenomics workflow. *BMC Bioinformatics* **14**, 300.

Edgar RC. 2004. MUSCLE: multiple sequence alignment with high accuracy and high throughput. *Nucleic Acids Research* **32**, 1792–1797.

Edwards EJ, Donoghue MJ. 2013. Is it easy to move and easy to evolve? Evolutionary accessibility and adaptation. *Journal of Experimental Botany* **64**, 4047–4052.

Edwards EJ, Ogburn RM. 2012. Angiosperm responses to a low- CO_2 world: CAM and C_4 photosynthesis as parallel evolutionary trajectories. *International Journal of Plant Sciences* **173**, 724–733.

Engelmann S, Bläsing OE, Westhoff P, Svensson P. 2002. Serine 774 and amino acids 296 to 437 comprise the major C_4 determinants of the C_4 phosphoenolpyruvate carboxylase of *Flaveria trinervia*. *FEBS Letters* **524**, 11–14.

Finnegan PM, Suzuki S, Ludwig M, Burnell JN. 1999. Phosphoenolpyruvate carboxylase in the C_4 monocot *Urochloa panicoides* is encoded by four differentially expressed genes. *Plant Physiology* **120**, 1033–1041.

Gehrig H, Heute V, Kluge M. 2001. New partial sequences of phosphoenolpyruvate carboxylase as molecular phylogenetic markers. *Molecular Phylogenetics and Evolution* **20**, 262–274.

Goodstein DM, Shu S, Howson R *et al.* 2012. Phytozome: a comparative platform for green plant genomics. *Nucleic Acids Research* **40**, D1178–D1186.

Gowik U, Bräutigam A, Weber KL, Weber APM, Westhoff P. 2011. Evolution of C_4 photosynthesis in the genus *Flaveria*: how many and which genes does it take to make C_4 ? *Plant Cell* **23**, 2087–2105.

Gowik U, Engelmann S, Bläsing OE, Raghavendra AS, Westhoff P. 2006. Evolution of C_4 phosphoenolpyruvate carboxylase in the genus *Alternanthera*: gene families and the enzymatic characteristics of the C_4 isozyme and its orthologues in C_3 and C_3/C_4 *Alternantheras*. *Planta* **223**, 359–368.

Gowik U, Westhoff P. 2011. C_4 -phosphoenolpyruvate carboxylase. In: Raghavendra AS, Sage RF, eds. *C_4 photosynthesis and related CO_2 concentrating mechanisms*. *Advances in Photosynthesis and Respiration*, Vol. **32**. Dordrecht: Springer, 257–275.

Grabherr MG, Haas BJ, Yassour M *et al.* 2011. Full-length transcriptome assembly from RNA-seq data without a reference genome. *Nature Biotechnology* **29**, 644–652.

Griffiths H, Weller G, Toy LMF, Dennis RJ. 2013. You're so vein: bundle sheath physiology, phylogeny and evolution in C_3 and C_4 plants. *Plant Cell and Environment* **36**, 249–261.

Guindon S, Gascuel O. 2003. A simple, fast, and accurate algorithm to estimate large phylogenies by maximum likelihood. *Systematic Biology* **52**, 696–704.

Guralnick LJ, Cline A, Smith M, Sage RF. 2008. Evolutionary physiology: the extent of C_4 and CAM photosynthesis in the genera *Anacampseros* and *Grahamia* of the Portulacaceae. *Journal of Experimental Botany* **59**, 1735–1742.

Guralnick LJ, Edwards G, Ku MSB, Hockema B, Franceschi VR. 2002. Photosynthesis and anatomical characteristics in the C_4 -crassulacean acid metabolism-cycling plant *Portulaca grandiflora*. *Functional Plant Biology* **29**, 763–773.

Guralnick LJ, Jackson M. 2001. The occurrence and phylogenetics of CAM in the Portulacaceae. *International Journal of Plant Sciences* **162**, 257–262.

Guralnick LJ, Ting IP. 1987. Physiological changes in *Portulacaria afra* (L.) Jacq. during a summer drought and rewetting. *Plant Physiology* **85**, 481–486.

Hancock L, Edwards EJ. 2014. Phylogeny and the inference of evolutionary trajectories. *Journal of Experimental Botany* **65**, 3491–3498.

Hatch MD. 1987. C_4 photosynthesis: a unique blend of modified biochemistry, anatomy and ultrastructure. *Biochimica et Biophysica Acta* **895**, 81–106.

Hattersley PW. 1984. Characterization of C_4 type leaf anatomy in grasses (Poaceae), mesophyll-bundle sheath area ratios. *Annals of Botany* **53**, 163–179.

Jiao JA, Chollet R. 1991. Posttranslational regulation of phosphoenolpyruvate carboxylase in C_4 and Crassulacean Acid Metabolism plants. *Plant Physiology* **95**, 981–985.

Johnson MTJ, Carpenter EJ, Tian Z *et al.* 2012. Evaluating methods for isolating total RNA and predicting the success of sequencing phylogenetically diverse plant transcriptomes. *PLOS ONE* **7**, e50226.

Kadereit G, Ackerly D, Pirie MD. 2012. A broader model for C_4 photosynthesis evolution in plants inferred from the goosefoot family (Chenopodiaceae s.s.). *Proceedings of the Royal Society of London Series B* **279**, 3304–3311.

Kadereit G, Borsch T, Weising K, Freitag H. 2003. Phylogeny of Amaranthaceae and Chenopodiaceae and the evolution of C_4 photosynthesis. *International Journal of Plant Sciences* **164**, 959–986.

Keeley JE, Rundel PW. 2003. Evolution of CAM and C_4 carbon-concentrating mechanisms. *International Journal of Plant Sciences* **164**, S55–S77.

Koch K, Kennedy RA. 1980. Characteristics of crassulacean acid metabolism in the succulent C_4 dicot, *Portulaca oleracea* L. *Plant Physiology* **65**, 193–197.

Koch K, Kennedy RA. 1982. Crassulacean acid metabolism in the succulent C_4 dicot, *Portulaca oleracea* L. under natural environmental conditions. *Plant Physiology* **69**, 757–761.

Kraybill AA, Martin CE. 1996. Crassulacean acid metabolism in three species of the C_4 genus *Portulaca*. *International Journal of Plant Sciences* **157**, 103–109.

Langmead B, Salzberg S. 2012. Fast gapped-read alignment with Bowtie 2. *Nature Methods* **9**, 357–359.

Lara MV, Chuong SDX, Akhani H, Andreo CS, Edwards GE. 2006. Species having C_4 single-cell-type photosynthesis in the Chenopodiaceae family evolved a photosynthetic phosphoenolpyruvate carboxylase like that of Kranz-type C_4 species. *Plant Physiology* **142**, 673–684.

Lara MV, Disante KB, Podesta FE, Andreo CS, Drincovich MF. 2003. Induction of a Crassulacean acid like metabolism in the C_4 succulent plant, *Portulaca oleracea* L.: physiological and morphological changes

- are accompanied by specific modifications in phosphoenolpyruvate carboxylase. *Photosynthesis Research* **77**, 241–254.
- Lara MV, Drincovich MF, Andrea CS.** 2004. Induction of a crassulacean acid-like metabolism in the C₄ succulent plant, *Portulaca oleracea* L.: study of enzymes involved in carbon fixation and carbohydrate metabolism. *Plant Cell and Environment* **45**, 618–626.
- Lepiniec L, Vidal J, Chollet R, Gadal P, Cretin C.** 1994. Phosphoenolpyruvate carboxylase: structure, function, regulation and evolution. *Plant Science* **99**, 111–124.
- Ludwig M.** 2011. The molecular evolution of β-carbonic anhydrase in *Flaveria*. *Journal of Experimental Botany* **62**, 3071–3081.
- Mazen AMA.** 1996. Changes in levels of phosphoenolpyruvate carboxylase with induction of Crassulacean acid metabolism (CAM)-like behavior in the C₄ plant *Portulaca oleracea*. *Physiologia Plantarum* **98**, 111–116.
- Mazen AMA.** 2000. Changes in properties of phosphoenolpyruvate carboxylase with induction of Crassulacean Acid Metabolism (CAM) in the C₄ plant *Portulaca oleracea*. *Photosynthetica* **38**, 385–391.
- Monson RK.** 2003. Gene duplication, neofunctionalization, and the evolution of C₄ photosynthesis. *International Journal of Plant Sciences* **164**, S43–S54.
- Nelson EA, Sage TL, Sage RF.** 2005. Functional leaf anatomy of plants with crassulacean acid metabolism. *Functional Plant Biology* **32**, 409–419.
- Nimmo HG.** 2003. How to tell the time: the regulation of phosphoenolpyruvate carboxylase in Crassulacean acid metabolism (CAM) plants. *Biochemical Society Transactions* **31**, 728–730.
- Nyffeler R, Eggli U.** 2010. Disintegrating Portulacaceae: a new familial classification of the suborder Portulacineae (Caryophyllales) based on molecular and morphological data. *Taxon* **59**, 227–240.
- Nyffeler R, Eggli U, Ogburn M, Edwards EJ.** 2008. Variations on a theme: repeated evolution of succulent life forms in the Portulacineae (Caryophyllales). *Haseiltonia* **14**, 26–36.
- Ocampo G, Columbus JT.** 2010. Molecular phylogenetics of suborder Cactineae (Caryophyllales), including insights into photosynthetic diversification and historical biogeography. *American Journal of Botany* **97**, 1827–1847.
- Ocampo G, Columbus JT.** 2012. Molecular phylogenetics, historical biogeography, and chromosome number evolution of *Portulaca* (Portulacaceae). *Molecular Phylogenetics and Evolution* **63**, 97–112.
- Ocampo G, Koteyeva NK, Voznesenskaya EV, Edwards GE, Sage TL, Sage RF, Columbus JT.** 2013. Evolution of leaf anatomy and photosynthetic pathways in Portulacaceae. *American Journal of Botany* **100**, 2388–2402.
- Ogburn RM, Edwards EJ.** 2013. Repeated origin of three-dimensional leaf venation releases constraints on the evolution of succulence in plants. *Current Biology* **23**, 722–726.
- Osmond CB.** 1978. Crassulacean acid metabolism. A curiosity in context. *Annual Reviews of Plant Physiology* **29**, 379–414.
- Rambaut A, Drummond AJ.** 2007. Tracer v1.4, available at <http://beadit.bio.ed.ac.uk/Tracer>.
- Rao SK, Magnin NC, Reiskind JB, Bowes G.** 2002. Photosynthetic and other phosphoenolpyruvate carboxylase isoforms in the single-cell, facultative C₄ system of *Hydrilla verticillata*. *Plant Physiology* **130**, 876–886.
- Rao SK, Reiskind JB, Bowes G.** 2008. Kinetic analyses of recombinant isoforms of phosphoenolpyruvate carboxylase from *Hydrilla verticillata* leaves and the impact of substituting a C₄-signature serine. *Plant Science* **174**, 475–483.
- Raven JA, Cockell CS, De La Rocha CS.** 2008. The evolution of inorganic carbon concentrating mechanisms in photosynthesis. *Philosophical Transactions of the Royal Society of London Series B* **363**, 2641–2650.
- Rickers J, Cushman JC, Michalowski CB, Schmitt JM, Bohnert HJ.** 1989. Expression of the CAM-form of phospho(enol)pyruvate carboxylase and nucleotide sequence of a full length cDNA of *Mesembryanthemum crystallinum*. *Molecular and General Genetics* **215**, 447–454.
- Ronquist F, Huelsenbeck JP.** 2003. MrBayes 3: Bayesian phylogenetic inference under mixed models. *Bioinformatics* **19**, 1572–1574.
- Sage RF.** 2001. Environmental and evolutionary preconditions for the origin and diversification of the C₄ photosynthetic syndrome. *Plant Biology* **3**, 202–213.
- Sage RF.** 2002. Are crassulacean acid metabolism and C₄ photosynthesis incompatible? *Functional Plant Biology* **29**, 775–785.
- Sage RF, Christin PA, Edwards EJ.** 2011. The C₄ plant lineages of planet Earth. *Journal of Experimental Botany* **62**, 3155–3169.
- Sage RF, Sage TL, Kocacinar F.** 2012. Photorespiration and the evolution of C₄ photosynthesis. *Annual Reviews of Plant Biology* **63**, 19–47.
- Silvera K, Santiago LS, Winter K.** 2005. Distribution of crassulacean acid metabolism in orchids of Panama: evidence of selection for weak and strong modes. *Functional Plant Biology* **32**, 397–407.
- Soltis DE, Smith SA, Cellinese N et al.** 2011. Angiosperm phylogeny: 17 genes, 640 taxa. *American Journal of Botany* **98**, 704–730.
- Svensson P, Bläsing OE, Westhoff P.** 2003. Evolution of C₄ phosphoenolpyruvate carboxylase. *Archives of Biochemistry and Biophysics* **414**, 180–188.
- Tausta SL, Miller Coyle H, Rothermel B, Stifel V, Nelson T.** 2002. Maize C₄ and non-C₄ NADP-dependent malic enzymes are encoded by distinct genes derived from a plastid-localized ancestor. *Plant Molecular Biology* **50**, 635–652.
- Thompson JD, Higgins DJ, Gibson TJ.** 1994. ClustalW: improving the sensitivity of progressive multiple sequence alignment through sequence weighting, position specific gap penalties and matrix choice. *Nucleic Acids Research* **22**, 4673–4680.
- Voznesenskaya EV, Koteyava NK, Edwards GE, Ocampo G.** 2010. Revealing diversity in structural and biochemical forms of C₄ photosynthesis in genus *Portulaca* L. (Portulacaceae). *Journal of Experimental Botany* **61**, 3647–3662.
- Yang ZH.** 2007. PAML4: phylogenetic analysis by maximum likelihood. *Molecular Biology and Evolution* **24**, 1586–1591.
- Yang ZH, Nielsen R.** 2002. Codon-substitutions models for detecting molecular adaptation at individual sites along specific lineages. *Molecular Biology and Evolution* **19**, 908–917.