



OPEN

Generation of muscular dystrophy model rats with a CRISPR/Cas system

SUBJECT AREAS:
GENETIC ENGINEERING
DISEASE MODELKatsuyuki Nakamura¹, Wataru Fujii², Masaya Tsuboi³, Jun Tanihata⁴, Naomi Teramoto¹, Shiho Takeuchi¹,
Kunihiko Naito², Keitaro Yamanouchi¹ & Masugi Nishihara¹Received
20 February 2014Accepted
23 June 2014Published
9 July 2014Correspondence and
requests for materials
should be addressed to
K.Y. (akeita@mail.ecc.
u-tokyo.ac.jp)

¹Department of Veterinary Physiology, Graduate School of Agricultural and Life Sciences, The University of Tokyo, 1-1-1 Yayoi, Bunkyo-ku, Tokyo 113-8657, Japan, ²Department of Animal Resource Sciences, Graduate School of Agricultural and Life Sciences, The University of Tokyo, 1-1-1 Yayoi, Bunkyo-ku, Tokyo 113-8657, Japan, ³Department of Veterinary Pathology, Graduate School of Agricultural and Life Sciences, The University of Tokyo, 1-1-1 Yayoi, Bunkyo-ku, Tokyo 113-8657, Japan, ⁴Department of Molecular Therapy, National Institute of Neuroscience, National Center of Neurology and Psychiatry, 4-1-1 Ogawa-Higashi, Kodaira, Tokyo 187-8502, Japan.

Duchenne muscular dystrophy (DMD) is an X-linked lethal muscle disorder caused by mutations in the *Dmd* gene encoding Dystrophin^{1,2}. DMD model animals, such as mdx mice and canine X-linked muscular dystrophy dogs, have been widely utilized in the development of a treatment for DMD³. Here, we demonstrate the generation of *Dmd*-mutated rats using a clustered interspaced short palindromic repeats (CRISPR)/Cas system, an RNA-based genome engineering technique that is also adaptive to rats. We simultaneously targeted two exons in the rat *Dmd* gene, which resulted in the absence of Dystrophin expression in the F0 generation. *Dmd*-mutated rats exhibited a decline in muscle strength, and the emergence of degenerative/regenerative phenotypes in the skeletal muscle, heart, and diaphragm. These mutations were heritable by the next generation, and F1 male rats exhibited similar phenotypes in their skeletal muscles. These model rats should prove to be useful for developing therapeutic methods to treat DMD.

The *Dmd* gene encoding Dystrophin plays an important role in the stabilization of sarcolemma. Mutations in this gene are responsible for the development of Duchenne muscular dystrophy (DMD), an X-linked degenerative muscle disorder^{1,2}. In the absence of Dystrophin, muscle strength declines as the patient ages, which is accompanied by progressive degeneration and regeneration of the skeletal muscles and the replacement of myofibers by fat and connective tissue⁴. The lack of Dystrophin affects the cardiac muscle and diaphragm, eventually resulting in death. Dystrophin is also expressed in the central nervous system, and, consequently, cognitive deficits are also associated with DMD^{5,6}. To explore therapeutic options for the treatment of DMD, several types of DMD model animals have been utilized, including mdx mice and canine X-linked muscular dystrophy (cxmd) dogs³. Use of these animals has led to the development of various types of therapeutic methods, including several that are currently in clinical trials^{7,8}; however, to date, no effective treatment to completely cure this disease has been established. The different DMD model animals have their advantages and disadvantages^{9,10}. Although mdx mice are easy to maintain and breed, their degenerative phenotypes in the skeletal muscle are mild compared to those of human DMD. Conversely, cxmd dogs reflect the pathological severity of human DMD, with early onset muscle weakness, lethal respiratory distress, and cardiomyopathy; unfortunately, phenotypes can vary between individuals, and considerable labor is required to maintain and breed the dogs.

Laboratory rats, with a body size between those of mice and dogs, have historically been considered a useful species for the development of new medicines to treat human disease, especially for evaluating pharmacological effects and toxicity¹¹, because their larger body size facilitates adequate blood collection and more accurate analyses than are possible with mice models¹². Rats are also useful for behavioral studies because they can learn more complex procedures than can mice¹². Targeted modification of the rat genome had been a long-standing challenge; however, knockout rats have been successfully generated using zinc finger nuclease (ZFN) as a gene-targeting technique¹³. Another artificial nuclease, transcription activator-like effector nuclease (TALEN), has also been successfully applied to rats¹⁴. In addition to these genomic engineering methods, a bacterially acquired immunity system known as clustered regularly interspaced short palindromic repeats (CRISPR) and CRISPR-associated nuclease (Cas)9 has been identified as an RNA-based genomic targeting tool for mammalian cells^{15,16}. In this system, a short guide RNA (gRNA), containing a sequence of approximately 20 nt capable of recognizing the target site followed by a protospacer adjacent motif (PAM), recruits Cas9 to the genome target. This complex

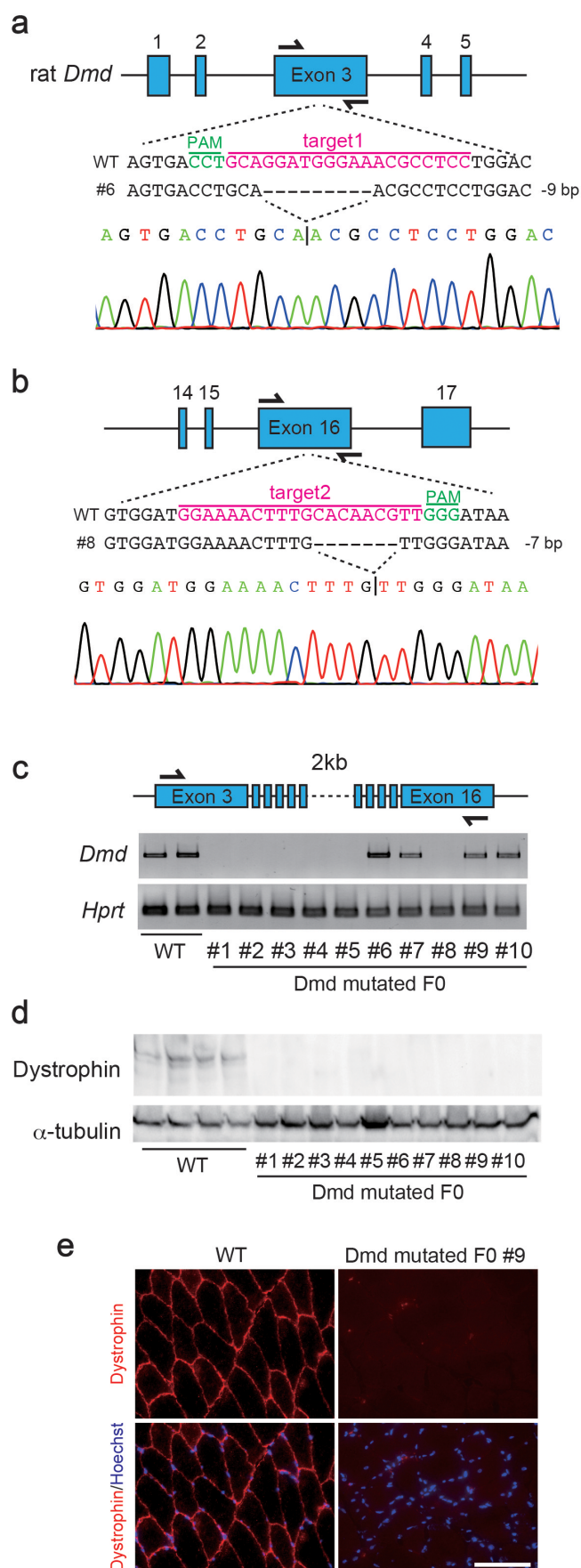


Figure 1 | Generation of *Dmd*-mutated rats via the CRISPR/Cas9 system. Scheme for targeting the rat *Dmd* gene at exons 3 (a) and 16 (b) using

CRISPR/Cas9. The gRNA sequences (magenta) and protospacer adjacent motif (PAM; green) are labeled. Representative sequences and their waveform data are presented below. (c) RT-PCR for *Dmd* and *Hprt* in wild type (WT) and *Dmd*-mutated F0 rats. These images were cropped and full-length gels are shown in Supplementary Figure 8a and b. (d) Immunoblotting for Dystrophin and α -tubulin in tibialis anterior (TA) muscles of WT and *Dmd*-mutated F0 rats. These images were cropped and full-length blots are shown in Supplementary Figure 8c and d. (e) Immunostaining for *Dmd* in WT and *Dmd*-mutated F0 rats. Scale bar = 100 μ m.

then generates a double-strand break followed by non-homologous end-joining, which induces an insertion or deletion in the target site. Compared to ZFN and TALEN, the CRISPR/Cas system is a convenient and low-cost method requiring only a short, designed gRNA, which makes it possible to perform multi-targeting by simultaneously introducing multiple gRNAs¹⁷. This improves the success rate in the silencing of target gene expression. The CRISPR/Cas system is also adaptive to rats^{18,19}. In addition, a highly efficient method to generate knockout animals using the CRISPR/Cas system was established²⁰, which made it possible to produce large-scale deletions between two target sites and transmit the mutations to the next generation. Based on these previous results and methods, we were interested in determining whether rats lacking Dystrophin could function as model animals exhibiting the advantages of both mdx mice and cxmd dogs, and whether they could also be utilized for ethological analysis. To evaluate this, we employed the CRISPR/Cas system to generate *Dmd*-mutated rats.

To introduce mutations in the rat *Dmd* gene, located in the X chromosome, and to increase the success rate, we predicted the sequence of exons based on information of the mouse *Dmd* gene, designed two gRNAs targeting exon 3 (designated as target1) and exon 16 (designated as target2) of the rat *Dmd* gene, and simultaneously co-injected these two gRNAs with *Cas9* mRNA into zygotes (Fig. 1a, b). Nine of 10 F0 male rats subsequently exhibited a mutation in at least one of the two target loci (Supplementary Table 1 and Supplementary Fig. 1). Several studies have reported that the CRISPR/Cas9 system may produce off-target effects^{20–22}. We observed that four F0 male rats had indels in one off-target site (Supplementary Table 2). The mutations identified in the tail genome DNA were the same as those observed in the tibialis anterior (TA) muscles (Supplementary Fig. 2a), and some F0 rats exhibited a mosaic pattern in their mutations (Supplementary Figs. 1, 2b, and 2c), with a more than 300-kb large scale-deleted allele, as previously reported in mice²⁰ (Supplementary Fig. 3). In addition, *Dmd* mRNA expression was still evident in some of the *Dmd*-mutated F0 male rats (Fig. 1c). While some variation was observed in the mutation patterns of F0 rats, no Dystrophin protein expression was apparent in the immunoblotting or immunostaining analyses in any of the *Dmd*-mutated rats, including the one rat whose mutations could not be detected by PCR-based sequence analysis (Fig. 1d, e and Supplementary Fig. 4a). Immunoblotting and immunostaining with another antibody for Dystrophin indicated the presence of truncated Dystrophin protein in in-frame mutant rats, although its quantity was relatively low compared to that of wild type (WT) rats (Supplementary Fig. 5). These results demonstrated that, except for the in-frame mutant rats, most of the *Dmd*-mutated rats were indeed *Dmd* knockout rats lacking Dystrophin protein.

Next, we investigated whether *Dmd*-mutated F0 rats exhibited pathologies similar to other animal models such as mdx mice. *Dmd*-mutated F0 rats did not exhibit any differences in body weight compared to WT rats (Fig. 2a). However, we observed a slight increase in the weights of the heart and TA muscles, but not of the soleus (SOL) muscles in *Dmd*-mutated F0 rats (Fig. 2b–d), indicating that these tissues were affected by the lack of Dystrophin. The TA muscles of 13-week-old *Dmd*-mutated F0 rats exhibited degenera-

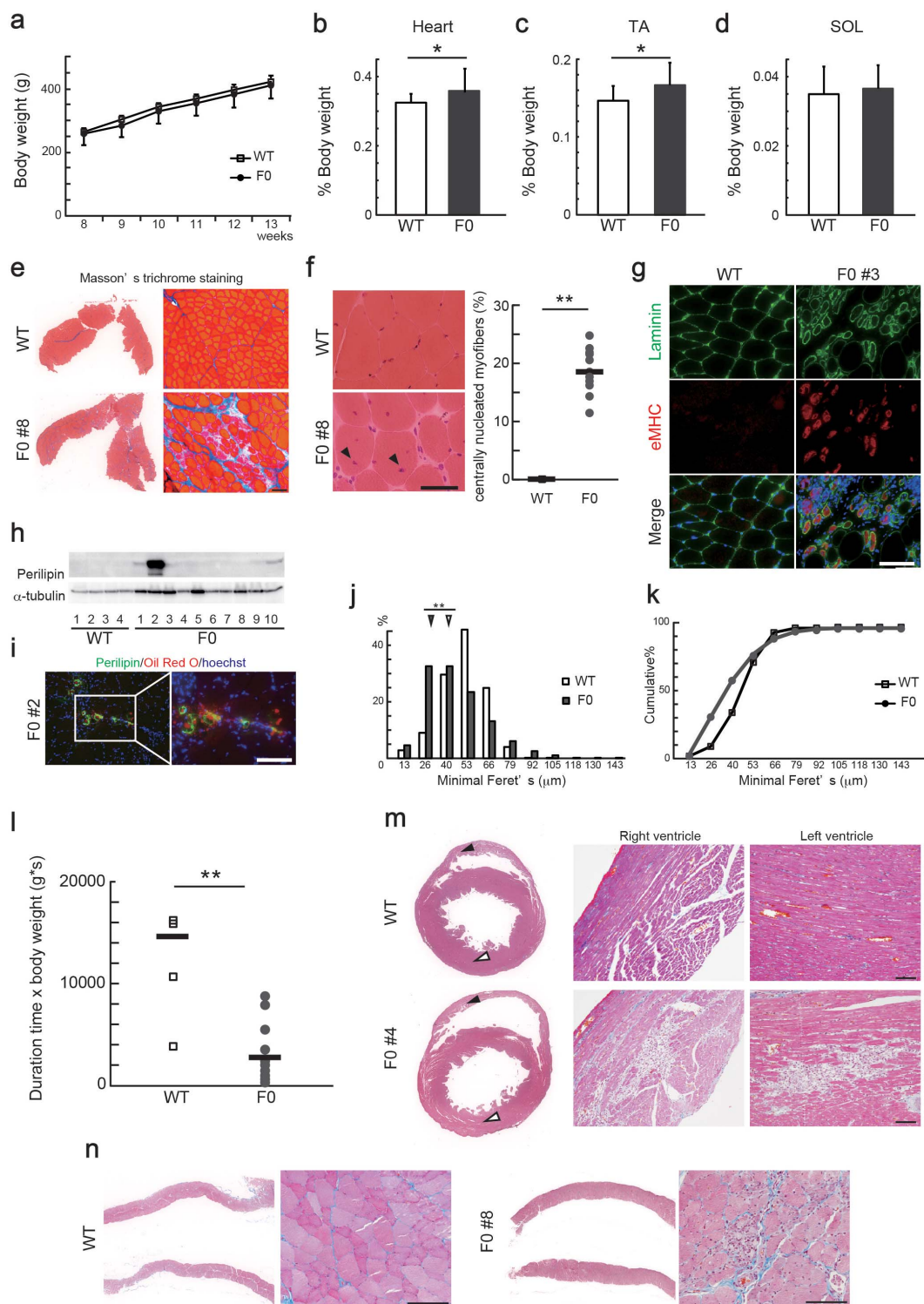


Figure 2 | Pathological analyses of *Dmd*-mutated F0 rats. (a) Body weight and weights of the (b) heart, (c) tibialis anterior (TA), and (d) soleus (SOL) muscles relative to body weight of *Dmd*-mutated F0 ($n = 10$) and age-matched wild type (WT) rats ($n = 4$). $*P < 0.05$. (e) Masson's trichrome staining of TA muscles in 13-week-old WT and *Dmd*-mutated F0 rats. Scale bar = 100 μm . (f) Hematoxylin & eosin (H&E) staining of TA muscles in 13-week-old WT and *Dmd*-mutated F0 rats. Scale bar = 50 μm . Myofibers with central nuclei were indicated with arrowheads and quantified in the right plots (WT; $n = 4$, *Dmd*-mutated F0; $n = 10$). Bars represent the mean value of each group. $**P < 0.01$. (g) Cross sections of TA muscles in 13-week-old WT and *Dmd*-mutated F0 rats stained with anti-laminin (green) and anti-embryonic myosin heavy chain (eMHC, red) antibody. Scale bar = 100 μm . (h) Immunoblotting for Perilipin and α -tubulin in TA muscles of WT and *Dmd*-mutated rats. Full-length blots are shown in Supplementary Figure 8e and f. (i) Cross sections of TA muscles in 13-week-old WT and *Dmd*-mutated F0 rats stained with anti-Perilipin antibody (green) and Oil Red O (red). Scale bar = 100 μm . Relative distributions (j) and cumulative plots (k) of myofiber size in TA muscles of 13-week-old WT and F0 rats (WT, 2448 fibers and F0, 6612 fibers). Arrowheads indicate median values. $**P < 0.01$. (l) Results of wire-hang test in WT ($n = 4$) and *Dmd*-mutated F0 ($n = 10$) rats. Bars represent the mean value of each group. $**P < 0.01$. Masson's trichrome stainings of (m) hearts and (n) diaphragms of 13-week-old WT and *Dmd*-mutated F0 rats. Scale bar = 100 μm . Black and white arrowheads indicate right and left ventricles, respectively. Scale bar = 100 μm .



tion of myofibers and increased fibrosis (Fig. 2e). All of the F0 rats exhibited muscle degeneration, although the extent of fibrosis varied between individuals (Supplementary Fig. 4b). Myofibers with central nuclei (Fig. 2f) and embryonic myosin heavy chain (eMHC)-positive regenerating myofibers were observed in all of the F0 rats (Fig. 2g and Supplementary Fig. 4c). During the progression of human DMD, myofibers are replaced by adipocytes⁴. Thus, we examined the presence of adipose infiltration in the F0 rats. The expression of Perilipin, an adipocyte marker, was elevated in some of the F0 rats (Fig. 2h). Immunostaining of Perilipin and Oil Red O staining revealed an increased presence of fat tissues in the intramuscular spaces of the TA muscles of *Dmd*-mutated F0 rats compared with WT rats (Fig. 2i); however, no myofibers were replaced by the adipocytes. We also observed differences in myofiber size (Fig. 2j, k), one of the typical phenotypes associated with muscular dystrophy²³. Furthermore, the wire-hang test revealed that muscle strength in the F0 rats was significantly reduced compared to that of WT rats (Fig. 2l). In the heart and diaphragm, the lack of Dystrophin caused some degenerative lesions coupled with invasion of inflammatory cells (Fig. 2m, n). Although not statistically significant, a comparison of WT and *Dmd*-mutated F0 male rats revealed that some *Dmd*-mutated F0 rats exhibited a tendency toward enlargement of the right ventricle (Supplementary Fig. 6). The degeneration phenotypes in the diaphragm of in-frame mutated F0 rat #6 seemed mild compared to the out-of-frame-mutated rats (data not shown). These results indicated that the absence of Dystrophin caused degeneration and regeneration of muscular tissues in rats.

To examine the inheritance pattern of mutations induced by the CRISPR/Cas9 system, we crossed F0 female rats harboring detectable mutations in the *Dmd* gene with WT male rats. Sequencing of the targeted loci of the resulting F1 male rat pups revealed two patterns of mutations in the target2 locus (Supplementary Fig. 7a), and one of these was the same insertion/deletion that was detected in the tail genome of F0 female rats. The F1 rats exhibited a significant decrease in body weight (Fig. 3a), possibly due to a disability of the F0 *Dmd*-mutated female rats during rearing. The F1 male rats exhibited a slight weight increase only in the TA muscles, but not in the heart and SOL muscles (Fig. 3b–d). Immunostaining for Dystrophin indicated reduced Dystrophin protein expression in all of the F1 male rats (Fig. 3e and Supplementary Fig. 7b, c). Degenerative lesions and regenerative fibers were also observed in both F0 and F1 rats (Fig. 3f, g). The creatine kinase activity, which is widely used as an index of muscular damage, was elevated in F1 rats compared to WT rats (Fig. 3h). The F1 rats exhibited decrease or lack of DGC, similar to DMD (Supplementary Fig. 7d). These data suggest that mutations generated by CRISPR/Cas9 can be transmitted to the next generation, causing deletion of *Dmd* and degenerative/regenerative changes in muscles.

Although we could not directly compare the *Dmd*-mutated rats and mdx mice, similarities were observed in the overall phenotypes, including degenerative and regenerative muscle fibers, and fibrosis and lesions in the heart and diaphragm with inflammatory cells²⁴.

Results of this study suggested two important differences between rats and mice. First, it is widely recognized that in mdx mice, the degeneration of muscle peaks at 4–8 weeks after birth, followed by gradual recovery. Conversely, no significant differences were observed in the extent of muscle degeneration between week 4 (Fig. 3 and Supplementary Fig. 7) and week 13 (Fig. 2 and Supplementary Fig. 4) in *Dmd*-mutated rats. Although further investigation is needed, our observations suggest that the pathological progression is more continuous in rats than in mice.

Second, the degenerative lesions in the hearts of *Dmd*-mutated rats appeared more severe than those in mice. In mdx mice, apparent degeneration of the cardiac muscle is not observed until after 7 months²⁵. Cardiomyopathy is a major cause of death in DMD²⁶. Therefore, *Dmd*-mutated rats may be useful as a DMD model, especially to evaluate cardiac pathology.

Dmd-mutated rats also exhibited increases in adipose tissue in muscles; however, the replacement of myofibers by fat tissue that is normally observed in advanced human DMD was not observed in these rats. Further investigation is needed to clarify whether age-associated phenotypes (e.g., muscle degeneration, fibrosis, or substitution of myofibers by adipocytes) develop as *Dmd*-mutated rats age.

Several DMD models have been developed in mice, such as mdx, mdx52, and mdx^{2cv-5cv}, that differ with respect to the size and position of mutations in their *Dmd* genes²⁴. Overall, their pathological phenotypes are considered to be similar with regard to the skeletal muscle. Research has indicated that in the absence of Dystrophin, the deletion length and positions in *Dmd* do not often correlate with clinical phenotypes in humans²⁸. The mild phenotypes of mdx mice become more severe when the genetic background is changed from C57BL/10 to DBA/2²⁷. Thus, these genetic differences between mice and rats are likely the primary cause of pathological variation resulting from the lack of Dystrophin protein rather than the difference in the mutation of the *Dmd* gene.

Considering the differences in the mutation patterns that cause in-frame or out-of-frame mutations, we initially assumed that the differences among individuals lacking Dystrophin, as shown in Figure 2 (and Supplementary Fig. 4b), could be attributed to variations in the deletion patterns generated by CRISPR/Cas. Given that the mutation pattern is not correlated to the clinical phenotypes in the absence of Dystrophin and that the Wistar-Imamichi rats used in this study were bred in a closed, but not isogenic, colony, it appears likely that the differences among individuals may also be due to variation in their genetic backgrounds.

In this paper, we report the generation of DMD model rats using the CRISPR/Cas system. Our results suggest that the *Dmd*-mutated rats, used as DMD model animals, will have a significant impact on future drug development aimed to treat DMD.

Methods

Animals. Wistar-Imamichi strain rats were purchased from the Institute for Animal Production (Ibaraki, Japan) and maintained in our laboratory under controlled environmental conditions: 23°C with a photoperiod of 12-h light and 12-h dark (lights on at 0800 h). Animals were fed commercial chow *ad libitum* (Lab MR-Breeder Standard; Nihon Nosan Kogyo; Yokohama, Japan). All animal experiments in this study were performed in accordance with the Guide for the Care and Use of Laboratory Animals of the University of Tokyo and were approved by the Institutional Animal Care and Use Committee of the University of Tokyo.

Generation of CRISPR/Cas9-induced rats. The choice of target sites and the construction of gRNAs were performed according to previously published methods²⁰. *Cas9* mRNA and gRNA were also transcribed *in vitro* according to a published protocol²⁰. Five-week-old female Wistar-Imamichi rats were superovulated by intraperitoneal injection of 25 IU equine chorionic gonadotropin (eCG) followed by 25 IU human chorionic gonadotropin (hCG) at intervals of 48 h, and mated overnight with male Wistar-Imamichi rats. Twenty hours after hCG injection, zygotes were collected and pronuclei-formed zygotes were transferred to M2 medium. Using a micro-injector (Narishige), approximately 4 pL of a mixture of 10 µg/mL gRNAs and 10 µg/mL *Cas9* mRNA was injected into each zygote, and then the zygotes were incubated in M16 medium for 1 h. The zygotes were then transferred into the oviductal ampullas (approximately 10 embryos per oviduct) of 8-week-old pseudopregnant rats.

After birth, 1–2-mm tail tips were obtained from the pups and used for genomic DNA extraction. PCR, using the primers listed in Supplementary Table 3, was performed to confirm the deletion in the target gene. PCR products were purified by agarose gel electrophoresis, and subsequently sequenced as previously reported²⁹. To elucidate the occurrence of mosaicism in F0 male rats, TA cloning followed by sequence analysis was performed in the individuals showing overlapping of their waveform data in the target loci.

RT-PCR. After TA muscles were homogenized using a Shake Master (ver. 1.0, Bio Medical Science Inc.; Tokyo, Japan), RNA was isolated with TRIzol (Invitrogen; Carlsbad, CA, USA) and reverse-transcribed to cDNA using SuperScriptII reverse transcriptase (Invitrogen). cDNA was used for PCR to detect *Dmd* and *Hprt* mRNA using the primers listed in Supplementary Table 3.

Histological analyses. Histological analyses were performed using a previously published method³⁰. Briefly, frozen sections (7–8 µm thick) of TA muscles were prepared transversely, and paraffin-embedded sections of the heart and diaphragm

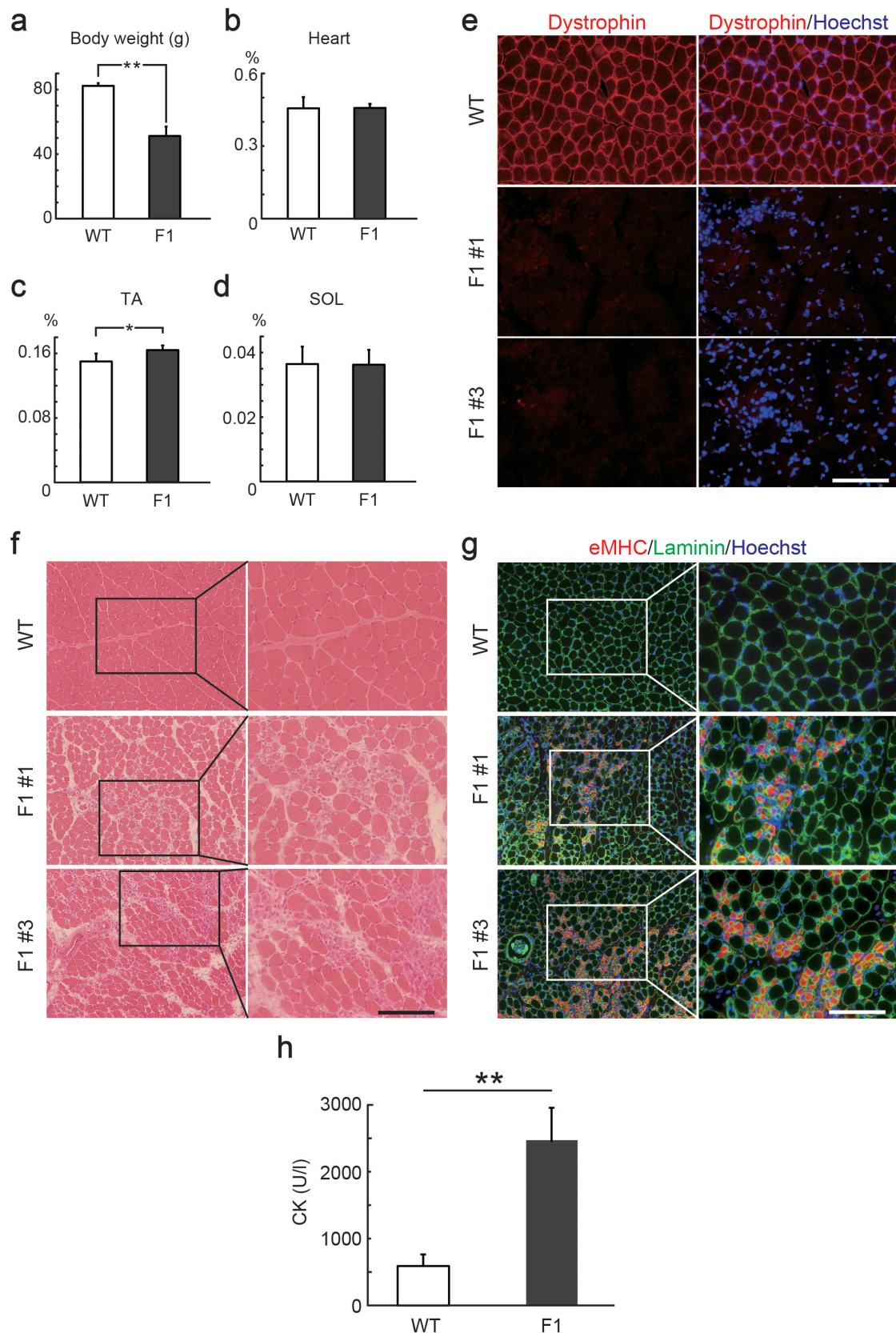


Figure 3 | Inheritance of mutations in the rat *Dmd* gene generated by CRISPR/Cas9. Comparison of body weight (a), weights of the heart (b), tibialis anterior (TA) muscle (c), and solaris (SOL) muscle (d) relative to body weight of 4-week-old wild type (WT) and F1 male rats. * $P < 0.05$, ** $P < 0.01$. (e) Cross sections of TA muscles in 4-week-old WT and F1 male rats stained with anti-Dystrophin (red) antibody. Scale bar = 100 μm . (f) Hematoxylin and eosin (H&E) staining of TA muscles in 4-week-old WT and F1 male rats. Scale bar = 100 μm . (g) Cross sections of TA muscles in 4-week-old WT and F1 male rats stained with anti-laminin (green) and anti-embryonic myosin heavy chain (eMHC, red) antibody. Scale bar = 100 μm . (h) Creatine kinase (CK) activity of *Dmd*-mutated F1 ($n = 5$) and age-matched WT ($n = 3$) rats. ** $P < 0.01$.



were subjected to histological analyses. The sections were used for hematoxylin and eosin (H&E) and Masson's trichrome staining, dehydrated, and mounted.

For immunostaining of laminin and the embryonic myosin heavy chain (eMHC), cryosections were fixed with 4% paraformaldehyde. For Dystrophin, cryosections were fixed with methanol. After blocking with 5% normal goat serum in phosphate-buffered saline containing 0.1% Triton X-100 (Sigma), cryosections were incubated overnight with primary antibodies (described below) at 4°C, followed by washing and incubation with AlexaFluor-conjugated secondary antibodies (1:500; Invitrogen) for 1 h. Nuclei were counterstained with Hoechst 33258. For quantitative analyses of centrally nucleated myofibers, 5 fields were randomly selected in HE stained sections using a 4× objective. Centrally nucleated myofibers were counted and divided by the total number of myofibers per the field. For quantitative analyses of myofiber diameters, 3 fields were randomly selected in the sections stained with anti-laminin antibody using a 10× objective. Photos were taken under a fluorescence microscope (BX51; Olympus; Tokyo, Japan) equipped with a digital camera (DP73; Olympus). The minimal Feret diameter and right ventricle area per section were calculated using ImageJ software.

Primary antibodies and their species of origin were as follows: anti-Dystrophin (rabbit polyclonal, 1:100; Santa Cruz Biotechnology), Dys2 (mouse monoclonal, 1:100; Novocastra; Newcastle upon Tyne, UK), anti-laminin (rabbit polyclonal, 1:100; Sigma), anti-eMHC (mouse monoclonal, F1.652, 1:100; Developmental Studies Hybridoma Bank), anti-Perilipin (rabbit monoclonal, D1D8, 1:500; Cell Signaling), anti- α -sarcoglycan (mouse monoclonal, AD1/20A6, 1:100; Novocastra), anti- β -dystroglycan (mouse monoclonal, 43DAG1/8D5, 1:100; Novocastra), and nNOS (rabbit polyclonal, 1:100; Invitrogen).

Immunoblotting. TA muscles were lysed in sample buffer [0.5 M Tris-HCl, 10% glycerol, 1% sodium dodecyl sulfate (SDS), and 10% 2-mercaptoethanol]. Protein extracts were separated on 4% (for Dystrophin) and 10% (for perilipin and α -tubulin) SDS-polyacrylamide gel followed by electroblotting to polyvinylidene fluoride membranes. Proteins were labeled with anti-Dystrophin (rabbit polyclonal; 1:1000), Dys2 (1:200), anti- α -tubulin (1:4000), and anti-Perilipin (1:2000) antibody, followed by incubation with horseradish peroxidase-labeled secondary antibody (1:10,000), and visualization using the ECL detection system (GE Healthcare Biosciences; Piscataway, NJ, USA).

Wire-hang test. A wire-hang test was performed to evaluate muscle strength. Each rat was suspended by allowing it to grasp a wire (diameter = 15 mm) using its forelimbs, which was placed 40 cm above a 10-cm-thick paper cushion. The time to fall was recorded and the value was multiplied by the body weight as an indication of muscle strength.

Creatine kinase activity. Creatine kinase activity in the sera from F1 rats and their age-matched WT rats was assayed with the Fuji Drychem system (Fuji Film Medical Co. Ltd.; Tokyo, Japan).

Statistical analyses. A Student's *t*-test was used to examine statistical differences between two groups. For the distribution of myofibers, median values were compared using the Wilcoxon rank sum test. *P*-values less than 0.05 were considered statistically significant. Graphed data represent means + SDs.

- Koenig, M., Monaco, A. P. & Kunkel, L. M. The complete sequence of dystrophin predicts a rod-shaped cytoskeletal protein. *Cell* **53**, 219–228 (1988).
- Hoffman, E. P., Brown, R. H. Jr. & Kunkel, L. M. Dystrophin: the protein product of the Duchenne muscular dystrophy locus. *Cell* **51**, 919–28 (1987).
- Vainzof, M. *et al.* Animal models for genetic neuromuscular diseases. *J. Mol. Neurosci.* **34**, 241–248 (2008).
- Kinali, M. *et al.* Muscle histology vs MRI in Duchenne muscular dystrophy. *Neurology* **76**, 346–353 (2011).
- Sekiguchi, M. *et al.* A deficit of brain dystrophin impairs specific amygdala GABAergic transmission and enhances defensive behaviour in mice. *Brain* **132**, 124–135 (2009).
- Anderson, J. L., Head, S. I., Rae, C. & Morley, J. W. Brain function in Duchenne muscular dystrophy. *Brain* **125**, 4–13 (2002).
- Beytia Mde, L., Vry, J. & Kirschner, J. Drug treatment of Duchenne muscular dystrophy: available evidence and perspectives. *Acta Myol.* **31**, 4–8 (2012).
- Nowak, K. J. & Davies, K. E. Duchenne muscular dystrophy and dystrophin: pathogenesis and opportunities for treatment. *EMBO Rep.* **5**, 872–876 (2004).
- Banks, G. B. & Chamberlain, J. S. The value of mammalian models for duchenne muscular dystrophy in developing therapeutic strategies. *Curr. Top. Dev. Biol.* **84**, 431–453 (2008).
- Nakamura, A. & Takeda, S. Mammalian models of Duchenne Muscular Dystrophy: pathological characteristics and therapeutic applications. *J. Biomed. Biotechnol.* **2011**, 184–393 (2011).
- Jacob, H. J. Functional genomics and rat models. *Genome Res.* **9**, 1013–1016 (1999).
- Abbott, A. Laboratory animals: the Renaissance rat. *Nature* **428**, 464–466 (2004).

- Geurts, A. M. *et al.* Knockout rats via embryo microinjection of zinc-finger nucleases. *Science* **325**, 433 (2009).
- Tesson, L. *et al.* Knockout rats generated by embryo microinjection of TALENs. *Nat. Biotechnol.* **29**, 695–696 (2011).
- Mali, P. *et al.* RNA-guided human genome engineering via Cas9. *Science* **339**, 823–826 (2013).
- Cong, L. *et al.* Multiplex genome engineering using CRISPR/Cas systems. *Science* **339**, 819–823 (2013).
- Wang, H. *et al.* One-step generation of mice carrying mutations in multiple genes by CRISPR/Cas-mediated genome engineering. *Cell* **153**, 910–918 (2013).
- Li, W., Teng, F., Li, T. & Zhou, Q. Simultaneous generation and germline transmission of multiple gene mutations in rat using CRISPR-Cas systems. *Nat. Biotechnol.* **31**, 684–686 (2013).
- Li, D. *et al.* Heritable gene targeting in the mouse and rat using a CRISPR-Cas system. *Nat. Biotechnol.* **31**, 681–683 (2013).
- Fujii, W., Kawasaki, K., Sugiura, K. & Naito, K. Efficient generation of large-scale genome-modified mice using gRNA and CAS9 endonuclease. *Nucleic Acids Res.* **41**, e187 (2013).
- Fu, Y. *et al.* High-frequency off-target mutagenesis induced by CRISPR-Cas nucleases in human cells. *Nat. Biotechnol.* **31**, 822–826 (2013).
- Mali, P. *et al.* CAS9 transcriptional activators for target specificity screening and paired nickases for cooperative genome engineering. *Nat. Biotechnol.* **31**, 833–838 (2013).
- Briguet, A. *et al.* Histological parameters for the quantitative assessment of muscular dystrophy in the mdx-mouse. *Neuromuscul. Disord.* **14**, 675–682 (2004).
- Willmann, R. *et al.* Mammalian animal models for Duchenne muscular dystrophy. *Neuromuscul. Disord.* **19**, 241–249 (2009).
- Li, W., Liu, W., Zhong, J. & Yu, X. Early manifestation of alteration in cardiac function in dystrophin deficient mdx mouse using 3D CMR tagging. *J. Cardiovasc. Magn. Reson.* **11**, 40 (2009).
- Judge, D. P., Kass, D. A., Thompson, W. R. & Wagner, K. R. Pathophysiology and therapy of cardiac dysfunction in Duchenne muscular dystrophy. *Am. J. Cardiovasc. Drugs* **11**, 287–294 (2011).
- Fukada, S. *et al.* Genetic background affects properties of satellite cells and mdx phenotypes. *Am. J. Pathol.* **176**, 2414–2424 (2010).
- Blake, D. J., Weir, A., Newey, S. E. & Davies, K. E. Function and genetics of dystrophin and dystrophin-related proteins in muscle. *Physiol. Rev.* **82**, 291–329 (2002).
- Fujii, W., Kano, K., Sugiura, K. & Naito, K. Repeatable construction method for engineered zinc finger nuclease based on overlap extension PCR and TA-cloning. *PLoS One* **8**, e59801 (2103).
- Nakamura, K. *et al.* Loss of SPARC in mouse skeletal muscle causes myofiber atrophy. *Muscle Nerve* **48**, 791–799 (2013).

Acknowledgments

This work was supported by the Japan Society for the Promotion of Science KAKENHI Grants (24-7714, 25892010, 25252056, 21221008, and 25292185) and the Mitsui Sumitomo Insurance Welfare Foundation. We would like to thank Editage for providing editorial assistance.

Author contributions

K.N. and W.F. participated in study design, performed the experiments, analyzed the data, and wrote the manuscript. M.T. performed the pathological analyses. J.T. performed immunoblotting/immunostaining and assisted with the preparation of the revised manuscript. N.T. and S.T. conducted the animal experiments. K.Y. participated in study design and manuscript preparation. K.N. and M.N. oversaw the study.

Additional information

Supplementary information accompanies this paper at <http://www.nature.com/scientificreports>

Competing financial interests: The authors declare no competing financial interests.

How to cite this article: Nakamura, K. *et al.* Generation of muscular dystrophy model rats with a CRISPR/Cas system. *Sci. Rep.* **4**, 5635; DOI:10.1038/srep05635 (2014).



This work is licensed under a Creative Commons Attribution-NonCommercial-NoDerivs 4.0 International License. The images or other third party material in this article are included in the article's Creative Commons license, unless indicated otherwise in the credit line; if the material is not included under the Creative Commons license, users will need to obtain permission from the license holder in order to reproduce the material. To view a copy of this license, visit <http://creativecommons.org/licenses/by-nc-nd/4.0/>