

Keywords: endometrial cancer; prognostic marker; HSF1

# High level of HSF1 associates with aggressive endometrial carcinoma and suggests potential for HSP90 inhibitors

H Engerud<sup>1,2</sup>, I L Tangen<sup>1,2</sup>, A Berg<sup>1,2</sup>, K Kusonmano<sup>1,2,3</sup>, M K Halle<sup>1,2</sup>, A M Øyan<sup>1,4</sup>, K H Kalland<sup>1,4</sup>, I Stefansson<sup>5</sup>, J Trovik<sup>1,2</sup>, H B Salvesen<sup>1,2</sup> and C Krakstad<sup>\*,1,2</sup>

<sup>1</sup>Centre for Cancer Biomarkers, Department of Clinical Science, University of Bergen, Bergen, Norway; <sup>2</sup>Department of Gynecology and Obstetrics, Haukeland University Hospital, Bergen, Norway; <sup>3</sup>Computational Biology Unit, University of Bergen, Bergen, Norway; <sup>4</sup>Department of Microbiology, Haukeland University Hospital, Bergen, Norway and <sup>5</sup>Department of Pathology, Haukeland University Hospital, Bergen, Norway

**Background:** Recent identification of a specific role of HSF1 in cancer progression has led to new relevance of HSF1 as both a prognostic and a predictive marker. The role of HSF1 in endometrial cancer has so far been unexplored.

**Methods:** A total of 823 lesions from endometrial carcinoma precursors, primary tumours and metastases were prospectively collected and explored for HSF1 protein expression in relation to established markers for aggressive disease and survival. Transcriptional alterations related to HSF1 protein level were investigated by microarray analysis for 224 freshly frozen samples in parallel.

**Results:** High expression of HSF1 protein in endometrial carcinoma is significantly associated with aggressive disease and poor survival (all  $P$ -values  $\leq 0.02$ ), also among ER $\alpha$ -positive patients presumed to have good prognosis. The HSF1-related gene signatures increase during disease progression and were also found to have prognostic value. Gene expression analyses identified HSP90 inhibition as a potential novel therapeutic approach for cases with high protein expression of HSF1.

**Conclusions:** We demonstrate for the first time in endometrial cancer that high expression of HSF1 and measures for transcriptional activation of HSF1 associate with poor outcome and disease progression. The HSP90 inhibitors are suggested as new targeted therapeutics for patients with high HSF1 levels in tumour in particular.

Endometrial carcinoma is the fourth most common neoplasm among women in Europe, and the incidence rate is rising. The overall prognosis is good, with a 5-year survival of ~80% in developed countries (Amant *et al*, 2005). Still, 15%–20% of patients suffer recurrence. Better markers are needed to earlier detect and individualise treatment. Several biomarkers have shown associations with clinical characteristics and prognosis, such as oestrogen receptor (ER) and progesterone receptor (PR) (Salvesen *et al*, 2012; Wik *et al*, 2013). However, in contrast to breast cancer (Green *et al*, 2013), none are currently implemented in the routine clinical

practice as prognostic or predictive markers in endometrial carcinoma treatment.

Heat shock factor 1 (HSF1) is a key transcription factor in the regulation of cellular protein homeostasis. In response to various physiological stresses, HSF1 drives the transcription of heat shock proteins (HSPs), a response that is conserved from yeast to humans (Wiederrecht *et al*, 1988; Rabindran *et al*, 1991; Xiao *et al*, 1999). The HSF1 binds to the 5' promoter regions of all HSP genes and triggers massive transcription of genes such as *HSP90* and *HSP70*. The HSPs act as chaperones to facilitate normal protein folding

\*Correspondence: Dr C Krakstad; E-mail: camilla.krakstad@med.uib.no

Received 13 February 2014; revised 11 April 2014; accepted 23 April 2014; published online 22 May 2014

© 2014 Cancer Research UK. All rights reserved 0007–0920/14

and protect the proteome from misfolding and aggregation that could cause lethal damage. The HSF1 also protects cells from a variety of potentially lethal stressors by modulating the expression of a variety of nonchaperone proteins (Page *et al*, 2006; Guertin and Lis, 2010). These survival-linked roles of HSF1 might, however, be used to overcome defence mechanisms in normal cells and thereby contribute to oncogenesis. The role of HSF1 to promote tumour cell survival was demonstrated in *Hsf1* knockout mice (Dai *et al*, 2007; Jin *et al*, 2011), having reduced susceptibility to tumour formation. Interestingly, the transcriptional programme regulated by HSF1 in highly malignant tumours is distinct from the heat shock programme induced by thermal stress, but are commonly activated in a range of human malignancies (lung, breast and colon cancers). *HSF1* has also been identified as a potent metastasis-promoting gene in malignant melanomas (Scott *et al*, 2011).

Reports have suggested a potential for HSPs as prognostic biomarkers in cancers (Khalil *et al*, 2011); however, whether HSF1 level adds clinically relevant information for determining prognosis or response to therapy is not established. High HSF1 level is an independent predictor of poor outcome in breast cancer, also for the ER-positive patient subgroup (Santagata *et al*, 2011) and in hepatocellular carcinoma (HCC) (Fang *et al*, 2012), and the level of HSF1 has been reported to be high in a number of other cancers, without linking this to prognosis (Mendillo *et al*, 2012). The role of HSF1 in endometrial carcinoma is largely unexplored. We here report for the first time a significant association between high HSF1 level and endometrial cancer progression based on the analyses of more than 800 lesions from endometrial carcinoma precursors, primary tumours and metastases. In addition, based on results from comprehensive molecular profiling, HSP90 inhibitors are suggested as potential new targeting therapeutics for cases with high HSF1 levels in particular.

## MATERIALS AND METHODS

**Ethics statement.** All parts of the study have been approved according to Norwegian legislation. The study was approved by the Norwegian Data Inspectorate, Norwegian Social Sciences Data Services and the Regional Committee for Medical Research Ethics, REC West (NSD15501; REK 052.01). All participants gave written informed consent.

**Patient series.** A total of 823 lesions from endometrial carcinoma precursors, primary tumours and metastases were prospectively collected and explored for HSF1 protein expression in formalin-fixed paraffin-embedded (FFPE) tissue in relation to established markers for aggressive disease and survival. Transcriptional alterations related to HSF1 protein level were investigated by mRNA microarray analysis for 224 freshly frozen samples collected in parallel. The patients were all diagnosed with endometrial carcinoma at Haukeland University Hospital, Bergen, Norway, during the period 2001–2012. Tumour tissue was prospectively collected and patients were staged according to FIGO 2009 criteria. Age at diagnosis, histologic subtype, histologic grade, treatment and follow-up were obtained from the clinical records and histopathology reports generated routinely in a tumour board setting. For FFPE tissues, tissue microarrays (TMAs) were constructed as previously described (Stefansson *et al*, 2004). Briefly, using a custom-made precision instrument (Beecher Instruments, Silver Spring, MD, USA) three cylinders (for complex atypical hyperplasias (CAHs) and primary tumours) or one cylinder (for metastatic lesions) of 0.6 mm were retrieved from the areas with high tumour purity and mounted in a paraffin block. The TMAs from 28 CAH samples and 176 metastatic lesions from a total of 84 corresponding primary tumours were included in the

study to investigate the differential expression of HSF1 during disease progression.

**Immunohistochemistry.** Tissue microarray sections (5  $\mu$ m) were dewaxed with xylene and rehydrated in ethanol before microwave antigen retrieval in target retrieval solution, pH 6. Following peroxidase block, the TMAs were incubated for 30 min at room temperature with rabbit monoclonal antibody to HSF1 (1:100; no. 4356, Cell Signaling, Danvers, MA, USA) followed by 30 min of incubation with secondary HRP-conjugated anti-rabbit antibody and DAB-chromogen (EnVision detection system, Dako, Glostrup, Denmark). Sections were counterstained in haematoxylin before dehydration and mounting. The immunostained sections were reviewed by light microscopy and scored visually by a semiquantitative and subjective method. Evaluation of staining was performed blinded for the clinical characteristics and outcome. A staining index was calculated as a product of staining intensity (0–3) and area of positive tumour cells ( $1 \leq 10\%$ ,  $2 = 10\%–50\%$  and  $3 \geq 50\%$ ). In subsequent statistical analyses, indexes were grouped in tertiles, considering the size of the subgroups and the number of events in each category. Tertile division was selected according to similarity in survival inside each tertile. Index 0–4 was considered low, index 6 intermediate and index 9 was considered high. The  $\kappa$ -value was calculated to be 0.72 for HSF1 in three groups.

**Gene expression analyses.** Gene expression alterations in relation to HSF1 expression were investigated in fresh tissues from 8 CAHs, 174 primary endometrial cancers and 42 metastatic endometrial cancer lesions, the latter from 26 individual patients. RNA was extracted using the RNeasy Mini Kit (Qiagen, Hilden, Germany) and hybridised to Agilent Whole Human Genome Microarrays 44k (cat. no. G4112F) according to the manufacturer's instructions, and scanned using the Agilent Microarray Scanner Bundle (Agilent, Santa Clara, CA, USA). Normalisation of raw data and expression analyses were performed using the J-Express software (Molmine, Bergen, Norway). Expression data were normalised using median over entire array. Mean spot signal was used as intensity measure.

Differentially expressed genes in tumours with high levels of HSF1 were identified using the feature subset selection (FSS) method ( $P < 0.05$ , fold  $> 1.5$ ) when high HSF1 was defined as immunohistochemistry (IHC) staining index 9 (upper tertile), and SAM (significance analyses of microarray) when defining high HSF1 as upper tertile of mRNA values ( $P < 0.001$ , FDR  $< 0.001$ ). Connectivity map (<http://www.broadinstitute.org/cmap/>) queries were performed using the identified gene lists. The presented connectivity map results represent the top-ranked compounds negatively correlated to the HSF1-defined gene lists (Lamb *et al*, 2006).

**HSF1 gene signature analyses.** The recently published HSF1-CaSig gene signature (456 genes) and the HSF1-CaSig3 gene signature (207 genes) were explored in our data set (Mendillo *et al*, 2012). Only genes with overlapping gene symbols between the previously published list and the Agilent gene symbol list were included in the analyses (Supplementary Table 1). For the HSF1-CaSig gene signature scores, the average value of the expression of 411 genes positively correlated with HSF1 activation were calculated for each patient. The HSF1-CaSig3 signature, the average value of defined negative genes (39), was subtracted from the average value of positive genes (149). For survival analysis, high signature scores were defined as top 25%, whereas low signature score was defined as below 75% limit.

**Statistical analysis.** Statistical analyses were done using IBM SPSS Statistics software version 21 (IBM, Armonk, NY, USA). Probability of  $< 0.05$  was considered statistically significant. Groups for categorical variables were compared using Pearson's  $\chi^2$ -test or Fisher's exact test, when appropriate. Mann-Whitney *U*-test was used to test correlations for continuous variables.

Univariate survival analyses of time to death due to endometrial carcinoma (disease-specific survival) were performed using the Kaplan–Meier (product-limit) method. The date of primary surgery is defined as entry date. Patients who died from other causes were censored at the date of death. Differences in survival between groups were estimated by the log-rank (Mantel–Cox) test. Variables were visually examined by a log-minus-log plot to check the assumptions about proportionality over time, and tested for potential interactions before inclusion in the multivariate proportional hazards regression models (Cox analyses). Unadjusted and adjusted hazard ratios were calculated as measures of effect. Significance of change in protein expression from primary tumours to corresponding metastatic lesions was evaluated using Fisher's exact and Wilcoxon's signed-rank tests. All  $P$ -values were two sided.

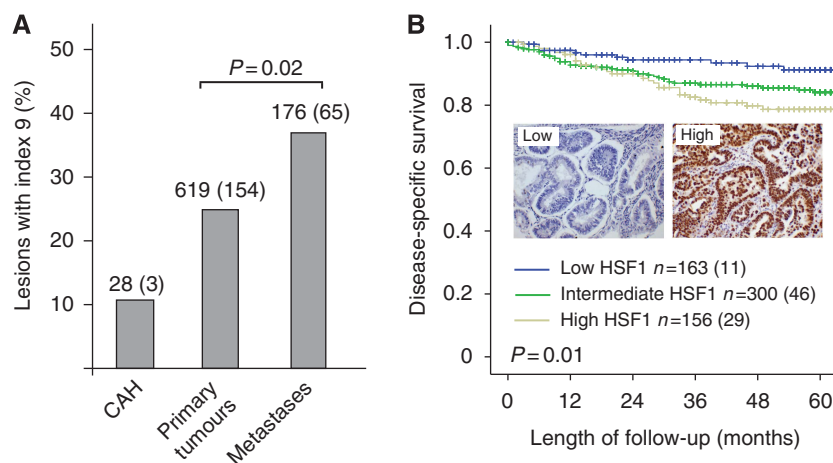
## RESULTS

**Nuclear HSF1 is associated with aggressive endometrial cancer and poor prognosis.** We evaluated 823 endometrial carcinoma samples by IHC for expression of HSF1. For all cases with positive staining, HSF1 staining was nuclear. The HSF1 mRNA level and proportion of lesions with high protein score (index 9) were assessed in CAHs, primary endometrial carcinomas and metastatic lesions. A significant increase in HSF1 protein level (Figure 1A) and mRNA (Supplementary Figure 1A) was detected from the primary tumours to metastases. When exploring the protein expression levels according to tertile limits for the data set, the low expression group (index 0–4) had best survival and the high expression group (index 9) demonstrated to have the worst prognosis, as illustrated in Figure 1B. The significant prognostic impact of HSF1 level was also reflected when exploring mRNA level with worst outcome for patients with expression levels above the upper tertile ( $P=0.03$ , Supplementary Figure 1B). High expression of HSF1 was significantly associated with high age, nonendometrioid histological type, high grade and aneuploidy (all  $P$ -values  $<0.02$ ; Table 1). No association with PR status was seen; however, both middle and high HSF1 cases were more likely to be ER $\alpha$  positive ( $P<0.001$ ). In a multivariate Cox analysis adjusting for age, FIGO stage, histological type and grade, HSF1 showed a tendency, although not statistically significant, as an independent

marker of prognosis ( $P=0.08$ ) when the whole population of endometrial cancer patients was investigated.

**High HSF1 is associated with poor outcome in ER-positive tumours.** To evaluate the observation that high HSF1 associates with intact expression of ER $\alpha$ , we performed subgroup analyses of patients according to receptor status. Among the 471 ER $\alpha$ -positive patients, high HSF1 (index 9) was significantly associated with nonendometrioid type, high grade and aneuploidy, a pattern also seen for the ER $\alpha$ -negative group (Table 2). In survival analysis, high HSF1 expression was significantly associated with poor survival for both ER $\alpha$ -positive (Figure 2A) and ER $\alpha$ -negative patients (Figure 2B). In a multivariate Cox analysis adjusting for age, FIGO stage, histological type and grade, we found HSF1 to be an independent prognostic marker only in the group of ER $\alpha$ -positive patients (hazard ratio (HR): 6.2; 95% confidence interval (CI) 1.5–26.4;  $P=0.014$ ).

**HSF1-related gene signatures are associated with poor survival and increase during disease progression.** Recently, the transcriptional program regulated by HSF1 during malignant development was described to be distinct from heat shock and specific to highly malignant cells. This HSF1 cancer programme was found to be highly active in aggressive breast, lung and colon cancers and with prognostic as well as therapeutic implications (Mendillo *et al*, 2012). We therefore investigated whether these cancer-associated HSF1 gene signatures detected in other cancer types could also be used to detect phenotypic differences in endometrial cancer. Interestingly, both the HSF1-CaSig and the HSF1-CaSig3 scores were found to be highly significantly associated with disease-specific survival in our cohort of endometrial carcinoma patients ( $P=0.001$ , and  $P=0.008$  respectively, Figure 3A and C). Adjusting for age, FIGO stage, histological type and grade, we found the HSF1-CaSig signature to independently predict poor survival (HR: 2.3; 95% CI 1.0–5.3;  $P=0.04$ ), with a similar tendency, although not statistically significant, for the HSF1-CaSig3 ( $P=0.06$ ). When exploring the signatures during disease progression, the HSF1-CaSig score (Figure 3B) increased significantly from primary tumours to metastatic lesions ( $P=0.001$ ), whereas the HSF1-CaSig3 score (Figure 3D) showed significant increase from CAHs to primary tumours ( $P=0.004$ ) with a further increase to the metastatic lesions ( $P<0.001$ ).



**Figure 1.** Heat shock factor 1 (HSF1) is associated with aggressive disease in endometrial cancer. A significant increase in HSF1 protein (A) is demonstrated from primary to metastatic lesions ( $P=0.02$ ). High HSF1 also associates with decreased endometrial carcinoma survival as illustrated by Kaplan–Meier survival curves for high, intermediate and low expression levels for HSF1 (B) with representative cases for low immunohistochemical protein expression of HSF1 compared with high expression in insets.

**Table 1.** Heat shock factor 1 (HSF1) protein expression in primary tumours in relation to clinicopathological variables in endometrial carcinoma patients

Variable	0–4, n (%)	6, n (%)	9, n (%)	P-value <sup>a</sup>
Age (years)				0.02
<66	93 (55)	176 (57)	71 (44)	
≥66	75 (45)	133 (43)	92 (56)	
FIGO-09 stage				0.75
I–II	144 (86)	258 (84)	135 (83)	
III–IV	24 (14)	49 (16)	28 (17)	
Histologic type				<0.001
Endometrioid	147 (88)	268 (87)	114 (70)	
Nonendometrioid	21 (12)	41 (13)	49 (30)	
Histologic grade				0.001
Grade 1/2	119 (72)	220 (72)	88 (55)	
Grade 3	47 (28)	87 (28)	72 (45)	
Ploidy				<0.001
Diploid	80 (84)	179 (84)	68 (61)	
Aneuploid	15 (16)	35 (16)	43 (39)	
ER $\alpha$				0.001
Positive	104 (63)	242 (79)	125 (77)	
Negative	60 (37)	63 (21)	38 (23)	
PR				0.44
Positive	124 (74)	240 (78)	119 (73)	
Negative	43 (26)	67 (22)	43 (27)	

Abbreviations: ER = oestrogen receptor; FIGO = International Federation of Gynecology and Obstetrics; PR = progesterone receptor. High level of HSF1 is associated with several of the established clinicopathological markers for aggressive disease.

<sup>a</sup>Two-sided Pearson's  $\chi^2$ -test. Missing data for ploidy in 220 cases, PR in 4, ER in 8 and grade in 7 cases.

**HSP90 inhibitors and protein synthesis inhibitors are suggested as therapy for patients with high HSF1.** To further explore the potential for HSF1 as predictive marker for response to therapy in endometrial cancer, we searched the Connectivity Map database of genome-wide transcriptional expression data from cultured human cells treated with bioactive small molecules (<http://www.broadinstitute.org/cmap/>). As an HSF1-transcriptional signature is difficult to implement as a predictive marker in a routine clinical setting, we defined patients as HSF1 high and HSF1 low using IHC or HSF1 mRNA levels. We generated query signatures for both cases with high HSF1 protein expression alone and cases with a combined high HSF1 protein and mRNA levels. Interestingly, we identified protein synthesis inhibitors as top-ranked anti-correlated with high protein HSF1, followed by one HSP90 inhibitor (top panel; Table 3). For patients with both high HSF1 protein and mRNA levels, the HSP90 inhibitors Geldanamycin and Tanespimycin were top-ranked anti-correlated with the gene signature for high HSF1 (lower panel; Table 3).

## DISCUSSION

A key challenge in tailoring cancer treatments is to establish better markers to improve identification of high-risk from low-risk patients. To resolve this, better understanding of the biological processes underlying cancer progression is needed. For endometrial cancer, few prognostic markers are available and presently the therapeutic strategy is not based on molecular subclass, despite increasing evidence for this being relevant for clinical phenotypes (Salvesen *et al*, 2009; Kandath *et al*, 2013).

The HSF1 has recently been suggested as a key regulator of carcinogenesis in breast cancer, a cancer type having many similarities with endometrial carcinomas, including the hormone dependency for subgroups in particular (Salvesen *et al*, 2012). Here, we demonstrate that high expression of HSF1 on protein and mRNA levels in endometrial cancers reflect phenotype, and we also find a significant increase of HSF1 from primary to metastatic lesions. The potential of HSF1 detected by IHC as a prognostic marker was recently reported in breast cancer (Santagata *et al*, 2011) and high levels of HSF1 protein were later found in meningioma, cervix, colon, lung, pancreatic and prostate cancers (Mendillo *et al*, 2012). Although increased levels of HSF1 were not investigated in relation to prognosis in these cancers, the findings taken together point to a universal role for HSF1 in solid tumours. In breast cancer, high HSF1 is also an independent marker of poor survival in the ER $\alpha$ -positive subgroup (Santagata *et al*, 2011). Here, we show that HSF1 is an independent prognostic marker within the ER $\alpha$ -positive patients also in endometrial cancer. This finding could strengthen the hypothesis proposed that high HSF1 might promote an ER $\alpha$ -negative phenotype by inhibiting oestrogen-dependent transactivation (Khaleque *et al*, 2008). Interestingly, high HSF1 is also associated with poorer survival in the ER $\alpha$ -negative population. This is in line with cell line studies where depletion of HSF1 reduces the malignant state of the cell regardless of ER status (Dai *et al*, 2007). More work on the complex interplay between HSF1 and ER $\alpha$  is needed to fully understand their relation; however, our data support that HSF1 might have a potential clinical utility for identifying patients with ER $\alpha$ -positive tumours, normally regarded as prognostically favourable, who could benefit from adjuvant therapy.

To further evaluate the importance of HSF1 in endometrial cancer, we investigated a recently published gene expression signature describing the malignant network controlled by HSF1. In normal homeostasis, HSF1 is known to support the survival and longevity of cells under stress, a function that might be exploited by the tumour cells to prolong survival and develop a malignant state. Increasing evidence supports a role for HSF1 in carcinogenesis, and HSF1 has also recently been shown to play a fundamental role in cancer biology and cancer cell proliferation in mouse models (Dai *et al*, 2007). Eliminating HSF1 in mouse models has extraordinary consequences on tumour formation and survival in response to mutations in known drivers like *Ras* and *p53*. The *Hsf1* knockout mice had a longer latency period before development of tumours and showed reduction in tumour incidence and lower overall tumour burden. These results pointed to an orchestrating role for HSF1 in cancer, rather than HSF1 acting as a classical oncogene or tumour suppressor. In human cancers, a direct involvement of HSF1 in cancer progression was linked to a HSF1-regulated transcriptional program distinct from heat shock in breast cancer (Mendillo *et al*, 2012) and the defined HSF1-regulated transcriptional programme was found to be high in both breast and colon carcinomas, and associated with poor outcome in breast cancer. Apparently in line with this, our study of a large cohort of endometrial cancer patients supports that this HSF1-related cancer signature is significantly associated with poor prognosis. In addition, the observed increase in both HSF1 protein and mRNA levels, and the increase in HSF1-signature scores from primary to metastatic lesions from endometrial cancer patients, further supports the importance of HSF1 in tumour progression. It is interesting that the link between phenotype and HSF1-related signatures derived from breast cancer cell line studies, HSF1-CaSig and HSF1-CaSig3 (Mendillo *et al*, 2012), are also valid in clinical samples from endometrial cancer patients, especially with regard to prognostic impact. These signatures describe a complex transcriptional program regulating cellular processes with diverse functions and our

Table 2. Heat shock factor 1 (HSF1) protein expression in primary tumours related to clinicopathological variables stratified for ER $\alpha$  status

Variable	ER $\alpha$ -positive patients				ER $\alpha$ -negative patients			
	Low, n (%)	Middle, n (%)	High, n (%)	P-value <sup>a</sup>	Low, n (%)	Middle, n (%)	High, n (%)	P-value <sup>a</sup>
Age (years)				0.4				<b>0.001</b>
< 66	55 (53)	139 (57)	63 (50)		35 (58)	34 (54)	8 (21)	
≥ 66	49 (47)	103 (43)	62 (50)		25 (42)	29 (46)	30 (79)	
FIGO-09 stage				0.9				<b>0.03</b>
I–II	93 (89)	215 (89)	113 (90)		49 (82)	41 (65)	22 (58)	
III–IV	11 (11)	27 (11)	12 (10)		11 (18)	22 (35)	16 (42)	
Histologic type				<b>0.001</b>				< <b>0.001</b>
Endometrioid	101 (97)	225 (93)	105 (84)		43 (72)	39 (62)	9 (24)	
Nonendometrioid	3 (3)	17 (7)	20 (16)		17 (28)	24 (38)	29 (76)	
Histologic grade				<b>0.004</b>				< <b>0.001</b>
Grade 1/2	86 (84)	197 (82)	83 (68)		31 (53)	19 (31)	5 (13)	
Grade 3	17 (16)	44 (18)	39 (32)		28 (47)	43 (69)	33 (87)	
Metastatic nodes				0.97				0.16
Negative	83 (92)	183 (93)	96 (92)		43 (86)	36 (75)	22 (69)	
Positive	7 (8)	14 (7)	8 (8)		7 (14)	12 (25)	10 (31)	
Ploidy				< <b>0.001</b>				<b>0.01</b>
Diploid	57 (89)	145 (88)	57 (70)		21 (72)	31 (67)	11 (38)	
Aneuploid	7 (11)	20 (12)	25 (30)		8 (28)	15 (33)	18 (62)	

Abbreviations: ER = oestrogen receptor; FIGO = International Federation of Gynecology and Obstetrics. Low = index 0–4, middle = index 6 and high = index 9.  
<sup>a</sup>Two-sided Pearson’s  $\chi^2$ -test; significant P-values (<0.05) are in bold.

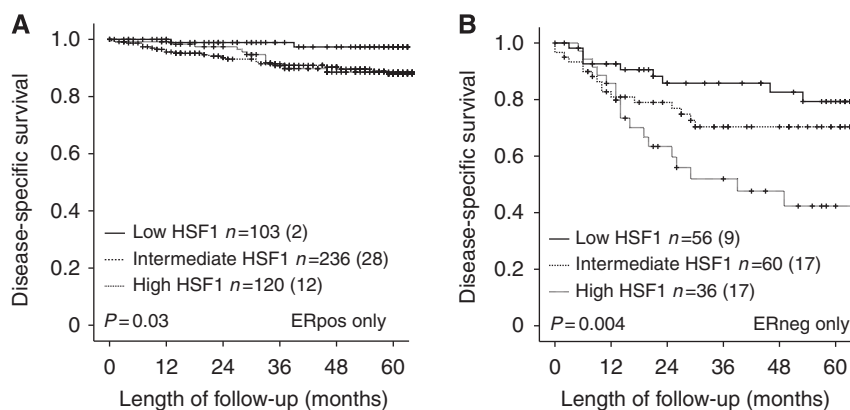


Figure 2. Heat shock factor 1 (HSF1) level predicts outcome in ER $\alpha$ -positive and -negative subgroups. The HSF1 level predicts outcome in ER $\alpha$ -positive and -negative subgroups, as illustrated for ER $\alpha$ -positive patients in (A) and ER $\alpha$ -negative patients in (B). Kaplan–Meier plots give number of cases in each group followed by the number of endometrial carcinoma deaths in parentheses.

findings suggest that HSF1 might also be a potential target for developing therapeutics for metastatic endometrial carcinomas. In a routine clinical setting, a gene signature might be less applicable when determining preferred treatment strategies, and IHC-based biomarkers are more easily applied in the routinely collected formalin-fixed tissue. When exploring for agents that could revert the gene signatures of endometrial cancer patients with high HSF1 as detected by IHC in connectivity map, high levels of HSF1 in patient samples suggest drugs targeting HSP90 and protein synthesis as particularly relevant. This identification of HSP90 inhibitors among the top-ranked potential therapeutics is reassuring, given the already well-known link between HSF1 and HSP proteins. Several clinical trials are presently testing

HSP90 inhibitors in cancer patients (Kim *et al*, 2009). Although further development of both Geldanamycin and the analogue Tanespimycin has been terminated (Neckers and Workman, 2012), our data support that targeting HSP90 in cancer is still highly relevant (Barrott and Haystead, 2013). We also identified two protein synthesis inhibitors as top-ranked anti-correlated with gene signatures for high HSF1 protein level, that is, the antibiotic Anisomycin and the alkaloid Lycorine. This finding is interesting in light of the recent publication linking HSF1 to protein translation and promising effect of the translation inhibitor rohitin in mice experiments (Santagata *et al*, 2013). More work is needed to unravel whether translational inhibitors might have a role for treatment of endometrial cancer.

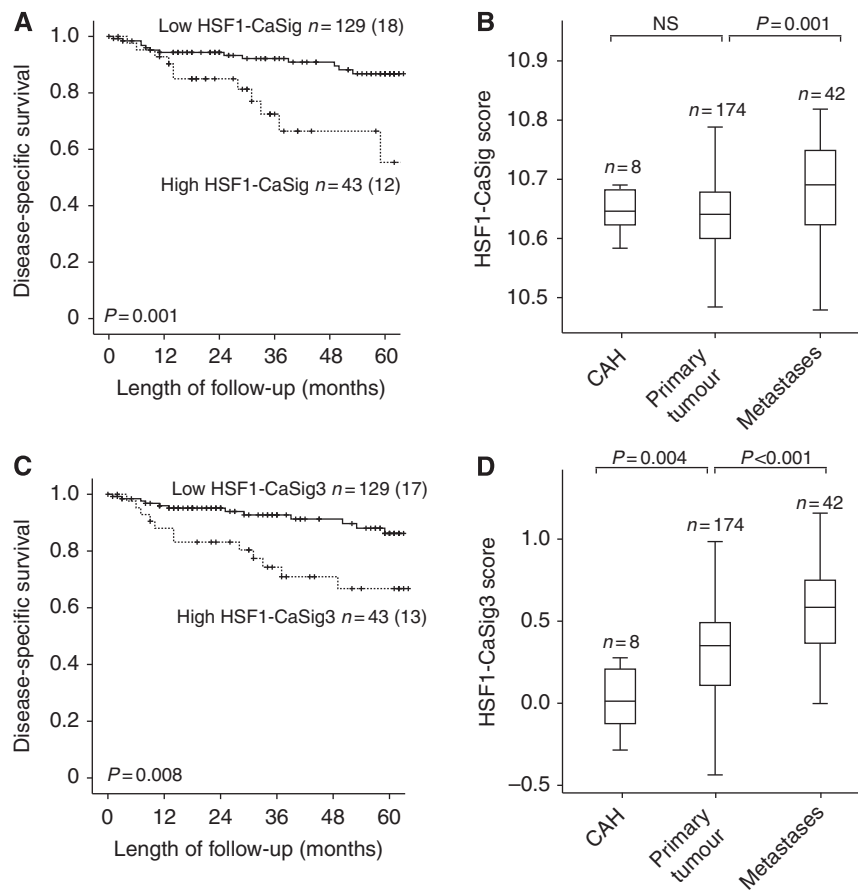


Figure 3. Heat shock factor 1 (HSF1)-related cancer programme is linked to poor prognosis in endometrial cancer. High level of the HSF1-related signatures defined in breast cancer validate to associate with poor disease-specific survival (A and C) and disease progression from CAHs through primary to metastatic endometrial carcinoma lesions for both gene signature HSF1-CaSig and HSF1-CaSig3 (B and D). Number of cases is given for each category followed by number of endometrial carcinoma deaths in parentheses for the survival curves. Numbers above the box plots represent cases investigated in each category.

Table 3. Identified compounds negatively correlated to gene signatures describing primary endometrial carcinoma tumours with high HSF1 protein expression (top panel) and high HSF1 protein and mRNA levels (lower panel)

Rank	Name of compound	Description	N <sup>a</sup>	P-value <sup>b</sup>
<b>Negatively correlated with high HSF1 protein expression in primary tumours</b>				
1	Anisomycin	Protein synthesis inhibitor	4	<0.0001
2	Lycorine	Protein synthesis inhibitor	5	0.0001
3	Monorden (Radicicol)	HSP90 inhibitor	22	0.0002
<b>Negatively correlated with high HSF1 mRNA and high HSF1 protein expression in primary tumours</b>				
1	Geldanamycin	HSP90 inhibitor	15	<0.0001
2	Tanespimycin	HSP90 inhibitor	62	<0.0001
3	Trichostatin A	HDAC inhibitor	182	<0.0001
4	Mycophenolic acid	Immunosuppressor	3	0.00004
5	Genistein	Topoisomerase II inhibitor	17	0.0001
6	Monorden (Radicicol)	HSP90 inhibitor	22	0.0001

Abbreviations: HDAC = histone deacetylase; HSF1 = heat shock factor 1; HSP90 = heat shock protein 90.

<sup>a</sup>N is the number of instances in which the compounds were tested in the Connectivity map.

<sup>b</sup>The expression changes from the compounds tested were scored according to the HSF1 mRNA/protein expression signatures, and the P-value for each compound represents the distribution of this score in the N instances as compared with the distribution of these scores among all compounds tested, using a permutation test (Lamb et al, 2006).

We here demonstrate for the first time that nuclear staining of HSF1 and HSF1-related signatures are associated with aggressive disease and poor survival in endometrial cancer. Our study also suggests that HSF1 levels may predict response to drugs

targeting HSP90 or protein synthesis, and this needs further testing in the context of clinical trials. Furthermore, the identified increase in HSF1 level and HSF1-related signatures during disease progression also underline the importance of this

factor in carcinogenesis and should add momentum to the emerging focus on HSF1 as an important factor for developing new cancer therapeutics.

## ACKNOWLEDGEMENTS

We thank Ellen Valen, Britt Edvardsen, Kadri Madisoo, Bendik Nordanger, Hua My Hoang and Tormund S Njølstad for technical assistance. This study was supported by Helse Vest, the University of Bergen, The Norwegian Cancer Society, The Research Council of Norway and Bergen Medisinske Forskningsstiftelse.

## CONFLICT OF INTEREST

The authors declare no conflict of interest.

## REFERENCES

- Amant F, Moerman P, Neven P, Timmerman D, Van Limbergen E, Vergote I (2005) Endometrial cancer. *Lancet* **366**(9484): 491–505.
- Barrott JJ, Haystead TA (2013) Hsp90, an unlikely ally in the war on cancer. *FEBS J* **280**(6): 1381–1396.
- Dai C, Whitesell L, Rogers AB, Lindquist S (2007) Heat shock factor 1 is a powerful multifaceted modifier of carcinogenesis. *Cell* **130**(6): 1005–1018.
- Fang F, Chang R, Yang L (2012) Heat shock factor 1 promotes invasion and metastasis of hepatocellular carcinoma in vitro and in vivo. *Cancer* **118**(7): 1782–1794.
- Green AR, Powe DG, Rakha EA, Soria D, Lemetre C, Nolan CC, Barros FF, Macmillan RD, Garibaldi JM, Ball GR, Ellis IO (2013) Identification of key clinical phenotypes of breast cancer using a reduced panel of protein biomarkers. *Br J Cancer* **109**(7): 1886–1894.
- Guertin MJ, Lis JT (2010) Chromatin landscape dictates HSF binding to target DNA elements. *PLoS Genet* **6**(9): e1001114.
- Jin X, Moskophidis D, Mivechi NF (2011) Heat shock transcription factor 1 is a key determinant of HCC development by regulating hepatic steatosis and metabolic syndrome. *Cell Metab* **14**(1): 91–103.
- Kandath C, Schultz N, Cherniack AD, Akbani R, Liu Y, Shen H, Robertson AG, Pashtan I, Shen R, Benz CC, Yau C, Laird PW, Ding L, Zhang W, Mills GB, Kucherlapati R, Mardis ER, Levine DA (2013) Integrated genomic characterization of endometrial carcinoma. *Nature* **497**(7447): 67–73.
- Khaleque MA, Bharti A, Gong J, Gray PJ, Sachdev V, Ciocca DR, Stati A, Fanelli M, Calderwood SK (2008) Heat shock factor 1 represses estrogen-dependent transcription through association with MTA1. *Oncogene* **27**(13): 1886–1893.
- Khalil AA, Kabapy NF, Deraz SF, Smith C (2011) Heat shock proteins in oncology: diagnostic biomarkers or therapeutic targets? *Biochim Biophys Acta* **1816**(2): 89–104.
- Kim YS, Alarcon SV, Lee S, Lee MJ, Giaccone G, Neckers L, Trepel JB (2009) Update on Hsp90 inhibitors in clinical trial. *Curr Top Med Chem* **9**(15): 1479–1492.
- Lamb J, Crawford ED, Peck D, Modell JW, Blat IC, Wrobel MJ, Lerner J, Brunet JP, Subramanian A, Ross KN, Reich M, Hieronymus H, Wei G, Armstrong SA, Haggarty SJ, Clemons PA, Wei R, Carr SA, Lander ES, Golub TR (2006) The Connectivity Map: using gene-expression signatures to connect small molecules, genes, and disease. *Science* **313**(5795): 1929–1935.
- Mendillo ML, Santagata S, Koeva M, Bell GW, Hu R, Tamimi RM, Fraenkel E, Ince TA, Whitesell L, Lindquist S (2012) HSF1 drives a transcriptional program distinct from heat shock to support highly malignant human cancers. *Cell* **150**(3): 549–562.
- Neckers L, Workman P (2012) Hsp90 molecular chaperone inhibitors: are we there yet? *Clin Cancer Res* **18**(1): 64–76.
- Page TJ, Sikder D, Yang L, Pluta L, Wolfinger RD, Kodadek T, Thomas RS (2006) Genome-wide analysis of human HSF1 signaling reveals a transcriptional program linked to cellular adaptation and survival. *Mol Biosyst* **2**(12): 627–639.
- Rabindran SK, Giorgi G, Clos J, Wu C (1991) Molecular cloning and expression of a human heat shock factor, HSF1. *Proc Natl Acad Sci USA* **88**(16): 6906–6910.
- Salvesen HB, Carter SL, Mannelqvist M, Dutt A, Getz G, Stefansson IM, Raeder MB, Sos ML, Engelsen IB, Trovik J, Wik E, Greulich H, Bo TH, Jonassen I, Thomas RK, Zander T, Garraway LA, Oyan AM, Sellers WR, Kalland KH, Meyerson M, Akslen LA, Beroukheim R (2009) Integrated genomic profiling of endometrial carcinoma associates aggressive tumors with indicators of PI3 kinase activation. *Proc Natl Acad Sci USA* **106**(12): 4834–4839.
- Salvesen HB, Haldorsen IS, Trovik J (2012) Markers for individualised therapy in endometrial carcinoma. *Lancet Oncol* **13**(8): e353–e361.
- Santagata S, Hu R, Lin NU, Mendillo ML, Collins LC, Hankinson SE, Schnitt SJ, Whitesell L, Tamimi RM, Lindquist S, Ince TA (2011) High levels of nuclear heat-shock factor 1 (HSF1) are associated with poor prognosis in breast cancer. *Proc Natl Acad Sci USA* **108**(45): 18378–18383.
- Santagata S, Mendillo ML, Tang YC, Subramanian A, Perley CC, Roche SP, Wong B, Narayan R, Kwon H, Koeva M, Amon A, Golub TR, Porco Jr JA, Whitesell L, Lindquist S (2013) Tight coordination of protein translation and HSF1 activation supports the anabolic malignant state. *Science* **341**(6143): 1238303.
- Scott KL, Nogueira C, Heffernan TP, van Doorn R, Dhakal S, Hanna JA, Min C, Jaskelioff M, Xiao Y, Wu CJ, Cameron LA, Perry SR, Zeid R, Feinberg T, Kim M, Vande Woude G, Granter SR, Bosenberg M, Chu GC, DePinho RA, Rimm DL, Chin L (2011) Proinvasion metastasis drivers in early-stage melanoma are oncogenes. *Cancer Cell* **20**(1): 92–103.
- Stefansson IM, Salvesen HB, Akslen LA (2004) Prognostic impact of alterations in P-cadherin expression and related cell adhesion markers in endometrial cancer. *J Clin Oncol* **22**(7): 1242–1252.
- Wiederrecht G, Seto D, Parker CS (1988) Isolation of the gene encoding the *S. cerevisiae* heat shock transcription factor. *Cell* **54**(6): 841–853.
- Wik E, Raeder MB, Krakstad C, Trovik J, Birkeland E, Hoivik EA, Mjos S, Werner HM, Mannelqvist M, Stefansson IM, Oyan AM, Kalland KH, Akslen LA, Salvesen HB (2013) Lack of estrogen receptor-alpha is associated with epithelial-mesenchymal transition and PI3K alterations in endometrial carcinoma. *Clin Cancer Res* **19**(5): 1094–1105.
- Xiao X, Zuo X, Davis AA, McMillan DR, Curry BB, Richardson JA, Benjamin IJ (1999) HSF1 is required for extra-embryonic development, postnatal growth and protection during inflammatory responses in mice. *EMBO J* **18**(21): 5943–5952.

This work is published under the standard license to publish agreement. After 12 months the work will become freely available and the license terms will switch to a Creative Commons Attribution-NonCommercial-Share Alike 3.0 Unported License.

Supplementary Information accompanies this paper on British Journal of Cancer website (<http://www.nature.com/bjc>)