



Correction

Correction: Clonality-Climate Relationships along Latitudinal Gradient across China: Adaptation of Clonality to Environments

The *PLOS ONE* Staff

Figure 2 is missing subplot labels that correspond to the figure legend. The author has provided a corrected copy here.

Citation: The *PLOS ONE* Staff (2014) Correction: Clonality-Climate Relationships along Latitudinal Gradient across China: Adaptation of Clonality to Environments. *PLoS ONE* 9(7): e103175. doi:10.1371/journal.pone.0103175

Published: July 15, 2014

Copyright: © 2014 The *PLOS ONE* Staff. This is an open-access article distributed under the terms of the Creative Commons Attribution License, which permits unrestricted use, distribution, and reproduction in any medium, provided the original author and source are credited.

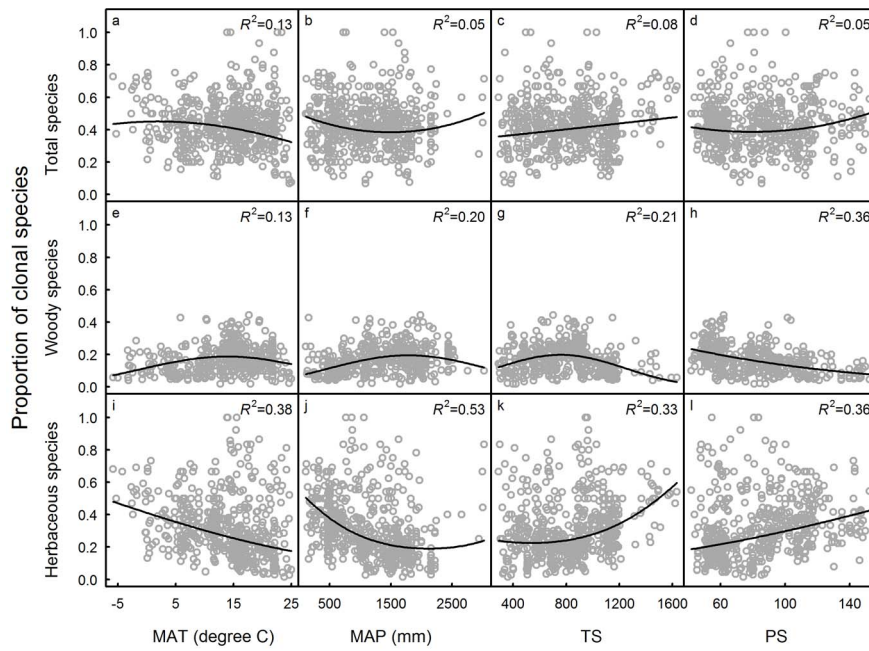


Figure 2. Relationships between proportion of clonal species and climatic variables (MAT: mean annual temperature, MAP: mean annual precipitation, TS: temperature seasonality and PS: precipitation seasonality). a–d: proportion of all clonal species vs climatic variables; e–h: proportion of woody clonal species vs climatic variables; i–l: proportion of herbaceous clonal species vs climatic variables. doi:10.1371/journal.pone.0094009.g002

Reference

1. Ye D, Hu Y, Song M, Pan X, Xie X, et al. (2014) Clonality-Climate Relationships along Latitudinal Gradient across China: Adaptation of Clonality to Environments. PLoS ONE 9(4): e94009. doi:10.1371/journal.pone.0094009