



Optogenetic insights on the relationship between anxiety-related behaviors and social deficits

Stephen A. Allsop^{1,2}, Caitlin M. Vander Weele¹, Romy Wichmann¹ and Kay M. Tye^{1*}

¹ Department of Brain and Cognitive Sciences, Picower Institute for Learning and Memory, Massachusetts Institute of Technology, Cambridge, MA, USA

² Harvard Medical School, Harvard University, Boston, MA, USA

Edited by:

Mazen A. Kheirbek, Columbia University, USA

Reviewed by:

Catherine Belzung, Université François Rabelais, France
Ekaterina Likhtik, Columbia University, USA

*Correspondence:

Kay M. Tye, Department of Brain and Cognitive Sciences, Picower Institute for Learning and Memory, Massachusetts Institute of Technology, 77 Massachusetts Avenue, Building Room 46-6263, Cambridge, MA 02139, USA
e-mail: kaytye@mit.edu

Many psychiatric illnesses are characterized by deficits in the social domain. For example, there is a high rate of co-morbidity between autism spectrum disorders and anxiety disorders. However, the common neural circuit mechanisms by which social deficits and other psychiatric disease states, such as anxiety, are co-expressed remains unclear. Here, we review optogenetic investigations of neural circuits in animal models of anxiety-related behaviors and social behaviors and discuss the important role of the amygdala in mediating aspects of these behaviors. In particular, we focus on recent evidence that projections from the basolateral amygdala (BLA) to the ventral hippocampus (vHPC) modulate anxiety-related behaviors and also alter social interaction. Understanding how this circuit influences both social behavior and anxiety may provide a mechanistic explanation for the pathogenesis of social anxiety disorder, as well as the prevalence of patients co-diagnosed with autism spectrum disorders and anxiety disorders. Furthermore, elucidating how circuits that modulate social behavior also mediate other complex emotional states will lead to a better understanding of the underlying mechanisms by which social deficits are expressed in psychiatric disease.

Keywords: anxiety, social deficits, optogenetics, basolateral amygdala, ventral hippocampus, mouse models of affective disorders, social interaction, autism

SOCIAL DEFICITS IN PSYCHIATRIC DISEASE

Social deficits have emerged as one of the major symptoms observed in many psychiatric diseases including schizophrenia, depression, anxiety, obsessive compulsive disorder, and Fragile X (Kennedy and Adolphs, 2012; American Psychiatric Association, 2013; Derntl and Habel, 2013). In addition, some diseases, such as autism and social anxiety disorder, are primarily characterized by deficits in the social domain (Stein and Stein, 2008; Losh et al., 2009; Kennedy and Adolphs, 2012). While impairments in social function are found in a variety of psychiatric disorders (Ormel et al., 1993; Wohlfarth et al., 1993; American Psychiatric Association, 2013), the prevalence of social anxiety disorder and the high rate of co-morbidity between anxiety and autism spectrum disorders highlights the need to understand the relationship between anxiety and social behavior (De Bruin et al., 2007; Simonoff et al., 2008; Stein and Stein, 2008). As a result, in this review we focus on anxiety and its link to deficits in social behaviors. For a more extensive discussion on how social function is affected in psychiatric disease see the review by Kennedy and Adolphs (2012).

Anxiety is characterized as a heightened state of arousal and vigilance that occurs in the absence of an immediate threat (Davis et al., 2009). Although it may have evolved as an adaptive behavioral state, anxiety can become pathological when it is no longer an appropriate response to a given situation (American Psychiatric Association, 2013). Anxiety can be conceptualized as having two components, state anxiety and trait anxiety. Whereas trait anxiety refers to an individual's personality and

predisposition for anxiety, state anxiety refers to the emotional response generated by a perceived threat (Spielberger et al., 1983; Endler and Kocovski, 2001). Clinically, general anxiety disorder is characterized by excessive and uncontrollable anxiety as a result of non-threatening stimuli, accompanied by defined physiological symptoms that cause serious distress or impairment that must not be caused by another psychiatric or medical disorder (Fricchione, 2004; Hoge et al., 2012; American Psychiatric Association, 2013). Although it is implicit in the diagnosis of anxiety disorders that patients likely have an increase in state and trait anxiety, this is not usually directly assessed. As a result, in this review we refrain from using those terms when discussing clinical findings.

In patients with general anxiety, social function is significantly affected and has been found to be an important cause for disability when comparing anxious patients to controls (Schonfeld et al., 1997; Kessler et al., 1999; Kroenke et al., 2007). In young adults with anxiety, these deficits may be even more detrimental because they occur during a period vital for social development (Wittchen et al., 1998). Aside from the impairments and disability in the social domain that occur with generalized anxiety, anxiety itself can be limited to social functioning—which is exemplified in social anxiety disorder. To be diagnosed with social anxiety disorder, a patient must suffer from significant distress or impairment that interferes with ordinary routine in social settings, at work or school, or during everyday activities (American Psychiatric Association, 2013). Individuals with social anxiety disorder avoid interpersonal interactions whenever possible. If they must endure one, it is with extreme

emotional and physical discomfort (Schneier, 2006; Stein and Stein, 2008).

The lack of specific pharmacological treatments for neuropsychiatric diseases such as social anxiety disorder and autism points to a need for a greater understanding of the neural mechanisms that mediate social behaviors and how they are affected by anxiety-related illnesses. Current pharmacological treatment approaches for social anxiety disorder and autism spectrum disorders utilize drugs which are also used to treat other psychiatric disorders (e.g., anxiety and depression) (Gordon et al., 1993; Stein et al., 1998; Fedoroff and Taylor, 2001; Malone et al., 2002; Rodebaugh et al., 2004). In addition, treatments for autism are often ineffective at treating social pathologies (McDougle et al., 2005; but see Hollander et al., 2007; Andari et al., 2010). These data call for a better understanding of the neural correlates underlying these disorders.

OPTOGENETICS AND THE USE OF ANIMAL MODELS TO STUDY PSYCHIATRIC DISEASE

Experimental approaches in human subjects have yielded significant insights about brain regions involved in anxiety (Etkin and Wager, 2007; Ressler and Mayberg, 2007) and social behavior (Adolphs, 2003; Lieberman, 2007). However, there are considerable ethical and technological limitations to using humans as experimental subjects [Council for International Organizations of Medical Sciences, 2002; Institute of Medicine (US) Forum on Neuroscience and Nervous System, 2008]. Establishing causal relationships between specific neuropsychiatric symptoms and precise brain mechanisms requires invasive techniques that are not suitable for human subjects. In addition, the expense of drug development for psychiatric disorders dictates that drug targets are validated in more economical systems prior to being tested in humans (Frantz, 2004).

Animal models are one important means to address the limitations of human neuroscience research (Cryan and Holmes, 2005; Nestler and Hyman, 2010). Animal models enable more invasive methodologies and the application of new technologies in order to provide information about the basic mechanisms involved in driving behavior (Nestler and Hyman, 2010; Aston-Jones and Deisseroth, 2013; Cruz et al., 2013; Kim et al., 2013b). One such technology is optogenetics. Optogenetics involves the integration of light-sensitive proteins, called “opsins,” into cell membranes allowing for millisecond temporal control of cellular activity by photostimulation (Boyden et al., 2005; Fenno et al., 2011). The most commonly used light-sensitive opsins are channelrhodopsins (ChRs), halorhodopsins (NpHRs), and Archaeorhodopsins (Archs) (Soliman and Trüper, 1982; Mukohata et al., 1988; Nagel et al., 2002, 2003; Zhang et al., 2007a,b). ChRs are a class of cation channels that, when exposed to blue light, cause the depolarization of neuronal membranes where opsins are expressed and results in neuronal excitability (Nagel et al., 2003; Boyden et al., 2005). In contrast, NpHRs are chloride pumps and Archs are proton pumps that, when exposed to yellow light, cause the hyperpolarization of neuronal membranes and results in subsequent inhibition (Zhang et al., 2007a,b; Chow et al., 2010; Gradinaru et al., 2010). Through various targeting strategies, optogenetics allows a high level of spatial and temporal

control of specific, molecularly defined neuronal circuits (Tye and Deisseroth, 2012). Importantly, optogenetics has been successfully used to elucidate neuronal circuits involved in many complex behaviors relevant to rodent models of psychiatric disease (Nieh et al., 2013; Deisseroth, 2014).

However, whether it is possible to model psychiatric disease in animals is controversial. For instance, some diagnostic features of psychiatric diseases include terms such as sadness, guilt, delusions, and disorganized thinking (American Psychiatric Association, 2013). These symptoms are difficult to ascertain in animal models. In addition, the variability in clinical presentation of psychiatric diseases makes modeling emotional disease states in animals a challenge. Nevertheless, scientists have been able to successfully create models that recapitulate important features of various psychiatric diseases such as anxiety (Lister, 1990; Lang et al., 2000), depression (Willner, 1984; Castagné et al., 2001), and autism (Lewis et al., 2007; Ting and Feng, 2011).

USING ANIMAL MODELS TO UNDERSTAND ANXIETY AND SOCIAL BEHAVIOR

Neuroscientists have made significant strides toward understanding the neural mechanisms of anxiety (Shin and Liberzon, 2009; Dias et al., 2013). Rodent models of anxiety have been a useful tool in this regard as they have been shown to have both face validity and predictive validity (Lister, 1990; Cryan and Holmes, 2005) and have led to mechanistic and potential therapeutic insights (Cryan et al., 2003; Holmes et al., 2003; Rudolph and Möhler, 2004). In order to study anxiety-like behaviors in rodents, a variety of tests and strategies have been employed. The three main strategies involve ethological or conflict-based tests, classical conditioning tests, and genetic models (Lister, 1990; Cryan and Holmes, 2005). Ethological/conflict-based tests rely on unconditioned responses based on innate behaviors while classical conditioning tests rely on learned responses to experimental conditions. Finally, genetic models rely on specific gene manipulations leading to different levels of “trait” anxiety. This has led to the discovery of a number of promising cellular mechanisms involved in anxiety-related behaviors (Kent et al., 2002; Wu et al., 2008; Johansen et al., 2011). However, it should be noted that in rodents, the tests used to assess “trait” anxiety are the same ones utilized to assess “state” anxiety [i.e., elevated plus maze (EPM), open field test (OFT)], thus it is difficult to dissociate whether genetic mouse models have truly increased trait anxiety or excessive state anxiety to the tested context (Lister, 1990; Cryan and Holmes, 2005).

Thorough explanations of the tests used to study anxiety-like behaviors in rodents have been presented in previous literature (Lister, 1990; Rodgers, 1997; Finn et al., 2003; Fuchs and Flugge, 2006; Cryan and Sweeney, 2011; Campos et al., 2013; Kumar et al., 2013). As such, we will not discuss them in detail here (For an overview of the most commonly used tests, see **Table 1**).

The combination of these well-established tests with recent advances in optogenetics (Fenno et al., 2011; Tye and Deisseroth, 2012; Deisseroth, 2014) has highlighted the importance of combining these established behavioral models with new technology to uncover the mechanistic basis of anxiety disorders. In fact, various groups have employed tests such as the EPM and OFT

Table 1 | Tests used to assess anxiety as well as social behavior in rodents.

Tests and models	Behavioral test	Brief description	Used in optogenetic studies
Ethological tests (based on approach-avoidance conflict)	Elevated plus maze	An elevated, plus-shaped apparatus composed of 2 enclosed arms opposed by 2 open arms (Pellow et al., 1985)	Tye et al., 2011; Yizhar et al., 2011; Felix-Ortiz et al., 2013; Kheirbek et al., 2013; Kim et al., 2013a; Jennings et al., 2013; Gunaydin et al., 2014
	Elevated zero maze	An elevated, circular runway that alternates open, brightly lit areas with enclosed, dark areas (Shepherd et al., 1994)	Kim et al., 2013c
	Elevated alley (Suok test)	An elevated beam or alley Modifiable by illumination of one half (Kalueff and Tuohimaa, 2005)	
	Open field	Novel, relatively lit square arena divided into peripheral and central units (Hall and Ballachey, 1932)	Tye et al., 2011; Felix-Ortiz et al., 2013; Jennings et al., 2013; Kheirbek et al., 2013; Kim et al., 2013a,c; Anthony et al., 2014; Gunaydin et al., 2014
	Light-dark box	Box with 2 different compartments: protected (dark) and unprotected (lit) (Lorenzini et al., 1984)	Kim et al., 2013a; Anthony et al., 2014
	Staircase	Enclosed staircase, number of steps climbed and rearing behavior is measured (Simiand et al., 1984)	
	Hole board	A square arena with a number of holes in the floor that can be explored (File and Wardill, 1975)	
Active avoidance based	Marble burying	Novel cage containing certain number of novel marbles (Broekkamp et al., 1986)	
	Shock probe burying	Novel cage containing an electric shock probe (Pinel and Treit, 1983)	
Hyperneophagia	Novelty suppressed feeding	Food-deprived animals are exposed to a box with a sawdust-covered floor, a central platform holding a single pellet of chow, and focused lighting (Dulawa and Hen, 2005)	Felix-Ortiz et al., 2013
Environmental models	Maternal deprivation	Pups will be removed from the mother for brief periods of time preweaning (Plaut, 1972)	
	Social Isolation Rearing	After weaning of pups, animals are housed individually for the rest of the experimental period (Reynolds, 1963)	
Miscellaneous	Ultrasonic vocalization	Pups are separated from their mother and the frequency of ultrasonic vocalizations is recorded (Gardner, 1985)	
Social interaction	Home cage social interaction (juvenile intruder paradigm)	A novel juvenile mouse is introduced into the home cage of a single experimental mouse and allowed to explore freely for 3 min (Winslow, 2003)	Yizhar et al., 2011; Felix-Ortiz and Tye, 2014; Gunaydin et al., 2014
	3-Chamber sociability (Crawley's test)	A box divided into 3 compartments providing indirect contact to 1 or 2 novel mice confined in a holding cage (Moy et al., 2004)	Yizhar et al., 2011; Felix-Ortiz and Tye, 2014; Gunaydin et al., 2014; Heydendaal et al., 2014

Table focuses on non-aggressive, non-mating social assays.

to highlight the causal role of various circuits in modulating anxiety-like behaviors in mice (Tye et al., 2011; Yizhar et al., 2011; Felix-Ortiz et al., 2013; Jennings et al., 2013; Kim et al., 2013a,c; Kheirbek et al., 2013; Anthony et al., 2014; Heyndael et al., 2014; Gunaydin et al., 2014) (see **Figure 1**). In these assays, the temporal precision of optogenetics is underscored by allowing for within-subject and within-session comparisons.

Just as in anxiety, animal models have also been a useful tool for scientific inquiry into the brain regions, connections, and signaling involved in social function (Cacioppo, 2002; Insel and Fernald, 2004; Crawley, 2007; Adolphs, 2009; Silverman et al., 2010). Many animals are known to display a wide array of social behaviors that can be assayed in a laboratory setting (Hau et al., 2002). For example, *Caenorhabditis elegans* and *Drosophila melanogaster* have been successfully used to study the genetic basis of social behaviors such as aggregation, mating, and aggression (Antony and Jallon, 1982; Liu and Sternberg, 1995; Lee and Hall, 2000; Srinivasan et al., 2008; Macosko et al., 2009). For a synopsis of insights provided by the rich genetic toolkits of these model organisms, refer to the review by Sokolowski (2010).

Various studies have utilized the social behaviors found in rodents to find neural substrates of innate behaviors like aggression and mating (Choi et al., 2005; Lin et al., 2011; Anderson, 2012). Others have made strides in understanding the basis of behaviors such as emotional contagion, empathic responses, and observational learning in rodents (Jeon et al., 2010; Atsak et al., 2011; Bartal et al., 2011). Social behavior has also been studied extensively in non-human primates (Brown and Schafer, 1888; De Waal and Suchak, 2010). Primates exhibit a very complex set of social behaviors including the formation of long-term alliances and “friendships” that lead to social interactions and hierarchies that closely resemble human social structures (Cheney et al., 1986; Whiten et al., 1999; Adolphs, 2009).

Another important animal model for studying social behavior is the prairie vole. Prairie voles maintain long-term social attachments after mating, known as a pair bond (Getz et al., 1981; Carter et al., 1995; Wang and Aragona, 2004; Young and Wang, 2004) and thus serve as an appropriate analog to the type of social bonds observed in humans (Cacioppo, 2002; Insel and Fernald, 2004; Adolphs, 2009). To date, anatomical and pharmacological techniques have been used in combination with behavioral

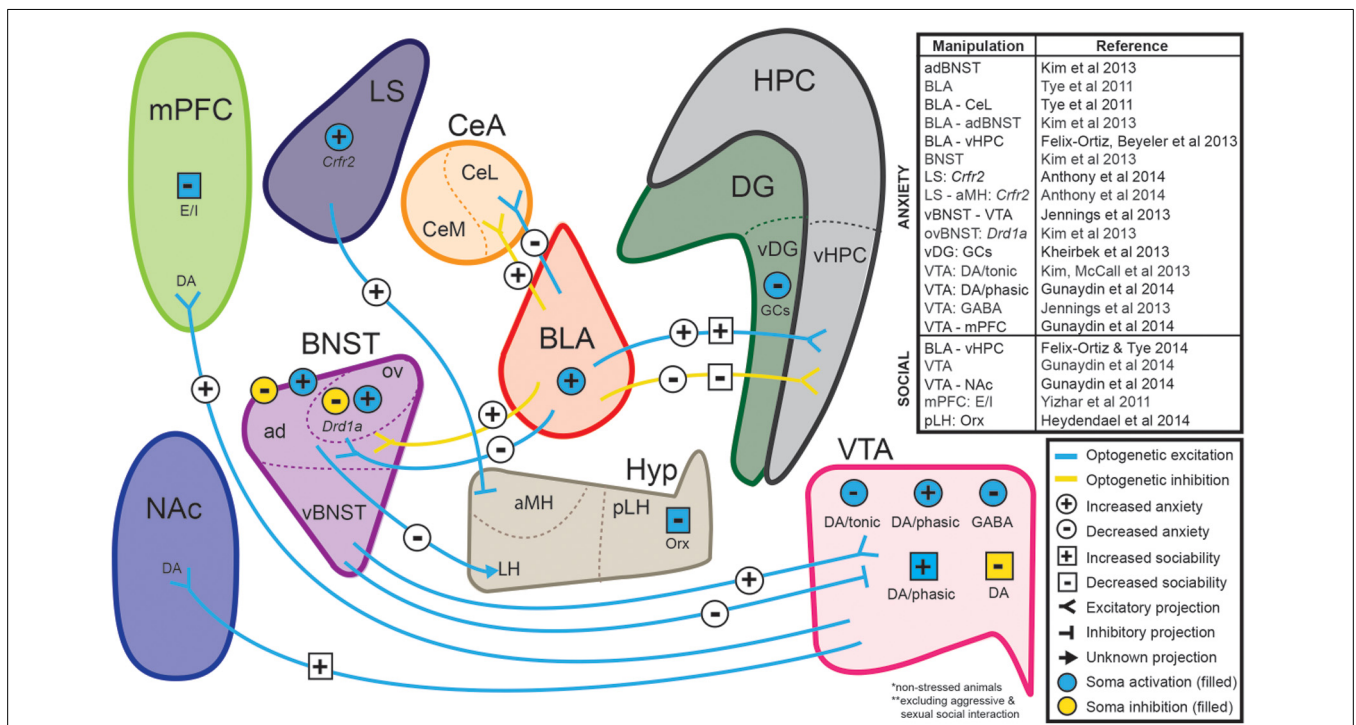


FIGURE 1 | Neural circuits implicated in anxiety and social function through optogenetic investigations. The ability to selectively manipulate distinct neuronal populations and projections with high temporal resolution is a significant advantage of optogenetic approaches. Several recent studies have used optogenetic strategies to establish causal relationships between specific neuronal projections and behaviors relevant to anxiety and sociability in non-stressed animals. Abbreviations: ad, anterodorsal subdivision of the bed nucleus of the stria terminalis; aMH, anterior hypothalamic area of the medial hypothalamus; CeA, central amygdala; *Crrf2*, type-2 corticotropin-releasing factor receptor; BLA, basolateral amygdala; BNST, bed nucleus of the stria terminalis; DA,

dopaminergic neurons; DG, dentate gyrus; *Drd1a*, dopamine receptor 1a; E/I, manipulation of excitatory/inhibitory balance; GABA, GABAergic neurons; GCs, granule cells; HPC, hippocampus; Hyp, hypothalamus; LH, lateral hypothalamus; LS, lateral septum; mPFC, medial prefrontal cortex; NAc, nucleus accumbens; Orx, orexin neurons; ov, oval nucleus of the bed nucleus of the stria terminalis; pLH, posterior lateral hypothalamus; vBNST, ventral subdivision of the bed nucleus of the stria terminalis; vDG, ventral dentate gyrus; vHPC, ventral hippocampus; VTA, ventral tegmental area. (For review of optogenetic investigations into the neural circuitry involved in aggression and sexual behavior, we refer readers to Anderson, 2012).

assays of pair bonding in prairie voles to reveal the importance of oxytocin, vasopressin, dopamine, and opioids in selective social attachment (Insel and Hulihan, 1995; Cho et al., 1999; Aragona et al., 2003, 2006; Resendez et al., 2012).

Just as with anxiety, optogenetics offers a great opportunity to begin elucidating the circuits involved in social behavior. Various optogenetic manipulations have provided recent evidence about the neural basis for a number of different rodent social behaviors (Gunaydin et al., 2014; Reviewed by Anderson, 2012; Yizhar, 2012) and application of optogenetic approaches to models such as the prairie vole holds great promise for future insight into the neurobiology of social attachments and behavior.

EXPERIMENTAL/BEHAVIORAL EVIDENCE OF A CORRELATION BETWEEN GENERAL ANXIETY AND SOCIAL DYSFUNCTION

From clinical data, there seems to be a significant link between anxiety and impaired social interaction. Considering the body of experimental evidence on anxiety and social interaction, there is compelling evidence to support a correlation between anxiety and impaired social interaction [Although there is a wide range of social animal behavior, here we focus on non-aggressive, non-sexual, reciprocal social interaction (For overview see **Table 1**)]. This relationship may provide clues for understanding the mechanism by which co-expression of anxiety and social deficits arise.

Human studies have shown that anxiety disorders are common in individuals with autism. For example, in a side-by-side comparison, children with high-functioning autism have higher levels of reported anxiety than controls without autism (Muris et al., 1998; Gillott et al., 2001; MacNeil et al., 2009; White et al., 2009). Likewise, youth with anxiety disorders have higher scores on the autism spectrum disorder symptom scale than healthy controls (Pine et al., 2008). In patients with Williams Syndrome, social dysfunction increases as anxiety levels increase (Riby, 2013). Further, pharmacological studies have shown that benzodiazepines, commonly prescribed for generalized anxiety, have also been used as treatments for social anxiety disorder (Davidson et al., 1993; Jefferson et al., 2001; Schneier, 2006). Additionally, selective serotonin reuptake inhibitors (SSRIs), which increase serotonin concentration, have been shown to have enhancing effects on complex social behaviors (Knutson et al., 1998; Harmer, 2002) and have been used for treating general anxiety disorder as well as social anxiety disorder (Stein et al., 1998; Van der Linden et al., 2000; Rickels et al., 2003). Lastly, oxytocin, a neuropeptide well-known for its role in enhancing social function (Domes et al., 2007; Guastella et al., 2008; Meyer-Lindenberg et al., 2011), also carries anxiolytic properties (Labuschagne et al., 2010; Missig et al., 2010). These studies suggest there may be some common neural mechanisms underlying anxiety and social behavior in humans.

Animal studies also support the same relationship between anxiety and impaired social function. Early rodent studies showed that anxiolytics prevent decreases in social interaction that occur when animals are placed in anxiogenic environments (i.e., novel environments, bright light) (File et al., 1976; File and Hyde, 1978; File and Seth, 2003). Further, various autistic mouse models exhibit both pronounced deficits in sociability as well as






enhanced anxiety-like behaviors (Nakatani et al., 2009; Silverman et al., 2010; Peça et al., 2011). In line with human literature, serotonin activity in rodents mediates social behaviors such as aggression and social reward (Saudou et al., 1994; Dölen et al., 2013), while reduced serotonin signaling increases anxiety (Heisler et al., 1998; Ramboz et al., 1998; Gross et al., 2002; Akimova et al., 2009). Lastly, oxytocin appears to facilitate social behaviors (Donaldson and Young, 2008; Insel, 2010; Lukas et al., 2011; Meyer-Lindenberg et al., 2011) and attenuate anxiety-related behaviors in rodents (Amico et al., 2004; Insel, 2010; Viviani et al., 2011; Knobloch et al., 2012) (See **Table 2** for summary). These studies further demonstrate that anxiety and social function are intimately linked and suggest that pathologies in the respective domains may share a common neural mechanism.

Although there is evidence that increased anxiety is correlated with deficits in social function, there are several caveats. For example, in Williams syndrome, there is a tendency to engage in “pro-social,” friendly behavior despite these patients exhibiting increased anxiety (Porter et al., 2009; Stinton et al., 2010; Riby et al., 2013). This finding may be explained by observations that although patients afflicted with Williams syndrome appear to be highly social, they often have abnormal social cognition that can lead to serious deficits in appropriate social interaction (Bellugi et al., 2000; Meyer-Lindenberg et al., 2005; Riby et al., 2013). Another finding at odds with the trend discussed above is that the neuropeptide vasopressin, well-known for its positive influence on social behavior, has also been shown to be anxiogenic in both humans and rodents (Bielsky et al., 2004; Thompson et al., 2006; Bosch and Neumann, 2008; Donaldson and Young, 2008; Simon et al., 2008; Tobin et al., 2010; Neumann and Landgraf, 2012). Lastly, some autistic mouse models contain deficits in social interaction but show no changes in anxiety-like behaviors (McFarlane et al., 2008; Liu and Smith, 2009). These are a few examples that highlight the fact that although anxiety and social dysfunction are often co-expressed, there are exceptions. Importantly, the expression of behaviors relevant to anxiety and social interaction encompasses a wide array of behaviors. Therefore, it is possible that certain subsets of these behaviors share the same neural machinery, while others may not.

THE AMYGDALA AND ITS ROLE IN ANXIETY AND SOCIAL BEHAVIOR

We can begin to understand the connection between anxiety and social behavior by identifying neural substrates that mediate both behaviors. The amygdala is one such region. Initial work elucidating the amygdala's role in fear and anxiety was the observation that bilateral destruction of the amygdala results in attenuated fear (Klüver and Bucy, 1939). Since then, human studies have consistently shown that the amygdala is involved in processing emotional faces, particularly those involving fearful or threatening expressions (Adolphs et al., 1994; Morris et al., 1996; Rauch et al., 2003; Etkin et al., 2004). It has also been shown that patients suffering from anxiety show enhanced amygdala activation to emotional face stimuli when compared to controls and that the degree of activation correlates with the severity of their pathology (Etkin and Wager, 2007; Stein et al., 2007). Further, high anxiety has been shown to be associated with increased amygdala volume

Table 2 | Human and animal data supports a correlation between social dysfunction and anxiety.

	Social function	Anxiety	References
General anxiety disorder			Ormel et al., 1993; Wohlfarth et al., 1993; Fricchione, 2004; Pine et al., 2008; Hoge et al., 2012
Social anxiety disorder			Liebowitz et al., 1985; Schneier, 2006; Stein and Stein, 2008; American Psychiatric Association, 2013
Autism			Mundy et al., 1986; Baron-Cohen et al., 1999; Gillott et al., 2001; Dawson et al., 2004; MacNeil et al., 2009; White et al., 2009
Anxiolytics			File and Hyde, 1978; Davidson et al., 1993; Shader and Greenblatt, 1993; Jefferson et al., 2001
Serotonin			Knutson et al., 1998; Ramboz et al., 1998; Harmer, 2002; Rickels et al., 2003; Dölen et al., 2013
Oxytocin			Domes et al., 2007; Blume et al., 2008; Donaldson and Young, 2008; Guastella et al., 2008; Labuschagne et al., 2010; Missig et al., 2010
Vasopressin			Bielsky et al., 2004; Thompson et al., 2006; Bosch and Neumann, 2008; Simon et al., 2008; Tobin et al., 2010; Neumann and Landgraf, 2012

Experimental manipulations and diseases that lead to increases in anxiety tend to also lead to decreases in social function. Similarly, conditions that lead to increases in social function tend to also lead to anxiolysis. A notable exception to this trend is Vasopressin. References are color coded to indicate whether they refer to social function (pink), anxiety (gray), or both.

and connectivity (Qin et al., 2014). Animal models have also been used to show the role of the amygdala in anxiety-related behaviors (Davis, 1992; Roozendaal et al., 2009). Concordant with human data, amygdala lesions in animals reduce anxiety-related behaviors (Amaral, 2002; Kalin et al., 2004). Lastly, recent optogenetic manipulations of the amygdala were shown to have an acute effect on anxiety-related behaviors (Tye et al., 2011; Felix-Ortiz et al., 2013; Kim et al., 2013a).

Along with its role in anxiety, the amygdala's role in social behavior has also been well-established (Brown and Schafer, 1888; Klüver and Bucy, 1937; Jonason and Enloe, 1971; Kling and Steklis, 1976; Amaral et al., 2003; Adolphs, 2010). Diseases such as autism, Urbach-Wiethe disease, Kluver-Bucy syndrome, and Williams syndrome have provided clues regarding the involvement of the amygdala in social behavior as amygdala damage or dysfunction appears to precipitate aberrant sociality in these diseases (Baron-Cohen et al., 2000; Meyer-Lindenberg et al., 2005; Todd and Anderson, 2009; Adolphs, 2010; Haas et al., 2010). In support of the notion that the amygdala plays a role in social functioning, it has also been found that higher amygdala volume and stronger intrinsic connectivity is correlated with having a larger, more complex social network (Bickart et al., 2011, 2012). In animals, amygdala lesions also result in changes in social behavior (Rosvold et al., 1954; Emery et al., 2001; Amaral et al., 2003; Machado and Bachevalier, 2006; Machado et al., 2008;

Adolphs, 2010; Bliss-Moreau et al., 2013). These studies strongly suggest that amygdala circuitry may be involved in mediating aspects of anxiety and social function and that pathology in these domains may arise from a common, aberrant pathway involving the amygdala.

OPTOGENETIC INVESTIGATION OF THE AMYGDALA AND HIPPOCAMPUS

The amygdala is composed of functionally and anatomically distinct subnuclei that include the basolateral amygdala (BLA) and the central amygdala (CeA) (McDonald, 1982a,b; Pape and Pare, 2010). The CeA can be further subdivided into medial (CeM) and lateral (CeL) subnuclei (McDonald, 1982a,b; Sah et al., 2003). Selective manipulation of these various subnuclei using optogenetics has revealed that specific regions have distinct roles in controlling behavior (Ciocchi et al., 2010; Haubensak et al., 2010). For example, Ciocchi and colleagues demonstrated that CeM activation as well as CeL inhibition caused unconditioned freezing, an innate behavioral fear response in rodents (Ciocchi et al., 2010). Amygdala subnuclei not only have distinct functions, they are also intricately connected. The BLA is glutamatergic and sends projections to the CeA, a GABAergic nucleus (Paré and Smith, 1993; Pape and Pare, 2010). Within the CeA, the CeL sends inhibitory projections to the main output nucleus of the amygdala, the CeM (Krettek and Price, 1978). Optogenetics

allows for projection-specific manipulations (Stuber et al., 2011; Tye et al., 2011; Tye and Deisseroth, 2012) and because of this technological advantage, researchers are able to examine the distinct role of specific circuits in governing different aspects of behavior. For example, Tye and colleagues showed that the BLA-CeL projections bidirectionally control anxiety-related behaviors (Tye et al., 2011). Interestingly, manipulations of this specific circuit had the opposite effect to manipulations of the BLA as a whole (Tye et al., 2011). This study established the importance of using optogenetics to dissect the functional roles of specific projections.

The amygdala is connected to a number of downstream and upstream regions that may be candidates for circuitry involved in anxiety and social behavior (Davis, 1992; McDonald, 1998; Fendt and Fanselow, 1999; Davidson, 2002). One region of interest is the ventral hippocampus (vHPC) due to its robust and reciprocal connections with the amygdala (O'Donnell and Grace, 1995; Pikkarainen et al., 1999; Chen and Etkin, 2013) and its involvement in both anxiety and social behavior. In humans, the hippocampus and amygdala have been shown to be dependent on one another during the encoding of emotional memories (Richardson et al., 2004). Further, amygdala:hippocampal volume ratio corresponds to the severity of anxiety observed in some patients (MacMillan et al., 2003). In addition to these clues in the human literature, previous work in rodents has shown that the vHPC is important for the expression of fear- and anxiety-related behaviors (Kjelstrup et al., 2002; Bannerman et al., 2004; Kheirbek et al., 2013). Along with its role in anxiety, the vHPC is also involved in social behaviors. In non-human primates, hippocampal lesions lead to abnormal responses to social signals and degradation of social bonds (Machado and Bachevalier, 2006). Experiments using social interaction paradigms in rodents also provided evidence that the vHPC is involved in social behavior (Cadogan et al., 1994; Deacon et al., 2002; McHugh et al., 2004).

THE BLA-vHPC CIRCUIT FACILITATES ANXIETY-RELATED BEHAVIORS AND IMPAIRS SOCIAL INTERACTION

Taken together, the studies discussed above strongly suggest that the amygdala and the vHPC are both involved in mediating anxiety-related behaviors; however, the contribution of the specific connection between these two regions has been poorly understood. As demonstrated by the optogenetic manipulation of specific projections from the amygdala (Tye et al., 2011), specific projections from a brain region may encode information that cannot be gleaned from non-specific activation or inhibition of an entire brain region. Given that the non-specific activation of the BLA was anxiogenic while activation of BLA-CeL was anxiolytic, one possible explanation was that the majority of BLA neurons projected to other regions and mediated an anxiogenic phenotype. Indeed, the BLA projects to many other regions implicated in anxiety, including the medial prefrontal cortex (mPFC), bed nucleus of the stria terminalis (BNST) and the vHPC (Bishop, 2007; Etkin and Wager, 2007; Kim et al., 2013a).

To study the BLA-vHPC circuit, light-sensitive opsins were expressed in glutamatergic BLA projection neurons and an

optical fiber was positioned above BLA axon terminals within the vHPC for precise illumination. In line with hypotheses that posit amygdala hyperactivity underlies anxiety (Anagnostaras et al., 1999; Drevets, 2003; Kalin and Shelton, 2003; Carter and Krug, 2009), *in vivo* phasic light activation of ChR2-expressing BLA terminals within the vHPC transiently and significantly increased anxiety-related behaviors in the OFT, EPM, and novelty-suppressed feeding paradigm (**Figure 2**). These light-evoked anxiogenic effects were prevented by intra-vHPC glutamate antagonism, demonstrating that excitatory projections from the BLA to the vHPC are sufficient to mediate anxiety. Conversely, *in vivo* light inhibition of BLA axons in the vHPC reduced anxiety-related behaviors in the OFT and EPM (**Figure 2**) (Felix-Ortiz et al., 2013). Therefore, this study identified the BLA-vHPC as a circuit that bidirectionally governs anxiety-related behaviors in a manner opposite to that of the BLA-CeL circuit (Tye et al., 2011). Together, these data show that BLA projections to different downstream targets can have opposing roles in modulating anxiety-related behavior.

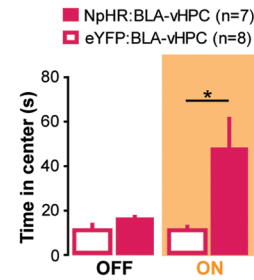
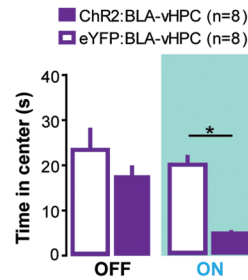
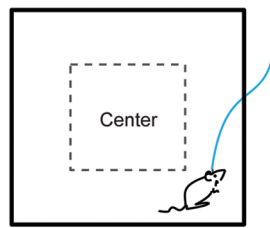
The evidence that anxiety is correlated with deficits in social interaction and that both the amygdala and hippocampus appear to be involved in both processes, prompted investigation into the role of the BLA-vHPC circuit in social behavior. Using the approach described above to target BLA terminals in the vHPC, the effects of BLA-vHPC manipulations on rodent sociability were tested during two behavioral paradigms: the juvenile-intruder test and the three-chamber sociability test. Inhibition of BLA-vHPC projections increased sociability in these two paradigms, while excitation of this pathway decreased sociability (**Figure 2**) (Felix-Ortiz and Tye, 2014). Just as in the previous study, intra-vHPC glutamate receptor antagonism attenuated the effects of optogenetic stimulation demonstrating that glutamatergic transmission from the BLA to the vHPC was critical for mediating the light-induced changes in social behavior. This study provides evidence that although complex social behaviors likely involve a distributed neural network across multiple brain regions (File and Seth, 2003), social interaction can still be modulated by manipulations of a single circuit element.

Combined, these two studies reveal that the BLA-vHPC circuit can control anxiety and social interaction in the same manner that would be predicted by the animal and human literature discussed throughout this review. This demonstrates that anxiety and social behaviors can be mechanistically linked at the level of the neural circuit. These studies also provide evidence that the co-morbidity of anxiety disorders and autism spectrum disorders (Gillott et al., 2001; Pine et al., 2008; MacNeil et al., 2009) may, in part, be caused by dysfunction of circuits that mediate both anxiety and social behavior.

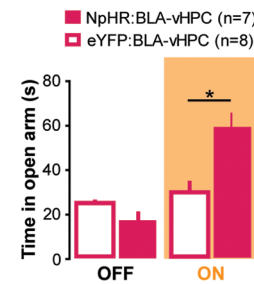
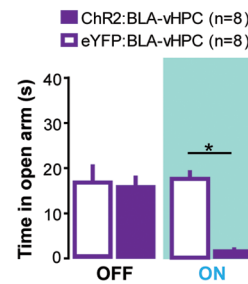
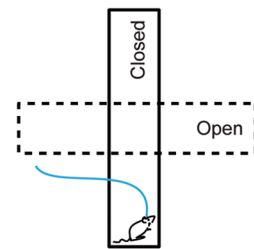
CONCLUSION

The above-mentioned studies provide the first evidence that a common circuit can link both social behavior and anxiety. Interestingly, these studies also provide evidence that manipulation of a single population of synapses can effectively change social behavior, which is likely dependent on multiple circuits acting in concert (Baron-Cohen et al., 2000; File and Seth, 2003; Bachevalier and Loveland, 2006; Rushworth et al., 2013). Perhaps

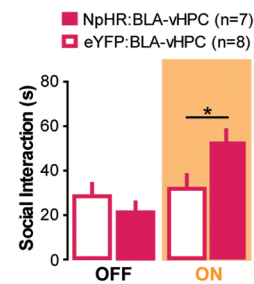
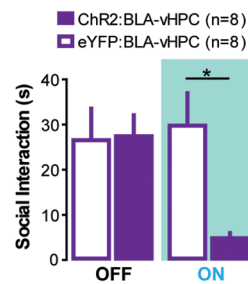
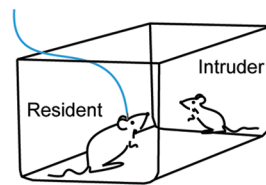
A Open Field Test



B Elevated Plus Maze



C Resident Intruder Test



D Three-Chamber Test

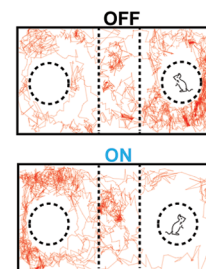
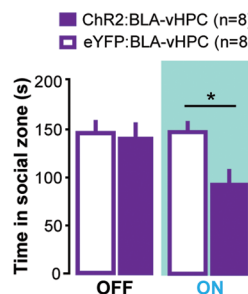
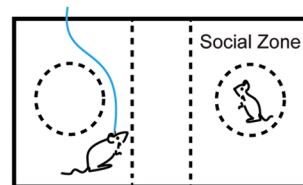


FIGURE 2 | Projections from the BLA to the vHPC bidirectionally modulate anxiety-related behaviors as well as social interaction.

To perform all of the following experiments, channelrhodopsin-2 or an enhanced version of halorhodopsin was injected into the basolateral amygdala (BLA) and an optical fiber was placed above the ventral hippocampus (vHPC). This allowed selective optogenetic manipulation of BLA projections to the vHPC. **(A)** In the open field test, decreased time spent in the center was measured as a proxy for increased anxiety. Excitation of BLA-vHPC projections lead to an increase in anxiety-related behaviors while inhibition of BLA-vHPC projections lead to a decrease in anxiety-related behaviors. **(B)** In the elevated plus maze, decreased time in the open arms was measured as a proxy for increased anxiety. Excitation of BLA-vHPC projections lead to an increase in anxiety-related behaviors while inhibition of BLA-vHPC projections lead to a decrease in anxiety-related behaviors. **(C)** The resident intruder test was used to measure social interaction. The overall score of social interaction included body sniffing,

anogenital sniffing, direct contact, and close following (<1 cm). Activation of BLA-vHPC projections led to a decrease in social interaction while inhibition of BLA-vHPC projections led to an increase in social interaction. **(D)** The three-chamber test was used as a test for sociability. Time spent in the social zone was measured as proxy for sociability. Activation of BLA-vHPC projections lead to a decrease in time spent in the social zone. **(A–D)** These experiments demonstrate that anxiety and social interaction can be modulated at the level of the neural circuit. Additionally activation of BLA-vHPC projections leads to increases in anxiety-related behaviors as well as decreases in social interaction while inhibition of the same circuit causes a decrease in anxiety-related behaviors as well as an increase in social interaction. Data are mean values and error bars represent SEM. For the Open Field Test and Elevated Plus Maze, the light-off epochs were pooled and averaged (One Way ANOVA with Bonferroni post test, $*p < 0.01$). For the Resident Intruder Test and the Three-Chamber Test statistics described in Felix-Ortiz and Tye (2014) ($*p < 0.05$).

the manipulation of BLA-vHPC drives multiple downstream circuits modulating these complex behaviors, or otherwise alters the transmission in a corticolimbic loop that maintains behavioral states. It remains unclear from these studies whether the observed changes in social behavior seen after optogenetic manipulations of BLA-vHPC are due to direct control of social behavior or are secondary to the changes in the state of anxiety.

The fact that social deficits and general anxiety do not always co-occur suggests that the mechanism underlying these two forms of behavior are dissociable (Gonzalez et al., 1996; Schneier, 2006; Liu and Smith, 2009; Toth et al., 2012). It is possible that the difference between the variable social deficits seen in general anxiety and the socially-specific anxiety seen in social anxiety disorder arises from differences in functional connectivity between circuits governing both behaviors. Lastly, the high co-morbidity of anxiety disorders with autism spectrum disorders suggests that these diseases may share common pathological mechanisms (De Bruin et al., 2007; Simonoff et al., 2008). There are mouse models of autism that show co-expression of social deficits and general anxiety-related behaviors, while other models show social deficits without changes in general anxiety-related behaviors (Moy et al., 2008). Elucidating the circuit differences between various models may provide insight as to why some autistic patients have co-morbid anxiety disorders while others do not.

Future studies should aim to differentiate between non-overlapping circuits by identifying specific circuit elements wherein manipulation causes changes in either social behavior assays or anxiety-related behaviors without altering the other. Toward this end, optogenetically stimulating molecularly defined neurons within specific circuits could further elucidate where the separation and overlap lies between circuits controlling social behavior and anxiety. An example of this was seen in recent work which provided evidence that dopaminergic projections from the ventral tegmental area to the nucleus accumbens modulates social behavior, while dopaminergic projections to the mPFC modulates anxiety with no effect on social behavior (Gunaydin et al., 2014). Indeed, using optogenetics to clarify how circuits governing social behaviors interact with circuits governing other complex behaviors will likely provide insight about the mechanism by which social function is impaired in a wide array of psychiatric diseases.

ACKNOWLEDGMENTS

We thank Ada C. Felix-Ortiz for thoughtful comments on this manuscript as well as for the use of illustrations. We thank the BCS department and the Picower Institute for support, as well as funding to Kay M. Tye from the PIIF Funds from the JPB Foundation, Whitehall Foundation, Klingenstein Foundation, Whitehead Career Development Professorship, NARSAD Young Investigator Award, Alfred P. Sloan Foundation, NIH New Innovator Award (DP2-DK-102256-01), and NIMH (R01-MH102441-01). We would also like to thank the BCS department for funding support through the Jeffrey ('76) and Nancy Halis Fellowship and the Henry E Singleton (1940) Fund (Stephen A. Allsop) in addition to the NIGMS T32(GM007484) (Caitlin M. Vander Weele). Lastly, we would also like to thank the NWO Rubicon Program and Simons Center for the Social Brain for funding support (Romy Wichmann).

REFERENCES

- Adolphs, R. (2003). Cognitive neuroscience of human social behaviour. *Nat. Rev. Neurosci.* 4, 165–178. doi: 10.1038/nrn1056
- Adolphs, R. (2009). The social brain: neural basis of social knowledge. *Annu. Rev. Psychol.* 60, 693–716. doi: 10.1146/annurev.psych.60.110707.163514
- Adolphs, R. (2010). What does the amygdala contribute to social cognition? *Ann. N.Y. Acad. Sci.* 1191, 42–61. doi: 10.1111/j.1749-6632.2010.05445.x
- Adolphs, R., Tranel, D., Damasio, H., and Damasio, A. (1994). Impaired recognition of emotion in facial expressions following bilateral damage to the human amygdala. *Nature* 372, 669–672. doi: 10.1038/372669a0
- Akimova, E., Lanzenberger, R., and Kasper, S. (2009). The serotonin-1A Receptor in anxiety disorders. *Biol. Psychiatry* 66, 627–635. doi: 10.1016/j.biopsych.2009.03.012
- Amaral, D. G. (2002). The primate amygdala and the neurobiology of social behavior: implications for understanding social anxiety. *Biol. Psychiatry* 51, 11–17. doi: 10.1016/S0006-3223(01)01307-5
- Amaral, D. G., Capitanio, J. P., Jourdain, M., Mason, W. A., Mendoza, S. P., and Prather, M. (2003). The amygdala: is it an essential component of the neural network for social cognition? *Neuropsychologia* 41, 235–240. doi: 10.1016/S0028-3932(02)00154-9
- American Psychiatric Association. (2013). *Diagnostic and Statistical Manual of Mental Disorders, 5th Edn.* Arlington, VA: American Psychiatric Publishing.
- Amico, J. A., Mantella, R. C., Vollmer, R. R., and Li, X. (2004). Anxiety and stress responses in female oxytocin deficient mice. *J. Neuroendocrinol.* 16, 319–324. doi: 10.1111/j.0953-8194.2004.01161.x
- Anagnostaras, S. G., Craske, M. G., and Fanselow, M. S. (1999). Anxiety: at the intersection of genes and experience. *Nat. Neurosci.* 2, 780–782. doi: 10.1038/12146
- Andari, E., Duhamel, J. R., Zalla, T., Herbrecht, E., Leboyer, M., and Sirigu, A. (2010). Promoting social behavior with oxytocin in high-functioning autism spectrum disorders. *Proc. Natl. Acad. Sci. U.S.A.* 107, 4389–4394. doi: 10.1073/pnas.0910249107
- Anderson, D. J. (2012). Optogenetics, sex and violence in the brain: implications for Psychiatry. *Biol. Psychiatry* 71, 1081–1089. doi: 10.1016/j.biopsych.2011.11.012
- Anthony, T. E., Dee, N., Bernard, A., Lerchner, W., Heintz, N., and Anderson, D. J. (2014). Control of stress-induced persistent anxiety by an extra-amygdala septohypothalamic circuit. *Cell* 156, 522–536. doi: 10.1016/j.cell.2013.12.040
- Antony, C., and Jallon, J. (1982). The chemical basis for sex recognition in *Drosophila melanogaster*. *J. Insect Physiol.* 28, 873–880. doi: 10.1016/0022-1910(82)90101-9
- Aragona, B. J., Liu, Y., Curtis, J. T., Stephan, F. K., and Wang, Z. (2003). A critical role for nucleus accumbens dopamine in partner-preference formation in male prairie voles. *J. Neurosci.* 23, 3483–3490. doi: 10.1038/nn1613
- Aragona, B. J., Liu, Y., Yu, Y. J., Curtis, J. T., Detwiler, J. M., Insel, T. R., et al. (2006). Nucleus accumbens dopamine differentially mediates the formation and maintenance of monogamous pair bonds. *Nat. Neurosci.* 9, 133–139. doi: 10.1038/nn1613
- Aston-Jones, G., and Deisseroth, K. (2013). Recent advances in optogenetics and pharmacogenetics. *Brain Res.* 1511, 1–5. doi: 10.1016/j.brainres.2013.01.026
- Atsak, P., Orre, M., Bakker, P., Cerliani, L., Rooszendaal, B., Gazzola, V., et al. (2011). Experience modulates vicarious freezing in rats: a model for empathy. *PLoS ONE* 6:e21855. doi: 10.1371/journal.pone.0021855
- Bachevalier, J., and Loveland, K. A. (2006). The Orbitofrontal-amygdala circuit and self-regulation of social-emotional behavior in autism. *Neurosci. Biobehav. Rev.* 30, 97–117. doi: 10.1016/j.neubiorev.2005.07.002
- Bannerman, D. M., Rawlins, J. N., McHugh, S. B., Deacon, R. M., Yee, B. K., Bast, T., et al. (2004). Regional dissociations within the hippocampus—memory and anxiety. *Neurosci. Biobehav. Rev.* 28, 273–283. doi: 10.1016/j.neubiorev.2004.03.004
- Baron-Cohen, S., Ring, H. A., Bullmore, E. T., Wheelwright, S., Ashwin, C., and Williams, S. C. R. (2000). The amygdala theory of autism. *Neurosci. Biobehav. Rev.* 24, 355–364. doi: 10.1016/S0149-7634(00)00011-7
- Baron-Cohen, S., Ring, H. A., Wheelwright, S., Bullmore, E. T., Brammer, M. J., Simmons, A., et al. (1999). Social intelligence in the normal and autistic brain: an fMRI study. *Eur. J. Neurosci.* 11, 1891–1898. doi: 10.1046/j.1460-9568.1999.00621.x
- Bartal, I. B. A., Decety, J., and Mason, P. (2011). Empathy and pro-social behavior in rats. *Science* 334, 1427–1430. doi: 10.1126/science.1210789

- Bellugi, U., Lichtenberger, L., Jones, W., Lai, Z., and St. George, M. (2000). I. The neurocognitive profile of williams syndrome: a complex pattern of strengths and weaknesses. *J. Cogn. Neurosci.* 12(Suppl. 1), 7–29. doi: 10.1162/089892900561959
- Bickart, K. C., Hollenbeck, M. C., Barrett, L. F., and Dickerson, B. C. (2012). Intrinsic amygdala–cortical functional connectivity predicts social network size in humans. *J. Neurosci.* 32, 14729–14741. doi: 10.1523/JNEUROSCI.1599-12.2012
- Bickart, K. C., Wright, C. I., Dautoff, R. J., Dickerson, B. C., and Barrett, L. F. (2011). Amygdala volume and social network size in humans. *Nat. Neurosci.* 14, 163–164. doi: 10.1038/nn.2724
- Bielsky, I. F., Hu, S.-B., Szegda, K. L., Westphal, H., and Young, L. J. (2004). Profound impairment in social recognition and reduction in anxiety-like behavior in vasopressin v1a receptor knockout mice. *Neuropsychopharmacology* 29, 483–493. doi: 10.1038/sj.npp.1300360
- Bishop, S. J. (2007). Neurocognitive mechanisms of anxiety: an integrative account. *Trends Cogn. Sci.* 11, 307–316. doi: 10.1016/j.tics.2007.05.008
- Bliss-Moreau, E., Moadab, G., Bauman, M. D., and Amaral, D. G. (2013). The impact of early amygdala damage on juvenile rhesus macaque social behavior. *J. Cogn. Neurosci.* 25, 2124–2140. doi: 10.1162/jocn_a_00483
- Blume, A., Bosch, O. J., Miklos, S., Torner, L., Wales, L., Waldherr, M., et al. (2008). Oxytocin reduces anxiety via ERK1/2 activation: local effect within the rat hypothalamic paraventricular nucleus. *Eur. J. Neurosci.* 27, 1947–1956. doi: 10.1111/j.1460-9568.2008.06184.x
- Bosch, O. J., and Neumann, I. D. (2008). Brain vasopressin is an important regulator of maternal behavior independent of dams' trait anxiety. *Proc. Natl. Acad. Sci. U.S.A.* 105, 17139–17144. doi: 10.1073/pnas.0807412105
- Boydén, E. S., Zhang, F., Bamberg, E., Nagel, G., and Deisseroth, K. (2005). Millisecond-timescale, genetically targeted optical control of neural activity. *Nat. Neurosci.* 8, 1263–1268. doi: 10.1038/nn1525
- Broekkamp, C. L., Rijk, H. W., Joly-Gelouin, D., and Lloyd, K. L. (1986). Major tranquilizers can be distinguished from minor tranquilizers on the basis of effects on marble burying and swim-induced grooming in mice. *Eur. J. Pharmacol.* 126, 223–229.
- Brown, S., and Schafer, E. A. (1888). An investigation into the functions of the occipital and temporal lobes of the monkey's brain. *Philos. Trans. R. Soc. Lond. B* 179, 303–327. doi: 10.1098/rstb.1888.0011
- Cacioppo, J. T. (2002). Social neuroscience: understanding the pieces fosters understanding the whole and vice versa. *Am. Psychol.* 57, 819–831. doi: 10.1037/0003-066X.57.11.819
- Cadogan, A. K., Kendall, D. A., Fink, H., and Marsden, C. A. (1994). Social interaction increases 5-HT release and cAMP efflux in the rat ventral hippocampus *in vivo*. *Behav. Pharmacol.* 5, 299–305.
- Campos, A. C., Fogaca, M. V., Aguiar, D. C., Guimaraes, F. S., Campos, A. C., Fogaca, M. V., et al. (2013). Animal Models of Anxiety Disorders and Stress. *Rev. Bras. Psiquiatr.* 35, S101–S111. doi: 10.1590/1516-4446-2013-1139
- Carter, C. S., DeVries, A. C., and Getz, L. L. (1995). Physiological substrates of mammalian monogamy: the prairie vole model. *Neurosci. Biobehav. Rev.* 19, 303–314. doi: 10.1016/0149-7634(94)00070-H
- Carter, M. D. C., and Krug, B. S. M. (2009). The functional neuroanatomy of dread: functional magnetic resonance imaging insights into generalized anxiety disorder and its treatment. *Am. J. Psychiatry* 166, 263–265. doi: 10.1176/appi.ajp.2008.08081833
- Castagné, V., Moser, P., Roux, S., and Porsolt, R. D. (2001). “Rodent models of depression: forced swim and tail suspension behavioral despair tests in rats and mice,” in *Current Protocols in Neuroscience*. Vol. 55 (John Wiley & Sons, Inc), 8.10A.1–8.10A.14 Available online at: <http://onlinelibrary.wiley.com/doi/10.1002/0471142301.ns0810as55.abstract>
- Chen, A. C., and Etkin, A. (2013). Hippocampal network connectivity and activation differentiates post-traumatic stress disorder from generalized anxiety disorder. *Neuropsychopharmacology* 38, 1889–1898. doi: 10.1038/npp.2013.122
- Cheney, D., Seyfarth, R., and Smuts, B. (1986). Social relationships and social cognition in nonhuman primates. *Science* 234, 1361–1366. doi: 10.1126/science.3538419
- Cho, M. M., DeVries, A. C., Williams, J. R., and Carter, C. S. (1999). The effects of oxytocin and vasopressin on partner preferences in male and female prairie voles (*Microtus ochrogaster*). *Behav. Neurosci.* 113, 1071–1079.
- Choi, G. B., Dong, H.-W., Murphy, A. J., Valenzuela, D. M., Yancopoulos, G. D., Swanson, L. W., et al. (2005). Lhx6 delineates a pathway mediating innate reproductive behaviors from the amygdala to the hypothalamus. *Neuron* 46, 647–660. doi: 10.1016/j.neuron.2005.04.011
- Chow, B. Y., Han, X., Dobry, A. S., Qian, X., Chuong, A. S., Li, M., et al. (2010). High-performance genetically targetable optical neural silencing by light-driven proton pumps. *Nature* 463, 98–102. doi: 10.1038/nature08652
- Ciocchi, S., Herry, C., Grenier, F., Wolff, S. B. E., Letzkus, J. J., Vlachos, I., et al. (2010). Encoding of conditioned fear in central amygdala inhibitory circuits. *Nature* 468, 277–282. doi: 10.1038/nature09559
- Council for International Organizations of Medical Sciences. (2002). International ethical guidelines for biomedical research involving human subjects. *Bull. Med. Ethics* 182, 17–23.
- Crawley, J. N. (2007). Mouse behavioral assays relevant to the symptoms of autism. *Brain Pathol.* 17, 448–459. doi: 10.1111/j.1750-3639.2007.00096.x
- Cruz, F. C., Koya, E., Guez-Barber, D. H., Bossert, J. M., Lupica, C. R., Shaham, Y., et al. (2013). New technologies for examining the role of neuronal ensembles in drug addiction and fear. *Nat. Rev. Neurosci.* 14, 743–754. doi: 10.1038/nrn3597
- Cryan, J. F., and Holmes, A. (2005). The ascent of mouse: advances in modelling human depression and anxiety. *Nat. Rev. Drug Discov.* 4, 775–790. doi: 10.1038/nrd1825
- Cryan, J. F., Kelly, P. H., Neijt, H. C., Sansig, G., Flor, P. J., and van Der Putten, H. (2003). Antidepressant and anxiolytic-like effects in mice lacking the group III metabotropic glutamate receptor mGluR7. *Eur. J. Neurosci.* 17, 2409–2417. doi: 10.1046/j.1460-9568.2003.02667.x
- Cryan, J. F., and Sweeney, F. F. (2011). The age of anxiety: role of animal models of anxiolytic action in drug discovery. *Br. J. Pharmacol.* 164, 1129–1161. doi: 10.1111/j.1476-5381.2011.01362.x
- Davidson, J. R., Potts, N., Richichi, E., Krishnan, R., Ford, S. M., Smith, R., et al. (1993). Treatment of social phobia with clonazepam and placebo. *J. Clin. Psychopharmacol.* 13, 423–428.
- Davidson, R. J. (2002). Anxiety and affective style: role of prefrontal cortex and amygdala. *Biol. Psychiatry* 51, 68–80. doi: 10.1016/S0006-3223(01)01328-2
- Davis, M. (1992). The role of the amygdala in fear and anxiety. *Annu. Rev. Neurosci.* 15, 353–375. doi: 10.1146/annurev.ne.15.030192.002033
- Davis, M., Walker, D. L., Miles, L., and Grillon, C. (2009). Phasic vs sustained fear in rats and humans: role of the extended amygdala in fear vs anxiety. *Neuropsychopharmacology* 35, 105–135. doi: 10.1038/npp.2009.109
- Dawson, G., Toth, K., Abbott, R., Osterling, J., Munson, J., Estes, A., et al. (2004). Early social attention impairments in autism: social orienting, joint attention, and attention to distress. *Dev. Psychol.* 40, 271–283. doi: 10.1037/0012-1649.40.2.271
- Deacon, R. M. J., Bannerman, D. M., and Nicholas, J. (2002). Anxiolytic effects of cytotoxic hippocampal lesions in rats. *Behav. Neurosci.* 116, 494–497. doi: 10.1037/0735-7044.116.3.494
- De Bruin, E. I., Ferdinand, R. F., Meester, S., de Nijs, P. F. A., and Verheij, F. (2007). High rates of psychiatric co-morbidity in PDD-NOS. *J. Autism Dev. Disord.* 37, 877–886. doi: 10.1007/s10803-006-0215-x
- Deisseroth, K. (2014). Circuit dynamics of adaptive and maladaptive behaviour. *Nature* 505, 309–317. doi: 10.1038/nature12982
- Derntl, B., and Habel, U. (2013). *Deficits in Social Cognition: A Marker for Psychiatric Disorders?* Springer. Available online at: <http://link.springer.com.ezp-prod1.hul.harvard.edu/article/10.1007%2F00406-011-0244-0/fulltext.html> (Accessed December 31).
- De Waal, F. B. M., and Suchak, M. (2010). Prosocial primates: selfish and unselfish motivations. *Philos. Trans. R. Soc. B Biol. Sci.* 365, 2711–2722. doi: 10.1098/rstb.2010.0119
- Dias, B. G., Banerjee, S. B., Goodman, J. V., and Ressler, K. J. (2013). Towards new approaches to disorders of fear and anxiety. *Curr. Opin. Neurobiol.* 23, 346–352. doi: 10.1016/j.comb.2013.01.013
- Dölen, G., Darvishzadeh, A., Huang, K. W., and Malenka, R. C. (2013). Social reward requires coordinated activity of nucleus accumbens oxytocin and serotonin. *Nature* 501, 179–184. doi: 10.1038/nature12518
- Domes, G., Heinrichs, M., Michel, A., Berger, C., and Herpertz, S. C. (2007). Oxytocin improves ‘mind-reading’ in humans. *Biol. Psychiatry* 61, 731–733. doi: 10.1016/j.biopsych.2006.07.015
- Donaldson, Z. R., and Young, L. J. (2008). Oxytocin, vasopressin, and the neurogenetics of sociality. *Science* 322, 900–904. doi: 10.1126/science.1158668

- Drevets, W. C. (2003). Neuroimaging abnormalities in the amygdala in mood disorders. *Ann. N.Y. Acad. Sci.* 985, 420–444. doi: 10.1111/j.1749-6632.2003.tb07098.x
- Dulawa, S. C., and Hen, R. (2005). Recent advances in animal models of chronic antidepressant effects: the novelty-induced hypophagia test. *Neurosci. Biobehav. Rev.* 29, 771–83. doi: 10.1016/j.neubiorev.2005.03.017
- Emery, N. J., Capitano, J. P., Mason, W. A., Machado, C. J., Mendoza, S. P., and Amaral, D. G. (2001). The effects of bilateral lesions of the amygdala on dyadic social interactions in rhesus monkeys (Macaca Mulatta). *Behav. Neurosci.* 115, 515–544. doi: 10.1037/0735-7044.115.3.515
- Endler, N. S., and Kocovski, N. L. (2001). State and trait anxiety revisited. *J. Anxiety Disord.* 15, 231–245. doi: 10.1016/S0887-6185(01)00060-3
- Etkin, A., Klemm, K. C., Dudman, J. T., Rogan, M. T., Hen, R., Kandel, E. R., et al. (2004). Individual differences in trait anxiety predict the response of the basolateral amygdala to unconsciously processed fearful faces. *Neuron* 44, 1043–1055. doi: 10.1016/j.neuron.2004.12.006
- Etkin, A., and Wager, T. D. (2007). Functional neuroimaging of anxiety: a meta-analysis of emotional processing in PTSD, social anxiety disorder, and specific phobia. *Am. J. Psychiatry* 164, 1476–1488. doi: 10.1176/appi.ajp.2007.07030504
- Fedoroff, I. C., and Taylor, S. (2001). Psychological and pharmacological treatments of social phobia: a meta-analysis. *J. Clin. Psychopharmacol.* 21, 311–324. doi: 10.1097/00004714-200106000-00011
- Felix-Ortiz, A. C., Beyeler, A., Seo, C., Leppla, C. A., Wildes, C. P., and Tye, K. M. (2013). BLA to vHPC inputs modulate anxiety-related behaviors. *Neuron* 79, 658–664. doi: 10.1016/j.neuron.2013.06.016
- Felix-Ortiz, A. C., and Tye, K. M. (2014). Amygdala inputs to the ventral hippocampus bidirectionally modulate social behavior. *J. Neurosci.* 34, 586–595. doi: 10.1523/Jneurosci.4257-13.2014
- Fendt, M., and Fanselow, M. S. (1999). The neuroanatomical and neurochemical basis of conditioned fear. *Neurosci. Biobehav. Rev.* 23, 743–760. doi: 10.1016/S0149-7634(99)00016-0
- Fenno, L., Yizhar, O., and Deisseroth, K. (2011). The development and application of optogenetics. *Annu. Rev. Neurosci.* 34, 389–412. doi: 10.1146/annurev-neuro-061010-113817
- File, S. E., Hyde, J., and Pool, M. (1976). Effects of ethanol and chlordiazepoxide on social interaction in rats [proceedings]. *Br. J. Pharmacol.* 58, 465P.
- File, S. E., and Hyde, J. R. (1978). Can social interaction be used to measure anxiety? *Br. J. Pharmacol.* 62, 19–24.
- File, S. E., and Seth, P. (2003). A review of 25 years of the social interaction test. *Eur. J. Pharmacol.* 463, 35–53. doi: 10.1016/S0014-2999(03)01273-1
- File, S. E., and Wardill, A. G. (1975). The reliability of the hole-board apparatus. *Psychopharmacologia* 44, 47–51.
- Finn, D. A., Rutledge-Gorman, M. T., and Crabbe, J. C. (2003). Genetic animal models of anxiety. *Neurogenetics* 4, 109–135. doi: 10.1007/s10048-003-0143-2
- Frantz, S. (2004). Therapeutic area influences drug development costs. *Nat. Rev. Drug Discov.* 3, 466–466. doi: 10.1038/nrd1436
- Fricchione, G. (2004). Generalized anxiety disorder. *N. Engl. J. Med.* 351, 675–682. doi: 10.1056/NEJMc022342
- Fuchs, E., and Flugge, G. (2006). Experimental animal models for the simulation of depression and anxiety. *Dialogues Clin. Neurosci.* 8, 323–333.
- Gardner, C. R. (1985). Distress vocalization in rat pups. A simple screening method for anxiolytic drugs. *J. Pharmacol. Methods* 14, 181–187.
- Getz, L. L., Carter, S. C., and Gavish, L. (1981). The mating system of the prairie vole, *Microtus ochrogaster*: field and laboratory evidence for pair-bonding. *Behav. Ecol. Sociobiol.* 8, 189–194. doi: 10.1007/BF00299829
- Gillott, A., Furniss, E., and Walter, A. (2001). Anxiety in high-functioning children with autism. *Autism* 5, 277–286. doi: 10.1177/1362361301005003005
- Gonzalez, L. E., Andrews, N., and File, S. E. (1996). 5-HT_{1A} and benzodiazepine receptors in the basolateral amygdala modulate anxiety in the social interaction test, but not in the elevated plus-maze. *Brain Res.* 732, 145–53. doi: 10.1016/0006-8993(96)00517-3
- Gordon, C. T., State, R. C., Nelson, J. E., Hamburger, S. D., and Rapoport, J. L. (1993). A double-blind comparison of clomipramine, desipramine, and placebo in the treatment of autistic disorder. *Arch. Gen. Psychiatry* 50, 441–447. doi: 10.1001/archpsyc.1993.01820180039004
- Gradinaru, V., Zhang, F., Ramakrishnan, C., Mattis, J., Prakash, R., Diester, I., et al. (2010). Molecular and cellular approaches for diversifying and extending optogenetics. *Cell* 141, 154–165. doi: 10.1016/j.cell.2010.02.037
- Gross, C., Zhuang, X., Stark, K., Ramboz, S., Oosting, R., Kirby, L., et al. (2002). Serotonin_{1A} receptor acts during development to establish normal anxiety-like behaviour in the adult. *Nature* 416, 396–400. doi: 10.1038/416396a
- Guastella, A. J., Mitchell, P. B., and Dadds, M. R. (2008). Oxytocin increases gaze to the eye region of human faces. *Biol. Psychiatry* 63, 3–5. doi: 10.1016/j.biopsych.2007.06.026
- Gunaydin, L. A., Grosenick, L., Finkelstein, J. C., Kauvar, I. V., Fenno, L. E., Adhikari, A., et al. (2014). Natural neural projection dynamics underlying social behavior. *Cell* 157, 1535–1551. doi: 10.1016/j.cell.2014.05.017
- Haas, B. W., Hoefl, F., Searcy, Y. M., Mills, D., Bellugi, U., and Reiss, A. (2010). Individual differences in social behavior predict amygdala response to fearful facial expressions in Williams syndrome. *Neuropsychologia* 48, 1283–1288. doi: 10.1016/j.neuropsychologia.2009.12.030
- Hall, C., and Ballachey, E. L. (1932). A study of the rat's behavior in a field. a contribution to method in comparative psychology. *Univ. Calif. Publ. Psychol.* 6, 1–12.
- Harmer, C. J. (2002). Acute SSRI administration affects the processing of social cues in healthy volunteers. *Neuropsychopharmacology* 28, 148–152. doi: 10.1038/sj.npp.1300004
- Hau, J., Schapiro, S. J., and Van Hoosier, G. L. Jr. (2002). *Handbook of Laboratory Animal Science, 2nd Edn. Animal Models*. Boca Raton, FL: CRC Press.
- Haubensak, W., Kunwar, P. S., Cai, H., Ciochi, S., Wall, N. R., Ponnusamy, R., et al. (2010). Genetic dissection of an amygdala microcircuit that gates conditioned fear. *Nature* 468, 270–276. doi: 10.1038/nature09553
- Heisler, L. K., Chu, H.-M., Brennan, T. J., Danao, J. A., Bajwa, P., Parsons, L. H., et al. (1998). Elevated anxiety and antidepressant-like responses in serotonin 5-HT_{1A} receptor mutant mice. *Proc. Natl. Acad. Sci. U.S.A.* 95, 15049–15054.
- Heyndael, W., Sengupta, A., Beck, S., and Bhatnagar, S. (2014). Optogenetic examination identifies a context-specific role for orexins/hypocretins in anxiety-related behavior. *Physiol. Behav.* 130, 182–190. doi: 10.1016/j.physbeh.2013.10.005
- Hoge, E. A., Ivkovic, A., and Fricchione, G. L. (2012). Generalized anxiety disorder: diagnosis and treatment. *BMJ* 345:e7500. doi: 10.1136/bmj.e7500
- Hollander, E., Bartz, J., Chaplin, W., Phillips, A., Sumner, J., Soorya, L., et al. (2007). Oxytocin increases retention of social cognition in autism. *Biol. Psychiatry* 61, 498–503. doi: 10.1016/j.biopsych.2006.05.030
- Holmes, A., Kinney, J. W., Wrenn, C. C., Li, Q., Yang, R. J., Ma, L., et al. (2003). Galanin GAL-R1 receptor null mutant mice display increased anxiety-like behavior specific to the elevated plus-maze. *Neuropsychopharmacology* 28, 1031–1044. doi: 10.1038/sj.npp.1300164
- Insel, T. R. (2010). The challenge of translation in social neuroscience: a review of oxytocin, vasopressin, and affiliative behavior. *Neuron* 65, 768–779. doi: 10.1016/j.neuron.2010.03.005
- Insel, T. R., and Fernald, R. D. (2004). How the brain processes social information: searching for the social brain. *Annu. Rev. Neurosci.* 27, 697–722. doi: 10.1146/annurev.neuro.27.070203.144148
- Insel, T. R., and Hulihan, T. J. (1995). A gender-specific mechanism for pair bonding: oxytocin and partner preference formation in monogamous voles. *Behav. Neurosci.* 109, 782–789. doi: 10.1037/0735-7044.109.4.782
- Institute of Medicine (US) Forum on Neuroscience and Nervous System. (2008). *Challenges and Technical Limitations*. Text. Available online at: <http://www.ncbi.nlm.nih.gov/books/NBK50998/>
- Jefferson, J. W. (2001). Benzodiazepines and anticonvulsants for social phobia (social Anxiety Disorder). *J. Clin. Psychiatry* 62(Suppl. 1), 50–53.
- Jennings, J. H., Sparta, D. R., Stamatakis, A. M., Ung, R. L., Pleil, K. E., Kash, T. L., et al. (2013). Distinct extended amygdala circuits for divergent motivational states. *Nature* 496, 224–228. doi: 10.1038/nature12041
- Jeon, D., Kim, S., Chetana, M., Jo, D., Ruley, H. E., Lin, S. H., et al. (2010). Observational fear learning involves affective pain system and Cav1.2 Ca²⁺ channels in ACC. *Nat. Neurosci.* 13, 482–488. doi: 10.1038/nn.2504
- Johansen, J. P., Cain, C. K., Ostroff, L. E., and LeDoux, J. E. (2011). Molecular mechanisms of fear learning and memory. *Cell* 147, 509–524. doi: 10.1016/j.cell.2011.10.009
- Jonason, K. R., and Enloe, L. J. (1971). Alterations in social behavior following septal and amygdaloid lesions in the rat. *J. Comp. Physiol. Psychol.* 75, 286–301. doi: 10.1037/h0030808
- Kalin, N. H., and Shelton, S. E. (2003). Nonhuman primate models to study anxiety, emotion regulation, and psychopathology. *Ann. N.Y. Acad. Sci.* 1008, 189–200. doi: 10.1196/annals.1301.021

- Kalin, N. H., Shelton, S. E., and Davidson, R. J. (2004). The role of the central nucleus of the amygdala in mediating fear and anxiety in the primate. *J. Neurosci* 24, 5506–5515. doi: 10.1523/JNEUROSCI.0292-04.2004
- Kalueff, A. V., and Tuohimaa, P. (2005). The Suok ('ropewalking') murine test of anxiety. *Brain Res. Protoc.* 14, 87–99. doi: 10.1016/j.brainresprot.2004.11.002
- Kennedy, D. P., and Adolphs, R. (2012). The social brain in psychiatric and neurological disorders. *Trends Cogn. Sci.* 16, 559–572. doi: 10.1016/j.tics.2012.09.006
- Kent, J. M., Mathew, S. J., and Gorman, J. M. (2002). Molecular Targets in the treatment of anxiety. *Biol. Psychiatry* 52, 1008–1030. doi: 10.1016/S0006-3223(02)01672-4
- Kessler, R. C., DuPont, R. L., Berglund, P., and Wittchen, H. U. (1999). Impairment in pure and comorbid generalized anxiety disorder and major depression at 12 months in two national surveys. *Am. J. Psychiatry* 156, 1915–1923.
- Kheirbek, M. A., Drew, L. J., Burghardt, N. S., Costantini, D. O., Tannenholz, L., Ahmari, S. E., et al. (2013). Differential control of learning and anxiety along the dorsoventral axis of the dentate gyrus. *Neuron* 77, 955–968. doi: 10.1016/j.neuron.2012.12.038
- Kim, S.-Y., Adhikari, A., Lee, S. Y., Marshel, J. H., Kim, C. K., Mallory, C. S., et al. (2013a). Diverging neural pathways assemble a behavioural state from separable features in anxiety. *Nature* 496, 219–223. doi: 10.1038/nature12018
- Kim, S.-Y., Chung, K., and Deisseroth, K. (2013b). Light microscopy mapping of connections in the intact brain. *Trends Cogn. Sci.* 17, 596–599. doi: 10.1016/j.tics.2013.10.005
- Kim, T.-I., McCall, J. G., Jung, Y. H., Huang, X., Siuda, E. R., Li, Y., et al. (2013c). Injectable, cellular-scale optoelectronics with applications for wireless optogenetics. *Science* 340, 211–216. doi: 10.1126/science.1232437
- Kjelstrup, K. G., Tuvnes, F. A., Steffenach, H.-A., Murison, R., Moser, E. I., and Moser, M. B. (2002). Reduced fear expression after lesions of the ventral hippocampus. *Proc. Natl. Acad. Sci. U.S.A.* 99, 10825–10830. doi: 10.1073/pnas.152112399
- Kling, A., and Steklis, H. D. (1976). A neural substrate for affiliative behavior in nonhuman primates. *Brain Behav. Evol.* 13, 216–38. doi: 10.1159/000123811
- Klüver, H., and Bucy, P. C. (1937). 'Psychic Blindness' and other symptoms following bilateral temporal lobectomy in rhesus monkeys. *Am. J. Physiol.* 119, 352–353.
- Klüver, H., and Bucy, P. C. (1939). Preliminary analysis of functions of the temporal lobes in monkeys. *Arch. Neurol. Psychiatry* 42, 979–1000. doi: 10.1001/archneurpsyc.1939.02270240017001
- Knobloch, H. S., Charlet, A., Hoffmann, L. C., Eliava, M., Khrulev, S., Cetin, A. H., et al. (2012). Evoked axonal oxytocin release in the central amygdala attenuates fear response. *Neuron* 73, 553–566. doi: 10.1016/j.neuron.2011.11.030
- Knutson, B., Wolkowitz, O. M., Cole, S. W., Chan, T., Moore, E. A., Johnson, R. C., et al. (1998). Selective alteration of personality and social behavior by serotonergic intervention. *Am. J. Psychiatry* 155, 373–379.
- Krettek, J. E., and Price, J. L. (1978). Amygdaloid projections to subcortical structures within the basal forebrain and brainstem in the rat and cat. *J. Comp. Neurol.* 178, 225–253. doi: 10.1002/cne.901780204
- Kroenke, K., Spitzer, R. L., Williams, J. B. W., Monahan, P. O., and Löwe, B. (2007). Anxiety disorders in primary care: prevalence, impairment, comorbidity, and detection. *Ann. Int. Med.* 146, 317–325. doi: 10.7326/0003-4819-146-5-200703060-00004
- Kumar, V., Bhat, Z. A., and Kumar, D. (2013). Animal models of anxiety: a comprehensive review. *J. Pharmacol. Toxicol. Methods* 68, 175–183. doi: 10.1016/j.vascn.2013.05.003
- Labuschagne, I., Phan, K. L., Wood, A., Angstadt, M., Chua, P., Heinrichs, M., et al. (2010). Oxytocin attenuates amygdala reactivity to fear in generalized social anxiety disorder. *Neuropsychopharmacology* 35, 2403–2413. doi: 10.1038/npp.2010.123
- Lang, P. J., Davis, M., and Ohman, A. (2000). Fear and anxiety: animal models and human cognitive psychophysiology. *J. Affect. Disord.* 61, 137–159. doi: 10.1016/S0165-0327(00)00343-8
- Lee, G., and Hall, J. C. (2000). A newly uncovered phenotype associated with the fruitless gene of drosophila melanogaster: aggression-like head interactions between mutant males. *Behav. Genet.* 30, 263–275. doi: 10.1023/A:1026541215546
- Lewis, M. H., Tanimura, Y., Lee, L. W., and Bodfish, J. W. (2007). Animal models of restricted repetitive behavior in autism. *Behav. Brain Res.* 176, 66–74. doi: 10.1016/j.bbr.2006.08.023
- Lieberman, M. D. (2007). Social cognitive neuroscience: a review of core processes. *Annu. Rev. Psychol.* 58, 259–289. doi: 10.1146/annurev.psych.58.110405.085654
- Liebowitz, M. R., Gorman, J. M., Fyer, A. J., and Klein, D. F. (1985). Social phobia: review of a neglected anxiety disorder. *Arch. Gen. Psychiatry* 42, 729–736. doi: 10.1001/archpsyc.1985.01790300097013
- Lin, D., Boyle, M. P., Dollar, P., Lee, H., Perona, P., Lein, E. S., et al. (2011). Functional identification of an aggression locus in the mouse hypothalamus. *Nature* 470, 221–226. doi: 10.1038/nature09736
- Lister, R. G. (1990). Ethologically-based animal models of anxiety disorders. *Pharmacol. Ther.* 46, 321–340. doi: 10.1016/0163-7258(90)90021-S
- Liu, K., and Sternberg, P. W. (1995). Sensory regulation of male mating behavior in caenorhabditis elegans. *Neuron* 14, 79–89. doi: 10.1016/0896-6273(95)90242-2
- Liu, Z.-H., and Smith, C. B. (2009). Dissociation of social and nonsocial anxiety in a mouse model of fragile X syndrome. *Neurosci. Lett.* 454, 62–66. doi: 10.1016/j.neulet.2009.02.066
- Lorenzini, A. C., Bucherelli, C., and Giachetti, A. (1984). Passive and active avoidance behavior in the light-dark box test. *Physiol. Behav.* 32, 687–689. doi: 10.1016/0031-9384(84)90327-5
- Losh, M., Adolphs, R., Poe, M. D., Couture, S., Penn, D., Baranek, G., et al. (2009). Neuropsychological profile of autism and the broad autism phenotype. *Arch. Gen. Psychiatry* 66, 518–526. doi: 10.1001/archgenpsychiatry.2009.34
- Lukas, M., Toth, I., Reber, S. O., Slattery, D. A., Veenema, A. H., and Neumann, I. D. (2011). The neuropeptide oxytocin facilitates pro-social behavior and prevents social avoidance in rats and mice. *Neuropsychopharmacology* 36, 2159–2168. doi: 10.1038/npp.2011.95
- Machado, C. J., and Bachevalier, J. (2006). The impact of selective amygdala, orbital frontal cortex, or hippocampal formation lesions on established social relationships in rhesus monkeys (*Macaca mulatta*). *Behav. Neurosci.* 120, 761–786. doi: 10.1037/0735-7044.120.4.761
- Machado, C. J., Emery, N. J., Capitanio, J. P., Mason, W. A., Mendoza, S. P., and Amaral, D. G. (2008). Bilateral neurotoxic amygdala lesions in rhesus monkeys (*Macaca mulatta*): consistent pattern of behavior across different social contexts. *Behav. Neurosci.* 122, 251–266. doi: 10.1037/0735-7044.122.2.251
- MacMillan, S., Szeszko, P. R., Moore, G. J., Madden, R., Lorch, E., Ivey, J., et al. (2003). Increased amygdala: hippocampal volume ratios associated with severity of anxiety in pediatric major depression. *J. Child Adolesc. Psychopharmacol.* 13, 65–73. doi: 10.1089/104454603321666207
- MacNeil, B. M., Lopes, V. A., and Minnes, P. M. (2009). Anxiety in children and adolescents with autism spectrum disorders. *Res. Autism Spectr. Disord.* 3, 1–21. doi: 10.1016/j.rasd.2008.06.001
- Macosko, E. Z., Pokala, N., Feinberg, E. H., Chalasani, S. H., Butcher, R. A., Clardy, J., et al. (2009). A hub-and-spoke circuit drives pheromone attraction and social behaviour in *C. Elegans*. *Nature* 458, 1171–1175. doi: 10.1038/nature07886
- Malone, R. P., Maislin, G., Choudhury, M. S., Gifford, C., and Delaney, M. A. (2002). Risperidone treatment in children and adolescents with autism: short- and long-term safety and effectiveness. *J. Am. Acad. Child Adolesc. Psychiatry* 41, 140–147. doi: 10.1097/00004583-200202000-00007
- McDonald, A. J. (1982a). Cytoarchitecture of the central amygdaloid nucleus of the rat. *J. Comp. Neurol.* 208, 401–418. doi: 10.1002/cne.902080409
- McDonald, A. J. (1982b). Neurons of the lateral and basolateral amygdaloid nuclei: a golgi study in the rat. *J. Comp. Neurol.* 212, 293–312. doi: 10.1002/cne.902120307
- McDonald, A. J. (1998). Cortical pathways to the mammalian amygdala. *Prog. Neurobiol.* 55, 257–332. doi: 10.1016/S0301-0082(98)00003-3
- McDougle, C. J., Scahill, L., Aman, M. G., McCracken, J. T., Tierney, E., Davies, M., et al. (2005). Risperidone for the core symptom domains of autism: results from the study by the autism network of the research units on pediatric psychopharmacology. *Am. J. Psychiatry* 162, 1142–1148. doi: 10.1176/appi.ajp.162.6.1142
- McFarlane, H. G., Kusek, G. K., Yang, M., Phoenix, J. L., Bolivar, V. J., and Crawley, J. N. (2008). Autism-like behavioral phenotypes in BTBR T+tf/J mice. *Genes Brain Behav.* 7, 152–163. doi: 10.1111/j.1601-183X.2007.00330.x
- McHugh, S. B., Deacon, R. M. J., Rawlins, J. N. P., and Bannerman, D. M. (2004). Amygdala and ventral hippocampus contribute differentially to mechanisms of fear and anxiety. *Behav. Neurosci.* 118, 63–78. doi: 10.1037/0735-7044.118.1.63
- Meyer-Lindenberg, A., Domes, G., Kirsch, P., and Heinrichs, M. (2011). Oxytocin and vasopressin in the human brain: social neuropeptides for translational medicine. *Nat. Rev. Neurosci.* 12, 524–538. doi: 10.1038/nrn3044

- Meyer-Lindenberg, A., Hariri, A. R., Munoz, K. E., Mervis, C. B., Mattay, V. S., Morris, C. A., et al. (2005). Neural correlates of genetically abnormal social cognition in williams syndrome. *Nat. Neurosci.* 8, 991–993. doi: 10.1038/nn1494
- Missig, G., Ayers, L. W., Schulkin, J., and Rosen, J. B. (2010). Oxytocin reduces background anxiety in a fear-potentiated startle paradigm. *Neuropsychopharmacology* 35, 2607–2616. doi: 10.1038/npp.2010.155
- Morris, J. S., Frith, C. D., Perrett, D. I., Rowland, D., Young, A. W., Calder, A. J., et al. (1996). A differential neural response in the human amygdala to fearful and happy facial expressions. *Nature* 383, 812–815. doi: 10.1038/383812a0
- Moy, S. S., Nadler, J. J., Perez, A., Barbaro, R. P., Johns, J. M., Magnuson, T. R., et al. (2004). Sociability and preference for social novelty in five inbred strains: an approach to assess autistic-like behavior in mice. *Genes Brain Behav.* 3, 287–302. doi: 10.1111/j.1601-1848.2004.00076.x
- Moy, S. S., Nadler, J. J., Young, N. B., Nonneman, R. J., Segall, S. K., Andrade, G. M., et al. (2008). Social approach and repetitive behavior in eleven inbred mouse strains. *Behav. Brain Res.* 191, 118–129. doi: 10.1016/j.bbr.2008.03.015
- Mukohata, Y., Sugiyama, Y., Ihara, K., and Yoshida, M. (1988). An Australian halobacterium contains a novel proton pump retinal protein: archaerhodopsin. *Biochem. Biophys. Res. Commun.* 151, 1339–1345. doi: 10.1016/S0006-291X(88)80509-6
- Mundy, P., Sigman, M., Ungerer, J., and Sherman, T. (1986). Defining the social deficits of autism: the contribution of non-verbal communication measures. *J. Child Psychol. Psychiatry* 27, 657–669. doi: 10.1111/j.1469-7610.1986.tb00190.x
- Muris, P., Steerneman, P., Merckelbach, H., Holdrinet, I., and Meesters, C. (1998). Comorbid anxiety symptoms in children with pervasive developmental disorders. *J. Anxiety Disord.* 12, 387–393. doi: 10.1016/S0887-6185(98)00022-X
- Nagel, G., Ollig, D., Fuhrmann, M., Kateriya, S., Musti, A. M., Bamberg, E., et al. (2002). Channelrhodopsin-1: a light-gated proton channel in green algae. *Science* 296, 2395–2398. doi: 10.1126/science.1072068
- Nagel, G., Szellas, T., Huhn, W., Kateriya, S., Adeishvili, N., Berthold, P., et al. (2003). Channelrhodopsin-2, a directly light-gated cation-selective membrane channel. *Proc. Natl. Acad. Sci. U.S.A.* 100, 13940–13945. doi: 10.1073/pnas.1936192100
- Nakatani, J., Tamada, K., Hatanaka, F., Ise, S., Ohta, H., Inoue, K., et al. (2009). Abnormal behavior in a chromosome-engineered mouse model for human 15q11-13 duplication seen in autism. *Cell* 137, 1235–1246. doi: 10.1016/j.cell.2009.04.024
- Nestler, E. J., and Hyman, S. E. (2010). Animal models of neuropsychiatric disorders. *Nat. Neurosci.* 13, 1161–1169. doi: 10.1038/nn.2647
- Neumann, I. D., and Landgraf, R. (2012). Balance of brain oxytocin and vasopressin: implications for anxiety, depression, and social behaviors. *Trends Neurosci.* 35, 649–659. doi: 10.1016/j.tins.2012.08.004
- Nieh, E. H., Kim, S.-Y., Namburi, P., and Tye, K. M. (2013). Optogenetic dissection of neural circuits underlying emotional valence and motivated behaviors. *Brain Res.* 1511, 73–92. doi: 10.1016/j.brainres.2012.11.001
- O'Donnell, P., and Grace, A. A. (1995). Synaptic interactions among excitatory afferents to nucleus accumbens neurons: hippocampal gating of prefrontal cortical input. *J. Neurosci.* 15, 3622–3639
- Ormel, J., Von Korff, M., Van den Brink, W., Katon, W., Brilman, E., and Oldehinkel, T. (1993). Depression, anxiety, and social disability show synchrony of change in primary care patients. *Am. J. Public Health* 83, 385–390.
- Pape, H.-C., and Pare, D. (2010). Plastic synaptic networks of the amygdala for the acquisition, expression, and extinction of conditioned fear. *Physiol. Rev.* 90, 419–463. doi: 10.1152/physrev.00037.2009
- Paré, D., and Smith, Y. (1993). Distribution of GABA immunoreactivity in the amygdaloid complex of the cat. *Neuroscience* 57, 1061–1076. doi: 10.1016/0306-4522(93)90049-L
- Peça, J., Feliciano, C., Ting, J. T., Wang, W., Wells, M. F., Venkatraman, T. N., et al. (2011). Shank3 mutant mice display autistic-like behaviours and striatal dysfunction. *Nature* 472, 437–442. doi: 10.1038/nature09965
- Pellow, S., Chopin, P., File, S. E., and Briley, M. (1985). Validation of open:closed arm entries in an elevated plus-maze as a measure of anxiety in the rat. *J. Neurosci. Methods* 14, 149–167.
- Pikkariainen, M., Rönkkö, S., Savander, V., Insausti, R., and Pitkänen, A. (1999). Projections from the lateral, basal, and accessory basal nuclei of the amygdala to the hippocampal formation in rat. *J. Comp. Neurol.* 403, 229–260. doi: 10.1002/(SICI)1096-9861(19990111)403:2<229::AID-CNE7>3.0.CO;2-P
- Pine, D. S., Guyer, A. E., Goldwin, M., Towbin, K. A., and Leibenluft, E. (2008). Autism spectrum disorder scale scores in pediatric mood and anxiety disorders. *J. Am. Acad. Child Adolesc. Psychiatry* 47, 652–661. doi: 10.1097/CHI.0b013e31816bffa5
- Pinel, J. P. J., and Treit, D. (1983). “The conditioned defensive burying paradigm and behavioral neuroscience,” in *Behavioral Approaches to Brain Research*, ed T. E. Robinson (New York, NY: Oxford University Press), 212–234.
- Plaut, S. M. (1972). Maternal deprivation in mice and rats. *Lab. Anim. Sci.* 22, 594.
- Porter, M. A., Dodd, H., and Cairns, D. (2009). Psychopathological and behavior impairments in williams-beuren syndrome: the influence of gender, chronological age, and cognition. *Child Neuropsychol.* 15, 359–374. doi: 10.1080/09297040802577881
- Qin, S., Young, C. B., Duan, X., Chen, T., Supekar, K., and Menon, V. (2014). Amygdala subregional structure and intrinsic functional connectivity predicts individual differences in anxiety during early childhood. *Biol. Psychiatry* 75, 892–900. doi: 10.1016/j.biopsych.2013.10.006
- Ramboz, S., Oosting, R., Amara, D. A., Kung, H. F., Blier, P., Monica Mendelsohn, J., et al. (1998). Serotonin receptor 1A knockout: an animal model of anxiety-related disorder. *Proc. Natl. Acad. Sci. U.S.A.* 95, 14476–14481. doi: 10.1073/pnas.95.24.14476
- Rauch, S. L., Shin, L. M., and Wright, C. I. (2003). Neuroimaging studies of amygdala function in anxiety disorders. *Ann. N.Y. Acad. Sci.* 985, 389–410. doi: 10.1111/j.1749-6632.2003.tb07096.x
- Resendez, S. L., Kuhnmuensch, M., Krzywosinski, T., and Aragona, B. J. (2012). K-Opioid receptors within the nucleus accumbens shell mediate pair bond maintenance. *J. Neurosci.* 32, 6771–6784. doi: 10.1523/JNEUROSCI.5779-11.2012
- Ressler, K. J., and Mayberg, H. S. (2007). Targeting abnormal neural circuits in mood and anxiety disorders: from the laboratory to the clinic. *Nat. Neurosci.* 10, 1116–1124. doi: 10.1038/nn1944
- Reynolds, H. H. (1963). Effect of rearing and habitation in social isolation on performance of an escape task. *J. Comp. Physiol. Psychol.* 56, 520–25.
- Riby, D. M. (2013). *The Interplay Between Anxiety and Social Functioning in Williams Syndrome*. Springer. Available online at: <http://link.springer.com/epub-prod1.hul.harvard.edu/article/10.1007%2F978-1-4939-913-1-13> (Accessed December 31).
- Riby, D. M., Hancock, P. J. B., Jones, N., and Hanley, M. (2013). Spontaneous and cued gaze-following in autism and williams syndrome. *J. Neurodev. Disord.* 5, 13. doi: 10.1186/1866-1955-5-13.
- Richardson, M. P., Strange, B. A., and Dolan, R. J. (2004). Encoding of emotional memories depends on amygdala and hippocampus and their interactions. *Nat. Neurosci.* 7, 278–285. doi: 10.1038/nn1190
- Rickels, K., Zaninelli, R., McCafferty, J., Bellew, K., Iyengar, M., and Sheehan, D. (2003). Paroxetine treatment of generalized anxiety disorder: a double-blind, placebo-controlled study. *Am. J. Psychiatry* 160, 749–756. doi: 10.1176/appi.ajp.160.4.749
- Rodebaugh, T. L., Holaway, R. M., and Heimberg, R. G. (2004). The treatment of social anxiety disorder. *Clin. Psychol. Rev.* 24, 883–908. doi: 10.1016/j.cpr.2004.07.007
- Rodgers, R. J. (1997). Animal models of anxiety: an ethological perspective. *Braz. J. Med. Biol. Res.* 30, 289–304. doi: 10.1590/S0100-879X1997000300002
- Roozendaal, B., McEwen, B. S., and Chattarji, S. (2009). Stress, memory and the amygdala. *Nat. Rev. Neurosci.* 10, 423–433. doi: 10.1038/nrn2651
- Rosvold, H. E., Mirsky, A. F., and Pribam, K. H. (1954). Influence of amygdectomy on social behavior in monkeys. *J. Comp. Physiol. Psychol.* 47, 173–178.
- Rudolph, U., and Möhler, H. (2004). Analysis of gabaa receptor function and dissection of the pharmacology of benzodiazepines and general anesthetics through mouse genetics. *Annu. Rev. Pharmacol. Toxicol.* 44, 475–498. doi: 10.1146/annurev.pharmtox.44.101802.121429
- Rushworth, M. F. S., Mars, R. B., and Sallet, J. (2013). Are there specialized circuits for social cognition and are they unique to humans? *Curr. Opin. Neurobiol.* 23, 436–442. doi: 10.1016/j.conb.2012.11.013
- Sah, P., Faber, E. S., Lopez De Armentia, M., and Power, J. (2003). The amygdaloid complex: anatomy and physiology. *Physiol. Rev.* 83, 803–834. doi: 10.1152/physrev.00002.2003
- Saudou, F., Amara, D. A., Dierich, A., LeMeur, M., Ramboz, S., Segu, L., et al. (1994). Enhanced aggressive behavior in mice lacking 5-HT1B receptor. *Science* 265, 1875–78.
- Schneier, F. R. (2006). Social anxiety disorder. *N. Engl. J. Med.* 355, 1029–1036. doi: 10.1056/NEJMcp060145

- Schonfeld, W. H., Verboncoeur, C. J., Fifer, S. K., Lipschutz, R. C., Lubeck, D. P., and Buesching, D. P. (1997). The functioning and well-being of patients with unrecognized anxiety disorders and major depressive disorder. *J. Affect. Disord.* 43, 105–119.
- Shader, R. I., and Greenblatt, D. J. (1993). Use of benzodiazepines in anxiety disorders. *N. Engl. J. Med.* 328, 1398–1405. doi: 10.1056/NEJM199305133281907
- Shepherd, J. K., Grewal, S. S., Fletcher, A., Bill, D. J., and Dourish, C. T. (1994). Behavioural and pharmacological characterisation of the elevated 'zero-maze' as an animal model of anxiety. *Psychopharmacology* 116, 56–64.
- Shin, L. M., and Liberzon, I. (2009). The neurocircuitry of fear, stress, and anxiety disorders. *Neuropsychopharmacology* 35, 169–191. doi: 10.1038/npp.2009.83
- Silverman, J. L., Yang, M., Lord, C., and Crawley, J. N. (2010). behavioural phenotyping assays for mouse models of autism. *Nat. Rev. Neurosci.* 11, 490–502. doi: 10.1038/nrn2851
- Simiand, J., Keane, P. E., and Morre, M. (1984). The staircase test in mice: a simple and efficient procedure for primary screening of anxiolytic agents. *Psychopharmacology* 84, 48–53.
- Simon, N., Guillon, C., Fabio, K., Heindel, N., Lu, S.-F., Miller, M., et al. (2008). Vasopressin antagonists as anxiolytics and antidepressants: recent developments. *Recent Pat. CNS Drug Discov.* 3, 77–93. doi: 10.2174/157488908784534586
- Simonoff, E., Pickles, A., Charman, T., Chandler, S., Loucas, T., and Baird, G. (2008). Psychiatric disorders in children with autism spectrum disorders: prevalence, comorbidity, and associated factors in a population-derived sample. *J. Am. Acad. Child Adolesc. Psychiatry* 47, 921–929. doi: 10.1097/CHI.0b013e318179964f
- Sokolowski, M. B. (2010). Social interactions in 'simple' model systems. *Neuron* 65, 780–794. doi: 10.1016/j.neuron.2010.03.007
- Soliman, G. S. H., and Trüper, H. G. (1982). *Halobacterium pharaonis* Sp. Nov., a new, extremely haloalkaliphilic archaeobacterium with low magnesium requirement. *Zentralblatt Für Bakteriologie Mikrobiologie Und Hygiene: I. Abt. Originale C: Allgemeine, Angewandte Und Ökologische Mikrobiologie* 3, 318–329. doi: 10.1016/S0721-9571(82)80045-8
- Spielberger, C. D., Gorsuch, R. L., Lushene, R., Vagg, P. R., and Jacobs, G. A. (1983). *Manual for the State-Trait Anxiety Inventory*. Palo Alto, CA: Consulting Psychologists Press.
- Srinivasan, J., Kaplan, F., Ajredini, R., Zachariah, C., Alborn, H. T., Teal, P. E. A., et al. (2008). A blend of small molecules regulates both mating and development in *Caenorhabditis elegans*. *Nature* 454, 1115–1118. doi: 10.1038/nature07168
- Stein, M., Simmons, A., Feinstein, J., and Paulus, M. (2007). Increased amygdala and insula activation during emotion processing in anxiety-prone subjects. *Am. J. Psychiatry* 164, 318–327. doi: 10.1176/appi.ajp.164.2.318
- Stein, M. B., Liebowitz, M. R., Lydiard, R., Pitts, C. D., Bushnell, W., and Gergel, I. (1998). Paroxetine treatment of generalized social phobia (social anxiety disorder): a randomized controlled trial. *JAMA* 280, 708–713. doi: 10.1001/jama.280.8.708
- Stein, M. B., and Stein, D. J. (2008). Social anxiety disorder. *Lancet* 371, 1115–1125. doi: 10.1016/S0140-6736(08)60488-2
- Stinton, C., Elison, S., and Howlin, P. (2010). Mental health problems in adults with williams syndrome. *Am. J. Intellect. Dev. Disabil.* 115, 3–18. doi: 10.1352/1944-7558-115.1.3
- Stuber, G. D., Sparta, D. R., Stamatakis, A. M., van Leeuwen, W. A., Hardjoprajitno, J. E., Cho, S., et al. (2011). Excitatory transmission from the amygdala to nucleus accumbens facilitates reward seeking. *Nature* 475, 377–380. doi: 10.1038/nature10194
- Thompson, R. R., George, K., Walton, J. C., Orr, S. P., and Benson, J. (2006). Sex-specific influences of vasopressin on human social communication. *Proc. Natl. Acad. Sci. U.S.A.* 103, 7889–7894. doi: 10.1073/pnas.0600406103
- Ting, J. T., and Feng, G. (2011). Neurobiology of obsessive-compulsive disorder: insights into neural circuitry dysfunction through mouse genetics. *Curr. Opin. Neurobiol.* 21, 842–848. doi: 10.1016/j.conb.2011.04.010
- Tobin, V. A., Hashimoto, H., Wacker, D. W., Takayanagi, Y., Langnaese, K., Caqueneau, C., et al. (2010). An intrinsic vasopressin system in the olfactory bulb is involved in social recognition. *Nature* 464, 413–417. doi: 10.1038/nature08826
- Todd, R. M., and Anderson, A. K. (2009). Six degrees of separation: the amygdala regulates social behavior and perception. *Nat. Neurosci.* 12, 1217–1218. doi: 10.1038/nrn1009-1217
- Toth, I., Neumann, I. D., and Slattery, D. A. (2012). Social fear conditioning: a novel and specific animal model to study social anxiety disorder. *Neuropsychopharmacology* 37, 1433–1443. doi: 10.1038/npp.2011.329
- Tye, K. M., and Deisseroth, K. (2012). Optogenetic investigation of neural circuits underlying brain disease in animal models. *Nat. Rev. Neurosci.* 13, 251–266. doi: 10.1038/nrn3171
- Tye, K. M., Prakash, R., Kim, S.-Y., Fenno, L. E., Grosenick, L., Zarabi, H., et al. (2011). Amygdala circuitry mediating reversible and bidirectional control of anxiety. *Nature* 471, 358–362. doi: 10.1038/nature09820
- Van der Linden, G. J., Stein, D. J., and van Balkom, A. J. (2000). The efficacy of the selective serotonin reuptake inhibitors for social anxiety disorder (social phobia): a meta-analysis of randomized controlled trials. *Int. Clin. Psychopharmacol.* 15(Suppl. 2), S15–S23.
- Viviani, D., Charlet, A., van den Burg, E., Robinet, C., Hurni, N., Abatis, M., et al. (2011). Oxytocin selectively gates fear responses through distinct outputs from the central amygdala. *Science* 333, 104–107. doi: 10.1126/science.1201043
- Wang, Z., and Aragona, B. J. (2004). Neurochemical regulation of pair bonding in male prairie voles. *Physiol. Behav.* 83, 319–328. doi: 10.1016/j.physbeh.2004.08.024
- White, S. W., Oswald, D., Ollendick, T., and Sachill, L. (2009). Anxiety in children and adolescents with autism spectrum disorders. *Clin. Psychol. Rev.* 29, 216–229. doi: 10.1016/j.cpr.2009.01.003
- Whiten, A., Goodall, J., McGrew, W. C., Nishida, T., Reynolds, V., Sugiyama, Y., et al. (1999). Cultures in chimpanzees. *Nature* 399, 682–685. doi: 10.1038/21415
- Willner, P. (1984). The validity of animal models of depression. *Psychopharmacology* 83, 1–16. doi: 10.1007/BF00427414
- Winslow, J. T. (2003). Mouse social recognition and preference. *Curr. Protoc. Neurosci.* Chapter 8: Unit 8.16. doi: 10.1002/0471142301.n0816s22
- Wittchen, H. U., Nelson, C. B., and Lachner, G. (1998). Prevalence of mental disorders and psychosocial impairments in adolescents and young adults. *Psychol. Med.* 28, 109–126.
- Wohlfarth, T. D., van den Brink, W., Ormel, J., Koeter, M. W., and Oldehinkel, A. J. (1993). The relationship between social dysfunctioning and psychopathology among primary care attenders. *Br. J. Psychiatry* 163, 37–44. doi: 10.1192/bjp.163.1.37
- Wu, L.-J., Kim, S. S., and Zhuo, M. (2008). Molecular targets of anxiety: from membrane to nucleus. *Neurochem. Res.* 33, 1925–1932. doi: 10.1007/s11064-008-9679-8
- Yizhar, O. (2012). Optogenetic insights into social behavior function. *Biol. Psychiatry* 71, 1075–1080. doi: 10.1016/j.biopsych.2011.12.029
- Yizhar, O., Fenno, L. E., Prigge, M., Schneider, F., Davidson, T. J., O'Shea, D. J., et al. (2011). Neocortical excitation/inhibition balance in information processing and social dysfunction. *Nature* 477, 171–178. doi: 10.1038/nature10360
- Young, L. J., and Wang, Z. (2004). The neurobiology of pair bonding. *Nat. Neurosci.* 7, 1048–1054. doi: 10.1038/nn1327
- Zhang, F., Aravanis, A. M., Adamantidis, A., de Lecea, L., and Deisseroth, K. (2007a). Circuit-breakers: optical technologies for probing neural signals and systems. *Nat. Rev. Neurosci.* 8, 577–581. doi: 10.1038/nrn2192
- Zhang, F., Wang, L.-P., Brauner, M., Liewald, J. F., Kay, K., Watzke, N., et al. (2007b). Multimodal fast optical interrogation of neural circuitry. *Nature* 446, 633–639. doi: 10.1038/nature05744

Conflict of Interest Statement: The authors declare that the research was conducted in the absence of any commercial or financial relationships that could be construed as a potential conflict of interest.

Received: 28 February 2014; accepted: 20 June 2014; published online: 16 July 2014.
 Citation: Allsop SA, Vander Weele CM, Wichmann R and Tye KM (2014) Optogenetic insights on the relationship between anxiety-related behaviors and social deficits. *Front. Behav. Neurosci.* 8:241. doi: 10.3389/fnbeh.2014.00241
 This article was submitted to the journal *Frontiers in Behavioral Neuroscience*.
 Copyright © 2014 Allsop, Vander Weele, Wichmann and Tye. This is an open-access article distributed under the terms of the Creative Commons Attribution License (CC BY). The use, distribution or reproduction in other forums is permitted, provided the original author(s) or licensor are credited and that the original publication in this journal is cited, in accordance with accepted academic practice. No use, distribution or reproduction is permitted which does not comply with these terms.