



## Correction

# Correction: Association of the Plasma and Tissue Riboflavin Levels with C20orf54 Expression in Cervical Lesions and Its Relationship to HPV16 Infection

## The PLOS ONE Staff

In the first paragraph of the Results section, there is an error in the penultimate sentence. Please see the corrected sentence below:

"The average blood riboflavin level in high tumor stage patients ( $\geq$ IIb) was  $182.01 \pm 89.43$  ug/L, which was significantly lower than in patients with low tumor stage ( $\leq$ IIa) ( $277.25 \pm 34.56$  ug/L)."

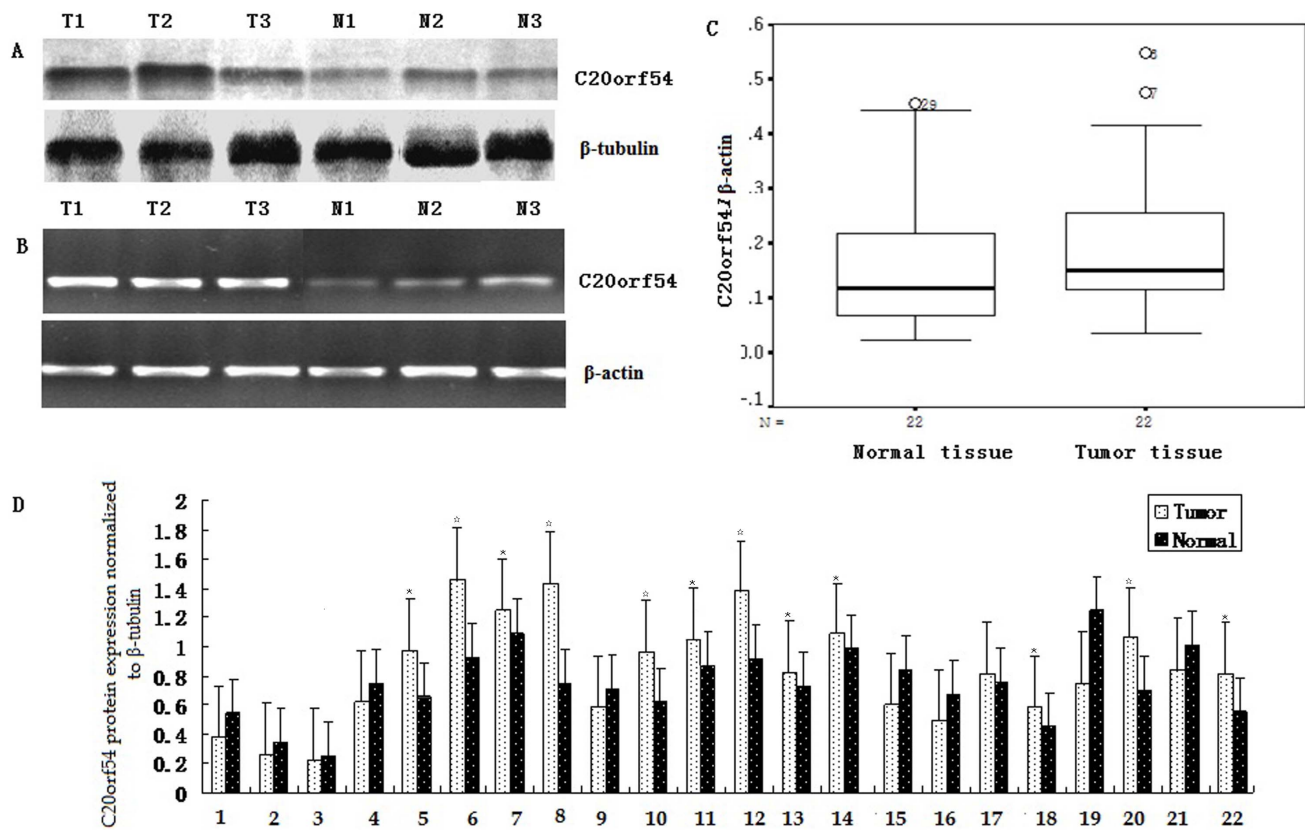
There is an error in the Figure 3 legend. Please see the figure and the corrected legend below:

---

**Citation:** The PLOS ONE Staff (2014) Correction: Association of the Plasma and Tissue Riboflavin Levels with C20orf54 Expression in Cervical Lesions and Its Relationship to HPV16 Infection. PLoS ONE 9(7): e103377. doi:10.1371/journal.pone.0103377

**Published:** July 16, 2014

**Copyright:** © 2014 The PLOS ONE Staff. This is an open-access article distributed under the terms of the Creative Commons Attribution License, which permits unrestricted use, distribution, and reproduction in any medium, provided the original author and source are credited.



**Figure 3. higher-expression of C20orf54 was detected in CSCC tissue by Western blot (A) and qRT-PCR (B).** A, Representative results of C20orf54 and  $\beta$ -tubulin protein was described in CSCC (T) and matched normal tissues (N) by western blot. B, Representative results of C20orf54 and  $\beta$ -actin mRNA was examined in CSCC (T) and corresponding normal tissues (N) by qRT-PCR. C, Box plot, the expression of C20orf54 mRNA was significantly higher in CSCC than that matched tissue ( $0.21 \pm 0.14$  vs  $0.16 \pm 0.12$ ;  $n = 22$ ,  $P < 0.05$ ). D, Bar chart for relative expression of C20orf54 protein in CSCC and matched tissue ( $0.93 \pm 0.41$  vs  $0.80 \pm 0.36$ ;  $n = 22$  repeat three times in each sample, \* indicates  $P < 0.05$ , ☆ indicates  $P < 0.01$ ). doi:10.1371/journal.pone.0079937.g003

## Reference

1. Aili A, Hasim A, Kelimu A, Guo X, Mantimin B, et al. (2013) Association of the Plasma and Tissue Riboflavin Levels with C20orf54 Expression in Cervical Lesions and Its Relationship to HPV16 Infection. *PLoS ONE* 8(11): e79937. doi:10.1371/journal.pone.0079937