

ARTICLE

Received 31 Jan 2014 | Accepted 19 Jun 2014 | Published 17 Jul 2014

DOI: 10.1038/ncomms5457

OPEN

# Evolutionary conservation of cold-induced antisense RNAs of *FLOWERING LOCUS C* in *Arabidopsis thaliana* perennial relatives

Loren Castaings<sup>1,†</sup>, Sara Bergonzi<sup>1</sup>, Maria C. Albani<sup>1,2</sup>, Ulla Kemi<sup>1,3</sup>, Outi Savolainen<sup>3,4</sup> & George Coupland<sup>1</sup>

Antisense RNA (asRNA) COOLAIR is expressed at *A. thaliana* *FLOWERING LOCUS C* (*FLC*) in response to winter temperatures. Its contribution to cold-induced silencing of *FLC* was proposed but its functional and evolutionary significance remain unclear. Here we identify a highly conserved block containing the COOLAIR first exon and core promoter at the 3' end of several *FLC* orthologues. Furthermore, asRNAs related to COOLAIR are expressed at *FLC* loci in the perennials *A. alpina* and *A. lyrata*, although some splicing variants differ from *A. thaliana*. Study of the *A. alpina* orthologue, *PERPETUAL FLOWERING 1* (*PEP1*), demonstrates that AaCOOLAIR is induced each winter of the perennial life cycle. Introduction of *PEP1* into *A. thaliana* reveals that AaCOOLAIR *cis*-elements confer cold-inducibility in this heterologous species while the difference between *PEP1* and *FLC* mRNA patterns depends on both *cis*-elements and species-specific *trans*-acting factors. Thus, expression of COOLAIR is highly conserved, supporting its importance in *FLC* regulation.

<sup>1</sup>Max Planck Institute for Plant Breeding Research, Carl von Linné Weg 10, D-50829 Cologne, Germany. <sup>2</sup>Botanical Institute, University of Cologne, Zùlpicher Strasse 47B, D-50674 Cologne, Germany. <sup>3</sup>Department of Biology, University of Oulu, PO Box 3000, FIN-90014 Oulu, Finland. <sup>4</sup>Biocenter Oulu, University of Oulu, FIN-90014 Oulu, Finland. † Present address: Biochimie et Physiologie Moléculaire des Plantes, Centre National de la Recherche Scientifique Unité Mixte de Recherche 5004, Institut de Biologie Intégrative des Plantes, 2 place Pierre Viala, F-34060 Montpellier Cedex 2, France. Correspondence and requests for materials should be addressed to G.C. (email: coupland@mpipz.mpg.de).

Many plant species growing in temperate climates flower in response to prolonged low winter temperatures, a process called vernalization<sup>1,2</sup>. In *Arabidopsis thaliana* FLOWERING LOCUS C (*FLC*) plays a central role in vernalization requirement, encoding a MADS box transcription factor that delays flowering until the plant is exposed to low temperatures<sup>3,4</sup>. On extended exposure to cold *FLC* mRNA level is progressively reduced, so that after several weeks it reaches trough levels<sup>3</sup>. On return to warmer temperatures, mimicking spring conditions, *FLC* repression is maintained and flowering occurs.

Repression of *FLC* by cold involves epigenetic regulation. Histone modifications, particularly trimethylation of lysine 27 on histone 3 (H3K27me3), increase at *FLC* during vernalization through the activity of Polycomb Repressive Complex 2 (PRC2) and later spread across the gene<sup>5,6</sup>. This mechanism requires accessory components of the PRC2 that are cold-induced, such as PHD-finger protein VERNALIZATION INSENSITIVE 3 (VIN3)<sup>7–9</sup>. VIN3 as well as core PRC2 proteins such as VERNALIZATION 2 (VRN2) are required to maintain *FLC* in a repressed state after vernalization<sup>7,9,10</sup>.

Repression of *FLC* is also proposed to involve long non-coding RNAs (lncRNAs) expressed at the locus in response to cold<sup>11</sup>. A sense lncRNA called COLDAIR is expressed during vernalization from a region in the long first intron<sup>12</sup> termed the vernalization response element (VRE)<sup>13</sup>. The VRE is downstream of the nucleation point at which chromatin modifications initially occur<sup>5</sup> and was previously shown to be important for stable silencing of *FLC*<sup>13,14</sup>. COLDAIR binds PRC2 components and promotes *FLC* stable repression<sup>12</sup>. Earlier during vernalization, before expression of COLDAIR, a set of alternatively spliced and polyadenylated antisense RNAs (asRNAs) termed COOLAIR are transiently expressed from the 3' end of *FLC*<sup>15–18</sup>. Fusion of the COOLAIR promoter at the 3' end of a green fluorescent protein (GFP) transgene can cause partial repression of GFP expression during vernalization<sup>15</sup>. COOLAIR has been shown to participate in *FLC* downregulation by the autonomous pathway but its function in the cold-induced silencing of *FLC* is still unclear<sup>15,16,19</sup>. Indeed, *FLC* marker genes lacking the COOLAIR promoter silence in cold<sup>14</sup> and *FLC* insertion alleles from which COOLAIR expression is not detectable are also silenced by vernalization<sup>19</sup>. Recently, COOLAIR transcription was shown to be downregulated by the formation of a RNA–DNA hybrid within its promoter. The so-called R-loop is stabilized by the homeodomain protein AtNDX (ref. 20).

*FLC* homologues are found throughout the Brassicaceae family, of which *A. thaliana* is a member. Expression of some of these homologues has been shown to be reduced by vernalization<sup>21–26</sup> and genetic evidence demonstrates that some act as floral repressors<sup>21,27</sup>. In addition to their role in vernalization, differences in expression of *FLC* orthologues can contribute to diversification of life history within the Brassicaceae. *A. thaliana* is a representative monocarpic annual species of the family that flowers only once and then dies after seed set. However, other members of the family are polycarpic perennials and undergo multiple reproductive episodes during their life. Interestingly, in the perennial species *Arabis alpina*, *A. halleri*, *Cardamine flexuosa* and *A. lyrata* the expression patterns of *FLC* orthologues differ from *A. thaliana FLC*. The *FLC* genes in the perennials are not stably repressed by vernalization but their expression increases after return to warm temperatures<sup>21,24,26,28</sup>. The *A. alpina FLC* orthologue, PERPETUAL FLOWERING 1 (*PEP1*), has additional perennial specific functions. For example, the increase in *PEP1* mRNA after vernalization confers the return to vegetative growth after flowering until plants are exposed to low temperatures the following winter<sup>21</sup>.

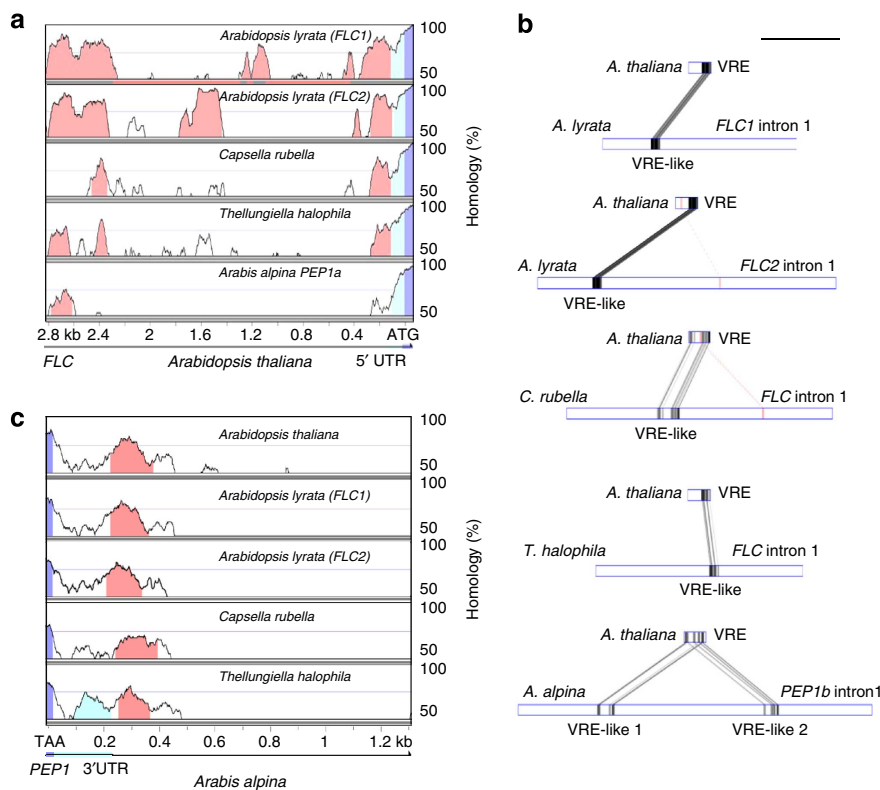
Comparison of transcriptional regulatory regions from several closely related species has been employed to identify conserved *cis*-regulatory elements in different taxa<sup>29–31</sup> including plants<sup>32–34</sup>. In contrast, the extent to which lncRNAs diverge during evolution has not been extensively analysed in plants, although in other systems such as mammals they appear to evolve rapidly between species<sup>35,36</sup>.

To better understand what drives the conserved cold-regulation of *FLC* orthologues and to assess the functional significance of lncRNA at this locus, we combine phylogenetic shadowing of *FLC cis*-regulatory sequences with structural and temporal analysis of antisense transcription, especially at *PEP1*, the best-characterized *FLC* orthologue. Our data reveal that the 3' end sequences at *FLC* orthologues are more conserved than the 5' promoter regions and that they promote antisense transcription at *A. alpina PEP1* and *A. lyrata FLC* genes similar to what was observed in *A. thaliana FLC*. Introduction of *PEP1* into *A. thaliana* shows that it contains all the *cis*-acting sequences required for cold repression and COOLAIR expression in this heterologous species. In contrast, the reactivation of *PEP1* after vernalization seems to involve different *trans*-acting factors between *A. alpina* and *A. thaliana*. Evolutionary conservation of COOLAIR and its seasonal expression in perennial *A. alpina* supports a significant role for this asRNA in repression of *FLC* gene expression during vernalization.

## Results

**Conserved sequence blocks at the 3' end of *FLC* orthologues.** In *A. thaliana* cold-induced repression of *FLC* mRNA requires *cis*-regulatory sequences in the promoter and first intron<sup>13,14</sup>. Whether these *cis*-regulatory elements are evolutionarily conserved was tested by comparing genomic sequences of *FLC* orthologues from a range of Brassicaceae species (Methods; Fig. 1; Supplementary Figs 1–3). With the exception of *PEP1* in *A. alpina*, *FLC* orthologues from *A. lyrata*, *Capsella rubella* and *Thellungiella halophila* exhibit the same gene structure as *A. thaliana FLC*. *A. alpina PEP1* harbours a tandem duplication (*PEP1a* and *PEP1b*) containing part of the promoter, the first exon and part of intron 1 (Fig. 2a; ref. 21). The two copies of exon 1 have individual transcriptional start sites and each is spliced to the unique exon 2 giving rise to two overlapping transcripts<sup>37</sup>. Two tandemly arranged full-length copies of *FLC*, called *AIFLC1* and *AIFLC2*, are present in *A. lyrata*, and both are transcriptionally active<sup>26,38</sup>. Promoter sequences between the translational start site (ATG) of *FLC* and the end of the next upstream gene were compared revealing two main blocks of homology (Fig. 1a and Supplementary Fig. 1). The first block was ~400 bp long and included the proximal promoter as well as the 5' untranslated leader. In *A. alpina*, homology in this region was reduced and mainly restricted to the untranslated leaders of *PEP1a* and *PEP1b* (Supplementary Fig. 1g). The second region was ~2 kb further upstream, and in *A. alpina* was found only in *PEP1a*. Apart from these two conserved blocks, the *FLC* promoter has diverged rapidly during evolution, even between the closely related species *A. thaliana* and *A. lyrata*, as observed previously<sup>38</sup>.

Alignment of the intron 1 sequence of *FLC* with those of the orthologues showed that the extensive homology present in the closest species decreases in the more distantly related species until it is restricted to each end of the first intron and to the VRE (Supplementary Fig. 2a–e). These regions are important for *FLC* regulation by cold<sup>13,14</sup>. Sequences of the *FLC* orthologues showing homology to *A. thaliana* VRE were referred to as VRE-like and were found in all species examined (Fig. 1b). Interestingly, *A. alpina PEP1* carries two VRE-like copies in intron 1, AaVRE-like 1 and AaVRE-like 2, both of which are



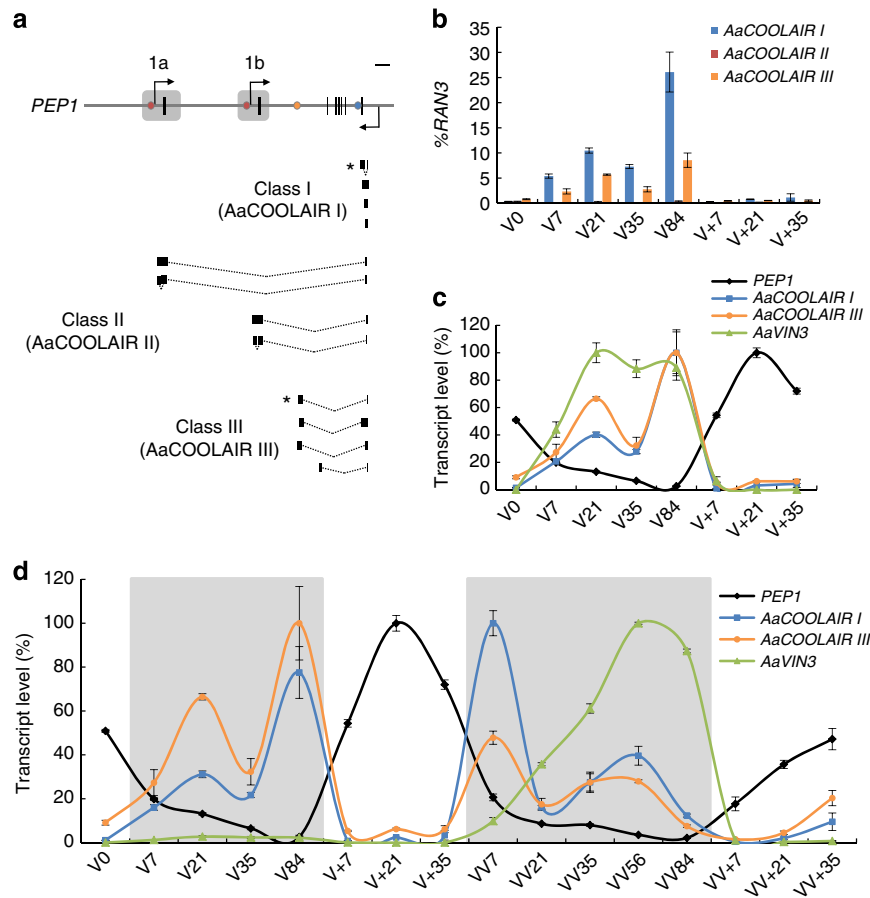
**Figure 1** | Conservation and divergence of non-coding regulatory cis-elements among FLC orthologues. **(a)** mVista pair-wise alignments of the 5' intergenic regions of FLC orthologues. From top to bottom, *A. lyrata* FLC1, *A. lyrata* FLC2, *C. rubella* FLC, *T. halophila* FLC and *A. alpina* PEP1a aligned to *A. thaliana* FLC. Alignment of PEP1b and *A. thaliana* FLC is presented in Supplementary Fig. 1f. **(b)** GATA pair-wise alignment of *A. thaliana* VRE to the first intron of each of the FLC orthologues mentioned in **a**. Regions showing homology to the VRE are annotated as VRE-like. For *A. alpina* PEP1, VRE-like sequences were detected only in the region spanning exon 1b and exon 2 (intron 1 of PEP1b). Scale bar, 1 kb. **(c)** mVista pair-wise alignment of the 3' regions of FLC orthologues. PEP1 3' end was aligned to the 3' intergenic regions of *A. thaliana* FLC, *A. lyrata* FLC1, *A. lyrata* FLC2, *C. rubella* and *T. halophila* FLC orthologues. Coloured areas in mVista graphs illustrate stretches of homology greater than 75% identity at the nucleotide level. Pink, regions of homology in the promoter region (**a**) or at the 3' end (**c**); dark blue, exonic sequences; light blue, untranslated region. Grey and pink boxes in GATA plots are homologous regions and inverted homologous regions respectively (the darker the box, the higher the similarity).

located downstream of exon 1b. The COLDAIR promoter is contained within the most 5' 100 bp of the VRE in *A. thaliana*<sup>12,13</sup>, and was the least conserved part of the VRE-like sequences, showing no detectable conservation even between *A. thaliana* and *A. lyrata* (Fig. 1b and Supplementary Fig. 2a,b).

The FLC 3' end harbours a promoter that drives the expression of the non-coding COOLAIR asRNA<sup>15</sup>. Alignment of the 3' end of FLC to those of the orthologues showed strong conservation of a 150 bp block after the polyadenylation site (Fig. 1c and Supplementary Fig. 3). Strikingly, this 3' region is more widely conserved among the analysed species than either the 5' intergenic region or first intron sequences implicated in FLC transcriptional regulation. In *A. thaliana* this evolutionarily conserved block is present within the COOLAIR first exon, the region bound by AtNDX to stabilize the R-loop and regulate COOLAIR expression<sup>20</sup>. Conservation of the 3' ends of orthologous plant genes has not been extensively analysed, so to determine whether the conservation at this location of FLC is unusual, 10 other genes encoding MADS box transcription factors implicated in reproductive development were examined. The intergenic regions at the 3' ends of orthologues from *A. lyrata*, *C. rubella*, *T. halophila*, *A. alpina* and *A. thaliana* were aligned (Supplementary Fig. 4). For nine of the genes studied, conservation was observed only in the transcribed untranslated region present at the 3' end of the cDNA, and this reduced steeply outside of the transcribed region, especially in more distantly related species. Therefore, strong conservation after the 3' end of

the transcribed region, similar to that present in FLC, is not detected among these genes. However, the remaining gene, SHATTERPROOF2 (SHP2), exhibited conservation beyond the 3' UTR that was similar to that observed for FLC. Interestingly, a potential natural antisense lncRNA is also annotated at its 3' end and named At2g42835 (Supplementary Fig. 4).

**Antisense transcription occurs at PEP1 3' end.** The highly conserved 150-bp block present at the 3' end of all FLC orthologues suggested that asRNAs might also be transcribed at these genes. The presence of antisense transcription was therefore tested at *A. alpina* PEP1, the most characterized FLC orthologue. Several forms of PEP1 asRNA were detected by '3' tiling' RT-PCR and 3' RACE PCR (see Methods and Fig. 2a). The detected asRNAs were assigned to classes according to their structures and named based on the nomenclature used for *A. thaliana* COOLAIR<sup>18</sup>. Class I and II *A. alpina* PEP1 asRNAs have similar structures to those of *A. thaliana* COOLAIR<sup>15,16,18</sup>, and were named AaCOOLAIR I and AaCOOLAIR II, respectively. Class I asRNAs are polyadenylated within intron 6 of PEP1, while those in Class II are spliced to a distal location in the PEP1 promoter. We further tested whether AaCOOLAIR II are polyadenylated within the promoter of PEP1a or PEP1b by making use of the accession Dorfertal (Dor), which contains polymorphisms in these regions<sup>37</sup>. Performing '3' tiling' RT-PCR for Dor PEP1 showed that class II asRNAs terminate in the promoter regions of



**Figure 2** | Cold-induced antisense non-coding RNAs are transcribed at the *PEP1* locus in *A. alpina* and follow a seasonal pattern. **(a)** Class I (AaCOOLAIR I), class II (AaCOOLAIR II) and class III (AaCOOLAIR III) antisense RNAs transcribed at *PEP1* locus. Black boxes are exons; lines are introns and other non-coding regions. Grey boxes indicate the region that is duplicated in tandem. Arrows indicate transcriptional start sites at *PEP1*. Dots show *PEP1* antisense transcript polyadenylation sites; blue, Class I; light orange, Class III; dark orange, Class II. Asterisks indicate the most abundant form among splicing variants obtained by 3' RACE (Classes I and III) or RT-qPCR product sequencing (Class II). Scale bar, 1 kb. **(b)** AaCOOLAIR I, II and III cold-inducibility. RT-qPCR on leaf RNA of *A. alpina* plants exposed to 0, 7, 21, 35 and 84 days of vernalization (V0, V7, V21, V35 and V84) followed by 7, 21 and 35 days of growth in normal growth temperatures (V + 7, V + 21 and V + 35). Transcript levels were expressed relative to those of the reference gene *RAN3*  $\pm$  s.d. ( $n = 3$  technical replicates). **(c)** AaCOOLAIR I, AaCOOLAIR III, *PEP1* and *AaVIN3* expression patterns in *A. alpina* leaves during the vernalization time course shown in **b**. Transcript levels were measured by RT-qPCR relative to those of the reference gene *RAN3*  $\pm$  s.d. ( $n = 3$  technical replicates). The maximum level of expression of each gene is set at 100%. **(d)** Seasonal expression patterns of *PEP1*, AaCOOLAIR I, AaCOOLAIR III and *AaVIN3* over two successive vernalization treatments. *A. alpina* plants were vernalized for 0, 7, 21, 35 and 84 days (V0, V7, V21, V35 and V84) followed by 7, 21 and 35 days of growth in normal temperature (V + 7, V + 21 and V + 35), then vernalized again for 7, 21, 35, 56 and 84 days (VV7, VV21, VV35, VV56 and VV84) and grown for 7, 21 and 35 more days in normal growth temperatures (VV + 7, VV + 21 and VV + 35). Grey areas indicate the cold treatments. Transcript levels were measured by RT-qPCR relative to those of the reference gene *RAN3*  $\pm$  s.d. ( $n = 3$  technical replicates). The maximum level of expression of each gene is set at 100%. A biological replicate is shown in Supplementary Fig. 8.

both *PEP1a* and *PEP1b* (Supplementary Fig. 5). A third class of *PEP1* asRNA (AaCOOLAIR III) not documented in *A. thaliana* was also isolated, and is polyadenylated in intron 1 in a region that shows no homology with *FLC* (Fig. 2a and Supplementary Fig. 2e). We further confirmed the conservation of antisense transcription at the 3' end of *FLC* orthologues by amplifying asRNA generated at *A. lyrata FLC1* and *FLC2* genes, both of which show homology to COOLAIR (Fig. 1c). Class I but not class II asRNA could be detected and harbour the typical splicing events of COOLAIR I asRNAs (Supplementary Fig. 6a).

In contrast to the detection of asRNAs, non-coding sense RNA corresponding to COLDAIR could not be amplified at *PEP1* after 5' RACE PCR using several sets of primers downstream of the VRE-like 1 and the VRE-like 2 in intron 1 (5' RACE 'Tiling PCR' in Supplementary Methods, Supplementary Table 1). Vernalized *A. thaliana FRI<sup>SF</sup> FLC* plants were also used as a

control but the previously described COLDAIR transcript<sup>12</sup> could not be reliably detected, suggesting that our vernalization conditions or methodology may not be optimal for the detection of these non-polyadenylated transcripts. Therefore, COLDAIR could not be detected in *A. alpina*, but its presence cannot be excluded.

**Induction of AaCOOLAIR by cold in *A. alpina*.** The levels of the different AaCOOLAIR forms and their cold-inducibility were tested by RT-qPCR in *A. alpina* leaves during vernalization (Fig. 2b). AaCOOLAIR I and III were the most abundant forms. They showed two peaks of expression during cold exposure, after 21 and 84 days in the cold, and fell drastically when the plants were returned to higher temperatures after vernalization. Cold-inducibility seems to be reminiscent of class I asRNA at *FLC*

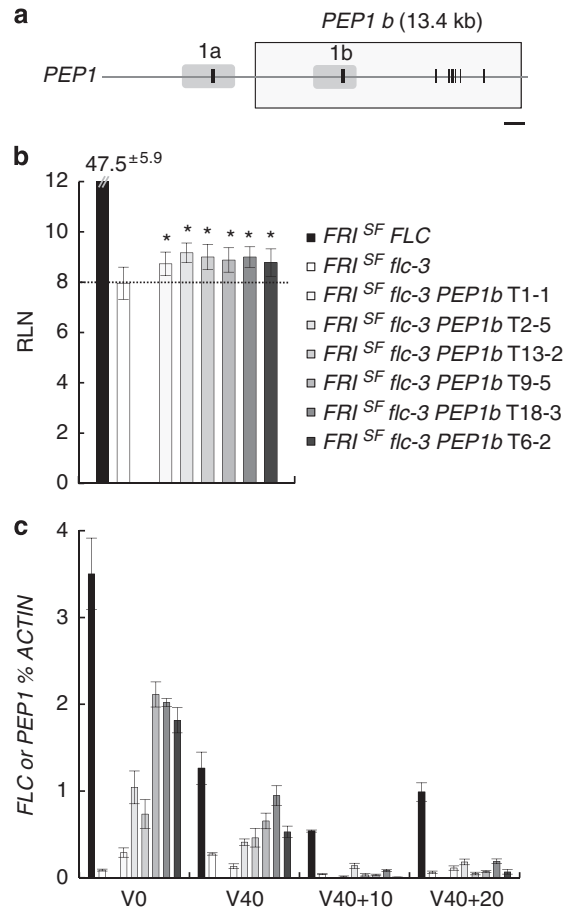
orthologues as it was also observed for *A. lyrata* AICOOLAIR I (Supplementary Fig. 6b). By contrast, class II asRNA could not be reliably amplified in *A. lyrata*. AaCOOLAIR II was detected but expressed at a very low level with no significant change in abundance during vernalization (Fig. 2b).

In *A. thaliana* transcription of *VIN3* is also induced during vernalization and is required for epigenetic silencing of *FLC*<sup>7</sup>. The *A. alpina* *VIN3* orthologue was isolated based on sequence homology and showed conservation of synteny with *A. thaliana* (Supplementary Fig. 7). *AaVIN3* mRNA increased during cold, as observed in *A. thaliana*, and fell steeply at the end of vernalization (Fig. 2c).

### Seasonal cycling of *AaVIN3* mRNA and AaCOOLAIR in *A. alpina*.

*PEP1* expression repeatedly responds to seasonal changes in temperature contributing to the perennial life cycle of *A. alpina*<sup>21</sup>. Whether AaCOOLAIR I and III as well as *AaVIN3* have similar responses was tested. *A. alpina* plants were exposed to two successive vernalization treatments separated by 35 days at normal growth temperatures. Leaves were harvested at regular time intervals during the treatment (see Methods). As expected, *PEP1* mRNA levels responded to changes in temperature, being downregulated during cold and upregulated when plants were transferred to warm temperatures (Fig. 2d, Supplementary Fig. 8). Interestingly, abundance of AaCOOLAIR I and III cycled inversely to *PEP1* mRNA supporting the idea that they play a role in *PEP1* repression. The timing of their maximal expression differed between the two cold treatments so that they reached peak level earlier in the second treatment than the first. *AaVIN3* mRNA levels were dynamically induced by cold during both vernalization treatments presumably promoting *PEP1* repression and the flowering of the plants during each following warm period (Fig. 2c,d, Supplementary Fig. 8). Interestingly, the induction was more than 10-fold stronger during the second cold treatment than the first. Therefore, expression of AaCOOLAIR and *AaVIN3* mRNA might be primed by the first vernalization treatment to respond more strongly during the second.

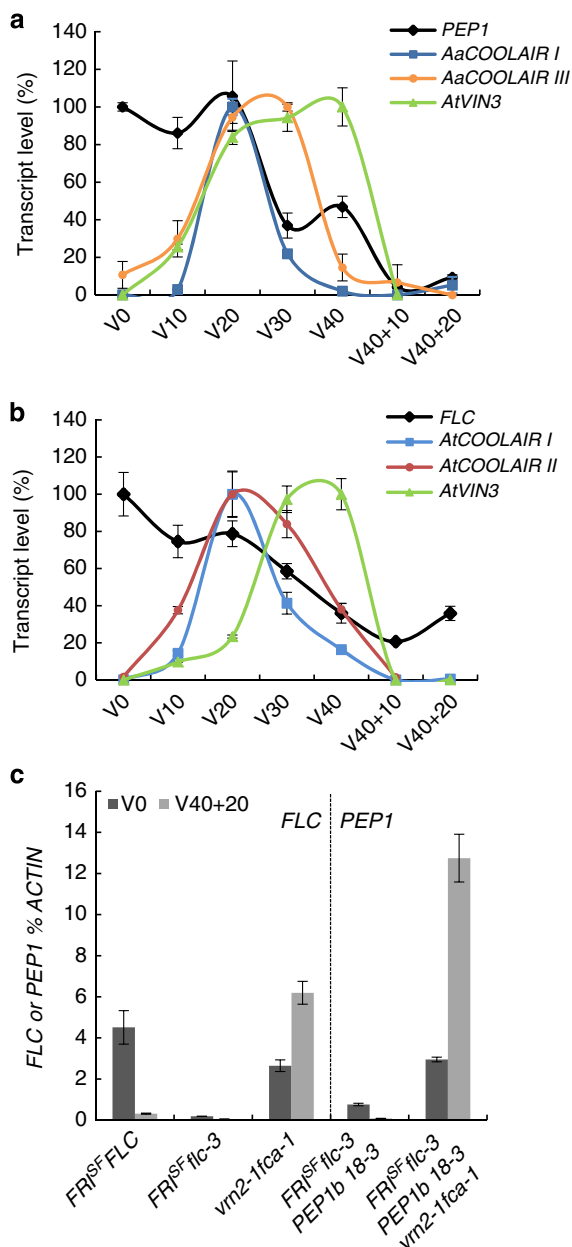
***PEP1b* is stably silenced by cold in transgenic *A. thaliana*.** To investigate whether the molecular mechanisms regulating expression of *FLC* orthologues are evolutionarily conserved, *A. alpina* *PEP1b* (Fig. 3a), the most highly expressed *A. alpina* *PEP1* gene<sup>37</sup> and the one containing the 3' sequences encoding AaCOOLAIR, was transferred into *A. thaliana* Columbia *FRI*<sup>SF</sup> *flc-3* (ref. 3). Transgenic *FRI*<sup>SF</sup> *flc-3* plants containing the *PEP1b* genomic fragment displayed a small but statistically significant ( $P < 0.005$ ) delay in flowering compared with the *FRI*<sup>SF</sup> *flc-3* progenitor line (Fig. 3b, Supplementary Table 2). By contrast, the control line *FRI*<sup>SF</sup> *FLC* that carries an active *FLC* gene flowered much later than *FRI*<sup>SF</sup> *flc-3* (Fig. 3b). *PEP1* mRNA was also expressed in *FRI*<sup>SF</sup> *flc-3* *PEP1b* transgenic lines at lower levels than *FLC* mRNA in the *FRI*<sup>SF</sup> *FLC* control plants (Fig. 3c, V0). These data suggest that the diverged *PEP1b* promoter might not be efficiently recognized in *A. thaliana* and cannot promote *PEP1* mRNA at the threshold level necessary to strongly delay flowering time. To test the effect of cold on *PEP1* mRNA level transgenic plants were vernalized for 40 days and subsequently transferred to warm temperatures for 20 days (Fig. 3c). *PEP1* mRNA levels were reduced during vernalization as observed for *FLC* mRNA in *FRI*<sup>SF</sup> *FLC* control plants (V40, Fig. 3c). Interestingly, in this heterologous species *PEP1b* mRNA level remained low when the transgenic plants were returned to normal growth temperatures after vernalization, similar to what is observed for *FLC* stable repression (V40 + 10, V40 + 20; Fig. 3c and Supplementary Fig. 9a) and in contrast to the unstable repression of *PEP1*



**Figure 3 |** Transcriptional activity of *PEP1b* in *A. thaliana* *FRI*<sup>SF</sup> *flc-3* *PEP1b* transgenic plants. **(a)** Schematic representation of *PEP1* locus represented as described in Fig. 2a. The rectangle indicates the extent of 13.4 kb *PEP1b* transgene transferred into *A. thaliana* *FRI*<sup>SF</sup> *flc-3* plants. Scale bar, 1 kb. **(b)** Flowering times of *A. thaliana* *FRI*<sup>SF</sup> *flc-3* *PEP1b* independent transformants, *FRI*<sup>SF</sup> *flc-3* parental line and *FRI*<sup>SF</sup> *FLC* control line as measured by rosette leaf number (RLN) at bolting  $\pm$  s.d. ( $n = 9$ –23 individuals). Asterisks indicate flowering time statistically different from the one of *FRI*<sup>SF</sup> *flc-3* plants (Student's *t*-test,  $P$  value  $< 0.005$ ). **(c)** *PEP1b* mRNA levels in *A. thaliana* *FRI*<sup>SF</sup> *flc-3* *PEP1b* independent transformants and *FLC* mRNA levels in the parental *FRI*<sup>SF</sup> *flc-3* line and the control *FRI*<sup>SF</sup> *FLC* line. Time points are before vernalization (V0), after 40 days of vernalization (V40), as well as after 40 days of vernalization followed by 10 or 20 days of growth at normal growth temperatures (V40 + 10 and V40 + 20). Transcript levels were measured by RT-qPCR relative to those of the reference gene *ACTIN*  $\pm$  s.d. ( $n = 3$  technical replicates). Panels **b** and **c** share colour-code legends.

found in *A. alpina*. However, the low level of expression of *PEP1b* in *A. thaliana* might also reduce the sensitivity of detection of reactivation after vernalization. Despite this reservation, the species-specific variation in *trans*-acting regulation is likely responsible for the differences in the stability of *PEP1* repression observed between *A. thaliana* and *A. alpina*.

**Epigenetic regulation of *PEP1* transgene in *A. thaliana*.** Whether *A. alpina* AaCOOLAIR was generated by mechanisms conserved in *A. thaliana* was examined. AaCOOLAIR was detected in the *FRI*<sup>SF</sup> *flc-3* *PEP1b* transformants during vernalization (Fig. 4a), suggesting that *trans*-acting factors present in *A. thaliana* can promote AaCOOLAIR expression, including



**Figure 4** | Epigenetic control of *PEP1b* in *Arabidopsis FRI<sup>SF</sup> flc-3 PEP1b* transgenic plants. **(a)** *PEP1b*, *AtVIN3* and *AaCOOLAIR I* and *III* expression in *FRI<sup>SF</sup> flc-3 PEP1b 18-3* transformant before vernalization (V0) after 10, 20, 30 or 40 days of vernalization (V10, V20, V30 or V40) and after 40 days of vernalization followed by 10 or 20 days of growth in normal temperature (V40 + 10, V40 + 20). **(b)** *FLC*, *AtVIN3*, *AtCOOLAIR I* and *II* expression in *FRI<sup>SF</sup> FLC* control plants during the vernalization time course described in **a**. In **a** and **b** mRNA levels were measured by RT-qPCR relative to those of the reference gene *ACTIN*  $\pm$  s.d. ( $n = 3$  technical replicates) and presented relative to the maximum level of expression of each gene, which is set as 100%. **(c)** *PEP1b* mRNA level before vernalization (V0) and after 40 days vernalization followed by 20 days of growth at normal temperature (V40 + 20) in *FRI<sup>SF</sup> flc-3 PEP1b 18-3* parental line and *FRI<sup>SF</sup> flc-3 PEP1b 18-3 vrn2-1 fca-1* plants. *PEP1b* mRNA level is compared with *FLC* mRNA in *FRI<sup>SF</sup> FLC*, *FRI<sup>SF</sup> flc-3* and *vrn2-1 fca-1* plants. mRNA levels were measured by RT-qPCR relative to those of the reference gene *ACTIN*  $\pm$  s.d. ( $n = 3$  technical replicates).

*AaCOOLAIR III* that is not found at *FLC*. In the control line *FRI<sup>SF</sup> FLC*, *AtCOOLAIR I* and *AtCOOLAIR II* were induced after 20 days in cold followed by accumulation of *AtVIN3* mRNA and

stable repression of *FLC* transcripts (Fig. 4b). Similarly, in transgenic *FRI<sup>SF</sup> flc-3 PEP1b* plants *AaCOOLAIR I* and *AaCOOLAIR III* were also induced by cold and their patterns of expression resembled those of *A. thaliana COOLAIR I* and *II* (Fig. 4a,b). Therefore, *AaCOOLAIR* transcripts are probably controlled by *cis*-regulatory elements present in *PEP1* that are recognized by *trans*-acting factors conserved between *A. thaliana* and *A. alpina*.

In *A. thaliana*, *FLC* is stably silenced during cold by the deposition of chromatin-repressive marks (H3K27me3) and their spreading over the locus after return to normal growth temperature<sup>6,39–41</sup>. *VRN2*, a component of *PRC2*, is required for both establishing and maintaining this epigenetic silenced state<sup>10,41</sup>. To test whether chromatin modification by *PRC2* is responsible for the stable repression of the *PEP1b* transgene observed in *Arabidopsis FRI<sup>SF</sup> flc-3 PEP1b* we investigated the effect of a *vrn2* mutant allele on *PEP1b* expression. The *vrn2-1 fca-1* mutations were introgressed into *FRI<sup>SF</sup> flc-3 PEP1b* background (see Methods). The *fca-1* mutation impairs the autonomous flowering pathway and therefore increases *FLC* expression before vernalization but does not affect stable repression of *FLC* after vernalization<sup>10</sup>. *FLC* and *PEP1* mRNA levels were measured in control and introgressed plants before and after 40 days of cold treatment (Fig. 4c, Supplementary Fig. 9a). The *vrn2-1 fca-1* mutants failed to stably repress *FLC* mRNA expression upon vernalization, showing much higher *FLC* levels than in the *FRI<sup>SF</sup> FLC* control line 20 days after return to warm temperature (Fig. 4c, V40 + 20). Such deregulation could also be observed for the residual endogenous *FLC* expression in *FRI<sup>SF</sup> flc-3 PEP1b vrn2-1 fca-1* (Supplementary Fig. 9b, V40 + 20). *PEP1* mRNA levels in *FRI<sup>SF</sup> flc-3 PEP1b vrn2-1 fca-1* transgenic lines were higher before vernalization compared with *FRI<sup>SF</sup> flc-3 PEP1b 18-3* parental line (Fig. 4c, V0), similar to what was described for the endogenous *FLC* in *vrn2-1 fca-1* mutant<sup>10</sup>. Moreover, *PEP1* showed a tremendous increase of expression 20 days after return to warm temperature in this background, whereas its mRNA levels were almost undetectable in *FRI<sup>SF</sup> flc-3 PEP1b 18-3* parental line in which *VRN2* is active (Fig. 4c, V40 + 20). These data suggest that the stable repression of *PEP1b* observed in *A. thaliana FRI<sup>SF</sup> flc-3 PEP1b* transgenic lines is due to epigenetic silencing promoted by *PRC2* either directly on *PEP1b* or indirectly by affecting expression of a *trans*-acting regulator.

## Discussion

In this study, we demonstrate strong conservation of asRNAs expressed at *FLC* orthologues during vernalization in the related species *A. alpina* and *A. lyrata*. In perennial *A. alpina* we find that these asRNAs cycle in response to temperature changes through repeated vernalization treatments in a strictly inverse relationship to *PEP1* mRNA, which argues for their involvement in the repression of *FLC* genes by cold. Phylogenetic shadowing combined with interspecies gene transfer showed that sequences required for transcriptional activation of *FLC* orthologues in *A. thaliana* and *A. alpina* have probably diverged, while variation in the stability of repression of these genes by vernalization is probably caused by *trans*-acting differences. These results provide insights into evolution of the structure and regulation of *FLC*, a gene that controls intra- and inter-species variation in flowering behaviour in Brassicaceae species.

In *A. thaliana* and *A. alpina*, the orthologous genes *FLC* and *PEP1* show different responses to cold. *FLC* is stably repressed by vernalization, whereas cold repression of *PEP1* is unstable so that *PEP1* mRNA levels increase again after return to warm conditions<sup>21</sup>. This difference in the stability of repression was

not observed in transgenic *A. thaliana* carrying a genomic fragment of *PEP1b*, in which *PEP1b* mRNA stayed low after return to warm temperature. Introduction of a *vrn2* mutation released *PEP1b* repression after return to warm conditions, suggesting that *PEP1b* stable repression is not caused by an inability to reactivate transcription. Thus, *PEP1b* must contain all the sequences required for an active process of stable repression in *A. thaliana*. The VRE and the COLDAIR lncRNA transcribed from it were previously shown to be required for stable silencing of *FLC* in *A. thaliana*<sup>12–14</sup>. We have shown that the VRE-like sequences present in *PEP1b* lack homology to the COLDAIR promoter. This divergence however does not impair *PEP1b* stable silencing in *A. thaliana* by a mechanism involving the PRC2 component VRN2. However, we cannot exclude that the effect of PRC2 on *PEP1b* in *A. thaliana* is indirect as H3K27me3 levels at the gene were not measured. The unstable *PEP1* repression observed in *A. alpina* is most likely due to differences in the activity of *trans*-acting factors compared with *A. thaliana* and not to *cis*-acting differences such as those in the VRE, because *PEP1b* was stably repressed in *A. thaliana*, although the low level of expression of *PEP1b* in *A. thaliana* might also compromise our ability to detect reactivation. *Trans*-acting factors required for stable repression of *FLC* such as the components and accessory proteins of PRC2 (refs 7,8,10,41), LIKE HETEROCHROMATIN PROTEIN 1 (LHP1) or VERNALIZATION 1 (refs 13,42,43) are present in the *A. alpina* genome. Their absence, therefore, does not explain the instability of the H3K27me3 repressive marks at *PEP1* (ref. 21). An alternative possibility is that *A. alpina* encodes enzymes that actively remove H3K27me3 from *PEP1* allowing its reactivation after vernalization and that this activity is absent from annual *A. thaliana*. H3K27me3 demethylases are present in *A. thaliana*<sup>44</sup>, and members of this enzyme family might specifically target *PEP1* after vernalization in *A. alpina*.

*PEP1b* was only expressed at low levels in non-vernalized transgenic *A. thaliana*, suggesting that *cis*-regulatory elements required for *PEP1b* expression prior vernalization in *A. alpina* are not efficiently recognized in the heterologous species. Indeed, we found little 5' homology between *FLC* and *PEP1*, and what is present is restricted to a proximal block in *PEP1a* and *PEP1b* as well as a distal block only upstream of *PEP1a*. The latter is located 2 kb upstream of *FLC* translational start site in *A. thaliana* and outside the region shown to be sufficient for *FLC* regulation<sup>14</sup>. Other promoter regions moreover have been implicated in activation and repression of *FLC* expression<sup>14</sup> but did not exhibit high conservation in the *PEP1* promoter. RNA or RNA polymerase-associated complexes have been described to be positive regulators of *FLC* expression<sup>45–47</sup>. These appear to act close to the transcriptional start site, which may explain the homology detected around this region. The proposed binding site of one of them, *SUF4* (ref. 47), is however not conserved in *PEP1*. Also, one of two populations of *A. lyrata* studied by Kemi *et al.*<sup>26</sup> was monomorphic for a deletion in *FLC1* promoter containing this binding site of *SUF4*. These findings further suggest that different mechanisms might promote *PEP1* expression in *A. alpina* as well as *FLC1* expression in *A. lyrata*.

Our analysis demonstrated that the first introns of *FLC* orthologues, especially the flanks and the VRE-like sequences that are involved respectively in activating expression of *FLC* and stably repressing the gene in response to vernalization<sup>12–14</sup>, were generally more conserved than the promoter regions. In *PEP1* these sequences might also contribute to its downregulation by cold although the VRE-like sequences present in the first intron do not confer stable repression in *A. alpina*.

Both sense and antisense non-coding RNAs have been reported at *FLC*<sup>12,18</sup>. Similar to the *FLC* non-coding sense RNA COLDAIR, the HOTAIR non-coding sense RNA of humans

was proposed to recruit PRC2 to the HOX gene cluster<sup>48,49</sup>. However, sequence comparisons and deletion of the mouse *HOTAIR* gene indicate that this regulatory function has diverged between humans and mouse<sup>36</sup>. Our phylogenetic shadowing approach showed that the COLDAIR promoter described in *A. thaliana* is not strongly conserved even in annual species in which *FLC* orthologues are stably repressed by cold. Additionally, we could not detect the sense COLDAIR RNA either in *A. alpina* or *A. thaliana*. These data raise the question whether this sense lncRNA is conserved in the Brassicaceae, but the absence of a reliable positive control prevents us from drawing a definitive conclusion.

By contrast cold-inducible asRNAs were readily detected at *FLC* genes of *A. lyrata* and at *PEP1* of *A. alpina*, respectively the closest and the most distantly related species to *A. thaliana* that we examined. The COOLAIR proximal promoter and the COOLAIR first exon at the 3' end of all *FLC* orthologues were more highly conserved than most of the promoter region or first intron regulatory sequences of *FLC*. Such a high conservation was not observed at the 3' ends of other MADS box genes, with the exception of *SHP2* for which a potential natural antisense lncRNA is also annotated after the 3' UTR. These analyses suggest that COOLAIR lncRNAs are under high constraint and likely have a role in cold repression of *FLC*. However, *FLC* derivatives lacking the 3' end region or in which insertions prevent expression of COOLAIR still silence in the cold<sup>14,19</sup>, suggesting that COOLAIR is not essential for *FLC* silencing. Functional redundancy between COOLAIR and the VRE/COLDAIR might prevent detection of an effect of COOLAIR. Deletion of the VRE/COLDAIR prevents silencing but does not affect cold-mediated repression of *FLC* mRNA level<sup>13</sup>, so it would be interesting to test whether loss of both VRE/COLDAIR and COOLAIR prevents *FLC* downregulation in the cold. Nevertheless, current studies indicate that COOLAIR is not absolutely required for *FLC* cold-mediated repression or silencing, but might rather quantitatively enhance one or both of these processes. COOLAIR might also contribute more to *FLC* regulation in natural conditions where temperature and other environmental factors fluctuate widely. Mutations affecting flowering time were indeed previously shown to have different effects in natural conditions than in growth chamber experiments<sup>50</sup>.

Studies of the *A. thaliana* *fpa* mutant, which is affected in polyadenylation signal recognition, suggest that the distal form of asRNA (COOLAIR II) might not play a role in *FLC* repression<sup>16,17</sup>. Our observation that the proximal COOLAIR I is the most conserved asRNA between *A. thaliana*, *A. lyrata* and *A. alpina* would support this hypothesis. The presence of distal asRNAs (AtCOOLAIR II, AaCOOLAIR II and III) may only be a consequence of inefficient polyadenylation at the termination site for Class I COOLAIR. Taken together our data suggest that Class I COOLAIR asRNAs are those with the major biological function and that their increased abundance during vernalization in *A. thaliana*, *A. lyrata* and *A. alpina* is a widely conserved feature associated with repression of *FLC* genes in cold.

The polycarpic, perennial life cycle of *A. alpina* causes the plant to be exposed to vernalization many times during its life time, whereas annual, monocarpic *A. thaliana* is exposed to vernalization only once. We observed that *PEP1* mRNA cycled with temperature, so that it was reactivated in the warm after vernalization<sup>21</sup>, and repressed again by a second vernalization treatment. AaCOOLAIR and AaVIN3 cycled in an inverse pattern to that of *PEP1*. Interestingly, they appeared to be primed by the first vernalization treatment, resulting in a more rapid and enhanced rise in their expression during the second vernalization treatment. These differences suggest that perennial plants can maintain a memory of their first winter. Molecular mechanisms

by which this occurs are unknown but might involve epigenetic changes or changes in chromosomal configuration. Such mechanisms are unlikely to involve increased H3K27me3 levels at *PEP1* because this chromatin mark was shown to fall to pre-vernalization levels 3 and 5 weeks after cold treatment<sup>21</sup>. A gene loop occurring between *FLC* 5' and 3' regions is disrupted early during vernalization in *A. thaliana*. This chromosomal configuration change has been proposed to reveal COOLAIR promoter and favour its transcription<sup>51</sup>. Interestingly the pre-vernalized *FLC* 5'-3' gene loop does not reform after return to warm temperature. Such a stable change in conformation might occur at *PEP1* as well, and might provide a transcriptional memory responsible for COOLAIR priming. This could contribute to the increased sensitivity of older plants, which have already experienced a winter, to flower in response to inductive environmental conditions, a process often called competence to flower, which is particularly significant in perennials<sup>52</sup>.

## Methods

**Analysis of sequences of FLC orthologues.** *FLC* sequences from *A. lyrata*, *C. rubella* and *T. halophila* (see Supplementary Data 1 for sequences) were obtained using genome browsers on phytozome ([www.phytozome.net](http://www.phytozome.net)) and checking the synteny with *A. thaliana*. *PEP1* genomic sequence was obtained from the BAC (accession number FJ543377.1).

Pairwise alignments were performed using either Shuffle LAGAN<sup>53</sup> and visualized with VISTA browser using default settings<sup>54</sup> or with GATAliner (using default settings) and visualized with GATApLOTter<sup>55</sup>.

**Plant material.** *A. thaliana* *FRI*<sup>SF</sup> *FLC* was obtained by introgression of the *FRI* allele of San-Feliu-2 into Columbia and *FRI*<sup>SF</sup> *flc-3* was then recovered after EMS mutagenesis<sup>3</sup>. Transgenic lines *FRI*<sup>SF</sup> *flc-3* *PEP1b* were obtained by floral dipping<sup>56</sup> of *FRI*<sup>SF</sup> *flc-3* with the Agrobacterium carrying pGAP-*PEP1b*-Km plasmids (see Cloning) and confirmed by PCRs (primers set in Supplementary Table 3). *FRI*<sup>SF</sup> *flc-3* *PEP1b* *vrn2-1* *fca-1* plants were obtained by crossing *FRI*<sup>SF</sup> *flc-3* *PEP1b* 18-3 homozygote plants with *vrn2-1* *fca-1* double mutants<sup>57</sup>.

*A. alpina* plants used in this study are from the Pajares and Dorfertal accessions<sup>21,37</sup>.

**Growth conditions.** Flowering time was measured on 9–23 plants per genotype (Supplementary Table 2) grown in climate-controlled glasshouses (20 °C under long days, 16 h light per 8 h dark). A Student's *t*-test was applied to determine whether the flowering behaviour of genotypes was statistically different from the control *FRI*<sup>SF</sup> *flc3* with a *P* value < 0.005. Vernalization experiments were carried out in *A. thaliana* plants grown 10 days in climate-controlled glasshouses (stratified 2 days at 4 °C), vernalized for 40 days at 4 °C under short days (8 h light per 16 h dark) and transferred back to climate-controlled glasshouses for 10 or 20 additional days. Full seedlings or rosette leaves were harvested before or after floral transition respectively. Fifty-six day old *A. alpina* plants grown in long days climate-controlled glasshouses (stratified 5 days s at 4 °C) were vernalized for up to 84 days at 4 °C under short days and transferred back to climate-controlled glasshouses for up to 35 additional days in long days. To mimic two successive winter periods, some of the *A. alpina* plants vernalized as described before were transferred for another 84 days at 4 °C under short days followed by 35 days in long days climate-controlled glasshouses. For each time point, one leaf of the same order was harvested from the main shoot on three different individuals.

**Cloning.** *PEP1b* cloning in the pGAP-Km vector was performed using the recombineering method<sup>58</sup>. The homology arms, EcoRI-Flank 1-SalI and SalI-Flank 2-BamHI were amplified by PCR (see Supplementary Table 3 for primers) on the *PEP1*-BAC (FJ543377.1). After recombination in SW102 cells carrying *PEP1*-BAC, the pGAP-*PEP1b*-Km was further extracted and transformed into Agrobacterium GV3101 (pPM90RK) strain. The introduced fragment was 13.4 kb comprising the 4.4 kb *PEP1b* 5'-intergenic region spanning the end of *PEP1a* upstream duplication to *PEP1b*, exon 1b to 7 and a 1.8 kb downstream segment harbouring the region of homology at the 3' end of *PEP1* and *FLC*.

**RNA extraction.** Total RNA was isolated using Trizol reagent (Invitrogen) and subsequently digested with DNase I Amplification grade (Invitrogen) according to the manufacturer's protocols.

**3' RACE PCR.** 3' RACE experiments were performed on 3 µg of total RNA with the 3' RACE System for Rapid amplification of cDNA ends (Invitrogen) according

to the manufacturer's protocol. PCR followed by a nested PCR were performed using AaCOOLAIR-specific forward primers (see Supplementary Table 3) together with the provided Universal Amplification Primer and the Abridge Universal Amplification Primer respectively. PCR products were cloned and sequenced.

**RT-qPCR and '3' tiling' RT-qPCR.** Reverse transcription was performed with oligo (dT) primers on 1 µg of total RNA using SuperScript II Reverse Transcriptase (Invitrogen) according to the manufacturer's protocols. The qPCRs were performed on the Roche Light Cycler 480II instrument using the primer sets listed in Supplementary Table 3 and the IQ SYBR Green Supermix (Bio-Rad). Transcripts levels were expressed as a percentage of the accepted references genes *RAN3* and *ACTIN* for *A. alpina* and *A. thaliana* samples respectively<sup>12,21</sup>. '3' tiling' RT-qPCR was used to approximately determine the 3' end of AaCOOLAIR II transcripts. RTqPCRs utilizing the same forward primer but different reverse primers spanning the expected 3' end of AaCOOLAIR II (see primer sets in Supplementary Table 3) were performed. Primers located progressively further towards the 3' end were used until no amplification was detectable. PCR products were cloned and sequenced.

## References

- Amasino, R. M. & Michaels, S. D. The timing of flowering. *Plant Physiol.* **154**, 516–520 (2010).
- Andres, F. & Coupland, G. The genetic basis of flowering responses to seasonal cues. *Nat. Rev. Genet.* **13**, 627–639 (2012).
- Michaels, S. D. & Amasino, R. M. *FLOWERING LOCUS C* encodes a novel MADS domain protein that acts as a repressor of flowering. *Plant Cell* **11**, 949–956 (1999).
- Sheldon, C. C. *et al.* The FLF MADS box gene: a repressor of flowering in *Arabidopsis* regulated by vernalization and methylation. *Plant Cell* **11**, 445–458 (1999).
- Angel, A., Song, J., Dean, C. & Howard, M. A Polycomb-based switch underlying quantitative epigenetic memory. *Nature* **476**, 105 (2011).
- Finnegan, E. J. & Dennis, E. S. Vernalization-induced trimethylation of histone H3 lysine 27 at FLC is not maintained in mitotically quiescent cells. *Curr. Biol.* **17**, 1978–1983 (2007).
- Sung, S. B. & Amasino, R. M. Vernalization in *Arabidopsis thaliana* is mediated by the PHD finger protein VIN3. *Nature* **427**, 159–164 (2004).
- Wood, C. C. *et al.* The *Arabidopsis thaliana* vernalization response requires a polycomb-like protein complex that also includes VERNALIZATION INSENSITIVE 3. *Proc. Natl Acad. Sci. USA* **103**, 14631–14636 (2006).
- De Lucia, F., Crevillen, P., Jones, A. M. E., Greb, T. & Dean, C. A PHD-Polycomb Repressive Complex 2 triggers the epigenetic silencing of FLC during vernalization. *Proc. Natl Acad. Sci. USA* **105**, 16831–16836 (2008).
- Gendall, A. R., Levy, Y. Y., Wilson, A. & Dean, C. The VERNALIZATION 2 gene mediates the epigenetic regulation of vernalization in *Arabidopsis*. *Cell* **107**, 525–535 (2001).
- Ietswaart, R., Wu, Z. & Dean, C. Flowering time control: another window to the connection between antisense RNA and chromatin. *Trends Genet.* **28**, 445–453 (2012).
- Heo, J. B. & Sung, S. Vernalization-mediated epigenetic silencing by a long intronic noncoding RNA. *Science* **331**, 76–79 (2011).
- Sung, S. B. *et al.* Epigenetic maintenance of the vernalized state in *Arabidopsis thaliana* requires LIKE HETEROCHROMATIN PROTEIN 1. *Nat. Genet.* **38**, 706–710 (2006).
- Sheldon, C. C., Conn, A. B., Dennis, E. S. & Peacock, W. J. Different regulatory regions are required for the vernalization-induced repression of *FLOWERING LOCUS C* and for the epigenetic maintenance of repression. *Plant Cell* **14**, 2527–2537 (2002).
- Swiezewski, S., Liu, F. Q., Magusin, A. & Dean, C. Cold-induced silencing by long antisense transcripts of an *Arabidopsis* Polycomb target. *Nature* **462**, 799–U122 (2009).
- Hornyik, C., Terzi, L. C. & Simpson, G. G. The Spen family protein FPA controls alternative cleavage and polyadenylation of RNA. *Dev. Cell* **18**, 203–213 (2010).
- Liu, F. Q., Marquardt, S., Lister, C., Swiezewski, S. & Dean, C. Targeted 3' processing of antisense transcripts triggers *Arabidopsis* FLC chromatin silencing. *Science* **327**, 94–97 (2010).
- Liu, F. *et al.* The *Arabidopsis* RNA-binding protein FCA requires a lysine-specific demethylase 1 homolog to downregulate FLC. *Mol. Cell* **28**, 398–407 (2007).
- Helliwell, C. A., Robertson, M., Finnegan, E. J., Buzas, D. M. & Dennis, E. S. Vernalization-repression of *Arabidopsis* FLC requires promoter sequences but not antisense transcripts. *PLoS ONE* **6**, e21513 (2011).
- Sun, Q., Csorba, T., Skourti-Stathaki, K., Proudfoot, N. J. & Dean, C. R-loop stabilization represses antisense transcription at the *Arabidopsis* FLC locus. *Science* **340**, 619–621 (2013).
- Wang, R. H. *et al.* PEP1 regulates perennial flowering in *Arabidopsis alpina*. *Nature* **459**, 423–427 (2009).



22. Lin, S. I. *et al.* Differential regulation of expression by vernalization *FLOWERING LOCUS C* in cabbage and *Arabidopsis*. *Plant Physiol.* **137**, 1037–1048 (2005).
23. Tadege, M. *et al.* Control of flowering time by FLC orthologues in *Brassica napus*. *Plant J.* **28**, 545–553 (2001).
24. Aikawa, S., Kobayashi, M. J., Satake, A., Shimizu, K. K. & Kudoh, H. Robust control of the seasonal expression of the *Arabidopsis* FLC gene in a fluctuating environment. *Proc. Natl Acad. Sci. USA* **107**, 11632–11637 (2010).
25. D’Aloia, M., Tocquin, P. & Perilleux, C. Vernalization-induced repression of *FLOWERING LOCUS C* stimulates flowering in *Sinapis alba* and enhances plant responsiveness to photoperiod. *New Phytol.* **178**, 755–765 (2008).
26. Kemi, U. *et al.* Role of vernalization and of duplicated *FLOWERING LOCUS C* in the perennial *Arabidopsis lyrata*. *New Phytol.* **197**, 323–335 (2013).
27. Guo, Y. L., Todesco, M., Hagemann, J., Das, S. & Weigel, D. Independent FLC mutations as causes of flowering time variation in *Arabidopsis thaliana* and *Capsella rubella*. *Genetics* **192**, 729–739 (2012).
28. Zhou, C. M. *et al.* Molecular basis of age-dependent vernalization in *Cardamine flexuosa*. *Science* **340**, 1097–1100 (2013).
29. Boffelli, D. *et al.* Phylogenetic shadowing of primate sequences to find functional regions of the human genome. *Science* **299**, 1391–1394 (2003).
30. Cliften, P. F. *et al.* Surveying *Saccharomyces* genomes to identify functional elements by comparative DNA sequence analysis. *Genome Res.* **11**, 1175–1186 (2001).
31. Stark, A. *et al.* Discovery of functional elements in 12 *Drosophila* genomes using evolutionary signatures. *Nature* **450**, 219–232 (2007).
32. Adrian, J. *et al.* cis-Regulatory elements and chromatin state coordinately control temporal and spatial expression of *FLOWERING LOCUS T* in *Arabidopsis*. *Plant Cell* **22**, 1425–1440 (2010).
33. Hong, R. L., Hamaguchi, L., Busch, M. A. & Weigel, D. Regulatory elements of the floral homeotic gene *AGAMOUS* identified by phylogenetic footprinting and shadowing. *Plant Cell* **15**, 1296–1309 (2003).
34. Koch, M. A., Weisshaar, B., Kroymann, J., Haubold, B. & Mitchell-Olds, T. Comparative genomics and regulatory evolution: conservation and function of the *Chs* and *Apetala3* promoters. *Mol. Biol. Evol.* **18**, 1882–1891 (2001).
35. Kutter, C. *et al.* Rapid turnover of long noncoding RNAs and the evolution of gene expression. *PLoS Genet.* **8**, e1002841 (2012).
36. Schorderet, P. & Duboule, D. Structural and functional differences in the long non-coding RNA *hotair* in mouse and human. *PLoS Genet.* **7**, e1002071 (2011).
37. Albani, M. *et al.* PEP1 of *Arabis alpina* is encoded by two overlapping genes that contribute to natural genetic variation in perennial flowering. *PLoS Genet.* **8**, e1003130 (2012).
38. Nah, G. & Chen, Z. J. Tandem duplication of the FLC locus and the origin of a new gene in *Arabidopsis* related species and their functional implications in allopolyploids. *New Phytol.* **186**, 228–238 (2010).
39. Greb, T. *et al.* The PHD finger protein VRN5 functions in the epigenetic silencing of *Arabidopsis* FLC. *Curr. Biol.* **17**, 73–78 (2007).
40. Sung, S. B., Schmitz, R. J. & Amasino, R. M. A PHD finger protein involved in both the vernalization and photoperiod pathways in *Arabidopsis*. *Gene Dev.* **20**, 3244–3248 (2006).
41. Schubert, D. *et al.* Silencing by plant Polycomb-group genes requires dispersed trimethylation of histone H3 at lysine 27. *EMBO J.* **25**, 4638–4649 (2006).
42. Levy, Y. Y., Mesnage, S., Mylne, J. S., Gendall, A. R. & Dean, C. Multiple roles of *Arabidopsis* VRN1 in vernalization and flowering time control. *Science* **297**, 243–246 (2002).
43. Mylne, J. S. *et al.* LHP1, the *Arabidopsis* homologue of HETEROCHROMATIN PROTEIN1, is required for epigenetic silencing of FLC. *Proc. Natl Acad. Sci. USA* **103**, 5012–5017 (2006).
44. Lu, F. L., Cui, X., Zhang, S. B., Jenuwein, T. & Cao, X. F. *Arabidopsis* REF6 is a histone H3 lysine 27 demethylase. *Nat. Genet.* **43**, 715–U144 (2011).
45. Oh, S., Park, S. & van Nocker, S. Genic and global functions for Paf1C in chromatin modification and gene expression in *Arabidopsis*. *PLoS Genet.* **4**, e1000077 (2008).
46. Geraldo, N., Baurle, I., Kidou, S., Hu, X. & Dean, C. FRIGIDA delays flowering in *Arabidopsis* via a cotranscriptional mechanism involving direct interaction with the nuclear cap-binding complex. *Plant Physiol.* **150**, 1611–1618 (2009).
47. Choi, K. *et al.* The FRIGIDA complex activates transcription of FLC, a strong flowering repressor in *Arabidopsis*, by recruiting chromatin modification factors. *Plant Cell* **23**, 289–303 (2011).
48. Rinn, J. L. *et al.* Functional demarcation of active and silent chromatin domains in human HOX loci by noncoding RNAs. *Cell* **129**, 1311–1323 (2007).
49. Tsai, M. C. *et al.* Long noncoding RNA as modular scaffold of histone modification complexes. *Science* **329**, 689–693 (2010).
50. Wilczek, A. M. *et al.* Effects of genetic perturbation on seasonal life history plasticity. *Science* **323**, 930–934 (2009).
51. Crevillen, P., Sonmez, C., Wu, Z. & Dean, C. A gene loop containing the floral repressor FLC is disrupted in the early phase of vernalization. *EMBO J.* **32**, 140–148 (2013).
52. Hackett, W. P. Juvenility, maturation, and rejuvenation in woody plants. *Hortic. Rev.* **7**, 109–155 (1985).
53. Brudno, M. *et al.* LAGAN and Multi-LAGAN: efficient tools for large-scale multiple alignment of genomic DNA. *Genome Res.* **13**, 721–731 (2003).
54. Mayor, C. *et al.* VISTA: visualizing global DNA sequence alignments of arbitrary length. *Bioinformatics* **16**, 1046–1047 (2000).
55. Nix, D. A. & Eisen, M. B. GATA: a graphic alignment tool for comparative sequence analysis. *BMC Bioinformatics* **6**, 9 (2005).
56. Clough, S. J. & Bent, A. F. Floral dip: a simplified method for *Agrobacterium*-mediated transformation of *Arabidopsis thaliana*. *Plant J.* **16**, 735–743 (1998).
57. Chandler, J., Wilson, A. & Dean, C. *Arabidopsis* mutants showing an altered response to vernalization. *Plant J.* **10**, 637–644 (1996).
58. Bitrian, M., Roodbarkelari, F., Horvath, M. & Koncz, C. BAC-recombineering for studying plant gene regulation: developmental control and cellular localization of SnRK1 kinase subunits. *Plant J.* **65**, 829–842 (2011).

## Acknowledgements

This work was funded by grants to G.C. from the DFG through SFB680 and the Cluster of Excellence in Plant Sciences (CEPLAS). The group of G.C. receives a core grant from the Max Planck Society.

## Author contributions

L.C., O.S. and G.C. planned the experiments; L.C., S.B., M.C.A. and U.K. carried out the experiments; and L.C. and G.C. wrote the manuscript.

## Additional information

**Supplementary Information** accompanies this paper at <http://www.nature.com/naturecommunications>

**Competing financial interests:** The authors declare no competing financial interests.

**Reprints and permission** information is available online at <http://npg.nature.com/reprintsandpermissions/>

**How to cite this article:** Castaings, L. *et al.* Evolutionary conservation of cold-induced antisense RNAs of *FLOWERING LOCUS C* in *Arabidopsis thaliana* perennial relatives. *Nat. Commun.* 5:4457 doi: 10.1038/ncomms5457 (2014).



This work is licensed under a Creative Commons Attribution-NonCommercial-NoDerivs 4.0 International License. The images or other third party material in this article are included in the article's Creative Commons license, unless indicated otherwise in the credit line; if the material is not included under the Creative Commons license, users will need to obtain permission from the license holder to reproduce the material. To view a copy of this license, visit <http://creativecommons.org/licenses/by-nc-nd/4.0/>