

The role of macrophages polarization in predicting prognosis of radically resected gastric cancer patients

Francesco Pantano ^a, Pierpaolo Berti ^b, Francesco Maria Guida ^a, Giuseppe Perrone ^c,
Bruno Vincenzi ^a, Michelina Maria Carla Amato ^c, Daniela Righi ^c, Emanuela Dell'Aquila ^a,
Francesco Graziano ^d, Vincenzo Catalano ^d, Marco Caricato ^e, Sergio Rizzo ^f, Andrea Onetti Muda ^c,
Antonio Russo ^{f, *}, Giuseppe Tonini ^a, Daniele Santini ^a

^a Department of Medical Oncology, Campus Bio-Medico University of Rome, Rome, Italy

^b Department of Hematology, Campus Bio-Medico University of Rome, Rome, Italy

^c Department of Anatomical Pathology, Campus Bio-Medico University of Rome, Rome, Italy

^d Department of Onco-Hematology, Azienda Ospedaliera San Salvatore, Pesaro, Italy

^e Department of Surgery, Campus Bio-Medico University of Rome, Rome, Italy

^f Department of Surgical, Oncological and Stomatological Sciences, University of Palermo, Palermo, Italy

Received: February 13, 2013; Accepted: June 25, 2013

Abstract

Tumour-associated Macrophages (TAM) present two different polarizations: classical (M1) characterized by immunostimulation activity and tumour suppression; alternative (M2) characterized by tumour promotion and immune suppression. In this retrospective study, we evaluated the correlation between the two forms of TAM with survival time in radically resected gastric cancer patients. A total of 52 chemo- and radio-naïve patients were included. Two slides were prepared for each patient and double-stained for CD68/NOS2 (M1) or CD68/CD163 (M2) and five representative high-power fields per slide were evaluated for TAM count. The median value of the two macrophage populations density and the median value of M1/M2 ratio were used as cut-off. Twenty-seven patients with M1 density above-the-median had a significantly higher survival compared to those below the median. Twenty-six patients with M1/M2 ratio above the median showed median OS of 27.2 months compared to 15.5 months of the patients below the median. No association between M2 macrophage density and patient's outcome was found. In multivariate analysis, M1/M2 was a positive independent predictor of survival. The M1 macrophage density and M1/M2 ratio, as confirmed in multivariate analysis, are factors that can help in predicting patients survival time after radical surgery for gastric cancer.

Keywords: tumour associated macrophages • M1 polarization • M2 polarization • prognostic factor • gastric cancer

Introduction

Tumour-associated macrophages (TAMs) represent a substantial fraction of the growing tumour mass and are associated with poor prognosis in several human cancers [1]. TAMs exist in two different polarizations classified as M1 and M2. M1 macrophages show a protective role in tumorigenesis activating tumour-killing mechanisms and antagonizing the activities of different M2 macrophages that are

clearly involved in suppression of adaptive tumour-specific immune responses and in promotion of tumour growth, invasion, metastasis, stroma remodelling and angiogenesis [2–6]. Unfortunately, the majority of TAM exhibit characteristics of M2 polarization [7, 8]. M1 macrophages differentiation is induced by interferon- γ , lipopolysaccharides, tumour necrosis factor (TNF α) and granulocyte–monocyte colony-stimulating factor and are phenotypically characterized by high levels of interleukin IL-12, IL-23, TNF α , IL-1, IL-6, granulocyte–macrophage colony-stimulating factor (GM-CSF), CXC ligand 10 (CXCL10), inducible nitric oxide synthase (iNOS), human leucocyte antigen (HLA)-DR, reactive oxygen and nitrogen intermediates. M2 macrophages differentiation is induced by IL-4, IL-10, IL-13, IL-21, activin A, immune complexes, and glucocorticoid and express high levels of IL-10, IL-1 receptor antagonist, CC ligand 22 (CCL22), scavenger, mannose and galactose receptors, arginase I and CD163 antigen [7, 9–14].

*Correspondence to: Antonio RUSSO, M.D., Ph.D.,
Section of Medical Oncology,
Department of Surgical and Oncological Sciences,
University of Palermo, Via del Vespro,
129, Palermo 90127, Italy.
Tel.: +39-091-6552500
Fax: +39-091-6554529
E-mail: antonio.russo@usa.net

Specifically, it has been reported that TAM infiltration into tumour tissue correlates significantly with tumour vascularity in human oesophageal and gastric cancers [15] and it is also has been found a direct association between the degree of TAM infiltration and depth of tumour invasion, nodal status and clinical stage in gastric cancer [16]. Nevertheless, no study evaluated the correlation between M1/M2 tumour infiltration and the overall survival (OS) in gastric cancer patients. Against these backgrounds, we have decided to evaluate the prognostic role of TAM infiltration in patients affected by radically resected gastric cancer.

Materials and methods

Study population

This study was approved by the Institutional Review Board of Campus Bio-Medico University, Rome, Italy. The procedures to obtain human gastric cancer tissues and follow-up information are in accordance with the Ethical Principles for Medical Research Involving Human Subjects as formulated in the World Medical Association Declaration of Helsinki (revised in 2008). All specimens were retrospectively obtained from the archives of formalin-fixed, paraffin-embedded tissue blocks in the Departments of pathology of Campus Bio-Medico University, Rome, and of Medical University of Pesaro-Urbino, Italy. The gastric cancer tissues were collected from surgeries performed from May 2000 to August 2004. The patients were followed up until December 2011 through outpatient visits and/or correspondences to family members. The inclusion criteria were complete follow-up data, paraffin blocks available, R0 radical surgery, pre-operative chemotherapy or radiotherapy excluded. All of the cases that satisfied the inclusion criteria were included in this study. The patients were selected without knowledge of their previous tumour macrophage counts. Histological evaluation was based on the World Health Organization criteria [17]. Pathological findings (tumour size, spread and lymph-node status) were obtained from the pathologist's original reports. Tumour–node–metastasis status (TNM) classification was reassessed using seventh edition of the UICC/AJCC classification [18].

Statistical analysis

The OS time was calculated as the period from the date of surgery until death. OS was determined by Kaplan–Meier product-limit method. Moreover, the differences in terms of OS according to the prognostic variables were evaluated by the log-rank test. Finally, the Cox proportional hazards model was applied to the multivariate survival analysis [19]. SPSS software (version 19.00, SPSS, Chicago, IL, USA) was used for statistical analysis. A *P* value of less than 0.05 was considered to indicate statistical significance.

Immunofluorescence

The gastric cancer tissue specimens of 52 patients who had undergone resection for curative intent were analysed. All sections contained tumour and peritumoural tissue. Consecutive 3 μ m sections were cut from each block for immunofluorescence experiments. To evaluate M1 and M2

macrophages population, mouse anti-human macrophage CD68 mAb (dilution 1:50; clone PG-M1, DAKO, Hamburg, Germany), CD163 rabbit monoclonal mAb (dilution 1:200; clone 10D6, Novocastra, Newcastle upon Tyne, UK) and NOS2 rabbit polyclonal antibody (N-20) (dilution 1:400; Santa Cruz Biotechnology Inc., Santa Cruz, CA, USA) were adopted. Incubation with primary antibodies against CD68 was followed by Alexa Fluor 488 (dilution 1:200; goat antimouse; Invitrogen, USA); NOS2 and CD163 was followed by and Alexa Fluor 568 (dilution 1:200; donkey anti-rabbit Invitrogen, Darmstadt, Germany). A mounting medium containing DAPI (Vectashield, Vector Laboratories, Burlingame, CA, USA) was used. Negative control slides processed without primary antibodies were included for each staining. Thus, two slides were prepared for each patient and double-staining of CD68/NOS2 (markers for M1 macrophages) and CD68/CD163 (markers for M2 macrophages) was performed.

Analysis and validation of immunostaining

Five representative high-power fields ($\times 400$ magnification) of the deepest infiltrative tumour areas per tissue section were selected using an Eclipse 80i Nikon microscope (Nikon, Tokyo, Japan). Acquisition was carried out using the Imaging Software NIS-Elements (Nikon). Cell counts were performed on collected composite images, in which the signal from the fluorochrome had been assigned a different pseudo-colour (green for 488, red for 568 and blue for DAPI). Adobe Photoshop CS 5 (version 5.5) software was used to generate composite images from three different fluorochrome signals. The number of nucleated cells with positive staining for the phenotype marker in each image was then counted manually. Evaluation was performed simultaneously by two investigators (MA, PB) who were blinded as regards which group the specimens belonged to and to patient outcome. The investigators analysed M1 macrophages, M2 macrophages and the M1/M2 ratio counting the absolute macrophage number for all high-power field per section (Fig. 1).

Results

Patient characteristics

Fifty-two patients were included in this retrospective study. All of the patients had complete follow-up information and the pathological diagnosis was confirmed by a pathologist prior to inclusion in this study. No patients received chemotherapy and/or radiotherapy before or after surgery. The overall cumulative survival rates were 77% (40 patients) for 1 year, 42% (22) for 2 years, 15% (8) for 3 years, 13% (7) for 4 years and 11% (6) for 5 years. The clinicopathological characteristics were summarized in Table 1.

Macrophage distribution

In the five representative high-power fields ($\times 400$ magnification) per tissue section of the 52 patients, the median cell count value of CD68/NOS2 macrophages (markers for M1 polarization) was 7.0 (mean 7.4 ± 3.4 ; CI: 6.5–8.3) whereas the median cell count value of CD68/CD163 (markers for M2 polarization) was 6.4 (mean 7 ± 3.9 ; CI: 5.9–8.1). In addition, M1/M2 ratio was calculated. The median value

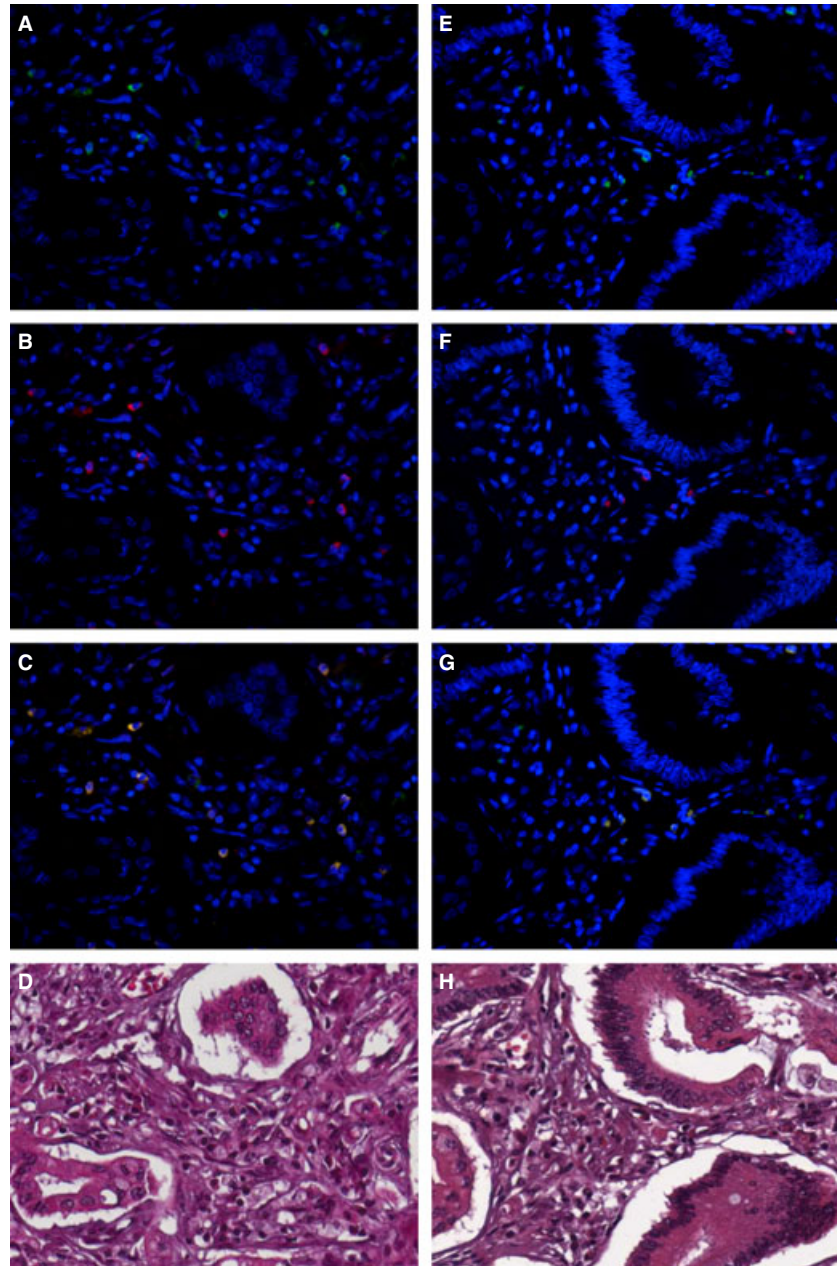


Fig. 1 Immunohistochemistry of macrophage in gastric cancer. Gastric cancer stained for M1 (A–C) and M2 (E–G) immunofluorescence pattern. (A, E) Nucleated cells positive staining for CD68 (green), which resulted in cytoplasm staining of macrophages. (B) INOS staining (red) in some nucleated cells. (C) Merged image of DAPI (blue), CD68 (green) and INOS (red) defining M1 macrophages (green/red double staining). (F) CD163 staining (red) in nucleated cells. (G) Merged image of DAPI (blue), CD68 (green) and CD163 (red) defining M2 macrophages (green/red double staining). (D, H) E&E images of immunofluorescence fields. Original magnification 400 \times .

of M1/M2 ratio between the median cell count value of the two macrophage populations was 1.16 (mean 1.26 ± 0.70 ; CI: 1.07–1.45).

M1/M2 ratio with clinicopathological characteristics as tumour stage, histology, lymphonode invasion and grade ($P > 0.05$).

Correlation between the M1/M2 macrophage density and the M1/M2 ratio with clinicopathological characteristics

We found that there was no statistically significant association between the M1 macrophage density, M2 macrophage density and

Correlation between the M1/M2 macrophage density and the M1/M2 ratio with survival time

To assess whether there is any value of the macrophage density of M1 and M2 in predicting prognosis, the median value of the macrophage density of two populations was used as a cut-off point to

Table 1 Clinicopathological characteristics (n = 52)	
Median survival (months; Mean ± SD)	21.5 (27.45 ± 25.56)
Age (years; Mean ± SD)	61.7 ± 1.2
Gender (male:female)	23:29
Tumour stage, number (%)	
Ia	1 (2)
Ib	3 (5)
IIa	18 (34)
IIb	9 (17)
IIIa	9 (17)
IIIb	12 (23)
Histology, number (%)	
Intestinal	29 (55)
Diffuse	10 (19)
Mix	9 (17)
Poorly differentiated	4 (7)
Tumour grade, number (%)	
G1	5 (9)
G2	17 (33)
G3	28 (54)
Not recorded	2 (4)

dichotomize the 52 patients into a group with a macrophage density above or below the median value according to previous studies [20, 21]. Kaplan–Meier survival curves were plotted to investigate further the association of cell densities with survival. The log-rank test was used to compare survival rates. We found that the 27 patients with above-the-median M1 macrophage density had a 1-year survival rate of 81% (22 patients), 2-year survival rate of 55% (15), 3-year survival rate of 26% (7), 4-year survival rate of 22% (6) and 5-year survival rate of 18% (5) with median survival of 25.6 months, which were significantly higher than the corresponding survival rates 72% (18), 24% (6), 4% (1), 4% (1) and 4% (1) with Median Survival of 17.1 months, respectively, in the 25 patients with below-the-median M1 macrophage density, with $P = 0.041$ ($P < 0.05$) (Fig. 2, Table 2). In contrast, the 27 patients with above-the-median M2 macrophage density had a 1-year survival rate of 70% (19), 2-year survival rate of 37% (10), 3-year survival rate of 15% (4), 4-year survival rate of 11% (3) and 5-year survival rate of 11% (3) with median survival of 17.6 months, which were lower but not significantly than the corresponding survival rates 84% (21), 48% (12), 16% (4), 16% (4) and 12% (3) with median survival of 22.3 months, respectively, in the 25 patients with below-the-median M2 macrophage density, with

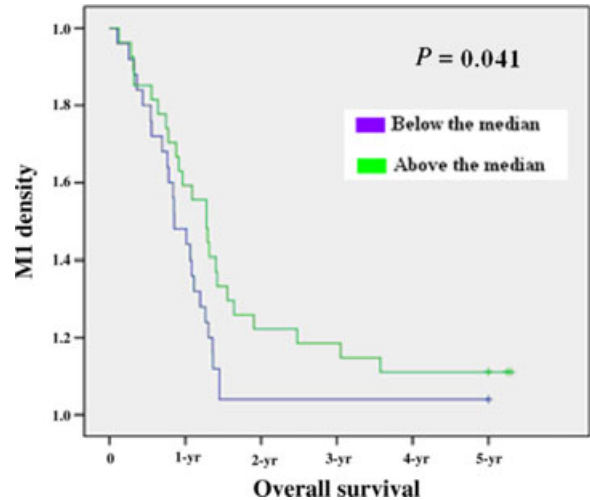


Fig. 2 Kaplan–Meier 5-year survival curves according to M1 polarization.

$P = 0.724$ ($P > 0.05$) (Fig. 3). The median value of the M1/M2 ratio was used as a cut-off point to dichotomize the 52 patients into a group with a M1/M2 ratio above or below the median. The 26 patients with above-the-median M1/M2 ratio had a 1-year survival rate of 88% (23), 2-year survival rate of 65% (17), 3-year survival rate of 27% (7), 4-year survival rate of 23% (6) and 5-year survival rate of 15% (4) with median survival of 27.2 months, which were significantly higher compared with the corresponding survival rates of 65% (17), 19% (5), 3% (1), 3% (1) and 3% (1), respectively, in the 26 patients with below-the-median M1/M2 ratio with Median Survival of 15.5 months with $P = 0.001$ ($P < 0.05$) (Fig. 4, Table 2). To determine whether the macrophage density is independently associated with patient's survival time, the multivariate Cox proportional hazards analysis was used. Extent of the tumour (T), spread to regional lymph nodes (N) and differentiation grade (G) were included in the multivariate analysis along with macrophage density M1 and the M1/M2 ratio. In the multivariate analysis, we found that only the M1/M2 ratio was a positive independent predictor of patient's survival time ($P = 0.001$; hazard ratio 0.410) (Table 2). The M1 macrophage densities had no statistically significant association with patient's survival time in the multivariate analysis ($P > 0.05$).

Discussion

Macrophages are one of the major populations of tumour-infiltrating immune cells. In most of the solid tumours, however, the existence of TAM is advantageous for tumour growth and metastasis [1]. It is demonstrated that tumour escape has been linked with a switch from M1 activation in the early tumour initiation process towards M2-like phenotype during tumour progression [22]. M1 and M2 subsets differ in terms of phenotype and functions. M1 cells have high microbicidal activity, immuno-stimulatory functions and tumour cytotoxicity. On the other hand, M2 cells produce interleukin 10 (IL-10) and

Table 2 Correlation between the M1 density and M1/M2 ratio and overall survival

Macrophage density	Patients N	Survival rate (%)					Median survival months (CI; ±SD)	P	
		1-year	2-years	3-years	4-years	5-years		Univariate	Multivariate
M1									
Above the median	27	81	55	26	22	18	25.6 (22.33-44.85; ±29.86)	0.041	0.314
Below the median	25	72	24	4	4	4	17.1 (13.66-27.98; ±18.28)		
M1/M2 ratio									
Above the median	26	88	65	27	23	15	27.2 (25.45-47.51; ±28.72)	0.001	0.001
Below the median	26	65	19	3	3	3	15.5 (11.36-25.50; ±18.40)		

CI: confidence interval; n: number; SD: standard deviation.

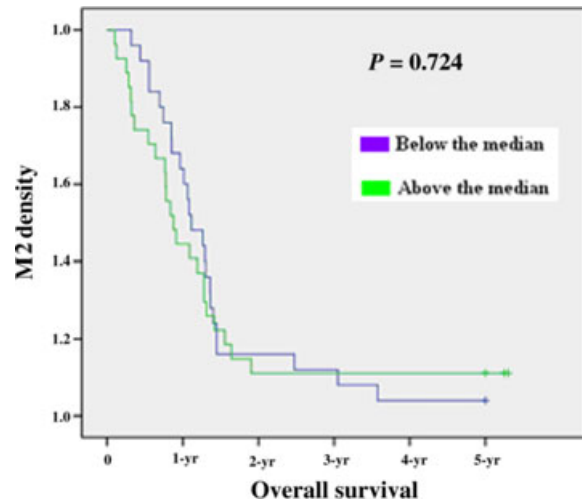


Fig. 3 Kaplan–Meier 5-year survival curves according to M2 polarization.

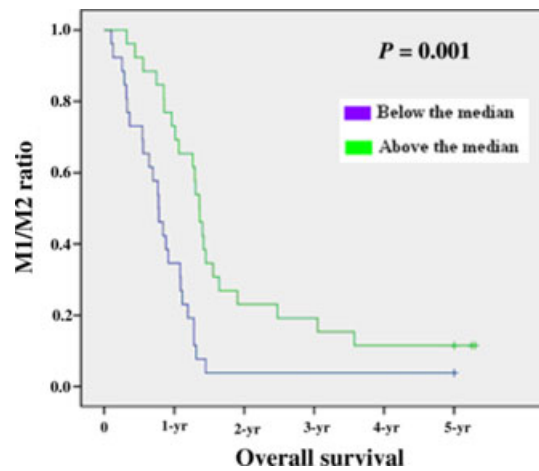


Fig. 4 Kaplan–Meier 5-year survival curves according to M1/M2 ratio.

transforming growth factor β (TGF- β) leading to a suppression of general antitumour immune responses, promoting tumour neoangiogenesis by the secretion of pro-angiogenic factors and defining the invasive microenvironment to facilitate tumour metastasis and dissemination [23]. Anyway, at present, there is conflicting evidence regarding the role of tumour macrophage infiltrate in influencing patients survival. In many human neoplasms including lung, breast, cervix, bladder, ovary and pancreas cancers, the presence of extensive TAM infiltrate correlates with poor prognosis. In other tumours, including those of the brain and prostate, there is conflicting evidence regarding the role of macrophages in survival outcome [1, 24–27]. The basis for these conflicting data may be explained considering that in these studies tumour-associated macrophages were detected only by the immunohistochemical analysis of CD68⁺ cells. Matter of fact, CD68 expression is shared between M1 and M2 phenotypes and the

use of CD68 as sole could not represent a reliable marker in evaluating the real impact of the two subtypes with almost opposite biological properties. Only two studies have analysed the relationship between M1 and M2 macrophages and prognosis using a double IHC staining to better characterize the two subsets of TAM. These reports demonstrated a significant direct correlation between M1 phenotype infiltrate and the survival time of patients affected by non-small cells lung cancer (NSCLC) [20, 21]. In our study, we used double-staining for CD68/NOS2 as markers for M1 macrophages and CD68/CD163 as markers for M2 macrophages to be in accordance with the most part of previously published studies that performed a phenotypic characterization of macrophages polarization [20, 25, 28–34]. The haemoglobin scavenger receptor, CD163, is expressed on tissue macrophages and monocytes after M2 polarization [35]. Conversely, macrophages M1 polarized by exposure to interferon (IFN)- γ or LPS up-regulate inducible nitric oxide synthase (iNOS) to convert into nitric oxide that combining with oxygen radicals lead to the formation of cytotoxic peroxynitrite [36]. These markers are not absolutely specific, for example CD68 has been found in immature CD1a-positive dendritic cells [37, 38], CD163 is also expressed in some dendritic cells [39], and iNOS is expressed by endothelial cells [40] as well as by arterial wall smooth muscle cells [41]. For these reasons, we paid particular attention to cell morphology to minimize these potential bias: in this direction we used DAPI as nuclear morphological marker and we counted as positive merely nucleate cell avoiding possibility to count the same cell more than once.

At present, gastric cancer has poor overall survival at 5 years. The therapeutic approach is multidisciplinary and the surgery plays a central role [42], even if the overall survival after radical surgery remains poor. Only 29% of patients undergoing a D2 linfectomy and 21% of those undergoing a D1 linfectomy are alive at 15 years from surgery. Moreover, radical surgery in gastric cancer is often associated with important comorbidities [43]. The discovery of new and reli-

able bio-markers able to select patients who really benefit from surgery is an urgent need in clinical practice.

Currently, the only proven prognostic indicators are represented by clinical-pathological factors such as age, sex, gastric wall infiltration, locoregional nodal involvement, Laurens' histology and margins. Furthermore, in the last years, a growing attention was paid to new molecular prognostic markers related to cancer cell biology while few data are available about the role of tumour microenvironment in predicting patient's outcome. Two recent works demonstrated that gastric cancer patients with a high TAM count showed poorer surgical outcome than those with a low TAM count [16, 44]. On the contrary, this is the first study investigating the two forms of macrophages population in gastric cancer. We demonstrated that the M1 macrophage density is a prognostic factor in univariate analysis in accordance with previous reports on the association of M1-survival time in patients affected by non-small cells lung cancer [20, 21]. More interestingly, in our experience, only the M1/M2 ratio was an independent prognostic factor. Therefore, the cellular and molecular interactions between M1 and M2 population appear to play a major role in determining prognosis of gastric cancer patients. These data support future larger prospective confirming studies investigating the prognostic role of TAM polarization in radically resected gastric cancer with the aim to discriminate patients who could take the most advantage from surgery. Finally, these results highlight new therapeutic horizons involving strategies aiming to reverse TAM phenotype in gastric cancer.

Conflicts of interest

The authors do not have any potential or actual, personal, political or financial interest in the material, information or techniques described in the paper.

References

1. **Bingle L, Brown NJ, Lewis CE.** The role of tumour-associated macrophages in tumour progression: implications for new anticancer therapies. *J Pathol.* 2002; 196: 254–65.
2. **Andreu P, Johansson M, Affara NI, et al.** Fc γ activation regulates inflammation-associated squamous carcinogenesis. *Cancer Cell.* 2010; 17: 121–34.
3. **de Visser KE, Korets LV, Coussens LM.** *De novo* carcinogenesis promoted by chronic inflammation is B lymphocyte dependent. *Cancer Cell.* 2005; 7: 411–23.
4. **Nardin A, Abastado JP.** Macrophages and cancer. *Front Biosci.* 2008; 13: 3494–505.
5. **Yang XD, Ai W, Asfaha S, et al.** Histamine deficiency promotes inflammation-associated carcinogenesis through reduced myeloid maturation and accumulation of CD11b⁺Ly6G⁺ immature myeloid cells. *Nat Med.* 2011; 17: 87–95.
6. **Sierra JR, Corso S, Caione L, et al.** Tumor angiogenesis and progression are enhanced by Sema4D produced by tumor-associated macrophages. *J Exp Med.* 2008; 205: 1673–85.
7. **Gordon S.** Alternative activation of macrophages. *Nat Rev Immunol.* 2003; 3: 23–35.
8. **Solinias G, Germano G, Mantovani A, et al.** Tumor-associated macrophages (TAM) as major players of the cancer-related inflammation. *J Leukoc Biol.* 2009; 86: 1065–73.
9. **Mantovani A, Sica A, Locati M.** New vistas on macrophage differentiation and activation. *Eur J Immunol.* 2007; 37: 14–6.
10. **Mantovani A, Sica A, Locati M.** Macrophage polarization comes of age. *Immunity.* 2005; 23: 344–6.
11. **Baj-Krzyworzeka M, Szatanek R, Weglarczyk K, et al.** Tumour-derived microvesicles modulate biological activity of human monocytes. *Immunol Lett.* 2007; 113: 76–82.
12. **Mantovani A, Sozzani S, Locati M, et al.** Macrophage polarization: tumor-associated macrophages as a paradigm for polarized M2 mononuclear phagocytes. *Trends Immunol.* 2002; 23: 549–55.
13. **Mantovani A, Sica A.** Macrophages, innate immunity and cancer: balance, tolerance, and diversity. *Curr Opin Immunol.* 2010; 22: 231–7.
14. **Mantovani A, Sica A, Allavena P, et al.** Tumor-associated macrophages and the related myeloid-derived suppressor cells as a paradigm of the diversity of macrophage

- activation. *Hum Immunol.* 2009; 70: 325–30.
15. **Ohta M, Kitadai Y, Tanaka S, et al.** Monocyte chemoattractant protein-1 expression correlates with macrophage infiltration and tumor vascularity in human gastric carcinomas. *Int J Oncol.* 2003; 22: 773–8.
 16. **Ishigami S, Natsugoe S, Tokuda K, et al.** Tumor-associated macrophage (TAM) infiltration in gastric cancer. *Anticancer Res.* 2003; 23: 4079–83.
 17. **Bosman FT, Carneiro F, Hruban RH, et al.** *WHO classification of tumours of the digestive system.* 4th ed. Lyon, France: IARC Press, International Agency for Research on Cancer; 2010.
 18. **Sobin LH, Gospodarowicz MK, Wittekind C, eds.** *TNM classification of malignant tumours.* 7th ed. Weinheim, Germany: Wiley; 2009. pp. 19–20.
 19. **Peto R, Pike MC, Armitage P, et al.** Design and analysis of randomized clinical trials requiring prolonged observation of each patient. II. Analysis and examples. *Br J Cancer.* 1977; 35: 1–39.
 20. **Ohri CM, Shikotra A, Green RH, et al.** Macrophages within NSCLC tumour islets are predominantly of a cytotoxic M1 phenotype associated with extended survival. *Eur Respir J.* 2009; 33: 118–26.
 21. **Ma J, Liu L, Che G, et al.** The M1 form of tumor-associated macrophages in non-small cell lung cancer is positively associated with survival time. *BMC Cancer.* 2010; 10: 112.
 22. **Schmieder A, Michel J, Schonhaar K, et al.** Differentiation and gene expression profile of tumor-associated macrophages. *Semin Cancer Biol.* 2012; 22: 289–97.
 23. **Sica A, Larghi P, Mancino A, et al.** Macrophage polarization in tumour progression. *Semin Cancer Biol.* 2008; 18: 349–55.
 24. **Song L, Asgharzadeh S, Salo J, et al.** Valpha24-invariant NKT cells mediate antitumor activity via killing of tumor-associated macrophages. *J Clin Invest.* 2009; 119: 1524–36.
 25. **Jensen TO, Schmidt H, Moller HJ, et al.** Macrophage markers in serum and tumor have prognostic impact in American Joint Committee on Cancer stage I/II melanoma. *J Clin Oncol.* 2009; 27: 3330–7.
 26. **Kurahara H, Shinchi H, Mataka Y, et al.** Significance of M2-polarized tumor-associated macrophage in pancreatic cancer. *J Surg Res.* 2011; 167: 211–9.
 27. **Welsh TJ, Green RH, Richardson D, et al.** Macrophage and mast-cell invasion of tumor cell islets confers a marked survival advantage in non-small-cell lung cancer. *J Clin Oncol.* 2005; 23: 8959–67.
 28. **Kataki A, Scheid P, Piet M, et al.** Tumor infiltrating lymphocytes and macrophages have a potential dual role in lung cancer by supporting both host-defense and tumor progression. *J Lab Clin Med.* 2002; 140: 320–8.
 29. **Balkwill F, Mantovani A.** Inflammation and cancer: back to virchow? *Lancet.* 2001; 357: 539–45.
 30. **Barbera-Guillem E, Nyhus JK, Wolford CC, et al.** Vascular endothelial growth factor secretion by tumor-infiltrating macrophages essentially supports tumor angiogenesis, and IgG immune complexes potentiate the process. *Cancer Res.* 2002; 62: 7042–9.
 31. **Shabo I, Stal O, Olsson H, et al.** Breast cancer expression of CD163, a macrophage scavenger receptor, is related to early distant recurrence and reduced patient survival. *Int J Cancer.* 2008; 123: 780–6.
 32. **Martinez FO, Helming L, Gordon S.** Alternative activation of macrophages: an immunologic functional perspective. *Annu Rev Immunol.* 2009; 27: 451–83.
 33. **Mosser DM, Edwards JP.** Exploring the full spectrum of macrophage activation. *Nat Rev Immunol.* 2008; 8: 958–69.
 34. **Ohri CM, Shikotra A, Green RH, et al.** The tissue microlocalisation and cellular expression of CD163, VEGF, HLA-DR, iNOS, and MRP 8/14 is correlated to clinical outcome in NSCLC. *PLoS ONE.* 2011; 6: e21874.
 35. **Moestrup SK, Moller HJ.** CD163: a regulated hemoglobin scavenger receptor with a role in the anti-inflammatory response. *Ann Med.* 2004; 36: 347–54.
 36. **Stout RD, Jiang C, Matta B, et al.** Macrophages sequentially change their functional phenotype in response to changes in micro-environmental influences. *J Immunol.* 2005; 175: 342–9.
 37. **Foukas PG, Tsilivakos V, Zacharatos P, et al.** Expression of HLA-DR is reduced in tumor infiltrating immune cells (TILCs) and regional lymph nodes of non-small-cell lung carcinomas. A putative mechanism of tumor-induced immunosuppression? *Anticancer Res.* 2001; 21: 2609–15.
 38. **Puhakka A, Kinnula V, Napankangas U, et al.** High expression of nitric oxide synthases is a favorable prognostic sign in non-small cell lung carcinoma. *APMIS.* 2003; 111: 1137–46.
 39. **Tran TA, Kallakury BV, Ambros RA, et al.** Prognostic significance of tumor necrosis factors and their receptors in nonsmall cell lung carcinoma. *Cancer.* 1998; 83: 276–82.
 40. **Binion DG, Fu S, Ramanujam KS, et al.** iNOS expression in human intestinal microvascular endothelial cells inhibits leukocyte adhesion. *Am J Physiol.* 1998; 275: G592–603.
 41. **Luoma JS, Stralin P, Marklund SL, et al.** Expression of extracellular SOD and iNOS in macrophages and smooth muscle cells in human and rabbit atherosclerotic lesions: colocalization with epitopes characteristic of oxidized LDL and peroxynitrite-modified proteins. *Arterioscler Thromb Vasc Biol.* 1998; 18: 157–67.
 42. **Cunningham D, Allum WH, Stenning SP, et al.** Perioperative chemotherapy versus surgery alone for resectable gastroesophageal cancer. *N Engl J Med.* 2006; 355: 11–20.
 43. **Cuschieri A, Fayers P, Fielding J, et al.** Postoperative morbidity and mortality after D1 and D2 resections for gastric cancer: preliminary results of the mrc randomised controlled surgical trial. The surgical cooperative group. *Lancet.* 1996; 347: 995–9.
 44. **Ohno S, Inagawa H, Dhar DK, et al.** Role of tumor-associated macrophages (TAM) in advanced gastric carcinoma: the impact on FasL-mediated counterattack. *Anticancer Res.* 2005; 25: 463–70.