

IGF2 differentially methylated region hypomethylation in relation to pathological and molecular features of serrated lesions

Takafumi Naito, Katsuhiko Nosho, Miki Ito, Hisayoshi Igarashi, Kei Mitsushashi, Shinji Yoshii, Hironori Aoki, Masafumi Nomura, Yasutaka Sukawa, Eiichiro Yamamoto, Yasushi Adachi, Hiroaki Takahashi, Masao Hosokawa, Masahiro Fujita, Toshinao Takenouchi, Reo Maruyama, Hiromu Suzuki, Yoshifumi Baba, Kohzoh Imai, Hiroyuki Yamamoto, Shuji Ogino, Yasuhisa Shinomura

Takafumi Naito, Katsuhiko Nosho, Miki Ito, Hisayoshi Igarashi, Kei Mitsushashi, Eiichiro Yamamoto, Yasushi Adachi, Yasuhisa Shinomura, Department of Gastroenterology, Rheumatology and Clinical Immunology, Sapporo Medical University School of Medicine, Sapporo 060-8543, Japan
Shinji Yoshii, Hiroaki Takahashi, Department of Gastroenterology, Keiyukai Sapporo Hospital, Sapporo 003-0027, Japan
Hironori Aoki, Masafumi Nomura, Center for Gastroenterology, Teine-Keijinkai Hospital, Sapporo 006-0811, Japan
Yasutaka Sukawa, Shuji Ogino, Department of Medical Oncology, Dana-Farber Cancer Institute, Boston, MA 02115, United States
Masao Hosokawa, Department of Surgery, Keiyukai Sapporo Hospital, Sapporo 003-0027, Japan
Masahiro Fujita, Toshinao Takenouchi, Department of Pathology, Keiyukai Sapporo Hospital, Sapporo 003-0027, Japan
Reo Maruyama, Hiromu Suzuki, Department of Molecular Biology, Sapporo Medical University School of Medicine, Sapporo 060-8543, Japan
Yoshifumi Baba, Department of Gastroenterological Surgery, Graduate School of Medical Science, Kumamoto University, Kumamoto 860-0862, Japan
Kohzoh Imai, Division of Cancer Research, The Institute of Medical Science, The University of Tokyo, Tokyo 108-8639, Japan
Hiroyuki Yamamoto, Division of Gastroenterology and Hepatology, Department of Internal Medicine, St. Marianna University School of Medicine, Kawasaki 216-8511, Japan
Author contributions: Naito T and Nosho K designed the research, analyzed the data and wrote the manuscript; Sukawa Y, Adachi Y, Yamamoto E, Maruyama R and Suzuki H analyzed the data; Naito T, Ito M, Igarashi H and Mitsushashi K performed experiments; Yoshii S, Aoki H, Nomura M, Takahashi H, Hosokawa M, Fujita M and Takenouchi T provided the collection of the human material and analyzed the data; Baba Y, Imai K, Yamamoto H, Ogino S and Shinomura Y edited the manuscript; Nosho K and Ogino S helped interpretation and drafting of this manuscript.
Supported by The Japan Society for the Promotion of Science (JSPS) Grant-in-Aid for Scientific Research, grant No. 23790800 (to Nosho K) and 23390200 (to Shinomura Y); A-STEP (Adaptable and Seamless Technology Transfer Program through Target-

driven R and D) (to Nosho K); Daiwa Securities Health Foundation (to Nosho K); Kobayashi Foundation for Cancer Research (to Nosho K); Sagawa Foundation for Promotion of Cancer Research (to Nosho K); Suzuken Memorial Foundation (to Nosho K), and Takeda Science Foundation (to Nosho K); and USA National Institute of Health, grant number R01 CA151993 (to Ogino S)
Correspondence to: Katsuhiko Nosho, MD, PhD, Department of Gastroenterology, Rheumatology and Clinical Immunology, Sapporo Medical University School of Medicine, S-1, W-16, Chou-ku, Sapporo 060-8543, Japan. nosho@sapmed.ac.jp
Telephone: +81-11-6112111 Fax: +81-11-6112282
Received: January 11, 2014 Revised: March 1, 2014
Accepted: April 21, 2014
Published online: August 7, 2014

Abstract

AIM: To investigate *insulin-like growth factor 2 (IGF2)* differentially methylated region (DMR)0 hypomethylation in relation to clinicopathological and molecular features in colorectal serrated lesions.

METHODS: To accurately analyze the association between the histological types and molecular features of each type of serrated lesion, we consecutively collected 1386 formalin-fixed paraffin-embedded tissue specimens that comprised all histological types [hyperplastic polyps (HPs, $n = 121$), sessile serrated adenomas (SSAs, $n = 132$), traditional serrated adenomas (TSAs, $n = 111$), non-serrated adenomas ($n = 195$), and colorectal cancers (CRCs, $n = 827$)]. We evaluated the methylation levels of *IGF2* DMR0 and long interspersed nucleotide element-1 (LINE-1) in HPs ($n = 115$), SSAs ($n = 120$), SSAs with cytological dysplasia ($n = 10$), TSAs ($n = 91$), TSAs with high-grade dysplasia (HGD) ($n = 15$), non-serrated adenomas ($n = 80$), non-serrated adeno-

mas with HGD ($n = 105$), and CRCs ($n = 794$). For the accurate quantification of the relative methylation levels (scale 0%-100%) of *IGF2* DMR0 and LINE-1, we used bisulfite pyrosequencing method. Tumor specimens were analyzed for microsatellite instability, *KRAS* (codons 12 and 13), *BRAF* (*V600E*), and *PIK3CA* (exons 9 and 20) mutations; *MLH1* and *MGMT* methylation; and *IGF2* expression by immunohistochemistry.

RESULTS: The distribution of the *IGF2* DMR0 methylation level in 351 serrated lesions and 185 non-serrated adenomas (with or without HGD) was as follows: mean 61.7, median 62.5, SD 18.0, range 5.0-99.0, interquartile range 49.5-74.4. The *IGF2* DMR0 methylation level was divided into quartiles (Q1 ≥ 74.5 , Q2 62.6-74.4, Q3 49.6-62.5, Q4 ≤ 49.5) for further analysis. With regard to the histological type, the *IGF2* DMR0 methylation levels of SSAs (mean \pm SD, 73.1 \pm 12.3) were significantly higher than those of HPs (61.9 \pm 20.5), TSAs (61.6 \pm 19.6), and non-serrated adenomas (59.0 \pm 15.8) ($P < 0.0001$). The *IGF2* DMR0 methylation level was inversely correlated with the *IGF2* expression level ($r = -0.21$, $P = 0.0051$). *IGF2* DMR0 hypomethylation was less frequently detected in SSAs compared with HPs, TSAs, and non-serrated adenomas ($P < 0.0001$). Multivariate logistic regression analysis also showed that *IGF2* DMR0 hypomethylation was inversely associated with SSAs ($P < 0.0001$). The methylation levels of *IGF2* DMR0 and LINE-1 in TSAs with HGD (50.2 \pm 18.7 and 55.7 \pm 5.4, respectively) were significantly lower than those in TSAs (61.6 \pm 19.6 and 58.8 \pm 4.7, respectively) (*IGF2* DMR0, $P = 0.038$; LINE-1, $P = 0.024$).

CONCLUSION: *IGF2* DMR0 hypomethylation may be an infrequent epigenetic alteration in the SSA pathway. Hypomethylation of *IGF2* DMR0 and LINE-1 may play a role in TSA pathway progression.

© 2014 Baishideng Publishing Group Inc. All rights reserved.

Key words: *BRAF*; Colon polyp; Colorectal neoplasia; Colorectum; Genome; Insulin-like growth factor; Long interspersed nucleotide element-1; Microsatellite instability; Serrated pathway

Core tip: The serrated pathway attracts considerable attention as an alternative colorectal cancer (CRC) pathway. We previously reported the association of *insulin-like growth factor 2* (*IGF2*) differentially methylated region (DMR)0 hypomethylation with prognosis and its link to LINE-1 hypomethylation in CRC; however, there have been no studies describing its role in the serrated pathway. Therefore, we evaluated the methylation levels of *IGF2* DMR0 and long interspersed nucleotide element-1 (LINE-1) in 351 serrated lesions and 185 non-serrated adenomas. Our results suggest that the *IGF2* DMR0 may be an infrequent epigenetic alteration in the sessile serrated adenoma pathway. Moreover, we found that the hypomethylation of *IGF2* DMR0 and LINE-1 may play an important role in the progression of traditional serrated adenoma.

Naito T, Noshio K, Ito M, Igarashi H, Mitsuhashi K, Yoshii S, Aoki H, Nomura M, Sukawa Y, Yamamoto E, Adachi Y, Takahashi H, Hosokawa M, Fujita M, Takenouchi T, Maruyama R, Suzuki H, Baba Y, Imai K, Yamamoto H, Ogino S, Shinomura Y. *IGF2* differentially methylated region hypomethylation in relation to pathological and molecular features of serrated lesions. *World J Gastroenterol* 2014; 20(29): 10050-10061 Available from: URL: <http://www.wjnet.com/1007-9327/full/v20/i29/10050.htm> DOI: <http://dx.doi.org/10.3748/wjg.v20.i29.10050>

INTRODUCTION

The serrated neoplasia pathway has attracted considerable attention as an alternative pathway of colorectal cancer (CRC) development, and serrated lesions exhibit unique clinicopathological or molecular features^[1-23]. According to the World Health Organization (WHO) classification^[24], colorectal premalignant (or non-malignant) neoplastic lesions with serrated morphology currently encompass three major categories: hyperplastic polyp (HP), sessile serrated adenoma (SSA), and traditional serrated adenoma (TSA).

SSA and TSA are premalignant lesions, but SSA is the principal serrated precursor of CRCs^[15]. In particular, there are many clinicopathological and molecular similarities between SSA and microsatellite instability (MSI)-high CRC, for example, right-sided predilection, *MLH1* hypermethylation, and frequent *BRAF* mutation^[7,15,17-19,25-28]. Therefore, SSAs are hypothesized to develop in some cases to MSI-high CRCs with *BRAF* mutation in the proximal colon^[7,15,17,25,26,28,29].

In contrast, TSAs are much less common than SSAs, and thus, there are fewer data on their molecular profile^[15,25]. TSAs typically do not show *MLH1* hypermethylation or develop to MSI-high CRCs, but they do commonly have *MGMT* hypermethylation^[15,25,26]. With regard to the *PIK3CA* gene, a previous study reported that no mutation was found in serrated lesions, and that mutations were uncommonly, but exclusively, observed in non-serrated adenomas (1.4%)^[30]. Because some HPs do share molecular features with TSAs (*e.g.*, *KRAS* mutation)^[3,25,26,31], it has been suggested that the TSA pathway (HP-TSA-carcinoma sequence) may diverge from the SSA pathway (HP-SSA-SSA with cytological dysplasia-carcinoma sequence) on the basis of *KRAS* vs *BRAF* mutations and/or *MLH1* vs *MGMT* hypermethylation within subsets of HPs^[15]. However, a definite precursor of TSA has not been established. In addition, the key carcinogenic mechanism involved in this TSA pathway remains largely unknown.

Loss of imprinting (LOI) of *insulin-like growth factor 2* (*IGF2*) has been shown to be associated with an increased risk of CRC^[32,33], suggesting that it may play a role in colorectal carcinogenesis. The imprinting and expression of *IGF2* are controlled by CpG-rich regions known as differentially methylated regions (DMRs)^[34-37]. In particular, *IGF2* DMR0 hypomethylation has been

suggested as a surrogate-biomarker for *IGF2* LOI^[38]. Previously, we reported that *IGF2* DMR0 hypomethylation in CRC was associated with poor prognosis and might be linked to global DNA hypomethylation [long interspersed nucleotide element-1 (LINE-1) hypomethylation]^[38]. However, to date, there have been no studies describing the role of *IGF2* DMR0 hypomethylation in the early stage of colorectal carcinogenesis.

To investigate the role of *IGF2* DMR0 hypomethylation in serrated lesions we examined *IGF2* DMR0 and LINE-1 methylation levels as well as other molecular alterations using a large sample of 1330 colorectal tumors (351 serrated lesions, 185 non-serrated adenomas, and 794 CRCs).

MATERIALS AND METHODS

Histopathological evaluation of tissue specimens of colorectal serrated lesions

Histological findings related to all colorectal serrated lesion specimens were evaluated by a pathologist (Fujita M) who was blinded to the clinical and molecular information. Serrated lesions (HPs, SSAs, and TSAs) were classified on the basis of the current WHO criteria^[24]. HPs were further subdivided into microvesicular HPs and goblet cell HPs.

SSAs are characterized by the presence of a disorganized and distorted crypt growth pattern that is usually easily identifiable upon low-power microscopic examination. Crypts, particularly at the basal portion of the polyp, may appear architecturally distorted, dilated, and/or branched, particularly in the horizontal plane, which leads to the formation of boot, L, or anchor-shaped crypts. The cytology is typically quite bland, but a minor degree of nuclear atypia is allowable, particularly in the crypt bases^[15,25,26].

To accurately analyze the association between the histological types and molecular features of each type of serrated lesion we consecutively collected more than 100 formalin-fixed paraffin-embedded (FFPE) tissue specimens of each histological type (HP, SSA, and TSA). In total, 364 tissue specimens of serrated lesions [121 HPs, 122 SSAs, 10 SSAs with cytological dysplasia, 96 TSAs, and 15 TSAs with high-grade dysplasia (HGD)] from patients who underwent endoscopic resection or other surgical treatment at Sapporo Medical University Hospital, Keiyukai Sapporo Hospital or Teine-Keijinkai Hospital between 2001 and 2012 were available for assessment. All of HPs were microvesicular HPs.

The serrated lesions were classified by location: the proximal colon (cecum, ascending and transverse colon), distal colon (splenic flexure, descending, sigmoid colon) and rectum. Informed consent was obtained from all the patients before specimen collection. This study was approved by the institutional review boards of the participating institutions. The term “prognostic marker” is used throughout this article according to the REMARK Guidelines^[39].

Tissue specimens of CRC and non-serrated adenomas

FFPE tissue specimens of 827 CRCs (stages I–IV), 85 non-serrated adenomas (*i.e.*, tubular or tubulovillous adenomas), and 110 non-serrated adenomas with HGD from patients who underwent surgical treatment or endoscopic resection at the above hospitals were also collected. The criterion for diagnosing cancer was invasion of malignant cells beyond the muscularis mucosa.

DNA extraction and pyrosequencing for *KRAS*, *BRAF*, and *PIK3CA* and MSI analysis

Genomic DNA was extracted from the FFPE tissue specimens of the colorectal tumors using a QIAamp DNA FFPE Tissue Kit (Qiagen, Valencia, CA, United States). PCR and targeted pyrosequencing were then performed using the extracted genomic DNA to determine the presence of *KRAS* (codons 12 and 13), *BRAF* (*V600E*) and *PIK3CA* (exons 9 and 20) mutations^[40,41]. MSI analysis was performed as previously described using 10 microsatellite markers^[14]. MSI-high was defined as instability in $\geq 30\%$ of the markers and MSI-low/microsatellite stable (MSS) as instability in $< 30\%$ of the markers^[14].

Sodium bisulfite treatment and pyrosequencing to measure *IGF2* DMR0 and LINE-1 methylation levels

Bisulfite modification of genomic DNA was performed using a BisulFlash™ DNA Modification Kit (Epigentek, Brooklyn, NY, United States).

We measured the relative methylation level at the *IGF2* DMR0 using a bisulfite-pyrosequencing assay as previously described^[38]. The amount of C relative to the sum of the amounts of C and T at each CpG site was calculated as percentage (scale 0%-100%). We calculated the average of the first and second CpG sites in the *IGF2* DMR0 as the *IGF2* DMR0 methylation level. Likewise, to accurately quantify the LINE-1 methylation levels we utilized a pyrosequencing assay, as previously described^[42].

Pyrosequencing to measure *MGMT* and *MLH1* promoter methylation

Pyrosequencing for *MGMT* and *MLH1* methylation was performed using the PyroMark kit (Qiagen). We used a previously defined cut-off of $\geq 8\%$ methylated alleles for *MGMT* and *MLH1* hypermethylated tumors^[43].

Immunohistochemistry for *IGF2* expression

For *IGF2* staining, we used anti-*IGF2* antibody (Rabbit polyclonal to *IGF2*; Abcam, Cambridge, MA, United States) with a subsequent reaction performed using Target Retrieval Solution, Citrate pH 6 (Dako Cytomation, Carpinteria, CA, United States). In each case, we recorded cytoplasmic *IGF2* expression as no expression, weak expression, moderate expression, or strong expression relative to normal colorectal epithelial cells. *IGF2* expression was visually interpreted by Noshio K, who was unaware of the other data. For the agreement study of *IGF2* expression, 128 randomly selected cases were examined by a second pathologist (by Naito T), who was also unaware

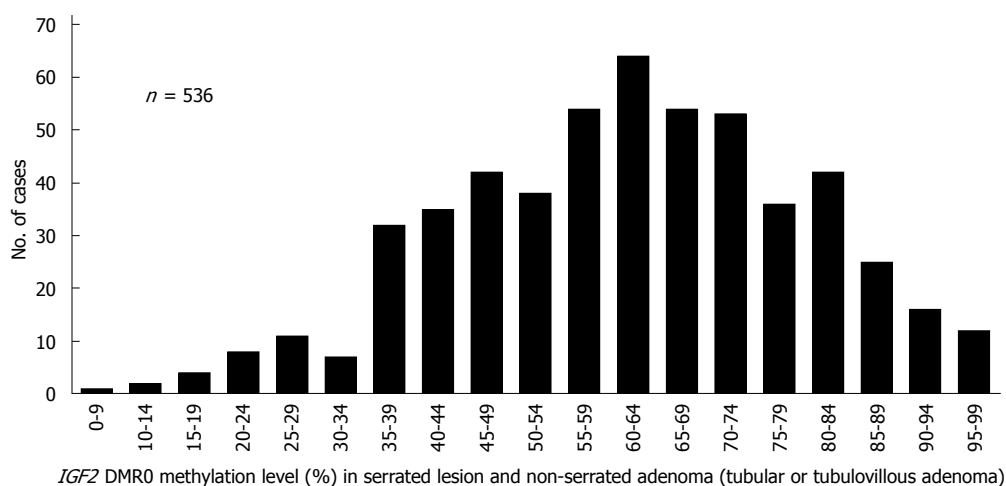


Figure 1 Distribution of *IGF2* differentially methylated region 0 methylation levels in 351 serrated lesions. Hyperplastic polyp, sessile serrated adenoma (SSA), SSA with cytological dysplasia, traditional serrated adenoma (TSA) and TSA with high-grade dysplasia (HGD) and 185 non-serrated adenomas (tubular adenoma, tubular adenoma with HGD, tubulovillous adenoma and tubulovillous adenoma with HGD). DMR: Differentially methylated region; *IGF2*: *Insulin-like growth factor 2*.

of the other data. The concordance between the two pathologists ($P < 0.0001$) was 0.84 ($\kappa = 0.69$), indicating substantial agreement.

Statistical analysis

JMP (version 10) software was used for all statistical analyses (SAS Institute, Cary, NC, United States). All P values were two-sided. Univariate analyses were performed to investigate the clinicopathological and molecular characteristics including *IGF2* DMR0 and LINE-1 hypomethylation, according to histological type, classified as serrated lesion, non-serrated adenoma, and CRC. P values were calculated by analysis of variance for age, tumor size, and the methylation levels of *IGF2* DMR0 and LINE-1 and by χ^2 or Fisher's exact test for all other variables. A multivariate logistic regression analysis was employed to examine associations with *IGF2* DMR0 hypomethylation (as an outcome variable), adjusting for potential confounders. The model initially included sex, age, tumor size, tumor location, histological type, and the LINE-1 methylation level, and MSI, *BRAF*, *KRAS*, and *PIK3CA* mutations. In the CRC-specific survival analysis, the Kaplan-Meier method and log-rank test were used to assess the survival time distribution. The Spearman correlation coefficient was used to assess the correlation of the *IGF2* DMR0 methylation level and *IGF2* expression.

RESULTS

The *IGF2* DMR0 methylation level in serrated lesion and non-serrated adenomas

We assessed 559 FFPE tissue specimens of serrated lesions and non-serrated adenomas in the *IGF2* DMR0 methylation assay and obtained 536 (96%) valid results. The distribution of the *IGF2* DMR0 methylation level in 351 serrated lesions and 185 non-serrated adenomas (with or without HGD) was as follows: mean 61.7, median 62.5, SD 18.0, range 5.0-99.0, interquartile range

49.5-74.4 (all on a 0-100 scale) (Figure 1). The *IGF2* DMR0 methylation level was divided into quartiles (Q1 ≥ 74.5 , Q2 62.6-74.4, Q3 49.6-62.5, Q4 ≤ 49.5) for further analysis.

We evaluated the *IGF2* DMR0 methylation level in serrated lesions (HP, SSA, and TSA) and non-serrated adenomas according to their histological type. The *IGF2* DMR0 methylation levels of SSAs ($n = 120$, mean \pm SD, 73.1 ± 12.3) were significantly higher than those of HPs ($n = 115$, 61.9 ± 20.5 , $P < 0.0001$), TSAs ($n = 91$, 61.6 ± 19.6 , $P < 0.0001$), and non-serrated adenomas ($n = 80$, 59.0 ± 15.8 , $P < 0.0001$) (Figure 2).

IGF2 DMR0 hypomethylation was associated with larger tumor size in serrated lesions and non-serrated adenomas (Table 1). With regard to the histological type, *IGF2* DMR0 hypomethylation was less frequently detected in SSAs than in HPs, TSAs, and non-serrated adenomas ($P < 0.0001$) (Table 1). Multivariate logistic regression analysis also showed the *IGF2* DMR0 hypomethylation was inversely associated with SSAs ($P < 0.0001$).

Association of *IGF2* expression and *IGF2* DMR0 methylation level in serrated lesions and non-serrated adenomas

We examined *IGF2* overexpression in 168 colorectal serrated lesions and non-serrated adenomas. The *IGF2* DMR0 methylation level was inversely correlated with the *IGF2* expression level ($r = -0.21$, $P = 0.0051$).

IGF2 DMR0 methylation level in colorectal cancer

A total of 827 paraffin-embedded CRCs (stages I-IV) were subjected to an *IGF2* DMR0 methylation assay with 794 (96%) valid results. The distribution of the *IGF2* DMR0 methylation level in these 794 CRCs was as follows: mean 54.7, median 55.0, SD 13.7, range 7.5-98.0, interquartile range 46.1-63.0 (all on a 0-100 scale). The *IGF2* DMR0 methylation level was divided into quartiles (Q1 ≥ 63.0 , Q2 55.0-62.9, Q3 46.1-54.9, Q4 ≤ 46.0) for

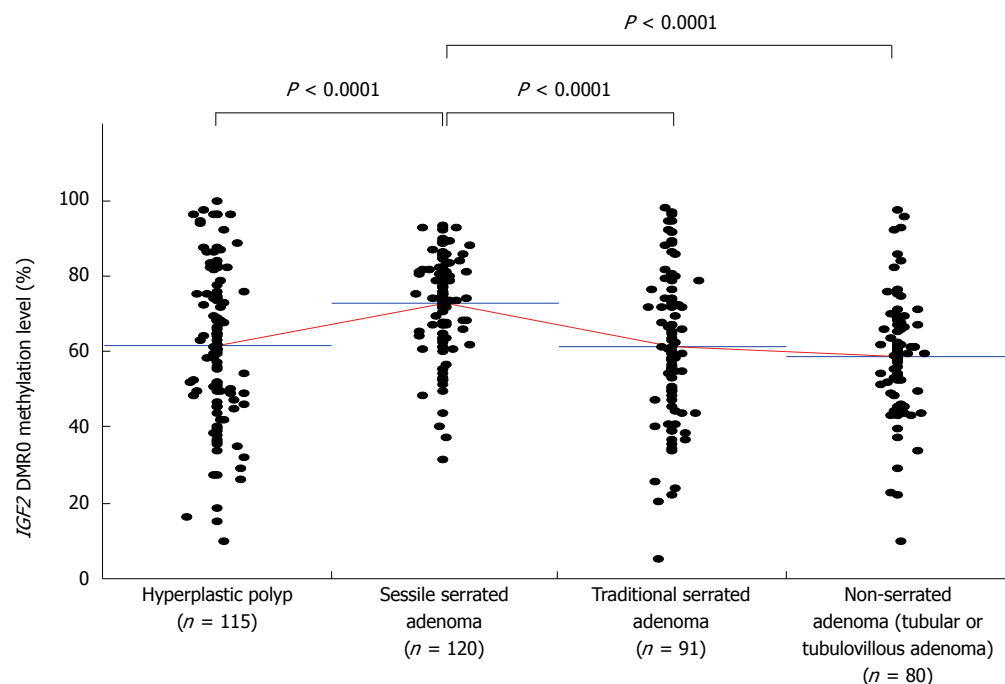


Figure 2 *IGF2* differentially methylated region 0 methylation level according to histological type. *Insulin-like growth factor 2 (IGF2)* differentially methylated region (DMR)0 methylation levels of sessile serrated adenoma (mean \pm SD; 73.1 ± 12.3) were significantly higher compared with those of hyperplastic polyp (61.9 ± 20.5 , $P < 0.0001$), traditional serrated adenoma (61.6 ± 19.6 , $P < 0.0001$), and non-serrated adenoma (59.0 ± 15.8 , $P < 0.0001$). *P*-values were calculated by analysis of variance.

Table 1 *IGF2* differentially methylated region 0 hypomethylation in serrated lesions and non-serrated adenomas *n* (%)

Clinicopathological feature	Total <i>n</i>	<i>IGF2</i> DMR0 methylation (quartile)				<i>P</i> value
		Q1 (≥ 74.5)	Q2 (62.6-74.4)	Q3 (49.6-62.5)	Q4 (≤ 49.5)	
All cases	536	134	130	131	141	
Sex						
Male	326 (61)	78 (58)	80 (62)	92 (70)	76 (54)	0.041
Female	210 (39)	56 (42)	50 (38)	39 (30)	65 (46)	
Age (mean \pm SD)	61.5 ± 12.2	59.9 ± 12.3	60.8 ± 12.0	63.1 ± 11.6	62.3 ± 13.0	0.150
Tumor size (mm) (mean \pm SD)	14.3 ± 11.4	9.9 ± 4.0	13.4 ± 7.4	14.7 ± 11.1	19.1 ± 17.6	< 0.0001
Tumor location						
Rectum	70 (13)	11 (8.5)	14 (11)	18 (14)	27 (20)	0.061
Distal colon	161 (31)	35 (27)	43 (33)	37 (29)	46 (33)	
Proximal colon	296 (56)	84 (65)	72 (56)	75 (58)	65 (47)	
Histological type						
Hyperplastic polyp (HP)	115 (21)	33 (25)	25 (19)	23 (18)	34 (24)	< 0.0001
Sessile serrated adenoma (SSA) without cytological dysplasia	120 (22)	60 (45)	39 (30)	15 (11)	6 (4.3)	
SSA with cytological dysplasia	10 (1.9)	1 (0.8)	3 (2.3)	6 (4.6)	0 (0)	
Traditional serrated adenoma (TSA) without high-grade dysplasia (HGD)	91 (17)	22 (16)	21 (16)	23 (18)	25 (18)	
TSA with HGD	15 (2.8)	2 (1.5)	2 (1.5)	2 (1.5)	9 (6.4)	
Non-serrated adenoma (tubular or tubulovillous adenoma) without HGD	80 (15)	11 (8.2)	17 (13)	32 (24)	20 (14)	
Non-serrated adenoma with HGD	105 (20)	5 (3.7)	23 (18)	30 (23)	47 (33)	

Percentage indicates the proportion of patients of each histological type who met the criteria for a specific clinical or molecular feature. *P* values were calculated by analysis of variance for age and tumor size and by χ^2 or Fisher's exact test for all other variables. The *P* value for significance was adjusted by Bonferroni correction to 0.010 (= 0.05/5).

further analysis.

Colorectal cancer patient survival and *IGF2* DMR0 methylation level

The influence of the *IGF2* DMR0 methylation level on

clinical outcome was assessed in CRC patients. During the follow-up of 398 patients with metastatic CRC (stages III-IV) who were eligible for survival analysis, mortality occurred in 134, including 118 deaths confirmed to be attributable to CRC. The median follow-up period for

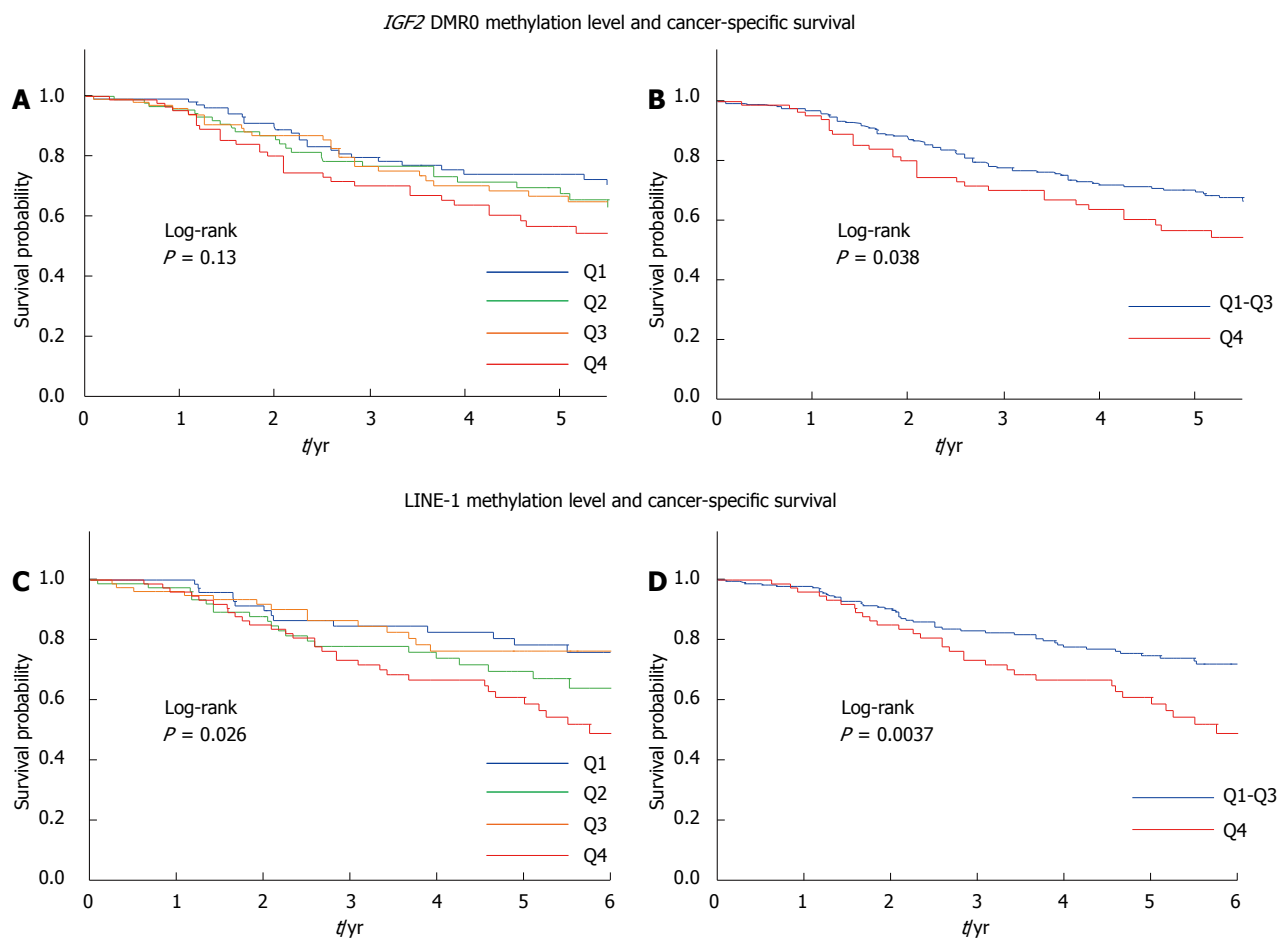


Figure 3 Kaplan-Meier survival curves for colorectal cancer according to the *IGF2* differentially methylated region 0 and long interspersed nucleotide element-1 methylation levels in metastatic colorectal cancers. A: Patients with *Insulin-like growth factor 2* (*IGF2*) differentially methylated region (DMR)0 hypomethylation had a slightly higher mortality rate than those with *IGF2* DMR0 hypermethylation, but this difference was not significant (log-rank test: $P = 0.13$); B: *IGF2* DMR0 hypomethylation (Q4 cases) was significantly associated with unfavorable cancer-specific survival (log-rank test: $P = 0.038$); C: Significantly higher mortality was observed in patients with long interspersed nucleotide element-1 (LINE-1) hypomethylation compared with those with LINE-1 hypermethylation (log-rank test: $P = 0.026$); D: LINE-1 hypomethylation (Q4 cases) was significantly associated with unfavorable cancer-specific survival (log-rank test: $P = 0.0037$).

censored patients was 3.3 years. Kaplan-Meier analysis was performed using categorical variables (Q1, Q2, Q3, and Q4). Slightly but insignificantly higher mortality was observed in patients with *IGF2* DMR0 hypomethylation compared with those without hypomethylation in terms of cancer-specific survival (log-rank test: $P = 0.13$) (Figure 3A). In another Kaplan-Meier analysis, Q4 cases were defined as the “hypomethylated group” and the Q1, Q2, and Q3 cases were combined into a “non-hypomethylated group”; the hypomethylated group (log-rank test: $P = 0.038$) was found to have significantly higher mortality (Figure 3B). Similar results were observed in terms of overall survival (log-rank test: $P = 0.040$) (data not shown).

LINE-1 methylation level and CRC patient survival

The LINE-1 methylation level in CRC was also divided into quartiles (Q1 ≥ 58.7 , Q2 54.8–58.6, Q3 50.8–54.7, and Q4 ≤ 50.7). A significantly higher mortality rate was observed among Q4 cases (log-rank test: $P = 0.0037$) in

the Kaplan-Meier analysis (Figure 3C, D).

Association of histological type and *IGF2* DMR0 and LINE-1 methylation levels as well as other molecular features of serrated lesions and non-serrated adenomas

Table 2 shows the clinicopathological and molecular features of serrated lesions and non-serrated adenomas. No significant difference was observed between SSAs (69.0 ± 10.8) with cytological dysplasia and SSAs without (73.1 ± 12.3) in *IGF2* DMR0 methylation levels ($P = 0.32$). In contrast, MSI-high was more frequently ($P < 0.0001$) found in SSAs with cytological dysplasia [40% (4/10)] than in SSAs [0.8% (1/120)]. With regard to the LINE-1 methylation level, no significant difference was observed between the methylation level and histological type in serrated lesions and non-serrated adenomas ($P = 0.59$).

Mutations of *BRAF*, *KRAS*, and *PIK3CA* were detected in 49%, 19%, and 0.9% of HPs, 87%, 2.5%, and 0% of SSAs, 69%, 17%, and 0% of TSAs and 2.6%, 19%, and 1.3% of non-serrated adenomas, respectively (Table 2).

Table 2 Clinical and molecular features of serrated lesions and non-serrated adenomas (tubular or tubulovillous adenoma) according to histological type *n* (%)

Clinical or molecular feature	Total <i>n</i>	Histological type						<i>P</i> value
		Serrated lesion			Non-serrated adenoma			
		HP	SSA without cytological dysplasia	SSA with cytological dysplasia	TSA without high-grade dysplasia (HGD)	Tubular adenoma without HGD	Tubulovillous adenoma without HGD	
All cases	416	115	120	10	91	77	3	
Sex								
Male	263 (63)	78 (68)	72 (60)	5 (50)	55 (60)	50 (65)	3 (100)	0.36
Female	153 (37)	37 (32)	48 (40)	5 (50)	36 (40)	27 (35)	0 (0)	
Age (mean ± SD)	60.3 ± 11.8	57.5 ± 12.1	57.2 ± 11.6	74.1 ± 4.7	60.9 ± 12.3	66.6 ± 11.4	66.0 ± 8.9	< 0.0001
Tumor size (mm) (mean ± SD)	10.5 ± 5.4	9.3 ± 3.7	11.6 ± 5.4	12.3 ± 6.4	9.7 ± 4.7	10.9 ± 7.2	15.7 ± 13.2	0.0069
Tumor location								
Rectum	42 (10)	15 (13)	0 (0)	0 (0)	16 (18)	10 (14)	1 (33)	< 0.0001
Distal colon	127 (31)	44 (39)	17 (14)	1 (10)	39 (44)	25 (34)	1 (33)	
Proximal colon	239 (59)	54 (48)	103 (86)	9 (90)	34 (38)	38 (52)	1 (33)	
<i>BRAF</i> mutation								
Wild-type	183 (44)	59 (51)	16 (13)	2 (20)	28 (31)	75 (97)	3 (100)	< 0.0001
Mutant	231 (55)	56 (49)	104 (87)	8 (80)	61 (69)	2 (2.6)	0 (0)	
<i>KRAS</i> mutation								
Wild-type	357 (87)	92 (81)	117 (98)	10 (100)	74 (83)	62 (81)	2 (67)	< 0.0001
Mutant	55 (13)	21 (19)	3 (2.5)	0 (0)	15 (17)	15 (19)	1 (33)	
<i>PIK3CA</i> mutation								
Wild-type	406 (99)	113 (99)	117 (100)	10 (100)	89 (100)	74 (99)	3 (100)	0.67
Mutant	2 (0.5)	1 (0.9)	0 (0)	0 (0)	0 (0)	1 (1.3)	0 (0)	
MSI status								
MSS/MSI-low	408 (98)	113 (98)	119 (99)	6 (60)	90 (99)	77 (100)	3 (100)	0.0004
MSI-high	8 (1.9)	2 (1.7)	1 (0.8)	4 (40)	1 (1.1)	0 (0)	0 (0)	
<i>IGF2</i> DMR0 methylation level (mean ± SD)	64.5 ± 17.2	61.9 ± 20.5	73.1 ± 12.3	69.0 ± 10.8	61.6 ± 19.6	58.9 ± 16.1	61.0 ± 7.1	< 0.0001
LINE-1 methylation level (mean ± SD)	58.7 ± 5.0	58.6 ± 3.4	58.1 ± 5.4	58.3 ± 8.4	58.8 ± 4.7	59.4 ± 6.0	60.9 ± 1.4	0.59

Percentage indicates the proportion of patients of each histological type who met the criteria for a specific clinical or molecular feature. *P* values were calculated by analysis of variance for age, tumor size, methylation levels of *IGF2* DMR0 and LINE-1 and by χ^2 or Fisher's exact test for all other variables. The *P* value for significance was adjusted by Bonferroni correction to 0.0050 (= 0.05/10). HGD: High-grade dysplasia; HP: Hyperplastic polyp; MSI: Microsatellite instability; MSS: Microsatellite stable; SSA: Sessile serrated adenoma; TSA: Traditional serrated adenoma; *IGF2*: *Insulin-like growth factor 2*.

***IGF2* DMR0 and LINE-1 hypomethylation in TSAs and non-serrated adenomas with high-grade dysplasia**

Tables 3 and 4 show the clinicopathological and molecular features of the TSAs (with or without HGD), non-serrated adenomas (with or without HGD), and CRCs (stages I-IV). The *IGF2* DMR0 methylation levels in TSAs with HGD (50.2 ± 18.7) were significantly lower than those in TSAs without (61.6 ± 19.6, *P* = 0.038) (Table 3). With regard to LINE-1, the methylation levels in TSAs with HGD (55.7 ± 5.4) were significantly lower than those in TSAs without (58.8 ± 4.7) (*P* = 0.024).

Similarly, the methylation levels of *IGF2* DMR0 (52.0 ± 13.6) and LINE-1 (56.9 ± 5.5) in non-serrated adenomas with HGD were significantly lower than those in non-serrated adenomas without (59.0 ± 15.8, *P* = 0.0016 and 59.5 ± 5.9, *P* = 0.0027, respectively) (Table 3).

DISCUSSION

In this study, we examined the *IGF2* DMR0 and LINE-1 methylation levels as well as other molecular alterations in

351 serrated lesions, 185 non-serrated adenomas, and 794 CRCs. *IGF2* DMR0 hypomethylation was less frequently detected in SSAs than in HPs, TSAs, and non-serrated adenomas. We also found that *IGF2* DMR0 and LINE-1 hypomethylation in TSAs and non-serrated adenomas with HGD were more frequently detected in TSAs and non-serrated adenomas without HGD, suggesting that hypomethylation may play an important role in the progression of these tumors.

In the current study, we confirmed that *IGF2* DMR0 hypomethylation was associated with poor CRC prognosis, suggesting its oncogenic role and malignant potential. In addition, our data showed that the *IGF2* DMR0 methylation level was inversely correlated with the *IGF2* expression level. Therefore, our findings support the validity of the quantitative DNA methylation assay (bisulfite-pyrosequencing) for examining the *IGF2* DMR0 methylation level.

HPs are classified into three subtypes, namely microvesicular HPs, goblet cell HPs, and mucin-poor HPs. Microvesicular and goblet cell HPs are the most com-

Table 3 Clinical and molecular features of sessile serrated adenomas with cytological dysplasia, traditional serrated adenomas, non-serrated adenomas (tubular or tubulovillous adenoma), and colorectal carcinomas according to disease stage *n* (%)

Clinical or molecular feature	Histological type									<i>P</i> value
	SSA with cytological dysplasia	Colorectal adenoma				Colorectal carcinoma				
		TSA without HGD	TSA with HGD	Non-serrated adenoma without HGD	Non-serrated adenoma with HGD	Stage I	Stage II	Stage III	Stage IV	
All cases	10	91	15	80	105	171	217	292	114	
Sex										
Male	5 (50)	55 (60)	9 (60)	53 (66)	54 (51)	107 (63)	123 (57)	168 (58)	73 (64)	0.50
Female	5 (50)	36 (40)	6 (40)	27 (34)	51 (49)	64 (37)	94 (43)	124 (42)	41 (36)	
Age (mean ± SD)	74.1 ± 4.7	60.9 ± 12.3	62.7 ± 13.6	66.6 ± 11.2	66.3 ± 10.5	65.1 ± 11.0	67.4 ± 11.5	66.6 ± 12.5	63.4 ± 9.5	0.0016
Tumor size (mm) (mean ± SD)	12.3 ± 6.4	9.7 ± 4.7	12.8 ± 4.3	11.0 ± 7.4	29.3 ± 17.3	26.3 ± 15.8	53.1 ± 23.5	50.5 ± 22.7	50.9 ± 19.6	< 0.0001
Tumor location										
Rectum	0 (0)	16 (18)	5 (33)	11 (14)	23 (22)	65 (38)	73 (34)	135 (46)	37 (33)	< 0.0001
Distal colon	1 (10)	39 (44)	7 (47)	26 (34)	27 (26)	44 (25)	64 (29)	59 (20)	42 (37)	
Proximal colon	9 (90)	34 (38)	3 (20)	39 (51)	54 (52)	62 (36)	80 (37)	98 (34)	34 (30)	
<i>BRAF</i> mutation										
Wild-type	2 (20)	28 (31)	7 (47)	78 (98)	102 (98)	161 (95)	204 (94)	282 (97)	103 (95)	< 0.0001
Mutant	8 (80)	61 (69)	8 (53)	2 (2.5)	2 (1.9)	9 (5.3)	13 (6.0)	9 (3.0)	6 (5.5)	
<i>KRAS</i> mutation										
Wild-type	10 (100)	74 (83)	11 (73)	64 (80)	48 (46)	108 (64)	145 (69)	202 (70)	84 (74)	< 0.0001
Mutant	0 (0)	15 (17)	4 (27)	16 (20)	57 (54)	62 (36)	66 (31)	88 (30)	29 (26)	
<i>PIK3CA</i> mutation										
Wild-type	10 (100)	89 (100)	14 (93)	77 (99)	99 (94)	161 (94)	194 (89)	249 (85)	103 (90)	< 0.0001
Mutant	0 (0)	0 (0)	1 (6.7)	1 (1.3)	6 (5.7)	10 (5.9)	23 (11)	43 (15)	11 (9.7)	
MSI status										
MSS/MSI-low	6 (60)	90 (99)	15 (100)	80 (100)	105 (100)	163 (95)	198 (91)	276 (95)	110 (96)	< 0.0001
MSI-high	4 (40)	1 (1.1)	0 (0)	0 (0)	0 (0)	8 (4.7)	19 (8.8)	16 (5.5)	4 (3.5)	
<i>IGF2</i> DMR0 methylation level (mean ± SD)	69.0 ± 10.8	61.6 ± 19.6	50.2 ± 18.7	59.0 ± 15.8	52.0 ± 13.6	55.7 ± 15.8	53.4 ± 13.3	55.5 ± 12.9	53.1 ± 12.9	< 0.0001
LINE-1 methylation level (mean ± SD)	58.3 ± 8.4	58.8 ± 4.7	55.7 ± 5.4	59.5 ± 5.9	56.9 ± 5.5	55.8 ± 7.2	53.1 ± 6.2	55.1 ± 6.5	54.1 ± 7.6	< 0.0001

Percentage indicates the proportion of patients of each histological type who met the criteria for a specific clinical or molecular feature. *P* values were calculated by analysis of variance for age, tumor size, methylation levels of *IGF2* DMR0 and LINE-1 and by χ^2 or Fisher's exact test for all other variables. The *P* value for significance was adjusted by Bonferroni correction to 0.0050 (= 0.05/10). HGD: High-grade dysplasia; HP: Hyperplastic polyp; MSI: Microsatellite instability; MSS: Microsatellite stable; SSA: Sessile serrated adenoma; TSA: Traditional serrated adenoma; *IGF2*: *Insulin-like growth factor 2*.

mon, whereas mucin-poor HPs are rare^[44]. Recent studies have reported that microvesicular HPs may be a precursor lesion of SSAs and that borderline lesions between microvesicular HPs and SSAs can occur^[25,26,28]. In the current study, we found that the *IGF2* DMR0 methylation levels of SSAs were significantly higher compared with those of HPs (microvesicular HPs), TSAs, and non-serrated adenomas. Our data also showed that *IGF2* DMR0 hypomethylation was less frequently detected in SSAs compared with HPs, TSAs, and non-serrated adenomas.

Our current study had some limitations due to its cross-sectional nature and the fact that unknown bias (*i.e.*, selection bias) may confound the results. Nevertheless, our multivariate regression analysis was adjusted for potential confounders including age, tumor size, tumor location, LINE-1 methylation level, and *BRAF* and *KRAS* mutation. The results demonstrate that *IGF2* DMR0 hypomethylation is inversely associated with SSAs. Moreover, our data have shown that the *IGF2* DMR0 methylation levels of SSAs with cytological dysplasia were higher than those of HPs, suggesting that HPs (microvesicular

HPs) or SSAs with *IGF2* DMR0 hypomethylation may tend not to progress to the typical SSA pathway [HP-SSA-SSA with cytological dysplasia-carcinoma (MSI-high) sequence] but to the alternate pathway. Thus, our finding of differential patterns of *IGF2* DMR0 hypomethylation in serrated lesions may be a clue for elucidating the differentiation of serrated lesions.

In the current study, *IGF2* DMR0 hypomethylation was found in TSAs and hypomethylation was more frequently detected in TSAs with HGD when compared with TSAs without HGD. These results may imply that *IGF2* DMR0 hypomethylation can occur in the early stage of the TSA pathway and that TSAs with *IGF2* DMR0 hypomethylation are precursor lesions that progress to TSAs with HGD or CRCs with hypomethylation. In other words, TSAs without *IGF2* DMR0 hypomethylation may tend not to progress to TSAs with HGD. Otherwise, TSAs without *IGF2* DMR0 hypomethylation may tend to rapidly develop to CRCs; therefore, they are infrequently detected in the stage of TSA with HGD. However, because the number of TSA with HGD sam-

Table 4 Clinicopathological and molecular features of fifteen traditional serrated adenomas with high-grade dysplasia

No.	Age/sex	Location	Size (mm)	KRAS mutation	BRAF mutation	PIK3CA mutation	MGMT methylation	MLH1 methylation	MSI status	LINE-1 methylation level	IGF2 DMR0 methylation level	IGF2 expression
1	75/M	Rectum	8	c.35G>A (p.G12D)	Wild	Wild	(-)	(-)	MSS/MSI-low	58	70	Weak
2	54/F	Sigmoid colon	20	c.35G>A (p.G12D)	Wild	Wild	(+)	(-)	MSS/MSI-low	53.7	39.5	Strong
3	62/F	Transverse colon	15	c.38G>A (p.G13D)	Wild	Wild	(+)	(-)	MSS/MSI-low	53.3	72.0	No expression
4	84/M	Rectum	5	c.35G>A (p.G12D)	Wild	Wild	(-)	(-)	MSS/MSI-low	65.0	26.5	Moderate
5	85/M	Sigmoid colon	12	Wild	c.1799T>A (p.V600E)	Wild	(-)	(-)	MSS/MSI-low	58.0	45.5	Strong
6	48/M	Sigmoid colon	20	Wild	c.1799T>A (p.V600E)	Wild	(-)	(-)	MSS/MSI-low	53.7	40.5	Moderate
7	69/M	Sigmoid colon	10	Wild	c.1799T>A (p.V600E)	Wild	(-)	(-)	MSS/MSI-low	58.7	52.0	No expression
8	60/M	Descending colon	9	Wild	c.1799T>A (p.V600E)	Wild	(-)	(-)	MSS/MSI-low	59.0	41.5	Moderate
9	34/M	Sigmoid colon	18	Wild	c.1799T>A (p.V600E)	Wild	(+)	(-)	MSS/MSI-low	57.3	42.0	Strong
10	61/M	Rectum	10	Wild	c.1799T>A (p.V600E)	Wild	(-)	(-)	MSS/MSI-low	56.7	29.0	Strong
11	52/F	Ascending colon	15	Wild	c.1799T>A (p.V600E)	Wild	(+)	(+)	MSS/MSI-low	57.0	57.0	Moderate
12	70/F	Rectum	13	Wild	c.1799T>A (p.V600E)	Wild	(+)	(+)	MSS/MSI-low	63.0	84.5	Weak
13	66/F	Ascending colon	12	Wild	Wild	c.1624G>A (p.E542K)	(-)	(-)	MSS/MSI-low	49.7	28.0	Moderate
14	52/M	Sigmoid colon	12	Wild	Wild	Wild	(-)	(-)	MSS/MSI-low	48.0	44.5	Moderate
15	69/F	Rectum	13	Wild	Wild	Wild	(+)	(-)	MSS/MSI-low	44.3	80.0	Weak

HGD: High-grade dysplasia; MSI: Microsatellite instability; MSS: Microsatellite stable; TSA: Traditional serrated adenoma.

ples was small ($n = 15$), our findings require further confirmation from future independent studies.

Global DNA hypomethylation is associated with genomic instability, which leads to cancer^[45-50]. As the LINE-1 or L1 retrotransposon constitutes a substantial portion (ca. 17%) of the human genome, the level of LINE-1 methylation is regarded as a surrogate marker of global DNA methylation^[46,51]. We previously reported that LINE-1 methylation is highly variable but is strongly associated with a poor prognosis in CRC^[45]. However, no previous study has reported the role of LINE-1 hypomethylation in serrated lesions. In serrated lesions, unlike the *IGF2* DMR0 methylation level, no significant difference was observed between the LINE-1 methylation level and histological type. We also found that the LINE-1 methylation levels in TSAs with HGD were significantly lower than those in TSAs. These results suggest that both *IGF2* DMR0 hypomethylation and LINE-1 hypomethylation are important epigenetic alterations in the progression of TSAs. Because the carcinogenic mechanism remains unclear, further analyses are needed to clarify the role in the TSA pathway of the hypomethylation of these locations.

Previous studies have reported that SSAs with cytological dysplasia have accumulated genetic abnormalities and are at a high risk of progression to colorectal carcinoma^[7,26,28]. Loss of staining for MLH1 leads to MSI and repeat tract mutation in genes such as *TGFβRII* is restricted to lesions with cytological dysplasia in SSAs^[26,27,52,53]. In the current study, MSI-high was more frequently detected in SSAs with cytological dysplasia than in SSAs without. Our data indicate that in SSAs with cytological dysplasia, it is not hypomethylation of *IGF2* DMR0 or LINE-1 but rather MSI due to *MLH1* hypermethylation that plays an important role in the evolution to colorectal carcinoma.

The RAS-RAF-MEK-ERK signaling pathway is commonly altered in CRC and serrated lesions through oncogenic mutation of either *BR4F* or *KR4S*^[15,21,25]. Moreover, CRCs with serrated morphology are particularly prone to mutations targeted by anti-epidermal growth factor receptor therapy. Therefore, as the variety of molecularly targeted agents for CRC increases, understanding of molecular alterations is becoming increasingly important^[21,40]. *BR4F* and *KR4S* mutations are mutually exclusive and demonstrate a subtype specificity in serrated lesions^[10,15,17-19,28]; they are most likely initiating events in the majority of HPS^[54]. Previous studies have reported that *BR4F* is mutated with increasing frequency in SSAs (60%-100%)^[3,5,9,11,16]. In the current study, *BR4F* mutations were detected in 49% of HPS and 87% of SSAs, respectively. Therefore, our data relating to the frequency of *BR4F* mutations in SSAs are consistent with previous reports. The activation of the RAS-RAF-MEK-ERK signaling pathway by *BR4F* or *KR4S* mutation is also common in TSAs. Previous studies have reported *BR4F* mutation rates in TSAs ranging from 27% to 55%^[6,8,16,55], compared to *KR4S* mutation rates of 29%-46%^[6,8]. In the cur-

rent study, *BRAF* and *KRAS* mutations were detected in 69% and 17% of TSAs, respectively. Thus, the wide variation in the relative proportion of *BRAF* vs *KRAS* mutations in different studies reflects differences in histological classification or small sample size.

In conclusion, we found that *IGF2* DMR0 hypomethylation can occur in the early stage of any histological types of serrated lesions; however, hypomethylation may be an infrequent epigenetic alteration in SSAs. These results imply that *IGF2* DMR0 hypomethylation may be a key epigenetic event that affects the progression of HPs. Our data also suggest that the hypomethylation of *IGF2* DMR0 and LINE-1 may play an important role in the progression of the TSA pathway.

COMMENTS

Background

The serrated pathway attracts considerable attention as an alternative colorectal cancer (CRC) pathway. Authors previously reported the association of *insulin-like growth factor 2 (IGF2)* differentially methylated region (DMR)0 hypomethylation with poor prognosis and its link to global DNA hypomethylation [long interspersed nucleotide element-1 (LINE-1) hypomethylation] in CRC; however, to date, there have been no studies describing its role in the serrated pathway.

Research frontiers

Sessile serrated adenoma (SSA) and traditional serrated adenoma (TSA) are premalignant lesions, but SSA is the principal serrated precursor of CRC. In particular, there are many clinicopathological and molecular similarities between SSA and microsatellite instability (MSI)-high CRC, for example, right-sided predilection, *MLH1* hypermethylation, and frequent *BRAF* mutation. Therefore, SSAs are hypothesized to develop in some cases to MSI-high CRCs with *BRAF* mutation in the proximal colon. In contrast, a definite precursor of TSA has not been established. In addition, the key carcinogenic mechanism involved in this TSA pathway remains largely unknown. To investigate the role of *IGF2* DMR0 hypomethylation in serrated lesions they examined *IGF2* DMR0 methylation levels as well as other molecular alterations.

Innovations and breakthroughs

This is the first report of an association between histopathological findings and *IGF2* DMR0 hypomethylation in serrated lesions. *IGF2* DMR0 hypomethylation was less frequently detected in SSAs than in hyperplastic polyps (HPs), TSAs, and non-serrated adenomas. They also found that *IGF2* DMR0 and LINE-1 hypomethylations in TSAs and non-serrated adenomas with high-grade dysplasia were more frequently detected in TSAs and non-serrated adenomas, suggesting that such hypomethylation may play an important role in the progression of those tumors. Thus, their finding of differential patterns of *IGF2* DMR0 hypomethylation in serrated lesions may be a clue for elucidating the progression of serrated lesions.

Applications

In the current study, authors found that the *IGF2* DMR0 methylation levels of SSAs were significantly higher compared with those of HPs (microvesicular HPs), TSAs, and non-serrated adenomas. They also showed that *IGF2* DMR0 hypomethylation was less frequently detected in SSAs compared with HPs, TSAs, and non-serrated adenomas. Therefore, their data challenge the common conception of discrete molecular features of SSAs vs other serrated lesions (TSAs and HPs) and may have a substantial impact on clinical and translational research, which has typically been performed with the dichotomous classification of SSAs.

Terminology

IGF2 DMR: *IGF2* expression is controlled by CpG-rich regions known as *IGF2* DMRs in CRC. In particular, *IGF2* DMR0 hypomethylation has been suggested as a surrogate-biomarker for *IGF2* loss of imprinting. LINE-1: Global DNA hypomethylation is associated with genomic instability, which leads to cancer. As the long interspersed nucleotide element-1 or L1 retrotransposon constitutes a substantial portion of the human genome, the level of LINE-1 methylation is regarded as a surrogate marker of global DNA methylation. Serrated pathway: The serrated neoplasia pathway has attracted considerable attention as an

alternative pathway of CRC development, and serrated lesions exhibit unique clinicopathological or molecular features. Of the serrated lesions, SSAs are hypothesized to develop in some cases to MSI-high CRCs with *BRAF* mutation in the proximal colon.

Peer review

The authors investigated the hypomethylations of *IGF2* DMR0 and LINE-1; MSI; and mutations of *KRAS*, *BRAF*, and *PIK3CA* in patients with serrated lesions and non-serrated adenomas. The results demonstrated that *IGF2* DMR0 hypomethylation can occur in the early stage of any histological types of serrated lesions; however, hypomethylation may be an infrequent epigenetic alteration in SSAs. The authors also revealed that the hypomethylation of *IGF2* DMR0 and LINE-1 may play an important role in the progression of the TSA pathway. This article may have a substantial impact on clinical and translational research in the progression of serrated lesions related to malignant transformation.

REFERENCES

- 1 **Guarinos C**, Sánchez-Fortún C, Rodríguez-Soler M, Alenda C, Payá A, Jover R. Serrated polyposis syndrome: molecular, pathological and clinical aspects. *World J Gastroenterol* 2012; **18**: 2452-2461 [PMID: 22654442 DOI: 10.3748/wjg.v18.i20.2452]
- 2 **Edelstein DL**, Axilbund JE, Hyland LM, Romans K, Griffin CA, Cruz-Correa M, Giardiello FM. Serrated polyposis: rapid and relentless development of colorectal neoplasia. *Gut* 2013; **62**: 404-408 [PMID: 22490521 DOI: 10.1136/gutjnl-2011-300514]
- 3 **Spring KJ**, Zhao ZZ, Karamatic R, Walsh MD, Whitehall VL, Pike T, Simms LA, Young J, James M, Montgomery BW, Appleyard M, Hewett D, Togashi K, Jass JR, Leggett BA. High prevalence of sessile serrated adenomas with *BRAF* mutations: a prospective study of patients undergoing colonoscopy. *Gastroenterology* 2006; **131**: 1400-1407 [PMID: 17101316 DOI: 10.1053/j.gastro.2006.08.038]
- 4 **Carr NJ**, Mahajan H, Tan KL, Hawkins NJ, Ward RL. Serrated and non-serrated polyps of the colorectum: their prevalence in an unselected case series and correlation of *BRAF* mutation analysis with the diagnosis of sessile serrated adenoma. *J Clin Pathol* 2009; **62**: 516-518 [PMID: 19126563 DOI: 10.1136/jcp.2008.061960]
- 5 **Yachida S**, Mudali S, Martin SA, Montgomery EA, Iacobuzio-Donahue CA. Beta-catenin nuclear labeling is a common feature of sessile serrated adenomas and correlates with early neoplastic progression after *BRAF* activation. *Am J Surg Pathol* 2009; **33**: 1823-1832 [PMID: 19745699 DOI: 10.1097/PAS.0b013e3181b6da19]
- 6 **Kim KM**, Lee EJ, Kim YH, Chang DK, Odze RD. *KRAS* mutations in traditional serrated adenomas from Korea herald an aggressive phenotype. *Am J Surg Pathol* 2010; **34**: 667-675 [PMID: 20305537 DOI: 10.1097/PAS.0b013e3181d40cb2]
- 7 **Fujita K**, Yamamoto H, Matsumoto T, Hirahashi M, Gushima M, Kishimoto J, Nishiyama K, Taguchi T, Yao T, Oda Y. Sessile serrated adenoma with early neoplastic progression: a clinicopathologic and molecular study. *Am J Surg Pathol* 2011; **35**: 295-304 [PMID: 21263251 DOI: 10.1097/PAS.0b013e318205df36]
- 8 **Fu B**, Yachida S, Morgan R, Zhong Y, Montgomery EA, Iacobuzio-Donahue CA. Clinicopathologic and genetic characterization of traditional serrated adenomas of the colon. *Am J Clin Pathol* 2012; **138**: 356-366 [PMID: 22912351 DOI: 10.1309/AJCPVT7LC4CRPZSK]
- 9 **Mohammadi M**, Kristensen MH, Nielsen HJ, Bonde JH, Holck S. Qualities of sessile serrated adenoma/polyp/lesion and its borderline variant in the context of synchronous colorectal carcinoma. *J Clin Pathol* 2012; **65**: 924-927 [PMID: 22782936 DOI: 10.1136/jclinpath-2012-200803]
- 10 **Rosty C**, Buchanan DD, Walsh MD, Pearson SA, Pavluk E, Walters RJ, Clendenning M, Spring KJ, Jenkins MA, Win AK, Hopper JL, Sweet K, Frankel WL, Aronson M, Gallinger

- S, Goldblatt J, Woodall S, Arnold J, Walker NI, Jass JR, Parry S, Young JP. Phenotype and polyp landscape in serrated polyposis syndrome: a series of 100 patients from genetics clinics. *Am J Surg Pathol* 2012; **36**: 876-882 [PMID: 22510757 DOI: 10.1097/PAS.0b013e31824e133f]
- 11 **Kaji E**, Uraoka T, Kato J, Hiraoka S, Suzuki H, Akita M, Saito S, Tanaka T, Ohara N, Yamamoto K. Externalization of saw-tooth architecture in small serrated polyps implies the presence of methylation of IGF2. *Dig Dis Sci* 2012; **57**: 1261-1270 [PMID: 22173745 DOI: 10.1007/s10620-011-2008-0]
 - 12 **Hiraoka S**, Kato J, Fujiki S, Kaji E, Morikawa T, Murakami T, Nawa T, Kuriyama M, Uraoka T, Ohara N, Yamamoto K. The presence of large serrated polyps increases risk for colorectal cancer. *Gastroenterology* 2010; **139**: 1503-1510, 1510.e1-3 [PMID: 20643134 DOI: 10.1053/j.gastro.2010.07.011]
 - 13 **Burnett-Hartman AN**, Newcomb PA, Phipps AI, Passarelli MN, Grady WM, Upton MP, Zhu LC, Potter JD. Colorectal endoscopy, advanced adenomas, and sessile serrated polyps: implications for proximal colon cancer. *Am J Gastroenterol* 2012; **107**: 1213-1219 [PMID: 22688851 DOI: 10.1038/ajg.2012.167]
 - 14 **Nosho K**, Kure S, Irahara N, Shima K, Baba Y, Spiegelman D, Meyerhardt JA, Giovannucci EL, Fuchs CS, Ogino S. A prospective cohort study shows unique epigenetic, genetic, and prognostic features of synchronous colorectal cancers. *Gastroenterology* 2009; **137**: 1609-1620.e1-3 [PMID: 19686742 DOI: 10.1053/j.gastro.2009.08.002]
 - 15 **Rex DK**, Ahnen DJ, Baron JA, Batts KP, Burke CA, Burt RW, Goldblum JR, Guillem JG, Kahi CJ, Kalady MF, O'Brien MJ, Odze RD, Ogino S, Parry S, Snover DC, Torlakovic EE, Wise PE, Young J, Church J. Serrated lesions of the colorectum: review and recommendations from an expert panel. *Am J Gastroenterol* 2012; **107**: 1315-1329; quiz 1314, 1330 [PMID: 22710576 DOI: 10.1038/ajg.2012.161]
 - 16 **Burnett-Hartman AN**, Newcomb PA, Potter JD, Passarelli MN, Phipps AI, Wurscher MA, Grady WM, Zhu LC, Upton MP, Makar KW. Genomic aberrations occurring in subsets of serrated colorectal lesions but not conventional adenomas. *Cancer Res* 2013; **73**: 2863-2872 [PMID: 23539450 DOI: 10.1158/0008-5472.CAN-12-3462]
 - 17 **Patil DT**, Shadrach BL, Rybicki LA, Leach BH, Pai RK. Proximal colon cancers and the serrated pathway: a systematic analysis of precursor histology and BRAF mutation status. *Mod Pathol* 2012; **25**: 1423-1431 [PMID: 22684223 DOI: 10.1038/modpathol.2012.98]
 - 18 **Kriegl L**, Neumann J, Vieth M, Greten FR, Reu S, Jung A, Kirchner T. Up and downregulation of p16(Ink4a) expression in BRAF-mutated polyps/adenomas indicates a senescence barrier in the serrated route to colon cancer. *Mod Pathol* 2011; **24**: 1015-1022 [PMID: 21423154 DOI: 10.1038/modpathol.2011.43]
 - 19 **Mesteri I**, Bayer G, Meyer J, Capper D, Schoppmann SF, von Deimling A, Birner P. Improved molecular classification of serrated lesions of the colon by immunohistochemical detection of BRAF V600E. *Mod Pathol* 2014; **27**: 135-144 [PMID: 23887306 DOI: 10.1038/modpathol.2013.126]
 - 20 **Gaiser T**, Meinhardt S, Hirsch D, Killian JK, Gaedcke J, Jo P, Ponsa I, Miró R, Rüschoff J, Seitz G, Hu Y, Camps J, Ried T. Molecular patterns in the evolution of serrated lesion of the colorectum. *Int J Cancer* 2013; **132**: 1800-1810 [PMID: 23011871 DOI: 10.1002/ijc.27869]
 - 21 **Nosho K**, Igarashi H, Nojima M, Ito M, Maruyama R, Yoshii S, Naito T, Sukawa Y, Mikami M, Sumioka W, Yamamoto E, Kurokawa S, Adachi Y, Takahashi H, Okuda H, Kusumi T, Hosokawa M, Fujita M, Hasegawa T, Okita K, Hirata K, Suzuki H, Yamamoto H, Shinomura Y. Association of microRNA-31 with BRAF mutation, colorectal cancer survival and serrated pathway. *Carcinogenesis* 2014; **35**: 776-783 [PMID: 24242331]
 - 22 **Patai AV**, Molnár B, Tulassay Z, Sipos F. Serrated pathway: alternative route to colorectal cancer. *World J Gastroenterol* 2013; **19**: 607-615 [PMID: 23431044 DOI: 10.3748/wjg.v19.i5.607]
 - 23 **Rustagi T**, Rangasamy P, Myers M, Sanders M, Vaziri H, Wu GY, Birk JW, Protiva P, Anderson JC. Sessile serrated adenomas in the proximal colon are likely to be flat, large and occur in smokers. *World J Gastroenterol* 2013; **19**: 5271-5277 [PMID: 23983429 DOI: 10.3748/wjg.v19.i32.5271]
 - 24 **Bosman FT**, World Health Organization. International Agency for Research on Cancer. WHO classification of tumours of the digestive system. 4th ed. Lyon: International Agency for Research on Cancer, 2010
 - 25 **Leggett B**, Whitehall V. Role of the serrated pathway in colorectal cancer pathogenesis. *Gastroenterology* 2010; **138**: 2088-2100 [PMID: 20420948 DOI: 10.1053/j.gastro.2009.12.066]
 - 26 **Bettington M**, Walker N, Clouston A, Brown I, Leggett B, Whitehall V. The serrated pathway to colorectal carcinoma: current concepts and challenges. *Histopathology* 2013; **62**: 367-386 [PMID: 23339363 DOI: 10.1111/his.12055]
 - 27 **Goldstein NS**. Small colonic microsatellite unstable adenocarcinomas and high-grade epithelial dysplasias in sessile serrated adenoma polypectomy specimens: a study of eight cases. *Am J Clin Pathol* 2006; **125**: 132-145 [PMID: 16483002]
 - 28 **Rosty C**, Hewett DG, Brown IS, Leggett BA, Whitehall VL. Serrated polyps of the large intestine: current understanding of diagnosis, pathogenesis, and clinical management. *J Gastroenterol* 2013; **48**: 287-302 [PMID: 23208018 DOI: 10.1007/s00535-012-0720-y]
 - 29 **Conesa-Zamora P**, García-Solano J, García-García F, Turpin Mdel C, Trujillo-Santos J, Torres-Moreno D, Oviedo-Ramírez I, Carbonell-Muñoz R, Muñoz-Delgado E, Rodríguez-Braun E, Conesa A, Pérez-Guillermo M. Expression profiling shows differential molecular pathways and provides potential new diagnostic biomarkers for colorectal serrated adenocarcinoma. *Int J Cancer* 2013; **132**: 297-307 [PMID: 22696308 DOI: 10.1002/ijc.27674]
 - 30 **Whitehall VL**, Rickman C, Bond CE, Ramsnes I, Greco SA, Umapathy A, McKeone D, Faleiro RJ, Buttenshaw RL, Worthley DL, Nayler S, Zhao Z, Montgomery GW, Mallitt KA, Jass JR, Matsubara N, Notohara K, Ishii T, Leggett BA. Oncogenic PIK3CA mutations in colorectal cancers and polyps. *Int J Cancer* 2012; **131**: 813-820 [PMID: 21932420 DOI: 10.1002/ijc.26440]
 - 31 **Jass JR**, Baker K, Zlobec I, Higuchi T, Barker M, Buchanan D, Young J. Advanced colorectal polyps with the molecular and morphological features of serrated polyps and adenomas: concept of a 'fusion' pathway to colorectal cancer. *Histopathology* 2006; **49**: 121-131 [PMID: 16879389]
 - 32 **Kaneda A**, Wang CJ, Cheong R, Timp W, Onyango P, Wen B, Iacobuzio-Donahue CA, Ohlsson R, Andraos R, Pearson MA, Sharov AA, Longo DL, Ko MS, Levchenko A, Feinberg AP. Enhanced sensitivity to IGF-II signaling links loss of imprinting of IGF2 to increased cell proliferation and tumor risk. *Proc Natl Acad Sci USA* 2007; **104**: 20926-20931 [PMID: 18087038]
 - 33 **Sakatani T**, Kaneda A, Iacobuzio-Donahue CA, Carter MG, de Boom Witzel S, Okano H, Ko MS, Ohlsson R, Longo DL, Feinberg AP. Loss of imprinting of Igf2 alters intestinal maturation and tumorigenesis in mice. *Science* 2005; **307**: 1976-1978 [PMID: 15731405]
 - 34 **Bell AC**, Felsenfeld G. Methylation of a CTCF-dependent boundary controls imprinted expression of the Igf2 gene. *Nature* 2000; **405**: 482-485 [PMID: 10839546 DOI: 10.1038/35013100]
 - 35 **Hark AT**, Schoenherr CJ, Katz DJ, Ingram RS, Levorse JM, Tilghman SM. CTCF mediates methylation-sensitive enhancer-blocking activity at the H19/Igf2 locus. *Nature* 2000; **405**: 486-489 [PMID: 10839547 DOI: 10.1038/35013106]
 - 36 **Cui H**, Onyango P, Brandenburg S, Wu Y, Hsieh CL, Feinberg AP. Loss of imprinting in colorectal cancer linked to hypomethylation of H19 and IGF2. *Cancer Res* 2002; **62**: 6442-6446 [PMID: 12438232]
 - 37 **Ibrahim AE**, Arends MJ, Silva AL, Wyllie AH, Greger L, Ito Y, Vowler SL, Huang TH, Tavaré S, Murrell A, Brenton JD.

- Sequential DNA methylation changes are associated with DNMT3B overexpression in colorectal neoplastic progression. *Gut* 2011; **60**: 499-508 [PMID: 21068132 DOI: 10.1136/gut.2010.223602]
- 38 **Baba Y**, Noshio K, Shima K, Huttenhower C, Tanaka N, Hazra A, Giovannucci EL, Fuchs CS, Ogino S. Hypomethylation of the IGF2 DMR in colorectal tumors, detected by bisulfite pyrosequencing, is associated with poor prognosis. *Gastroenterology* 2010; **139**: 1855-1864 [PMID: 20682317 DOI: 10.1053/j.gastro.2010.07.050]
- 39 **McShane LM**, Altman DG, Sauerbrei W, Taube SE, Gion M, Clark GM. Reporting recommendations for tumor marker prognostic studies (REMARK). *J Natl Cancer Inst* 2005; **97**: 1180-1184 [PMID: 16106022 DOI: 10.1093/jnci/dji237]
- 40 **Liao X**, Morikawa T, Lochhead P, Imamura Y, Kuchiba A, Yamauchi M, Noshio K, Qian ZR, Nishihara R, Meyerhardt JA, Fuchs CS, Ogino S. Prognostic role of PIK3CA mutation in colorectal cancer: cohort study and literature review. *Clin Cancer Res* 2012; **18**: 2257-2268 [PMID: 22357840 DOI: 10.1158/1078-0432.CCR-11-24101078-0432.CCR-11-2410]
- 41 **Sukawa Y**, Yamamoto H, Noshio K, Kunimoto H, Suzuki H, Adachi Y, Nakazawa M, Nobuoka T, Kawayama M, Mikami M, Matsuno T, Hasegawa T, Hirata K, Imai K, Shinomura Y. Alterations in the human epidermal growth factor receptor 2-phosphatidylinositol 3-kinase-v-Akt pathway in gastric cancer. *World J Gastroenterol* 2012; **18**: 6577-6586 [PMID: 23236232 DOI: 10.3748/wjg.v18.i45.6577]
- 42 **Igarashi S**, Suzuki H, Niinuma T, Shimizu H, Nojima M, Iwaki H, Nobuoka T, Nishida T, Miyazaki Y, Takamaru H, Yamamoto E, Yamamoto H, Tokino T, Hasegawa T, Hirata K, Imai K, Toyota M, Shinomura Y. A novel correlation between LINE-1 hypomethylation and the malignancy of gastrointestinal stromal tumors. *Clin Cancer Res* 2010; **16**: 5114-5123 [PMID: 20978145 DOI: 10.1158/1078-0432.CCR-10-05811078-0432.CCR-10-0581]
- 43 **Iwagami S**, Baba Y, Watanabe M, Shigaki H, Miyake K, Ishimoto T, Iwatsuki M, Sakamaki K, Ohashi Y, Baba H. LINE-1 hypomethylation is associated with a poor prognosis among patients with curatively resected esophageal squamous cell carcinoma. *Ann Surg* 2013; **257**: 449-455 [PMID: 23023202 DOI: 10.1097/SLA.0b013e31826d8602]
- 44 **Torlakovic E**, Skovlund E, Snover DC, Torlakovic G, Nesland JM. Morphologic reappraisal of serrated colorectal polyps. *Am J Surg Pathol* 2003; **27**: 65-81 [PMID: 12502929]
- 45 **Ogino S**, Noshio K, Kirkner GJ, Kawasaki T, Chan AT, Schernhammer ES, Giovannucci EL, Fuchs CS. A cohort study of tumoral LINE-1 hypomethylation and prognosis in colon cancer. *J Natl Cancer Inst* 2008; **100**: 1734-1738 [PMID: 19033568 DOI: 10.1093/jnci/djn359]
- 46 **Baba Y**, Huttenhower C, Noshio K, Tanaka N, Shima K, Hazra A, Schernhammer ES, Hunter DJ, Giovannucci EL, Fuchs CS, Ogino S. Epigenomic diversity of colorectal cancer indicated by LINE-1 methylation in a database of 869 tumors. *Mol Cancer* 2010; **9**: 125 [PMID: 20507599]
- 47 **Antelo M**, Balaguer F, Shia J, Shen Y, Hur K, Moreira L, Cuatrecasas M, Bujanda L, Giraldez MD, Takahashi M, Cabanne A, Barugel ME, Arnold M, Roca EL, Andreu M, Castellvi-Bel S, Llor X, Jover R, Castells A, Boland CR, Goel A. A high degree of LINE-1 hypomethylation is a unique feature of early-onset colorectal cancer. *PLoS One* 2012; **7**: e45357 [PMID: 23049789 DOI: 10.1371/journal.pone.0045357]
- 48 **Hur K**, Cejas P, Feliu J, Moreno-Rubio J, Burgos E, Boland CR, Goel A. Hypomethylation of long interspersed nuclear element-1 (LINE-1) leads to activation of proto-oncogenes in human colorectal cancer metastasis. *Gut* 2014; **63**: 635-646 [PMID: 23704319 DOI: 10.1136/gutjnl-2012-304219]
- 49 **Benard A**, van de Velde CJ, Lessard L, Putter H, Takeshima L, Kuppen PJ, Hoon DS. Epigenetic status of LINE-1 predicts clinical outcome in early-stage rectal cancer. *Br J Cancer* 2013; **109**: 3073-3083 [PMID: 24220694 DOI: 10.1038/bjc.2013.654]
- 50 **Murata A**, Baba Y, Watanabe M, Shigaki H, Miyake K, Ishimoto T, Iwatsuki M, Iwagami S, Sakamoto Y, Miyamoto Y, Yoshida N, Noshio K, Baba H. Methylation levels of LINE-1 in primary lesion and matched metastatic lesions of colorectal cancer. *Br J Cancer* 2013; **109**: 408-415 [PMID: 23764749 DOI: 10.1038/bjc.2013.289]
- 51 **Ogino S**, Nishihara R, Lochhead P, Imamura Y, Kuchiba A, Morikawa T, Yamauchi M, Liao X, Qian ZR, Sun R, Sato K, Kirkner GJ, Wang M, Spiegelman D, Meyerhardt JA, Schernhammer ES, Chan AT, Giovannucci E, Fuchs CS. Prospective study of family history and colorectal cancer risk by tumor LINE-1 methylation level. *J Natl Cancer Inst* 2013; **105**: 130-140 [PMID: 23175808 DOI: 10.1093/jnci/djs482]
- 52 **Cunningham JM**, Christensen ER, Tester DJ, Kim CY, Roche PC, Burgart LJ, Thibodeau SN. Hypermethylation of the hMLH1 promoter in colon cancer with microsatellite instability. *Cancer Res* 1998; **58**: 3455-3460 [PMID: 9699680]
- 53 **Sheridan TB**, Fenton H, Lewin MR, Burkart AL, Iacobuzio-Donahue CA, Frankel WL, Montgomery E. Sessile serrated adenomas with low- and high-grade dysplasia and early carcinomas: an immunohistochemical study of serrated lesions "caught in the act". *Am J Clin Pathol* 2006; **126**: 564-571 [PMID: 16938659]
- 54 **Yang S**, Farraye FA, Mack C, Posnik O, O'Brien MJ. BRAF and KRAS Mutations in hyperplastic polyps and serrated adenomas of the colorectum: relationship to histology and CpG island methylation status. *Am J Surg Pathol* 2004; **28**: 1452-1459 [PMID: 15489648]
- 55 **Han Y**, Zhou ZY. Clinical features and molecular alterations of traditional serrated adenoma in sporadic colorectal carcinogenesis. *J Dig Dis* 2011; **12**: 193-198 [PMID: 21615873 DOI: 10.1111/j.1751-2980.2011.00495.x]

P- Reviewer: Pescatori M, Yoshimatsu K **S- Editor:** Gou SX
L- Editor: A **E- Editor:** Ma S





Published by **Baishideng Publishing Group Inc**

8226 Regency Drive, Pleasanton, CA 94588, USA

Telephone: +1-925-223-8242

Fax: +1-925-223-8243

E-mail: bpgoffice@wjgnet.com

Help Desk: <http://www.wjgnet.com/esps/helpdesk.aspx>

<http://www.wjgnet.com>



ISSN 1007-9327

