

VOLUME 289 (2014) PAGES 133–142
 DOI 10.1074/jbc.A113.533240

Prolonged insulin stimulation down-regulates GLUT4 through oxidative stress-mediated retromer inhibition by a protein kinase CK2-dependent mechanism in 3T3-L1 adipocytes.

Jinhui Ma, Yuko Nakagawa, Itaru Kojima, and Hiroshi Shibata

Several figures were not prepared in accordance with JBC policies. Specifically, groupings of immunoblot images from different parts of the same gel were not made explicit in the following figures: Fig. 1A (GLUT4), Fig. 2D (sortilin and TfR), Fig. 3A (GLUT4, VAMP-2, and sortilin), Fig. 5B (all images), Fig. 5C (LDM), Fig. 5D (GLUT4), Fig. 6C (GLUT4 and right tubulin), Fig. 6E (sortilin and Vps35), and Fig. 6F (GLUT4).

White lines have been added to indicate where the blot images were joined. This correction does not affect the interpretation or conclusions of this work.

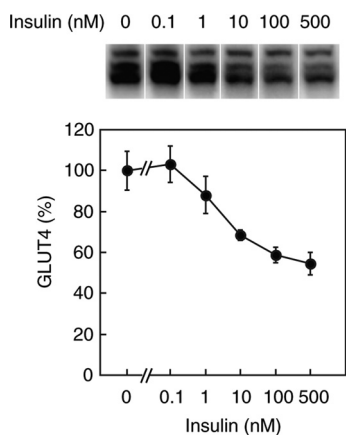


Figure 1A

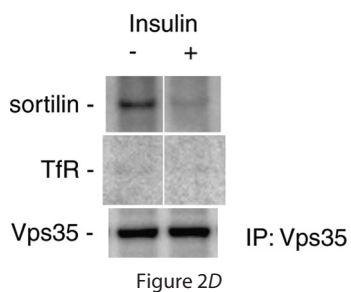


Figure 2D

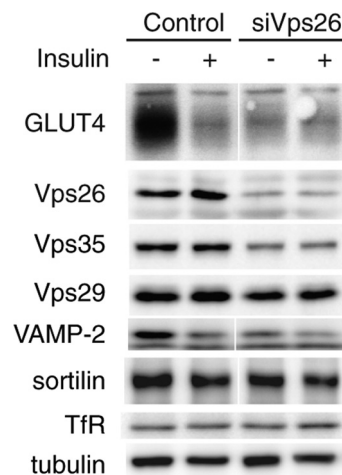


Figure 3A

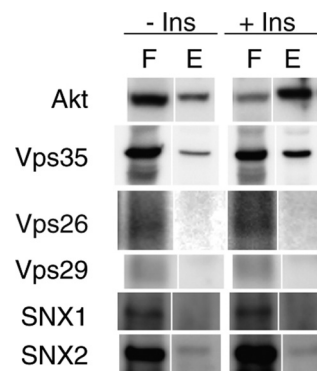


Figure 5B

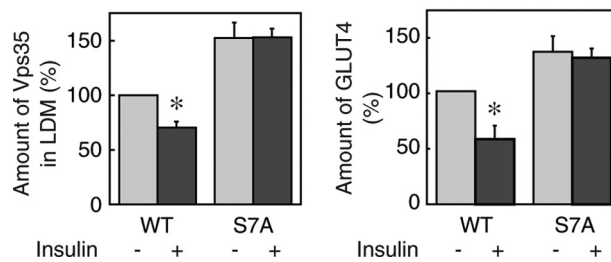
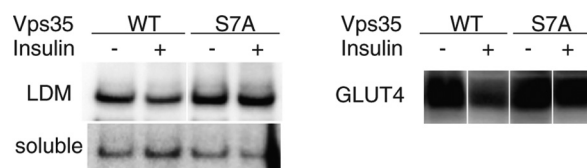


Figure 5, C and D

Authors are urged to introduce these corrections into any reprints they distribute. Secondary (abstract) services are urged to carry notice of these corrections as prominently as they carried the original abstracts.

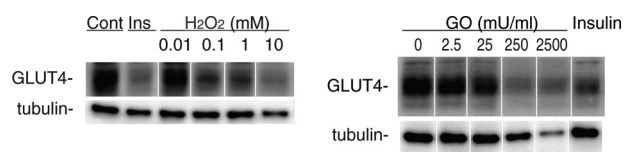
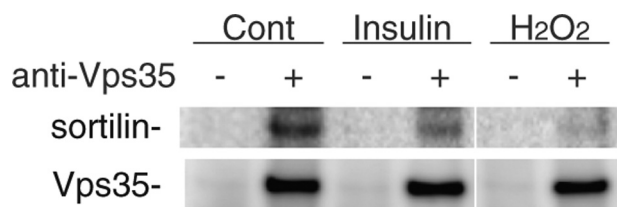


Figure 6C



IP: Vps35

Figure 6E

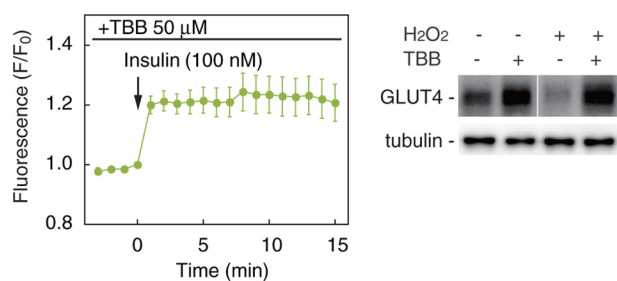


Figure 6F