

Synergistic Inhibitory Effect of Berberine and *d*-Limonene on Human Gastric Carcinoma Cell Line MGC803

Xiu-Zhen Zhang,^{1,*} Ling Wang,^{1,2,*} Dong-Wu Liu,³ Guang-Yan Tang,⁴ and Hong-Yu Zhang⁴

¹School of Life Sciences, Shandong University of Technology, Zibo, China.

²Shanghai OE Biotech. Co., Ltd., Shanghai, China.

³Analysis and Testing Center, Shandong University of Technology, Zibo, China.

⁴College of Life Science and Technology, Huazhong Agricultural University, Wuhan, China.

ABSTRACT This study aims at evaluating the anticancer effects of berberine hydrochloride (berberine) and *d*-limonene, alone and in combination, on human gastric carcinoma cell line MGC803 to determine whether berberine and *d*-limonene work synergistically and elucidate their mechanisms. MGC803 cells were treated with berberine and *d*-limonene, alone and in combination, for 24–48 h. The inhibitory effects of these drugs on growth were determined by MTT assay. The combination index and drug reduction index were calculated with the Chou–Talalay method based on the median-effect principle. Flow cytometry and laser scanning confocal microscopy were employed to evaluate the effects of both drugs on cell-cycle perturbation and apoptosis, generation of reactive oxygen species (ROS), mitochondrial membrane potential, and expression of Bcl-2 and caspase-3 in MGC803 cells. Berberine or *d*-limonene alone can inhibit the growth of MGC803 cells in a dose- and time-dependent manner. Berberine and *d*-limonene at a combination ratio of 1:4 exhibited a synergistic effect on anti-MGC803 cells. The two drugs distinctly induced intracellular ROS generation, reduced the mitochondrial transmembrane potential ($\Delta\Psi_m$), enhanced the expression of caspase-3, and decreased the expression of Bcl-2. The combination of berberine and *d*-limonene showed more remarkable effects compared with drugs used singly in MGC803 cells. The combination of berberine and *d*-limonene exerted synergistic anticancer effects on MGC803 cells by cell-cycle arrest, ROS production, and apoptosis induction through the mitochondria-mediated intrinsic pathway.

KEY WORDS: • anticancer • apoptosis • berberine • *d*-limonene • synergistic effect

INTRODUCTION

CANCER DEVELOPMENT INVOLVES multiple factors and genes. Combination therapy using multiple drugs is a common practice in the treatment of cancer to achieve higher efficacy and potency, with reduced toxicity. However, considering the explosive increase of drug combination quantities, selection of the appropriate drugs to be combined remains a great challenge.^{1,2} Fortunately, traditional Chinese medicine (TCM), which features the combinational use of herbs and has accumulated more than 100,000 formulae in the past 3000 years, provides important clues for identifying and developing synergistic drugs.^{3,4} A large number of TCM formulae contain Western drugs, and some components of Western drugs are structurally similar to TCM components. For instance, the Zuojinwan formula, containing *Coptidis*

rhizoma and *Evodia rutaecarpa* and recorded in the book *Danxixinfu*, has been used for the treatment of gastric conditions for more than 700 years. The combined extracts of these herbs have been suggested to exhibit antitumor effects on rat subjects.⁵ Twelve and 45 components have been identified in *C. rhizoma* and *E. rutaecarpa*, respectively, through the TCM Database. Some Western counterparts (with structural similarity >85%) were obtained by structural comparison from the Comprehensive Medicinal Chemistry (CMC) database. Some of the obtained CMC drugs are annotated as antineoplastic (limonene), or related to antitumor treatments (berberine and others). Berberine, a component of *C. rhizoma*, has recently drawn a great deal of attention because of its antineoplastic and antitumor effects on numerous cancer cell lines. The underlying mechanisms of berberine involve cell-cycle arrest, apoptosis induction, and anti-inflammation.⁶ *d*-Limonene, a component of *E. rutaecarpa*, has been found to inhibit the growth of various cancer cells without toxicity by apoptosis induction and reactive oxygen species (ROS) generation,⁷ and has chemopreventive and chemotherapeutic activities against rodent mammary, liver, and pancreatic tumors.^{8–10} Thus, the

*These authors contributed equally to this work.

Manuscript received 18 June 2013. Revision accepted 25 April 2014.

Address correspondence to: Xiu-Zhen Zhang, PhD, School of Life Sciences, Shandong University of Technology, 12 Zhangzhou Road, Zibo 255049, Shandong, China. E-mail: sleevez@sdut.edu.cn

evaluation of the anticancer effects of the combination of berberine and *d*-limonene would provide interesting results.

In the current study, we have evaluated the *in vitro* anti-tumor potential of berberine combined with *d*-limonene in MGC803 cells, with special emphasis on the mitochondrial pathway of apoptosis. We have also provided data to support our hypothesis that a combination treatment has greater antiproliferative and pro-apoptotic activities *in vitro*.

MATERIALS AND METHODS

Cells and reagents

The human gastric carcinoma cell line MGC803 was purchased from China Center for Type Culture Collection. The cells were grown in RPMI-1640 medium (Gibco) supplemented with 10% newborn bovine serum in a humidified 5% CO₂ incubator at 37°C. Berberine (purity ≥99%) was purchased from Shenzhen Medherb Biotechnology Co., Ltd., whereas *d*-limonene and cisplatin (purity ≥97%) were obtained from Sigma-Aldrich Co.

Cell viability assay

Cell viability was determined by 3-(4, 5-dimethylthiazol-2-yl)-2, 5-diphenyltetrazolium bromide (MTT) assay (Sigma-Aldrich Co).¹¹ The cells were seeded onto 96-well plates (1 × 10⁵ cell/mL) at 100 μL/well, and then incubated overnight. The cells were treated with berberine and *d*-limonene, alone and in combination, for 24 and 48 h. Cisplatin was used as a positive control. Approximately 20 μL of the 5 mg/mL MTT solution was added to each well, and the plates were then incubated again for 4 h at 37°C. Subsequently, the media were removed, and 200 μL of dissolved solution (containing 10% sodium dodecyl sulfate, 5% isobutanol, and 0.012 M HCl) was added to each well. Absorbance at 570 nm was detected using a Thermo Multiskan MK3 (Thermo Fisher), with 630 nm as a reference wavelength. All samples were tested in six replicates, and the experiments were repeated at least thrice.

Synergy determination

The interaction between berberine and *d*-limonene was analyzed according the median-effect principle proposed by Chou and Talalay.^{12,13} The median effect equation is expressed as follows:

$$\frac{fa}{fu} = \left(\frac{D}{D_m} \right)^m \quad (1)$$

where D is the dose, fa and fu are the fractions affected and unaffected by the dose D, respectively, D_m is the dose that produces the median effect (inhibition by 50%), and m represents the shape of the dose-effect curve. Considering the logarithmic form of Equation (1), we derived the following equation:

$$\log \left(\frac{fa}{fu} \right) = \log \left(\frac{D}{D_m} \right)^m = m \log(D) - m \log(D_m) \quad (2)$$

Equation (2) enables the calculation of m, D_m, and D (the dose required by a given effect produced by berberine and *d*-limonene alone or in combination). According to Chou and Talalay's method,¹² the combination index (CI) between berberine and *d*-limonene can be valued by the following equation:

$$CI = \frac{D_{berberine}}{(D_x)_{berberine}} + \frac{D_{limonene}}{(D_x)_{limonene}} \quad (3)$$

$$D_x = D_m \left(\frac{fa}{fu} \right)^{1/m} \quad (4)$$

where CI smaller than 1, equal to 1, and greater than 1 indicates synergism, additive effect, and antagonism, respectively. (D_x)_{berberine} and (D_x)_{limonene} are the doses of berberine alone and *d*-limonene alone, providing x% growth inhibition, and D_{berberine} and D_{limonene} are the concentrations of the combination of the two drugs with the same efficacy (x% inhibition). D_x can be calculated using Equation (4).

Chou used the dose-reduction index (DRI) to measure the number of reduction folds that may be produced in the dose by the synergistic combination of the two drugs at a given effect level compared with the doses of each drug alone.¹³ The DRI of berberine and *d*-limonene can be calculated using the following equations:

$$DRI_{berberine} = \frac{(D_x)_{berberine}}{D_{berberine}} \quad (5)$$

$$DRI_{limonene} = \frac{(D_x)_{limonene}}{D_{limonene}} \quad (6)$$

Nuclear morphology

MGC803 cells (1 × 10⁵/mL) were seeded on cover slips and cultured with 20 μM of berberine or 80 μM of *d*-limonene, alone and in combination, for 48 h, using 20 μM of casplatin as a positive control. The cells were then washed with phosphate-buffered saline (PBS), fixed in 95% ethanol for 5 min, and stained with 0.01% acridine orange (AO) for 5 min. Nuclear morphology of apoptotic cells with condense/fragmented nuclei was observed under a fluorescent microscope.

Cell cycle and cell apoptosis by flow cytometry

Cell cycle and apoptosis analyses were performed by flow cytometry. The cells were seeded onto six-well plates and cultured with and without berberine and *d*-limonene for 24, 36, and 48 h. After the treatment, the floating and the attached cells in the medium were collected. The cells were then washed with cold PBS and fixed with 70% ethanol at 4°C overnight. Afterward, the cells were incubated with RNAase (100 μL, 5 mg/mL) for 30 min at 37°C, and stained with propidium iodide (100 μg/mL) for 30 min in the dark. Finally, the cells were analyzed by a FACSCalibur flow cytometer with the CellQuest and Modifit software (Becton Dickinson).

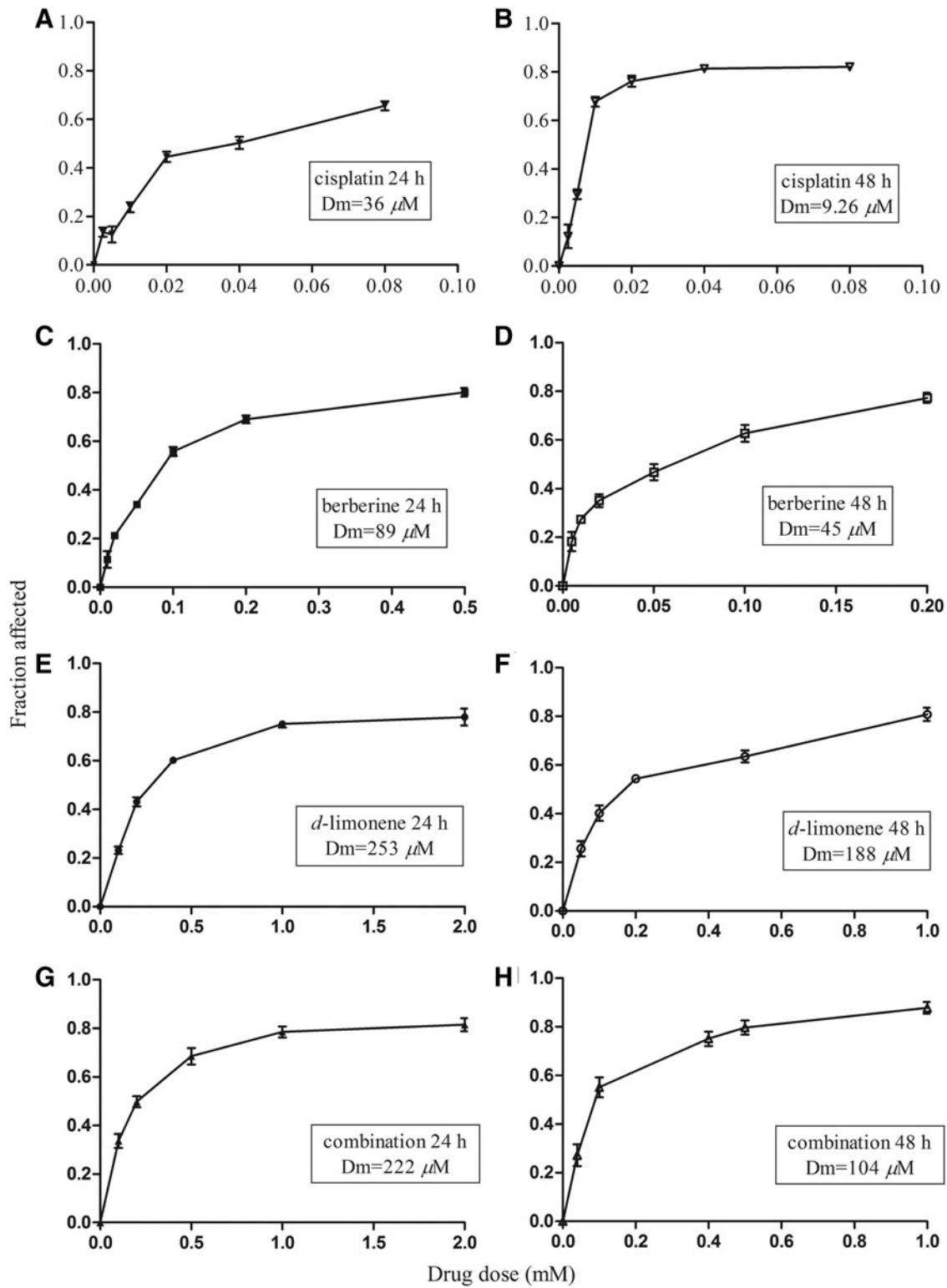


FIG. 1. Cytotoxicity of berberine and *d*-limonene, alone and in combination, on the growth of MGC803 cells. MGC803 cells were treated with berberine (C, D) and *d*-limonene (E, F), alone and in combination (G, H), at 1: 4, for 24 (C, E, G) and 48 h (D, F, H), with cisplatin (A for 24 h, B for 48 h) as a positive control. The viability of cells was qualified by MTT assay, reported as fraction affected (fraction of cells affected by treatment), and data represent the mean \pm SD from three replicate wells. $P < .01$, compared with the control group.

Determination of ROS generation

The oxidation-sensitive fluorescent probe 2',7'-dichlorofluorescein diacetate (DCFH-DA) was used to assess the generation of intracellular ROS. Briefly, the cells (1×10^5 /mL) were seeded on cover slips and cultured with 20 μ M of berberine or 80 μ M of *d*-limonene, alone and in combination, for 24 and 48 h. The cells were then washed with PBS and incubated with DCFH-DA (100 μ L, 10 μ M) for 50 min in the dark. DCFH-DA was deacetylated and became non-fluorescent DCFH after being collected by the cells. DCFH can be converted to green fluorescent DCF by intracellular ROS. The fluorescent images were recorded by a confocal microscope (Leica TCS SP2) with 100 \times objective and excitation and emission settings of 488 and 530 nm, respectively. The fluorescence intensity (FI) of 50 cells from each sample was quantified with the Leica software and Image J software.

Determination of mitochondrial transmembrane potential

The changes in the mitochondrial membrane potential were measured with rhodamine 123 (Rh 123) by confocal scanning microscopy.¹⁴ The cells (1×10^5 /mL) were seeded on cover slips and cultured with 20 μ M of berberine or 80 μ M of *d*-limonene, alone and in combination, for 24 and 48 h. The cells were then washed with PBS and incubated with Rh 123 (100 μ L, 10 μ M) for 30 min at 37°C. The fluorescent images were recorded by a confocal microscope (Leica TCS SP2) with 100 \times objective and excitation and emission settings of 505 and 520 nm, respectively. The FI of 50 cells from each sample was quantified with the Leica software and Image J software.

Immunofluorescence

The cells (1×10^5 /mL) were seeded on cover slips and cultured with 20 μ M of berberine or 80 μ M of *d*-limonene, alone and in combination, for 24 and 48 h. After the treatment, the cells were washed with PBS and fixed with paraformaldehyde for 30 min. The fixed cells were permeabilized with 0.1% Triton X-100 in PBS and incubated with anti-Bcl-2 (1:200) and anti-Caspase-3 antibody (1:100) (Santa Cruz Biotechnology) at 4°C overnight. The proteins were then visualized on a confocal microscope after incubation, with fluorescein isothiocyanate (FITC)-conjugated secondary anti-mouse IgG antibody (Santa Cruz Biotechnology). The FI of 50 cells from each sample was quantified with the Leica software and Image J software.

Statistical analysis

All data are presented as means \pm standard deviation from more than three independent experiments. R 2.10.1 was used to analyze the data, and $P < .05$ was considered statistically significant.

RESULTS

Cytotoxicity assay

The dose-effect relationship of berberine and *d*-limonene, alone and in combination, was determined on the growth of MGC803 cells after exposure for 24 and 48 h (Fig. 1). The median-effect analysis was carried out according to Chou's method.¹³

Berberine showed dose-dependent cytotoxic effects in MGC803 cells, with Dm (IC₅₀) values of 89 μ M at 24 h and

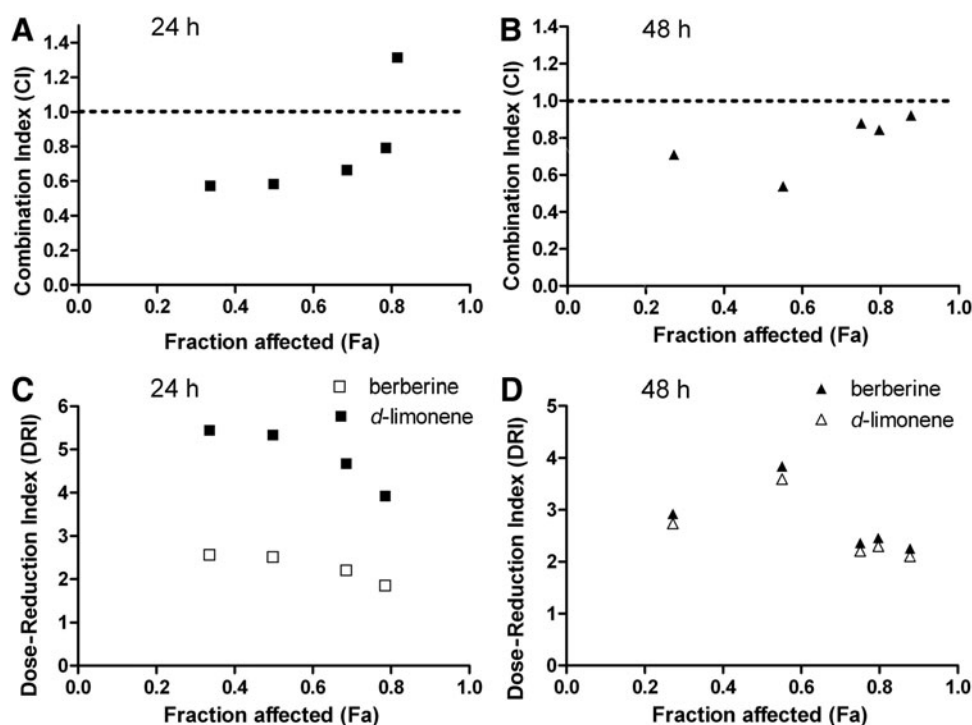


FIG. 2. Synergistic anticancer effect of the combination of berberine and *d*-limonene in MGC803 cells. The combination index (CI) (A, B) and dose-reduction index (DRI) (C, D) of the combination of berberine and *d*-limonene were calculated as described. The data points below CI values of 1, denoted by horizontal dotted lines in (A) and (B), are indicative of synergistic effects.

TABLE 1. CELL-CYCLE DISTRIBUTION INDUCED BY BERBERINE AND *d*-LIMONENE ALONE AND IN COMBINATION IN MGC803 CELLS

Treatment	Time (h)	Cell cycle (%)		
		G ₀ /G ₁	S	G ₂ /M
Untreated control	0	41.64 ± 2.25	32.38 ± 1.18	25.98 ± 3.43
Berberine	24	48.61 ± 0.91 ^a	28.3 ± 1.48 ^a	23.09 ± 2.40
	36	47.69 ± 0.92 ^a	27.77 ± 1.38 ^a	24.54 ± 2.31
	48	46.49 ± 2.34 ^a	27.88 ± 0.27 ^a	25.63 ± 2.22
<i>d</i> -Limonene	24	46.71 ± 0.70 ^a	27.22 ± 0.11 ^a	26.07 ± 0.81
	36	35.95 ± 4.44 ^a	27.92 ± 3.09 ^a	33.13 ± 2.88 ^a
	48	58.81 ± 4.15 ^a	12.84 ± 0.78 ^a	28.36 ± 3.36 ^a
Berberine + <i>d</i> -limonene	24	66.58 ± 0.92 ^{abc}	25.94 ± 2.37 ^a	8.38 ± 1.53 ^{abc}
	36	49.96 ± 1.36 ^{ac}	0 ^{abc}	50.04 ± 1.36 ^{abc}
	48	62.19 ± 1.49 ^{ab}	0.11 ± 0.19 ^{abc}	37.7 ± 1.31 ^{abc}

^aSignificantly different compared with the control group.

^bSignificantly different compared with berberine group.

^cSignificantly different compared with *d*-limonene group, $P < .05$.

45 μ M at 48 h, and good r values of 0.995 and 0.988, respectively ($P < .01$). Similarly, *d*-limonene also showed dose-dependent cytotoxic effects in MGC803 cells, with Dm (IC₅₀) values of 253 μ M at 24 h and 182 μ M at 48 h, and good r values of 0.990 and 0.988, respectively ($P < .01$). The r value is the linear correlation coefficient of the median-effect plot and usually larger than 0.95 *in vitro* experiments.¹³ Since the Chou–Talalay model requires drugs to be used at a fixed dose ratio such as the ratio of (IC₅₀)₁/(IC₅₀)₂, we chose to use berberine and *d*-limonene at a fixed ratio (1:4) based on the ratio of their IC₅₀ values at 48h. CIs were calculated to determine the antitumor effects of the combinations; the plots of CI versus fraction affected (Fa) are shown in Figure 2A and B. The combination of berberine and *d*-limonene exhibited a synergistic effect at 33–80 inhibition levels, where the combination doses were 0.1–1.0 mM at 24 h. The combination of the two drugs produced an

antagonistic effect at a higher inhibition level, where the combination dose was 2.0 mM (CI=1.316). At 48 h, the combination treatment showed a synergistic effect when the combination dose was 40–100 μ M (CI < 1) and produced a nearly additive effect when the combination dose approached 200 μ M (CI=0.92). The DRI values were also estimated to determine the drug dose reduction in the combination compared with the drugs alone at the given inhibition level. As shown in Figure 2C and D, the DRI values of berberine ranged from 1.8 to 3.8, whereas those of *d*-limonene ranged from 2.1 to 5.4. The results of the MTT assay suggested that both berberine and *d*-limonene can inhibit the growth of MGC803 cells. Berberine and *d*-limonene at the combination ratio of 1:4 exhibited a synergistic, cytotoxic effect in anti-MGC803 cells.

Effect of berberine and *d*-limonene on the cell-cycle control of MGC803 cells

We analyzed the cell-cycle distribution using the flow cytometry technique to investigate whether the drugs have a regulatory role in cell cycle. As shown in Table 1, the percentage of G₁ cells was higher in the MGC803 cells treated with berberine for 24, 36, and 48 h ($P < .05$) compared with the control. However, the combination of the drugs induced a remarkable accumulation of cells at the G₁ and G₂/M phases at 36 and 48 h; the number of cells at the S phase was distinctly inhibited ($P < .05$).

Induction of apoptosis in MGC803 cells by berberine and *d*-limonene

Nuclear morphology of apoptotic cells with condense/fragmented nuclei was shown in Figure 3 by AO staining. The apoptosis induced by berberine and *d*-limonene was determined through flow cytometry to further investigate the decreased viability of the MGC803 cells. Figure 3F shows that berberine and *d*-limonene alone can increase the proportion of apoptosis cells after treatment for 36 and 48 h ($P < .05$). Compared with the effect of berberine or

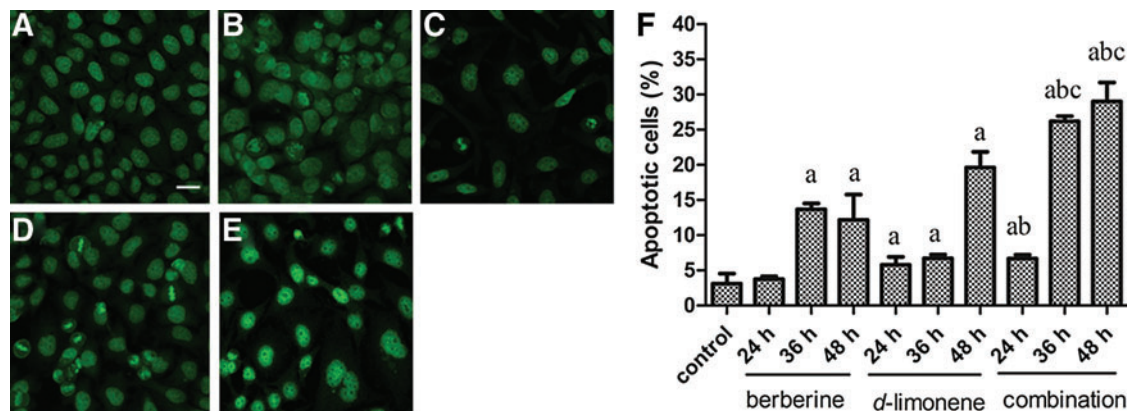


FIG. 3. Induction apoptosis of berberine and *d*-limonene, alone and in combination, in MGC803 cells. Morphological changes were shown by acridine orange after drug treatment for 48 h: (A) control, (B) 20 μ M cisplatin, (C) 20 μ M berberine, (D) 80 μ M *d*-limonene, and (E) 20 μ M berberine + 80 μ M *d*-limonene. The apoptosis induced by berberine and *d*-limonene at 24, 36, and 48 h was determined by flow cytometry (F). Data are mean \pm SD values. $P < .05$, ^asignificantly different compared with the control group; ^bsignificantly different compared with berberine group; ^csignificantly different compared with *d*-limonene group. The bar is 25 μ m. Color images available online at www.liebertpub.com/jmf

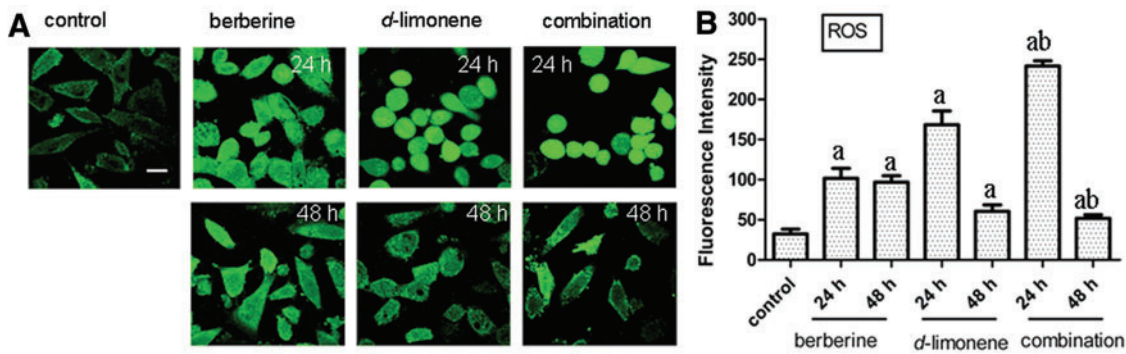


FIG. 4. Induction of intracellular reactive oxygen species (ROS) generation in MGC803 cells after treatment with berberine and *d*-limonene, alone and in combination, for 24 and 48 h. Monitoring of the ROS production with DCF (A) in MGC803 cells; fluorescence intensity (FI) was measured by laser scanning confocal microscopy. Data presented as mean \pm SD values of three independent experiments (B). $P < .05$, ^asignificantly different compared with the control group; ^bsignificantly different compared with the single drug treatments. The bar is 15 μ m. Color images available online at www.liebertpub.com/jmf

d-limonene alone, the apoptosis rate of the combination of the two compounds was much higher (29.03% vs. 12.2% or 19.6%, $P < .05$), indicating that the apoptotic effect was increased by the combination of the drugs.

Effect of berberine and d-limonene on intracellular ROS generation

We measured the intracellular ROS generation using the fluorescent probe DCFH-DA to investigate whether ROS is involved in mediating apoptosis induced by berberine and *d*-limonene. Treatment with each drug alone or in combination enhanced the ROS generation in MGC803 cells compared with the untreated cells ($P < .05$). The order of ROS generation at 24 h was combination (the mean FI = 241.70) > *d*-limonene (the mean FI = 168.44) > berberine (the mean FI = 101.62) > control (the mean FI = 32.34) (Fig. 4). Interestingly, the ROS generation at 48 h decreased compared with that at 24 h ($P < .05$), although both were remarkably higher than the control.

Effect of berberine and d-limonene on the mitochondrial transmembrane potential ($\Delta\Psi_m$)

The changes in $\Delta\Psi_m$ have been linked to apoptosis; thus, we examined the influence of berberine and *d*-limonene,

alone and in combination, on the $\Delta\Psi_m$ of the MGC803 cells with Rh 123. Rh 123 is a mitochondria-binding specific cationic fluorescent dye that is proportional to the $\Delta\Psi_m$. The result showed a remarkable loss of $\Delta\Psi_m$ when the MGC803 cells were exposed to berberine and *d*-limonene, alone or in combination, for 24 and 48 h, as revealed by the reduction of Rh 123 FI compared with the control ($P < .05$) (Fig. 5). The combination treatment showed a sharp decline of Rh 123 FI to 51.12 compared with the control (121.43), or berberine (78.22) and *d*-limonene (71.46) alone after treatment for 48 h.

Effect of berberine and d-limonene on the expression of Bcl-2

Bcl-2 is an inner mitochondrial membrane protein with an important role in preventing apoptosis. Thus, we examined the effect of berberine and *d*-limonene on Bcl-2 expression in the MGC803 cells. Compared with the control, the Bcl-2 protein expression decreased in a time-dependent manner in the MGC803 cells treated with berberine and *d*-limonene, alone and in combination, for 24 and 48 h ($P < .05$) (Fig. 6). The Bcl-2 expression in the cells treated with the combination of the drugs was lower than in those treated with the drugs alone ($P < .05$).

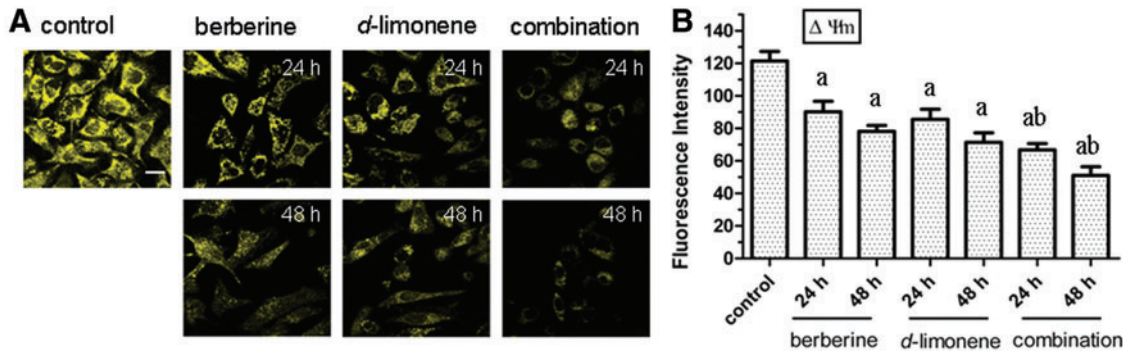


FIG. 5. Loss of mitochondrial membrane potential ($\Delta\Psi_m$) in MGC803 cells after treatment with berberine and *d*-limonene, alone and in combination, for 24 and 48 h. Detection of $\Delta\Psi_m$ changes with Rhodamine 123 (A) in MGC803 cells; FI was measured by laser scanning confocal microscopy. Data presented as mean \pm SD values of three independent experiments (B). $P < .05$, ^asignificantly different compared with the control group; ^bsignificantly different compared with the single drug treatments. The bar is 15 μ m. Color images available online at www.liebertpub.com/jmf

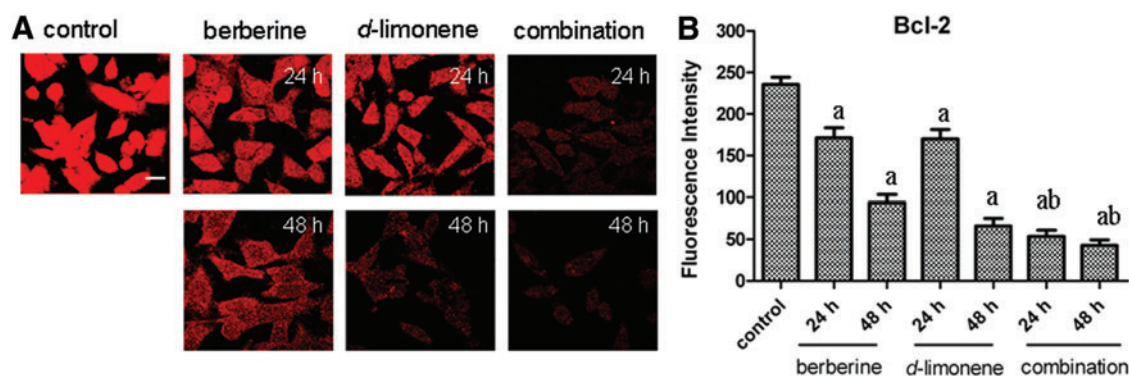


FIG. 6. The changes of Bcl-2 protein expression in MGC803 cells after treatment with berberine and *d*-limonene, alone and in combination, for 24 and 48 h. The expression of Bcl-2 in MGC803 cells was detected by the FITC-conjugated secondary antibody (A), and FI was measured by laser scanning confocal microscopy. Data presented as mean \pm SD values of three independent experiments (B). $P < .05$, ^asignificantly different compared with the control group; ^bsignificantly different compared with the single drug treatments. The bar is 15 μ m. Color images available online at www.liebertpub.com/jmf

Effect of berberine and *d*-limonene on the caspase-3 expression

Caspase-3 has been implicated as a key mediator of apoptosis, and it is required to trigger DNA fragmentation in apoptosis. The effect of berberine and *d*-limonene on the expression of caspase-3 was revealed through immunofluorescence (Fig. 7). After the incubation of the MGC803 cells with berberine and *d*-limonene, alone and in combination, for 24 and 48 h, the caspase-3 protein expression increased in a time-dependent manner compared with the control ($P < .05$). The caspase-3 expression in the cells treated with the combination of the drugs was higher than in those treated with the drugs alone ($P < .05$).

DISCUSSION

In this study, we demonstrated that berberine and *d*-limonene exhibit cytotoxic effects on human gastric carcinoma (MGC803) cells in a dose- and time-dependent manner. Berberine was more potent than *d*-limonene in inhibiting the growth of MGC803 cells. Furthermore, the combination of berberine (8–200 μ M) and *d*-limonene

(1:4 ratio) exerted significant synergistic, cytotoxic effects on MGC803 cells in a dose- and time-dependent manner.

Berberine has been shown to produce anti-tumor activities against a wide spectrum of cancer cells^{6,15} with a relatively low IC₅₀; for example, the IC₅₀ for human gastric carcinoma SNU-5 cells is 48 μ M.¹⁶ Our results showed that the IC₅₀ of berberine in human gastric carcinoma cells after 48 h is 45 μ M, consistent with previous reports. Berberine displays minimal toxicity in normal cells; it exhibits minimum toxicity in normal cells at 200 μ M.¹⁷ *d*-Limonene has chemopreventive and chemotherapeutic activities without toxicity in several kinds of rodent tumor subjects.¹⁸ Moreover, *d*-limonene can promote the antitumor activity of other reagents, such as 4-hydroxyandrostenedione and docetaxel, in the combination therapy.^{7,19} The results of this study showed that *d*-limonene sensitizes berberine-induced cytotoxicity in human gastric cancer cells and reduces the dose of berberine by twofold.

The combined beneficial effect can be achieved partly through cell-cycle arrest, ROS production, and apoptosis induction in the mitochondria-mediated intrinsic pathway.

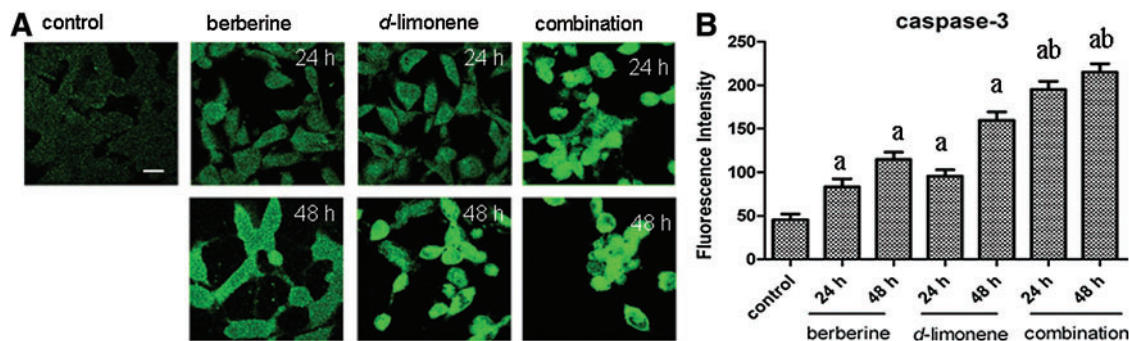


FIG. 7. The changes in caspase-3 protein expression in MGC803 cells after treatment with berberine and *d*-limonene, alone and in combination, for 24 and 48 h. The expression of caspase-3 (A) in MGC803 cells was detected by the FITC-conjugated secondary antibody, and FI was measured by laser scanning confocal microscopy. Data presented as mean \pm SD values of three independent experiments (B). $P < .05$, ^asignificantly different compared with the control group; ^bsignificantly different compared with the single drug treatments. The bar is 15 μ m. Color images available online at www.liebertpub.com/jmf

Mitochondria have been considered targets of anticancer drugs and have a key function in the regulation of apoptosis.²⁰

Berberine induces cell-cycle arrest at the G0/G1, G1, and/or G2/M phases in different cancer cells.⁶ Our results indicated that berberine caused G1 arrest in MGC803 cells, and that the combination of berberine and *d*-limonene led to an accumulation of cells in the G1 and G2/M phases at the expense of the S phase. These findings suggested that berberine and *d*-limonene may be useful for controlling cancer cell growth, because several cancer cells have defects in the cell-cycle checkpoints.

Mitochondria are the main production sites of ROS. The presence of excessive ROS in the mitochondria leads to the opening of the mitochondrial permeability transition pore, decline in $\Delta\Psi_m$, and release of cytochrome c, which, in turn, initiate caspase activation and trigger apoptosis.²¹ Several studies have provided evidence that berberine and *d*-limonene exhibit antitumor activity by ROS generation, caspase-3 activation, and apoptosis induction.^{7,22,23} Our results demonstrated that the incubation of MGC803 cells with berberine alone, *d*-limonene alone, and the combination of the two compounds increased the ROS generation, decreased $\Delta\Psi_m$, upregulated caspase-3 expression, downregulated the anti-apoptosis protein Bcl-2 expression, and induced the mitochondria-mediated apoptosis.

In conclusion, the findings presented in this study demonstrated, for the first time, that berberine and *d*-limonene synergistically inhibited the growth of MGC803 cells *in vitro*. This inhibition can be achieved partly by the generation of ROS and the induction of caspase-mediated apoptosis. Additional studies are needed to elucidate the mechanistic interactions of combinatorial drugs. Moreover, the idea of combining TCM active components should be given more focus, because it holds great potential in treating tumors with minimal side effects.

ACKNOWLEDGMENTS

This work was supported by grants from the National Natural Science Foundation of China (No. 31100987), Department of Education (No. 12JYC820084) Shandong University of Technology “4040-306018,” “4041-406022,” and projects for the development of young teachers.

AUTHOR DISCLOSURE STATEMENT

All the authors have no potential conflicts of interest to declare.

REFERENCES

- Morphy R, Kay C, Rankovic Z: From magic bullets to designed multiple ligands. *Drug Discov Today* 2004;9:641–651.
- Morphy R, Rankovic Z: Designed multiple ligands. An emerging drug discovery paradigm. *J Med Chem* 2005;48:6523–6543.
- Li XJ, Zhang HY: Synergy in natural medicines: implications for drug discovery. *Trends Pharmacol Sci* 2008;29:331–332.
- Wang L, Zhou GB, Liu P, *et al.*: Dissection of mechanisms of Chinese medicinal formula Realgar-Indigo naturalis as an effective treatment for promyelocytic leukemia. *Proc Natl Acad Sci USA* 2008;105:4826–4831.
- Qiu J: Traditional medicine: a culture in the balance. *Nature* 2007;448:126–128.
- Tang J, Feng Y, Tsao S, *et al.*: Berberine and *Coptidis rhizoma* as novel antineoplastic agents: a review of traditional use and biomedical investigations. *J Ethnopharmacol* 2009;126:5–17.
- Rabi T, Bishayee A: *d*-Limonene sensitizes docetaxel-induced cytotoxicity in human prostate cancer cells: generation of reactive oxygen species and induction of apoptosis. *J Carcinog* 2009;8:9.
- Elegbede JA, Elson CE, Qureshi A, *et al.*: Inhibition of DMBA-induced mammary cancer by the monoterpene *d*-limonene. *Carcinogenesis* 1984;5:661–664.
- Nakaizumi A, Baba M, Uehara H: *d*-Limonene inhibits N-nitrosobis(2-oxopropyl)amine induced hamster pancreatic carcinogenesis. *Cancer Lett* 1997;117:99–103.
- Kaji I, Tatsuta M, Iishi H, *et al.*: Inhibition by *d*-limonene of experimental hepatocarcinogenesis in Sprague-Dawley rats does not involve p21(ras) plasma membrane association. *Int J Cancer* 2001;93:441–444.
- Mosmann T: Rapid colorimetric assay for cellular growth and survival: application to proliferation and cytotoxicity assays. *J Immunol Methods* 1983;65:55–63.
- Chou TC, Talalay P: Quantitative analysis of dose-effect relationships: the combined effects of multiple drugs or enzyme inhibitors. *Adv Enzyme Regul* 1984;22:27–55.
- Chou TC: Theoretical basis, experimental design, and computerized simulation of synergism and antagonism in drug combination studies. *Pharmacol Rev* 2006;58:621–681.
- Scaduto RC Jr., Grotyohann LW: Measurement of mitochondrial membrane potential using fluorescent rhodamine derivatives. *Biophys J* 1999;76:469–477.
- Sun Y, Xun K, Wang Y, *et al.*: A systematic review of the anticancer properties of berberine, a natural product from Chinese herbs. *Anticancer Drugs* 2009;20:757–769.
- Lin JP, Yang JS, Lee JH, *et al.*: Berberine induces cell cycle arrest and apoptosis in human gastric carcinoma SNU-5 cell line. *World J Gastroenterol* 2006;12:21–28.
- Chidambara Murthy KN, Jayaprakasha GK, Patil BS: The natural alkaloid berberine targets multiple pathways to induce cell death in cultured human colon cancer cells. *Eur J Pharmacol* 2012;688:14–21.
- Crowell PL: Prevention and therapy of cancer by dietary monoterpenes. *J Nutr* 1999;129:775S–778S.
- Chander SK, Lansdown AG, Luqmani YA, *et al.*: Effectiveness of combined limonene and 4-hydroxyandrostenedione in the treatment of NMU-induced rat mammary tumours. *Br J Cancer* 1994;69:879–882.
- Hockenbery DM: Targeting mitochondria for cancer therapy. *Environ Mol Mutagen* 2010;51:476–489.
- Wang X: The expanding role of mitochondria in apoptosis. *Genes Dev* 2001;15:2922–2933.
- Meeran SM, Katiyar S, Katiyar SK: Berberine-induced apoptosis in human prostate cancer cells is initiated by reactive oxygen species generation. *Toxicol Appl Pharmacol* 2008;229:33–43.
- Inoue K, Kulsum U, Chowdhury SA, *et al.*: Tumor-specific cytotoxicity and apoptosis-inducing activity of berberines. *Anticancer Res* 2005;25:4053–4059.