

Z-Selective Olefin Metathesis on Peptides: Investigation of Side-Chain Influence, Preorganization, and Guidelines in Substrate Selection

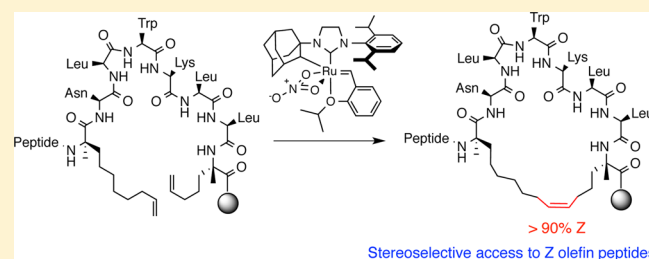
Shane L. Mangold,[†] Daniel J. O'Leary,^{*,‡} and Robert H. Grubbs^{*,†}

[†]Arnold and Mabel Beckman Laboratories for Chemical Synthesis, Division of Chemistry and Chemical Engineering, California Institute of Technology, Pasadena, California 91125, United States

[‡]Department of Chemistry, Pomona College, Claremont, California 91711, United States

S Supporting Information

ABSTRACT: Olefin metathesis has emerged as a promising strategy for modulating the stability and activity of biologically relevant compounds; however, the ability to control olefin geometry in the product remains a challenge. Recent advances in the design of cyclometalated ruthenium catalysts has led to new strategies for achieving such control with high fidelity and *Z* selectivity, but the scope and limitations of these catalysts on substrates bearing multiple functionalities, including peptides, remained unexplored. Herein, we report an assessment of various factors that contribute to both productive and nonproductive *Z*-selective metathesis on peptides. The influence of sterics, side-chain identity, and preorganization through peptide secondary structure are explored by homodimerization, cross metathesis, and ring-closing metathesis. Our results indicate that the amino acid side chain and identity of the olefin profoundly influence the activity of cyclometalated ruthenium catalysts in *Z*-selective metathesis. The criteria set forth for achieving high conversion and *Z* selectivity are highlighted by cross metathesis and ring-closing metathesis on diverse peptide substrates. The principles outlined in this report are important not only for expanding the scope of *Z*-selective olefin metathesis to peptides but also for applying stereoselective olefin metathesis in general synthetic endeavors.



INTRODUCTION

Olefin metathesis is a highly versatile tool for the generation of carbon–carbon bonds, and a variety of applications have evolved around its implementation.^{1–5} The broad utility of olefin metathesis is a consequence of the exceptional selectivity, activity, and functional-group compatibility of select metathesis catalysts, highlighted by carbon–carbon bond formation on a variety of complex substrates including small molecules,^{6–11} natural products,^{12,13} organic and inorganic materials,^{14–18} and even proteins.^{19,20} The use of metathesis in biological applications is an emerging field of research, in part, because of advances in the genetic^{21–23} and chemical^{24–26} incorporation of alkene-containing amino acids into peptides and proteins. This has enabled the installation of a variety of carbon–carbon bonds with high fidelity for applications in peptide stapling,^{27–34} as surrogates of hydrogen bonding,^{35–37} and as methods for modifying peptides and proteins used to mimic physiologically relevant post-translational modifications.^{20,38} The application of metathesis for stabilizing peptide secondary structure and for performing selective protein modifications has implications for imparting greater metabolic stability, cellular permeability, and higher binding affinity toward biological targets.^{30,39–41} Indeed, this strategy has led to the development of “stapled” peptides used as inhibitors of

HIV fusion⁴² and assembly,^{43–46} as modulators of signaling pathways involved in cancer,^{47–50} and as selective activators of enzymes involved in diabetes.^{51,52}

Despite the tremendous success of metathesis in peptide and peptidomimetic research, the ability to control olefin geometry in the product has been met with limited success.^{53–55} Most metathesis catalysts exhibit minimal kinetic selectivity, and thus, the product distribution reflects the thermodynamic stability of each olefin isomer.⁵⁶ In many cases, a mixture of *E* and *Z* isomers is formed that is often inseparable. This imposes challenges for examining the influence of alkene geometry on the stability and activity of diverse compounds. In pursuit of catalysts with greater control over olefin products, we uncovered a series of cyclometalated ruthenium catalysts that could achieve high conversions with exquisite *Z* selectivity (Figure 1).^{57–62} The origin of *Z* selectivity for cyclometalated ruthenium catalysts involves approach of the olefin from a side-bound position (i.e., *cis* to the NHC ligand and *trans* to the chelating adamantyl) and is favored through a combination of steric and electronic effects imposed by the NHC ligand.⁶³ Although catalysts **1** and **2** demonstrate excellent selectivity in

Received: July 15, 2014

Published: August 7, 2014

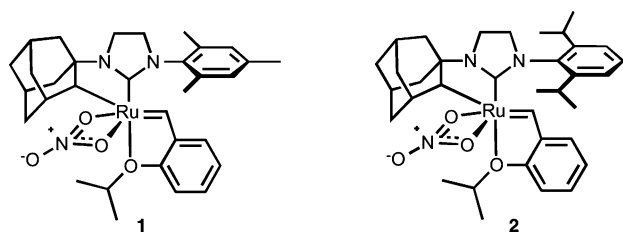


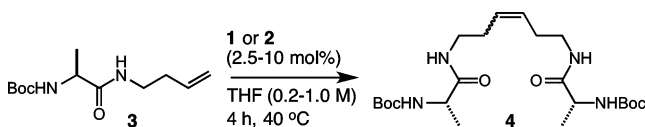
Figure 1. Z-selective cyclometalated ruthenium catalysts.

olefin metathesis, their activity on complex substrates, including peptides, remained unexplored. To this end, we sought to initiate a comprehensive evaluation of Z-selective metathesis on peptides using newly developed cyclometalated ruthenium catalysts. Through the combined efforts of homodimerization, cross metathesis and ring-closing metathesis, we have developed guidelines for assessing the influence of amino acids and peptides on catalyst activity and selectivity. These principles were applied for carrying out Z-selective metathesis on challenging substrates including peptides that comprise parallel β -sheets and on stapling of α -helical peptides.

RESULTS AND DISCUSSION

Assessing the Amino Acid Substrate Scope by Z-Selective Homodimerization. Our goal for expanding the utility of Z-selective ruthenium catalysts was to examine the influence of amino acids on the selectivity and activity of catalysts **1** and **2**. Catalysts bearing N-adamantyl substituents and bidentate nitrato ligands were found to be critical for achieving high Z selectivity,⁵⁹ and we set out to determine whether such catalysts could be applied to substrates bearing multiple functionalities and with varying steric profiles. To benchmark the reactivities of catalysts **1** and **2**, we chose to investigate the homodimerization of protected amino acids modified with homoallyl functionality (Table 1).⁶⁴ Our initial studies focused on the use of alanine **3**, as we anticipated that amino acids bearing unhindered and aliphatic side chains would provide an ideal platform for comparative studies. We began with a catalyst loading of 2.5 mol % in tetrahydrofuran (THF)

Table 1. Optimization of Homodimerization for Homoallyl-Modified Alanine **3**

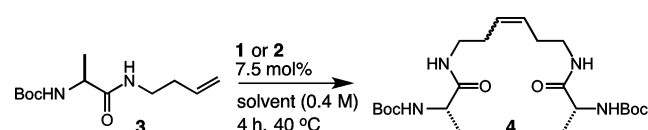


entry	catalyst (mol %)	concentration (M)	yield ^a (%)		Z selectivity ^b (%)	
			1	2	1	2
1	2.5	0.4	53	58	89	93
2	5.0	0.2	61	63	86	92
3	5.0	0.4	62	63	91	90
4	5.0	1.0	60	72	91	91
5	7.5	0.2	68	71	90	94
6	7.5	0.4	74	76	91	94
7	7.5	1.0	72	72	90	91
8	10	0.4	72	70	89	93
9	10	1.0	71	72	90	92

^aIsolated yields. ^bDetermined by ¹H or ¹³C NMR spectroscopy.

at 40 °C, and this afforded the homodimerization product **4** in 53% yield after 4 h using catalyst **1** and 58% yield in the presence of catalyst **2** (entry 1). Gratifyingly, the Z selectivity remained high (~90%) throughout the course of the reaction.⁶⁵ An increase in catalyst loading was then examined at varying concentrations. Catalyst loadings of 5 mol % afforded product **4** in 65% yield with 92% Z selectivity in the presence of catalyst **2** (entry 2). Increasing the concentration led to modest improvements in yields while maintaining high Z selectivity (entries 3 and 4). Ultimately, we found that using a catalyst loading of 7.5 mol % afforded product **4** in 76% yield with 94% Z selectivity (entry 6), and these conditions proved to be optimal among the various reaction conditions explored. We next examined the solvent dependence of the activities of catalysts **1** and **2** in homodimerization, as this is an important consideration in view of the solubility profiles of many peptidic substrates (Table 2). Several polar and nonpolar solvents were

Table 2. Solvent Effects on Homodimerization of Homoallyl-Modified Alanine **3**

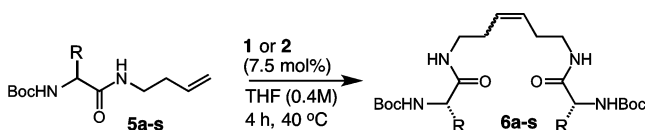


entry	solvent	yield ^a (%)		Z selectivity ^b (%)	
		1	2	1	2
1	THF	74	76	91	94
2	MeCN	51	49	88	91
3	DCE	72	72	88	92
4	DMF	55	59	84	87
5	DMSO	57	55	90	90
6	NMP	67	65	87	87
7	MeOH	65	70	85	88
8	EtOH	68	64	88	90
9	H ₂ O/ <i>t</i> -BuOH (1:1)	64	70	90	92
10	MeNO ₂	<10	<10	n.d.	n.d.

^aIsolated yields. ^bDetermined by ¹H or ¹³C NMR spectroscopy.

investigated reflecting those most often used in peptide synthesis. Coordinating solvents [e.g., acetonitrile (MeCN)] were less active in promoting Z-selective metathesis as compared to noncoordinating solvents [e.g., dichloroethane (DCE)] (entries 2 and 3). Polar solvents including dimethylformamide (DMF), dimethyl sulfoxide (DMSO), and N-methylpyrrolidone (NMP) were tolerated by catalysts **1** and **2**, affording product **4** in yields ranging from 55% to 67% and 90% Z selectivity (entries 4–6). Protic solvents including methanol (MeOH), ethanol (EtOH), and aqueous *tert*-butanol (*t*-BuOH) mixtures yielded highly enriched Z-olefin products (entries 7–9).⁶⁶ Other polar solvents including nitromethane (MeNO₂) resulted in low conversions (entry 10), presumably by activating decomposition pathways of the cyclometalated ruthenium catalysts.⁶⁷ It is worth noting that, across the variety of reaction conditions explored, the Z selectivity remained consistently high.

To probe the activities of catalysts **1** and **2** further, we investigated the homodimerization of other canonical amino acids (Table 3). Boc-protected amino acids bearing aliphatic or aromatic side chains were active in Z-selective metathesis (entries 1–4). Branched side chains from amino acids including valine (**5a**), isoleucine (**5b**), and leucine (**5c**) afforded products

Table 3. Homodimerization of Canonical Amino Acids for Investigating Side-Chain Influence on Catalytic Activity

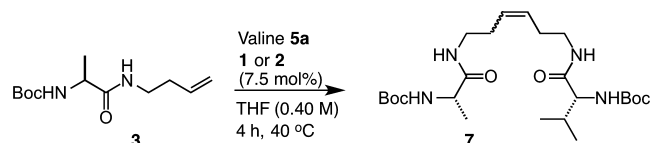
entry	amino acid	product	yield ^a (%)		Z selectivity ^b (%)	
			1	2	1	2
1	valine (5a)	6a	74	71	90	94
2	isoleucine (5b)	6b	68	72	88	92
3	leucine (5c)	6c	70	71	88	91
4	phenylalanine (5d)	6d	73	75	89	93
5	glycine (5e)	6e	<10	<10	n.d.	n.d.
6	proline (5f)	6f	<10	<5	n.d.	n.d.
7	tryptophan (5g)	6g	66	64	85	90
8	histidine (5h)	6h	<5	<5	n.d.	n.d.
9	serine (5i)	6i	72	70	84	90
10	threonine (5j)	6j	73	70	88	92
11	tyrosine (5k)	6k	64	68	87	90
12	methionine (5l)	6l	<5	<10	n.d.	n.d.
13	cysteine (5m) ^c	6m	55	53	87	92
14	aspartic acid (5n) ^d	6n	61	60	87	90
15	glutamic acid (5o) ^d	6o	74	71	88	91
16	asparagine (5p) ^e	6p	70	71	88	91
17	glutamine (5q) ^e	6q	74	74	88	91
18	lysine (5r) ^e	6r	78	81	81	89
19	arginine (5s) ^e	6s	34	33	81	89

^aIsolated yields. ^bDetermined by ¹H or ¹³C NMR spectroscopy. ^cSide chain protected with a trityl group. ^dSide chain protected as the *t*-butyl ester. ^eSide chain protected as the *t*-butyl carbamate. ^fSide chain protected with 2,2,4,6,7-pentamethyldihydrobenzofuran-5-sulfonyl (Pbf).

6a–c in yields approaching 74% with 94% Z selectivity (entries 1–3). Aromatic side chains from amino acids including phenylalanine 5d afforded product 6d in 75% yield and 93% Z selectivity in the presence of catalyst 2 (entry 4). Exceptions include glycine⁶⁸ and proline,⁶⁹ as these are inactive in homodimerization (entries 5 and 6). Amino acids bearing heterocycles had variable activity. Homodimerization of tryptophan afforded product 6g in 64% yield with 90% Z selectivity (entry 7). In contrast, histidine was deemed incompatible with catalysts 1 and 2 (entry 8).⁷⁰ Unprotected alcohols from the side chains of serine 5i or threonine 5j were tolerated by catalysts 1 and 2 but required protection to reach acceptable conversions, providing products 6i and 6j in 72% and 73% yields, respectively (entries 9 and 10). Homodimerization of tyrosine afforded product 6k in 64% yield and 87% Z selectivity in the presence of catalyst 1 and 68% yield and 90% Z selectivity using catalyst 2 (entry 11). In contrast to alcohols, side chains bearing thiols (i.e., cysteine) or thioethers (i.e., methionine 5l) generally led to catalyst deactivation (entry 12).⁷¹ Protecting the side chain of cysteine could overcome catalyst inactivity and afford product 6m in 55% yield and 87% Z selectivity (entry 13). Polar side chains bearing carboxylate (5n,o), carboxamide (5p,q), or amine (5r) functionality required protection prior to homodimerization. In these cases, yields from 70% to 80% could be achieved with high Z selectivity (entries 14–18). Side chains bearing a protected guanidinium functionality (i.e., arginine 5s) were less active in homodimerization, affording product 6s in 34% and 33% yields

using catalysts 1 and 2, respectively. These findings reveal that the identity of the amino acid side chain can profoundly influence the activity of cyclometalated ruthenium catalysts.

Assessing Side-Chain Influence and Stoichiometry on Cross Metathesis of Amino Acids. Emboldened by the success of Z-selective homodimerization of amino acids, we next evaluated the effects of varying the metathesis partner to achieve Z-selective cross metathesis (CM) (Table 4). For our

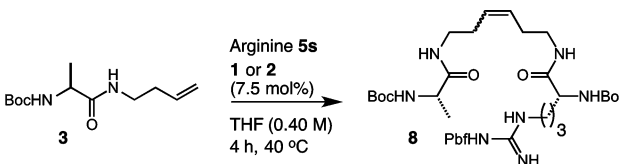
Table 4. Cross Metathesis of Amino Acids 3 and 5a

entry	equiv of 3	equiv of 5a	yield ^a (%)		Z selectivity ^b (%)	
			1	2	1	2
1	1	1	41	47	90	93
2	1	2	44	48	86	91
3	1	4	48	41	91	90
4	1	6	58	60	88	90
5	2	1	44	58	90	93
6	4	1	52	57	91	91
7	6	1	51	60	87	90

^aIsolated yields. ^bDetermined by ¹H or ¹³C NMR spectroscopy.

studies, we chose cross partners that showed variable activity in homodimerization. In this way, we could begin to classify substrates on the basis of their propensity for achieving productive CM.⁷² We explored CM using homoallyl-modified alanine 3 and the similarly reactive substrate valine 5a as the cross partner. Cross metathesis in the presence of an equimolar ratio of 3 to 5a afforded the desired heterocross product 7 in 41% yield with 90% Z selectivity (entry 1). Increasing the stoichiometry of 5a relative to 3 led to a modest increase in yield, providing product 7 in 48% yield with 91% Z selectivity (entry 2). Further increases in 5a afforded similar trends, with yields approaching 60% and 90% Z selectivity (entries 3 and 4). To demonstrate the versatility of this method, we explored conditions in which 5a was used as the limiting reagent (entries 5–7). Under these conditions, an incremental increase in the yield of product 7 was observed upon increasing the ratio of 3 to 5a. As in the case of excess 5a, modest improvements in the yield of 7 were achieved with increasing equivalents of 3, demonstrating the statistical nature of CM using similar reactive substrates.⁷³ Given the modest conversions to product and high Z selectivities, we can conclude that the products of CM are sparingly consumable using catalysts 1 and 2, ensuring that the Z selectivity can remain high throughout the course of the reaction.

We next evaluated whether amino acids of differing reactivity profiles could be used for selective CM (Table 5). In choosing the requisite cross partners, we focused on substrate 3 and homoallyl-modified arginine 5s, as they both showed relatively low reactivity in homodimerization. We began our studies using an equimolar ratio of 3 and 5s, and this afforded 8 in 46% yield and 93% Z selectivity (entry 1). Increasing the ratio of 5s to 3 led to slightly diminished yields and Z selectivities (entries 2–4).⁷⁴ By contrast, reversing the order such that 3 was in excess of 5s afforded 8 in yields of 47% and 58% using catalysts 1 and 2, respectively (entry 5). Further increasing the ratio of 3 to 5s

Table 5. Cross Metathesis of Amino Acids **3** and **5s**


entry	equiv of 3	equiv of 5s	yield ^a (%)		Z selectivity ^b (%)	
			1	2	1	2
1	1	1	46	47	90	93
2	1	2	43	48	84	90
3	1	4	38	41	84	91
4	1	6	34	38	72	88
5	2	1	47	58	88	91
6	4	1	58	60	90	92
7	6	1	62	66	87	90

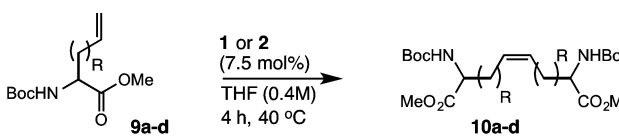
^aIsolated yields. ^bDetermined by ¹H or ¹³C NMR spectroscopy.

could achieve the heterocross product **8** in improved yields and high *Z* selectivities (entries 6 and 7). Taken together, these findings reveal that the intrinsic reactivity differences between homoallyl-modified amino acids can be used for productive *Z*-selective cross metathesis.

Influence of Allylic Heteroatoms on Homodimerization and Cross Metathesis of Noncanonical Amino Acids. The unique reactivity profiles of canonical amino acids in *Z*-selective homodimerization and CM prompted investigation of a subset of non-natural amino acids that have shown promise in peptide and protein modification using olefin metathesis. Allyl-protected amino acids including serine, cysteine, and selenocysteine have been shown to enhance the rate of metathesis when incorporated into peptides and proteins.^{38,75} Studies by Davis and co-workers ascribed the unique chemical reactivity of such amino acids through a chelation-assisted mechanism whereby precoordination of the heteroatom to ruthenium increases the effective concentrations of the alkylidene and alkene without detrimental chelation.³⁸ Moreover, softer nucleophiles such as sulfur and selenium were found to have an activating effect relative to oxygen for enhancing the rate of CM. These findings are intriguing considering that sulfur can have a deactivating effect on olefin metathesis,^{76–78} and our results suggest that sulfur-containing amino acids (e.g., compound **5l**) lead to catalyst inactivity. Nonetheless, a wealth of information suggests that heteroatoms can modulate metathesis activity,^{79–81} however, this phenomenon was unexplored using *Z*-selective cyclometalated catalysts.

To investigate the influence of allylic heteroatoms on the activities of catalysts **1** and **2**, we examined a series of allyl-protected amino acids in homodimerization (Table 6). We chose allylglycine (**9a**) and homoallylglycine (**9b**), as well as allyl-protected serine (**9c**) and cysteine (**9d**), for our studies. In this sense, **9a–d** would reveal both the role of sterics (i.e., comparison of **9a** and **9b**) and the effect of chelation by heteroatoms (i.e., comparison of **9b** to **9c,d**) in facilitating metathesis. For these tests, we investigated homodimerization of **9a** and compared its reactivity relative to that of substrate **9b**. Conversion of **9a** to the dimerized product **10a** was low using catalyst **1** or **2**, occurring in 45% yield and 90% *Z* selectivity (entry 1). By comparison, dimerization of homoallylglycine **9b** afforded product **10b** in 59% yield and 90% *Z* selectivity (entry 2). This corroborates our earlier findings that the steric

Table 6. Influence of Heteroatoms on Homodimerization of Noncanonical Amino Acids

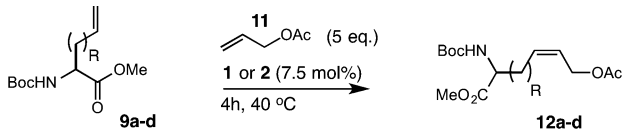


entry	R	product	yield ^a (%)		Z selectivity ^b (%)	
			1	2	1	2
1	CH ₂ (9a)	10a	44	46	88	93
2	CH ₂ CH ₂ (9b)	10b	59	58	90	92
3	CH ₂ OCH ₂ (9c)	10c	67	69	92	94
4	CH ₂ SCH ₂ (9d)	10d	74	71	90	90

^aIsolated yields. ^bDetermined by ¹H or ¹³C NMR spectroscopy.

environment around the alkene can influence the efficiency of *Z*-selective metathesis.⁵⁸ We next evaluated the effects of heteroatoms in facilitating homodimerization. Allyl-protected serine **9c** afforded product **10c** in 67% yield with 92% *Z* selectivity (entry 3). By comparison, cysteine **9d** was more active in homodimerization, leading to 71% yield and 93% *Z* selectivity in the presence of catalyst **2** (entry 4). These results suggest that allylic heteroatoms can facilitate *Z*-selective metathesis in the presence of cyclometalated ruthenium catalysts.

The insights garnered from the homodimerization of substrates **9a–d** revealed that the identity of the alkene can influence the activities of catalysts **1** and **2** in *Z*-selective metathesis. Although these studies provide important insight for assessing the intrinsic reactivity of allyl-modified amino acids with cyclometalated ruthenium catalysts, the general utility of such catalysts could be further illuminated by their use in CM. As such, we examined catalysts **1** and **2** in CM using allyl-modified amino acids **9a–d** (Table 7). To assess the relative activities of substrates **9a–d** in CM, we chose allyl acetate **11** as the cross partner, as we previously showed that **11** is highly active in *Z*-selective CM.⁸² We explored a variety of conditions to test the generality of CM including the use of solvents that are compatible with native peptides and proteins. For our initial studies, we examined CM between allylglycine **9a** and **11** under our previously optimized conditions, and this afforded the heterocross product **12a** in 42% yield and 90% *Z* selectivity. We next explored CM under aqueous conditions, including the use of additives shown to enhance the efficiency of CM on peptides and proteins.⁸³ In the presence of aqueous *tert*-butanol, the heterocross product **12a** was achieved in 38% yield with 90% *Z* selectivity (entry 2). Inclusion of salts such as LiCl or MgCl₂, which has been shown to be beneficial for enhancing metathesis on peptides,^{84,85} afforded product **12a** in 31% yield but with diminished *Z* selectivity (entries 3 and 4). These trends were also observed using homoallylglycine **9b** as the cross partner (entries 5–8). To investigate whether amino acids bearing allylic heteroatoms influence the efficiency of *Z*-selective CM, we exposed allylserine **9c** and allylcysteine **9d** to similar reaction conditions. Synthesis of the heterocross product was improved, affording **12c** in 63% yield with 92% *Z* selectivity using catalyst **2** (entry 9). The use of aqueous conditions (entry 10) or inclusion of additives (entries 11 and 12) led to slightly diminished yields and *Z* selectivity. By comparison, the use of allylcysteine **9d** as the cross partner afforded the desired product **12d** in 60% yield with 90% *Z*

Table 7. Cross Metathesis of Allyl-Modified Amino Acids with Allyl Acetate


entry	substrate	product	yield ^a (%)		Z selectivity ^b (%)	
			1	2	1	2
1 ^c	9a	12a	40	42	88	90
2 ^d			38	36	90	92
3 ^e			31	31	76	84
4 ^f			30	34	72	83
5 ^c	9b	12b	56	55	90	95
6 ^d			53	51	90	93
7 ^e			48	50	84	87
8 ^f			44	46	79	84
9 ^c	9c	12c	63	66	88	92
10 ^d			64	67	87	93
11 ^e			54	61	67	79
12 ^f			56	61	63	84
13 ^c	9d	12d	62	61	88	90
14 ^d			63	67	86	92
15 ^e			55	60	74	88
16 ^f			58	60	76	82

^aIsolated yields. ^bDetermined by ¹H or ¹³C NMR spectroscopy. ^cReaction conditions: 1 mmol of 9a–d in THF. ^dReaction conditions: 1 mmol of 9a–d in 1:1 H₂O/*t*-BuOH. ^eReaction conditions: 1 mmol of 9a–d in 1:1 H₂O/*t*-BuOH + 2 mM LiCl. ^fReaction conditions: 1 mmol of 9a–d in 1:1 H₂O/*t*-BuOH + 2 mM MgCl₂.

selectivity (entry 13). As observed with substrates 9a–c, a decrease in catalyst activity occurred under aqueous conditions and in the presence of salt additives (entries 14–16).⁸⁶ Collectively, these results suggest that the activities of catalysts 1 and 2 are highly dependent on the reaction conditions. In general, the trends observed in CM with 9a–d parallel those observed using nonchelated ruthenium catalysts;⁸⁷ however, the use of salts as additives appears to have a deactivating effect on the activity of cyclometalated ruthenium catalysts. These results lend support to the importance of the chelating ligand (i.e., bidentate versus monodentate ligand coordination) in the activities and selectivities of catalysts 1 and 2.

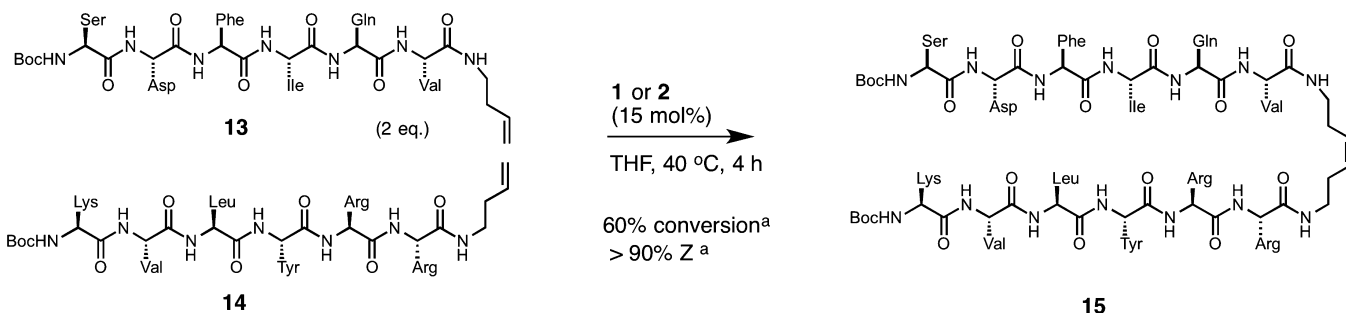
Z-Selective Cross Metathesis on Linear Peptides.

Investigation of both canonical and noncanonical amino acids in homodimerization and cross metathesis revealed that the choice of cross partner is critical to the success of ruthenium-

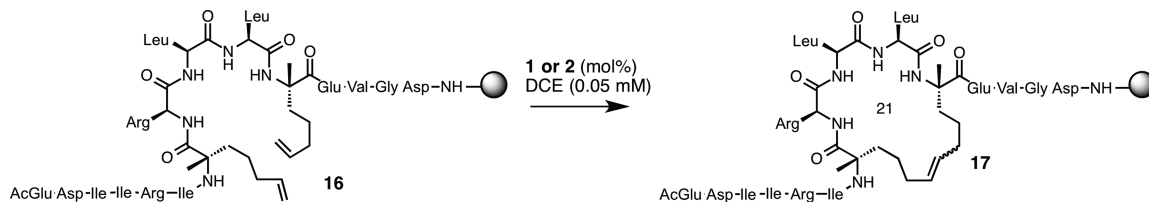
catalyzed Z-selective metathesis. In this regard, amino acid side chains bearing aliphatic, aromatic, or protected polar functionalities were highly active in metathesis. Those amino acids that generally lead to lower conversion (i.e., arginine) could undergo selective cross metathesis in the presence of a more highly reactive substrate. Moreover, the steric environments around the olefin and allylic heteroatoms were shown to impact the efficiency of Z-selective CM. Whereas these observations apply generally to amino acids that are commonly used in olefin metathesis, we wanted to investigate whether cyclometalated ruthenium catalysts could be used in CM on more complex substrates, including peptides. In choosing the requisite cross partners, we took inspiration from peptides known to adopt defined β -sheet secondary structures when tethered through a turn-promoting moiety or as part of a macrocycle.^{88–90} Such structures hold promise in applications ranging from supramolecular chemistry^{91,92} to biology^{93–95} and offer challenging substrates for catalysts 1 and 2.

A wealth of information regarding the use of peptides and small molecules as β -sheet mimics has revealed that both hydrogen bonding and amino acid side-chain pairing preferences can be used to dictate the stability of β -sheet formation.^{88,96,97} To this end, we synthesized peptides 13 and 14, which represent typical sequences found in parallel β -sheets and whose structures are known to rely on the sequence of amino acids (Scheme 1).⁸⁸ For our studies, we used an excess of peptide 13, as we had shown that less reactive amino acids, including arginine, could be used for selective cross metathesis in the presence of more highly active amino acids. Under these conditions, conversion reached 60% for the desired peptide 15 with greater than 90% Z selectivity.⁹⁸ Attempts to improve the yield of the heterocross product by conducting CM in solvents that promote hydrogen bonding and thereby preorganize the peptides to facilitate metathesis^{99–101} led to similar conversions.¹⁰² These results attest to the functional-group tolerability of cyclometalated ruthenium catalysts and point to further strategies aimed at accessing complex olefinic substrates bearing multiple functionalities.

Z-Selective Ring-Closing Metathesis on α -Helical Peptides. Our results regarding the activity of cyclometalated ruthenium catalysts in cross metathesis of amino acids and peptides revealed that the kinetic selectivities of catalysts 1 and 2 can be used to synthesize peptides highly enriched in Z-olefins. Although these studies provide a framework for promoting metathesis through judicious choice of the amino acid sequence, we observed that conversions in CM were optimal at relatively high concentrations (~0.3–0.4 M), which,

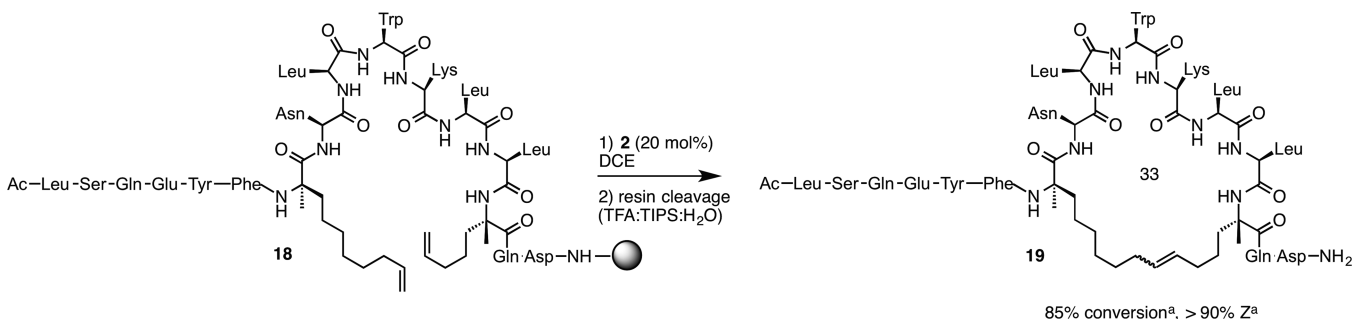
Scheme 1. Z-Selective Cross Metathesis on Peptides

^aDetermined by analytical high-performance liquid chromatography mass spectrometry (HPLC-MS).

Table 8. Z-Selective RCM to form *i, i + 4* Stapled Peptides

entry	catalyst (mol %)	resin ^a	time (h)	conversion ^{b,c} (%)		Z selectivity ^d (%)	
				1	2	1	2
1	10	Wang	2	25	20	n.d.	n.d.
2	10	TentaGel	2	40	30	n.d.	n.d.
3	10	MBHA	2	60	55	n.d.	n.d.
4	10	MBHA	4	70	60	>85	>90
5	10 (x2)	MBHA	4	75	75	>85	>90
6	10 (x2)	MBHA	4	80 ^e	70	>85	>90

^aLoading capacities for resin: Wang, 0.5 mmol/g; TentaGel, 0.25 mmol/g; MBHA, 0.5 mmol/g. ^bConversions determined by analytical HPLC of cleaved peptide. ^cAmino acids were protected prior to RCM. ^dDetermined by analytical HPLC-MS. ^eReaction carried out at 40 °C.

Scheme 2. Z-Selective RCM to form *i, i + 7* Stapled Peptides

^aDetermined by analytical HPLC-MS.

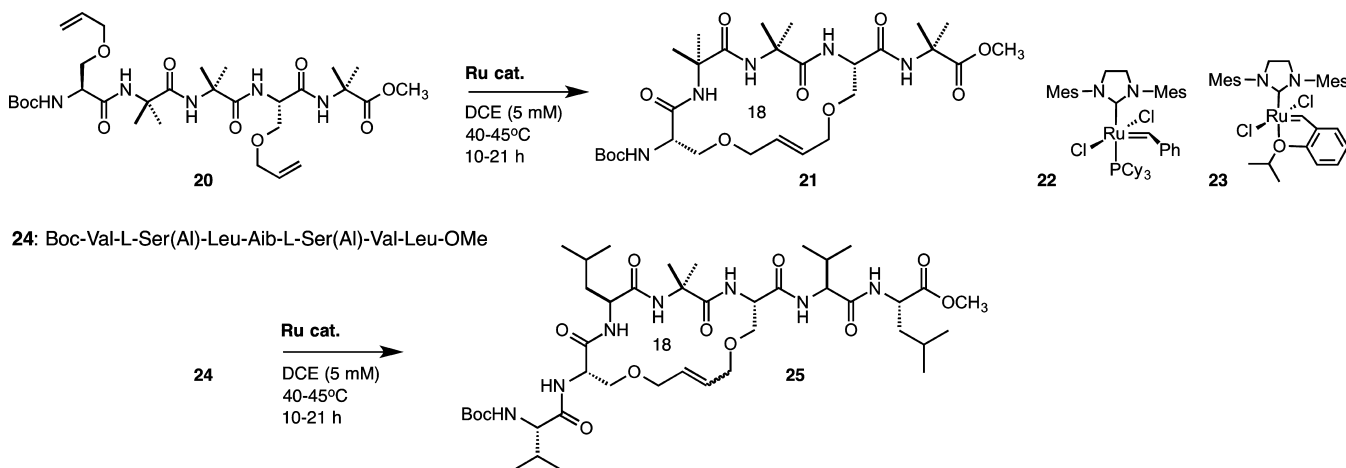
for many substrates, might be a limitation. We sought a more general strategy such that a variety of reaction conditions could be used to promote *Z*-selective metathesis on a diverse collection of peptides. To this end, we investigated ring-closing metathesis (RCM) of olefinic amino acids for the synthesis of “stapled” peptides. Such peptides hold promise as novel therapeutics by virtue of their enhanced α -helicity;^{41,103} proteolytic stability;^{34,42,104–108} and ability to target intracellular proteins involved in cancer,^{32,39,47,104} infectious disease,^{44–46} and metabolism.¹⁰⁹ As such, we set about to broaden the available catalysts used to synthesize this important class of peptides under conditions that would be amenable to comprehensive screening of catalyst activity in the presence of varying peptide sequences.

Traditional methods for the synthesis of stapled peptides by RCM have relied on the use of *O*-allyl serine^{28,29,110} or α -tetrasubstituted amino acids^{41,111–113} to install macrocyclic cross-links into synthetic peptides. Most strategies incorporate non-natural amino acids at positions spanning one (*i, i + 4*) or two (*i, i + 7*) turns of a helix that serve to preorganize the reactive side chains on the same helical face. A wealth of knowledge derived from computational^{114,115} and experimental^{47,116–118} approaches has illuminated the minimal constraints necessary for achieving RCM on peptides using first- and second-generation or Grubbs–Hoveyda ruthenium catalysts.^{119,120} An unmet challenge in the synthesis of stapled peptides has been the ability to control olefin geometry in the product, as the use of noncyclometalated ruthenium catalysts

typically gives rise to both *E* and *Z* isomers that are often inseparable. This imposes challenges for examining the role of olefin geometry in the stability and biological activity of stapled peptides, which, to date, has not been thoroughly explored.^{106,121–123} To this end, we employed catalysts **1** and **2** in *Z*-selective RCM for stapling α -helical peptides that encompass the vast majority of peptides used for biological studies.

As part of our ongoing effort to expand the utility of catalysts **1** and **2**, we chose to conduct RCM on resin-supported peptides. This would streamline the synthesis of peptides and offer a modular platform to test the activities of cyclometalated ruthenium catalysts. Our goal was to compare the activities of *Z*-selective catalysts with those of noncyclometalated ruthenium catalysts in RCM, and we focused our efforts on peptides with known biological activity. The sequence we chose is derived¹²⁴ from an α -helical peptide known to target the BCL-2 family of proteins involved in the regulation of apoptosis and whose activity is modulated by constraining the peptide through hydrocarbon stapling (Table 8).³⁴ The chemical features of peptide **16** consist of two stereochemically defined α,α -disubstituted olefinic amino acids¹²⁵ separated by one turn of a helix (i.e., olefins positioned at residues *i* and *i + 4*) that, upon ring closure, would generate a 21-membered macrocycle.

The stabilities and activities of catalysts **1** and **2** in the presence of resins were unexplored, and we examined commonly used resins for solid-phase peptide synthesis that varied based on composition and loading capacity. Throughout

Table 9. RCM to Form *i, i + 3* Stapled Peptides

entry	substrate	product	catalyst (mol %)	temperature (°C)	time (h)	conversion ^a (%)	selectivity
1	20	21	22 (10)	45	10	86	>20:1 <i>E/Z</i> ^b
2			23 (10)	45	10	85	>20:1 <i>E/Z</i> ^b
3			1 (30)	40	21	<5	n.d.
4	24	25	22 (10)	45	3.5	100	13:1 <i>E/Z</i> ^a
5			23 (10)	45	3.5	94	11:1 <i>E/Z</i> ^a
6			1 (10)	40	4	<5	n.d.

^aDetermined by analytical HPLC-MS. ^bDetermined by ¹H NMR spectroscopy.

our studies, we performed RCM in solvents that promote α -helicity [e.g., dichloroethane (DCE)] at concentrations that favor macrocyclic ring closure. Initial screening revealed that the choice of resin influenced the activities of catalysts **1** and **2** in RCM. Conversions to the desired RCM product **17** were typically low on Wang resin using 10 mol % catalyst at room temperature for 2 h (entry 1). Resins bearing hydrophilic linkers proved beneficial, affording conversions approaching 40% under the same reaction conditions (entry 2). The use of MBHA resin led to 60% conversion (entry 3), and we focused further optimization using this resin. We next explored the effects of reaction time and catalyst loading on RCM. Prolonging the reaction led to modest improvements, generating product **17** in 70% conversion with greater than 90% *Z* selectivity (entry 4), and subjecting the resin-bound peptide to successive rounds of catalyst¹¹¹ resulted in conversions of 75% using two cycles of catalyst addition (entry 5). Increasing the temperature to 40 °C afforded **17** in 80% yield and with greater than 90% *Z* selectivity (entry 6).¹²⁶

To probe the generality of the method, we investigated peptides bearing olefinic amino acids spanning two turns (*i, i + 7*) of a helix with varying amino acid sequences (Scheme 2).¹²⁷ To span the distance of two helical turns, we modified the N-terminal olefinic amino acid by increasing the tether length (from five to eight carbon atoms) and inverting the stereochemical configuration (from *S* to *R*), both of which were predicted to facilitate RCM.^{41,104,128} Under our optimized conditions, conversions of 85% for the desired RCM product **19** could be achieved after two cycles of catalyst addition with greater than 90% *Z* selectivity. These results demonstrate that cyclometalated ruthenium catalysts can promote *Z*-selective RCM on solid support for the synthesis of stapled peptides bearing all hydrocarbon cross-links.

***i, i + 3 Z*-Selective Ring-Closing Metathesis Attempts on Aib-Containing Peptides.** We earlier demonstrated that Aib-rich peptides bearing *i, i + 3* L-serine *O*-allyl residues afford

highly *E*-selective RCM products,¹¹⁰ in studies motivated, in part, by a theoretical prediction that suggested an RCM-derived 18-membered ring using these side chains would serve as a minimal constraint for the 3₁₀-helix.¹²⁹ We were curious to see whether a *Z*-selective catalyst could overcome any substrate bias favoring the *E*-olefin geometry. To this end, we studied the RCM conversions of pentapeptide Boc-L-Ser(Al)-Aib-Aib-L-Ser(Al)-Aib-OMe (**20**) and heptapeptide Boc-L-Val-L-Ser(Al)-L-Leu-Aib-L-Ser(Al)-L-Val-L-Leu-OMe (**24**) to macrocycles **21** and **25**, respectively, using second-generation catalysts **22** and **23** and *Z*-selective catalyst **1** (Table 9). As expected from our earlier studies, peptide **20** readily cyclized to the *E* macrocycle in the presence of 10 mol % **22** or **23** in DCE held at 45 °C for 10 h (entries 1 and 2). Under similar reaction conditions, no macrocyclization was observed with catalyst **1**, even with a 3-fold increase in catalyst loading and extended reaction time (entry 3). The same behavior was observed for heptapeptide **24**, although, in this case, the *Z* macrocycle did form with **22** or **23** to the extent of ca. 8% (entries 4 and 5). Peptide **24** rapidly cyclized with the second-generation catalysts in refluxing dichloromethane, but it was unreactive toward catalyst **1** under identical conditions (entry 6). Whereas most peptide side-chain RCM reactions produce *E/Z* mixtures, the minimal *i, i + 3* cross-link in these Aib-containing systems seems reluctant to form the *Z*-olefin, probably a consequence of the conformational restrictions imposed by the C α -tetrasubstituted α -amino residues.¹³⁰

These results demonstrate that the *i + 1* and *i + 2* Aib residues play a role in controlling the *E*-selective RCM behavior with catalysts **22** and **23** and this conformational bias cannot be overcome by *Z*-selective catalysts. These studies highlight the importance of peptide sequence and conformation in controlling olefin geometry in the macrocyclic product and point to further strategies aimed at understanding how these parameters affect the efficiency of *Z*-selective RCM.

CONCLUSIONS

In summary, we have reported the first examples of *Z*-selective metathesis on peptides using cyclometalated ruthenium catalysts. By examining a broad range of canonical and noncanonical amino acids in cross metathesis, homodimerization, and ring-closing metathesis, we have gleaned important criteria for achieving high conversion while maintaining excellent *Z* selectivity. The following insights based on our results are summarized:

The side-chain identity of an amino acid can dictate the activities of catalysts **1** and **2** in cross metathesis and homodimerization. In general, amino acids bearing aliphatic or aromatic side chains (e.g., alanine, leucine, and phenylalanine) are highly active in metathesis, with yields approaching 85% and 94% *Z* selectivity. Exceptions include glycine and proline, as these are inactive in metathesis. Sterically hindered side chains (e.g., valine or isoleucine) and amino acids bearing bulky protecting groups lead to lower conversions but without degradation of *Z* selectivity. Amino acids bearing carboxylate functionalities (i.e., glutamic acid and aspartic acid) require protection, as substrates bearing acidic functionalities can lead to catalyst decomposition and diminished *Z* selectivity. Amino acids bearing thiols or thioethers generally deactivate cyclometalated ruthenium catalysts; however, in some cases, the use of protecting groups can lead to productive turnovers. Side chains bearing hydroxyl groups (e.g., serine or threonine) are generally tolerated by catalysts **1** and **2**, whereas amino acids bearing heterocycles have variable activity. Tryptophan is active in *Z*-selective homodimerization and cross metathesis, whereas histidine is generally inactive. Polar side chains bearing carboxamide (i.e., glutamine or asparagine) or guanidinium (i.e., arginine) functionalities are generally intolerant of cyclometalated ruthenium catalysts. Protection of these side chains can restore catalyst activity, leading to products highly enriched in *Z*-olefins.

Cross metathesis and homodimerization of amino acids and peptides using *Z*-selective ruthenium catalysts can be performed in a variety of solvents, provided that the acidity of the reaction medium is kept minimal. The use of solvents such as MeCN, DMSO, and DMF generally leads to lower conversions than the use of noncoordinating solvents (e.g., DCE). The use of protic solvents (e.g., MeOH, EtOH, or H₂O) can lead to products enriched in *Z*-olefins. Prolonged reaction times in protic solvents can, in some cases, lead to decomposition of catalysts **1** and **2**.

Amino acids bearing allylic or homoallylic functionality are active in *Z*-selective metathesis. In general, higher conversions in homodimerization and CM can be achieved using homoallylic functionalities, particularly for sterically hindered substrates. Noncanonical amino acids containing allylic heteroatoms including those that could be incorporated into peptides and proteins are active in *Z*-selective cross metathesis and follow trends similar to those of noncyclometalated ruthenium catalysts. The use of aqueous conditions in the presence of salts as additives appears to diminish the activities of catalysts **1** and **2**.

Cyclometalated ruthenium catalysts can be used to synthesize stapled peptides bearing hydrocarbon olefinic cross-links positioned at residues *i*, *i* + 4 or *i*, *i* + 7. To probe the limits of these catalysts in peptide stapling, we exposed *Z*-selective catalysts to Aib-rich peptides bearing *O*-allyl serine cross-links positioned at residues *i* and *i* + 3 that predominantly

give rise to highly *E*-selective macrocyclic products. In these cases, catalysts such as **1** failed to undergo *Z*-selective RCM, suggesting that conformational restrictions imposed by substrates such as **20** can influence the activities of cyclometalated ruthenium catalysts **1** and **2** in RCM.

Notably, compounds **15**, **17**, and **19** represent the most complex substrates synthesized by cyclometalated ruthenium catalysts, and this bodes well for further studies aimed at applying *Z*-selective metathesis on substrates bearing multiple functionalities. It is envisioned that the studies reported herein will serve as a guideline in choosing appropriate alkene cross partners or promoting RCM on peptides. We anticipate that cyclometalated ruthenium catalysts could access new structures and provide insight into the role of alkene geometry in the biological activities of stapled peptides. Moreover, installation of *Z*-alkenes into peptides and proteins could allow sites for further modifications. Progress in the design and development of stereoselective ruthenium catalysts will continue to broaden the application of olefin metathesis in natural-product synthesis and in biology.

ASSOCIATED CONTENT

Supporting Information

Experimental details and characterization data for all compounds. This material is available free of charge via the Internet at <http://pubs.acs.org>

AUTHOR INFORMATION

Corresponding Authors

doleary@pomona.edu
rhg@caltech.edu

Notes

The authors declare no competing financial interest.

ACKNOWLEDGMENTS

This work was financially supported by the NIH (NIH R01-GM031332). Research at Pomona College was funded in part by the Gordon and Betty Moore Foundation. NMR spectra were obtained on instruments supported by the NIH (RR027690). Materia, Inc., is acknowledged for the generous donation of catalysts **1** and **2**. The authors also thank Scott Virgil (Caltech Center for Catalysis and Chemical Synthesis), Samir Das, and Arundhati Nag for helpful discussions.

REFERENCES

- (1) Furstner, A. *Angew. Chem., Int. Ed.* **2000**, *39*, 3012.
- (2) Mol, J. *J. Mol. Catal. A: Chem.* **2004**, *213*, 39.
- (3) Samojłowicz, C.; Grela, K. *ARKIVOC* **2011**, *4*, 71.
- (4) Schrock, R. R. *Chem. Rev.* **2002**, *102*, 145.
- (5) Trnka, T. M.; Grubbs, R. H. *Acc. Chem. Res.* **2001**, *34*, 18.
- (6) Mangold, S. L.; Prost, L. R.; Kiessling, L. L. *Chem. Sci.* **2012**, *3*, 772.
- (7) Donohoe, T. J.; Fishlock, L. P.; Procopiou, P. A. *Chem.—Eur. J.* **2008**, *14*, 5716.
- (8) Donohoe, T. J.; Orr, A. J.; Bingham, M. *Angew. Chem., Int. Ed.* **2006**, *45*, 2664.
- (9) Schreiber, S. L. *Science* **2000**, *287*, 1964.
- (10) Schuster, M.; Blechert, S. *Angew. Chem., Int. Ed.* **1997**, *36*, 2036.
- (11) Tatton, M. R. S.; I. Donohoe, T. J. *Org. Lett.* **2014**, *16*, 1920.
- (12) Hoveyda, A. H.; Malcolmson, S. J.; Meek, S. J.; Zhugralin, A. R. *Angew. Chem., Int. Ed.* **2010**, *49*, 34.
- (13) Nicolaou, K. C.; Bulger, P. G.; Sarlah, D. *Angew. Chem., Int. Ed.* **2005**, *44*, 4490.

- (14) Kim, N. Y.; Jeon, N. L.; Choi, I. S.; Takami, S.; Harada, Y.; Finnie, K. R.; Girolami, G. S.; Nuzzo, R. G.; Whitesides, G. M.; Laibinis, P. E. *Macromolecules* **2000**, *33*, 2793.
- (15) Leitgeb, A.; Wappel, J.; Slugovc, C. *Polymer* **2010**, *51*, 2927.
- (16) Liu, X.; Basu, A. *J. Organomet. Chem.* **2006**, *691*, 5148.
- (17) Sveinbjörnsson, B. R.; Weitekamp, R. A.; Miyake, G. M.; Xia, Y.; Atwater, H. A.; Grubbs, R. H. *Proc. Natl. Acad. Sci. U.S.A.* **2012**, *109*, 14332.
- (18) Weitekamp, R. A.; Atwater, H. A.; Grubbs, R. H. *J. Am. Chem. Soc.* **2013**, *135*, 16817.
- (19) Binder, J. B.; Raines, R. T. *Curr. Opin. Chem. Biol.* **2008**, *12*, 767.
- (20) Lin, Y. A.; Chalker, J. M.; Davis, B. G. *ChemBioChem.* **2009**, *10*, 959.
- (21) Song, W.; Wang, Y.; Qu, J.; Lin, Q. *J. Am. Chem. Soc.* **2008**, *130*, 9654.
- (22) van Hest, J. C. M.; Kiick, K. L.; Tirrell, D. A. *J. Am. Chem. Soc.* **2000**, *122*, 1282.
- (23) Zhang, Z.; Wang, L.; Brock, A.; Schultz, P. G. *Angew. Chem., Int. Ed.* **2002**, *41*, 2840.
- (24) Bernardes, G. J. L.; Chalker, J. M.; Errey, J. C.; Davis, B. G. *J. Am. Chem. Soc.* **2008**, *130*, 5052.
- (25) Lin, Y. A.; Boutourel, O.; Lercher, L.; Bhushan, B.; Paton, R. S.; Davis, B. G. *J. Am. Chem. Soc.* **2013**, *135*, 12156.
- (26) Zhu, Y.; van der Donk, W. A. *Org. Lett.* **2001**, *3*, 1189.
- (27) Miller, S. J.; Blackwell, H. E.; Grubbs, R. H. *J. Am. Chem. Soc.* **1996**, *118*, 9606.
- (28) Blackwell, H. B.; Grubbs, R. H. *Angew. Chem., Int. Ed.* **1998**, *37*, 3281.
- (29) Blackwell, H. B.; Sadowsky, J. D.; Howard, R. J.; Sampson, N. S.; Chao, J. A.; Steinmetz, W. E.; O'Leary, D. J.; Grubbs, R. H. *J. Org. Chem.* **2001**, *66*, 5291.
- (30) Brown, C. J.; Quah, S. T.; Jong, J.; Goh, A. M.; Chiam, P. C.; Khoo, K. H.; Choong, M. L.; Lee, M. A.; Yurlova, L.; Zolghadr, K.; Joseph, T. L.; Verma, C. S.; Lane, D. P. *ACS Chem. Biol.* **2013**, *8*, 506.
- (31) Gionnet-Estieu, K.; Guichard, G. *Exp. Opin. Drug Discovery* **2011**, *6*, 937.
- (32) Verdine, G. L.; Hilinski, G. J. *Methods Enzymol.* **2012**, *503*, 3.
- (33) Verdine, G. L.; Walensky, L. D. *Clin. Cancer Res.* **2007**, *13*, 7264.
- (34) Walensky, L. D.; Kung, A. L.; Escher, I.; Malia, T. J.; Barbutto, S.; Wright, R. D.; Wagner, G.; Verdine, G. L.; Korsmeyer, S. J. *Science* **2004**, *305*, 1466.
- (35) Henchey, L. K.; Jochim, A. L.; Arora, P. S. *Curr. Opin. Chem. Biol.* **2008**, *12*, 692.
- (36) Liu, J.; Wang, D.; Zheng, Q.; Lu, M.; Arora, P. S. *J. Am. Chem. Soc.* **2008**, *130*, 4334.
- (37) Patgiri, A.; Jochim, A. L.; Arora, P. S. *Acc. Chem. Res.* **2008**, *41*, 1289.
- (38) Lin, Y. A.; Chalker, J. M.; Davis, B. G. *J. Am. Chem. Soc.* **2010**, *132*, 16805.
- (39) Bernal, F.; Wade, M.; Godes, M.; Davis, T. N.; Whitehead, D. G.; Kung, A. L.; Wahl, G. M.; Walensky, L. D. *Cancer Cell* **2010**, *18*, 411.
- (40) Phillips, C.; Roberts, L. R.; Schade, M.; Bazin, R.; Bent, A.; Davies, N. L.; Moore, R.; Pannifer, A. D.; Pickford, A. R.; Prior, S. H.; Read, C. M.; Scott, A.; Brown, D. G.; Xu, B.; Irving, S. L. *J. Am. Chem. Soc.* **2011**, *133*, 9696.
- (41) Schafmeister, C. E.; Po, J.; Verdine, G. L. *J. Am. Chem. Soc.* **2000**, *122*, 5891.
- (42) Bird, G. H.; Madani, N.; Perry, A. F.; Princiotta, A. M.; Supko, J. G.; He, X.; Gavathiotis, E.; Sodroski, J. G.; Walensky, L. D. *Proc. Natl. Acad. Sci. U.S.A.* **2010**, *107*, 14093.
- (43) Bhattacharya, S.; Zhang, H.; Debnath, A. K.; Cowburn, D. J. *Biol. Chem.* **2008**, *283*, 16274.
- (44) Long, Y. Q.; Huang, S. X.; Zawahir, Z.; Xu, Z. L.; Li, H.; Sanchez, T. W.; Zhi, Y.; DeHouwer, S.; Christ, F.; Debyser, Z.; Neamati, N. *J. Med. Chem.* **2013**, *56*, 5601.
- (45) Zhang, H.; Curreli, F.; Waheed, A. A.; Mercredi, D. Y.; Mehta, M.; Bhargava, P.; Scacalossi, D.; Tong, X.; Lee, S.; Cooper, A.; Summers, M. F.; Freed, E. O.; Debnath, A. K. *Retrovirology* **2013**, *10*, 136.
- (46) Zhang, H.; Zhao, Q.; Bhattacharya, S.; Waheed, A. A.; Tong, X.; Hong, A.; Heck, S.; Curreli, F.; Goger, M.; Cowburn, D.; Freed, E. O.; Debnath, A. K. *J. Mol. Biol.* **2008**, *378*, 565.
- (47) Chang, Y. S.; Graves, B.; Guerlavais, V.; Tovar, C.; Packman, K.; Tob, K.-H.; Olsson, K. A.; Kesavana, K.; Gangurde, P.; Mukherjee, A.; Bakera, T.; Darlaca, K.; Elkina, C.; Filipovich, Z.; Qureshi, F. Z.; Caia, H.; Berry, P.; Feyfanta, E.; Shia, X. E.; Horsticka, J.; Annisa, D. A.; Manning, A. M.; Fotouhib, N.; Nasha, H.; Vassilev, L. T.; Sawyer, T. K. *Proc. Natl. Acad. Sci. U.S.A.* **2013**, *110*, e3445.
- (48) Takada, K.; Zhu, D.; Bird, G. H.; Sukhdeo, K.; Zhao, J. J.; Mani, M.; Lemieux, M.; Carrasco, D. E.; Ryan, J.; Horst, D.; Fulciniti, M.; Munshi, N. C.; Xu, W.; Kung, A. L.; Shivdasani, R. A.; Walensky, L. D.; Carrasco, D. R. *Sci. Transl. Med.* **2012**, *4*, 148ra117.
- (49) Hao, Y.; Wang, C.; Cao, B.; Hirsch, B. M.; Song, J.; Markowitz, S. D.; Ewing, R. M.; Sedwick, D.; Liu, L.; Zheng, W.; Wang, Z. *Cancer Cell* **2013**, *23*, 583.
- (50) Grossmann, T. N.; Yeh, J. T. H.; Bowman, B. R.; Chu, Q.; Moellering, R. E.; Verdine, G. L. *Proc. Natl. Acad. Sci. U.S.A.* **2012**, *109*, 17942.
- (51) Danial, N. N.; Walensky, L. D.; Zhang, C.-Y.; Choi, C. S.; Fisher, J. K.; Molina, A. J. A.; Datta, S. R.; Pitter, K. L.; Bird, G. H.; Wikstrom, J. D.; Deeney, J. T.; Robertson, K.; Morash, J.; Kulkarni, A.; Neschen, S.; Kim, S.; Greenberg, M. E.; Corkey, B. E.; Shirihai, O. S.; Shulman, G. I.; Lowell, B. B.; Korsmeyer, S. J. *Nat. Med.* **2008**, *14*, 144.
- (52) Szlyk, B.; Braun, C. R.; Ljubicic, S.; Patton, E.; Bird, G. H.; Osundiji, M. A.; Matschinsky, F. M.; Walensky, L. D.; Danial, N. N. *Nat. Struct. Mol. Biol.* **2014**, *21*, 36.
- (53) Lee, C. W.; Grubbs, R. H. *Org. Lett.* **2000**, *2*, 2145.
- (54) Wang, Y.; Jimenez, M.; Hansen, A.; Raiber, E. A.; Schreiber, S. L.; Young, D. W. *J. Am. Chem. Soc.* **2011**, *133*, 9196.
- (55) Prunet, J. *Angew. Chem., Int. Ed.* **2003**, *42*, 2826.
- (56) Grubbs, R. H., Ed. *Handbook of Metathesis*; Wiley-VCH: Weinheim, Germany, 2003; Vol. 1.
- (57) Keitz, B. K.; Endo, K.; Patel, P. R.; Herbert, M. B.; Grubbs, R. H. *J. Am. Chem. Soc.* **2012**, *134*, 693.
- (58) Quigley, B. L.; Grubbs, R. H. *Chem. Sci.* **2014**, *5*, 501.
- (59) Rosebrugh, L. E.; Herbert, M. B.; Marx, V. M.; Keitz, B. K.; Grubbs, R. H. *J. Am. Chem. Soc.* **2013**, *135*, 1276.
- (60) Endo, K.; Grubbs, R. H. *J. Am. Chem. Soc.* **2011**, *133*, 8525.
- (61) Cannon, J. S.; Grubbs, R. H. *Angew. Chem., Int. Ed.* **2013**, *52*, 9001.
- (62) Herbert, M. B.; Marx, V. M.; Pederson, R. L.; Grubbs, R. H. *Angew. Chem., Int. Ed.* **2013**, *52*, 310.
- (63) Liu, P.; Xu, X.; Dong, X.; Keitz, B. K.; Herbert, M. B.; Grubbs, R. H.; Houk, K. *J. Am. Chem. Soc.* **2012**, *134*, 1464.
- (64) Homoallyl-modified amino acids were used to benchmark the intrinsic reactivity of amino acids in homodimerization using cyclometalated ruthenium catalysts. We favored this approach over the analogous allyl-modified amino acids to reduce the chance of competing olefin isomerization that has been observed with cyclometalated ruthenium catalysts.
- (65) A reaction time of 4 h was deemed optimal under the reported conditions. Extended reaction times led to minor amounts of Z degradation
- (66) Prolonged heating in the presence of protic solvents can lead to decomposition of catalysts 1 and 2 with concomitant Z degradation.
- (67) Herbert, M. B.; Lan, Y.; Keitz, B. K.; Liu, P.; Endo, K.; Day, M. W.; Houk, K.; Grubbs, R. H. *J. Am. Chem. Soc.* **2012**, *134*, 7861.
- (68) We note that chelation could account for the inactivity of glycine toward homodimerization.
- (69) We have yet to fully explain the low activity of homoallyl-modified proline in Z-selective homodimerization. Further insight into this observation is the subject of ongoing investigations.
- (70) Protecting the side chain of histidine did not improve the yield of homodimerization
- (71) These results are consistent with observations that sulfur-containing substrates can have deleterious effects on catalyst activity.

- (72) Chatterjee, A. K.; Choi, T.-L.; Sanders, D. P.; Grubbs, R. H. *J. Am. Chem. Soc.* **2003**, *125*, 11360.
- (73) Exposing the dimer of substrate **3** or **5a** to the reaction conditions did not improve the yield of product **7**, nor did it lead to significant Z degradation. This supports the observation that secondary metathesis events occur slowly with homoallyl-modified amino acids.
- (74) Using an excess of arginine **5s** can lead to minor amounts of catalyst decomposition and Z degradation over extended reaction times.
- (75) Chalker, J. M.; Goncalo, J. L. B.; Davis, B. D. *Acc. Chem. Res.* **2011**, *44*, 730.
- (76) Ben-Asuly, A.; Tzur, E.; Diesendruck, C. E.; Sigalov, M.; Goldberg, I.; Lemcoff, N. G. *Organometallics* **2008**, *27*, 811.
- (77) McReynolds, M. D.; Dougherty, J. M.; Hanson, P. R. *Chem. Rev.* **2004**, *104*, 2239.
- (78) Schwab, P.; Grubbs, R. H.; Ziller, J. W. *J. Am. Chem. Soc.* **1996**, *118*, 100.
- (79) Hoveyda, A. H.; Lombardi, P. J.; O'Brien, R. V.; Zhugralin, A. R. *J. Am. Chem. Soc.* **2009**, *131*, 8378.
- (80) Hoye, T. R.; Zhao, H. *Org. Lett.* **1999**, *1*, 1123.
- (81) Nicolaou, K. C.; Leung, G. Y. C.; Dethe, D. H.; Guduru, R.; Sun, Y.-P.; Lim, C. S.; Chen, D. Y. K. *J. Am. Chem. Soc.* **2008**, *130*, 10019.
- (82) Hartung, J.; Grubbs, R. H. *J. Am. Chem. Soc.* **2013**, *135*, 10183.
- (83) Lin, Y. A.; Chalker, J. M.; Davis, B. G. *J. Am. Chem. Soc.* **2010**, *132*, 16805.
- (84) Roberts, K. S.; Sampson, N. S. *J. Org. Chem.* **2003**, *68*, 2020.
- (85) Whelan, A. N.; Elaridi, J.; Mulder, R. J.; Robinson, A. J.; Jackson, W. R. *Can. J. Chem.* **2005**, *83*, 875.
- (86) We believe that salt metathesis could account for the lower activity of catalysts **1** and **2** in the presence of lithium chloride or magnesium chloride. Exchange of a bidentate nitrate ligand to a monodentate chloride ligand has been observed to decrease the catalytic activity of cyclometalated ruthenium complexes.
- (87) Lin, Y. A.; Chalker, J. M.; Floyd, N.; Bernardes, C. J. L.; Davis, B. G. *J. Am. Chem. Soc.* **2008**, *130*, 9642.
- (88) Almeida, A. M.; Li, R.; Gellman, S. H. *J. Am. Chem. Soc.* **2012**, *134*, 75.
- (89) Freire, F.; Almeida, A. M.; Fisk, J. D.; Steinkruger, J. D.; Gellman, S. H. *Angew. Chem. Int. Ed.* **2011**, *50*, 8735.
- (90) Woods, R. J.; Brower, J. O.; Castellanos, E.; Hashemzadeh, M.; Khakshoor, O.; Russu, W. A.; Nowick, J. S. *J. Am. Chem. Soc.* **2007**, *129*, 2548.
- (91) Cheng, P. N.; Pham, J. D.; Nowick, J. S. *J. Am. Chem. Soc.* **2013**, *135*, 5477.
- (92) Nowick, J. S. *Acc. Chem. Res.* **2008**, *41*, 1319.
- (93) Cheng, P. N.; Liu, C.; Zhao, M.; Eisenberg, D.; Nowick, J. S. *Nat. Chem.* **2012**, *4*, 927.
- (94) Chiti, F.; Dobson, C. M. *Annu. Rev. Biochem.* **2006**, *75*, 333.
- (95) Karran, E.; Mercken, M.; De Strooper, B. *Nat. Rev. Drug Discovery* **2011**, *10*, 698.
- (96) Fisk, J. D.; Gellman, S. H. *J. Am. Chem. Soc.* **2001**, *123*, 343.
- (97) Fooks, H. M.; Martin, A. C.; Woolfson, D. N.; Sessions, R. B.; Hutchinson, E. G. *J. Mol. Biol.* **2006**, *356*, 32.
- (98) The remaining mass balance in the Z-selective CM of peptides **13** and **14** can be attributed to unreacted starting material and byproducts resulting from homodimerization.
- (99) Clark, T. D.; Ghadiri, M. R. *J. Am. Chem. Soc.* **1995**, *117*, 12364.
- (100) Yang, X.; Gong, B. *Angew. Chem., Int. Ed.* **2005**, *44*, 1352.
- (101) Zeng, J.; Wang, W.; Deng, P.; Feng, W.; Zhou, J.; Yang, Y.; Yuan, L.; Yamato, K.; Gong, B. *Org. Lett.* **2011**, *13*, 3798.
- (102) Performing cross metathesis in the presence of solvents that can influence interstrand hydrogen bonding including DMSO, DCE, and aqueous *tert*-butanol mixtures showed no appreciable increase in the yield of the heterocross product.
- (103) Guo, Z.; Mohanty, U.; Noehre, J.; Sawyer, T. K.; Sherman, W.; Krilov, G. *Chem. Biol. Drug Des.* **2010**, *75*, 348.
- (104) Bernal, F.; Tyler, A. F.; Kormeyer, S. J.; Walensky, L. D.; Verdine, G. L. *J. Am. Chem. Soc.* **2007**, *129*, 2456.
- (105) Bird, G. H.; Bernal, F.; Pitter, K.; Walensky, L. D. *Methods Enzymol.* **2008**, *446*, 369.
- (106) Chapuis, H.; Slaninova, J.; Bednarova, L.; Monincova, L.; Budesinsky, M.; Cerovsky, V. *Amino Acids* **2012**, *43*, 2047.
- (107) Green, B. R.; Klein, B. D.; Lee, H. K.; Smith, M. D.; White, S. H.; Bulaj, G. *Bioorg. Med. Chem.* **2013**, *21*, 303.
- (108) Sviridov, D. O.; Ikpot, I. Z.; Stonik, J.; Drake, S. K.; Amar, M.; Osei-Hwedieh, D. O.; Piszczek, G.; Turner, S.; Remaley, A. T. *Biochem. Biophys. Res. Commun.* **2011**, *410*, 446.
- (109) Bird, G. H.; Gavathiotis, E.; Labelle, J. L.; Katz, S. G.; Walensky, L. D. *ACS Chem. Biol.* **2014**, *9*, 831.
- (110) Boal, A. K.; Guryanov, I.; Moretto, A.; Crisma, M.; Lanni, E. L.; Toniolo, C.; Grubbs, R. H.; O'Leary, D. J. *J. Am. Chem. Soc.* **2007**, *129*, 6986.
- (111) Kim, Y. W.; Grossmann, T. N.; Verdine, G. L. *Nat. Protoc.* **2011**, *6*, 761.
- (112) Toniolo, C.; Benedetti, E. *Trends Biochem. Sci.* **1991**, *16*, 350.
- (113) Bird, G. H.; Crannell, W. C.; Walensky, L. D. *Curr. Protoc. Chem. Biol.* **2011**, *3*, 99.
- (114) Kutchukian, P. S.; Yang, J. S.; Verdine, G. L.; Shakhnovich, E. I. *J. Am. Chem. Soc.* **2009**, *131*, 4622.
- (115) Vanhee, P.; van der Sloot, A. M.; Verschuere, E.; Serrano, L.; Rousseau, F.; Schymkowitz, J. *Trends Biotechnol.* **2011**, *29*, 231.
- (116) Boal, A. K.; Guryanov, I.; Moretto, A.; Crisma, M.; Lanni, E. L.; Toniolo, C.; Grubbs, R. H.; O'Leary, D. J. *J. Am. Chem. Soc.* **2007**, *129*, 6986.
- (117) Kim, Y.-W.; Kutchukian, P. S.; Verdine, G. L. *Org. Lett.* **2010**, *12*, 3046.
- (118) Kim, Y. W.; Verdine, G. L. *Bioorg. Med. Chem. Lett.* **2009**, *19*, 2533.
- (119) Bergman, Y. E.; Del Borgo, M. P.; Gopalan, R. D.; Jalal, S.; Unabia, S. E.; Ciampini, M.; Clayton, D. J.; Fletcher, J. M.; Mulder, R. J.; Wilce, J. A.; Aguilar, M.-I.; Perlmutter, P. *Org. Lett.* **2009**, *11*, 4438.
- (120) Shim, S. Y.; Kim, Y. W.; Verdine, G. L. *Chem. Biol. Drug Des.* **2013**, *82*, 635.
- (121) Cianni, A. D.; Carotenuto, A.; Brancaccio, D.; Novellino, E.; Reubi, J. C.; Beetschen, K.; Papini, A. M.; Ginanneschi, M. *J. Med. Chem.* **2010**, *53*, 6188.
- (122) Stymiest, J. L.; Mitchell, B. F.; Wong, S.; Vederas, J. C. *J. Org. Chem.* **2005**, *70*, 7799.
- (123) van Lierop, B. J.; Robinson, S. D.; Kompella, S. N.; Belgi, A.; McArthur, J. R.; Hung, A.; MacRaild, C. A.; Adams, D. J.; Norton, R. S.; Robinson, A. J. *ACS Chem. Biol.* **2013**, *8*, 1815.
- (124) Peptide **16** is a modified sequence of the known BID peptide used to target the BCL-2 family of proteins. We chose to modify the original peptide sequence to facilitate synthesis.
- (125) The non-natural amino acid Fmoc-(S)-2-(4-pentenyl)alanine was incorporated at both residues *i* and *i* + 4.
- (126) Using higher temperatures or conducting RCM under microwave conditions led to catalyst decomposition.
- (127) Peptide sequence **18** is derived from a sequence of the tumor suppressor protein p53.
- (128) Baek, S.; Kutchukian, P. S.; Verdine, G. L.; Huber, R.; Holak, T. A.; Lee, K. W.; Popowicz, G. M. *J. Am. Chem. Soc.* **2012**, *134*, 103.
- (129) Saviano, M.; Benedetti, E.; Vitale, R. M.; Kaptein, B.; Broxterman, Q. B.; Crisma, M.; Formaggio, F.; Toniolo, C. *Macromolecules* **2002**, *35*, 4204.
- (130) Our earlier study focused mainly on the octapeptide Boc-Aib-Aib-Aib-Ser(O-allyl)-Aib-Aib-Ser(O-allyl)-Aib-OMe that afforded highly E-selective (>20:1 E/Z) macrocycles. From these studies, we can conclude that Aib residues at positions *i* + 1 and *i* + 2 control the E/Z ratio of the RCM product.