



Published in final edited form as:

*Curr Drug Metab.* 2008 September ; 9(7): 581–591.

## Medicinal Plants and Cancer Chemoprevention

**Avni G. Desai, Ghulam N. Qazi, Ramesh K. Ganju, Mahmoud El-Tamer, Jaswant Singh, Ajit K. Saxena, Yashbir S. Bedi, Subhash C. Taneja, and Hari K. Bhat\***

Department of Environmental Health Sciences [A.G.D., H.K.B.], Mailman School of Public Health, Columbia University, New York, NY; Department of Surgery [M.E-T], College of Physicians and Surgeons, Columbia University, New York, NY; Department of Pathology, Ohio State University, Columbus, Ohio [RKG]; Indian Institute of Integrative Medicine [J.S., A.K.S., Y.S.B., S.C.T., G.N.Q.], Council of Scientific and Industrial Research Jammu-Tawi, India

### Abstract

Cancer is the second leading cause of death worldwide. Although great advancements have been made in the treatment and control of cancer progression, significant deficiencies and room for improvement remain. A number of undesired side effects sometimes occur during chemotherapy. Natural therapies, such as the use of plant-derived products in cancer treatment, may reduce adverse side effects. Currently, a few plant products are being used to treat cancer. However, a myriad of many plant products exist that have shown very promising anti-cancer properties *in vitro*, but have yet to be evaluated in humans. Further study is required to determine the efficacy of these plant products in treating cancers in humans. This review will focus on the various plant-derived chemical compounds that have, in recent years, shown promise as anticancer agents and will outline their potential mechanism of action.

### Keywords

Medicinal plants; natural products; ayurveda; cancer; alternative medicine

## 1. INTRODUCTION

Cancer remains one of the leading causes of morbidity and mortality globally. Amongst the non-communicable diseases, cancer is the second leading cause of death, after cardiovascular disease [1–4]. Cancer is responsible for one in eight deaths worldwide—more than AIDS, tuberculosis, and malaria together [5]. Overall cancer incidence and mortality are higher in North America, Australia, New Zealand and Western Europe compared to the rest of the world [6, 7]. In the United States, one in four deaths is attributed to cancer [8]. Globally, the number of cancer deaths is projected to increase from 7.1 million in 2002 to 11.5 million in 2030 [2].

© 2008 Bentham Science Publishers Ltd.

\*Address correspondence to this author at the Department of Environmental Health Sciences, Mailman School of Public Health, Columbia University, 60 Haven Avenue, B106, New York, NY 10032, Tel: 212-305-0528; Fax: 212-342-0450; hb2009@columbia.edu.

Chemotherapy is routinely used for cancer treatment. Since cancer cells lose many of the regulatory functions present in normal cells, they continue to divide when normal cells do not. This feature makes cancer cells susceptible to chemotherapeutic drugs. Approximately five decades of systemic drug discovery and development have resulted in the establishment of a large collection of useful chemotherapeutic agents. However, chemotherapeutic treatments are not devoid of their own intrinsic problems. Various kinds of toxicities may occur as a result of chemotherapeutic treatments. For example, 5-fluorouracil, a common chemotherapeutic agent, is known to cause myelotoxicity [9], cardiotoxicity [10] and has even been shown to act as a vasospastic agent in rare but documented cases [11]. Another widely used chemodrug, doxorubicin causes cardiac toxicity [12–14], renal toxicity [15], and myelotoxicity [16]. Similarly, bleomycin a well known chemotherapeutic agent, is known for its pulmonary toxicity [17–19]. In addition, bleomycin shows cutaneous toxicity [20]. Cyclophosphamide, a drug to treat many malignant conditions, has been shown to have bladder toxicity in the form of hemorrhagic cystitis, immunosuppression, alopecia and at high doses cardiotoxicity [21].

The toxicity of chemotherapeutic drugs sometimes creates a significant problem in the treatment of cancer using allopathy or established medicine. Various therapies have been propounded for the treatment of cancer, many of which use plant-derived products. There are four classes of plant-derived anticancer agents in the market today, the vinca alkaloids (vinblastine, vincristine and vindesine), the epipodophyllotoxins (etoposide and teniposide), the taxanes (paclitaxel and docetaxel) and the camptothecin derivatives (camptotecin and irinotecan). Plants still have enormous potential to provide newer drugs and as such are a reservoir of natural chemicals that may provide chemoprotective potential against cancer. Recently, Taneja and Qazi, have suggested a number of compounds from medicinal plants with potential anti-cancer activities [22].

This review will discuss some of the plant products that have recently been tested and may have potential in anticancer therapies. The possible mechanism of action of such plant products is also discussed.

## 2. MEDICINAL PLANTS AND CANCER

The anticancer properties of plants have been recognized for centuries. Isolation of podophyllotoxin and several other compounds (known as lignans) from the common mayapple (*Podophyllum peltatum*) ultimately led to the development of drugs used to treat testicular and small cell lung cancer [23]. The National Cancer Institute (NCI) has screened approximately 35,000 plant species for potential anticancer activities. Among them, about 3,000 plant species have demonstrated reproducible anticancer activity (data available at <http://www.ars-grin.gov/duke/>).

Many studies have focused on the chemoprotective properties of plants such as anticarcinogenic properties of *Abrus precatorius* on Yoshida sarcoma in rats, fibrosarcoma in mice and ascites tumor cells [24]. Similarly, Dhar *et al.* have examined the anticancer properties of *Albizia lebbek* on sarcoma in mice and *Alstonia scholaris* on benzo[a]pyrene-induced forestomach carcinoma in humans [25]. Other plants that have

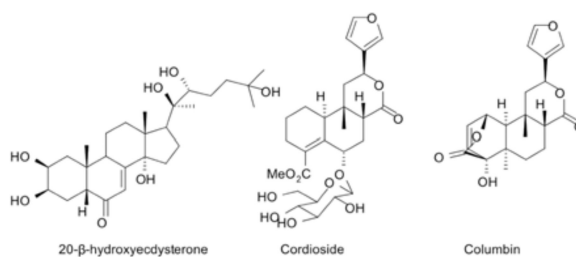
shown anticarcinogenic properties include *Anacardium occidentale* in hepatoma, *Asparagus racemosus* in human epidermoid carcinoma, *Boswellia serrata* in human epidermal carcinoma of the nasopharynx, *Erthyria suberosa* in sarcoma, *Euphorbia hirta* in Freund virus leukemia, *Gynandropis pentaphylla* in hepatoma, *Nigella sativa* in Lewis lung carcinoma, *Peaderia foetida* in human epidermoid carcinoma of the nasopharynx, *Picrorrhiza kurroa* in hepatic cancers, and *Withania somnifera* in various tumors [25].

The anticancer characteristics of a number of plants are still being actively researched and some have shown promising results. Some plants and plant products that have shown promise as anticancer agents are discussed in detail in the following sections.

### 2.1. *Tinospora cordifolia* (Wild) Miers

*Tinospora cordifolia*, also known as guduchi in Sanskrit, giloya in Hindi and heartleaf moonseed plant in English, is a bulky, smooth, climbing deciduous shrub lacking bristles (Fig. 1). The most commonly used part of the shrub is the stem, but roots are also known to contain important alkaloids. This shrub is commonly found in India, Myanmar, Sri Lanka and China.

According to ancient Ayurvedic lexicons, *T. cordifolia* is also referred to as “*amrita*”. The term “*amrita*” is ascribed to this plant due to its ability to impart youthfulness, vitality and longevity. The stem of *T. cordifolia* is used for general debility, dyspepsia, fever, urinary disease, and jaundice [26]. The extract of its stem is used in treating skin diseases [27]. There are certain curative properties of the root of *T. cordifolia* which allow for its use as antidote in snake bite, in combination with other drugs [28, 29]. *T. cordifolia* is well known in modern medicine for its adaptogenic, immunomodulatory and anti-oxidant activities [27, 30–33]. *T. cordifolia* is also known to have anti-inflammatory, anti-arthritic, anti-allergic properties [28, 34, 35]. This plant is also useful in treating skin diseases, vomiting, anemia, piles, chronic fever, and emaciation [36]. The methanol extract of *Tinospora* contains phenylpropanoids, norditerpene furan glycosides, diterpene furan glycosides and phytoecdysones [37]. The roots of *T. cordifolia* are also reported to contain other alkaloids like choline, tinosporin, columbin, isocolumbin, palmatine, tetrahydropalmatine and magnoflorine [38–40].



*T. cordifolia* effectively kills HeLa cells *in vitro*, suggesting its potential as an anticancer agent. A dose-dependent increase in cell death was observed in HeLa cells treated with *T. cordifolia* extract as compared to the controls [41]. The anticancer activity of dichloromethane extract of *T. cordifolia* in the mice transplanted with Ehrlich ascites carcinoma has been demonstrated. *T. cordifolia* extract showed a dose-dependent increase in

tumor-free survival with highest number of survivors observed at 50 mg/kg dose [42]. Chemical structures of some of the active constituents of *T. cordifolia* are given below.

## 2.2. *Ziziphus nummularia* Wight

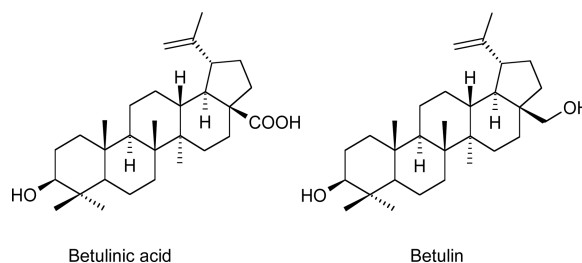
*Ziziphus nummularia*, also known as bhukamtaka sukhsharanphala in Sanskrit, harbor in Hindi and wild jujube in English, is a thorny small bush or a divaricating shrub, with pale-purplish stems and or grey-velvety stipular prickles in pairs. The different parts of the plant that are used for medicinal purposes are root, bark, stem, flowers and seeds. This shrub is generally found in India, Pakistan, Afghanistan, Egypt, Iran, Iraq, and Israel.

Betulin and betulinic acid (chemical structures shown on next page) are present within the bark and stem of *Z. nummularia* and have been shown to have antitumor activity [43]. Betulinic acid glycosides produce differential cytotoxicity, such that cancer cell lines are more sensitive than normal cells [44]. Similarly, betulinic acid, a naturally occurring pentacyclic triterpenoid, shows selective cytotoxicity against a variety of tumor cell lines [45]. Betulinic acid has been suggested to induce apoptosis by generation of reactive oxygen species, inhibition of topoisomerase I, activation of the mitogen activated protein kinase (MAP kinase) cascade, inhibition of angiogenesis, and modulation of pro-growth transcriptional activators and aminopeptidase-N activity [45]. Furthermore, betulinic acid has been shown to induce apoptosis by a p53- and CD95-independent mechanism [45]. These mechanisms may be responsible for the ability of betulinic acid to effectively kill cancer cells that are resistant to other chemotherapeutic agents [45].

It has been shown that combined treatment of betulinic acid and anticancer drugs, act in concert, to induce loss of mitochondrial membrane potential and the release of cytochrome *c* and second mitochondria derived activator of caspase (Smac) from mitochondria [46]. These changes are suggested to result in the activation of caspases and induce apoptosis. Notably, betulinic acid augments the anticarcinogenic effect of different cytotoxic compounds of different modes of action (for example, doxorubicin, cisplatin, taxol, or actinomycin D) [46]. Importantly, betulinic acid potentiates the apoptotic effect of anticancer drugs in different tumor cell lines, including p53 mutant cells, as well as primary tumor cells, but not in human fibroblasts indicating some tumor specificity [46].

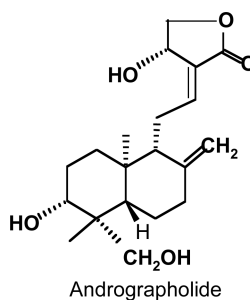
## 2.3. *Andrographis paniculata* (Burm. F.) Nees

*Andrographis paniculata*, commonly known as bhunimba and kalmegha in Sanskrit, kiryat in Hindi and the king of bitters and chiretta in English, is found in India and Sri Lanka (Fig. 2). The parts of the plant generally used for medicinal purposes are the roots and the leaves. *A. paniculata* extract contains diterpenes, flavonoids and stigmaterols [47]. The primary medicinal component of *Andrographis* is the diterpene andrographolide (chemical structure shown below). Andrographolide, described as a "diterpene lactone" due to its ring like structure, has a very bitter taste and has a colorless crystalline appearance. *Andrographis* leaves contain the highest concentration of andrographolide (~ 2.25%), while the seeds contain the lowest [47].



*A. paniculata* is used in the treatment of wide variety of conditions such as jaundice, cholestasis and as an antidote for hepatotoxins [48–50]. Its anti-HIV activity has also been reported [51]. Studies conducted on mice have shown that *A. paniculata* is a potent stimulator of the immune system and that it activates both the antigen-specific and non-specific immune responses [52]. Due to its ability to activate both types of immune response, *A. paniculata* is a potent chemoprotective agent and is effective against a variety of infectious and oncogenic agents [52]. Andrographolide shows cytotoxic activity against a variety of cancer cells [53]. For example, andrographolide exerts cytotoxic effects against KB human epidermoid cancer cells, P388 lymphocytic leukemia cells, MCF-7 breast cancer cells and HCT-116 colon cancer cells [54]. Further, andrographolide causes growth inhibition in the colon cancer cell line HT 29, enhances the growth and division of human peripheral blood lymphocytes and exerts pro-differentiative effects on the mouse myeloid leukemia M1 cell line [53, 55].

Alcoholic extract of *A. paniculata* has been shown to cause a significant increase in the activities of glutathione-S-transferase (GST), DT-diaphorase (DTD), superoxide dismutase (SOD) and catalase, differentially in the lung, liver, kidney and forestomach [56]. It also causes a decrease in the activity of lactate dehydrogenase (LDH) and malondialdehyde (MDA) [56–59]. Andrographis also results in alterations in the level of glutathione (GSH) [56], and GSH significantly contributes to its function of detoxifying the xenobiotics which may play a causative role in the carcinogenic process [60]. A major chemical constituent of *A. paniculata*, andrographolide has also shown significant anticancer and immunostimulatory activities. The *in vivo* results conducted in immuno-competent Swiss albino mice, demonstrated that andrographolide significantly inhibits the cancer cell proliferation without showing any signs of toxicity in mice, even at relatively high doses [61].

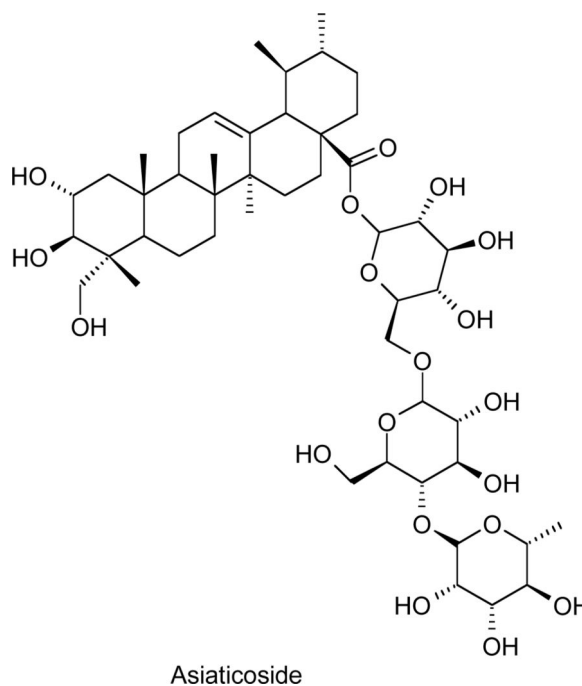


#### 2.4. *Centella asiatica* Linn

*Centella asiatica*, known as mandukaparni in Sanskrit, brahmamanduki in Hindi and asiatic pennywort in English, is another plant that has shown potential as an anticancer agent. This

plant is commonly found in India, Australia, Pacific Islands, New Guinea, Malaysia, and Iran. The whole plant or its leaves are being traditionally used for their therapeutic properties. Partially purified fractions of *C. asiatica*, dose-dependently inhibited the proliferation of transformed cell lines, including Ehrlich ascites tumor cells and Dalton's lymphoma ascites tumor cells [62]. However, practically no toxic effects were detected in normal human lymphocytes [62]. Partially purified fractions of *C. asiatica* also significantly suppressed the proliferation of mouse lung fibroblast cells in long-term culture. Oral administration of *C. asiatica* extracts slowed the development of solid and ascites tumors and increased the total life span of tumor-bearing mice [62]. The mechanism underlying the antitumor activity of *C. asiatica* is suggested to be a direct inhibition of DNA synthesis [62].

Pretreatment with *C. asiatica* is protective against radiation-induced liver damage [63, 64]. Pretreatment with *C. asiatica* significantly increases the survival time of irradiated animals [63]. *C. asiatica* extract contains a number of compounds such as asiaticoside, hydrocotyline, vallerine, pectic acid, sterol, stigmasterol, flavonoids, thankunosides [65] and ascorbic acid [64]. *C. asiatica* is an inhibitor of lipid peroxidation in various organs such as liver, lung, brain, heart, kidney, and spleen as well as in serum [66]. In addition, it exhibits anti-elastase activity and acts as a free radical scavenger [67]. *C. asiatica* reduces the level of total ATPase,  $Mg^{+2}$  ATPase,  $Na^{+}-K^{+}$  ATPase, and increases the level of  $Ca^{+}$  ATPase [66]. These processes are suggested to defend the tissue against peroxidation reaction and thus protects it against cell damage [66]. Oral consumption of leaves of *C. asiatica* have been shown to provide protection against oxidative damage [68]. Chemical structure of asiaticoside, a major component of *C. asiatica* is shown below.

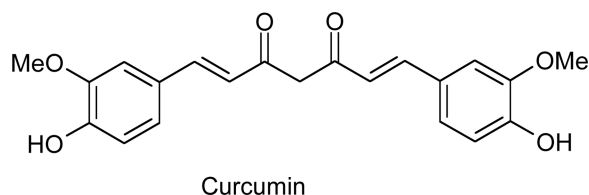


## 2.5. *Curcuma longa* Linn

*Curcuma longa* is popularly known as turmeric in English, haridra in Sanskrit and haldi in Hindi. The rhizome of the plant is traditionally used in cooking (Fig. 3). The active ingredient of this plant is curcumin (diferuloylmethane, chemical structure shown below), a polyphenol derived from the rhizome of the plant [69]. Turmeric is used for both cancer prevention and treatment [70]. The anticancer potential of curcumin is associated with its ability to inhibit proliferation in a wide variety of tumor cell types [71, 72]. The anti-proliferative properties of curcumin may be related to its ability to down-regulate the expression of a number of genes, including NF-kappa B, Activator Protein 1 (AP-1), Epidermal growth receptor 1 (EGR-1), cyclooxygenase 2 (COX2), lysyl oxidase (LOX), nitric oxide synthase (NOS), matrix metalloproteinase 9 (MMP-9), and tumor necrosis factor (TNF) [71–73]. Moreover, turmeric reduces the expression of various chemokines, cell surface adhesion molecules, cyclins and growth factor receptors, including epidermal growth factor receptor (EGFR), and human epidermal growth factor receptor 2 (HER2) [71]. In addition to its effects on gene expression, turmeric inhibits the activity of c-Jun N-terminal kinase, protein tyrosine kinases and protein serine/threonine kinases [71]. Turmeric has also been shown to inhibit tumor cell invasion and metastasis *in vitro* by reducing MMP-2 activity and by inhibiting HEp2 (epidermoid carcinoma cell line) cell invasion [74].

A number of studies have shown that curcumin induces apoptosis, inhibits proliferation and interferes with cell cycle progression [75–82]. Curcumin is suggested to exert its anti-proliferative and apoptotic effects by inhibition of protein tyrosine kinase activity, inhibition of protein kinase C activity, suppression of c-myc mRNA levels and up-regulation of B-cell lymphoma 2 (Bcl-2) mRNA expression [75]. Curcumin has been shown to cause apoptosis *in vitro* by bringing about a rapid decrease in mitochondrial membrane potential, release of cytochrome c, activation of caspases 3 and 9, and downregulation of anti-apoptotic proteins Bcl-XL and Inhibitor of Apoptosis Protein (IAP) [76, 79, 81]. In LNCaP prostate cancer cells, curcumin was shown to increase apoptosis by enhancing tumor necrosis factor-related apoptosis-inducing ligand (TRAIL), promoting cleavage of pro-caspases 3, 8 and 9, and inducing cytochrome c release [82]. Recent studies also suggest that heat shock proteins may play a role in the induction of apoptosis by curcumin [77, 78].

Curcumin and its derivatives demonstrated significant inhibition of VEGF and bFGF-mediated corneal neovascularization and directly inhibited angiogenesis *in vivo* and *in vitro* [83–90]. In addition to its antitumor effects *in vitro*, curcumin has been shown to prevent colon and gastric cancers in rodents [91]. The mechanism underlying the protective effect of curcumin is suggested to be related to its ability to inhibit the growth of several tumor-associated and angiogenesis-associated genes [84–90]. Additionally, curcumin has been shown to inhibit the growth of nearly nineteen different strains of *H. pylori* [92].



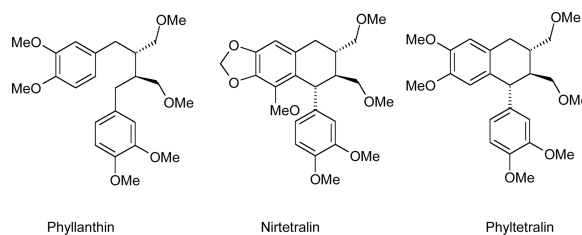


## 2.6. *Phyllanthus amarus* Schumach. & Thonn

*Phyllanthus amarus* is found in tropical Asia, especially in warmer parts of India and is known as bhumyamalaki in Sanskrit, jaramla in Hindi and stone breaker in English. The whole plant, leaves, roots and shoots are reportedly used for their medicinal values. *P. amarus* contains various lignans, flavanoids and tannins, and evidence suggests that *P. amarus* extract may exert antitumor effects [93]. Oral administration of *P. amarus* extract significantly increased the life span and reduced tumor size in mice bearing Dalton's lymphoma ascites (DLA) and Erlich ascites carcinoma (EAC) [93]. The chemoprotective properties of this plant may be related to its ability to inhibit metabolic activation of carcinogenic compounds, induce cell cycle arrest and interfere with DNA repair [93].

*P. amarus* plant extract has been reported to result in a significant decrease in n-nitrosodiethylamine (NDEA)-induced tumor incidence [94, 95]. Additionally, a decrease in tumor marker enzymes and liver injury markers has been reported [94]. *P. amarus* extract has been shown to inhibit DNA polymerase of hepatitis B virus and related hepatitis viruses [96, 97] and down regulates hepatitis B virus mRNA transcription and translation [98, 99]. The extract of *P. amarus* has been shown to inhibit aniline hydroxylase, a P-450 enzyme responsible for the activation of carcinogens [100]. The extract of *P. amarus* inhibited the activity of cdc 25 tyrosine phosphatase, which is a key enzyme involved in cell cycle regulation [100]. The extract of *P. amarus* resulted in the inhibition of the activity of topoisomerase I and II in *Sacchromyces cerviaca* mutant cell cultures [100]. *P. amarus* extract has also been reported to have anti-angiogenic effects in mice bearing Lewis lung carcinoma with evidence to interfere with the migration of vascular endothelial cells [101]

The lignan-rich fraction of the hexane extract of *P. amarus*, and the various purified lignans namely nirtetralin (NIRT), niranthrin (NIRA), phyllanthin (PHYLLA), phyltetralin (PHYLT) (chemical structures shown below) have been reported to be effective in inhibiting P-gp (P-glycoprotein) function *in vitro* [102]. Furthermore, these lignans, in combination with daunorubicin act as a Multiple Drug Resistance (MDR)-reversing agents [102].



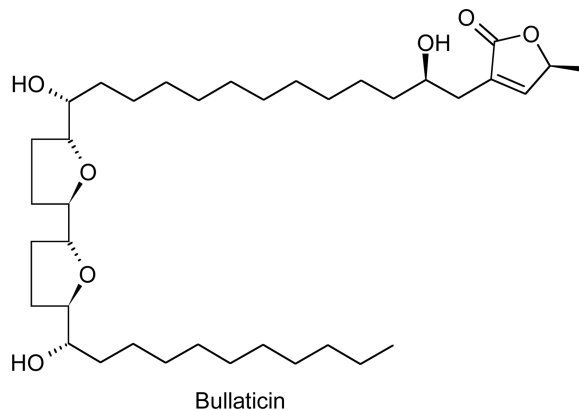
## 2.7. *Annona atemoya* Mabb./ *Annona muricata* Linn

*Annona atemoya/muricata* is a native of Caribbean, Central and South America. It is also commonly grown in South East Asia especially in eastern part of India. This plant is traditionally known as mamaphal in Hindi and sour-sop of America in English. The parts of the plant that are generally used for medicinal purposes are the root, bark, leaf and fruit.

The fruit of *A. atemoya* contains bullatacin (chemical structure shown below), an acetogenin known to have antitumor properties. Bullatacin induces chromatin margination and tumor

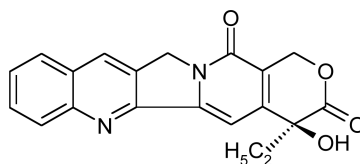


cell condensation, followed by apoptosis [103]. *A. atemoya* contains two annonuricins namely A and B, which have shown cytotoxicity in human solid tumor cell lines A-549 lung carcinoma, MCF-7 breast carcinoma, and HT-29 colon adenocarcinoma cell lines [104]. *A. atemoya* contains several other acetogenins that have also been shown to selectively induce cell death in tumor cells *in vitro* [105]. In particular, two annonaceous acetogenins were found to produce cell death in the human hepatoma cell line HepG2 and hepatoma 2.2.15 cells [106].



## 2.8. *Mappia foetida* Miers. / *Nothapodytes foetida* Miers

*Mappia foetida*/ *Nothapodytes foetida* is generally found in tropical countries (Fig. 4). The medicinal properties of *M. foetida* have recently gained international attention. The active component of *M. foetida* tree wood is camptothecin (chemical structure shown below), a potent chemotherapy drug used to treat leukemia [107]. Recent studies have indicated that an endophytic fungus which grows on this plant also produces the camptothecine [108]. Camptothecines have broad spectrum of antitumor activities both *in vitro* and *in vivo*. For example, camptothecines have been shown to be effective inhibitors of nucleic acid synthesis in HeLa cells and L-120 cells [109]. The anti-neoplastic activity of camptothecine has been attributed to its inhibitory action on the nuclear enzyme type-1 DNA topoisomerase (topo-1) [110]. This alkaloid as well as several semisynthetic or fully synthetic analogues, are in various stages of preclinical and clinical trials [110]. Irinotecan (7-ethyl-10-[4-(piperidino)-I-piperidinol] carbonyloxycamptothecine) is a new potent semi-synthetic derivative of camptothecine, which is active against ascites and solid mouse tumors and induces partial or complete remission of breast carcinoma in the xenograft model system [110]. A series of Phase II clinical trials have been conducted to assess the anticancer activity of camptothecines and their analogues. The Phase II trials have revealed an extensive range of activities against lymphoma, leukemia, and solid epithelial tumors [111]. Topotecan, another synthetic modification of 10-hydroxycamptothecine, has been shown to slow the growth of human colon cancer cells, rhabdomyosarcoma cells, and osteogenic sarcoma xenografts [110].



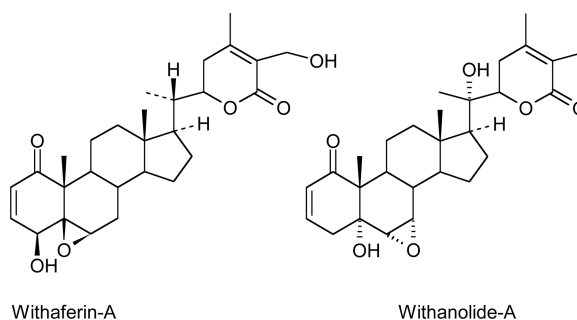
Camptothecine

## 2.9. *Withania somnifera* (Linn.) Dunal

*Withania somnifera* (Linn.) Dunal (Solanaceae) known as ashwagandha in Sanskrit and Hindi, winter cherry in English, is a small subtropical shrub (Fig. 5). The roots and leaves of *W. somnifera* have been used in the Indian traditional system of medicine Ayurveda, and the plant is marketed world-wide because of its medicinal properties. It is also one of the members of GRAS (generally regarded as safe) category of plants that has found several therapeutic uses [112]. *W. somnifera* extract is suggested to modulate a variety of biological responses [113]. Therefore, it has been extensively used in many indigenous preparations for its anti-ageing, aphrodisiac, cardiotonic, thyro-regulatory, anti-peroxidative, anti-inflammatory, antitumor, anti-stress, anti-oxidant, immuno-modulatory, hemopoietic, and rejuvenating properties [114, 115].

*W. somnifera* has been in use in the Indian traditional system of medicine for ages for its energy-promoting and anti-stress benefits [116]. It has been recently reported that Th1-immune up-regulation is a major effect of the root constituent withanolide A [115]. Withaferin A, another chemical constituent of *W. somnifera*, is distributed mostly in leaves and produces rapid apoptosis in cancer cells [114]. However, synthesis of these withanolides or their isolation from plants in therapeutic amounts has posed serious limitations for their effective utility in clinics. Scientists at Indian Institute of Integrative Medicine, Jammu, India, have devised a formulation, which offers a unique novelty where the root and leaf extracts of an elite variety of *W. somnifera* are mixed in a certain ratio to obtain a defined pharmaceutical composition rich in withanolide A and withaferin A [Indian Patent: 0202NF2006; Del 01321 dated 19-06-2007]. This *W. somnifera* formulation appears to offer a multi-modal action against cancer disease as evidenced by their current studies [117]. *W. somnifera* formulation has been shown to induce cell cytotoxicity in several human cancer cell lines [117]. The suggested mechanisms of cytotoxicity include activation of both intrinsic and extrinsic apoptosis signaling cascades, triggered by augmented generation of reactive oxygen species (ROS) and nitric oxide (NO) in cancer cells [117]. The cell signaling pathways by the *W. somnifera* formulation is suggested to be largely due to its high content of withaferin A [114]. Exposure of HL-60 cells to *W. somnifera* formulation caused up-regulation of apical death receptors and altered ratio of members of Bcl 2 family of proteins leading to downstream activation of caspase-3 and PARP cleavage, thereby producing nucleosomal DNA cleavage [117]. This formulation was effective in regressing tumors in experimental mice when compared with extracts similarly prepared from roots or leaves of *W. somnifera* [117]. Leaf extract at 150 mg/kg was highly toxic to mouse Sarcoma-180, Ehrlich and ascites tumor models while a comparable dose of *W. somnifera* formulation was highly effective in producing tumor regression by >50%; the root extract, however, was relatively poor in tumor regression [117]. The mixed formulation of *W.*

*somnifera* given at a 10–100 mg/kg body weight dose daily by oral route for 15 days increased the levels of immunoglobulins and DTH (delayed type hypersensitivity) response in SRBC (sheep red blood cell) challenged mice. It increased the levels of Th-1 cytokines, IL-2 and IFN-gamma together with T cell population, CD4<sup>+</sup>, CD8<sup>+</sup> and CD3<sup>+</sup>, and activated peritoneal macrophage functions after antigen challenge. This effect corroborated with Withanolide-A mediated Th-1 immune polarization [115]. *W. somnifera* formulation also up-regulated the levels of T cell population (CD3) in tumor-bearing mice together with increased expression of IFN-  $\gamma$  and IL-2 levels. Interestingly, *W. somnifera* formulation, at graded doses, remarkably increased the expression of CD40<sup>+</sup>/CD40L<sup>+</sup> in Ehrlich ascites tumor-bearing mice. Interestingly this formulation not only activated Th-1 type immune response, which is important in recognition of cancer cells and intracellular pathogens, but also simultaneously exhibited strong anticancer activity due largely to withaferin A content [114]. Chemical structures of withaferin A and withanolide A, the major components of *W. somnifera* are given below:

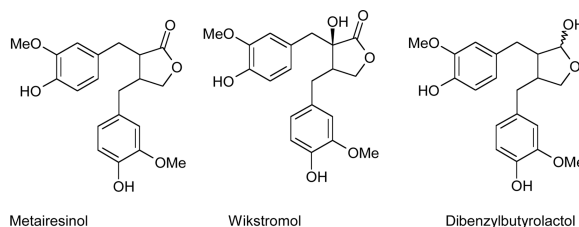


### 2.10. *Cedrus deodara* (Roxb. Ex. D. Don) G. Don

*Cedrus deodara* (deodar cedar, himalayan cedar, or deodar in Hindi, devdar in Sanskrit, xue song in Chinese) is native to the western Himalaya (Hind Kush mountains), eastern Afghanistan, northern Pakistan, northwest and northcentral India, southwestern Tibet and western Nepal [118]. It is widely grown as an ornamental tree and planted in parks and large gardens for its drooping foliage. The name “deodar” is derived from modern Indian language derivatives of the Sanskrit name “devdar”, meaning “timber of the gods”.

Bark of the *Cedrus deodara* is a good remedy in remittent and intermittent fevers, inflammation, rheumatoid arthritis, cancer, ulcers, diarrhea and dysentery [119]. The oleo-resin from deodar is valued as a cure for skin diseases. Cedarwood oil is used as an expectorant, catarrhal of respiratory tract, anti-ulcer, arthritis pain reliever, anti-diabetic, anti-inflammatory, and to cure skin diseases [117, 118]. Cedarwood oil is also used in fragrance applications such as soap perfumes, household sprays, floor polishes and insecticides. No toxic effect was seen on human body with *Cedrus deodara* consumption. Resins obtained from the tree are used as anti-obesity agents. It is also effective in clearing the respiratory tract and reduces cough and cold. In India, *Cedrus deodara* oil has been shown to possess insecticidal and antifungal properties and to have some potential for control of fungal deterioration of spices during storage [120]. A lignan composition extracted from the stem wood of *Cedrus deodara* exhibited cytotoxicity to a panel of human cancer cell lines [121]. It also induced tumor regression in murine models [122]. This lignan

composition called lignin mixture consisted of (–)-wikstromal (75–79%), (–)-matairesinol (9–13%) and dibenzylbutyrolactol (7–11%, chemical structures given below) (US Patent 6,649,650). It inhibited Molt-4 cell proliferation with 48 hour  $IC_{50}$  of ~15  $\mu\text{g/ml}$ , increased sub-G0 cell fraction with no mitotic block, produced apoptotic bodies and induced DNA ladder formation. Flow cytometric analysis of annexinV-FITC/PI-stained cells showed time-related increase in apoptosis and post-apoptotic necrosis. All these biological end-points indicated cell death by apoptosis. Further, initial events involved massive nitric oxide (NO) formation within 4h with subsequent late appearance of peroxides in cells; measured by flow cytometry using specific fluorescent probes [121, 122]. Persistently high levels of NO and peroxide appeared to decrease mitochondrial membrane potential ( $\psi_m$ ) which was recovered by cyclosporine A in Molt-4 cells. The lignan mixture caused 2-fold activation of caspase-3 in Molt-4, and 5-fold activation in HL-60 cells [121]. Also, caspases-8 and –9 were activated in HL-60 cells. Ascorbate suppressed the enhanced caspase activities indicating a prooxidant effect of lignan mixture. Further, caspase-3 activation correlated with NO generation that was partially impaired by nitric oxide synthase (NOS) inhibitors and ascorbate, suggesting a role of prooxidant species in caspase-3 activation. The lignan mixture produced no cytotoxicity in primary rat hepatocyte culture at the concentrations used. These studies indicated that the lignan mixture mediated early NO formation, lead to caspases activation, peroxide generation and mitochondrial depolarization which may be responsible for mitochondrial-dependent and -independent apoptotic pathways involved in the killing of leukemia cells by the lignan mixture [121].

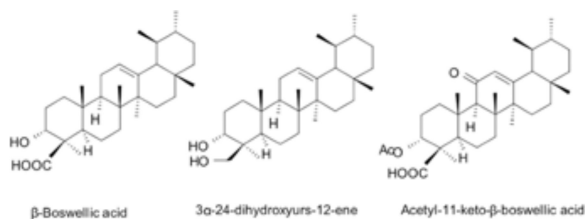


### 2.11. *Boswellia serrata* Roxb

*Boswellia serrata* is a deciduous middle sized tree, which is most commonly found in tropical parts of Asia and Africa (Fig. 6). The gum from the plant is tapped from incisions made on the trunk of the tree, which is then stored in specially made bamboo baskets and converted into different grades of material according to flavor, color, shape and size. A number of pharmacological properties of the gum have been documented [123].

An isomeric triterpenediol comprising of isomeric mixture of 3 $\alpha$ , 24-dihydroxyurs-12-ene and 3 $\alpha$ , 24-dihydroxyolean-12-ene from *Boswellia serrata* induces apoptosis in various cancer cells [124–133]. It inhibited cell proliferation with  $IC_{50}$  of ~12  $\mu\text{g/ml}$  and produced apoptosis as measured by various biological end points e.g. increased sub-G0 DNA fraction, DNA ladder formation, enhanced AnnexinV-FITC binding of the cells. Further, initial events involved excessive ROS and NO formation, which were significantly inhibited by their respective inhibitors. Persistent high levels of NO and ROS caused Bcl-2 cleavage and translocation of Bax to mitochondria, which lead to loss of mitochondrial membrane potential ( $\psi_m$ ), and release of cytochrome c and other factors in the cytosol [124]. These

events were associated with decreased expression of survivin and ICAD (inhibitor of caspase activated DNAses) with attendant activation of caspases leading to PARP cleavage. Furthermore, triterpenediol upregulated the expression of cell death receptors DR4 (death receptor 4) and TNF-R1 (tumor necrosis factor receptor 1) level, leading to caspase-8 activation. These studies thus demonstrate that triterpenediol produces oxidative stress in cancer cells that triggers self-demise by ROS and NO regulated activation of both the intrinsic and extrinsic signaling cascades [134]. Chemical structures of the major chemical components of *B. serrata* are shown below.



### 3. CONCLUSION

Any practical solution to controlling the initiation and progression of cancer is of paramount importance. The use of medicinal plant products to manage or arrest the carcinogenic process provides an alternative to the use of conventional allopathic medicine for treatment of the disease. Many herbs have been evaluated in clinical studies and are currently being investigated to understand their tumouricidal properties against various cancers [135] and these have been summarized in Table 1.

There seem to be emerging approaches, that include, not only cytotoxic approaches but also molecular management of cancer pathophysiology. The goal in these integrative approaches, which extend beyond eradicating the affected cells, is to control the cancer phenotype. A number of plant-derived products have shown promise in anticancer therapies. Attempts have been made to characterize the effectiveness of single constituents isolated from natural products as chemo-preventive agents. Keeping that perspective in mind, ayurveda which uses a holistic approach in the treatment of disease may provide effective alternative to individual plant isolates in the treatment of cancer. The ayurvedic system of medicine incorporates herbs into its treatment regimens for a number of diseases and disorders. The well known texts of Charaka Samhita and Sushruta Samhita date back to approximately 1000 B.C. and document the use of plant products in treatment of disease [reviewed in 135]. *Charaka* and *Sushruta* samhitas, two well-known Ayurvedic classics, describe cancer as inflammatory or non-inflammatory swelling and mention them as either *Granthi* (minor neoplasm) or *Arbuda* (major neoplasm). *T. cordifolia* for example is known for its various medicinal properties including anti-inflammatory, anti-arthritis and anti-allergic properties [28, 34, 35]. *In vitro* experiments have shown anticancer potential for *T. cordifolia* [42]. *A. paniculata* extracts have been shown to have anti-oncogenic properties [52–54]. Oral administration of *C. asiatica* extracts slowed the development of solid and ascites tumors and increased the total life span of tumor-bearing mice [62]. Turmeric has also been shown to inhibit tumor cell invasion and metastasis *in vitro* [74]. Oral administration of *P. amarus* extract significantly increased the life span and reduced tumor size in mice bearing Dalton's

lymphoma ascites (DLA) and Erlich ascites carcinoma (EAC) [93]. Thus, there is evidence that plant products can have antitumor properties with relatively few side effects. More research on plants and plant-derived chemicals may result in the discovery of potent anticancer agents.

## Acknowledgments

This work was supported by National Institute of Health Grants CA 109551 and P30 ES 09089, and by the Jean Sindab/ Avon Breast Cancer Foundation Grant to HKB.

## ABBREVIATIONS

<b>Smac</b>	Second mitochondria derived activator of caspase
<b>VP16</b>	Oral etoposide for brain tumor
<b>Diferuloylmethane</b>	Scientific name for curcumin
<b>HEp2</b>	Epidermoid carcinoma cell line
<b>DIABLO</b>	Direct inhibitor of apoptosis binding protein with low pI
<b>P-gp</b>	P-glycoprotein
<b>DTH</b>	Delayed type hypersensitivity
<b>SRBC</b>	Sheep red blood cells
<b>AIF</b>	Apoptosis inducing factor
<b>DR4</b>	Death receptor-4
<b>TNF-R1</b>	Tumor necrosis factor receptor 1
<b>ICAD</b>	Inhibitor of caspase activated dnases
<b>NIRT</b>	Nirtetralin
<b>NIRA</b>	Niranthrins
<b>PHYLLA</b>	Phyllanthin
<b>PHYLT</b>	Phyltetralin (lignans isolated from Phyllanthus)
<b>IIM</b>	Indian Institute of Integrative Medicine

## REFERENCES

1. W.H.O. Preventing chronic diseases: a vital investment, in WHO press. Geneva: WHO Global report; 2005.
2. Mathers CD, Loncar D. PLoS Med. 2006; 3(11):442.
3. Lopez AD, Mathers CD, Ezzati M, Jamison DT, Murray CJ. Lancet. 2006; 367(9524):1747–1757. [PubMed: 16731270]
4. Hoyert DL, Heron MP, Murphy SL, Kung H-C. Natl. Vital Stat. Rep. 2006; 54(13):1–120. [PubMed: 16689256]
5. Sener SF, Grey N. J. Surg. Oncol. 2005; 92(1):1–3. [PubMed: 16180214]
6. Parkin DM. Oncogene. 2004; 23(38):6329–6340. [PubMed: 15322508]
7. Parkin DM, Bray F, Ferlay J, Pisani P. Int. J. Cancer. 2001; 94(2):153–156. [PubMed: 11668491]

8. Jemal A, Siegel R, Ward E, Murray T, Xu J, Thun MJ. CA: Cancer J. Clin. 2007; 57(1):43–66. [PubMed: 17237035]
9. Macdonald JS. Oncology. 1999; 13(7 Suppl 3):33–34. [PubMed: 10442356]
10. Rexroth G, Scotland V. Med. Klin. 1994; 89(12):680–688.
11. Rastogi N, Chag M, Ayyagari S. Int. J. Cardiol. 1993; 42(3):285–287. [PubMed: 8138338]
12. Aviles A, Arevila N, Diaz Maqueo JC, Gomez T, Garcia R, Nambo MJ. Leuk. Lymphoma. 1993; 11(3–4):275–279. [PubMed: 8260898]
13. Leo E, Arletti R, Forni F, Cameroni R. Farmaco. 1997; 52(6–7):385–388. [PubMed: 9372590]
14. Kilickap S, Akgul E, Aksoy S, Aytemir K, Barista I. Europace. 2005; 7(3):227–230. [PubMed: 15878560]
15. Manil L, Couvreur P, Mahieu P. Pharm. Res. 1995; 12(1):85–87. [PubMed: 7724492]
16. Gibaud S, Andreux JP, Weingarten C, Renard M, Couvreur P. Eur. J. Cancer. 1994; 30A(6):820–826. [PubMed: 7917543]
17. Adamson IY. Environ. Health Perspect. 1976; 16:119–125. [PubMed: 65280]
18. Parvinen LM, Kilku P, Makinen E, Liukko P, Gronroos M. Acta Radiol. Oncol. 1983; 22(6):417–421. [PubMed: 6203333]
19. Karam H, Hurbain-Kosmath I, Housset B. Toxicol. Lett. 1995; 76(2):155–163. [PubMed: 7536963]
20. Cohen IS, Mosher MB, O'Keefe EJ, Klaus SN, De Conti RC. Arch. Dermatol. 1973; 107(4):553–555. [PubMed: 4121404]
21. Fraiser LH, Kanekal S, Kehrer JP. Drugs. 1991; 42(5):781–795. [PubMed: 1723374]
22. Taneja, SC.; Qazi, GN. *Bioactive Molecules in Medicinal Plants: A perspective in their therapeutic action*, in Drug discovery and development. Chorghade, MS., editor. John Wiley and Sons, Inc; 2007. p. 1-50.
23. Pettit GR, Tan R, Ichihara Y, Williams MD, Doubek DL, Tackett LP, Schmidt JM, Cerny RL, Boyd MR, Hooper JN. J. Nat. Prod. 1995; 58(6):961–965. [PubMed: 7673945]
24. Reddy VV, Sirsi M. Cancer Res. 1969; 29(7):1447–1451. [PubMed: 5799161]
25. Dhar ML, Dhar MM, Dhawan BN, Mehrotra BN, Ray C. Ind. J. Exp. Biol. 1968; 6(4):232–247.
26. Singh SS, Srivastava S, Gupta VS, Patro B, Ghosh AC. Ind. J. Pharmacol. 2003; 35:83–91.
27. Diwanay S, Chitre D, Patwardhan B. J. Ethnopharmacol. 2004; 90(1):49–55. [PubMed: 14698508]
28. Nadkarni, KM.; Nadkarni, AK. *Indian Materia medica*. 3rd edition ed. Vol. Vol. 1. Bombay: Popular Prakashan Pvt. Ltd; 1976. p. 1220-1221.
29. Zhao TF, Wang XK, Rimando AM, Che CT. Planta Med. 1991; 57(5):505. [PubMed: 1798808]
30. Mathew S, Kuttan G. J. Exp. Clin. Cancer Res. 1997; 16(4):407–411. [PubMed: 9505214]
31. Kapil A, Sharma S. J. Ethnopharmacol. 1997; 58(2):89–95. [PubMed: 9406896]
32. Singh N, Singh SM, Shrivastava P. Immunopharmacol. Immunotoxicol. 2004; 26(1):145–162. [PubMed: 15106739]
33. Nair PK, Rodriguez S, Ramachandran R, Alamo A, Melnick SJ, Escalon E, Garcia PI Jr, Wnuk SF, Ramachandran C. Int. Immunopharmacol. 2004; 4(13):1645–1659. [PubMed: 15454117]
34. Chopra, RN.; Chopra, LC.; Handa, KD.; Kapur, LD. *Indigenous Drugs of India*. 2nd edition. Calcutta: Dhar VN. and sons; 1956. p. 426-428.
35. Kirtikar, KR.; Basu, BD. *Indian Medicinal Plants*. 2nd edition ed. Vol. Vol. 1. Dehradun, India: International Book Distributors; 1987. p. 77-80.
36. Diwanay S, Chitre D, Patwardhan B. J. Ethnopharmacol. 2004; 90(1):49–55. [PubMed: 14698508]
37. Gangan VD, Sipahimalani AT. Ind. J. Chem. 1997; 36B:787–792.
38. Sultana N, Lee NH. Phytother. Res. 2007; 21(12):1171–1176. [PubMed: 17661332]
39. Bisset NG. Planta Med. 1983; 48:225–229.
40. Pahadiya S, Sharma J. Phytother. Res. 2003; 17(5):552–554. [PubMed: 12748997]
41. Jagetia GC, Nayak V, Vidyasagar MS. Cancer Lett. 1998; 127(1–2):71–82. [PubMed: 9619860]
42. Jagetia GC, Rao SK. Biol. Pharm. Bull. 2006; 29(3):460–466. [PubMed: 16508146]



43. Sarek J, Kvasnica M, Urban M, Klinot J, Hajduch M. *Bioorg. Med. Chem. Lett.* 2005; 15(19): 4196–4200. [PubMed: 16051489]
44. Gauthier C, Legault J, Lebrun M, Dufour P, Pichette A. *Bioorg. Med. Chem.* 2006; 14(19):6713–6725. [PubMed: 16787747]
45. Eiznhamer DA, Xu ZQ. *Drugs.* 2004; 7(4):359–373.
46. Simone F. *Neoplasia.* 2005; 7(2):162–170. [PubMed: 15802021]
47. Siripong P, Preechanukool K, Picha P, Tunsuwan K, Taylor WC. *J. Sci. Soc. (Thailand).* 1992; 18:187–194.
48. Deng WL, Nie RJ, Liu JY. *Chin. Pharm. Bull.* 1982; 17:195–198.
49. Handa SS, Sharma A. *Ind. J. Med. Res.* 1990; 92B:276–283.
50. Visen PK, Shukla B, Patnaik GK, Dhawan BN. *J. Ethnopharmacol.* 1993; 40:131–136. [PubMed: 8133653]
51. Chang RS, Yeung HW. *Antivir. Res.* 1988; 9:163–176. [PubMed: 2840849]
52. Puri A, Saxena R, Saxena RP, Saxena KC, Srivastava V, Tandon JS. *J. Nat. Prod.* 1993; 56(7): 995–999. [PubMed: 8377022]
53. Kumar RA, Sridevi K, Kumar NV, Nanduri S, Rajagopal S. *J. Ethnopharmacol.* 2004; 92(2–3): 291–295. [PubMed: 15138014]
54. Jada SR, Subur GS, Matthews C, Hamzah AS, Lajis NH, Saad MS, Stevens MF, Stanslas J. *Phytochemistry.* 2007; 68(6):904–912. [PubMed: 17234223]
55. Matsuda T, Kuroyanagi M, Sugiyama S, Umehara K, Ueno A, Nishi K. *Chem. Pharm. Bull., (Tokyo).* 1994; 42(6):1216–1225. [PubMed: 8069972]
56. Singh RP, Bannerjee S, Rao A. *Phytother. Res.* 2001; 15:382–390. [PubMed: 11507728]
57. Guengerich FP. *Cancer Res.* 1988; 48:2946–2954. [PubMed: 3284639]
58. Ketterer B. *Mutat. Res.* 1988; 202:343–361. [PubMed: 3057366]
59. Miller EC. *Cancer Res.* 1988; 38:1497–1496.
60. Meister A. *J. Biol. Chem.* 1994; 269(13):9397–9400. [PubMed: 8144521]
61. Ajaya KR, Sridevi K, Vijaya KN, Nanduri S, Rajagopal S. *J. Ethnopharmacol.* 2004; 92(2,3):291–295. [PubMed: 15138014]
62. Babu TD, Kuttan G, Padikkala J. *J. Ethnopharmacol.* 1995; 48(1):53–57. [PubMed: 8569247]
63. Sharma J, Sharma R. *Phytother. Res.* 2002; 16(8):785–786. [PubMed: 12458490]
64. Sharma R, Sharma J. *Phytother. Res.* 2005; 19(7):605–611. [PubMed: 16161023]
65. Srivastava R, Kumar S. *Ind. J. Med. Arom. Plants.* 1997; 19:1049–1056.
66. Chandraprabha D, Murthy NK. *Ind. J. Nutr. Diet.* 1996; 33:74–79.
67. Rouillard-Guellec FRJ, Rakotarat SA, Rastsimamangs RP. *Acta Bot. Gallica.* 1997; 144:489–493.
68. Padma PR, Silambuchelvi K. *Ind. J. Nutr. Diet.* 1998; 35:1–3.
69. Pelletier VA. *J. Pharm.* 1985; 2:50.
70. Kuttan R, Bhanumathy P, Nirmala K, George MC. *Cancer Lett.* 1985; 29:197–202. [PubMed: 4075289]
71. Aggarwal BB, Kumar A, Bharti AC. *Anticancer Res.* 2003; 23(1A):363–398. [PubMed: 12680238]
72. Shao ZM, Shen ZZ, Liu CH, Sartippour MR, Go VL, Heber D, Nguyen M. *Int. J. Cancer.* 2002; 98(2):234–240. [PubMed: 11857414]
73. Surh YJ, Chun KS, Cha HH, Han SS, Keum YS, Park KK, Lee SS. *Mutat. Res.* 2001; 480–481:243–268.
74. Mitra A, Chakrabarti J, Banerji A, Chatterjee A, Das B. *J. Environ. Pathol. Toxicol. Oncol.* 2006; 25(4):679–690. [PubMed: 17341208]
75. Chen HW, Huang HC. *Br. J. Pharmacol.* 1998; 124(6):1029–1040. [PubMed: 9720770]
76. Jana NR, Dikshit P, Goswami A, Nukina N. *J. Biol. Chem.* 2004; 279(12):11680–11685. [PubMed: 14701837]
77. Rashmi R, Kumar S, Karunakaran D. *FEBS Lett.* 2003; 538(1–3):19–24. [PubMed: 12633846]
78. Rashmi R, Kumar S, Karunakaran D. *Carcinogenesis.* 2004; 25(2):179–187. [PubMed: 14604899]

79. Rashmi R, Kumar S, Karunakaran D. *Carcinogenesis*. 2004; 25(10):1867–1877. [PubMed: 15205359]
80. Duvoix A, Morceau F, Delhalle S, Schmitz M, Schneken-burger M, Galteau MM, Dicato M, Diederich M. *Biochem. Pharmacol.* 2003; 66(8):1475–1483. [PubMed: 14555224]
81. Woo JH, Kim YH, Choi YJ, Kim DG, Lee KS, Bae JH, Min DS, Chang JS, Jeong YJ, Lee YH, Park JW, Kwon TK. *Carcinogenesis*. 2003; 24(7):1199–1208. [PubMed: 12807727]
82. Deeb D, Xu YX, Jiang H, Gao X, Janakiraman N, Chapman RA, Gautam SC. *Mol. Cancer Ther.* 2003; 2(1):95–103. [PubMed: 12533677]
83. Arbiser JL, Rohan R, Van LR, Huang MT, Fischer C, Flynn E, Byers HR. *Mol. Med.* 1998; 4(6): 376–383. [PubMed: 10780880]
84. Kerbel R. *Nat. Rev. Cancer.* 2002; 2:727–739. [PubMed: 12360276]
85. Toi M, Matsumoto T, Bando H. *Lancet Oncol.* 2001; 2:667–673. [PubMed: 11902537]
86. Houck KA, Winer J, Cachianes G, Li B, Leung DW. *Mol. Endocrinol.* 1991; 5:1806–1814. [PubMed: 1791831]
87. Houck KA, Rowland AM, Winer J, Ferrara N. *J. Biol. Chem.* 1992; 267:26031–26037. [PubMed: 1464614]
88. Shima DT, D'Amore PA. *FEBS Lett.* 1995; 370:203–208. [PubMed: 7656977]
89. Shweiki D, Soffer D, Keshet E. *Nature.* 1992; 359:843–845. [PubMed: 1279431]
90. Niklinska W, Chyczewski L, Niklinski J. *Lung Cancer.* 2001; 34(suppl 2):S59–S64. [PubMed: 11720743]
91. Ikezaki S, Nishikawa A, Furukawa F, Kudo K, Nakamura H, Tamura K, Mori H. *Anticancer Res.* 2001; 21(5):3407–3411. [PubMed: 11848501]
92. Mahady GB, Pendland SL, Yun G, Lu ZZ. *Anticancer Res.* 2002; 22(6C):4179–4181. [PubMed: 12553052]
93. Rajeshkumar NV, Joy KL, Kuttan G, Ramsewak RS, Nair MG, Kuttan R. *J. Ethnopharmacol.* 2002; 81(1):17–22. [PubMed: 12020923]
94. Jeena KJ, Kuttan R. *Cancer Lett.* 1999; 136:11–16. [PubMed: 10211933]
95. Joy KL, Kuttan R. *J. Clin. Biochem. Nutr.* 1998; 24:133–139.
96. Venkateswaran PS, Milliman I, Blumberg BS. *Proc. Natl. Acad. Sci., USA.* 1987; 84:274–278. [PubMed: 3467354]
97. Blumberg BS, Millman I, Venkeateswaran PS, Thyagarajan SP. *Vaccine.* 1990; 8:S86–92. [PubMed: 2158192]
98. Lee CD, Ott M, Thyagarajan SP, Shfritz DA, Burk RD, Gupta S. *Europ. J. Clin. Invest.* 1996; 26:1069–1076. [PubMed: 9013081]
99. Ott M, Thyagarajan SP, Gupta S. *Europ. J. Clin. Invest.* 1997; 11:908–915. [PubMed: 9395786]
100. Rajeshkumar NV. *J. Ethnopharmacol.* 2000; 73:215–219. [PubMed: 11025159]
101. Huang S, Lee P, Yang S, Liao S, Chen T, Pang J. *Int. Immunopharmacol.* 2006; 6(6):870–879. [PubMed: 16644472]
102. Leite D, Kassuya C, Mazzuco T, Silvestre A, de Melo L, Rehder V, Rumjanek V, Calixto J. *Planta Med.* 2006; 15:1353–1358. [PubMed: 17054045]
103. Chiu HF, Chih TT, Hsian YM, Tseng CH, Wu MJ, Wu YC. *Biochem. Pharmacol.* 2003; 65(3): 319–327. [PubMed: 12527325]
104. Wu F-E, Gu Z-M, Zeng L, Zhao G-X, Zhang Y, McLaughlin JL, Sastrodihardjo S. *J. Nat. Prod.* 1995; 58:830–836. [PubMed: 7673926]
105. Chang FR, Wu YC. *J. Nat. Prod.* 2001; 64(7):925–931. [PubMed: 11473425]
106. Chang FR, Liaw CC, Lin C-Y, Chou CJ, Chiu HF, Wu YC. *Planta Med.* 2003; 69(3):241–246. [PubMed: 12677528]
107. Wall ME, Wani MC. *Ann. N. Y. Acad. Sci.* 1996; 803:1–12. [PubMed: 8993495]
108. Puri SC, Verma V, Amna T, Qazi GN, Spitteller M. *J. Nat. Prod.* 2005; 68(12):1717–1719. [PubMed: 16378360]
109. Wall ME, Wani MC. *Ann. Rev. Pharmacol. Toxicol.* 1977; 17:117–132. [PubMed: 326159]
110. Potmesil M. *Cancer Res.* 1994; 54(6):1431–1439. [PubMed: 8137244]

111. Slichenmyer WJ, Rowinsky EK, Donehower RC, Kaufmann SH. *J. Natl. Cancer Inst.* 1993; 85(4):271–291. [PubMed: 8381186]
112. Bolledulla J Y, Navindra P, Muraleedharan G. *Life Sci.* 2003; 74:125–132. [PubMed: 14575818]
113. Winters M. *Altern. Med. Rev.* 2006; 11:269–277. [PubMed: 17176166]
114. Malik F, Kumar A, Bhushan S, Khan S, Bhatia A, Suri K, Qazi GN, Singh J. *Apoptosis.* 2007; 12(11):2115–2133. [PubMed: 17874299]
115. Malik F, Singh J, Khajuria A, Suri KA, Satti NK, Singh S, Kaul MK, Kumar A, Bhatia A, Qazi GN. *Life Sci.* 2007; 80(16):1525–1538. [PubMed: 17336338]
116. Khan B, Bani S, Kaul A, Suri KA, Satti NK, Athar M, Qazi GN. *Int. Immunopharmacol.* 2006; 6(9):1394–1403. [PubMed: 16846833]
117. Singh, J. in Indo-US symposium on Botanicals organized by CSIR, IIM, Jammu & NCNPR, University of Mississippi. New Delhi: IGH, NASC complex; 2007. A Novel Standardized Herbal Formulation of *Withania somnifera* Useful for Anti-Cancer Land Th-1 Immune Upregulation. Indian Patent: 0202NF2006; Del 01321 dated 19.06.2007
118. Gulati, BC. *Oil of Cedrus deodara: Cultivation & Utilization of Aromatic plants.* Atal, ed; K, C., editors. Jammu: Regional Research Laboratory; 1989. p. 640-652.
119. Kirtikar, KR. *Indian Medicinal plants.* E, Blatter; C.J., KS, Mhasker, editors. Allahabad, India: Lalit Mohan Basu; 1933. p. 2390-2392.
120. Dikshit A DS. *Indian Perfumery.* 1982; 26(2–4):216–227.
121. Shashi S, Jaswant S, Madhusudana RJ, Kumar SA, Nabi QG. *Nitric Oxide.* 2006; 14:72–88. [PubMed: 16288976]
122. Singh SK, Shanmugavel M, Kampasi H, Singh R, Mondhe DM, Rao JM, Adwankar MK, Saxena AK, Qazi GN. *Planta Med.* 2007; 73(6):519–526. [PubMed: 17534788]
123. Mukherjee S, Mitra BN. *Ind. J. Pharmacol.* 1970; 32:48–49.
124. Bhushan S, Malik F, Andotra SS, Sethi VK, Kaur IP, Taneja S, Qazi GN, Singh J. *Apoptosis.* 2007; 12:1911–1926. [PubMed: 17636381]
125. Syrovets T, Büchele B, Laumonier Y, Zugmaier W, Genze F, Simmet T. *J. Biol. Chem.* 2005; 280(7):6170–6180. [PubMed: 15576374]
126. Liu J, Oredsson S, Badmaev V, Zhao W, Duan R. *Carcinogenesis.* 2002; 23(12):2087–2093. [PubMed: 12507932]
127. Zhao W, Liu H, Niggemann B, Fang Q, Zaenker KS, Han R. *Cancer Det. Prev.* 2003; 27(1):67–75.
128. Jing Y, Xia L, Nakaya K, Fang Q, Waxman S, Han R. *Leukemia Res.* 1999; 23(1):43–50. [PubMed: 9933134]
129. Glaser T, ; Groscurth P, Safayhi H, Sailer ER, Ammon HP, Schabet M, Weller M. *Br. J. Cancer.* 1999; 80:756–765. [PubMed: 10360653]
130. Hoernlein RF, Zehrer C, Niethammer D, Sailer ER, Simmet T, Dannecker GE, Ammon HP. *J. Pharmacol. Exp. Ther.* 1999; 288(2):613–619. [PubMed: 9918566]
131. Hostanska K, Saller R. *Anticancer Res.* 2002; 22(5):2853–2862. [PubMed: 12530009]
132. Shao Y, Chin CK, Badmaev V, Ma W, Huang MT. *Planta Med.* 1998; 64:328–331. [PubMed: 9619114]
133. Syrovets TB, Gedig E, Slupsky JR, Simmet T. *Mol Pharmacol.* 2000; 58:71–81. [PubMed: 10860928]
134. Kumar A, Malik F, Bhushan S, Sethi VK, Shahi AK, Kaur J, Taneja SC, Qazi GN, Singh J. *Chem. Biol. Interact.* 2008; 171(3):332–347. [PubMed: 18070620]
135. Balachandran P, Govindarajan R. *Pharmacol. Res.* 2005; 51(1):19–30. [PubMed: 15519531]
136. Singh RP, Rao AR. *Phytother. Res.* 2001; 15(5):382–390. [PubMed: 11507728]
137. Ikezaki S, Nishikawa A, Furukawa F, Kudo K, Nakamura H, Tamura K, Mori H. *Anticancer Res.* 2001; 21(5):3407–3411. [PubMed: 11848501]
138. Liu JJ, Oredsson S, Badmaev V, Duan RD. *Int. J. Mol. Med.* 2002; 10(4):501–505. [PubMed: 12239601]

139. Streffer JR, Schabet M, Dichgans J, Weller M. *Neurology*. 2001; 56:1219–1221. [PubMed: 11342692]



**Fig. (1).** *Tinospora cordifolia*, also known as guduchi in Sanskrit, giloya in Hindi and heartleaf moonseed plant in English, under cultivation at experimental fields of IIIM, Jammu, India. Inset: *T. cordifolia* – dry stems, source of crude drug.





**Fig. (2).** *Andrographis paniculata* commonly known as bhunimba and kalmegha in Sanskrit, kiryat in Hindi and the great king of bitters and chiretta in English, under cultivation at experimental fields of IIIM, Jammu, India.

Inset: *A.paniculata* – close up of flowering branch.



**Fig. (3).**  
*Curcuma longa* is popularly known as turmeric in English, haridra in Sanskrit and haldi in Hindi, under cultivation at experimental fields of IIM, Jammu, India.  
Inset: *C. longa* – dry rhizomes-a source of crude drug.





**Fig. (4).**  
*Mappia foetida* under cultivation at experimental fields of IIM, Jammu, India.  
Inset: *M. foetida* – close up of fruiting branch.



**Fig. (5).**  
*Withania somnifera* known as ashwagandha in Sanskrit and Hindi, winter cherry in English under cultivation at experimental fields of IIIM, Jammu, India.





**Fig. (6).**  
*Boswellia serrata* under cultivation at experimental fields of IIM, Jammu, India.

Table 1

## Anticancer Activities of Major Chemical Constituents of Medicinal Plants

Name of Plant	Major Chemical Constituents	In Vitro Effects	In Vivo Effects
<i>Tinospora cardifolia</i>	20 $\beta$ -hydroxyecdysterone, Cordioside, Columbin	Cytotoxic against HeLa cells [41]	Significant tumor regression and survival in mice with Ehrlich ascites carcinoma [42]
<i>Ziziphus nummularia</i>	Betulin, Betulinic acid	<ul style="list-style-type: none"> <li>a. Cytotoxic, selectively towards cancer cells compared to normal cells [44]</li> <li>b. Induces apoptosis through ROS generation, topoisomerase I inhibition and MAP kinase activation [45]</li> <li>c. Inhibits angiogenesis, modulates transcriptional activators, P53 and CD95 mediated cell death [45]</li> <li>d. Induces loss of mitochondrial membrane potential, Cyt.c and Smac release [46]</li> </ul>	
<i>Andrographis paniculata</i>	Andrographolide	<ul style="list-style-type: none"> <li>a. Alcoholic extract showed cytotoxicity against a panel of cancer cell lines [53, 54]</li> <li>b. Increases antioxidant enzymes SOD, Catalase, GST; decreases LDH and MDA [136]</li> </ul>	Andrographolide regresses tumor in mice [53]
<i>Centella asiatica</i>	Asiaticoside, hydrocotyline, vallerine, pectic acid, sterol, stigmasterol, flavonoids, thankunosides and ascorbic acid	<ul style="list-style-type: none"> <li>a. Leaf extract of <i>C. asiatica</i>, dose-dependently inhibits the proliferation of the transformed cell lines [62]</li> <li>b. antitumor activity due to inhibition of DNA synthesis [62]</li> </ul>	
<i>Curcuma longa</i>	Curcumin	<ul style="list-style-type: none"> <li>a. Inhibits cell proliferation in wide variety of cell lines [71, 72, 82]</li> <li>b. Downregulates NFk-B, AP-1, EGR-1, COX-2, LOX, NOs, MMP-9, TNF, Chemokine, EGFR, HER2 [71–73]</li> <li>c. Inhibits JNK pathway, serine/threonine kinase pathway [71]</li> <li>d. Inhibits metastasis by reducing MMP-2 [74]</li> <li>e. Induces apoptosis <i>in vitro</i> by decreasing mitochondrial membrane potential, release of Cyt c, activation of caspases 3 and 9, and downregulation of anti-apoptotic proteins Bel-</li> </ul>	<ul style="list-style-type: none"> <li>a. Reduces VGEF and bFGF mediated angiogenesis [84, 90]</li> <li>b. Prevents colon and gastric cancers in rodents [136, 137]</li> </ul>

Name of Plant	Major Chemical Constituents	In Vitro Effects	In Vivo Effects
		XL and Integrin associated Protein [76, 77, 81]	
<i>Phyllanthus amarus</i>	Nirtetralin, niranthrin, phyllanthin, phyltetralin	<ul style="list-style-type: none"> <li>a. Inhibits cell proliferation in different cancer cells, inhibits the activity of cdc 25 tyrosine phosphatase [100]</li> <li>b. Inhibits the activity of topoisomerase I and II in <i>Sacchromyces cerviacae</i> mutant cell cultures [100]</li> <li>c. Induces cell cycle arrest and interfere with DNA repair [93]</li> <li>d. Purified lignins act as reversal agent of MDR [102]</li> </ul>	<ul style="list-style-type: none"> <li>a. Oral administration of extract increases life span and reduced tumor size in mice bearing Dalton's lymphoma ascites (DLA) and Erlich ascites carcinoma (EAC) [93, 95]</li> <li>b. Plant extract decreases n-nitrosodiethylamine (NDEA)-induced tumor incidence [94, 95]</li> <li>c. Plant extract has anti-angiogenic effects in mice bearing Lewis lung carcinoma [101]</li> </ul>
<i>Annona atemoya</i>	Bullatacin	<ul style="list-style-type: none"> <li>a. Cytotoxic against tumor cell lines [104, 106]</li> <li>b. Induced cell death by chromatin margination and tumor cell condensation [103]</li> </ul>	
<i>Mappia foetida</i>	Camptothecin	<ul style="list-style-type: none"> <li>a. Effective inhibitors of nucleic acid synthesis in HeLa cells and L-120 cells [109]</li> <li>b. Inhibits topoisomerase-1 (topo -1) [110]</li> <li>c. slows growth of human colon cancer cells and rhabdomyosarcoma cells [110]</li> <li>d. A potent chemotherapy drug against leukemia [107]</li> </ul>	<ul style="list-style-type: none"> <li>a. Induces partial or complete remission of breast carcinoma in the xenograft model system [110]</li> <li>b. The Phase II trials against lymphoma, leukemia, and solid epithelial tumors [111]</li> </ul>
<i>Withania somnifera</i>	Withaferin A	<ul style="list-style-type: none"> <li>a. Induces apoptosis in variety of cancer cells through the rapid generation of ROS [115]</li> <li>b. Up-regulation of apical death receptors and altered ratio of members of Bcl2 family of proteins leading to downstream activation of caspase-3 and PARP cleavage thereby producing nucleosomal DNA cleavage in HL-60 cells [115]</li> <li>c. A combination of root and leaf extract of withaferin shows cytotoxicity against panel of cancer cell lines and induce apoptosis through RNOS generation [117]</li> </ul>	<ul style="list-style-type: none"> <li>a. <i>W. somnifera</i> formulation is highly effective in producing tumor regression by &gt;50% in EAC and EAT models [117],</li> <li>b. Enhances Th1 cytokine expression, CD3, increases T cell and CD40 expression in EAT mouse tumor model [117]</li> </ul>

Name of Plant	Major Chemical Constituents	<i>In Vitro</i> Effects	<i>In Vivo</i> Effects
<i>Cedrus deodara</i>	Lignans, Wikstromol, Matairesinol and dibenzyl butyrolactol	<ul style="list-style-type: none"> <li>a. Lignan extracts from the stem wood of <i>cedrus deodara</i> exhibits cytotoxicity in a panel of human cancer cell lines [121]</li> <li>b. Increases sub-G0 population in HL-60 and MOLT-4 cells [121]</li> <li>c. Induces DNA ladder formation and nitric oxide (NO) formation that leads to apoptosis [121]</li> </ul>	Shows tumor regression in murine models [122]
<i>Boswellia serrata</i>	Triterpenic acids	<ul style="list-style-type: none"> <li>a. Induces apoptosis in various cancer cell lines [125–131,138]</li> <li>b. Inhibits DNA synthesis and cell growth of HL-60 [132]</li> <li>c. Inhibits topoisomerase I and II [98]</li> </ul>	Effective against brain tumors [139]