

Research Article

Pharmacokinetics of Two Alkaloids after Oral Administration of *Rhizoma Coptidis* Extract in Normal Rats and Irritable Bowel Syndrome Rats

Zipeng Gong,¹ Ying Chen,¹ Ruijie Zhang,¹ Yinghan Wang,^{1,2}
Qing Yang,¹ Yan Guo,¹ Xiaogang Weng,¹ Shuangrong Gao,¹ Hailin Wang,¹
Xiaoxin Zhu,¹ Yu Dong,³ Yujie Li,¹ and Yajie Wang¹

¹Institute of Chinese Materia Medica, China Academy of Chinese Medical Sciences, No. 16, Dongzhimen Nei Nanxiao Road, Dongcheng District, Beijing 100700, China

²Institute of Chinese Materia Medica, Chengde Medical University, Chengde 067000, China

³Guang'an Men Hospital, China Academy of Chinese Medical Sciences, No. 5, Beixiange Road, Xicheng District, Beijing 100053, China

Correspondence should be addressed to Xiaoxin Zhu; zhuxiaoxin@icmm.ac.cn and Yu Dong; dongyu250541@sina.com

Received 30 May 2014; Revised 8 July 2014; Accepted 13 July 2014; Published 28 August 2014

Academic Editor: Shilin Chen

Copyright © 2014 Zipeng Gong et al. This is an open access article distributed under the Creative Commons Attribution License, which permits unrestricted use, distribution, and reproduction in any medium, provided the original work is properly cited.

A comparative pharmacokinetic study of berberine and palmatine after oral administration of *Rhizoma Coptidis* extract (96 mg/kg, containing berberine 22 mg/kg and palmatine 5 mg/kg based on body weight) was performed in normal and postinflammation irritable bowel syndrome (PI-IBS) rats, induced by intracolonic instillation of acetic acid and restraint stress. Quantification of berberine and palmatine in rat plasma was achieved by using a sensitive and rapid UPLC-MS/MS method. Plasma samples were collected at 13 different time points and the pharmacokinetic parameters were analyzed by WinNonlin software. The significant differences in the pharmacokinetic behaviors, such as C_{max} , $AUC_{(0-t)}$, V_d/F , and CL/F , of berberine and palmatine were found between normal and PI-IBS model rats. The results indicated that PI-IBS pathological conditions in rats could alter the pharmacokinetic behavior of drug. Preclinical pharmacokinetic studies are usually carried out on healthy animals. However, we should pay more attention to the fact that the change of pharmacokinetic behavior plays an important role on efficacy. It is essential to investigate the pharmacokinetics of the drug in disease status.

1. Introduction

Irritable bowel syndrome (IBS) is a chronic functional digestive tract disease, whose symptoms mainly involve not only abdominal pain or distention and abnormal defecation, but also psychological symptoms including anxiety and depression [1]. Postinflammation irritable bowel syndrome (PI-IBS) has been defined as an acute onset IBS symptoms (by Rome criteria) that develop after the individual, who has not previously met the Rome criteria, experiences a gastrointestinal infection with two or more of the following characteristics: fever, vomiting, diarrhea, or a stool culture positive for an infectious agent [2, 3]. However, the pathogenesis of PI-IBS is still unclear, which restrains the development of proper models and drugs for PI-IBS.

Rhizoma Coptidis (RC), known as Huang Lian, was officially recognized in the *Chinese Pharmacopoeia* [4] and has been reported to exert a number of pharmacological actions including antispasmodic [5], anti-Alzheimer's disease [6], hypolipidemic [7], anti-inflammatory [8], antitumor [9], and antibacterial [10]. In addition it was described to ameliorate radiation-induced skin injury [11]. Moreover, RC is also used to treat syndromes including abdominal pain and diarrhea [12], including PI-IBS. RC mainly consists of various alkaloids, including berberine, palmatine, coptisine, and epiberberine [13]. Berberine is an important and typical constituent in RC, which possesses a variety of activities including antitumor [14], anti-inflammation [15], and antiatherosclerosis and has also been used to treat infectious diarrhea [16]. The

other important constituent of RC is palmatine, which was reported to present some pharmacological effects such as liver-protective and cardiovascular protective effects [17, 18].

In the previous study, we found that the pharmacokinetic profiles of berberine after oral administration of hydrochloride berberine could be significantly altered in PI-IBS rats [19]. Compared with the control group, $AUC_{(0-t)}$ significantly increased in the PI-IBS group while CL/F considerably decreased. RC is a fundamental herb of traditional Chinese medicine prescriptions used to treat PI-IBS and its side effect is less than the pure berberine. Therefore, in the current study we compared the pharmacokinetics of berberine and palmatine in rat plasma after oral administration of RC extraction in normal and PI-IBS rats using WinNonlin software.

2. Materials and Methods

2.1. Materials. *Rhizoma Coptidis* is the dried rhizome of *Coptis chinensis* Franch, which was purchased from a local store (Sichuan, China) and identified by Professor Jinda Hao, a botanist and professor at the Institute of Chinese Materia Medica, China Academy of Chinese Medical Sciences. The voucher specimen (no. 110926) has been preserved in our laboratory. Berberine chloride with the purity of 86.7% and palmatine chloride with the purity of 86.1% were obtained from the National Institute for the Control of Pharmaceutical and Biological Products (Beijing, China). Methanol and acetonitrile of chromatographic grade were from Fisher Co., Ltd. (Waltham, USA). Formic acid was obtained from Merck KGaA Co. (Darmstadt, Germany). Deionized water purified by a Milli-Q water purification system (Milford, USA) was used throughout the study. All other reagents were of analytical grade from Beijing Chemical Reagent Co. (Beijing, China).

2.2. Preparation of Ethanol Extract of RC. The ethanol extract of RC was prepared by the Department of Pharmacy in China-Japan Friendship Hospital and its main constituents were reported to be alkaloids. The content of berberine and palmatine in the ethanol extract of RC was 23.03% and 5.52% [20].

2.3. Animals. Twenty male Sprague-Dawley rats (230–270 g) were obtained from Beijing Vital River Laboratory Animal Technology Co., Ltd. (Beijing, China), housed under standard conditions of temperature, humidity, and light, and had free access to standard rodent diet and water before the experiment. Animal welfare and experimental procedures were strictly in accordance with the Guide for the Care and Use of Laboratory Animals. The animal protocol was approved by the Animal Ethics Committee at the Institute of Chinese Materia Medica, China Academy of Chinese Medical Sciences. Animals were randomly divided into a control and a model group.

2.4. Induction of PI-IBS Rats and Administration. After an overnight fast, acute colonic inflammation of 10 rats was induced as PI-IBS model by intracolonic instillation of 4%

acetic acid (1 mL) by a silicone tube connected with injector at 8 cm proximal to the anus for 30 s. Then, phosphate buffered saline (1 mL) was instilled to dilute the acetic acid and rinse the colon. The control rats were handled identically except that saline was instilled instead of 4% acetic acid. One week later, the front upper limb, chest, and front porch of PI-IBS model rats were wrapped by adhesive tape for 1 h. The rats had free access to food and water, except when the procedure required deprivation. As previously described [19], distal colonic motility, motility index (MI), number of feces defecated in 2 h, and the time of glass bead output were performed to quantify the visceral hypersensitivity and altered colonic motility after subsidence of inflammation in rats before acetic acid enema and after being cramped.

RC was administered by gastric gavages at the 7 days and behavior tests periods. The control group rats were given distilled water (10 mL/kg).

2.5. Drug Analysis. Plasma concentrations of berberine and palmatine were determined by using the UPLC-MS/MS method previously developed and validated [20]. The qualitative chemical profile of these extracts was analyzed by UPLC-MS/MS as previously described [21]. And the content of berberine and palmatine in the ethanol extract of RC was 23.03% and 5.52%.

2.6. Pharmacokinetic Analysis. Before the experiment, the rats were fasted overnight and then subjected to the following surgical procedures under anesthesia induced by intraperitoneal injection of chloral hydrate at 150 mg/kg. A polyethylene catheter (0.50 mm i.d., 1.00 mm o.d.; Portex Limited, Hythe, China) was cannulated into the right jugular vein. The distal end of the catheter was led under the skin and exteriorized at the back of the neck. After surgery, the rat was then allowed to recover for 24 h and fasted overnight prior to drug administration. The RC extract freshly dissolves in pure water after dispersion with the aid of an ultrasonic instrument administered intragastrically (i.g.) into rats. After drug administration, the blood samples (200 μ L) were collected from the catheter into heparinized centrifuge tubes at appropriate intervals (5 min, 15 min, 30 min, and 1, 1.5, 2, 3, 4, 6, 8, 10, and 12 h). After centrifugation at 3500 rpm for 15 min, 100 μ L of plasma was collected and stored at -80°C until analysis. After each blood collection, 200 μ L of physiological saline containing 20 units/mL of heparin was immediately injected back into the body to flush the catheter and prevent coagulation. The amounts of berberine and palmatine in plasma were estimated by UPLC-MS/MS analysis as described previously.

2.7. Pharmacokinetic Data Analysis. Noncompartmental methods using WinNonlin software (Pharsight Corporation, Mountain View, USA, Version 6.3) were used to analyze plasma concentration *versus* time profiles and estimate the following pharmacokinetic parameters: terminal elimination half-life ($t_{1/2}$, λ_z); area under the plasma concentration *versus* time curve from zero to the last sampling time (AUC_{0-t}); volume of distribution (V_d , λ_z); and total body clearance (CL). The peak plasma concentration (C_{\max}) and the time to

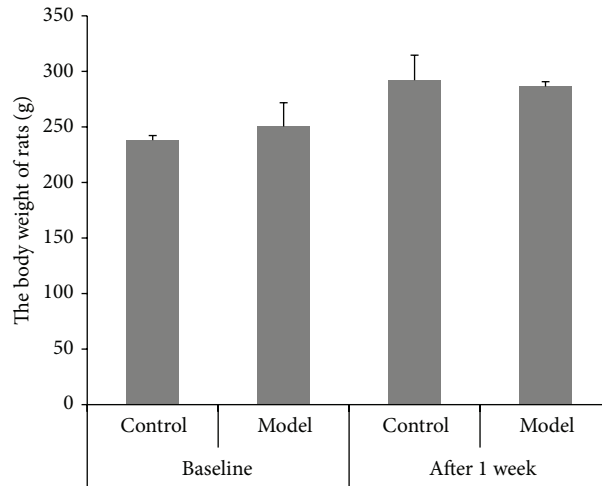


FIGURE 1: The change of body weight before enema and after stress in rats (mean \pm SD, $n = 10$).

reach C_{\max} (T_{\max}) for i.g. dose were read directly from the observed individual plasma concentration-time data.

2.8. Data Analysis. All reported values represent mean \pm SD. The statistical difference was calculated using an unpaired t -test with a two-tailed distribution for comparison of two mean values. P value < 0.05 was considered statistically significant.

3. Results

3.1. The Change in Body Weight of Rats. Before enema and after stress, the body weights of rats were measured (Figure 1). The increase in body weight of rats in model group was slower than that of rats in control group (238 g versus 292 g for control group and 250 g versus 286 g for model group). However, the difference between the two groups before enema and after stress was not significant.

3.2. Recording of Distal Colonic Motility and Calculation of Motility Index (MI). Before enema and after stress, the distal colonic MI was observed (Figure 2) and calculated (Figure 3). At the time point before enema, there was no remarkable difference in MI between two groups. After given the stress, the distal colonic MI in the model group was significantly accelerated from 1126.83 mmHg-s to 2060.67 mmHg-s compared with the control group.

3.3. The Time of the Glass Bead Output and the Number of the Fecal Pellet Outputs in 2 Hours. Before enema and after stress, the time of the glass bead output (Figure 4) and the number of the fecal pellet outputs in 2 hours (Figure 5) were observed and calculated. At the time point before enema, there was no remarkable difference in the time of the glass bead output and the number of the fecal pellet outputs in 2 hours between the two groups. However, the time of the glass bead output in the model group was significantly shortened and the number of the fecal pellet outputs in model group was significantly

TABLE 1: The number of the mast cells in proximal colon (mean \pm SD, $n = 5$).

Group	Mast cell count after stress (piece)
Control	3.27 \pm 1.05
Model	6.77 \pm 2.73*

* $P < 0.05$ compared with the control group.

increased compared with the control group after given the stress.

3.4. Histological Features of Colonic Tissue. Mucosal histological features in the lamina propria and the submucosa were observed by microscopy. Figure 6 shows a clear and integral structure of colonic mucosa, including a continuous and integral intestinal epithelium, regular glandular arrangement, and no abnormal cells. In addition, few inflammatory cell infiltrations are seen in the lamina propria. There is no remarkable inflammatory feature in the colon of the rats in the control as well as the model group.

3.5. Mast Cells Count and Degranulation Rate in the Proximal Colon. Figure 7 shows the distribution and quantity of the mast cells. Most of the mast cells were distributed in the submucosa and lamina propria, in line or around the digestive tract's vessels, lymphatic vessels, and peripheral nerves. Mast cells were round, oval, or irregular, featured as aubergine cytoplasm and blue karyon using a toluidine blue stain. Moreover, the smaller cells had less cytoplasm and clear periphery while the bigger ones had not only more cytoplasm and unclear peripheries but also aubergine granules around the karyon. The distribution of the mast cells in the model group was the same as the control group. However the number of mast cells in the model group was remarkably increased (Table 1). Also the cytomembrane of mast cells in the model group was ruptured and aubergine granules were dispersed in intercellular matrix. These results indicate that

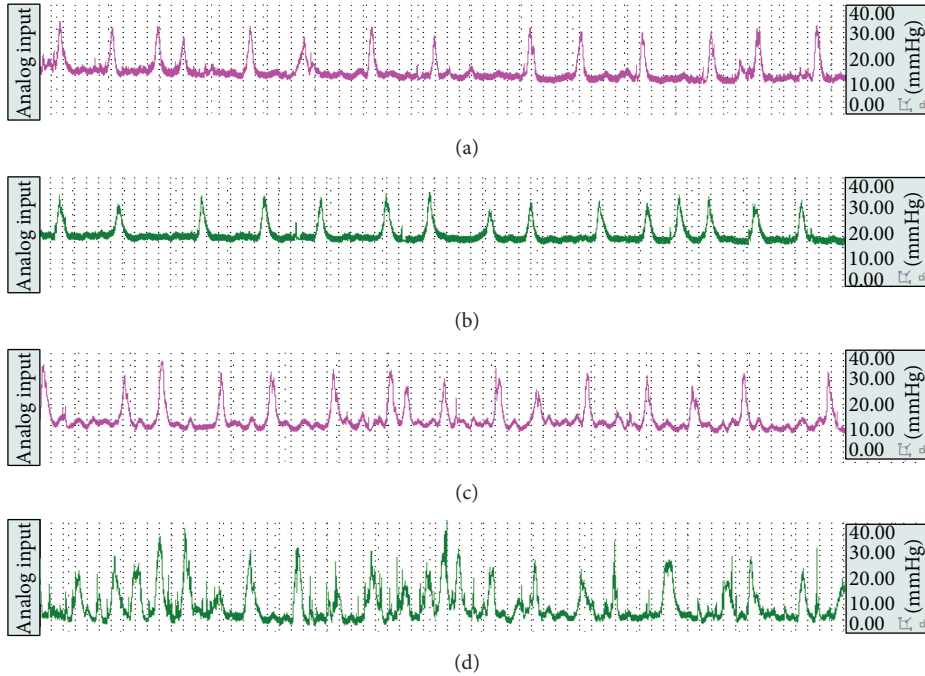


FIGURE 2: The representative curve of colonic movement in the control group (a) and the model group (b) before enema and in the control group (c) and the model group (d) after stress.

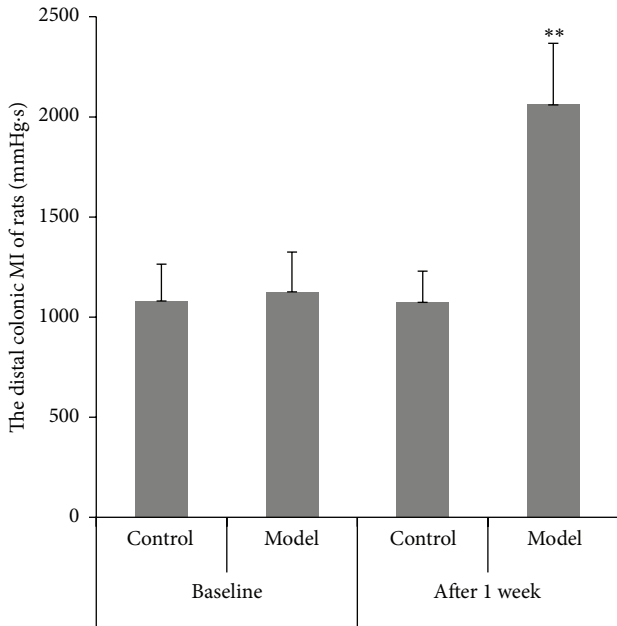


FIGURE 3: The distal colonic MI of rats in the control group and the model group (mean \pm SD, $n = 10$). ** $P < 0.01$ compared with normal group.

intracolonic instillation of acetic acid with restraint stress can cause the anomaly of mast cells.

3.6. Pharmacokinetic Analysis. The mean plasma concentration-time profiles of berberine and palmatine following intragastric (i.g.) administration of the RC extract are represented in Figure 8. Also, their pharmacokinetic parameters

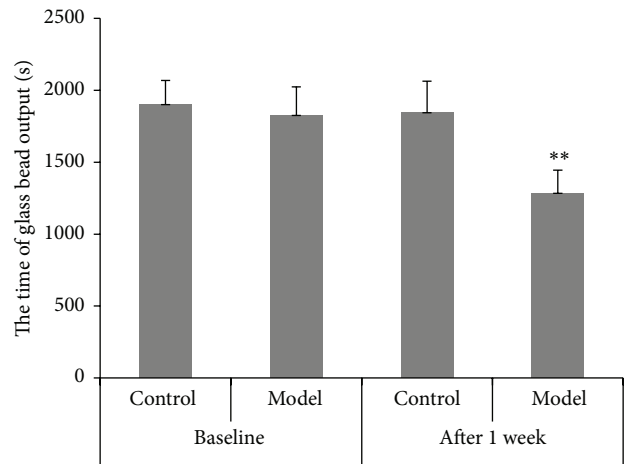


FIGURE 4: Time of the glass bead output (s) (mean \pm SD, $n = 10$). ** $P < 0.01$ compared with normal group.

are summarized in Table 2. The results show that both berberine and palmatine were absorbed rapidly by the body 15 min after intragastric administration of RC extraction in both the control and model groups. Moreover, it is noteworthy that the C_{max} and the area under the plasma drug concentration *versus* time curves of berberine were significantly increased in the model group (39.18 ± 7.85 ng/mL; 9874.67 ± 2713.10 min·ng/mL) in comparison to the control group (20.04 ± 12.14 ng/mL; 4954.25 ± 784.34 min·ng/mL). On the other hand, compared with that in control group (5124.29 ± 1841.24 L/kg; 198.61 ± 75.35 L/h/kg), the marked decrease of V_d/F and CL/F of berberine in the model

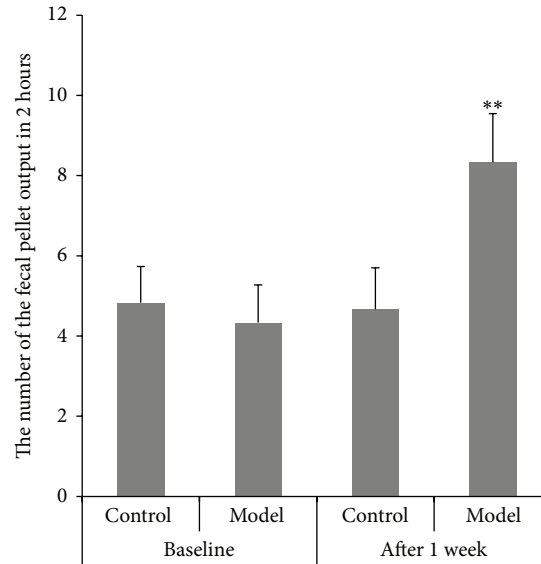


FIGURE 5: Number of the fecal pellet outputs in 2 hours (mean \pm SD, $n = 10$). ** $P < 0.01$ compared with normal group.

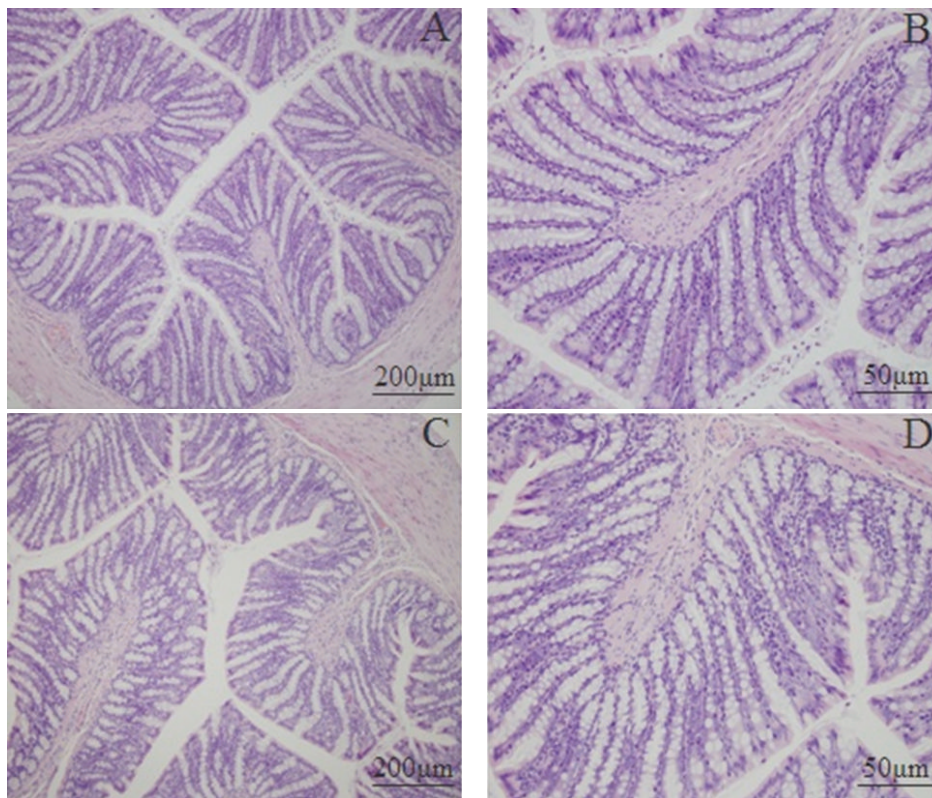


FIGURE 6: Photomicrographs of distal colons from the control group (A, $\times 100$; B, $\times 400$) and model group (C, $\times 100$; D, $\times 400$) by hematoxylin and eosin staining.

group (2503.89 ± 542.41 L/kg; 124.34 ± 27.42 L/h/kg) suggested that the elimination of berberine slowed down. For palmatine, the $AUC_{(0-t)}$ in the model group significantly increased (1470.61 ± 229.83 min·ng/mL versus 2186.61 ± 693.35 min·ng/mL). Additionally, a second peak at 3 hours for berberine and 4 hours for palmatine was observed in the model group.

4. Discussion

The curing PI-IBS effect of herbs has been paid more and more attention because of increasing incidence of PI-IBS and lack of effective drugs. Animal models of PI-IBS play an important role in the screening and evaluation of drugs for PI-IBS patients.

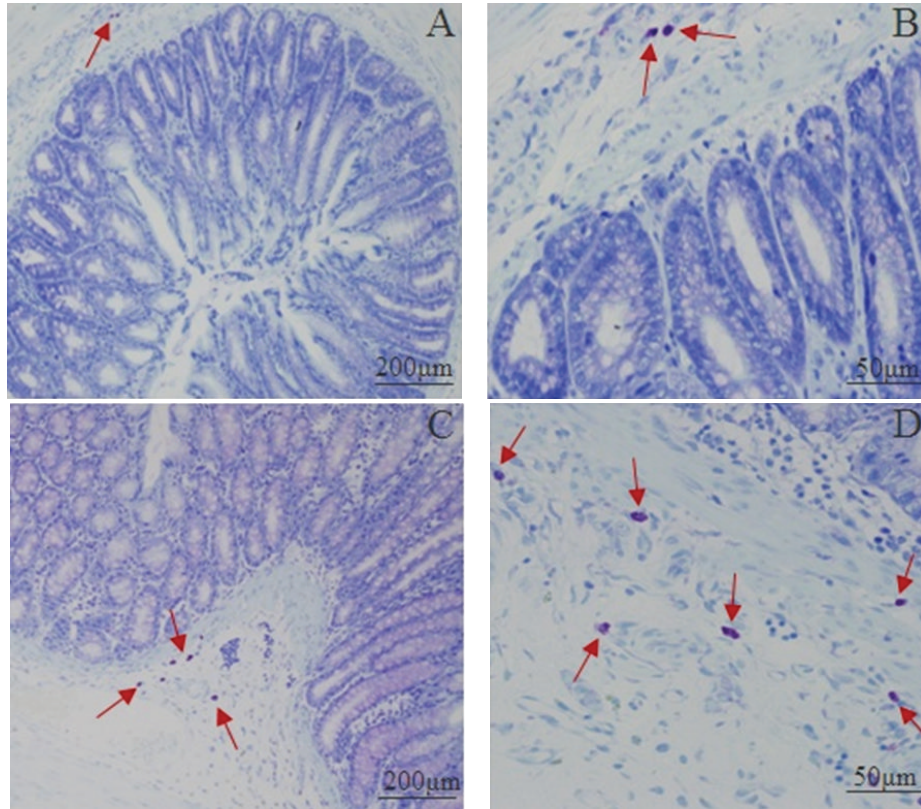


FIGURE 7: Photomicrographs of mast cell in proximal colons from the control group (A, $\times 100$; B, $\times 400$) and the model group (C, $\times 100$; D, $\times 400$) by toluidine blue staining. The red arrows indicated the mast cell.

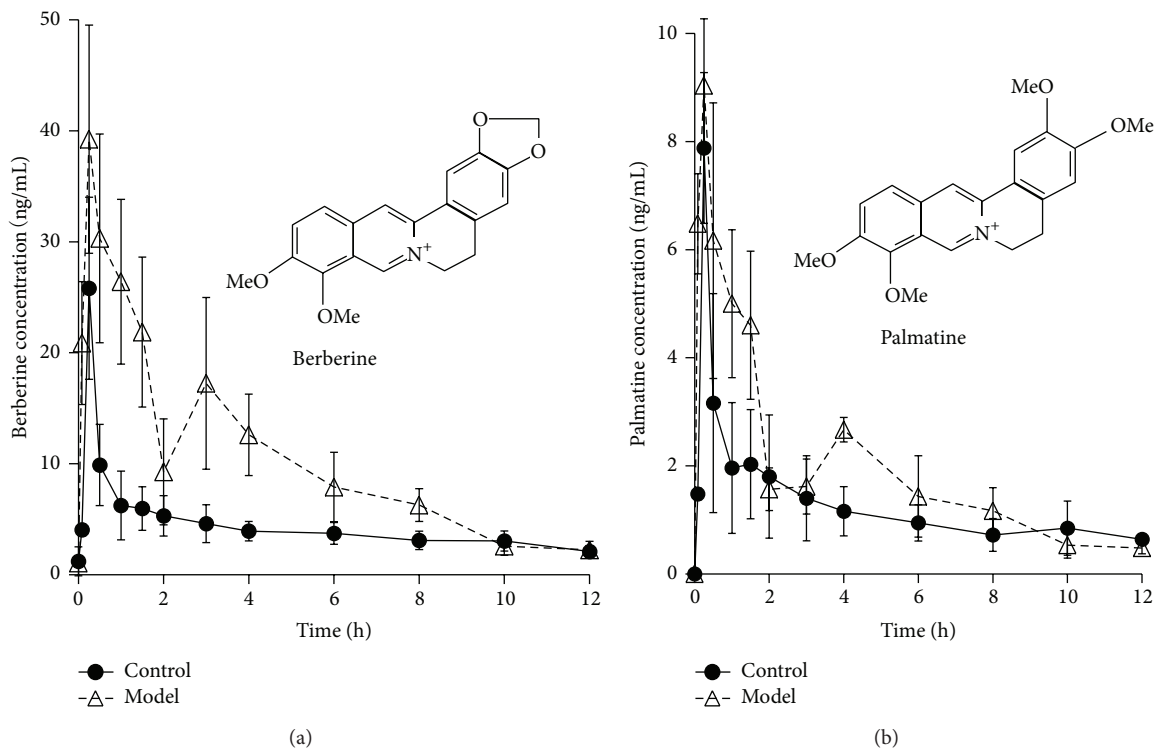


FIGURE 8: The mean plasma concentration (ng/mL) of berberine and palmatine versus time (h) profiles after oral administration of *Rhizoma Coptidis* extract in the control and PI-IBS model rats. Values were expressed as mean \pm SD ($n = 5$).

TABLE 2: Pharmacokinetic parameters of berberine and palmatine in rat after oral administration of *Rhizoma Coptidis* extract at a dose of 96 mg/kg (mean \pm SD, $n = 5$).

Parameters	Berberine		Palmatine	
	Control	Model	Control	Model
$T_{1/2,\lambda_z}$ (min)	945.8 \pm 349.5	836.2 \pm 253.3	1611.7 \pm 616.0	1521.7 \pm 710.9
T_{max} (min)	15.0 \pm 0.0	15.0 \pm 0.0	15.0 \pm 0.0	15.0 \pm 0.0
C_{max} (ng/mL)	20.0 \pm 12.1	39.2 \pm 7.9**	8.1 \pm 2.2	9.1 \pm 1.2
AUC_{0-t} (min·ng/mL)	4954.3 \pm 784.3	9874.7 \pm 2713.1**	1470.6 \pm 229.8	2186.6 \pm 693.4*
V_d/F_{λ_z} (L/kg)	5124.3 \pm 1841.2	2503.9 \pm 542.4**	4869.6 \pm 1237.6	4315.9 \pm 1111.3
CL/F (L/h/kg)	198.6 \pm 75.4	124.3 \pm 27.4*	147.4 \pm 45.3	119.3 \pm 28.1

** $P < 0.01$ and * $P < 0.05$ compared with the control group.

In the present study, PI-IBS rat models were established by intracolonic instillation of acetic acid to induce acute inflammation of colon; after the inflammation resolved, wrap restraint stress was given to the rats. During the process of modeling, the rats in the model groups all have serious diarrhea in the three days after enema; this diarrhea gradually resolved in the following days. The body weight in the model group grew slowly while that in the control group grew faster. MI is significantly increased after given stress in the model group. Moreover, the number of mast cells in model group was dramatically increased. However, there was no remarkable inflammatory feature in the colon of the rats in control and model group. These results indicate that intracolonic instillation of acetic acid with wrap restraint stress can largely imitate the symptoms of human PI-IBS and be used as animal models of PI-IBS [22].

RC is a key component of many traditional Chinese medicine prescriptions used to treat syndromes including inflammation [23] and diarrhea, including PI-IBS. However, up to now, little attention has been paid to the pharmacokinetics of alkaloids in irritable bowel syndrome animals and human. Also, drugs are used to treat diseases and only patients are the ultimate consumers of drugs. It is necessary to study the pharmacokinetics of alkaloids in the pathological state. Therefore, in our study, we compared the pharmacokinetics of berberine and palmatine in rat plasma after oral RC at a dosage of 96 mg/kg between normal and PI-IBS rats. The findings showed that C_{max} and $AUC_{(0-t)}$ of berberine in the model group significantly increased while V_d/F and CL/F decreased. $AUC_{(0-t)}$ of palmatine in the model group significantly increased.

Interestingly, a second peak at 3 hours for berberine and 4 hours for palmatine was observed in model group. However, similar results had not happened in the control group. The difference is probably due to the abnormality of colonic motility in the model group. But the results are inconsistent with Deng and Yan's reports [24, 25]. Both of them observed three peaks in mean plasma concentration curves of berberine, palmatine, and jatrorrhizine after oral administration of the combination of *Coptis chinensis* and Fructus Evodiae or RC extraction in normal rats, which is probably concerned with the distribution, reabsorption, and enterohepatic circulation. And the discrepancy probably is because the pharmacokinetic experiments are so susceptible

that the mean plasma concentration-time profiles would often differ when the experimental conditions were changed a little, such as investigator, herbs, animals, and sampling time.

In conclusion, the results indicate that the pharmacokinetics of berberine and palmatine after oral administration of RC extraction in rat plasma were significantly different between normal and PI-IBS rats, which indicates a dosage modification of *Rhizoma Coptidis* in PI-IBS pathological conditions.

5. Conclusions

The pharmacokinetic behavior of berberine and palmatine after oral administration of *Rhizoma Coptidis* extract was significantly altered in PI-IBS pathological conditions, which indicate the dosage modification of *Rhizoma Coptidis* in PI-IBS.

Conflict of Interests

The authors declare no conflict of interests.

Authors' Contribution

Zipeng Gong and Ying Chen contributed equally to this work. Zipeng Gong, Ying Chen, Xiaoxin Zhu, and Yu Dong designed the experimental protocol. Zipeng Gong, Ruijie Zhang, Yinghan Wang, Yan Guo, Qing Yang, Xiaogang Weng, Yujie Li, and Yajie Wang carried out the animal surgery and the blood collection. Shuangrong Gao and Hailin Wang contributed to the histological examination of inflammation and mast cells counting. Zipeng Gong and Ying Chen carried out data analysis and interpretation and wrote a draft of the paper. Xiaoxin Zhu and Yu Dong contributed to critical review of the paper.

Acknowledgments

This research was supported by National Natural Science Foundation of China (30930114 and 81001684) and Autonomous Program of China Academy of Chinese Medical Sciences (ZZ20090101). The authors would like to express their sincere thanks to Professor André Steinmetz for his improvement of the writing in this paper.

References

- [1] D. A. Drossman, "The Functional Gastrointestinal Disorders and the Rome III Process," *Gastroenterology*, vol. 130, no. 5, pp. 1377–1390, 2006.
- [2] B. Zanini, C. Ricci, F. Bandera et al., "Incidence of post-infectious irritable bowel syndrome and functional intestinal disorders following a water-borne viral gastroenteritis outbreak," *The American Journal of Gastroenterology*, vol. 107, no. 6, pp. 891–899, 2012.
- [3] R. Spiller and K. Garsed, "Post infectious irritable bowel syndrome," *Gastroenterology*, vol. 136, no. 6, pp. 1979–1988, 2009.
- [4] The State Pharmacopoeia Commission of China, *Pharmacopoeia of the People's Republic of China*, pp. 285–286, Chemical Industry Press, Beijing, China, 2010, (Chinese Edition).
- [5] M. Zhao, Y. Xian, S. Ip, H. H. S. Fong, and C. Che, "A new and weakly antispasmodic protoberberine alkaloid from rhizoma coptidis," *Phytotherapy Research*, vol. 24, no. 9, pp. 1414–1416, 2010.
- [6] H. Hong, P.-Y. Chen, T. Shih et al., "Computational pharmaceutical analysis of anti-Alzheimer's Chinese medicine Coptidis Rhizoma alkaloids," *Molecular Medicine Reports*, vol. 5, no. 1, pp. 142–147, 2012.
- [7] Y. Cao, W. Bei, Y. Hu et al., "Hypocholesterolemia of Rhizoma Coptidis alkaloids is related to the bile acid by up-regulated CYP7A1 in hyperlipidemic rats," *Phytomedicine*, vol. 19, no. 8–9, pp. 686–692, 2012.
- [8] Y. Y. Choi, M. H. Kim, I. H. Cho et al., "Inhibitory effect of Coptis chinensis on inflammation in LPS-induced endotoxemia," *Journal of Ethnopharmacology*, vol. 149, no. 2, pp. 506–512, 2013.
- [9] J. Tang, Y. B. Feng, S. Tsao, N. Wang, R. Curtain, and Y. Wang, "Berberine and Coptidis Rhizoma as novel antineoplastic agents: a review of traditional use and biomedical investigations," *Journal of Ethnopharmacology*, vol. 126, no. 1, pp. 5–17, 2009.
- [10] W. Kong, J. Wang, X. Xiao, S. Chen, and M. Yang, "Evaluation of antibacterial effect and mode of Coptidis rhizoma by microcalorimetry coupled with chemometric techniques," *Analyst*, vol. 137, no. 1, pp. 216–222, 2012.
- [11] X. Wang, S. Lin, H. Kang et al., "The effect of RHIZOMA COPTIDIS and COPTIS CHINENSIS aqueous extract on radiation-induced skin injury in a rat model," *BMC Complementary and Alternative Medicine*, vol. 13, article 105, 2013.
- [12] Y. Tjong, S. Ip, L. Lao et al., "Analgesic effect of Coptis chinensis rhizomes (Coptidis Rhizoma) extract on rat model of irritable bowel syndrome," *Journal of Ethnopharmacology*, vol. 135, no. 3, pp. 754–761, 2011.
- [13] S. Yu, X. Pang, Y. Deng et al., "A sensitive and specific liquid chromatography mass spectrometry method for simultaneous determination of berberine, palmatine, coptisine, epiberberine and jatrorrhizine from Coptidis Rhizoma in rat plasma," *International Journal of Mass Spectrometry*, vol. 268, no. 1, pp. 30–37, 2007.
- [14] H. A. Jung, N. Y. Yoon, H. J. Bae, B. Min, and J. S. Choi, "Inhibitory activities of the alkaloids from Coptidis Rhizoma against aldose reductase," *Archives of Pharmacal Research*, vol. 31, no. 11, pp. 1405–1412, 2008.
- [15] A. Rempis, F. Bea, H. J. Greten et al., "Rhizoma coptidis inhibits LPS-induced MCP-1/CCL2 production in murine macrophages via an AP-1 and NF κ B-dependent pathway," *Mediators of Inflammation*, vol. 2010, Article ID 194896, 8 pages, 2010.
- [16] C. Lin, L. T. Ng, F. Hsu, D. Shieh, and L. Chiang, "Cytotoxic effects of Coptis chinensis and Epimedium sagittatum extracts and their major constituents (berberine, coptisine and icariin) on hepatoma and leukaemia cell growth," *Clinical and Experimental Pharmacology and Physiology*, vol. 31, no. 1–2, pp. 65–69, 2004.
- [17] W. C. Lee, J. K. Kim, J. W. Kang et al., "Palmatine attenuates D-galactosamine/lipopolysaccharide-induced fulminant hepatic failure in mice," *Food and Chemical Toxicology*, vol. 48, no. 1, pp. 222–228, 2010.
- [18] Y. M. Kim, Y. M. Ha, Y. C. Jin et al., "Palmatine from Coptidis rhizoma reduces ischemia-reperfusion-mediated acute myocardial injury in the rat," *Food and Chemical Toxicology*, vol. 47, no. 8, pp. 2097–2102, 2009.
- [19] Z. Gong, Y. Chen, R. Zhang et al., "Pharmacokinetic comparison of berberine in rat plasma after oral administration of berberine hydrochloride in normal and post inflammation irritable bowel syndrome rats," *International Journal of Molecular Sciences*, vol. 15, no. 1, pp. 456–467, 2014.
- [20] X. Weng, Y. Li, Q. Yang et al., "Effects of Wuji Pill with different compatibility on the activity of cytochrome P450 1A2 in rat liver microsomes in vitro," *World Chinese Journal of Digestology*, vol. 18, no. 6, pp. 586–591, 2010.
- [21] Y. Chen, Y. J. Li, Y. J. Wang et al., "Comparative pharmacokinetics of active alkaloids after oral administration of Rhizoma Coptidis extract and Wuji Wan formulas in rat using a UPLC-MS/MS method," *European Journal of Drug Metabolism and Pharmacokinetics*, 2014.
- [22] J. Schulle-Kiuntke, J.-S. Frick, P. Zanger, and P. Enck, "Post-infectious irritable bowel syndrome—a review of the literature," *Zeitschrift für Gastroenterologie*, vol. 49, no. 8, pp. 997–1003, 2011.
- [23] Q. Wang, Y. Cui, T. Dong, X. Zhang, and K. Lin, "Ethanol extract from a Chinese herbal formula, "zuojin Pill", inhibit the expression of inflammatory mediators in lipopolysaccharide-stimulated RAW 264.7 mouse macrophages," *Journal of Ethnopharmacology*, vol. 141, no. 1, pp. 377–385, 2012.
- [24] Y. Deng, Q. Liao, S. Li, K. Bi, B. Pan, and Z. Xie, "Simultaneous determination of berberine, palmatine and jatrorrhizine by liquid chromatography-tandem mass spectrometry in rat plasma and its application in a pharmacokinetic study after oral administration of coptis-evodia herb couple," *Journal of Chromatography B*, vol. 863, no. 2, pp. 195–205, 2008.
- [25] R. Yan, Y. Wang, Y. Liu, and X. Di, "Comparative pharmacokinetics of berberine, palmatine and jatrorrhizine in rat plasma after oral administration of Rhizomacoptidis and Zuojinwan using liquid chromatography-tandem mass spectrometry," *Iranian Journal of Pharmaceutical Research*, vol. 11, no. 3, pp. 949–957, 2012.