

# Molecular Analysis of *Anisakis* Type I Larvae in Marine Fish from Three Different Sea Areas in Korea

Woon-Mok Sohn, Jung-Mi Kang, Byoung-Kuk Na\*

Department of Parasitology and Tropical Medicine, and Institute of Health Sciences, Gyeongsang National University School of Medicine, Jinju 660-751, Korea

**Abstract:** Anisakiasis, a human infection of *Anisakis* L3 larvae, is one of the common foodborne parasitic diseases in Korea. Studies on the identification of anisakid larvae have been performed in the country, but most of them have been focused on morphological identification of the larvae. In this study, we analyzed the molecular characteristics of 174 *Anisakis* type I larvae collected from 10 species of fish caught in 3 different sea areas in Korea. PCR-RFLP and sequence analyses of rDNA ITS and mtDNA *cox1* revealed that the larvae showed interesting distribution patterns depending on fish species and geographical locations. *Anisakis pegreffii* was predominant in fish from the Yellow Sea and the South Sea. Meanwhile, both *A. pegreffii* and *A. simplex* sensu stricto (*A. simplex* s.str.) larvae were identified in fish from the East Sea, depending on fish species infected. These results suggested that *A. pegreffii* was primarily distributed in a diverse species of fish in 3 sea areas around Korea, but *A. simplex* s.str. was dominantly identified in *Oncorhynchus* spp. in the East Sea.

**Key words:** *Anisakis*, PCR-RFLP, ITS, *cox1*

## INTRODUCTION

Anisakiasis (or Anisakidosis) is a fishborne parasitic infection, which is caused by an accidental infection with larval nematodes belonging to the family Anisakidae when consuming raw, undercooked, or improperly processed marine fish and cephalopods, resulting in sudden gastrointestinal disorders, nausea, vomiting, diarrhea, or allergic reactions [1]. Human anisakiasis has been increasing worldwide in accordance with the increase of consumption of raw or undercooked marine fish [2,3]. Most of the human cases have been reported in East Asia, including Japan and Korea, but there have also been increasing reports from other geographical areas or countries, including coastal areas of Europe, New Zealand, Canada, Brazil, Chile, and Egypt [2-4]. *Anisakis simplex* (*Anisakis* type I), *A. physeteris* (*Anisakis* type II), and *Pseudoterranova decipiens* (*Terranova* type A) larvae have been identified as the major causative agents of human anisakiasis [1,4].

Several studies on the infection status of anisakid larvae in

marine fish and cephalopods have been performed in Korea. Various types of anisakid larvae in the genus *Anisakis*, *Contracaecum*, *Raphidascaris*, and *Hysterothylacium* were identified in a variety of marine fish and cephalopods caught in the coastal areas of Korea [5-8]. Based on morphological characteristics, *A. simplex* (*Anisakis* type I) is the most dominant species among anisakid larvae found in fish paratenic hosts and human infection cases, but species identification at the molecular level is necessary to clarify the species identity between the closely related ones, such as *A. simplex* sensu stricto (s.str.), *A. pegreffii*, *A. typica*, *A. physeteris*, and so on [4].

In this study, we analyzed the molecular characteristics of *Anisakis* type I larvae collected from 10 fish species caught in 3 different locations of Korea to obtain information on distribution and paratenic hosts of *Anisakis* species in the sea areas of the country.

## MATERIALS AND METHODS

### Parasites

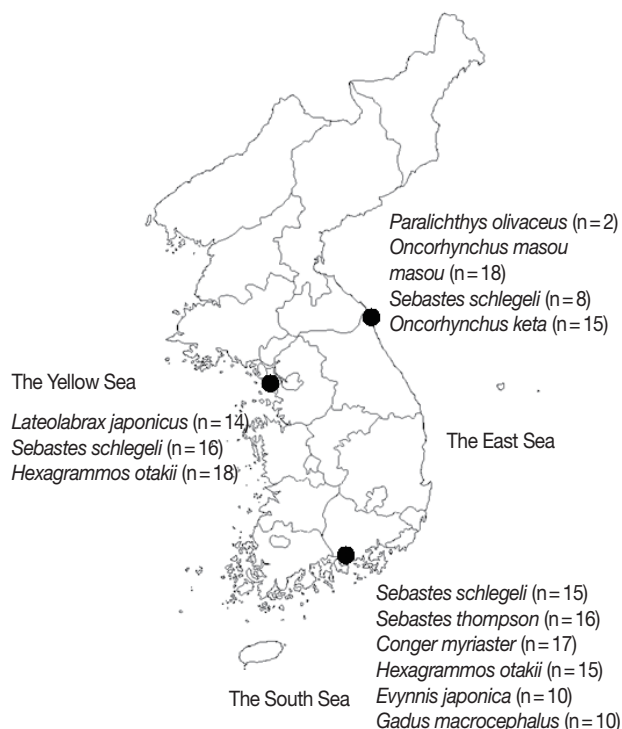
*Anisakis* type I larvae (n = 174) used in this study were collected from 10 species of marine fish purchased from 3 geographically different local fish markets in Goseong-gun, Gangwon-do (the East Sea), Sacheon City, Gyeongsangnam-do (the South Sea), or Incheon Metropolitan City (the Yellow Sea) in

•Received 21 March 2014, revised 15 May 2014, accepted 26 May 2014.

\*Corresponding author (bkna@gnu.ac.kr)

© 2014, Korean Society for Parasitology and Tropical Medicine

This is an Open Access article distributed under the terms of the Creative Commons Attribution Non-Commercial License (<http://creativecommons.org/licenses/by-nc/3.0/>) which permits unrestricted non-commercial use, distribution, and reproduction in any medium, provided the original work is properly cited.



**Fig. 1.** *Anisakis* type I larvae used in this study. A total of 174 larvae randomly selected from morphologically confirmed *Anisakis* type I larvae, isolated from 10 species of fish caught in 3 different sea areas in Korea, were used. The number of larvae isolated from each species of fish and analyzed in this study is presented. ●, fish purchased sites.

2008 [7]. The parasites were morphologically confirmed as *Anisakis* type I larvae under stereomicroscopic examination [7]. The number of larvae isolated from each species of fish is summarized in Fig. 1.

#### Amplifications of rDNA ITS and mtDNA *cox1* regions

Genomic DNA was extracted from individual larva using a Genomic DNA Extraction Kit (Real Biotech Corporation, Banqiao City, Taiwan) according to manufacturer's instruction. Amplifications of rDNA ITS (ITS1, 5.8 subunit rRNA gene, and ITS2) and mtDNA *cox1* were performed by PCR. The primers used for the amplification of ITS were 5'-GTCGAATTCGTAG-GTGAACCTGCG-3' and 5'-GCCGGATCCGAATCCTGGT-TAGIT-3' [9]. For amplification of *cox1*, 5'-TTTTTGGGC-ATCCTGAGGTTTAT-3' and 5'-TAAAGAAAGAACATAAT-GAAAATG-3' were used [10]. The amplification reactions for ITS and *cox1* were performed using the following thermal cycling conditions: 94°C for 5 min, 30 cycles at 94°C for 1 min, 52°C for 1 min, and 72°C for 1 min, followed by a final exten-

sion at 72°C for 10 min. In order to minimize the likelihood of possible nucleotide misincorporations in the amplification processes, Ex Taq DNA polymerase (Takara, Otsu, Japan), which has a proof-reading function, was used in all the PCR reactions.

#### RFLP analysis

Each PCR product was digested with 10 units of each restriction endonuclease, *Hinf* I (Takara) or *Hha* I (Takara), respectively, in a volume of 20 µl at 37°C for 3 hr [11]. The reaction mixtures were separated on 2.5% agarose gels containing Red Safe™ nucleic acid staining solution (Intron Biotechnology, Sungnam, Korea) and the restriction fragments were visualized under a UV illuminator.

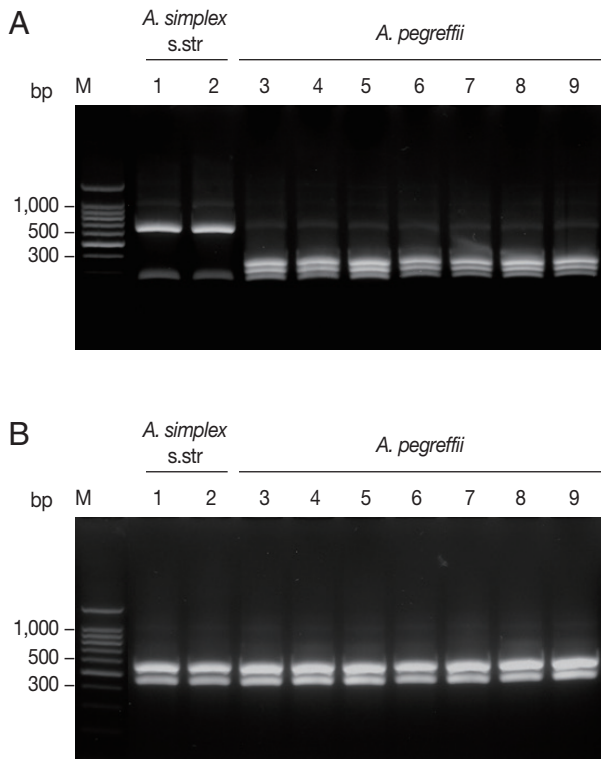
#### Sequencing and phylogenetic analysis

The PCR product was analysed on a 1.2% agarose gel, purified from the gel, and then ligated into the T&A cloning vector (Real Biotech Corporation). Each ligation mixture was transformed into *Escherichia coli* DH5α competent cells, and positive clones with the appropriate insert were selected by colony PCR. The nucleotide sequences of the cloned inserts were analysed by automatic DNA sequencing. Nucleotide and deduced amino acid sequences were analyzed using EditSeq and Clustal in the Megalign program, a multiple alignment program in the DNASTAR package (DNASTAR, Madison, Wisconsin, USA). The nucleotide sequences for ITS and *cox1* were registered in the GenBank database (accession nos. KJ011481–KJ011523). The phylogenetic trees for ITS and *cox1* were constructed using the neighbor-joining method in MEGA 4 [12]. Bootstrap proportions were used to assess the robustness of the tree with 1,000 bootstrap replications.

## RESULTS

#### PCR-RFLP patterns of rDNA ITS

The 174 *Anisakis* type I larvae collected from 10 fish species caught in 3 different sea areas in Korea were analyzed by PCR-RFLP on the basis of the restriction fragment patterns. Amplification of the ITS region produced an amplicon of approximate size of 1,000 bp in all analyzed samples. Digestion of the amplified ITS with *Hinf* I resulted in 2 different fragment patterns corresponding to 2 sibling species of *A. simplex* complex, *A. simplex* s.str. and *A. pegreffii* (Fig. 2). The banding patterns observed in this study were well corresponded to the known pat-

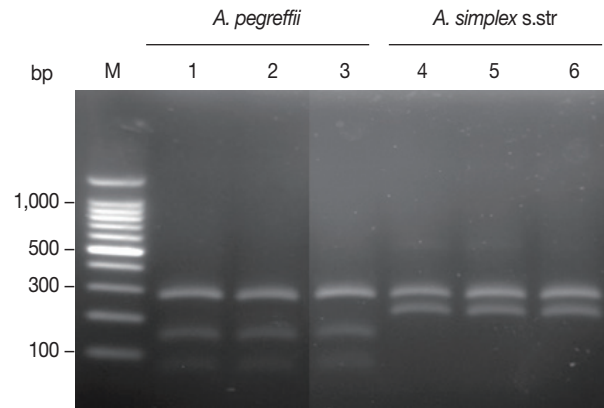


**Fig. 2.** PCR-RFLP analysis of rDNA ITS for molecular identification of anisakid larvae. Each PCR product was digested with *Hinf* I or *Hha* I and analyzed on agarose gel. (A) *Hinf* I digestion. (B) *Hha* I digestion. Lanes 1–2, *A. simplex* s. str. (each from *G. macrocephalus* and *O. keta*, respectively); Lanes 3–9, *A. pegreffii* (each from *L. japonicus*, *S. thompson*, *C. myriaster*, *H. otakii*, *E. japonica*, *G. macrocephalus*, and *P. olivaceus*, respectively); Lane M, 100 bp ladder.

terms of *A. pegreffii* and *A. simplex* s.str. reported previously [6,11]. Digestion with *Hinf* I produced 2 strong bands and a weak band (620, 270, 80 bp, respectively) for *A. simplex* s.str., whereas *A. pegreffii* showed 3 fragments of 370, 300, and 250 bp (Fig. 2A). Meanwhile, digestion with *Hha* I yielded the same digestion pattern of 2 fragments of approximately 550 and 430 bp for all the samples tested (Fig. 2B).

#### PCR-RFLP patterns of mtDNA *cox1*

Amplification of the mtDNA *cox1* produced an amplicon of about 490 bp in all analyzed samples. The RFLP patterns with *Hinf* I digestion produced different fragment patterns depending on the species of anisakids (Fig. 3). *A. simplex* s.str. showed 2 fragments of approximately 270 and 210 bp, while *A. pegreffii* showed 2 strong fragments of approximately 270 and 150 bp and a weak fragment of approximately 80 bp. The banding patterns observed in this study were also well corresponded to



**Fig. 3.** PCR-RFLP analysis of mtDNA *cox1* for molecular identification of anisakid larvae. Each PCR product was digested with *Hinf* I and analyzed on agarose gel. Lanes 1–3, *A. pegreffii* (each from *S. schlegeli*, *C. myriaster*, and *H. otakii*, respectively); Lanes 4–6, *A. simplex* s. str. (each from *G. macrocephalus*, *O. masou masou*, and *O. keta*, respectively); Lane M, 100 bp ladder.

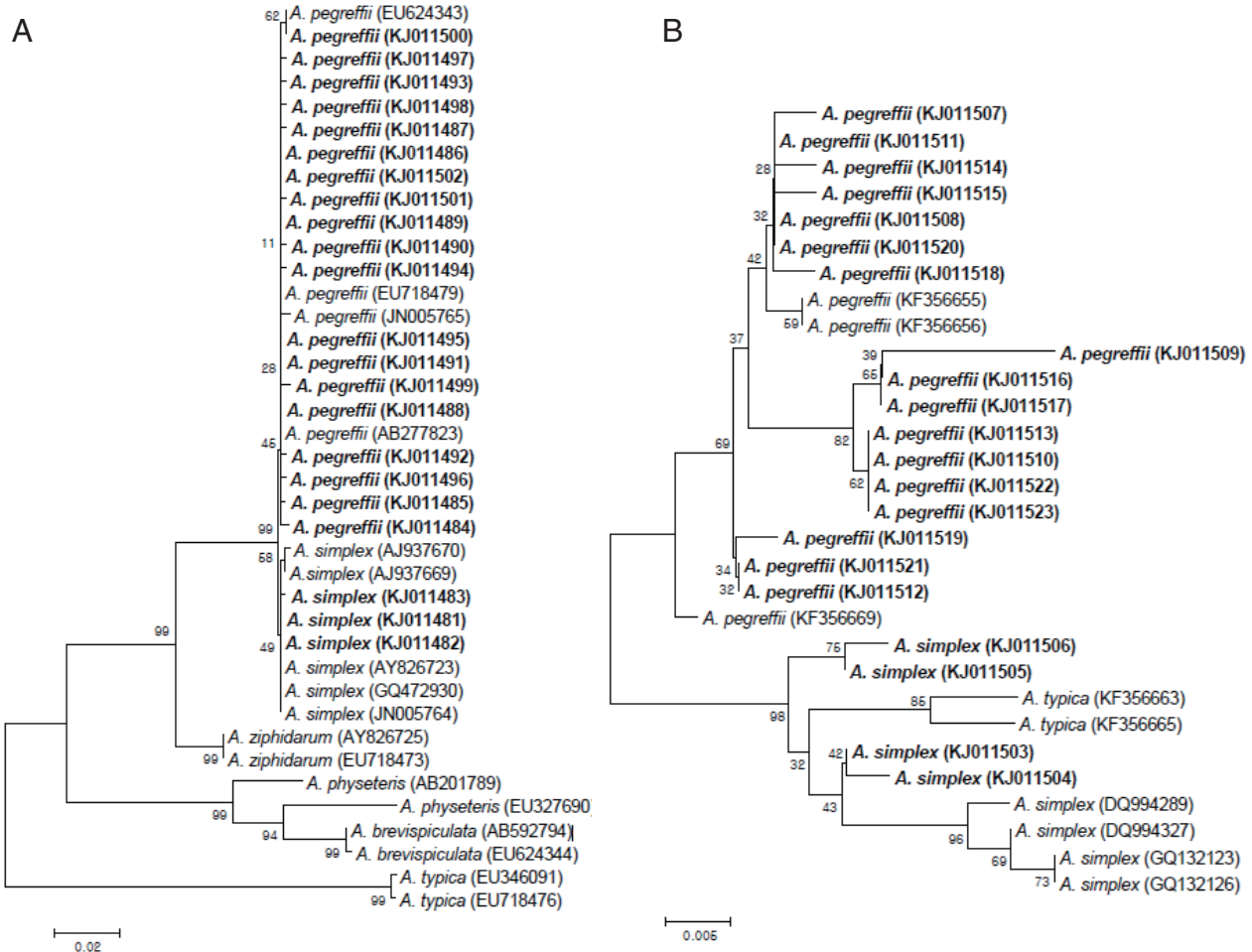
the patterns of *A. pegreffii* and *A. simplex* s.str. reported previously [11].

#### Sequence and phylogenetic relationships

We also performed sequencing analysis of ITS and *cox1* of randomly selected larvae from different species of fish to ensure the performance of PCR-RFLP. Based on the presence of *Hinf* I and *Hha* I restriction sites in the sequences, all the sequences obtained were well corresponded to the results by PCR-RFLP analysis (data not shown). The ITS gene sequences of *A. pegreffii* and *A. simplex* s.str. isolated from fish analyzed in this study showed 98.6–100% and 98.6–99.8% similarities with those of previous reported sequences, respectively. The *cox1* analyzed here also showed high sequence similarities of 96.3–99.7% and 96.7–98.7% with those of previously reported *A. pegreffii* and *A. simplex* s.str., respectively. The phylogenetic analyses of both ITS and *cox1* revealed that the taxonomic positions for the *Anisakis* species in the phylogenetic tree corresponded well to the identification results by PCR-RFLP analysis (Fig. 4).

#### Distribution of *A. simplex* complex in each species of fish

PCR-RFLP and sequence analyses of ITS and *cox1* revealed that all 48 larvae isolated from the 3 species of fish caught in the Yellow Sea were *A. pegreffii* (Fig. 5). Most of the larvae collected from 6 species of fish caught in the South Sea were also *A. pegreffii* except only 1 larva isolated from *Gadus macrocephalus*, which was identified as *A. simplex* s.str. The most interest-



**Fig. 4.** Phylogenetic analysis. (A) rDNA ITS. (B) mtDNA *cox1*. Each tree was built by the neighbor-joining method using the MEGA 4 program. The sequences obtained in this study were highlighted with bold letters. Numbers on the branches indicate bootstrap proportions (1,000 replicates).

ing finding was seen in the larvae collected from fish caught in the East Sea. All the larvae infected in *Paralichthys olivaceus* and *Sebastes schlegeli* were identified as *A. pegreffii*. On the other hand, all the larvae collected from *Oncorhynchus masou masou* and *Oncorhynchus keta* were *A. simplex* s.str. No mixed infection of *A. simplex* s.str. and *A. pegreffii* was identified in all fish used in this study.

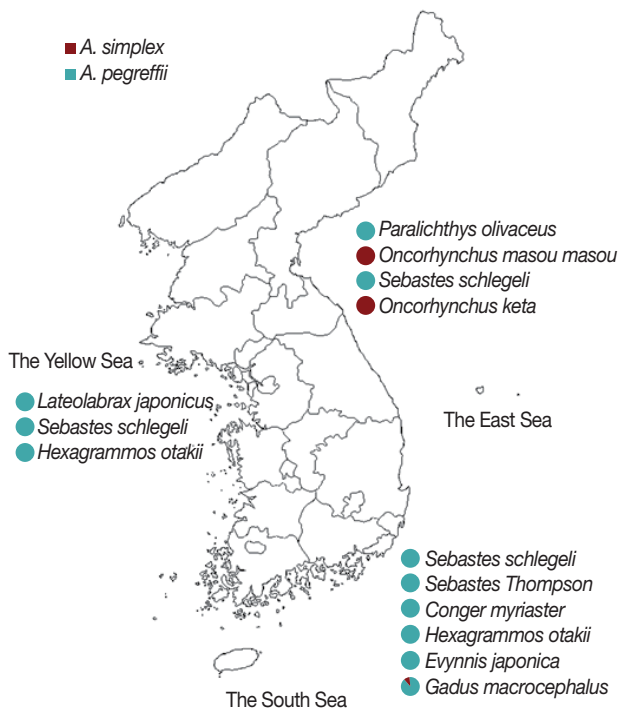
### DISCUSSION

Based on their morphological features, larvae of the genus *Anisakis* can be identified as *Anisakis* type I or type II. They differ in the length of their ventriculus and in the presence of mucron at the posterior end [13]. These morphological analyses have been widely used for classification of anisakid nema-

todes [13,14], but morphological characteristics are not always consistent and are insufficient for species identification [15]. With regard to the genus *Anisakis*, it has been reported that *Anisakis* type I larvae (morphological type) comprise several species with different genetic characters, including *A. simplex* s.str., *Anisakis pegreffii*, and *A. simplex* C [16]. Thus, molecular approaches have been introduced for accurate classification and the study of the systematic evolution of anisakid nematodes [6,9,11,15,17,18].

Here, we identified 2 sibling species of *A. simplex* complex, *A. simplex* s.str. and *A. pegreffii*, in 10 fish species caught in 3 different sea areas in Korea and analyzed their distributions in the paratenic hosts. Both RFLP and sequencing analyses of ITS and *cox1* revealed that *A. pegreffii* was predominant in 7 fish species from the Yellow Sea and the South Sea. This species





**Fig. 5.** Distribution pattern of *Anisakis* spp. larvae. The pattern of anisakid larvae identified in each species of fish is presented.

has been reported as the dominant species identified in several fish and squid from the South Sea and the Yellow Sea of Korea [6,8] as well as the East China Sea and sea areas of southern Japan [11,19-21]. Only 1 *A. simplex* s.str. was identified among 10 *Anisakis* type I larvae, and it was collected from *Gadus macrocephalus* caught in the South Sea. The other 127 larvae collected in 7 fish species caught in the Yellow Sea and the South Sea were *A. pegreffii*.

Meanwhile, in the cases of larvae collected from fish caught in the East Sea, an interesting finding was observed. Among the 4 fish species caught in this area, 2 of them, *Paralicthys olivaceus* and *Sebastes schlegeli*, were infected only with *A. pegreffii*. Meanwhile, all the larvae collected from the other 2 species of fish, *O. masou masou* and *O. keta*, were determined to be *A. simplex* s.str. Our results are consistent with previous reports, which indicate predominant infection of *A. simplex* s.str. in *Oncorhynchus* spp. [6,22].

Occurrence of hybrid genotypes, which were probably produced by natural interspecific hybridization between *A. simplex* s.str. and *A. pegreffii*, was recently reported in several studies [8,11,23,24]. However, no clear hybrid genotype of larvae was identified in this study. Considering the low levels of hybrid

type of larvae have been identified in the previous studies [8,11,23,24], limited numbers of anisakid larvae analyzed in this study can be a possible factor. Further extensive molecular characterization of larger number of anisakid larvae in various fish hosts, with distinct geographical and seasonal information, will be necessary to clarify the presence and infection status of larvae with hybrid genotypes.

*A. simplex* s.str. has been recognized as the major causative agent of human anisakiasis. Although *A. pegreffii* comprise the abundance of larvae identified in fish caught offshore in Japan, the main species of larvae associated with human anisakiasis have been identified as *A. simplex* s.str. [25]. Moreover, *A. pegreffii* is likely to be irrefutably pathogenic to humans, since only a few clinical cases caused by *A. pegreffii* infections have been reported worldwide [26,27]. Several studies have presented interesting results on the pathogenic differences between the *Anisakis* species. *A. simplex* s.str. larvae can survive for a longer time in acidic artificial gastric juice and has higher agar penetration activity than *A. pegreffii* larvae [16,28]. In addition, *A. simplex* s.str. larvae are likely to possess stronger tissue-invasive traits relevant not only to fish musculature but also to the human body [22]. These suggest that pathogenetic differences between *Anisakis* species exist, even though these differences require further elucidation. Many clinical cases of human anisakiasis have also been reported in Korea [29-31], but molecular classification of the infected larvae was not performed. Therefore, further studies on the identification of anisakid species in human anisakiasis are warranted to clarify the relevance of anisakid species involved in human anisakiasis.

In conclusion, our results collectively suggest that 2 sibling species of anisakid nematodes are distributed in different species of fish in Korean sea waters. *A. pegreffii* is the most prevalent species detected in the fishes caught offshore in Korea, especially those in the South Sea and the Yellow Sea, but all the larvae collected from *O. masou masou* and *O. keta* in the East Sea were *A. simplex* s. str.. These data provide new information on the distribution and paratenic hosts of the anisakid larvae in Korean coastal areas as well as fundamental epidemiological and biological information on anisakid species. Our results also emphasize the potential hazards of anisakid larvae for human health as a consequence of consuming raw or undercooked fish. Considering the high occurrence and infection burden of anisakid larvae in the fish caught offshore in Korea [5,7], further comprehensive studies to determine the infection status of *Anisakis* larvae in humans as well as in other relevant

commercial fish species is necessary.

## CONFLICT OF INTEREST

We have no conflict of interest related to this study.

## REFERENCES

- Chai JY, Murrell KD, Lymbery AJ. Fish-borne parasitic zoonoses: status and issues. *Int J Parasitol* 2005; 35: 1233-1254.
- Audicana MT, Kennedy MW. *Anisakis simplex*: from obscure infectious worm to inducer of immune hypersensitivity. *Clin Microbiol Rev* 2008; 21: 360-379.
- Hochberg NS, Hamer DH. Anisakidosis: perils of the deep. *Clin Infect Dis* 2010; 51: 806-812.
- Sohn WM, Chai JY. Anisakiosis (Anisakidosis). In Palmer SR et al. eds, *Oxford Textbook of Zoonoses-Biology, Clinical Practice, and Public Health Control*, 2nd ed. Oxford, UK. Oxford University Press. 2011, p 774-786.
- Choi SH, Kim J, Jo JO, Cho MK, Yu HS, Cha HJ, Ock MS. *Anisakis simplex* larvae: infection status in marine fish and cephalopods purchased from the Cooperative Fish Market in Busan, Korea. *Korean J Parasitol* 2011; 49: 39-44.
- Setyobudi E, Jeon CH, Lee CH, Seong KB, Kim JH. Occurrence and identification of *Anisakis* spp. (Nematoda: Anisakidae) isolated from chum salmon (*Oncorhynchus keta*) in Korea. *Parasitol Res* 2011; 108: 585-592.
- Cho SH, Lee SE, Park OH, Na BK, Sohn WM. Larval anisakid infections in marine fish from three sea areas of the Republic of Korea. *Korean J Parasitol* 2012; 50: 295-299.
- Setyobudi E, Jeon CH, Choi K, Lee SI, Lee CI, Kim JH. Molecular identification of anisakid nematodes third stage larvae isolated from common squid (*Todarodes pacificus*) in Korea. *Ocean Sci J* 2013; 48: 197-205.
- D'Amelio S, Mathiopoulou KD, Santos CP, Pugachev ON, Webb SC, Picanço M, Paggi L. Genetic markers in ribosomal DNA for the identification of members of the genus *Anisakis* (Nematoda: Ascaridoidea) defined by polymerase chain reaction-based restriction fragment length polymorphism. *Int J Parasitol* 2000; 30: 223-226.
- Hu M, D'Amelio S, Zhu X, Paggi L, Gasser R. Mutation scanning for sequence variation in three mitochondrial DNA regions for members of the *Contraecum osculatum* (Nematoda: Ascaridoidea) complex. *Electrophoresis* 2001; 22: 1069-1075.
- Umehara A, Kawakami Y, Matsui T, Araki J, Uchida A. Molecular identification of *Anisakis simplex* sensu stricto and *Anisakis pegreffii* (Nematoda: Anisakidae) from fish and cetacean in Japanese waters. *Parasitol Int* 2006; 55: 267-271.
- Tamura K, Dudley J, Nei M, Kumar S. MEGA4: Molecular Evolutionary Genetics Analysis (MEGA) software version 4.0. *Mol Biol Evol* 2007; 24: 1596-1599.
- Berland B. Nematodes from some Norwegian marine fishes. *Sarsia* 1961; 2: 1-50.
- Iglesias R, D'Amelio S, Ingrosso S, Farjallah S, Martinez-Cedeira JA, Garcia-Esteves JM. Molecular and morphological evidence for the occurrence of *Anisakis* sp. A (Nematoda, Anisakidae) in Blainville's beaked whale *Mesoplodon densirostris*. *J Helminthol* 2008; 82: 305-308.
- Mattiucci S, Nascetti G. Advances and trends in the molecular systematics of anisakid nematodes, with implications for their evolutionary ecology and host-parasite co-evolutionary processes. *Adv Parasitol* 2008; 66: 47-248.
- Arizono N, Yamada M, Tegoshi T, Yoshikawa M. *Anisakis simplex* sensu stricto and *Anisakis pegreffii*: biological characteristics and pathogenic potential in human anisakiasis. *Foodborne Pathog Dis* 2012; 9: 1-5.
- Pontes T, D'Amelio S, Costa G, Paggi L. Molecular characterization of larval anisakid nematodes from marine fishes of Madeira by a PCR-based approach, with evidence for a new species. *J Parasitol* 2005; 91: 1430-1434.
- Chen Q, Yu HQ, Lun ZR, Chen XG, Song HQ, Lin RQ, Zhu XQ. Specific PCR assays for the identification of common anisakid nematodes with zoonotic potential. *Parasitol Res* 2008; 104: 79-84.
- Abe N, Ohya N, Yanagiguchi R. Molecular characterization of *Anisakis pegreffii* larvae in Pacific cod in Japan. *J Helminthol* 2005; 79: 303-306.
- Umehara A, Kawakami Y, Ooi HK, Uchida A, Ohmae H, Sugiyama H. Molecular identification of *Anisakis* type I larvae isolated from hairtail fish off the coasts of Taiwan and Japan. *Int J Food Microbiol* 2010; 143: 161-165.
- Du C, Zhang L, Shi M, Ming Z, Hu M, Gasser RB. Elucidating the identity of *Anisakis* larvae from a broad range of marine fishes from the Yellow Sea, China, using a combined electrophoretic-sequencing approach. *Electrophoresis* 2010; 31: 654-658.
- Quiazon KMA, Yoshinaga T, Ogawa K. Experimental challenge of *Anisakis simplex* sensu stricto and *Anisakis pegreffii* (Nematoda: Anisakidae) in rainbow trout and olive flounder. *Parasitol Int* 2011; 60: 126-131.
- Abollo E, Paggi L, Pascual S, D'Amelio S. Occurrence of recombinant genotypes of *Anisakis simplex* s.s. and *Anisakis pegreffii* (Nematoda: Anisakidae) in an area of sympatry. *Infect Genet Evol* 2003; 3: 175-181.
- Martin-Sanchez J, Artacho-Reinoso ME, Diaz-Gavilan M, Valero-Lopez A. Structure of *Anisakis simplex* s. l. populations in a region sympatric for *A. pegreffii* and *A. simplex* s. s. Absence of reproductive isolation between both species. *Mol Biochem Parasitol* 2005; 141: 155-162.
- Umehara A, Kawakami Y, Araki J, Uchida A. Molecular identification of the etiological agent of the human anisakiasis in Japan. *Parasitol Int* 2007; 56: 211-215.
- D'Amelio S, Mathiopoulou KD, Brandonisio O, Lucarelli G, Doronzo F, Paggi L. Diagnosis of a case of gastric anisakidosis by PCR-based restriction fragment length polymorphism analysis.

- Parassitologia 1999; 41: 591-593.
27. Fumarola L, Monno R, Ierardi E, Rizzo G, Giannelli G, Lalle M, Pozio E. *Anisakis pegreffii* etiological agent of gastric infections in two Italian women. Foodborne Pathog Dis 2009; 6: 1157-1159.
  28. Suzuki J, Murata R, Hosaka M, Araki J. Risk factors for human *Anisakis* infection and association between the geographic origins of *Scomber japonicus* and anisakid nematodes. Int J Food Microbiol 2010; 137: 88-93.
  29. Lee EJ, Kim YC, Jeong HG, Lee OJ. The mucosal changes and influencing factors in upper gastrointestinal anisakiasis: analysis of 141 cases. Korean J Gastroenterol 2009; 53: 90-97 (in Korean).
  30. Do KR, Cho YS, Kim HK, Hwang BH, Shin EJ, Jeong HB, Kim SS, Chae HS, Choi MG. Intestinal helminthic infections diagnosed by colonoscopy in a regional hospital during 2001-2008. Korean J Parasitol 2010; 48: 75-78.
  31. Kim T, Song HJ, Jeong SU, Choi EK, Cho YK, Kim HU, Song BC, Kim KS, Kim BS, Kim YR. Comparison of the clinical characteristics of patients with small bowel and gastric anisakiasis in jeju island. Gut Liver 2013; 7: 23-29.

