

Published in final edited form as:

Nat Rev Endocrinol. 2014 January ; 10(1): 51–61. doi:10.1038/nrendo.2013.227.

The bigger picture of *FTO* – the first GWAS-identified obesity gene

Ruth J.F. Loos¹ and Giles S.H. Yeo^{2,3}

¹The Genetics of Obesity and Related Metabolic Traits Program, The Charles Bronfman Institute for Personalized Medicine, The Mindich Child Health and Development Institute, The Icahn School of Medicine at Mount Sinai, New York, NY 10029, USA

²MRC Metabolic Diseases Unit, University of Cambridge Metabolic Research Laboratories, Wellcome Trust-MRC Institute of Metabolic Science, Addenbrooke's Hospital, Cambridge CB2 0QQ, United Kingdom

³National Institute for Health Research Cambridge Biomedical Research Centre, Addenbrooke's Hospital, Cambridge CB2 0QQ, United Kingdom

Abstract

In 2007, SNPs that cluster in the first intron of *FTO* showed highly significant association in the first two genome-wide association studies for obesity traits of which the minor allele increases body mass index (BMI) by 0.39 kg/m² (or 1,130 g in body weight) and risk of obesity by 1.20 fold. Subsequent studies convincingly confirmed this association across populations of diverse ancestry and throughout the life course, with the largest effect seen in young adulthood. The effect of *FTO* SNPs on obesity traits in African and Asian ancestry populations is similar or somewhat smaller than in European ancestry populations, but the BMI-increasing allele is substantially less prevalent in non-European ancestry populations. *FTO* SNPs do not influence physical activity levels, yet, in physically active individuals, *FTO*'s effect on obesity susceptibility is attenuated by ~30%. Growing evidence from epidemiological and functional studies suggests that *FTO* confers an increased risk of obesity through subtle changes in food intake and preference. In addition, recent emerging data now points to a role for *FTO* in the sensing of nutrients and the regulation of translation and growth. In this review, we explore the genetic epidemiology of *FTO* and discuss how its complex biology might link to the regulation of body weight.

Introduction

An estimated 40 to 70% of the variation in obesity susceptibility observed in the population is due to inter-individual genetic differences.^{1,2} Despite this substantial genetic contribution, the identification of genes associated with obesity traits was, for many years, hampered by a limited understanding of the genetic architecture of the human genome and the biological pathways implicated in obesity.³ However, the advent of the genome-wide association approach in 2005, a hypothesis-free approach made possible through advances in high throughput genotyping technology, has dramatically increased the pace of gene discovery. To date, genome-wide association studies (GWAS) have identified approximately 2,000 genetic loci with robust associations for more than 300 common traits and diseases,^{4,5} including at least 75 obesity-susceptibility loci.^{6,7} *FTO* (fat mass and obesity associated

gene) was the first obesity-susceptibility gene identified through GWAS,^{8,9} and continues to be the locus with the largest effect on body mass index (BMI) and obesity risk, most widely replicated with variety of obesity traits throughout the life course and across diverse ancestries.⁷ Here, we review the discovery of *FTO* as an obesity gene and the insights that have been gained over the past six years through epidemiological and functional follow-up studies to elucidate the biological pathways that underlie the association between *FTO* and obesity.

I. The genetic epidemiology of *FTO*

The discovery of *FTO* as the first obesity susceptibility gene

In 2007, within a time period of three months, two studies claimed the discovery of *FTO* as the first GWAS-identified obesity-susceptibility gene.⁸⁻¹⁰ *FTO* was first discovered through a GWAS of type 2 diabetes in Europeans, comparing 1,924 cases and 2,938 controls.⁸ A cluster of single nucleotide polymorphisms (SNPs) in the first intron of the gene showed highly significant association with risk of type 2 diabetes. However, after adjusting for BMI, the association with type 2 diabetes completely abolished, suggesting that the *FTO* - type 2 diabetes association was mediated through *FTO*'s effect on BMI. Follow-up analyses in 38,759 individuals confirmed the association with BMI and obesity risk.⁸ Eight weeks after the first discovery, a GWAS for BMI in 4,741 Sardinians observed highly significant associations for SNPs from the same intronic cluster in *FTO*, which was subsequently replicated in 2,335 European and Hispanic Americans.⁹ A third study, published at around the same time as the two GWAS, identified the same *FTO* locus serendipitously, while testing for population stratification in their case-control obesity data.¹⁰

Together, these studies firmly established *FTO* as the first gene with common variants that affect obesity susceptibility in the general population.

The *FTO* locus - a cluster of BMI-associated SNPs in *FTO*'s first intron

The two GWAS that first reported on *FTO* as an obesity susceptibility gene each identified a different SNP in the first intron as the most significantly associated with BMI; i.e. rs9939609⁸, rs9930506⁹ (Figure 1b). Subsequent GWAS studies for obesity-related traits in European ancestry populations all confirmed the *FTO* locus, but reported a number of other *FTO* SNPs, located in the same chromosomal region.¹¹⁻²² For example, the most recent GWAS for BMI, which included data from up to 247,796 individuals of European ancestry, found rs1558902 to be most significantly associated SNP ($P_{\text{GWAS}} < 10^{-60}$) as shown in Figure 1a.¹⁶ But also the neighboring SNPs (Figure 1a, in red) show highly significant associations with BMI ($P_{\text{GWAS}} < 10^{-50}$). All these GWAS-identified *FTO* SNPs are part of the same cluster of highly correlated SNPs (linkage disequilibrium (LD) $r^2 > 0.80$) and, as a consequence, they are all highly significantly associated with BMI (Figure 1a) and other obesity related traits. In European ancestry populations, this SNP cluster stretches across ~46,000 base pairs in *FTO*'s first intron that likely harbors the causal variant(s).

The cluster of BMI-associated *FTO* SNPs in East Asian populations is very similar to that of European ancestry populations (Figure 1 b). Three large-scale GWAS in East Asian populations (Korean²³, Chinese²⁴, Japanese²⁵) each identified different *FTO* SNPs

(rs9939609, rs17817449, rs12149832, respectively) as the most significantly associated with BMI, all of which are highly correlated ($r^2 > 0.90$) in East Asian as well as in European ancestry populations (Figure 1b).

However, in populations of African ancestry, the correlation between SNPs in *FTO*'s first intron is substantially weaker than in European or East Asian ancestry populations (Figure 1b). This looser correlation structure provides the opportunity to narrow down to chromosomal region in which the causal variant(s) might be located. For example, a large-scale GWAS in African ancestry populations that combined data from 45,849 individuals, identified rs17817964 as the most significantly BMI-associated *FTO* SNP.²⁶ In populations of European and East Asian ancestry, rs17817964 is part of the same large cluster described above, whereas in African ancestry populations, rs17817964 represents a cluster of much fewer SNPs across a smaller region, thus narrowing the locus that harbors the causal *FTO* variant (Figure 1b). In a targeted fine-mapping effort by the PAGE (Population Architecture using Genomics and Epidemiology) study, genotypes of 3,756 SNPs across a 646kb-region at 16q12.2, encompassing *FTO* and the neighboring *RPGRIP1L*, were tested in more than 20,000 African Americans, identifying rs56137030 as the SNP with the most significant association with BMI.²⁷ In Europeans ancestry populations, this SNP represents a cluster ($r^2_{CEU} > 0.50$) of 103 (of the 3,756) SNPs, whereas in African Americans – due to weaker correlations between SNPs – this cluster includes only 29 SNPs.²⁷ Six of the 29 SNPs locate within intronic regulatory elements, two of which are predicted to have allele-specific binding affinities for different transcription factors, including Cut-like homeobox 1 (*CUX1*) that possibly influences the transcriptional regulation of *FTO*.^{28,29}

Taken together, the BMI-associated *FTO* region, initially identified in European ancestry population, has been narrowed down through taking advantage of a weaker correlation between SNPs in African ancestry populations. These insights will help focus further efforts needed to pinpoint the causal variant(s).

Effect size and explained variance across ancestries

Since the discovery of *FTO* in 2007, at least 75 additional obesity-susceptibility loci have been identified through large-scale GWAS efforts. However, the *FTO* locus stands out, as it has by far the largest effect size, is very common, and has the largest explained variance among individuals of European ancestry. More specifically, each additional minor (risk) allele is associated with a 0.39 kg/m² higher BMI (equivalent to 1,130 g for a person of 1.70m tall) and a 1.20 fold increased risk of obesity (Table 1).¹⁶ Approximately 43% of the population carries one risk allele and 20% carries two risk alleles, with small variations in genotype frequencies within European ancestry populations (Figure 2). Of all BMI-associated loci identified thus far, the *FTO* locus explains the most of the inter-individual variation in BMI, yet only a mere 0.34%.¹⁶ As a consequence, the ability to predict a person's risk of obesity based on their *FTO* genotype is poor and only slightly better than tossing a coin.³⁰

Soon after the discovery of *FTO* in European ancestry populations, many replication efforts examined its effects in non-European ancestry populations, showing convincing support for the generalizability of *FTO* as an obesity-susceptibility locus across most ancestries studied

so far. The most consistent replications have been observed for Asian ancestry populations. Besides the fact that the three large-scale GWAS in East Asians identified *FTO* SNPs as the most significantly associated with BMI²³⁻²⁵, targeted efforts consistently confirmed association with obesity-related traits in Chinese,³¹⁻³⁹ Japanese,⁴⁰⁻⁴⁴ Koreans,^{45,46} Vietnamese,⁴⁷ Filipino,⁴⁸ Malays,³¹ and Indian Asians.⁴⁹⁻⁵⁷ A meta-analysis that combined data of 96,551 individuals of Asian ancestry, showed that each additional minor allele increases risk of obesity (using Asian BMI cut-offs) by 1.25 fold, which is similar to effects observed in European ancestry populations.⁵⁸ BMI increases by 0.26 kg/m² (equivalent to 750g for a person 1.7m tall) for each additional minor allele,⁵⁸ which is substantially less than in European ancestry populations and might reflect the fact that BMI represents a somewhat different adiposity phenotype in different Asians. Effect sizes of East and South Asians were not significantly different, but the minor allele frequency was lower in East Asians (Chinese Hans and Koreans: 12-14%; Japanese and Filipinos: 18-20%) than in South Asians (30-33%), which both are lower than in Europeans (42%) (Table 1). As a consequence of the smaller effect size and lower minor allele frequency (Figure 2), *FTO* SNPs in Asian populations explain less of the variation in BMI (0.16–0.20%) than in European ancestry populations.⁵⁸

Results of targeted replication of *FTO* in Africans and African Americans have been inconsistent,^{27,59-74} which may be due to the substantial differences in correlation structure between *FTO* SNPs in African compared to European/Asian ancestry populations (Figure 1b). As such, an *FTO* SNP that is part of the larger ‘European/Asian’ cluster, but that does not overlap with the ‘African’ cluster, will likely not show association with obesity related traits. However, in the recent large-scale GWAS in African ancestry populations, SNPs in *FTO* were among the most significantly associated with BMI, firmly establishing *FTO* as an obesity-susceptibility locus also in this ancestry.²⁶ While *FTO*'s effect on BMI was similar to that observed in European ancestry populations, the minor allele frequency was much lower (12%) (Figure 2), such that only 0.10% of the variation of BMI in African ancestry populations was explained (Table 1).²⁶

SNPs in *FTO* also show association with obesity-related traits in Hispanic/Latino populations⁷⁴⁻⁷⁷ and in Pima Indians.⁷⁸

Taken together, SNPs in *FTO* show association with obesity-related traits across many ancestries. Noteworthy is that the genotype frequency distribution of the BMI-associated *FTO* SNPs differs substantially across ancestries, with the highest prevalence of minor (risk) allele carriers observed in European ancestry populations, and substantially fewer in Asian and African ancestry populations (Figure 2).

FTO and obesity risk over the life course

Although *FTO* was first discovered as an obesity-susceptibility locus in adults,⁸⁻¹⁰ its associations with obesity related traits were promptly confirmed in studies of children and adolescents.^{8,19-21,38,39,56,59-61,79-89}

While SNPs in *FTO* do not influence birth weight⁸⁸⁻⁹², longitudinal studies have shown that they affect body weight already during early childhood, as early as age 3yrs, after which

FTO's effect increases to reach its largest impact at around young adulthood, followed by a subsequent weakening of the effect throughout adulthood.^{86-90,93,94}

The role of lifestyle factors in the association between *FTO* and obesity-susceptibility

To gain insight in the potential mechanisms through which variation in *FTO* leads to increased risk of obesity, many studies examined whether *FTO* SNPs associate with food intake and physical activity as the two major mediators of body weight regulation.

The evidence supporting a role for *FTO* in the regulation of food intake is slowly growing. The BMI-increasing allele of *FTO* SNPs has been found to be associated with increased energy intake,^{80,95-97} increased intake of dietary fat^{96,98,99} or protein^{97,100}, increased appetite and reduced satiety,^{101,102} poor food choices and eating habits,^{103,104} and loss of control over eating.¹⁰⁵ A recent GWAS of macronutrient intake in more than 70,000 individuals identified the BMI-increasing allele of *FTO* SNPs to be highly significantly associated with increased protein intake.¹⁰⁶ Despite the growing evidence, other studies have not been able to confirm associations with dietary traits.^{43,60,107-111}

Studies have consistently shown that *FTO* SNPs are not associated with physical activity levels,^{43,100,110-114} which has been convincingly confirmed in a large-scale meta-analysis of published and unpublished data of 218,166 adults and 19,268 children.¹¹⁵ Although physical activity does not seem to mediate the association between *FTO* and obesity-susceptibility, this meta-analysis showed that the effect of *FTO* on BMI and obesity risk is approximately 30% smaller in physically active than in sedentary individuals, at least in adults,¹¹⁵ thereby firmly confirming observations of a growing number of individual studies.^{43,73,112-114,116,117} This observation emphasizes the importance of physical activity in body weight regulation in adults, showing that even those who are genetically susceptible benefit from being active. It remains unclear what the biological mechanisms are behind the observed interaction between physical activity and *FTO* and whether this effect attenuation is observed only with physical activity or also with other lifestyle factors. Some studies have suggested that also dietary habits and energy intake^{97,100,108} and smoking⁷² might attenuate the effects of *FTO* on obesity susceptibility. Variants in the first intron of *FTO* have been shown to be associated with methylation capability, such that some have speculated that this region might be sensitive to epigenetic effects.¹¹⁸⁻¹²⁰

Thus, while studying lifestyle factors such as physical activity and food intake is challenging because of the inaccuracy of their measurement, there is growing evidence that physical activity attenuates the association between *FTO* and obesity susceptibility, whereas food intake might be mediating this association. It remains to be confirmed which components of food intake are predominantly targeted by *FTO*.

***FTO* and obesity-related comorbidities**

Obesity is an important risk factor for cardiovascular and metabolic disease. Hence, it comes as no surprise that, because of the robust association between *FTO* and BMI, *FTO* SNPs are also associated with a range of cardiometabolic traits.^{16,121,122} In a recent large-scale meta-analysis of 36 studies (n = up to 198,502) that examined *FTO*'s effects on 24

cardiometabolic traits, the BMI-increasing allele of the *FTO* SNP was associated with increased risk of type 2 diabetes, heart failure, coronary heart disease, ever all-cause and ischemic stroke, hypertension, dyslipidemia, metabolic syndrome, and mortality, and also with increased fasting glucose and insulin levels, 2h-OGTT glucose levels, HbA1c, blood pressure, lipid levels, liver enzymes, and inflammation markers.¹²² For most traits, these associations were fully mediated through *FTO*'s effect on BMI.¹²² However, there was evidence that *FTO* may, at least in part, increase the risk of type 2 diabetes independently of its effect on BMI,¹²² which is consistent with earlier observations.^{57,58,123}

Obesity is also considered a risk factor for certain cancers, which motivated researchers to also test whether the BMI-associated *FTO* SNPs associated with cancer. While some studies found *FTO* SNPs to influence the risk of some cancers,¹²⁴⁻¹³⁰ others could not confirm this.¹³¹⁻¹³⁴ Interestingly, two recent large-scale GWAS identified SNPs in the second and eighth intron of *FTO* to be robustly associated with risk of estrogen receptor negative breast cancer¹³⁵ and melanoma,¹³⁶ respectively. These two cancer-associated *FTO* loci are independent ($LD r^2_{CEU} < 0.10$) from each other and from the BMI-associated locus in the first intron. Their association with cancer risk was not mediated through an effect on BMI,^{135,136} indicating that *FTO*'s function reaches beyond body weight regulation.

***FTO* mutations and obesity risk**

So far, three studies have examined whether rare variants in *FTO* are disproportionately represented in obese or lean individuals through sequencing of the exons.¹³⁷⁻¹³⁹ Together, they identified at least 45 low-frequency coding variants, but none of the studies found evidence of an enrichment of any of these variants, individually or combined, in either obese or lean individuals, even though some of the variants are predicted to have deleterious effects of *FTO*'s function.¹³⁷⁻¹³⁹

II. The biology of *FTO*

***FTO* is a nucleic acid demethylase**

Soon after its identification, utilizing bioinformatics tools, *FTO* was predicted to be a 2-oxyglutarate (2-OG) Fe(II) dependent demethylase, closely related to the bacterial DNA demethylase AlkB and the mammalian AlkB homologues 1 & 2 (ABH1 and ABH2).¹⁴⁰ *In vitro*, recombinant *FTO* is able to catalyze the Fe(II)- and 2OG-dependent demethylation of 3-methylthymine in single-stranded DNA,^{140,141} as well as 3-methyluracil (3meU)^{140,141} and 6-methyl adenosine (6meA)¹⁴² in single-stranded RNA, suggesting a potential role for *FTO* in nucleic acid repair or modification. The crystal structure of *FTO* is available and shows an N-terminal catalytic domain and a C-terminal domain of unknown function.¹⁴³ The catalytic pocket contains five obligate amino acid residues found in all members of this enzyme superfamily; two residues, a histidine (H) and an aspartic acid (D), required for binding Fe(II); and three residues, an H and two arginines (R) separated by six amino acids, required for 2OG binding.^{137,143} The specificity for single stranded nucleic acids is provided by an L1 loop, not present in other members of the AlkB family, which sterically hinders double stranded nucleic acids from entering the catalytic pocket.¹⁴³

FTO demethylates 6meA, which is the most common modified nucleoside found in mRNA,¹⁴⁴ with 50-fold greater affinity than 3meU,¹⁴² is found largely in ribosomal RNA.¹⁴⁵ However, because the vast majority of total RNA is rRNA, there are in absolute terms actually a hundred fold more 3meU than 6meA in any given cell. The question of whether one or both of these modified bases are the endogenous substrate/s for FTO is still not entirely clear.

FTO deficiency

There are several examples where common variants close to a particular gene, such as *MCR4*,^{11,146-148} *POMC*,^{149,150} *BDNF*,^{13,151} and *PCSK1*,^{152,153} are associated with alterations in risk of common phenotypes such as fat mass or risk of obesity, whereas rare loss-of-function mutations in these same genes result in highly penetrant severe early onset obesity. FTO however, has proven to be far more complicated. *Fto* was originally identified as one of six contiguous genes in a 1.6Mb deletion causing the 'fused-toe' phenotype.¹⁵⁴ This deletion included not only *FTO*, but also *Ftm*, *Ftl* and the Iroquois B cluster consisting of *Irx3*, 5, and 6. Homozygotes are embryonically lethal, while heterozygous fused toes mutants display severe developmental defects including left-right asymmetry,¹⁵⁵ defects in hypothalamic development,^{155,156} as well as fused digits and hyperplasia of the thymus without any metabolic alterations. In contrast, mice with a specific targeted deletion of *Fto* did not display these severe developmental abnormalities, but exhibited a phenotype of postnatal growth retardation, decreased fat and lean body mass, and elevated food intake when corrected for lean body mass.¹⁵⁷ There was also a significant level of post-natal lethality, with only 50% of homozygous pups reaching weaning age.^{157,158}

In humans, a loss-of-function mutation in *FTO* leads to an even more complex phenotype of postnatal growth retardation, microcephaly, severe psychomotor delay, functional brain deficits, and characteristic facial dysmorphism.¹⁵⁹ In some patients, structural brain malformations, cardiac defects, genital anomalies, and cleft palate were also observed. The R316Q mutation, which disrupts one of the obligate arginines necessary for 2-OG binding, results in loss of FTO's demethylase activity. The importance of FTO's ability to demethylate is underlined not only by the severe phenotype detailed above, but also by the tragic fact that none of the affected individuals survived past the age of 30 months.¹⁵⁹ So in both humans and mice, a fully functional FTO certainly appears to be critical for normal physiology.

Is it FTO?

Given the very close proximity of the risk SNPs to the transcriptional start site of *RPGRIP1L* (human ortholog of mouse *Ftm*), which is adjacent to and coded for on the opposite DNA strand to *FTO*,²⁸ it was reasonable to query the possible role of *RPGRIP1L* in the control of body-weight. There were two main reasons why the focus of study began with *FTO* and not *RPGRIP1L*. Firstly, while *FTO* was found to be nutritionally regulated within the hypothalamus,¹⁴⁰ this was not true for *RPGRIP1L*, which is known to localize in the primary cilia and centrosomes of ciliated cells. Secondly, human defects in *RPGRIP1L* exist and cause Joubert syndrome type 7 (JBTS), which presents clinically with cerebellar and brainstem malformation and renal failure.¹⁶⁰ The patients do not present with any obvious

body weight-related phenotypes, with the caveat that any potential 'lean' phenotype is difficult to ascertain in a healthy individual, let alone someone who is severely ill. Deletion of the mouse ortholog *Rpgrip11* (*Ftm*) recapitulates the cerebral, renal and hepatic defects seen in Joubert's patients.¹⁶⁰

There is evidence for co-regulatory mechanisms between *FTO* and *RPGRIP1L*, with a possible overlapping regulatory region within intron 1 of *FTO* that contains at least two putative transcription factor binding sites (CUX1), as mentioned above, one of which overlaps with other obesity associated SNPs.^{27,28} It remains a possibility that the association between *FTO* SNPs and body weight regulation is mediated through changing the expression of both *FTO* and *RPGRIP1L*.

Perturbation of FTO expression points to role in energy homeostasis

Even despite the severe phenotype seen in *FTO* deficiency however, there are compelling pieces of evidence that support a role of *FTO* in the control of energy homeostasis. For one thing, *Fto*^{-/-} mice have an apparent hyperphagia, and there is the fact that *Fto*^{+/-} mice are resistant to high-fat diet induced obesity.¹⁵⁷

Church and colleagues have generated a 'knock-in' mouse model carrying one or two additional copies of *Fto*, and show that ubiquitous overexpression of *FTO* leads to a dose-dependent increase in body and fat mass, irrespective of whether mice are fed a standard or a high-fat diet.¹⁶¹ That said, although the increase in weight with the overexpression of *FTO* seems consistent with the 'lean' phenotype of *FTO* deficiency, the increase in food intake seen in these mice is not. At 8 weeks, the mice overexpressing *Fto* do have reduced fasting leptin levels, which is odd given that obese mice with increased fat mass are normally expected to have increased leptin levels. One could speculate that the hyperphagic phenotype seen in this model is driven by the hypo-leptinaemia.

FTO is expressed ubiquitously in human and animal tissues,¹⁴⁰ which is consistent with multiple organ systems being affected in *FTO* deficiency. Its highest expression is seen in the brain, including the hypothalamus, where control of food intake is centred¹⁴⁰. As touched on above, within the arcuate nucleus of the hypothalamus (ARC), *FTO* is bi-directionally regulated as a function of nutritional status; decreasing following a 48hr fast¹⁴⁰ and increasing after 10 weeks of exposure to a high fat diet, while modulating *FTO* levels specifically in the ARC can influence food intake.¹⁶²

Thus, although there are some inconsistencies between the different mouse models to be worked out, the weight of evidence supports the notion that *FTO* itself can influence energy homeostasis by having direct effect on food intake. These findings are in keeping with the association between the *FTO* risk alleles and increase in food intake. Central nervous system (CNS) specific *Fto* deleted mice have now been generated.¹⁶³ Surprisingly, these brain-specific *Fto* deficient mice recapitulate much of the phenotype of the whole-body knock-outs,¹⁶³ suggesting that an important proportion of *FTO*'s function, particularly its link to the regulation of energy homeostasis is mediated in the brain.

FTO as a nutrient sensor?

Given the evidence above that FTO is nutritionally regulated and can influence food intake, could FTO be acting as a nutrient sensor? Initial attention focused on 2-OG, a key intermediate in the citric-acid cycle, and a co-substrate of FTO. It was plausible that FTO could function as a sensor for intracellular concentrations of this metabolite and thus cellular metabolism. However, since typical intracellular concentrations of 2-OG are more than 10-fold higher than its calculated K_m of 2.88 μ M, it is unlikely that FTO's physiological role is to sense 2-OG, even if it is required as a co-factor for FTO activity.¹⁶⁴

FTO mRNA and protein levels however, are dramatically down-regulated by total amino-acid deprivation mouse and human cell-lines.¹⁶⁵ Strikingly, this regulation was seen only with essential amino-acids, suggesting that FTO might play a role in the sensing of essential amino-acid availability.¹⁶⁵ Could the regulation of FTO expression by amino acids then be linked to the growth retardation phenotype seen in FTO deficiency?

FTO links amino acid availability and mTORC1 signaling to regulate growth and translation

In a recent study, it was shown that mouse embryonic fibroblasts (MEFs) derived from *Fto*^{-/-} mice exhibit slower rates of growth and have reduced mRNA translation when compared to WT MEFs.¹⁶⁶ This seems to occur, at least in part, by maintenance of levels of Aminoacyl-tRNA synthetases (AARSs), as part of a large multimer complex known as the Multi-Synthetase Complex (MSC),¹⁶⁷ which tether free amino-acids to their cognate tRNAs and are one of the key modulators of translation. Consistent with the reduced rates of translation, *Fto*^{-/-} MEFs have reduced protein levels of MSC components. The defects in mRNA translation and reduced levels of MSC components in *Fto*^{-/-} MEFs are rescued by re-expressing FTO in these cells, implicating a role for FTO in regulating translation rates through maintenance of MSC protein levels within the cell.¹⁶⁶

In addition, cells lacking FTO display decreased activation of the mTORC1 pathway and increased autophagy, all of which makes mechanistic sense in explaining the growth retardation phenotype seen in *Fto*^{-/-} mice¹⁵⁷ and in humans homozygous for loss-of-function *FTO* mutations.¹⁵⁹ The dramatic regulation of FTO by AAs¹⁶⁵ seems to be necessary for the cellular response to changing AA levels, as expression of exogenous FTO in cells renders them insensitive to AA deprivation by preventing the expected reduction in mTORC1 signaling.¹⁶⁶

Thus, a cell without FTO is one that thinks it is starving of amino acids, reducing mTORC1 signaling and increasing autophagy in an effort to ensure cellular survival by maintaining cellular energy levels. The consequence of this in a whole organism is clearly illustrated in another recent study, when a targeted deletion of *Fto* in adult mice results in a loss of body weight, with all of the change in weight down to a dramatic loss in lean mass.¹⁵⁸ As skeletal muscle is the largest depot of protein in the body, it appears to be the most sensitive to the sudden removal of FTO and subsequent increase in autophagy. In contrast, when FTO is postnatally deleted specifically from the mediobasal hypothalamus, there is a more subtle weight loss, resulting from a change in food intake.¹⁵⁸

FTO and the 6meA methylome

Critically, the link between AA availability and mTORC1 signaling is dependent upon FTO's demethylase activity, although the question of how and why this occurs remains to be answered¹⁶⁶. One possibility could involve FTO's ability to demethylate 6meA. Using antibodies against 6meA to immunoprecipitate human and mouse transcripts that carry the modification and coupling this to RNA-seq, two recently published studies have mapped the presence of 6meA in a transcriptome-wide manner.^{168,169} 6meAs, as it turns out, are common, enriched near stop-codons, highly conserved between mice and man, and are dynamically, developmentally and tissue specifically regulated. These studies have far reaching implications, as the decoration of 6meA at appropriate mRNA sites appears to play a fundamental regulatory role in gene expression, in addition to exerting varying effects on mRNA splicing and transport. To date, methyltransferase like 3 (METTL3) is the only enzyme identified to catalyse the conversion of adenosine to 6meA,¹⁷⁰ while two enzymes are known to catalyse the removal of this methyl group; one is ALKBH5¹⁷¹ and the other is FTO. In fact, Meyer and colleagues show that transient overexpression of FTO in HEK293 cells decreases the total amount of 6meA found in the transcriptome¹⁶⁹.

A recent paper has demonstrated that FTO does not globally target all 6meA-modified mRNAs but instead demethylates specific mRNA subsets¹⁷². They show for instance, that the midbrain and striatum of *Fto*^{-/-} mice show increased methylation in mRNAs from genes encoding components of the dopamine signalling pathway, resulting in reduced dopaminergic signalling tone¹⁷². Outside of the brain, FTO risk alleles have also been reported to influence the methylation status of ghrelin mRNA. By doing so, Karra and colleagues have postulated that FTO may affect levels of circulating ghrelin. Further studies will be required to determine the extent to which changes in dopamine and/or ghrelin signalling could be effectors of FTO's association with increased BMI.¹⁷³

Future Perspectives

So how do the findings on the biochemical function of FTO relate to the association between FTO SNPs and obesity? In truth, we still do not know. In particular, little is known about if or how the *FTO* risk alleles are influencing the FTO protein. Considering their intronic location, they are unlikely to cause functional mutations, but are more likely to be playing a subtle transcriptional regulatory role, either to up- or down-regulate FTO expression.

What we do know is that FTO is most highly expressed in the brain, where the sensing of amino acids can influence the activity of pathways controlling food intake. We would hypothesize that subtle effects of the risk alleles on expression of FTO in key brain regions, such as the hypothalamus, are likely to influence the way in which these cells sense amino acid levels. As we discuss above, there is evidence that human carriers of the susceptible SNPs in *FTO* not only consume more food, but also show an alteration in nutrient preference, perhaps suggesting that FTO status can influence the central sensing of dietary macronutrient composition. Thus the role of FTO in amino acid sensing may provide some clues towards understanding the cellular basis for this physiological phenomenon.

Given the fact that a substantial proportion of the world's population have their bodyweight subtly influenced by SNPs in *FTO*, can *FTO* ever be considered a realistic pharmaceutical target? Given its ubiquitous expression, the severity of the phenotype seen in human and murine *FTO* deficiency, and the fact that adult deletion of *FTO* results in a dramatic loss of muscle mass, we believe it is unlikely. However, the understanding of *FTO* biology could potentially reveal novel therapeutic targets in our battle against the increasing epidemic of obesity. We also believe that the efforts to date in turning the statistical association of *FTO* with BMI into a deeper understanding of its biology and could form a template into how we approach the many other emerging GWAS obesity genes of unknown function.

References

1. Elks CE, et al. Variability in the heritability of body mass index: a systematic review and meta-regression. *Front Endocrinol.* 2012; 3:29.
2. Maes HH, Neale MC, Eaves LJ. Genetic and environmental factors in relative body weight and human adiposity. *Behav Genet.* 1997; 27:325–51. [PubMed: 9519560]
3. Loos, RJF. *Adipose Tissue Biology*. Symonds, ME., editor. Springer; 2012. p. 317–378.
4. Hindorff LA, et al. Potential etiologic and functional implications of genome-wide association loci for human diseases and traits. *Proceedings of the National Academy of Sciences of the United States of America.* 2009; 106:9362–9367. [PubMed: 19474294]
5. Hindorff LA, Junkins HA, Hall PN, Mehta JP, Manolio TA. 2013
6. Day FR, Loos RJ. Developments in obesity genetics in the era of genome-wide association studies. *J Nutrigenet Nutrigenomics.* 2011; 4:222–38. [PubMed: 22056736]
7. Lu Y, Loos RJ. Obesity genomics: assessing the transferability of susceptibility loci across diverse populations. *Genome Med.* 2013; 5:55. [PubMed: 23806069]
8. Frayling TM, et al. A Common Variant in the *FTO* Gene Is Associated with Body Mass Index and Predisposes to Childhood and Adult Obesity. *Science.* 2007; 316:889–894. [PubMed: 17434869]
9. Scuteri A, et al. Genome-Wide Association Scan Shows Genetic Variants in the *FTO* Gene Are Associated with Obesity-Related Traits. *PLoS Genetics.* 2007; 3:e115. [PubMed: 17658951]
10. Dina C, et al. Variation in *FTO* contributes to childhood obesity and severe adult obesity. *Nat Genet.* 2007; 39:724–726. [PubMed: 17496892]
11. Loos RJ, et al. Common variants near *MC4R* are associated with fat mass, weight and risk of obesity. *Nat Genet.* 2008; 40:768–75. [PubMed: 18454148]
12. Willer CJ, et al. Six new loci associated with body mass index highlight a neuronal influence on body weight regulation. *Nat Genet.* 2009; 41:25–34. [PubMed: 19079261]
13. Thorleifsson G, et al. Genome-wide association yields new sequence variants at seven loci that associate with measures of obesity. *Nat Genet.* 2009; 41:18–24. [PubMed: 19079260]
14. Lindgren CM, et al. Genome-Wide Association Scan Meta-Analysis Identifies Three Loci Influencing Adiposity and Fat Distribution. *PLoS Genet.* 2009; 5:e1000508. [PubMed: 19557161]
15. Heard-Costa NL, et al. *NRXN3* Is a Novel Locus for Waist Circumference: A Genome-Wide Association Study from the CHARGE Consortium. *PLoS Genet.* 2009; 5:e1000539. [PubMed: 19557197]
16. Speliotes EK, et al. Association analyses of 249,796 individuals reveal 18 new loci associated with body mass index. *Nat Genet.* 2010; 42:937–948. [PubMed: 20935630]
17. Kilpelainen TO, et al. Genetic variation near *IRS1* associates with reduced adiposity and an impaired metabolic profile. *Nat Genet.* 2011; 43:753–60. [PubMed: 21706003]
18. Berndt SI, et al. Genome-wide meta-analysis identifies 11 new loci for anthropometric traits and provides insights into genetic architecture. *Nat Genet.* 2013; 45:501–12. [PubMed: 23563607]
19. Meyre D, et al. Genome-wide association study for early-onset and morbid adult obesity identifies three new risk loci in European populations. *Nat Genet.* 2009; 41:157–159. [PubMed: 19151714]

20. Scherag A, et al. Two New Loci for Body-Weight Regulation Identified in a Joint Analysis of Genome-Wide Association Studies for Early-Onset Extreme Obesity in French and German Study Groups. *PLoS Genet.* 2010; 6:e1000916. [PubMed: 20421936]
21. Bradfield JP, et al. A genome-wide association meta-analysis identifies new childhood obesity loci. *Nat Genet.* 2012; 44:526–31. [PubMed: 22484627]
22. Wheeler E, et al. Genome-wide SNP and CNV analysis identifies common and low-frequency variants associated with severe early-onset obesity. *Nat Genet.* 2013; 45:513–7. [PubMed: 23563609]
23. Cho YS, et al. A large-scale genome-wide association study of Asian populations uncovers genetic factors influencing eight quantitative traits. *Nat Genet.* 2009; 41:527–534. [PubMed: 19396169]
24. Wen W, et al. Meta-analysis identifies common variants associated with body mass index in east Asians. *Nat Genet.* 2012; 44:307–11. [PubMed: 22344219]
25. Okada Y, et al. Common variants at CDKAL1 and KLF9 are associated with body mass index in east Asian populations. *Nat Genet.* 2012; 44:302–6. [PubMed: 22344221]
26. Monda KL, et al. A meta-analysis identifies new loci associated with body mass index in individuals of African ancestry. *Nat Genet.* 2013; 45:690–696. [PubMed: 23583978]
27. Peters U, et al. A systematic mapping approach of 16q12.2/FTO and BMI in more than 20,000 African Americans narrows in on the underlying functional variation: results from the Population Architecture using Genomics and Epidemiology (PAGE) study. *PLoS Genet.* 2013; 9:e1003171. [PubMed: 23341774]
28. Stratigopoulos G, et al. Regulation of Fto/Ftm gene expression in mice and humans. *Am J Physiol Regul Integr Comp Physiol.* 2008; 294:R1185–96. [PubMed: 18256137]
29. Stratigopoulos G, LeDuc CA, Cremona ML, Chung WK, Leibel RL. Cut-like homeobox 1 (CUX1) regulates expression of the fat mass and obesity-associated and retinitis pigmentosa GTPase regulator-interacting protein-1-like (RPGRIPL) genes and coordinates leptin receptor signaling. *Journal of Biological Chemistry.* 2011; 286:2155–70. [PubMed: 21037323]
30. Li S, et al. Cumulative effects and predictive value of common obesity-susceptibility variants identified by genome-wide association studies. *American Journal of Clinical Nutrition.* 2010; 91:184–190. [PubMed: 19812171]
31. Tan JT, et al. FTO variants are associated with obesity in the Chinese and Malay populations in Singapore. *Diabetes.* 2008; 57:2851–2857. [PubMed: 18599522]
32. Liu Y, et al. Meta-analysis Added Power to Identify Variants in FTO Associated With Type 2 Diabetes and Obesity in the Asian Population. *Obesity.* 2010; 18:1619–1624. [PubMed: 20057365]
33. Ng MCY, et al. Implication of Genetic Variants Near NEGR1, SEC16B, TMEM18, ETV5/DGKG, GNPDA2, LIN7C/BDNF, MTCH2, BCDIN3D/FAIM2, SH2B1, FTO, MC4R, and KCTD15 with Obesity and Type 2 Diabetes in 7705 Chinese. *Journal of Clinical Endocrinology Metabolism.* 2010; 95:2418–2425. [PubMed: 20215397]
34. Chang YC, et al. Common variation in the fat mass and obesity-associated (FTO) gene confers risk of obesity and modulates BMI in the Chinese population. *Diabetes.* 2008; 57:2245–2252. [PubMed: 18487448]
35. Shi J, et al. Evaluation of genetic susceptibility loci for obesity in Chinese women. *Am J Epidemiol.* 2010; 172:244–54. [PubMed: 20616199]
36. Sun Y, Sun J, Wang X, You W, Yang M. Variants in the fat mass and obesity associated (FTO) gene are associated with obesity and C-reactive protein levels in Chinese Han populations. *Clinical and Investigative Medicine. Medecine Clinique et Experimentale.* 2010; 33:E405–12. [PubMed: 21134343]
37. Wang J, et al. Study of eight GWAS-identified common variants for association with obesity-related indices in Chinese children at puberty. *Int J Obes.* 2012; 36:542–7.
38. Wu L, et al. Associations of six single nucleotide polymorphisms in obesity-related genes with BMI and risk of obesity in Chinese children. *Diabetes.* 2010; 59:3085–9. [PubMed: 20843981]
39. Xi B, et al. Associations of obesity susceptibility loci with hypertension in Chinese children. *Int J Obes.* 2013

40. Hotta K, et al. Variations in the FTO gene are associated with severe obesity in the Japanese. *J Hum Genet.* 2008; 53:546–553. [PubMed: 18379722]
41. Omori S, et al. Association of CDKAL1, IGF2BP2, CDKN2A/B, HHEX, SLC30A8, and KCNJ11 with susceptibility to type 2 diabetes in a Japanese population. *Diabetes.* 2008; 57:791–795. [PubMed: 18162508]
42. Tabara Y, et al. Prognostic significance of FTO genotype in the development of obesity in Japanese: the J-SHIP study. *Int J Obes.* 2009; 33:1243–1248.
43. Karasawa S, et al. Association of the Common Fat Mass and Obesity Associated (FTO) Gene Polymorphism with Obesity in a Japanese Population. *Endocrine Journal.* 2010; 57:293–301. [PubMed: 20051647]
44. Takeuchi F, et al. Association of genetic variants for susceptibility to obesity with type 2 diabetes in Japanese individuals. *Diabetologia.* 2011; 54:1350–9. [PubMed: 21369819]
45. Cha SW, et al. Replication of genetic effects of FTO polymorphisms on BMI in a Korean population. *Obesity.* 2008; 16:2187–2189. [PubMed: 18551112]
46. Hong KW, Oh B. Recapitulation of genome-wide association studies on body mass index in the Korean population. *Int J Obes.* 2012; 36:1127–30.
47. Binh TQ, et al. Association of the common FTO-rs9939609 polymorphism with type 2 diabetes, independent of obesity-related traits in a Vietnamese population. *Gene.* 2013; 513:31–5. [PubMed: 23142383]
48. Croteau-Chonka DC, et al. Genome-Wide Association Study of Anthropometric Traits and Evidence of Interactions With Age and Study Year in Filipino Women. *Obesity.* 2011; 19:1019–1027. [PubMed: 20966902]
49. Yajnik C, et al. FTO gene variants are strongly associated with type 2 diabetes in South Asian Indians. *Diabetologia.* 2009; 52:247–252. [PubMed: 19005641]
50. Ramya K, Radha V, Ghosh S, Majumder PP, Mohan V. Genetic variations in the FTO gene are associated with type 2 diabetes and obesity in south Indians (CURES-79). *Diabetes Technol Ther.* 2011; 13:33–42. [PubMed: 21175269]
51. Taylor AE, et al. Associations of FTO and MC4R Variants with Obesity Traits in Indians and the Role of Rural/Urban Environment as a Possible Effect Modifier. *J Obes.* 2011; 2011:307542. [PubMed: 21785715]
52. Chauhan G, et al. Common variants of FTO and the risk of obesity and type 2 diabetes in Indians. *J Hum Genet.* 2011; 56:720–6. [PubMed: 21814223]
53. Vasan SK, et al. Associations of variants in FTO and near MC4R with obesity traits in South Asian Indians. *Obesity.* 2012; 20:2268–77. [PubMed: 22421923]
54. Sanghera D, et al. Impact of nine common type 2 diabetes risk polymorphisms in Asian Indian Sikhs: PPARG2 (Pro12Ala), IGF2BP2, TCF7L2 and FTO variants confer a significant risk. *BMC Medical Genetics.* 2008; 9:59. [PubMed: 18598350]
55. Moore SC, et al. Common genetic variants and central adiposity among Asian-Indians. *Obesity.* 2012; 20:1902–8. [PubMed: 21799482]
56. Dwivedi OP, et al. Common variants of FTO are associated with childhood obesity in a cross-sectional study of 3,126 urban Indian children. *PLoS ONE.* 2012; 7:e47772. [PubMed: 23091647]
57. Rees SD, et al. An FTO variant is associated with Type 2 diabetes in South Asian populations after accounting for body mass index and waist circumference. *Diabet Med.* 2011; 28:673–80. [PubMed: 21294771]
58. Li H, et al. Association of genetic variation in FTO with risk of obesity and type 2 diabetes with data from 96,551 East and South Asians. *Diabetologia.* 2012; 55:981–95. [PubMed: 22109280]
59. Grant SFA, et al. Association Analysis of the FTO Gene with Obesity in Children of Caucasian and African Ancestry Reveals a Common Tagging SNP. *PLoS ONE.* 2008; 3:e1746. [PubMed: 18335027]
60. Liu G, et al. FTO variant rs9939609 is associated with body mass index and waist circumference, but not with energy intake or physical activity in European- and African-American youth. *BMC Medical Genetics.* 2010; 11:57. [PubMed: 20377915]

61. Graff M, et al. Estimation of genetic effects on BMI during adolescence in an ethnically diverse cohort: The National Longitudinal Study of Adolescent Health. *Nutr Diabetes*. 2012; 2:e47. [PubMed: 23168566]
62. Adeyemo A, et al. FTO Genetic Variation and Association With Obesity in West Africans and African Americans. *Diabetes*. 2010; 59:1549–1554. [PubMed: 20299471]
63. Hennig B, et al. FTO gene variation and measures of body mass in an African population. *BMC Medical Genetics*. 2009; 10:21. [PubMed: 19265514]
64. Hassanein MT, et al. Fine mapping of the association with obesity at the FTO locus in African-derived populations. *Human Molecular Genetics*. 2010; 19:2907–2916. [PubMed: 20430937]
65. Bressler J, Kao WHL, Pankow JS, Boerwinkle E. Risk of Type 2 Diabetes and Obesity Is Differentially Associated with Variation in FTO in Whites and African-Americans in the ARIC Study. *PLoS ONE*. 2010; 5:e10521. [PubMed: 20502638]
66. Avery CL, et al. A phenomics-based strategy identifies loci on APOC1, BRAP, and PLCG1 associated with metabolic syndrome phenotype domains. *PLoS Genet*. 2011; 7:e1002322. [PubMed: 22022282]
67. Cauchi S, et al. European genetic variants associated with type 2 diabetes in North African Arabs. *Diabetes and Metabolism*. 2012; 38:316–23. [PubMed: 22463974]
68. Hallman DM, et al. The association of variants in the FTO gene with longitudinal body mass index profiles in non-Hispanic white children and adolescents. *Int J Obes*. 2012; 36:61–8.
69. Lombard Z, et al. Appetite regulation genes are associated with body mass index in black South African adolescents: a genetic association study. *BMJ Open*. 2012; 2:e000873.
70. Hester JM, et al. Implication of European-derived adiposity loci in African Americans. *Int J Obes*. 2012; 36:465–73.
71. Ng MC, et al. Genome-wide association of BMI in African Americans. *Obesity*. 2012; 20:622–7. [PubMed: 21701570]
72. Fesinmeyer MD, et al. Effects of smoking on the genetic risk of obesity: the population architecture using genomics and epidemiology study. *BMC Med Genet*. 2013; 14:6. [PubMed: 23311614]
73. Demerath EW, et al. Interaction of FTO and physical activity level on adiposity in African-American and European-American adults: the ARIC study. *Obesity*. 2011; 19:1866–72. [PubMed: 21593801]
74. Wing MR, et al. Analysis of FTO gene variants with measures of obesity and glucose homeostasis in the IRAS Family Study. *Human Genetics*. 2009; 125:615–26. [PubMed: 19322589]
75. Villalobos-Comparan M, et al. The FTO gene is associated with adulthood obesity in the Mexican population. *Obesity*. 2008; 16:2296–2301. [PubMed: 18719664]
76. Dong C, et al. Genome-wide linkage and peak-wide association study of obesity-related quantitative traits in Caribbean Hispanics. *Human Genetics*. 2011; 129:209–19. [PubMed: 21104097]
77. Song Y, et al. FTO polymorphisms are associated with obesity but not diabetes risk in postmenopausal women. *Obesity*. 2008; 16:2472–80. [PubMed: 18787525]
78. Rong R, et al. Association Analysis of Variation in/near FTO, CDKAL1, SLC30A8, HHEX, EXT2, IGF2BP2, LOC387761 and CDKN2B with Type 2 Diabetes and Related Quantitative Traits in Pima Indians. *Diabetes*. 2008; 58:478–488. [PubMed: 19008344]
79. Haworth CMA, et al. Increasing Heritability of BMI and Stronger Associations With the FTO Gene Over Childhood. *Obesity*. 2008; 16:2663–2668. [PubMed: 18846049]
80. Cecil JE, Tavendale R, Watt P, Hetherington MM, Palmer CNA. An Obesity-Associated FTO Gene Variant and Increased Energy Intake in Children. *The New England Journal of Medicine*. 2008; 359:2558–2566. [PubMed: 19073975]
81. Zhao J, et al. Examination of All Type 2 Diabetes GWAS Loci Reveals HHEX-IDE as a Locus Influencing Pediatric BMI. *Diabetes*. 2010; 59:751–755. [PubMed: 19933996]
82. Melen E, et al. Genome-wide association study of body mass index in 23 000 individuals with and without asthma. *Clinical and Experimental Allergy*. 2013; 43:463–74. [PubMed: 23517042]

83. den Hoed M, et al. Genetic Susceptibility to Obesity and Related Traits in Childhood and Adolescence. *Diabetes*. 2010; 59:2980–2988. [PubMed: 20724581]
84. Lauria F, et al. Prospective analysis of the association of a common variant of FTO (rs9939609) with adiposity in children: results of the IDEFICS study. *PLoS ONE*. 2012; 7:e48876. [PubMed: 23155422]
85. Zhao J, et al. Role of BMI-associated loci identified in GWAS meta-analyses in the context of common childhood obesity in European Americans. *Obesity*. 2011; 19:2436–9. [PubMed: 21779088]
86. Graff M, et al. Genome-wide analysis of BMI in adolescents and young adults reveals additional insight into the effects of genetic loci over the life course. *Hum Mol Genet*. 2013
87. Hardy R, et al. Life course variations in the associations between FTO and MC4R gene variants and body size. *Human Molecular Genetics*. 2010; 19:545–552. [PubMed: 19880856]
88. Rzehak P, et al. Associations between BMI and the FTO Gene Are Age Dependent: Results from the GINI and LISA Birth Cohort Studies up to Age 6 Years. *Obesity Facts*. 2010; 3:173–180. [PubMed: 20616607]
89. Cauchi S, et al. Combined effects of MC4R and FTO common genetic variants on obesity in European general populations. *J Mol Med*. 2009; 87:537–546. [PubMed: 19255736]
90. Jess T, et al. Impact on weight dynamics and general growth of the common FTO rs9939609: a longitudinal Danish cohort study. *Int J Obes*. 2008; 32:1388–1394.
91. Kilpelainen TO, et al. Obesity-susceptibility loci have a limited influence on birth weight: a meta-analysis of up to 28,219 individuals. *Am J Clin Nutr*. 2011; 93:851–60. [PubMed: 21248185]
92. Horikoshi M, et al. New loci associated with birth weight identify genetic links between intrauterine growth and adult height and metabolism. *Nat Genet*. 2013; 45:76–82. [PubMed: 23202124]
93. Qi L, et al. Fat mass-and obesity-associated (FTO) gene variant is associated with obesity: longitudinal analyses in two cohort studies and functional test. *Diabetes*. 2008; 57:3145–3151. [PubMed: 18647953]
94. Sovio U, et al. Association between common variation at the FTO locus and changes in body mass index from infancy to late childhood: the complex nature of genetic association through growth and development. *PLoS Genet*. 2011; 7:e1001307. [PubMed: 21379325]
95. Speakman JR, Rance KA, Johnstone AM. Polymorphisms of the FTO Gene Are Associated With Variation in Energy Intake, but not Energy Expenditure. *Obesity*. 2008; 16:1961–1965. [PubMed: 18551109]
96. Timpson NJ, et al. The fat mass-and obesity-associated locus and dietary intake in children. *American Journal of Clinical Nutrition*. 2008; 88:971–978. [PubMed: 18842783]
97. Sonestedt E, et al. Fat and carbohydrate intake modify the association between genetic variation in the FTO genotype and obesity. *The American Journal of Clinical Nutrition*. 2009; 90:1418–1425. [PubMed: 19726594]
98. Lee HJ, et al. Effects of common FTO gene variants associated with BMI on dietary intake and physical activity in Koreans. *Clinica Chimica Acta*. 2010; 411:1716–22.
99. Park SL, et al. Association of the FTO Obesity Risk Variant rs8050136 With Percentage of Energy Intake From Fat in Multiple Racial/Ethnic Populations: The PAGE Study. *Am J Epidemiol*. 2013
100. Ahmad T, et al. Lifestyle Interaction With Fat Mass and Obesity-Associated (FTO) Genotype and Risk of Obesity in Apparently Healthy U.S. Women. *Diabetes Care*. 2011; 34:675–680. [PubMed: 21266646]
101. Wardle J, et al. Obesity Associated Genetic Variation in FTO Is Associated with Diminished Satiety. *Journal of Clinical Endocrinology Metabolism*. 2008; 93:3640–3643. [PubMed: 18583465]
102. Wardle J, Llewellyn C, Sanderson S, Plomin R. The FTO gene and measured food intake in children. *Int J Obes*. 2008; 33:42–45.
103. McCaffery JM, et al. Obesity susceptibility loci and dietary intake in the Look AHEAD Trial. *Am J Clin Nutr*. 2012; 95:1477–86. [PubMed: 22513296]
104. Brunkwall L, et al. Genetic variation in the fat mass and obesity-associated gene (FTO) in association with food preferences in healthy adults. *Food Nutr Res*. 2013:57.

105. Tanofsky-Kraff M, et al. The FTO gene rs9939609 obesity-risk allele and loss of control over eating. *Am J Clin Nutr.* 2009; 90:1483–8. [PubMed: 19828706]
106. Tanaka T, et al. Genome-wide meta-analysis of observational studies shows common genetic variants associated with macronutrient intake. *Am J Clin Nutr.* 2013; 97:1395–402. [PubMed: 23636237]
107. Bauer F, et al. Obesity genes identified in genome-wide association studies are associated with adiposity measures and potentially with nutrient-specific food preference. *American Journal of Clinical Nutrition.* 2009; 90:951–959. [PubMed: 19692490]
108. Corella D, et al. A High Intake of Saturated Fatty Acids Strengthens the Association between the Fat Mass and Obesity-Associated Gene and BMI. *The Journal of Nutrition.* 2011; 141:2219–2225. [PubMed: 22049296]
109. Hubacek JA, Pikhart H, Peasey A, Kubinova R, Bobak M. FTO variant, energy intake, physical activity and basal metabolic rate in Caucasians. *The HAPIEE study. Physiological Research.* 2010
110. Holzapfel C, et al. Genes and lifestyle factors in obesity: results from 12,462 subjects from MONICA/KORA. *Int J Obes.* 2010
111. Franks PW, et al. Assessing gene-treatment interactions at the FTO and INSIG2 loci on obesity-related traits in the Diabetes Prevention Program. *Diabetologia.* 2008:2214–2223. [PubMed: 18839134]
112. Rampersaud E, et al. Physical activity and the association of common FTO gene variants with body mass index and obesity. *Arch Intern Med.* 2008; 168:1791–1797. [PubMed: 18779467]
113. Ahmad T, et al. The Fat-Mass and Obesity-Associated (FTO) gene, physical activity, and risk of incident cardiovascular events in white women. *American Heart Journal.* 2010; 160:1163–1169. [PubMed: 21146673]
114. Vimalaswaran KS, et al. Physical activity attenuates the body mass index increasing influence of genetic variation in the FTO gene. *The American Journal of Clinical Nutrition.* 2009; 90:425–428. [PubMed: 19553294]
115. Kilpelainen TO. Physical activity attenuates the influence of FTO variants on obesity risk; a meta-analysis of 218,166 adults and 19,268 children. *PLoS Medicine.* 2011
116. Andreasen CH, et al. Low physical activity accentuates the effect of the FTO rs9939609 polymorphism on body fat accumulation. *Diabetes.* 2008; 57:264–268. [PubMed: 17959933]
117. Sonestedt E, et al. Association between fat intake, physical activity and mortality depending on genetic variation in FTO. *Int J Obes.* 2010
118. Bell CG, et al. Integrated Genetic and Epigenetic Analysis Identifies Haplotype-Specific Methylation in the FTO Type 2 Diabetes and Obesity Susceptibility Locus. *PLoS ONE.* 2010; 5:e14040. [PubMed: 21124985]
119. Toperoff G, et al. Genome-wide survey reveals predisposing diabetes type 2-related DNA methylation variations in human peripheral blood. *Hum Mol Genet.* 2012; 21:371–83. [PubMed: 21994764]
120. Almen MS, et al. Genome wide analysis reveals association of a FTO gene variant with epigenetic changes. *Genomics.* 2012
121. Freathy RM, et al. Common variation in the FTO gene alters diabetes-related metabolic traits to the extent expected, given its effect on BMI. *Diabetes.* 2008; 57:1419–1428. [PubMed: 18346983]
122. Fall T, et al. The Role of Adiposity in Cardiometabolic Traits: A Mendelian Randomization Analysis. *PLoS Med.* 2013; 10:e1001474. [PubMed: 23824655]
123. Hertel JK, et al. FTO, type 2 diabetes, and weight gain throughout adult life: a meta-analysis of 41,504 subjects from the Scandinavian HUNT, MDC, and MPP studies. *Diabetes.* 2011; 60:1637–44. [PubMed: 21398525]
124. Brennan P, et al. Obesity and cancer: Mendelian randomization approach utilizing the FTO genotype. *Int J Epidemiol.* 2009; 38:971–5. [PubMed: 19542184]
125. Delahanty RJ, et al. Association of obesity-related genetic variants with endometrial cancer risk: a report from the Shanghai Endometrial Cancer Genetics Study. *Am J Epidemiol.* 2011; 174:1115–26. [PubMed: 21976109]

126. Machiela MJ, et al. Association of type 2 diabetes susceptibility variants with advanced prostate cancer risk in the Breast and Prostate Cancer Cohort Consortium. *Am J Epidemiol.* 2012; 176:1121–9. [PubMed: 23193118]
127. Lurie G, et al. The obesity-associated polymorphisms FTO rs9939609 and MC4R rs17782313 and endometrial cancer risk in non-Hispanic white women. *PLoS ONE.* 2011; 6:e16756. [PubMed: 21347432]
128. Long J, et al. Evaluating genome-wide association study-identified breast cancer risk variants in African-American women. *PLoS ONE.* 2013; 8:e58350. [PubMed: 23593120]
129. Pierce BL, Austin MA, Ahsan H. Association study of type 2 diabetes genetic susceptibility variants and risk of pancreatic cancer: an analysis of PanScan-I data. *Cancer Causes and Control.* 2011; 22:877–83. [PubMed: 21445555]
130. Lewis SJ, et al. Associations between an obesity related genetic variant (FTO rs9939609) and prostate cancer risk. *PLoS ONE.* 2010; 5:e13485. [PubMed: 20976066]
131. Gaudet MM, et al. No association between FTO or HHEX and endometrial cancer risk. *Cancer Epidemiology, Biomarkers and Prevention.* 2010; 19:2106–9.
132. Lim U, et al. Susceptibility variants for obesity and colorectal cancer risk: the multiethnic cohort and PAGE studies. *International Journal of Cancer.* 2012; 131:E1038–43.
133. Li G, Chen Q, Wang L, Ke D, Yuan Z. Association between FTO gene polymorphism and cancer risk: evidence from 16,277 cases and 31,153 controls. *Tumour Biology.* 2012; 33:1237–43. [PubMed: 22396042]
134. Zheng W, et al. Common genetic determinants of breast-cancer risk in East Asian women: a collaborative study of 23 637 breast cancer cases and 25 579 controls. *Hum Mol Genet.* 2013; 22:2539–50. [PubMed: 23535825]
135. Garcia-Closas M, et al. Genome-wide association studies identify four ER negative-specific breast cancer risk loci. *Nat Genet.* 2013; 45:392–8. 398e1–2. [PubMed: 23535733]
136. Iles MM, et al. A variant in FTO shows association with melanoma risk not due to BMI. *Nat Genet.* 2013; 45:428–32. 432e1. [PubMed: 23455637]
137. Meyre D, et al. Prevalence of loss-of-function FTO mutations in lean and obese individuals. *Diabetes.* 2010; 59:311–8. [PubMed: 19833892]
138. Deliard S, et al. The missense variation landscape of FTO, MC4R, and TMEM18 in obese children of African Ancestry. *Obesity.* 2013; 21:159–63. [PubMed: 23505181]
139. Zheng Z, et al. Screening for Coding Variants in FTO and SH2B1 Genes in Chinese Patients with Obesity. *PLoS ONE.* 2013; 8:e67039. [PubMed: 23825611]
140. Gerken T, et al. The obesity-associated FTO gene encodes a 2-oxoglutarate-dependent nucleic acid demethylase. *Science.* 2007; 318:1469–72. [PubMed: 17991826]
141. Jia G, et al. Oxidative demethylation of 3-methylthymine and 3-methyluracil in single-stranded DNA and RNA by mouse and human FTO. *FEBS Lett.* 2008; 582:3313–9. [PubMed: 18775698]
142. Jia G, et al. N6-methyladenosine in nuclear RNA is a major substrate of the obesity-associated FTO. *Nat Chem Biol.* 2011; 7:885–7. [PubMed: 22002720]
143. Han Z, et al. Crystal structure of the FTO protein reveals basis for its substrate specificity. *Nature.* 2010; 464:1205–9. [PubMed: 20376003]
144. Desrosiers R, Friderici K, Rottman F. Identification of methylated nucleosides in messenger RNA from Novikoff hepatoma cells. *Proc Natl Acad Sci U S A.* 1974; 71:3971–5. [PubMed: 4372599]
145. Kowalak JA, Pomerantz SC, Crain PF, McCloskey JA. A novel method for the determination of post-transcriptional modification in RNA by mass spectrometry. *Nucleic Acids Res.* 1993; 21:4577–85. [PubMed: 8233793]
146. Chambers JC, et al. Common genetic variation near MC4R is associated with waist circumference and insulin resistance. *Nat Genet.* 2008; 40:716–8. [PubMed: 18454146]
147. Vaisse C, Clement K, Guy-Grand B, Froguel P. A frameshift mutation in human MC4R is associated with a dominant form of obesity. *Nat Genet.* 1998; 20:113–4. [PubMed: 9771699]
148. Yeo GS, et al. A frameshift mutation in MC4R associated with dominantly inherited human obesity. *Nat Genet.* 1998; 20:111–2. [PubMed: 9771698]

149. Challis BG, et al. A missense mutation disrupting a dibasic prohormone processing site in pro-opiomelanocortin (POMC) increases susceptibility to early-onset obesity through a novel molecular mechanism. *Hum Mol Genet.* 2002; 11:1997–2004. [PubMed: 12165561]
150. Krude H, et al. Severe early-onset obesity, adrenal insufficiency and red hair pigmentation caused by POMC mutations in humans. *Nat Genet.* 1998; 19:155–7. [PubMed: 9620771]
151. Gray J, et al. Hyperphagia, severe obesity, impaired cognitive function, and hyperactivity associated with functional loss of one copy of the brain-derived neurotrophic factor (BDNF) gene. *Diabetes.* 2006; 55:3366–71. [PubMed: 17130481]
152. Benzinou M, et al. Common nonsynonymous variants in PCSK1 confer risk of obesity. *Nat Genet.* 2008; 40:943–5. [PubMed: 18604207]
153. Jackson RS, et al. Obesity and impaired prohormone processing associated with mutations in the human prohormone convertase 1 gene. *Nat Genet.* 1997; 16:303–6. [PubMed: 9207799]
154. Peters T, Ausmeier K, Ruther U. Cloning of Fatso (Fto), a novel gene deleted by the Fused toes (Ft) mouse mutation. *Mamm Genome.* 1999; 10:983–6. [PubMed: 10501967]
155. Anselme I, Laclef C, Lanaud M, Ruther U, Schneider-Maunoury S. Defects in brain patterning and head morphogenesis in the mouse mutant Fused toes. *Dev Biol.* 2007; 304:208–20. [PubMed: 17241623]
156. van der Hoeven F, et al. Programmed cell death is affected in the novel mouse mutant Fused toes (Ft). *Development.* 1994; 120:2601–7. [PubMed: 7956835]
157. Fischer J, et al. Inactivation of the Fto gene protects from obesity. *Nature.* 2009; 458:894–8. [PubMed: 19234441]
158. McMurray F, et al. Adult onset global loss of the fto gene alters body composition and metabolism in the mouse. *PLoS Genet.* 2013; 9:e1003166. [PubMed: 23300482]
159. Boissel S, et al. Loss-of-function mutation in the dioxygenase-encoding FTO gene causes severe growth retardation and multiple malformations. *Am J Hum Genet.* 2009; 85:106–11. [PubMed: 19559399]
160. Delous M, et al. The ciliary gene RPGRIP1L is mutated in cerebello-oculo-renal syndrome (Joubert syndrome type B) and Meckel syndrome. *Nat Genet.* 2007; 39:875–81. [PubMed: 17558409]
161. Church C, et al. Overexpression of Fto leads to increased food intake and results in obesity. *Nat Genet.* 2010; 42:1086–92. [PubMed: 21076408]
162. Tung YC, et al. Hypothalamic-specific manipulation of Fto, the ortholog of the human obesity gene FTO, affects food intake in rats. *PLoS One.* 2010; 5:e8771. [PubMed: 20098739]
163. Gao X, et al. The fat mass and obesity associated gene FTO functions in the brain to regulate postnatal growth in mice. *PLoS One.* 2010; 5:e14005. [PubMed: 21103374]
164. Ma M, Harding HP, O’Rahilly S, Ron D, Yeo GS. Kinetic analysis of FTO (fat mass and obesity-associated) reveals that it is unlikely to function as a sensor for 2-oxoglutarate. *Biochem J.* 2012; 444:183–7. [PubMed: 22435707]
165. Cheung MK, Gulati P, O’Rahilly S, Yeo GS. FTO expression is regulated by availability of essential amino acids. *Int J Obes.* 2013; 37:744–7.
166. Gulati P, et al. Role for the obesity-related FTO gene in the cellular sensing of amino acids. *Proc Natl Acad Sci U S A.* 2013; 110:2557–62. [PubMed: 23359686]
167. Quevillon S, Robinson JC, Berthonneau E, Siatecka M, Mirande M. Macromolecular assemblage of aminoacyl-tRNA synthetases: identification of protein-protein interactions and characterization of a core protein. *J Mol Biol.* 1999; 285:183–95. [PubMed: 9878398]
168. Dominissini D, et al. Topology of the human and mouse m6A RNA methylomes revealed by m6A-seq. *Nature.* 2012; 485:201–6. [PubMed: 22575960]
169. Meyer KD, et al. Comprehensive analysis of mRNA methylation reveals enrichment in 3’ UTRs and near stop codons. *Cell.* 2012; 149:1635–46. [PubMed: 22608085]
170. Bokar JA, Shambaugh ME, Polayes D, Matera AG, Rottman FM. Purification and cDNA cloning of the AdoMet-binding subunit of the human mRNA (N6-adenosine)-methyltransferase. *RNA.* 1997; 3:1233–47. [PubMed: 9409616]

171. Zheng G, et al. ALKBH5 is a mammalian RNA demethylase that impacts RNA metabolism and mouse fertility. *Mol Cell*. 2013; 49:18–29. [PubMed: 23177736]
172. Hess ME, et al. The fat mass and obesity associated gene (Fto) regulates activity of the dopaminergic midbrain circuitry. *Nat Neurosci*. 2013
173. Karra E, et al. A link between FTO, ghrelin, and impaired brain food-cue responsivity. *The Journal of Clinical Investigation*. 2013; 123
174. Abecasis GR, et al. An integrated map of genetic variation from 1,092 human genomes. *Nature*. 2012; 491:56–65. [PubMed: 23128226]

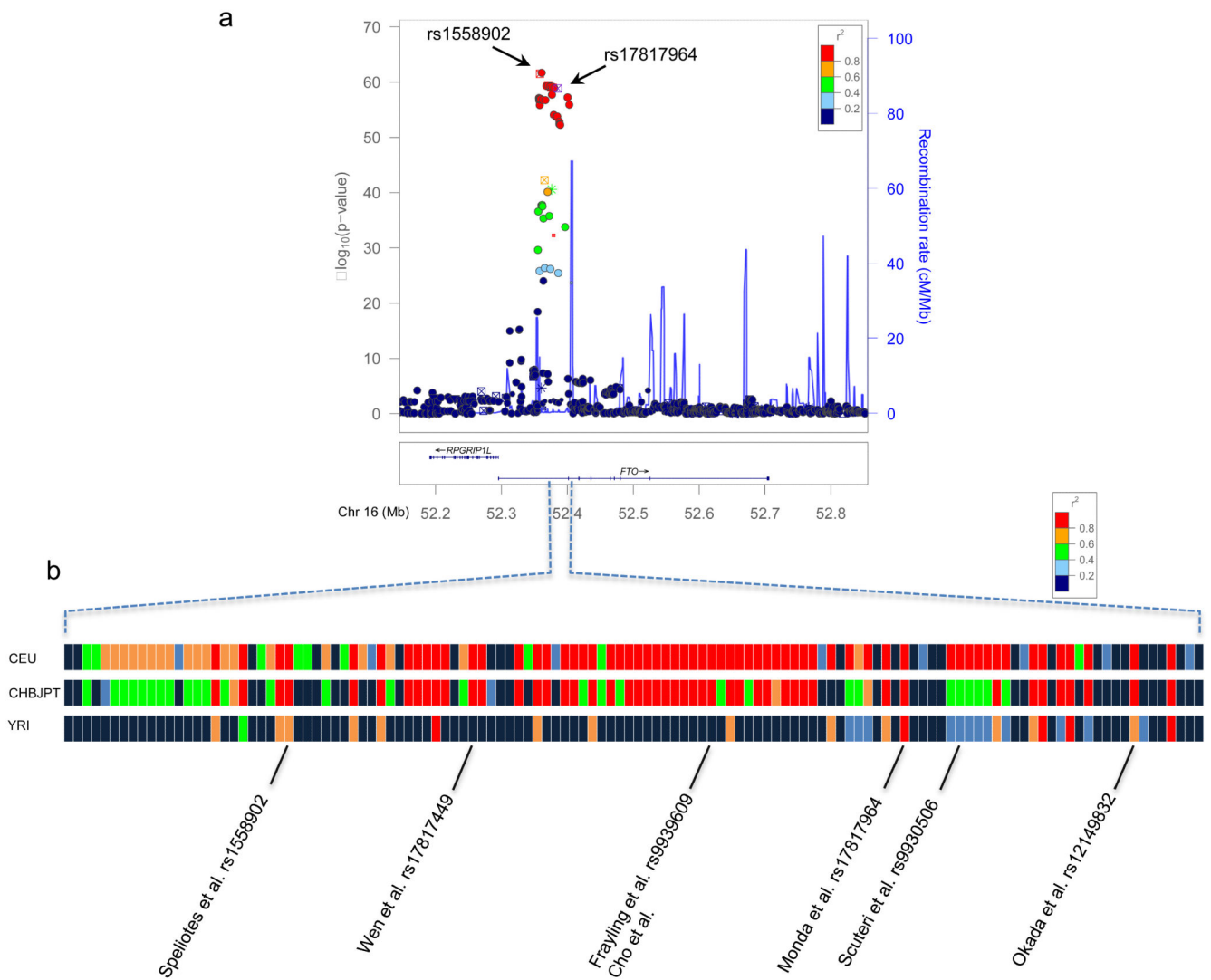
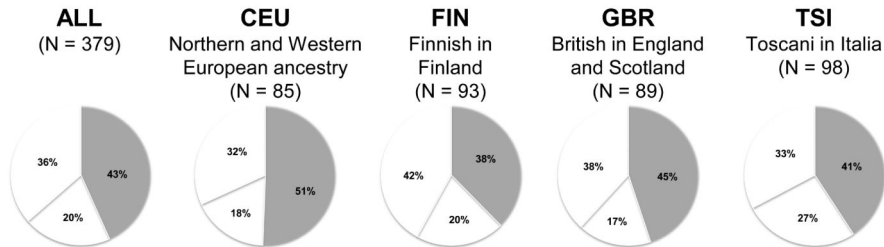


Figure 1. A cluster of BMI-associated SNPs in *FTO*'s first intron.

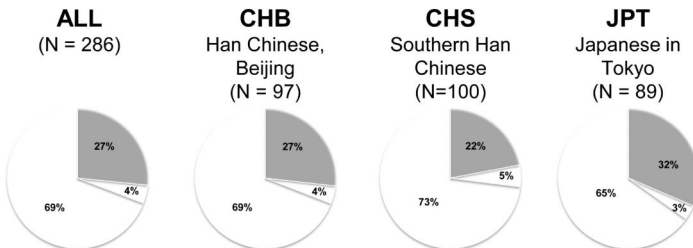
a | Regional plot of the *FTO* locus in European ancestry populations. SNPs are plotted by position on chromosome 16 against association with BMI ($-\log_{10}$ P-value).¹⁶

Recombination rates (from CEU HapMap) are plotted in cyan to reflect the local LD structure. The SNPs surrounding the rs17817964 (in purple) are color coded to reflect their LD with this SNP (r^2 values from the HapMap CEU data). **b** | The LD structure of SNPs surrounding rs17817964, color coded to reflect their LD with this SNP in European (CEU), East Asian (CHBJPT) and African (YRI) ancestry populations. Based on LD r^2 values from the HapMap CEU, CHBJPT and YRI data. Each “cell” represents a SNP in the first intron of *FTO* (between position 52,355,019 and 52,407,580 according to NCBI Build 36). SNPs in “red” are highly correlated ($r^2 > 0.80$) with rs17817964.

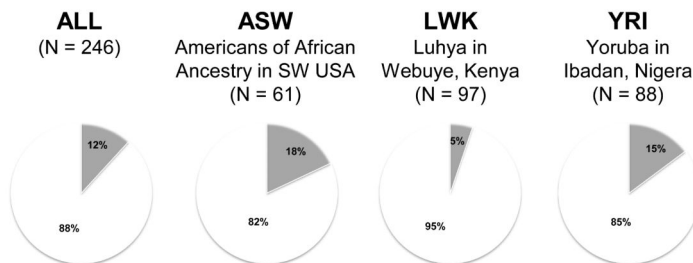
European ancestry populations



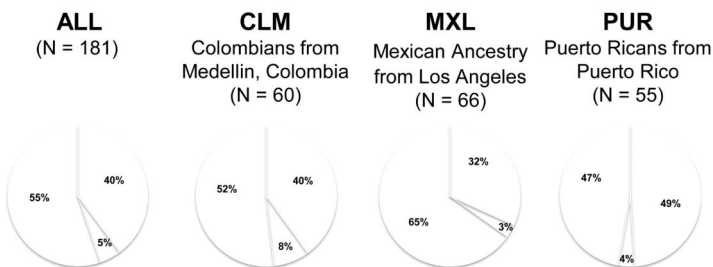
East Asian ancestry populations



African ancestry populations



Admixed American populations



■ C|C homozygotes
■ C|T heterozygotes
■ T|T homozygotes

Figure 2. Genotype frequencies for rs17817964 across populations of different ancestry based on data from the 1000 Genomes Project.¹⁷⁴ The T-allele is the BMI-increasing allele.

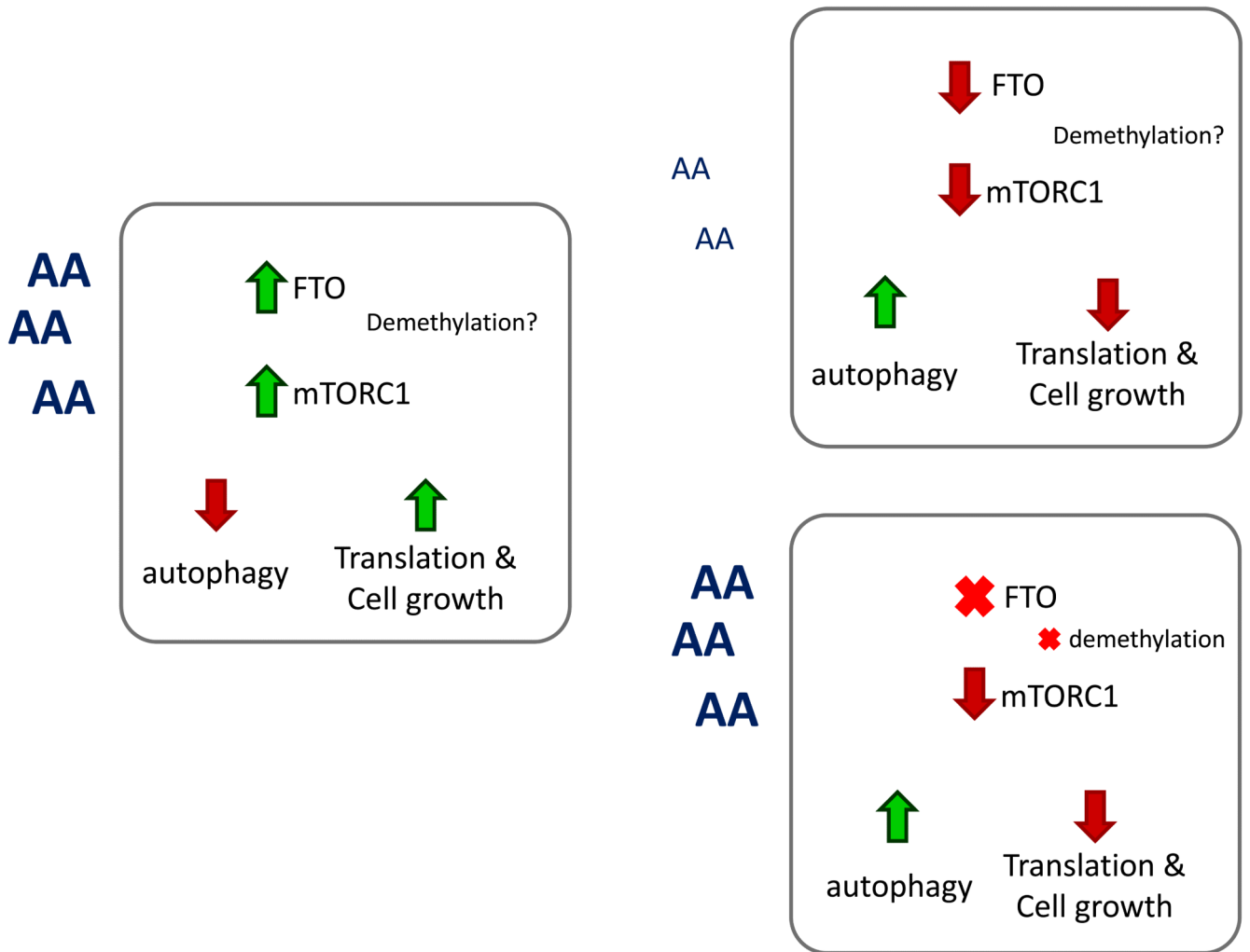


Figure 3. Model of FTO's role in the cellular sensing of amino acids (AAs).

Table 1
Effect size and explained variance of BMI-associated FTO SNPs in European, Asian and African ancestry populations.

Ancestry	BMI-increasing allele frequency (%)	Effect on BMI (kg/m ² per allele)	Explained BMI variance (%)	Effect on obesity risk** (OR per allele)	Source
European	42%	0.39	0.34	1.20	16
East Asian	12-20%	0.25	0.16	1.27	58
Indian Asian	30-33%	0.29	0.20	1.18	58
African	12%	0.41*	0.10	-	26

* Derived from the stage 2 effect size (inverse variance units) reported by Monda et al.²⁶ (assuming a SD of 6 kg/m²).

** Obese vs normal weight; in European ancestry populations the obesity cut off is 30 kg/m², in Asian ancestry populations the cut off is 28kg/m².