

The Rise in the Incidence of Hospitalizations for the Aged, 1967 to 1979

by James Lubitz and Ronald Deacon

Since the beginning of the Medicare program in July 1966, the rate of hospitalizations for persons age 65 and over has risen steadily. The rate grew more for the aged than for younger age groups. Because of concern about the appropriateness and cost of hospital care, this article examines the increase in hospitalizations for the aged and attempts to identify factors that may explain why the discharge rate rose more for the aged than for younger persons.

The article shows that most of the increase in the discharge rate among the aged was associated with an increase in the percentage of persons using the hospital rather than with an increase in rate of multiple hospitalizations. There was also a large increase in the rate of hospital stays of short duration. Examination of changes in diagnostic and surgical case-mix showed that there was a large increase in vascular and cardiac surgeries. Changes in demographic composition and insurance coverage did not help explain the difference in the rate of growth of hospitalizations by age group.

The increase in the rate of the aged being cared for in the hospital raises the question of the necessity and quality of the care they receive. Additional studies should focus on the nature and appropriateness of the hospital services rendered to the elderly.

Introduction

Since the beginning of the Medicare program in July 1966, the rate of hospitalizations for Medicare enrollees has risen steadily. While the discharge rate (the number of discharges per 1,000 persons) for the population under age 65 grew by 11 percent from 1967 to 1979, the rate for persons age 65 and over—more than 90% of whom are Medicare enrollees—increased by 35 percent. A comparison of the proportion of the population hospitalized in each age group shows that the proportion of aged persons hospitalized annually increased more than that of younger age groups. Thus, in addition to greater increases in the discharge rate there has been a greater increase in the proportion of the aged who are exposed to the benefits and risks of hospital care. The steady but undramatic nature of the year-to-year rise in the hospital discharge rate for Medicare beneficiaries coupled with the fact that the number of days of care per 1,000 enrollees has not increased, are very likely the major reasons that the rise in the discharge rate has not received as much attention as the rise in hospital expenditures. Because of the influence

of the increase in the discharge rate on expenditures and because of the questions it raises about changes in the nature of hospital care of the aged, the increase in the Medicare hospitalization rate must be examined.

An important reason to examine the rise in the Medicare discharge rate is provided by studies suggesting that some hospital admissions and days of care may be inappropriate (Zimmer, 1974; Restuccia and Holloway, 1976) and by studies finding large geographic variations in the incidence of surgery, apparently unrelated to variations in need (Lembcke, 1952; Lewis, 1969; Bunker, 1970; Wennberg and Gittlesohn, 1975).

This article focuses on trends in the discharge rate under Medicare for persons age 65 years and over and discusses certain components of the discharge rate that have played a role in the overall increase. It also explores some factors that may have influenced the discharge rate. The article examines changes in the number of persons hospitalized each year and changes in the rate of multiple stays. Then changes in the distribution of hospital stays and hospital charges by length-of-stay interval are examined. The article also focuses on trends in diagnostic

and surgical case-mix and explores how the findings relate to changing patterns of medical practice. Finally, the article examines changes in hospital insurance coverage and changes in the supply of hospitals and physicians as these changes relate to the increases in the discharge rate for the aged.

Several earlier studies have analyzed aspects of the Medicare discharge rate. Pettengill (1972) studied the initial impact of Medicare on hospital use by comparing use before and after the program began. Using data from a variety of sources, he found a 5-7 percent increase in the discharge rate from the year before Medicare was implemented to the first year of the program. From 1967 to 1971, the discharge rate grew, although at a decreasing rate. The trend of slowly rising discharge rates, the author felt, may have stemmed from developments in medicine permitting treatment of disorders that could not be dealt with before. Gornick (1977) focused on geographic differences in hospital discharge rates among states using 1972-1973 data and found higher rates in rural states and greater variation in non-surgical discharges than discharges with surgery. An analysis of trends in Medicare hospital use from 1967 to 1976 (Helbing, 1980) showed higher discharge rates for men than women, and whites than non-whites (although the gap has been narrowing) and higher rates for older enrollees throughout the period.

Most studies exploring factors related to hospital use have focused on explaining cross-sectional variation across geographic areas rather than time trends. In their review of such studies Rothberg *et al* (1980) noted that they often arrived at contradictory results and that no study was able to explain differences in hospital use across census regions. Nevertheless, we believe that studies of cross-sectional variation at the national level have generally identified a set of variables related to hospital use despite differences in methods and units of analysis and time and population studied.¹ Variables generally found positively correlated with admission or discharge rates include extent of hospital insurance coverage, hospital bed supply, age, and measures of rurality; and variables negatively correlated with admission rates include hospital occupancy and physician supply. Chiswick (1976) found a positive relation between admission rates and supply of surgeons, as opposed to other physicians. The studies did not agree on the role of race, income or the supply of nursing home beds.

¹ Such studies include Chiswick's (1976) multi-equation model examining factors related to the variation in admission rates, hospital occupancy and hospital beds per capita among Standard Metropolitan Statistical Areas (SMSAs) in 1967 and Anderson's (1981) examination of factors related to admission rates, length of stay, and hospital expenses per day among health service areas (HSAs) in 1978. Studies of variations in hospital use by Medicare enrollees, as opposed to the entire population, include Gornick's analyses (1981 and 1977) of 1979 PSRO level and 1972 and 1973 state level data and the analyses by Deacon *et al* (1980) and Lintzeris *et al* (1981) of 1976 data at the PSRO area and HSA levels.

The 1979 evaluation of the Professional Standards Review Organization (PSRO) program (United States Department of Health and Human Services, 1980) was one of the few studies that attempted to explain time trends rather than cross-sectional differences in hospital use. As part of an analysis of the impact of PSROs, the study examined the relationship between a number of factors and the change in discharge rates in PSRO areas in the four U.S. census regions between 1974 and 1978. However, except for a relationship between an increase in the supply of hospital beds and an increase in the discharge rate in two regions, no variable showed a consistent relationship with the change in the discharge rate in PSRO areas in two or more regions.

In contrast to most of the cited studies, this article examines national trends through time rather than cross-sectional geographic variations in one year. The study explores trends in some of the variables found related to the discharge rate in earlier studies—insurance coverage, hospital supply, and physician supply; and demographic variables like age, sex, and race. A multivariate analysis of the differential rise in the discharge rate between the aged and younger populations was not attempted because of the difficulty in identifying independent variables with differential impacts on the old and young.

It is important to observe that the continuing upward trend in the discharge rate affects Medicare payments to hospitals. In particular, this trend should be taken into account in the cost-containment strategies now being designed and tested. Many strategies involve case-mix based reimbursement schemes which would pay hospitals on a per-discharge basis, as opposed to the current retrospective cost basis. Clearly, if the current trend in the discharge rate continues, total reimbursements will increase despite the restraints such a system might impose.

Sources of the Data

The data used in this study were derived primarily from information which hospitals report to the Health Care Financing Administration through their fiscal intermediaries.² Data were compiled and analyzed for a 20-percent probability sample of Medicare Part A (Hospital Insurance) enrollees aged 65 and over discharged from short-stay hospitals during the period covered by this study.³ Not included in the study are hospital stays of persons enrolled under the disability portion of the Medicare program which covers certain disabled persons under age 65. Since the data come from a sample of enrollees, the estimates are subject to sampling errors which are given in the Technical Note at the end of this report.

² Data used for this paper were developed especially for this study; some figures may differ slightly from those in other reports about Medicare hospital use. In no case would any conclusions be affected by the differences.

³ Short-stay hospitals are hospitals with an average length of stay of less than 30 days.

In addition, data from the Medicare program are supplemented by data from the National Center for Health Statistics (NCHS) National Hospital Discharge Survey, an annual survey of a probability sample of U.S. hospitals begun in 1965 and from the NCHS National Health Interview Survey, an annual survey of a probability sample of households in the U.S.

The NCHS National Hospital Discharge Survey is the source of data on longitudinal trends in discharges by diagnosis and surgical procedure. It was chosen over the Medicare Statistical System as a source of such data because it provides data on all ages and because data were more readily available for more years in the study period. The reliability of diagnostic and surgical data from both the National Hospital Discharge Survey and Medicare was studied by the Institute of Medicine (Institute of Medicine, 1977, 1980). In these studies, diagnostic and surgical information on a sample of cases was abstracted and coded by a trained field team. When their results were compared with the codes for the same cases in the files of the systems under study, serious discrepancies were found for many diagnoses and procedures. Thus, data on discharges by diagnosis or surgical procedure contain errors, and emphasis should be given to analysis of large differences persisting over time. We attempted to present the most recent data but, because of differences in data availability, not all data could be shown through 1979.

Findings

Changes in the Discharge Rate for Different Age Groups

Table 1 and Figure 1 use data from the NCHS to contrast the increase in the discharge rate from short-stay hospitals for persons 65 years of age and over and for persons under age 65. From 1967 to 1979, the discharge rate for persons age 65 and over grew 35 percent, rising from 289 discharges per 1,000 persons to 389 discharges per 1,000 persons. The discharge rate for persons under age 65 grew only 11 percent, increasing from 130 discharges per 1,000 persons to 144 discharges per 1,000 persons from 1967 to 1979. The discharge rate for persons 45 to 64 increased by 22 percent; for persons age 15 to 44 the rate actually decreased by 4 percent, and for persons under age 15 the rate rose by 9 percent.⁴

⁴ Data for 1953, 1958, 1963 and 1970 from household surveys suggest that the trend for admission rates to increase faster for older than younger persons began as early as the 1950's. For more information see: Ronald Andersen, Joanna Lion, and Odin Anderson, *Two Decades of Health Services: Social Survey Trends in Use and Expenditure*, Ballinger, Cambridge, MA, 1976, pp. 34 and 51.

Two major demographic changes in the population under age 65 from 1967 to 1979 have had opposite effects on the discharge rate for this group. The aging of the under 65 population tended to increase the rate. The lowered birth rate, which in turn reduced the rate of hospitalizations for deliveries, tended to decrease the rate. Using an age and sex adjusted discharge rate, and excluding hospitalizations for deliveries, the increase in the discharge rate for 1967 to 1979 for the under 65 population was shown to be 11 percent, the same as the increase in the unadjusted rate.

TABLE 1
Number of Short-stay Hospital Discharges Per 1,000 Population, by Age, U.S., 1967, 1974, 1977 and 1979

Age					Percent Change, 1967-1979
	1967	1974	1977	1979	
All Ages	144	159	169	170	18
Under 65, unadjusted	130	138	145	144	11
Under 65, adjusted ¹	109	119	124	121	11
Under 15	67	72	73	73	9
15-44	162	155	160	156	-4
15-44, excluding deliveries ²	115	120	125	120	4
45-64	161	188	198	196	22
65 Years and Over	289	346	374	389	35

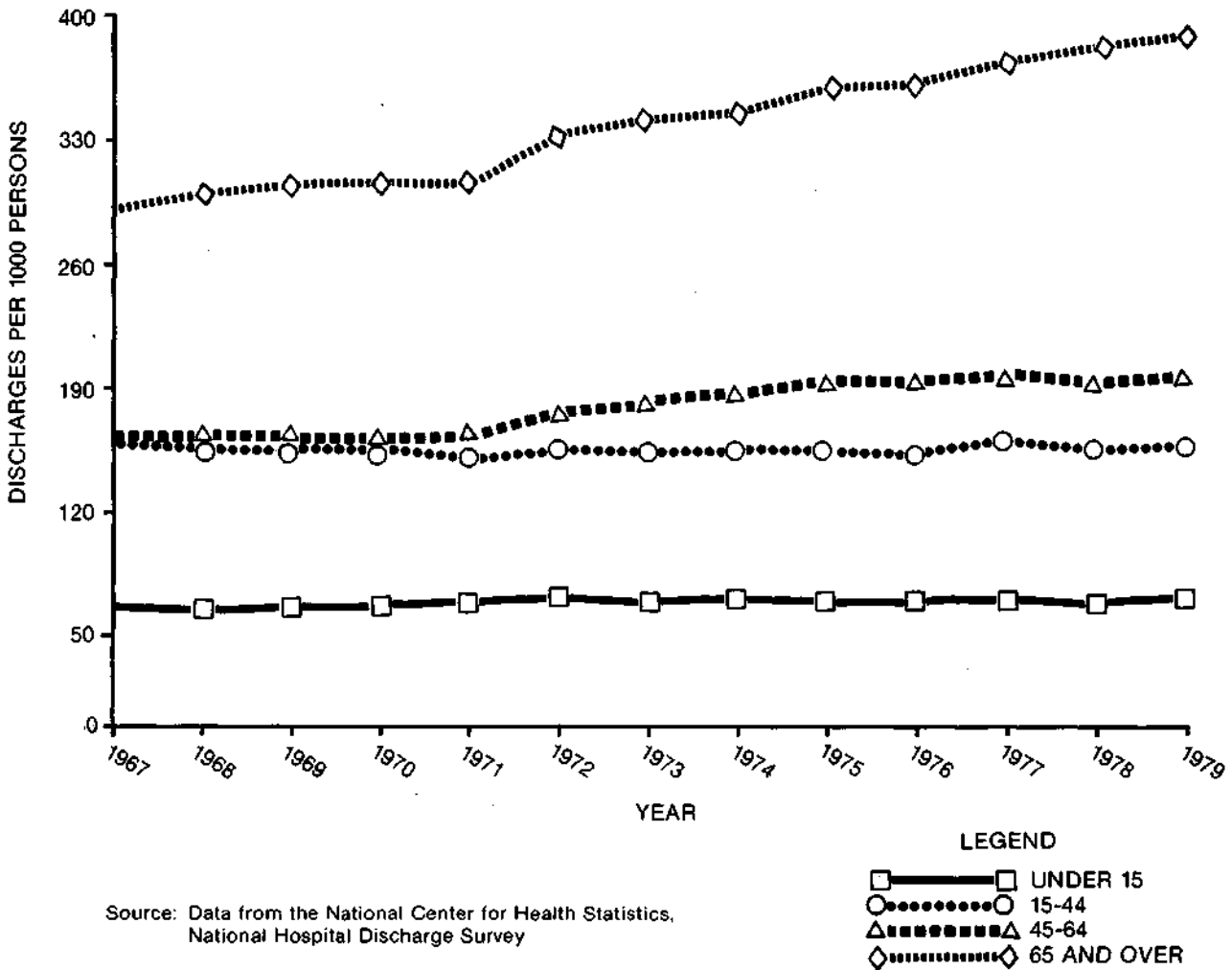
¹ The rates were adjusted first for the decrease in hospitalizations for deliveries due to the decline in the birth rate by excluding hospitalizations for deliveries.

Then the rates were age and sex adjusted by the direct method to the 1967 population using three age groups.

² The decline in the discharge rate for the age group 15 to 44 reflects the substantial decline in deliveries. This line gives the discharge rate excluding hospitalizations for deliveries.

Source: National Center for Health Statistics, "Inpatient Utilization of Short-Stay Hospitals in Each Geographic Division, U.S.—1966–1968," *Vital and Health Statistics*, Series 13, No. 10, "Utilization of Short-Stay Hospitals, Summary of Nonmedical Statistics, U.S.—1967," *Vital and Health Statistics*, Series 13, No. 9, and "Utilization of Short-Stay Hospitals, Annual Summary of the United States," *Vital and Health Statistics*, Series 13, No. 26, for 1974 and Series 13, No. 41 for 1977 and preliminary data from NCHS for 1979.

FIGURE I.
Number of Discharges
Per 1000 Persons by Age, U.S.
1967-1979



It is of interest to compare the aged population and the population under age 65 on trends in the two other summary measures of hospital use—average length of stay (ALOS) and days of care per 1,000 population. Table 2 shows that ALOS declined for all age groups and that the percentage decline was greater for the aged than for

other age groups. Table 3 shows trends in the days of care rate by age.⁵ For most age groups the days of care rate decreased, but for the aged the rate increased slightly.

⁵ The days of care rate is the product of the discharge rate and ALOS.

TABLE 2
Average Length of Stay (in days) in Short-stay Hospitals, by Age, U.S., 1967, 1974, 1977 and 1979

Age					Percent Change, 1967-1979
	1967	1974	1977	1979	
All Ages	8.4	7.7	7.3	7.2	-14
Under age 65	7.1	6.6	6.2	6.0	-15
Under 15	5.0	4.6	4.2	4.3	-14
15-44	6.2	5.7	5.3	5.2	-16
15-44, excluding deliveries	6.8	6.2	5.7	5.7	-16
45-64	10.1	9.0	8.5	8.2	-19
65 Years and Over	14.1	11.9	11.1	10.8	-23

Source: National Center for Health Statistics, "Inpatient Utilization of Short-Stay Hospitals in Each Geographic Division, U.S.—1966-1968," *Vital and Health Statistics*, Series 13, No. 10, "Utilization of Short-Stay Hospitals, Summary of Nonmedical Statistics, U.S.—1967," *Vital and Health Statistics*, Series 13, No. 9, and "Utilization of Short-Stay Hospitals, Annual Summary of the United States," *Vital and Health Statistics*, Series 13, No. 26, for 1974 and Series 13, No. 41 for 1977 and preliminary data from NCHS for 1979.

TABLE 3
Numer of Days of Care in Short-stay Hospitals per 1,000 Population by Age, U.S., 1967, 1974, 1977 and 1979

Age					Percent Change, 1967-1979
	1967	1974	1977	1979	
All Ages	1,215	1,233	1,237	1,224	1
Under age 65	920	913	894	864	-6
Under 15	333	328	308	315	-5
15-44	1,000	892	849	818	-18
15-44, excluding deliveries	783	752	716	681	-13
45-64	1,635	1,702	1,688	1,604	-2
65 Years and Over	4,086	4,107	4,156	4,182	2

Source: National Center for Health Statistics, "Inpatient Utilization of Short-Stay Hospitals in Each Geographic Division, U.S.—1966-1968," *Vital and Health Statistics*, Series 13, No. 10, "Utilization of Short-Stay Hospitals, Summary of Nonmedical Statistics, U.S.—1967," *Vital and Health Statistics*, Series 13, No. 9, and "Utilization of Short-Stay Hospitals, Annual Summary of the United States," *Vital and Health Statistics*, Series 13, No. 26, for 1974 and Series 13, No. 41 for 1977 and preliminary data from NCHS for 1979.

Overall Trends in Medicare Hospital Use

Medicare data for 1967 to 1977 show that the discharge rate from short-stay hospitals for Medicare enrollees age 65 and over rose from 259 discharges per 1,000 enrollees to 335 discharges per 1,000, a 29 percent increase. (Table 4).

TABLE 4
Trends in Selected Measures of Short-stay Hospital Use by Medicare Enrollees Age 65 and Over, U.S., 1967, 1973 and 1977

Measure	1967	1973	1977	Change	
				1967-1977	Percent Change
Discharges per 1,000 enrollees, unadjusted	259	303	335	76	29
Discharges per 1,000 enrollees, adjusted*	259	—	332	73	28
Average Length of Stay	13.8	11.7	10.9	-2.9	-21
Median Length of Stay	9.9	9.1	8.4	-1.5	-15
Days of Care per 1,000 enrollees	3575	3547	3651	76	2

* The 1977 rate was adjusted for age, sex, and race to the 1967 enrollee population using the direct method using two race groups and eight age groups.

Year-by-year data (not shown) indicate that the discharge rate increased from 1967 to 1968, nearly leveled off from 1968 through 1971, and has been growing steadily ever since. In contrast, ALOS has dropped steadily from 13.8 in 1967 to 10.9 days in 1977, a 21 percent decline. These opposing trends in the discharge rate and ALOS have nearly offset each other with the result that the rate of days of care has not changed much from 1967 to 1977. The rate was 3,575 in 1967 and 3,651 in 1977.

Since the demographic characteristics of the Medicare population have changed from 1967 to 1977, with increases in the median age and the proportion of women and non-whites, the possible role of these changes in the growth of the discharge rate was examined. When the 1977 total discharge rate was adjusted by age, sex and race to the 1967 population, the 1977 rate changed slightly from 335 to 332 discharges per 1,000 enrollees, showing that the net effect of demographic changes has been small.

Table 5 shows the increase in the discharge rate by age group for Medicare enrollees. The youngest group of enrollees, age 65 to 74, experienced the greatest increase, 29 percent, followed by an increase of 27 percent for enrollees age 75 to 84 and an increase of 23 percent for enrollees age 85 and over.

TABLE 5
Number of Short-stay Hospital Discharges Per 1,000 Enrollees by Age for Medicare Enrollees Age 65 and Over, U.S., 1967, 1973 and 1977

Age	Discharges Per 1,000 Enrollees			Percent Change 1967-1977
	1967	1973	1977	
65 and over	259	303	335	29
65-74	224	265	289	29
75-84	307	348	389	27
85 and over	370	404	455	23

Two other population factors should be examined for their possible role in the increase in the Medicare discharge rate. The first is the mortality rate of Medicare enrollees. The discharge rate is much higher in the last year of life (Piro and Lutins, 1973; Lubitz *et al*, 1981). If the mortality rate increased, it would very likely have raised the discharge rate. However, the number of deaths per 1,000 enrollees actually decreased from 58 in 1967 to 53 in 1977, despite the aging of the Medicare population.

The second factor that could be related to the increase in the discharge rate is a change in the percent of deaths occurring in hospitals. This percent actually changed very little. In 1967, 44 percent of all deaths of Medicare enrollees occurred in a short-stay hospital; in 1977, 42 percent took place in a short-stay hospital. Thus, neither changes in the mortality rate nor changes in the percent of deaths that occur in hospitals were factors in the rise of the hospitalization rate.

Trends in User Rates and Stay Rates

The discharge rate can be expressed as the product of two measures—the user rate and the stay rate. The relationship between the discharge rate and (1) the user rate or proportion of enrollees hospitalized in a year; and (2) the stay rate or average number of hospital stays per year for each user can be expressed as:

$$D = U \times S$$

where D = discharge rate (number of discharges per 1,000 enrollees).

U = user rate (number of persons hospitalized per 1,000 enrollees).

S = stay rate (average number of stays per hospitalized person).

In order for the discharge rate to increase, either the user rate and/or the stay rate must increase. Table 6 shows the user rates for both the population age 65 and over and the age groups under 65 years, using data from the National Health Interview Survey of NCHS. The National Health Interview Survey underestimates the hospital experience of the persons age 65 and over because the survey excludes deceased or institutionalized persons who account for a large percent of hospital discharges for the aged. Since 1967, National Health Interview Survey estimates of discharges for persons age 65 and over have averaged 21 to 32 percent less than estimates from the National Hospital Discharge Survey of NCHS (Lubitz, 1981). For this reason the data in Table 6 are more useful for comparing time trends by age group than for making comparisons across age groups for any one year.

The table shows that from 1967 to 1977 the percent of the population with a hospital stay rose 6 percent from 9.8 to 10.4 percent. For all age groups up to age 44 the user rate actually declined. For persons age 45 to 64 the user rate increased 12 percent, and for persons age 65 and over it increased 27 percent. By 1977, 18.1 percent of persons age 65 and over were hospitalized at least once in contrast to 14.3 percent in 1967.

TABLE 6
Percent of Population with Short-stay Hospital Discharges, by Age, U.S., 1967, 1974 and 1977

Age	Percent of Population With Short-Stay Hospital Discharges (user rate)			Percent Change 1967-1977
	1967	1974	1977	
All Ages	9.8	10.7	10.4	6
Under 17	5.3	5.7	5.0	-6
17-24	13.4	11.3	10.9	-19
25-34	13.6	13.3	12.5	-8
35-44	10.5	11.2	10.4	-1
45-64	10.7	12.7	12.0	12
65 and over	14.3	16.8	18.1	27

Source: National Center for Health Statistics, "Current Estimates from the Health Interview Survey, United States," for 1967, 1974 and 1977, Series 10, Nos. 52, 100 and 106.

Note: The Health Interview Survey (NHIS) does not provide information on the deceased or institutionalized population. Thus, NHIS data tend to seriously underestimate hospital use for the 65 and over age group.

Table 7 uses data from the National Health Interview Survey to compare trends by age from 1967 to 1977 in the number of hospital discharges per person hospitalized (the stay rate). For all ages the stay rate increased from 1.25 stays per person hospitalized in 1967 to 1.34 stays per person hospitalized in 1977, a 7 percent increase. The greatest increases were found among persons age 35 to 44, showing a 13 percent increase, and persons age 65 and over, showing an 11 percent increase. Thus, aged persons experienced the greatest growth in the user rate and the second greatest growth in the stay rate among all age groups.

TABLE 7
Number of Short-stay Hospital Discharges Per Person Hospitalized, by Age, U.S., 1967, 1974 and 1977

Age	Number of Short-Stay Hospital Discharges Per Person Hospitalized (stay rate)			Percent Change 1967-1977
	1967	1974	1977	
	All Ages	1.25	1.32	
Under 17	1.22	1.24	1.26	3
17-24	1.22	1.24	1.25	3
25-34	1.15	1.20	1.24	8
35-44	1.22	1.35	1.38	13
45-64	1.32	1.37	1.38	4
65 and over	1.37	1.51	1.52	11

Source: National Center for Health Statistics, "Current Estimates from the Health Interview Survey, United States," for 1967, 1974 and 1977, Series 10, Nos. 52, 100 and 106.

Table 8 uses Medicare data to examine changes in the user rate and the stay rate by age for Medicare enrollees 65 and over from 1967 to 1977. The table shows that the largest increases in the user rate occurred among younger enrollees aged 65 to 74. In that age group there was a 21 percent increase, compared to a 15 percent increase among persons age 85 and over. The percent increase in the stay rate did not vary greatly by age.

TABLE 8
Percent of Enrollees With Short-stay Hospital Discharges and Number of Discharges Per Person Hospitalized, by Age, Medicare Enrollees Age 65 and Over, U.S., 1967, 1973 and 1977

Age	Percent of Enrollees With Short-stay Hospital Discharges (User Rate)			Percent Change 1967-1977
	1967	1973	1977	
65 and Over	18.7	21.4	22.6	21
65-74	16.1	18.7	19.4	21
75-84	22.0	24.5	26.1	19
85 and Over	27.4	29.4	31.5	15

Number of Short-stay Hospital Discharges Per Person Hospitalized (Stay Rate)				
65 and Over	1.38	1.41	1.48	7
65-74	1.38	1.42	1.49	8
75-84	1.39	1.42	1.49	7
85 and Over	1.35	1.37	1.44	7

The NCHS and Medicare data on trends in the discharge rate by age (Tables 1 and 5) and on trends by age in the user rate (Tables 6 and 8), when taken together, suggest that the greatest growth in both the discharge and the user rate occurred in the ages from 45 to 74. Later, we speculate that these age groups experienced the greatest increases in hospitalizations because they have high morbidity but are not too aged to risk certain medical interventions.

Since the discharge rate is a function of the user rate and the stay rate ($D = U \times S$), the overall increase in the discharge rate for Medicare enrollees from 1967 to 1977 can be allocated to increases in each of its two components and the interaction of these two factors. The following relationship expresses this:

$$\Delta D = U_{67}\Delta S + S_{67}\Delta U + \Delta S\Delta U$$

where Δ terms represent changes in the period 1967-1977 and subscripts represent the 1967 base year, and:

- D = discharge rate
- U = user rate
- S = stay rate

Table 9 shows the result of allocating the change in the discharge rate to changes in its two components; the user rate and the stay rate and to an interaction factor. Of the total increase of 76 discharges per 1,000 enrollees from 1967 to 1977, 54 discharges per 1,000 enrollees (71 percent) were due to a growth in the proportion of Medicare enrollees hospitalized in a year, while an increase in the number of discharges per Medicare patient accounted for 19 discharges (25 percent). Thus, the greatest proportion of the increase in the discharge rate came from an increase in the rate of enrollees cared for in the hospital, rather than from an increase in the rate of multiple discharges.

TABLE 9
The Change in the Short-stay Hospital Discharge Rate Allocated to the Change in the User Rate and the Stay Rate, Medicare Enrollees Age 65 and Over, U.S., 1967 and 1977

Measure	1967	1977	Contribution to Change in Discharge Rate	
			Discharges per 1,000 Enrollees	Percent
Discharge Rate (Number of discharges per 1,000 enrollees)	259	335	76 ¹	100 ¹
User Rate (Number of persons hospitalized per 1,000 enrollees)	187	226	54	71
Stay Rate (Number of discharges per user)	1.38	1.48	19	25
Interaction Term	—	—	4	5

¹ Parts do not add to total due to rounding.

Note: The technique for ascribing the change in the discharge rate to its components is described in Clifford H. Springer, Robert E. Herlihy and Robert I. Beggs, *Advanced Methods and Models*, Vol. II of the Mathematics for Management Series, Richard D. Irwin, Inc., 1965, pp. 122-125.

Discharges by Length-of-Stay Interval

At the same time that the discharge rate was increasing, the distribution of discharges by length-of-stay intervals was changing significantly. The effect of this change is illustrated in Table 10. From 1967 to 1977 the distribution of discharges by length of stay shifted to shorter stays. In 1967, for example, stays of 2-3 and 4-5 days together accounted for 24 percent of all stays, and in 1977 they accounted for 31 percent. On the other hand, long stays of 29 days or more accounted for 10 percent of stays in 1967 but only 6 percent in 1977.

As shown in Table 10, the incidence of hospital stays of one day increased 17 percent compared to the 29 percent growth in the overall discharge rate. Stays of 2-3 days grew 72 percent which was more than any other interval. The growth of stays of 4-5 and 6-7 days also far outpaced the overall increase, growing by 61 and 41 percent. Thus, the increase in shorter hospital stays contributed greatly to the increase in the overall discharge rate.

Stays of 8-14 and 15-21 days increased by 31 and 17 percent. The incidence of stays of 22-28 days showed a slight decrease of 6 percent, and the rate of very long stays of 29 days and over decreased by 27 percent.

The decrease in the incidence of long stays is of interest in view of the findings of studies that have examined the medical and socio-economic situation of long-staying patients. (Goldmann, 1959; National Capitol Medical Foundation, 1977; Rosenfeld *et al.* 1957; and Van Dyke *et al.* 1963). The studies found that many long-staying patients did not need to be in an acute-care hospital. They were often persons with complex social and medical problems for whom post-hospital placement difficulties were frequently compounded by a shortage of appropriate long-term care facilities.

TABLE 10

Rate and Percent Distribution of Discharges by Length of Stay Interval for Medicare Enrollees Age 65 and Over, U.S., 1967 and 1977

Length of Stay (in days)	1967		1977		Percent Increase in Discharges Per 1,000 Enrollees 1967-1977
	Discharges Per 1,000 Enrollees	Percent Distribution	Discharges Per 1,000 Enrollees	Percent Distribution	
All Stays	259	100	335	100	29
1 day	12	5	14	4	17
2-3 days	29	11	50	15	72
4-5 days	33	13	53	16	61
6-7 days	32	12	45	13	41
8-14 days	74	29	97	29	31
15-21 days	35	14	41	12	17
22-28 days	18	7	17	5	-6
29 days and over	26	10	19	6	-27

Charges by Length-of-Stay Interval

Table 11 shows average charge per day for discharges of differing lengths of stay for 1967 and 1976. For both years one to three day stays have a charge per day considerably above the average. In part, this is due to the variable costs of a hospital stay, such as routine tests and other ancillary charges being spread over fewer days. Higher daily charges for short stays may also be due to a high proportion of serious emergency admissions and admissions ending in death. Medicare data (not shown) indicate that a much higher than average percent of 1-3 day stays end in death than do other stays.

Table 11 also shows that the pattern of average charge per day for stays beyond 40 days changed from 1967 to 1976. In 1967, the average daily charge for stays of more than 40 days was \$40, considerably less than the overall average of \$49. The average daily charge for stays of 41 days and over in 1976 of \$167 was very close to the overall average of \$169 per day.

TABLE 11
Average Charge Per Day in Short-stay Hospitals, by Length of Stay, Medicare Patients Age 65 and Over, 1967 and 1976

Length of Stay (in days)	Average Charge Per Day	
	1967	1976
All Stays	\$49	\$169
1-3 days	72	231
4-7 days	54	167
8-14 days	51	163
15-21 days	51	169
22-28 days	50	172
29-40 days	49	171
41 days and over	40	167

The contrast between the average charge per day for stays over 40 days between 1967 and 1976 very likely reflects a change in patterns of hospital practice. The lower average daily charge for stays over 40 days in 1967 may reflect the presence of a large proportion of chronically ill, long-staying patients requiring a lesser intensity of services. Perhaps by 1976 many of these types of patients were being discharged to other facilities, and the role of the hospital had shifted to caring for more acutely ill patients. The lack of a significant drop in average daily charges for stays beyond 40 days in 1976 may mean that hospitals had a higher proportion of acutely ill patients and a lower proportion of chronically ill patients than in 1967. This would mean an increase in hospital revenues even if occupancy remained unchanged.

These findings are also in line with Feldstein and Taylor's (1977) analysis of the rising cost of hospital care. They concluded that, due to the influence of hospital insurance, the character of a hospital day had changed as the intensity and sophistication of hospital services increased. They found that most of the growth in average cost per hospital day in excess of the rise in the general price level was due to an increased number of employees and non-labor inputs per patient day. Other studies have quantified the spread of technically sophisticated services (such as intensive care units or coronary care units) which increased the cost and complexity of hospital care (Russell, 1979), (Goldfarb *et al*, 1980).⁶ The increased intensity and complexity of services in a hospital stay, taken together with the growth in the rate of short hospital stays and the growth in the user rate, indicate a trend among the elderly of more persons using the hospital but having shorter stays with a higher intensity of services.

⁶ The Goldfarb *et al* article contains a comprehensive review of possible causes of the increases in intensity and sophistication of services.

The Role of Changes in Case-Mix in the Increasing Discharge Rate

The increase in the discharge rate for persons age 65 and over from 1967 to 1977 raises the question of the role of changes in diagnostic and surgical case-mix. Data from both NCHS and Medicare are used to examine this increase. Data on specific diagnoses or surgeries are

limited to the period 1970-1977 because of a change in 1970 in the diagnostic and surgical coding system used by NCHS.

Table 12 uses NCHS data and shows the discharge rates in the major diagnostic categories and individual diagnostic groups with the highest frequency for persons age 65 and over. As compared with the overall 22 percent increase in the discharge rate between 1970-77, there

TABLE 12
Number of Discharges Per 10,000 Population by Selected Leading First-Listed Diagnostic Groups for Persons Age 65 and Over, U.S., 1970, 1972, 1975 and 1977¹

Diagnostic Group and ICDA-8 Code	Number of First-Listed Diagnoses Per 10,000 Population				Change in Rate 1970-1977 (Discharges Per 10,000 Persons)	Percent Change (1970-1977)
	1970	1972	1975	1977		
All Conditions	3068	3330	3593	3744	676	22
Neoplasms (140-239)	310	336	385	409	99	32
Malignant neoplasms (140-209)	271	294	338	360	89	33
Endocrine, nutritional and metabolic diseases (240-279)	114	120	123	122	8	7
Diabetes mellitus (250)	89	94	93	91	2	2
Diseases of the nervous system and sense organs (320-389)	160	174	197	214	54	34
Cataract (374)	82	90	108	111	29	35
Disease of the circulatory system (390-458)	882	982	1047	1109	227	26
Acute myocardial infarction (410)	84	93	87	93	9	11
Chronic ischemic heart disease (412)	290	316	322	324	34	12
Congestive heart failure (427.0)	59	73	88	104	45	76
Cerebrovascular disease (430-438)	194	207	202	205	11	6
Diseases of the respiratory system (460-519)	301	320	349	352	51	17
Pneumonia, all forms (480-486)	96	103	112	110	11	14
Diseases of the digestive system (520-577)	429	459	490	482	53	12
Cholelithiasis, cholecystitis and cholangitis (574, 575)	80	82	78	73	-7	-9
Diseases of the genitourinary system (580-629)	249	254	265	281	32	13
Hyperplasia of prostate (600)	76	75	73	81	5	7
Diseases of the musculoskeletal system (710-738)	130	151	157	170	40	31
Arthritis, all forms (710-718)	68	78	85	88	20	29
Accidents, poisonings and violence (800-999)	266	279	301	315	49	18
Fractures, neck of femur (820)	63	61	67	70	7	11
Other fractures (800-819, 821-829)	91	97	94	101	10	11
Other conditions (Residual)	227	255	279	290	63	28

¹ The diagnostic categories and diagnostic groups were selected because they were the most frequent for persons age 65 and over in 1975.

Source: 1970 and 1977, unpublished tables from NCHS; 1972 and 1975, NCHS, "Inpatient Utilization of Short-Stay Hospitals by Diagnosis, United States" for 1972 and 1975.

were no strikingly different increases in any major diagnostic category. Hospitalizations in the categories of neoplasms, diseases of the nervous system and sense organs, and diseases of the musculoskeletal system increased by 32, 34 and 31 percent, somewhat more than the overall 22 percent increase. The leading cause of hospitalization, diseases of the circulatory system, grew by 227 discharges per 10,000 persons or 26 percent. This increase of 227 discharges per 10,000 persons accounted for one-third of the total increase of 676 discharges per 10,000 in the discharge rate from 1970 to 1977. When the increase in discharges for diseases of the circulatory system (227 discharges per 10,000) is taken together with the increase of 89 discharges per 10,000 in the category of malignant neoplasms, the combined increase of 316 discharges accounts for about one-half of the overall increase in the discharge rate. Thus, from a diagnostic case-mix point of view, the increase in the discharge rate is characterized by moderate increases in the major categories, rather than very large percentage increases in a few groups.

Among individual diagnostic groups the rate of discharges for congestive heart failure showed by far the largest percentage increase, 76. The rate of discharges for cataract and malignant neoplasms showed larger than average increases of 35 and 33 percent.

Just as the overall hospitalization rate has been growing at a faster pace for persons aged 65 and over than for the rest of the population, so the incidence of surgeries has been increasing faster for the aged. As shown in Table 13, from 1965 to 1977 the number of surgeries per 1,000 population increased more for older persons. Persons aged 65 and over experienced a 58 percent increase in the rate of operations as compared with a 24 percent increase for persons under age 65. It has been suggested that the increase in surgery among the aged may be due in part to, "technological advances that make surgery safer and more effective," (Machlin and Kleinman, 1980).

One notable example of the effect of technological advances on the surgical rate is extraction of lens (cataract). Technical improvements reduced the complexity of the procedure, and its incidence grew from 53 operations per 10,000 persons age 65 and over in 1965 to

112 in 1975 (Ranofsky, 1978)⁷ while the average length of stay for cataract operations dropped from 7.9 days to 4.7 days from 1969 to 1977 for Medicare enrollees. Some other technical advances which may have influenced the incidence of surgeries are the introduction of new materials for prostheses, new cements in the field of orthopedics, and advances in cardiology including bypass surgery and heart pacemakers.

TABLE 13
Number of Surgical Operations Per 1,000 Population
by Age, U.S., 1965, 1970, 1975 and 1977

Age	1965	1970	1975	Percent Change	
				1977	1965-1977
All Ages	77	78	96	100	30
Under 65	74	74	89	92	24
Under 15	41	40	41	41	0
15-44	89	86	102	105	18
45-64	99	96	123	125	26
65 and over	105	123	155	166	58

Note: The data in this table refer to "all-listed" operations in contrast to Table 15 which presents data on "first-listed" operations. The NCHS uses "all-listed" operations to include all operations coded for a discharge.

Source: NCHS, "Surgical Operations in Short-Stay Hospitals, United States, 1975," *Vital and Health Statistics*, Series 13, Number 34, April 1978, p. 16, and unpublished tables from NCHS.

Data on the rate and percent of discharges with surgery for Medicare enrollees are shown in Table 14. The table shows that the rate of discharges with surgery has increased along with the overall discharge rate. Discharges with surgery have comprised about 30 percent of all discharges since the Medicare program began. The data show that the percent of discharges with surgery dropped slightly after 1967, the first full year of the program, and then began to rise slightly after 1971. In 1971, 30 percent of discharges had surgery; in 1977 the percent with surgery had risen to 34. This trend, though slight, may signal a tendency to treat a larger proportion of cases with surgery.

⁷ The data cited are for "all-listed" cataract operations in contrast to the data in Table 15 on "first-listed" operations. See the note to Table 13.

TABLE 14
Number of Discharges With and Without Surgery Per 1,000 Medicare Enrollees, U.S., 1967-1977

Year	Discharges Per 1,000 Enrollees			Percent Distribution		
	Total	With Surgery	Without Surgery	Total	With Surgery	Without Surgery
1967	259	83	177	100	32	68
1968	284	86	198	100	30	70
1969	295	90	205	100	30	70
1970	293	90	203	100	31	69
1971	288	87	201	100	30	70
1972	299	93	207	100	31	69
1973	303	97	206	100	32	68
1976	327	103	223	100	32	68
1977	335	113	222	100	34	66

Note: Data for 1974 and 1975 are not available.

The changes in the rate of discharges in major surgical categories, and in the most common surgical groups within these categories from 1970 to 1977 for persons age 65 and over are shown in Table 15. Overall, discharges with surgery grew by 292 discharges per 10,000 persons, increasing from 896 to 1188 discharges per 10,000 persons.

By far the largest increase in the discharge rate for a major surgical category was in vascular and cardiac surgeries which grew 152 percent from 1970 to 1977. The increase of 73 discharges per 10,000 persons in this category represented one quarter of the overall increase of 292 discharges with surgery per 10,000 persons. No other surgical category showed nearly the rate of increase shown by vascular and cardiac surgeries. Table 16 shows that the rate of vascular and cardiac surgeries also increased rapidly for persons age 45-64 in the same period. The next largest percentage increases in the surgical rates in major categories for the aged were found for biopsies and thoracic surgery (Table 15) which increased 76 and 71 percent. Among individual surgical groups, insertion or replacement of electronic heart device showed the largest increase of 186 percent. This operation accounts for about one third of all first-listed vascular and cardiac surgeries for the aged.⁸

Data on surgeries involving the heart, as opposed to all cardiac and vascular surgeries, are shown in Table 17. The data show a large percentage increase in the rate of heart operations for persons age 65 and over and an even larger increase among persons 45 to 64 years.⁹

The large increase in the rate of heart surgeries among the 45-64 and 65 and over age groups raises the question of its relation to the decline in mortality from heart disease,

the leading cause of death in the United States. Table 18 shows the death rate from heart disease for the age groups with the highest mortality from heart disease. For all ages the age-adjusted death rate from heart disease decreased 16 percent from 1970 to 1977. For persons age 45 to 64, the death rate from heart disease declined 17 percent. For persons age 65 and over, the decline from 1970 to 1977 was 13 percent.

Some studies have attempted to relate the decline in mortality from heart disease to certain improvements in treatment such as coronary care units and by-pass surgery and to changes in risk factors such as hypertension, smoking, or serum cholesterol levels. Definite conclusions have not been reached, but it is generally believed that the role of improvements in treatment has been less than the role of changes in risk factors. (Kleinman *et al*, 1979; Stallones, 1980; Stern, 1979). The data presented here showing large increases in heart operations suggest the need to further examine the benefits of these operations and any relation between the decline in deaths from heart disease and the increase in heart operations.

⁸ As noted above, from 1965 to 1975 cataract operations increased 111 percent. Since much of the increase occurred from 1965 to 1970, cataract surgery does not show an unusually large increase in Table 15. There were 53 all-listed cataract operations per 10,000 persons age 65 and over in 1965, 84 in 1970 and 112 in 1975 (Ranofsky, 1978). As explained above, data on most surgeries before 1970 were not available in a comparable form to data for 1970 and after because of a coding system change.

⁹ Data on surgeries involving the heart were selected from surgical groups in the NCHS category of "vascular and cardiac surgery" to separate operations involving the heart from those on blood vessels and the lymphatic system.

TABLE 15
Number of Selected First-Listed Surgical Operations Per 10,000 Population, Persons Age 65 and Over, U.S., 1970, 1972, 1975 and 1977¹

Surgical Group and ICDA-8 Code	Number of First-Listed Operations Per 10,000 Population				Change in Rate 1970-1977	Percent Change 1970-1977
	1970	1972	1975	1977		
All operations	896	957	1190	1188	292	33
Neurosurgery (01-05)	14	15	21	22	8	57
Ophthalmology (06-14)	106	117	137	146	40	38
Extraction of lens (14.4-14.6)	83	90	110	110	27	33
Otorhinolaryngology (16-21)	24	22	25	26	2	8
Vascular and cardiac surgery (24-30)	48	61	88	121	73	152
Insertion or replacement of electronic heart device (30.4-30.5)	14	21	29	39	25	179
Thoracic surgery (32-35)	17	24	28	29	12	71
Abdominal surgery (38-48)	190	196	213	207	17	9
Repair of inguinal hernia (38.2-38.3)	44	45	51	44	0	0
Exploratory laparotomy or celiotomy (39.1)	23	24	26	23	0	0
Cholecystectomy (43.5)	38	40	42	42	4	11
Resection of small intestine or colon (47.4-47.6)	18	21	24	26	8	44
Proctological surgery (50-52)	22	24	22	27	5	23
Urological surgery (54-61)	145	147	165	176	31	21
Local excision and destruction of lesion of bladder (56.1-56.2)	17	19	23	24	7	41
Prostatectomy (58.1-58.3)	69	68	70	79	10	14
Breast surgery (65)	15	18	23	22	7	43
Mastectomy (65.2-65.6)	14	17	22	20	6	43
Gynecological surgery (67-72)	49	45	48	49	0	0
Orthopedic surgery (80-90)	145	158	177	191	46	32
Closed reduction of fracture without fixation (82.0)	28	26	23	24	-4	-14
Reduction of fracture with fixation (82.2)	56	60	65	71	15	27
Plastic surgery (92-94)	47	47	50	52	5	11
Excision of lesion of skin and subcutaneous tissues (92.1-92.2)	26	29	28	31	5	19
Biopsy (A1-A2)	58	69	96	102	44	76
Other (Residual)	15	16	17	18	3	20

¹ The surgical categories and surgical groups were selected because they were the most frequent for persons age 65 and over in 1975. Source: Data for 1970, 1972 and 1977 are from unpublished tabulations from NCHS, 1975 data are from NCHS "Surgical Operations in Short-Stay Hospitals, United States, 1975," *Vital and Health Statistics*, Series 13, No. 34, April 1978.

TABLE 16
Number of First-Listed Surgical Operations for Vascular and Cardiac Surgery (ICDA-8 Codes 24-30) Per 10,000 Persons, by Age, U.S., 1970, 1972, 1975, 1977.

Age	1970	1972	1975	1977	Change 1970-1977	
					Operations Per 10,000 Persons	Percent
All Ages	20	24	32	40	20	100
Under Age 15	6	7	8	8	2	33
15-44	14	14	15	16	2	14
45-64	37	52	72	89	52	140
65 Years and Over	48	61	88	121	73	152

Source: Data for 1970, 1972 and 1977 are from unpublished tabulations from NCHS, data for 1975 are from "Surgical Operations in Short-Stay Hospitals, United States, 1975," *Vital and Health Statistics*, Series 13, No. 34, April 1978.

TABLE 17
Number of Selected First-Listed Surgical Operations for Selected Operations Involving the Heart* Per 10,000 Persons, by Age, U.S., 1970, 1972, 1975, 1977.

Age	1970	1972	1975	1977	Change 1970-1977	
					Operations Per 10,000 Persons	Percent
All Ages	6.4	9.8	15.2	21.2	14.8	231
Under Age 15	3.2	3.6	4.1	4.9	1.7	53
15-44	3.4	3.9	5.6	6.1	2.7	79
45-64	11.2	22.7	37.1	52.8	41.6	371
65 Years and Over	18.6	25.8	40.4	61.9	43.3	233

* The operations and their ICDA-8 Codes are:
 Operations on valves of heart (29.2-29.4)
 Cardiac revascularization (29.8)
 Cardiac catheterization (30.2)
 Insertion or replacement of electronic heart device (30.4, 30.5)

Source: Data for 1970, 1972 and 1977 are from unpublished tabulations from NCHS, data for 1975 are from "Surgical Operations in Short-Stay Hospitals, United States, 1975," *Vital and Health Statistics*, Series 13, No. 34, April 1978.

TABLE 18
Number of Deaths from Diseases of the Heart Per 10,000 Persons by Age, U.S., Selected Years 1950 to 1977.

Age	1950	1970	1977	Change, 1950-1970		Change, 1970-1977	
				Deaths Per 10,000 Persons	Percent	Deaths Per 10,000 Persons	Percent
All Ages (age adjusted) ¹	31	25	21	-6	-19	-4	-16
All Ages, crude	36	36	33				
45-64	53	42	35	-11	-21	-7	-17
65 Years and Over	284	268	233	-16	-6	-35	-13

¹ Age adjusted by the direct method to the total population of the United States in 1940, using 11 age groups.
 Source: For all ages and for persons age 65 and over; *Health, United States, 1980*, USDHHS, Public Health Service, Office of Health Research, Statistics and Technology, DHHS Pub. No. (PHS) 81-1232, Hyattsville, MD, 1980, p. 138. Rates for persons age 45 to 64 were computed using *Vital Statistics of the United States, 1950*, Vol. III, Table 52, and *Vital Statistics of the United States for 1970 and 1977*, Vol. II—Mortality, Part B, Section 7, Table 34.
 Population data for 1950 are from U.S. Bureau of the Census, *Statistical Abstract of the United States: 1955*, Washington, D.C., 1955. Population data for 1970 are from U.S. Bureau of the Census, *Statistical Abstract of the United States: 1980*, Washington, D.C., 1980. Population data for 1977 are from U.S. Bureau of the Census, *Current Population Reports; Population Estimates and Projections*, "Estimates of the Population of States by Age, July 1, 1971 to 1979," Series P-25, No. 875, 1980.

Hospital Insurance Coverage for Persons Under and Over Age 65

Could differences in trends in insurance coverage for hospital care between persons under age 65 and 65 years of age and over help explain the differences in the increases in discharge rates between these age groups? The percentage of persons age 65 and over with hospital insurance hardly changed during the study period since most were covered by Medicare. Data from the National Health Interview Survey, shown in Table 19, indicate that the percentage of persons under age 65 with private hospital insurance also remained almost unchanged.

TABLE 19
Percent of Persons with Private or Medicare Hospital Insurance by Age, U.S., 1968, 1970, 1972 and 1974.

Year	Age	
	Under Age 65	65 Years and Over
1968	78	95
1970	78	96
1972	77	96
1974	78	97
1976	78	96

Note: The data for persons under age 65 are for private hospital insurance coverage and the data for persons age 65 years and over are for Medicare and/or private health insurance. Data on Medicaid coverage for both age groups and on Medicare coverage for the under 65 population (under the Medicare coverage for certain disabled persons begun in 1973) are not shown because they were not available for all years.

Source: Charles S. Wilder, "Hospital and Surgical Insurance Coverage, United States, 1974," *Vital and Health Statistics*, Series 10, No. 17, DHEW Pub. No. (HRA) 77-1545, 1977, p.5 and Larry S. Corder, "Health Care Coverage: United States, 1976," *Advance Data*, No. 44, National Center for Health Statistics, DHEW, 1979.

Another measure of insurance coverage is the percent of total personal health care expenditures paid by third-parties (primarily, private health insurance and government). Table 20 shows that from 1967 to 1977 third-party payments as a percentage of total expenditures actually grew more for persons under age 65 than for persons age 65 and over. Thus, differences in insurance coverage by age do not appear to explain differences in the increase in hospitalization rates between the aged and the rest of the population.

The Supply of Hospitals and Physicians

Another factor which may be related to the increase in the Medicare discharge rate is the supply of hospitals and physicians. Table 21 presents data on the number of hospitals and number of hospital beds certified for participation in Medicare. The number of hospitals changed little, but the number of beds increased 21 percent as average hospital size grew. In relation to the entire

TABLE 20
Third Party Payments (Private Health Insurance, Government and Philanthropy and Industry) as a Percent of Personal Health Care Expenditures by Age, U.S., 1967-1977.

Fiscal Year	Age	
	Under Age 65	65 Years and Over
1967	52	63
1968	54	72
1969	56	72
1970	57	67
1971	59	66
1972	62	64
1973	62	65
1974	61	72
1975	64	74
1976	65	74
1977	68	74

Percent Change		
1967-1977	31	17

Source: Robert M. Gibson and Charles R. Fisher, "Age Differences in Health Care Spending, Fiscal Year 1977," *Social Security Bulletin*, Vol. 42, No. 1, January 1979 pp. 3-16. Robert M. Gibson, Marjorie Smith Mueller and Charles R. Fisher, "Age Differences in Health Care Spending, Fiscal Year 1976," *Social Security Bulletin*, Vol. 40, No. 8, August 1977, pp. 3-14. Marjorie Smith Mueller and Robert M. Gibson, "Age Differences in Health Care Spending, Fiscal Year, 1974," *Social Security Bulletin*, Vol. 38, No. 6, June 1975, pp. 3-16.

TABLE 21
Number of Participating Short-stay Hospitals Under Medicare, Number of Medicare Beds, Number of Medicare Beds per 1,000 U.S. Population and Per 1,000 Aged Medicare Enrollees, 1967-1976

Year	Short-Stay Hospitals Under Medicare			
	Number	Number of Certified Beds	Beds Per 1,000 U.S. Population	Beds Per 1,000 Aged Medicare Enrollees
1967	6,299	779,908	3.9	40
1968	6,276	780,454	3.9	39
1969	6,345	823,703	4.1	41
1970	6,332	847,838	4.1	42
1971	6,301	854,388	4.1	41
1972	6,301	877,200	4.2	42
1973	6,262	895,600	4.3	42
1974	6,257	912,731	4.3	41
1975	6,213	921,800	4.3	41
1976	6,168	946,500	4.4	41

Source: Helbing, 1980.

population the bed supply grew from 3.9 to 4.4 beds per 1,000 persons, but the number of beds per 1,000 aged Medicare enrollees changed little because the Medicare population and the number of beds grew at the same rate. With the supply of beds per Medicare population constant, the decrease in Medicare ALOS noted earlier, created more room for the increase in the discharge rate.

The number of physicians increased 28 percent from 1968 to 1978 (Table 22). In relation to the number of Medicare enrollees, the supply of physicians increased from 14.7 physicians per 1,000 enrollees in 1968 to 15.5 in

1978. (Data not shown in table). An earlier study (Pine *et al*, 1981) showed that internal medicine and surgery were the two large specialty groups ranking highest in percent of total income derived from Medicare patients. Thus, it is interesting to observe that internal medicine experienced the largest growth of the major specialties. The growth in the number of internists is a part of the overall increase in the percentage of physicians who are specialists as opposed to general practitioners; an increase that parallels the increasing technological sophistication of hospital care mentioned previously.

TABLE 22
Number of Professionally Active Physicians by Selected Primary Specialty, U.S., Selected Years 1968-1978

Year	Total	General Practice ¹	Internal Medicine ²	Surgical Specialties ³	Obstetrics Gynecology	Pediatrics	Psychiatry	All Other Specialties
1968	290,750	60,258	48,922	62,731	17,655	16,282	19,697	65,205
1970	304,926	56,804	53,527	66,047	18,498	17,505	20,901	71,644
1972	315,522	54,357	58,575	69,846	19,820	19,176	22,319	71,429
1974	325,567	53,152	63,005	71,516	20,607	20,277	23,075	73,935
1976	343,876	54,631	70,253	75,508	21,908	22,108	24,196	75,272
1978	371,343	55,414	78,295	77,625	23,591	24,140	25,379	86,899
Percent Change 1968 to 1978								
	28	-8	60	24	34	48	29	33

¹ Includes general and family practice.

² Includes internal medicine and the sub-specialties of gastroenterology, pulmonary diseases, allergy and cardiovascular.

Source: USDHEW, Public Health Service, *Health, United States, 1978*, p. 340, and *Health, United States, 1980*, p. 190.

³ Excludes obstetrics and gynecology.

Discussion and Conclusions

If we could be confident that the increased number of people hospitalized means more Medicare enrollees are receiving needed care, then the first 13 years of Medicare have seen many of the Medicare program's goals being met. Access has increased; shorter ALOS could indicate that care is provided more efficiently, and a steady days-of-care rate means hospital services were provided to more Medicare beneficiaries without increased pressure on hospital occupancy or the need for additional hospital beds per 1,000 aged persons. The increased Medicare enrollment in the past 10 years would naturally add to the need for additional hospital capacity.

At present, concern about equity of access has been replaced to some extent by concern about rising burden of health care costs and concern about unnecessary services. Such concerns stem partly from studies of the large geographic differences in use of services and from recognition of the professional uncertainty about the indications for many common surgical procedures. (See Gornick, 1977; Lewis, 1969; Wennberg and Gittleman, 1975; Wennberg *et al.*, 1980). The findings presented here show increased numbers of aged people using the hospital from 1967 to 1979. This also raises the question of the appropriateness of hospital care. The essential focus must now be whether such services are appropriate in terms of benefit to the patient.

The decline in very long stays and the change in the pattern of charges by length of stay probably reflects a change in the role of the hospital, with more hospital days being devoted to rendering high-level acute care and less to caring for the long-staying, chronically ill, multiple problem cases who do not need acute hospital services. Once again, the data suggest that a goal of the Medicare program, to provide care for the chronically ill less in the acute hospital and more in other settings, has been achieved. The question of the type and quality of care received outside the acute hospital by the kinds of cases that would have been cared for in the hospital in the past remains to be answered.

The continuing trend for the discharge rate to increase has implications for prospective reimbursement systems proposed to replace the current cost-based reimbursement system now used by Medicare to pay hospitals. One such scheme, begun in New Jersey on an experimental basis in 1980, is reimbursement per-case based on a diagnostic adjusted case-mix index. In that scheme, the number of cases becomes a multiplier, so that total reimbursement is directly proportional to the number of cases. The data presented show that, if case mix remains unchanged, such a system instituted nationwide will lead to increased payments to hospitals if the number of cases (discharges) increases in the future as it has in the past. Those making policy about hospital reimbursement have already recognized that each system presents varying incentives for hospitals to alter utilization parameters (admissions, ALOS, case-mix); the present study indicates they should also take into account the well-established secular trends in utilization over which hospitals may have little control.

The upward trend in the discharge rate also has implications for the design of utilization review programs. Utilization review and Professional Standards Review Organizations (PSRO) have often emphasized review of length of stay over review of the necessity of admission. Length of stay review may have little effect on the rate of admissions; utilization review programs may need to strengthen monitoring of admissions. However, given the professional uncertainty regarding indications for admission, guidelines based on current thinking are not likely to change admission patterns (Wennberg *et al.*, 1981).

The analyses in this article have, for the most part, examined how the Medicare discharge rate has grown rather than why it has grown. The reason the rate has increased more for the Medicare population than for the population under age 65 is still not clear. Changes in the demographic composition and mortality experience were shown not to be factors in the increase for Medicare beneficiaries. The rate of discharges with surgery increased from 1967 to 1977, but the rate of discharges without surgery increased as well. Changes in insurance coverage are probably not a factor in the increase since the aged were covered by Medicare throughout the study period, and the percent of persons under age 65 covered by private hospital insurance also remained virtually the same. In fact, from 1967 to 1977 the percent of personal health care expenditures paid by third parties as opposed to percent of persons with coverage grew more for persons under age 65 than for persons age 65 and over. The supply of physicians and hospital beds also increased during the study period, but the rate of increase was close to the rate of increase in the number of Medicare enrollees.

One might speculate that the increase in the discharge rate is due to a number of interrelated factors. The initial effect of Medicare coverage in 1966 freed patients and physicians from concern about the costs of hospital care. Then, as suggested by Feldstein and Taylor, Medicare coverage may have provided an impetus for patients, physicians and hospitals to seek and provide more frequent and sophisticated services.

There are economic rewards to hospitals and physicians from increased hospitalizations. The current Medicare payment mechanism is such that amounts reimbursed to hospitals are highest per day for the first few days of a stay, reflecting the more concentrated use of ancillary services during the beginning of a stay. The trend for a greater number of short, but more care-intensive stays, and the decline in long stays of a semi-custodial nature has probably meant increased income for hospitals.

From the physician's point of view increased hospitalization can mean increased income. The physician in most cases decides whether or not to admit a patient. Pauley and Redisch (1973) emphasize the role of physicians in making decisions about the provision of hospital care and propose that such decisions are made by physicians to maximize their income.

But why would not these same factors have caused the discharge rate for the under-65 population to rise at the same rate? One reason might be that the under-65

population has less leisure time to spend seeking and receiving care. A more important reason might be that the over-65 population has more ailments for which medical treatment might be sought. There is only so much care that might be appropriate for a 25 year old person, while a 70 year old person might have a number of ailments for which medical care might offer hope of relief. In addition, technical advances, perhaps spurred by the advent of Medicare coverage, may have been adopted at a more rapid rate for conditions common among the elderly than for other conditions. We noted the large increase in the number of internists, a specialty often involved in the care of older persons. We also noted the discharge rate for persons age 45-64 also increased significantly, though not as much as the rate for persons age 65 and over. Persons in this age group would also have a higher morbidity and thus more reasons to seek care.

There are certainly risks associated with hospital care. Studies at individual hospitals of nosocomial bacteremias, iatrogenic illnesses and surgical mishaps have shown some of the risks. (Spengler, 1978; Steel *et al*, 1981; Couch *et al*, 1981). Other authors suggest excess mortality in areas with high surgery rates (Wennberg *et al*, 1980). As more Medicare enrollees are exposed to these risks, the undesirable, as well as the desirable, aspects of hospitalization increase. As the data show, the trend is for more enrollees to be hospitalized and for more multiple hospitalizations.

The central conclusion of this article—that more Medicare enrollees are being cared for with shorter hospital stays—leads to the important topic of the necessity and quality of the care they receive. The next generation of studies should begin to focus on the nature and appropriateness, as well as the cost, of the hospital services rendered to Medicare beneficiaries.

Acknowledgements

The authors are indebted to HCFA's Office of Statistics and Data Management, under the direction of Carol Walton, who develop and maintain the Medicare Statistical System and to the Hospital Care Statistics Branch, Mary Moien, Chief, of the National Center for Health Statistics for their help in obtaining data for this study. The authors would like also to thank Jill Hare and Kay Barrett for their aid in preparing this paper. They would also like to thank Marian Gornick for her many helpful suggestions and Allen Dobson and Judith Lave for their careful review.

Technical Note: Reliability of Estimates

Medicare data in this report are estimates based on a 20-percent sample of the enrolled population and hence are subject to sampling errors. Table A shows estimated standard errors for discharges per 1,000 persons enrolled, the most frequently used estimate in this paper. Readers requiring standard errors for other types of estimates should contact the author. Use of Table A requires knowledge of the number of persons enrolled. This can be obtained from HCFA's annual enrollment series of publications.

A number of approximations were required to derive estimates of standard errors that would be applicable to a wide variety of items. As a result, the standard errors presented provide a general order of magnitude rather than the exact standard error for any specific item.

Sampling errors for data from the NCHS Hospital Discharge Survey and Health Interview Survey can be obtained from the publications listed in the sources to the tables in this paper.

TABLE A
Approximate Standard Error of Discharges Per 1,000 Enrolled

Estimated Discharges Per 1,000 Enrolled	Base of Rate (Number of Persons Enrolled in Thousands)										
	25	50	100	250	500	750	1,000	2,500	5,000	10,000	25,000
10	2.0	1.4	.97	.61	.43	.35	.30	.19	.13	.092	.058
20	2.7	1.9	1.4	.85	.60	.49	.42	.26	.19	.13	.081
30	3.4	2.4	1.7	1.0	.73	.59	.51	.32	.23	.16	.099
40	3.9	2.7	1.9	1.2	.84	.68	.59	.37	.26	.18	.11
50	4.3	3.0	2.1	1.3	.94	.76	.66	.41	.29	.20	.13
100	6.1	4.3	3.0	1.9	1.3	1.1	.92	.58	.41	.29	.18
150	7.4	5.2	3.6	2.3	1.6	1.3	1.1	.71	.50	.35	.22
200	8.5	6.0	4.2	2.6	1.8	1.5	1.3	.81	.57	.40	.25
250	9.5	6.7	4.7	2.9	2.1	1.7	1.4	.91	.64	.45	.28
300	10.0	7.3	5.1	3.2	2.3	1.8	1.6	.99	.70	.49	.31
350	11.0	7.9	5.5	3.5	2.4	2.0	1.7	1.1	.75	.53	.33
400	12.0	8.4	5.9	3.7	2.6	2.1	1.8	1.1	.80	.56	.35
450	13.0	8.9	6.2	3.9	2.8	2.2	1.9	1.2	.85	.60	.38
500	13.0	9.4	6.6	4.1	2.9	2.4	2.0	1.3	.90	.63	.40
550	14.0	9.8	6.9	4.3	3.0	2.5	2.1	1.3	.94	.66	.41

References

Anderson, Gerard, USDHHS, Office of Assistant Secretary for Planning and Evaluation, "Variations in Per Capita Community Hospital Expenditures," processed, paper presented at the December 1981 meeting of the American Economic Association.

Bunker, John P., "A Comparison of Operations and Surgeons in the United States and in England and Wales." *The New England Journal of Medicine*, Vol. 282, No. 3, January 15, 1970, pp. 135-144.

Chiswick, Barry R., "Hospital Utilization: An Analysis of SMSA Differences in Occupancy Rates, Admission Rates, and Bed Rates," *Explorations in Economic Research*, Vol. 3, No. 3, Summer 1976, pp. 326-369.

Couch, Nathan P. et al, "The High Cost of Low-Frequency Events: The Anatomy and Economics of Surgical Mishaps," *The New England Journal of Medicine*, Vol. 304, No. 11, March 12, 1981, pp. 634-637.

Deacon, Ronald, et al, "Analysis of Variations in Hospital Use by Medicare Patients in PSRO Areas, 1974-1977," *Health Care Financing Review*, Vol. 1, Issue 1, Summer 1979, pp. 79-107.

Feldstein, Martin and Amy Taylor, "The Rapid Rise of Hospital Costs." Staff Report, Executive Office of the President, Council on Wage and Price Stability, 1977.

Goldfarb, Marsha G., et al, "Health Care Expenditures," *Health, United States 1980*, DHHS Pub. No. (PHS)81-1232, National Center for Health Statistics, Hyattsville, MD, 1980, pp. 101-116.

Goldmann, Franz, "Prolonged Stay in General Hospitals." *Geriatrics*, Vol. 14, pp. 789-800, December, 1959.

Gornick, Marian, "Trends and Regional Variations in Hospital Use Under Medicare," *Health Care Financing Review*, Vol. 3, No. 3, March 1981, pp. 41-73.

- Gornick, Marian, "Medicare Patients: Geographic Differences in Hospital Discharge Rates and Multiple Stays." *Social Security Bulletin*. Vol. 40, No. 6, June 1977, pp. 22-41.
- Helbing, Charles, "Ten Years of Short-Stay Hospital Utilization and Costs Under Medicare: 1967-1976." *Health Care Financing Research Report*, USDHHS, Health Care Financing Administration, HCFA Pub. No. 03053, 1980.
- Institute of Medicine, *Reliability of Medicare Hospital Discharge Records*, Washington, D.C., November 1977.
- Institute of Medicine, *Reliability of National Hospital Discharge Survey Data*, Washington, D.C., 1980.
- Kleinman, Joel C., Jacob J. Feldman, and Mary A. Monk, "The Effects of Changes in Smoking Habits on Coronary Heart Disease Mortality." *American Journal of Public Health*, Vol. 69, No. 8, August 1979, pp. 795-802.
- Lembcke, Paul A., "Measuring the Quality of Medical Care Through Vital Statistics Based on Hospital Service Areas: 1. Comparative Study of Appendectomy Rates." *American Journal of Public Health*, Vol. 42, pp. 276-286, March 1952.
- Lewis, Charles E., "Variations in the Incidence of Surgery." *New England Journal of Medicine*. Vol. 281, No. 16, October 16, 1969, pp. 880-884.
- Lintzeris, George, James Lubitz and Ronald Deacon, "Medicare: Hospital Use Rates of Aged Enrollees by Health Service Area, 1974-1977" *Health Care Financing Monograph*, Health Care Financing Administration, 1981.
- Lubitz, James, "Different Data Systems, Different Conclusions? Comparing Hospital Use Data for the Aged from Four Data Systems." *Health Care Financing Review*, Vol. 2, No. 4, Spring 1981, pp. 41-60.
- Lubitz, James, Marian Gornick and Ronald Prihoda, "Use and Costs of Medicare Services in the Last Year of Life," *Internal Working Paper*, DHHS, Health Care Financing Administration, September, 1981, Processed.
- Machlin, Steven R., and Joel C. Kleinman, "Regional and Income Differentials in Surgery," *Health, United States 1980*, DHHS Pub. No. (PHS) 81-1232, National Center for Health Statistics, Hyattsville, MD, 1980, pp. 51-55.
- National Capital Medical Foundation, "Inappropriate Hospital Stays, 1976." Processed, Washington, D.C., 1977. Study financed in part by contract No. HEW-100-77-0013, Office of the Assistant Secretary for Planning and Evaluation, U.S. Department of Health, Education, and Welfare.
- Pauly, Mark, and Michael Redisch, "The Not-For-Profit Hospital as a Physicians' Cooperative," *American Economic Review*, Vol. 63, No. 1, March 1973, pp. 87-99.
- Pettengill, Julian K., "Trends in Hospital Use by the Aged." *Social Security Bulletin*. Vol. 35, No. 7, July 1972, pp. 3-15.
- Pine, Penelope *et al.*, "Analysis of Services Received Under Medicare by Specialty of Physician," *Health Care Financing Review*, Vol. 3, No. 1, September 1981, pp. 89-116.
- Piro, Paula A., and Theodore Lutins, "Utilization and Reimbursements Under Medicare for Persons Who Died in 1967 and 1968." *Health Insurance Statistics*, (HI-51), DHEW Pub. No. (SSA) 74-11702, USDHEW, Social Security Administration, 1973.
- Ranofsky, Abraham, "Surgical Operations in Short-Stay Hospitals, United States, 1975," *Vital and Health Statistics*, Series 13, No. 34, DHEW Pub. No. (PHS) 78-1785, Hyattsville, MD, 1978.
- Restuccia, Joseph D., and Don C. Holloway, "Barriers to Appropriate Utilization of an Acute Facility." *Medical Care*. Vol. 14, No. 7, July, 1976, pp. 559-573.
- Rosenfeld, Leonard S., Franz Goldmann and Leo A. Kaprio, "Reasons for Prolonged Hospital Stay." *Journal of Chronic Diseases*. Vol. 6, pp. 141-152, August, 1957.
- Rothberg, David L., Jennifer Pinto and Paul M. Gertman, "Medicare Utilization in the United States: PSRO and Regional Impacts," *Health Services Research*, Vol. 15, No. 3, Fall 1980, pp. 249-270.
- Russell, Louise, *Technology in Hospitals*, The Brookings Institution, Washington, D.C., 1979.
- Spengler, Robert F., and William B. Greenough III, "Hospital Costs and Mortality Attributed to Nosocomial Bacteremias," *Journal of The American Medical Association*, Vol. 240, No. 22, November 24, 1978, pp. 2455-2458.
- Stallones, Reuel A., "The Rise and Fall of Ischemic Heart Disease," *Scientific American*, Vol. 243, No. 5, November 1980, pp. 53-59.
- Steel, Knight, *et al.*, "Iatrogenic Illness on a General Medical Service at a University Hospital," *The New England Journal of Medicine*, Vol. 304, No. 11, March 12, 1981, pp. 638-642.
- Stern, Michael P., "The Recent Decline in Ischemic Heart Disease Mortality," *Annals of Internal Medicine*, Vol. 91, No. 4, October 1979, pp. 630-640.
- Van Dyke, Frank, Virginia Brown, and Ann-Marie Thom. *Long Stay Hospital Care*. Columbia University School of Public Health and Administrative Medicine, New York, 1963.
- Wennberg, John, Benjamin Barnes and Michael Zubkoff, "Professional Uncertainty and the Problem of Supplier-Induced Demand," *Social Science and Medicine*, forthcoming.
- Wennberg, John, John Bunker and Benjamin Barnes, "The Need for Assessing the Outcome of Common Medical Practices," *Annual Review of Public Health*, Vol. 1, 1980, pp. 277-295.
- Wennberg, John, and Alan Gittelsohn, "Health Care Delivery in Maine I: Patterns of Use of Common Surgical Procedures." *Journal of the Maine Medical Association*. Vol. 66, No. 5, pp. 123-130, 149, May, 1975.
- USDHHS, Health Care Financing Administration, *Professional Standards Review Organization 1979 Program Evaluation*, USDHHS, Health Care Financing Administration, HCFA Pub. No. 03041, 1980.
- Zimmer, James G., "Length of Stay and Hospital Bed Misutilization." *Medical Care*. Vol. 12, No. 5, May, 1974 pp. 453-462.