

Projections of health care spending to 1990

by Ross H. Arnett, III, David R. McKusick, Sally T. Sonnefeld, and Carol S. Cowell

National health expenditures are projected to grow to \$640 billion by 1990, 11.3 percent of the gross national product. Growth in health spending is expected to moderate to an 8.7 percent average annual rate from 1984 to 1990, compared with a 12.6 percent rate from 1978 to 1984. These projections assume lower estimates of overall economic price growth,

lower use of hospital care, and increased use of less expensive types of care. A preliminary analysis of demographic factors reveals that the aging of the population has almost as great an impact as the growth in total population on projected expenditures for many types of health care services.

Introduction

The health care system continues to change in the delivery, utilization, and financing of health care in response to public and private cost-containment efforts. Pressures are being placed on the health industry to minimize costs by moving to less intensive and less expensive modes of care. Added to this is an increased awareness and cost consciousness on the part of the consumer. The impact of these factors is most evident in the inpatient hospital sector where use continues to decline, attributable in part to a shift in services to less costly alternative sites, but also attributable to the elimination of unnecessary services. As competition for the health dollar intensifies, both within and among the various segments of the health care industry, new marketing strategies are appearing (Coddington, Palmquist, and Trollinger, 1985). Prepayment plans which are combinations of providers (frequently hospitals) and payers (frequently insurers), are an example of these strategies. These responses by providers and payers alike are expected to bring down health care expenditure growth.

Another downward pressure affecting health expenditure growth is a projected moderation in economy-wide price increases. However, health expenditures as a percent of gross national product (GNP) will continue to grow. A force likely to put upward pressure on health care spending is the aging of the population. In the future, demographic factors are expected to have an increasing impact on health spending. These and other emerging trends have been incorporated into the projections. The net result of all these effects is a slowing of expenditure growth during the period 1984-90 to an average annual rate of 8.7 percent (Table 1).

Projection scenario

These projections are based on past trends and relationships observed in the historical estimates of national health expenditures (Levit, Lazenby, Waldo et al., 1985). Variation in national health care spending is attributable to many factors, including

economic conditions, sociodemographic changes, and public and private policy shifts. Trend forecasts that reflect average tendencies are used in these projections. The model incorporates economic, actuarial, statistical, demographic, and judgmental factors into a single, integrated framework. It consists of four interrelated components: a five-factor model of expenditure growth, supply variables, a source-of-funds module, and a module for net cost of insurance and program administration costs.

Estimates of health expenditure growth are projected on the basis of the five-factor model. The five factors are population, general price level as measured by the GNP deflator, price relatives that measure the difference between medical service prices and the general inflation rate, units of service consumed per capita, and a residual interpreted as real inputs per unit of service. As a prelude to projecting expenditures to future years, historical expenditures since 1965 are modeled on these five factors, with the residual term accounting for any change not explained by the other four factors. For the projection to future years, predictions of many of the five factors are taken from other forecasters, for example, the economic, population, and manpower assumptions. Other factors such as utilization and the residual are based on analytical judgment, which, in turn, is based in part on historical experience. These components are explained in more detail in the "Projection methodology" section.

Economic assumptions

These projections are based on assumptions in the Board of Trustees: 1985 Annual Report of the Federal Old-Age and Survivors Insurance and Disability Insurance Trust Fund. Under these assumptions, the economy will grow at a constant rate of about 3.0 percent per year throughout the projection period 1984-90 (Table 2).

One of the most important factors explaining growth in national health expenditures is movement in economy-wide price levels as measured by the GNP implicit price deflator. Inflation is expected to recede to a 4.6-percent average annual growth, one-third slower than the rate experienced during the period 1974-84. Expressed in other terms, prices are assumed to increase from their present levels, but at a rate

Reprint requests: M. Carol Pearson, Division of National Cost Estimates, Health Care Financing Administration, L-1 1705 Equitable Building, 6325 Security Boulevard, Baltimore, MD 21207.

Table 1
Highlights of national health expenditures, by type of expenditure: Selected years 1984-90

Type of expenditure	1984	1986	1988	1990	Average annual growth rates	
					1978-84	1984-90
					Amount in billions	
					Percent	
Total health expenditures	\$387	\$454	\$540	\$640	12.8	8.7
Public share	160	187	224	267	13.0	8.9
Private share	227	267	316	372	12.8	8.6
Hospital care	158	181	214	254	13.4	8.2
Community	134	154	184	220	14.9	8.6
Inpatient	114	126	148	174	14.4	7.3
Outpatient	20	28	36	46	18.4	14.5
Physicians' services	75	90	110	132	13.5	9.8
Dentists' services	25	31	37	42	13.0	9.0
Prescription drugs and medical sundries	26	31	37	44	8.9	9.1
Nursing home care	32	39	47	56	14.2	9.8
					Per capita amount	
Total health expenditures	\$1,580	\$1,812	\$2,119	\$2,459	11.7	7.7
					Percent of gross national product	
Total health expenditures	10.6	10.8	10.9	11.3	2.7	1.1

SOURCE: Health Care Financing Administration, Office of the Actuary: Data from the Division of National Cost Estimates.

two-thirds of that experienced from 1974 to 1984. The forecasted deceleration in economy-wide inflation is significant because approximately 60 percent of growth in health care spending can be accounted for by growth in the overall price level (Table 3).

In the short-term, to 1986, the economy's growth rate will slow significantly and inflation will move moderately upward (Table 2). Real GNP, national output after adjusting for price change, is projected to slow to a 3.0 percent rate of growth. In 1984, real GNP exhibited its strongest performance since 1951, reaching almost a 7.0 percent rate of growth. The projected deceleration of real GNP by 1986 implies a contraction in the economy's ability to finance increases for all types of goods and services, including health care. Although real growth is predicted to slow dramatically, inflation is expected to increase, but at less than one-half of 1 percent faster than the rate of 3.8 percent for 1982-84.

For the period 1986-88, current dollar GNP is projected to increase at an average annual rate of 8.3 percent. Real GNP growth is predicted to stabilize at an average annual growth rate of 3.0 percent, and inflation to increase modestly to 5.2 percent. For the last years of the projection, 1988 to 1990, growth in GNP, real GNP, and inflation are all forecasted to slow to average annual rates of growth of 7.2, 2.7, and 4.4 percents, respectively.

Population assumptions

Shifts in the composition of the population have been associated with faster growth in health care expenditures. In 1965, 9.3 percent of the Nation's population was 65 years of age or over (Wade, 1985). By 1984, that age group accounted for 11.6 percent of the population, having an annual growth of more

than twice that of the population overall, 2.2 percent compared with 1.0 percent. During the same period, the cohorts of persons 75 years of age or over grew at an average annual rate of 2.8 percent. As discussed in more detail in the "Demographics" section, the aging of the population was accompanied by higher use of health services contributing to rapid health expenditure growth.

In the future, the number of persons 75 years of age or over is projected to continue to grow at 3.0 percent annually, compared to less than 0.9 percent for the overall population and less than 0.7 percent for the population under age 65. The portion of the population 65 years of age or over will rise from 11.6 percent in 1984 to 12.6 in 1990. Those 75 years of age or over are predicted to move from a 1984-level of 4.8 percent to 5.4 percent in 1990. The continued shifts in the age composition assumed in these projections will tend to put upward pressure on health expenditure growth for the remainder of the eighties because of the disproportionate use of health care by the elderly (Fisher, 1980; Waldo and Lazenby, 1984).

Health professional assumptions

The number of active physicians is projected to grow from approximately 506,000 in 1984 to 588,000 in 1990, an annual average increase of 2.5 percent, or almost three times the growth in population for the same period (Table 4). The number of active dentists is projected to increase from almost 138,000 in 1984 to more than 150,000 in 1990, a growth rate almost twice that of population growth. All other factors being equal, the increased number of physicians and dentists per capita will tend to cause an increase in use of health services and thus an increase in health expenditures. Price competition may offset some of the potential increases.

Table 2
Historical estimates and projections of gross national product, inflation, and population: Selected years 1950-90

Calendar year	Gross national product (GNP)			Consumer Price ^{1,2} Index (CPI)—all items wage earners (1967 = 100.0)	Total ³ population in thousands July 1
	Current dollars in billions	1972 dollars in billions	Implicit price deflator (1972 = 100.0)		
Historical estimates					
1950	\$286.5	\$534.8	53.5	72.1	157,313
1955	400.1	657.5	60.8	80.3	174,028
1960	506.5	737.2	68.7	88.6	188,943
1965	691.0	929.3	74.4	94.4	203,032
1970	992.7	1,085.6	91.4	116.3	214,034
1974	1,434.2	1,246.3	115.1	147.8	222,435
1975	1,549.2	1,231.7	125.7	161.3	224,484
1978	2,163.8	1,438.5	150.4	195.3	230,835
1980	2,631.7	1,475.0	178.4	246.9	235,885
1981	2,957.8	1,512.2	195.6	272.2	238,299
1982	3,069.2	1,480.0	207.4	288.5	240,743
1983	3,304.8	1,534.7	215.3	297.3	243,066
1984	3,662.8	1,639.3	223.4	307.6	245,226
Projections					
1986	4,207.8	1,737.6	242.2	334.6	249,624
1988	4,934.8	1,842.8	267.8	370.0	253,997
1990	5,671.8	1,943.2	291.9	403.3	258,277
Average annual percent change					
Selected periods					
1950-55	6.9	4.2	2.6	2.2	2.0
1955-60	4.8	2.3	2.5	2.0	1.7
1960-65	6.4	4.7	1.6	1.3	1.4
1965-70	7.5	3.2	4.2	4.3	1.1
1970-75	9.3	2.6	6.6	6.8	1.0
1975-80	11.2	3.7	7.3	8.9	1.0
1980-85	8.2	2.8	5.3	5.3	1.0
1985-90	7.7	2.8	4.8	4.8	0.9
1974-84	9.8	2.8	6.9	7.6	1.0
1978-84	9.2	2.2	6.8	7.9	1.0
1984-88	7.7	3.0	4.6	4.7	0.9
1984-90	7.6	2.9	4.6	4.6	0.9
1982-84	9.2	5.2	3.8	3.2	0.9
1984-86	7.2	3.0	4.1	4.3	0.9
1986-88	8.3	3.0	5.2	5.2	0.9
1988-90	7.2	2.7	4.4	4.4	0.8

¹Historical estimates are reported in the *Economic Report of the President*, (1985). Projection growth rates are from Board of Trustees, Federal Old-Age and Survivors Insurance and Disability Insurance Trust Fund, Mar. 1985. II-B assumptions were used. The average annual rate of growth in GNP for 1984-90 used in this projection is within 0.3 percentage points of the rate used by the private consulting firm of Data Resources, Inc.: *U.S. Long-Term Review*. Lexington, Mass., Fall 1985.

²The CPI is shown for comparison only. The implicit price deflator for GNP is used in the projection process to reflect cost pressures external to health care industry.

³Historical estimates and projections of population are from Wade (1985). Alternative II (intermediate) assumptions for population growth were used.

SOURCE: Health Care Financing Administration, Office of the Actuary: Data from the Division of National Cost Estimates.

Table 3
Factors accounting for growth in expenditures in selected categories of national health expenditures: 1974-84¹

Factor	Community hospital care ²			Physicians' services	Dentists' services	Nursing home care excluding ICFMR	Total personal health care	Total national health expenditures
	Inpatient expenses		Outpatient expenses					
	Inpatient days	Admissions						
	Percent distribution							
Total	100.0	100.0	100.0	100.0	100.0	100.0	100.0	100.0
Economy-wide factors								
General inflation (GNP deflator)	51.2	51.5	40.8	52.8	54.8	53.2	55.2	55.6
Aggregate population growth	7.3	7.5	5.8	7.5	7.8	7.6	7.9	7.9
Health-sector specific factors								
Growth in per capita visits or patient days	-8.5	-8	10.9	-7.5	4.2	15.0	—	—
Growth in real services per visit or per day (intensity)	33.4	25.4	29.3	27.5	22.1	15.4	³ 21.3	³ 22.9
Medical care price increases in excess of general price inflation	16.6	16.4	13.2	19.7	11.1	8.8	15.6	13.6

¹For derivation of the method used to allocate factors, see "Projection methodology" section.

²Community hospital expenses are split into inpatient and outpatient expenses using the American Hospital Association procedure.

³Because of data limitations, this is growth in real services per capita.

NOTES: ICFMR is intermediate care facility for the mentally retarded. GNP is gross national product.

SOURCE: Health Care Financing Administration, Office of the Actuary: Data from the Division of National Cost Estimates.

Table 4
Historical estimates and projections of active physicians
and dentists as of December 31: Selected years 1950-90

Year	Number of active physicians			Number of active dentists
	Total	M.D.'s ¹	D.O.'s ²	
Historical estimates				
1950	219,900	209,000	10,900	79,190
1955	240,200	228,600	11,600	84,370
1960	259,400	247,300	12,200	90,120
1965	288,700	277,600	² 11,100	95,990
1970	326,500	314,200	12,300	102,220
1974	369,900	356,200	13,700	110,400
1975	384,400	370,400	14,000	112,450
1978	424,000	408,300	15,700	120,620
1980	457,500	440,400	17,100	126,240
1981	466,700	448,700	18,000	129,180
1982	479,900	461,200	18,700	132,010
1983	492,900	473,200	19,700	135,120
1984	506,500	485,700	20,800	137,950
Projections				
1986	534,800	511,600	23,200	143,320
1988	562,000	536,300	25,700	147,410
1990	587,700	559,500	28,200	150,760
Average annual percent change				
Selected periods				
1950-55	1.8	1.8	1.3	1.3
1955-60	1.6	1.6	1.0	1.3
1960-65	2.2	2.3	³ - 1.9	1.3
1965-70	2.5	2.5	2.1	1.3
1970-75	3.3	3.3	2.6	1.9
1975-80	3.5	3.5	4.1	2.3
1980-85	2.6	2.8	5.1	2.2
1985-90	2.5	2.5	5.2	1.4
1984-86	2.8	2.6	5.6	1.9
1986-88	2.5	2.4	5.3	1.4
1988-90	2.3	2.1	4.8	1.1
1984-88	2.6	2.5	5.4	1.7
1965-84	3.0	3.0	3.4	1.9
1974-84	3.2	3.1	4.3	2.3
1984-90	2.5	2.4	5.2	1.5

¹ Medical doctors.

² Doctors of osteopathy.

³ The decline in the number of active D.O.'s from 1960 to 1965 reflects the granting of approximately 2,400 M.D. degrees to osteopathic physicians who had graduated from the University of California College of Medicine at Irvine. These physicians are included with active M.D.'s beginning in 1962.

SOURCES: Health Care Financing Administration, Office of the Actuary: Data from the Division of National Cost Estimates; (Bureau of Health Professions 1985).

Overview

Outlays for national health expenditures are expected to increase at significantly slower rates from 1984 to 1990 than in the past, both absolutely and in relation to GNP (Table 5). Total spending is projected to increase at an 8.7-percent average annual rate, or at two-thirds of the 12.6 percent rate from 1978 to 1984.

The four factors accounting for historical growth are economy-wide inflation (56 percent), growth in real services expense per use (23 percent), medical care price increases in excess of overall inflation (13 percent), and population growth (8 percent), (Table 3). The projected decline in general inflation and the likely subsequent impact on health sector specific prices, along with continued restrained growth in

government financing and private sector cost-containment efforts should exert substantial downward pressure on health spending for the remainder of the eighties. However, the aging of the population and continued introduction of health-enhancing technologies should cause upward pressure on health spending. The net effect of these pressures and constraints should result in a deceleration in the growth of health spending, especially when one considers that the two price measures alone account for about 70 percent of the growth, and both are predicted to slow in the projection period.

Over the projection period, the ratio of health spending to GNP is projected to increase at an average annual rate of 1.1 percent, or only one-third of that for the period 1978-84. In the short-term, as the economy continues to expand, and the effects of both current law reimbursement reform (for example,

Table 5

**National health expenditures and average annual percent change, by source of funds and percent of gross national product (GNP):
Selected calendar years 1950-90**

Calendar year	Gross national product in billions	Total national health expenditures		Private		Public						
		Amount in billions	Per capita	Percent of GNP	Amount in billions	Percent of total	Total		Federal		State and local	
							Amount in billions	Percent of total	Amount in billions	Percent of total	Amount in billions	Percent of total
Historical estimates												
1950	\$286.5	\$12.7	\$82	4.4	\$9.2	72.8	\$3.4	27.2	\$1.6	12.8	\$1.8	14.4
1955	400.1	17.7	105	4.4	13.2	74.3	4.6	25.7	2.0	11.3	2.6	14.4
1960	506.5	26.9	146	5.3	20.3	75.3	6.6	24.7	3.0	11.2	3.6	13.5
1965	691.0	41.9	207	6.1	30.9	73.8	11.0	26.2	5.5	13.2	5.5	13.0
1970	992.7	75.0	350	7.6	47.2	63.0	27.8	37.0	17.7	23.6	10.1	13.5
1974	1,434.2	116.1	522	8.1	69.1	59.5	47.0	40.5	30.4	26.2	16.6	14.3
1975	1,549.2	132.7	591	8.6	76.4	57.5	56.3	42.5	37.0	27.9	19.3	14.5
1978	2,163.8	189.7	822	8.8	110.1	58.0	79.6	42.0	53.8	28.4	25.8	13.6
1980	2,631.7	247.5	1,049	9.4	142.2	57.4	105.3	42.6	71.0	28.7	34.3	13.9
1981	2,957.8	285.2	1,197	9.6	164.2	57.6	121.1	42.4	83.4	29.2	37.7	13.2
1982	3,069.2	321.2	1,334	10.5	186.1	57.9	135.1	42.1	93.2	29.0	41.9	13.0
1983	3,304.8	355.1	1,461	10.7	207.0	58.3	148.1	41.7	102.7	28.9	45.4	12.8
1984	3,662.8	387.4	1,580	10.6	227.1	58.6	160.3	41.4	111.9	28.9	48.3	12.5
Projections												
1986	4,207.8	454.2	1,820	10.8	266.9	58.8	187.3	41.2	132.1	29.1	55.2	12.2
1988	4,934.8	539.9	2,126	10.9	316.0	58.5	223.8	41.5	159.7	29.6	64.1	11.9
1990	5,671.8	639.6	2,476	11.3	372.4	58.2	267.2	41.8	193.4	30.2	73.8	11.5
Average annual percent change												
Selected periods												
1950-55	6.9	6.9	5.2	—	7.4	—	5.8	—	4.6	—	7.6	—
1955-60	4.8	8.7	6.8	—	9.0	—	7.8	—	8.5	—	6.7	—
1960-65	6.4	9.2	7.6	—	8.8	—	10.2	—	12.9	—	7.6	—
1965-70	7.5	12.3	11.2	—	8.8	—	20.4	—	26.1	—	13.1	—
1970-75	9.3	12.1	11.0	—	10.1	—	15.2	—	16.0	—	13.8	—
1975-80	11.2	13.3	12.2	—	13.2	—	13.3	—	13.9	—	12.2	—
1980-85	8.2	11.0	10.0	—	11.4	—	10.6	—	11.6	—	8.5	—
1985-90	7.7	8.9	8.0	—	8.9	—	8.9	—	9.5	—	7.5	—
1978-84	9.2	12.6	11.5	—	12.8	—	12.4	—	13.0	—	11.0	—
1984-88	7.7	8.7	7.7	—	8.6	—	8.7	—	9.3	—	7.3	—
1984-86	7.2	8.3	7.3	—	8.4	—	8.1	—	8.6	—	6.9	—
1986-88	8.3	9.0	8.1	—	8.8	—	9.3	—	9.9	—	7.8	—
1988-90	7.2	8.8	7.9	—	8.5	—	9.3	—	10.1	—	7.3	—
1965-84	9.2	12.4	11.3	—	11.1	—	15.1	—	17.1	—	12.2	—
1974-84	9.8	12.8	11.7	—	12.6	—	13.0	—	13.9	—	11.3	—
1984-90	7.6	8.7	7.8	—	8.6	—	8.9	—	9.5	—	7.3	—

SOURCE: Health Care Financing Administration, Office of the Actuary: Data from the Division of National Cost Estimates; (Levit et al. 1985.)

the Medicare prospective payment system) and the strong private sector initiatives continue to contain costs, the health care sector's share of GNP should remain fairly stable, increasing slowly from 10.6 percent in 1984 to 10.8 in 1986. A gradual increase in this share is projected for the remainder of the eighties, reaching 11.3 percent in 1990. This proportion can be expected to be higher if the assumption for a relatively strong real GNP growth does not materialize.

During the period 1978 to 1984, current dollar or nominal GNP increased at a 9.2 percent average annual rate, and national health expenditures increased at a 12.6 percent rate (Table 5). This rapid growth in health care spending relative to the Nation's ability to pay for it was a factor that prompted Congress, States, and private industry to develop cost-containment initiatives. Health care markets and institutions are adjusting to these new incentives and constraints, and a new health care environment is emerging. Thus, for the projection period, GNP is predicted to grow at a 7.6 percent average annual rate, and health spending is projected to grow at an 8.7 percent rate. This reflects a narrowing of the differential between growth in health care costs and growth in the overall economy.

Shifts from the historical trend in relative shares of spending going to the various types of health services are occurring (Table 6). They reflect changes in the health care delivery system. The hospital share of personal health care expenditures, which historically had been increasing, decreased from 47.3 percent in 1982 to 46.2 percent in 1984. The hospital share is projected to continue to decline slowly to a 44.4-percent share of the health dollar by 1990. Reforms in the payment systems for hospital care and increasing competition from ambulatory services will result in the deceleration of spending growth for hospital care relative to other services. The reduced demand for inpatient services will be partially offset by increases in both the physician and nursing home shares.

Government financing

The Federal share of total health expenditures has grown slowly but continuously from 23.2 percent in 1967, the first full year of Medicare and Medicaid, to 29.2 percent in 1981, then declined slightly to 28.9 percent in 1984 (Table 5). Medicare's share, the largest single component of Federal health care spending, grew continuously from 1968 to 1984, except for the period of wage and price controls in the early 1970's. Federal Medicaid spending has declined as a share of the total of Federal spending since about 1980, partly because of budget constraints. Other Federal spending, consisting mostly of Federal hospitals, has declined as a share of the total for the last two decades. Continued modest declines in Federal Medicaid and other Federal spending are projected through 1990. Total Federal Medicare costs are projected to be almost \$119 billion in 1990

(Table 7); Federal Medicaid costs for 1990 will be nearly \$34 billion (Table 8).¹

Medicare is projected to grow as a fraction of all health care spending largely because the Medicare population is growing faster than the population as a whole, and because longevity is increasing in the Medicare population. A temporary moderation in the rise should occur in 1986 as a result of the freeze on the payments for diagnosis-related groups under part A of Medicare. In this projection scenario, Federal payments for health will rise from almost \$112 billion in 1984, just under 13 percent of total Federal budget, to more than \$193 billion in 1990, almost 15 percent of the Federal budget.

State and local governments have funded about 13 percent of total health care for the last two decades. A modest decline in the State and local share over the past 4 years is projected to continue through the projection period, resulting in State and local governments paying for 11.5 percent of health care costs.

Private financing

After years of steady decline, the portion of health care financed by the private sector seems to have stabilized at just under 60 percent (Table 5). Prior to the Medicare and Medicaid programs, the private sector financed three-quarters of national health expenditures. Also stabilizing are the components of private financing: patient direct payments, private insurance, and other private payments (philanthropy and industrial inplant health facilities). At first glance, this stability is somewhat surprising in what otherwise might be characterized as a rather tumultuous time in the health care industry. However, the number of persons with private insurance has been reasonably constant for several years, especially for the big expenditure items such as hospital care and physicians' services. Even the movement in the late 1970's to insure for dental and vision care has waned. The cost-containment effort leading to increases in deductibles and coinsurance seems to have had some impact on use of services, but does not seem to have had much net effect on the proportion of health expenditures financed by patient direct payments.

New forms of insurance arrangements have been developed recently, in part as a response to the competitive pressures of cost containment. Health maintenance organizations are a long-standing example of a provider/insurance arrangement. New versions of this type of organization have grown out of the preferred provider movement. Preferred provider organizations (PPO's) are basically a discount system which, in principle, benefits both the purchaser and the provider, one receiving lower cost health services and the other increasing its potential

¹These projections of Medicare spending do not take into account potential impacts from the Gramm-Rudman-Hollings legislation.

Table 6
Percent distribution of personal health care costs, by type of service: Selected years 1950-90

Calendar year	Type of personal health care expenditure								
	Total	Hospital care	Physicians' services	Dentists' services	Other professional services	Drugs and medical sundries	Eyeglasses and appliances	Nursing home care	Other health services
Percent distribution									
Historical estimates									
1950	100.0	35.4	25.2	8.8	3.6	15.9	4.5	1.7	4.8
1960	100.0	38.4	24.0	8.3	3.6	15.4	3.3	2.2	4.7
1965	100.0	39.0	23.6	7.8	2.9	14.4	3.3	5.8	3.2
1970	100.0	42.8	21.9	7.3	2.4	12.2	3.0	7.2	3.2
1975	100.0	44.8	21.3	7.0	2.2	10.2	2.7	8.6	3.2
1980	100.0	46.2	21.4	7.0	2.6	8.5	2.3	9.3	2.7
1982	100.0	47.3	21.7	6.8	2.5	7.7	2.0	9.4	2.7
1984	100.0	46.2	22.1	7.3	2.6	7.6	2.2	9.4	2.8
Projections									
1986	100.0	44.9	22.5	7.6	2.7	7.7	2.2	9.7	2.8
1988	100.0	44.4	22.8	7.6	2.8	7.7	2.1	9.8	2.9
1990	100.0	44.4	23.1	7.3	2.8	7.6	2.1	9.8	2.9

SOURCE: Health Care Financing Administration, Office of the Actuary: Data from the Division of National Cost Estimates.

Table 7

Medicare benefit payments, by type of service and administrative expenses: Selected years 1970-90¹

Calendar year	Medicare benefits and administrative expenses	Benefits							Administrative expenses
		Total	Hospital care	Physicians' services	Other professional services ²	Eyeglasses and appliances	Nursing home care	Other personal health care	
Amount in billions									
Historical estimates³									
1970	\$7.5	\$7.1	\$5.1	\$1.6	\$0.1	(⁵)	\$0.3	(⁵)	\$0.4
1974	13.1	12.4	9.2	2.7	0.1	\$0.1	0.2	\$0.1	0.7
1975	16.3	15.6	11.5	3.4	0.2	0.1	0.3	0.1	0.7
1978	25.9	24.9	18.2	5.4	0.4	0.2	0.3	0.3	1.0
1980	36.8	35.7	25.9	7.9	0.7	0.4	0.4	0.5	1.1
1981	44.7	43.5	31.4	9.7	0.8	0.5	0.4	0.6	1.3
1982	52.4	51.1	36.8	11.4	1.1	0.6	0.5	0.7	1.3
1983	58.8	57.4	40.5	13.4	1.4	0.8	0.5	0.8	1.4
1984	64.6	63.1	44.4	14.6	1.7	1.0	0.6	0.9	1.6
Projections⁴									
1986	77.5	75.7	51.9	18.7	2.1	1.3	0.7	1.0	1.8
1988	95.8	93.6	64.4	22.9	2.6	1.6	0.8	1.2	2.1
1990	118.6	116.2	79.6	29.0	3.2	2.0	0.9	1.5	2.5
Average annual percent change									
Selected periods									
1974-84	17.3	17.6	17.0	18.5	29.1	27.0	8.6	27.9	8.7
1978-84	16.4	16.7	16.0	17.8	25.3	27.1	8.4	17.5	8.0
1984-86	9.5	9.6	8.1	13.2	12.6	15.6	9.0	8.8	8.4
1984-88	10.3	10.4	9.7	12.0	11.9	14.5	9.1	8.9	8.0
1984-90	10.7	10.7	10.2	12.1	11.6	13.4	9.0	8.6	7.7

¹Service categories used in this table differ from those used in the annual reports of the Board of Trustees of the Federal Hospital Insurance and Supplementary Medical Insurance Trust Funds. For example, hospital-based home health services appear as hospital care rather than as home health services (which are included in other professional services).

²Hospice benefits are included with other professional services. The benefit provision was effective November 1, 1983, and expires October 1, 1986.

³Historical data are from Levit et al. (1985).

⁴Projections are derived from Board of Trustees, Federal Hospital Insurance and Supplementary Medical Insurance Trust Fund, Mar. 1985.

⁵Less than \$50 million.

SOURCE: Health Care Financing Administration, Office of the Actuary: Data from the Division of National Cost Estimates.

Table 8
Federal share of Medicaid benefits,
administrative expenses, and average annual
percent change: Selected years 1970-90

Calendar year	Total	Benefits	Administrative expenses
Amount in billions			
Historical estimates¹			
1970	\$3.0	\$2.9	\$0.1
1974	6.4	6.1	0.3
1975	7.9	7.6	0.4
1978	11.2	10.4	0.7
1980	14.5	13.6	0.8
1981	17.3	16.2	1.1
1982	18.0	17.0	1.0
1983	19.3	18.3	1.1
1984	20.9	19.7	1.2
Projections			
1986	24.4	23.0	1.4
1988	28.5	27.0	1.5
1990	33.7	32.0	1.6
Average annual percent change			
1974-84	12.6	12.4	15.4
1978-84	11.0	11.2	8.7
1984-86	8.0	8.0	8.5
1984-88	8.1	8.2	6.4
1984-90	8.3	8.5	5.6

¹Historical Medicaid financial data on outlays reflect changes in services incurred and cash flow adjustments (Levit et al., 1985).

SOURCE: Health Care Financing Administration, Office of the Actuary: Data from the Division of National Cost Estimates.

market share. Some of the arrangements have now added an element of prepayment. A growing number of these PPO's are assuming the insurance risk by providing care in return for a set prepaid amount. Examples of this form are Humana's Care Plus and the Managed Premium Preferred Provider Organization (MPPPO), Partners, set up by the Voluntary Hospitals of America and Aetna (Cassak, 1985).

Projections by type of service

Presented here is a discussion of national health expenditures by type of expenditure and sources of payment. Data are presented showing both expenditure and payment levels and the distribution of payment sources (Tables 9 and 10).

Hospital care

Hospital care accounts for more than 46 percent of personal health care spending and, thus, during the recent period of rapidly rising health care costs, has been the focus of much national attention. Both the public and private sectors have instituted extensive cost-containment programs. The public initiatives such as the Medicare prospective payment system (PPS), and an increased emphasis on peer review organizations are well known. The private sector has developed a variety of approaches to control costs, such as second opinions, increased deductibles and

coinsurance, preferred provider organizations, health maintenance organizations (HMO's), coordination of benefits, and utilization review and audit of provider bills. An examination of recent hospital data reveals that the efforts of both sectors seem to have had the desired effect on costs.

Total hospital expenditures are projected to grow from their 1984 level of \$158 billion to almost \$254 billion in 1990 (Table 11). Hospital expenditures during the period 1984-90 are projected to grow at an 8.2 percent rate, compared with a 12.9 percent rate during the period 1978-84 (Table 12). The slowest growth, 7.0 percent, occurs during the period 1984-86, a time of significant declines in utilization.

Community hospital inpatient

Expenditures for community hospital inpatient services are projected to increase from \$114 billion in 1984 to more than \$174 billion in 1990. This reflects an average annual rate of growth of 7.3 percent, down from the 14.4 percent growth rate during the period 1978-84. Community hospital costs per day and stay are projected to increase from 1984 levels of \$443 and \$2,947, respectively to \$747 and \$4,781 in 1990. These estimates also represent a decrease in the overall growth rate compared with the period 1978-84. To some extent, these declines are offset by increases in outpatient care and care in nonhospital settings. However, to a large degree, the hospital reductions seem to represent reductions in overall health care spending.

Preliminary data for 1985 suggest that hospital admissions will decline about 5.5 percent and total days by about 7.5 percent. The comparable decreases for 1984 were 3.7 and 8.7 percent for admissions and days, respectively. Because the number of days dropped faster than did admissions, the average length of stay declined. At some point, one would expect this drop in length of stay to stabilize or even reverse, because the patients admitted will be sicker, on average, than those admitted prior to cost-containment efforts (Barkholz, 1985).

The decline in admissions may be attributed to several factors. Cost-containment efforts such as second opinions and new nonsurgical treatment modalities are having an impact, but there are also reports of new consumer awareness and concern. Many consumers are demanding outpatient treatment when possible. To some extent, this phenomenon may be in response to employer incentives such as increased deductibles and coinsurance, but there also seems to be a new consumer inclination to question the health care they are receiving and a desire to try less invasive and less expensive alternatives before entering the hospital (Goldsmith, 1984).

Most industry analysts still express uncertainty as to how long the hospital inpatient declines will continue (Davis, Anderson, Renn, et al., 1985). Many predict that we are at or near the bottom of the declines, and that forces such as the aging of the population and limits as to how much more cost containment efforts

Table 9
National health expenditures, by type of expenditure and source of funds: Selected years 1974-90

Type of expenditure	Private						Public		
	Total	Consumer			Total	Federal	State and local		
	Total	Total	Total	Patient direct	Health insurance	Other	Total	Federal	State and local
	Amount in billions								
1974 Total	\$116.1	\$69.1	\$64.0	\$36.2	\$27.9	\$5.0	\$47.0	\$30.4	\$16.6
Health services and supplies	108.6	65.8	64.0	36.2	27.9	1.7	42.9	27.8	15.1
Personal health care	101.3	62.8	61.3	36.2	25.1	1.5	38.5	25.7	12.8
Hospital care	45.0	20.6	20.0	4.9	15.1	0.6	24.4	16.7	7.7
Physicians' services	21.2	15.9	15.9	7.7	8.1	(³)	5.4	3.8	1.6
Dentists' services	7.4	7.0	7.0	6.3	0.6	—	.4	.2	.2
Other professional services	2.2	1.8	1.8	1.4	.4	(³)	.4	.2	.1
Drugs and medical sundries	11.0	10.1	10.1	9.5	.6	—	.9	.4	.4
Eyeglasses and appliances	2.8	2.6	2.6	2.5	.1	—	.2	.1	(³)
Nursing home care	8.5	3.9	3.9	3.8	.1	.1	4.6	2.6	2.0
Other health services	3.1	.8	—	—	—	.8	2.3	1.6	.7
Program administration and net cost of insurance	4.7	3.0	2.8	—	2.8	.2	1.7	1.0	.6
Government public health activities	2.7	—	—	—	—	—	2.7	1.1	1.7
Research and construction of medical facilities	7.5	3.3	—	—	—	3.3	4.2	2.6	1.6
Research ²	2.8	.3	—	—	—	.3	2.5	2.3	.3
Construction	4.7	3.1	—	—	—	3.1	1.6	.3	1.3
1984 Total	387.4	227.1	215.9	95.4	120.5	11.2	160.3	111.9	48.3
Health services and supplies	371.6	220.3	215.9	95.4	120.5	4.4	151.2	105.4	45.9
Personal health care	341.8	206.5	202.5	95.4	107.2	3.9	135.4	101.1	34.8
Hospital care	157.9	73.5	71.9	13.7	58.2	1.6	84.3	65.6	18.7
Physicians' services	75.4	54.5	54.4	21.0	33.5	(³)	20.9	16.9	4.0
Dentists' services	25.1	24.5	24.5	16.3	8.3	—	.5	.3	.3
Other professional services	8.8	6.0	5.9	3.5	2.4	.1	2.8	2.2	.6
Drugs and medical sundries	25.8	23.5	23.5	19.7	3.8	—	2.4	1.2	1.2
Eyeglasses and appliances	7.4	6.3	6.3	5.5	.8	—	1.2	1.1	.1
Nursing home care	32.0	16.3	16.1	15.8	.3	.2	15.7	8.8	6.9
Other health services	9.4	2.0	—	—	—	2.0	7.5	5.1	2.4
Program administration and net cost of insurance	19.1	13.9	13.4	—	13.4	.5	5.2	2.9	2.3
Government public health activities	10.7	—	—	—	—	—	10.7	1.4	9.3
Research and construction of medical facilities	15.8	6.7	—	—	—	6.7	9.0	6.6	2.5
Research ²	6.8	.4	—	—	—	.4	6.4	5.8	.6
Construction	9.0	6.4	—	—	—	6.4	2.6	.7	1.9

See footnotes at end of table.

Table 9—Continued

National health expenditures, by type of expenditure and source of funds: Selected years 1974-90

Type of expenditure	Private						Public		
	Total	Total	Total	Patient direct	Health insurance	Other	Total	Federal	State and local
	Amount in billions								
1986 Total	\$454.2	\$266.9	\$254.8	\$112.9	\$141.9	\$12.1	\$187.3	\$132.1	\$55.2
Health services and supplies	437.2	260.0	254.8	112.9	141.9	5.1	177.2	124.5	52.7
Personal health care	402.9	244.1	239.5	112.9	126.6	4.6	158.8	119.6	39.2
Hospital care	180.8	84.4	82.5	15.7	66.8	1.9	96.4	75.7	20.6
Physicians' services	90.5	64.4	64.4	24.4	40.0	(^a)	26.0	21.4	4.6
Dentists' services	30.7	30.1	30.1	19.8	10.2	—	.6	.3	.3
Other professional services	10.9	7.3	7.2	4.1	3.1	.1	3.6	2.8	.8
Drugs and medical sundries	31.0	28.1	28.1	23.2	4.9	—	2.9	1.5	1.4
Eyeglasses and appliances	8.8	7.2	7.2	6.2	1.0	—	1.6	1.4	.1
Nursing home care	38.9	20.3	20.0	19.5	.5	.3	18.6	10.4	8.2
Other health services	11.4	2.3	—	—	—	2.3	9.1	6.1	3.0
Program administration and net cost of insurance	21.9	15.9	15.3	—	15.3	.6	6.0	3.4	2.6
Government public health activities	12.3	—	—	—	—	—	12.3	1.5	10.9
Research and construction of medical facilities	17.0	6.9	—	—	—	6.9	10.1	7.6	2.5
Research	7.8	.4	—	—	—	.4	7.4	6.7	.7
Construction	9.2	6.5	—	—	—	6.5	2.7	.9	1.8
1988 Total	539.9	316.0	302.4	133.9	168.4	13.7	223.8	159.7	64.1
Health services and supplies	520.8	308.4	302.4	133.9	168.4	6.0	212.4	151.1	61.3
Personal health care	481.3	290.4	285.0	133.9	151.1	5.3	191.0	145.6	45.3
Hospital care	213.7	98.1	95.9	17.5	78.4	2.2	115.6	92.4	23.1
Physicians' services	109.8	78.1	78.0	29.8	48.3	.1	31.7	26.1	5.6
Dentists' services	36.5	35.8	35.8	23.5	12.3	—	.7	.3	.3
Other professional services	13.3	8.8	8.7	4.8	3.9	.1	4.5	3.5	1.0
Drugs and medical sundries	37.1	33.8	33.8	27.6	6.2	—	3.3	1.7	1.6
Eyeglasses and appliances	10.3	8.3	8.3	7.1	1.2	—	2.0	1.8	.2
Nursing home care	47.0	24.8	24.5	23.7	.8	.3	22.2	12.4	9.8
Other health services	13.7	2.6	—	—	—	2.6	11.1	7.4	3.7
Program administration and net cost of insurance	24.8	18.0	17.3	—	17.3	.7	6.8	3.9	3.0
Government public health activities	14.6	—	—	—	—	—	14.6	1.6	13.0
Research and construction of medical facilities	19.1	7.7	—	—	—	7.7	11.4	8.6	2.8
Research	8.9	.4	—	—	—	.4	8.4	7.6	.8
Construction	10.2	7.2	—	—	—	7.2	3.0	1.0	2.0

See footnotes at end of table.

Table 9—Continued
National health expenditures, by type of expenditure and source of funds: Selected years 1974-90

Type of expenditure	Private						Public			
	Total	Consumer			Total	Federal	State and local			
		Total	Total	Patient direct	Health insurance	Other	Total	Federal	State and local	
		Amount in billions								
1990 Total	\$639.6	\$372.4	\$356.8	\$156.6	\$200.2	\$15.6	\$267.2	\$193.4	\$73.8	
Health services and supplies	618.0	363.6	356.8	156.6	200.2	6.9	254.3	183.6	70.7	
Personal health care	571.3	342.0	335.9	156.6	179.3	6.1	229.4	177.6	51.8	
Hospital care	253.5	116.0	113.4	20.9	92.5	2.6	137.6	112.3	25.2	
Physicians' services	131.8	92.5	92.4	34.7	57.7	.1	39.3	32.7	6.6	
Dentists' services	41.9	41.2	41.2	27.0	14.3	—	.7	.4	.4	
Other professional services	16.0	10.4	10.3	5.5	4.8	.1	5.6	4.3	1.3	
Drugs and medical sundries	43.6	39.9	39.9	32.4	7.5	—	3.7	1.8	1.8	
Eyeglasses and appliances	11.9	9.5	9.5	8.0	1.4	—	2.4	2.2	.2	
Nursing home care	56.3	29.6	29.2	28.1	1.1	.4	26.6	14.8	11.8	
Other health services	16.3	2.8	—	—	—	2.8	13.5	8.9	4.6	
Program administration and net cost of insurance	29.2	21.6	20.8	—	20.8	.8	7.6	4.3	3.2	
Government public health activities	17.4	—	—	—	—	—	17.4	1.7	15.7	
Research and construction of medical facilities	21.6	8.7	—	—	—	8.7	12.9	9.8	3.1	
Research ²	10.1	.5	—	—	—	.5	9.7	8.7	.9	
Construction	11.5	8.2	—	—	—	8.2	3.2	1.0	2.2	

¹ Spending by philanthropic organizations, industrial in-plant health services, and privately financed construction.

² Research and development expenditures of drug companies and other manufacturers and providers of medical equipment and supplies are excluded from "research expenditures," but are included in the expenditure class in which the product falls.

³ Less than \$50 million.

SOURCE: Health Care Financing Administration, Office of the Actuary: Data from the Division of National Cost Estimates.

Table 10

Percent distribution of national health expenditures, by source of funds and type of expenditure: Selected years 1965-90

Type of expenditure and year	Total	Private			Public			
		Total	Patient direct	Health insurance	Other	Total	Federal	State and local
Hospital care								
Historical								
1965	100.0	60.1	16.8	41.1	2.2	39.9	17.4	22.5
1970	100.0	47.6	11.4	34.6	1.6	52.5	34.1	18.4
1975	100.0	44.9	7.9	35.9	1.1	55.1	38.4	16.7
1980	100.0	46.5	7.4	38.1	1.0	53.6	40.6	13.0
1982	100.0	47.2	7.6	38.5	1.0	52.8	41.1	11.7
1984	100.0	46.6	8.7	36.9	1.0	53.5	41.6	11.9
Projected								
1986	100.0	46.7	8.7	37.0	1.0	53.3	41.9	11.4
1988	100.0	45.9	8.2	36.7	1.0	54.1	43.3	10.8
1990	100.0	45.7	8.2	36.5	1.0	54.2	44.3	9.9
Physicians' services								
Historical								
1965	100.0	93.1	61.6	31.4	.1	6.9	1.8	5.1
1970	100.0	79.1	45.4	33.6	.1	20.9	14.9	6.0
1975	100.0	73.7	34.1	39.5	.1	26.4	18.8	7.6
1980	100.0	73.1	30.5	42.5	.1	26.9	20.6	6.3
1982	100.0	72.6	28.7	43.8	.1	27.4	21.7	5.7
1984	100.0	72.2	27.8	44.4	.1	27.7	22.4	5.3
Projected								
1986	100.0	71.2	27.0	44.2	.1	28.7	23.6	5.1
1988	100.0	71.2	27.1	44.0	.1	28.8	23.8	5.1
1990	100.0	70.2	26.4	43.8	.1	29.8	24.8	5.0
Dentists' services								
Historical								
1965	100.0	98.3	97.1	1.2	—	1.7	1.1	.6
1970	100.0	95.3	90.2	5.1	—	4.7	2.7	2.0
1975	100.0	94.3	80.5	13.9	—	5.6	3.3	2.3
1980	100.0	96.1	65.6	30.5	—	3.9	2.2	1.7
1982	100.0	97.1	63.5	33.6	—	2.9	1.5	1.4
1984	100.0	97.8	64.8	33.0	—	2.1	1.1	1.0
Projected								
1986	100.0	98.0	64.6	33.4	—	2.0	1.0	1.0
1988	100.0	98.2	64.4	33.8	—	1.8	.9	.9
1990	100.0	98.3	64.3	34.0	—	1.7	.9	.8

See footnotes at end of table.

Table 10—Continued

Percent distribution of national health expenditures, by source of funds and type of expenditure: Selected years 1965-90

Type of expenditure and year	Total	Private				Public		
		Total	Patient direct	Health insurance	Other	Total	Federal	State and local
Drugs and medical sundries								
Historical								
1965	100.0	96.2	93.6	2.6	—	3.8	2.3	1.5
1970	100.0	93.9	90.2	3.8	—	6.1	3.0	3.1
1975	100.0	91.4	84.9	6.5	—	8.6	4.4	4.2
1980	100.0	91.3	79.6	11.7	—	8.7	4.3	4.4
1982	100.0	91.1	77.6	13.5	—	8.9	4.4	4.5
1984	100.0	90.8	76.2	14.6	—	9.2	4.7	4.5
Projected								
1986	100.0	90.7	74.8	15.9	—	9.4	4.8	4.6
1988	100.0	91.2	74.5	16.7	—	8.8	4.5	4.3
1990	100.0	91.6	74.4	17.2	—	8.4	4.2	4.2
Nursing home care								
Historical								
1965	100.0	65.7	64.5	.1	1.0	34.3	22.2	12.1
1970	100.0	51.4	50.3	.4	.7	48.6	28.6	20.0
1975	100.0	44.0	42.7	.7	.6	56.0	31.4	24.6
1980	100.0	45.1	43.6	.9	.6	54.9	29.6	25.3
1982	100.0	47.8	46.2	.9	.7	52.1	28.4	23.7
1984	100.0	51.0	49.4	.8	.7	49.0	27.3	21.7
Projected								
1986	100.0	52.2	50.2	1.2	.7	47.9	26.7	21.2
1988	100.0	52.8	50.4	1.6	.7	47.2	26.3	20.9
1990	100.0	52.7	49.9	2.0	.7	47.4	26.4	21.0

SOURCE: Health Care Financing Administration, Office of the Actuary: Data from the Division of National Cost Estimates.

Table 11
National health expenditures, by type of expenditure: Selected years 1950-90

Type of expenditure	1950	1955	1960	1965	1970	1974	1975	1978	1980	1982	1983	1984	1986	1988	1990
	Amount in billions														
Total	\$12.7	\$17.7	\$26.9	\$41.9	\$75.0	\$116.1	\$132.7	\$189.7	\$247.5	\$321.2	\$355.1	\$387.4	\$454.2	\$539.9	\$639.6
Health services and supplies	11.7	16.9	25.2	38.4	69.6	108.6	124.3	179.9	235.6	307.0	339.8	371.6	437.2	520.8	618.0
Personal health care	10.9	15.7	23.7	35.9	65.4	101.3	117.1	167.4	219.1	284.9	315.2	341.8	402.9	481.3	571.3
Hospital care	3.9	5.9	9.1	14.0	28.0	45.0	52.4	76.2	101.3	134.7	148.8	157.9	180.8	213.7	253.5
Physicians' services	2.7	3.7	5.7	8.5	14.3	21.2	24.9	35.8	46.8	61.8	68.4	75.4	90.5	109.8	131.8
Dentists' services	1.0	1.5	2.0	2.8	4.7	7.4	8.2	11.8	15.4	19.5	21.8	25.1	30.7	36.5	41.9
Other professional services	0.4	0.6	0.9	1.0	1.6	2.2	2.6	4.1	5.6	7.1	8.0	8.8	10.9	13.3	16.0
Drugs and medical sundries	1.7	2.4	3.7	5.2	8.0	11.0	11.9	15.4	18.5	21.8	23.6	25.8	31.0	37.1	43.6
Eyeglasses and appliances	0.5	0.6	0.8	1.2	1.9	2.8	3.2	4.2	5.1	5.6	6.5	7.4	8.8	10.3	1.9
Nursing home care	0.2	0.3	0.5	2.1	4.7	8.5	10.1	15.1	20.4	26.9	29.4	32.0	38.9	47.0	56.3
Other health services	0.5	0.9	1.1	1.1	2.1	3.1	3.8	4.8	5.9	7.6	8.6	9.4	11.4	13.7	16.3
Program administration and net cost of insurance	0.5	0.6	1.1	1.7	2.8	4.7	4.0	7.5	9.2	12.8	14.5	19.1	21.9	24.8	29.2
Government public health activities	0.4	0.4	0.4	0.8	1.4	2.7	3.2	5.0	7.2	9.3	10.1	10.7	12.3	14.6	17.4
Research and construction of medical facilities	1.0	0.9	1.7	3.5	5.4	7.5	8.4	9.7	11.9	14.2	15.3	15.8	17.0	19.1	21.6
Research	0.1	0.2	0.7	1.5	2.0	2.8	3.3	4.4	5.4	5.9	6.2	6.8	7.8	8.9	10.1
Construction	0.8	0.7	1.0	2.0	3.4	4.7	5.1	5.3	6.5	8.3	9.1	9.0	9.2	10.2	11.5

SOURCE: Health Care Financing Administration, Office of the Actuary: Data from the Division of National Cost Estimates.

Table 12

National health expenditures average annual percent change, by type of expenditure: Selected periods 1950-90

Type of expenditure	1950-55	1955-60	1960-65	1965-70	1970-75	1975-80	1980-85	1985-90	1965-84	1974-84	1978-84	1984-90	1984-86	1984-88	1986-88	1988-90
	Average annual percent change															
Total	7.0	8.7	9.2	12.3	12.1	13.3	11.0	8.9	12.4	12.8	12.6	8.7	8.3	8.7	9.0	8.8
Health services and supplies	7.6	8.3	8.7	12.6	12.3	13.7	11.3	9.0	12.7	13.1	12.9	8.8	8.5	8.8	9.1	8.9
Personal health care	7.6	8.6	8.6	12.8	12.4	13.3	11.0	9.1	12.6	12.9	12.6	8.9	8.6	8.9	9.3	9.0
Hospital care	8.9	9.0	9.0	14.9	13.4	14.1	10.6	8.6	13.6	13.4	12.9	8.2	7.0	7.9	8.7	8.9
Physicians' services	6.1	9.0	8.3	11.1	11.7	13.4	11.9	9.9	12.2	13.5	13.2	9.8	9.6	9.8	10.1	9.6
Dentists' services	9.4	5.6	7.3	11.1	11.6	13.3	12.5	8.5	12.2	13.0	13.4	9.0	10.6	9.9	9.1	7.2
Other professional services	7.3	8.9	3.7	9.1	10.4	16.5	11.7	10.4	11.9	14.7	13.4	10.6	11.5	11.1	10.7	9.7
Drugs and medical sundries	6.7	8.9	7.2	9.1	8.3	9.2	8.8	9.0	8.8	8.9	9.0	9.1	9.6	9.4	9.3	8.4
Eyeglasses and appliances	4.2	5.1	8.6	10.7	10.1	10.2	9.5	8.0	10.2	10.3	10.2	8.1	6.5	8.4	8.3	7.5
Nursing home care	10.8	11.0	31.5	17.8	16.4	15.2	11.7	9.7	15.5	14.2	13.4	9.8	10.2	10.0	9.9	9.4
Other health services	11.9	3.7	0.7	12.5	12.8	9.5	11.9	9.4	11.7	11.8	12.1	9.5	9.9	9.8	9.8	8.9
Program administration and net cost of insurance	14.6	6.7	15.1	10.1	7.2	18.3	17.3	7.3	13.4	15.2	16.7	7.4	7.2	6.8	6.4	8.5
Government public health activities	0.9	1.9	14.5	11.8	17.3	19.6	9.6	8.8	14.5	14.6	13.5	8.5	7.6	8.2	8.8	9.2
Research and construction of medical facilities	-2.2	14.7	15.0	9.0	9.2	7.3	6.4	5.8	8.2	7.8	8.3	5.4	3.9	4.9	5.9	6.4
Research	12.4	25.8	18.0	5.4	11.1	10.2	6.2	6.7	8.2	9.3	7.4	6.9	7.1	6.9	6.6	6.9
Construction	-5.0	10.0	13.8	11.4	8.1	5.1	6.7	5.1	8.2	6.7	9.0	4.2	1.4	3.3	5.3	6.0

SOURCE: Health Care Financing Administration, Office of the Actuary: Data from the Division of National Cost Estimates.

can affect the system will cause a turnaround in the inpatient hospital utilization. The approach used in these projections follows this line of thinking. The estimates show a significant reduction in the rate of decline in utilization in 1986 and modest growth after 1988.

Community hospital outpatient

In contrast to the inpatient experience, outpatient care is growing strongly with average annual growth in expenditures from 1984 to 1990 projected to be twice as high as inpatient at 14.5 percent (Jensen and Miklovic, 1985). Growth in outpatient care makes sense in many respects. Some concern has been expressed that under Medicare's PPS, hospitals would admit patients, but shift as many services as possible to an outpatient setting, which is not covered by PPS, thus maximizing income from both settings. One of the factors that allows these shifts is that more technology has been adapted to the outpatient setting. Significant shifts to outpatient surgery have occurred, as well as the performance of many tests and medical workups formerly done on an inpatient basis (Anderson, 1985). In addition, many hospitals are expanding or reemphasizing their outpatient services by extensive marketing. These trends are consistent with government and business initiatives to have more services performed in a less costly setting.

As cost containment shortens stays and eliminates admissions, hospitals are seeking alternative sources of revenue and ways to employ their underutilized resources. Partial year data from the American Hospital Association Panel Survey, 1985 show outpatient visits to be growing at about a 3.7 percent rate in 1985, compared with a 1.6 percent average annual growth rate for the period 1978 to 1984. Many hospitals are aggressively marketing their outpatient services in forms to be competitive with HMO's, surgi-centers, emergi-centers, and the like.

Expenditures for outpatient care are predicted to be almost \$46 billion by 1990, rising by an average annual growth rate of 14.5 percent from the 1984 level of more than \$20 billion. Outpatient visits per capita for the same two periods grew at a 0.6 percent rate from 1978 to 1984, compared with a 2.0 percent rate from 1984 to 1990. Showing an opposite trend in growth rates, prices, after adjusting for overall inflation, dropped from 2.4 percent to 1.6 percent, and intensity per visit dropped from 5.2 percent to 4.7 percent. The net result is that even this strong growth is a decline from earlier periods such as 1978 to 1984 when expenditures grew at a 16.9 percent average annual rate.

Community hospitals maybe losing some business to nonhospital settings such as physicians' offices or surgi-centers and emergi-centers. In an attempt to offset these losses, one of the more recent initiatives in the hospital sector is the alliance between hospitals and insurers. In some cases, hospital chains are purchasing insurance companies, but in most cases major insurers and large hospital groups are uniting

to create new kinds of competitive insurance packages. One example mentioned earlier is the MPPPO venture formed by the Voluntary Hospitals of America and Aetna Insurance Company. These alliances of providers and payers are attempts to lock in a set of clients to guarantee both partners a share of the market. Along these same lines, hospitals are also acquiring and setting up their own HMO's. Again, the attempt is to compete and maintain or increase a share of the market.

Federal hospitals

Federal hospitals spending is projected to experience slower growth than it has in the past, with expenditures rising from a 1984 level of less than \$11 billion to more than \$18 billion in 1990, a 7.9 percent rate of average annual increase. The rate of growth from 1978 to 1984 was 9.4 percent. The slow-down is attributed to Federal budget constraints, lower inflation rates, and Federal hospital closures. Federal hospitals are somewhat isolated from the forces affecting community hospitals because most are paid by appropriation rather than by reimbursement on a patient basis. Thus, they have not experienced as much of a slowing in growth as the community hospitals.

Other hospitals

The almost 800 non-Federal psychiatric, tuberculosis and other respiratory disease, chronic disease, and alcoholism and chemical-dependency hospitals that make up "other hospitals" are projected to grow at a 4.4 percent average annual rate from 1984 to 1990. Expenditures at these hospitals are estimated to be \$12 billion in 1984 and to grow to more than \$15 billion in 1990. Growth in the projected period is down slightly from the 1978 to 1984 growth of 5.3 percent, a difference accounted for by the estimate of lower inflation upon which these forecasts are predicated.

Physicians' services

Physicians have traditionally exerted far more influence on the health care sector than their 22-percent share of personal health care indicates. This is attributable to the fact that they are the primary decisionmakers in what kinds of health care patients receive, such as hospital care or drugs. However, although physicians' share of health care expenditures is growing, their role in decisionmaking may be lessening. The impact cost-containment policies such as second opinions means that often a single physician cannot decide a patient's course of treatment. But, the roots of the declines in physician influence go much deeper than the effects of second-opinion programs. Hospitals have been put under pressure by private and public cost-containment efforts. Previously, in an effort to attract and hold physicians, hospitals were

almost forced to acquire the newest and best of technologies and supplies. Now, they must face tighter budget constraints. An example of these constraints is the fixed-price prospective payment system under Medicare. Perhaps even more effective are private sector programs such as hospital bill audits, more cost sharing between the insurer and the insured, coordination of benefits, preferred provider organizations, and increased competition from HMO's. These programs put downward pressure on hospital revenue sources by reducing double or overpayments, discouraging hospital use, or conversely, by encouraging use in nonhospital settings, or requiring discounted prices.

Physicians now know that their practice privileges in an institution could be jeopardized if they are not cost efficient. Computer audits of patient stays, based on diagnosis, enable hospitals to identify physicians who tend to overutilize services. As hospital resources decrease, there will be increased competition among physicians for access to those resources. The result is that hospital administrators will play a much larger role in hospital management and, hence, physicians a lesser role (American Medical Association, 1985).

Expenditures for physicians' services are projected to grow at an annual average rate of 9.8 percent from the 1984 level of more than \$75 billion, reaching almost \$132 billion by 1990. The growth rate from 1978 to 1984 was 13.2 percent. The slower projected growth rate is a result of many factors, including lower average inflation during the projection period than from 1978 to 1984. Competition from hospital outpatient departments may also limit the growth in expenditures for physicians' services. How the decline in inpatient hospital use will affect physicians is still to be seen. To the extent that physicians' services are complementary to hospital care, one would expect physicians' services to be restrained; to the extent that physicians' services can substitute for inpatient care, a physician's role in health care delivery may grow. In the projection presented here, the physician portion of personal health services is projected to increase slightly from a 1984 share of 22.1 percent to a 1990 level of 23.2 percent. Per capita expenditures for physician care are projected to increase from \$307 in 1984 to \$510 in 1990. The average annual growth rate for the period 1984 to 1990 is 8.8 percent, down from 12.1 percent for the period 1978-84.

Dentists' services

After years of reasonably strong growth, dental expenditures are projected to moderate somewhat, remaining at an essentially constant percent of total personal health care. Amalgam sales, after adjusting for the price of silver, are down in the current period. This suggests a decline in restorative work because of the combined effects of improved dental hygiene, fluoridation, and a slackening in the growth in insurance coverage for dental care (Bureau of Labor Statistics, 1985). With regard to the latter, many employees gave up dental and vision benefits during

the recession period in exchange for wages. This phenomenon was particularly true in the heavy industries, where emphasis has shifted from maintaining fringe benefits to keeping jobs. In addition, many dental plans have added or increased deductibles and coinsurance.

Dental expenditures are estimated to be \$25 billion in 1984 and are projected to be \$42 billion by 1990. The annual average growth rate in dental expenditures for the period 1984 to 1990 is projected to be 9.0 percent, compared with the 13.4 percent rate from 1978 to 1984. The lower rate is reflected in all five projection factors, but moderation of economy-wide inflation has the most impact on the slowing of the rate of increase in dental expenditures.

Other professional services

Other professional services include the services of freestanding home health agencies (HHA's), optometrists, podiatrists, chiropractors, private duty nurses, occupational, speech, and physical therapists, clinical psychologists, and others who are engaged in independent practice. In 1990, a projected \$16 billion will be expended on the services of these other professionals, almost double the 1984 level of less than \$9 billion. These services are projected to experience a faster rate of growth than most other personal health services, although the growth from 1984 to 1990 is 10.6 percent compared with a growth of 13.4 percent from 1978 to 1984 because of lower projected overall price levels. As this category includes nonhospital-based home health agencies, one might expect increasing rates of growth in the projected period as is also projected for other substitutes for hospital inpatient care. However, a significant portion of home health agency growth is hospital based and is included in expenditures for hospital care.

Drugs and medical sundries

Drugs and medical sundries dispensed through retail channels are projected to grow from 1984 level of less than \$26 billion dollars to a 1990 level of almost \$44 billion. Drug prices are projected to grow slightly faster than economy-wide prices. This forecast is consistent with reports that new and expensive drugs are being developed, including biogenetically created drugs (Business Week, 1985).

Eyeglasses and appliances

After a surge of purchases following the recent recession, expenditures for eyeglasses and appliances are projected to grow at an average annual rate of 8.1 percent from 1984 to 1990. The 1984 expenditure level for this category (more formally and perhaps descriptively named ophthalmic products, orthopedic appliances, and durable medical equipment) is more than \$7 billion. The projected 1990 level is \$12 billion. Although ophthalmic products comprise the majority

of these expenditures, durable medical equipment is an area where more future growth may occur. The rationale for this speculation is based on the notion that earlier discharges from or nonadmission into hospitals may cause significant increases in the amount of self or family health care. This will result in the purchase of more durable medical equipment and supplies.

Nursing home care

Nursing homes, including intermediate care facilities for the mentally retarded is the third largest component of personal health care (after hospitals and physicians). Nursing home care, along with physician expenditures, are the only significant categories of personal health care expected to increase as a share of the total (Table 6). Nursing home care expenditures are projected to be more than \$56 billion in 1990, growing at an average annual rate of 9.8 percent from the 1984 level of \$32 billion. The average annual growth rate from 1978 to 1984 is 13.4 percent. The nursing home growth, which is strong in relation to the growth rate projected for most other components of personal health care, is supported by demographic shifts towards the elderly and especially the extremely elderly. Also, as with home health care, some expenditures for nursing home care will be precipitated by the shorter hospital stays expected under continued cost-containment efforts.

Other personal health care

The other health services category consists primarily of care provided in Federal units other than hospitals, school health services, and industrial in-plant services. This category is projected to account for more than \$16 billion in expenditures in 1990, compared with a 1984 level of more than \$9 billion, an average annual growth rate of 9.5 percent per annum.

Program administration and net cost of health insurance

Expenses for program administration and net cost of health insurance include the administrative costs of public programs and private voluntary health organizations for lobbying, fundraising, and similar activities. It also includes the difference between private health insurance benefits and premiums, that is, the net cost of purchasing health insurance. The total for this category will rise from \$19 billion dollars in 1984 to a projected level of more than \$29 billion in 1990. Insurance comprised 70.2 percent of the 1984 total for program administration and net cost of insurance and is projected to be 71.4 percent in 1990. Nevertheless, growth in this category and especially in insurance has slowed considerably because of competition in the insurance industry and increased awareness on the part of employee benefit specialists. This trend should continue as employers become

purchasers of health care instead of payers and as the options available to them, such as PPO's and HMO's, continue to expand.

Government public health activities

The current budgetary constraints and concerns are having a considerable impact on expenditures for public health. State and local expenditures account for almost 90 percent of these activities. Their expenditures will grow at an average annual rate of 9.1 percent from 1984 to 1990, at less than one-half the 18.7 percent growth rate from 1974 to 1984. The 1990 level for public health is projected to be more than \$17 billion, which is still a considerable increase over the almost \$11 billion level in 1984.

Research

Research is another area affected by budget considerations, although it may not be to the same extent as public health. One factor supporting increases in research is public concern over a variety of diseases, such as cancer and acquired immune deficiency syndrome (AIDS). Federal research comprises about 85 percent of the total and has, on average, grown at a constant 7.5-percent rate. Overall research expenditures are projected to grow from a 1984 level of a little less than \$7 billion to a 1990 level of \$10 billion, a 6.9 percent average annual rate of growth.

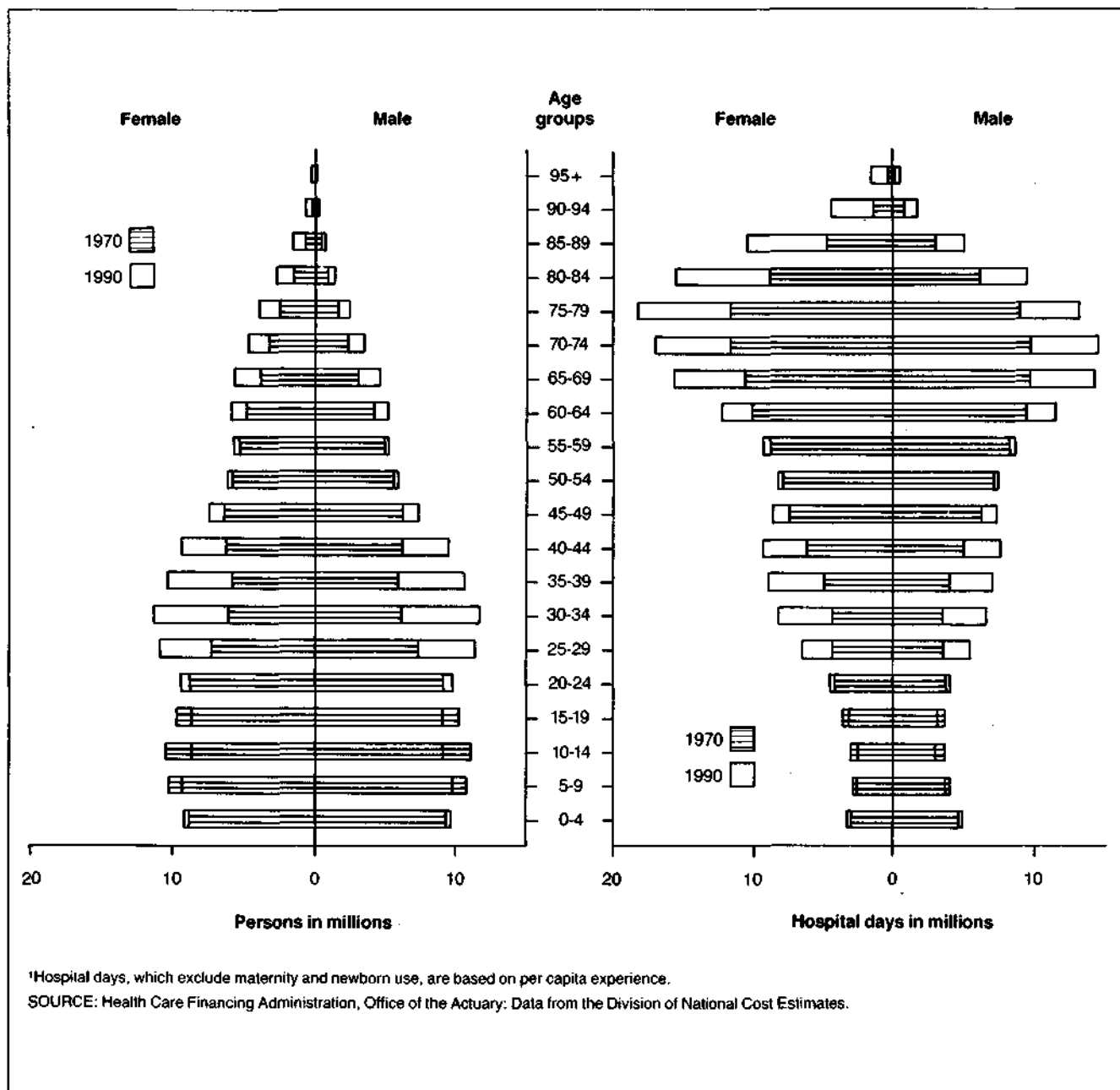
Construction of medical facilities

As might be expected from the declines in utilization, budget constraints, and general uncertainty, growth in construction has slowed to a pace consistent with replacement needs. These declines reflect reductions in hospital building. Construction of nursing homes and other less expensive facilities are continuing to grow (Punch, 1985). The rate of private construction, which represents 70 percent of the total, declines from an 11.8 percent growth from 1978 to 1984 to a projected 4.4 percent growth from 1984 to 1990. The change for construction for the last historical year was -1.9 percent. The projections in the out-years represent an assumption of a return to more normal growth patterns.

Demographics of health expenditures

In the past, the projections have implicitly recognized the effects of population aging in the selection of forecast assumptions, considering the work of several researchers. Analyses are now being prepared to explicitly recognize the effects of changes in age structure on average use and average price per service. Some preliminary results of these studies are summarized here. The U.S. population in 1970 and 1990 and the corresponding number of hospital days of care are charted in the typical format of a

Figure 1
Population and days of hospital care, by age and sex: 1970 and 1990



population pyramid (Figure 1). The hospital days, which exclude maternity and newborn utilization, are based on the per capita experience reported in the National Hospital Discharge Survey (NHDS) of 1981. The shape of the population pyramid is determined largely by the fertility history of the United States and the mortality patterns by age and sex. Of particular importance to this analysis are the indentations corresponding to the low birth rates of the 1930's depression, the bulge of the post-World War II baby boom, followed by the baby bust of the 1970's. These demographic features will influence demand for medical services into the next century.

The area under the population pyramid represents total population, and the area under the hospital

utilization pyramid represents total hospital days of care used per year. Although the areas are roughly equal, the distribution by age is almost exactly reversed. As the proportion of the population in the older age groups increase from 1970 to 1990, the effects on utilization are magnified by the sharply higher use of services among the aged. This is the phenomenon of the effect of aging on the demand for medical care. The effects of aging depend on the relative use of services by age. Because hospital use generally increases with age, population aging tends to drive up hospital use faster than the growth in population. For services where use declines with age, such as dentistry, use will tend to increase more slowly than population growth.

Actual utilization patterns by age and sex are shown for five commonly used services (Figure 2 through 6). Hospital utilization is from the NHDS of 1981 referred to earlier. Physician office visits and prescribed drug utilization for the noninstitutionalized are from the National Medical Care Expenditure Survey (NMCES) of 1977. Dental visits are from the Health Interview Survey of 1981. Nursing home residency rates were taken from the 1980 census. All rates except nursing homes have been smoothed by using the Whittaker-Henderson graduation technique.

Except for the dental services, use rates generally increase with age, except perhaps at the very oldest ages. Although the sample sizes are usually small at extreme old ages, it appears that use of most services (except nursing homes) plateaus or even decreases after about age 85. Medicare data also suggest a similar pattern. It has been observed that mortality rates also tend to stabilize at very old ages, perhaps

because survival to these ages produces a super select population. Utilization is also very different by sex. The higher use of nursing homes by older females is probably not because of higher morbidity (their hospital use is lower than that of males) but to the fact that females are more likely than males to be alone at old ages because of their lower mortality rates.

Prices per unit of service also vary by age and sex (Figures 7 through 11). Hospital costs are from the National Medical Care Utilization and Expenditure Survey (NMCUES) of 1980. Nursing home charges are from the 1977 National Nursing Home Survey. Prices for the other services are from NMCES (1977). Most prices per measured unit increase with age augmenting the impact of aging on utilization. Hospital costs per day, however, decrease with age because the longer stays of the aged spread out costs. This somewhat offsets the effects of aging.

Figure 2
Hospital days¹ per 1,000 persons, by age group and sex: 1981

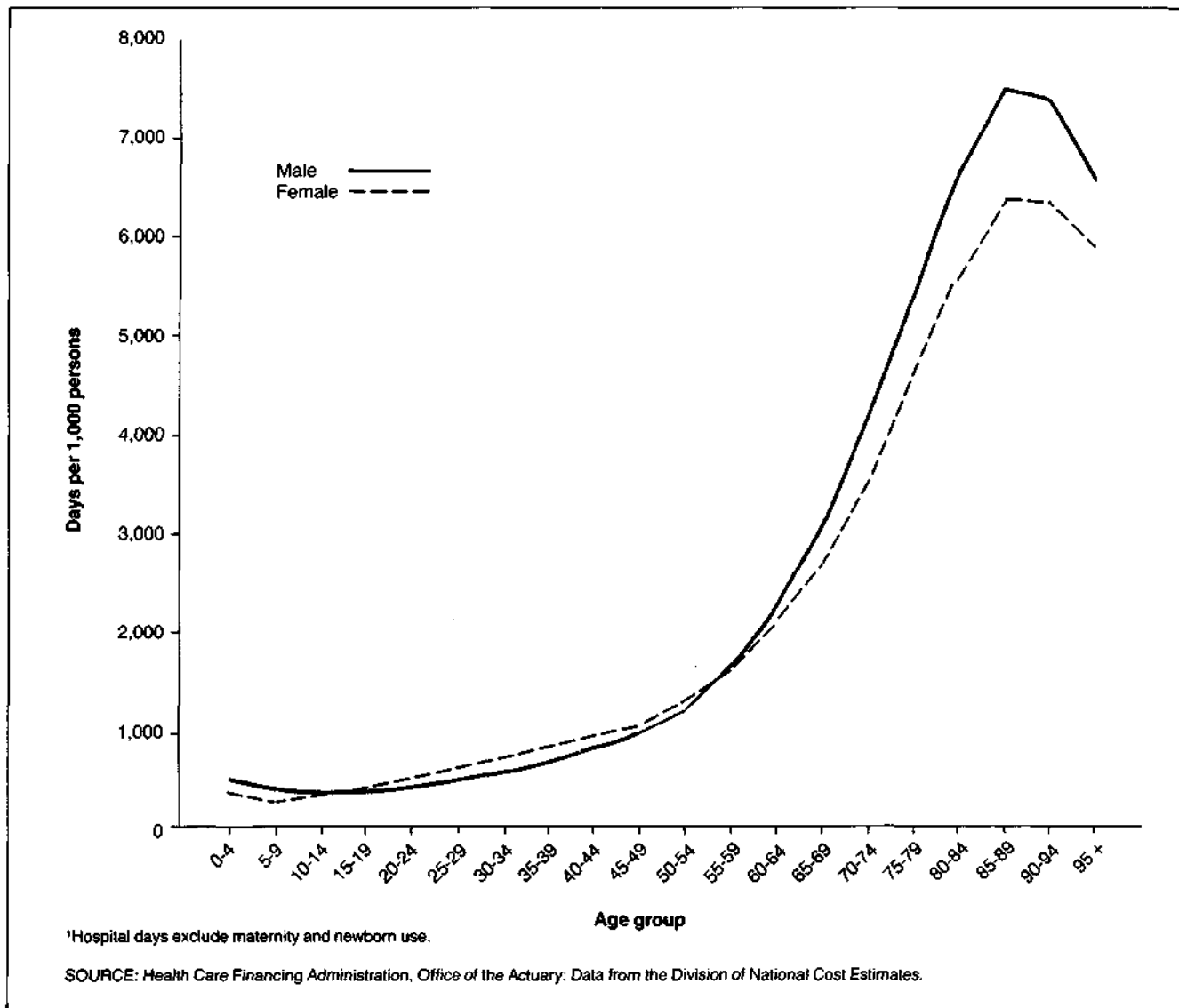
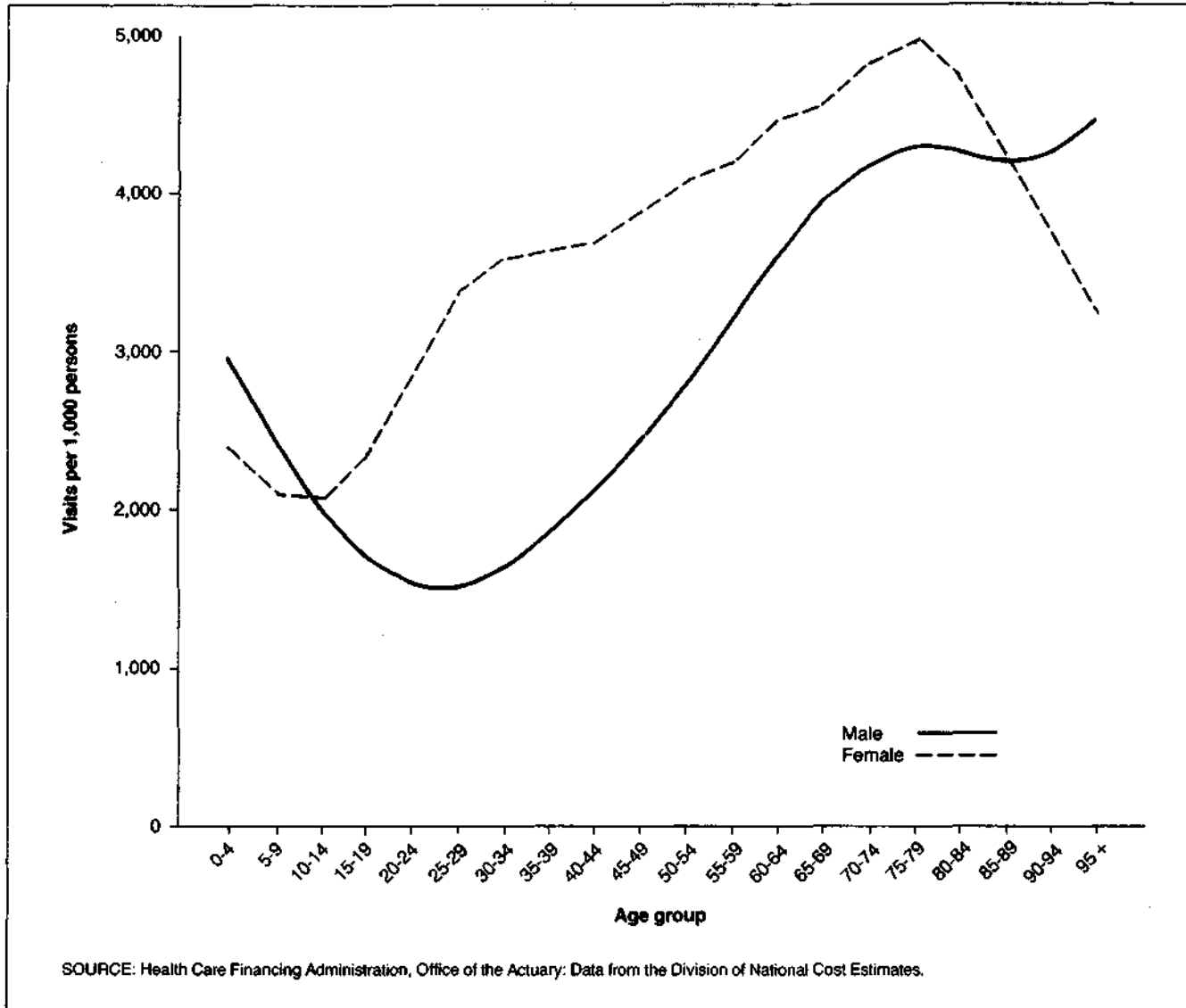


Figure 3

Physician office visits per 1,000 noninstitutionalized persons, by age group and sex: 1977



The effects of changes in population composition on aggregate utilization rates were calculated by multiplying a fixed set of age-sex specific utilization rates by population in each group for each year from 1965 to 1990. The population data and projections were provided by the Office of the Actuary of the Social Security Administration (Wade, 1985). The methodology is essentially the same as used by several other researchers (Russell, 1981). The average aggregate use per capita was then computed for each year. The result shows changes generated solely by population mix, exclusive of population growth (Table 13).

During the period 1965-90, the demographic component of change in use is much more stable than the change in total use. The medical care system underwent major perturbations in this period, especially the introduction of Medicare and Medicaid in the mid-sixties. For most services, the effect of

aging is stronger for females than for males because of lower female mortality. In the 65 years of age or over group, the effects of aging dropped to a minimum during the period 1975 to 1980 because the relatively large pre-depression birth cohort was just turning 65, holding down the increase in the average age among the elderly. As that cohort ages and the small birth cohort of the depression turns 65 about 1995, the effects of aging in the over age 65 group will accelerate.

The distinctive feature of the under 65 years of age population is the bulge from the baby boom which peaked about 1960. As that population started entering early adulthood in about 1980, the demographic influence on hospital and physician services started to rise. The most dramatic upturn is expected early in the next century as this cohort approaches the steeper portion of the utilization curves.

Table 13
National health expenditures average annual change per capita, by type of service and demographic factors: Selected periods 1965-90

Type of service and period	Actual change	Demographically induced change					Price change
		Utilization change					
		Total	Male	Female	Under age 65	Age 65 or over	
Hospital days (excluding maternity)							
1965-70	1.9	0.4	0.2	0.7	0.1	0.5	.01
1970-75	0.0	0.6	0.4	0.8	0.1	0.1	-.06
1975-80	0.8	0.7	0.5	0.8	0.3	0.1	-.10
1980-85	-4.6	0.7	0.5	0.8	0.2	0.2	-.15
1985-90	-1.6	0.7	0.6	0.7	0.2	0.3	-.14
Physician office visits							
1965-70	0.4	0.0	-0.2	0.1	0.0	0.0	0.14
1970-75	2.7	0.1	-0.2	0.3	0.0	0.0	0.19
1975-80	-1.2	0.2	-0.1	0.3	0.1	0.0	0.17
1980-85	-1.0	0.2	0.1	0.2	0.1	0.0	0.09
1985-90	-0.2	0.2	0.2	0.2	0.1	0.0	0.08
Nursing home days							
1965-70	9.3	2.2	1.1	2.8	0.5	1.9	—
1970-75	4.9	2.0	1.0	2.4	0.4	0.9	—
1975-80	2.4	1.8	1.0	2.1	0.3	0.7	—
1980-85	1.6	1.8	1.1	2.1	0.1	0.8	—
1985-90	1.4	2.0	1.5	2.2	-0.1	0.9	—
Prescriptions							
1965-70	—	0.2	-0.1	0.3	0.0	0.1	0.05
1970-75	—	0.3	0.0	0.4	0.1	0.0	0.06
1975-80	—	0.4	0.1	0.5	0.2	0.0	0.05
1980-85	—	0.3	0.3	0.4	0.2	0.0	0.03
1985-90	—	0.4	0.4	0.4	0.2	0.0	0.05
Dentists							
1965-70	-0.8	0.2	0.2	0.2	0.3	-0.1	0.10
1970-75	1.4	0.2	0.1	0.2	0.2	0.0	0.13
1975-80	0.5	0.0	0.0	0.0	0.0	-0.1	0.11
1980-85	0.9	-0.1	-0.1	-0.1	-0.1	-0.1	0.05
1985-90	0.2	-0.1	0.0	-0.1	0.0	-0.1	0.05

SOURCE: Health Care Financing Administration, Office of the Actuary: Data from the Division of National Cost Estimates.

This preliminary analysis is a prelude to expanding the five-factor model to seven factors in order to quantify the portion of utilization and price change that have been produced because of demographic effects. In the past two decades, that effect has been relatively small except for nursing home services. In the relatively near future, it is expected to increase rapidly and become a more important element of analyses of expenditure trends. Long-term projections would be meaningless unless population mixes were considered.

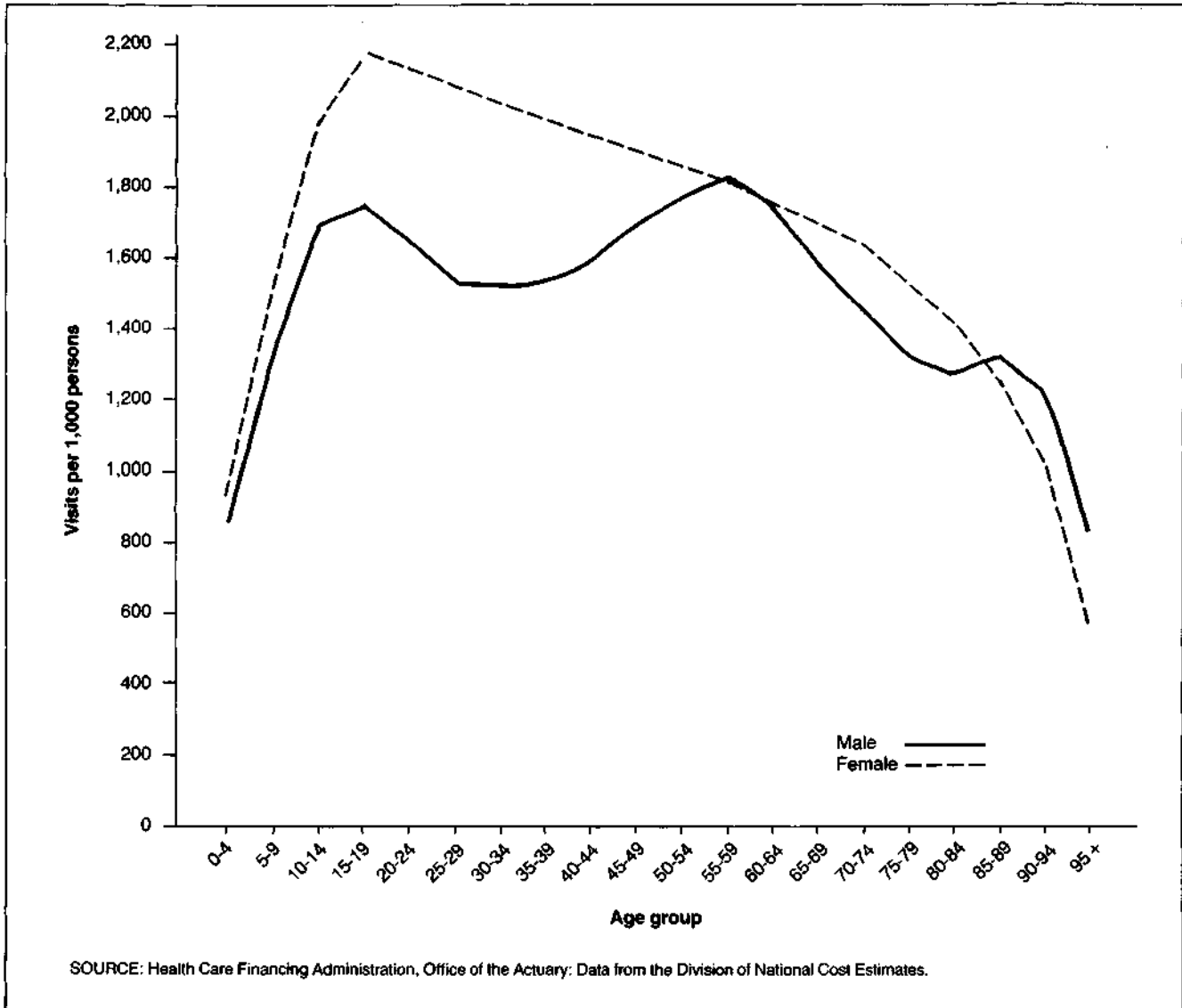
Projection methodology

The projection model provides a framework that includes economic, actuarial, statistical, demographic, and judgmental factors. A relatively simple and intuitive model was developed to project expenditures for each type of service, such as, hospital care,

physicians' services, and nursing home care, and sources of payment for these expenditures, for example, out-of-pocket expenses, the Federal Government, and State and local governments (Levit et al., 1985). Expenditures and sources of funds for each type of expenditure are aggregated to produce national health expenditures.

The projection model incorporates projections from the Board of Trustees 1985 Annual Reports (population, implicit price deflator for GNP, gross national product, and Medicare outlays by type of service). Aggregate Federal Medicaid outlays are derived from Health Care Financing Administration (HCFA) projections from the Midsession Review of the 1986 Budget. Health manpower projections made by the Bureau of Health Professions (Health Resources and Services Administration, 1985) are included in the projection model.

Figure 4
Dental visits per 1,000 persons, by age group and sex: 1981



All other projections are based on trends and relationships observed in the historical time-series data and on special condition assumptions applicable for particular sectors of the health care industry.

The projection model has four components: (1) a five-factor module for specific types of expenditures (such as physicians' services),² (2) supply variables

(such as the number of physicians and the number of nursing home beds), (3) a channel of finance module for eight sources of funds, and (4) a net cost of private health insurance and program administration cost module. Interaction and consistency among these four components are essential features of the projection process.

²The effects of the other three components of the projection model (supply variables, sources of funds, and net cost of private health insurance and program administration cost) are reflected in the five-factor module.

Figure 5
Number of nursing home residents per 1,000 persons, by age group and sex: 1980

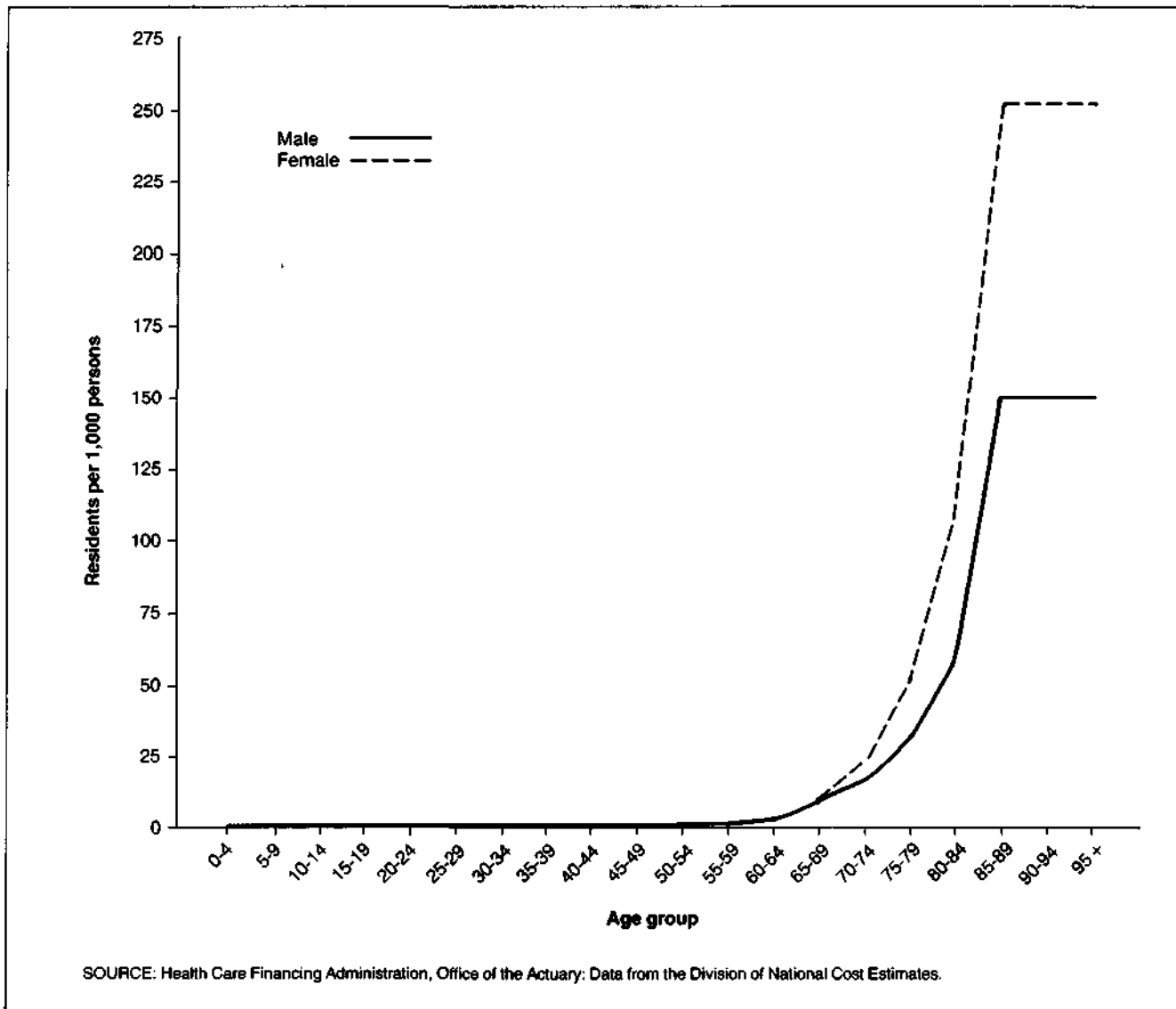


Figure 6

Number of prescriptions per 1,000 noninstitutionalized persons, by age group and sex: 1977

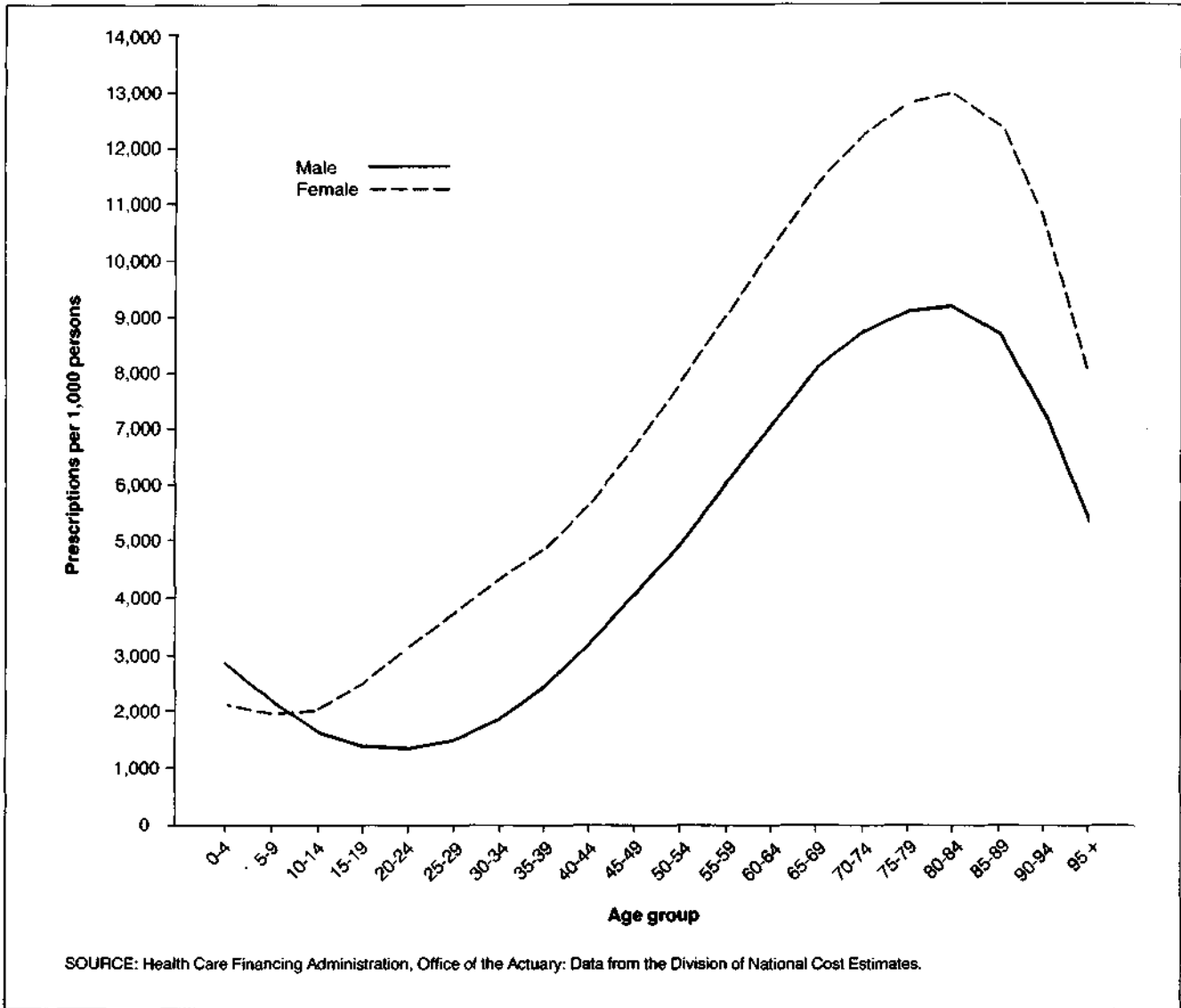


Figure 7
Hospital cost per day, by age group and sex: 1980

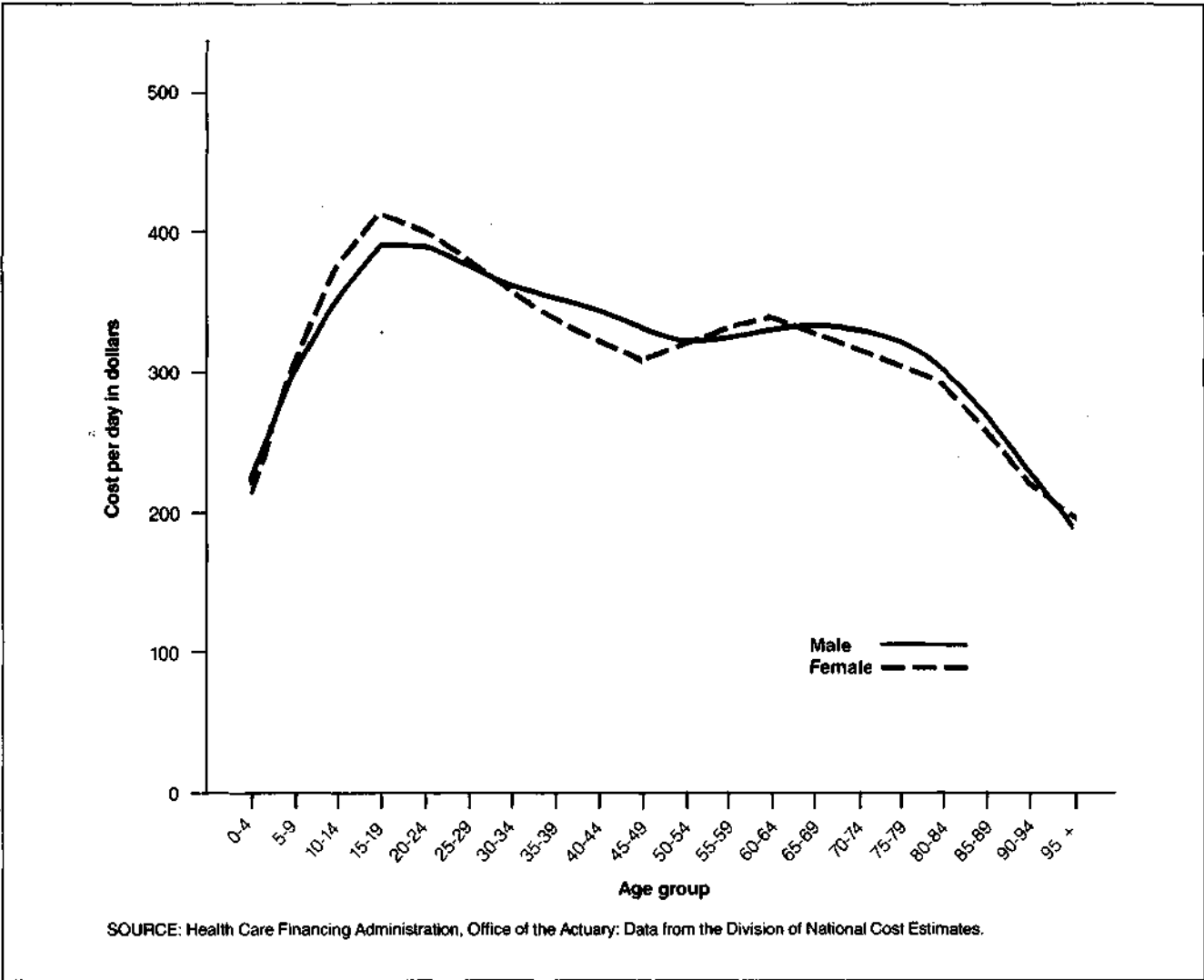


Figure 8
Cost per physician office visit, by age group
and sex: 1977

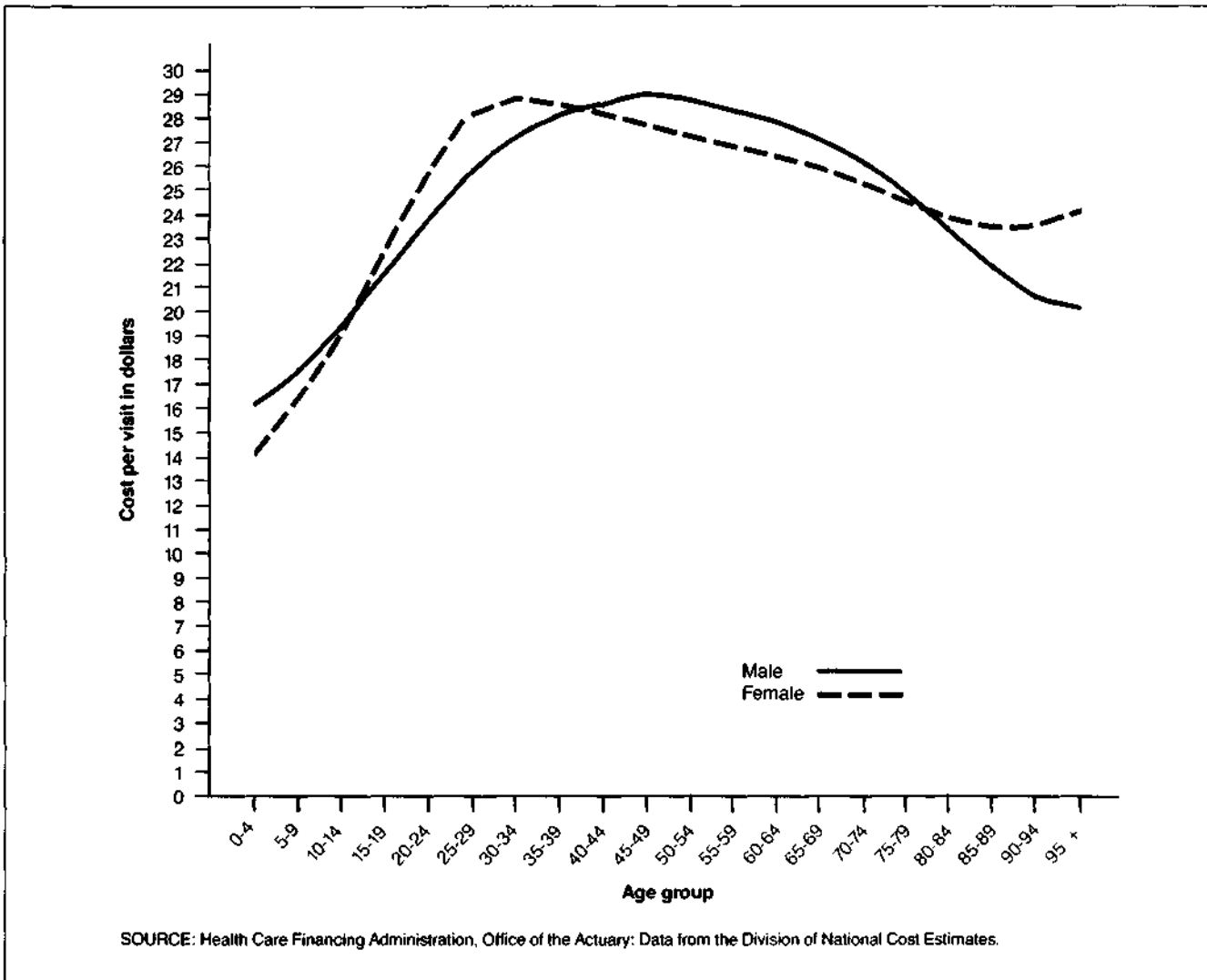


Figure 9
Cost per dental visit, by age group and sex: 1977

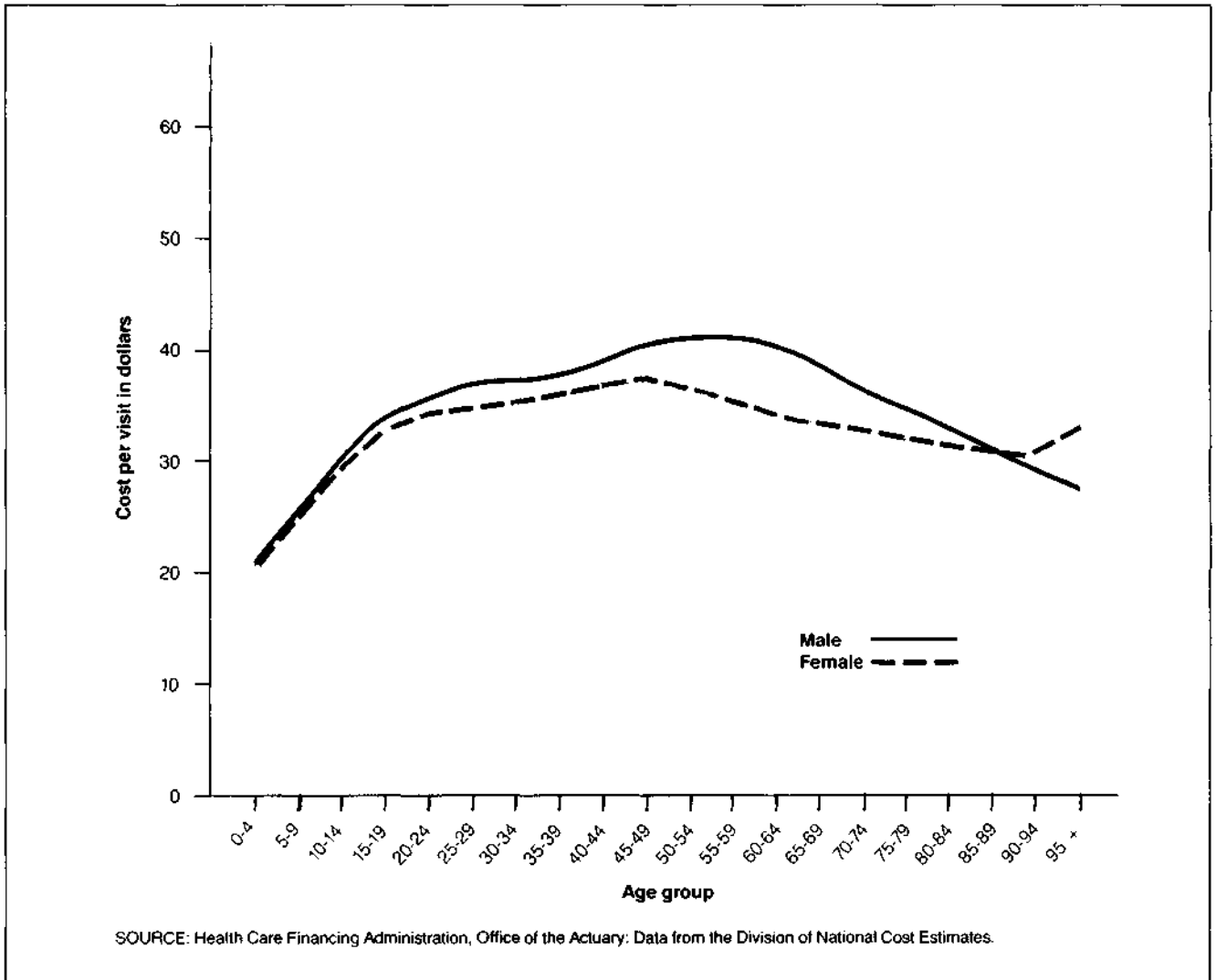


Figure 10
Nursing home cost per month, by age group: 1977

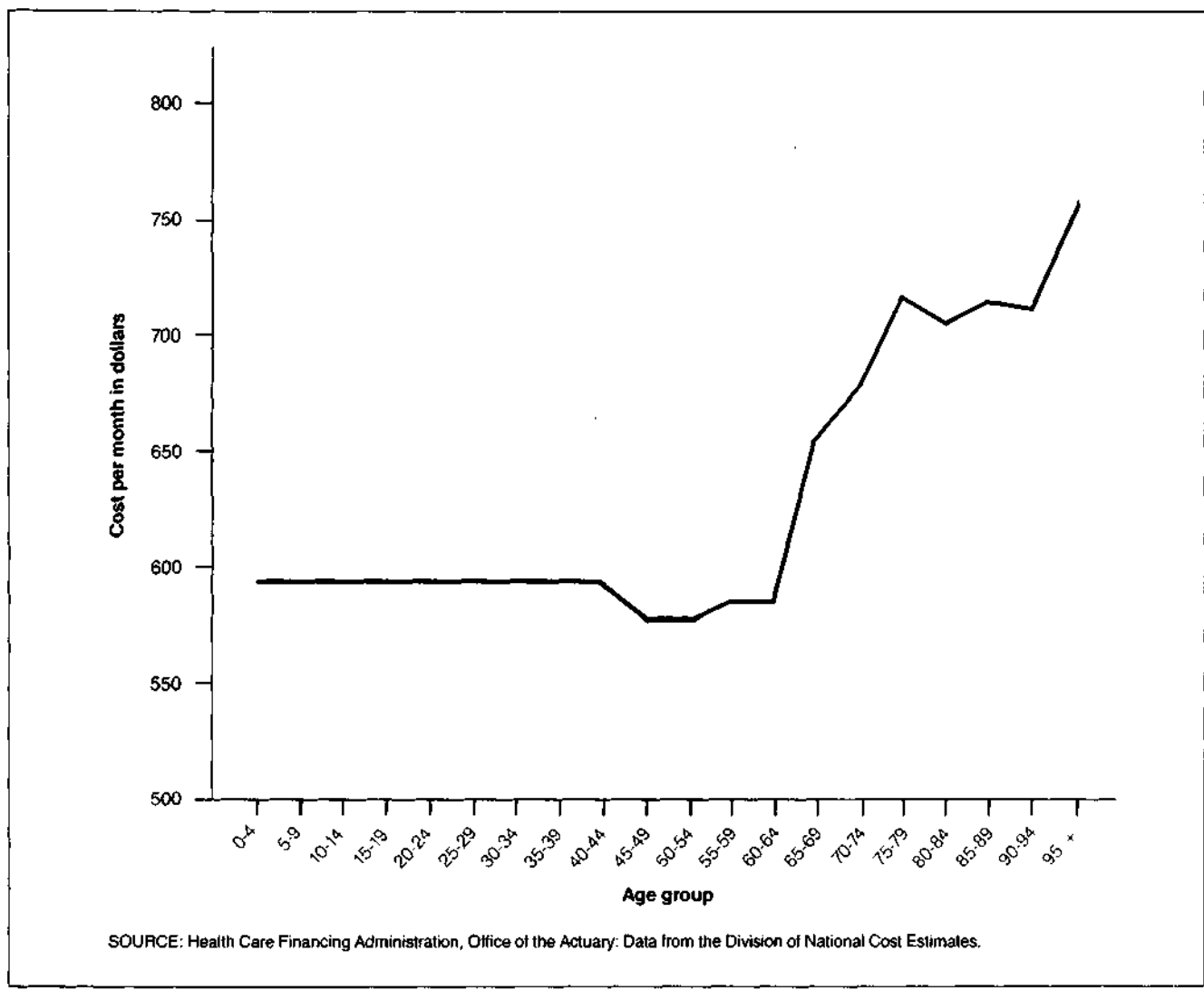
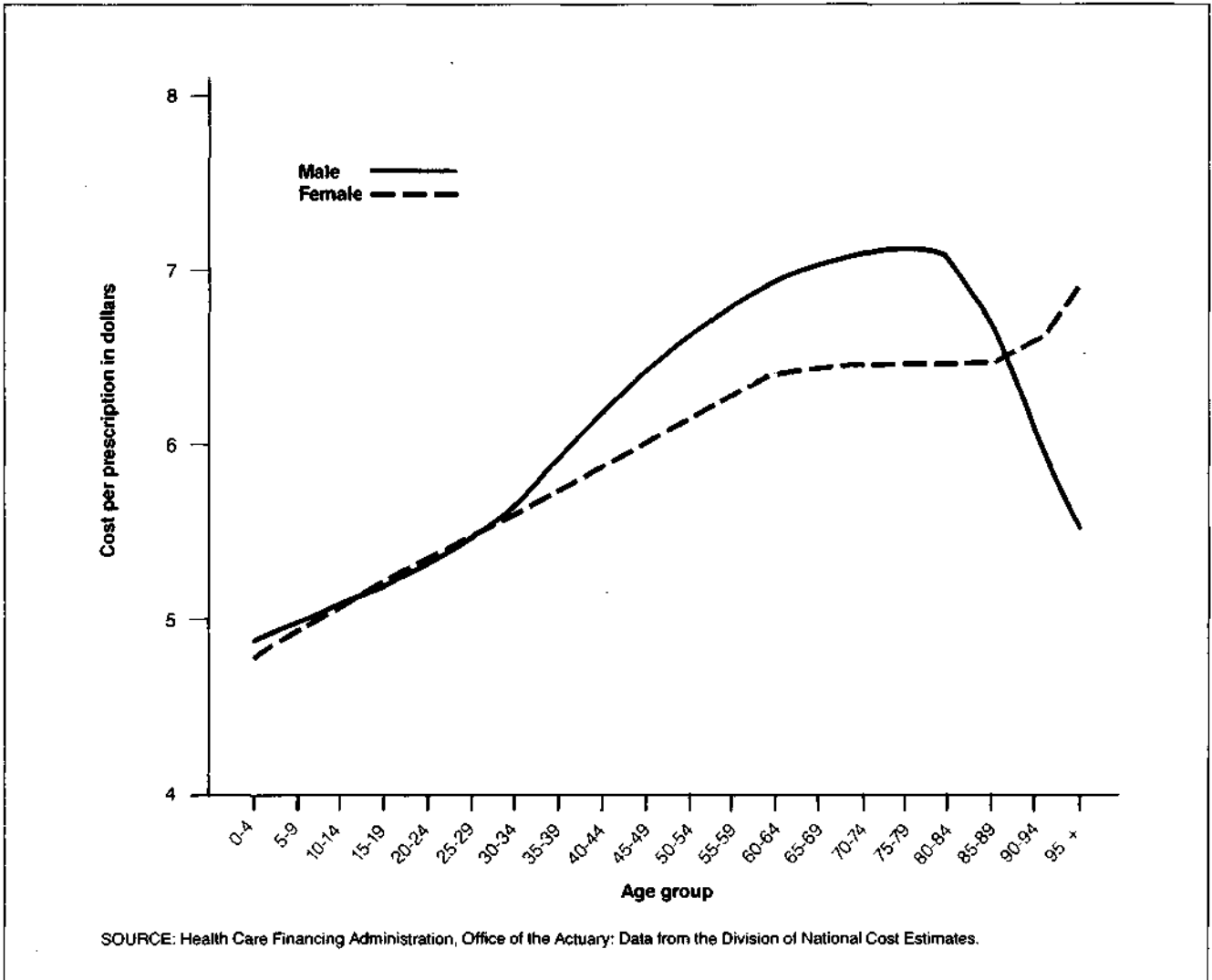


Figure 11
Cost per prescription, by age group and sex: 1977



Five-factor module

An equation with five factors is used to project each expenditure type. The five factors are total population, use per capita (visits per capita, patient days per capita), the GNP deflator, medical care prices relative to the GNP deflator, and a residual category, real expense per unit of service. This last factor reflects use per unit of service.

The equation is solved sequentially for each year in the projected period:

$$EXP_{it} = EXP_{it-1} (1 + \%CH(POP_t)) (1 + \%CH \left(\frac{UTIL}{POP} \right)_{it}) (1 + \%CH(PGNP_t)) (1 + \%CH \left(\frac{MEDPRICE}{PGNP} \right)_{it}) (1 + \%CH(RESIDUAL_{it}))$$

EXP_{it} is the projected level of health expenditure of type "i" in year "t" (for example, the level of expenditures for physicians' services in 1985, the first year of projected values).

EXP_{it-1} is the level of health expenditure for type "i" for year "t-1." This is an historical value for calendar year 1984 and a projected value thereafter. Historical expenditures are from the Health Care Financing Administration (Levit et al., 1985).

$\%CH(POP_t)$ is the projected annual percent change, divided by 100, of total population for year "t" compared to year "t-1." For example, population was projected to grow from 245,226 (in thousands) in 1984 to 247,424 in 1985, an increase of 0.90 percent ($247,424/245,226 = 1.009$). POP_{1985} is .009 and the first term in parentheses of the five-factor equation for E_{1985} is 1.009.

Shifts in the demographic mix (for example, toward more aged persons) that affect utilization growth rates are factored into the next variable, growth in use per capita.

$\%CH \left(\frac{UTIL}{POP} \right)_{it}$ is the projected annual percent change, divided by 100, of per capita use of medical service type "i" in year "t," where use is measured by patient visits per capita, patient days per

$\%CH(PGNP_t)$

$\%CH \left(\frac{MEDPRICE}{PGNP} \right)_{it}$

$\%CH(RESIDUAL_{it})$

capita, or some similar measure.

is the projected annual percent change, divided by 100, of the implicit price deflator for GNP for year "t." Growth in the GNP deflator reflects economy-wide cost pressures that are external to the health care industry.

is the projected annual percent change, divided by 100, of medical care price for service type "i" in year "t" deflated by the implicit price deflator for GNP for year "t." This measures change in medical care prices relative to overall prices in the economy. It captures the implicit underlying interplay of (1) demand-pull inflationary forces (such as changes in deductibles and coinsurance), (2) cost pressures specific to the industry, (3) supply-side pricing behavior, (4) supply-side productivity behavior, and so on.

is the projected annual percent change, divided by 100, of the residual category for service type "i" for year "t." This factor can be interpreted as the percent changes in real expenditures per unit of service, such as per physician visit or per hospital day. This factor includes changes in the number of diagnostic and therapeutic procedures provided per visit or inpatient day, changes in the mix of services, and changes in regulations that impact on the quantity and quality of resources used to produce a visit or patient day. Like all residuals, it is an amalgamation of effects that cannot be individually measured or differentiated. Because the measures of price used are imperfect, this category should be interpreted with caution. For example, errors in the price change variable get translated into compensating errors in the movement of the residual category.

Although the general model accounts for five factors, models for some types of expenditure have four factors because of irrelevance or lack of data. In these instances, growth rates for use per capita and real expense per unit of service are combined into one residual category, growth in real expenditures per capita. The combined effects of the five factors are multiplied to obtain a composite annual rate of expenditure growth for each type of expenditure for each year in the projected period.

Numerous data sources were used to factor individual types of expenditures into the three components specific to the health sector (use per capita, medical care prices relative to overall prices in the economy, and real expenses per unit of service). Growth rates from 1985 to 1990 for these factors are based on historical relationships and trends.

Annual percent changes and average annual growth rates were studied for selected sub-periods between 1965 and 1984. Certain sub-periods were considered irrelevant because they were affected by unique forces not expected to be repeated (for example, the initial impact of Medicare or the Economic Stabilization Program (ESP) on prices and use of services).

In general, medical care prices increase faster than the GNP deflator. During periods of high growth in commodity and energy prices, the differential between medical care prices and economy-wide prices usually narrows. In addition, when overall price increases in the economy decelerate, increases in medical care price typically decelerate with a marked lag.

Growth rates in use per capita and real expense per unit of service may be influenced by shifts in the age-sex distribution of the population, and by changes in the proportion of expenses funded by third parties, health manpower, real income, and regulation of the health sector. Growth rates for use per capita and real expenses per unit of service were examined together, because one may offset the other. Years of abnormally high growth in visits per capita, for example, may be associated with years of abnormally low growth in real expense per visit, and vice-versa.

Taking the above considerations into account, year-to-year growth rates from 1985 to 1990 were projected for medical care prices relative to the implicit price deflator for GNP, use per capita, and real expenses per unit of service.

The product of the growth rates for these factors and the projected growth rates for total population and the implicit price deflator for GNP, yield yearly expenditure growth rates for each type of service for the projected period. Expenditure levels are derived by multiplying the projected expenditure growth rates times the prior year's expenditure level. This is an historical value for 1984 and a projected value thereafter. Projected yearly totals of national health expenditures are calculated by summing all expenditure types.

Projection of selected supply variables

Selected supply variables are projected simultaneously with the process just discussed (the five-factor projection module). In some cases, supply projections were taken from specialists in those areas.

Projections of the number of active medical doctors (M.D.'s), doctors of osteopathy (D.O.'s), and dentists are obtained from the Bureau of Health Professions within the Department of Health and Human Services. Projections of non-Federal, office-based M.D.'s, D.O.'s, and dentists are then made by the Health Care Financing Administration, based on historical relationships between active physicians and dentists and non-Federal, office-based practitioners.

Revenues and real output per non-Federal, office-based physician and dentist are projected simultaneously with the projection of expenditures for services of physicians and dentists by using the five-factor methods. Growth in the number of visits, real expenditures per visit, and medical care prices relative to the GNP deflator are iteratively adjusted until reasonableness based on historical trends and relationships is obtained for both the five-factor module and the revenues and real output per physician and dentist sectors.

The number of community hospital, Federal hospital, and nursing home beds and occupancy rates are projected simultaneously with patient days to reflect judgments relating to the interplay of patient demand (involving such factors as: demographics, insurance, and real income), regulations pertaining to new construction, credit costs, and credit availability.

Projection of sources of funds

For each type of expenditure, the channel of finance module projects eight sources of funds: (1) direct or out-of-pocket payments, (2) private health insurance, (3) spending by philanthropic organizations, industrial in-plant health services (for example, an onsite nurse), and privately financed construction, (4) Medicare, (5) Federal Medicaid, (6) other Federal, (7) State and local Medicaid, and (8) other State and local (Levit et al., 1985). Medicare actuarial projections of Medicare benefit outlays used the same assumptions for overall inflation, GNP, and so forth, that were used for these national health expenditure projections. Growth in aggregate Federal Medicaid benefit outlays is consistent with HCFA budget projections.

Projections for all other sources of funds are based on historical trends modified to account for expected changes in the third-party reimbursement system. Amounts derived from the channel of finance and the five-factor modules were adjusted for consistency and reasonableness.

Program administration, insurance net cost

Expenses for program administration and net cost of private insurance include three components:

(1) administrative expenses of government-financed programs, (2) nonpersonal health expenditures of private voluntary health organizations for health education, lobbying, fundraising, etc. (Levit et al., 1985), and (3) net cost of private health insurance organizations (Blue Cross and Blue Shield Associations, commercial insurance companies, and independent plans).

Administrative expenses for Medicare were projected as part of the Board of Trustees Annual Reports (1985). Growth in administrative expenses for Medicaid are consistent with the HCFA budget projections. Administrative expenses for other programs were projected in accordance with historical trends and relationships.

For private health insurance organizations, net cost reflects the difference between earned premiums (or subscription income) and incurred benefit payments (claims). This amount is retained by private health insurance organizations for operating expenses, additions to reserves, and profits.

Private health insurance benefit payments are projected in the channel of finance module (discussed earlier) for each type of service (e.g., hospital care and physicians' services) for each year. The aggregate of projected insurance benefits is then allocated to Blue Cross and Blue Shield Associations, commercial insurance companies, and independent plans, based on projected trends in relative market shares. Finally, premiums (or subscription income) are projected for Blue Cross and Blue Shield Associations, commercial insurance companies, and independent plans by using load factors to cover operating expenses, additions to reserves, and profits. The net cost of insurance is computed by subtracting the projected total benefit payments from the total premiums.

Table 14
Relative proportion of factors accounting for growth: 1974-84

Factors accounting for growth	Average annual rate of growth 1974-84	Relative proportion ¹
	Percent	
Total	13.4	100.0
GNP implicit price deflator	6.9	51.5
Population	1.0	7.5
Admissions per capita	-0.1	-0.8
Intensity per admission	3.4	25.4
Medical care prices	2.2	16.4

¹The average annual rate of growth for each factor divided by the total.

SOURCE: Health Care Financing Administration, Office of the Actuary: Data from the Division of National Cost Estimates.

Factors accounting for growth

The average annual growth rate for the period 1974 to 1984 was computed for each of the five factors accounting for the growth of selected categories of national health expenditures (Table 14). Only four factors were used for categories such as total personal health care where use per capita is not applicable. The rates of growth in the five factors are added together to produce a total for each type of service representing 100 percent of the growth of the category during the period. Negative growth rates resulting from declines in use per capital in the hospital and physician categories are included to demonstrate their negative impact on total growth. Each factor is then divided by the total to compute the relative contribution of that component to total growth. The same procedure is used to compute the relative proportions of the three factors (use per capita, intensity, and health care prices) that account for sector-specific costs.

Acknowledgments

We wish to thank Mark S. Freeland, Ph.D., for his guidance in the projections process. Dr. Freeland is on sabbatical on a Pew Fellowship for a year at the University of California at San Francisco, Institute for Health Policy Studies. We are indebted to Lawrence Schmid, Office of the Actuary, for developing and performing computer analyses of the demographic data. We also wish to thank George I. Kowalczyk, Director of the Division of National Cost Estimates; Roland E. King, Fellow of the Society of Actuaries and Chief Actuary for the Health Care Financing Administration; and Gordon R. Trapnell, Fellow of the Society of Actuaries, Actuarial Research Corporation, Annandale, Virginia, for their contributions to this effort. Detailed critiques of the article and the projections were made by Katharine R. Levit, Daniel R. Waldo, Helen Lazenby, and George Chulis, all of the Division of National Cost Estimates; Charles R. Fisher, Director of the Division of Information Analysis, and Mark R. Meiners, Ph.D., of the National Center for Health Services Research. We are grateful to Carol Pearson for administrative assistance.

References

- American Hospital Association, National Hospital Panel Survey. Chicago, 1985.
- American Medical Association: *The Environment of Medicine*. Chicago. American Medical Association, 1985.
- Anderson, H.: Outpatient care fuels Catholic systems. *Modern Healthcare* 15(24):26-27, Nov. 1985.
- Barkholz, D.: Aggressive marketing slows decline in hospital admissions, patient days. *Modern Healthcare* 15(23):40, Nov. 1985.

- Board of Trustees, Federal Hospital Insurance Trust Fund: *1985 Annual Report of the Board of Trustees of the Federal Hospital Insurance Trust Fund*. House Document 99-46. Washington. U.S. Government Printing Office, Apr. 1985.
- Board of Trustees, Federal Old-Age and Survivors Insurance and Disability Trust Fund: *1985 Annual Report of the Board of Trustees of the Federal Old-Age and Survivors Insurance and Disability Trust Fund*. House Document 99-47. Washington. U.S. Government Printing Office, Apr. 1985.
- Board of Trustees, Federal Supplementary Medical Insurance Trust Fund: *1985 Annual Report of the Board of Trustees of the Federal Supplementary Medical Insurance Trust Fund*. House Document 99-48. Washington. U.S. Government Printing Office, Apr. 1985.
- Bureau of Health Professions, Health Resources and Services Administration. Unpublished projections, 1985.
- Bureau of Labor Statistics. *Employee Benefits in Medium and Large Firms, 1984*. Bulletin 2237. Washington. U.S. Government Printing Office, June 1985.
- Business Week*. The race for miracle drugs. 2904:92-96, July 22, 1985.
- Cassak, D.: Partners in healthcare—merging the financing and delivery of care. *Health Industry Today* 48(10):38-43, Oct. 1985.
- Coddington, D., Palmquist, L., and Trollinger, W.: Strategies for survival in the hospital industry. *Harvard Business Review*: 63(3):129-138, May-June 1985.
- Davis, K., Anderson, G., Renn, S., Rowland, D., Schramm, C., and Steinberg, E.: Is cost containment working? *Health Affairs* 4(3):81-94, Fall 1985.
- Economic Report of the President*: Washington. U.S. Government Printing Office, Feb. 1985.
- Fisher, C.: Differences by age groups in health care spending. *Health Care Financing Review*. Vol. 1, No. 4. HCFA Pub. No. 03045. Office of Research, Demonstrations, and Statistics, Health Care Financing Administration. Washington. U.S. Government Printing Office, Spring 1980.
- Goldsmith, J.: Death of a paradigm: The challenge of competition. *Health Affairs* 3(3), Fall 1984.
- Jensen, J., and Miklovic, N.: Eighty-three percent of hospitals reporting increased outpatient use. *Modern Healthcare* 15(22):86-88, Oct. 1985.
- Levit, K., Lazenby, H., Waldo, D., and Davidoff, L.: National health expenditures, 1984. *Health Care Financing Review*. Vol. 7, No. 1. HCFA Pub. No. 03206. Office of Research and Demonstrations, Health Care Financing Administration. Washington. U. S. Government Printing Office, Nov. 1985.
- National Center for Health Statistics, Division of Health Interview Statistics: Data from the National Health Interview Survey, 1981.
- National Center for Health Statistics, Division of Health Care Statistics: Data from the National Hospital Discharge Survey, 1981.
- National Center for Health Statistics, Division of Health Care Statistics: Data from the National Nursing Home Survey, 1977.
- National Center for Health Statistics and National Center for Health Services Research: Data from the National Medical Care and Expenditure Survey, 1977.
- National Center for Health Statistics and Health Care Financing Administration: Data from the National Medical Care Utilization and Expenditure Survey, 1980.
- Punch, L.: Healthcare construction boom continued to show vigor in 1984. *Modern Healthcare* 15(5):63-88, Mar. 1985.
- Russell, L.: An aging population and the use of medical care. *Med Care* 49(6):633-643, June 1981.
- Wade, A.: Social security area population projections, 1985. Actuarial Study No. 95. SSA Pub. No. 11-11542. Office of the Actuary, Social Security Administration. Washington. U.S. Government Printing Office, Oct. 1985.
- Waldo, D., and Lazenby, H.: Demographic characteristics and health care use and expenditures by the aged in the United States: 1977-1984. *Health Care Financing Review*. Vol. 6, No. 1. HCFA Pub. No. 03176. Office of Research and Demonstrations, Health Care Financing Administration. Washington. U.S. Government Printing Office, Fall 1984.