

Research article

Open Access

***parkin* counteracts symptoms in a *Drosophila* model of Parkinson's disease**

Annika FM Haywood and Brian E Staveley*

Address: Department of Biology, Memorial University of Newfoundland, St. John's, Newfoundland and Labrador, A1B 3X9, Canada

Email: Annika FM Haywood - annikahaywood@warp.nfld.net; Brian E Staveley* - bestave@mun.ca

* Corresponding author

Published: 16 April 2004

Received: 15 January 2004

BMC Neuroscience 2004, 5:14

Accepted: 16 April 2004

This article is available from: <http://www.biomedcentral.com/1471-2202/5/14>

© 2004 Haywood and Staveley; licensee BioMed Central Ltd. This is an Open Access article: verbatim copying and redistribution of this article are permitted in all media for any purpose, provided this notice is preserved along with the article's original URL.

Abstract

Background: Parkinson's disease, a prevalent neurodegenerative disease, is characterized by the reduction of dopaminergic neurons resulting in the loss of motor control, resting tremor, the formation of neuronal inclusions and ultimately premature death. Two inherited forms of PD have been linked to mutations in the α -synuclein and *parkin* genes. The *parkin* protein functions as an ubiquitin ligase targeting specific proteins for degradation. Expression of human α -synuclein in *Drosophila* neurons recapitulates the loss of motor control, the development of neuronal inclusions, degeneration of dopaminergic neurons and the ommatidial array to provide an excellent genetic model of PD.

Results: To investigate the role of *parkin*, we have generated transgenic *Drosophila* that conditionally express *parkin* under the control of the yeast UAS enhancer. While expression of *parkin* has little consequence, co-expression of *parkin* with α -synuclein in the dopaminergic neurons suppresses the α -synuclein-induced premature loss of climbing ability. In addition directed expression of *parkin* in the eye counteracts the α -synuclein-induced degeneration of the ommatidial array. These results show that *parkin* suppresses the PD-like symptoms observed in the α -synuclein-dependent *Drosophila* model of PD.

Conclusion: The highly conserved *parkin* E3 ubiquitin ligase can suppress the damaging effects of human α -synuclein. These results are consistent with a role for *parkin* in targeting α -synuclein to the proteasome. If this relationship is conserved in humans, this suggests that up-regulation of *parkin* should suppress α -synucleinopathic PD. The development of therapies that regulate *parkin* activity may be crucial in the treatment of PD.

Background

Parkinson's disease (PD) is a neurodegenerative disorder that is characterized by muscle tremors in stationary limbs, bradykinesia (slowed movement) and difficulty initiating and sustaining movements, and affects 1–2% of the population older than sixty years of age [1-5]. As the disease progresses, both the sense of balance and the memory of the affected individual deteriorate. Post-mor-

tem analysis reveals the selective loss of dopaminergic neurons from the substantia nigra region of the brain. Filamentous protein inclusions, known as Lewy bodies, are found within the neuronal cell bodies of the affected area, in most but not all PD patients [4]. Although the majority of PD cases appear to be sporadic, about 5–15% have been determined to have an inherited basis [6,7]. Recently, mutations in a number of genes have been

identified as causes of PD and many of these genes are associated with the ubiquitin/proteasome protein degradation pathway.

Mutations in the gene encoding the α -synuclein protein lead to the development of Autosomal Dominant PD (ADPD) [8,9]. The α -synuclein protein is an abundant 140 amino acid, cytosolic protein found at the pre-synaptic region of neurons [10,11]. α -synuclein appears to be involved in the biosynthesis of dopamine [12,13]. Mutations in the α -synuclein gene [8,9] may lead to enhanced oligomerization and fibril formation of the α -synuclein protein [14-16].

Autosomal Recessive Juvenile Parkinson's disease (ARJP), another inherited form of PD, has been attributed to a number of point mutations and deletions of the *parkin* gene [17-19]. ARJP is specifically characterized by a very early age of onset, mostly before forty years of age, and the absence of Lewy bodies [20-22]. In humans, the *parkin* gene encodes a 465 amino acid protein [17] that functions as one of a number of E3 ubiquitin protein ligases, components of the ubiquitin/proteasome degradation pathway [23]. Ubiquitin protein ligases act to identify damaged, misfolded, and short-lived proteins to mediate the ubiquitination (the sequential attachment of a number of ubiquitin monomers) of these proteins, which are targeted to the proteasome [24,25]. Experiments in tissue culture have demonstrated that parkin can ubiquitinate a number of substrates including a glycosylated form of α -synuclein [26], the Pael receptor [27], CDCrel-1 [28], the α -synuclein-binding protein synphilin-1 [29], and parkin itself [28,30]. The loss of *parkin* may lead to an accumulation of one or a number of proteins in sufficient quantities to cause neuronal cell death.

The interaction of parkin with α -synuclein suggests a common mechanism underlying inherited forms of PD. Indeed, elevated expression of *parkin* protects neuronal explants from the toxicity associated with expression of α -synuclein [26,31]. The disease inducing-forms of α -synuclein may prevent its degradation and result in toxic accumulation. In ARJP, functional parkin protein is lost along with the ability to mediate the ubiquitination of glycosylated α -synuclein and may lead to the accumulation of this protein [26]. Our working hypothesis is that aspects of parkin-mediated protein degradation are compromised in PD.

The first *Drosophila melanogaster* model of PD was generated by the conditional expression of human α -synuclein in transgenic *Drosophila* [32]. Flies that express α -synuclein, in either a pan-neural or dopaminergic neuron specific manner, show a marked age-dependent loss of dorsal-medial dopaminergic neurons. Cytoplasmic inclusions

were observed in α -synuclein-expressing flies approximately 20 days after eclosion. While control flies exhibit a strong negative geotaxis, these transgenic flies prematurely lose their climbing ability. In addition, expression of α -synuclein in the developing eye results in precocious degeneration of the retina. In this model expression of a number of genes are dysregulated prior to the onset of neurodegeneration [33]. These features recapitulate the main behavioural and pathological phenotypes of PD and provide an excellent model system to study the biological basis of the disease.

The *Drosophila* α -synuclein based model has been used to investigate a number of aspects of PD. Pharmacological agents, such as the dopamine precursor levodopa, dopamine receptor agonists (bromocriptine, pergolide and SKF38393), and the anticholinergic atropine, were demonstrated to modify the age-dependent loss of climbing ability [34]. Co-expression of the molecular chaperone HSP70 gene with α -synuclein prevented dopaminergic neuronal degeneration [35]. Interference with endogenous chaperone activity accelerated the toxicity of α -synuclein demonstrating a role for chaperones in the pathology of the disease. Suppression of HSP90, a negative regulator of the heat shock factor 1, by feeding flies geldanamycin prevents dopaminergic neuronal cell death [36]. Recently, the expression of human *parkin* has been shown to suppress the loss of dopaminergic neurons induced by α -synuclein in *Drosophila* [37]. This model has proven to be an effective tool in the investigation of the biological basis of PD.

To investigate the role of *parkin* in the α -synuclein-based model of Parkinson's disease in *Drosophila*, we have characterized and expressed the *Drosophila* homologue of *parkin* in this model. Our results demonstrate that *parkin* can counteract the effects of α -synuclein on climbing activity and retinal degeneration.

Results

Characterization of *Drosophila melanogaster parkin*

The *Drosophila melanogaster parkin* homologue was identified through a search of the Berkeley *Drosophila* Genome Project (BDGP) utilizing the tBlastn search algorithm. The *parkin* gene is located on the left arm of the third chromosome, in the polytene chromosome section 78C within the genomic scaffolding region AE003593 (BDGP), and consists of 6 exons over 2.2 kb (Figure 1A). A search of the genome for additional *parkin* homologues revealed none. Our analysis confirmed the sequence of *parkin* to be identical to that reported by the BDGP (AY058754.1). Two potential initiation codons for the parkin protein are separated by 42 base pairs at the 5' region of the transcript. As the second potential start codon is preceded by CAAA, a match to the *Drosophila* Kozak consensus sequence (C/

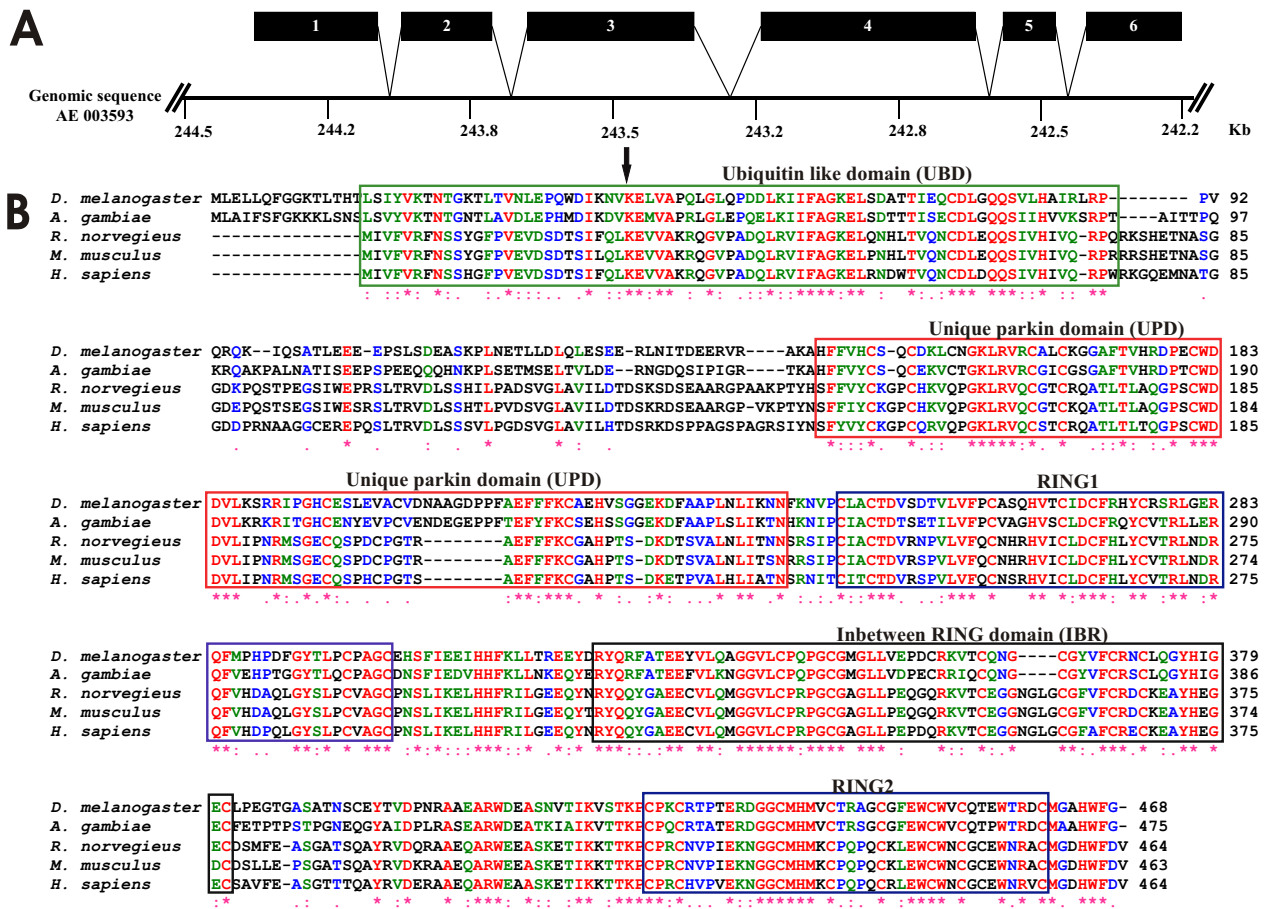


Figure 1
Dipteran and mammalian parkin proteins are well conserved. (A) Schematic representation of the *Drosophila melanogaster* parkin transcription unit and its location in the genomic scaffolding region AE003593. (B) ClustalW alignment of the *Drosophila melanogaster* parkin with homologues from *Anopheles gambiae*, *Rattus norvegicus*, *Mus musculus* and *Homo sapiens*. Highlighted are the Ubiquitin-like Domain (UBL) (green box); the Unique Parkin Domain (UPD) (red box); RING1 and RING2 (blue boxes); In-Between Ring Domain (IRB) (black box). "*" and red lettering indicates amino acids that are identical in all sequences in the alignment. "." and green lettering indicates conserved substitutions. "." and blue lettering indicates semi-conserved substitutions.

AA(A/C)ATG) of translation initiation [38], we have assigned this as the most likely start codon. Furthermore, of the preceding fourteen potential codons only two use preferred codons [39] (data not shown). The *Drosophila parkin* gene was reported by Greene and colleagues [40], while the current experiments were being conducted.

The parkin protein is well conserved

The *Drosophila melanogaster* parkin protein has been reported to be 42% identical to human parkin [40] (Fig-

ure 1B). Parkin protein homologues were identified from *Rattus norvegicus* (NM_020093.1) and *Mus musculus* (AB019558.1) via the tblastn algorithm of the National Center for Biotechnology Information (NCBI). Both the *R. norvegicus* and *M. musculus* homologues were found to have 44% identity and 60% similarity to *D. melanogaster* parkin when analysed by the blast2 algorithm (Figure 1B). In addition, we have determined that the *Anopheles gambiae* sequence XM316606.1 [41] is a homologue of parkin. Like *D. melanogaster*, the *A. gambiae* transcript has two

potential in-frame translation start sites. The Kozak sequence prior to the first ATG is very poor, however the second site closely resembles the consensus sequence and therefore it is very likely the start site. We determined that the theoretical *A. gambiae* parkin protein has 65% identity and 79% similarity to *D. melanogaster* parkin (Figure 1B). The parkin protein appears to be highly conserved at the amino acid sequence level.

Alignment of *D. melanogaster* parkin protein sequences with the *A. gambiae*, *R. norvegicus*, *M. musculus* and *H. sapiens* homologues reveals conservation of the protein throughout a number of characteristic domains, including the Ubiquitin-like Domain (UBL), the Unique Parkin Domain (UPD), the Really Interesting New Gene finger 1 (RING1) domain, the In-Between Ring (IBR) domain, and the RING2 domain (Figure 1B). In the amino-terminal region of the proteins, the first 15 amino acids are well conserved between *A. gambiae* and *D. melanogaster*, but absent in the mammalian proteins. The human UBL shows very high similarity (62%) to human ubiquitin [17]. Correspondingly the *Drosophila* UBL (Figure 1B, green box) was found to have 43% identity and 67% similarity to *Drosophila* ubiquitin (AAA29007; data not shown). The second highly conserved region is unique to parkin and has been termed the unique parkin domain (UPD) [42] (Figure 1B, red box). *D. melanogaster* and *A. gambiae* share a similar eight amino acid insertion in the UPD (Figure 1B). There are two RING-finger domains that are defined by the consensus sequence C-X₂-C-X_{9...39}-C-X_{1...3}-H-X_{2...3}-C/H-X₂-C-X_{4...48}-C-X₂-C where X can be any amino acid (Figure 1B, blue boxes) [43]. These RING-finger domains flank a cysteine-rich domain designated the In-Between Ring (IBR) domain (Figure 1B, black box) [44]. These three domains are responsible for binding to specific E2 ubiquitin conjugating enzymes [23,28,30]. Between the RING1 and the IBR domains there is an eighteen amino acid stretch of high conservation with the sequence (N/H)S(L/F)I(K/E)(E/D)(I/L)HHF(K/R)(L/I)LX(R/E)E(E/Q)Y. A 41 amino acid segment separates the IBR and RING2 domains, and while the first half of this segment is not well conserved the second half is highly conserved with the sequence AX(E/Q)ARW(D/E)XA(S/T)(N/K)X(T/A)IKX(S/T)TKP. The carboxy-terminus is well conserved and has the following sequence M(G/A)XHW(F/G/D)(-V), suggesting a possible conserved function for the tail of the protein. As parkin undergoes self-ubiquitination [28], conserved potential ubiquitination sites (lysine residues) were identified. There is a lysine residue that is completely conserved at K-42 of the dipterans and this corresponding residue is K-27 in mammals (Figure 1B, black arrow). The mouse and rat parkin homologues have been recently compared to *Drosophila* parkin [45], however a number of the above features were not discussed. Overall parkin appears to be highly con-

served between mammalian and dipteran species suggesting conservation of function among these species.

parkin suppresses degeneration of the ommatidial array in flies that express α -synuclein in the eye

We generated stable transgenic flies that can conditionally express parkin when the UAS/Gal4 expression system is utilized [46]. *In situ* hybridization was used to confirm parkin expression in transgenic *Drosophila* (data not shown). Expression of parkin was directed to the developing eye using the GMR-Gal4 transgene resulting in no obvious alteration of the eye (data not shown). *In vitro* and cell culture research suggests that parkin can prevent α -synuclein-induced toxicity [31,47]. Expression of human α -synuclein in the *Drosophila* eye causes premature deterioration of the retina [32]. To examine if parkin could prevent α -synuclein-induced degeneration, we co-expressed parkin with human α -synuclein in the developing eye. Cross-sections of the retinas of one-day-old flies that express α -synuclein appear to be intact, as previously described (Figure 2A) [32]. The retinas of one-day-old flies that express both α -synuclein and parkin also appear normal (Figure 2B,2C). As previously described, the retinas of thirty-day-old flies that express α -synuclein show signs of premature degeneration [32]. Degeneration of the normal architecture of the eye is apparent (Figure 2D, black arrows) and reflects the disruption of the normal placement and alignment of the photoreceptors and supporting cells. In contrast, thirty-day-old flies that express α -synuclein and parkin maintain their ommatidial arrays and morphology (Figure 2E,2F). This observation demonstrates that directed expression of parkin suppresses α -synuclein-dependent degeneration of the ommatidial array.

Retinal damage can be observed by examining an optical effect termed the pseudopupil, which is lost in aged flies that express α -synuclein [32]. We examined flies that co-express α -synuclein and parkin, and there appeared to be some retention of this optical effect compared with flies that express α -synuclein alone (data not shown). Scanning electron microscopy of eyes revealed no obvious deterioration of the surface in flies that express α -synuclein (Figure 3A and 3D) or flies that co-express α -synuclein and parkin (Figure 3B,3C,3E and 3F). Although α -synuclein causes degeneration of the ommatidial array, the external structure of the eye is unaffected.

Directed-expression of parkin to dopaminergic neurons does not affect climbing ability

Young wild-type adult *Drosophila* exhibit a strong negative geotaxis, which is increased by mechanical stimulation [48,49]. In order to measure climbing ability, flies are placed in a vial, gently tapped to the bottom and allowed to climb up the sides [32]. When parkin is expressed in the

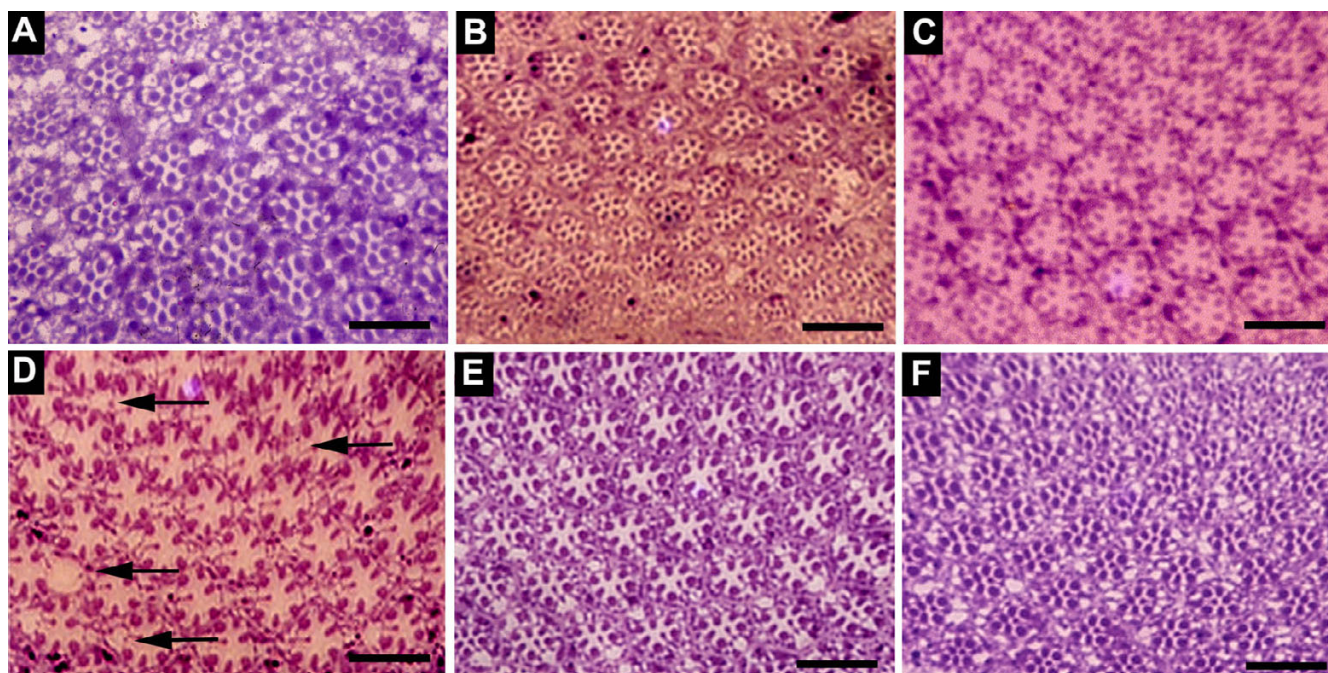


Figure 2

Expression of *parkin* suppresses α -synuclein-induced retinal degeneration. Flies that express α -synuclein with and without *parkin* were aged to 1 or 30 days old. They were fixed and embedded in epon. Tangential sections (0.5 μ m thick) of the retina were cut, stained with toluidine blue and examined by light microscopy. Panels A-C represent one-day-old flies and panels D-F represent thirty-day-old flies. Black arrows indicate degeneration of the ommatidial architecture. The genotypes are (A,D) $w^{1118}; UAS-\alpha\text{-synuclein}/GMR\text{-Gal4}$, (B,E) $w^{1118}; UAS-\alpha\text{-synuclein}/GMR\text{-Gal4}; UAS\text{-parkin}^{1.1/+}$, and (C,F) $w^{1118}; UAS-\alpha\text{-synuclein}/GMR\text{-Gal4}; UAS\text{-parkin}^{2.1/+}$. Scale bar is 15 μ m.

dopaminergic neurons, these flies do not show any change in their climbing ability over their life span when compared with controls (Figure 4A). In addition, expression of *parkin* in dopaminergic neurons does not alter life span (Figure 4B). These results demonstrate that *parkin* expression in the dopaminergic neurons has little effect upon climbing ability or life span.

***Parkin* suppresses α -synuclein induced loss of climbing ability**

Flies that express α -synuclein, specifically in their dopaminergic neurons through the activity of the *Ddc-Gal4* transgene, were assayed for their climbing ability over their life span, and were found to prematurely lose their climbing ability (Figure 5A). Co-expression of *parkin* with α -synuclein suppresses this premature loss of climbing ability (Figure 5A). This suggests that *parkin* can act to prevent the deleterious effects of α -synuclein expression.

Aging assays were carried out in tandem with the climbing assays described above in order to account for changes in climbing ability as a result of premature senescence.

Median survival age for flies that express α -synuclein is similar to flies that co-express α -synuclein with *parkin* (Figure 5B). This indicates that differences in climbing ability were not due to differences in life span.

Discussion

Drosophila parkin has a high degree of similarity to the mammalian and *A. gambiae* homologues. The five characteristic domains of the parkin protein, the Ubiquitin-like Domain (UBL), Unique Parkin Domain (UPD), Really Interesting New Gene finger 1 (RING1) domain, In-Between Ring (IBR) domain and RING2 all show a high degree of similarity. In addition, the two dipterans, *D. melanogaster* and *A. gambiae*, have a highly conserved extra segment of 15 amino acids at the amino-terminal of the protein. The regions between the three carboxy-terminus domains are also highly conserved, which may indicate conservation of function. Patients with ARJP caused by mutations in the UBL domain exhibit signs of lost substrate binding [23]. The UBL domain also appears to be involved in binding the Rpn10 subunit of the 26S proteasome as the R42P amino acid substitution in this domain

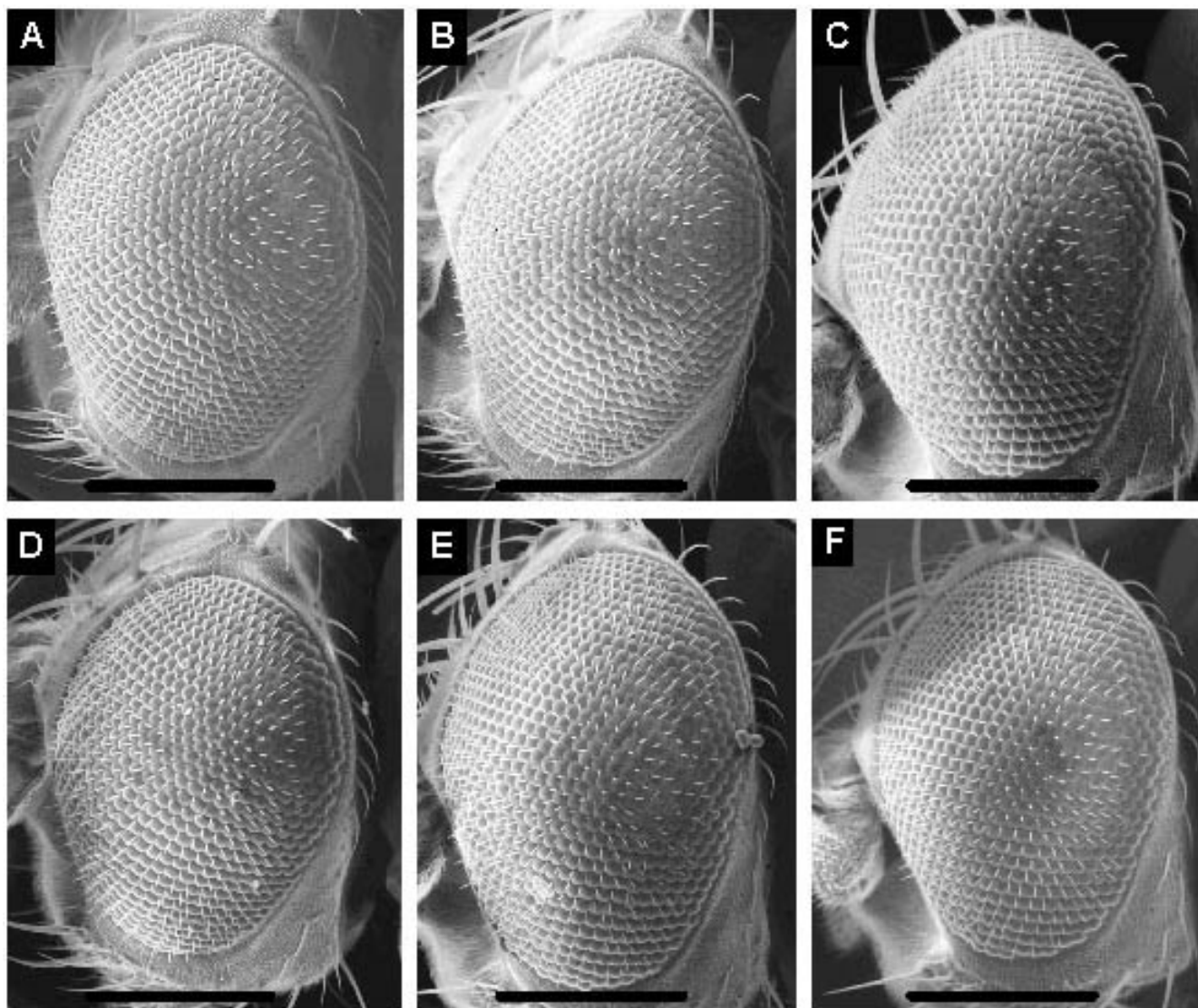


Figure 3

Expression of α -synuclein with and without parkin does not affect the external morphology of the eye. Scanning electron microscopy of flies that express α -synuclein with and without parkin shows no change in their external morphology over thirty days. Panels A-C represent one-day-old flies and panels D-F represent thirty-day-old flies. The genotypes are (A,D) w^{1118} ; $UAS-\alpha$ -synuclein/ $GMR-Gal4$, (B,E) w^{1118} ; $UAS-\alpha$ -synuclein/ $GMR-Gal4$; $UAS-parkin^{1.1/+}$, and (C,F) w^{1118} ; $UAS-\alpha$ -synuclein/ $GMR-Gal4$; $UAS-parkin^{2.1/+}$. Scale bar indicates 200 μ m.

was identified in ARJP patients and results in impaired proteasome binding of parkin (Figure 6) [50]. Alterations of the RING1, RING2 and IBR domains of parkin result in an almost complete loss of ubiquitin conjugating enzyme H7 (UbcH7)-binding activity, which indicates that all three domains are functionally important in recruiting specific E2 ubiquitin conjugating enzymes [51]. The RING1 and RING2 domains are thought to collaborate to trap UbcH7 (Figure 6) [51]. Amino acid substitutions in

the RING1 domain change the subcellular localization of parkin and enhance cytoplasmic and nuclear inclusions [52]. In addition, the amino acid substitutions C289G and C418R, which replace conserved cysteine residues in the RING domains, significantly decrease the solubility of parkin in cells [53]. Ubiquitination generally occurs near the amino-terminus of proteins and ubiquitin monomers are attached to lysine residues [25]. Several lysine residues are absolutely conserved, including one in the UBL and

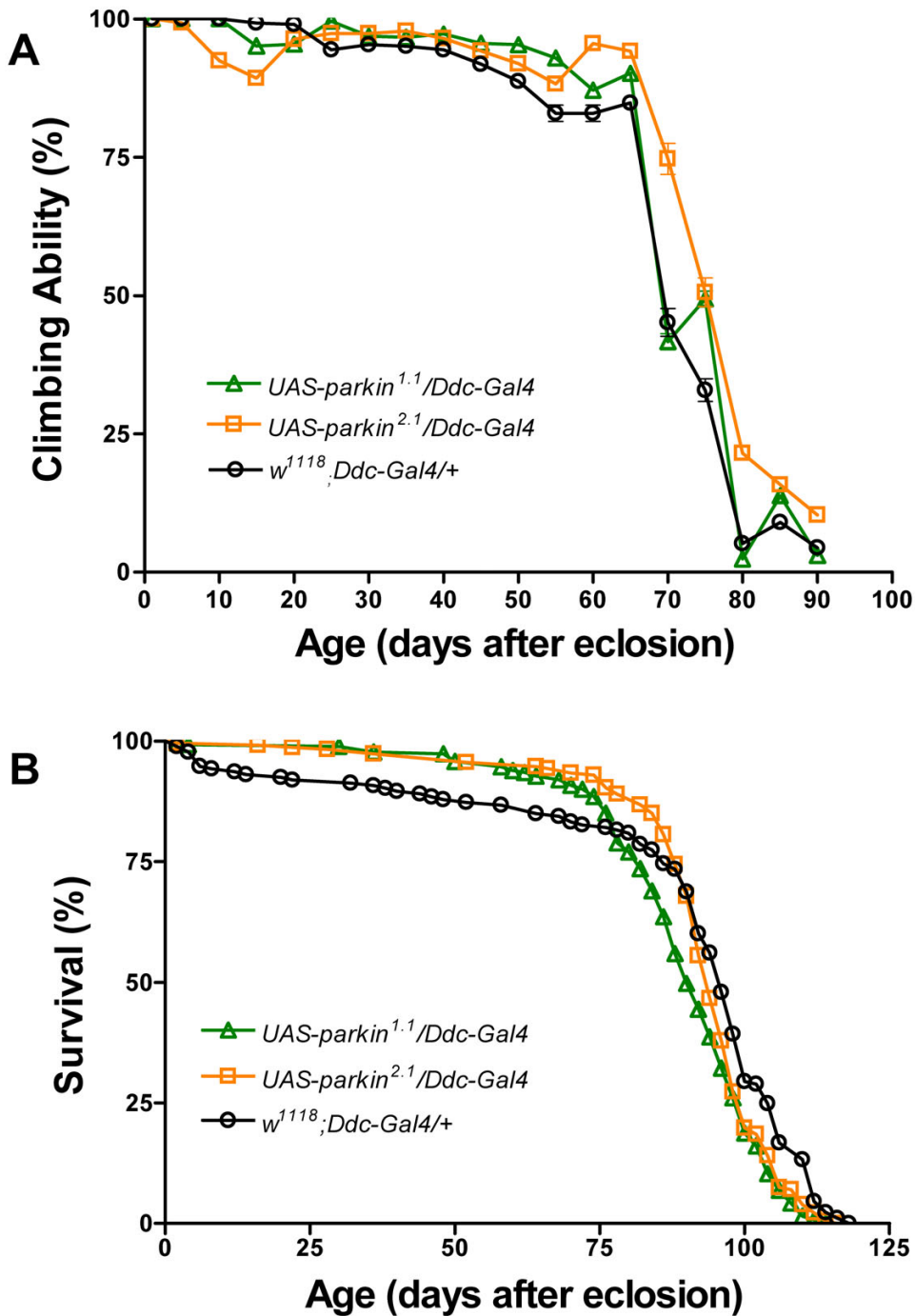


Figure 4

Expression of *parkin* does not affect climbing ability or life span. Panel A – Climbing ability of flies that express *parkin* does not differ from control flies. Genotypes are *w¹¹¹⁸*; *UAS-parkin^{1.1}/Ddc-Gal4* (green open triangle), *w¹¹¹⁸*; *UAS-parkin^{2.1}/Ddc-Gal4* (orange open square) and *w¹¹¹⁸*; *Ddc-Gal4/+* (black open circles). The error bars show the standard error of the mean of twenty trials at each point. Please note that the error bars are mostly within the symbols. B – The life span of flies that express *parkin* does not differ from the control. The genotypes are marked the same as in panel A. The mortality of flies was examined every two days.

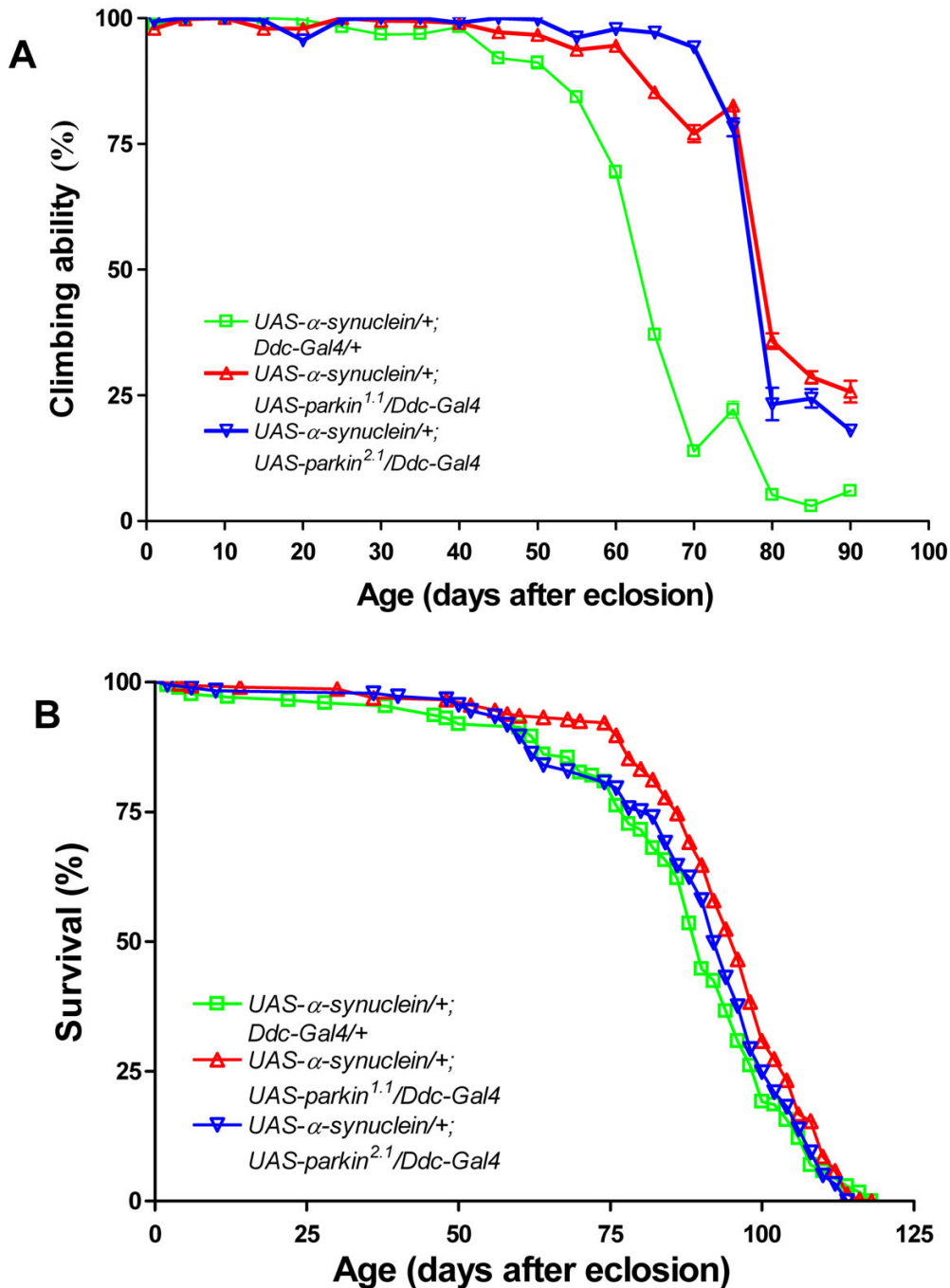


Figure 5
Expression of *parkin* suppresses α -synuclein-induced loss of climbing ability. Panel A – Aged flies that express *parkin* and α -synuclein climb significantly better than flies that express α -synuclein ($P < 0.001$, one-way analysis of variance with supplementary Newman-Keuls test). Genotypes are $w^{1118}; UAS-\alpha\text{-synuclein}/+; Ddc-Gal4/+$ (green open square), $w^{1118}; UAS-\alpha\text{-synuclein}/+; UAS-parkin^{1.1}/Ddc-Gal4$ (red open triangle), $w^{1118}; UAS-\alpha\text{-synuclein}/+; UAS-parkin^{2.1}/Ddc-Gal4$ (blue upside down open triangle). The error bars show the standard error of the mean of twenty trials at each point. Please note that the error bars are mostly within the symbols. B – The life span of flies that express α -synuclein with and without *parkin* does not differ. The genotypes are marked the same as in panel A.

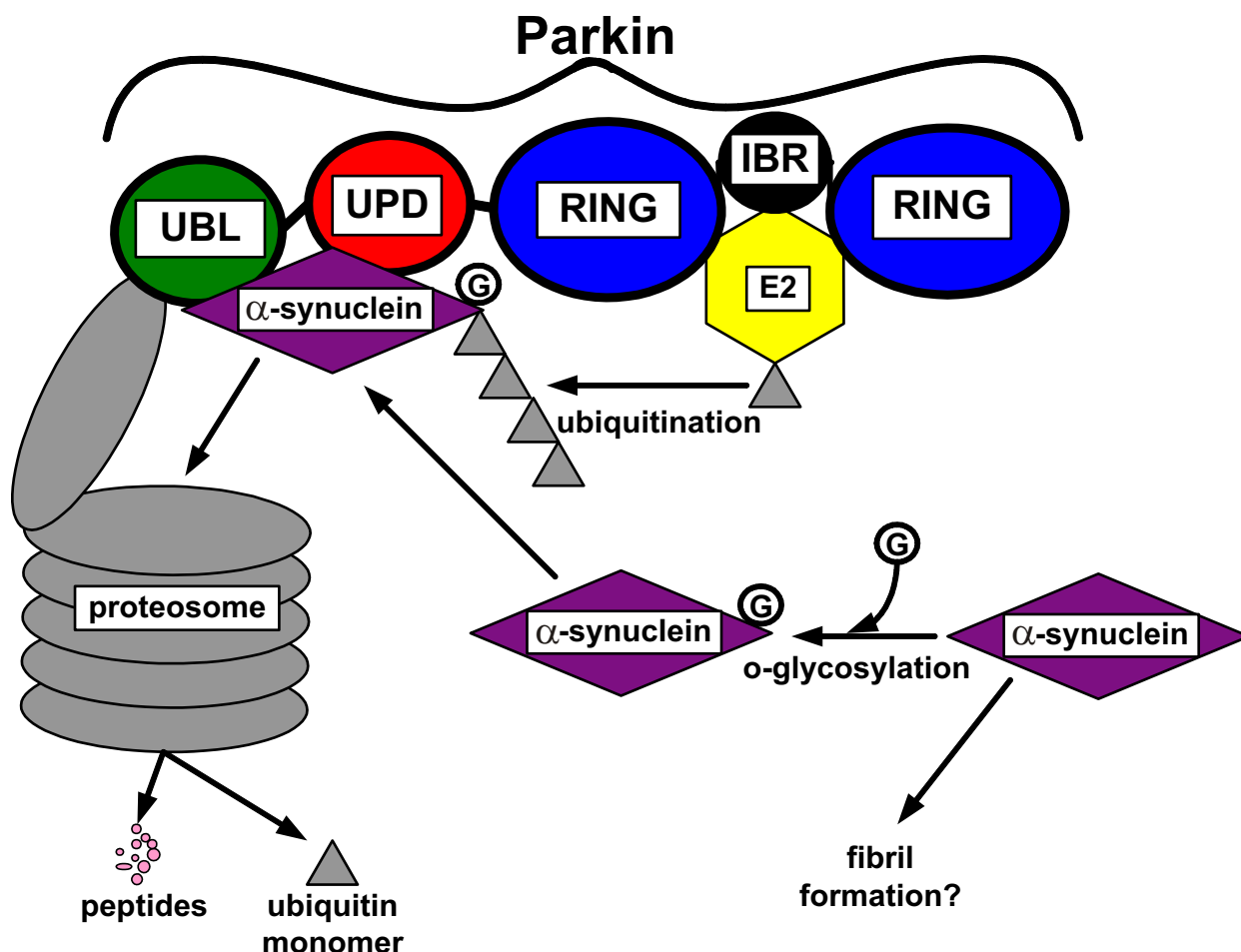


Figure 6
Model of parkin directed ubiquitination of α -synuclein. The parkin protein consists of two functionally distinct regions. The UBL/UPD region binds target proteins such as glycosylated α -synuclein. The RING-box (RING1-IBR-RING2) region recruits specific E2 ubiquitin conjugating enzymes, which add ubiquitin monomers to the target protein. In addition to substrate binding the UBL domain interacts with the proteasome. Ubiquitin tagged α -synuclein is directed to the proteasome and degraded into polypeptides and ubiquitin monomers. UBL – Ubiquitin-like Domain, UPD – Unique Parkin Domain, RING1 or 2 – Really Interesting New Gene finger 1 or 2 domain, IBR – In-Between Ring domain.

two in the UPD, and these may be targets for ubiquitination. The existence of orthologues of mammalian *parkin* in invertebrates but not plants nor fungi [54] suggest an animal specific function for *parkin* activity. The highly conserved protein domains and sub-domains suggest the probable conservation of each domain's function, and given the high degree of similarity we suggest that the function of the *Drosophila* parkin protein is similar to that of the human parkin protein.

We demonstrate that the directed expression of *parkin* in the dopaminergic neurons and developing eyes leads to no obvious adverse effects. The unaltered phenotype

observed when *parkin* is expressed in dopaminergic neurons is likely due to substrate specificity and to the ability of the parkin protein to target itself for degradation [28]. Under conditions of over-expression, parkin does not seem to target and tag essential proteins for degradation promiscuously. This may represent an excellent fail-safe mechanism the cell has developed to balance the levels of both parkin and its substrates.

The *Drosophila* model of ADPD has been used to examine the effect of various pharmacological agents [34,36] and other genetic aspects of the disease [35,37]. We expressed *parkin* along with α -synuclein and found the suppression

of α -synuclein-induced retinal degeneration and premature loss of climbing. These results indicate that parkin may target α -synuclein for degradation *in vivo* (Figure 6). Although coimmuno-precipitation studies have shown that parkin does not interact with or ubiquitinate non-modified α -synuclein [29], parkin will ubiquitinate O-glycosylated α -synuclein [26]. Since we show suppression of the α -synuclein-induced phenotype, we believe that ectopically expressed α -synuclein is modified in *Drosophila*, enabling its ubiquitination by parkin. The modification of α -synuclein and subsequent ubiquitination by parkin is presented in Figure 6.

In order to select rational potential therapeutic agents, the molecular mechanisms behind disease progression must be characterized. Gene function studies with homologues of disease-causing genes in model organisms have been made practical through the advent of genome projects. Over-expression of *parkin* has no apparent adverse consequences and it suppresses the α -synuclein-induced PD symptoms in *Drosophila*. If this relationship is conserved in humans, we suggest that up-regulation of *parkin* should be a viable treatment for PD, and the selection of therapeutic strategies should be directed towards this end.

Conclusions

Our experiments demonstrate that the directed expression of the *parkin* gene counteracts the PD-like symptoms in the α -synuclein-induced *Drosophila* model of PD. Manipulation of the ubiquitin/proteasome degradation pathway in such a specific manner apparently remedies the toxic accumulation of α -synuclein. This study demonstrates the success of selective targeting of toxic proteins for degradation as an approach to address neurodegenerative conditions such as Parkinson's disease. The development of therapies that regulate *parkin* expression or parkin protein activity may be crucial in the treatment of PD.

Methods

Bioinformatic and sequence analysis

The *Drosophila melanogaster* homologue of *parkin* was identified through a search of the Berkeley *Drosophila* Genome Project [55] queried with the human parkin amino acid sequence, AB009973.1. A clone of the *Drosophila parkin* cDNA (SD01679) was obtained from Research Genetics [56], sub-cloned and sequenced (Cortec DNA Service Laboratories Inc., Kingston, ON, Canada). The intron/exon map was constructed by comparison of the cDNA to the corresponding genomic region. Other homologues of *parkin* were identified with the tblastn algorithm [57] of the National Center for Biotechnology Information (NCBI) using the theoretical translation of SD01679 cDNA. The blast2 sequence comparison program (NCBI) was used to compare the *R. norvegicus* (NM_020093.1), *M. musculus* (AB019558.1) and

A. gambiae (XM316606.1) sequences individually with the *D. melanogaster* parkin protein sequence [57]. The multi-alignment of the five parkin homologues from *D. melanogaster*, *A. gambiae*, *R. norvegicus*, *M. musculus* and *H. sapiens* was constructed by editing the results from the multialign ClustalW program from the Pôle Bio-Informatique Lyonnaise [58,59].

Fly stocks and culture

Dr. M. Feany (Harvard Medical School) and Dr. J. Hirsh (University of Virginia) generously provided *UAS- α -synuclein* [32] and *Ddc-Gal4^{4.36}* flies [60] respectively. The *GMR-Gal4* flies [61] were obtained from the Bloomington *Drosophila* Stock Center at Indiana University. A *BglIII/XhoI* fragment containing the *parkin* cDNA (SD01679) was subcloned into the *pUAST* vector to generate the *UAS-parkin* transgene. Two independent transgenic lines were generated using heat shock π as a source of transposase and standard injection techniques into *w¹¹¹⁸* embryos. Double transgenic lines with *UAS- α -synuclein*;*UAS-parkin^{1.1}* and *UAS- α -synuclein*;*UAS-parkin^{2.1}* were generated using standard techniques. To drive expression of the transgenes, *Ddc-Gal4* (for expression in the dopaminergic neurons) or *GMR-Gal4* (for expression in the eye) homozygous females were crossed to *w¹¹¹⁸* males (control) or *UAS- α -synuclein* with or without *UAS-parkin^{1.1}* or *UAS-parkin^{2.1}*. All flies were cultured on standard cornmeal/yeast/molasses/agar media at 25°C.

In situ hybridization analysis

Third instar larvae were dissected in PBS, fixed in 4% formaldehyde and dehydrated in methanol and ethanol. The carcasses were probed with a DIG labelled anti-sense *parkin* RNA probe generated from a linear cut plasmid containing the entire *parkin* cDNA using the Roche Applied Science DIG Northern starter kit and reduced in size with carbonate buffer treatment. To visualize *parkin* RNA alkaline phosphatase labelled anti-DIG anti-bodies were incubated with the carcasses and subjected to alkaline phosphate treatment as per the Roche Applied Science DIG application manual. The eye discs were dissected out completely and examined under light microscopy. The genotypes of the larvae examined were 1) *w¹¹¹⁸*; 2) *w¹¹¹⁸*; *GMR-Gal4/+*; *UAS-parkin^{1.1}/+*; and 3) *w¹¹¹⁸*; *GMR-Gal4/+*; *UAS-parkin^{2.1}/+* and at least ten of each genotype were examined.

Aging analysis

Adult males were collected under gaseous carbon dioxide anaesthetic and aged in small groups (~10 or less per vial) upon standard cornmeal/yeast/molasses/agar media at 25°C in upright standard plastic shell vials. The flies were scored for viability every two to three days and transferred to fresh media without anaesthesia [62]. The numbers of individuals aged are as follows: *UAS- α -synuclein/+*; *Ddc-*

Gal4/+ = 191; *UAS- α -synuclein/+*; *UAS-parkin^{2.1}/Ddc-Gal4* = 292; *UAS- α -synuclein/+*; *UAS-parkin^{1.1}/Ddc-Gal4* = 204; *w¹¹¹⁸*; *Ddc-Gal4/+* = 173; *UAS-parkin^{1.1}/Ddc-Gal4* = 262; and *UAS-parkin^{2.1}/Ddc-Gal4* = 227.

Locomotion assay

Flies were assayed for their ability to climb as described by Feany and Bender [32]. Every five days, forty male flies from a cohort of flies were assayed for their ability to climb six centimetres in eighteen seconds in a sterile plastic vial. Twenty trials were carried out for each time point. Data shown represent the results from flies tested over ninety days.

Scanning electron microscopy of the *Drosophila* eye

Flies were of each genotype [1] *w¹¹¹⁸*; *UAS- α -synuclein/GMR-Gal4*; 2) *w¹¹¹⁸*; *UAS- α -synuclein/GMR-Gal4*; *UAS-parkin^{1.1}/+*; and 3) *w¹¹¹⁸*; *UAS- α -synuclein/GMR-Gal4*; *UAS-parkin^{2.1}/+*] aged and frozen in a -70°C ethanol bath. Whole flies were mounted, desiccated overnight and coated in gold before photography at 150 times magnification with a Hitachi S-570 SEM as per standard methods. For each condition at least six flies were analysed.

Histological examination of *Drosophila* adult retinas

Adult flies [1] *w¹¹¹⁸*; *UAS- α -synuclein/GMR-Gal4*; 2) *w¹¹¹⁸*; *UAS- α -synuclein/GMR-Gal4*; *UAS-parkin^{1.1}/+*; and 3) *w¹¹¹⁸*; *UAS- α -synuclein/GMR-Gal4*; *UAS-parkin^{2.1}/+*] were aged (one or thirty days after eclosion), fixed in Karnovsky's fixative and embedded in epon. Tangential retinal sections were prepared at a thickness of 0.5 μ m and stained with toluidine blue, examined by light microscopy and photographed at magnification of 800 times.

Authors' contributions

AFMH conducted the molecular and bioinformatic analyses, genetic manipulation, transgenic generation, sample preparation, light microscopy, scanning electron microscopy, aging bioassays and behavioural experiments as well as designing the experiments and drafting the manuscript. BES initiated the bioinformatic investigation of the *Drosophila* parkin gene, collaborated with experimental design, participated in the creation of transgenics, edited the manuscript, as well as acting as supervisor and primary investigator.

Acknowledgements

This research was funded by the Natural Sciences and Engineering Research Council of Canada and the Dean of Science of Memorial University of Newfoundland (start-up funds) to BES. AFMH was partially funded by a Graduate Student Demonstratorship. We thank E. Lloyd Smith and Bernard Healy (Faculty of Engineering, Memorial University of Newfoundland) for design and production of the climbing assay device. We thank Lisa Lee and Roy Ficken (Department of Biology, Memorial University of Newfoundland) for help with SEM and photography respectively, and Kate Williams and Howard Gladney (Faculty of Medicine, Memorial University of Newfound-

land) for help with sectioning. We thank John P. Phillips (Department of Molecular Biology and Genetics, University of Guelph) for advice on matters of longevity. We thank Jamie Kramer for advice on *in situ* hybridization and Peter Earle for help with citation software. We also thank Dr. Helene Volkoff, Dr. H. Dawn Marshall, Lisa Saunders and Justin Moores for comments on the manuscript.

References

1. Parkinson J: **An essay on the Shaking Palsy.** *A Manual of Diseases of the Nervous System* 2nd edition. Edited by: Gowers W R. Philadelphia, Blakiston; 1817:6366-6657.
2. Spacey SD, Wood NW: **The genetics of Parkinson's disease.** *Curr Opin Neurol* 1999, **12**:427-432.
3. Dawson TM: **New Animal Models for Parkinson's Disease.** *Cell* 2000, **101**:115-118.
4. Giasson BI, Lee VM: **Parkin and the molecular pathways of Parkinson's disease.** *Neuron* 2001, **31**:885-888.
5. Lansbury P. T., Jr., Brice A: **Genetics of Parkinson's disease and biochemical studies of implicated gene products.** *Curr Opin Cell Biol* 2002, **14**:653-660.
6. de Silva HR, Khan NL, Wood NW: **The genetics of Parkinson's disease.** *Curr Opin Genet Dev* 2000, **10**:292-298.
7. Mizuno Y, Hattori N, Mori H, Suzuki T, Tanaka K: **Parkin and Parkinson's disease.** *Curr Opin Neurol* 2001, **14**:477-482.
8. Polymeropoulos MH, Higgins JJ, Golbe LI, Nussbaum RL: **Mapping of a gene for Parkinson's disease to chromosome 4q21-q23.** *Science* 1996, **274**:1197-1198.
9. Polymeropoulos MH, Lavedan C, Leroy E, Ide SE, Dehejia A, Dutra A, Pike B, Root H, Rubenstein R, Boyer R, Stenroos ES, Chandrasekharappa S, Athanassiadou A, Papapetropoulos T, Johnson WG, Lazzarini AM, Duvoisin RC, Di Iorio G, Golbe LI, Nussbaum RL: **Mutation in the alpha-Synuclein Gene Identified in Families with Parkinson's Disease.** *Science* 1997, **276**:2045-2047.
10. Jakes R, Spillantini MG, Goedert M: **Identification of two distinct synucleins from human brain.** *FEBS Letters* 1994, **345**:27-32.
11. Clayton DF, George JM: **The synucleins: a family of proteins involved in synaptic function, plasticity, neurodegeneration and disease.** *Trends Neurosci* 1998, **21**:249-254.
12. Perez RG, Waymire JC, Lin E, Liu JJ, Guo F, Zigmund MJ: **A role for alpha-synuclein in the regulation of dopamine biosynthesis.** *J Neurosci* 2002, **22**:3090-3099.
13. Baptista MJ, O'Farrell C, Daya S, Ahmad R, Miller DW, Hardy J, Farrer MJ, Cookson MR: **Co-ordinate transcriptional regulation of dopamine synthesis genes by alpha-synuclein in human neuroblastoma cell lines.** *J Neurochem* 2003, **85**:957-968.
14. Conway KA, Harper JD, Lansbury P: **Accelerated *in vitro* fibril formation by a mutant alpha-synuclein linked to early-onset Parkinson disease.** *Nat Med* 1998, **4**:1318-1320.
15. Conway KA, Harper JD, Lansbury PT: **Fibrils formed *in vitro* from alpha-synuclein and two mutant forms linked to Parkinson's disease are typical amyloid.** *Biochemistry* 2000, **39**:2552-2563.
16. Conway KA, Lee SJ, Rochet JC, Ding TT, Williamson RE, Lansbury P. T., Jr.: **Acceleration of oligomerization, not fibrillization, is a shared property of both alpha-synuclein mutations linked to early-onset Parkinson's disease: implications for pathogenesis and therapy.** *Proc Natl Acad Sci USA* 2000, **97**:571-576.
17. Kitada T, Asakawa S, Hattori N, Matsumine H, Yamamura Y, Minoshima S, Yokochi M, Mizuno Y, Shimizu N: **Mutations in the parkin gene cause autosomal recessive juvenile parkinsonism.** *Nature* 1998, **392**:605-608.
18. Nisipeanu P, Inzelberg R, Blumen SC, Carasso RL, Hattori N, Matsumine H, Mizuno Y: **Autosomal-recessive juvenile parkinsonism in a Jewish Yemenite kindred: mutation of Parkin gene.** *Neurology* 1999, **53**:1602-1604.
19. Munoz E, Pastor P, Marti MJ, Oliva R, Tolosa E: **A new mutation in the parkin gene in a patient with atypical autosomal recessive juvenile parkinsonism.** *Neurosci Lett* 2000, **289**:66-68.
20. Ishikawa A, Tsuji S: **Clinical analysis of 17 patients in 12 Japanese families with autosomal-recessive type juvenile parkinsonism.** *Neurology* 1996, **47**:160-166.
21. Mori H, Kondo T, Yokochi M, Matsumine H, Nakagawa-Hattori Y, Miyake T, Suda K, Mizuno Y: **Pathologic and biochemical studies of juvenile parkinsonism linked to chromosome 6q.** *Neurology* 1998, **51**:890-892.

22. Hayashi S, Wakabayashi K, Ishikawa A, Nagai H, Saito M, Maruyama M, Takahashi T, Ozawa T, Tsuji S, Takahashi H: **An autopsy case of autosomal-recessive juvenile parkinsonism with a homozygous exon 4 deletion in the parkin gene.** *Mov Disord* 2000, **15**:884-888.
23. Shimura H, Hattori N, Kubo Si., Mizuno Y, Asakawa S, Minoshima S, Shimizu N, Iwai K, Chiba T, Tanaka K, Suzuki T: **Familial Parkinson disease gene product, parkin, is a ubiquitin-protein ligase.** *Nat Gen* 2000, **25**:302-305.
24. Hershko A, Ciechanover A: **The Ubiquitin System.** *Ann Rev Biochem* 1998, **67**:425-479.
25. Pickart CM: **Mechanisms underlying ubiquitination.** *Annu Rev Biochem* 2001, **70**:503-533.
26. Shimura H, Schlossmacher MG, Hattori N, Frosch MP, Trockenbacher A, Schneider R, Mizuno Y, Kosik KS, Selkoe DJ: **Ubiquitination of a new form of alpha-synuclein by parkin from human brain: implications for Parkinson's disease.** *Science* 2001, **293**:263-269.
27. Imai Y, Soda M, Inoue H, Hattori N, Mizuno Y, Takahashi R: **An unfolded putative transmembrane polypeptide, which can lead to endoplasmic reticulum stress, is a substrate of Parkin.** *Cell* 2001, **105**:891-902.
28. Zhang Y, Gao J, Chung KK, Huang H, Dawson VL, Dawson TM: **Parkin functions as an E2-dependent ubiquitin-protein ligase and promotes the degradation of the synaptic vesicle-associated protein, CDCrel-1.** *Proc Natl Acad Sci U S A* 2000, **97**:13354-13359.
29. Chung KK, Zhang Y, Lim KL, Tanaka Y, Huang H, Gao J, Ross CA, Dawson VL, Dawson TM: **Parkin ubiquitinates the alpha-synuclein-interacting protein, synphilin-1: implications for Lewy-body formation in Parkinson disease.** *Nat Med* 2001, **7**:1144-1150.
30. Imai Y, Soda M, Takahashi R: **Parkin Suppresses Unfolded Protein Stress-induced Cell Death through Its E3 Ubiquitin-protein Ligase Activity.** *J Biol Chem* 2000, **275**:35661-35664.
31. Petruccielli L, O'Farrell C, Lockhart PJ, Baptista M, Kehoe K, Vink L, Choi P, Wolozin B, Farrer M, Hardy J, Cookson MR: **Parkin protects against the toxicity associated with mutant alpha-synuclein: proteasome dysfunction selectively affects catecholaminergic neurons.** *Neuron* 2002, **36**:1007-1019.
32. Feany MB, Bender VVV: **A Drosophila model of Parkinson's disease.** *Nature* 2000, **404**:394-398.
33. Scherzer CR, Jensen RV, Gullans SR, Feany MB: **Gene expression changes presage neurodegeneration in a Drosophila model of Parkinson's disease.** *Hum Mol Genet* 2003, **12**:2457-2466.
34. Pendleton RG, Parvez F, Sayed M, Hillman R: **Effects of pharmacological agents upon a transgenic model of Parkinson's disease in Drosophila melanogaster.** *J Pharmacol Exp Ther* 2002, **300**:91-96.
35. Auluck PK, Chan HY, Trojanowski JQ, Lee VM, Bonini NM: **Chaperone suppression of alpha-synuclein toxicity in a Drosophila model for Parkinson's disease.** *Science* 2002, **295**:865-868.
36. Auluck PK, Bonini NM: **Pharmacological prevention of Parkinson disease in Drosophila.** *Nat Med* 2002, **8**:1185-1186.
37. Yang Y, Nishimura I, Imai Y, Takahashi R, Lu B: **Parkin suppresses dopaminergic neuron-selective neurotoxicity induced by Pael-R in Drosophila.** *Neuron* 2003, **37**:911-924.
38. Cavener DR: **Comparison of the consensus sequence flanking translational start sites in Drosophila and vertebrates.** *Nucleic Acids Res* 1987, **15**:1353-1361.
39. Moriyama EN, Powell JR: **Codon usage bias and tRNA abundance in Drosophila.** *J Mol Evol* 1997, **45**:514-523.
40. Greene JC, Whitworth AJ, Kuo I, Andrews LA, Feany MB, Pallanck LJ: **Mitochondrial pathology and apoptotic muscle degeneration in Drosophila parkin mutants.** *Proc Natl Acad Sci U S A* 2003, **100**:4078-4083.
41. Holt RA, Subramanian GM, Halpern A, Sutton GG, Charlab R, Nusskern DR, Wincker P, Clark AG, Ribeiro JM, Wides R, Salzberg SL, Lof-tus B, Yandell M, Majoros WH, Rusch DB, Lai Z, Kraft CL, Abril JF, Anthouard V, Arensburger P, Atkinson PV, Baden H, de Berardinis V, Baldwin D, Benes V, Biedler J, Blass C, Bolanos R, Boscos D, Barnstead M, Cai S, Center A, Chaturvedi K, Christophides GK, Chrystal MA, Clamp M, Cravchik A, Curwen V, Dana A, Delcher A, Dew I, Evans CA, Flanigan M, Grundschober-Freimoser A, Friedli L, Gu Z, Guan P, Guigo R, Hillenmeyer ME, Hladun SL, Hogan JR, Hong YS, Hoover J, Jaillon O, Ke Z, Kodira K, Kokoza E, Koutsos A, Letunic I, Levitsky A, Liang Y, Lin JJ, Lobo NF, Lopez JR, Malek JA, McIntosh TC, Meister S, Miller J, Mobarry C, Mongin E, Murphy SD, O'Brochta DA, Pfannkoch C, Qi R, Regier MA, Remington K, Shao H, Sharakhova MV, Sitter CD, Shetty J, Smith TJ, Strong R, Sun J, Thomasova D, Ton LQ, Topalis P, Tu Z, Unger MF, Walenz B, Wang A, Wang J, Wang M, Wang X, Woodford KJ, Wortman JR, Wu M, Yao A, Zdobnov EM, Zhang H, Zhao Q, Zhao S, Zhu SC, Zhimulev I, Coluzzi M, della Torre A, Roth CW, Louis C, Kalush F, Mural RJ, Myers EW, Adams MD, Smith HO, Broder S, Gardner MJ, Fraser CM, Birney E, Bork P, Brey PT, Venter JC, Weissenbach J, Kafatos FC, Collins FH, Hoffman SL: **The genome sequence of the malaria mosquito Anopheles gambiae.** *Science* 2002, **298**:129-149.
42. Kahle PJ, Leimer U, Haass C: **Does failure of parkin-mediated ubiquitination cause juvenile parkinsonism?** *Trends Biochem Sci* 2000, **25**:524-527.
43. Freemont PS: **RING for destruction?** *Curr Biol* 2000, **10**:R84-7.
44. Morett E, Bork P: **A novel transactivation domain in parkin.** *Trends Biochem Sci* 1999, **24**:229-231.
45. Bae YJ, Park KS, Kang SJ: **Genomic organization and expression of parkin in Drosophila melanogaster.** *Exp Mol Med* 2003, **35**:393-402.
46. Brand AH, Perrimon N: **Targeted gene expression as a means of altering cell fates and generating dominant phenotypes.** *Development* 1993, **118**:401-415.
47. Oluwatosin-Chigbu Y, Robbins A, Scott CW, Arriza JL, Reid JD, Zysk JR: **Parkin suppresses wild-type alpha-synuclein-induced toxicity in SHSY-5Y cells.** *Biochem Biophys Res Commun* 2003, **309**:679-684.
48. Le Bourg E, Lints FA: **Hypergravity and aging in Drosophila melanogaster. 4. Climbing activity.** *Gerontology* 1992, **38**:59-64.
49. Miquel J, Lundgren PR, Bensch KG, Atlan H: **Effects of temperature on the life span, vitality and fine structure of Drosophila melanogaster.** *Mech Ageing Dev* 1976, **5**:347-370.
50. Sakata E, Yamaguchi Y, Kurimoto E, Kikuchi J, Yokoyama S, Yamada S, Kawahara H, Yokosawa H, Hattori N, Mizuno Y, Tanaka K, Kato K: **Parkin binds the Rpn10 subunit of 26S proteasomes through its ubiquitin-like domain.** *EMBO Rep* 2003, **4**:301-306.
51. Tanaka K, Suzuki T, Chiba T, Shimura H, Hattori N, Mizuno Y: **Parkin is linked to the ubiquitin pathway.** *J Mol Med* 2001, **79**:482-494.
52. Cookson MR, Lockhart PJ, McLendon C, O'Farrell C, Schlossmacher M, Farrer MJ: **RING finger 1 mutations in Parkin produce altered localization of the protein.** *Hum Mol Genet* 2003, **12**:2957-2965.
53. Gu WJ, Corti O, Araujo F, Hampe C, Jacquier S, Lucking CB, Abbas N, Duyckaerts C, Rooney T, Pradier L, Ruberg M, Brice A: **The C289G and C418R missense mutations cause rapid sequestration of human Parkin into insoluble aggregates.** *Neurobiol Dis* 2003, **14**:357-364.
54. Marin I, Ferrus AP: **Comparative genomics of the RBR family, including the Parkinson's disease-related gene parkin and the genes of the ariadne subfamily.** *Mol Biol Evol* 2002, **19**:2039-2050.
55. <http://www.fruitfly.org/blast>.
56. Stapleton M, Carlson J, Brokstein P, Yu C, Champe M, George R, Guarin H, Kronmiller B, Pacleb J, Park S, Wan K, Rubin GM, Celniker SE: **A Drosophila full-length cDNA resource.** *Genome Biol* 2002, **3**:RESEARCH0080.
57. Altschul SF, Madden TL, Schaffer AA, Zhang J, Zhang Z, Miller W, Lipman DJ: **Gapped BLAST and PSI-BLAST: a new generation of protein database search programs.** *Nucleic Acids Res* 1997, **25**:3389-3402.
58. <http://pbil.univ-lyon1.fr/>.
59. Thompson JD, Higgins DG, Gibson TJ: **CLUSTAL W: improving the sensitivity of progressive multiple sequence alignment through sequence weighting, position-specific gap penalties and weight matrix choice.** *Nucleic Acids Res* 1994, **22**:4673-4680.
60. Li H, Chaney S, Roberts IJ, Forte M, Hirsh J: **Ectopic G-protein expression in dopamine and serotonin neurons blocks cocaine sensitization in Drosophila melanogaster.** *Curr Biol* 2000, **10**:211-214.
61. Freemant M: **Iterative use of the EGF receptor triggers differentiation of all cell types in the Drosophila eye.** *Cell* 1996, **87**:651-660.
62. Staveley BE, Phillips JP, Hilliker AJ: **Phenotypic consequences of copper-zinc superoxide dismutase overexpression in Drosophila melanogaster.** *Genome* 1990, **33**:867-872.