



Leukocyte engagement of fibrin(ogen) via the integrin receptor $\alpha_M\beta_2$ /Mac-1 is critical for host inflammatory response in vivo

Matthew J. Flick,¹ XinLi Du,¹ David P. Witte,¹ Markéta Jiroušková,² Dmitry A. Soloviev,³ Steven J. Busuttill,³ Edward F. Plow,³ and Jay L. Degen¹

¹Children's Hospital Research Foundation and the University of Cincinnati College of Medicine, Cincinnati, Ohio, USA. ²The Rockefeller University, New York, New York, USA. ³Joseph J. Jacobs Center for Thrombosis and Vascular Biology, Cleveland Clinic Foundation, Cleveland, Ohio, USA.

The leukocyte integrin $\alpha_M\beta_2$ /Mac-1 appears to support the inflammatory response through multiple ligands, but local engagement of fibrin(ogen) may be particularly important for leukocyte function. To define the biological significance of fibrin(ogen)- $\alpha_M\beta_2$ interaction in vivo, gene-targeted mice were generated in which the $\alpha_M\beta_2$ -binding motif within the fibrinogen γ chain (N³⁹⁰RLSIGE³⁹⁶) was converted to a series of alanine residues. Mice carrying the *Fib γ ^{390-396A}* allele maintained normal levels of fibrinogen, retained normal clotting function, supported platelet aggregation, and never developed spontaneous hemorrhagic events. However, the mutant fibrinogen failed to support $\alpha_M\beta_2$ -mediated adhesion of primary neutrophils, macrophages, and $\alpha_M\beta_2$ -expressing cell lines. The elimination of the $\alpha_M\beta_2$ -binding motif on fibrin(ogen) severely compromised the inflammatory response in vivo as evidenced by a dramatic impediment in leukocyte clearance of *Staphylococcus aureus* inoculated into the peritoneal cavity. This defect in bacterial clearance was due not to diminished leukocyte trafficking but rather to a failure to fully implement antimicrobial functions. These studies definitively demonstrate that fibrin(ogen) is a physiologically relevant ligand for $\alpha_M\beta_2$, integrin engagement of fibrin(ogen) is critical to leukocyte function and innate immunity in vivo, and the biological importance of fibrinogen in regulating the inflammatory response can be appreciated outside of any alteration in clotting function.

Introduction

The β_2 (CD18) subfamily of integrins serves a vital role in leukocyte function and the development of an effective inflammatory response in vivo (1). Genetic deficiency in β_2 results in the severe immunological disorder, leukocyte adhesion deficiency type I (LAD I), that is characterized by a profound reduction in neutrophil emigration at sites of inflammation and chronic infections (2). Four members of the integrin β_2 subfamily have been recognized: $\alpha_M\beta_2$ (Mac-1, CD11b/CD18, CR3), $\alpha_L\beta_2$ (LFA-1, CD11a/CD18), $\alpha_X\beta_2$ (p150,95, CD11c/CD18), and $\alpha_D\beta_2$ (CD11d/CD18) (3, 4). Based in part on the prominent expression of $\alpha_M\beta_2$ and $\alpha_L\beta_2$ on the surface of key inflammatory cells, including neutrophils, monocytes, macrophages, and mast cells, these integrins are generally thought to play a dominant role in inflammatory cell function. The critical importance of $\alpha_M\beta_2$ and $\alpha_L\beta_2$ in leukocyte function in vivo has been affirmed and clarified through detailed studies of mice with specific genetic deficits in α_M , α_L , and β_2 (5–8). Working in concert, $\alpha_L\beta_2$ and $\alpha_M\beta_2$ appear to be instrumental in (a) firm adhesion of leukocytes to the vessel wall that follows selectin-mediated rolling events (b) transendothelial cell migration and leukocyte trafficking (c) leukocyte activation, and (d) cell survival/apoptosis (1, 9–11).

Central to unraveling the precise biological roles of $\alpha_M\beta_2$ and $\alpha_L\beta_2$ is defining the biologically relevant ligands for each of these integrins. While common ligands are known, these integrins are

clearly designed to engage a distinct repertoire of cell-surface and ECM proteins (12). $\alpha_L\beta_2$ specifically binds intercellular adhesion molecule (ICAM) family members, whereas $\alpha_M\beta_2$ is capable of binding a remarkable assortment of seemingly unrelated ligands, including ICAM-1, the complement C3 derivative, iC3b, the urokinase-type plasminogen activator receptor (uPAR), platelet membrane glycoprotein GP1b α , and immobilized fibrin(ogen) (12). The physiological and/or pathological significance of these and other possible ligands that might regulate leukocyte function and innate immunity remains to be fully defined.

Given the increasingly persuasive evidence suggesting an important interplay between hemostatic factors and inflammatory systems, fibrin(ogen) has gained increasing attention as a possible biologically significant ligand for $\alpha_M\beta_2$. As a symmetrical dimer that is recognized by a variety of integrin and nonintegrin receptors on multiple cell types, fibrinogen could serve as a bridging molecule between leukocytes and other cells, including platelets. Furthermore, as a protein that is deposited in the form of a provisional fibrin matrix at virtually any site of overt tissue damage, fibrin could serve as a significant nondiffusible cue in regulating leukocyte targeting. Consistent with this general theory, multiple in vitro studies have shown that leukocyte engagement of fibrin(ogen) can profoundly alter leukocyte function, leading to changes in cell migration, phagocytosis, NF- κ B-mediated transcription, production of chemokines and cytokines, degranulation, and other processes (13–18).

These findings have driven efforts to better define the molecular details of the interaction between fibrinogen and $\alpha_M\beta_2$. One notable facet of the binding interaction is that both fibrin and immobilized fibrinogen are bound with high-affinity/avidity by $\alpha_M\beta_2$, whereas soluble fibrinogen is a relatively poor ligand (19,

Nonstandard abbreviations used: clumping factor A (ClfA); human embryonic kidney (HEK); intercellular adhesion molecule (ICAM); leukocyte adhesion deficiency type I (LAD I); urokinase-type plasminogen activator receptor (uPAR).

Conflict of interest: The authors have declared that no conflict of interest exists.

Citation for this article: *J. Clin. Invest.* 113:1596–1606 (2004). doi:10.1172/JCI200420741.



20). This conformation-dependent binding implies that $\alpha_M\beta_2$ would generally not be occupied when circulating leukocytes passively encounter plasma fibrinogen. The integrin, however, would mediate avid cellular engagement of immobilized fibrin(ogen) at sites of tissue damage, locations where copious fibrin deposition would be universally observed. Multiple sequences in fibrinogen can interact with $\alpha_M\beta_2$, but the most compelling data point to a critical role of the γ chain in the region of $\gamma^{377-395}$ (P2 sequence; ref. 21, 22) and particularly its carboxy-terminal region (P2-C). To definitively establish whether the P2-C region of the fibrinogen γ chain constitutes the critical motif for $\alpha_M\beta_2$ binding in the context of the whole fibrinogen molecule, and to provide the means to evaluate the biological importance of fibrin(ogen)- $\alpha_M\beta_2$ interactions in inflammatory processes *in vivo*, we employed a gene-targeting approach to convert the mouse fibrinogen γ chain sequence N³⁹⁰RLSIGE³⁹⁶ to a series of seven alanine residues. This mutant form of fibrinogen (which we term fibrinogen $\gamma^{390-396A}$) maintained normal hemostatic properties. Fibrinogen $\gamma^{390-396A}$ was unable to support $\alpha_M\beta_2$ -mediated cellular adhesion *in vitro*, however, and mice constitutively expressing this mutant form of fibrinogen exhibited a major impediment in inflammatory cell clearance of *Staphylococcus aureus* in the context of acute peritonitis.

Methods

Generation of gene-targeted mice. The fibrinogen γ chain targeting vector was constructed using a portion of the mouse gene cloned from a 129-strain genomic DNA library. PCR-based mutagenesis was used to convert the exon 9 sequence encoding amino acid residues 390–396 of the mature protein (N³⁹⁰RLSIGE³⁹⁶) to a series of alanines. The selected nucleotide substitutions also resulted in the introduction of a *PvuII* site that served to flag the mutant allele in establishing animal genotypes. All nucleic acid substitutions were confirmed by DNA sequence analysis. HPRT and HSV-tk minigenes were introduced into the γ chain targeting vector as described (23). E14TG2a (24) ES cells that had incorporated the targeting vector by homologous recombination were initially identified by PCR analysis using primers complementary to the HPRT minigene (primer 5: 5'-CCT-GAAGAACGAGATCAGCAGCCTCTGTTC-3') and the γ chain gene (primer 6: 5'-ATACATGGATATTAGCCAGGCAGTAGTGAC-3') that generated a PCR product of 754 bp. Positive clones were confirmed using a second primer set complementary to the HPRT minigene (primer 4: 5'-AAATGCTCCAGACTGCCTTG-3') and the γ chain gene (primer 3: 5'-ATTGACATGATACCAAAATTGCTTATTG-3'), which yielded a 5,735-bp PCR product. Homologous recombination of the targeting vector was further confirmed by Southern blot analysis of *PvuII*-digested genomic DNA. A hybridization probe was prepared from a 320-bp *NcoI/PvuII* restriction enzyme fragment located downstream of the fibrinogen γ chain gene. Mice were routinely genotyped by PCR analysis using primers immediately upstream (primer 1: 5'-ATTGACATGATACCAAAATTGCTTATTG-3') and downstream (primer 2: 5'-CCATTTAAGGCTAGGTATCATCT-TAAGAAAG-3') of exon 9, which yielded a PCR product of 527 bp. The PCR product from the mutant allele was recognized by the generation of 304-bp and 223-bp fragments following *PvuII* digestion. Founder mice were bred to NIH Black Swiss females (Taconic Farms, Germantown, New York, USA) to generate heterozygous mice that were then interbred to produce homozygous mutant animals. Animals carrying the mutant allele were subsequently backcrossed six generations to C57Bl/6 mice, and these C57Bl/6-inbred mice were used in all of the *in vivo* studies presented.

Hematological analyses. Hematological analyses of blood cells were done using a Cell-Dyn 4000 analyzer, and plasma thrombin times were established as described previously (25). Fibrin polymerization was evaluated by standard turbidity assays using both plasma and purified fibrinogen. Briefly, citrate plasma (diluted tenfold in 20 mM HEPES, pH 7.4, containing 0.15 M NaCl and 5 mM ϵ -amino caproic acid) or 0.15 mg/ml purified fibrinogen in the same buffer was combined with bovine thrombin (final concentration 0.2 U/ml; Enzyme Research Laboratories, South Bend, Indiana, USA), and Ca²⁺ (10 mM), and OD₃₅₀ measurements were taken every 30 seconds. Western blot analysis of plasma fibrinogen was performed using rabbit anti-mouse fibrinogen in conjunction with an ECL detection system (Amersham Pharmacia Biotech, Piscataway, New Jersey, USA) (25). Covalent cross-linking of the fibrinogen γ chain by factor XIIIa was analyzed using purified fibrinogen. Briefly, 0.25 mg/ml fibrinogen was combined with 2 U/ml bovine thrombin, 0.15 mg/ml human factor XIII (Enzyme Research Laboratories), and 25 mM Ca²⁺ and incubated for up to 10 minutes at 37°C. Reactions were terminated by addition of 2% SDS, 10% β -mercaptoethanol, and 0.1 M EDTA, and the fibrin chains were analyzed by SDS-PAGE.

Platelet aggregation and flow cytometry. Platelet aggregation was performed at 37°C using a ChronoLog 560 aggregometer as described (25). Briefly, platelet suspensions in autologous plasma were prepared from WT, *Fib γ ^{390-396A}*, and *Fib γ ^{Δ 5}* mice (23) and adjusted to approximately 300,000 platelets per microliter. Aggregation was initiated with ADP (final concentration of 10 μ M). Flow-cytometric analyses of fibrinogen binding to ADP-activated platelets by $\alpha_{IIb}\beta_3$ were done using a FITC-conjugated rabbit anti-human fibrinogen Ab (DAKO A/S, Glostrup, Denmark), as previously described (23).

Purification of plasma fibrinogen. Fibrinogen was isolated from citrated mouse plasma using Gly-Pro-Arg affinity chromatography (26). The affinity matrix was prepared using a Gly-Pro-Arg-Pro-Cys peptide (Invitrogen Corp. Carlsbad, California, USA) conjugated to SulfoLink coupling gel (Pierce Biotechnology Inc., Rockford, Illinois, USA). Purified fibrinogen was then dialyzed exhaustively against 20 mM HEPES, pH 7.4, containing 0.15 M NaCl and 5 mM ϵ -amino caproic acid. Fibrinogen concentration was determined spectrophotometrically and its quality established by SDS-PAGE.

Thrombus formation following FeCl₃ injury *in vivo*. Thrombosis was induced in the carotid artery of anesthetized mice using FeCl₃ as described in detail elsewhere (27). Thrombus formation was recorded for up to 30 minutes using a miniature video camera (ProVideo CVC-514; CSI/SPECO, Amityville, New York, USA). Blood flow through the carotid artery was monitored using a Doppler flow probe (0.5VB307; Transonic Systems Inc., Ithaca, New York, USA) connected to a flow meter (T106; Transonic Systems Inc.). After the 30-minute recording period, anesthetized animals were perfused with 4% paraformaldehyde in PBS, and the injured carotid arteries were collected for electron microscopy and histology.

Cell adhesion assays using cell lines and primary phagocytes. Human embryonic kidney 293 (HEK293) cell lines expressing β_2 integrins were described previously (21, 28). THP-1 monocytoid cells were obtained from American Type Culture Collection (Manassas, Virginia, USA). Human neutrophils were isolated from heparinized peripheral blood from consenting volunteers by centrifugation through leukocyte separation media (Histopaque-1119 and Histopaque-1077; Sigma-Aldrich, St. Louis, Missouri, USA) according to the manufacturer's recommendations. Human blood monocytes were isolated from EDTA anticoagulated peripheral

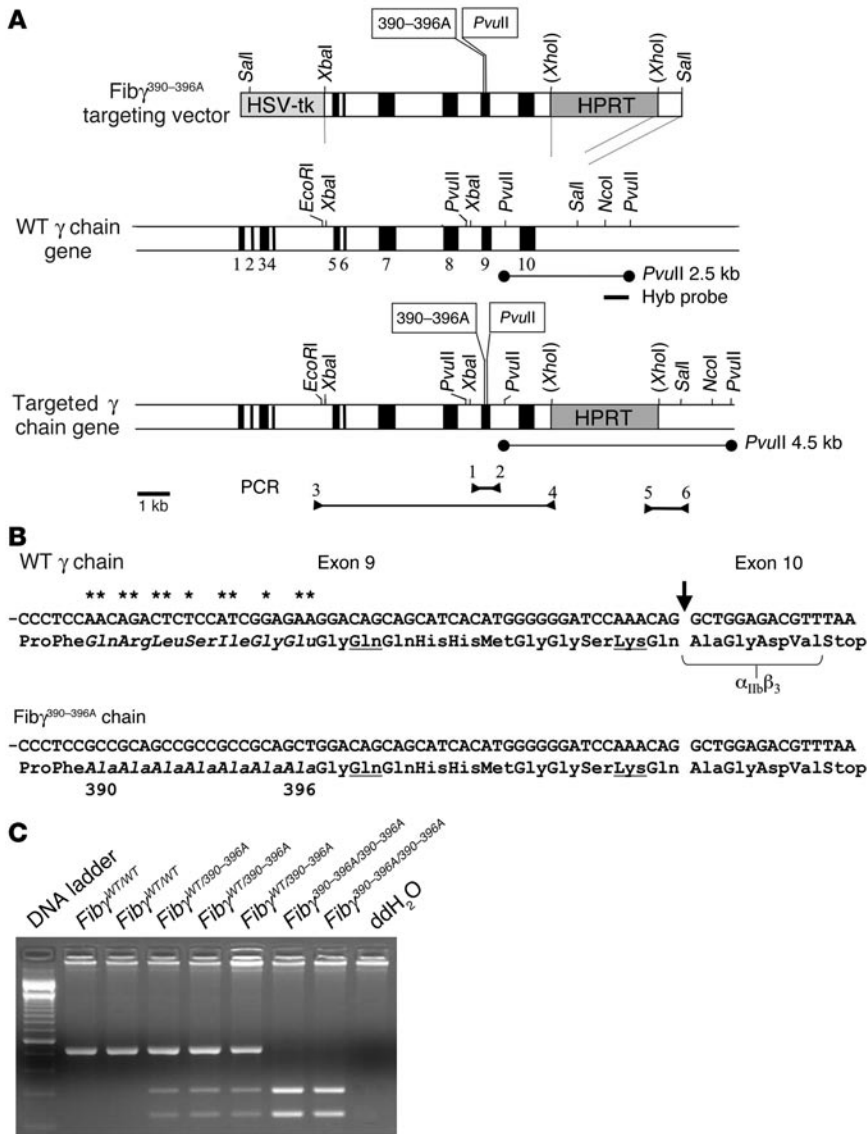


Figure 1
 Modification of the fibrinogen γ chain gene. **(A)** Overall structure of the Fib $\gamma^{390-396A}$ gene-targeting vector, the WT fibrinogen γ chain gene, and the targeted Fib $\gamma^{390-396A}$ allele. Exons are depicted as solid areas, and the introduced nucleotide substitutions and PvuII site are indicated in text boxes as 390–396A and PvuII, respectively. The PvuII fragments that were diagnostic for the WT and targeted alleles by Southern blot assays are indicated by thin lines. Arrowheads indicate the position of diagnostic PCR primers used for detecting homologous recombination events in ES cells. Routine animal genotyping was done using primers 1 and 2 followed by PvuII digestion. **(B)** Partial nucleotide sequence of exons 9 and exon 10 of the WT and $\gamma^{390-396A}$ genes. Asterisks indicate nucleotides that were mutated in the Fib $\gamma^{390-396A}$ allele. A vertical arrow indicates the position of the exon 9 to 10 splice junction. Amino acids altered by the nucleotide substitutions are in italics. Underlined amino acids indicate the glutamine and lysine that participate in transglutaminase-mediated cross-linking. Amino acids that are known to be critical for platelet integrin receptor $\alpha_{IIb}\beta_3$ binding (23) are bracketed. **(C)** Representative PCR analyses to establish animal genotypes using DNA template from ear biopsies of WT, hemizygous, and homozygous mutant Fib $\gamma^{390-396A}$ mice. Primers 1 and 2 were used to amplify a 527-bp fragment, which was subsequently digested with PvuII to yield the diagnostic fragments of 304 bp and 223 bp. ddH₂O, double distilled water.

blood of consenting volunteers according to an established protocol (29, 30). Mouse resident peritoneal macrophages were isolated from lavage fluid by placing cell suspensions in serum containing RPMI-1640 on uncoated Cellstar microtiter plates. After incubation for 4 hours at 37°C, unbound cells were aspirated, and the adherent macrophages were subsequently removed using ice-cold PBS containing 2 mg/ml glucose and 0.5 mM EDTA. These preparations were shown to be primarily macrophages by staining cytoplasmic preparations with Diff-Quik (Dade Behring Inc., Deerfield, Illinois, USA). Prior to use in adhesion assays, cell preparations were suspended in either HBSS (HEK293 cells and monocytes) containing 5 mM Ca²⁺ and 5 mM Mg²⁺ or serum-free RPMI-1640 (THP-1, neutrophils, and macrophages) at a concentration of 0.5 × 10⁵/ml to 1 × 10⁶/ml.

Cell adhesion assays were performed in 48-well or 96-well polystyrene plates (Costar; Corning Inc., Corning, New York, USA) that were coated with purified fibrinogen. Nonspecific binding was blocked using either 1% polyvinylpyrrolidone (HEK293 cells, primary monocytes, and primary macrophages) or 1% nonfat

dry milk (THP-1 cells and primary neutrophils). HEK293 cells were harvested using cell-dissociation buffer (Invitrogen Corp.). Aliquots of cells (200 μ l) were added to wells and incubated at 37°C for 25 minutes and subsequently washed with buffered saline to remove nonadherent cells. Inhibition experiments were performed using the following Ab's: M1/70 rat anti-mouse α_M (known to block both mouse and human $\alpha_M\beta_2$; eBioscience, San Diego, California, USA), IB4 anti- β_2 (American Type Culture Collection), or control rat anti-mouse IgG (Pierce Biotechnology Inc.). Ab's were incubated with cells at 20 μ g/ml for 15 minutes at room temperature before transfer to coated wells. The number of adherent cells was determined by either counting multiple high-powered ($\times 100$) fields or using a CyQuant (Molecular Probes Inc., Eugene, Oregon, USA) fluorescence detection system. All analyses were performed in triplicate.

Differential analysis of resident peritoneal cells. Peritoneal lavage fluid was collected by injection of 5 ml of PBS into the abdominal cavity of anesthetized mice. The total number of cells present within the lavage fluid was determined manually using a hemocytom-



eter. Differential cell counts were made using cytospin preparations stained with Diff-Quik (Dade Behring Inc.). The percentage of neutrophils was confirmed by Leder stain. Flow cytometry was performed using fluorochrome-labeled rat anti-mouse CD3 (BD Biosciences, San Jose, California, USA), rat anti-mouse CD19 (BD Biosciences), and rat anti-mouse F4/80 (CalTag Laboratories Inc., Burlingame, California, USA) to confirm the percentage of T cells, B cells, and macrophage/monocytes, respectively.

Clearance of intraperitoneal *S. aureus*. A WT Newman strain of *S. aureus* and a *clumping factor A*-deficient (*ClfA*-deficient) derivative (DU5852) (kindly provided by T.J. Foster, Trinity College, Dublin, Ireland) were employed. Overnight cultures of bacteria were harvested by centrifugation, washed, and then resuspended in cold sterile saline at 4×10^8 /ml to 10×10^8 /ml. In experiments using heat-killed bacteria, suspensions were boiled for 5 minutes prior to injection. Bacterial kill was confirmed by plating dilutions of the boiled suspensions on tryptic soy agar. Mice were given an intraperitoneal injection with 1 ml of bacterial suspension, and the peritoneal lavage fluids were later collected using ice-cold buffered saline as described above. Serial dilutions were plated on tryptic soy agar to establish the bacterial CFUs.

Results

Site-directed mutagenesis of the endogenous fibrinogen γ chain gene. To determine the physiological and pathological importance of fibrin(ogen) as a ligand for $\alpha_M\beta_2$, we generated a replacement-type gene-targeting vector to selectively eliminate the $\alpha_M\beta_2$ -binding site previously identified within the carboxy-terminal portion of the fibrinogen γ chain (21). The specific residues selected for mutation, N³⁹⁰RLSIGE³⁹⁶, were chosen based on four findings and/or criteria. First, this sequence was a consistent element within P2 peptides, known to block $\alpha_M\beta_2$ binding to immobilized fibrinogen. Second, these amino acids were conserved between species (note that the sequence is N³⁹⁰RLTIGE³⁹⁶ in the human molecule). Third, these residues were largely exposed to solvent based on the crystal structure of fibrinogen derivatives. Finally, this sequence was spatially far removed from the γ chain "hole" known to support fibrin polymerization (31). Thus, an alteration within residues 390–396 was not expected to alter clotting function. Using portions of the cloned mouse γ chain gene and a PCR-based mutagenesis strategy, a targeting vector was generated in which 12 nucleotide substitutions were introduced within the exon 9 sequence (Figure 1, A and B). These substitutions simultaneously converted the codons encoding γ chain residues 390–396 to a series of seven alanine residues and introduced a diagnostic

PvuII site. Embryonic stem cell transfectants that had incorporated the targeting vector by homologous recombination based on PCR analyses (see Figure 1A and Methods) were used to generate transgenic founder mice. The introduction of the *Fib* $\gamma^{390-396A}$ targeting vector into the mouse genome by homologous recombination was confirmed by both PCR (see representative data in Figure 1C) and Southern blot analysis of genomic DNA purified from tail biopsies. Crosses between hemizygous mice established that the *Fib* $\gamma^{390-396A}$ mutation was compatible with Mendelian inheritance; of the first 235 pups generated from hemizygous breeding pairs, 62 (26%) carried only the WT allele (WT/WT), 107 (46%) were hemizygous (WT/ $\gamma^{390-396A}$), and 66 (28%) carried only the mutant allele ($\gamma^{390-396A}/\gamma^{390-396A}$, hereafter simply referred to as *Fib* $\gamma^{390-396A}$ mice). Unlike fibrinogen-null mice (25), *Fib* $\gamma^{390-396A}$ mice never developed overt spontaneous bleeding events, and the survival profile of unchallenged *Fib* $\gamma^{390-396A}$ mice was indistinguishable from WT littermates. Furthermore, unlike fibrinogen-null females, which uniformly develop fatal intrauterine bleeding during pregnancy, *Fib* $\gamma^{390-396A}$ females exhibited excellent reproductive success and were capable of supporting multiple pregnancies to term (data not shown). Finally, *Fib* $\gamma^{390-396A}$ offspring could be consistently raised from homozygous mutant parents, indicating that neither reproduction nor development was compromised by the mutant fibrinogen, regardless of its maternal and/or embryonic source.

Fib $\gamma^{390-396A}$ mice carry normal levels of fibrinogen and exhibit a normal hematological profile. The seven amino acid substitutions introduced into the γ chain did not alter the steady-state concentration or size of the component chains within circulating fibrinogen based on Western blot analyses (see Figure 2). The overall structural integrity of the mutant plasma fibrinogen was further established by com-

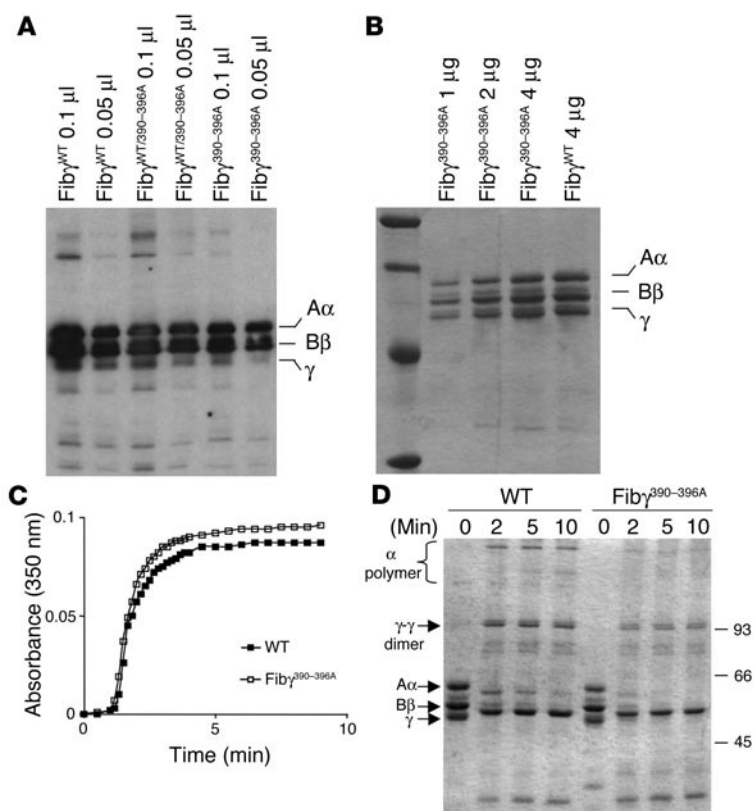


Figure 2

parisons of the mutant plasma fibrinogen with WT plasma fibrinogen. The overall structural integrity of the mutant plasma fibrinogen was further established by com-



Table 1
Hematological analysis of WT and *Fib* $\gamma^{390-396A}$ mice

	WT (n = 6)	<i>Fib</i> $\gamma^{390-396A}$ (n = 6)
wbc ($\times 10^9/l$)	3.3 \pm 1.3	2.7 \pm 0.9
rbc ($\times 10^{12}/l$)	8.3 \pm 0.6	8.1 \pm 1.4
Hemoglobin (g/dl)	13.0 \pm 1.3	12.9 \pm 2.8
Hematocrit (%)	43.9 \pm 5.5	44.6 \pm 10.5
Platelets ($\times 10^9/l$)	762 \pm 78	905 \pm 148
Thrombin time (s)	10.5 \pm 0.5	12.0 \pm 0.5

Comparative analysis of each parameter indicates no genotype-dependent statistically significant difference by Student's *t* test analysis. wbc, white blood cell.

parative analysis of purified fibrinogen (Figure 2). The component fibrinogen chains were indistinguishable in both ratio and size in WT and *Fib* $\gamma^{390-396A}$ mice. A more general hematological analysis of blood cells showed that the complete blood cell counts, including red cells, white cells, and platelets, were virtually identical in control (n = 6) and *Fib* $\gamma^{390-396A}$ (n = 6) mice (Table 1). The fact that the mutant fibrinogen did not alter blood platelet count is consistent with the view that fibrinogen $\gamma^{390-396A}$ presents no hemorrhagic consequences that might lead to inordinate platelet consumption.

Fibrinogen $\gamma^{390-396A}$ maintains normal coagulation properties. One objective in generating the *Fib* $\gamma^{390-396A}$ mutation was to explore the potential role(s) of fibrinogen in innate immunity in a context where clotting function was in no way compromised. To confirm that the *Fib* $\gamma^{390-396A}$ mutation did not impede fibrin polymer formation, multiple coagulation analyses were performed. Thrombin clotting time is sensitive to both fibrinogen concentration and structure. As shown in Table 1, plasma samples from WT and *Fib* $\gamma^{390-396A}$ mice exhibited indistinguishable clotting times following addition of bovine thrombin and Ca²⁺. As a second comparative analysis of fibrin polymer formation, standard turbidity measurements were made as a function of time following addition of thrombin and Ca²⁺ to diluted plasma (see Figure 2C for representative polymerization profiles) or purified fibrinogen (data not shown) prepared from control and *Fib* $\gamma^{390-396A}$ mice. No significant difference in polymerization profile was observed using samples prepared from multiple WT and *Fib* $\gamma^{390-396A}$ mice. Both the lag phase (indicative of the time required for fibrinopeptide release) and the subsequent fibrin monomer assembly rates were indistinguishable using multiple preparations of WT and mutant fibrinogen. Furthermore, detailed electrophoretic analyses of denatured and reduced fibrin clots prepared using purified fibrinogen from control and mutant mice showed that there was no apparent difference in factor XIIIa-catalyzed (transglutaminase-catalyzed) cross-linking of the γ chain to form γ - γ dimers (Figure 2D). The γ - γ dimers were also readily detected within plasma clots from both WT and *Fib* $\gamma^{390-396A}$ mice (data not shown). These data infer that the overall structural integrity of fibrinogen is maintained in the $\gamma^{390-396A}$ mutant and the most dramatic property of fibrinogen, the ability to polymerize into an insoluble matrix, was preserved in fibrinogen $\gamma^{390-396A}$.

Fibrinogen $\gamma^{390-396A}$ supports platelet aggregation and normal thrombus formation. By engaging the platelet integrin $\alpha_{IIb}\beta_3$, fibrinogen supports platelet aggregation and promotes formation of stable platelet thrombi at sites of vascular damage. To determine if the $\gamma^{390-396A}$ mutation altered the ability of fibrinogen to engage $\alpha_{IIb}\beta_3$, mutant and WT fibrinogen were compared for (a) their binding activity to ADP-activated platelets (b) their ability support ADP-induced platelet aggregation in vitro, and (c) their ability to

support thrombus formation in vivo. Using an established flow-cytometry approach, we found no quantitative difference in WT and $\gamma^{390-396A}$ fibrinogen binding to $\alpha_{IIb}\beta_3$ on ADP-activated platelets (see supplemental material; available at <http://www.jci.org/cgi/content/full/113/11/1596/DC1>). Furthermore, ADP-induced platelet aggregation in vitro followed a similar pattern using platelet-rich plasma from WT and *Fib* $\gamma^{390-396A}$ animals (Figure 3). To control for the fibrinogen dependence of platelet aggregation in these experiments, parallel studies were done using *Fib* γ^{A5} mice (23), a mutant line expressing a form of fibrinogen lacking the $\alpha_{IIb}\beta_3$ -binding motif. As shown previously, no ADP-induced platelet aggregation was observed (Figure 3). As a final test of the ability of fibrinogen $\gamma^{390-396A}$ to support platelet/fibrin deposition, thrombus formation within FeCl₃-injured carotid arteries was compared in WT and *Fib* $\gamma^{390-396A}$ mice by both real-time intravital videomicroscopy and scanning electron microscopy of fixed tissues. No appreciable difference was observed in the time to vessel occlusion (10.2 \pm 0.9 minutes, n = 4 for WT and 10 \pm 2 minutes, n = 3 for *Fib* $\gamma^{390-396A}$ animals) or thrombus stability/appearance (see supplemental material). Therefore, in this model, thrombus formation in vivo appears to be unimpaired in mice expressing fibrinogen $\gamma^{390-396A}$.

Fibrinogen $\gamma^{390-396A}$ does not support $\alpha_M\beta_2$ -mediated cell adhesion in vitro. To test the central hypothesis that the $\gamma^{390-396A}$ mutation would specifically eliminate $\alpha_M\beta_2$ engagement of fibrinogen, affinity-purified fibrinogen preparations from WT and *Fib* $\gamma^{390-396A}$ mice were immobilized on microtiter plates and compared for their ability to support $\alpha_M\beta_2$ -dependent cell adhesion. Our initial studies focused on a cell type that plays a critical role in the inflammatory response in vivo and that is known to engage immobilized fibrin(ogen) almost exclusively through $\alpha_M\beta_2$ in vitro — primary neutrophils (7, 32). Consistent with earlier reports, isolated human peripheral blood neutrophils were found to readily adhere to immobilized WT fibrinogen (Figure 4A), and this adhesion was largely $\alpha_M\beta_2$ -dependent based on inhibitor studies with the α_M -specific mAb, M1/70 (Figure 4D). More significantly, purified fibrinogen $\gamma^{390-396A}$ failed to support the adhesion of primary human neutrophils (Figure 4, B and D). This profound difference in cell adhesion to WT and

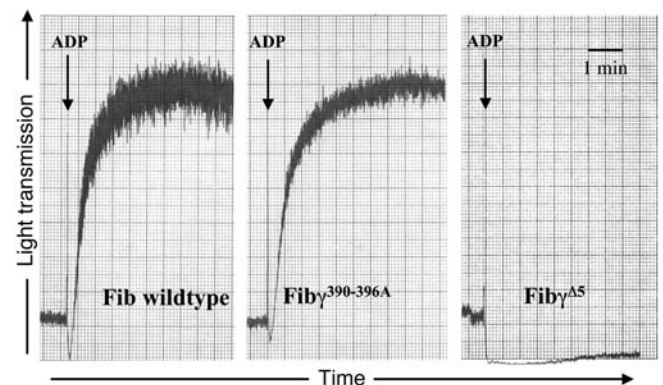


Figure 3
Fibrinogen $\gamma^{390-396A}$ supports normal platelet aggregation. Comparative analysis of ADP-induced platelet aggregation in vitro using platelet-rich plasma prepared from WT and *Fib* $\gamma^{390-396A}$ mice. The fibrinogen dependence of aggregation in vitro was demonstrated with *Fib* γ^{A5} mice that express a mutant form of fibrinogen lacking the $\alpha_{IIb}\beta_3$ -binding motif. The decline in transmitted light that immediately follows ADP addition is a consequence of platelet shape change.

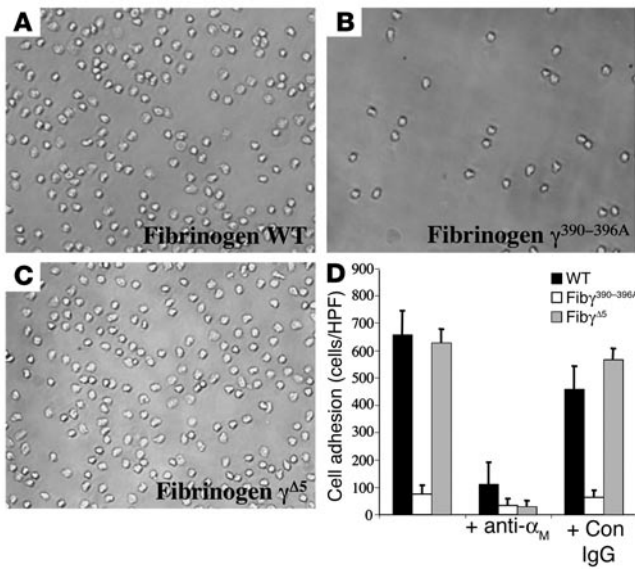


Figure 4

Fibrinogen $\gamma^{390-396A}$ does not support $\alpha_M\beta_2$ -dependent adhesion of primary neutrophils. Primary human neutrophils (10^6 cells/ml) were transferred to either uncoated wells, wells coated with $10 \mu\text{g/ml}$ WT mouse fibrinogen (A), wells coated with $10 \mu\text{g/ml}$ fibrinogen $\gamma^{390-396A}$ (B), or wells coated with $10 \mu\text{g/ml}$ fibrinogen γ^{A5} (C). Shown are representative views of bound cells after 25 minutes. (D) Quantitative comparison of neutrophil adhesion to WT, fibrinogen $\gamma^{390-396A}$, and fibrinogen γ^{A5} . The specificity of neutrophil engagement was established by preincubating neutrophils with $20 \mu\text{g/ml}$ of the rat anti-mouse α_M I-domain Ab, M1/70, or control rat anti-mouse IgG for 15 minutes at room temperature before addition to the fibrinogen-coated wells. The data shown are means \pm SD. HPF, high power field; Con, control.

$\gamma^{390-396A}$ fibrinogen was not a trivial reflection of a difference in the amount of fibrinogen immobilized; quantitative immunological analyses indicated that WT and mutant fibrinogen was absorbed onto the surface of plastic wells with equal efficiency (data not shown). As a final specificity control in these cell adhesion studies, we showed that another fibrinogen derivative, fibrinogen γ^{A5} , lacking the carboxy-terminal γ chain residues 407–411, supported $\alpha_M\beta_2$ -dependent neutrophil adhesion to the same extent as WT fibrinogen (Figure 4, C and D).

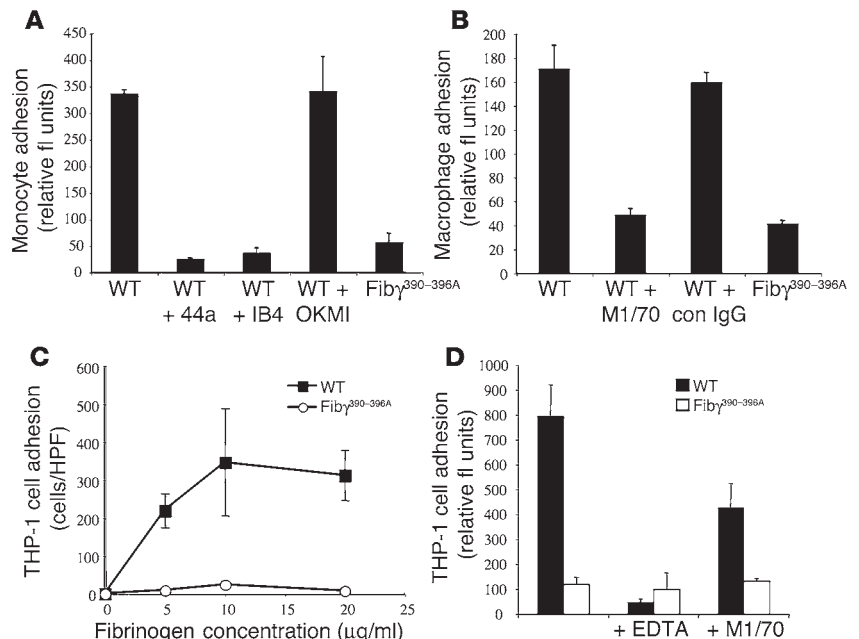
These comparative studies of primary leukocyte adhesion to WT and $\gamma^{390-396A}$ fibrinogen were also extended to isolated peripheral blood human monocytes (Figure 5A) and mouse resident peritoneal macrophages (Figure 5B) with a similar outcome. As expected, monocytes and macrophages exhibited excellent adhesion to WT fibrinogen, and this adhesion was effectively blocked by $\alpha_M\beta_2$ -blocking Ab's to either the α_M subunit (e.g., 44a or M1/70) or β_2 subunit (e.g., IB4), but not control Ab's. Neither primary monocytes nor macrophages were adherent to fibrinogen

$\gamma^{390-396A}$, however (Figure 5, A and B). A similar pattern was also seen with THP-1 cells, a human monocytic cell line known to express high levels of $\alpha_M\beta_2$ and to adhere to fibrinogen through $\alpha_M\beta_2$ (33). Robust, concentration-dependent adhesion of THP-1 cells was observed for WT, but not $\gamma^{390-396A}$, fibrinogen (Figure 5, C and D). In agreement with previous reports that $\alpha_M\beta_2$ engagement of fibrinogen is conformation dependent (i.e., strong when fibrinogen is surface immobilized or converted to fibrin, but weak with soluble fibrinogen), THP-1 cell adhesion to immobilized WT fibrinogen was not inhibited by either soluble WT or $\gamma^{390-396A}$ fibrinogen, even at concentrations that were orders of magnitude above the K_d of $\alpha_M\beta_2$ for other established high-affinity ligands (data not shown). Taken together, these data suggest that fibrinogen $\gamma^{390-396A}$ neither supports $\alpha_M\beta_2$ -dependent cell adhesion in vitro nor results in a gain-of-function property whereby the soluble molecule is bound with high affinity by $\alpha_M\beta_2$.

To more rigorously define the specific impact of the fibrinogen $\gamma^{390-396A}$ mutation on interaction with β_2 integrin receptors, we evaluated the binding potential of HEK293 transfectants expressing $\alpha_M\beta_2$ or the related integrin, $\alpha_L\beta_2$ (21, 28, 34). Consistent with the requirement for a specific β_2 integrin to support cell adhesion to fibrinogen, mock transfectants (empty expression vector)

Figure 5

Fibrinogen $\gamma^{390-396A}$ fails to support $\alpha_M\beta_2$ -dependent adhesion of monocytes, macrophages, or the monocytoid cell line, THP-1. (A) Comparative analysis of primary human blood monocyte adhesion to immobilized WT and $\gamma^{390-396A}$ fibrinogen (coating concentration $2 \mu\text{g/ml}$). Specificity of integrin-mediated binding was established by preincubation of cells with blocking α_M - or β_2 -specific mAb's (44a and IB4, respectively). The nonblocking α_M mAb, OKM1, was used as a control. (B) Comparative analysis of mouse peritoneal macrophage adhesion to WT and $\gamma^{390-396A}$ fibrinogen. The blocking Ab M1/70 was used to demonstrate $\alpha_M\beta_2$ -specificity. (C) THP-1 cell adhesion as a function of fibrinogen coating concentration using either WT or $\gamma^{390-396A}$ fibrinogen. (D) Adhesion of THP-1 cells to WT or $\gamma^{390-396A}$ fibrinogen in the presence of either EDTA or $\alpha_M\beta_2$ Ab, M1/70. The data shown are means \pm SD. fl, fluorescence.



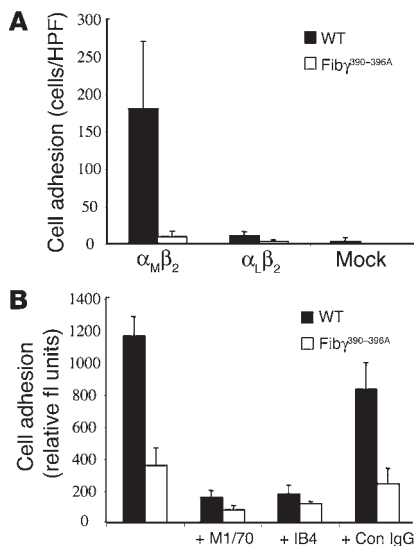


Figure 6
Cell adhesion to fibrinogen is supported by integrin $\alpha_M\beta_2$, but not the related integrin, $\alpha_L\beta_2$. (A) Adhesion of HEK293 transfectants expressing either $\alpha_M\beta_2$, $\alpha_L\beta_2$, or no β_2 integrin (mock transfectants) to microtiter wells coated with either 10 μ g/ml WT or $\gamma^{390-396A}$ fibrinogen. (B) Adhesion of $\alpha_M\beta_2$ -expressing HEK293 cells to WT or $\gamma^{390-396A}$ fibrinogen in the absence or presence of Ab's against the α_M I-domain (M1/70), β_2 (IB4), and irrelevant rat anti-mouse IgG. The data shown are means \pm SD.

or transfectants expressing $\alpha_L\beta_2$ (an integrin known not to bind fibrinogen) failed to adhere to any immobilized fibrinogen preparation (Figure 6A), whereas HEK293 transfectants expressing $\alpha_M\beta_2$ displayed excellent adhesion to WT fibrinogen (Figure 6, A and B). More importantly, immobilized fibrinogen $\gamma^{390-396A}$ failed to support HEK293 cell adhesion regardless of the presence or absence of $\alpha_M\beta_2$ or $\alpha_L\beta_2$ (Figure 6, A and B). Similar results were observed in multiple independent experiments.

Leukocyte clearance of peritoneal bacteria is strongly impeded in mice expressing fibrinogen $\gamma^{390-396A}$. One important incentive for using a gene-targeting approach in mice was that it provided an opportunity to readily define the biological significance, if any, of $\alpha_M\beta_2$ -mediated leukocyte engagement of fibrin(ogen) in vivo. To begin to explore the in vivo consequences of the fibrinogen $\gamma^{390-396A}$ mutation on the innate immune system, we compared the ability of inflammatory cells to clear the common gram-positive pathogen, *S. aureus*, following intraperitoneal inoculation. Quantitative analysis of viable bacteria within the peritoneal lavage fluid from cohorts of WT and mutant mice 1 hour after infection revealed that *Fib $\gamma^{390-396A}$* mice exhibited a profound impediment in bacterial clearance relative to control animals in this acute peritonitis model (Figure 7A). This same pattern of inefficient bacterial clearance in *Fib $\gamma^{390-396A}$* mice was observed when mice were challenged with a mutant strain of *S. aureus* lacking the bacterial fibrinogen receptor, termed ClfA (Figure 7B). One inference of these results is that host leukocyte engagement of fibrinogen through $\alpha_M\beta_2$, rather than bacterial engagement of fibrinogen through ClfA, is the key determinant of bacterial clearance in the context of acute peritonitis. In this regard, it should be noted that control studies showed that fibrinogen $\gamma^{390-396A}$, like WT fibrinogen, retained the ability to support ClfA-dependent *S. aureus* adhesion in vitro (see supplemental material).

The genotype-dependent difference in bacterial clearance within the abdominal cavity was evident even as early as 30 minutes after infection, but was more pronounced at 3 hours as a consequence of the expansion of viable microbes (Figure 8A). Consistent with a defect in the activation of leukocyte antimicrobial functions in *Fib $\gamma^{390-396A}$* mice, microscopic analysis of lavage fluid collected 3 hours after *S. aureus* inoculation revealed few appreciable bacteria on cytospin spreads from WT mice, whereas both free and leukocyte-associated bacteria were prevalent in the mutant mice (Figure 8B). Many phagocytes appeared to be overwhelmed by bacteria and seemed physically disrupted. A similar failure to effectively clear peritoneal *S. aureus* has also been documented in fibrinogen-null mice (Du et al., unpublished observations), further underscoring the fibrinogen dependence of this clearance process. The difference in early bacterial clearance was not due to any genotype-related difference in either the number or composition of resident peritoneal leukocytes; quantitative analysis of peritoneal lavage fluids collected from unchallenged WT and *Fib $\gamma^{390-396A}$* mice indicated that the number of peritoneal macrophages, neutrophils, and mast cells (all of which are known to express $\alpha_M\beta_2$) was indistinguishable in WT and *Fib $\gamma^{390-396A}$* mice (Figure 8C). Similarly, whole blood analyses showed that the total number and differential counts of circulating white cells was not different in WT and *Fib $\gamma^{390-396A}$* mice (data not shown). Furthermore, the impediment in bacterial clearance in *Fib $\gamma^{390-396A}$* was not due to any obvious impediment in leukocyte trafficking. A significant increase in the neutrophil infiltrate was observed within the peritoneal cavity of both control and *Fib $\gamma^{390-396A}$* mice within 3 hours after infection (compare Figure 8, C and D). Although the neutrophil infiltrate tended to be modestly diminished in *Fib $\gamma^{390-396A}$* mice in these studies, the difference did not reach statistical significance ($P = 0.08$ in the Mann-Whitney U test). Given that phagocytes were clearly failing in *Fib $\gamma^{390-396A}$* mice, and often appeared to be themselves disrupted by engorged bacteria in cytospin spreads (see Figure 8B), we further explored leukocyte trafficking in WT and *Fib $\gamma^{390-396A}$* mice in response to

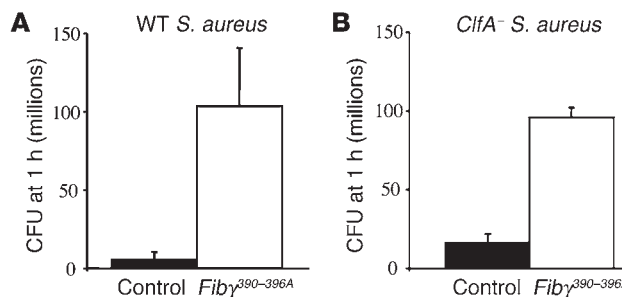


Figure 7
Fib $\gamma^{390-396A}$ mice exhibit a severe impediment in innate immunity resulting in inefficient clearance of *S. aureus* in an acute peritonitis model. (A) WT *S. aureus* was introduced by intraperitoneal injection into WT or *Fib $\gamma^{390-396A}$* mice, and peritoneal lavage fluid was collected from each animal 1 hour after inoculation to determine the total number of CFUs. (B) Comparative analysis of bacterial clearance in WT and *Fib $\gamma^{390-396A}$* mice challenged with a *S. aureus* strain lacking the bacterial fibrinogen-binding protein ClfA. Note that bacterial clearance is inefficient in *Fib $\gamma^{390-396A}$* mice relative to WT animals regardless of the presence or absence of ClfA. The data shown are means \pm SDs. $P < 0.035$ and $P < 0.021$ for WT and ClfA *S. aureus*, respectively (Mann-Whitney U test).



heat-killed *S. aureus*. Analyses of lavage fluids collected from control and *Fib γ ^{390-396A}* mice 5 hours after introduction of nonviable bacteria showed that there was a pronounced increase in total peritoneal neutrophils in challenged mice of both genotypes (Figure 8E) relative to unchallenged animals (Figure 8C). More notably, *Fib γ ^{390-396A}* mice exhibited the same robust neutrophil efflux that was observed in WT controls (Figure 8E). A similar increase in the number of leukocytes present within the peritoneal cavity was observed in control and mutant mice at 24 hours, with macrophages being a predictably higher fraction of total leukocytes (Figure 8F). Thus, neither neutrophil nor macrophage trafficking appears to be appreciably impeded by the loss of the $\alpha_M\beta_2$ -binding motif on fibrinogen, a finding that is consistent with the fact that leukocyte trafficking is generally maintained in $\alpha_M\beta_2$ -deficient mice. Rather, the loss of the fibrin(ogen)- $\alpha_M\beta_2$ interactions appear to compromise leukocyte activation pathways whereby host inflammatory cells kill microbial pathogens.

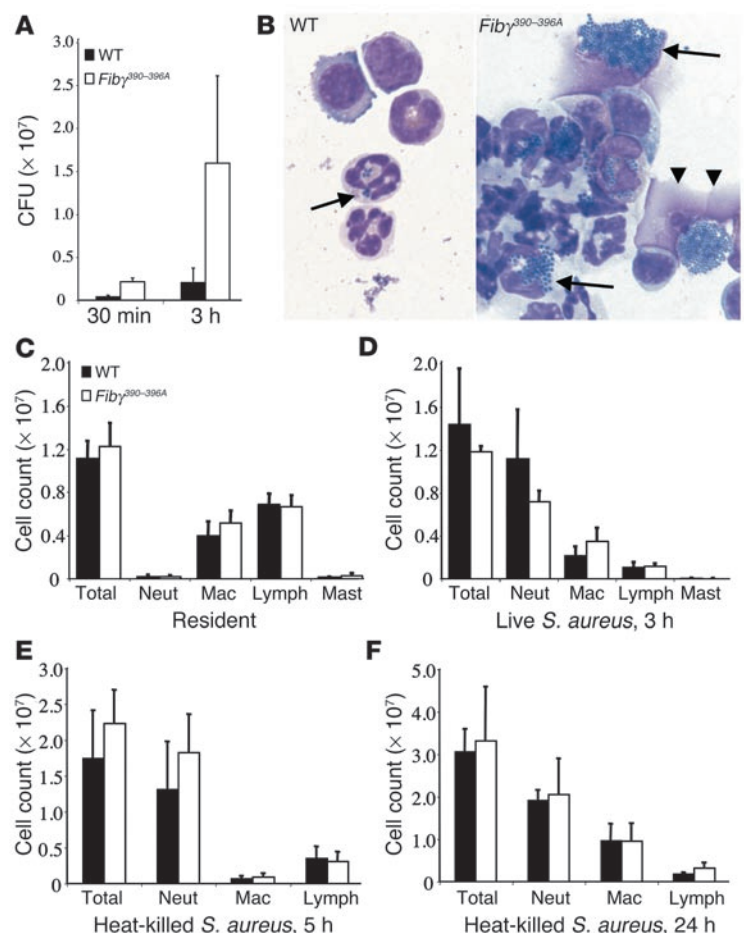
Discussion

The leukocyte integrins $\alpha_M\beta_2$ and $\alpha_L\beta_2$ are central mediators of leukocyte adhesion, transmigration, activation, and the expression of specialized functions. Despite the fact that these two integrins share an ability to bind certain ligands (e.g., ICAM-1), it is increasingly clear that these receptors are not functionally equivalent in their binding properties, both in terms of their repertoire of ligands and in terms of their differential binding to shared ligands (8, 10, 35, 36). These integrins seem to play complementary, albeit partially overlapping, roles in regulating leukocyte function (7, 8, 10, 11, 37-39). One obvious distinction between $\alpha_M\beta_2$ and $\alpha_L\beta_2$ is that the former integrin can engage immobilized fibrin(ogen) and other ligands that are not recognized by the latter receptor (36). To better understand the interplay between hemostatic factors and the inflammatory response in vivo and to spe-

cifically define the biological significance, if any, of $\alpha_M\beta_2$ engagement of fibrin(ogen), we genetically modified the endogenous fibrinogen γ chain gene in mice to selectively eliminate the $\alpha_M\beta_2$ -binding motif in the carboxy-terminal portion of the molecule. As an experimental approach to specifically discern the functional importance of the fibrinogen- $\alpha_M\beta_2$ interaction in vivo, the generation of this fibrinogen variant offered the distinct advantage of neither imposing any alteration in $\alpha_M\beta_2$ itself nor precluding $\alpha_M\beta_2$ interaction with other potential ligands or crosstalk with other receptors. Here we show that homozygous mice carrying the mutant fibrinogen $\gamma^{390-396A}$ allele are viable to adulthood, never experience spontaneous bleeding events, carry normal levels of circulating fibrinogen, maintain normal clotting function, retain normal fibrinogen engagement by other integrin receptors (e.g., $\alpha_{IIb}\beta_3$), retain normal platelet aggregation, and exhibit normal thrombus formation in vivo. Unlike WT fibrinogen, however, immobilized fibrinogen $\gamma^{390-396A}$ failed to support $\alpha_M\beta_2$ -mediated adhesion of a variety of cell types, including primary neutrophils and macrophages. Most importantly, the disruption in $\alpha_M\beta_2$ engagement of fibrin(ogen) was found to have dramatic consequences on the inflammatory response in vivo. *Fib γ ^{390-396A}* mice exhibited a remarkable impediment in the elimination of the microbial pathogen, *S. aureus*, in an acute peritonitis model. Four major conclusions are drawn from these studies. First, fibrin(ogen) is an important regulator of inflammatory cell function and innate immunity. Second, fibrin(ogen) constitutes a physiologically relevant ligand for the leukocyte integrin $\alpha_M\beta_2$. Third, the bio-

Figure 8

Time course analysis of *S. aureus* clearance and leukocyte trafficking within the peritoneal cavity of WT and *Fib γ ^{390-396A}* mice following intraperitoneal infection. (A) Higher levels of *S. aureus* in *Fib γ ^{390-396A}* mice relative to WT animals were appreciable 30 minutes after inoculation, and obvious differential expansion was apparent after 3 hours. $P < 0.02$, Mann-Whitney U test ($n = 5$ pairs). (B) Representative microscopic views of peritoneal lavage cytopins prepared at the 3-hour time point from WT (left) and *Fib γ ^{390-396A}* mice (right). Bacterial phagocytosis (arrows) was found in both genotypes, but few residual bacteria were found within WT mice. In contrast, leukocytes from mutant animals appeared overwhelmed with bacteria, which often led to phagocyte disruption (double arrowhead). (C-F) Total cell counts and leukocyte differentials within peritoneal lavage fluid from WT and *Fib γ ^{390-396A}* mice. Unchallenged mice (C) displayed no significant genotype-related difference in resident cells ($P \geq 0.5$, Mann-Whitney U test using four pairs). Three hours after infection (D) a major increase in neutrophil levels was observed in mice of both genotypes compared with naive mice (compare panels C and D), with a trend toward fewer total cells and fewer neutrophils in mutant mice ($P \approx 0.1$, Mann-Whitney U test using five pairs). However, comparison of WT and *Fib γ ^{390-396A}* mice challenged with heat-killed bacteria for 5 hours (E) or 24 hours (F) indicated that there was, if anything, an increase in total leukocyte and neutrophil accumulation in mutant mice ($P > 0.2$ for all comparisons between genotypes using a Mann-Whitney U test using five pairs). The data shown are means \pm SD. Neut, neutrophil; Mac, macrophage.





logical consequences of a loss in the $\alpha_M\beta_2$ -fibrin(ogen) interaction is not (fully) compensated by the continued availability of all other potential ligands (e.g., ICAM-1, iC3b, GPIb α , uPAR, etc). Finally, the biological importance of fibrinogen in regulating the inflammatory response can be appreciated outside of any alteration in either clotting function or platelet thrombus formation.

The specific inflammatory processes that are impeded in mice expressing fibrinogen $\gamma^{390-396A}$ remains to be fully defined, but a few inferences can be drawn based on the present and previous studies. Consistent with the observation that $\alpha_M\beta_2$ is not strictly required for efficient leukocyte trafficking in many inflammatory settings in vivo (7, 8), the loss of the $\alpha_M\beta_2$ -binding motif on fibrinogen did not restrict leukocyte trafficking in response to intraperitoneal bacteria, live or heat killed. A prevailing hypothesis consistent with the available data is that $\alpha_M\beta_2$ primarily controls leukocyte function upon arrival at sites of inflammatory challenge (7, 8, 11). A simple extension of this theory is that in the context of soluble inflammatory mediators, leukocyte engagement of immobilized fibrin(ogen) within inflamed and/or damaged tissues may be an important cue in leukocyte target recognition, ultimately regulating the expression of specialized functions. Consistent with this view, neutrophil engagement of fibrin(ogen) through $\alpha_M\beta_2$ results in dramatic cellular changes in vitro (15–18, 40–42), including calcium mobilization, activation of NF- κ B, increased phosphorylation events, degranulation, upregulation of cell surface adhesion molecules, increased migration, and decreased apoptosis. The concept that leukocyte interaction with immobilized fibrin(ogen) is an important event in target recognition has two attractive features. First, fibrin could provide a unique, nondiffusible or spatially defined signal modulating inflammatory cell function. Second, fibrin would be found within the ECM at virtually any site of tissue damage, regardless of the underlying insult, but would be distinctly absent within normal tissues. Thus, fibrin could provide a universal cue flagging the precise site of any challenge and provide another means to locally regulate leukocyte function. Of course, this theory does not preclude the seminal contribution of soluble inflammatory mediators (e.g., cytokines and chemokines) or a significant contribution of other $\alpha_M\beta_2$ ligands (e.g., iC3b). Nevertheless, the present studies show that even when the engagement of all other ligands remains intact, the loss of $\alpha_M\beta_2$ interaction with fibrin(ogen) compromises leukocyte function, including the ability to efficiently clear an infectious agent in vivo.

The present data show that in the context of intact fibrinogen the preeminent $\alpha_M\beta_2$ -binding motif is located in the carboxy-terminal portion of the γ chain. This region may not constitute the sole $\alpha_M\beta_2$ -binding element. Other regions, including the α_{AE} splice variant found in just 2% of plasma fibrinogen, might also contribute in vivo to $\alpha_M\beta_2$ binding (43). Presuming, however, that the fraction of fibrinogen carrying α_{AE} remains a constant feature of both WT and *Fib $\gamma^{390-396A}$* mice, any $\alpha_M\beta_2$ -binding potential conferred by the α_{AE} domain would appear to be comparatively poor relative to the contribution of the far more abundant standard γ chain.

Given that the $\alpha_M\beta_2$ -binding motif on fibrinogen is tied to the inflammatory response in vivo, then a question still unresolved is the relative importance of the many distinct forms of fibrin(ogen) in regulating leukocyte function, including (a) fibrin matrices (b) fibrinogen immobilized on cell surfaces by other specific receptors (e.g., $\alpha_v\beta_3$, $\alpha_5\beta_1$, $\alpha_{IIb}\beta_3$, ICAM-1), and (c) soluble fibrinogen. The fact that circulating leukocytes would be constantly exposed to high concentrations of fibrinogen would seem to preclude any obvious utility

of the soluble molecule in defining inflammatory processes. Furthermore, soluble fibrinogen is a relatively poor ligand for $\alpha_M\beta_2$ (20). The fact that neutrophils avidly engage surface-immobilized fibrinogen or fibrin by $\alpha_M\beta_2$ implies that these forms of fibrin(ogen) are likely to be the most instructive to inflammatory cells in vivo. Regardless of the relative importance of fibrin polymer formation, the present findings show that there are functional elements within fibrinogen that are relevant to the inflammatory response distinct from those critical for generating a provisional fibrin matrix.

While bacterial clearance is clearly inefficient in *Fib $\gamma^{390-396A}$* mice relative to control animals, there appears to be a significant residual capacity to eliminate microbes in the mutant animals. This residual capacity to control *S. aureus* may be a reflection of either $\alpha_M\beta_2$ -independent leukocyte activation pathways or $\alpha_M\beta_2$ -dependent signaling events mediated by alternative sites on fibrinogen and/or alternative ligands (e.g., bacterial opsonization with iC3b) (16, 44). The residual capacity to contain overt microbial challenges in *Fib $\gamma^{390-396A}$* mice is not surprising based on two previous observations. First, spontaneous infections are not commonplace in fibrinogen-null mice, at least when adaptive immunity remains intact (25). Second, while spontaneous infections are frequently observed in the absence of all β_2 integrins, these are not commonplace in the absence of just $\alpha_M\beta_2$ (5, 7, 45). Nevertheless, like *Fib $\gamma^{390-396A}$* mice, $\alpha_M\beta_2$ -deficient mice have been shown to exhibit a diminished ability to clear gram-positive pathogens (i.e., *Streptococcus pneumoniae*), and as a result $\alpha_M\beta_2$ -deficient mice exhibit increased mortality relative to control mice (39). Interestingly, this increased sensitivity to infection in $\alpha_M\beta_2$ -deficient mice was apparent despite the fact that these mice exhibited no diminution in leukocyte emigration in response to intraperitoneal inoculation of bacteria. Thus, neither $\alpha_M\beta_2$ nor its ligand, fibrin(ogen), are strictly required for leukocyte efflux, but both are important for efficient bacterial clearance.

Despite the fact that leukocyte emigration is generally maintained in $\alpha_M\beta_2$ -deficient mice following some inflammatory challenges, both $\alpha_M\beta_2$ and fibrin(ogen) may contribute to leukocyte trafficking in certain contexts, particularly when there is direct endothelial damage (46). In the absence of endothelial damage, $\alpha_1\beta_2$ -mediated engagement of endothelial cell ICAM-1 is likely to be dominant in supporting firm leukocyte adhesion and trafficking (10, 11). On the other hand, $\alpha_M\beta_2$ engagement of fibrin(ogen) may supercede $\alpha_1\beta_2$ engagement of ICAM-1 in supporting leukocyte trafficking in contexts involving frank endothelial denudation and secondary platelet/fibrin(ogen) deposition on the vessel wall (e.g., following balloon angioplasty) (46). Consistent with this view, $\alpha_M\beta_2$ is known to support the firm adhesion of neutrophils to surface-bound platelets under flow conditions in vitro, and this adhesion is fibrinogen dependent (47). Furthermore, adherent neutrophils have been shown to efficiently migrate through platelet monolayers in vitro (47). It seems likely that fibrinogen $\gamma^{390-396A}$ bound to platelet $\alpha_{IIb}\beta_3$ will not support neutrophil adhesion to surface-bound platelets. If so, then local leukocyte emigration in vivo may be significantly diminished in *Fib $\gamma^{390-396A}$* mice in the context of direct vascular injury.

One interesting facet of the finding that $\alpha_M\beta_2$ engagement of fibrin(ogen) supports host clearance of microbes is that bacterial pathogens have also evolved a variety of secretory and cell surface proteins that are designed to disrupt integrin function, engage fibrin(ogen), and/or promote fibrinolysis within vertebrate hosts. These bacterial factors presumably serve a variety of purposes, but undoubtedly all are designed to increase the success of the microbe at the expense of the host, and many may have evolved as counter-



measures to innate immune surveillance mechanisms. In addition to expressing the bacterial fibrinolytic agent, streptokinase, group A *Streptococcus* secrete a factor that is structurally similar to the α_M subunit of $\alpha_M\beta_2$, termed GAS-Mac, which increases bacterial virulence by inhibiting host phagocyte function (48). Similarly, *S. aureus* expresses an extraordinary array of factors designed to subvert the hemostatic system, including fibrinogen-binding proteins (e.g., ClfA), coagulase, and the fibrinolytic agent, staphylokinase (49, 50). Indeed, the expression of bacterial plasminogen activators is a particularly common theme among both gram-positive and gram-negative bacteria. Taken together, it appears that leukocyte engagement of fibrin(ogen) may constitute an important nexus of inflammatory cell action that bacterial pathogens seek to subvert through multiple mechanisms.

The finding that fibrin(ogen) can serve as a powerful inflammatory mediator has potential clinical implications. First, the fibrinogen-integrin axis can now be viewed as a potentially useful target in the development of new therapeutic strategies for the treatment or prevention of inflammatory diseases such as sepsis and inflammatory lung, bowel, and joint disease. Given that other hemostatic factors, including activated protein C (51), are also known to be promising focal points for controlling inflammatory processes, fibrinogen may be one of many coagulation system components that stand at the interface between the hemostatic and inflammatory systems. In fact, the potential utility of fibrinogen as a target in inflammatory disease has already been underscored in studies showing that the pharmacological depletion of fibrinogen in mice can diminish the progression of arthritis (52). Of course, an important second implication of the present study is that effective anti-

or proinflammatory strategies focusing on fibrin(ogen)-leukocyte interactions potentially could be devised that would not necessarily compromise hemostatic function. Thus, in principle, inflammatory responses could be controlled at the level of hemostatic factors without increasing the risk of bleeding or thrombotic events.

Acknowledgments

We thank Kathryn Talmage, Christine La Jeunesse, and Keith Kombrinck for their excellent technical assistance. We thank Joseph Palumbo for his helpful advice. We also thank Ronald E. Gordon and Norman Katz, Department of Pathology, Mount Sinai School of Medicine, New York, USA, for their help with scanning electron microscopy. Finally, we gratefully acknowledge the assistance of Heikki Vaananen, Department of Physiology and Biophysics, Mount Sinai School of Medicine. This work was supported by grants from the NIH to J.L. Degen (HL-63194), E.F. Plow (HL-66197), and M.J. Flick (T32HL-00742).

Received for publication December 5, 2003, and accepted in revised form March 30, 2004.

Address correspondence to: J.L. Degen, Children's Hospital Research Foundation, Developmental Biology - ML7007, Children's Hospital Research Foundation Room 2042, 3333 Burnet Avenue, Cincinnati, Ohio 45229-3039, USA. Phone: (513) 636-4679; Fax: (513) 636-4317; E-mail: degenjl@cchmc.org.

Matthew J. Flick and XinLi Du contributed equally to this work.

- Springer, T.A. 1994. Traffic signals for lymphocyte recirculation and leukocyte emigration: the multi-step paradigm. *Cell*. **76**:301-314.
- Anderson, D.C., Kishimoto, T.K., and Smith, C.W. 1995. Leukocyte adhesion deficiency and other disorders of leukocyte adherence and motility. In *The metabolic and molecular bases of inherited disease*. W.S. Sly, C.R. Scriver, A.L. Beaudet, and D. Valle, editors. McGraw-Hill. New York, New York, USA. 3955-3994.
- Larson, R.S., and Springer, T.A. 1990. Structure and function of leukocyte integrins. *Immunol. Rev.* **114**:181-217.
- Van der Vieren, M., et al. 1995. A novel leukointegrin, $\alpha\delta\beta_2$, binds preferentially to ICAM-3. *Immunology*. **3**:683-690.
- Coxon, A., et al. 1996. A novel role for the β_2 integrin CD11b/CD18 in neutrophil apoptosis: a homeostatic mechanism in inflammation. *Immunology*. **5**:653-666.
- Mizgerd, J.P., et al. 1997. Neutrophil emigration in the skin, lungs, and peritoneum: different requirements for CD11/CD18 revealed by CD18-deficient mice. *J. Exp. Med.* **186**:1357-1364.
- Lu, H., et al. 1997. LFA-1 is sufficient in mediating neutrophil emigration in Mac-1-deficient mice. *J. Clin. Invest.* **99**:1340-1350.
- Ding, Z.M., et al. 1999. Relative contribution of LFA-1 and Mac-1 to neutrophil adhesion and migration. *J. Immunol.* **163**:5029-5038.
- Walzog, B., Jeblonski, F., Zakrzewicz, A., and Gaehrgens, P. 1997. β_2 integrins (CD11/CD18) promote apoptosis of human neutrophils. *FASEB J.* **11**:1177-1186.
- Dunne, J.L., Ballantyne, C.M., Beaudet, A.L., and Ley, K. 2002. Control of leukocyte rolling velocity in TNF- α -induced inflammation by LFA-1 and Mac-1. *Blood*. **99**:336-341.
- Henderson, R.B., et al. 2001. The use of lymphocyte function-associated antigen (LFA)-1-deficient mice to determine the role of LFA-1, Mac-1, and α_4 integrin in the inflammatory response of neutrophils. *J. Exp. Med.* **194**:219-226.
- Plow, E.F., Haas, T.A., Zhang, L., Loftus, J., and Smith, J.W. 2000. Ligand binding to integrins. *J. Biol. Chem.* **275**:21785-21788.
- Forsyth, C.B., Solovjov, D.A., Ugarova, T.P., and Plow, E.F. 2001. Integrin $\alpha_M\beta_2$ -mediated cell migration to fibrinogen and its recognition peptides. *J. Exp. Med.* **193**:1123-1133.
- Languino, L.R., et al. 1993. Fibrinogen mediates leukocyte adhesion to vascular endothelium through an ICAM-1-dependent pathway. *Cell*. **73**:1423-1434.
- Shi, C., Zhang, X., Chen, Z., Robinson, M.K., and Simon, D.I. 2001. Leukocyte integrin Mac-1 recruits toll/interleukin-1 receptor superfamily signaling intermediates to modulate NF- κ B activity. *Circ. Res.* **89**:859-865.
- Rubel, C., et al. 2001. Fibrinogen promotes neutrophil activation and delays apoptosis. *J. Immunol.* **166**:2002-2010.
- Rubel, C., et al. 2002. Soluble fibrinogen modulates neutrophil functionality through the activation of an extracellular signal-regulated kinase-dependent pathway. *J. Immunol.* **168**:3527-3535.
- Smiley, S.T., King, J.A., and Hancock, W.W. 2001. Fibrinogen stimulates macrophage chemokine secretion through toll-like receptor 4. *J. Immunol.* **167**:2887-2894.
- Loike, J.D., et al. 1992. The role of protected extracellular compartments in interactions between leukocytes, and platelets, and fibrin/fibrinogen matrices. *Ann. N. Y. Acad. Sci.* **667**:163-172.
- Lishko, V.K., Kudryk, B., Yakubenko, V.P., Yee, V.C., and Ugarova, T.P. 2002. Regulated unmasking of the cryptic binding site for integrin $\alpha_M\beta_2$ in the γ C-domain of fibrinogen. *Biochemistry*. **41**:12942-12951.
- Ugarova, T.P., et al. 1998. Identification of a novel recognition sequence for integrin $\alpha_M\beta_2$ within the γ -chain of fibrinogen. *J. Biol. Chem.* **273**:22519-22527.
- Ugarova, T.P., et al. 2003. Sequence γ 377-395(P2), but not γ 190-202(P1), is the binding site for the α_M I-domain of integrin $\alpha_M\beta_2$ in the γ C-domain of fibrinogen. *Biochemistry*. **42**:9365-9373.
- Holmbäck, K., Danton, M.J., Suh, T.T., Daugherty, C.C., and Degen, J.L. 1996. Impaired platelet aggregation and sustained bleeding in mice lacking the fibrinogen motif bound by integrin $\alpha_{IIb}\beta_3$. *EMBO J.* **15**:5760-5771.
- Hooper, M., Hardy, K., Handyside, A., Hunter, S., and Monk, M. 1987. HPRT-deficient (Lesch-Nyhan) mouse embryos derived from germline colonization by cultured cells. *Nature*. **326**:292-295.
- Suh, T.T., et al. 1995. Resolution of spontaneous bleeding events but failure of pregnancy in fibrinogen-deficient mice. *Genes Dev.* **9**:2020-2033.
- Farrell, D.H., and Thiagarajan, P. 1994. Binding of recombinant fibrinogen mutants to platelets. *J. Biol. Chem.* **269**:226-231.
- Jirousková, M., Cheresnev, I., Vaananen, H., Degen, J.L., and Collier, B.S. 2004. Antibody blockade or mutation of the fibrinogen γ chain C-terminus are more effective in inhibiting murine arterial thrombus formation than complete absence of fibrinogen. *Blood*. **103**:1995-2002.
- Zhang, L., and Plow, E.F. 1996. Overlapping, but not identical, sites are involved in the recognition of C3bi, neutrophil inhibitory factor, and adhesive ligands by the $\alpha_M\beta_2$ integrin. *J. Biol. Chem.* **271**:18211-18216.
- Kumagai, K., Itoh, K., Hinuma, S., and Tada, M. 1979. Pretreatment of plastic Petri dishes with fetal calf serum. A simple method for macrophage isolation. *J. Immunol. Methods*. **29**:17-25.
- Adams, D.O., Edelson, P.J., and Koren, H.S. 1981. *Methods for studying mononuclear phagocytes*. Academic Press. New York, New York, USA. xxiv, 1023 pp.
- Doolittle, R.F., Yang, Z., and Mochalkin, I. 2001. Crystal structure studies on fibrinogen and fibrin. *Ann. N. Y. Acad. Sci.* **936**:31-43.
- Wright, S.D., et al. 1988. Complement receptor type three (CD11b/CD18) of human polymor-



- phonuclear leukocytes recognizes fibrinogen. *Proc. Natl. Acad. Sci. U. S. A.* **85**:7734–7738.
33. Altieri, D.C., Plescia, J., and Plow, E.F. 1993. The structural motif glycine 190-valine 202 of the fibrinogen γ chain interacts with CD11b/CD18 integrin (α M β 2, Mac-1) and promotes leukocyte adhesion. *J. Biol. Chem.* **268**:1847–1853.
34. Zhang, L., and Plow, E.F. 1997. Identification and reconstruction of the binding site within α M β 2 for a specific and high affinity ligand, NIF. *J. Biol. Chem.* **272**:17558–17564.
35. Diamond, M.S., et al. 1990. ICAM-1 (CD54): a counter-receptor for Mac-1 (CD11b/CD18). *J. Cell Biol.* **111**:3129–3139.
36. Yakubenko, V.P., Lishko, V.K., Lam, S.C., and Ugarova, T.P. 2002. A molecular basis for integrin α M β 2 ligand binding promiscuity. *J. Biol. Chem.* **277**:48635–48642.
37. Gregory, S.H., et al. 2002. Complementary adhesion molecules promote neutrophil-Kupffer cell interaction and the elimination of bacteria taken up by the liver. *J. Immunol.* **168**:308–315.
38. Miyamoto, M., et al. 2003. Neutrophilia in LFA-1-deficient mice confers resistance to listeriosis: possible contribution of granulocyte-colony-stimulating factor and IL-17. *J. Immunol.* **170**:5228–5234.
39. Prince, J.E., et al. 2001. The differential roles of LFA-1 and Mac-1 in host defense against systemic infection with *Streptococcus pneumoniae*. *J. Immunol.* **166**:7362–7369.
40. Sitrin, R.G., Pan, P.M., Srikanth, S., and Todd, R.F., 3rd. 1998. Fibrinogen activates NF- κ B transcription factors in mononuclear phagocytes. *J. Immunol.* **161**:1462–1470.
41. Szaba, F.M., and Smiley, S.T. 2002. Roles for thrombin and fibrin(ogen) in cytokine/chemokine production and macrophage adhesion in vivo. *Blood.* **99**:1053–1059.
42. Takami, M., Terry, V., and Petruzzelli, L. 2002. Signaling pathways involved in IL-8-dependent activation of adhesion through Mac-1. *J. Immunol.* **168**:4559–4566.
43. Lishko, V.K., Yakubenko, V.P., Hertzberg, K.M., Grieninger, G., and Ugarova, T.P. 2001. The alternatively spliced α E C domain of human fibrinogen-420 is a novel ligand for leukocyte integrins α M β 2 and α X β 2. *Blood.* **98**:2448–2455.
44. Gordon, D.L., Rice, J., Finlay-Jones, J.J., McDonald, P.J., and Hostetter, M.K. 1988. Analysis of C3 deposition and degradation on bacterial surfaces after opsonization. *J. Infect. Dis.* **157**:697–704.
45. Scharffetter-Kochanek, K., et al. 1998. Spontaneous skin ulceration and defective T cell function in CD18 null mice. *J. Exp. Med.* **188**:119–131.
46. Simon, D.I., et al. 2000. Decreased neointimal formation in Mac-1(-/-) mice reveals a role for inflammation in vascular repair after angioplasty. *J. Clin. Invest.* **105**:293–300.
47. Diacovo, T.G., Roth, S.J., Buccola, J.M., Bainton, D.F., and Springer, T.A. 1996. Neutrophil rolling, arrest, and transmigration across activated, surface-adherent platelets via sequential action of P-selectin and the β 2-integrin CD11b/CD18. *Blood.* **88**:146–157.
48. Lei, B., et al. 2001. Evasion of human innate and acquired immunity by a bacterial homolog of CD11b that inhibits opsonophagocytosis. *Nat. Med.* **7**:1298–1305.
49. Moreillon, P., et al. 1995. Role of *Staphylococcus aureus* coagulase and clumping factor in pathogenesis of experimental endocarditis. *Infect. Immun.* **63**:4738–4743.
50. McDevitt, D., et al. 1997. Characterization of the interaction between the *Staphylococcus aureus* clumping factor (ClfA) and fibrinogen. *Eur. J. Biochem.* **247**:416–424.
51. Esmon, C.T. 2002. Protein C pathway in sepsis. *Ann. Med.* **34**:598–605.
52. Busso, N., et al. 1998. Exacerbation of antigen-induced arthritis in urokinase-deficient mice. *J. Clin. Invest.* **102**:41–50.