

When Defense Pathways Collide. The Response of Arabidopsis to a Combination of Drought and Heat Stress^{1[w]}

Ludmila Rizhsky, Hongjian Liang, Joel Shuman, Vladimir Shulaev, Sholpan Davletova, and Ron Mittler*

Department of Biology, Technion, Israel Institute of Technology, Technion City, Haifa 32000, Israel (L.R.); Department of Botany, Plant Sciences Institute, Iowa State University, Ames, Iowa 50011 (H.L.); Virginia Bioinformatics Institute, Blacksburg, Virginia 24061 (J.S., V.S.); Department of Biochemistry, University of Nevada, Reno, Nevada 89557 (S.D., R.M.)

Within their natural habitat, plants are subjected to a combination of abiotic conditions that include stresses such as drought and heat. Drought and heat stress have been extensively studied; however, little is known about how their combination impacts plants. The response of Arabidopsis plants to a combination of drought and heat stress was found to be distinct from that of plants subjected to drought or heat stress. Transcriptome analysis of Arabidopsis plants subjected to a combination of drought and heat stress revealed a new pattern of defense response in plants that includes a partial combination of two multigene defense pathways (i.e. drought and heat stress), as well as 454 transcripts that are specifically expressed in plants during a combination of drought and heat stress. Metabolic profiling of plants subjected to drought, heat stress, or a combination of drought and heat stress revealed that plants subject to a combination of drought and heat stress accumulated sucrose and other sugars such as maltose and gulose. In contrast, Pro that accumulated in plants subjected to drought did not accumulate in plants during a combination of drought and heat stress. Heat stress was found to ameliorate the toxicity of Pro to cells, suggesting that during a combination of drought and heat stress sucrose replaces Pro in plants as the major osmoprotectant. Our results highlight the plasticity of the plant genome and demonstrate its ability to respond to complex environmental conditions that occur in the field.

The study of abiotic stress in plants has advanced considerably in recent years. However, the majority of experiments testing the response of plants to changes in environmental conditions have focused on a single stress treatment applied to plants under controlled conditions. In contrast, in the field, a number of different stresses can occur simultaneously. These may include conditions such as high irradiance, low water availability, extreme temperature, or high salinity and may alter plant metabolism in a novel manner that may be different from that caused by each of the different stresses applied individually. The response of plants to abiotic stresses in the field may therefore be very different from that tested in the laboratory (Cushman and Bohnert, 2000; Mittler et al., 2001; Zhu, 2002).

Drought and heat stress represent an excellent example of two different abiotic stresses that occur in the field simultaneously, especially in semi-arid or drought-stricken areas (Mittler et al., 2001; Moffat, 2002; Rizhsky et al., 2002). Although drought and heat stress have been extensively studied (Vierling, 1991; Ingram and Bartels, 1996; Shinozaki and Yamaguchi-Shinozaki, 1996; Miernyk, 1999; Queitsch et al., 2000), relatively little is known about how their combination impacts plants. A number of studies examined the effect of a combination of drought and heat stress on the growth and productivity of maize, barley, sorghum, and different grasses. It was found that a combination of drought and heat stress had a significantly higher detrimental effect on the growth and productivity of these plants and crops compared to each of the different stresses applied individually (Savage and Jacobson, 1935; Craufurd and Peacock, 1993; Savin and Nicolas, 1996). In maize, resistance to a combination of drought and heat stress is a well-known breeding target (Heyne and Brunson, 1940). Furthermore, a combination of drought and heat stress was found to alter the physiological status of grasses and other plants, to inhibit photosynthesis, and to result in the accumulation of end products of lipid peroxidation (Perdomo et al., 1996; Jagtap et al., 1998; Jiang and Huang, 2001).

¹ This work was supported by funding from the Plant Sciences Institute at Iowa State University, the Biotechnology Council of Iowa State University, the College of Liberal Arts and Sciences at Iowa State University, the Israeli Academy of Science, the Nevada Agricultural Experimental Station (publication no. 03031333), and the Fund for the Promotion of Research at the Technion.

* Corresponding author; e-mail ronm@unr.edu; fax 775-784-1419.

^[w] The online version of this article contains Web-only data.

Article, publication date, and citation information can be found at www.plantphysiol.org/cgi/doi/10.1104/pp.103.033431.

Initial studies in tobacco suggested that the molecular response of plants to a combination of drought and heat stress is distinct from that of plants subjected to each of these stresses applied individually. Thus, the steady-state level of a number of transcripts, elevated during drought or heat stress, was reduced during a combination of drought and heat stress, and a small number of transcripts were specifically expressed during a combination of drought and heat stress (Rizhsky et al., 2002). Despite these findings, the number of transcripts tested in tobacco was relatively small (170 transcripts), and the scale of the plant's response to this stress combination remained largely unknown.

In this study we performed an initial analysis of the molecular and metabolic response of Arabidopsis to a combination of drought and heat stress. Our study revealed a new pattern of defense response in plants that includes a partial combination of two multigene defense pathways (drought and heat stress), as well as 454 transcripts that are specifically expressed in cells during a combination of drought and heat stress. In addition, plants subjected to a combination of drought and heat stress accumulated high levels of sucrose and other sugars, but did not accumulate Pro.

RESULTS

Physiological and Molecular Characterization of Arabidopsis Plants Subjected to a Combination of Drought and Heat Stress

A combination of drought and heat stress was imposed on plants according to Rizhsky et al. (2002; Fig. 1A). As shown in Figure 1, the physiological and molecular response of Arabidopsis to a combination of drought and heat stress was very similar to that of tobacco (Rizhsky et al., 2002). Figure 1, B and C, shows that heat stress was accompanied by enhanced respiration and opening of stomata, whereas drought was accompanied by suppression of photosynthesis and closure of stomata (all measurements were performed with a Li-Cor 6400 [Li-Cor, Lincoln, NE] and refer therefore to rates of CO₂ exchange between the leaf and the LI-6400-leaf chamber). In contrast, a combination of drought and heat stress resulted in the simultaneous enhancement of respiration and suppression of photosynthesis. Compared to tobacco, we could not, however, find a significant difference between the leaf temperature of plants subjected to heat stress or a combination of drought and heat stress

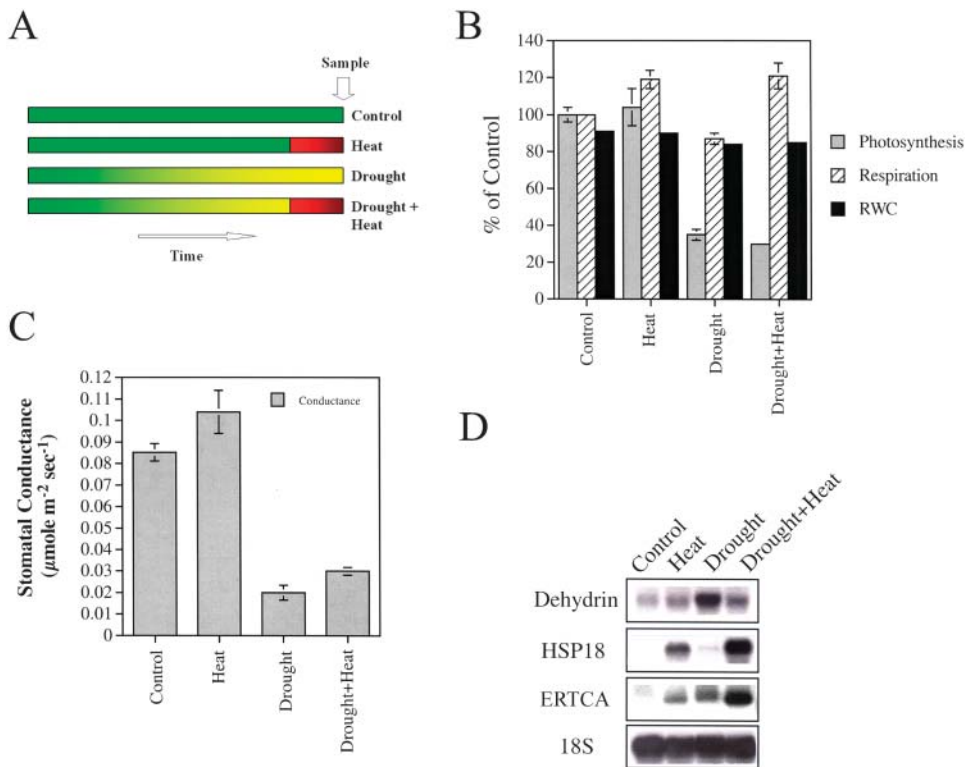


Figure 1. Physiological and molecular characterization of Arabidopsis plants subjected to a combination of drought and heat stress. Plants were subjected to heat stress, drought, or a combination of heat stress and drought, as described in "Materials and Methods." Results are presented as mean and standard deviation of three individual measurements. A, The experimental design for applying a combination of drought and heat stress to Arabidopsis. This design attempts to mimic the conditions that occur in the field in which a relatively prolonged period of drought (yellow) is accompanied by a brief period of heat stress (red; usually during midday to early afternoon). B, Photosynthetic activity and dark respiration, measured with a Li-Cor LI-6400 apparatus. C, Stomatal conductance, measured with a Li-Cor LI-6400 apparatus. D, Steady-state level of stress-response transcripts, measured by RNA gel blots. Ribosomal RNA (18S) was used to control for equal loading of RNA.

(data not shown; Rizhsky et al., 2002). It should, however, be noted that although the same instrument was used to measure leaf temperature in both cases (i.e. a LI-6400), the variability in the measurements obtained with the smaller leaf of Arabidopsis was higher than that obtained with the larger tobacco leaf. In addition, the stomatal conductance of Arabidopsis leaves subjected to a combination of drought and heat stress (Fig. 1C) was not as low as that of tobacco (Rizhsky et al., 2002), suggesting that Arabidopsis plants might have been able to cool their leaves, at least partially, under the conditions used in our assay.

RNA-blot analysis using cDNA probes with a known expression pattern during a combination of drought and heat stress in tobacco (Rizhsky et al., 2002) revealed that, at least with these transcripts, a similar expression pattern could be found between Arabidopsis and tobacco (Fig. 1D). Thus, the steady-state level of transcripts encoding a specific dehydrin, that was elevated during drought, was not elevated to the same degree during a combination of drought and heat stress, and the steady-state level of transcripts encoding a specific small heat shock protein (HSP18) and an ethylene-response transcriptional coactivator (ERTCA) was strongly elevated during a combination of drought and heat stress.

Transcriptome Profiling of Arabidopsis Plants Subjected to a Combination of Drought and Heat Stress

To examine changes in steady-state transcript level in leaves of Arabidopsis plants subjected to drought, heat stress, or their combination, we performed a transcriptome analysis of leaves using DNA arrays (ATH1 chips; Affymetrix, Santa Clara, CA). As shown in Figure 2, there was very little similarity between the response of Arabidopsis to drought or heat stress. Out of 1,075 transcripts elevated during drought and 262 transcripts elevated during heat stress (cutoff of 1.5-fold \log_2), an overlap of only 29 transcripts was found. Similarly, an overlap of only 48 transcripts was observed between 496 and 279 transcripts decreased during drought or heat stress, respectively (cutoff of 1.5-fold \log_2). Compared to nonstressed plants, the steady-state level of 1,057 transcripts was elevated and the steady-state level of 776 transcripts was decreased during a combination of drought and heat stress. Out of the transcripts elevated during a combination of drought and heat stress, 479 were also elevated during drought and 153 were also elevated during heat stress (with a 29-transcript overlap). In addition to transcripts elevated in plants during drought or heat stress, the transcriptome of plants subjected to a combination of drought and heat stress contained 454 transcripts that were specifically elevated by this stress combination (cutoff of 1.5-fold \log_2). A similar situation was observed with transcripts decreased in plants during a combination of drought and heat stress, with 318 transcripts specifically decreased dur-

ing this stress combination (Fig. 2). The transcriptome of plants subjected to a combination of drought and heat stress was therefore different from that of plants subjected to heat or drought stress.

Table I shows the transcripts elevated in Arabidopsis subjected to a combination of drought and heat stress. Due to space limitations we included in the table only transcripts that were elevated fourfold or higher (cutoff of 2 \log_2). Additional tables listing transcripts elevated or decreased during drought, heat stress, or their combination (compared to control) can be found in the supplemental material to this manuscript (see www.plantphysiol.org). The table is divided and grouped into sections to represent transcripts elevated during a combination of drought and heat stress as well as drought or heat stress (A), transcripts elevated during a combination of drought and heat stress as well as heat stress (B), transcripts elevated during a combination of drought and heat stress as well as drought (C), and transcripts specifically elevated during a combination of drought and heat stress (D).

Among the transcripts elevated during a combination of drought and heat stress as well as heat stress (B) were many transcripts encoding mitochondrial proteins such as different subunits of NADH dehydrogenase and cytochrome c oxidase. The expression of these transcripts correlated with the enhanced respiratory activity detected in plants subjected to heat stress or a combination of drought and heat stress (Fig. 1B). As expected, the expression of a large number of transcripts encoding HSPs was elevated during a combination of drought and heat stress. However, not all HSPs elevated during heat stress were also elevated during drought or a combination of drought and heat stress. Thus, the steady-state level of 4 transcripts encoding HSPs was specifically elevated

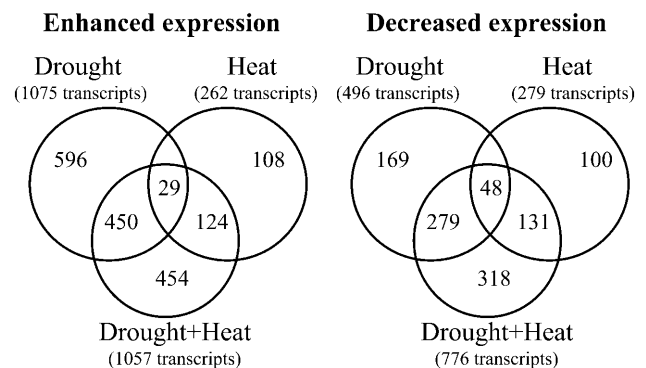


Figure 2. Venn diagrams showing the number of transcripts enhanced (left) or decreased (right) in plants in response to drought, heat stress, or a combination of drought and heat stress (compared to control nonstressed plants). Only transcripts with an increase or decrease in steady-state level of 1.5-fold (\log_2) over control unstressed plants are included. Results are presented as average of three independent experiments. RNA isolation and Affymetrix chip analysis were performed as described in "Materials and Methods."

Table I. *Transcripts elevated in leaves of Arabidopsis plants subjected to a combination of drought and heat stress*

Gene No.	Transcript Name	Avg.	SD
<i>Section A</i>			
At3g46230	Heat shock protein 17	9.7	1.7
At3g12580	Heat shock protein 70	7.5	1.5
At5g48570	Peptidylprolyl isomerase	5.9	0.4
At5g59220	ABA-induced protein phosphatase 2C	5.3	0.2
At3g24500	Ethylene-responsive transcriptional coactivator	4.3	0.4
At2g47180	Galactinol synthase	3.8	0.3
At3g53230	CDC48-like endoplasmic reticulum ATPase	3.6	0.5
At3g16360	Putative two-component phosphorelay mediator	3.0	0.2
At1g65660	Step II splicing factor SLU7	2.9	0.1
At3g24520	Heat shock transcription factor HSF1	2.9	0.2
At3g07770	Putative heat shock protein	2.6	0.3
At1g22770	Putative gigantea protein	2.5	0.1
At4g22590	Trehalose-6-phosphate phosphatase	2.5	0.2
At5g28540	Luminal binding protein	2.1	0.1
<i>Section B</i>			
At5g59720	Heat shock protein 18	10.0	0.6
At4g25200	Mitochondrion-small heat shock protein	9.9	0.6
At4g27670	Heat shock protein 21	9.5	0.3
At1g53540	17.6-kD Heat shock protein	9.0	1.2
At5g12020	Heat shock protein 17.6-II	8.9	0.4
At5g12030	Heat shock protein 17.6A	8.3	1.8
At4g10250	Heat shock protein 22.0	7.3	1.3
At2g29500	Putative small heat shock protein	6.5	0.2
AtMg00520	Maturase	5.8	1.3
At3g09640	Putative ascorbate peroxidase	5.7	0.6
At1g74310	Heat shock protein 101 (HSP101)	5.5	0.3
At5g12110	Elongation factor 1B alpha-subunit	5.1	0.7
At4g03320	Putative chloroplast import component	5.0	0.5
At5g52640	Heat shock protein	5.0	0.1
At1g62510	Similar to 14-kD Pro-rich protein	4.7	0.1
AtMg00160	Cytochrome c oxidase subunit 2	4.4	0.3
At1g72660	Putative GTP-binding protein	4.4	0.3
At2g32120	70-kD Heat shock protein	4.2	0.2
AtMg00513	NADH dehydrogenase subunit 5	4.2	0.3
AtMg00270	NADH dehydrogenase subunit 6	4.1	0.5
AtMg01360	Cytochrome c oxidase subunit 1	3.8	0.2
At2g20560	Putative heat shock protein	3.5	0.3
At4g18280	Gly-rich cell wall protein	3.5	0.1
AtMg00650	NADH dehydrogenase subunit 4L	3.4	0.1
At5g37670	Cytosolic class I small heat shock protein	3.3	0.1
AtMg00960	Cytochrome c biogenesis	3.3	0.2
At1g07350	Transformer-SR ribonucleoprotein	3.2	0.2
At5g25450	Ubiquinol-cytochrome-c reductase	3.2	0.2

Table I. *(Continued.)*

Gene No.	Transcript Name	Avg.	SD
At3g48520	Cytochrome P450-like protein	2.7	0.1
At1g26580	Putative MYB family transcription factor	2.7	0.3
At5g67080	Protein kinase-like protein	2.7	0.7
At1g09140	Putative SF2/ASF splicing modulator	2.6	0.1
At5g58590	Ran binding protein 1 homolog	2.6	0.1
AtMg00090	Ribosomal protein L16	2.5	0.1
At3g13470	Chaperonin 60 beta	2.5	0.1
At1g09950	Similar to Nicotiana tumor-related protein	2.4	0.1
At3g04000	Short-chain type dehydrogenase/reductase	2.4	0.1
AtMg01080	ATP synthase subunit 9	2.3	0.1
At4g36010	Thaumatin-like protein	2.3	0.1
At3g59350	Pto kinase interactor 1	2.3	0.1
At5g14800	Pyrraline-5-carboxylate reductase	2.2	0.1
At5g58070	Outer membrane lipoprotein	2.2	0.1
At1g56340	Calreticulin (crt1)	2.1	0.1
AtMg00180	Cytochrome c biogenesis	2.0	0.1
<i>Section C</i>			
At5g06760	Late embryogenesis abundant protein	8.9	0.1
At5g59310	Nonspecific lipid-transfer protein precursor	8.4	0.3
At1g22990	Putative metal-binding protein	8.0	1.0
At5g13170	Senescence-associated protein (SAG29)	7.5	0.7
At3g02480	Unknown protein similar to pollen coat protein	7.2	0.8
At1g17020	Fe(II)/ascorbate oxidase	6.6	0.6
At5g59320	Nonspecific lipid-transfer protein precursor	6.5	0.1
At1g52690	Late embryogenesis-abundant protein	6.1	0.2
At5g66400	Dehydrin RAB18-like protein	5.7	0.1
At3g17520	Unknown protein identical to LEA-like protein	5.3	0.6
At1g05100	Putative NPK1-related MAP kinase	5.1	0.2
At1g07430	Protein phosphatase 2C	4.9	0.5
At5g52300	Low-temperature-induced 65-kD protein	4.8	1.0
At2g46680	Homeodomain transcription factor (ATHB-7)	4.6	0.3
At5g29000	Putative CDPK substrate protein 1	4.3	0.7
At3g22840	Early light-induced protein	4.3	0.3
At1g64660	Met/cystathionine gamma lyase	4.2	0.3
At5g56500	Rubisco chaperonin, 60 kD	4.1	0.4
At5g25110	Ser/Thr protein kinase-like protein	4.0	0.8
At3g60350	Arm repeat containing protein	3.7	0.7
At1g70300	Potassium transporter	3.7	0.1
At1g02205	Lipid transfer protein	3.7	0.3
At2g15480	Putative glucosyltransferase	3.6	0.7
At1g56600	Water stress-induced protein	3.6	0.2
At1g54100	Aldehyde dehydrogenase	3.5	0.1
At5g05410	DREB2A	3.5	0.2
At4g15910	Drought-induced protein-like	3.5	0.2

(Table continues on following page.)

Table I. (Continued from previous page.)

Gene No.	Transcript Name	Avg.	SD
At1g03940	Anthocyanin 5-aromatic acyltransferase	3.5	0.2
At1g62570	Flavin-containing monooxygenase	3.4	0.3
At4g33150	Lys-ketoglutarate reductase/saccharopine	3.4	0.2
At1g02205	Receptor-like protein glossy1	3.4	0.4
At1g57590	Pectinacetyltransferase precursor	3.3	0.2
At1g61800	Glucose-6-phosphate/phosphate-translocator	3.3	0.2
At2g43590	Putative endochitinase	3.3	0.1
At5g37540	Nucleoid DNA-binding protein	3.2	0.1
At1g62290	Aspartic protease	3.2	0.1
At5g53870	Phytocyanin/early nodulin-like protein	3.2	0.1
At5g18820	Chaperonin 60 alpha chain	3.1	0.7
At1g06430	FtsH zinc dependent protease	3.1	0.3
At4g35940	Putative Glu-rich protein	3.1	0.9
At5g52310	Low-temperature-induced protein 78	3.1	0.2
At3g57520	Probable imbibition protein	3.1	0.1
At2g46270	G-box binding bZIP transcription factor	3.1	0.3
At1g21400	Alpha keto-acid dehydrogenase	3.1	0.1
At4g20320	CTP synthase-like protein	3.0	0.8
At3g55610	Delta-1-pyrroline-5-carboxylate synthetase	3.0	0.1
At2g33380	Putative calcium-binding EF-hand protein	3.0	0.1
At2g33590	Putative cinnamoyl-CoA reductase	2.9	0.1
At2g21590	Putative ADP-glucose pyrophosphorylase	2.9	0.3
At5g09590	Heat shock protein 70 (Hsc70-5)	2.9	0.3
At3g57540	Putative DNA binding protein	2.8	0.2
At4g24000	Cellulose synthase catalytic subunit	2.8	0.7
At5g14270	Kinase-like RING3 protein	2.8	0.3
At1g73040	Jacalin	2.8	0.4
At4g35580	NAM/CUC2-like protein	2.8	0.5
At3g13672	Seven in absentia-like protein	2.8	0.2
At2g04030	Putative heat shock protein	2.7	0.1
At1g51140	Similar to phytochrome interacting factor 3	2.7	0.1
At3g61890	Homeobox-Leu zipper protein ATHB-12	2.7	0.2
At1g56650	Anthocyanin2	2.7	0.2
At5g04530	Fatty acid elongase 3-ketoacyl-CoA synthase	2.6	0.4
At3g50970	Dehydrin Xero2	2.6	0.1
At4g12280	Copper amine oxidase-like	2.6	0.2
At3g05650	Putative disease resistance protein	2.6	0.1

Table I. (Continued.)

Gene No.	Transcript Name	Avg.	SD
At2g16890	Putative glucosyltransferase	2.6	0.4
At1g52890	Similar to NAM (no apical meristem)	2.6	0.0
At2g18050	Histone H1	2.6	0.2
At3g05640	Putative protein phosphatase-2C	2.6	0.3
At4g21650	Subtilisin proteinase	2.5	0.3
At1g11480	Similar to eukaryotic initiation factor 4B	2.5	0.1
At5g22290	NAM (no apical meristem)-like protein	2.5	0.4
At1g72770	Protein phosphatase 2C (AtP2C-HA)	2.5	0.2
At3g05660	Putative disease resistance protein	2.5	0.4
At5g57050	Protein phosphatase 2C ABI2	2.5	0.3
At5g40760	Glucose-6-phosphate dehydrogenase	2.5	0.3
At4g34000	ABA responsive elements-binding factor (3)	2.5	0.3
At4g19600	Putative protein cyclin C	2.5	0.2
At5g15450	HSP100/ClpB	2.5	0.2
At1g11840	Lactoylglutathione lyase-like protein	2.5	0.0
At5g42800	Dihydroflavonol 4-reductase	2.5	0.1
At1g22370	UDP-glucose glucosyltransferase	2.4	0.2
At5g63370	Protein kinase	2.4	0.1
At1g36730	Eukaryotic translation initiation factor 5	2.4	0.1
At3g08860	Beta-Ala-pyruvate aminotransferase	2.4	0.2
At5g01600	Ferritin 1 precursor	2.4	0.0
At3g52850	Vacuolar sorting receptor homolog/AtELP1	2.4	0.1
At4g17030	Allergen-like protein	2.4	0.1
At5g05110	Cys proteinase inhibitor-like protein	2.4	0.1
At3g25230	Rotamase FKBP (ROF1)	2.3	0.3
At3g23920	Beta-amylase	2.3	0.1
At2g29630	Putative thiamin biosynthesis protein	2.3	0.1
At2g20330	Putative WD-40 repeat protein	2.3	0.2
At4g23050	Ser/Thr kinase MAP3K	2.3	0.4
At4g39210	Glucose-1-phosphate adenylyltransferase	2.3	0.2
At2g29300	Putative tropinone reductase	2.3	0.3
At5g25390	AP2 domain containing protein	2.3	0.1
At2g47470	Putative protein disulfide-isomerase	2.2	0.2
At3g59820	Leu zipper-EF-hand protein	2.2	0.2
At5g60360	Cys proteinase	2.2	0.1
At4g30470	Cinnamoyl-CoA reductase	2.2	0.2
At4g35300	Putative sugar transporter protein	2.2	0.2
At3g19100	CDPK-related kinase	2.2	0.2

(Table continues on following page.)

Table I. (Continued from previous page.)

Gene No.	Transcript Name	Avg.	SD
At5g65260	Poly(A)-binding protein II-like	2.2	0.4
At5g23050	Acetyl-CoA synthetase-like protein	2.2	0.3
At5g07920	Diacylglycerol kinase (ATDGK1)	2.2	0.2
At4g04020	Putative fibrillin	2.2	0.1
At3g20500	Purple acid phosphatase	2.1	0.1
At1g67360	Stress-related protein	2.1	0.1
At5g53120	Spermidine synthase	2.1	0.1
At4g19230	Cytochrome P450	2.1	0.1
At1g64550	ABC transporter protein	2.1	0.2
At1g62710	Beta-VPE	2.1	0.1
At5g24800	Transcription factor light-induced CPRF-2	2.1	0.3
At1g48000	myb-related transcription factor	2.1	0.6
At1g73680	Feebly-like protein	2.1	0.2
At5g48030	DnaJ protein-like	2.1	0.2
At1g30500	Transcription factor	2.0	0.2
At5g62190	RNA helicase	2.0	0.1
At1g56170	Transcription factor	2.0	0.0
At1g79560	FtsH protease, chloroplast	2.0	0.1
At3g06400	Putative ATPase (ISW2-like)	2.0	0.2
At3g11270	26S proteasome regulatory subunit S12	2.0	0.1
At1g64140	Similar to putative disease resistance protein	2.0	0.1
At5g10930	Ser/Thr protein kinase SNFL3	2.0	0.1
At5g51070	ATP-dependent Clp protease (ClpD)	2.0	0.1
At5g02620	Ankyrin-like protein	2.0	0.4
At3g19170	Metalloprotease 1	2.0	0.1
At5g53400	Similar to nuclear movement protein nudC	2.0	0.1
At4g23670	Putative major latex protein 1	2.0	0.1
At4g30490	Putative ATPase	2.0	0.4
At5g17220	Glutathione S-transferase	2.0	0.1
At4g35790	Putative protein phospholipase D	2.0	0.3
At1g52560	Chloroplast-small heat shock protein	6.7	0.8
At1g71000	Heat shock protein DnaJ	4.8	1.4
At5g59330	Nonspecific lipid-transfer protein	4.7	0.9
At2g26150	Putative heat shock transcription factor	4.0	1.7
At4g28350	Lectin receptor-like Ser/Thr kinase	3.7	0.8
At3g11020	DREB2B transcription factor	3.6	1.8
At1g32560	Late-embryogenesis abundant protein	3.4	1.7
At1g04220	Putative beta-ketoacyl-CoA synthase	3.3	0.5
At2g34355	Nodulin-like protein	3.1	0.6
At4g25000	Alpha-amylase	3.1	0.3
At5g15250	FtsH protease	2.9	0.9
At2g42270	Putative ATP-dependent RNA helicase	2.9	0.3

Table I. (Continued.)

Gene No.	Transcript Name	Avg.	SD
At1g17665	Dehydrogenase-like protein	2.6	1.2
At1g02300	Cathepsin B-like Cys protease	2.6	0.1
At3g03470	Putative cytochrome P450	2.6	0.2
At5g66110	atfp6-like protein	2.5	0.5
At4g02430	Similar to alternative splicing factor ASF	2.5	0.4
At1g14040	Polytropic retrovirus receptor	2.5	0.7
At5g49990	Permease	2.4	0.1
At5g43920	WD-repeat protein-like	2.4	0.6
At2g40350	AP2 domain transcription factor	2.3	0.5
At2g14120	Dynamin-like protein	2.3	0.7
At3g50980	Dehydrin-like protein dehydrin Xero2	2.3	0.4
At1g78670	Gamma glutamyl hydrolase	2.3	0.0
At1g47960	Similar to invertase inhibitor	2.3	0.1
At2g43570	Endochitinase isolog	2.3	0.1
At1g21460	Similar to nodule development protein	2.2	0.1
At4g01120	GBF2, G-box binding factor	2.2	0.1
At1g07720	Fatty acid elongase 3-ketoacyl-CoA synthase	2.2	0.0
At2g15880	Related to disease resistance Pro-rich	2.2	0.8
At1g15550	Gibberellin 3 beta-hydroxylase	2.2	0.2
At1g77510	Putative thioredoxin	2.2	0.1
At4g28450	SOF1-like protein (rRNA processing)	2.2	0.1
At4g33490	Nucellin-like protein	2.2	0.2
At3g62090	Putative phytochrome-associated protein 3	2.1	1.0
At3g12860	Putative nucleolar protein	2.1	1.2
At1g61580	Ribosomal protein	2.1	0.1
At1g04980	Disulfide isomerase-related protein	2.1	0.3
At5g58770	Dehydrolipichyl diphosphate	2.1	0.0
At1g10050	Putative xylan endohydrolase	2.1	0.7
At5g54080	Homogentisate 1,2-dioxygenase	2.1	0.2
At2g32920	Putative protein disulfide isomerase	2.1	0.1
At2g38530	Putative nonspecific lipid-transfer protein	2.1	0.2
At1g80110	Similar to PP2 lectin polypeptide	2.1	0.2
At4g24280	Heat shock 70 protein	2.1	0.1
At4g30960	Ser/Thr protein kinase	2.1	0.1
At3g54820	Aquaporin MIP-like protein	2.0	0.1
At2g07750	Putative RNA helicase	2.0	1.4
At3g10410	Putative Ser carboxypeptidase	2.0	0.2
At5g65110	Acyl-CoA oxidase	2.0	0.1
At3g23990	Mitochondrial chaperonin hsp60	2.0	0.1

(Table continues on following page.)

Table I. (Continued from previous page.)

Gene No.	Transcript Name	Avg.	SD
At5g24870	RING finger-like protein RING-H2	2.0	0.5
At3g62560	Small GTP-binding protein	2.0	0.1
At3g13784	Beta-fructofuranosidase	2.0	0.2
At3g44880	Lethal leaf-spot 1 homolog Lls1	2.0	0.1
At5g57900	SKP1 interacting partner 1	2.0	0.1
At5g04810	Salt-inducible protein	2.0	0.1

Changes in steady-state transcript abundance in plants subjected to a combination of drought and heat stress. Results are presented as fold-difference in steady-state transcript level (\log_2) over control unstressed plants. Only transcripts with a known (or putative) function and an expression level of fourfold or higher ($2 \log_2$) are shown. Accession numbers are given to each transcript on left. The known or putative function of each transcript is given on right. RNA preparation and analysis by Affymetrix chips are described in "Materials and Methods." Transcripts elevated during a combination of drought and heat stress, as well as drought or heat stress, are indicated in A; transcripts elevated during a combination of drought and heat stress, as well as heat stress, are indicated in B; transcripts elevated during a combination of drought and heat stress, as well as drought, are indicated in C; and transcripts specifically elevated during a combination of drought and heat stress are indicated in D. SD, Standard deviation.

during drought, and the steady-state level of 11 transcripts encoding HSPs was specifically elevated during a combination of drought and heat stress (Fig. 3A; Table I; supplemental material). Because the expression of HSPs is controlled by the activity of heat shock transcription factors (HSFs; Czarnecka-Verner and Gurley, 2000; Nover et al., 2001), we examined the expression pattern of all 21 Arabidopsis HSFs. As shown in Figure 3B, the expression pattern of HSFs during a combination of drought and heat stress was different from that during drought or heat stress. Differences were mainly focused on the degree of expression of HsfC1, the presence of HsfA6a (not found in cells during heat stress, but elevated during drought), and the presence of HsfA2 and HsfA3 (elevated during heat stress but not drought). Interestingly, the expression of a HSF previously reported to be elevated in cells during light stress (HsfA7a; Pnueli et al., 2003) was not elevated in cells during drought, heat stress, or their combination.

Another defense enzyme previously reported to be controlled by HSFs and elevated during heat stress, ascorbate peroxidase (Storozhenko et al., 1998; Panchuk et al., 2002; Pnueli et al., 2003), was also elevated during a combination of drought and heat stress. The function of this enzyme, i.e. removing reactive oxygen intermediates (ROI; Mittler, 2002), may be important for cell protection during a combination of drought and heat stress. The steady-state level of additional transcripts involved in ROI detoxification and ROI signaling was also elevated in cells during drought and a combination of drought and heat stress (Table IC). These included transcripts involved in glutathione metabolism, ferritin, and an NPK1-like

mitogen-activated protein (MAP) kinase (Kovtun et al., 2000; Pnueli et al., 2003). The group of transcripts elevated during drought and a combination of drought and heat stress also included transcripts encoding enzymes of the pentose phosphate pathway, dehydrins and late embryogenesis abundant (LEA)-like proteins, cold-induced proteins, and enzymes involved in anthocyanin biosynthesis.

Transcripts specific for a combination of drought and heat stress (cutoff $2 \log_2$) belonged to a number of different groups including HSPs, proteases, starch degrading enzymes, and lipid biosynthesis enzymes (Table I; supplemental material). The steady-state level of different transcripts encoding signal transduction proteins was also elevated during a combination of drought and heat stress. These included receptor-like kinases, small GTP-binding proteins, MYB transcription factors, and protein kinases. In addition, the expression of at least five different transcripts encoding membrane channels was elevated in plants subjected to a combination of drought and heat stress (CLC-b chloride channel, aquaporin membrane intrinsic protein (MIP), potassium transporter, $\text{Na}^+/\text{Ca}^{2+}$ -antiporter, and an ABC-type transporter). Defense transcripts specifically elevated in cells during a combination of drought and heat stress included thioredoxin and 2-peroxiredoxin, important for the prevention of oxidative stress, P450s, and a salt-inducible protein (Table I; supplemental material).

Transcripts elevated by all three treatments are also shown in Table IA (cutoff $2 \log_2$). They include several HSPs, trehalose-6-phosphate phosphatase, an abscisic acid (ABA)-induced protein phosphatase 2C, a two-component phosphorelay protein, and an ethylene-response transcription coactivator.

Metabolite Profiling of Arabidopsis Plants Subjected to a Combination of Drought and Heat Stress

To examine the accumulation of stress-associated metabolites in leaves of Arabidopsis plants subjected to drought, heat stress, or their combination, we performed a gas chromatography-mass spectrometric (GC-MS) analysis of polar compounds extracted from leaves of plants subjected to the different stresses. For this analysis we used the same batch of leaf tissues used for the physiological and molecular analysis of plants presented in Figures 1 to 3, and Table I. As shown in Figure 4, the GC profile of plants subjected to a combination of drought and heat stress was more similar to that of plants subjected to drought than to that of control plants or plants subjected to heat stress. Compound identification is shown in Table II. As shown in Table II, plants subjected to a combination of drought and heat stress accumulated high levels of sucrose and other sugars such as maltose, melibiose, gulose, and mannitol. In contrast, Pro that accumulated to a very high level in plants subjected to drought did not accumulate in plants subjected to a combination of drought and heat stress. The level of Gln was

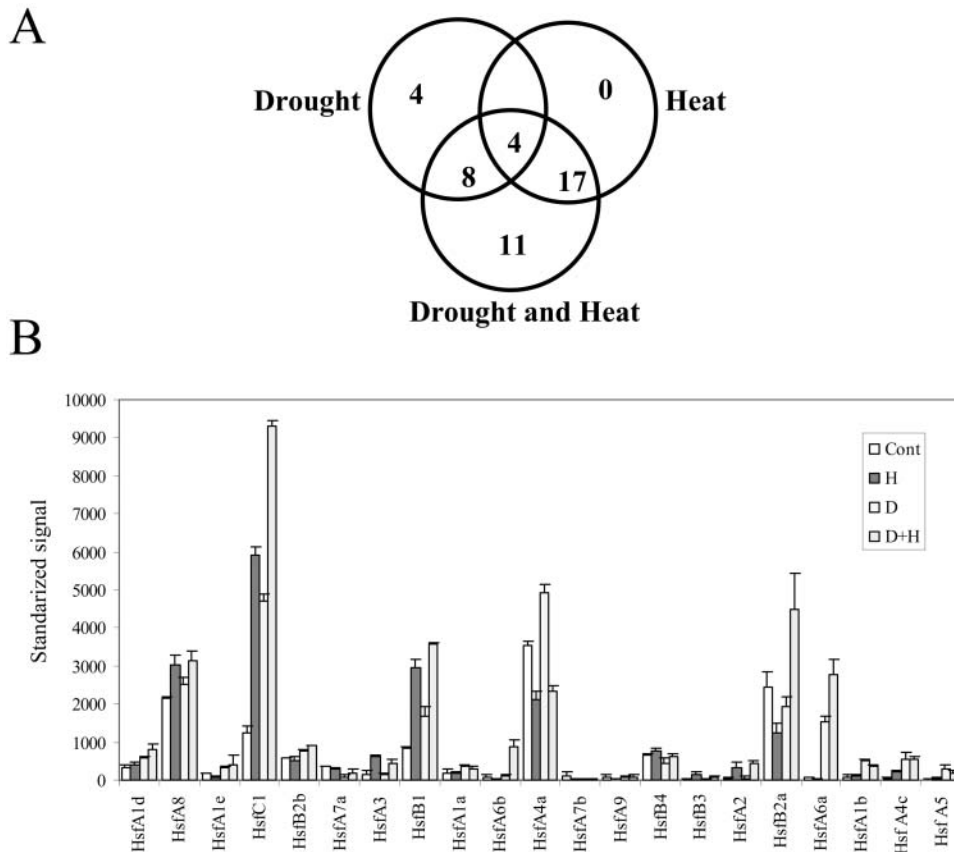


Figure 3. Steady-state transcript level of Arabidopsis transcripts encoding HSPs and HSFs in leaves of plants subjected to drought, heat stress, or a combination of drought and heat stress. Results are presented as average of three independent experiments. A, A Venn diagram showing the number of HSPs elevated during drought, heat stress, or a combination of drought and heat stress (cutoff 1.5-fold \log_2). B, Expression level of all Arabidopsis HSFs during drought, heat stress, and a combination of drought and heat stress. RNA isolation and Affymetrix chip analysis were performed as described in "Materials and Methods." Cont, Control; D, drought; H, heat stress; D+H, a combination of drought and heat stress.

specifically elevated in plants subjected to a combination of drought and heat stress (Table II), suggesting that Pro biosynthesis is inhibited and Glu is converted to Gln instead of Pro during the stress combination. Cys, a potential precursor of the antioxidant glutathione, was also elevated in leaves subjected to a combination of drought and heat stress. This accumulation corresponds with the enhancement of different transcripts involved in glutathione biosynthesis (Table I; supplemental material).

The source of sucrose in cells subjected to a combination of drought and heat stress is unknown. Because photosynthesis is suppressed in cells subjected to a combination of drought and heat stress (Fig. 1B), it is possible that sucrose is synthesized following starch degradation. Indeed, the expression of all three transcripts required for starch degradation (α -amylase, β -amylase, and α -glucosidase) is significantly elevated in plants subjected to a combination of drought and heat stress (Table I; supplemental material). In addition, the expression of hexokinase, that phosphorylates glucose, the expression of glucose-6-phosphate dehydrogenase, that can act as an entry point into

the pentose phosphate pathway, and the expression of sucrose-phosphate synthase, fructokinase, and sucrose-UDP glucosyltransferase, involved in sucrose biosynthesis, is elevated in plants subjected to a combination of drought and heat stress (Table I; supplemental material). Thus, based at least on the steady-state level of these transcripts, the synthesis of sucrose during a combination of drought and heat stress may occur from starch. Additional studies are, however, required to examine this possibility.

Amelioration of Pro Toxicity to Cells during Heat Stress

During different abiotic conditions such as cold, salt, and drought, Pro accumulates in cells and functions as an osmoprotectant (Apse and Blumwald, 2002; Zhu, 2002). Moreover, genetically engineering plants to overaccumulate Pro enhances their tolerance to some of these stresses (Kavi Kishor et al., 1995; Nanjo et al., 1999; Nuccio et al., 1999; Rontein et al., 2002). However, Pro can also be toxic to cells if it is not properly removed (Hellmann et al., 2000; Deuschle

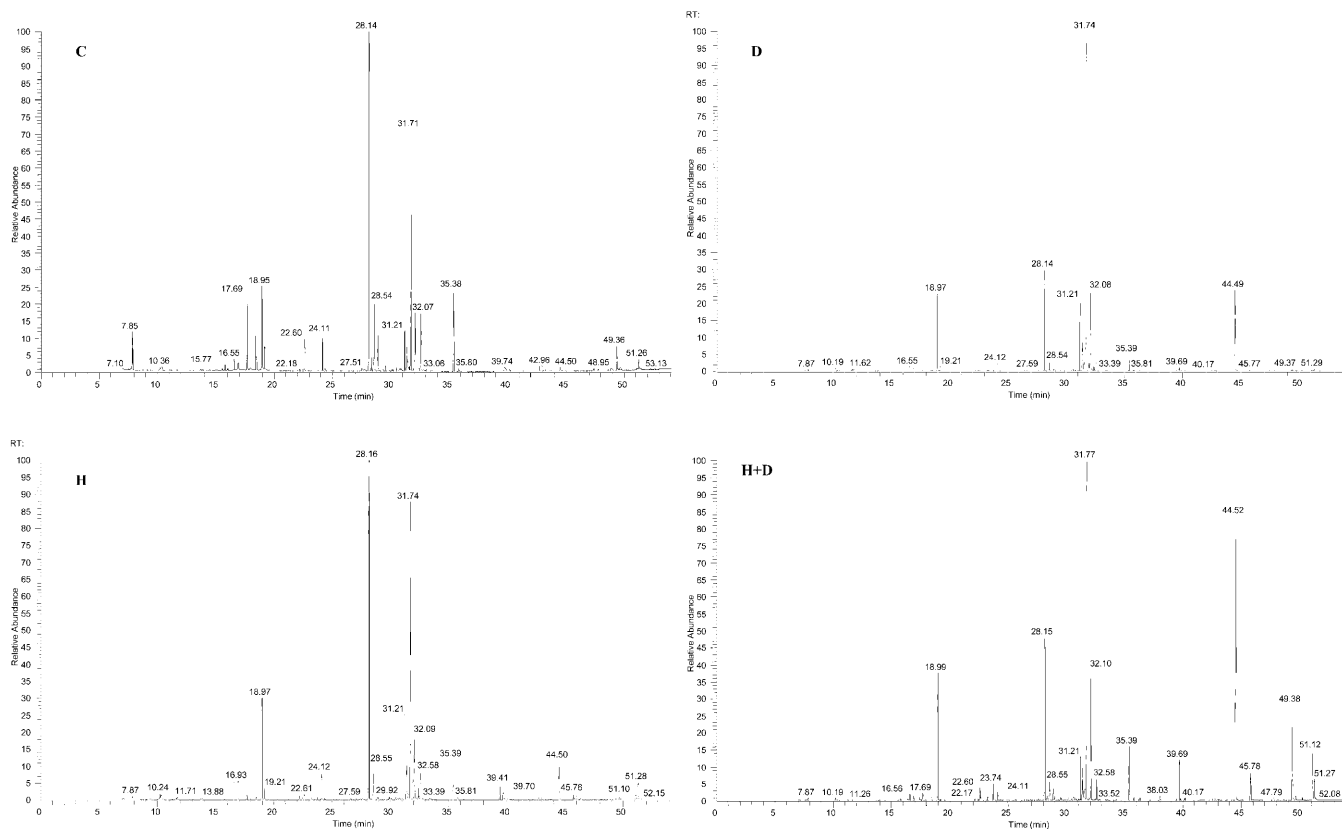


Figure 4. GC profiles of polar extracts obtained from control plants and plants subjected to heat stress, drought, or a combination of drought and heat stress. C, Control; D, drought; H, heat stress; D+H, a combination of drought and heat stress. Polar compound extraction and GC separation are described in "Materials and Methods."

et al., 2001; Mani et al., 2002; Nanjo et al., 2003). The absence of Pro from cells subjected to a combination of drought and heat stress (Table II) suggested that under these conditions Pro might be toxic to cells. To test whether Pro is toxic to plant cells during heat stress we grew Arabidopsis seedlings on Murashige and Skoog plates that contained different concentrations of Pro and subjected seedlings to a heat stress treatment. Conflicting reports can be found regarding the growth of Arabidopsis seedlings on plates containing Pro. Hellmann et al. (2000) and Mani et al. (2002) reported that Pro is toxic to wild-type seedlings grown on plates. In contrast, Nanjo et al. (2003) reported that the growth of wild-type seedlings is not inhibited by concentrations of up to 25 mM Pro. As shown in Figure 5, we found that the growth of Arabidopsis seedlings is inhibited in the presence of Pro. Moreover, we found that a heat stress treatment (similar to the treatment used in our analysis of plants subjected to heat stress or a combination of drought and heat stress; Figs. 1–4) ameliorated the toxic effect of Pro.

DISCUSSION

We describe what appears to be a new type of defense response in plants, induced by a combination

of drought and heat stress. This response is characterized by enhanced respiration, suppressed photosynthesis, a complex expression pattern of defense and metabolic transcripts, and the accumulation of sucrose and other sugars (Figs. 1 and 2; Tables I and II). Based on our physiological and molecular characterization there were many similarities between the response of Arabidopsis (Fig. 1 and Table I) and tobacco (Rizhsky et al., 2002) to this stress combination, suggesting that this mode of defense response is conserved among different plants.

There was a considerable degree of overlap between transcripts expressed in plants during drought or heat stress and a combination of drought and heat stress (Fig. 2). This overlap suggests that large segments of the defense program of plants against drought or heat stress are coactivated in the same cells during a combination of drought and heat stress. This possibility should be examined in future studies by a comprehensive proteomic approach since it raises a number of interesting questions regarding the co-function of defense proteins such as molecular chaperones and LEA-like proteins in the same cells (see below).

The steady-state level of many different transcripts was specifically elevated during a combination of drought and heat stress (Table I; supplemental

Table II. Metabolites detected by GC-MS in polar extracts of *Arabidopsis* leaves subjected to heat stress, drought, or a combination of drought and heat stress

Derivative	C		H			D			H+D		
	Resp ratio ^a	SE ^b	%C	Resp ratio	SE	%C	Resp ratio	SE	%C	Resp ratio	SE
Citric acid	0.01	0.00	1.10	0.01	0.00	3.62	0.02	0.01	0.69	0.00	0.00
Fumaric acid	2.71	0.68	0.67	1.82	0.18	0.75	2.04	1.23	1.69	4.58	0.12
Furanone	0.01	0.00	0.82	0.01	0.00	1.37	0.02	0.00	0.97	0.01	0.00
Glucosheptonic acid meox1 tms	0.02	0.01	1.46	0.03	0.01	1.12	0.03	0.00	0.80	0.02	0.01
Glucosheptonic acid meox2 tms	0.01	0.00	1.31	0.01	0.00	1.54	0.02	0.00	1.30	0.01	0.01
Hydroxybutanoic acid	0.04	0.03	1.08	0.04	0.03	0.33	0.01	0.00	0.93	0.04	0.01
Hydroxysuccinic acid	0.22	0.05	2.40	0.53	0.30	0.73	0.16	0.01	7.46	1.64	0.09
Isocitric acid	0.04	0.03	1.08	0.04	0.03	0.33	0.01	0.00	0.93	0.04	0.01
Lactic acid	0.00	0.00	2.12	0.01	0.01	1.19	0.01	0.00	0.76	0.00	0.00
Malic acid	0.01	0.00	0.82	0.00	0.00	ND	ND	ND	0.71	0.00	0.00
Succinic acid	0.06	0.02	0.69	0.04	0.01	0.22	0.01	0.01	0.56	0.04	0.00
4-Aminobutyric acid	0.00	0.00	0.84	0.00	0.00	ND	ND	ND	0.62	0.00	0.00
Allothreonine	0.02	0.01	0.61	0.01	0.00	0.25	0.00	0.00	0.63	0.01	0.00
Arg	0.02	0.01	0.19	0.00	0.00	ND	ND	ND	0.29	0.00	0.00
β -Ala	0.02	0.01	1.70	0.03	0.01	3.35	0.07	0.03	0.57	0.01	0.00
Cys	0.00	0.00	1.15	0.00	0.00	0.64	0.00	0.00	3.30	0.01	0.00
Glu	0.14	1.37	0.33	0.05	0.03	0.13	0.02	0.00	0.63	0.09	0.02
Gln	0.01	0.01	1.75	0.03	0.01	1.09	0.02	0.02	4.92	0.07	0.02
Gly	0.02	0.01	0.88	0.02	0.01	0.16	0.00	0.00	1.01	0.02	0.01
His	0.00	0.00	0.91	0.00	0.00	0.65	0.00	0.00	0.62	0.00	0.00
Isoleucine	0.02	0.01	0.19	0.00	0.00	ND	ND	ND	0.29	0.00	0.00
Leu	0.01	0.00	0.44	0.01	0.00	1.37	0.02	0.00	0.97	0.01	0.00
Lys	0.02	0.01	1.46	0.03	0.01	1.12	0.03	0.00	0.80	0.02	0.01
Orn	0.00	0.00	0.69	0.00	0.00	1.00	0.00	0.00	1.25	0.00	0.00
Pro	0.00	0.00	1.28	0.01	0.00	31.48	0.13	0.08	0.20	0.00	0.00
Thr	0.05	0.04	0.63	0.03	0.02	0.22	0.01	0.00	1.61	0.08	0.02
Tyr	0.00	0.00	0.86	0.00	0.00	2.70	0.01	0.00	0.74	0.00	0.00
Val	0.02	0.01	1.70	0.03	0.01	3.35	0.07	0.03	0.57	0.01	0.00
1,3-Diaminopropane	0.01	0.00	1.10	0.01	0.00	3.62	0.02	0.01	0.69	0.00	0.00
Ethanolamine	0.04	0.01	0.58	0.02	0.01	3.14	0.12	0.02	2.96	0.11	0.02
Putrescine	0.35	0.07	0.72	0.26	0.09	3.15	1.11	0.08	1.55	0.55	0.09
Fructose-6-phosphate	0.18	0.01	0.82	0.15	0.03	2.87	0.52	0.05	2.52	0.46	0.09
Glycerol	0.12	0.03	1.35	0.16	0.05	0.72	0.08	0.00	0.31	0.04	0.02
Inositol	0.30	0.13	1.06	0.31	0.07	1.52	0.45	0.06	2.57	0.76	0.14
Lactitol	0.10	0.05	3.49	0.34	0.07	0.48	0.05	0.00	0.56	0.05	0.02
Maltitol	0.06	0.02	0.85	0.05	0.02	0.57	0.03	0.01	1.09	0.06	0.01
Mannitol	0.07	0.04	0.56	0.04	0.03	0.39	0.03	0.00	1.71	0.12	0.01
Xylitol	0.01	0.00	1.02	0.01	0.00	3.59	0.04	0.01	2.33	0.03	0.01
Fructose meox1 tms	0.35	0.07	1.01	0.36	0.05	3.15	1.11	0.08	1.55	0.55	0.09
Fructose meox2 tms	0.18	0.01	0.90	0.16	0.01	2.87	0.52	0.05	2.52	0.46	0.09
Fucose	0.22	0.05	2.40	0.53	0.30	0.73	0.16	0.01	7.46	1.64	0.09
Galactose	0.41	0.04	1.11	0.45	0.02	4.72	1.93	0.03	4.31	1.77	0.30
Glucose	0.29	0.03	1.52	0.44	0.13	4.56	1.32	0.06	3.92	1.13	0.20
Gulose	0.05	0.03	1.56	0.08	0.03	0.28	0.01	0.01	4.85	0.24	0.04
Isomaltose meox1 tms	0.06	0.02	0.85	0.05	0.02	0.57	0.03	0.01	1.09	0.06	0.01
Isomaltose meox2 tms	0.01	0.00	0.21	0.00	0.00	1.20	0.02	0.00	3.56	0.05	0.01
Maltose	0.01	0.01	1.68	0.02	0.01	0.82	0.01	0.00	5.37	0.08	0.02
Mannose	1.97	0.13	1.13	2.23	0.10	4.37	8.62	0.51	3.90	7.68	0.89
Melibiose	0.17	0.07	2.38	0.40	0.16	0.46	0.08	0.03	4.66	0.78	0.17
Sucrose meox1 tms	0.43	0.39	1.50	0.65	0.07	5.48	2.37	1.04	23.65	10.22	0.81
Sucrose meox2 tms	0.01	0.01	0.54	0.00	0.00	0.60	0.00	0.00	16.25	0.11	0.03
Trehalose	0.29	0.03	1.52	0.44	0.13	4.56	1.32	0.06	3.92	1.13	0.20

GC-MS analysis of polar extracts from plants subjected to heat stress, drought, or a combination of heat stress and drought. Polar extracts were derivatized and analyzed as described in "Materials and Methods." All samples were methoximated and trimethylsilylated. Compounds with a twofold increase or more are indicated in bold. ^aResponse ratios are peak areas compared to the internal standard ribitol/adonitol. Peak areas were integrated with Genesis algorithm in Xcalibur. ^b $n = 3$. SE, Standard error; ND, not detected. Values of 0.00 are <0.01.

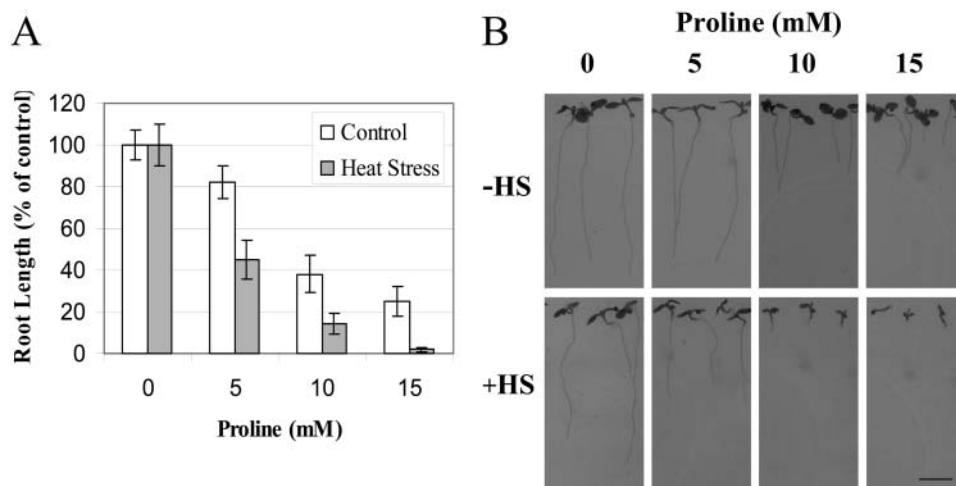


Figure 5. Amelioration of Pro toxicity during heat stress. A, Measurements of root length taken 48 h post a heat stress treatment of seedlings in the presence or absence of Pro. B, Photographs of Arabidopsis seedlings taken 96 h post a heat stress treatment of seedlings in the presence or absence of Pro; the bar in the lower right represents 4 mm. All measurements were performed as described in "Materials and Methods."

material). This group of transcripts included transcripts with an unknown function (over 40%; supplemental material) and a large number of transcripts involved in different defense pathways. Based on changes in steady-state transcript abundance and metabolite levels we could identify the pathways for starch degradation and sucrose biosynthesis as specifically elevated in plants during a combination of drought and heat stress, with some portions of these pathways also expressed during drought (Table I; supplemental material). However, the expression of many other transcripts belonging to different metabolic and defense pathways is also specifically elevated in cells during the stress combination (Table I). It should, however, be noted that our analysis is based upon a single time point (at the end of the heat stress treatment; Fig. 1A), and that a detailed time-course analysis should reveal additional transcripts expressed in cells during drought, heat stress, or their combination.

A considerable overlap was found between transcripts involved in the defense of plants against abiotic conditions such as cold, drought, and salinity (Kreps et al., 2002; Oztur et al., 2002; Seki et al., 2002). In contrast, our findings suggest a relatively small overlap between transcripts induced during drought or heat stress (Fig. 2). Nonetheless, during a combination of drought and heat stress, drought- and heat-stress-specific transcripts are expressed in the same tissues (Table I; supplemental material). Although we can only assume that many of these transcripts are translated, it is interesting that some of these transcripts can be found in the same cells because their function might in some cases be conflicting. For example, some LEA-like proteins and dehydrins can have a helix/random coil structure (Soulages et al., 2002). This structure may interfere with the proper

function of some HSPs and molecular chaperones because it may compete with unfolded proteins and enzymes that are the natural substrate of HSPs during stress.

In response to a decrease in leaf water content plants accumulate a variety of compounds that function as osmoprotectants (Bohnert, 2000; Hoekstra et al., 2001). It was suggested that a moderate level of water stress is accompanied by the accumulation of compounds such as Pro and Gly-betaine, whereas a severe level of water stress is accompanied by the accumulation of sugars such as sucrose (Hoekstra et al., 2001). Although the relative water content of plants subjected to drought and plants subjected to a combination of drought and heat stress was not significantly different (Fig. 1B), plants subjected to drought accumulated Pro whereas plants subjected to a combination of drought and heat stress accumulated sucrose (Table II). This difference may suggest that a combination of drought and heat stress imposes on plants a different type of internal stress (compared to drought or heat stress), that requires sucrose rather than Pro as an osmoprotectant. Alternatively, Pro may be toxic to cells during a combination of drought and heat stress. Thus, sucrose may be required to replace Pro as the major osmoprotectant of cells during the stress combination.

At least three different studies suggested that Δ^1 -pyrroline-5-carboxylate (P5C), and perhaps other intermediates in Pro biosynthesis and degradation can be toxic to cells (Hellmann et al., 2000; Deuschle et al., 2001; Mani et al., 2002). It is possible that heat stress alters the balance between Pro biosynthesis and degradation and causes the accumulation of P5C and/or other intermediates. Moreover, an enhanced activity of mitochondria (i.e. enhanced respiration) was found in cells during heat stress and a combination of drought and heat stress (Fig. 1B; Rizhsky et al.,

2002). Because Pro biosynthesis and degradation occurs in the mitochondria, the accumulation of toxic compounds such as P5C in this organelle might be more damaging to cells under these conditions (especially in plants subjected to a combination of drought and heat stress that appear to completely depend upon the mitochondria for their energetic metabolism; Fig. 1B; Rizhsky et al., 2002). Our results (Table II; Fig. 5), as well as the results of others (e.g. Deuschle et al., 2001), suggest that plants that were engineered to overaccumulate Pro in order to enhance their tolerance to abiotic stress (Kavi Kishor et al., 1995; Nanjo et al., 1999; Nuccio et al., 1999; Rontein et al., 2002) might not be resistant to field conditions that occur in some areas and include a combination of drought and heat stress, or simply heat stress.

The response of plants to a combination of drought and heat stress highlights the plasticity of the plant genome and its ability to modulate its response to complex environmental conditions that occur in the field. Key to this plasticity is a large network of transcription factors that regulate the response of plants to different stresses (Arabidopsis Genome Initiative, 2000; Chen et al., 2002). Here we show that the complex response of HSPs during heat stress, drought, and their combination (Fig. 3A; Table I; Rizhsky et al., 2002) is reflected in the pattern of expression of HSFs (Fig. 3B). Compared to humans and animals that express, at the most, four different transcripts encoding HSFs, Arabidopsis contains 21 different HSF-encoding genes that belong to at least three different families (Nover et al., 2001). Our results (Fig. 3; Pnueli et al., 2003) suggest that plant HSFs function as a network of transcription factors that controls the expression of HSPs during different stresses. Thus, we identified oxidative- and light-stress-specific HSFs (Pnueli et al., 2003) as well as heat-stress- and drought-specific HSFs (Fig. 3). Future analysis of this gene family, including measurements of HSF activity in cells, might provide an initial insight into how plants compensated during evolution for their sessile nature by developing complex and specialized gene families to control their response to environmental conditions. These were most likely created by gene duplication, however, acquired specific roles related to specific pathways or stresses, as well as their combination (Arabidopsis Genome Initiative, 2000). Similar results were also obtained with several members of the MYB transcription factor gene family (Fig. 1; supplemental material), and MYB-At1g26580 was identified as specifically elevated during a combination of drought and heat stress (Table I).

MATERIALS AND METHODS

Plant Material and Growth Conditions

Arabidopsis plants (cv Columbia) were grown under controlled conditions: 21°C to 22°C, 100 $\mu\text{mol m}^{-2} \text{s}^{-1}$, and a relative humidity of 70%. All treatments were performed in parallel. Heat stress was applied by raising the

temperature in the growth chamber to 38°C for 6 h. Drought was imposed by withdrawing water from plants until they reached a relative water content (RWC) of 70% to 75% (typically 6–7 d). A combination of drought and heat stress was performed by subjecting drought-stressed plants (RWC of 70%–75%) to a heat stress treatment (38°C for 6 h). All plants, i.e. drought-stressed plants, well-watered plants subjected to heat stress, drought- and heat-stressed plants, and control well-watered plants kept at 21°C to 22°C were sampled at the same time for analysis (Rizhsky et al., 2002; Fig. 1A). All experiments were performed in triplicates and repeated at least three times. All tissues collected were divided and used in parallel for molecular and metabolic analysis of plants.

Molecular and Physiological Analysis

RNA and protein were isolated and analyzed by RNA and protein blots as previously described (Pnueli et al., 2003; Rizhsky et al., 2003). A ribosomal 18S rRNA probe was used to control for RNA loading. Photosynthesis, stomatal conductance, and dark respiration were measured with a Li-Cor LI-6400 apparatus as described by Pnueli et al. (2003) using the Arabidopsis leaf chamber (Li-Cor).

DNA Chip Analysis

In three independent experiments RNA was isolated from control plants and plants subjected to heat stress, drought, and a combination of heat and drought stress (a pool of 80 to 100 plants per treatment in triplicates), as described above. This RNA was used to perform the chip analysis (Arabidopsis ATH1 chips; Affymetrix) at the University of Iowa DNA facility (<http://dna-9.int-med.uiowa.edu/microarrays.htm>). Conditions for RNA isolation, labeling, hybridization, and data analysis are described in Pnueli et al. (2003) and Rizhsky et al. (2003). Comparative analysis of samples was performed with the GeneChip mining tool version 5.0 and the Silicon Genetics GeneSpring version 5.1. Some of the comparison results were confirmed by RNA blots.

GC-MS Analysis

Extraction and derivatization were performed according to Roessner et al. (2000) and Fiehn et al. (2000). Leaves were harvested, cut into 1- to 2-mm-long pieces, and stored at -80°C . For each sample, a total of 250 mg of frozen leaves was transferred into a 13 \times 100 borosilicate culture tube, immediately frozen in liquid nitrogen, and ground to a fine powder with a glass rod. Aliquots of 1.4 mL methanol and 50 μL of ribitol/adonitol (2 mg/mL water stock) were added. Tubes were vortexed, and pH was verified within 5 to 6. The solution was sonicated for 10 min at 42 kHz with a Branson 3510 ultrasonic cleaner (Branson Ultrasonic, Danbury, CT). Extraction was done in a water bath at 70°C for 15 min. Tubes were centrifuged for 20 min at 4,500 rpm and the supernatant was decanted to new culture tubes, and 1.4 mL of water and 0.75 mL of chloroform were added. The mixture was vortexed thoroughly and centrifuged for 5 min at 4,500 rpm. The polar phase (methanol/water) was decanted to 1.5-mL HPLC vials and dried in a Centrivap benchtop centrifugal concentrator (Labconco, Kansas City, MO) overnight. The dried polar phase was methoximated for 90 min at 30°C (80 μL of 20 mg/mL methoxyamine hydrochloride in pyridine), a 40- μL aliquot of a retention time standard mixture was added (Roessner et al., 2000), and the mixture was trimethylsilylated for 30 min at 37°C. Solutions were transferred to glass inserts within the 1.5-mL HPLC vials prior to injection.

Sample volumes of 1 μL were injected at a split ratio of 25:1 into a Trace DSQ GC/MS system (Thermo Finnigan, Austin, TX) equipped with Combi-Pal autosampler (Leap Technologies, Carrboro, NC). Tuning was done using tris(perfluorobutyl)amine (CF43) as a reference gas. Chromatography was performed using a 30-m \times 250- μm Alltech AT-5MS column (Alltech Associates, Deerfield, IL). Injection temperature was 230°C, the interface was kept at 250°C, and the ion source was kept at 200°C. Oven temperature program was 5 min at 70°C, followed by a 5°C min^{-1} ramp to 310°C, 1 min at 310°C, and a final 6 min at 70°C before the next injection. Carrier gas was helium at a constant flow of 1 mL min^{-1} . Mass spectra were recorded at two scans per second over a range of 50 to 600 m/z. Compounds were identified based on retention time and comparison with reference spectra in mass spectral libraries. Quantitation of compounds was done using a processing method in Xcalibur version 1.3 (Xcalibur, Herndon, VA) where peak area was

integrated with the Genesis algorithm. Statistical analysis of peak area was done using the SAS system version 8.2 (SAS Institute, Cary, NC).

Analysis of Pro Toxicity during Heat Stress

Arabidopsis seedlings (15–20 per plate) were germinated under sterile conditions on Murashige and Skoog plates (0.5×), containing different concentrations of Pro (0–15 mM). Plates were placed vertically, and seedlings were allowed to grow at 21°C to 22°C, 60 $\mu\text{mol m}^{-2} \text{s}^{-1}$. Three-day-old seedlings were subjected to a heat stress treatment as described above and allowed to recover at 21°C to 22°C. Forty-eight hours following the heat stress treatment the root length of seedlings (Rizhsky et al., 2003) was measured and compared between heat-stress-treated and heat-stress-untreated seedlings grown in the presence or absence of Pro. In each experiment six different plates were used for each concentration (three heat stressed and three non-heat stressed).

ACKNOWLEDGMENTS

We thank Drs. Eve Syrkin-Wurtele, Carol Foster, and Hailong Zhang for their help with Affymetrix data analysis.

Received September 16, 2003; returned for revision December 20, 2003; accepted January 2, 2004.

LITERATURE CITED

- Apse MP, Blumwald E (2002) Engineering salt tolerance in plants. *Curr Opin Biotechnol* **13**: 146–150
- Arabidopsis Genome Initiative (2000) Analysis of the genome sequence of the flowering plant *Arabidopsis thaliana*. *Nature* **408**: 796–815
- Bohnert HJ (2000) What makes desiccation tolerable? *Genome Biol* **1**: 1010.1–1010.4
- Chen W, Provart NJ, Glazebrook J, Katagiri F, Chang HS, Eulgem T, Mauch F, Luan S, Zou G, Whitham SA, et al. (2002) Expression profile matrix of Arabidopsis transcription factor genes suggests their putative functions in response to environmental stresses. *Plant Cell* **14**: 559–574
- Craufurd PQ, Peacock JM (1993) Effect of heat and drought stress on sorghum. *Exp Agr* **29**: 77–86
- Czarnecka-Verner E, Gurley WB (2000) Plant heat shock transcription factors: divergence in structure and function. *Biotechnologia* **3**: 125–142
- Cushman JC, Bohnert HJ (2000) Genomic approaches to plant stress tolerance. *Curr Opin Plant Biol* **3**: 117–124
- Deuschle K, Funck D, Hellmann H, Daschner K, Binder S, Frommer WB (2001) A nuclear gene encoding mitochondrial Delta-pyrroline-5-carboxylate dehydrogenase and its potential role in protection from proline toxicity. *Plant J* **27**: 345–356
- Fiehn O, Kopka J, Trethewey RN, Willmitzer L (2000) Identification of uncommon plant metabolites based on calculation of elemental compositions using gas chromatography and quadrupole mass spectrometry. *Anal Chem* **23**: 3573–3580
- Hellmann H, Funck D, Rentsch D, Frommer WB (2000) Hypersensitivity of an Arabidopsis sugar signaling mutant toward exogenous proline application. *Plant Physiol* **123**: 779–789
- Heyne EG, Brunson AM (1940) Genetic studies of heat and drought tolerance in maize. *J Am Soc Agron* **32**: 803–814
- Hoekstra FA, Golovina EA, Buitink J (2001) Mechanisms of plant desiccation tolerance. *Trends Plant Sci* **6**: 431–438
- Ingram J, Bartels D (1996) The molecular basis of dehydration tolerance in plants. *Annu Rev Plant Physiol Plant Mol Biol* **47**: 377–403
- Jagtap V, Bhargava S, Streb P, Feierabend J (1998) Comparative effect of water, heat and light stresses on photosynthetic reactions in Sorghum bicolor (L.) Moench. *J Exp Bot* **49**: 1715–1721
- Jiang Y, Huang B (2001) Drought and heat stress injury to two cool season turfgrasses in relation to antioxidant metabolism and lipid peroxidation. *Crop Sci* **41**: 436–442
- Kavi Kishor PB, Hong Z, Miao GH, Hu CAA, Verma DPS (1995) Overexpression of [delta]-pyrroline-5-carboxylate synthetase increases proline production and confers osmotolerance in transgenic plants. *Plant Physiol* **108**: 1455–1460
- Kovtun Y, Chiu WL, Tena G, Sheen J (2000) Functional analysis of oxidative stress-activated mitogen-activated protein kinase cascade in plants. *Proc Natl Acad Sci USA* **97**: 2940–2945
- Kreps JA, Wu Y, Chang H-S, Zhu T, Wang X, Harper JF (2002) Transcriptome changes for Arabidopsis in response to salt, osmotic, and cold stress. *Plant Physiol* **130**: 2129–2141
- Mani S, Van De Cotte B, Van Montagu M, Verbruggen N (2002) Altered levels of proline dehydrogenase cause hypersensitivity to proline and its analogs in Arabidopsis. *Plant Physiol* **128**: 73–83
- Miernyk JA (1999) Protein folding in the plant cell. *Plant Physiol* **121**: 695–703
- Mittler R (2002) Oxidative stress, antioxidants, and stress tolerance. *Trends Plant Sci* **7**: 405–410
- Mittler R, Merquiol E, Hallak-Herr E, Rachmilevitch S, Kaplan A, Cohen M (2001) Living under a 'dormant' canopy: a molecular acclimation mechanism of the desert plant *Retama raetam*. *Plant J* **25**: 407–416
- Moffat AS (2002) Plant genetics. Finding new ways to protect drought-stricken plants. *Science* **296**: 1226–1229
- Nanjo T, Fujita M, Seki M, Kato T, Tabata S, Shinozaki K (2003) Toxicity of free proline revealed in an Arabidopsis T-DNA-tagged mutant deficient in proline dehydrogenase. *Plant Cell Physiol* **44**: 541–548
- Nanjo T, Kobayashi M, Yoshida Y, Kakubari Y, Yamaguchi-Shinozaki K, Shinozaki K (1999) Antisense suppression of proline degradation improves tolerance to freezing and salinity in Arabidopsis thaliana. *FEBS Lett* **461**: 205–210
- Nover L, Bharti K, Doring P, Mishra SK, Ganguli A, Scharf KD (2001) Arabidopsis and the heat stress transcription factor world: how many heat stress transcription factors do we need? *Cell Stress Chaperones* **6**: 177–189
- Nuccio ML, Rhodes D, McNeil SD, Hanson AD (1999) Metabolic engineering of plants for osmotic stress resistance. *Curr Opin Plant Biol* **2**: 128–134
- Ozturk ZN, Talame V, Deyholos M, Michalowski CB, Galbraith DW, Gozukirmizi N, Tuberosa R, Bohnert HJ (2002) Monitoring large-scale changes in transcript abundance in drought- and salt-stressed barley. *Plant Mol Biol* **48**: 551–573
- Panchuk II, Volkov RA, Schoff F (2002) Heat stress- and heat shock transcription factor-dependent expression and activity of ascorbate peroxidase in Arabidopsis. *Plant Physiol* **129**: 838–853
- Perdomo P, Murphy JA, Berkowitz GA (1996) Physiological changes associated with performance of Kentucky bluegrass cultivars during summer stress. *HortScience* **31**: 1182–1186
- Pnueli L, Hongjian L, Mittler R (2003) Growth suppression, altered stomatal responses, and augmented induction of heat shock proteins in cytosolic ascorbate peroxidase (Apx1)-deficient Arabidopsis plants. *Plant J* **34**: 187–203
- Queitsch C, Hong SW, Vierling E, Lindquist S (2000) Heat shock protein 101 plays a crucial role in thermotolerance in Arabidopsis. *Plant Cell* **12**: 479–492
- Rizhsky L, Hongjian L, Mittler R (2002) The combined effect of drought stress and heat shock on gene expression in tobacco. *Plant Physiol* **130**: 1143–1151
- Rizhsky L, Liang H, Mittler R (2003) The water-water cycle is essential for chloroplast protection in the absence of stress. *J Biol Chem* **278**: 38921–38925
- Roessner U, Wagner C, Kopka J, Trethewey RN, Willmitzer L (2000) Simultaneous analysis of metabolites in potato tuber by gas chromatography-mass spectrometry. *Plant J* **23**: 131–142
- Rontein D, Basset G, Hanson AD (2002) Metabolic engineering of osmoprotectant accumulation in plants. *Metab Eng* **4**: 49–56
- Savage DA, Jacobson LA (1935) The killing effect of heat and drought on buffalo grass and blue grama grass at Hays. *Kansas J Amer Soc Agro* **27**: 566–582
- Savin R, Nicolas ME (1996) Effects of short periods of drought and high temperature on grain growth and starch accumulation of two malting barley cultivars. *Aust J Plant Physiol* **23**: 201–210
- Seki M, Narusaka M, Ishida J, Nanjo T, Fujita M, Oono Y, Kamiya A, Nakajima M, Enju A, Sakurai T, et al. (2002) Monitoring the expression profiles of 7000 Arabidopsis genes under drought, cold and high-salinity stresses using a full-length cDNA microarray. *Plant J* **31**: 279–292

- Shinozaki K, Yamaguchi-Shinozaki K** (1996) Molecular responses to drought and cold stress. *Curr Opin Biotechnol* **7**: 161–167
- Soulages JL, Kim K, Walters C, Cushman JC** (2002) Temperature-induced extended helix/random coil transitions in a group 1 late embryogenesis-abundant protein from soybean. *Plant Physiol* **128**: 822–832
- Storozhenko S, De Pauw P, Van Montagu M, Inze D, Kushnir S** (1998) The heat-shock element is a functional component of the Arabidopsis APX1 gene promoter. *Plant Physiol* **118**: 1005–1014
- Vierling E** (1991) The roles of heat shock proteins in plants. *Annu Rev Plant Physiol Plant Mol Biol* **42**: 579–620
- Zhu J-K** (2002) Salt and drought stress signal transduction in plants. *Annu Rev Plant Physiol Plant Mol Biol* **53**: 247–273