

WJG 20th Anniversary Special Issues (15): Laparoscopic resection of gastrointestinal

Gastrointestinal metabolic surgery for the treatment of type 2 diabetes mellitus

Eng-Hong Pok, Wei-Jei Lee

Eng-Hong Pok, Division of Upper GI Surgery, Department of Surgery, University Malaya Medical Center, University of Malaya, Kuala Lumpur 50603, Malaysia

Wei-Jei Lee, Department of Surgery, Min-Sheng General Hospital, National Taiwan University, Taoyuan 33044, Taiwan

Author contributions: Pok EH and Lee WJ designed and wrote the paper; Pok EH performed the literature search and wrote the paper; Pok EH and Lee WJ contributed equally.

Correspondence to: Wei-Jei Lee, MD, PhD, Department of Surgery, Min-Sheng General Hospital, National Taiwan University, No. 168, Chin Kuo Road, Taoyuan 33044, Taiwan. wjlee_obessurg_tw@yahoo.com.tw

Telephone: +886-3-3179599 Fax: +886-3-3469291

Received: November 28, 2013 Revised: March 7, 2014

Accepted: May 29, 2014

Published online: October 21, 2014

Abstract

Medical therapy for type 2 diabetes mellitus is ineffective in the long term due to the progressive nature of the disease, which requires increasing medication doses and polypharmacy. Conversely, bariatric surgery has emerged as a cost-effective strategy for obese diabetic individuals; it has low complication rates and results in durable weight loss, glycemic control and improvements in the quality of life, obesity-related co-morbidity and overall survival. The finding that glucose homeostasis can be achieved with a weight loss-independent mechanism immediately after bariatric surgery, especially gastric bypass, has led to the paradigm of metabolic surgery. However, the primary focus of metabolic surgery is the alteration of the physio-anatomy of the gastrointestinal tract to achieve glycemic control, metabolic control and cardio-metabolic risk reduction. To date, metabolic surgery is still not well defined, as it is used most frequently for less obese patients with poorly controlled diabetes. The mechanism of glycemic control is still incompletely understood. Published

research findings on metabolic surgery are promising, but many aspects still need to be defined. This paper examines the proposed mechanism of diabetes remission, the efficacy of different types of metabolic procedures, the durability of glucose control, and the risks and complications associated with this procedure. We propose a tailored approach for the selection of the ideal metabolic procedure for different groups of patients, considering the indications and prognostic factors for diabetes remission.

© 2014 Baishideng Publishing Group Inc. All rights reserved.

Key words: Metabolic surgery; Gastrointestinal surgery; Type-2 diabetes mellitus; Glucolipototoxicity; Efficacy; Prognostic factor

Core tip: The success of bariatric surgery in obese diabetic individuals [body mass index, body mass index (BMI) > 35 kg/m²] has led to the paradigm of metabolic surgery for the treatment of type 2 diabetes mellitus, including patients with a BMI < 35 kg/m². The mechanisms of metabolic gastrointestinal surgery are thought to depend on the dramatic entero-hormonal changes after physio-anatomical re-arrangement of the gastrointestinal tract. However, data have shown that weight loss is still the cornerstone of diabetes remission. This review will discuss the current recommendations regarding the use of gastrointestinal surgery for glycemic and metabolic control in diabetic individuals with a BMI < 35 kg/m².

Pok EH, Lee WJ. Gastrointestinal metabolic surgery for the treatment of type 2 diabetes mellitus. *World J Gastroenterol* 2014; 20(39): 14315-14328 Available from: URL: <http://www.wjgnet.com/1007-9327/full/v20/i39/14315.htm> DOI: <http://dx.doi.org/10.3748/wjg.v20.i39.14315>

INTRODUCTION

Amidst the current worldwide epidemic of type 2 diabetes mellitus (T2DM), the global diabetes health burden is projected to reach 522 million in 2030^[1], with much of this increase occurring in developing countries. Asia's population is predicted to become a hotspot of the "metabolically obese" phenotype (normal body weight with increased abdominal adiposity) that is characterized by a relatively young age of onset with a low body mass index (BMI)^[2]. In China specifically, the estimated prevalence of diabetes in 2010 was 11.6%, and that of pre-diabetes was 50.1%, accounting for up to 113.9 million Chinese adults with diabetes and 493.4 million with pre-diabetes^[3]. Furthermore, given the increasing prevalence of obesity worldwide, the epidemic of diabetes has become an even larger economic and social public health challenge. The free fatty acids derived from visceral adipose tissue impair insulin sensitivity and β -cell function (lipotoxicity), leading to metabolic syndrome (MetS) and T2DM.

Long-term glycemic control of diabetes can halt the progression of the disease, prevent complications and reduce cardiovascular risk^[4]. There are still, however, major unmet needs that are not addressed by intensified multifactorial interventions due to the need for continual monitoring and increasing doses over time with disease progression^[5]. Most diabetic patients are unable to achieve adequate glucose control with medical therapy in the long term due to time-consuming medical interventions^[6,7]. In the United States, only 50% of diabetic patients are able to achieve glycated haemoglobin (HbA1c) < 7% with medical therapy as recommended by the American Diabetic Association^[7].

In contrast, bariatric surgery has been shown to induce the remission of diabetes or to reduce the need for medications with durable long-term results in morbidly obese patients^[8,9], thereby providing a potentially cost-effective approach to treating T2DM. Considering weight loss-independent mechanisms for diabetes improvement, metabolic gastrointestinal surgery is now being performed for mildly obese or even overweight patients (BMI < 35 kg/m²), with a focus on diabetes rather than obesity. The aims of metabolic surgery are glycemic control, metabolic control and cardio-metabolic risk reduction.

Therefore, this review will examine the current use of gastrointestinal surgery for the metabolic control of T2DM. Data on patients with a BMI < 35 kg/m² will be discussed in depth to reflect the current research focus.

LITERATURE SEARCH

An extensive literature search of English-language journals was performed using the following databases from 1987 to October 2013: MEDLINE/Pubmed, Embase and the Cochrane database.

The MeSH headings used included the following: "metabolic surgery", "type 2 diabetes mellitus", "gastro-

intestinal surgery", "non-obese", "BMI < 35 kg/m²", "obesity", "diabetes remission", "HbA1c", "glucolipotoxicity" and "prognostic factor". The terms were searched with combination of "OR" and "AND". All abstracts identified were read to ensure that they met the inclusion criteria of any form of metabolic surgery for T2DM. Additional articles found in the references of the selected articles were reviewed to determine if they met the inclusion criteria. Critically, articles were reviewed for data on changes in BMI, HbA1c, type of surgery, reported remission and complications.

TYPES OF METABOLIC SURGERY

Bariatric surgery denotes any surgical procedure that is aimed at the reduction of excess weight. The conventional bariatric operations are divided as follows: restrictive type [laparoscopic adjustable gastric banding (LAGB) or laparoscopic sleeve gastrectomy (LSG)], malabsorptive type [bilio-pancreatic division with duodenal switch (BPD/DS)] and combination type [roux-en-Y gastric bypass (RYGB) or mini gastric bypass]. Interestingly, both bypass and restrictive procedures were reported to cause diabetes remission, but through different mechanisms, depending on the degree of the physio-anatomical alteration of the gastro-intestinal tract^[9]. Essentially, the rapid induction of a negative energy balance after surgery, limited foregut bypass, rapid nutrient delivery to the hindgut and decreased adipocyte mass may all play important roles in durable weight loss, decreased satiety, improved insulin resistance and resolution of the pro-inflammatory state associated with obesity.

ROLE OF OBESITY IN METS AND T2DM

Obesity, particularly central obesity, is closely associated with insulin resistance and T2DM^[10]. Long-standing obesity will eventually lead to glucose intolerance due to stress failure of the beta cells in predisposed individuals^[11]. Biologically, as adipose tissue is an active endocrine and immune tissue, the pathogenic nature of adipose tissue depends on how the positive calorie balance results in "sick fat" in genetically and environmentally susceptible individuals rather than on the total amount of fat mass^[12,13]. This adipose dysfunction will result in pathogenic adipocyte deposits with lipotoxicity, resulting in cardiovascular disease and mortality^[14] (Figure 1). Visceral fat, the most metabolically active adipose tissue deposit, releases various pathogenic mediators into the portal system, leading to hepatic-mediated metabolic disease (dyslipidemia and T2DM)^[14]. High levels of circulating free fatty acids are also "lipotoxic" to various organs, especially the pancreas and liver, leading to metabolic disease. Therefore, effective weight loss after bariatric surgery that reduces metabolically active "sick fat" will improve metabolic disease and lead to the resolution of T2DM^[15].

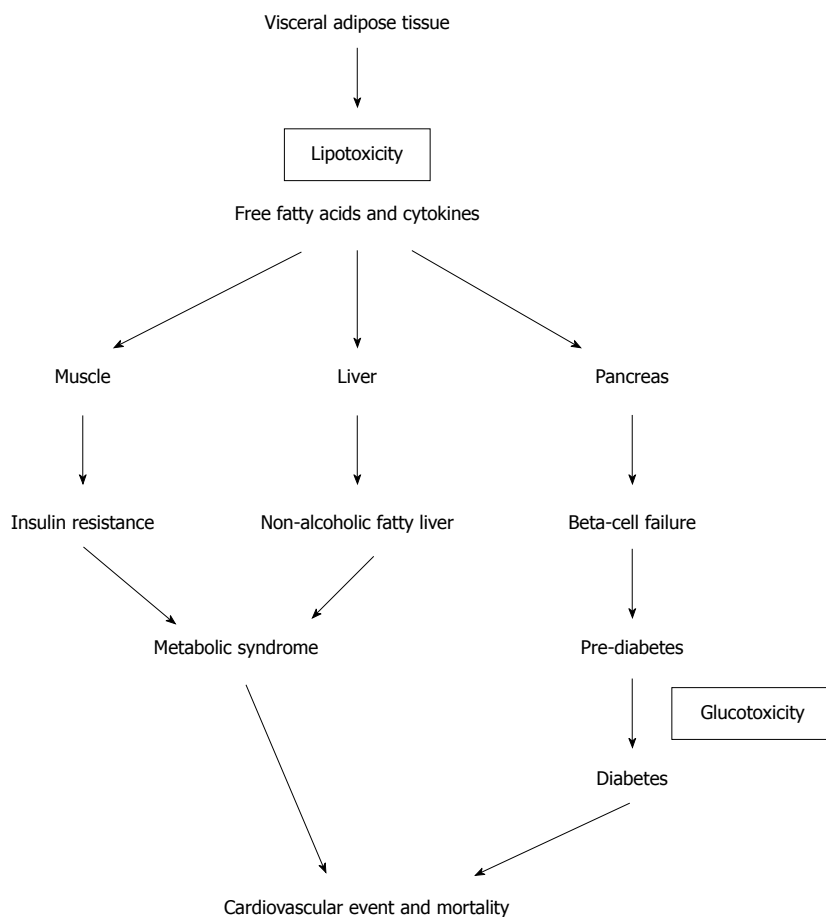


Figure 1 How lipotoxicity causes type 2 diabetes mellitus and metabolic syndrome.

MECHANISM OF GLYCEMIC CONTROL AFTER GASTROINTESTINAL SURGERY

Although various types of bariatric procedures have been used to treat T2DM, the physiology of remission is still incompletely understood^[16]. Diabetes remission results from improvements in both insulin resistance and β -cell dysfunction, but the degree of their improvement also depends on the type of surgery performed. To elucidate the molecular mechanism of diabetes control, it is critical to understand which part of the typical anatomical rearrangement of gastrointestinal surgery is essential for the glycemic control of T2DM.

The restrictive procedure (LAGB) is thought to achieve glycemic control purely through weight loss without an entero-hormonal effect. Therefore, the remission of diabetes is slow and occurs in parallel with gradual weight loss. In contrast, the most investigated metabolic procedure is RYGB, which exhibits significant hormonal changes after surgery; the glycemic control is acute and immediate via an anti-diabetic weight-independent mechanism, even without significant weight loss after surgery. Moreover, the magnitude of metabolic control is much greater than the expected degree of weight loss, which might be a clue that the altered hormonal milieu of gut-hormone release explains the metabolic disease control^[18]. Generally, im-

mediately after RYGB, acute calorie restriction, usually 200-300 kcal/d, leads to improved glucose tolerance due to improved hepatic insulin sensitivity and reduced hepatic glycogen stores^[17]. Later, the incretin effect due to hormonal changes is responsible for further improvements in insulin secretion and sensitivity^[18]. For those patients with obesity and lipotoxicity, significant subsequent weight loss will account for improved pancreatic function and decreased insulin resistance due to resolution of the pro-inflammation state^[13]. Based on this observation, several plausible mechanisms are possibly responsible for the early and long-term glycemic normalization after bariatric surgery. The most prominent glycemic effects are the decrease in insulin resistance and the increase in early phase insulin release^[18,19]. Nevertheless, the interaction of multiple organ-related pathways involving the brain, gut, liver, pancreas, muscle, adipose tissues and other undiscovered tissues may result in dramatic resolution of the diabetic state. The main suggested hypotheses of the possible related mechanisms are discussed below.

Calorie restriction and weight loss

Calorie restriction and subsequent weight loss can have potent effects on insulin sensitivity due to either surgical or medical interventions. Studies have shown that the effect of 48 h of acute calorie restriction (approximately

1100 kcal/d) could result in improved hepatic insulin sensitivity with reduced hepatic gluconeogenesis; however, there is no effect on muscle insulin sensitivity unless greater weight loss is achieved in obese subjects^[20]. Similarly, the static measure of the HOMA-IR score improves within days after bariatric surgery when weight loss is minimal^[21], but greater weight loss (> 20%) after RYGB or LAGB is required to improve skeletal muscle insulin sensitivity^[22-24]. RYGB and BPD produced a significant decrease in insulin resistance at 2 wk after surgery^[21]. However, the effect of BPD on muscle sensitivity is unique and possibly related to massive lipid malabsorption, as this surgery results in a rapid improvement in muscle insulin sensitivity despite minimal weight loss (< 10%)^[25,26] and minimal improvement thereafter despite greater weight loss^[27,28]. Interestingly, one study has shown that despite similar weight losses of 30% after RYGB and LAGB, the RYGB cohort had higher rates of diabetes remission (72% *vs* 17%) at 2 years^[29]. This result clearly suggests that in addition to weight loss, there is a weight-independent anti-diabetes mechanism in diabetes remission after RYGB.

Foregut effect

The “foregut hypothesis” proposes that the exclusion of the duodenum and proximal jejunum from the transit of nutrients may prevent the secretion of a putative signal that promotes insulin resistance and T2DM, suggesting that a yet unidentified inhibitory product from the proximal bowel causes metabolic changes (anti-incretin). This hypothesis was based on an animal study by Rubino *et al.*^[30], which supported the foregut hypothesis as a dominant mechanism in improving glucose homeostasis after RYGB. In their study, duodenal-jejunal bypass (DJB) (gastrojejunostomy + duodenal exclusion as in RYGB) greatly improved diabetes in Goto-Kakizaki rats, an animal model of non-obese T2DM. Conversely, a simple gastrojejunostomy without excluding nutrient flow through the proximal intestine did not improve diabetes. Interestingly, when the authors reestablished the normal gastroduodenal route but preserved the gastrojejunostomy, the glycemic abnormality returned in the DJB-treated rats. Thus, the authors proposed that excluding the proximal intestine from nutrient flow would improve glucose tolerance and suggested that a putative signal originating in the foregut might be involved in the pathophysiology of T2DM. Similarly, strong support for the foregut hypothesis came from the use of an endoluminal sleeve to endoscopically achieve DJB, which produced significant weight loss, resolution of T2DM and improvement in the cardiovascular risk factor profile^[31]; these findings might open new avenues for diabetes research. Interestingly, Zhang *et al.*^[32] investigated the role of Bilioth-II gastrojejunostomy, with exclusion of the proximal gut (almost similar to RYGB), in glucose metabolism and gut hormone modulations in non-obese Chinese gastric cancer patients. They found that blood glucose tolerance was improved in the non-

obese T2DM patients but worsened in the non-diabetic patients. All patients had comparable weight loss. These results suggested that the role of the proximal gut in the pathophysiology of T2DM and the glycemic effect is weight independent. Clinically, there is strong evidence from randomized trials by Lee *et al.*^[33] and Schauer *et al.*^[34] showing that gastric bypass is superior to sleeve gastrectomy without duodenal exclusion for diabetes remission in patients with poorly controlled diabetes.

Hindgut effect

The “hindgut hypothesis” proposes that diabetes control results from the expedited delivery of nutrients to the distal bowel, thus producing a physiologic signal that improves glucose homeostasis. The potential mediators of this effect are glucagon-like peptide-1 (GLP-1), GIP (incretin effect) and peptide YY (non-incretin). The rapid delivery of nutrients has been demonstrated to stimulate the “L” cells in the distal intestine to secrete incretin, thus enhancing insulin secretion and insulin sensitivity^[35]. GLP-1, which is suppressed in T2DM, is an insulinotropic hormone secreted from the gut in response to luminal glucose^[36]. It acts mainly as an incretin, promoting post-prandial insulin release and improving pancreatic β -cell function^[37]. Furthermore, GLP-1 exerts proliferative and anti-apoptotic effects on pancreatic β -cells^[38]. Interesting results have been recently reported with the use of GLP-1 agonists, now widely used in the treatment of T2DM^[39]. A novel procedure with ileal interposition has been used as an “ileal brake” to induce the early release of GLP-1 with favorable results^[40]. In contrast, peptide YY is an anorexic hormone co-secreted with GLP-1 from intestinal L cells in response to nutrients. It acts to decrease food intake due to faster satiation and may reduce insulin resistance. Most studies have shown the elevation of peptide YY together with GLP-1 in response to nutrients after RYGB, which is not observed after LAGB.

Ghrelin effect

Ghrelin is an orexigenic gut hormone and has stimulatory effects on growth hormone release. It is mainly secreted from the gastric fundus and displays an ultradian rhythm with an increase before meals and a decrease after meals. However, its levels are reduced in obese individuals compared with normal weight individuals. When this gastric segment is disconnected and isolated from food contact, fatigue in ghrelin hormone production is hypothesized to develop, which stops the ghrelin effects. Geloneze *et al.*^[41] demonstrated that ghrelin levels decrease dramatically in patients who have undergone RYGB. Ghrelin has also been shown to have diabetogenic effects^[42] because ghrelin administration in humans suppresses insulin secretion, even in the setting of ghrelin-induced hyperglycemia^[43]. However, published studies on ghrelin levels after gastric bypass are inconsistent and have shown that the levels increase, decrease or do not change after surgery^[44]. These inconsistent

findings might be due to variations in the surgical resection/isolation of the gastric fundus or to differences in the time of measurement of the ghrelin levels due to the physiological fluctuations of hormone levels. However, ghrelin is undoubtedly decreased after sleeve gastrectomy and, over the long term, may play an important role in the sustainable effect of weight loss after sleeve gastrectomy^[45].

Role of bile acid

Bile acids are a key stimulus for the farnesoid X receptor in the liver^[46,47], affecting hepatic metabolism and G-protein-coupled bile acid-activated receptors (TGR5) of the enteroendocrine L-cells^[48,49] and promoting the release of incretin. Therefore, bile acids play an important role in glucose homeostasis. Post-operative increases in circulating bile acids have been suggested to contribute to the metabolic benefits of bariatric surgery; however, their mechanisms remain undefined. Recent human clinical trials with the bile acid sequestrant colesevelam have shown its effectiveness in improving glycemic control in patients with T2DM^[50]. The re-route of nutrients due to altered physio-anatomy after gastric bypass may also affect the enterohepatic recirculation of bile acids and contribute to improved glycemic control^[51]. Therefore, manipulation of bile acid homeostasis might be an attractive approach for T2DM.

Role of microbiota

The microbiota of the intestine can affect the control of energy metabolism by increasing the energy harvested from the diet; thus, changes in the gut microbiota might contribute to the epidemics of obesity and T2DM in human evolution^[52]. However, the pathophysiology remains poorly understood. Probiotics, which include lactic acid bacteria, have been investigated extensively for their beneficial role in the alteration of gut microbiota by affecting the inflammatory state of the human body. Their role in T2DM was recently explored in an animal model. Naito *et al*^[53] reported that *Lactobacillus casei* in diet-induced obese mice has the potential to prevent obesity-associated metabolic abnormalities by improving insulin resistance. The weight-gain suppressive effect of *Lactobacillus* in high calorie-fed mice has also been reported; thus, it may be an alternative method for treating obesity^[54]. However, the translation of these beneficial animal study results into humans has still not been achieved.

EFFICACY OF GLYCEMIC CONTROL IN T2DM FOR BMI > 35 KG/M² VS BMI < 35 KG/M²

Multiple studies have demonstrated impressive improvements in T2DM after bariatric surgery in morbidly obese patients. In a meta-analysis of bariatric surgery involving 3188 patients with T2DM, Buchwald *et al*^[9] reported an overall 78% rate of complete diabetes remission that

lasted at least 2 years. The weight loss and diabetes resolution were greatest for patients undergoing BPD/DS, followed by RYGB, and least for gastric restrictive procedures, such as vertical gastric banding and LAGB^[9], with remission rates of 95%, 80%, 79% and 56%, respectively. The procedures producing greater excess weight loss led to higher remission rates. Moreover, in the morbidly obese population, there are compelling data on long term cardiovascular risk reduction and mortality based on the longitudinal prospective Swedish Obese Subjects study^[55,56]. The majority of patients underwent a gastric restrictive procedure rather than a gastric bypass procedure in this study.

Nevertheless, there is level 1 evidence showing the efficacy of bariatric surgery over medical therapy in T2DM, based on 4 randomized clinical trials (RCT) that directly compared bariatric surgery with a non-surgical intervention for the treatment of T2DM (Table 1). However, none of these trials exclusively enrolled patients with diabetes with a BMI < 35 kg/m².

The results of a study by Dixon *et al*^[57] strongly supported early surgical intervention in early obese diabetes. Interestingly, in their study subgroup with a BMI of 30-35 kg/m² (22% of the total cohort), there was evidence that glycemic control and weight loss were as efficacious as those in the higher BMI group. However, the Schauer *et al*^[34] study demonstrated that bariatric surgery was even effective in more advanced T2DM patients. The most recent multicenter RCT by Ikramuddin *et al*^[58] showed that there was a benefit of adding RYGB to optimal medical therapy instead of using medical therapy alone in achieving diabetes therapeutic goals (49% *vs* 19%) for cardiovascular risk reduction. This study included a higher proportion of the cohort with a BMI of 30-35 (59%), suggesting that metabolic surgery might play a very important role in cardio-metabolic risk reduction in patients with a BMI < 35 kg/m² and T2DM. All these trials included insufficient numbers of patients, used different diagnostic criteria for diabetes remission and had only 1-2 years of follow-up; therefore, cardiovascular risk reduction and the durability of glycemic control still remain to be defined using longer follow-up data in the future.

Currently, emerging data have shown good outcomes after metabolic surgery aiming to treat T2DM in less obese diabetics with a BMI < 35 kg/m²^[18,59-62]. The extraordinary glucose, lipid and blood pressure control reported in the published series^[63] also suggest good long-term effects on the cardiovascular risk profile and mortality.

Lee *et al*^[61] reported a prospective multicenter study of metabolic surgery involving 200 Asian patients with T2DM and a BMI < 35 kg/m², with an end point of T2DM remission, which was defined by a fasting plasma glucose < 110 mg/dL and HbA1C < 6.0%. In that study, 172 patients underwent gastric bypass, 24 underwent sleeve gastrectomy, and 4 underwent adjustable banding. At 1 year, the mean BMI decreased from 28.5

Table 1 Randomized controlled trials that directly compared the effectiveness of bariatric procedures with medical management for the treatment of type 2 diabetes

Trial	Dixon <i>et al</i> ^[57]	Schauer <i>et al</i> ^[34]	Mingrone <i>et al</i> ^[105]	Ikramuddin <i>et al</i> ^[58]
Intervention arms	LAGB; standard medical management	RYGB; LSG; medical management	RYGB; BPD; medical management	RYGB with medical management; medical management
Follow-up duration (yr)	2	1	2	1
Baseline characteristics				
<i>n</i>	60	150	60	120
Mean BMI (kg/m ²)	37 (30-40)	36 (27-43)	45 (35-60)	34 (30-40)
Duration of T2DM (yr)	< 2	> 8	6	9
Mean HbA1c	7.8%	9.2%	8.7%	9.6%
Primary end-point	FBG < 126 mg/dL with HbA1c < 6.2% without pharmacotherapy	HbA1c < 6% with or without pharmacotherapy	FBG < 100 mg/dL with HbA1c < 6.5% without pharmacotherapy	CV risk reduction with HbA1c < 7% with LDL cholesterol < 100 mg/dL and systolic BP < 130 mmHg
End results				
Diabetes remission	LAGB 73%; medical arm 13%	RYGB 42%; LSG 37%; medical arm 12%	BPD 95%; RYGB 75%; medical arm 0%	RYGB 75%; medical arm 32%
Mean HbA1c	LAGB 6.0%; medical arm 7.2%	RYGB 6.4%; LSG 6.6%; medical arm 7.5%	BPD 4.9%; RYGB 6.3%; medical arm 7.7%	RYGB 6.3%; medical arm 7.8%
Mean BMI (kg/m ²)	LAGB 29.5; medical arm 36.6	RYGB 26.8; LSG 27.2; medical arm 34.4	BPD 29.1; RYGB 29.3; medical arm 43.1	RYGB 25.8 medical arm 31.6
Mean excess weight loss	LAGB 62%; medical arm 4.3%	RYGB 88%; LSG 81%; medical arm 13%	BPD 69%; RYGB 68%; medical arm 9%	¹ RYGB 26.1 medical arm 7.9%
Major surgical complications	2 revision surgeries (6.7%) due to pouch enlargement; 1 required band removal due to persistent regurgitation	4 re-operations (4.0%) due to intra-abdominal hematoma, vomiting, cholecystectomy, and feeding access after gastric leak	2 re-operations (5.0%) due to incisional hernia and bowel obstruction. More nutritional risk in BPD than in RYGB	2 re-operations (3.3%) due to anastomotic leak. Surgical group had 50% more serious events with greater nutritional deficiency than medical arm
Mortality	Nil	Nil	Nil	Nil
Comment	This trial involved patients with early (< 2 yr) diabetes of mild severity (HbA1c < 7.8%), but only 22% of patients had BMI 30-35. This trial supported early surgical intervention for early obese T2DM	This trial involved patients with more advanced diabetes (> 8 years and HbA1c 9.2%), with 34% of patients having BMI < 35. This trial supported surgical intervention in more severe T2DM	This trial involved severely obese diabetic patients and showed the greater effectiveness of bariatric surgery over medical therapy in poorly controlled T2DM	This trial showed the potential benefits and risks of adding RYGB to the best medical therapy in achieving therapeutic goals for diabetes (49% vs 19%). This trial had a higher proportion of BMI 30-35 (59%)

¹Mean weight loss. T2DM: Type 2 diabetes mellitus; BMI: Body mass index; LAGB: Laparoscopic adjusted gastric banding; RYGB: Roux-en-Y gastric bypass; LSG: Laparoscopic sleeve gastrectomy; BPD: Bilio-pancreatic diversion; FBG: Fasting blood glucose; HbA1c: Glycosylated hemoglobin; LDL: Low density lipoprotein; CV: Cardiovascular.

to 23.4 kg/m², and HbA1c decreased to 6.3%. T2DM remission was achieved in 72.4% of the patients. Diabetes remission was significantly higher in patients with a duration of diabetes < 5 years and a BMI > 30 kg/m² who underwent gastric bypass surgery.

The longest prospective study on patients with T2DM and a BMI < 35 kg/m² and who underwent metabolic surgery was published by Cohen *et al*^[64]. In that study, 66 patients with a BMI of 30-35 kg/m², a disease duration of 12.5 ± 7.4 years and a baseline HbA1c 9.7 ± 1.5% underwent RYGB. At 6 years, with 100% follow-up, durable diabetic remission (defined as HbA1c < 6.5% without medication) was achieved in 66% of patients, with glycaemic improvement in 11% of patients and HbA1c reduced to 5.9%. There was no mortality, major morbidity or excessive weight loss. The improvement of hypertension, dyslipidemia and glycemia translated to a 50%-84% predicted 10-year cardiocerebral risk reduction.

Regarding the efficacy of metabolic surgery, two randomized clinical trials directly compared different bariatric procedures in a diabetic population. Lee *et al*^[33] ran-

domized 60 diabetic patients with a mean BMI of 30.3 to undergo either gastric bypass or sleeve gastrectomy. At 1 year, the gastric bypass group had a higher rate of diabetes remission, with HbA1c < 6.5% (93% vs 47%), a significantly higher reduction in weight (BMI 22.8 kg/m² vs 24.4 kg/m²), HbA1c change (4.2% vs 3.0%) and fasting glucose level change (99.3 mg/dL vs 140.1 mg/dL). Similarly, Schauer *et al*^[34] published a randomized trial with 3 different arms of gastric bypass, sleeve gastrectomy and medical therapy for diabetic patients; patients in the gastric bypass group lost more weight than those in the sleeve gastrectomy group (-29.4 kg vs -25.1 kg) at 1 year. Although there was no difference in glucose levels, 30% of patients in the sleeve gastrectomy group still needed medication to achieve the target level of HbA1c < 6.0%.

Although the best evidence is based on 1-2 years of short-term results from available randomized trials^[33,34,57,58], metabolic surgery for the treatment of T2DM in patients with a BMI of 30-35 kg/m² is promising. These data also indicate that gastric bypass is an effective metabolic

surgery because patients who underwent gastric bypass had more weight loss and higher diabetes remission rates than individuals who underwent restrictive-type procedures. Post-operative weight loss^[65,66] and a shorter duration of diabetes^[61] are still powerful predictors of early remission after metabolic surgery. Therefore, surgical results are not independent of initial BMI or weight loss. Caution is still required when performing metabolic surgery for low BMI patients.

INDICATIONS FOR METABOLIC SURGERY

Current guidelines^[67,68] strongly recommend that conventional bariatric surgery be considered for the treatment of T2DM in surgical candidates with poorly controlled diabetes and a BMI > 35 kg/m². However, according to the international diabetes federation (IDF) position statement from March 2011, surgery should be considered as an alternative treatment option in patients with a BMI between 30 and 35 when the diabetes cannot be adequately controlled with an optimal medical regimen, especially in the presence of other major cardiovascular disease risk factors. In Asians, the BMI cut-off point is 2.5 points lower compared with Western populations to reflect the higher obesity risk profile in Asian populations^[69]. Historically, that report was the first to include bariatric surgery in a diabetes treatment algorithm. For individual diabetic patients with a BMI < 30 kg/m², some data have shown encouraging results^[18,33,59,61,62,66,70-73]. As shown by our study, good outcomes could be achieved, especially for patients with some degree of weight loss, good β -cell function and central obesity^[61,66].

However, with metabolic surgery, the BMI may not be considered an appropriate selection criterion, as it does not reflect the metabolic profile of at-risk patients. The BMI was originally derived from the Caucasian population and may not be applicable to other populations, especially Asian populations^[74]. Moreover, BMI does not necessarily reflect the fat composition and distribution in the body, which affect metabolic risk^[74]. Studies have shown that insulin resistance is secondary to an increase in hepatic triglyceride content and visceral adiposity^[75,76], of which BMI is not a good indicator. T2DM individuals have been shown to have altered adipose tissue distribution with more visceral adipose tissue and intermuscular adipose tissue than subcutaneous tissue^[76]. In other words, BMI is a poor indicator of metabolically significant obesity^[74]. Therefore, BMI should not be used as the sole criterion for metabolic surgery^[77]. Suitable criteria that reflect the metabolic profile of patients are needed for the appropriate selection of patients for metabolic surgery.

TAILORED APPROACH FOR THE SELECTION OF THE APPROPRIATE METABOLIC SURGERY

The selection of patients for metabolic surgery should

be matched to an ideal risk-benefit profile to obtain the optimal outcomes of metabolic control. Therefore, we propose a tailored approach for the selection of metabolic surgery for poorly controlled T2DM.

LAGB is ideal for patients with early, newly diagnosed T2DM (< 2 years) and a BMI > 30 kg/m², as the mechanisms of glycemic control are calorie restriction and effective weight loss. The RCT by Dixon *et al.*^[57] has proven its role in early T2DM. LAGB results in more limited weight reduction with higher probability of repeated interventions due to band erosion and slippage but carries a minimal risk of long-term complications such as malnutrition and internal hernias.

LSG is suitable for individuals with a BMI > 27 kg/m² but with a duration of DM < 5 years and good C-peptide levels indicative of good pancreatic β -cell function^[73]. The metabolic effect is related to greater improvement in insulin resistance secondary to calorie restriction and weight loss rather than an increase in insulin secretion. Although the metabolic effect due to the hindgut effect with the elevation of GLP-1 and peptide YY has been reported, the long-term glycemic amelioration effect is still unknown. C-peptide > 3 ng/mL is the most important predictor of successful treatment^[73,78]. This procedure has the risk of acute complications such as leakage, bleeding and stricture due to very long stapler lines but carries minimal long-term nutritional risks.

RYGB, the most investigated metabolic procedure, is ideal for individuals with poorly controlled DM with a BMI > 27 kg/m². Studies have confirmed the superiority of gastric bypass over restrictive procedures due to the bypass of the hormonally active foregut and early nutrient stimulation of the hindgut^[33,34,79]. This procedure should be reserved for those with more advanced and long-standing T2DM. The surgical risks are acute complications such as anastomotic leakage and bleeding, and the long-term risks are malnutrition and internal hernias. For those subjects with a high operative risk, mini-gastric bypass is likely the best alternative due to the shorter surgical time and only one anastomosis.

BPD, which is a purely malabsorptive procedure with superior glycemic control^[9] compared with the above metabolic procedures, may not be appropriate in lower-BMI individuals due to the high complication rates and long-term malnutrition risk. Instead, the novel procedure of duodenal-jejunal bypass with sleeve gastrectomy (DJB-SG)^[80,81] should be considered, although the long-term results have not yet been reported (refer to new perspectives).

PATIENT SELECTION

The long-term risk of T2DM is highly associated with elevated HbA1c levels, not a high BMI^[82]. Therefore, considering the potential benefits of metabolic surgery and the risk of surgery in the BMI < 35 kg/m² population, the selection of the ideal candidate should be based on the presence of MetS with poorly controlled T2DM. In other words, the selection criteria should be specific

for diabetes and MetS.

The diabetes-specific criteria should include HbA1c, diabetes duration and C-peptide levels. Reducing HbA1c below 7% has been shown to reduce microvascular complications, and a reduction soon after the diagnosis of diabetes is associated with a long-term reduction in macrovascular disease^[68]. Therefore, the cut-off point of HbA1c is 7%, which indicates that poorly controlled glycemia is an appropriate selection criterion for metabolic surgery. Moreover, performing surgery on individuals with a short duration of diabetes, especially < 5 years, and a C-peptide > 2.9 ng/dL will produce better long-term outcomes due to better preserved pancreatic β -cell function^[61,66,83].

For metabolic-specific criteria, *waist circumference* (WC) is most likely a pragmatic clinical consideration. Central obesity is associated with the increasing prevalence of MetS with insulin resistance, which is driven by the strong relationship between WC and increasing adiposity. If diabetes is not already present, MetS is a strong predictor of T2DM, which is five times more likely to occur in individuals with this syndrome^[84]. Therefore, WC is a surrogate of metabolic disease with insulin resistance. WC as defined by the IDF, which is ethnically specific^[85], should be part of the clinical criteria for the selection of patients for metabolic surgery.

Given the operative risk of cardiovascular complications in this higher-risk group compared with the conventional bariatric population, metabolic surgery should be avoided in patients with any recent major cardiovascular event.

COMPLICATIONS

MetS is a constellation of syndromes, including T2DM, hypertension, hyperlipidemia and central obesity, that lead to increased cardiovascular disease. Although bariatric surgery is relatively safe, with a complication risk of 0.1%-0.3%, which is considered low even in the era of laparoscopic surgery and is similar to the complication risk of laparoscopic cholecystectomy^[86], the presence of MetS might be a risk factor for adverse events in bariatric surgery. In a study based on the Bariatric Outcomes Longitudinal Database, the national database for the American Society for Metabolic and Bariatric Surgery's Bariatric Surgery Center of Excellence Program, MetS patients had a higher incidence of early adverse outcomes compared with non-MetS patients^[87]. Patients with MetS tend to be older males with more visceral fat (central obesity), a higher incidence of obstructive sleep apnea and an American Society of Anesthesiologists category of Class III or greater that may lead to surgical difficulty with high peri-operative risk. The MetS patients had significantly higher incidences of serious complications (2.4% *vs* 1.0%) and mortality 90 d after bariatric surgery (0.3% *vs* 0.1%) compared with non-MetS patients. This finding is expected because individuals with MetS who already have a heightened pro-inflammatory state will

not be able to defend themselves against complications due to limited organ reserve. This risk is especially true for poor-health T2DM patients with impaired organ function.

Generally, the mortality and morbidity rates are low, most likely due to the standardization of surgical techniques and peri-operative care; however, post-operative complications can be serious and must be addressed promptly by surgeons who are familiar with these problems. For overweight patients with a BMI > 25 kg/m², there is no risk of excessive weight loss that will move them into the normal weight category^[16]. Given the risk of hypoglycemia immediately after metabolic surgery due to acute calorie restriction in diabetic patients, close monitoring of glucose levels with the appropriate withdrawal of anti-diabetes medications is essential post-operatively.

Metabolic surgery is a life-changing operation with associated risks and complications, especially long-term nutritional deficiencies. The surgical risk is not negligible, as shown in Table 1. Surgical intervention was associated with 50% more serious events with greater nutritional deficiency than medical therapy^[58]. Therefore, patients should be counselled regarding life-style modifications, especially the restrictions related to eating after surgery and the commitment to life-long follow-up to prevent potential complications. For lower BMI individuals, the risk of each metabolic procedure needs to be considered in light of the individual risk-benefit ratio with respect to potential reductions in diabetes-associated mortality and morbidity and improvements in the quality of life.

DURABILITY OF THE GLYCEMIC EFFECT

The durability and degree of glycemic control in different surgical procedures remain uncertain. Bypass procedures have been reported to have a higher degree of glycemic control and resolution of associated comorbidities^[9]. RYGB is more effective than LSG with respect to glycemic control^[33]. A small-scale prospective study in mildly obese patients (class 1 obesity) with long term follow-up showed that RYGB achieved 88% diabetic remission over 6 years, with glycemic improvement in 11% of patients^[64]. However, there is a substantial rate of relapse within 5 years after the initial diabetes remission^[88,89], which might suggest that metabolic surgery slows but does not prevent the progressive loss of the insulin secretory capacity of the pancreas. In relapsed patients, it is unclear how a period of good control after metabolic surgery will affect the long-term morbidity and mortality rates. Although the large ACCORD^[90], ADVANCE^[91] and UKPDS 33^[92] trials have suggested that tight glucose reduction has a microvascular benefit but not a macrovascular benefit, the legacy effect, as shown by the UKPDS study, is that the benefit of a brief period of intensive glycemic control in patients with T2DM might extend into subsequent years, with a reduced risk of macrovascular disease and mortality^[93]. Clearly, longer

Table 2 Diabetes surgery score system

Variable	Score			
	0	1	2	3
Age (yr)	≥ 40	< 40		
BMI (kg/m ²)	< 30	30-39	40-49	≥ 50
C-peptide (ng/mL)	< 2	2-3.9	4-6	> 6
Duration of T2DM (yr)	> 10	5-10	2-4.9	< 2

Total possible score ranges from 0 to 10. BMI: Body mass index; T2DM: Type 2 diabetes mellitus (data adapted from Lee *et al*^[98]).

term follow-ups in larger series are needed to clarify this important issue.

PROGNOSTIC FACTORS

Currently, there is no consensus regarding how to choose appropriate T2DM patients for metabolic surgery because various surgeries have different remission rates with different mechanisms^[94]. Offering surgery only to those patients who are young and in the early stages of diabetes with better preserved pancreatic β -cell mass may result in better outcomes. In addition, the variation of a patient's metabolic profile in poorly controlled diabetes might affect the reported remission rate in various published metabolic surgery results. Therefore, the ability to predict diabetes remission after metabolic surgery has great implications for choosing the type of surgical procedure that is best suited for particular patients and for evaluating the risk-benefit profile and the likelihood of success after surgery so that optimal metabolic surgery outcomes can be achieved. Perhaps, more importantly, we could avoid the unnecessary risk of surgery without a clear clinical benefit in patients who are not expected to respond well to metabolic surgery.

Generally, the possible predictors of diabetes remission that have been studied may produce better outcomes after metabolic surgery and might be related to younger age, better pancreatic β -cell function (C-peptide level), lower disease severity (duration of diabetes, intensity of medication and insulin dosage), lower obesity (BMI), the amount of weight loss, the high sensitivity C-reactive protein and insulin resistance^[18,61,65,78,83,95-97].

Dixon *et al*^[66] studied the factors that influence glyce-mic control following gastric bypass surgery in patients with T2DM and a BMI < 30 kg/m². A baseline BMI of < 27 kg/m² and C-peptide of < 2.0 ng/mL were associated with a poor glyce-mic response. A higher baseline BMI, shorter disease duration (< 7 years) and higher fasting C-peptide (> 2.4 ng/mL) with post-surgery weight loss (> 16%) were associated with excellent glyce-mic control. DiGiorgi *et al*^[88] reported that those patients who required insulin or oral medication before RYGB were more likely to experience improvement rather than resolution. The patients with recurrence or worsening associated with a lower preoperative BMI regained a greater percentage of lost weight, had a greater weight loss failure rate and had greater postoperative glucose

levels. However, all these factors might be inter-related, and it is difficult to interpret them without a clinically meaningful grading system to categorize and help select the most appropriate patients for metabolic surgery.

In Asia, Lee *et al*^[98] has advocated a simple but vali-dated multidimensional grading system for metabolic surgery (diabetic surgery score) to stratify T2DM patients with regard to their metabolic status and to predict the outcome of metabolic surgery (Table 2). Patients with a higher diabetic surgery score have a higher T2DM remis-sion rate (from 33% for score 0 to 100% for score 10); a 1-point increase in the score translates to an absolute 6.7% increase in the success rate. However, in patients with low scores (1-3), low remission rates (0%-33%) are expected. Therefore, this score might be used as a tool to achieve realistic expectations of the surgical outcome and might be used in future research to stratify the metabolic pro-file of patients according to the probability of diabetes remission instead of according to BMI alone. However, this grading system was derived from an Asian popula-tion, which is prone to diabetes at relatively younger ages with lower BMIs; therefore, the system may not be appli-cable to Western populations.

NEW PERSPECTIVES

Several investigations of metabolic procedures were in-troduced in recent years. As newer metabolic procedures, the efficacy, durability and safety of these procedures have yet to be established.

Duodenal-jejunal bypass

The duodenal-jejunal bypass stomach-sparing operation was introduced as a procedure that could induce the re-mission of diabetes without weight loss in lean diabetic patients. The operation is based on the work of Rubino and colleagues in Goto-Kakizaki genetically diabetic lean rats^[50]. Early human trials are encouraging^[70,99]. More-over, a novel procedure, DJB-SG, designed as a variant of the mini-duodenal switch by a combination of duo-denal-jejunal bypass and sleeve gastrectomy, has shown good outcomes in the treatment of T2DM^[80,81].

The EndoBarrier is a fluoropolymer sleeve that is reversibly fixed to the duodenal bulb and extends 80 cm into the small bowel, usually terminating in the proximal jejunum^[51]. This endoscopically inserted device facilitates weight loss through malabsorption by preventing the mixture of pancreatic juice and chyme. It also results in improved glyce-mic control by activating the hormonal triggers based on the foregut bypass theory. To date, the favorable outcomes have been based on short-term studies alone^[51]. The EndoBarrier has been reported to be implanted for 52 wk in patients with T2DM, with sta-tistically significant reductions in fasting blood glucose, fasting glucose and HbA1c by the end of the 52 wk in 16 out of 22 patients^[100]. Currently, its role in the pre-operative control of glyce-mia and weight loss, compared with a very low calorie diet, in morbidly obese patients

still needs to be defined. Although it is not a permanent procedure, it is non-invasive and could be used to explore, at the molecular level, the role of duodenal-jejunal dysfunction in the pathogenesis of T2DM.

Ileal interposition

Ileal interposition with the aim of early exposure of the hindgut to nutrients in order to increase the secretion of GLP-1, is still in the early stages of human trials^[40,101]. It was first described by DePaula as an operation that is specifically performed for the treatment of T2DM in non-morbidly obese patients^[102]. It functions as a neuroendocrine brake to increase the early phase of insulin secretion after meals, which is characteristically absent in T2DM^[103].

Metabolic surgery as a new clinical pathway

As most metabolic surgery is performed as part of a conventional bariatric program, Rubino *et al.*^[104] suggested that the separation of the clinical pathway of metabolic surgery from conventional bariatric surgery might have far-reaching clinical implications in terms of patient expectations, specific outcome measures, the involvement of appropriate multidisciplinary teams and the level of care. Moreover, the demographics of the referred patients were different from those of the conventional bariatric program, as they were much older males with a higher prevalence of severe diabetes, MetS and cardiovascular disease^[105]. These demographics might place these patients at higher risk compared with conventional bariatric surgery patients, which would necessitate more intense and detailed peri-operative care. Moreover, with the name change to diabetic/metabolic surgery, public perceptions may change because obesity is currently perceived as a life-style problem that requires behavioral therapy, but MetS and diabetes are perceived as chronic and deadly diseases that need to be treated effectively. This change in perception might encourage patients to seek surgery and might improve access to gastrointestinal metabolic surgery. Finally, an integrated and multidisciplinary approach to metabolic surgery, especially one that involves endocrinologists and surgeons, is necessary for addressing the issues and challenges in this evolving field.

CONCLUSION

Metabolic surgery is the most effective therapy for glycaemic control in poorly controlled T2DM. Further prospective longer-term studies are needed, especially in mildly obese T2DM patients (BMI < 35 kg/m²). For successful outcomes after surgery, the selection of patients with higher BMIs and better β -cell function will result in higher remission rates. We proposed a staging system to elucidate the metabolic profile of patients that might help more effectively select patients for surgery and result in better outcomes. Further research is required to establish new guidelines and indications for metabolic surgery in

less obese or lean patients.

In conclusion, T2DM can be considered a gastrointestinal disease that can be surgically treated. Interventional diabetology may be a new modality for diabetes care in the future. Novel surgical procedures may help elucidate the underlying pathophysiology and mechanism of T2DM, thus producing a better future for individuals with this deadly disease.

REFERENCES

- 1 Wild S, Roglic G, Green A, Sicree R, King H. Global prevalence of diabetes: estimates for the year 2000 and projections for 2030. *Diabetes Care* 2004; **27**: 1047-1053 [PMID: 15111519 DOI: 10.2337/diacare.27.5.1047]
- 2 Chan JC, Malik V, Jia W, Kadowaki T, Yajnik CS, Yoon KH, Hu FB. Diabetes in Asia: epidemiology, risk factors, and pathophysiology. *JAMA* 2009; **301**: 2129-2140 [PMID: 19470990 DOI: 10.1001/jama.2009.726]
- 3 Xu Y, Wang L, He J, Bi Y, Li M, Wang T, Wang L, Jiang Y, Dai M, Lu J, Xu M, Li Y, Hu N, Li J, Mi S, Chen CS, Li G, Mu Y, Zhao J, Kong L, Chen J, Lai S, Wang W, Zhao W, Ning G. Prevalence and control of diabetes in Chinese adults. *JAMA* 2013; **310**: 948-959 [PMID: 24002281 DOI: 10.1001/jama.2013.168118]
- 4 Sjöström L, Lindroos AK, Peltonen M, Torgerson J, Boucharde C, Carlsson B, Dahlgren S, Larsson B, Narbro K, Sjöström CD, Sullivan M, Wedel H. Lifestyle, diabetes, and cardiovascular risk factors 10 years after bariatric surgery. *N Engl J Med* 2004; **351**: 2683-2693 [PMID: 15616203 DOI: 10.1056/NEJMoa035622]
- 5 U.K. prospective diabetes study 16. Overview of 6 years' therapy of type II diabetes: a progressive disease. U.K. Prospective Diabetes Study Group. *Diabetes* 1995; **44**: 1249-1258 [PMID: 7589820 DOI: 10.2337/diab.44.11.1249]
- 6 Liebl A, Mata M, Eschwège E. Evaluation of risk factors for development of complications in Type II diabetes in Europe. *Diabetologia* 2002; **45**: S23-S28 [PMID: 12136408 DOI: 10.1007/s00125-002-0863-0]
- 7 Resnick HE, Foster GL, Bardsley J, Ratner RE. Achievement of American Diabetes Association clinical practice recommendations among U.S. adults with diabetes, 1999-2002: the National Health and Nutrition Examination Survey. *Diabetes Care* 2006; **29**: 531-537 [PMID: 16505501 DOI: 10.2337/diacare.29.03.06.dc05-1254]
- 8 Rubino F, Gagner M. Potential of surgery for curing type 2 diabetes mellitus. *Ann Surg* 2002; **236**: 554-559 [PMID: 12409659 DOI: 10.1097/01.SLA.0000032951.37471.80]
- 9 Buchwald H, Estok R, Fahrbach K, Banel D, Jensen MD, Pories WJ, Bantle JP, Sledge I. Weight and type 2 diabetes after bariatric surgery: systematic review and meta-analysis. *Am J Med* 2009; **122**: 248-256.e5 [PMID: 19272486 DOI: 10.1016/j.amjmed.2008.09.041]
- 10 Zimmet P, Alberti KG, Shaw J. Global and societal implications of the diabetes epidemic. *Nature* 2001; **414**: 782-787 [PMID: 11742409 DOI: 10.1038/414782a]
- 11 Ferrannini E, Natali A, Bell P, Cavallo-Perin P, Lalic N, Mingrone G. Insulin resistance and hypersecretion in obesity. European Group for the Study of Insulin Resistance (EGIR). *J Clin Invest* 1997; **100**: 1166-1173 [PMID: 9303923 DOI: 10.1172/JCI119628]
- 12 Bays HE, González-Campoy JM, Bray GA, Kitabchi AE, Bergman DA, Schorr AB, Rodbard HW, Henry RR. Pathogenic potential of adipose tissue and metabolic consequences of adipocyte hypertrophy and increased visceral adiposity. *Expert Rev Cardiovasc Ther* 2008; **6**: 343-368 [PMID: 18327995 DOI: 10.1586/14779072.6.3.343]
- 13 Bays HE, Laferrère B, Dixon J, Aronne L, González-Campoy JM, Apovian C, Wolfe BM. Adiposopathy and bariatric surgery:

- is 'sick fat' a surgical disease? *Int J Clin Pract* 2009; **63**: 1285-1300 [PMID: 19691612 DOI: 10.1111/j.1742-1241.2009.02151.x]
- 14 **Bays H**, Mandarino L, DeFronzo RA. Role of the adipocyte, free fatty acids, and ectopic fat in pathogenesis of type 2 diabetes mellitus: peroxisomal proliferator-activated receptor agonists provide a rational therapeutic approach. *J Clin Endocrinol Metab* 2004; **89**: 463-478 [PMID: 14764748 DOI: 10.1210/jc.2003-030723]
 - 15 **Pontioli AE**, Frigè F, Paganelli M, Folli F. In morbid obesity, metabolic abnormalities and adhesion molecules correlate with visceral fat, not with subcutaneous fat: effect of weight loss through surgery. *Obes Surg* 2009; **19**: 745-750 [PMID: 18629594 DOI: 10.1007/s11695-008-9626-4]
 - 16 **Rubino F**, Schauer PR, Kaplan LM, Cummings DE. Metabolic surgery to treat type 2 diabetes: clinical outcomes and mechanisms of action. *Annu Rev Med* 2010; **61**: 393-411 [PMID: 20059345 DOI: 10.1146/annurev.med.051308.105148]
 - 17 **Isbell JM**, Tamboli RA, Hansen EN, Saliba J, Dunn JP, Phillips SE, Marks-Shulman PA, Abumrad NN. The importance of caloric restriction in the early improvements in insulin sensitivity after Roux-en-Y gastric bypass surgery. *Diabetes Care* 2010; **33**: 1438-1442 [PMID: 20368410 DOI: 10.2337/dc09-2107]
 - 18 **Lee WJ**, Chong K, Chen CY, Chen SC, Lee YC, Ser KH, Chuang LM. Diabetes remission and insulin secretion after gastric bypass in patients with body mass index ≥ 35 kg/m². *Obes Surg* 2011; **21**: 889-895 [PMID: 21499957 DOI: 10.1007/s11695-011-0401-6]
 - 19 **Lee WJ**, Lee YC, Ser KH, Chen JC, Chen SC. Improvement of insulin resistance after obesity surgery: a comparison of gastric banding and bypass procedures. *Obes Surg* 2008; **18**: 1119-1125 [PMID: 18317853 DOI: 10.1007/s11695-008-9457-3]
 - 20 **Kirk E**, Reeds DN, Finck BN, Mayurranjan SM, Patterson BW, Klein S. Dietary fat and carbohydrates differentially alter insulin sensitivity during caloric restriction. *Gastroenterology* 2009; **136**: 1552-1560 [PMID: 19208352 DOI: 10.1053/j.gastro.2009.01.048]
 - 21 **Rao RS**, Yanagisawa R, Kini S. Insulin resistance and bariatric surgery. *Obes Rev* 2012; **13**: 316-328 [PMID: 22106981 DOI: 10.1111/j.1467-789X.2011.00955.x]
 - 22 **Campos GM**, Rabl C, Peeva S, Ciofica R, Rao M, Schwarz JM, Havel P, Schambelan M, Mulligan K. Improvement in peripheral glucose uptake after gastric bypass surgery is observed only after substantial weight loss has occurred and correlates with the magnitude of weight lost. *J Gastrointest Surg* 2010; **14**: 15-23 [PMID: 19838759 DOI: 10.1007/s11605-009-1060-y]
 - 23 **Muscelli E**, Mingrone G, Camastra S, Manco M, Pereira JA, Pareja JC, Ferrannini E. Differential effect of weight loss on insulin resistance in surgically treated obese patients. *Am J Med* 2005; **118**: 51-57 [PMID: 15639210 DOI: 10.1016/j.amjmed.2004.08.017]
 - 24 **Camastra S**, Gastaldelli A, Mari A, Bonuccelli S, Scartabelli G, Frascerra S, Baldi S, Nannipieri M, Rebelos E, Anselmino M, Muscelli E, Ferrannini E. Early and longer term effects of gastric bypass surgery on tissue-specific insulin sensitivity and beta cell function in morbidly obese patients with and without type 2 diabetes. *Diabetologia* 2011; **54**: 2093-2102 [PMID: 21614570 DOI: 10.1007/s00125-011-2193-6]
 - 25 **Mari A**, Manco M, Guidone C, Nanni G, Castagneto M, Mingrone G, Ferrannini E. Restoration of normal glucose tolerance in severely obese patients after bilio-pancreatic diversion: role of insulin sensitivity and beta cell function. *Diabetologia* 2006; **49**: 2136-2143 [PMID: 16819611 DOI: 10.1007/s00125-006-0337-x]
 - 26 **Ferrannini E**, Mingrone G. Impact of different bariatric surgical procedures on insulin action and beta-cell function in type 2 diabetes. *Diabetes Care* 2009; **32**: 514-520 [PMID: 19246589 DOI: 10.2337/dc08-1762]
 - 27 **Guidone C**, Manco M, Valera-Mora E, Iaconelli A, Gniuli D, Mari A, Nanni G, Castagneto M, Calvani M, Mingrone G. Mechanisms of recovery from type 2 diabetes after malabsorptive bariatric surgery. *Diabetes* 2006; **55**: 2025-2031 [PMID: 16804072 DOI: 10.2337/db06-0068]
 - 28 **Rosa G**, Mingrone G, Manco M, Euthine V, Gniuli D, Calvani R, Calvani M, Favuzzi AM, Castagneto M, Vidal H. Molecular mechanisms of diabetes reversibility after bariatric surgery. *Int J Obes (Lond)* 2007; **31**: 1429-1436 [PMID: 17515913 DOI: 10.1038/sj.ijo.0803630]
 - 29 **Pournaras DJ**, Osborne A, Hawkins SC, Vincent RP, Mahon D, Ewings P, Ghatei MA, Bloom SR, Welbourn R, le Roux CW. Remission of type 2 diabetes after gastric bypass and banding: mechanisms and 2 year outcomes. *Ann Surg* 2010; **252**: 966-971 [PMID: 21107106 DOI: 10.1097/SLA.0b013e3181efc49a]
 - 30 **Rubino F**, Forgione A, Cummings DE, Vix M, Gniuli D, Mingrone G, Castagneto M, Marescaux J. The mechanism of diabetes control after gastrointestinal bypass surgery reveals a role of the proximal small intestine in the pathophysiology of type 2 diabetes. *Ann Surg* 2006; **244**: 741-749 [PMID: 17060767 DOI: 10.1097/01.sla.0000224726.61448.1b]
 - 31 **Patel SR**, Hakim D, Mason J, Hakim N. The duodenal-jejunal bypass sleeve (EndoBarrier Gastrointestinal Liner) for weight loss and treatment of type 2 diabetes. *Surg Obes Relat Dis* 2013; **9**: 482-484 [PMID: 23452926 DOI: 10.1016/j.soard.2013.01.015]
 - 32 **Zhang XJ**, Xiao Z, Yu HL, Zhang XX, Cheng Z, Tian HM. Short-term glucose metabolism and gut hormone modulations after Billroth II gastrojejunostomy in nonobese gastric cancer patients with type 2 diabetes mellitus, impaired glucose tolerance and normal glucose tolerance. *Arch Med Res* 2013; **44**: 437-443 [PMID: 23973197 DOI: 10.1016/j.arcmed.2013.07.004]
 - 33 **Lee WJ**, Chong K, Ser KH, Lee YC, Chen SC, Chen JC, Tsai MH, Chuang LM. Gastric bypass vs sleeve gastrectomy for type 2 diabetes mellitus: a randomized controlled trial. *Arch Surg* 2011; **146**: 143-148 [PMID: 21339423 DOI: 10.1001/archsurg.2010.326]
 - 34 **Schauer PR**, Kashyap SR, Wolski K, Brethauer SA, Kirwan JP, Pothier CE, Thomas S, Abood B, Nissen SE, Bhatt DL. Bariatric surgery versus intensive medical therapy in obese patients with diabetes. *N Engl J Med* 2012; **366**: 1567-1576 [PMID: 22449319 DOI: 10.1056/NEJMoa1200225]
 - 35 **Melissas J**, Leventi A, Klinaki I, Perisinakis K, Koukouraki S, de Bree E, Karkavitsas N. Alterations of global gastrointestinal motility after sleeve gastrectomy: a prospective study. *Ann Surg* 2013; **258**: 976-982 [PMID: 23160151 DOI: 10.1097/SLA.0b013e3182774522]
 - 36 **Orskov C**, Wettergren A, Holst JJ. Secretion of the incretin hormones glucagon-like peptide-1 and gastric inhibitory polypeptide correlates with insulin secretion in normal man throughout the day. *Scand J Gastroenterol* 1996; **31**: 665-670 [PMID: 8819215 DOI: 10.3109/00365529609009147]
 - 37 **Fariña L**, Bulotta A, Hirshberg B, Li Calzi S, Khoury N, Noushmehr H, Bertolotto C, Di Mario U, Harlan DM, Perfetti R. Glucagon-like peptide 1 inhibits cell apoptosis and improves glucose responsiveness of freshly isolated human islets. *Endocrinology* 2003; **144**: 5149-5158 [PMID: 12960095 DOI: 10.1210/en.2003-0323]
 - 38 **Drucker DJ**. Glucagon-like peptide-1 and the islet beta-cell: augmentation of cell proliferation and inhibition of apoptosis. *Endocrinology* 2003; **144**: 5145-5148 [PMID: 14645210 DOI: 10.1210/en.2003-1147]
 - 39 **Schwartz S**, DeFronzo RA. Is incretin-based therapy ready for the care of hospitalized patients with type 2 diabetes?: The time has come for GLP-1 receptor agonists! *Diabetes Care* 2013; **36**: 2107-2111 [PMID: 23801800 DOI: 10.2337/dc12-2060]
 - 40 **Tinoco A**, El-Kadre L, Aquiar L, Tinoco R, Savassi-Rocha P. Short-term and mid-term control of type 2 diabetes mellitus by laparoscopic sleeve gastrectomy with ileal interposition. *World J Surg* 2011; **35**: 2238-2244 [PMID: 21744166 DOI: 10.1007/s00268-011-1188-2]
 - 41 **Geloneze B**, Tambascia MA, Pilla VF, Geloneze SR, Repetto

- EM, Pareja JC. Ghrelin: a gut-brain hormone: effect of gastric bypass surgery. *Obes Surg* 2003; **13**: 17-22 [PMID: 12630608 DOI: 10.1381/096089203321136539]
- 42 **Cummings DE**, Shannon MH. Roles for ghrelin in the regulation of appetite and body weight. *Arch Surg* 2003; **138**: 389-396 [PMID: 12686525 DOI: 10.1001/archsurg.138.4.389]
- 43 **Broglio F**, Arvat E, Benso A, Gottero C, Muccioli G, Papotti M, van der Lely AJ, Deghenghi R, Ghigo E. Ghrelin, a natural GH secretagogue produced by the stomach, induces hyperglycemia and reduces insulin secretion in humans. *J Clin Endocrinol Metab* 2001; **86**: 5083-5086 [PMID: 11600590 DOI: 10.1210/jc.86.10.5083]
- 44 **Tymitz K**, Engel A, McDonough S, Hendy MP, Kerlakian G. Changes in ghrelin levels following bariatric surgery: review of the literature. *Obes Surg* 2011; **21**: 125-130 [PMID: 21104455 DOI: 10.1007/s11695-010-0311-z]
- 45 **Patrikakos P**, Toutouzas KG, Gazouli M, Perrea D, Menenakos E, Papadopoulos S, Zografos G. Long-term plasma ghrelin and leptin modulation after sleeve gastrectomy in Wistar rats in comparison with gastric tissue ghrelin expression. *Obes Surg* 2011; **21**: 1432-1437 [PMID: 21611877 DOI: 10.1007/s11695-011-0426-x]
- 46 **Neuschwander-Tetri BA**. Farnesoid x receptor agonists: what they are and how they might be used in treating liver disease. *Curr Gastroenterol Rep* 2012; **14**: 55-62 [PMID: 22094889 DOI: 10.1007/s11894-011-0232-6]
- 47 **Teodoro JS**, Rolo AP, Palmeira CM. Hepatic FXR: key regulator of whole-body energy metabolism. *Trends Endocrinol Metab* 2011; **22**: 458-466 [PMID: 21862343 DOI: 10.1016/j.tem.2011.07.002]
- 48 **Stepanov V**, Stankov K, Mikov M. The bile acid membrane receptor TGR5: a novel pharmacological target in metabolic, inflammatory and neoplastic disorders. *J Recept Signal Transduct Res* 2013; **33**: 213-223 [PMID: 23782454 DOI: 10.3109/10799893.2013.802805]
- 49 **Parker HE**, Wallis K, le Roux CW, Wong KY, Reimann F, Gribble FM. Molecular mechanisms underlying bile acid-stimulated glucagon-like peptide-1 secretion. *Br J Pharmacol* 2012; **165**: 414-423 [PMID: 21718300 DOI: 10.1111/j.1476-5381.2011.01561.x]
- 50 **Ooi CP**, Loke SC. Colesevelam for Type 2 diabetes mellitus: an abridged Cochrane review. *Diabet Med* 2014; **31**: 2-14 [PMID: 24024701 DOI: 10.1111/dme.12295]
- 51 **Pournaras DJ**, Glicksman C, Vincent RP, Kuganolipava S, Alaghband-Zadeh J, Mahon D, Bekker JH, Ghatei MA, Bloom SR, Walters JR, Welbourn R, le Roux CW. The role of bile after Roux-en-Y gastric bypass in promoting weight loss and improving glycaemic control. *Endocrinology* 2012; **153**: 3613-3619 [PMID: 22673227 DOI: 10.1210/en.2011-2145]
- 52 **Kootte RS**, Vrieze A, Holleman F, Dallinga-Thie GM, Zoetendal EG, de Vos WM, Groen AK, Hoekstra JB, Stroes ES, Nieuwdorp M. The therapeutic potential of manipulating gut microbiota in obesity and type 2 diabetes mellitus. *Diabetes Obes Metab* 2012; **14**: 112-120 [PMID: 21812894 DOI: 10.1111/j.1463-1326.2011.01483.x]
- 53 **Naito E**, Yoshida Y, Makino K, Kounoshi Y, Kunihiro S, Takahashi R, Matsuzaki T, Miyazaki K, Ishikawa F. Beneficial effect of oral administration of *Lactobacillus casei* strain Shirota on insulin resistance in diet-induced obesity mice. *J Appl Microbiol* 2011; **110**: 650-657 [PMID: 21281408 DOI: 10.1111/j.1365-2672.2010.04922.x]
- 54 **Kang JH**, Yun SI, Park HO. Effects of *Lactobacillus gasseri* BNR17 on body weight and adipose tissue mass in diet-induced overweight rats. *J Microbiol* 2010; **48**: 712-714 [PMID: 21046354 DOI: 10.1007/s12275-010-0363-8]
- 55 **Sjöström L**, Peltonen M, Jacobson P, Sjöström CD, Karason K, Wedel H, Ahlin S, Anveden Å, Bengtsson C, Bergmark G, Bouchard C, Carlsson B, Dahlgren S, Carlsson J, Lindroos AK, Lönroth H, Narbro K, Näslund I, Olbers T, Svensson PA, Carlsson LM. Bariatric surgery and long-term cardiovascular events. *JAMA* 2012; **307**: 56-65 [PMID: 22215166 DOI: 10.1001/jama.2011.1914]
- 56 **Sjöström L**, Narbro K, Sjöström CD, Karason K, Larsson B, Wedel H, Lystig T, Sullivan M, Bouchard C, Carlsson B, Bengtsson C, Dahlgren S, Gummesson A, Jacobson P, Karlsson J, Lindroos AK, Lönroth H, Näslund I, Olbers T, Stenlöf K, Torgerson J, Agren G, Carlsson LM. Effects of bariatric surgery on mortality in Swedish obese subjects. *N Engl J Med* 2007; **357**: 741-752 [PMID: 17715408 DOI: 10.1056/NEJMoa066254]
- 57 **Dixon JB**, O'Brien PE, Playfair J, Chapman L, Schachter LM, Skinner S, Proietto J, Bailey M, Anderson M. Adjustable gastric banding and conventional therapy for type 2 diabetes: a randomized controlled trial. *JAMA* 2008; **299**: 316-323 [PMID: 18212316 DOI: 10.1001/jama.299.3.316]
- 58 **Ikramuddin S**, Korner J, Lee WJ, Connett JE, Inabnet WB, Billington CJ, Thomas AJ, Leslie DB, Chong K, Jeffery RW, Ahmed L, Vella A, Chuang LM, Bessler M, Sarr MG, Swain JM, Laqua P, Jensen MD, Bantle JP. Roux-en-Y gastric bypass vs intensive medical management for the control of type 2 diabetes, hypertension, and hyperlipidemia: the Diabetes Surgery Study randomized clinical trial. *JAMA* 2013; **309**: 2240-2249 [PMID: 23736733 DOI: 10.1001/jama.2013.5835]
- 59 **Shah SS**, Todkar JS, Shah PS, Cummings DE. Diabetes remission and reduced cardiovascular risk after gastric bypass in Asian Indians with body mass index $\geq 35\text{ kg/m}^2$. *Surg Obes Relat Dis* 2010; **6**: 332-338 [PMID: 19846351 DOI: 10.1016/j.soard.2009.08.009]
- 60 **Huang CK**, Shabbir A, Lo CH, Tai CM, Chen YS, Houng JY. Laparoscopic Roux-en-Y gastric bypass for the treatment of type II diabetes mellitus in Chinese patients with body mass index of 25-35. *Obes Surg* 2011; **21**: 1344-1349 [PMID: 21479764 DOI: 10.1007/s11695-011-0408-z]
- 61 **Lee WJ**, Hur KY, Lakadawala M, Kasama K, Wong SK, Lee YC. Gastrointestinal metabolic surgery for the treatment of diabetic patients: a multi-institutional international study. *J Gastrointest Surg* 2012; **16**: 45-51; discussion 51-52 [PMID: 22042564 DOI: 10.1007/s11605-011-1740-2]
- 62 **Scopinaro N**, Adami GF, Papadia FS, Camerini G, Carlini F, Fried M, Briatore L, D'Alessandro G, Andraghetti G, Cordera R. Effects of biliopancreatic diversion on type 2 diabetes in patients with BMI 25 to 35. *Ann Surg* 2011; **253**: 699-703 [PMID: 21475009 DOI: 10.1097/SLA.0b013e318203ae44]
- 63 **Maggard-Gibbons M**, Maglione M, Livhits M, Ewing B, Mather AR, Hu J, Li Z, Shekelle PG. Bariatric surgery for weight loss and glycemic control in nonmorbidly obese adults with diabetes: a systematic review. *JAMA* 2013; **309**: 2250-2261 [PMID: 23736734 DOI: 10.1001/jama.2013.4851]
- 64 **Cohen RV**, Pinheiro JC, Schiavon CA, Salles JE, Wajchenberg BL, Cummings DE. Effects of gastric bypass surgery in patients with type 2 diabetes and only mild obesity. *Diabetes Care* 2012; **35**: 1420-1428 [PMID: 22723580 DOI: 10.2337/dc11-2289]
- 65 **Kadera BE**, Lum K, Grant J, Pryor AD, Portenier DD, DeMaria EJ. Remission of type 2 diabetes after Roux-en-Y gastric bypass is associated with greater weight loss. *Surg Obes Relat Dis* 2009; **5**: 305-309 [PMID: 19460674 DOI: 10.1016/j.soard.2009.02.007]
- 66 **Dixon JB**, Hur KY, Lee WJ, Kim MJ, Chong K, Chen SC, Straznicky NE, Zimmet P. Gastric bypass in Type 2 diabetes with BMI ≥ 30: weight and weight loss have a major influence on outcomes. *Diabet Med* 2013; **30**: e127-e134 [PMID: 23278432 DOI: 10.1111/dme.12107]
- 67 **Rubino F**, Kaplan LM, Schauer PR, Cummings DE. The Diabetes Surgery Summit consensus conference: recommendations for the evaluation and use of gastrointestinal surgery to treat type 2 diabetes mellitus. *Ann Surg* 2010; **251**: 399-405 [PMID: 19934752 DOI: 10.1097/SLA.0b013e3181be34e7]
- 68 **American Diabetes Association**. Standards of medical care in diabetes--2013. *Diabetes Care* 2013; **36** Suppl 1: S11-S66

- [PMID: 23264422 DOI: 10.2337/dc13-S011]
- 69 **Haslam DW**, James WP. Obesity. *Lancet* 2005; **366**: 1197-1209 [PMID: 16198769 DOI: 10.1016/S0140-6736(05)67483-1]
- 70 **Cohen R**, Caravatto PP, Correa JL, Noujaim P, Petry TZ, Salles JE, Schiavon CA. Glycemic control after stomach-sparing duodenal-jejunal bypass surgery in diabetic patients with low body mass index. *Surg Obes Relat Dis* 2012; **8**: 375-380 [PMID: 22410638 DOI: 10.1016/j.soard.2012.01.017]
- 71 **Geloneze B**, Geloneze SR, Chaim E, Hirsch FF, Felici AC, Lambert G, Tambascia MA, Pareja JC. Metabolic surgery for non-obese type 2 diabetes: incretins, adipocytokines, and insulin secretion/resistance changes in a 1-year interventional clinical controlled study. *Ann Surg* 2012; **256**: 72-78 [PMID: 22664560 DOI: 10.1097/SLA.0b013e3182592c62]
- 72 **Lee HC**, Kim MK, Kwon HS, Kim E, Song KH. Early changes in incretin secretion after laparoscopic duodenal-jejunal bypass surgery in type 2 diabetic patients. *Obes Surg* 2010; **20**: 1530-1535 [PMID: 20803098 DOI: 10.1007/s11695-010-0248-2]
- 73 **Lee WJ**, Ser KH, Chong K, Lee YC, Chen SC, Tsou JJ, Chen JC, Chen CM. Laparoscopic sleeve gastrectomy for diabetes treatment in nonmorbidly obese patients: efficacy and change of insulin secretion. *Surgery* 2010; **147**: 664-669 [PMID: 20004451 DOI: 10.1016/j.surg.2009.10.059]
- 74 **Porjes WJ**, Dohm LG, Mansfield CJ. Beyond the BMI: the search for better guidelines for bariatric surgery. *Obesity* (Silver Spring) 2010; **18**: 865-871 [PMID: 20150899 DOI: 10.1038/oby.2010.8]
- 75 **Fabbrini E**, Magkos F, Mohammed BS, Pietka T, Abumrad NA, Patterson BW, Okunade A, Klein S. Intrahepatic fat, not visceral fat, is linked with metabolic complications of obesity. *Proc Natl Acad Sci USA* 2009; **106**: 15430-15435 [PMID: 19706383 DOI: 10.1073/pnas.0904944106]
- 76 **Gallagher D**, Kelley DE, Yim JE, Spence N, Albu J, Boxt L, Pi-Sunyer FX, Heshka S. Adipose tissue distribution is different in type 2 diabetes. *Am J Clin Nutr* 2009; **89**: 807-814 [PMID: 19158213 DOI: 10.3945/ajcn.2008.26955]
- 77 **Sjöholm K**, Anveden A, Peltonen M, Jacobson P, Romeo S, Svensson PA, Sjöström L, Carlsson LM. Evaluation of current eligibility criteria for bariatric surgery: diabetes prevention and risk factor changes in the Swedish obese subjects (SOS) study. *Diabetes Care* 2013; **36**: 1335-1340 [PMID: 23359358 DOI: 10.2337/dc12-1395]
- 78 **Lee WJ**, Chong K, Ser KH, Chen JC, Lee YC, Chen SC, Su YH, Tsai MH. C-peptide predicts the remission of type 2 diabetes after bariatric surgery. *Obes Surg* 2012; **22**: 293-298 [PMID: 22139820 DOI: 10.1007/s11695-011-0565-0]
- 79 **Thaler JP**, Cummings DE. Minireview: Hormonal and metabolic mechanisms of diabetes remission after gastrointestinal surgery. *Endocrinology* 2009; **150**: 2518-2525 [PMID: 19372197 DOI: 10.1210/en.2009-0367]
- 80 **Kasama K**, Tagaya N, Kanehira E, Oshiro T, Seki Y, Kinouchi M, Umezawa A, Negishi Y, Kurokawa Y. Laparoscopic sleeve gastrectomy with duodenojejunal bypass: technique and preliminary results. *Obes Surg* 2009; **19**: 1341-1345 [PMID: 19626382 DOI: 10.1007/s11695-009-9873-z]
- 81 **Lee WJ**, Lee KT, Kasama K, Seiki Y, Ser KH, Chun SC, Chen JC, Lee YC. Laparoscopic single-anastomosis duodenal-jejunal bypass with sleeve gastrectomy (SADJB-SG): short-term result and comparison with gastric bypass. *Obes Surg* 2014; **24**: 109-113 [PMID: 23990452 DOI: 10.1007/s11695-013-1067-z]
- 82 The relationship of glycemic exposure (HbA1c) to the risk of development and progression of retinopathy in the diabetes control and complications trial. *Diabetes* 1995; **44**: 968-983 [PMID: 7622004 DOI: 10.2337/diab.44.8.968]
- 83 **Dixon JB**, Chuang LM, Chong K, Chen SC, Lambert GW, Straznicky NE, Lambert EA, Lee WJ. Predicting the glycemic response to gastric bypass surgery in patients with type 2 diabetes. *Diabetes Care* 2013; **36**: 20-26 [PMID: 23033249 DOI: 10.2337/dc12-0779]
- 84 **Stern MP**, Williams K, González-Villalpando C, Hunt KJ, Haffner SM. Does the metabolic syndrome improve identification of individuals at risk of type 2 diabetes and/or cardiovascular disease? *Diabetes Care* 2004; **27**: 2676-2681 [PMID: 15505004 DOI: 10.2337/diacare.27.11.2676]
- 85 **Alberti KG**, Zimmet P, Shaw J. Metabolic syndrome--a new world-wide definition. A Consensus Statement from the International Diabetes Federation. *Diabet Med* 2006; **23**: 469-480 [PMID: 16681555 DOI: 10.1111/j.1464-5491.2006.01858.x]
- 86 **Buchwald H**, Estok R, Fahrenbach K, Banel D, Sledge I. Trends in mortality in bariatric surgery: a systematic review and meta-analysis. *Surgery* 2007; **142**: 621-632; discussion 632-635 [PMID: 17950357 DOI: 10.1016/j.surg.2007.07.018]
- 87 **Inabnet WB**, Winegar DA, Sherif B, Sarr MG. Early outcomes of bariatric surgery in patients with metabolic syndrome: an analysis of the bariatric outcomes longitudinal database. *J Am Coll Surg* 2012; **214**: 550-556; discussion 556-557 [PMID: 22321517 DOI: 10.1016/j.jamcollsurg.2011.12.019]
- 88 **DiGiorgi M**, Rosen DJ, Choi JJ, Milone L, Schrope B, Olivero-Rivera L, Restuccia N, Yuen S, Fisk M, Inabnet WB, Bessler M. Re-emergence of diabetes after gastric bypass in patients with mid- to long-term follow-up. *Surg Obes Relat Dis* 2010; **6**: 249-253 [PMID: 20510288 DOI: 10.1016/j.soard.2009.09.019]
- 89 **Chikunguwo SM**, Wolfe LG, Dodson P, Meador JG, Baugh N, Clore JN, Kellum JM, Maher JW. Analysis of factors associated with durable remission of diabetes after Roux-en-Y gastric bypass. *Surg Obes Relat Dis* 2010; **6**: 254-259 [PMID: 20303324 DOI: 10.1016/j.soard.2009.11.003]
- 90 **Gerstein HC**, Miller ME, Byington RP, Goff DC, Bigger JT, Buse JB, Cushman WC, Genuth S, Ismail-Beigi F, Grimm RH, Probstfield JL, Simons-Morton DG, Friedewald WT. Effects of intensive glucose lowering in type 2 diabetes. *N Engl J Med* 2008; **358**: 2545-2559 [PMID: 18539917 DOI: 10.1056/NEJMoa0802743]
- 91 **Patel A**, MacMahon S, Chalmers J, Neal B, Billot L, Woodward M, Marre M, Cooper M, Glasziou P, Grobbee D, Hamet P, Harrap S, Heller S, Liu L, Mancia G, Mogensen CE, Pan C, Poulter N, Rodgers A, Williams B, Bompont S, de Galan BE, Joshi R, Travert F. Intensive blood glucose control and vascular outcomes in patients with type 2 diabetes. *N Engl J Med* 2008; **358**: 2560-2572 [PMID: 18539916 DOI: 10.1056/NEJMoa0802987]
- 92 Intensive blood-glucose control with sulphonylureas or insulin compared with conventional treatment and risk of complications in patients with type 2 diabetes (UKPDS 33). UK Prospective Diabetes Study (UKPDS) Group. *Lancet* 1998; **352**: 837-853 [PMID: 9742976 DOI: 10.1016/s0140-6736(98)07019-6]
- 93 **Chalmers J**, Cooper ME. UKPDS and the legacy effect. *N Engl J Med* 2008; **359**: 1618-1620 [PMID: 18843126 DOI: 10.1056/NEJMe0807625]
- 94 **Pournaras DJ**, Aasheim ET, Søvik TT, Andrews R, Mahon D, Welbourn R, Olbers T, le Roux CW. Effect of the definition of type II diabetes remission in the evaluation of bariatric surgery for metabolic disorders. *Br J Surg* 2012; **99**: 100-103 [PMID: 22021090 DOI: 10.1002/bjs.7704]
- 95 **Schauer PR**, Burguera B, Ikramuddin S, Cottam D, Gourash W, Hamad G, Eid GM, Mattar S, Ramanathan R, Barinas-Mitchel E, Rao RH, Kuller L, Kelley D. Effect of laparoscopic Roux-en Y gastric bypass on type 2 diabetes mellitus. *Ann Surg* 2003; **238**: 467-484; discussion 84-85 [PMID: 14530719 DOI: 10.1097/01.sla.0000089851.41115.1b]
- 96 **Hall TC**, Pellen MG, Sedman PC, Jain PK. Preoperative factors predicting remission of type 2 diabetes mellitus after Roux-en-Y gastric bypass surgery for obesity. *Obes Surg* 2010; **20**: 1245-1250 [PMID: 20524158 DOI: 10.1007/s11695-010-0198-8]
- 97 **Chen SB**, Lee YC, Ser KH, Chen JC, Chen SC, Hsieh HF, Lee WJ. Serum C-reactive protein and white blood cell count in morbidly obese surgical patients. *Obes Surg* 2009; **19**: 461-466 [PMID: 18651197 DOI: 10.1007/s11695-008-9619-3]
- 98 **Lee WJ**, Hur KY, Lakadawala M, Kasama K, Wong SK, Chen

- SC, Lee YC, Ser KH. Predicting success of metabolic surgery: age, body mass index, C-peptide, and duration score. *Surg Obes Relat Dis* 2013; **9**: 379-384 [PMID: 22963817 DOI: 10.1016/j.soard.2012.07.015]
- 99 **Geloneze B**, Geloneze SR, Fiori C, Stabe C, Tambascia MA, Chaim EA, Astiarraga BD, Pareja JC. Surgery for nonobese type 2 diabetic patients: an interventional study with duodenal-jejunal exclusion. *Obes Surg* 2009; **19**: 1077-1083 [PMID: 19475464 DOI: 10.1007/s11695-009-9844-4]
- 100 **de Moura EG**, Martins BC, Lopes GS, Orso IR, de Oliveira SL, Galvão Neto MP, Santo MA, Sakai P, Ramos AC, Garrido Júnior AB, Mancini MC, Halpern A, Ceconello I. Metabolic improvements in obese type 2 diabetes subjects implanted for 1 year with an endoscopically deployed duodenal-jejunal bypass liner. *Diabetes Technol Ther* 2012; **14**: 183-189 [PMID: 21932999 DOI: 10.1089/dia.2011.0152]
- 101 **DePaula AL**, Stival AR, DePaula CC, Halpern A, Vencio S. Surgical treatment of type 2 diabetes in patients with BMI below 35: mid-term outcomes of the laparoscopic ileal interposition associated with a sleeve gastrectomy in 202 consecutive cases. *J Gastrointest Surg* 2012; **16**: 967-976 [PMID: 22350720 DOI: 10.1007/s11605-011-1807-0]
- 102 **DePaula AL**, Macedo AL, Rassi N, Machado CA, Schraibman V, Silva LQ, Halpern A. Laparoscopic treatment of type 2 diabetes mellitus for patients with a body mass index less than 35. *Surg Endosc* 2008; **22**: 706-716 [PMID: 17704886 DOI: 10.1007/s00464-007-9472-9]
- 103 **Kahn SE**. Beta cell failure: causes and consequences. *Int J Clin Pract Suppl* 2001; (**123**): 13-18 [PMID: 11594291]
- 104 **Rubino F**, Shukla A, Pomp A, Moreira M, Ahn SM, Dakin G. Bariatric, metabolic, and diabetes surgery: what's in a name? *Ann Surg* 2014; **259**: 117-122 [PMID: 23314274 DOI: 10.1097/SLA.0b013e3182759656]
- 105 **Mingrone G**, Panunzi S, De Gaetano A, Guidone C, Iaconelli A, Leccesi L, Nanni G, Pomp A, Castagneto M, Ghirlanda G, Rubino F. Bariatric surgery versus conventional medical therapy for type 2 diabetes. *N Engl J Med* 2012; **366**: 1577-1585 [PMID: 22449317 DOI: 10.1056/NEJMoa1200111]

P- Reviewer: Gómez-Sáez J, Maleki AR, Romeo C, Sumi S

S- Editor: Gou SX **L- Editor:** A **E- Editor:** Liu XM





Published by **Baishideng Publishing Group Inc**

8226 Regency Drive, Pleasanton, CA 94588, USA

Telephone: +1-925-223-8242

Fax: +1-925-223-8243

E-mail: bpgooffice@wjgnet.com

Help Desk: <http://www.wjgnet.com/esps/helpdesk.aspx>

<http://www.wjgnet.com>



ISSN 1007-9327

