

openheart The influence of aortoseptal angulation on provokable left ventricular outflow tract obstruction in hypertrophic cardiomyopathy

Christopher Howell Critoph,¹ Antonios Pantazis,¹ Maria Teresa Tome Esteban,¹ Joel Salazar-Mendiguchía,² Efstathios D Pagourelis,¹ James C Moon,¹ Perry Mark Elliott¹

To cite: Critoph CH, Pantazis A, Tome Esteban MT, *et al.* The influence of aortoseptal angulation on provokable left ventricular outflow tract obstruction in hypertrophic cardiomyopathy. *Open Heart* 2014;**1**:e000176. doi:10.1136/openhrt-2014-000176

Received 25 July 2014
Revised 27 August 2014
Accepted 1 October 2014



CrossMark

¹Department of Inherited Cardiovascular Disease, The Heart Hospital, University College London, London, UK
²Cardiomyopathies, Advanced Heart Failure and Transplant Unit, Hospital Universitari de Bellvitge, Barcelona, Spain

Correspondence to
Dr Christopher Critoph;
chriscritoph@doctors.org.uk

ABSTRACT

Objectives: Aortoseptal angulation (AoSA) can predict provokable left ventricular outflow tract obstruction (LVOTO) in patients with symptomatic hypertrophic cardiomyopathy (HCM). Lack of a standardised measurement technique in HCM without the need for complex three-dimensional (3D) imaging limits its usefulness in routine clinical practice. This study aimed to validate a simple measurement of AoSA using 2D echocardiography and cardiac MR (CMR) imaging as a predictor of LVOTO.

Methods: We retrospectively assessed 160 patients with non-obstructive HCM, referred for exercise stress echocardiography. AoSA was measured using resting 2D echocardiography in all patients, and CMR in 29. Twenty-five controls with normal echocardiograms were used for comparison.

Results: Patients with HCM had a reduced AoSA compared with controls ($113^\circ \pm 12$ vs $126^\circ \pm 6$, $p < 0.0001$). Sixty (38%) patients had provokable LVOTO, with smaller angles than non-obstructive patients ($108^\circ \pm 12$ vs $116^\circ \pm 12$, $p < 0.0001$). AoSA, degree of mitral valvular regurgitation and incomplete systolic anterior motion (SAM) were associated with peak left ventricular outflow tract gradient ($r = 0.508$, $p < 0.0001$). An angle $\leq 100^\circ$ had 27% sensitivity, 91% specificity and 59% positive predictive value for predicting provokable LVOTO. When combined with SAM, specificity was 99% and positive predictive value 88%. Intraclass correlation coefficient of AoSA measured by two observers was 0.901 ($p < 0.0001$). Bland-Altman analysis of echocardiographic AoSA showed good agreement with the CMR-derived angle.

Conclusions: Measurement of AoSA using echocardiography in HCM is easy, reproducible and comparable to CMR. Patients with provokable LVOTO have reduced angles compared with non-obstructive patients. AoSA is highly specific for provokable LVOTO and should prompt further evaluation in symptomatic patients without resting obstruction.

INTRODUCTION

Hypertrophic cardiomyopathy (HCM) is the commonest inherited cardiac disease with a

KEY MESSAGES

What is already known about this subject?

▶ Transthoracic echocardiography can be used to measure aortoseptal angulation. However, data using this technique in patients with hypertrophic cardiomyopathy and its associated geometric abnormalities are lacking. It has been suggested, using three-dimensional (3D) imaging techniques, that aortoseptal angulation is an important determinant of left ventricular outflow tract obstruction.

What does this study add?

▶ This study modified the echocardiographic technique, and validates a standardised method of aortoseptal angulation measurement that can be used in patients with hypertrophic cardiomyopathy without recourse to complex 3D imaging. It also demonstrated that a reduced aortoseptal angle is highly specific for provokable left ventricular outflow tract obstruction and should prompt further evaluation in symptomatic patients without resting gradients.

How might this impact on clinical practice?

▶ We have demonstrated that our methodology for aortoseptal angle quantification using standard 2D transthoracic echocardiography provides a simple, quick, relatively inexpensive, robust method, which provides additional information that may be of clinical benefit to patients with hypertrophic cardiomyopathy. We propose that reduced aortoseptal angle be considered to serve as a 'red flag' for the presence of provokable left ventricular outflow tract obstruction and prompt further specialist stress imaging.

population prevalence of 1 in 500.¹ Left ventricular outflow tract obstruction (LVOTO) caused by systolic anterior motion (SAM) of the mitral valve leaflets is present in one-third of patients at rest,² and occurs in up to two-thirds of symptomatic patients

without resting obstruction during manoeuvres that reduce preload and afterload or increase contractility.³ The mechanism of SAM varies between patients, but in most individuals it represents a complex interaction between altered left ventricular (LV) chamber shape, mitral leaflet length and orientation of the mitral and submitral apparatus.^{4–6} Recently, it has been suggested that aortoseptal angulation is an important determinant of LVOTO that can be used as a predictor of provokable obstruction in symptomatic patients without resting left ventricular outflow tract (LVOT) gradients.⁷ However, the lack of a standardised method of measurement that can be used in patients with HCM without recourse to complex three-dimensional (3D) imaging techniques limits the usefulness of this parameter in routine clinical practice. Transthoracic echocardiography is widely available, and can be used to measure aortoseptal angulation. However, data using this technique in patients with HCM and its associated geometric abnormalities are lacking. The aims of this study were to validate a simple measurement of aortoseptal angulation using 2D echocardiography and cardiac MR (CMR) imaging and to determine its relation to provokable LVOTO in patients with HCM.

METHODS

Patient cohort

This was a retrospective cohort study. The study population comprised consecutive patients with non-obstructive HCM referred for exercise stress echocardiography between August 2004 and December 2008. All patients fulfilled conventional diagnostic criteria for HCM and had symptoms or signs consistent with provokable obstruction. None of the patients had received interventional gradient reduction therapy (myectomy or alcohol ablation). Contemporaneous peak oxygen consumption measured during symptom limited upright bicycle ergometer exercise testing, functional class and medication were recorded in all patients. The control group consisted of 25 age-matched and sex-matched individuals referred for transthoracic echocardiography to investigate symptoms of chest pain or breathlessness, who were subsequently found to have normal studies, with no history of hypertension, myocardial or valvular heart disease.

Transthoracic echocardiography

Resting transthoracic echocardiography was performed using vivid i7 (General Electric Vingmed Ultrasound, Horten, Norway) and Philips Sonos 7500 (Philips Medical Systems, Andover, Massachusetts, USA) platforms using standard acquisition protocols. Exercise echocardiography was performed using the same equipment during symptom-limited exercise on an upright bicycle ergometer using a ramp protocol. Echocardiographic parameters were measured according to European Society of Echocardiography

guidelines,^{8–10} using EchoPAC (General Electric) software. Basal interventricular septal thickness was measured in the parasternal short-axis view. SAM was defined as incomplete if there was any movement of the mitral valve leaflets or chordae towards the ventricular septal endocardium without septal contact and complete when there was contact with the ventricular septum during systole. Mitral regurgitation was graded visually as none, mild, moderate or severe at rest and during provocation.⁹ Maximal LVOT gradient was measured using continuous wave Doppler in the apical five-chamber view at rest, during and immediately after exercise. Care was taken to exclude Doppler signals from mitral regurgitation and mid-cavity obstruction. Resting LVOTO was defined as a peak LVOT gradient ≥ 30 mm Hg, and provokable LVOTO was defined as a gradient ≥ 50 mm Hg during or immediately following exercise. The smallest LVOT diameter below the aortic valve annulus during ventricular systole was measured in the parasternal long-axis view.

Measurement of aortoseptal angle

A parasternal long-axis view taken at the R wave of the surface ECG was used for analysis. The image was analysed offline using a DICOM image viewer (SOBOX V.2.3.0.1). The aortoseptal angle was measured using a modification of the technique originally described by Fowles *et al*,¹¹ and defined as the angle between a line drawn along the border of the right and left interventricular septum (parallel to the proximal right ventricular endocardial border), and a line drawn through the long axis of the aortic root (figure 1), where a value of 180° would be a straight line from septum to aorta and reducing values represent increasing angulation.

Two cardiologists trained in echocardiography and cardiomyopathy independently evaluated all images. In 29 patients, contemporaneous CMR images were available, and 3D data sets were loaded onto a standard offline work station (Leonardo, Siemens Medical Solutions) for analysis of the LV-aortic root angle. This angle was measured in a multiplanar reformatted LVOT view (intended to replicate the echocardiographic images) using the same reference lines as for echocardiography.

Statistics

Normally distributed variables are presented as mean \pm SD, and non-normally distributed data as median and IQR. Analysis was carried out using SPSS statistical software V.19 (SPSS for Windows, IBM, USA). For all tests a p value < 0.05 was considered significant. The mean value of the angle measured by two observers was used as an independent variable and assessed alongside the above additional echocardiographic parameters using a linear regression model to determine the univariate associations of the peak provokable LVOT gradient. Significant factors were then entered into a stepwise elimination model to determine multivariate predictors.

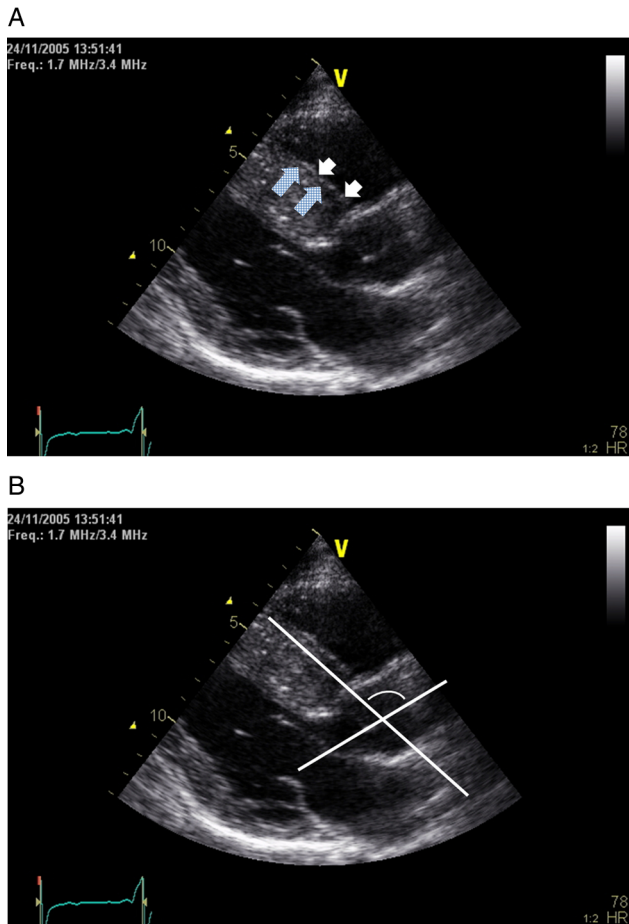


Figure 1 Transthoracic echocardiogram, parasternal long-axis view: example of construction of reference lines for aortoseptal angle calculation. (A) The septal line was drawn along the junction of left and right interventricular septum (checked arrows), parallel to the proximal right endocardial border (white arrows). (B) The aortoseptal angle was defined as the angle between the septal line, and a line drawn through the long axis of the aortic root where a value of 180° would be a straight line from septum to aorta and reducing values represent increasing angulation.

A similar model was used to determine the associations of the aortoseptal angle. Binary logistic regression and receiver operator characteristic curve analysis was used to determine the sensitivity and specificity of the aortoseptal angle alone or in combination with resting incomplete SAM to detect the presence of provokable LVOTO. Differences between two groups were assessed using independent two-sample t test. One way Analysis of variance (ANOVA) with homogeneity of variance testing, and post-hoc Bonferroni or Games-Howell corrections were used as appropriate to assess differences between multiple groups. Interobserver variability was assessed using a two-way mixed model intraclass correlation coefficient (absolute type) and Pearson's correlation. Agreement between echocardiography and CMR measured angles was assessed using Pearson's correlation coefficient and Bland-Altman analysis.

RESULTS

Patient characteristics

The initial study cohort comprised 179 patients. On the day of exercise, 19 individuals were found to have a LVOT gradient ≥ 30 mm Hg at rest and were excluded from the analysis. The final study cohort therefore consisted of 160 patients (105 males, age 48 ± 14 years). Descriptive demographic and echocardiographic characteristics are shown in [table 1](#). Twelve (8%) patients were unable to perform exercise and underwent measurement of the LVOT gradient following the administration of sublingual glyceryl trinitrate in combination with Valsalva manoeuvre. Fifty-nine (37%) patients were taking a β -blocker or calcium channel antagonist as they were unable to discontinue before the test for symptomatic reasons; a further 40 (25%) patients withheld these drugs for a minimum of 48 h prior to study. There was no difference in aortoseptal angle between those who were either not on or withheld medication and those who took it on the day of exercise ($113^\circ \pm 12$ vs $114^\circ \pm 12$, $p=0.709$). In patients who were unable to discontinue medication for symptomatic reasons, there was a trend towards being more likely to develop provokable obstruction ($p=0.07$). Twelve (20%) patients with and 10 (10%) without provokable LVOTO were in New York Heart Association (NYHA) class III ($p=0.097$). There was no difference in provokable LVOTO or aortoseptal angle ($108^\circ \pm 12$ vs $114^\circ \pm 12$, $p=0.12$) in those with or without hypertension, although prevalence was low.

Aortoseptal angle

Patients with HCM had a smaller aortoseptal angle than controls ($113^\circ \pm 12$ vs $126^\circ \pm 6$, $p<0.0001$). There was no difference in aortoseptal angle between men and women ($112^\circ \pm 13$ vs $114^\circ \pm 11$, $p=0.297$). There was a weak negative correlation between aortoseptal angle and age ($r=-0.242$, $p=0.002$) and also height ($r=-0.181$, $p=0.036$). There was no relationship between aortoseptal angle and body weight. There was no correlation between aortoseptal angle and basal septal thickness or LVOT systolic diameter.

Relationship between echocardiographic variables and provokable LVOTO

Univariate analysis of echocardiographic variables and their relationship to peak provokable LVOT gradient is shown in [table 2](#). Aortoseptal angle ($\beta -1.18$; CI -1.68 to -0.68 ; $p<0.0001$), incomplete SAM at rest ($\beta 30.59$; CI 18.15 to 43.04 ; $p<0.0001$) and degree of resting mitral regurgitation ($\beta 20.61$; CI 2.64 to 38.59 ; $p=0.025$), overall $r=0.508$, $p<0.0001$, were independently associated with peak provokable LVOT gradient on multivariate analysis. There was no difference in left ventricular end-diastolic dimensions between patients with and without provokable LVOTO.

The aortoseptal angle was smaller in patients with provokable LVOTO ($108^\circ \pm 12$ vs $116^\circ \pm 12$, $p<0.0001$), [figure 2](#).

Table 1 Patient demographics, clinical and echocardiographic characteristics

Demographics and baseline data		
Age (years)	50 (19), range 16–82	
Male gender	105 (66%)	
Height (cm)	173 (14)	
Weight (kg)	82±16	
Peak oxygen consumption (mL/kg/min)	19.0 (11.4)	
Per cent predicted peak oxygen consumption	67 (32)	
Hypertension	14 (9%)	
Medication		
Calcium antagonist or β-blocker on day of test	59 (37%)	
Calcium antagonist or β-blocker withheld >48 h pretest	40 (25%)	
NYHA functional class		
2	138 (86%)	
3	22 (14%)	
Echocardiographic parameters		
Basal septal thickness (mm)	16±4	
LVOT systolic diameter (mm)	19±3	
Aortoseptal angle (degrees)	113±12 (range 79–140)	
Left ventricular end diastolic diameter (mm)	46±6	
Distribution of hypertrophy		
Asymmetric	146 (91%)	
Concentric	10 (6%)	
Apical	4 (3%)	
	Rest	Provocation
LVOT gradient (mm Hg)		
Whole cohort	7 (6)	28 (69)
<30	160 (100%)	81 (51%)
30–49	–	19 (12%)
50–69	–	12 (8%)
≥70	–	48 (29%)
SAM		
None	82 (51%)	62 (39%)
Incomplete	78 (49%)	39 (24%)
Complete	0	59 (37%)
Mitral regurgitation		
None	19 (12%)	17 (11%)
Mild	139 (87%)	120 (75%)
Moderate	2 (1%)	20 (13%)
Severe	0	3 (2%)

Normally distributed data mean±SD, non-parametric data median (IQR).

LVOT, left ventricular outflow tract; NYHA, New York Heart Association; SAM, systolic anterior motion.

When grouped by LVOT gradient, a smaller aortoseptal angle was found in patients with increasingly severe LVOTO, $p=0.004$, [figure 3](#).

The area under receiver operator curves for aortoseptal angle, incomplete rest SAM, and the two parameters combined for the prediction of provokable LVOTO were

Table 2 Univariate predictors of peak provokable LVOT gradient

Factor	r	β	CI		p Value
			Lower	Upper	
Aortoseptal angle	0.319	–1.165	–1.708	–0.622	<0.0001
Basal septal thickness	0.048	–0.613	–2.618	1.392	0.547
Incomplete SAM (rest)	0.366	33.06	19.861	46.259	<0.0001
Mitral regurgitation grade (rest)	0.197	25.604	5.535	45.677	0.013
LVOT systolic diameter	0.014	–0.24	–2.949	2.469	0.861

LVOT, left ventricular outflow tract; SAM, systolic anterior motion.

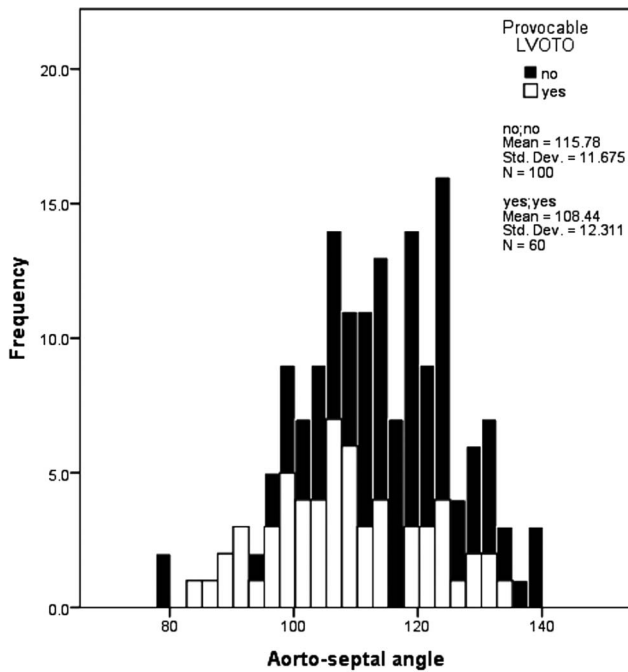


Figure 2 Histogram showing variation in aortoseptal angle between patients with hypertrophic cardiomyopathy with and without provokable left ventricular outflow tract obstruction (LVOTO).

0.68 (95% CI 0.59 to 0.76, $p < 0.0001$), 0.67 (95% CI 0.58 to 0.76, $p < 0.0001$ and 0.76 (95% CI 0.68 to 0.83, $p < 0.0001$), respectively (figure 4). Sensitivity, specificity and positive predictive value for SAM and aortoseptal angulation are shown in table 3.

Reproducibility

All images were deemed usable for the purpose of angle measurement by both observers. The intraclass correlation coefficient of the aortoseptal angles measured by the two

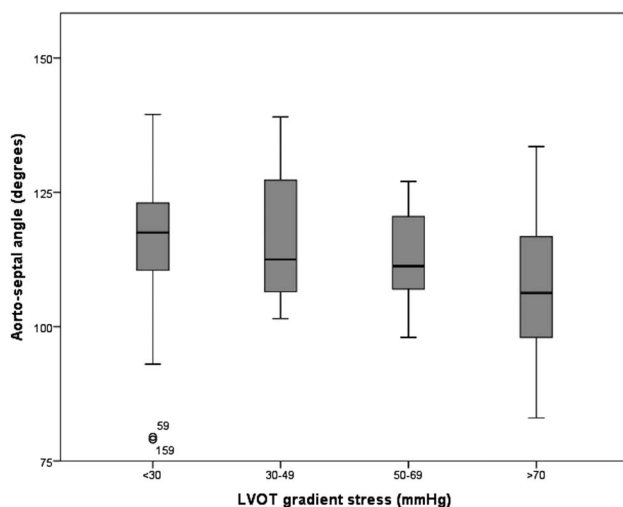


Figure 3 Box plot showing decreasing aortoseptal angle with increasing severity of provokable left ventricular outflow tract (LVOT) gradient.

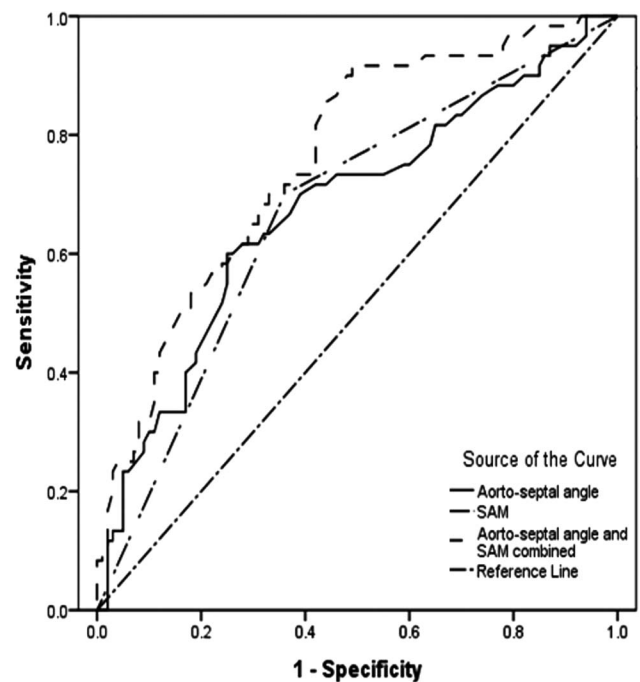


Figure 4 Receiver operator characteristic curves showing the probability that aortoseptal angle, presence of systolic anterior motion (SAM) of the mitral valve and both combined predict patients who develop provokable left ventricular outflow tract obstruction during exercise.

observers was 0.90 (95% CI 0.87 to 0.93, $p < 0.0001$), with Pearson's coefficient $r = 0.82$, $p < 0.0001$. Correlation between the aortoseptal angle measured using echocardiography and CMR was $r = 0.50$, $p = 0.006$. The mean difference between the echocardiography angle–CMR angle was -6° (SD 11). A Bland-Altman plot of the differences in angle measured using the two modalities plotted against their mean is shown in figure 5.

DISCUSSION

The main findings of this study are that patients with HCM have a smaller aortoseptal angle than controls, and individuals who develop provokable LVOTO during exercise have a smaller angle than those without obstruction. The angle can be easily and reliably measured using standard 2D transthoracic echocardiography in patients with HCM, and is more specific than the presence of SAM for the identification of provokable LVOTO.

Determinants of provokable LVOTO and aortoseptal angulation

A variety of structural features are associated with LVOTO including anterior displacement of papillary muscles,¹² reduced LVOT area¹³ and primary mitral valve abnormalities,^{14–16} but the essential component in the majority of patients is contact between the mitral valve and the interventricular septum caused by SAM of

Table 3 Sensitivity, specificity and positive predictive value to predict provokable left ventricular outflow tract obstruction in patients with hypertrophic cardiomyopathy using resting echocardiographic parameters

	Sensitivity (%)	Specificity (%)	Positive predictive value (%)
Incomplete SAM rest	70	64	54
Aortoseptal angle $\leq 100^\circ$ N=25 (16%)	27	91	59
Aortoseptal angle $\leq 100^\circ$ and incomplete SAM rest N=8 (5%)	12	99	88
Aortoseptal angle $\leq 110^\circ$ N=37 (23%)	62	71	56
Aortoseptal angle $\leq 110^\circ$ and incomplete SAM rest N=19 (12%)	23	95	74

SAM, systolic anterior motion.

the anterior, and, less commonly, the posterior leaflets. Incomplete SAM at rest has long been recognised as a clue to the presence of provokable LVOTO, but this study demonstrates for the first time that reduced aortoseptal angle has a higher specificity when used as a single measure. The relatively low sensitivity of both parameters is expected given the high prevalence and complexity of LVOTO, which is related to many additional factors.

Variation in LVOT geometry is characteristic of HCM, as well as of aortic valve disease and hypertension in which a 'sigmoid' configuration is common, particularly with advancing age and reduction in LV cavity size.^{17–21} In adults, a smaller aortoseptal angle is associated with increased aortic pressure wave reflection and higher central blood pressure,²² although no causal relationship has been demonstrated to date and in children a smaller aortoseptal angle is a highly sensitive, specific and positive predictive marker for the development of

subaortic stenosis,²³ and can be used as an echocardiographic feature to identify individuals at risk.²⁴

Data on the importance of LVOT diameter in predicting patients with provokable obstruction are conflicting possibly due to differences in methodology.^{3 25 26} Owing to the dynamic nature of provokable LVOTO, measurement of this parameter may often be distal to the point of SAM-septal contact and relatively fixed, and therefore may not accurately reflect 3D LVOT area. The lack of an unequivocal association is not therefore surprising. We measured the LVOT diameter using 2D images in the parasternal long-axis view and found no influence on the presence or magnitude of LVOT gradient.

Technique of aortoseptal angulation measurement

CMR and CT imaging provide a 3D measurement of aortoseptal angulation, which has been shown to predict LVOTO provoked using Valsalva or amyl nitrite independent of basal septal thickness.⁷ A variety of methods have been used for measurement of the aortoseptal angle using 2D transthoracic echocardiography. The most commonly adopted is the angle formed by the long axis of the ascending aorta and the plane of the ventricular septum, which has excellent interobserver correlation.^{11 24 27 28} While 2D echocardiography has been used multiple times to measure aortoseptal angulation, it has not been evaluated in HCM. The left ventricular endocardial border in HCM rarely forms a straight line, particularly in patients with a basal septal bulge. We recognised the difficulties of finding consistent echocardiographic landmarks from which to accurately quantify the aortoseptal angle from standard 2D images in HCM, and so attempted to determine reference lines that would be most consistently applicable across echocardiographic studies and between observers. We therefore modified the method originally described by Fowles *et al.*¹¹ Instead of using a line bisecting the septum at the level of the mitral valve leaflets and 2 cm apically, we constructed one at the junction of the left and right interventricular septum, parallel to the proximal right endocardial border. We hypothesised that this

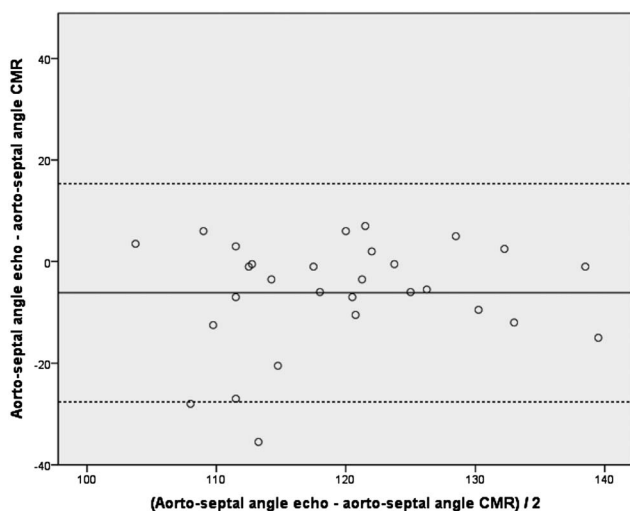


Figure 5 Bland-Altman plot of the differences between aortoseptal angulation measured using transthoracic echocardiography and cardiac MR (CMR) imaging. Solid line represents mean, dashed line represents mean ± 2 SDs.

technique would be a more accurate representation of the true septal orientation in HCM and more likely to fit a straight line. We believe the major determinant of the angle in HCM to be abnormal septal orientation, with less variability seen in the position of the aorta. The quality of echocardiographic images varies between individuals, and in a minority of patients fit to a straight line can be challenging. However, the results of our interobserver analysis support the reliability of our method across a large number of studies, and comparison with CMR data shows good agreement.

Clinical relevance and applicability

Patients with refractory symptoms and resting LVOTO should be considered for myectomy,^{29 30} or alcohol septal ablation.^{31–33} Provocable LVOTO is associated with functional impairment and heart failure symptoms,^{34–36} and there is good evidence that invasive treatments should be offered to these patients.^{37 38} Therefore a simple clinical tool that helps identify patients at risk of developing provocable LVOTO would be of benefit.

We propose that reduced aortoseptal angle be considered to serve as a ‘red flag’ for the presence of provocable LVOTO. If suspected, it can be quickly and easily quantified, and even in the absence of resting SAM on 2D echocardiography should prompt further evaluation with stress echocardiography. Availability of expertise for stress echocardiography in patients with HCM is variable, although it can be performed safely,³⁹ and as such the relatively low sensitivity of aortoseptal angle measurement demonstrated here is of less importance. However, the high specificity is likely to identify patients who may then benefit from treatment. As used here, current guidelines to diagnose provocable LVOTO recommend use of either a treadmill or bicycle in combination with Doppler echocardiography during and/or immediately following exercise, as simple manoeuvres such as Valsalva may underestimate the gradient.³⁰

We have demonstrated that our methodology for aortoseptal angle quantification using standard 2D transthoracic echocardiography provides a simple, quick, relatively inexpensive, robust method that is comparable to MR and provides additional information that may be of clinical benefit to patients with HCM. Furthermore, the results may be equally relevant in other patients with reduced aortoseptal angle, for example, those with hypertension, and the elderly. Further study in these groups is warranted.

LIMITATIONS

This is a retrospective observational study on a consecutive cohort of patients selected for stress echocardiography from a specialist cardiomyopathy clinic. We did not assess specific abnormalities of the mitral valve, anterior displacement of the papillary muscles or LVOT area. Only symptomatic patients were referred for stress

echocardiography, and so the relevance of aortoseptal angulation in asymptomatic patients is unknown. One-third of patients were unable to discontinue medication for symptomatic reasons; this reflects real-world practice, but may have underestimated the prevalence and magnitude of LVOTO.

Basal septal thickness was relatively modest in our cohort. However, increase in this measurement is associated with a reduction in aortoseptal angle.⁷ Inclusion of patients with more prominent basal septal hypertrophy may therefore be expected to increase sensitivity and specificity of aortoseptal angulation for the diagnosis of provocable LVOTO.

CONCLUSION

Measurement of aortoseptal angulation using transthoracic echocardiography in patients with HCM is easy, reproducible, comparable to MRI, and can be calculated using standard echocardiographic software. Patients with HCM have smaller aortoseptal angles than those found in controls, where they are associated with higher peak LVOT gradient. A reduced aortoseptal angle is highly specific for provocable LVOTO and should prompt further evaluation in symptomatic patients without resting obstruction.

Correction notice The license of this article has changed since publication to CC BY 4.0.

Contributors All authors contributed significantly to the work. CHC, AP, MTTE and PME devised and conducted the research and wrote the manuscript. JS and EDP assisted with data acquisition and analysis. JM assisted with data analysis and manuscript preparation. CHC and PME take overall responsibility for the manuscript.

Funding CHC is funded by a clinical research training fellowship from the British Heart Foundation, London, UK (grant reference FS/10/66/28489). JS-M is funded by a grant from the Spanish Cardiology Society.

This work was undertaken at UCLH/UCL that received a proportion of funding from the UK Department of Health's NIHR Biomedical Research Centre's funding scheme.

Competing interests None.

Ethics approval

Provenance and peer review Not commissioned; externally peer reviewed.

Data sharing statement No additional data are available.

Open Access This is an Open Access article distributed in accordance with the terms of the Creative Commons Attribution (CC BY 4.0) license, which permits others to distribute, remix, adapt and build upon this work, for commercial use, provided the original work is properly cited. See: <http://creativecommons.org/licenses/by/4.0/>

REFERENCES

1. Maron BJ, Gardin JM, Flack JM. Prevalence of hypertrophic cardiomyopathy in a general population of young adults. Echocardiographic analysis of 4111 subjects in the CARDIA Study. Coronary Artery Risk Development in (Young) Adults. *Circulation* 1995;92:785–9.
2. Maron MS, Olivetto I, Zenovich AG, *et al*. Hypertrophic cardiomyopathy is predominantly a disease of left ventricular outflow tract obstruction. *Circulation* 2006;114:2232–9.
3. Shah JS, Esteban MT, Thaman R, *et al*. Prevalence of exercise-induced left ventricular outflow tract obstruction in

- symptomatic patients with non-obstructive hypertrophic cardiomyopathy. *Heart* 2008;94:1288–94.
4. Maron BJ, Gottdiener JS, Roberts WC, *et al.* Left ventricular outflow tract obstruction due to systolic anterior motion of the anterior mitral leaflet in patients with concentric left ventricular hypertrophy. *Circulation* 1978;57:527–33.
 5. Maron BJ, Harding AM, Spirito P, *et al.* Systolic anterior motion of the posterior mitral leaflet: a previously unrecognized cause of dynamic subaortic obstruction in patients with hypertrophic cardiomyopathy. *Circulation* 1983;68:282–93.
 6. Shah PM, Gramiak R, Kramer DH. Ultrasound localization of left ventricular outflow obstruction in hypertrophic obstructive cardiomyopathy. *Circulation* 1969;40:3–11.
 7. Kwon DH, Smedira NG, Popovic ZB, *et al.* Steep left ventricle to aortic root angle and hypertrophic obstructive cardiomyopathy: study of a novel association using three-dimensional multimodality imaging. *Heart* 2009;95:1784–91.
 8. Lang RM, Bierig M, Devereux RB, *et al.* Recommendations for chamber quantification. *Eur J Echocardiogr* 2006;7:79–108.
 9. Lancellotti P, Moura L, Pierard LA, *et al.* European Association of Echocardiography recommendations for the assessment of valvular regurgitation. Part 2: mitral and tricuspid regurgitation (native valve disease). *Eur J Echocardiogr* 2010;11:307–32.
 10. Lancellotti P, Tribouilloy C, Hagendorff A, *et al.* European Association of Echocardiography recommendations for the assessment of valvular regurgitation. Part 1: aortic and pulmonary regurgitation (native valve disease). *Eur J Echocardiogr* 2010;11:223–44.
 11. Fowles RE, Martin RP, Popp RL. Apparent asymmetric septal hypertrophy due to angled interventricular septum. *Am J Cardiol* 1980;46:386–92.
 12. Kim DH, Handschumacher MD, Levine RA, *et al.* In vivo measurement of mitral leaflet surface area and subvalvular geometry in patients with asymmetrical septal hypertrophy: insights into the mechanism of outflow tract obstruction. *Circulation* 2010;122:1298–307.
 13. Qin JX, Shiota T, Lever HM, *et al.* Impact of left ventricular outflow tract area on systolic outflow velocity in hypertrophic cardiomyopathy: a real-time three-dimensional echocardiographic study. *J Am Coll Cardiol* 2002;39:308–14.
 14. Klues HG, Maron BJ, Dollar AL, *et al.* Diversity of structural mitral valve alterations in hypertrophic cardiomyopathy. *Circulation* 1992;85:1651–60.
 15. Perez De Isla L, Zamorano J, *et al.* Morphological determinants of subaortic stenosis in hypertrophic cardiomyopathy: insights from real-time 3-dimensional echocardiography. *J Am Soc Echocardiogr* 2005;18:802–4.
 16. Song JM, Fukuda S, Lever HM, *et al.* Asymmetry of systolic anterior motion of the mitral valve in patients with hypertrophic obstructive cardiomyopathy: a real-time three-dimensional echocardiographic study. *J Am Soc Echocardiogr* 2006;19:1129–35.
 17. Goor D, Lillehei CW, Edwards JE. The "sigmoid septum". Variation in the contour of the left ventricular out. *Am J Roentgenol Radium Ther Nucl Med* 1969;107:366–76.
 18. Belenkie I, MacDonald RP, Smith ER. Localized septal hypertrophy: part of the spectrum of hypertrophic cardiomyopathy or an incidental echocardiographic finding? *Am Heart J* 1988;115:385–90.
 19. Shapiro LM, Howat AP, Crean PA, *et al.* An echocardiographic study of localized subaortic hypertrophy. *Eur Heart J* 1986;7:127–32.
 20. Kitzman DW, Scholz DG, Hagen PT, *et al.* Age-related changes in normal human hearts during the first 10 decades of life. Part II (Maturity): a quantitative anatomic study of 765 specimens from subjects 20 to 99 years old. *Mayo Clin Proc* 1988;63:137–46.
 21. Ieki K, Imataka K, Sakurai S, *et al.* [Differentiation of hypertrophic cardiomyopathy and hypertensive cardiac hypertrophy using the patterns of interventricular septum hypertrophy]. *J Cardiol* 1996;27:309–14.
 22. Muiesan G, Sorbini CA, Solinas E, *et al.* Comparison of CO₂-rebreathing and direct Fick methods for determining cardiac output. *J Appl Physiol* 1968;24:424–9.
 23. Yakimets J, Jensen L. Evaluation of impedance cardiography: comparison of NCCOM3-R7 with Fick and thermodilution methods. *Heart Lung* 1995;24:194–206.
 24. Kleinert S, Geva T. Echocardiographic morphometry and geometry of the left ventricular outflow tract in fixed subaortic stenosis. *J Am Coll Cardiol* 1993;22:1501–8.
 25. Nakatani S, Marwick TH, Lever HM, *et al.* Resting echocardiographic features of latent left ventricular outflow obstruction in hypertrophic cardiomyopathy. *Am J Cardiol* 1996;78:662–7.
 26. Dimitrow PP, Bober M, Michalowska J, *et al.* Left ventricular outflow tract gradient provoked by upright position or exercise in treated patients with hypertrophic cardiomyopathy without obstruction at rest. *Echocardiography* 2009;26:513–20.
 27. Barkhordarian R, Wen-Hong D, Li W, *et al.* Geometry of the left ventricular outflow tract in fixed subaortic stenosis and intact ventricular septum: an echocardiographic study in children and adults. *J Thorac Cardiovasc Surg* 2007;133:196–203.
 28. Sigfusson G, Tacy TA, Vanauker MD, *et al.* Abnormalities of the left ventricular outflow tract associated with discrete subaortic stenosis in children: an echocardiographic study. *J Am Coll Cardiol* 1997;30:255–9.
 29. Ommen SR, Maron BJ, Olivetto I, *et al.* Long-term effects of surgical septal myectomy on survival in patients with obstructive hypertrophic cardiomyopathy. *J Am Coll Cardiol* 2005;46:470–6.
 30. Parameshwar J, Keegan J, Sparrow J, *et al.* Predictors of prognosis in severe chronic heart failure. *Am Heart J* 1992;123:421–6.
 31. Sigwart U. Non-surgical myocardial reduction for hypertrophic obstructive cardiomyopathy. *Lancet* 1995;346:211–14.
 32. Alam M, Dokainish H, Lakkis N. Alcohol septal ablation for hypertrophic obstructive cardiomyopathy: a systematic review of published studies. *J Interv Cardiol* 2006;19:319–27.
 33. Alam M, Dokainish H, Lakkis NM. Hypertrophic obstructive cardiomyopathy-alcohol septal ablation vs. myectomy: a meta-analysis. *Eur Heart J* 2009;30:1080–7.
 34. Nistri S, Olivetto I, Maron MS, *et al.* Timing and significance of exercise-induced left ventricular outflow tract pressure gradients in hypertrophic cardiomyopathy. *Am J Cardiol* 2010;106:1301–6.
 35. Vaglio JC Jr, Ommen SR, Nishimura RA, *et al.* Clinical characteristics and outcomes of patients with hypertrophic cardiomyopathy with latent obstruction. *Am Heart J* 2008;156:342–7.
 36. Maron MS, Olivetto I, Betocchi S, *et al.* Effect of left ventricular outflow tract obstruction on clinical outcome in hypertrophic cardiomyopathy. *N Engl J Med* 2003;348:295–303.
 37. Schaff HV, Dearani JA, Ommen SR, *et al.* Expanding the indications for septal myectomy in patients with hypertrophic cardiomyopathy: results of operation in patients with latent obstruction. *J Thorac Cardiovasc Surg* 2012;143:303–9.
 38. Gietzen FH, Leuner CJ, Obergassel L, *et al.* Role of transcatheter ablation of septal hypertrophy in patients with hypertrophic cardiomyopathy, New York Heart Association functional class III or IV, and outflow obstruction only under provokable conditions. *Circulation* 2002;106:454–9.
 39. Firoozi S, Sharma S, McKenna WJ. The role of exercise testing in the evaluation of the patient with hypertrophic cardiomyopathy. *Curr Cardiol Rep* 2001;3:152–9.