

References

- Montani D, Günther S, Dorfmüller P, Perros F, Girerd B, Garcia G, Jaïs X, Savale L, Artaud-Macari E, Price LC, *et al.* Pulmonary arterial hypertension. *Orphanet J Rare Dis* 2013;8:97.
- Farber HW, Miller DP, Meltzer LA, McGoon MD. Treatment of patients with pulmonary arterial hypertension at the time of death or deterioration to functional class IV: insights from the REVEAL Registry. *J Heart Lung Transplant* 2013;32:1114–1122.
- Bogaard HJ, Abe K, Vonk Noordegraaf A, Voelkel NF. The right ventricle under pressure: cellular and molecular mechanisms of right-heart failure in pulmonary hypertension. *Chest* 2009;135:794–804.
- Voelkel NF, Gomez-Arroyo J, Abbate A, Bogaard HJ. Mechanisms of right heart failure—a work in progress and a plea for failure prevention. *Pulm Circ* 2013;3:137–143.
- So PP, Davies RA, Chandy G, Stewart D, Beanlands RS, Haddad H, Pugliese C, Mielniczuk LM. Usefulness of β -blocker therapy and outcomes in patients with pulmonary arterial hypertension. *Am J Cardiol* 2012;109:1504–1509.
- Bogaard HJ, Natarajan R, Mizuno S, Abbate A, Chang PJ, Chau VQ, Hoke NN, Kraskauskas D, Kasper M, Salloum FN, *et al.* Adrenergic receptor blockade reverses right heart remodeling and dysfunction in pulmonary hypertensive rats. *Am J Respir Crit Care Med* 2010;182:652–660.
- Drake JI, Gomez-Arroyo J, Dumur CI, Kraskauskas D, Natarajan R, Bogaard HJ, Fawcett P, Voelkel NF. Chronic carvedilol treatment partially reverses the right ventricular failure transcriptional profile in experimental pulmonary hypertension. *Physiol Genom* 2013;45:449–461.
- Quaife RA, Christian PE, Gilbert EM, Datz FL, Volkman K, Bristow MR. Effects of carvedilol on right ventricular function in chronic heart failure. *Am J Cardiol* 1998;81:247–250.
- Davis ME, Richards AM, Nicholls MG, Yandle TG, Frampton CM, Troughton RW. Introduction of metoprolol increases plasma B-type natriuretic peptides in mild, stable heart failure. *Circulation* 2006;113:977–985.
- Horikawa YT, Panneerselvam M, Kawaraguchi Y, Tsutsumi YM, Ali SS, Balijepalli RC, Murray F, Head BP, Niesman IR, Rieg T, *et al.* Cardiac-specific overexpression of caveolin-3 attenuates cardiac hypertrophy and increases natriuretic peptide expression and signaling. *J Am Coll Cardiol* 2011;57:2273–2283.
- van de Veerdonk MC, Kind T, Marcus JT, Mauritz GJ, Heymans MW, Bogaard HJ, Boonstra A, Marques KM, Westerhof N, Vonk Noordegraaf A. Progressive right ventricular dysfunction in patients with pulmonary arterial hypertension responding to therapy. *J Am Coll Cardiol* 2011;58:2511–2519.
- Provencher S, Herve P, Jais X, Lebrec D, Humbert M, Simonneau G, Sitbon O. Deleterious effects of β -blockers on exercise capacity and hemodynamics in patients with portopulmonary hypertension. *Gastroenterology* 2006;130:120–126.
- Peacock A, Ross K. Pulmonary hypertension: a contraindication to the use of β -adrenoceptor blocking agents. *Thorax* 2010;65:454–455.
- Ohta Y, Watanabe K, Nakazawa M, Yamamoto T, Ma M, Fuse K, Ito M, Hirono S, Tanabe T, Hanawa H, *et al.* Carvedilol enhances atrial and brain natriuretic peptide mRNA expression and release in rat heart. *J Cardiovasc Pharmacol* 2000;36:S19–S23.

Copyright © 2014 by the American Thoracic Society

Plasma Complement Levels Are Associated with Primary Graft Dysfunction and Mortality after Lung Transplantation



To the Editor:

Primary graft dysfunction (PGD) is a form of acute lung injury occurring within 72 hours of lung transplantation (1, 2). We have previously demonstrated an increase in early mortality in subjects

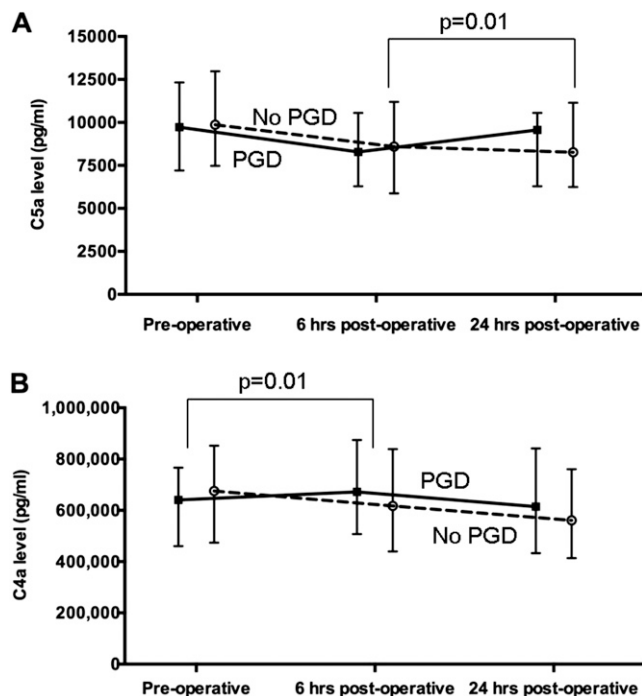


Figure 1. (A) Plasma C5a concentration at each time point in subjects without primary graft dysfunction (PGD) (dashed line) and with grade 3 PGD (solid line). The *P* value indicates that the difference in C5a concentration (represented by the slope of the line) between the 6-hour time point and the 24-hour time point is significantly greater in those with PGD compared with those without. (B) Plasma C4a concentration at each time point in subjects without PGD (dashed line) and with grade 3 PGD (solid line). The *P* value indicates that the difference in C4a concentration between the preoperative time point and the 6-hour time point (represented by the slope of the line) is significantly greater in those with PGD compared with those without.

with PGD (2). Understanding of the mechanisms leading to PGD and early mortality is important in identifying potential therapeutic targets and interventions.

The complement system defines a group of plasma and cell membrane proteins that play a key role in innate immunity as well as regulating adaptive immune response. C3a, C4a, and C5a, downstream products of the activated complement cascade, are potent neutrophil and lymphocyte chemoattractants (3–5). In animal models, activation of the complement system during lung ischemia and reperfusion can lead to cellular injury and lung allograft failure (6, 7).

Funded by National Institutes of Health grants HL096845 (J.D.C. and D.S.W.), HL087115 (J.D.C.), HL081619 (J.D.C.), HL115354 (J.D.C.), HL114626 (J.D.C. and D.J.L.), T32 HL007568 (R.J.S.), and P01AI084853 (D.S.W.).

Author Contributions: Conception and design, R.J.S., A.M.E., J.M.D., S.M.P., L.B.W., J.D.C., and D.S.W. Acquisition of data, R.J.S., A.M.E., P.A.S., D.W.R., J.B.O., E.C., V.N.L., S.M.B., M.C., K.M.W., J.B.O., A.W., D.J.L., D.S.W., L.B.W., and J.D.C. Analysis and interpretation of data, R.J.S., A.M.E., G.J.E., J.M.D., D.S.W., and J.D.C. Drafting or revising the manuscript for important intellectual content, R.J.S., A.M.E., J.M.D., P.A.S., D.W.R., L.B.W., A.W., S.M.P., G.J.E., V.N.L., S.M.B., J.D.C., and D.S.W. Final approval of the version to be published, all authors.

This letter has an online supplement, which is accessible from this issue's table of contents at www.atsjournals.org

Based on the relationship between complement activation and ischemia reperfusion injury in the lung allograft, we hypothesized that plasma levels of C3a, C4a, and C5a would be associated with both PGD and mortality after lung transplantation.

We performed a prospective cohort study of 190 lung transplant recipients from 10 centers enrolled between 2008 and 2010 in the Lung Transplant Outcomes Group (LTOG) cohort. We included consecutive subjects who had plasma samples available at the preoperative, 6-hour, and 24-hour time points (see Figure E1 in the online supplement). Clinical and mortality data were collected as described elsewhere (2). Informed consent was obtained from each subject. The Investigational Review Board at each center approved our study.

The primary outcome was grade 3 PGD within 72 hours after transplantation, which has demonstrated construct validity for survival (8). Grade 3 PGD at 24 hours was used to evaluate the relationship between concurrent lung injury, and grade 3 PGD at 48 or 72 hours was used to evaluate a severe lung injury phenotype (2). We evaluated all-cause mortality as an additional end point.

Plasma C3a, C4a, and C5a concentrations were measured using a commercially available cytometric bead array (BD Biosciences, San Jose, CA) in a manner devised to ensure stability of complement (see online supplement). We evaluated absolute differences in levels between each time point to assess changes during the early transplant period.

The association between complement and PGD was determined using Wilcoxon rank sum testing. We used Cox regression to evaluate associations between complement levels and time to death, conditioned on 90-day survival, to exclude bias from the effect of PGD and sepsis on early mortality. We adjusted for recipient, donor, and surgical variables (see online supplement).

Of the 190 subjects enrolled, 82 developed PGD (43%) within 72 hours post-transplant, and 33 had PGD at 48 or 72 hours (17%). Demographics of the cohort are in Table E1. There were no

differences between subjects enrolled with blood samples at all three time points and other subjects enrolled in LTOG (Table E2).

The median change in plasma C5a levels between 6 and 24 hours post transplantation was significantly greater in subjects with PGD than in those without (867 vs. -156 pg/ml, $P = 0.01$) (Figure 1A). The median change in plasma C4a levels between preoperative and 6 hours was greater in subjects with PGD (72,075 vs. -79,501, $P = 0.01$) (Figure 1B). There was no significant difference in change in plasma C3a levels between the PGD and non-PGD group at any individual time point (Table E3). In sensitivity analyses, there was no difference in complement levels using grade 3 PGD at 24 hours (Table E4). However, there was a similar relationship between change in plasma C5a levels between 6 and 24 hours (1,164 vs. 113, $P = 0.24$) and change in plasma C4a levels between preoperative and 6 hours (109,654 vs. -8,185, $P = 0.04$) using grade 3 PGD at 48 or 72 hours.

Of 175 patients with available mortality data, 32 died (17%). The change in C5a levels from 6 to 24 hours was associated with an increased risk of death (hazard ratio [HR], 1.81; 95% confidence interval [CI], 1.16, 2.83; $P = 0.01$). C5a levels measured preoperatively and 24 hours after transplantation were also associated with an increased risk of death (HR, 1.64; 95% CI, 1.29, 2.09; $P < 0.01$; and HR, 1.94; 95% CI, 1.39, 2.72; $P < 0.01$; respectively). C3a levels measured at 6 hours were associated with an increased risk of death (HR, 1.68; 95% CI, 1.04, 2.71; $P = 0.03$). There was no association between change in C3a or C4a levels and mortality (Tables E5 and E6). These associations were independent of adjustment for all tested confounders, including PGD (Table 1).

Our study demonstrates that early changes in plasma C4a and C5a are associated with PGD, and there is an association between C3a and C5a levels with mortality, independent of PGD. Collectively, these data suggest that systemic complement activation is important in both short- and long-term outcomes after transplantation.

Table 1. Association of C3a and C5a at Different Time Points with Mortality

Variable	HR C5a before Transplant (n = 175)	P Value	HR for C5a 24 h after Transplant (n = 175)	P Value	HR for Change in C5a between 6 and 24 h (n = 171)	P Value	HR for C3a at 6 h (n = 159)	P Value
Unadjusted (per 1 SD)	1.64 (1.29–2.09)	<0.01	1.81 (1.16–2.83)	<0.01	1.94 (1.39–2.72)	<0.01	1.68 (1.04–2.71)	0.03
Adjusted for								
Grade 3 PGD	1.65 (1.29–2.11)	<0.01	1.82 (1.17–2.95)	<0.01	1.95 (1.38–2.75)	<0.01	1.68 (1.04–2.70)	0.03
CBP	1.73 (1.28–2.28)	<0.01	1.86 (1.28–2.28)	<0.01	1.97 (1.39–2.80)	<0.01	1.71 (1.06–2.76)	0.03
Recipient race	1.63 (1.28–2.09)	<0.01	1.86 (1.20–2.89)	<0.01	1.93 (1.36–2.74)	<0.01	1.70 (1.04–2.77)	0.03
Recipient diagnosis	1.82 (1.33–2.49)	<0.01	1.92 (1.21–3.04)	<0.01	1.95 (1.36–2.80)	<0.01	1.73 (1.07–2.80)	0.03
Recipient sex	1.57 (1.23–1.99)	<0.01	1.79 (1.81–2.72)	<0.01	1.86 (1.34–2.59)	<0.01	1.71 (1.04–2.80)	0.03
Recipient age	1.95 (1.41–2.70)	<0.01	1.97 (1.26–3.09)	<0.01	2.00 (1.41–2.86)	<0.01	1.78 (1.09–2.89)	0.02
Donor sex	1.64 (1.28–2.10)	0.01	1.82 (1.16–2.88)	<0.01	1.94 (1.38–2.74)	<0.01	1.68 (1.04–2.72)	0.03
Donor age	1.64 (1.28–2.09)	<0.01	1.88 (1.22–2.91)	<0.01	1.94 (1.37–2.73)	<0.01	1.68 (1.04–2.73)	0.03
Donor race	1.66 (1.29–2.14)	<0.01	1.81 (1.15–2.83)	<0.01	2.02 (1.43–2.85)	<0.01	1.66 (1.00–2.75)	0.05
Donor smoking	1.69 (1.32–2.17)	<0.01	1.96 (1.27–3.04)	<0.01	2.06 (1.46–2.90)	<0.01	2.06 (1.46–2.90)	<0.01
PRBC	1.54 (1.18–2.01)	0.02	1.70 (1.10–2.67)	<0.01	1.68 (1.10–2.56)	0.02	1.63 (1.01–2.64)	0.05
Transplant type	1.66 (1.29–2.13)	<0.01	1.81 (1.16–2.82)	<0.01	1.94 (1.38–2.73)	<0.01	1.71 (1.05–2.77)	0.03
PASP	1.64 (1.27–2.11)	0.02	1.79 (1.11–2.89)	<0.01	1.99 (1.37–2.90)	<0.01	1.74 (1.03–2.95)	0.04

Definition of abbreviations: HR = hazard ratio; PASP = pulmonary artery systolic pressure at the time of transplantation; PGD = primary graft dysfunction within 72 h; PRBC = packed red blood cell transfusion within 24 h.

HRs with 95% confidence intervals are presented per 1-SD change in complement level.

The increase in C5a between 6 and 24 hours is associated with both PGD and mortality. This suggests a role for an early systemic complement response in both early and late outcomes. Prior work has implicated complement activation in lung ischemia–reperfusion injury (9). The change in C5a level was observed early after transplant and was not associated with concurrent lung injury (grade 3 at 24 h), indicating it may be driving lung injury and not just a marker of injury. Complement may be important in the pathogenesis PGD by attracting neutrophils and accelerating both the innate and adaptive immune responses within the first 24 hours after injury (10, 11).

The association of complement with mortality was independent of PGD. Prior work found an association between C3a, C5a, and obliterative bronchiolitis in a mouse model (12). Our findings in humans suggest a role for complement activation that continues after the early reperfusion period, potentially a signal of chronic immune activation starting in the early post-transplant period and leading to formation of autoantibodies, leading to chronic graft dysfunction and mortality. These findings support the study of blockade of complement activation to improve clinical outcomes after transplantation.

Our study had limitations. We were unable to measure complement levels in bronchoalveolar lavage; therefore, we could not link the plasma and lung compartments. The incidence of PGD in this study was 40%, which is higher than previous reports; however, we observed a similar trend in sensitivity analyses using a more restrictive definition of PGD. Finally, we were unable to adjust for center effect given small numbers.

In conclusion, our study suggests a role for early, systemic activation of the complement pathway in development of severe PGD and mortality after lung transplantation. ■

Ann Weinacker, M.D.
Stanford University Medical Center
Stanford, California

Vibha N. Lama, M.D.
University of Michigan
Ann Arbor, Michigan

Sangeeta M. Bhorade, M.D.
Northwestern University
Chicago, Illinois

Scott M. Palmer, M.D.
Duke University
Durham, North Carolina

Maria Crespo, M.D.
University of Pittsburgh
Pittsburgh, Pennsylvania

David J. Lederer, M.D., M.P.H.
Columbia University
New York, New York

Edward Cantu, M.D.
University of Pennsylvania Medical Center
Philadelphia, Pennsylvania

George J. Eckert, M.D.
Indiana University School of Medicine
Indianapolis, Indiana

Jason D. Christie*, M.D.
University of Pennsylvania
Philadelphia, Pennsylvania

David S. Wilkes*, M.D.
Indiana University School of Medicine
Indianapolis, Indiana

*The authors contributed equally to this work.

Author disclosures are available with the text of this letter at www.atsjournals.org

Rupal J. Shah*, M.D., M.S.C.E.
University of Pennsylvania
Philadelphia, Pennsylvania

Amir M. Emtiazjoo*, M.D.
Indiana University School of Medicine
Indianapolis, Indiana

Joshua M. Diamond, M.D., M.S.C.E.
University of Pennsylvania
Philadelphia, Pennsylvania

Patricia A. Smith, B.S.
David W. Roe, M.D.
Indiana University School of Medicine
Indianapolis, Indiana

Keith M. Wille, M.D.
University of Alabama at Birmingham
Birmingham, Alabama

Jonathan B. Orens, M.D.
Johns Hopkins University
Baltimore, Maryland

Lorraine B. Ware, M.D.
Vanderbilt University
Nashville, Tennessee

References

- Christie JD, Carby M, Bag R, Corris P, Hertz M, Weill D; ISHLT Working Group on Primary Lung Graft Dysfunction. Report of the ISHLT Working Group On Primary Lung Graft Dysfunction Part II: definition. A consensus statement of The International Society for Heart and Lung Transplantation. *J Heart Lung Transplant* 2005; 24:1454–1459.
- Diamond JM, Lee JC, Kawut SM, Shah RJ, Localio AR, Bellamy SL, Lederer DJ, Cantu E, Kohl BA, Lama VN, *et al*.; Lung Transplant Outcomes Group. Clinical risk factors for primary graft dysfunction after lung transplantation. *Am J Respir Crit Care Med* 2013;187: 527–534.
- Strainic MG, Shevach EM, An F, Lin F, Medof ME. Absence of signaling into CD4⁺ cells via C3aR and C5aR enables autoinductive TGF- β 1 signaling and induction of Foxp3⁺ regulatory T cells. *Nat Immunol* 2013;14:162–171.
- Frank MM. Complement in the pathophysiology of human disease. *N Engl J Med* 1987;316:1525–1530.
- Asgari E, Zhou W, Sacks S. Complement in organ transplantation. *Curr Opin Organ Transplant* 2010;15:486–491.
- Naka Y, Marsh HC, Scesney SM, Oz MC, Pinsky DJ. Complement activation as a cause for primary graft failure in an isogenic rat model of hypothermic lung preservation and transplantation. *Transplantation* 1997;64:1248–1255.
- Bishop MJ, Giclas PC, Guidotti SM, Su ML, Chi EY. Complement activation is a secondary rather than a causative factor in rabbit pulmonary artery ischemia/reperfusion injury. *Am Rev Respir Dis* 1991;143:386–390.
- Christie JD, Bellamy S, Ware LB, Lederer D, Hadjiliadis D, Lee J, Robinson N, Localio AR, Wille K, Lama V, *et al*. Construct validity of

the definition of primary graft dysfunction after lung transplantation. *J Heart Lung Transplant* 2010;29:1231–1239.

9. Keshavjee S, Davis RD, Zamora MR, de Perrot M, Patterson GA. A randomized, placebo-controlled trial of complement inhibition in ischemia-reperfusion injury after lung transplantation in human beings. *J Thorac Cardiovasc Surg* 2005;129:423–428.
10. Peng Q, Li K, Sacks SH, Zhou W. The role of anaphylatoxins C3a and C5a in regulating innate and adaptive immune responses. *Inflamm Allergy Drug Targets* 2009;8:236–246.
11. Pratt JR, Basheer SA, Sacks SH. Local synthesis of complement component C3 regulates acute renal transplant rejection. *Nat Med* 2002;8:582–587.
12. Suzuki H, Lasbury ME, Fan L, Vittal R, Mickler EA, Benson HL, Shilling R, Wu Q, Weber DJ, Wagner SR, et al. Role of complement activation in obliterative bronchiolitis post-lung transplantation. *J Immunol* 2013;191:4431–4439.

Copyright © 2014 by the American Thoracic Society

The Hemodynamic Effects of Prone Positioning in Patients with Acute Respiratory Distress Syndrome Remain to Be Defined



To the Editor:

We have a number of concerns regarding the results and conclusions of the study by Jozwiak and colleagues (1) and the accompanying editorial by Magder (2).

Jozwiak and colleagues' Table 2 indicates that the hemodynamic data were obtained with patients in the supine and prone positions, but the Methods section implies that the "supine" measurements were made with patients in the 45° upright posture. We would like clarification as to which posture was used as the "control." Zero reference pressures, central vascular filling pressures, and bladder pressure will change when moving from a 45° upright to 0° supine or prone. Accordingly, the changes the authors and editorialist attribute to prone positioning could have been due to taking patients out of the 45° upright position rather than to turning them prone *per se*. The effect of passive leg raising will also be affected by whether the patients were supine or in the 45° upright posture.

The level of positive end-expiratory pressure was changed between the hemodynamic measurements obtained in the two postures. Although the mean change was only 2 cm H₂O, even such a small difference can affect venous return, left- and right-sided transmural pressures, mean systemic venous pressure, and, to some extent, transpulmonary pressure.

Sixteen of the 18 patients were receiving inhaled NO. Although the dose was kept constant during the study, regional ventilation most definitely changes with prone positioning, and this will increase the number of vessels that might be exposed to NO, thereby altering global pulmonary vascular resistance.

Patients whose cardiac index did not change with prone positioning had a mean cardiac index (interquartile range) measured in the supine position (or 45° upright?) of 3.2 (2.8, 3.6) L/min/m², yet the average heart rate of patients in this group was reported as being 104 beats/min and the average stroke volume as 38 ml/m². Based on these two measurements, the average cardiac index should have approximated 3.95 L/min/m². This discrepancy is neither noted nor explained, and is particularly important

in light of the reported increase in the mixed venous oxygen saturation (from 71 to 77%) that occurred in this group of patients on turning to the prone position. How could this occur if cardiac index did not change?

Although a number of clinical and laboratory studies have shown that prone positioning rarely, if ever, has adverse hemodynamic effects, we suggest that problems with the methodology used by Jozwiak and colleagues (1), and the results they present, do not allow us to conclude that prone positioning benefits hemodynamics to any meaningful extent or to accurately assess the effects of preload as they describe. ■

Author disclosures are available with the text of this letter at www.atsjournals.org.

Richard K. Albert, M.D.
Denver Health Medical Center
Denver, Colorado

Rolf D. Hubmayr, M.D.
Mayo Clinic
Rochester, Minnesota

References

1. Jozwiak M, Teboul JL, Anguel N, Persichini R, Silva S, Chemla D, Richard C, Monnet X. Beneficial hemodynamic effects of prone positioning in patients with acute respiratory distress syndrome. *Am J Respir Crit Care Med* 2013;188:1428–1433.
2. Magder S. Is all on the level? Hemodynamics during supine versus prone ventilation [editorial]. *Am J Respir Crit Care Med* 2013;188:1390–1391.

Copyright © 2014 by the American Thoracic Society

Reply: Prone Positioning Actually Exerts Benefits on Hemodynamics!



From the Authors:

We read with interest the comments of Drs. Albert and Hubmayr about our study (1). Concerning the first of their comments, patients were in the 45° semirecumbent position at baseline (2) as stated in the Methods. We agree that the hemodynamic effects of prone positioning should result from the addition of lowering the trunk to the horizontal position and prone positioning from the supine position, as we have previously reported (3) and noted in the Discussion. The postural change we used in the present study is recommended for clinical practice and was the method used in recent trials (4) (i.e., starting from the semirecumbent position).

Pressure transducers were fixed directly on the patient's thorax and were not moved from this position during the postural changes. Pressure transducers were carefully zeroed against atmospheric pressure after each postural change. Finally, we agree that the hemodynamic effects of passive leg raising are influenced by the starting position of the patient, as we have also previously reported (3). This is particularly relevant to our study, in which prone positioning also started from the semirecumbent position (2).

The adjustment of positive end-expiratory pressure after prone positioning resulted only in a 2-cm H₂O (1.5 mm Hg) increase.