



CrossMark  
click for updates

## Research

**Cite this article:** Letten AD, Keith DA, Tozer MG. 2014 Phylogenetic and functional dissimilarity does not increase during temporal heathland succession. *Proc. R. Soc. B* **281**: 20142102.  
<http://dx.doi.org/10.1098/rspb.2014.2102>

Received: 1 September 2014

Accepted: 6 October 2014

### Subject Areas:

ecology

### Keywords:

community phylogenetics, succession, functional traits, coexistence, limiting similarity, community assembly

### Author for correspondence:

Andrew D. Letten

e-mail: [a.letten@unsw.edu.au](mailto:a.letten@unsw.edu.au)

Electronic supplementary material is available at <http://dx.doi.org/10.1098/rspb.2014.2102> or via <http://rspb.royalsocietypublishing.org>.

# Phylogenetic and functional dissimilarity does not increase during temporal heathland succession

Andrew D. Letten<sup>1</sup>, David A. Keith<sup>1,2,3</sup> and Mark G. Tozer<sup>2</sup>

<sup>1</sup>Centre for Ecosystem Science, School of Biological, Earth and Environmental Sciences, UNSW, Sydney, New South Wales 2052, Australia

<sup>2</sup>NSW Office of Environment and Heritage, Hurstville, New South Wales 2220, Australia

<sup>3</sup>Long Term Ecological Research Network, Terrestrial Ecosystem Research Network, Fenner School of the Environment Australian National University, Canberra, Australian Capital Territory 2601, Australia

Succession has been a focal point of ecological research for over a century, but thus far has been poorly explored through the lens of modern phylogenetic and trait-based approaches to community assembly. The vast majority of studies conducted to date have comprised static analyses where communities are observed at a single snapshot in time. Long-term datasets present a vantage point to compare established and emerging theoretical predictions on the phylogenetic and functional trajectory of communities through succession. We investigated within, and between, community measures of phylogenetic and functional diversity in a fire-prone heathland along a 21 year time series. Contrary to widely held expectations that increased competition through succession should inhibit the coexistence of species with high niche overlap, plots became more phylogenetically and functionally clustered with time since fire. There were significant directional shifts in individual traits through time indicating deterministic successional processes associated with changing abiotic and/or biotic conditions. However, relative to the observed temporal rate of taxonomic turnover, both phylogenetic and functional turnover were comparatively low, suggesting a degree of functional redundancy among close relatives. These results contribute to an emerging body of evidence indicating that limits to the similarity of coexisting species are rarely observed at fine spatial scales.

## 1. Introduction

Given limited scope for experimental manipulation in natural systems, a common approach in community ecology is to infer the mechanisms structuring communities from the distribution of their component species and traits. Inferring processes from patterns is of course non-trivial, relying as it necessarily does on a raft of assumptions about how the components of communities (i.e. species) respond to each other and their environment. This *modus operandi* is nowhere more apparent than in the phylogenetic and trait-based analyses of community assembly that have proliferated in recent years [1–3]. To date, the vast majority of phylogenetic and trait-based studies of community assembly have comprised ‘static’ analyses where assembly processes are inferred from patterns observed at a single snapshot in time (as reviewed in [4,5]). By necessity, static studies of this kind either ignore the dynamic properties of communities, treat community assembly as a one-off event, or at best assume that observed patterns are representative of prevailing processes. While this assumption may hold in some late successional systems, in dynamic or frequently disturbed systems, the processes that govern community structure may fluctuate considerably over time.

Disentangling sequential assembly processes from observed temporal patterns is complicated by competing and/or unresolved theoretical predictions. One oft-repeated axiom of community ecology holds that competition inhibits species with high niche overlap from coexisting, while environmental filtering has the opposite effect of limiting the range of successful ecological strategies at any one

location [6–8]. It follows logically that if ecological niches are phylogenetically conserved, these two apparently opposing processes will leave different signatures on the phylogenetic structure of communities; competition will drive phylogenetic divergence, while strong environmental filters will lead to communities consisting largely of close relatives [1,9]. Coupling this framework with classical successional theory [10–13], we might anticipate communities will transition from exhibiting functional and phylogenetic convergence early in succession to becoming increasingly functionally and phylogenetically dispersed as competition increases in relative importance. However, even when niches are phylogenetically conserved, it has recently been argued that this dichotomous framework makes untenable assumptions about the relative importance of niche differences and fitness differences in determining the outcome of community assembly [14,15]. As recognized by Mayfield & Levine [15], when differences in competitive ability exceed niche differences for a large proportion of the species pool, competition may exclude all but the most effective resource competitors. From this alternative perspective, we might predict phylogenetic and functional convergence, rather than divergence, if competition increases through succession. Evidence that competition may indeed drive phylogenetic convergence has recently begun to emerge from a variety of systems and taxa [16–19].

Given the paucity of suitable long-term datasets, most phylogenetic and trait-based research on the effects of disturbance and/or succession on community structure has been limited to static comparisons of relatedness and functional similarity in disturbed versus non-disturbed communities [20–23], or across different successional states in a chronosequence (i.e. a space-for-time substitution) [8,16,24,25]. With a few notable exceptions [16,24], most studies have reported greater functional and/or phylogenetic dispersion in undisturbed or late successional communities, including along a rare time series [26]. Nevertheless, given the known dangers of space-for-time substitutions in ecological research [27], additional temporal successional studies are needed to more robustly explore the generality of this pattern.

An important advantage of phylogenetic and functional analyses of temporal datasets is that it enables the compilation of species pools that are a truer representation of potential colonizers. In the past, static studies have been criticized for deriving species pools from regional species-lists which may include numerous taxa that may never colonize a site even in the absence of competitors [28,29]. This coarse approach may potentially bias analyses towards finding phylogenetic or functional convergence resulting from broad-scale environmental filtering [5]. An alternative approach is to try to eliminate the effects of large scale filters *a priori* by constraining the species pool to known colonizers of a site [29]. This of course is limited by the availability of data collected over a sufficiently long period of time to record not only those species present at any given time but also the aptly named dark diversity [30]; i.e. species that may only be competitive (and therefore more likely to be detectable) for a brief period during community assembly/succession. Long-term studies, where the presence of species is monitored at intervals at permanent sites, make this achievable.

In this study, we investigated temporal trends in the phylogenetic and functional community structure of understorey plants in fire-prone heathland in southeast Australia. Previous work has provided evidence of strong competitive hierarchies

related to vertical stature in this system, with overstorey shrubs typically eliminating understorey species through succession post-fire [31–33]. However, unlike much of the existing literature on phylogenetic and functional community structure through succession in plant communities [16,25,26,34], here we explicitly focus on understorey communities. With access to compositional data collected over more than 20 years through multiple fire events, this study represents one of the most comprehensive assessments of temporal dynamics in both phylogenetic and functional community structure to date.

While the phylogenetic and functional structure of plant communities may arise through a complex interplay of various evolutionary (e.g. trait evolution and niche conservatism) and ecological processes (e.g. competition, environmental filtering, herbivory, etc.), we concentrated on a subset of hypotheses that reflect the competing theories which have received the most attention in the recent literature. First, assuming fire acts as a filter on the species pool we hypothesized that plots would exhibit functional clustering immediately following fire, and correspondingly also exhibit phylogenetic clustering if the traits mediating early dominance are conserved. Alternatively, if key assembly traits are not conserved, or if measured functional traits have little bearing on community assembly, then we would expect functional and phylogenetic patterns to be uncorrelated. In addition, we made alternative predictions about the trajectories of communities in the period following fire. If increased competition through succession enforces a limit on the similarity of coexisting species, communities should become increasingly functionally dispersed though time, and therefore also phylogenetically dispersed if species function is conserved. Alternatively, if increased competition results in the exclusion of all but the most dominant resource competitors (*sensu* [15]), or if assembly is primarily driven by fluctuating environmental processes, functional and phylogenetic clustering should remain static or increase through time.

Our secondary aim was to infer what processes are likely to be driving any observed trends. To this end, we not only considered within-community structure but also trends in community-weighted mean trait values and rates of temporal phylogenetic and functional turnover relative to taxonomic turnover. This provided a means to evaluate the extent to which community assembly through succession is structured by deterministic or stochastic processes [35]. For instance, a deterministic model of community assembly assumes that species turnover through time is non-random with respect to species function, and by inference phylogeny. If biotic and abiotic conditions are relatively constant through time, we would predict less phylogenetic and/or functional turnover relative to the observed rate of taxonomic turnover. Conversely, if conditions fluctuate though time, we would predict greater than expected phylogenetic/functional turnover. Finally, if function and phylogeny have no bearing on community assembly (i.e. a stochastic or neutral model *sensu* [36]), we should expect taxonomic turnover to be random with respect to phylogeny and function.

## 2. Material and methods

### (a) Study site, sampling and fire history

The study was conducted in an area of fire-prone coastal heathland in Royal National Park, New South Wales, Australia (centred on 34°05'46.00" S, 151°09'02.73" E). The vegetation in the area is characterized by sclerophyllous plants, with a

herbaceous ground layer dominated by species within the Restionaceae, Cyperaceae and Poaceae families, and woody overstorey layers dominated by shrubs within the Proteaceae, Myrtaceae, Ericaceae and Fabaceae. The vegetation is fire-prone, with the herbaceous component regenerating rapidly and gradually becoming overtopped by shrubs within 5–6 years post-fire [33]. The soils, which derive from sandstone, tend to be highly infertile, acidic and siliceous. The topography is relatively flat with elevations ranging from 68 to 72 m above sea level.

In 1990, 56 permanent 0.25 m<sup>2</sup> plots were established along eight transects arranged in pairs, with each transect comprising seven plots. Plots in each transect pair are spaced an average of 18 m apart (min = 5 m, max = 45 m), while plots in different transect pairs are separated by an average distance of 211 m (min = 104 m; max = 323 m). Henceforth we refer to these two discrete spatial scales as the ‘plot’ scale ( $n = 56$ ) and the ‘site’ scale ( $n = 4$ ). Since 1990, the total abundance (number of stems) of all herbaceous species within each plot has been censused on nine separate occasions (1990–1994, 1999, 2002, 2007 and 2011) [37]. A fire in 1988 prior to the first census burnt the entire site, with subsequent fires in 1994 (entire site burnt) and 2001 (14 plots along one transect-pair burnt). The 1994 fire occurred prior to the census of that year.

### (b) Species pool and community phylogeny

A species pool was defined comprising all herbaceous angiosperm species (49 unique taxa) recorded across all 56 plots since monitoring began. Non-angiosperms were excluded because they were at low abundance and are known, owing to their early divergence from all other species in the pool, to have a disproportionately large effect on metrics of phylogenetic community structure [38]. A community phylogeny (figure 1), derived from DNA sequence data for two commonly used plastid gene regions (rbcL and matK), was generated using the programs PHYLOGENATOR [39] and BEAST [40]. Full phylogeny construction details are provided in the electronic supplementary material, appendix A.

### (c) Functional traits

All recorded species were scored for seven functional traits related to competitive ability and/or tolerance of disturbance (seed mass, plant height, Raunkiaer life-form, fire response, fecundity, longevity and seedbank persistence) [41,42]. All trait data were obtained from existing databases, the primary literature and expert knowledge, with the exception of seed mass which was supplemented with measurements made from herbarium specimens. Seed mass (mg) and plant height (cm) were scored on a continuous scale, while the five remaining traits were coded on an ordinal scale. This included two strictly categorical traits (fire response and life-form) and three implicitly continuous traits (fecundity, longevity and seedbank persistence) that owing to the absence of sufficiently high-resolution quantitative data were classified in bins. Fire response was coded with three levels (killed = 1, facultative resprouter = 2, obligate resprouter = 3), life-form with three levels (geophyte = 1, hemicryptophyte = 2, epiphyte = 3), fecundity with four levels (low = 1, low-moderate = 2, moderate = 3, high = 4), longevity with five levels (less than 5 years = 1, 5–10 years = 2, 10–25 years = 3, 25–50 years = 4, more than 50 years = 5) and seedbank persistence with three levels (transient = 1, moderate persistence = 2, persistent = 3). Several commonly measured leaf traits recognized to represent important axes of niche differentiation (e.g. specific leaf area and leaf dry matter content) were not included in the study owing to a large proportion of the dominant species lacking true leaves.

In order to assess the correlation between phylogenetic relatedness and functional similarity, we tested for significant phylogenetic signal in continuous traits using Blomberg’s  $K$  statistic [43] and in ordinally coded traits using the ‘fixed tree,

character randomly reshuffled’ model of Maddison & Slatkin [44] with ordered costs for character state transitions.

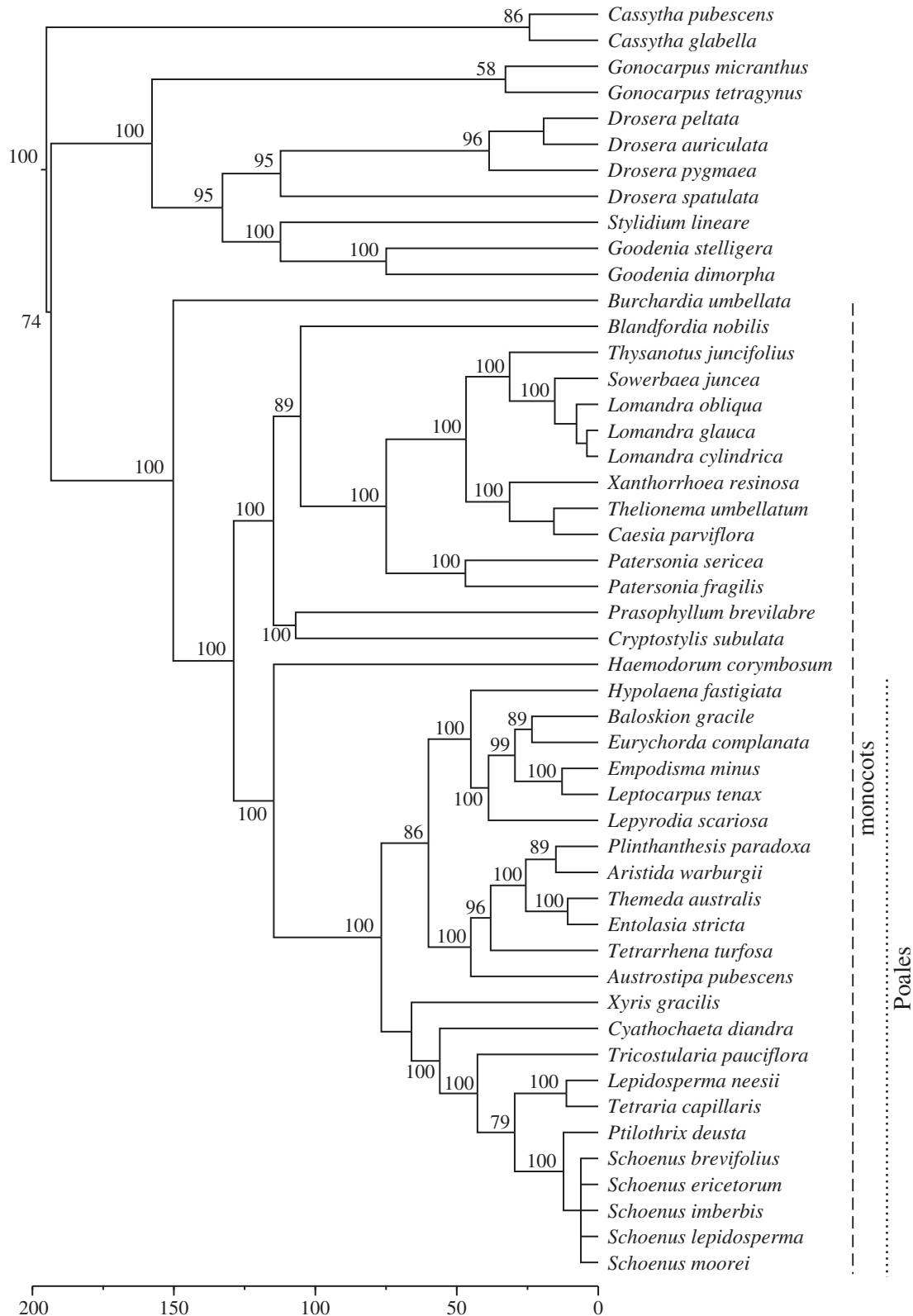
### (d) Temporal change in phylogenetic and functional community structure

Phylogenetic community structure within individual plots at each census was evaluated using two commonly used metrics: mean nearest taxon distance (MNTD, mean distance separating each species in each community from its closest relative), and mean pairwise phylogenetic distance (MPD, mean pairwise distance between all species in each community) [1,9]. While these two metrics are typically correlated they provide complementary information, with MNTD being more sensitive to clustering or dispersion near the tips of the phylogeny, and MPD being more sensitive to tree-wide patterns of clustering or dispersion [45]. For both MNTD and MPD, we used a square-root transformation of phylogenetic distance in order to account for nonlinear scaling of phylogenetic relatedness and functional distance [46]. Standardized effects sizes (SEs) for MNTD and MPD were obtained by comparing observed values to those expected under a null model of community assembly. Both observed and null values were quantified using abundance-weighted data. A null model was used that randomly shuffled the names of individuals across the tips of the phylogeny 999 times. This is considered to be the most appropriate null model for temporal analyses [26,35].

An identical framework was used to evaluate functional community structure at each census, where the functional analogue of MNTD (F-MNTD) represents the mean distance to each species’ nearest neighbour in multi-trait space, and the functional analogue of MPD (F-MPD) represents the mean pairwise distance in multi-trait space between all species in the community. A Gower distance (which allows for range-standardized quantitative and qualitative data) was used to generate the functional distance matrix representing the functional similarity of species in multivariate trait space.

In order to account for potential sensitivity of community-wide patterns to spatial scale [47], all analyses of individual plots were replicated at a larger spatial scale by summing plot composition within each site (transect-pair,  $n = 4$ ). In addition, while we were primarily interested in the trajectory of the full understorey community through time, we replicated all analyses at three nested phylogenetic scales: (i) all species, (ii) monocots, and (iii) Poales (figure 1).

To examine trends in phylogenetic and functional community structure, linear models and linear mixed-models were fit for phylogenetic and functional community structure as a function of time. To account for spatial and temporal non-independence, random effects were fit for transect-pair (random intercept; transect-pairs that did not burn in 2001 only) and plots (random slope and intercept) at the plot scale, and for transect-pair (random intercept; transect-pairs that did not burn in 2001 only) at the site scale. Models were fitted for either side of the 1994 fire, i.e. 1990–1993 and 1994–2011. For the period from 1994 to 2011, separate models were fitted for those plots/transect-pairs that have not burnt since 1994 ( $n = 42/3$ ) and those that burnt in the 2001 fire ( $n = 14/1$ ). Given that coefficients may be biased for random effects with fewer than five levels, we checked our results against those obtained when using transects ( $n = 8$ ) as a random effect at the plot scale, and when treating transect as the site grouping at the site scale. All analyses of phylogenetic and functional community structure were performed with the R-package ‘picante’ [45]. An  $r^2$  summarizing the variance in phylogenetic and functional community structure explained by time was calculated using the approach for mixed-effects models provided by Nakagawa & Schielzeth [48] and extended by Johnson [49]. Finally, Welch’s  $t$ -test was used to determine whether observed differences in the temporal



**Figure 1.** Community phylogeny for all species recorded in plots across the full monitoring period. Vertical dashed/dotted lines denote species belonging to two nested taxonomic groups (monocots and Poales) on which separate analyses were performed. Node labels denote posterior support values, with unlabelled nodes indicating points where taxa were manually added to the phylogeny post processing. Timescale is in millions of years before present.

trajectory between sites with different burn frequencies may be attributable to different initial values.

### (e) Temporal trends in community-weighted mean trait values

To complement the core analyses, we also investigated temporal trends in community-weighted mean trait values at the plot

scale. Community-weighted mean trait values were calculated for each trait in each plot at each time-step by weighting species' trait values by their proportional abundance. For the purposes of obtaining a single value for each trait in each plot, ordinal traits were treated quantitatively. As for measures of phylogenetic and functional community structure, to examine temporal trends, linear models and linear mixed effect models were fitted for each community-weighted mean trait value as a function of time.

## (f) Temporal phylogenetic and functional beta turnover

To quantify temporal phylogenetic and functional beta turnover, we used between community equivalents of MNTD and MPD which provide a measure of the phylogenetic and functional dissimilarity between pairs of plots sampled over different years [35,50]. The formulae for calculating phylogenetic and functional nearest-neighbour dissimilarity ( $D_{nn}$ , the beta diversity analogue of MNTD) and pairwise dissimilarity ( $D_{pw}$ , the beta diversity analogue of MPD) are provided in the electronic supplementary material, appendix B. To determine whether temporal phylogenetic and functional beta diversity was different from that expected given the rate of taxonomic turnover, we compared observed values to those expected under null models. As for MNTD and MPD, null models for  $D_{nn}$  and  $D_{pw}$  were generated by randomly shuffling individuals across the tips of the phylogeny or the columns of the functional distance matrix 999 times. Given the large number of possible temporal pairwise comparisons, we only considered the rate of phylogenetic and functional beta turnover of all census points relative to the first census in 1990 and relative to the immediately preceding census point. As for within-community measures, the above analyses were replicated at the two additional phylogenetic scales (monocots and Poales).

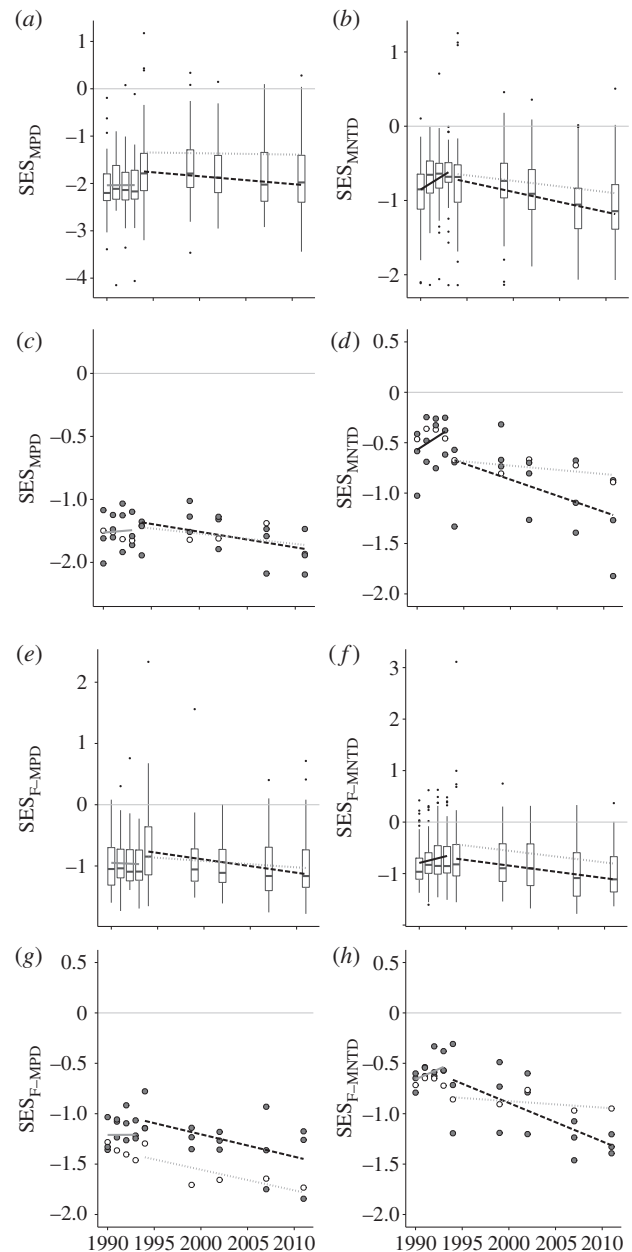
## 3. Results

### (a) Temporal change in phylogenetic and functional community structure

Throughout the 20 year survey period, species composition at both spatial scales was consistently phylogenetically clustered relative to the species pool (figure 2). Clustering was particularly pronounced for MPD with 53% of plots and 100% of sites exhibiting significant clustering ( $SES_{MPD} < -1.96$ ) over the full sampling period. Between 1990 and 1993, there was a weak increase (towards zero from negative) in MNTD at both the plot scale ( $r^2 = 0.05$ ,  $p < 0.001$ ) and the site scale ( $r^2 = 0.10$ ,  $p < 0.05$ ) (figure 2*b,d*), but no significant trend in MPD (figure 2*a,c*). By contrast, following the 1994 fire, both MNTD and MPD exhibited a consistent decreasing trend in those plots (MNTD:  $r^2 = 0.10$ ,  $p < 0.001$ ; MPD:  $r^2 = 0.02$ ,  $p < 0.05$ ) and sites (MNTD:  $r^2 = 0.29$ ,  $p < 0.005$ ; MPD:  $r^2 = 0.16$ ,  $p = 0.06$ ) that did not burn again in 2001. The plots and single site that burnt again in 2001 had flatter, non-significant slopes for both MNTD and MPD over the same time interval.

When the species pool was constrained to just monocots or Poales, results were similar to those described for the full species pool with all spatial-phylogenetic scale combinations exhibiting a decreasing trend in MPD and MNTD following the 1994 fire (electronic supplementary material, figures S1–S2). The only notable difference between the main results and those obtained with reduced species pools was less negative effect sizes in the latter case. This was particularly true for species pools limited to Poales, for which MPD and MNTD was mostly positive, but still low with only MNTD at the plot scale having any (less than 1%) significantly phylogenetically over-dispersed plots over the entire monitoring period.

All seven measured traits exhibited significant ( $p < 0.05$ ) phylogenetic signal (electronic supplementary material, table S1). In addition, patterns in functional community structure broadly mirrored those observed for phylogenetic community structure. Almost all plots and sites exhibited functional clustering throughout the monitoring period (figure 2*e–h*), although notably within the  $-1.96$  threshold



**Figure 2.** Phylogenetic and functional community structure through time based on the standardized effect size of: mean pairwise phylogenetic distance (MPD) between all species in each (a) plot and (c) site; mean phylogenetic distance between nearest taxonomic neighbours (MNTD) in each (b) plot and (d) site; mean pairwise functional distance (F-MPD) between all species in each (e) plot and (g) site; mean functional distance between nearest taxonomic neighbours (F-MNTD) in each (f) plot and (h) site. Trendlines correspond to models of MNTD/MPD versus time for all plots/sites through the first 4 years of sampling (solid line); plots/sites that only burnt in 1994 (dashed line) and plots that burnt in 1994 and 2001 (dotted lines). Trend lines shaded black indicate significant slope coefficients at  $p < 0.05$ ; grey lines indicate insignificant slopes. In (a,b,e,f), boxplot midline corresponds to median value for all 56 plots at each census point; upper and lower hinges give the first and third quartiles; whiskers extend from the hinge to the highest value that is within  $1.5 \times$  interquartile range; and data points beyond whiskers are shown as outliers. In (c,d,g,h), open circles correspond to sites that burnt in the 2001 fire; grey-filled circles correspond with sites that did not burn in 2001.

for statistical significance. In addition, temporal trends were similar to the phylogenetic analyses, with plots/sites that last burnt in 1994 becoming increasingly functionally clustered through time (plots (F-MNTD:  $r^2 = 0.07$ ,  $p < 0.001$ ;

F-MPD:  $r^2 = 0.06$ ,  $p < 0.001$ ); sites (F-MNTD:  $r^2 = 0.45$ ,  $p < 0.001$ ; F-MPD:  $r^2 = 0.27$ ,  $p < 0.05$ ). As with the phylogenetic analyses, the plots and single site that burnt again in 2001 had flatter, non-significant slopes, although it is important to note that at the site scale statistical power was low given the small number ( $n = 5$ ) of data points. Prior to the 1994 fire, the only significant trend was a very weak increase (towards zero from negative) in F-MNTD at the plot scale ( $r^2 = 0.01$ ,  $p < 0.01$ ). When the species pool was constrained to just monocots or Poales, results were qualitatively identical to the main results (electronic supplementary material, figures S3–S4), but as for the phylogenetic analyses, effect sizes were reduced.

The observed differences in temporal trajectory cannot be attributed to different initial values given that there were no significant differences at the start of the sampling period between sites with different subsequent burn frequencies (MNTD:  $t = -0.8406$ ,  $p = 0.4312$ ; MPD:  $t = 0.7769$ ,  $p = 0.4431$ ; F-MNTD:  $t = 0.7769$ ,  $p = 0.4431$ ; F-MPD:  $t = 1.3654$ ,  $p = 0.1812$ ). In addition, coefficients and standard errors were nearly identical when transects was treated as a random effect at the plot scale, or when the site scale was formed by summing abundance across transects rather than transect pairs. Finally, it is worth noting that effect sizes were weaker but remained predominately negative when null randomizations were restricted to those species observed within any given year.

### (b) Temporal trends in community-weighted mean trait values

In common with observed patterns of phylogenetic and functional community structure, temporal trends in mean-trait values tended to differ between plots with different burn frequencies (figure 3). Over the 4 years prior to the 1994 fire, mean-trait values in all plots were comparatively static, with time explaining no more than 3% of the variation in community-weighted mean trait values for any given trait. By contrast, following the 1994 fire, plots within those transects that went unburnt for the remainder of the sampling period exhibited a significant increase in mean seed-weight ( $r^2 = 0.07$ ,  $p < 0.005$ ), longevity ( $r^2 = 0.09$ ,  $p < 0.001$ ) and the proportion of obligate resprouters ( $r^2 = 0.16$ ,  $p < 0.001$ ), and a decrease infecundity ( $r^2 = 0.18$ ,  $p < 0.001$ ) and the proportion of hemicryptophytes ( $r^2 = 0.10$ ,  $p < 0.001$ ). By contrast, plots that burnt again in 2001 exhibited mostly static mean-trait values, with only a small decrease in fecundity ( $r^2 = 0.02$ ,  $p < 0.001$ ).

### (c) Temporal phylogenetic and functional beta turnover

Patterns of phylogenetic and functional beta turnover relative to the first census in 1990 were similar to those relative to the immediately preceding census point (for the latter see the electronic supplementary material, figure S5). Observed temporal phylogenetic turnover was strongly dependent on the metric used and the phylogenetic resolution of the analysis (figure 4). When evaluated under a nearest-neighbour dissimilarity metric for all species ( $D_{nn}$ ), phylogenetic turnover tended to be relatively random with respect to taxonomic turnover, except during early census-point comparisons when some plots showed greater than expected phylogenetic turnover. By contrast, under a pairwise

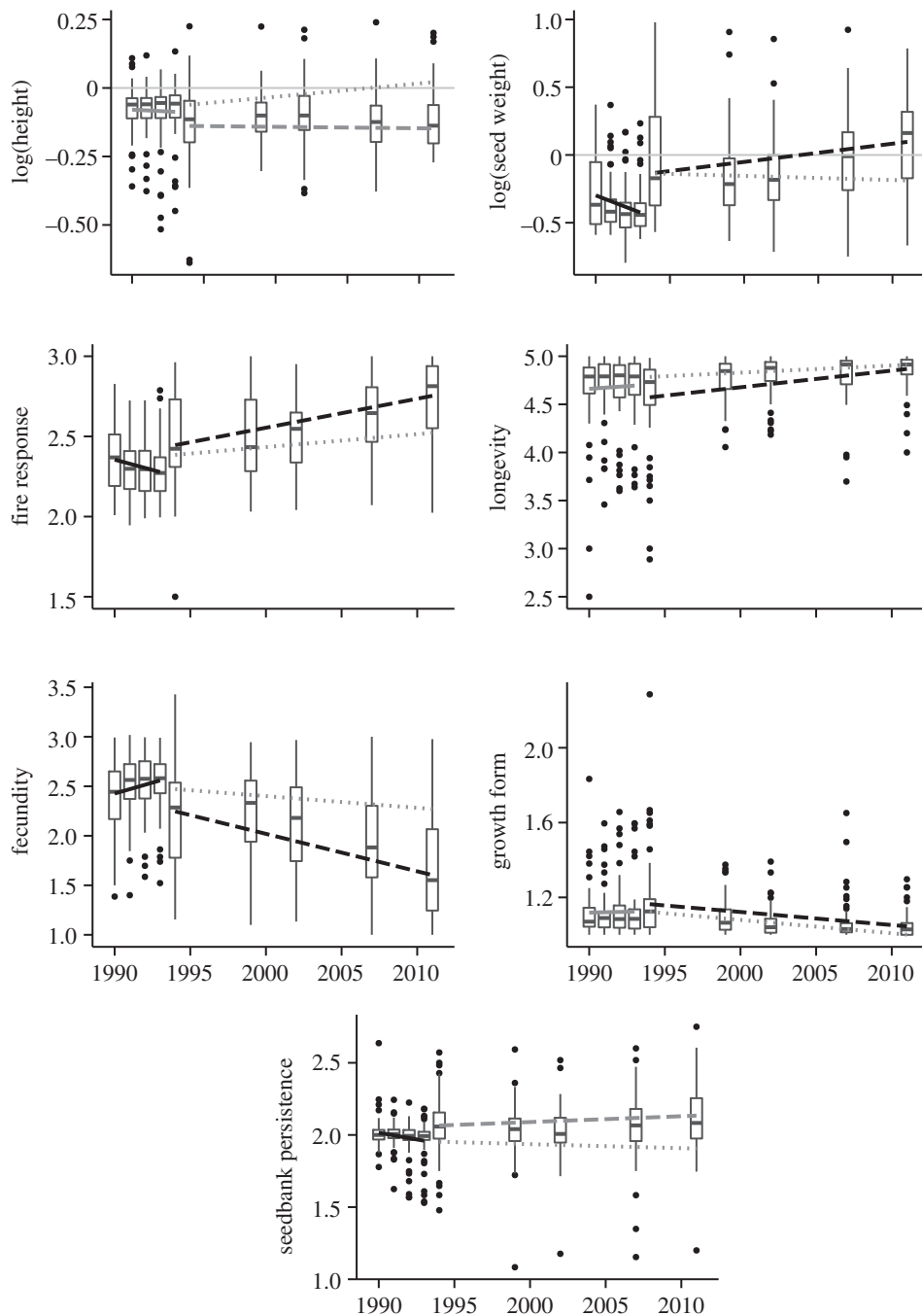
dissimilarity metric ( $D_{pw}$ ), temporal phylogenetic turnover was mostly less than that expected given observed taxonomic turnover for all species, but tended to exhibit more random patterns of turnover when the species pool was limited to monocots and in particular to Poales (electronic supplementary material, figure S6). Taken together, these results indicate that plot composition through time tended to be constrained from a phylogeny-wide perspective, i.e. limited to a small subset of clades (mainly Poales) relative to the community phylogeny. However, within those well-represented clades, turnover tended to be either largely random as indicated by ( $D_{pw}$ ) for Poales, or occasionally directional as indicated by high values for ( $D_{nn}$ ) for the whole phylogeny. This latter inference is based on ( $D_{nn}$ ) being more sensitive to turnover near the tips of the phylogeny.

For both metrics and all three higher phylogenetic scales, observed temporal functional turnover was less than expected given taxonomic turnover (electronic supplementary material, figures S7–S9) suggesting that the overall functional composition, as derived from the seven measured traits, was relatively fixed through time. However, as indicated by trends in community-weighted mean trait values and observations of temporal turnover in individual traits, this appeared to be driven by low turnover in several traits, in particular, plant height and seedbank persistence.

## 4. Discussion

A classical axiom of community ecology holds that abiotic processes (e.g. environmental filtering) dominate early in succession, while the relative importance of biotic processes (e.g. competition) increases as communities mature [10–13]. Assuming that closely related and functionally similar species compete most intensely, it follows that during succession communities may be expected to transition from those that are dominated by closely related and/or functionally similar taxa to those that comprise more phylogenetically and functionally dispersed assemblages [8,34]. In this study, we found no evidence for an increase in phylogenetic and functional dispersion over 20 years of succession post-fire in a coastal heathland community. Instead, species composition at both the plot scale and the site scale tended on average to become more phylogenetically and functionally clustered over time, except notably in those plots where succession was interrupted by fire.

These findings contrast with a number of previous studies, where an opposite pattern of increased phylogenetic and/or functional dispersion has been reported in non-disturbed versus disturbed communities [22,23], in late successional stages along chronosequences [8,25], and along a rare time series of succession [26]. However, in several rare exceptions to the rule that echo our own findings, Verdu *et al.* [24] found that the competitive exclusion of pioneer species appeared to reduce phylogenetic diversity in the very latter stages of a chronosequence of post-fire succession, whereas Kunstler *et al.* [16] attributed greater functional and phylogenetic convergence with increasing forest plot age to competition sorting species along a competitive hierarchy in plant height. Most recently, Bhaskar *et al.* [34] found little evidence for an increase in functional dispersion in secondary tropical forests at various stages post agricultural abandonment. Together with these earlier studies, our results

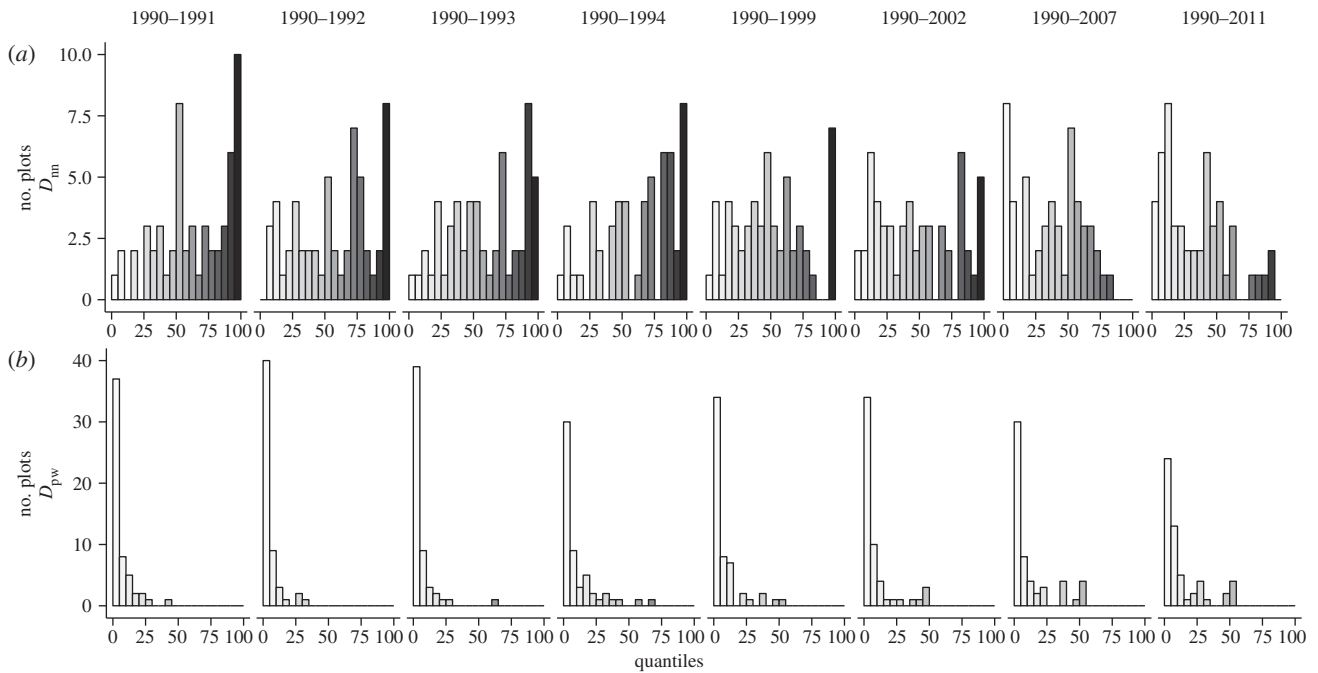


**Figure 3.** Community-weighted mean-trait values through time. Trendlines correspond to models of individual traits versus time for all plots/sites through the first 4 years of sampling (solid line); plots/sites that only burnt in 1994 (dashed line) and plots that burnt in 1994 and 2001 (dotted lines). Trend lines shaded black indicate significant slope coefficients at  $p < 0.05$ ; grey lines indicate insignificant slopes. Boxplot midline corresponds to median value for all 56 plots at each census point; upper and lower hinges give the first and third quartiles; whiskers extend from the hinge to the highest value that is within  $1.5 \times$  interquartile range; and data points beyond whiskers are shown as outliers.

reinforce growing awareness of the complex, and often unpredictable, interaction between community assembly processes and patterns of phylogenetic and functional community structure [15–18].

While it remains difficult to infer underlying processes from static snapshots of community structure, the observed directional shifts in several community-weighted traits through time are indicative of deterministic turnover in this system. These trends tended to be consistent with predictions based on known relationships between functional traits and life-history strategies [41,42], i.e. the transition from species with relatively fast life histories (small seeds, high fecundity and short lifespans) in early succession, to those with

slower life histories (large seeds, low fecundity and long lifespans) in late succession (figure 3). In particular, the observed increase in community-weighted mean seed size, a trait often correlated with shade tolerance [51], is consistent with the replacement of good dispersers and fast germinators/resprouters in the immediate post-fire environment by understory species with greater shade tolerance as the shrub layer becomes more established. It also reveals that the same traits that exhibited directional shifts in the unburnt plots post 1994, were mostly temporally static in those plots that burnt again in 2001, suggesting that fire prevented the competitive exclusion of early successional species by late successional species.



**Figure 4.** Temporal phylogenetic beta turnover for all species quantified by (a)  $D_{nn}$  and (b)  $D_{pw}$ . Low quantile scores (white) indicate low turnover in phylogenetic composition relative to the observed rate of taxonomic turnover; high quantile scores (black) indicate high turnover in phylogenetic composition relative to the observed rate of taxonomic turnover. Values of less than 2.5 or more than 97.5 are significant at the 0.05 level.

Mediated by the shrub overstorey, light deprivation to the ground layer may act more like an abiotic stressor external to the system. As such, we might attribute phylogenetic and functional clustering later in succession to a filtering process that is biotic but largely external to the ground layer component of the community. However, even if we treat the effect of shading as an external process, competition for resources in the light deprived understorey is still likely to play a significant role in the assembly process. Indeed, at the local scale of interacting species, relative shade tolerance will translate into fitness differences, whereby the more shade tolerant species are at a competitive advantage. If there is a hierarchy of shade tolerance within the ground layer, competition among ground layer species will be expected to drive functional clustering. The notion that competition may drive functional and phylogenetic clustering via hierarchical differences in species' competitive ability was highlighted by Mayfield & Levine [15] and has received empirical backing by several recent studies [16,17,19]. However, to the best of our knowledge this is the first study to present patterns of phylogenetic and functional community structure consistent with this process emerging through a successional time series.

In spite of the observed directional shifts in community-weighted mean-trait values, overall functional and pairwise phylogenetic beta-diversity was comparatively constrained through time. This however was counter-balanced by a relatively high rate of temporal phylogenetic beta-diversity among closely related taxa early in succession ( $D_{nn}$ ; figure 4). Together with largely stochastic patterns of turnover among the highly represented Poales, a picture emerges of a system in which the dominant species are consistently drawn from a small number of clades within the overall phylogeny. However, within those well-represented clades, turnover appears largely stochastic or neutral, with functionally similar close relatives replacing each other through time. This disconnects

between results observed at the individual trait level and summary statistics of overall phylogenetic and functional turnover highlights the importance of combined approaches. One explanation is that despite directional shifts in individual traits indicating that the relative fitness of different traits is changing through time, there is still substantial functional redundancy near the tips of the phylogeny, with the fate of individual taxa being relatively stochastic [52].

Our approach focused specifically on the ground layer within a vertically stratified community, whereas most previous studies of phylogenetic and functional community structure through succession in plant communities have focused on the canopy layer [25,26] or have been conducted in less vertically stratified communities such as grasslands [8]. Where data are available for both canopy and ground layer components of a community, separate analyses for each strata may be preferable to avoid conflating the relative effects of different assembly processes in each strata. Phylogenetic and functional convergence through succession may be a more general feature of understorey communities than it is of less stratified or canopy 'communities' (but see [16], for an example of convergence among canopy species in temperate forests). Ultimately, more phylogenetic and functional-based studies of community assembly through succession in the understorey of vertically stratified communities are needed to verify this hypothesis.

Disentangling the relative contribution of abiotic and biotic processes in driving community assembly through succession remains a major challenge for community ecologists. Contrary to expectations, here we have shown that phylogenetic and functional dispersion is not the only, or necessarily the most likely, outcome of succession. This finding contributes to an emerging body of research re-evaluating the role of limiting functional similarity in determining the outcome of community assembly [15–18]. Efforts to partition out the relative importance of the underlying processes driving functional



and phylogenetic convergence through succession in this, and other systems, will be a valuable focus of future work.

**Data accessibility.** Data to be made available in the Long Term Ecological Research Network Data Portal (<http://www.ltern.org.au/>) in late 2015.

**Acknowledgements.** Thanks to Will Pearse for assistance with PHYLOGENERATOR, Nate Swenson for providing code for the analysis of phylogenetic and functional beta diversity, and Jodi Price, Will Cornwell and two anonymous reviewers for valuable comments on an earlier draft of this paper.

## References

- Webb CO. 2000 Exploring the phylogenetic structure of ecological communities: an example for rain forest trees. *Am. Nat.* **156**, 145–155. (doi:10.1086/303378)
- Cornwell WK, Ackerly DD. 2009 Community assembly and shifts in plant trait distributions across an environmental gradient in coastal California. *Ecol. Monogr.* **79**, 109–126. (doi:10.1890/07-1134.1)
- Kraft NJB, Ackerly DD. 2010 Functional trait and phylogenetic tests of community assembly across spatial scales in an Amazonian forest. *Ecol. Monogr.* **80**, 401–422. (doi:10.1890/09-1672.1)
- Swenson NG. 2013 The assembly of tropical tree communities: the advances and shortcomings of phylogenetic and functional trait analyses. *Ecography* **36**, 264–276. (doi:10.1111/j.1600-0587.2012.00121.x)
- Götzenberger L *et al.* 2012 Ecological assembly rules in plant communities: approaches, patterns and prospects. *Biol. Rev. Camb. Phil. Soc.* **87**, 111–127. (doi:10.1111/j.1469-185X.2011.00187.x)
- Weihner E, Keddy PA. 1995 Assembly rules, null models, and trait dispersion: new questions from old patterns. *Oikos* **74**, 159–164. (doi:10.2307/3545686)
- Stubbs WJ, Wilson JB. 2004 Evidence for limiting similarity in a sand dune community. *J. Ecol.* **92**, 557–567. (doi:10.1111/j.0022-0477.2004.00898.x)
- Purschke O, Schmid BC, Sykes MT, Poschlod P, Michalski SG, Durka W, Kühn I, Winter M, Prentice HC. 2013 Contrasting changes in taxonomic, phylogenetic and functional diversity during a long-term succession: insights into assembly processes. *J. Ecol.* **101**, 857–866. (doi:10.1111/1365-2745.12098)
- Webb CO, Ackerly DD, McPeck M, Donoghue M. 2002 Phylogenies and community ecology. *Annu. Rev. Ecol. Syst.* **33**, 475–505. (doi:10.1146/annurev.ecolsys.33.010802.150448)
- Clements FE. 1916 *Plant succession; an analysis of the development of vegetation*. Washington, DC: Carnegie Institution of Washington.
- Connell JH, Slatyer RO. 1977 Mechanisms of succession in natural communities and their role in community stability and organization. *Am. Nat.* **111**, 1119. (doi:10.1086/283241)
- Walker L, Chapin S. 1987 Interactions among processes controlling successional change. *Oikos* **50**, 131–135. (doi:10.2307/3565409)
- Wilson S. 1999 Plant interactions during secondary succession. In *Ecosystems of disturbed ground* (ed. L Walker), pp. 629–650. Amsterdam, The Netherlands: Elsevier.
- Chesson P. 2000 Mechanisms of maintenance of species diversity. *Annu. Rev. Ecol. Syst.* **31**, 343–366. (doi:10.1146/annurev.ecolsys.31.1.343)
- Mayfield M, Levine JM. 2010 Opposing effects of competitive exclusion on the phylogenetic structure of communities. *Ecol. Lett.* **13**, 1085–1093. (doi:10.1111/j.1461-0248.2010.01509.x)
- Kunstler G, Lavergne S, Courbaud B, Thuiller W, Vieilledent G, Zimmermann NE, Kattge J, Coomes DA. 2012 Competitive interactions between forest trees are driven by species' trait hierarchy, not phylogenetic or functional similarity: implications for forest community assembly. *Ecol. Lett.* **15**, 831–840. (doi:10.1111/j.1461-0248.2012.01803.x)
- Bennett JA, Lamb EG, Hall JC, Cardinal-McTeague WM, Cahill JF. 2013 Increased competition does not lead to increased phylogenetic overdispersion in a native grassland. *Ecol. Lett.* **16**, 1168–1176. (doi:10.1111/ele.12153)
- Price JN, Pärtel M. 2013 Can limiting similarity increase invasion resistance? A meta-analysis of experimental studies. *Oikos* **122**, 649–656. (doi:10.1111/j.1600-0706.2012.00121.x)
- Narwani A, Alexandrou MA, Oakley TH, Carroll IT, Cardinale BJ. 2013 Experimental evidence that evolutionary relatedness does not affect the ecological mechanisms of coexistence in freshwater green algae. *Ecol. Lett.* **16**, 1373–1381. (doi:10.1111/ele.12182)
- Verdu M, Pausas JG. 2007 Fire drives phylogenetic clustering in Mediterranean Basin woody plant communities. *J. Ecol.* **95**, 1316–1323. (doi:10.1111/j.1365-2745.2007.01300.x)
- Knapp S, Kühn I, Schweiger O, Klotz S. 2008 Challenging urban species diversity: contrasting phylogenetic patterns across plant functional groups in Germany. *Ecol. Lett.* **11**, 1054–1064. (doi:10.1111/j.1461-0248.2008.01217.x)
- Dinnage R. 2009 Disturbance alters the phylogenetic composition and structure of plant communities in an old field system. *PLoS ONE* **4**, e7071. (doi:10.1371/journal.pone.0007071)
- Helmus MR, Keller WB, Paterson MJ, Yan ND, Cannon CH, Rusak JA. 2010 Communities contain closely related species during ecosystem disturbance. *Ecol. Lett.* **13**, 162–174. (doi:10.1111/j.1461-0248.2009.01411.x)
- Verdu M, Rey PJ, Alcantara JM, Siles G, Valiente-Banuet A. 2009 Phylogenetic signatures of facilitation and competition in successional communities. *J. Ecol.* **97**, 1171–1180. (doi:10.1111/j.1365-2745.2009.01565.x)
- Letcher SG. 2010 Phylogenetic structure of angiosperm communities during tropical forest succession. *Proc. R. Soc. B* **277**, 97–104. (doi:10.1098/rspb.2009.0865)
- Norden N, Letcher SG, Boukili V, Swenson NG, Chazdon R. 2012 Demographic drivers of successional changes in phylogenetic structure across life-history stages in plant communities. *Ecology* **93**(sp8), S70–S82. (doi:10.1890/10-2179.1)
- Johnson EA, Miyanishi K. 2008 Testing the assumptions of chronosequences in succession. *Ecol. Lett.* **11**, 419–431. (doi:10.1111/j.1461-0248.2008.01173.x)
- Grime JP. 2006 Trait convergence and trait divergence in herbaceous plant communities: mechanisms and consequences. *J. Veg. Sci.* **17**, 255–260. (doi:10.1111/j.1654-1103.2006.tb02444.x)
- de Bello F *et al.* 2012 Functional species pool framework to test for biotic effects on community assembly. *Ecology* **93**, 2263–2273. (doi:10.1890/11-1394.1)
- Pärtel M, Szava-Kovats R, Zobel M. 2011 Dark diversity: shedding light on absent species. *Trends Ecol. Evol.* **26**, 124–128. (doi:10.1016/j.tree.2010.12.004)
- Keith DA, Bradstock RA. 1994 Fire and competition in Australian heath: a conceptual model and field investigations. *J. Veg. Sci.* **5**, 347–354. (doi:10.2307/3235858)
- Tozer M, Bradstock R. 2003 Fire-mediated effects of overstorey on plant species diversity and abundance in an eastern Australian heath. *Plant Ecol.* **164**, 213–223. (doi:10.1023/A:1021387210745)
- Keith DA, Holman L, Rodoreda S, Lemmon J, Bedward M. 2007 Plant functional types can predict decade-scale changes in fire-prone vegetation. *J. Ecol.* **95**, 1324–1337. (doi:10.1111/j.1365-2745.2007.01302.x)
- Bhaskar R, Dawson TE, Balvanera P. 2014 Community assembly and functional diversity along succession post-management. *Funct. Ecol.* **28**, 1256–1265. (doi:10.1111/1365-2435.12257)
- Swenson NG *et al.* 2012 Temporal turnover in the composition of tropical tree communities: functional determinism and phylogenetic stochasticity. *Ecology* **93**, 490–499. (doi:10.1890/11-1180.1)
- Hubbell SP. 2001 *The unified neutral theory of biodiversity and biogeography, vol. 17. Monographs in Population Biology*. Princeton, NJ: Princeton University Press.
- Keith DA, Tozer MG. 2012 Vegetation dynamics in coastal heathlands of the Sydney basin. *Proc. Linn. Soc. New South Wales* **134**, B181–B197.
- Kembel SW, Hubbell SP. 2006 The phylogenetic structure of a neotropical forest tree community. *Ecology* **87**(Suppl. 7), S86–S99. (doi:10.1890/0012-9658(2006)87[86:TPSOAN]2.0.CO;2)

39. Pearse WD, Purvis A. 2013 PHYLOGENERATOR: an automated phylogeny generation tool for ecologists. *Methods Ecol. Evol.* **4**, 692–698. (doi:10.1111/2041-210X.12055)
40. Drummond AJ, Rambaut A. 2007 BEAST: Bayesian evolutionary analysis by sampling trees. *BMC Evol. Biol.* **7**, 214. (doi:10.1186/1471-2148-7-214)
41. Westoby M, Falster DS, Moles AT, Vesk PA, Wright IJ. 2002 Plant ecological strategies: some leading dimensions of variation between species. *Annu. Rev. Ecol. Syst.* **33**, 125–159. (doi:10.1146/annurev.ecolsys.33.010802.150452)
42. Adler PB, Salguero-Gómez R, Compagnoni A, Hsu JS, Ray-Mukherjee J, Mbeau-Ache C, Franco M. 2013 Functional traits explain variation in plant life history strategies. *Proc. Natl Acad. Sci. USA* **111**, 740–745. (doi:10.1073/pnas.1315179111)
43. Blomberg SP, Garland T, Ives AR. 2003 Testing for phylogenetic signal in comparative data: behavioral traits are more labile. *Evol. Int. J. Org. Evol.* **57**, 717–745. (doi:10.1111/j.0014-3820.2003.tb00285.x)
44. Maddison WP, Slatkin M. 1991 Null models for the number of evolutionary steps in a character on a phylogenetic tree. *Evolution* **45**, 1184–1197. (doi:10.2307/2409726)
45. Kembel SW, Cowan PD, Helmus MR, Cornwell WK, Morlon H, Ackerly DD, Blomberg SP, Webb CO. 2010 Picante: R tools for integrating phylogenies and ecology. *Bioinformatics* **26**, 1463–1464. (doi:10.1093/bioinformatics/btq166)
46. Letten AD, Cornwell WK. 2014 Trees, branches and (square) roots: why evolutionary relatedness is not linearly related to functional distance. *Methods Ecol. Evol.* (doi:10.1111/2041-210X.12237)
47. Swenson NG, Enquist BJ, Pither J, Thompson J, Zimmerman JK. 2006 The problem and promise of scale dependency in community phylogenetics. *Ecology* **87**, 2418–2424. (doi:10.1890/0012-9658(2006)87[2418:TPAPOS]2.0.CO;2)
48. Nakagawa S, Schielzeth H. 2013 A general and simple method for obtaining  $R^2$  from generalized linear mixed-effects models. *Methods Ecol. Evol.* **4**, 133–142. (doi:10.1111/j.2041-210x.2012.00261.x)
49. Johnson PC. 2014 Extension of Nakagawa & Schielzeth's  $R^2$  GLMM to random slopes models. *Methods Ecol. Evol.* **5**, 944–946. (doi:10.1111/2041-210X.12225)
50. Ricotta C, Burrascano S. 2009 Testing for differences in beta diversity with asymmetric dissimilarities. *Ecol. Indicators* **9**, 719–724. (doi:10.1016/j.ecolind.2008.09.003)
51. Coomes DA, Grubb PJ. 2003 Colonization, tolerance, competition and seed-size variation within functional groups. *Trends Ecol. Evol.* **18**, 283–291. (doi:10.1016/S0169-5347(03)00072-7)
52. Rosenfeld JS. 2002 Functional redundancy in ecology and conservation. *Oikos* **98**, 156–162. (doi:10.1034/j.1600-0706.2002.980116.x)