

RESEARCH ARTICLE

Open Access

Expression of maternally derived *KHDC3*, *NLRP5*, *OOEP* and *TLE6* is associated with oocyte developmental competence in the ovine species

Daniela Bebbere^{*}, Federica Ariu, Luisa Bogliolo, Laura Masala, Ombretta Murrone, Mauro Fattorini, Laura Falchi and Sergio Ledda

Abstract

Background: The sub-cortical maternal complex (SCMC), located in the subcortex of mouse oocytes and preimplantation embryos, is composed of at least four proteins encoded by maternal effect genes: *OOEP*, *NLRP5/MATER*, *TLE6* and *KHDC3/FILIA*. The SCMC assembles during oocyte growth and was seen to be essential for murine zygote progression beyond the first embryonic cell divisions; although roles in chromatin reprogramming and embryonic genome activation were hypothesized, the full range of functions of the complex in preimplantation development remains largely unknown.

Results: Here we report the expression of the SCMC genes in ovine oocytes and pre-implantation embryos, describing for the first time its expression in a large mammalian species.

We report sheep-specific patterns of expression and a relationship with the oocyte developmental potential in terms of delayed degradation of maternal SCMC transcripts in pre-implantation embryos derived from developmentally incompetent oocytes.

In addition, by determining *OOEP* full length cDNA by Rapid Amplification of cDNA Ends (RACE) we identified two different transcript variants (*OOEP1* and *OOEP2*), both expressed in oocytes and early embryos, but with different somatic tissue distributions.

In silico translation showed that 140 aminoacid peptide *OOEP1* shares an identity with orthologous proteins ranging from 95% with the bovine to 45% with mouse. Conversely, *OOEP2* contains a premature termination codon, thus representing an alternative noncoding transcript and supporting the existence of aberrant splicing during ovine oogenesis.

Conclusions: These findings confirm the existence of the SCMC in sheep and its key role for the oocyte developmental potential, deepening our understanding on the molecular differences underlying cytoplasmic vs nuclear maturation of the oocytes.

Describing differences and overlaps in transcriptome composition between model organisms advance our comprehension of the diversity/uniformity between mammalian species during early embryonic development and provide information on genes that play important regulatory roles in fertility in nonmurine models, including the human.

Keywords: Ovine embryo, Oocyte developmental competence, Subcortical Maternal Complex

* Correspondence: dbebbere@uniss.it
Department of Veterinary Medicine, University of Sassari, via Vienna 2, 07100
Sassari, Italy

Background

The subcortical maternal complex (SCMC) is a multi-protein complex located in the sub-cortex of mouse oocytes and pre-implantation embryos [1] composed by at least four proteins: Oocyte Expressed Protein [(OOEP) also known as Factor Located in Oocytes Permitting Embryonic Development (FLOPED)], NLR family, pyrin domain containing 5 [(NLRP5) also known as Maternal Antigen That Embryo Requires (MATER)], Transducin-Like Enhancer of Split 6 (TLE6) and KH domain-containing protein 3 [(KHDC3), also known as FILIA]. The SCMC was seen to be essential for murine zygote progression beyond the first embryonic cell divisions [1], however little is known about the complex in species other than mouse.

The proteins that contribute to the SCMC are encoded by maternal effect genes (MEGs; [1-4]). MEGs code for a special class of maternal transcripts necessarily required for the early cleavage events post fertilization [5,6]. They are expressed exclusively in oocytes and early embryos and are usually degraded by the time of embryonic genome activation (EGA), without compensation by embryonic transcription. Functional studies in mice have indeed demonstrated that the knockout of MEGs results in the inability of the embryo to develop beyond the first cleavage stage [2,7]. This was observed also in *Nlrp5*, *Ooep* and *Khdc3* case: the lack of either gene in mouse oocytes does not affect folliculogenesis, ovulation, or fertilization, but leads to the failure of early embryos to complete cleavage stage development, resulting in a striking female sterile phenotype in these mutant mice [1,2,4,8]. MEGs are involved in folliculogenesis, fertilization and pre-implantation embryo development [5], however their specific functions are often unclear, as in SCMC case.

The molecular mechanisms contributing to oogenesis and to early embryo development are highly conserved. In mammals, maternally-deposited transcripts were seen to be generally more conserved than the newly synthesized by the nascent embryo [9]; comparative genomics studies between mammals and phylogenetically distant chordates such as *X. laevis* and sea squirt *Ciona intestinalis* highlighted the conservation of the majority of the genes expressed in the oocytes [10-12].

Nevertheless, inherent species-specific differences, such as the ovulation quota and number of embryonic cell cycles required for EGA [13], exist between the traditional animal model (polyovulatory mouse) versus monoovulatory species, such as large domestic animals and primates, including humans. Numerous examples suggest that oocyte specific genes may not have identical functions in different species [14-19]. This is possibly related to the fact that several genes specifically expressed by the oocyte are organized in clusters and subject to rapid molecular diversification, often via gene duplication mechanisms

[10,20-22]; this was seen to happen more often for genes that play a role in reproduction processes [23].

The picture of the oocyte transcriptome reveals a delicate balance between novelty and conservation. Comparative studies in nontraditional model systems are valuable to address dissimilarities and overlaps in transcriptome composition between model organisms, and provide information on genes that may play important regulatory roles in fertility in nonmurine models, including the human.

The SCMC appears to be an interesting combination between conservation and novelty: while *NLRP5/MATER* is conserved in several mammalian species, with a moderate grade of sequence homology [2,24-26], *OOEP* e *KHDC3* belong to an eutherian oocyte and embryo-expressed gene family subject to rapid molecular diversifications [27], whose expression analysis in oocytes and embryos of species other than mouse is still lacking.

In light of the above, the goal of the present study was to analyse the expression of the MEGs encoding the SCMC in the ovine species. We have previously studied the expression of *NLRP5* in sheep oocytes and embryos [24]. In the present work, *OOEP*, *KHDC3* and *TLE6* existence was assessed, and the expression pattern during *in vitro* oocyte maturation and embryo development was analysed, together with the potential expression in somatic tissues. A possible association between the expression of the SCMC four components and the oocyte developmental ability was assessed in a model of differential competence consisting of oocytes derived from adult (Ad) or prepubertal (Pr) donors.

Finally, the full length cDNA of *OOEP* was determined by Rapid Amplification of cDNA Ends (RACE).

Methods

All chemicals in this study were purchased from Sigma Chemical CO. (St. Louis, MO, USA) unless otherwise stated.

All experiments involving animals were performed in accordance with the relevant guidelines for the care and use of animals. No animals were specifically generated or sacrificed for this study. Samples were obtained from animals regularly slaughtered in local abattoirs for food production purposes. All procedures were approved by the ethics committee of the University of Sassari, Italy.

Oocyte recovery and in vitro maturation

Oocytes were recovered from the ovaries of prepubertal (30–40 days of age, body weight 6–10 kg) and adult (4–5 years of age, body weight 35–40 kg) Sarda sheep collected at a local slaughterhouse and transported to the laboratory within 1 hr in Dulbecco's phosphate buffered saline (PBS) with antibiotics. After washing in fresh medium, ovaries were sliced using a micro-blade and the follicle content was released in TC-199 medium (with Earle's salts and

bicarbonate) supplemented with 25 mmol HEPES, 0.1 g/L penicillin, 0.1 g/L streptomycin, and 0.1% (w/v) polyvinyl alcohol.

The cumulus oocyte complexes (COCs) showing several intact cumulus cell layers and a compact cytoplasm were selected and matured in vitro in TCM 199 supplemented with 10% heat treated oestrus sheep serum (OSS), 0.1 IU/ml FSH and 0.1 IU/ml LH (Pergonal, Serono Italy) and 100 μ M cysteamine. Groups of 30–35 COCs were cultured for 24 h in a humidified atmosphere of 5% CO₂ in air at 38.5°C in four-well Petri dishes (Nunclon; Nalge Nunc, Roskilde, Denmark) with 600 μ L maturation medium, layered with 300 μ L mineral oil.

In vitro fertilization and embryo development

Frozen–thawed spermatozoa of one single ram of proven fertility (Sarda breed, 4 years old, body weight 55–60 kg), selected by the swim-up technique, were used for all in vitro embryo production experiments. Two straws were thawed per IVF. The semen was washed twice with SOF medium with 2% (v/v) OSS for 20 minutes. Finally, sperm pellet (1×10^6 spermatozoa mL⁻¹) and IVM oocytes were incubated in fertilization medium [Synthetic Oviductal Fluid (SOF) medium with 2% OSS, 1 μ g/mL heparin and 1 μ g/mL hypotaurine] for 22 h at 38.5°C in an atmosphere of 5% CO₂ and 5% O₂ in N₂ in four-well Petri dishes (Nunclon) [28].

Thereafter, presumptive zygotes were transferred and cultured for 8 days in four-well Petri dishes containing SOF + essential and non-essential amino acids at oviductal concentrations [29] +0.4% bovine serum albumin (BSA) under mineral oil, in a maximum humidified atmosphere with 5% CO₂, 5% O₂ and 90% N₂ at 38.5°C [30]. The first cleavage was recorded between 24 and 26 h after fertilization.

Gene expression analysis

Oocyte and embryo collection for gene expression analysis

The RNA samples were isolated from pools of denuded germinal vesicles (GV) and IVM metaphase II (MII) oocytes, and from pools of in vitro matured, fertilized and cultured (IVMFC) embryos at the two- (2C), four- (4C), eight- (8C), and 16-cell (16C) stage. Oocytes and embryos were obtained during several IVM, IVF and IVC sessions.

For a proper collection of oocytes, the assessment of nuclear maturation (GV or MII) was performed by visualization with a stereomicroscope (Olympus ZX40) at 40X magnification. Although the assessment of the meiotic stage cannot be performed with an absolute confidence in absence of staining, according to our experience, ovine oocytes soon after follicular collection are prevalently at the GV stage (98%), while they reach the MII stage and show the presence of the polar body

after 24 h of in vitro culture. Oocytes at the GV and MII stages were denuded with a fine narrow bore pipette and defined as good quality when showing uniform cytoplasm.

Samples were analysed in pools, where every single pool contained 10 oocytes or 10 embryos, in order to obtain enough RNA for the analysis of the 7 transcripts. Five pools were analysed for GV (n = 5 pools) and MII (n = 5 pools) oocytes, while three pools were analysed for embryos at all developmental stages. Each pool was added to 2 μ L RNase free water, snap frozen in liquid nitrogen, and stored at – 80°C until RNA isolation.

The same sampling was performed for oocytes and embryos derived from adult (Ad) and from prepubertal donors (Pr).

As a control for IVF procedure, a pool of embryos in each IVF run was cultured until the blastocyst stage to assess the developmental competence of the fertilized eggs. Only embryos collected from controlled experiments with rates of development to blastocyst stage of >25% (day 7) were used in the analysis.

Ten single blastocysts derived from Ad (n = 5) and Pr (n = 5) oocytes were analysed in order to assess the presence of the transcripts after the activation of the embryo genome.

RNA Isolation and reverse transcription

Total RNA was isolated from the groups of oocytes or embryos with the RNeasy Micro Kit (Qiagen, Hilden, Germany) following manufacturer's instructions. Five pg of luciferase mRNA (Promega) were added to each group prior to RNA extraction to account for RNA loss during the isolation process.

During the procedure, RNA was treated with DNase I to exclude any potential genomic DNA contamination. Isolated RNA was eluted in 15 μ L RNase-free water and 13.5 μ L immediately used for reverse transcription–polymerase chain reaction (RT-PCR).

One point five μ L RNA was analysed with Agilent 2100 Bioanalyzer (Agilent Technologies) with an RNA 6000 Pico kit (Agilent Technologies), specifically designed for analysis of low concentrated RNA samples (analysis range of total RNA: 50–5000 pg/ μ L).

Reverse-transcription was performed in a final volume of 20 μ L, consisting of 50 mM Tris–HCl (pH 8.3), 75 mM KCl, 3 mM MgCl₂, 5 mM DTT, 1 mM dNTPs, 2.5 μ M random hexamer primers, 0.05 μ g oligo (dT)₁₈ primers, 20 U RNase OUT and 100 U SuperScript III RT (all purchased at Invitrogen Corporation, Carlsbad, CA). The reaction tubes were incubated at 25°C for 10 min, then at 42°C for 1 h and finally at 70°C for 15 min to inactivate the reaction. One tube without RNA and one with RNA, but without reverse transcriptase, were analysed as negative controls. To quantify the mRNA recovery rate, 5 pg of luciferase mRNA (not

subjected to RNA isolation) were subjected to cDNA synthesis as well.

Real time-polymerase chain reaction

Primers for all genes studied are listed in Table 1. Relative quantification of transcripts was performed by real-time polymerase chain reaction (RT-PCR) in a 7900HT Fast Real-Time PCR System (Applied Biosystems). The PCR was performed in a 15 μ L reaction volume containing 7.5 μ L 2 \times SYBR Green PCR Master Mix (Applied Biosystems, Foster City, CA), 200 nM of each primer and cDNA equivalent to 0.25 oocytes or embryos.

The PCR protocol consisted in two incubation steps (50°C for 5 min and 95°C for 2 min), followed by 40 cycles of amplification program [95°C for 15 s, gene-specific annealing temperature (see Table 1) for 30 s and 72°C for 30 s], a melting curve program (65–95°C, starting fluorescence acquisition at 65°C and taking measurements at 10-s intervals until the temperature reached 95°C) and finally a cooling step to 4°C. Fluorescence data were acquired during the 72°C extension steps.

To minimise handling variation, all samples to be compared were run on the same plate using a PCR master mix containing all reaction components apart from the sample.

The PCR products were analysed by generating a melting curve to check the specificity and identity of the amplification product. For each primer pair, the efficiency of the PCR reaction was determined by building a standard curve with serial dilutions of a known amount of template, covering at least 3 orders of magnitude, so that the calibration curve's linear interval included the interval above and below the abundance of the targets. Only primers achieving an efficiency of reaction between

90 and 110% (3.6 > slope >3.1) and a coefficient of determination $r^2 > 0.99$ were used for the analysis.

The sizes of the RT-PCR products were further confirmed by gel electrophoresis on a 2% agarose gel stained with Sybr Safe (Invitrogen) and visualised by exposure to blue light. The PCR products were sequenced (Model 3130 xl Genetic Analyzer; Applied Biosystems, Foster City, CA, USA) after purification with MinElute PCR purification kit (Qiagen) and sequence identities were confirmed with BLAST (<http://www.ncbi.nlm.nih.gov/BLAST/>). The relative quantification of the SCMC transcripts was performed after normalization to the number of oocytes and embryos [31-33]. Real-time RT-PCR data are presented as ΔCq , mean \pm SEM. The relative amount of the target mRNA of each specific sample was obtained after subtraction of the calibrator expression level (ΔCT sample = CT sample - CT calibrator), where the calibrator was the sample showing the highest abundance (in most cases a pool of oocytes at the GV stage).

Tissue collection, RNA isolation and reverse transcription

Ovine tissue samples including adult lung, muscle, kidney, cerebellum, testis, ovary, spleen, liver and heart were collected at a local slaughterhouse. All samples were immediately plunged into RNALater (Qiagen, Hilden, Germany) and stored at -80°C until RNA isolation. Total RNA was isolated using TRIzol reagent (Invitrogen, Carlsbad, CA) and treated with DNase I (Invitrogen, Carlsbad, CA) according to manufacturer's protocols. Resulting RNA quantity and purity was spectroscopically checked with NanoDropLite (Fisher Scientific S.A.S., France).

Five hundred ng total RNA from each different tissue were reverse transcribed in a 20 μ L reaction with 50 mM Tris HCl (pH 8.3), 75 mM KCl, 3 mM MgCl₂,

Table 1 Primers used for real-time PCR experiments

Gene	GenBank accession n.	Primers	Annealing temperature	Size (bps)
<i>KHDC3</i>	XM_004011872	F: 5' CAGACCCTGCTTCACGTTCA 3' R: 5' CTCTCAGAGCTTCGCGCC 3'	60°C	150
<i>NLRP5</i>	HM037368.1	F: 5' CAGCCTCCAGGAGTTCCTTG 3' R: 5' GACAGCCTAGGAGGGTTCC 3'	59°C	212
<i>OOEP 1</i>	KF218578	F: 5' ATCCGCTGGTTCCTCTCTG 3' R: 5' GAACACGGTGACTTCGACCA 3'	60°C	149
<i>OOEP 2</i>	KF741040	F: 5' TCCCAAACCTCCTTGCACTG 3' R: 5' CGGCAGGTAGGTGTCTGAAT 3'	60°C	114
<i>TLE6</i>	XM_004009373	F: 5' TACCTGCGCACCTGCCTGCT 3' R: 5' ATTGGTGAAGCCAGCAAAG 3'	58°C	195
<i>ACTB</i>	NM_001009784	F: 5' TTCTGGGTATGGATCCTG 3' R: 5' GGTGATCTCCTCTGCATCC 3'	60°C	162
<i>luciferase</i>	AF093685	F: 5' GCTGGGCGTTAATCAGAGAG 3' R: 5' GTGTCGTCTCTGTCACAGT 3'	58°C	151

5 mM DTT, 1 mM dNTPs, 2.5 μ M Random Hexamer primers, 0.05 μ g oligo (dT)₁₈ primers, 20 U of RNase OUT™ and 100 U of SuperScript™ III RT (all provided by Invitrogen Corporation, Carlsbad, CA). Negative control reactions (without the enzyme) were carried out to confirm the absence of genomic DNA contamination. The reaction tubes were incubated at 25°C for 10 min, at 42°C for 1 h and finally at 70°C for 15 min to inactivate the reaction.

Semi-quantitative PCR to analyse the transcript tissue distribution

Semi-quantitative PCR experiments were carried out to assess the expression of the four genes in the different somatic tissues. First-strand cDNA (~50 ng RNA) was used as a template for PCR amplification using gene-specific primers [see Table 1 – primer sequence, annealing temperature (Ta) and length of amplification products]. The PCR consisted in 5 min at 95°C, followed by 35 cycles of 94°C for 30 sec, Ta for 45 sec and 72°C for 30 sec, and a final extension at 72°C for 10 min. Ovine actin B (*ACTB*) gene was used as a positive control. The PCR products were evaluated by gel electrophoresis on a 2% agarose gel stained with Sybr Safe (Invitrogen) and visualised by exposure to blue light. The approximate size of the amplicons was estimated by comparison with the marker TrackIt ϕ X174RF DNA/HaeIII.

Cloning of ovine *OOEP* cDNA by PCR and RACE

Rapid Amplification of cDNA Ends (RACE) was performed to isolate the *OOEP* full length transcript, using the primer SMART (CACACACAATTAACCCTCACTAAAGG) and an oligo dT primer modified for retro transcription (CCTCTCTATGGGCAGTCGGTGATCCTCAGC(T)₂₁). The product of the reverse-transcription was used as template for the following amplifications: to isolate the 5' region, the primers Fsmart (CACACACAATTAACCC TCACTAAAGG) and Rgsp3OOEP (GAGAAGCAAAT ATCCTTAAATCTCTGCCT) were used, while the primers OOEPforB (CTGTTGCATGAATGTTGTCG) and Roligo CODA (CTCTATGGGCAGTCGGTGA) were employed to isolate the 3' region.

Initially, the primers were designed based on conserved regions of bovine (NM_001077869), human (NM_001080507) and mouse (NM_026480) sequences, since the predicted ovine sequence (XM_004011571), currently found in NCBI website, was not available when the analysis started.

TA Cloning kit (Invitrogen Corporation) was used to clone the fragments into the vector pCR2.1, using the chemocompetent cells TOP10. Several clones containing the fragments were sequenced.

The RACE was performed on total RNA isolated from prepubertal ovaries by the MICROCRIBI service at the Università degli Studi di Padova, Italy.

Statistical analysis

Data were analysed with MINITAB Release 12.1 software package (Minitab Inc., State College, PA, USA). After testing for normality and equal variance using the Kolmogorov–Smirnov and Levene tests, respectively, transcript data were analysed with analysis of variance (ANOVA). Student t-test was conducted to evaluate differences between the expression levels of adult (Ad) vs prepubertal (Pr) oocytes and embryos (within each stage separately). ANOVA was conducted to evaluate differences between different stages of development in each class of embryos (adult and prepubertal separately).

Differences were considered significant when $P < 0.05$.

Results

RNA in oocytes and pre-implantation embryos

RNA samples isolated from pools of 10 oocytes/embryos were analysed with Agilent 2100 Bioanalyzer (Agilent Technologies) with an RNA 6000 Pico kit (Agilent Technologies), specifically designed for analysis of low concentrated RNA samples (analysis range of total RNA: 50–5000 pg/ μ l). Results are described in Table 2. RNA samples isolated from 4-, 8- and 16- cell stage embryos are not included because below the lower limit of analysis (<50 pg/ μ l).

The quantification of the exogenous luciferase mRNA evidenced an RNA recovery rate of $52 \pm 5\%$ (Mean \pm SD).

cDNA cloning of ovine *OOEP*

The full-length cDNA of *OOEP* was cloned by RACE technique in two fragments: the 5' and the 3'. The amplification of the clones containing the 5' fragment returned two products of different length (541 and 722 bps), while the amplification of the clones containing the 3' fragment returned one product of 227 bps. In summary, two transcript variants were isolated: one of 679 bps (*OOEP1*) and one of 860 bps (*OOEP2*) (Figure 1). The sequences were submitted to GenBank (<http://www.ncbi.nlm.nih.gov/genbank/>; accession numbers: KF218578 for *OOEP1* and KF741040 for *OOEP2*).

The alignment of the cDNA sequence with genomic DNA showed that *OOEP1* consists in 3 exons of 203, 181 and 295 bps, spaced by two introns of 141 and 338 bps, while *OOEP2* is composed by 3 exons of 113, 181 and 566 bps, spaced by two introns of 232 and 68 bps (Figure 1).

BLAST analysis of *OOEP1* cDNA confirmed the homology with the orthologous genes present in public databases: ovine sequence shares 95% identity with the bovine (NM_001077869.2; query cover 96%), 81% with the porcine (NM_001198917.1; query cover 56%), 74% with human (NM_001080507.2; query cover 79%) and 72% with the murine (NM_174877; query cover 27%) sequences.

Table 2 Total RNA content of ovine Ad and Pr oocytes and embryos

Stage	Mean concentration (pg/μl)	Mean SE (pg/μl)	Mean RIN value	Isolated RNA (pg) per oocyte or embryo*	Estimated RNA (pg) per oocyte or embryo**
GV Ad	314	41.6	8.3	471	942
GV Pr	170	61	5.9	253	538
MII Ad	95	53	6.7	142	285
MII Pr	80	22	5	119	238
2 cell Ad	58	6	3.5	86	185
2 cell Pr	80	14	4.4	120	240

RNA samples isolated from pools of 10 oocytes/embryos were analysed with Agilent 2100 Bioanalyzer (Agilent Technologies) with an RNA 6000 Pico kit (Agilent Technologies), specifically designed for analysis of low concentrated RNA samples (analysis range of total RNA: 50–5000 pg/μl). RNA samples isolated from 4- 8- and 16- cell stage embryos are not included because below the lower limit of analysis (<50 pg/μl).

*Mean quantity of total RNA isolated per oocyte or embryo.

**Estimated RNA per oocyte or embryo, taking into account the RNA loss during RNA isolation, as resulted from analysis of the exogenous luciferase mRNA.

According to *in silico* translation, *OOEP1* encodes a protein of 140 amino acids, and is homologues to the predicted mRNA sequence available in NCBI website (GenBank accession number XM_004011571).

BLAST analysis with homologous proteins showed that ovine sequence shares 95% identity with the bovine (NP_001071337.1; query cover 100%), 67% with the porcine (NP_001185846; query cover 100%), 64% with human (NP_001073976; query cover 100%) and 45 % with the murine (NP_080756; query cover 92%) sequences (Figure 2).

In *OOEP2* case, it was not possible to identify by *in silico* translation and BLAST analysis any product homologous to the sequences currently available in public databases.

Expression of ovine *NLRP5*, *KHDC3*, *TLE6* and *OOEP* in oocytes and early embryos deriving from adult and prepubertal donors

The existence of *KHDC3*, *TLE6* and *OOEP* mRNAs in sheep was confirmed.

The sequence of *KHDC3* and *TLE6* fragments is shown in Additional file 1, together with the homology with other mammalian species (Figure 3). The analysed sequence within the *KHDC3* gene (150 bps) shares 97% homology with the bovine (XM_002690018.2), 86% with the swine

(XM_003480279.1) and 82% with human (NM_001017361.2) sequences. The analysed sequence within *TLE6* gene (195 bps) shares 98% homology with the bovine (XM_005209025.1), 89% with porcine (XM_003354000.2), 81% with the human (XM_005259645.1) and 78% with murine (NM_053254.2) sequences.

Real time PCR analysis confirmed that *NLRP5*, *KHDC3*, *TLE6*, *OOEP1* and *OOEP2* are expressed in ovine oocytes (GV and MII stage) and in vitro produced early embryos (2-cell, 4-cell, 8-cell, 16-cell stage) derived from adult and prepubertal oocyte donors.

The expression of all analysed mRNAs appear to be maximal at the GV stage and to decrease during embryo preimplantation development (Figure 4). No transcript was detected at the blastocyst stage (Figure 5).

In oocytes and embryos derived from adult animals, all transcripts show a significant decrease in abundance between GV and MII (except for *TLE6*), between MII and 2C embryos and between 8C and 16C embryos (except for *OOEP2*). In oocytes and embryos derived from Pr, the decreases are less sharp and involve different stages of development compared to Ad: i.e. *NLRP5* abundance is stable during Pr oocyte maturation, conversely to what observed in Ad, but shows a decrease between 4C and 8C Pr embryos, which does not occur in Ad. Similar peculiarities may be observed in *KHDC3*,

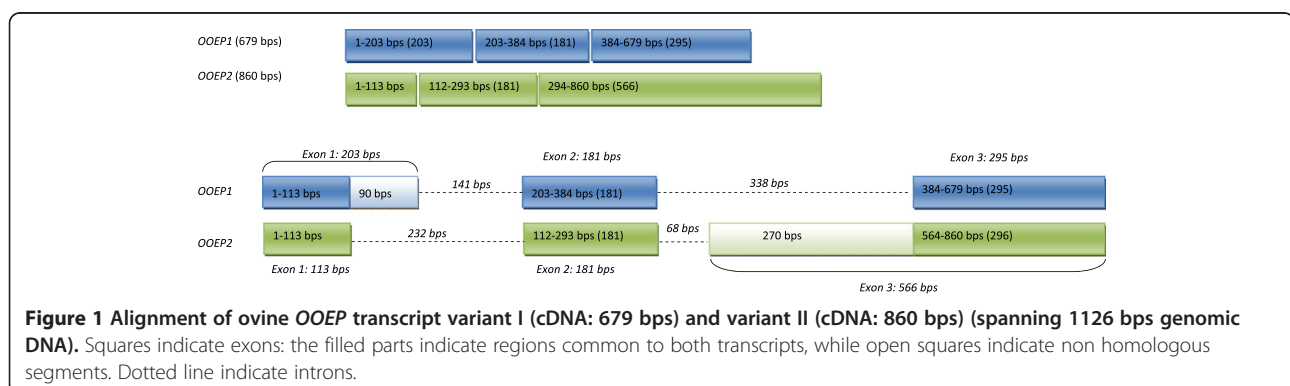


Figure 1 Alignment of ovine *OOEP* transcript variant I (cDNA: 679 bps) and variant II (cDNA: 860 bps) (spanning 1126 bps genomic DNA). Squares indicate exons: the filled parts indicate regions common to both transcripts, while open squares indicate non homologous segments. Dotted line indicate introns.

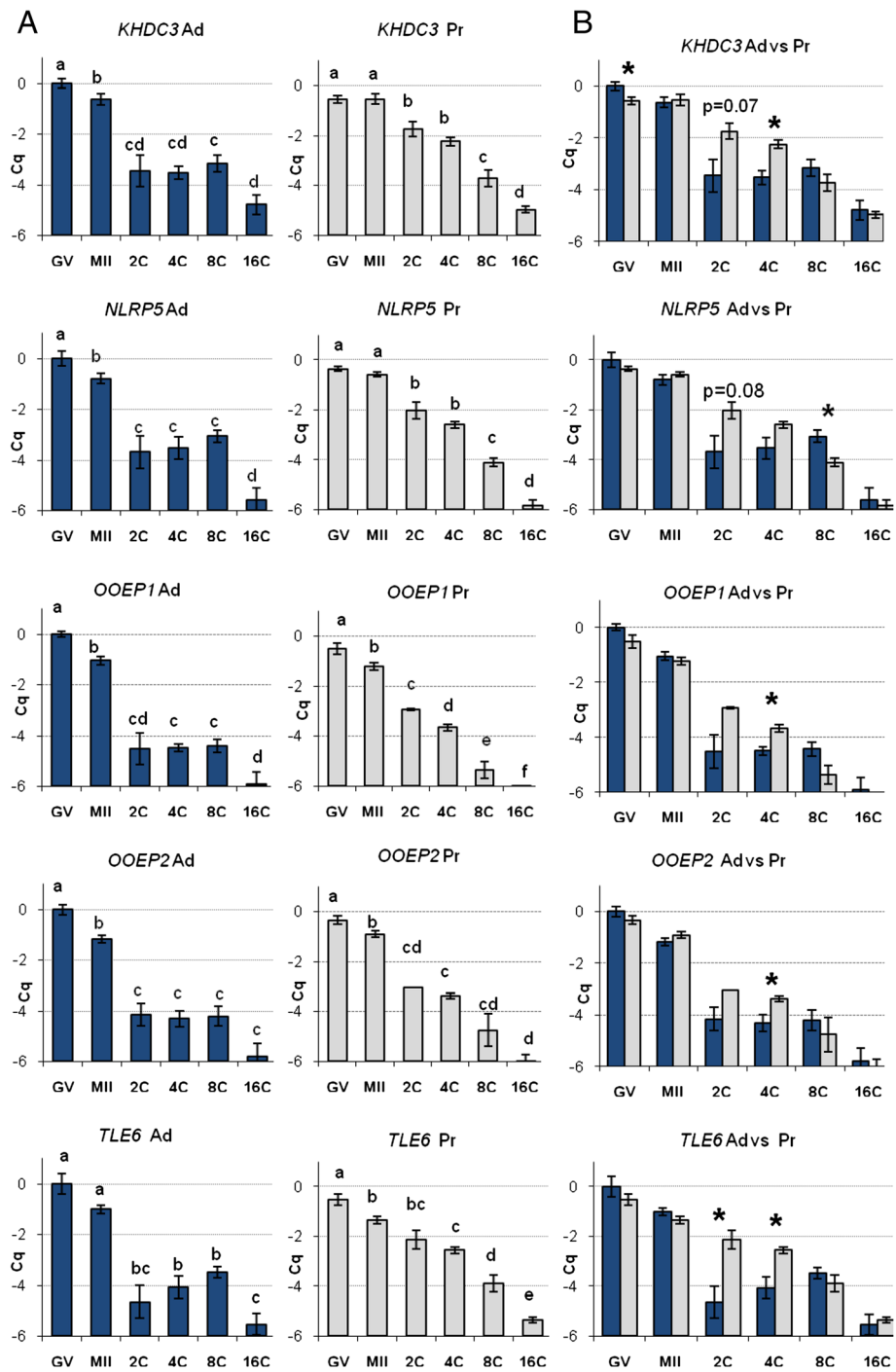


Figure 4 Relative expression of *KHDC3/FILIA*, *NLRP5/MATER*, *OOE1*, *OOE2* and *TLE6* in ovine immature (GV) and IVM MII oocytes (MII), in IVFMC two- (2C), four- (4C), eight- (8C), and 16-cell (16C) embryos derived from adult (Ad) or prepubertal (Pr) donors. Relative abundance values are expressed as ΔCq and show the mean value \pm s.e.m. of five (GV and MII) and three (2C, 4C, 8C and 16C) replicates for each stage (each replicate = pool of 10 oocytes/embryos). **A.** Different letters indicate a significant difference in relative mRNA abundance ($P < 0.05$) among the developmental stages. **B.** * indicates a significant difference in relative mRNA abundance ($P < 0.05$) in pairwise comparisons of oocytes/embryos at the same developmental stage derived from adult or prepubertal donors (Ad vs Pr).

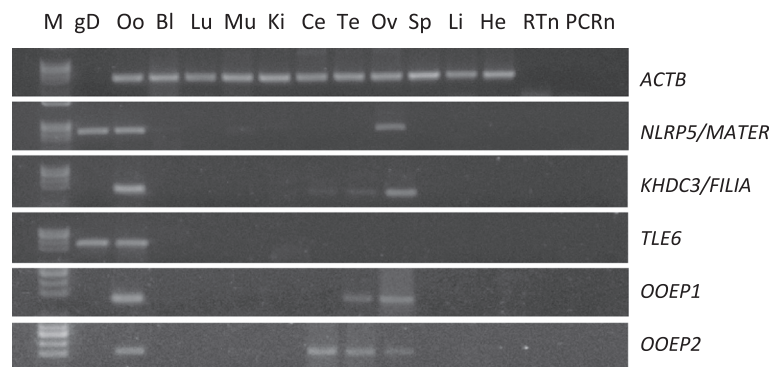


Figure 5 Tissue-specific expression of *NLRP5*, *KHDC3*, *TLE6*, *OOEP1* and *OOEP2*, determined by total RNA reverse transcription and gene specific PCR. Actin B was analysed to control RNA integrity. M = marker TrackIt ϕ X174RF DNA/HaeIII, Lane 1 = genomic DNA; cDNA isolated from oocytes (Oo), blastocysts (Bl), lung (Lu), muscle (Mu), kidney (Ki), cerebellum (Ce), testis (Te) ovary (Ov), spleen (Sp), liver (Li) and heart (He) tissues. RTn = negative control, PCRn = PCR negative control.

subset of molecules sufficient to support development only to some extent [38]. Therefore, Ad and Pr represent gametes of high versus low developmental competence, respectively, and constitute an ideal model for studying the relationship between cytoplasmic and nuclear competence of the oocyte. Interestingly, the expression analysis of the SCMC components in Ad vs Pr model consistently highlighted significant differences around the two-four cell stage of embryo development, with higher abundance in the Pr group (Figure 4). Although the exact function of the SCMC is yet to be clarified, the persistence of the transcripts until the 8–16 cell stage presumes the need of the complex around oocyte to embryo transition and possibly beyond. The observation of similar levels of mRNAs in the Ad and Pr oocytes together with a higher abundance in the Pr 2C-4C embryos suggests a delay in the use of the transcripts by the Preembryos. The decrease in abundance observed in Ad embryos may be due to translation of the transcripts, in case more SCMC is needed, or to their degradation, if synthesis of the complex is no longer necessary. In Pr, however, we observed a delay in the decrease of SCMC component transcripts during early embryo development, just before major genome activation of the nascent embryo. Whether the delay in the Pr embryos causes a shortage of SCMC or a surplus of transcripts, this may be detrimental for the progression of embryo development. The regulation of maternal transcript degradation is indeed as important as the accumulation of these molecules during oocyte growth, and the disruption of any of these mechanisms may severely impair the oocyte developmental competence [39]. Further analysis at protein level will clarify whether the SCMC protein content in oocytes and embryos reflects the observed transcriptional picture.

OOEP/FLOPED and *KHDC3/FILIA* belong to a family of genes with several members, located in a single

syntenic region, that encode structurally related proteins with an atypical RNA-binding N-terminal KH domain, named FILIA N Like, and are specifically expressed in oocytes and/or embryonic stem cells [27]. Compared to other canonical KH domains, a conserved N-terminal extension is identified prior to the KH domain in these proteins, although their function remains unknown. Interestingly, they are absent from fish, bird, and marsupial genomes and thus seem to have first appeared in eutherian mammals, in which they have evolved rapidly.

Two different research groups independently identified murine *Ooep/Floped* as a maternal effect gene, and part of the SCMC [1,3]. Maternally derived OOEP protein was seen to be essential for normal first cleavage and subsequent cell divisions: *Ooep*-null female mice are completely infertile because of a developmental impairment of the preimplantation embryos, that show slower cleavage and asymmetric blastomeres at 2 cell stage and never progress beyond [3]. These results indicate that OOEP protein has an important function around the zygotic stage, when mouse EGA occurs. In sheep, this corresponds to the 4–8 cell stage; as a consequence, the alteration in *OOEP* transcript abundance we observed in ovine embryos at the 2–4 cell stage would likely affect proper development.

We determined the sequence of the full-length *OOEP* cDNA from ovine ovary using rapid amplification of cDNA ends (RACE) and found two transcript variants of different length (679 and 860 bps). The shorter variant, hereafter referred to as *OOEP1* (GenBank accession number: KF218578), was seen to be identical to the predicted full-length cDNA present in the NCBI database, with accession number XM_004011571. According to *in silico* translation, *OOEP1* encodes for a 140 amino acid peptide that contains the atypical FILIA N Like domain, shared by the members of the above mentioned, rapidly evolving family of oocyte specific genes [27]. In

accordance, the homology of the ovine gene with other mammalian species ranges from 95% identity in a 96% query cover with *Bos taurus*, to the 72% of only 27% query cover with *M. Musculus*.

Conversely, the second variant (*OOEP2*; GenBank accession number KF741040) is not homologous to any EST found in the NCBI database, and its potential reading frame is not obvious. The same reading frame for the two variants would be suggested by the exon-intron structure of the two transcripts. As shown in Figure 1, the second exon is identical in two variants, while the first and the third ones differ. The two non-homologous segments of exon 1 and 3 are 90 and 270 bps long, respectively; they display the characteristics of “symmetrical introns” [40] because their length is an exact multiple of 3, so they potentially do not shift the reading frame. Nevertheless, applying to *OOEP2* the same reading frame as *OOEP1*, a premature termination codon (PTC) lying in exon 1 stops its translation after 36 amino acids. The expression analysis of *OOEP* during oocyte maturation and embryo development showed that both transcripts persist with similar decreasing abundance up to the 16 cell stage (Figure 4). However, in the hypothesis of the same reading frame as *OOEP1*, the presence of a PTC would prevent the second variant from being translated.

Alternative splicing is known to produce also splice forms that are not being translated into proteins, but rather play a regulatory role [10,41]. It was suggested that as much as 35% of human alternative isoforms contain PTCs [42]; this widespread “unproductive” alternative splicing implies an important regulatory role, probably a post-transcriptional control of distinct genes [42-44]. A number of these non-protein coding transcripts are clearly processed from pre-mRNAs, and their genomic structure encompasses an exon-intron organization [10]. In this scenario, a regulatory role, possibly gene-specific, may be hypothesized for *OOEP2*.

A picture similar to *OOEP* transcription in sheep was observed for *Khdc3/Filia* in mouse oocytes and embryos: *Khdc3* is transcribed as two types of transcripts with respective lengths of 1.2 k and 1.6 k base pairs that co-exist in oocytes, but only the former transcript is translated into a functional protein with 346 residues [33].

The identification of the alternative noncoding *OOEP* gene transcript, *OOEP2*, in ovine oocytes adds sheep to the list of mammalian species with experimentally confirmed observation of aberrant splicing during oogenesis.

In mouse, maternal *KHDC3* plays a role in maintaining euploidy in cleavage-stage embryogenesis by integrating proper spindle formation; *Khdc3* knock out females are not completely sterile, but their early embryos exhibit significant delays in development in association with lagging chromosomes, micronuclei and aneuploidy [4]. *KHDC3*

was seen to form a stable dimer in solution and to bind polynucleotides and endogenous RNA in vitro [45]. The atypical KH domain in *Khdc3* and *Ooep* gene family binds RNA like other canonical KH-domain proteins, but might have unique consequences that are restricted to oocytes and early embryonic development [45]. Due to their similar expression profiles and their versatile binding with RNA via KH domains, [45] speculated that *KHDC3* and *OOEP* function, either as a homo-dimer or in a multiple-KH manner together in the SCMC in vivo, in RNA degradation during oocyte maturation or early embryogenesis. Our analysis in sheep confirms a similar pattern of expression for the two genes in ovine oocytes and pre-implantation embryos, and the presence of the atypical FILIA N Like domain in the protein deduced from the sequence of ovine *OOEP1* transcript; as a consequence, a similar role may be hypothesized in the ovine species as well.

In human, controversial evidence exists on a potential association between mutations in *KHDC3* and recurrent biparental complete hydatidiform mole, which is the only known pure maternal-effect recessive inherited disorder in humans that results in recurrent pregnancy losses [46]. Mutations in *KHDC3* were found in women with familial diploid biparental hydatidiform moles from four families [47,48] and in two unrelated women with diploid biparental hydatidiform moles but without familial hydatidiform moles [49]. However, discordant evidence seems to exclude mutations in this gene as a cause of non-familial biparental moles [50] and androgenetic moles [51].

The analysis of the SCMC component expression in somatic tissues pointed out additional information on the differences and overlaps between sheep and mouse species. In mouse, all four genes are expressed predominantly in the ovary [1,8,33]. In sheep, all genes are expressed in ovaries as well, but not exclusively: *KHDC3* mRNA was detected also in testis and cerebellum, albeit faintly, while *OOEP* transcript variants interestingly display two different patterns: *OOEP1* was found in ovaries and testis whereas *OOEP2* is expressed also in cerebellum (Figure 5). No transcripts were detected in the other tissues. This is in accordance with the observation of *NLRP5/MATER* expression in mouse and swine [8,25], while bovine *NLRP5* was observed also in testis [52]. No information on the expression of *TLE6*, *KHDC3* and *OOEP* in somatic tissues of species other than mouse is available. Furthermore, while no SCMC transcripts were detected in ovine blastocysts, murine *Khdc3* is expressed also by the embryo at the morula and blastocyst stages [33].

The expression of a MEG in nervous tissue has been previously reported in the case of *Fmn2*, a MEG expressed in the developing mammalian oocyte and required for DNA-spindle positioning during meiosis I [53]. The *Fmn2*

genes in mouse and humans share conservation of sequence and genomic location, and were seen to be expressed throughout the brain and spinal cord [54].

Conclusions

In summary, this work describes for the first time the expression of the SCMC components in oocytes and in vitro produced preimplantation embryos in sheep. It reports the association between the patterns of expression in early embryos and the oocyte developmental potential in terms of delayed degradation of maternal *NLRP5*, *KHDC3*, *OOEP* and *TLE6* transcripts in incompetent oocytes.

By reporting the alternative noncoding *OOEP* gene transcript, *OOEP2*, it adds sheep to the list of mammalian species with experimentally confirmed observation of aberrant splicing during oogenesis.

The analysis of SCMC component expression patterns in a large mammalian species highlighted species-specific features that advance our understanding on the molecular differences underlying cytoplasmic vs nuclear maturation of the oocytes, and subsequent early embryonic development in mammals. Further analysis at protein level will clarify whether the observed transcriptional picture reflects the SCMC protein content in oocytes and embryos.

The comprehension of dissimilarities and overlaps in transcriptome composition between model organisms provides valuable information on genes that may play important regulatory roles in fertility in nonmurine models, including the human.

Additional file

Additional file 1: Fragments of ovine *KHDC3/FILIA* and *TLE6* cDNA sequences. (a) Analysed sequence within the *KHDC3* gene (150 bps). (b) Analysed sequence within *TLE6* gene (195 bps).

Competing interests

The authors declare that they have no competing interests.

Authors' contributions

DB conceived the study, coordinated molecular biology experiments, analysed the data and wrote the manuscript; LM, LF and MF participated in molecular biology experiments and collection of samples; OM, FA and LB performed cell biology experiments; SL participated in design of the study and preparation of the manuscript. All authors read and approved the final manuscript.

Acknowledgements

Authors would like to thank dr. Cristina Fraumene for excellent assistance with Agilent 2100 Bioanalyzer analysis. DB is the recipient of an RTD contract at the University of Sassari, Italy, for the project "Embryo mortality in the ovine species: identification of the factors responsible for pregnancy failures" granted by "P.O.R. SARDEGNA F.S.E. 2007-2013 - Obiettivo competitività regionale e occupazione, Asse IV Capitale umano, Linea di Attività I.3.1".

Funding

This work was supported by Regioni Sardegna e Lombardia [grant number 26096200, project "Ex ovo omnia"] and by Ministero dell'Istruzione, dell'Università e della Ricerca, PRIN 2009 [grant number 2009J3E3CHM_002].

Received: 22 April 2014 Accepted: 11 November 2014
Published online: 25 November 2014

References

1. Li L, Baibakov B, Dean J: A subcortical maternal complex essential for preimplantation mouse embryogenesis. *Dev Cell* 2008, **15**:416-425.
2. Tong ZB, Gold L, Pfeifer KE, Dorward H, Lee E, Bondy CA, Dean J, Nelson LM: *Mater*, a maternal effect gene required for early embryonic development in mice. *Nat Genet* 2000, **26**:267-268.
3. Tashiro F, Kanai-Azuma M, Miyazaki S, Kato M, Tanaka T, Toyoda S, Yamato E, Kawakami H, Miyazaki T, Miyazaki J: *Maternal-effect gene Ces5/Ooep/Moep19/Floped* is essential for oocyte cytoplasmic lattice formation and embryonic development at the maternal-zygotic stage transition. *Genes Cells* 2010, **15**:813-828.
4. Zheng P, Dean J: Role of *Filia*, a maternal effect gene, in maintaining euploidy during cleavage-stage mouse embryogenesis. *Proc Natl Acad Sci U S A* 2009, **106**:7473-7478.
5. Dean J: Oocyte-specific genes regulate follicle formation, fertility and early mouse development. *J Reprod Immunol* 2002, **53**:171-180.
6. Zheng P, Dean J: Oocyte-specific genes affect folliculogenesis, fertilization, and early development. *Semin Reprod Med* 2007, **25**:243-251.
7. Wu X, Viveiros MM, Eppig JJ, Bai Y, Fitzpatrick SL, Matzuk MM: *Zygote arrest 1 (Zar1)* is a novel maternal-effect gene critical for the oocyte-to-embryo transition. *Nat Genet* 2003, **33**:187-191.
8. Tong ZB, Nelson LM: A mouse gene encoding an oocyte antigen associated with autoimmune premature ovarian failure. *Endocrinology* 1999, **140**:3720-3726.
9. Gilbert SF: *Developmental biology*. 6th edition. Sunderland MA: Sinauer Associates; 2000.
10. Evisikov AV, Graber JH, Brockman JM, Hampl A, Holbrook AE, Singh P, Eppig JJ, Solter D, Knowles BB: Cracking the egg: molecular dynamics and evolutionary aspects of the transition from the fully grown oocyte to embryo. *Genes Dev* 2006, **20**:2713-2727.
11. Vallee M, Robert C, Methot S, Palin MF, Sirard MA: Cross-species hybridizations on a multi-species cDNA microarray to identify evolutionarily conserved genes expressed in oocytes. *BMC Genomics* 2006, **7**:113.
12. Vallee M, Aiba K, Piao Y, Palin MF, Ko MS, Sirard MA: Comparative analysis of oocyte transcript profiles reveals a high degree of conservation among species. *Reproduction* 2008, **135**:439-448.
13. Telford NA, Watson AJ, Schultz GA: Transition from maternal to embryonic control in early mammalian development: a comparison of several species. *Mol Reprod Dev* 1999, **26**:90-100.
14. Bettogowda A, Yao J, Sen A, Li Q, Lee KB, Kobayashi Y, Patel OV, Coussens PM, Ireland JJ, Smith GW: *JY-1*, an oocyte-specific gene, regulates granulosa cell function and early embryonic development in cattle. *Proc Natl Acad Sci U S A* 2007, **104**:17602-17607.
15. Hanrahan JP, Gregan SM, Mulsant P, Mullen M, Davis GH, Powell R, Galloway SM: Mutations in the genes for oocyte-derived growth factors GDF9 and BMP15 are associated with both increased ovulation rate and sterility in Cambridge and Belclare sheep (*Ovis aries*). *Biol Reprod* 2004, **70**:900-909.
16. Moore RK, Erickson GF, Shimasaki S: Are BMP-15 and GDF-9 primary determinants of ovulation quota in mammals? *Trends Endocrinol Metab* 2004, **15**:356-361.
17. Galloway SM, McNatty KP, Cambridge LM, Laitinen MP, Juengel JL, Jokiranta TS, McLaren RJ, Luro K, Dodds KG, Montgomery GW, Beattie AE, Davis GH, Ritvos O: Mutations in an oocyte-derived growth factor gene (*BMP15*) cause increased ovulation rate and infertility in a dosage-sensitive manner. *Nat Genet* 2000, **25**:279-283.
18. Galloway SM, Gregan SM, Wilson T, McNatty KP, Juengel JL, Ritvos O, Davis GH: *Bmp15* mutations and ovarian function. *Mol Cell Endocrinol* 2002, **191**:15-18.
19. Yan C, Wang P, DeMayo J, DeMayo FJ, Elvin JA, Carino C, Prasad SV, Skinner SS, Dunbar BS, Dube JL, Celeste AJ, Matzuk MM: Synergistic roles of bone morphogenetic protein 15 and growth differentiation factor 9 in ovarian function. *Mol Endocrinol* 2001, **15**:854-866.
20. Dade S, Callebaut I, Mermillod P, Monget P: Identification of a new expanding family of genes characterized by atypical LRR domains: localization of a cluster preferentially expressed in oocyte. *FEBS Lett* 2003, **555**:533-538.
21. Dade S, Callebaut I, Paillisson A, Bontoux M, Dalbies-Tran R, Monget P: *In silico* identification and structural features of six new genes similar to

- MATER specifically expressed in the oocyte. *Biochem Biophys Res Commun* 2004, **324**:547–553.
22. Paillisson A, Dade S, Callebaut I, Bontoux M, Dalbiès-Tran R, Vaiman D, Monget P: Identification, characterization and metagenome analysis of oocyte-specific genes organized in clusters in the mouse genome. *BMC Genomics* 2005, **6**:76.
 23. Swanson WJ, Vacquier VD: The rapid evolution of reproductive proteins. *Nat Rev Genet* 2002, **3**:137–144.
 24. Bebbere D, Bogliolo L, Ariu F, Fois S, Leoni GG, Tore S, Succu S, Berlinguer F, Naitana S, Ledda S: Expression pattern of zygote arrest 1 (*ZAR1*), maternal antigen that embryo requires (*MATER*), growth differentiation factor 9 (*GDF9*) and bone morphogenetic protein 15 (*BMP15*) genes in ovine oocytes and in vitro-produced preimplantation embryos. *Reprod Fertil Dev* 2008, **20**:908–915.
 25. Pisani LF, Ramelli P, Lazzari B, Braglia S, Cecilian F, Mariani P: Characterization of maternal antigen that embryos require (*MATER/NLRP5*) gene and protein in pig somatic tissues and germ cells. *J Reprod Dev* 2010, **56**:41–48.
 26. Zhang P, Dixon M, Zucchelli M, Hambiliki F, Levkov L, Hovatta O, Kere J: Expression analysis of the NLRP gene family suggests a role in human preimplantation development. *PLoS One* 2008, **3**:e2755.
 27. Pierre A, Gautier M, Callebaut I, Bontoux M, Jeanpierre E, Pontarotti P, Monget P: Atypical structure and phylogenomic evolution of the new eutherian oocyte- and embryo-expressed *KHDC1/DPPA5/ECAT1/OOEP* gene family. *Genomics* 2007, **90**:583–594.
 28. Tervit HR, Whittingham DG, Rowson LE: Successful culture in vitro of sheep and cattle ova. *J Reprod Fertil* 1972, **30**:493–497.
 29. Walker SK, Hill JL, Kleemann DO, Nancarrow CD: Development of ovine embryos in synthetic oviductal fluid containing amino acids at oviductal fluid concentrations. *Biol Reprod* 1996, **55**:703–708.
 30. Bogliolo L, Ariu F, Leoni G, Uccheddu S, Bebbere D: High hydrostatic pressure treatment improves the quality of in vitro-produced ovine blastocysts. *Reprod Fertil Dev* 2011, **23**:809–817.
 31. Eviskov AV, Marín de Eviskova C: Gene expression during the oocyte-to-embryo transition in mammals. *Mol Reprod Dev* 2009, **76**:805–818.
 32. Su YQ, Sugiura K, Woo Y, Wigglesworth K, Kamdar S, Affourtit J, Eppig JJ: Selective degradation of transcripts during meiotic maturation of mouse oocytes. *Dev Biol* 2007, **302**:104–117.
 33. Ohsugi M, Zheng P, Baibakov B, Li L, Dean J: Maternally derived FILIA-MATER complex localizes asymmetrically in cleavage-stage mouse embryos. *Development* 2008, **135**:259–269.
 34. Armstrong DT, Holm P, Irvine B, Petersen BA, Stubbings RB, McLean D, Stevens G, Seamark RF: Pregnancies and live birth from in vitro fertilization of calf oocytes collected by laparoscopic follicular aspiration. *Theriogenology* 1992, **38**:667–678.
 35. Armstrong DT, Kotaras PJ, Earl CR: Advances in production of embryos in vitro from juvenile and prepubertal oocytes from the calf and lamb. *Reprod Fertil Dev* 1997, **9**:333–339.
 36. Ledda S, Bogliolo L, Leoni G, Naitana S: Production and lambing rate of blastocysts derived from in vitro matured oocytes after gonadotrophin treatment of prepubertal ewes. *J Anim Sci* 1999, **77**:2234–2239.
 37. Eppig JJ: Coordination of nuclear and cytoplasmic oocyte maturation in eutherian mammals. *Reprod Fertil Dev* 1996, **8**:485–489.
 38. Leoni GG, Bebbere D, Succu S, Berlinguer F, Mossa F, Galioto M, Bogliolo L, Ledda S, Naitana S: Relations between relative mRNA abundance and developmental competence of ovine oocytes. *Mol Reprod Dev* 2007, **74**:249–257.
 39. Walser CB, Lipschitz HD: Transcript clearance during the maternal-to-zygotic transition. *Curr Opin Genet Dev* 2011, **21**:431–443.
 40. Magen A, Ast G: The importance of being divisible by three in alternative splicing. *Nucleic Acids Res* 2005, **33**:5574–5582.
 41. Maquat LE: Nonsense-mediated mRNA decay: splicing, translation and mRNP dynamics. *Nat Rev Mol Cell Biol* 2004, **5**:89–99.
 42. Lewis BP, Green RE, Brenner SE: Evidence for the widespread coupling of alternative splicing and nonsense-mediated mRNA decay in humans. *Proc Natl Acad Sci U S A* 2003, **100**:189–192.
 43. Lareau LF, Green RE, Bhatnagar RS, Brenner SE: The evolving roles of alternative splicing. *Curr Opin Struct Biol* 2004, **14**:273–282.
 44. Hillman RT, Green RE, Brenner SE: An unappreciated role for RNA surveillance. *Genome Biol* 2004, **5**:R8.
 45. Wang J, Xu M, Zhu K, Li L, Liu X: The N-terminus of FILIA forms an atypical KH domain with a unique extension involved in interaction with RNA. *PLoS One* 2012, **7**:e30209.
 46. Van den Veyver IB, Al-Hussaini TK: Biparental hydatidiform moles: a maternal effect mutation affecting imprinting in the offspring. *Hum Reprod Update* 2006, **12**:233–242.
 47. Parry DA, Logan CV, Hayward BE, Shires M, Landolsi H, Diggle C, Carr I, Rittore C, Touitou I, Philibert L, Fisher RA, Fallahian M, Huntriss JD, Picton HM, Malik S, Taylor GR, Johnson CA, Bonthron DT, Sheridan EG: Mutations causing familial biparental hydatidiform mole implicate *C6orf221* as a possible regulator of genomic imprinting in the human oocyte. *Am J Hum Genet* 2011, **89**:451–458.
 48. Fallahian M, Sebire NJ, Savage PM, Seckl MJ, Fisher RA: Mutations in *NLRP7* and *KHDC3L* confer a complete hydatidiform mole phenotype on digynic triploid conceptions. *Hum Mutat* 2013, **34**:301–308.
 49. Reddy R, Akoury E, Phuong Nguyen NM, Abdul-Rahman OA, Dery C, Gupta N, Daley WP, Ao A, Landolsi H, Ann Fisher R, Touitou I, Slim R: Report of four new patients with protein-truncating mutations in *C6orf221/KHDC3L* and colocalization with *NLRP7*. *Eur J Hum Genet* 2013, **21**:957–964.
 50. Andreassen L, Bolund L, Niemann I, Hansen ES, Sunde L: Mosaic moles and non-familial biparental moles are not caused by mutations in *NLRP7*, *NLRP2* or *C6orf221*. *Mol Hum Reprod* 2012, **18**:593–598.
 51. Manokhina I, Hanna CW, Stephenson MD, McFadden DE, Robinson WP: Maternal *NLRP7* and *C6orf221* variants are not a common risk factor for androgenetic moles, triploidy and recurrent miscarriage. *Mol Hum Reprod* 2013, **19**:539–544.
 52. Penetier S, Uzbekova S, Perreau C, Papillier P, Mermillod P, Dalbiès-Tran R: Spatio-temporal expression of the germ cell marker genes *MATER*, *ZAR1*, *GDF9*, *BMP15*, and *VASA* in adult bovine tissues, oocytes, and preimplantation embryos. *Biol Reprod* 2004, **71**:1359–1366.
 53. Leader B, Lim H, Carabatsos MJ, Harrington A, Ecsedy J, Pellman D, Maas R, Leder P: Formin-2, polyploidy, hypofertility and positioning of the meiotic spindle in mouse oocytes. *Nat Cell Biol* 2002, **4**:921–928.
 54. Leader B, Leder P: Formin-2, a novel formin homology protein of the cappuccino subfamily, is highly expressed in the developing and adult central nervous system. *Mech Dev* 2000, **93**:221–231.

doi:10.1186/s12861-014-0040-y

Cite this article as: Bebbere et al.: Expression of maternally derived *KHDC3*, *NLRP5*, *OOEP* and *TLE6* is associated with oocyte developmental competence in the ovine species. *BMC Developmental Biology* 2014 **14**:40.

Submit your next manuscript to BioMed Central and take full advantage of:

- Convenient online submission
- Thorough peer review
- No space constraints or color figure charges
- Immediate publication on acceptance
- Inclusion in PubMed, CAS, Scopus and Google Scholar
- Research which is freely available for redistribution

Submit your manuscript at
www.biomedcentral.com/submit

