

Cellular and molecular basis of decision-making

Nilay Yapici¹, Manuel Zimmer² & Ana I Domingos^{3,*}

Abstract

People think they are in control of their own decisions: what to eat or drink, whom to marry or pick a fight with, where to live, what to buy. Behavioural economists and neurophysiologists have long studied decision-making behaviours. However, these behaviours have only recently been studied through the light of molecular genetics. Here, we review recent research in mice, *Drosophila melanogaster* and *Caenorhabditis elegans*, that analyses the molecular and cellular mechanisms underlying decision-making. These studies interrogate decision-making about food, sexual behaviour, aggression or foraging strategies, and add molecular and cell biology understanding onto the consilience of brain and decision.

Keywords aggression; decision-making; nutrient sensing; obesity; sexual behaviour

DOI 10.15252/embr.201438993 | Received 30 April 2014 | Revised 19 August 2014 | Accepted 25 August 2014 | Published online 19 September 2014

EMBO Reports (2014) 15: 1023–1035

See the Glossary for abbreviations used in this article.

Introduction

Behavioural economists seek an understanding of the psychological mechanisms underlying decision-making, which could ultimately translate into models that predict market behaviour [1,2]. The idea that decisions are taken through a rational and logical thought process has been put into question by multiple behavioural economic experiments that analyse subjective evaluation during decision-making [3]. For instance, subjects can prefer a more painful stimulus to a less painful one, if the latter lasts longer [4]. In fact, an individual's judgment about the value of stimulus, object or action can change not only by changing wait time, but by changing context, trade-off between intensity and duration, between cost and benefit, or risk and certainty, to name a few factors [4–6]. This rich behavioural phenomenology has been a topic of study in the fields of neuroeconomy, neuromarketing and neurophysiology [7–12].

A market behaviour that has puzzled food industry analysts is that the market share of regular soda more than doubles that of diet soda. This trend persists since artificial sweeteners first appeared in

the market [13,14]. The identification of mammalian sweet taste receptors (TRs) accelerated the identification of non-nutritive-specific TR agonists that mimic the sensory action of sugar in lingual taste buds. However, given the epidemiological trend of increasing obesity, and forceful decisions about restricting sugar consumption, the soda market behaviour indicates that there is an irrational element about how people chose what to consume. Why do people decide to prefer sugary drinks to diet drinks, even if the associated health costs are higher? The answer to this difficult question is multifaceted, and biology may play a predominant role. Recent studies in genetically tractable organisms such as mice and the fruit fly validate the notion that the drive to decide for sugar over non-nutritive sweeteners is controlled by specific populations of neurons. The same concept is illustrated by multiple examples of decisions about sexual mates. Genetically tractable model organisms can be used for probing the role of molecularly identified circuits, neurons and molecules during behavioural decision-making. Indeed, the biology of decision-making behaviours has been recently analysed under a molecular genetics perspective. Here, we review recent studies that use mice, *Drosophila melanogaster* or *Caenorhabditis elegans*, to investigate the molecular and cellular mechanisms underlying decision-making.

Nutrient sensing: neurons that control decisions about food

Studies in mice and fruit flies have identified neurobiological mechanisms explaining sweetener preference. When given the direct choice between a nutritive sweetener containing glucose, a nutritive sugar such as sucrose, and a non-nutritive sweetener such as sucralose, mice prefer the former [15]. This preference is a result of the post-ingestive rewarding effect of sucrose [15]. This effect of sucrose was first described by showing that non-nutritive liquids that are paired to glucose administration either in the intra-gastric tract or in plasma are greatly preferred over liquids that are not paired with nutrients. In addition, rodent studies have shown that sucrose but not sucralose can drive dopamine (DA) release in the midbrain, even in the absence of taste [16,17]. Sweet-blind *Trpm5* knockout mice can still sense the nutrient value of sucrose, which biases decision-making behaviour [16]. These studies indicate that the nutrient value of sucrose is sensed and establishes a preference for nutritive sugars. The combination of sweet taste and an increase of dopamine

1 Laboratory of Neurogenetics and Behavior, The Rockefeller University, New York, NY, USA

2 Research Institute of Molecular Pathology (IMP), Vienna Biocenter (VBC), Vienna, Austria

3 Obesity Laboratory, Gulbenkian Science Institute, Rua Da Quinta Grande, Oeiras, Portugal

*Corresponding author. Tel: +351 214464517; E-mail: dominan@igc.gulbenkian.pt

Glossary

5-HT	serotonin
7,11-HD	7,11-heptacosadiene
7-T	7-tricosene
ARS	area-restricted search
asc	ascaroside
ATF4	activating transcription factor 4
cGMP	cyclic guanosine monophosphate
ChR2	channelrhodopsin
cVA	cis-vaccenyl acetate
DA1	dorsal anterior 1
DA-DL1	dopaminergic dorso lateral 1 cluster
DA	Dopamine
DA-PAM	protocerebral anterior medial cluster
DC1	dorsal cluster 1
DEG/ENaC	degenerin/epithelial Na ⁺ channel
DN1	descending neuron 1
DopEcr	dopamine/ecdysteroid receptor
dsx	doublesex
fru	fruitless
GABA	gamma-aminobutyric acid
GCN2	general control non-derepressing-2
GPCR	G protein-coupled receptor
Gr	gustatory receptor
GRNs	gustatory (taste) receptor neurons
INS-1	insulin-like peptide-1
IR	ionotropic glutamate receptor
LH	lateral hypothalamus
MB	mushroom bodies
MCH	melanin-concentrating hormone
MUPs	mouse urinary proteins
NLP-1	neuropeptide-like protein-1
npr-1	neuropeptide receptor-1
Or67d	olfactory receptor 67d
OSN	olfactory sensory neurons
P1	fruitless (<i>fru</i>)/doublesex (<i>dsx</i>)-coexpressing neuronal cluster
P2b	descending interneuron
PAA	phenylacetic acid
PA	phenylacetaldehyde
PDF	pigment dispersing factor
PER	proboscis extension response
pIP10	descending interneuron
PN	projection neurons
ppk	pickpockets
SEZ	subesophageal zone
SLC5A11	sodium/solute co-transporter-like protein
TG	thoracic ganglia
TGFbeta	transforming growth factor beta
TH-Vum	tyrosine hydroxylase-ventral unpaired median
Tk	tachykinin
TOR	target of rapamycin
TRPC2	transient receptor potential cation channel, subfamily C member 2
Trpm5	transient receptor potential cation channel, subfamily M, member 5
TRs	taste receptors
Va1v	ventral most compartment of ventroanterior 1
VI2a	anterior- and dorsal-most compartment of ventrolateral 2
VMH	ventromedial hypothalamus

accounts for the preference for natural sweeteners as compared to artificial ones [15]. The artificial sweetener sucralose is only preferred to sucrose if supplemented with a proxy for this post-ingestive reward, which was provided by optogenetic activation of DA neurons [15] (Fig 1A–E).

The post-ingestive rewarding effect plays an important role in driving decision-making behaviour during sweetener choice. The elements of the neural circuit that convey the post-ingestive rewarding effect of sucrose have been recently identified—melanin-concentrating hormone (MCH)-expressing neurons in the lateral hypothalamus (LH) influence decision-making behaviour during sweetener choice [18]. MCH neurons in the LH are glucose sensitive and have increased activity when extracellular glucose levels increase [19,20]. Glucose-activated MCH neurons and pancreatic β cells share signal transduction components necessary for glucose sensing, which regulate the glucose excitability of MCH neurons [20]. In addition, MCH neurons send dense projections to reward centres in the striatum and midbrain, where dopaminergic neurons are located [18]. This strong anatomical connection between MCH neurons and reward nuclei, as well as the fact that MCH neurons sense glucose levels, placed these hypothalamic neurons in a good position for being mediators of the rewarding value of sucrose. Indeed, MCH neurons are necessary and sufficient for establishing a preference for sucrose over sucralose during decision-making behaviour [18] (Fig 1D and E). *In vivo* microdialysis in behaving mice shows that MCH neural activation increases dopamine release in the striatum and that the increase of dopamine in response to sucrose is lost after ablation of MCH neurons [18]. Specific ablation of MCH neurons can be achieved in mice using transgenic tools that allow tissue-specific expression of diphtheria toxin receptor exclusively in MCH neurons [21]. Animals with tissue-specific ablation of MCH neurons no longer prefer sucrose to sucralose and show reduced striatal DA release upon sucrose ingestion. Conversely, activation of MCH neurons during intake of the artificial sweetener sucralose increases striatal DA levels and inverts the normal sweetener preference [18]. The specific activation of these neurons during sucralose ingestion can be achieved in mice using channelrhodopsin, a light-activated cation channel that allows remote activation of genetically identified populations of neurons during behaviour [18,22]. However, optogenetic stimulation of MCH neurons alone is not sufficient to alter behaviour in the absence of taste [18], suggesting that these neurons are components of a reward-encoding network that integrates information from multiple sources, including the nutrients, lingual taste buds and, possibly, other sites of glucose sensing, such as the gut. Consistent with this possibility, viral tracing from lingual taste buds shows that MCH neurons are part of a circuit processing gustatory information [23]. This is also consistent with the requirement for both sweet taste and optogenetic activation of MCH neurons to drive reward. The nutrient-sensing role of MCH neurons contrasts with the role of DA neurons or serotonergic neurons, which upon optogenetic stimulation have been shown to be rewarding when paired to water [15,24] (Fig 1A–E).

A synergy between taste and the post-ingestive rewarding effect would explain why sucrose and other fructose/glucose disaccharides, which are more potent stimulators of sweet taste receptors than glucose alone, are generally preferred to glucose alone [25,26]. This synergy would also explain why optogenetic gain of function of MCH neurons leads to an inversion of preference, rather than an isopreference, which could perhaps have been achieved by decreasing the concentration of sucralose. Likewise, the loss of function of MCH neurons leads to isopreference, but this might be biased towards sucralose by increasing its concentration. Further studies will be necessary to elucidate the neural mechanisms by which MCH

neurons regulate striatal DA release during sweetener intake (Sidebar A). The delineation of this decision-making neural circuit may also provide a basis for understanding how metabolic state modulates the rewarding value of sugar [15]. The adipostat hormone leptin regulates the reward value of sucrose, but this is unlikely to be a result of a direct effect on MCH neurons, as they do not appear to express the leptin receptor [27] (Sidebar A). However, leptin has been recently reported to act presynaptically to suppress excitatory synaptic input onto midbrain DA neurons [28] (Sidebar A).

Nutrient sensing that guides decision-making about sweetener ingestion has also been studied in *Drosophila* and found to be regulated at the central nervous system level. Brain nutrient sensing may therefore represent an evolutionary adaptation to avoid fasting, by expediting decisions about which foods to consume. We speculate that nutrient sensing in the brain could be ancient in the evolutionary scale, whereas peripheral detection would be a relatively modern adaptation.

Flies regulate food intake to balance metabolic homeostasis and maintain a stable body weight. Feeding decisions are controlled by at least three factors: taste sensory cues, metabolic status and nutrient sensing (Fig 1F). Similar to humans and mice, flies like sugars and avoid bitter compounds [29]. After finding food, flies determine the palatability of the food source and decide whether to sample or not. Food palatability is sensed through gustatory (taste) receptor neurons (GRNs) that are distributed across the proboscis (mouth) and legs [30,31]. GRNs express a set of *gustatory receptor (Gr)* genes, which belong to a highly divergent family of seven transmembrane G protein-coupled receptors [32–34]. *Gr*s that are required for sweet and bitter compound sensation have been identified by behavioural and electrophysiological analysis [35–39]. In addition to *Gr*s, GRNs have been recently shown to express *ionotropic glutamate receptor (IR)* genes [40,41] and the degenerin/epithelial Na⁺ channel (DEG/ENaC)-encoding genes, *pickpockets (ppk)* [42,43]. The fly taste system also detects water and other macronutrients—such as amino acids and fatty acids [35,43–45] (Sidebar A).

The metabolic status of the fly regulates its responsiveness to taste stimuli. Flies that have been food-deprived are more likely to respond to sugar stimulus, compared to flies that have recently fed [46]. DA signalling regulates sensitivity to sugar stimulus by enhancing sugar-evoked responses of GRNs. This effect of DA is abolished after *Dopamine/Ecdysteroid receptor (DopEcr)* knock-down in sugar-sensitive GRNs [47]. However, the source of DA release that primes GRNs to sugar is unknown. A group of DA neurons have been shown to regulate the sucrose-induced proboscis extension response (PER) [48]. One of these neurons, TH-VUM (Fig 1G), is located in the ventromedial region of the fly brain with extensive branching in the primary taste centre, the subesophageal zone (SEZ). The TH-VUM neuron is not directly involved in taste perception and may decrease the threshold for sugar stimulation when flies are food-deprived, therefore regulating action selection mechanisms for PER [48].

As mice, flies choose food based on nutritional value, not only taste sensory input. For example, taste-deficient flies prefer nutritive sweeteners to non-nutritive sweeteners after food deprivation [49,50]. This preference is independent of taste perception and is based on post-ingestive content (Fig 1F). A sodium/solute co-transporter-like protein (*SLCSA11* or *cupcake*) was identified in a genetic screen for flies that fail to perform the correct nutritional preference [51]. *cupcake* is structurally related to mammalian sodium/glucose

co-transporters that regulate sugar absorption in the digestive tract. Unlike the mammalian orthologs, *cupcake* is expressed in 10–13 pairs of central brain neurons located in the ellipsoid body (Fig 1G). *cupcake* mutant flies or flies with inactive cupcake neurons fail to discriminate nutritive sugar D-glucose over non-nutritive sugar L-glucose [51]. How cupcake neurons regulate preference for nutritive sweeteners is not clear, and two alternative mechanisms have been proposed. Cupcake-expressing neurons may be nutrient sensors for nutritive sugars that stimulate their consumption upon prandial rise in the haemolymph nutrient levels. Alternatively, cupcake neurons might monitor the internal metabolic status of flies and change sugar preference towards nutritive sugars upon fasting. Either of these hypotheses requires validation. One critical experiment would be to measure the activity of cupcake neurons in response to nutritive and non-nutritive sweeteners, in fed versus food-deprived flies. In addition to cupcake neurons, another population of neurons expressing *Gr43a* has been identified as a brain nutrient sensor for fructose [52]. These neurons are located in the lateral protocerebrum (Fig 1G) and can detect the rise in circulating fructose as a post-ingestive signal for sugar intake. Consistent with this, *Gr43a* mutants lose preference to sorbitol—a tasteless nutritive sugar alcohol—over water [52]. Activation of *Gr43a* neurons in food-deprived flies facilitates feeding, whereas in fed flies it causes feeding termination [52]. The opposing effects of *Gr43a* neurons in fed and food-deprived flies suggest that these neurons regulate food consumption depending on the internal state of the animal. The factors that regulate the state dependency remain unknown and may involve a crosstalk between *Gr43a* neurons and cupcake neurons. Anatomically, the processes of these neurons do not overlap, but they are in close proximity. It is possible that both of these neural populations communicate with the same, still unknown, central reinforcement system that regulates feeding decisions in flies (Sidebar A). In mice, the post-ingestive effect of sugar is regulated by DA neurons, as discussed above [15]. Given that nutritive sugar preference is conserved among flies and mice, it would not be surprising whether distinct populations of DA neurons are also involved in the reinforcement systems for nutritive sugar preference in flies. In agreement with this hypothesis, it has been shown that the rewarding effects of nutritive sugars are required for flies to form stable appetitive olfactory memories in an odour-taste association task [53,54]. A group of DA neurons in the DA-PAM is required for long-term appetitive memory formation, by encoding the reward value of sugar stimulus [55]. DA-PAM neurons receive inputs from octopaminergic (OA) neurons that are located in the SEZ and have output trajectories in the medial lobes of mushroom bodies (MB), the olfactory processing centre in the fly brain. It has been postulated that DA-PAM neurons integrate the gustatory reward and internal state information and convey reinforcement signals to MBs, where appetitive olfactory memories are likely to be formed and stored [55]. In addition to long-term appetitive memory formation, flies also show short-term appetitive olfactory memories that are reinforced by the action of OA signalling on a discrete subset of DA neurons that project to distinct MB lobes [56]. The neurophysiological properties and molecular mechanisms that encode short-term and long-term appetitive olfactory memories in the MBs are not clearly understood. The identification of smaller populations of DA neurons in MBs with distinct molecular identities and functions will provide valuable information to understanding short-term and

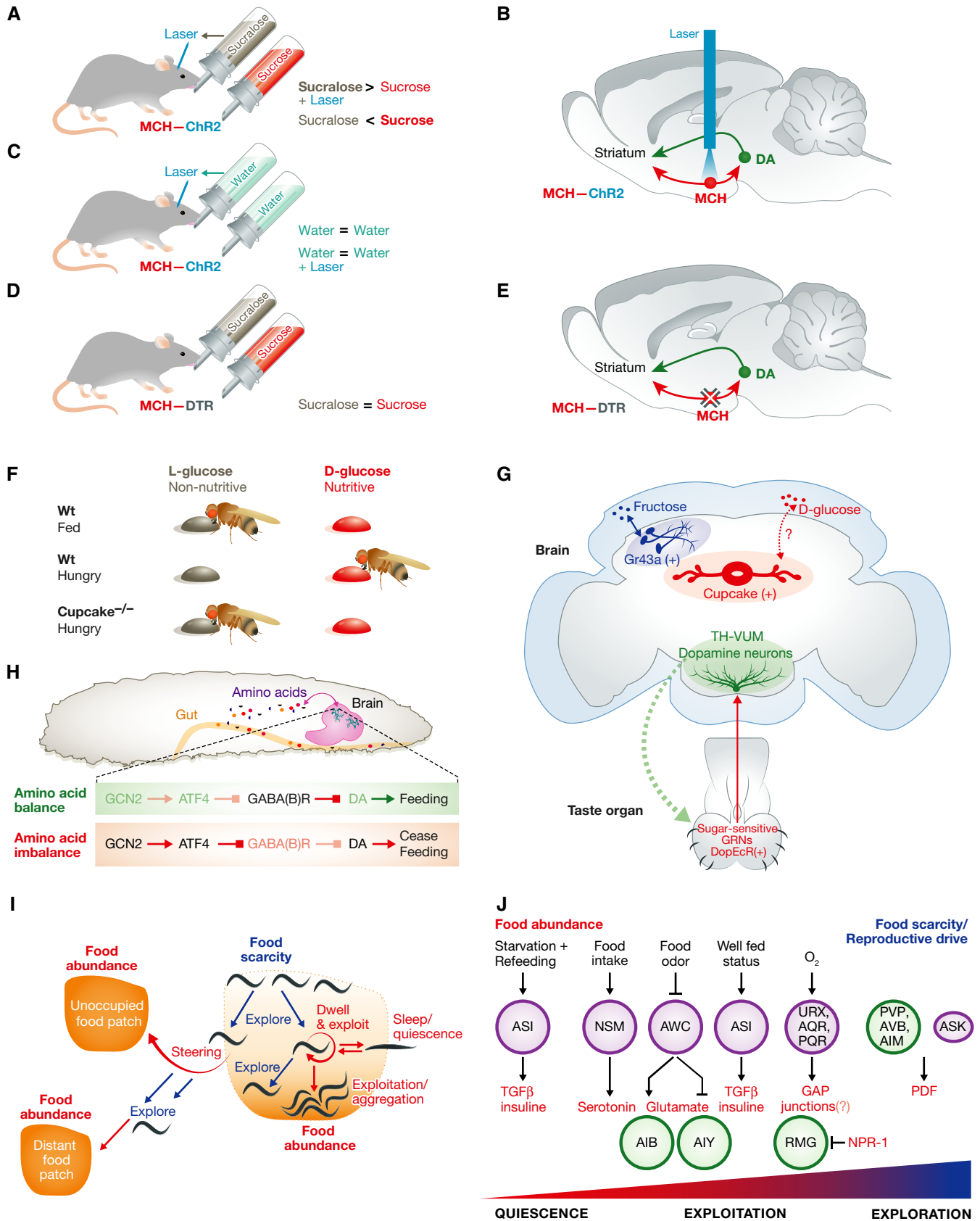


Figure 1. Nutrient sensing: controlling decisions about food.

(A, B) Optogenetic stimulation of glucose-sensitive MCH neurons during sucralose intake inverts preference for sucrose. (C) Optogenetic stimulation of MCH neurons during water intake does not create a bias towards laser side; thus, MCH neurons are not rewarding in the absence of taste. (D, E) Loss of glucose-sensitive MCH neurons decreases DA induction during sucrose intake and leads to isopreference between sucrose and sucralose. (F) Wild-type flies prefer nutritive sugar D-glucose to L-glucose when they are hungry. In cupcake mutants, the preference towards D-glucose is disrupted. (G) Representation of neurons that regulate proboscis extension response (PER) and nutritive sweetener preference. (H) Essential amino acid detection and food intake regulation in *Drosophila* larvae. During amino acid balance, the GNC2 pathway is inactive and GABA signalling inhibits DA release. When essential amino acid levels are perturbed, GCN2 is activated and inhibits GABA signalling, leading to DA release. (I) Food availability and nutritional status mediate foraging decisions in *Caenorhabditis elegans*. Low food abundance or low nutritional value promotes roaming across the food patch. In the presence of rich food supply, animals switch more often to local dwelling to exploit the food source. Severe starvation history causes prolonged sleep-like quiescence in this situation. If not successful in finding high-quality food locally, animals eventually take risk and decide to leave the patch to navigate directly to new food sources. Explorative deviations from their path serve to locate more distant eventually better food sources. (J) Neurons and transmitter pathways that act along an arousal axis, which ranges from sleep-like quiescence, via exploitation by dwelling and feeding, to explorative behaviours like roaming and patch leaving. Purple circles indicate sensory neurons; green circles indicate interneurons. See Glossary for definitions.

long-term appetitive olfactory memory formation and how nutrient rewards affect these processes. Thus, the fly system also provides an attractive model to characterize how food decisions are influenced by learning and memory mechanisms.

Sugars are the main food source for flies. However, their preference for sugars is altered when they are deprived of other nutrients such as amino acids (Sidebar A). A group of genes that regulate amino acid preference have been identified. These include the regulators of TOR pathway, such as *tuberous sclerosis complex (TSC1&2)* and *S6-kinase* [57,58]. Although the molecular identities of these pathways are known, the underlying neural circuitry is yet to be found. A small population of DA neurons in the larval brain has recently been characterized as a nutrient sensor for essential amino acids [59]. Larvae refuse food depleted of certain essential amino acids, a response that is regulated by *GCN2* kinase-dependent GABA signalling in DA neurons (Fig 1H). *Ex vivo* calcium imaging of a small population of DA neurons (DA-DL1) indicates that they respond to the decrease in essential amino acid concentration in solution. This response is dependent on *GCN2* or *ATF4*, a downstream molecule in *GCN2* signalling [59]. How *GCN2* signalling mediates the sensing of rapid fluctuations in amino acid concentrations and affects DA-DL1 neural activity remains unknown. DA-DL1 neurons are also present in the adult fly brain. Calcium imaging and behavioural experiments will show whether these neurons maintain their amino acid sensing ability and regulate amino acid preference also in adult flies. How flies process taste information, metabolic status and nutrient value to select appropriate food sources have only now began to be understood. The identification of TH-VUM, Gr43a, cupcake and DA-DL1 neurons is an entry point into the circuits that regulate food decisions. Genetic screens will identify other components of nutrient-sensing circuits and help understand how animals combine external sensory cues with internal metabolic status to make value-based feeding decisions.

Another genetically tractable organism that is amenable for high-throughput genetic screens is the nematode *C. elegans*. In the laboratory, worms are constitutively fed on *E. coli* feeder lawns. Food is detected by the smell and texture of bacteria [60,61], as well as by sensing indicative factors of microbial metabolism, such as intermediate oxygen concentrations [62]. *Caenorhabditis elegans* sensory neurons connect to a network of interneurons, which in turn process and convey information to head and body motor neurons. In worms, decision-making behaviours follow evaluation of nutritional status and the presence or quality of food. Worms choose the optimal locomotion strategy, which ranges from sleep-like quiescence and local exploitation to long-distance travel.

When crawling on a bacterial lawn, *C. elegans* locomotion switches between roaming and dwelling phases [63]. Roaming is fast forward locomotion achieved by undulatory propulsion. On food, roaming periods last on average 1–2 min and they intersperse the longer-lasting dwelling periods (5–10 min) [64]. Dwelling ensures maximal food intake, whereas roaming allows to explore new resources, with the risk of missing the opportunity to fully exploit the local food (Fig 1I). The nutritious value of the food source influences roaming and dwelling; a high nutritious value favours dwelling whereas low food quality favours roaming [63,65]. A short 30-min starvation history promotes a strong dwelling response when animals re-enter a bacterial food lawn. This is mediated by serotonergic food-sensing neurons and dopaminergic mechanosensory neurons [61,65]. After prolonged starvation, sudden food encounter triggers sleep-like quiescence, an effect that depends on TGFbeta and insulin signalling [66]. Several genetic studies showed that an interconnected network of molecular pathways and sensory and interneurons regulate the switch between roaming and dwelling (Fig 1J). cGMP and serotonin (5-HT) signalling promotes dwelling [64,67]. Conversely, signalling via insulin, TGFbeta and the neuropeptide PDF signalling promote roaming [64,65]. Serotonergic, NSM neurons project nerve endings to the food processing pharynx and monitor food intake. They are active during dwelling periods and secrete 5-HT to inhibit roaming [64]. Serotonergic neurons likely act in concert with AWC class and other food chemosensory neurons [65,67]. They converge on interneuron circuits and most studies mentioned here identified a cell class termed AIY that receives input from both 5-HT and PDF [64,65]. PDF is a potent arousal factor that can suppress sleep-like behaviour in *C. elegans* [68]. It is secreted by interneurons as well as by pheromone-sensing ASK and ASI chemosensory neurons [64,68,69]. PDF receptors are expressed by interneurons as well as by sensory neurons, including mechanosensors and oxygen sensors [64,68,69]. PDF-dependent roaming and arousal are antagonized by signalling through a neuropeptide Y receptor (NPYR) homologue, which is encoded by the *npr-1* gene [68]. In *npr-1* loss-of-function mutants, as well as in wild isolates of *C. elegans* (such as Hawaiian) that bear a polymorphism with a low activity allele of *npr-1*, roaming depends on sensing high environmental oxygen concentrations [70]. These animals initiate dwelling mostly at the border of bacterial lawns, where bacterial density is highest and oxygen concentrations are low [62]. When the worm population density is high at these sites, *npr-1* animals or wild isolates perform a remarkable switch towards social aggregation behaviour. Here, animals actively clump together to form tight feeding aggregates [71]. The action of *npr-1*,

oxygen-regulated roaming and social aggregation requires oxygen sensory neurons that regulate the activity of RMG class interneurons, which represent a gap junction hub in the connectome [72,73]. 5-HT- and PDF-secreting neurons and cognate-receptor-expressing neurons do not all form direct chemical synapses with each other. Therefore, the factors described likely act in an endocrine fashion [64]. The individual contributions of each neuron in this distributed regulatory network remain to be elucidated.

Well-fed *C. elegans* hermaphrodites mostly remain in the local food patch and rarely leave. This strong preference to stay at the local food patch depends on *npr-1* signalling. The *npr-1* signalling pathway interacts with a tyramine-signalling pathway [74,75]—tyramine, with octopamine, has been discussed as being analogous to the vertebrate adrenergic/noradrenergic system [76]. The history of caloric restriction, as well as the quality of food present at the local patch, can promote leaving behaviour [63].

Upon removal from food, *C. elegans* enters a locomotor state termed area-restricted search (ARS) that is distinct from either roaming or dwelling behaviours. ARS is characterized by regular forward undulatory crawling, which is frequently interspersed by backward directed motions and reorientation manoeuvres, called reversals and turns, respectively. The net effect of ARS is locomotion trajectories that cover a larger local area [77–79]. The frequency of intermittent reversals versus turns gradually declines with increasing time off food, leading to a switch from ARS to long-distance travel [78]. AWC class food sensory neurons are inactive in the presence of food odours and exhibit prolonged rebound activity upon odour removal [80]. AWC neurons release glutamate and signal to interneuron classes AIB and AIY, whose activity promotes or inhibits reversal and turn frequencies respectively [77,78,80]. The prolonged activity dynamics in AWC are negatively counter-balanced by a peptidergic feedback loop: AWC secretes NLP-1 neuropeptides that act on AIA neurons, which in turn secrete an insulin ligand (INS-1) that acts directly on AWC. In the absence of this regulatory loop, ARS is aberrantly enhanced [81].

Neurons that decide who to love or when to fight

Pheromone perception guides sexual decision-making in mice, flies and worms. Each of these model organisms is able to perceive pheromones through pheromone receptors expressed in peripheral sensory neurons. Pheromones are a discrete class of chemical cues that signal the sex of an individual and promote coordinated motor programmes and physiological changes that

are essential for breeding among conspecifics. In mice and flies, these pheromone cues also serve to signal social status and aggressive behaviours.

Mice rely on pheromone detection for sexual mate choice and territorial aggression behaviour. Specifically, TRPC2 is a putative ion channel of the transient receptor potential family, which is expressed in the vomeronasal organ and dictates the choice of sexual partners. Male mice deficient in TRPC2 expression fail to display male–male aggression and decide to initiate sexual and courtship behaviours towards both males and females [82]. Male mice behave differently when encountering a male or a female mouse: male–male interactions usually lead to aggression, whereas male–female interactions trigger courtship behaviour. Choosing one behaviour over the other is regulated not just by peripheral pheromone sensors, but also by CNS neurons. A recent study identified progesterone-receptor-expressing neurons in the ventromedial hypothalamus that are required for sexual behaviour and male aggression. These findings provide insight into how neural circuits in the brain control sexually dimorphic behaviours in vertebrates [83]. In this regard, the fly model pioneered the discovery of a plethora of neurons in the central nervous system that control sexual decision-making (Fig 2C). Moreover, flies evolved contact-based pheromone detection through direct activation of taste neurons, a phenomenon that has not yet been found in mice (Fig 2C). In this regard, it has been speculated that mouse major urinary proteins (MUPs) could be contact pheromones, although urine has been mostly used as a stimulus of the vomeronasal organ, which detects volatile pheromones.

Like mice, peer recognition is important for flies to choose appropriate behavioural actions. For example, when encountering another fly, a male receives visual, olfactory and taste sensory cues that he needs to evaluate in order to decide on an appropriate behavioural response (Fig 2C). If the signals indicate a potential mate, a male fly will initiate the courtship ritual by chasing the female and singing a species-specific courtship song [84]. In contrast, if the signals indicate a potential rival, the male fly will display stereotypic aggressive behaviours [85,86].

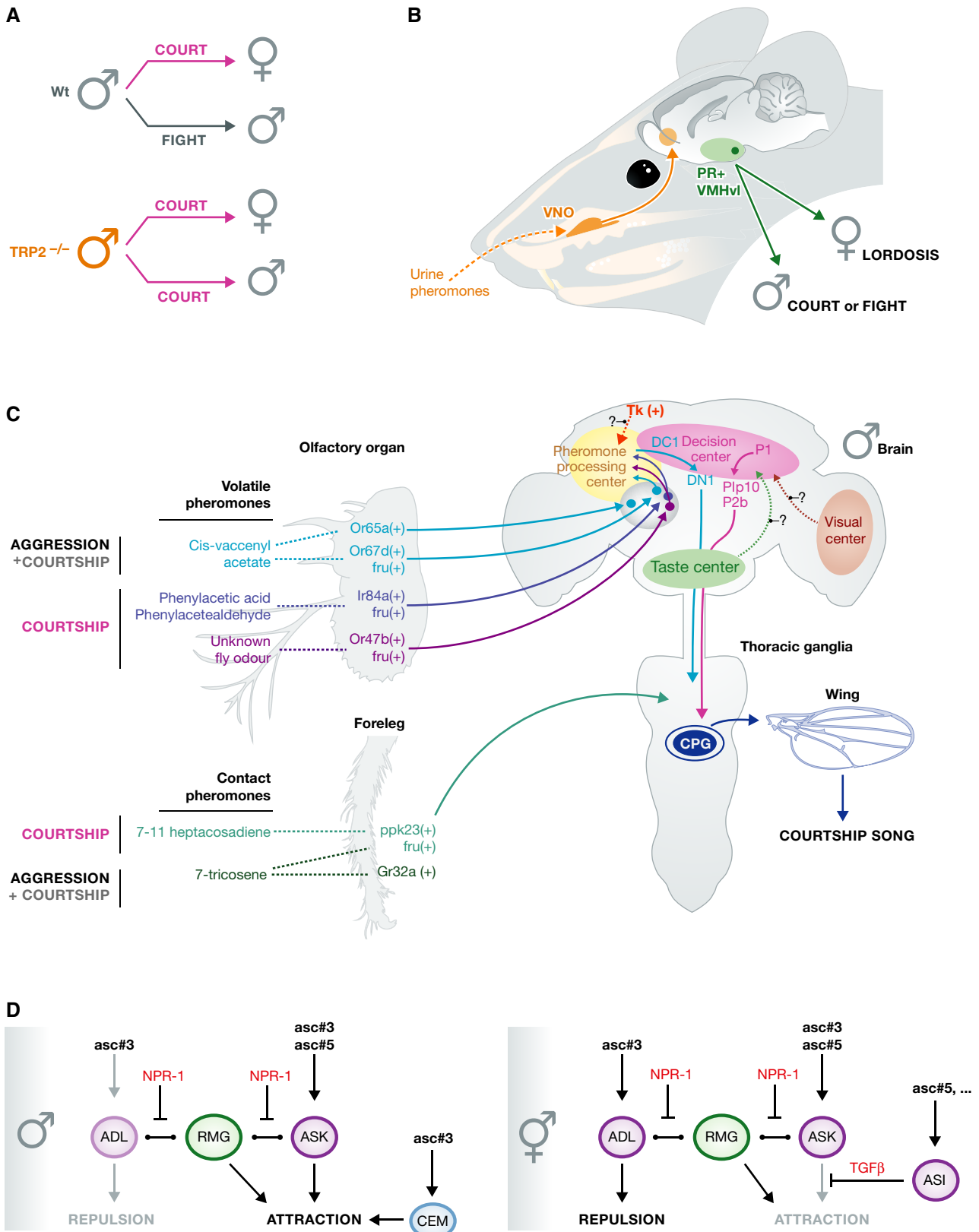
Two transcription factors—*fruitless* (*fru*) and *doublesex* (*dsx*)—are the main regulators of male fly courtship behaviour, both of which are required for the wiring of the courtship circuitry [87,88]. The classic *fru* mutants court males and females indiscriminately and fail to copulate with females [84]. Through molecular and genetic analysis, the male-specific isoform of Fru protein, FruM, was found to be necessary and sufficient to hardwire the circuitry that produces male courtship behaviour [89,90]. FruM is present in

Figure 2. Perceptual decisions: controlling who to love or when to fight.

(A, B) Mice rely on pheromone detection by neurons in the vomeronasal organ (VNO) for sexual mate choice and aggression behaviour. Male–male interactions usually lead to aggression, whereas male–female interactions trigger courtship behaviour. Male mice deficient in TRPC2 expression fail to display male–male aggression and decide to initiate sexual and courtship behaviours towards both males and females. CNS neurons also control these behaviours; choosing one behaviour over the other is controlled by progesterone-receptor-expressing neurons in the ventrolateral aspect of the ventromedial hypothalamus (PR⁺ VMHvl). In males, PR⁺ VMHvl neurons mediate courtship and aggression, whereas in females these neurons mediate lordosis. (C) *Drosophila* male courtship and aggression circuits. Flies rely on pheromone detection in sensory neurons in the antennae and legs to discriminate sexual partners and rivals. Multiple pheromones and correspondent receptors have been identified, as well CNS neurons that regulate courtship and aggression. (D) Hypothetical model of how dimorphic circuits control mate search behaviour in *Caenorhabditis elegans* males compared to hermaphrodites. Ascarosides (*asc*) activate sensory neurons common to males and hermaphrodites (purple), as well as male-specific sensory neurons (cyan). RMG interneurons represent a GAP junction hub, and NPR-1 possibly inhibits GAP junction signalling, which balances repulsive and attractive behavioural outputs to downstream motor circuits (not shown). In hermaphrodites, the modulation of sensory neurons by TGFβ and unknown signals shifts the balance towards repulsion. Note that this model only includes a subset from a diverse ascaroside library, the complexity of which is not yet fully functionally characterized. See Glossary for definitions.

approximately 2,000 neurons that are distributed among sexually dimorphic sensory, central and motor neuron clusters [91–93]. When all FruM neurons are inhibited, males do not court [92].

Many studies have investigated how the FruM circuit regulates the male decision to court, leading to the identification of distinct classes of FruM neurons that are required for specific steps of male



courtship behaviour [88,94–97]. Unlike *fru*, *dsx* also regulates sex-specific attributes outside of the nervous system [98].

The interpretation of pheromone signals by the male brain is a key component in the decision to court. FruM labels a subpopulation of olfactory and taste sensory neurons that sense sex-specific pheromones (Fig 2C). One of the best-characterized sex pheromones is *cis*-vaccenyl acetate (cVA), a male-specific volatile lipid [99]. cVA suppresses male courtship behaviour by activating a class of FruM positive olfactory sensory neurons (OSN) that express *Or67d*. *Or67d* neurons project to a sexually dimorphic glomerulus called DA1 in the antennal lobe, which is the primary olfactory relay centre in the fly brain [100]. DA1 projection neurons carry cVA signal to the lateral horn, a higher olfactory processing centre where the signal is processed by the local interneurons [101,102]. One of these interneurons, DC1, passes the cVA signal to a descending interneuron, DN1, that carries the information to the thoracic ganglia (TG), where central pattern generators for courtship song are located [95]. From the sensory neurons to the descending interneuron, all components of the cVA circuit express FruM. The behavioural relevance of this circuit has not yet been demonstrated, but it is intriguing to think that DC1 and DN1 interneurons are required for recognition of appropriate mates, preventing males from courting other males.

In addition to *Or67d*, other FruM positive olfactory neurons that express *Or47b* and *Ir84a* also influence the male decision to court [103,104]. While *Or47b* neurons are activated by an unknown fly odour, *Ir84a* neurons surprisingly respond to the plant volatiles PAA and PA [103,105]. *Or47b* and *Ir84a* neurons project to sexually dimorphic Va1v and VL2a glomeruli, respectively. Similar to DA1 PNs, Va1v and VL2a PNs also project to a pheromone-processing region of the lateral horn. These projections are physically segregated from the projection neurons responsive to food-related odours [103]. How DA1 PNs interact with Va1v and VL2a PNs to initiate courtship is under investigation; however, as all known pheromone sensitive PNs project to the lateral horn, this higher order olfactory centre is likely to be part of the decision-making circuit for male courtship initiation.

Beyond volatile pheromones, males also detect potential mates by contact pheromones that are present in fly cuticle. For example, 7-tricosene (7-T) is a male hydrocarbon that is attractive to females and repulsive to males, whereas 7,11-heptacosadiene (7,11-HD) is a female-specific hydrocarbon that acts as an aphrodisiac for males [106]. Recently, 7-T and 7,11-HD were shown to stimulate taste neurons located in male and female forelegs, respectively [96,97]. These paired taste neurons express *ppk23* and *ppk29*. FruM labels a subset of *ppk23* foreleg neurons. The function of these genes and activity of FruM positive *ppk23* neurons are required for promoting male courtship towards females and preventing courtship towards other males [96,97,107]. How *ppk23* neurons respond to both 7,11-HD and 7-T, and how these responses regulate opposing courtship behaviours are not understood. *Ppk23* neurons may be a heterogeneous population of neurons that carry additional receptors specifically tuned to 7,11-HD or 7-T. Consistent with this hypothesis, feminization of *ppk23* neurons increases male–male courtship behaviour, but it does not affect male courtship preference for females [108].

Male flies need to integrate volatile and contact pheromone information to make courtship decisions. In oenocyte-less females, which

lack cuticular hydrocarbons, application of 7,11-HD promotes courtship behaviour even in the presence of aversive cVA [109]. This indicates that cVA-sensitive *Or67d* neurons and 7,11-HD-sensitive *ppk23* neurons might converge into the same sensory processing circuit that regulates the onset of male courtship. In an effort to identify such decision-making centres, two independent groups have expressed the heat-sensitive ion channel, *TrpA1*, in distinct populations of FruM neurons and screened for male flies that initiated courtship song upon heat-induced neural activation. In both screens, a cluster of approximately 20 male-specific interneurons [87], named P1, were identified (Fig 2C). Activation of the P1 cluster was sufficient to trigger pulse song production and initiate courtship towards females. In contrast, silencing P1 neural activity attenuated natural song and disrupted male courtship [94,110]. P1 neurons are located in the lateral protocerebrum, a brain region that receives inputs from multiple sensory regions, including olfactory and taste systems. Optical imaging experiments showed that P1 neurons responded specifically to female cuticular extracts and this response is inhibited by application of cVA [110]. These experiments suggest that males use P1 neurons to integrate volatile and contact pheromone information in order to discriminate females from males and to initiate courtship towards females. In addition to olfactory and taste sensory cues, there is growing evidence that P1 neurons also receive input from other sensory modalities, including motion-sensitive neurons in the visual system [111]. Altogether, these findings demonstrate that the P1 cluster is a decision-making site in the fly brain that evaluates multiple sensory modalities to direct male initiation of courtship (Sidebar A). The methods that identified P1 also identified potential downstream neuronal clusters *PIP10* and *P2b*, which may be descending command neurons for courtship song production [94,110].

Flies exhibit territorial and aggressive behaviours in the wild and in the laboratory, to compete for resources and establish dominance [85,86]. Male flies fight with other males to occupy a food patch or to mate with a female. Female flies fight with other females for food [97,98]. Despite this, aggression studies have been long neglected in flies because of the limited occurrence of these aggressive behaviours in this species [112]. However, fly aggression has recently emerged as a new model to study emotional decisions. Similar to mice, the neural circuits and molecules that regulate mating and aggression are heavily intertwined in flies. Sexual determination pathway genes have been shown to play a critical role in establishing aggressive behaviours [113]. For example, Fru regulates the intensity and sex-specific patterns of aggression in both sexes [114,115].

Like courtship behaviour, aggressive behaviours are regulated by volatile and contact pheromones. Many pheromones that are required for appropriate courtship performance are also essential for stereotypic aggressive behaviours. Male-specific anti-aphrodisiac pheromone cVA has been shown to promote aggression through Fru-positive OSN-expressing *Or67d* [116]. The role of cVA in promoting male–male aggression and inhibiting courtship suggests a direct link between circuits that regulate these two behaviours. In addition to the acute effects of cVA in enhancing aggression, chronic cVA exposure reduces aggressive behaviours that are mediated by social interactions. Like in other animal models, social isolation increases aggressive behaviours in flies. Detection of cVA through another class of OSN that expresses *Or65a* controls the chronic

effects of social exposure on aggression [117]. How the diverse effects of cVA are encoded in higher order neurons that receive sensory information from Or67d and Or65a neurons remains unclear (Fig 2C). The effects of cVA on aggression can be modulated by the presence of contact pheromones. Male-specific contact pheromone 7-T is essential for aggression-promoting effects of cVA. It has been shown that 7-T activates bitter-sensing GRNs expressing multiple Grs including *Gr32a* (Fig 2C). *Gr32a* mutant males exhibit reduced aggression towards males and become insensitive to the aggression-promoting effects of 7-T, even in the presence of intact cVA signalling. In contrast, *Or67d* mutants that are anosmic to cVA still show aggressive behaviours in response to 7-T [118]. The hierarchical interaction between the olfactory and taste sensory systems in mediating aggression and courtship is poorly understood. Both sensory systems could converge into a central circuit, the molecular identity of which is yet to be found, that regulates a male's decision to court or fight. A group of sexually dimorphic Fru-positive neurons in the male brain have been recently shown to regulate the intensity of male–male aggression without affecting male–female courtship. These neurons produce a neuropeptide called tachykinin (Tk), which has been also linked to certain forms of aggression in other species, including humans [119]. Male-specific Tk neurons are not command neurons that trigger aggressive behaviours, and they are likely to promote aggression by modulating the internal arousal states of male flies and by influencing the interpretation of chemosensory signals by the central aggression circuits (Fig 2C).

Many sensory and central components of the courtship and aggression circuits have been identified. However, there are still obvious gaps in these circuits to fully understand how flies decide to mate or fight (Sidebar A). The future critical step is to assign functional connectivity among the identified neural clusters and to determine the direction of information flow in the circuit, by measuring neural activity while flies are selecting a behavioural action towards their peers.

In *C. elegans*, the copulation behaviour of males is triggered by contact and is the most complex motor sequence described in worms thus far. It is mediated in part by a large number of male-specific neurons and muscles, which are superimposed onto a less dimorphic nervous system shared by males and hermaphrodites [120,121]. Prior to copulation, reproductive success is facilitated by mate search. In the absence of mating partners, the food-patch leaving behaviour described above is elevated in males in a PDF-dependent manner [69]. Elevated leaving behaviour is suppressed upon hermaphrodite contact, which triggers a prolonged motivational state causing males to remain in the local area [122]. Mate search is facilitated by pheromones termed ascarosides (ASCs), which are modular compounds composed of the sugar ascarylose linked to a carbon side chain and other moieties, for example an indole group. Multiple compounds can be detected in worms, suggesting a complex modular code for pheromone communication [123]. Purified ASCs, when presented to worms alone or as mixtures, can function as attractants as well as repellents in a concentration-dependent manner [124,125]. For example, the indole compound *icas#3* can attract hermaphrodites when presented in the femtomolar range, which also promotes aggregation behaviour [126]. Compared to hermaphrodites, males reduce the amount of the hermaphrodite repellent *asc#3* and increase the production of the potent hermaphrodite attractant *ascr#10* [127]. Ascarosides that

regulate mate search are detected by GPCRs expressed in the chemosensory neurons ASI, ADL, ASK and the male-specific CEM neurons (summarized in reference [123]). ADL neurons control avoidance behaviours, whereas ASK and CEM neurons promote attraction. RMG interneurons and *npr-1* control the balance between these opposing effects to promote social aggregation [73,125]. Ascaroside-evoked sensory activity in ADL is reduced in males [125], but the basis for this functional polymorphism remains unknown. ASI neurons that secrete TGFbeta have been shown to suppress attraction in hermaphrodites by affecting signalling from ASK and other sensory neurons [128]. In addition, male-specific CEM neurons express *asc#3* receptors and are required for male attraction to *asc#3* [124,129,130]; thus, they might override the otherwise repulsive contribution of *asc#3*. Taken together, the compound effect of the ASCs that have been tested so far in behavioural assays is repulsive in hermaphrodites and attractive in males. These sex differences in mate search behaviour result from both anatomical and functional sexual dimorphisms in chemosensory circuits (Fig 2D).

Concluding remarks

Decisions can be difficult and can even go against what one has learned to be the right choice. Obese patients are often faced with difficult decisions about food, when trying to keep a weight-loss diet regimen. Reason would dictate that nutritive food would be deferred over non-nutritive ingredients, such as artificial sweeteners. However, weight loss leads to a drop in key adipose-related hormones, which in turn increase the reward value of food. The notion that decision-making behaviours go beyond the control of reason is grounded on studies in animal models, which we herein review. These studies reveal the molecular and cellular biology underlying decisions for food, sexual partners and rivals. Decisions about food don't solely rely on sensory taste organs but rather also on post-ingestive mechanisms that sense the nutrient value of food. Mice have neurons in the brain that are specialized in sensing increases in serum glucose levels, which trigger dopamine release during sugar ingestion. These neurons are a biological explanation of preference for sugar versus artificial sweeteners (Fig 1C and E). The market share of sugared soda is nearly triple that of diet soda, and the rodent data herein described suggest a biological approach that could potentially be used to regulate sugar consumption. This could be achieved through the development of new artificial sweeteners that act on glucose-sensing neurons, in addition to taste buds.

Nutrient sensing in the brain is not specific to vertebrate models. The fly, *D. melanogaster*, also contains neurons in the brain that specialize in sensing nutritive compounds (Fig 1G). In addition to glucose-sensitive neurons, a broader spectrum of nutrient-sensitive neurons have been found in flies but not yet in mice. Those include fructose and amino acid sensitive neurons that govern food-related decisions. The fly model is ahead of rodent models, not only with regard to the cellular mechanisms underlying food-related decisions, but also in those underlying decision-making for sexual mates. The advanced understanding of the molecular mechanisms underlying decision-making in the fly is not surprising, given the genetic tractability of this organism: a short life cycle, low

Sidebar A: In need of answers

- (i) How is taste information integrated with nutrient value?
- (ii) Do metabolic hormones control glucose-sensing neuronal circuits to modulate the reward value of sugar?
- (iii) Which nutrient-sensing neuronal circuits control the reward value of fat?
- (iv) How does the metabolic status change the valence of nutrients?
- (v) How do P1 neurons in the male fly brain integrate multiple sensory inputs?
- (vi) How do the aggression and mating circuits interact in the fly brain?
- (vii) What is the neural activity correlate of arousal in *C. elegans*, and how does it control decisions of choosing among various foraging strategies?
- (viii) What is the logical syntax and function of the complex modular pheromone communication system in *C. elegans*?

maintenance costs, coupled to massive and rapid generation of reagents that probe neuronal and molecular function. In this regard, another model able to compete with flies is the worm *C. elegans*, which has a life cycle of 3 days, a completely mapped neural connectome, and decision-making behaviours that encompass acute navigational taxis decisions and choices among various longer-term locomotion strategies. *Caenorhabditis elegans* decides between the full exploitation of a food source—during which it can form social feeding aggregates with conspecifics—with explorative elements expressed by local roaming, or food-patch leaving. Exploration either enables the localization of new, possibly more nutritious food sources, or ensures a balance with other drives, such as mate search (Fig 1I). Most signalling pathways described here (insulin, TGFβ, cGMP, PDF and *npr-1*) have also been described in the regulation of sleep-like quiescence states in *C. elegans*. Therefore, these behavioural strategies can be conceptualized by postulating an arousal axis ranging from sleep-like quiescence to high arousal levels during active search. In this model, arousal is associated with increased risk taking (Fig 1J) (Sidebar A). In all these cases, the choice of locomotion strategy is influenced by food availability/quality and nutritional status, and mediated by conserved neuroendocrine pathways. Interestingly, similar decision strategies are implicated in social behaviours like aggregation and mate search, which are additionally controlled by a surprisingly complex repertoire of pheromone cues that balance attraction and repulsion between animals (Sidebar A). Male-specific behaviours rely on both sexually dimorphic nervous systems and the reprogramming of neurons common to both sexes (Fig 2D).

In addition to biological mechanisms that are perhaps influenced by internal states (such as food, water or sleep deprivation), decision-making behaviours are considerably linked to learning [55,56]. However, this aspect is out of the scope of this review and has been comprehensively reviewed elsewhere [131–133].

The tools of molecular genetics have identified molecular and cellular mechanisms underlying decision-making behaviours in animal models. Whether these molecular mechanisms, particularly those demonstrated in mice, are homologous in humans remains to be determined. However, these studies underscore that, just as in animals, biology can trap people into certain decisions.

Acknowledgements

We thank Eleanor Clowney, Emily Dennis, Danielle Sonnenberg and Harris Kaplan for critically reading the manuscript, The Rockefeller University (NY), Klarman Family Foundation Grants Program in Eating Disorders Research (NY), the IMP (MZ) and Boehringer Ingelheim (MZ) for funding. NY was supported by a Human Frontier Science Program Long-Term Postdoctoral Fellowship. We also thank Gulbenkian Science Institute and FCT-Portugal for support given to AID. Gulbenkian Foundation and Fundação para a Ciência e Tecnologia (Portugal AID).

Author contributions

NY, MZ and AID composed the figures and together wrote the paper.

Conflict of interest

The authors declare that they have no conflict of interest.

References

1. Ho TH, Lim N, Camerer CF (2006) Modeling the psychology of consumer and firm behavior with behavioral economics. *J Mark Res* 43: 307–331
2. Camerer C (1999) Behavioral economics: reunifying psychology and economics. *Proc Natl Acad Sci USA* 96: 10575–10577
3. Ariely D (2008) *Predictably Irrational: the Hidden Forces That Shape Our Decisions*. New York, NY: HarperCollins Books
4. Kahneman D, Fredrickson BL, Redelmeier D, Schreiber CA (1993) When more pain is preferred to less: adding a better end. *Psychol Sci* 4: 401–405
5. Ariely D, Loewenstein G (2000) When does duration matter in judgment and decision making? *J Exp Psychol Gen* 129: 508–523
6. Ariely D (1998) Combining experiences over time: the effects of duration, intensity changes and on-line measurements on retrospective pain evaluations. *J Behav Decis Making* 11: 19–45
7. Glimcher PW, Rustichini A (2004) Neuroeconomics: the consilience of brain and decision. *Science* 306: 447–452
8. Ariely D, Berns GS (2010) Neuromarketing: the hope and hype of neuroimaging in business. *Nat Rev Neurosci* 11: 284–292
9. Padoa-Schioppa C, Assad JA (2008) The representation of economic value in the orbitofrontal cortex is invariant for changes of menu. *Nat Neurosci* 11: 95–102
10. Rushworth Matthew FS, Noonan MaryAnn P, Boorman Erie D, Walton Mark E, Behrens Timothy E (2011) Frontal cortex and reward-guided learning and decision-making. *Neuron* 70: 1054–1069
11. Montague PR, Berns GS (2002) Neural economics and the biological substrates of valuation. *Neuron* 36: 265–284
12. Rangel A (2013) Regulation of dietary choice by the decision-making circuitry. *Nat Neurosci* 16: 1717–1724
13. Jacobson MF (2005) Liquid Candy. Center for Science in the Public Interest. 1–46
14. Sicher J (2011) Soft drink market shares. *Beverage Digest* 59: 1–2
15. Domingos AI, Vaynshteyn J, Voss HU, Ren X, Gradinaru V, Zang F, Deisseroth K, de Araujo IE, Friedman J (2011) Leptin regulates the reward value of nutrient. *Nat Neurosci* 14: 1562–1568
16. de Araujo IE, Oliveira-Maia AJ, Sotnikova TD, Gainetdinov RR, Caron MG, Nicolelis MAL, Simon SA (2008) Food reward in the absence of taste receptor signaling. *Neuron* 57: 930–941

17. de Araujo IE, Lin T, Veldhuizen MG, Small DM (2013) Metabolic regulation of brain response to food cues. *Curr Biol* 23: 878–883
18. Domingos AI, Sordillo A, Dietrich MO, Liu Z-W, Tellez LA, Vaynshteyn J, Ferreira JG, Ekstrand MI, Horvath TL, de Araujo IE (2013) Hypothalamic melanin concentrating hormone neurons communicate the nutrient value of sugar. *Elife* 2: e01462
19. Burdakov D, Gerasimenko O, Verkhatsky A (2005) Physiological changes in glucose differentially modulate the excitability of hypothalamic melanin-concentrating hormone and orexin neurons in situ. *J Neurosci* 25: 2429–2433
20. Kong D, Vong L, Parton LE, Ye C, Tong Q, Hu X, Choi B, Brüning JC, Lowell BB (2010) Glucose stimulation of hypothalamic MCH neurons involves K(ATP) channels, is modulated by UCP2, and regulates peripheral glucose homeostasis. *Cell Metab* 12: 545–552
21. Buch T, Heppner FL, Tertilt C, Heinen TJA, Kremer M, Wunderlich FT, Jung S, Waisman A (2005) A Cre-inducible diphtheria toxin receptor mediates cell lineage ablation after toxin administration. *Nat Methods* 2: 419–426
22. Jago S, Glasgow SD, Herrera CG, Ekstrand M, Reed SJ, Boyce R, Friedman J, Burdakov D, Adamantidis AR (2013) Optogenetic identification of a rapid eye movement sleep modulatory circuit in the hypothalamus. *Nat Neurosci* 16: 1637–1643
23. Pérez CA, Stanley SA, Wysocki RW, Havranova J, Ahrens-Nicklas R, Onyimba F, Friedman JM (2011) Molecular annotation of integrative feeding neural circuits. *Cell Metab* 13: 222–232
24. Liu Z, Zhou J, Li Y, Hu F, Lu Y, Ma M, Feng Q, Zhang J, Wang D, Zeng J (2014) Dorsal raphe neurons signal reward through 5-HT and glutamate. *Neuron* 81: 1360–1374
25. Sclafani A, Mann S (1987) Carbohydrate taste preferences in rats: glucose, sucrose, maltose, fructose and polycose compared. *Physiol Behav* 40: 563–568
26. Nelson G, Hoon MA, Chandrashekar J, Zhang Y, Ryba NJ, Zuker CS (2001) Mammalian sweet taste receptors. *Cell* 106: 381–390
27. Leininger GM, Opland DM, Jo Y-H, Faouzi M, Christensen L, Cappellucci LA, Rhodes CJ, Gnegy ME, Becker JB, Pothos EN (2011) Leptin action via neurotensin neurons controls orexin, the mesolimbic dopamine system and energy balance. *Cell Metab* 14: 313–323
28. Thompson JL, Borgland SL (2013) Presynaptic leptin action suppresses excitatory synaptic transmission onto ventral tegmental area dopamine neurons. *Biol Psychiatry* 00: 1–9
29. Yarmolinsky DA, Zuker CS, Ryba NJ (2009) Common sense about taste: from mammals to insects. *Cell* 139: 234–244
30. Nayak SV, Singh RN (1983) Sensilla on the tarsal segments and mouthparts of adult *Drosophila melanogaster* meigen (Diptera: Drosophilidae). *Int J Insect Morphol Embryol* 12: 273–291
31. Stocker RF (1994) The organization of the chemosensory system in *Drosophila melanogaster*: a review. *Cell Tissue Res* 275: 3–26
32. Scott K, Brady R, Cravchik A, Morozov P, Rzhetsky A, Zuker C, Axel R (2001) A chemosensory gene family encoding candidate gustatory and olfactory receptors in *Drosophila*. *Cell* 104: 661–673
33. Dunipace L, Meister S, McNealy C, Amrein H (2001) Spatially restricted expression of candidate taste receptors in the *Drosophila* gustatory system. *Curr Biol* 11: 822–835
34. Clyne PJ, Warr CG, Carlson JR (2000) Candidate taste receptors in *Drosophila*. *Science* 287: 1830–1834
35. Pollack GS, Balakrishnan R (1997) Taste sensilla of flies: function, central neuronal projections, and development. *Microsc Res Tech* 39: 532–546
36. Chyb S, Dahanukar A, Wickens A, Carlson JR (2003) *Drosophila* Gr5a encodes a taste receptor tuned to trehalose. *Proc Natl Acad Sci USA* 100(Suppl 2): 14526–14530
37. Moon SJ, Köttgen M, Jiao Y, Xu H, Montell C (2006) A taste receptor required for the caffeine response in vivo. *Curr Biol* 16: 1812–1817
38. Jiao Y, Moon SJ, Wang X, Ren Q, Montell C (2008) Gr64f is required in combination with other gustatory receptors for sugar detection in *Drosophila*. *Curr Biol* 18: 1797–1801
39. Dahanukar A, Lei Y-T, Kwon JY, Carlson JR (2007) Two Gr genes underlie sugar reception in *Drosophila*. *Neuron* 56: 503–516
40. Benton R, Vannice KS, Gomez-Diaz C, Vosshall LB (2009) Variant ionotropic glutamate receptors as chemosensory receptors in *Drosophila*. *Cell* 136: 149–162
41. Rytz R, Croset V, Benton R (2013) Ionotropic receptors (IRs): chemosensory ionotropic glutamate receptors in *Drosophila* and beyond. *Insect Biochem Mol Biol* 43: 888–897
42. Kellenberger S, Schild L (2002) Epithelial sodium channel/degenerin family of ion channels: a variety of functions for a shared structure. *Physiol Rev* 82: 735–767
43. Cameron P, Hiroi M, Ngai J, Scott K (2010) The molecular basis for water taste in *Drosophila*. *Nature* 465: 91–95
44. Masek P, Keene AC (2013) *Drosophila* fatty acid taste signals through the PLC pathway in sugar-sensing neurons. *PLoS Genet* 9: e1003710
45. Toshima N, Tanimura T (2012) Taste preference for amino acids is dependent on internal nutritional state in *Drosophila melanogaster*. *J Exp Biol* 215: 2827–2832
46. Dethier VG (1976) *The Hungry Fly*. Cambridge, MA: Harvard University Press
47. Inagaki HK, Ben-Tabou de-Leon S, Wong AM, Jagadish S, Ishimoto H, Barnea G, Kitamoto T, Axel R, Anderson DJ (2012) Visualizing neuro-modulation in vivo: TANGO-mapping of dopamine signaling reveals appetite control of sugar sensing. *Cell* 148: 583–595
48. Marella S, Mann K, Scott K (2012) Dopaminergic modulation of sucrose acceptance behavior in *Drosophila*. *Neuron* 73: 941–950
49. Dus M, Min S, Keene AC, Lee GY, Suh GSB (2011) Taste-independent detection of the caloric content of sugar in *Drosophila*. *Proc Natl Acad Sci USA* 108: 11644–11649
50. Stafford JW, Lynd KM, Jung AY, Gordon MD (2012) Integration of taste and calorie sensing in *Drosophila*. *J Neurosci* 32: 14767–14774
51. Dus M, Ai M, Suh GSB (2013) Taste-independent nutrient selection is mediated by a brain-specific Na(+)/solute co-transporter in *Drosophila*. *Nat Neurosci* 16: 526–528
52. Miyamoto T, Slone J, Song X, Amrein H (2012) A fructose receptor functions as a nutrient sensor in the *Drosophila* brain. *Cell* 151: 1113–1125
53. Burke CJ, Waddell S (2011) Remembering nutrient quality of sugar in *Drosophila*. *Curr Biol* 21: 746–750
54. Fujita M, Tanimura T (2011) *Drosophila* evaluates and learns the nutritional value of sugars. *Curr Biol* 21: 751–755
55. Liu C, Plaçais P-Y, Yamagata N, Pfeiffer BD, Aso Y, Friedrich AB, Siwanowicz I, Rubin GM, Preat T, Tanimoto H (2013) A subset of dopamine neurons signals reward for odour memory in *Drosophila*. *Nature* 488: 512–516
56. Burke CJ, Huetteroth W, Oswald D, Perisse E, Krashes MJ, Das G, Gohl D, Silies M, Certel S, Waddell S (2012) Layered reward signalling through octopamine and dopamine in *Drosophila*. *Nature* 492: 433–437
57. Ribeiro C, Dickson BJ (2010) Sex peptide receptor and neuronal TOR/S6K signaling modulate nutrient balancing in *Drosophila*. *Curr Biol* 20: 1000–1005

58. Vargas MA, Luo N, Yamaguchi A, Kapahi P (2010) A role for S6 kinase and serotonin in postmating dietary switch and balance of nutrients in *D. melanogaster*. *Curr Biol* 20: 1006–1011
59. Bjordal M, Arquier N, Kniazeff J, Pin JP, Leopold P (2014) Sensing of amino acids in a dopaminergic circuitry promotes rejection of an incomplete diet in *Drosophila*. *Cell* 156: 510–521
60. Bargmann CI (2006) Chemosensation in *C. elegans*. WormBook: the online review of *C. elegans* biology. 1–29
61. Sawin ER, Ranganathan R, Horvitz HR (2000) *Caenorhabditis elegans* locomotory rate is modulated by the environment through a dopaminergic pathway and by experience through a serotonergic pathway. *Neuron* 26: 619–631
62. Gray JM, Karow DS, Lu H, Chang AJ, Chang JS, Ellis RE, Marletta MA, Bargmann CI (2004) Oxygen sensation and social feeding mediated by a *C. elegans* guanylate cyclase homologue. *Nature* 430: 317–322
63. Shtonda BB (2006) Dietary choice behavior in *Caenorhabditis elegans*. *J Exp Biol* 209: 89–102
64. Flavell SW, Pokala N, Macosko EZ, Albrecht DR, Larsch J, Bargmann CI (2013) Serotonin and the neuropeptide PDF initiate and extend opposing behavioral states in *Caenorhabditis elegans*. *Cell* 154: 1023–1035
65. Ben Arous J, Laffont S, Chatenay D (2009) Molecular and sensory basis of a food related two-state behavior in *C. elegans*. *PLoS ONE* 4: e7584
66. You Y-J, Kim J, Raizen DM, Avery L (2008) Insulin, cGMP, and TGF-beta signals regulate food intake and quiescence in *C. elegans*: a model for satiety. *Cell Metab* 7: 249–257
67. Fujiwara M, Sengupta P, McIntire SL (2002) Regulation of body size and behavioral state of *C. elegans* by sensory perception and the EGL-4 cGMP-dependent protein kinase. *Neuron* 36: 1091–1102
68. Choi S, Chatzigeorgiou M, Taylor KP, Schafer WR, Kaplan JM (2013) Analysis of NPR-1 reveals a circuit mechanism for behavioral quiescence in *Caenorhabditis elegans*. *Neuron* 78: 869–880
69. Barrios A, Ghosh R, Fang C, Emmons SW, Barr MM (2012) PDF-1 neuropeptide signaling modulates a neural circuit for mate-searching behavior in *C. elegans*. *Nat Neurosci* 15: 1675–1682
70. Cheung BHH, Cohen M, Rogers C, Albayram O, de Bono M (2005) Experience-dependent modulation of *C. elegans* behavior by ambient oxygen. *Curr Biol* 15: 905–917
71. de Bono M, Bargmann CI (1998) Natural variation in a neuropeptide Y receptor homolog modifies social behavior and food response in *C. elegans*. *Cell* 94: 679–689
72. Busch KE, Laurent P, Soltesz Z, Murphy RJ, Faivre O, Hedwig B, Thomas M, Smith HL, de Bono M (2012) Tonic signaling from O2 sensors sets neural circuit activity and behavioral state. *Nat Neurosci* 15: 581–591
73. Macosko EZ, Pokala N, Feinberg EH, Chalasani SH, Butcher RA, Clardy J, Bargmann CI (2009) A hub-and-spoke circuit drives pheromone attraction and social behaviour in *C. elegans*. *Nature* 458: 1171–1175
74. Bendesky A, Tsunozaki M, Rockman MV, Kruglyak L, Bargmann CI (2011) Catecholamine receptor polymorphisms affect decision-making in *C. elegans*. *Nature* 472: 313–318
75. Gloria-Soria A, Azevedo RBR (2008) npr-1 regulates foraging and dispersal strategies in *Caenorhabditis elegans*. *Curr Biol* 18: 1694–1699
76. Roeder T (1999) Octopamine in invertebrates. *Prog Neurobiol* 59: 533–561
77. Tsalik EL, Hobert O (2003) Functional mapping of neurons that control locomotory behavior in *Caenorhabditis elegans*. *J Neurobiol* 56: 178–197
78. Gray JM, Hill JJ, Bargmann CI (2005) A circuit for navigation in *Caenorhabditis elegans*. *Proc Natl Acad Sci USA* 102: 3184–3191
79. Hills T, Brockie PJ, Maricq AV (2004) Dopamine and glutamate control area-restricted search behavior in *Caenorhabditis elegans*. *J Neurosci* 24: 1217–1225
80. Chalasani SH, Chronis N, Tsunozaki M, Gray JM, Ramot D, Goodman MB, Bargmann CI (2007) Dissecting a circuit for olfactory behaviour in *Caenorhabditis elegans*. *Nature* 450: 63–70
81. Chalasani SH, Kato S, Albrecht DR, Nakagawa T, Abbott LF, Bargmann CI (2010) Neuropeptide feedback modifies odor-evoked dynamics in *Caenorhabditis elegans* olfactory neurons. *Nat Neurosci* 13: 615–621
82. Stowers L, Holy TE, Meister M, Dulac C, Koentges G (2002) Loss of sex discrimination and male-male aggression in mice deficient for TRP2. *Science* 295: 1493–1500
83. Yang CF, Chiang MC, Gray DC, Prabhakaran M, Alvarado M, Juntti SA, Unger EK, Wells JA, Shah NM (2013) Sexually dimorphic neurons in the ventromedial hypothalamus govern mating in both sexes and aggression in males. *Cell* 153: 896–909
84. Hall JC (1994) The mating of a fly. *Science* 264: 1702–1714
85. Dow MA, von Schilcher F (1975) Aggression and mating success in *Drosophila melanogaster*. *Nature* 254: 511–512
86. Lee G, Hall JC (2000) A newly uncovered phenotype associated with the fruitless gene of *Drosophila melanogaster*: aggression-like head interactions between mutant males. *Behav Genet* 30: 263–275
87. Kimura K-I, Hachiya T, Koganezawa M, Tazawa T, Yamamoto D (2008) Fruitless and doublesex coordinate to generate male-specific neurons that can initiate courtship. *Neuron* 59: 759–769
88. Kimura K-I, Ote M, Tazawa T, Yamamoto D (2005) Fruitless specifies sexually dimorphic neural circuitry in the *Drosophila* brain. *Nature* 438: 229–233
89. Demir E, Dickson BJ (2005) fruitless splicing specifies male courtship behavior in *Drosophila*. *Cell* 121: 785–794
90. Manoli DS, Foss M, Vilella A, Taylor BJ, Hall JC, Baker BS (2005) Male-specific fruitless specifies the neural substrates of *Drosophila* courtship behaviour. *Nature* 436: 395–400
91. Cachero S, Ostrovsky AD, Yu JY, Dickson BJ, Jefferis GSXE (2010) Sexual dimorphism in the fly brain. *Curr Biol* 20: 1589–1601
92. Stockinger P, Kvitsiani D, Rotkopf S, Tirian L, Dickson BJ (2005) Neural circuitry that governs *Drosophila* male courtship behavior. *Cell* 121: 795–807
93. Yu JY, Kanai MI, Demir E, Jefferis GSXE, Dickson BJ (2010) Cellular organization of the neural circuit that drives *Drosophila* courtship behavior. *Curr Biol* 20: 1602–1614
94. von Philipsborn AC, Liu T, Yu JY, Masser C, Bidaye SS, Dickson BJ (2011) Neuronal control of *Drosophila* courtship song. *Neuron* 69: 509–522
95. Ruta V, Datta SR, Vasconcelos ML, Freeland J, Looger LL, Axel R (2010) A dimorphic pheromone circuit in *Drosophila* from sensory input to descending output. *Nature* 468: 686–690
96. Thistle R, Cameron P, Ghorayshi A, Dennison L, Scott K (2012) Contact chemoreceptors mediate male-male repulsion and male-female attraction during *Drosophila* courtship. *Cell* 149: 1140–1151
97. Toda H, Zhao X, Dickson BJ (2012) The *Drosophila* female aphrodisiac pheromone activates ppk23(+) sensory neurons to elicit male courtship behavior. *Cell Rep* 1: 599–607
98. Rideout EJ, Dornan AJ, Neville MC, Eadie S, Goodwin SF (2010) Control of sexual differentiation and behavior by the doublesex gene in *Drosophila melanogaster*. *Nat Neurosci* 13: 458–466
99. Brieger G, Butterworth FM (1970) *Drosophila melanogaster*: identity of male lipid in reproductive system. *Science* 167: 1262

100. Kurtovic A, Widmer A, Dickson BJ (2007) A single class of olfactory neurons mediates behavioural responses to a *Drosophila* sex pheromone. *Nature* 446: 542–546
101. Datta SR, Vasconcelos ML, Ruta V, Luo S, Wong A, Demir E, Flores J, Balonze K, Dickson BJ, Axel R (2008) The *Drosophila* pheromone cVA activates a sexually dimorphic neural circuit. *Nature* 452: 473–477
102. Kohl J, Ostrovsky AD, Frechter S, Jefferis GSX (2013) A bidirectional circuit switch reroutes pheromone signals in male and female brains. *Cell* 155: 1610–1623
103. Grosjean Y, Rytz R, Farine J-P, Abuin L, Cortot J, Jefferis GS, Benton R (2011) An olfactory receptor for food-derived odours promotes male courtship in *Drosophila*. *Nature* 478: 236–240
104. Root CM, Masuyama K, Green DS, Enell LE, Nassel DR, Lee C-H, Wang JW (2008) A presynaptic gain control mechanism fine-tunes olfactory behavior. *Neuron* 59: 311–321
105. van der Goes van Naters W, Carlson JR (2007) Receptors and neurons for fly odors in *Drosophila*. *Curr Biol* 17: 606–612
106. Ferveur J-F (2005) Cuticular hydrocarbons: their evolution and roles in *Drosophila* Pheromonal communication. *Behav Genet* 35: 279–295
107. Lu B, LaMora A, Sun Y, Welsh MJ, Ben-Shahar Y (2012) ppk23-Dependent chemosensory functions contribute to courtship behavior in *Drosophila melanogaster*. *PLoS Genet* 8: e1002587
108. Lu B, Zelle KM, Seltzer R, Hefetz A, Ben-Shahar Y (2014) Feminization of pheromone-sensing neurons affects mating decisions in *Drosophila* males. *Biol Open* 3: 152–160
109. Billeter J-C, Atallah J, Krupp JJ, Millar JG, Levine JD (2009) Specialized cells tag sexual and species identity in *Drosophila melanogaster*. *Nature* 461: 987–991
110. Kohatsu S, Koganezawa M, Yamamoto D (2011) Female contact activates male-specific interneurons that trigger stereotypic courtship behavior in *Drosophila*. *Neuron* 69: 498–508
111. Pan Y, Meissner GW, Baker BS (2012) Joint control of *Drosophila* male courtship behavior by motion cues and activation of male-specific P1 neurons. *Proc Natl Acad Sci USA* 109: 10065–10070
112. Zwarts L, Versteven M, Callaerts P (2012) Genetics and neurobiology of aggression in *Drosophila*. *Fly* 6: 35–48
113. Baier A, Wittek B, Brembs B (2002) *Drosophila* as a new model organism for the neurobiology of aggression? *J Exp Biol* 205: 1233–1240
114. Nilsen SP, Chan Y-B, Huber R, Kravitz EA (2004) Gender-selective patterns of aggressive behavior in *Drosophila melanogaster*. *Proc Natl Acad Sci USA* 101: 12342–12347
115. Vrontou E, Nilsen SP, Demir E, Kravitz EA, Dickson BJ (2006) fruitless regulates aggression and dominance in *Drosophila*. *Nat Neurosci* 9: 1469–1471
116. Wang L, Anderson DJ (2010) Identification of an aggression-promoting pheromone and its receptor neurons in *Drosophila*. *Nature* 463: 227–231
117. Liu W, Liang X, Gong J, Yang Z, Zhang Y-H, Zhang J-X, Rao Y (2011) Social regulation of aggression by pheromonal activation of Or65a olfactory neurons in *Drosophila*. *Nat Neurosci* 14: 896–902
118. Wang L, Han X, Mehren J, Hiroi M, Billeter J-C, Miyamoto T, Amrein H, Levine JD, Anderson DJ (2011) Hierarchical chemosensory regulation of male-male social interactions in *Drosophila*. *Nat Neurosci* 14: 757–762
119. Asahina K, Watanabe K, Duistermars BJ, Hoopfer E, González CR, Eyjólfsson EA, Perona P, Anderson DJ (2014) Tachykinin-expressing neurons control male-specific aggressive arousal in *Drosophila*. *Cell* 156: 221–235
120. Barr M (2006) Male mating behavior. WormBook: the online review of *C. elegans* biology.
121. Jarrell TA, Wang Y, Bloniarz AE, Brittin CA, Xu M, Thomson JN, Albertson DG, Hall DH, Emmons SW (2012) The connectome of a decision-making neural network. *Science* 337: 437–444
122. Barrios A, Nurrish S, Emmons SW (2008) Sensory regulation of *C. elegans* male mate-searching behavior. *Curr Biol* 18: 1865–1871
123. Ludewig AH, Schroeder FC (2013) Ascaroside signaling in *C. elegans*. WormBook: the online review of *C. elegans* biology. 1–22
124. Srinivasan J, Kaplan F, Ajredini R, Zachariah C, Alborn HT, Teal PE, Malik RU, Edison AS, Sternberg PW, Schroeder FC (2008) A blend of small molecules regulates both mating and development in *Caenorhabditis elegans*. *Nature* 454: 1115–1118
125. Jang H, Kim K, Neal SJ, Macosko E, Kim D, Butcher RA, Zeiger DM, Bargmann CI, Sengupta P (2012) Neuromodulatory state and sex specify alternative behaviors through antagonistic synaptic pathways in *C. elegans*. *Neuron* 75: 585–592
126. Srinivasan J, von Reuss SH, Bose N, Zaslaver A, Mahanti P, Ho MC, O'Doherty OG, Edison AS, Sternberg PW, Schroeder FC (2012) A modular library of small molecule signals regulates social behaviors in *Caenorhabditis elegans*. *PLoS Biol* 10: e1001237
127. Izrayelit Y, Srinivasan J, Campbell SL, Jo Y, von Reuss SH, Genoff MC, Sternberg PW, Schroeder FC (2012) Targeted metabolomics reveals a male pheromone and sex-specific ascaroside biosynthesis in *Caenorhabditis elegans*. *ACS Chem Biol* 7: 1321–1325
128. White JQ, Jorgensen EM (2012) Sensation in a single neuron pair represses male behavior in hermaphrodites. *Neuron* 75: 593–600
129. Park D, O'Doherty I, Somvanshi RK, Bethke A, Schroeder FC, Kumar U, Riddle DL (2012) Interaction of structure-specific and promiscuous G-protein-coupled receptors mediates small-molecule signaling in *Caenorhabditis elegans*. *Proc Natl Acad Sci USA* 109: 9917–9922
130. White JQ, Nicholas TJ, Gritton J, Truong L, Davidson ER, Jorgensen EM (2007) The sensory circuitry for sexual attraction in *C. elegans* males. *Curr Biol* 17: 1847–1857
131. Brembs B (2011) Spontaneous decisions and operant conditioning in fruit flies. *Behav Process* 87: 157–164
132. Dayan P, Daw ND (2008) Decision theory, reinforcement learning, and the brain. *Cogn Affect Behav Neurosci* 8: 429–453
133. Sasakura H, Mori I (2013) Behavioral plasticity, learning, and memory in *C. elegans*. *Curr Opin Neurobiol* 23: 92–99