



RESEARCH

Open Access

Anti-IGF-1R monoclonal antibody inhibits the carcinogenicity activity of acquired trastuzumab-resistant SKOV3

Wei Wang^{1,2†}, Yan Zhang^{3†}, Ming Lv², Jiannan Feng^{1,2}, Hui Peng⁴, Jing Geng², Zhou Lin², Tingting Zhou², Xinying Li², Beifen Shen², Yuanfang Ma^{1*} and Chunxia Qiao^{2*}

Abstract

Background: Antibody resistance, not only *de novo* but also acquired cases, usually exists and is related with lower survival rate and high risk of recurrence. Reversing the resistance often results in better clinical therapeutic effect. Previously, we established a trastuzumab-resistant ovarian cancer cell line, named as SKOV3-T, with lower HER2 and induced higher IGF-1R expression level to keep cell survival.

Methods: IGF-1R was identified important for SKOV3-T growth. Then, a novel anti-IGF-1R monoclonal antibody, named as LMAB1, was used to inhibit SKOV3-T in cell growth/proliferation, migration, clone formation and *in vivo* carcinogenicity.

Results: In both *in vitro* and *in vivo* assays, LMAB1 showed effective anti-tumor function, especially when being used in combination with trastuzumab, which was beneficial to longer survival time of mice as well as smaller tumor. It was also confirmed preliminarily that the mechanism of antibody might be to inhibit the activation of IGF-1R and downstream MAPK, AKT pathway transduction.

Conclusion: We achieved satisfactory anti-tumor activity using trastuzumab plus LMAB1 in trastuzumab-resistant ovarian cancer model. In similar cases, not only acquired but also *de novo*, good curative effect might be achieved using combined antibody therapy strategies.

Keywords: IGF-1R, Monoclonal antibody, Acquired resistant, Trastuzumab, Ovarian cancer

Introduction

An antibody (Ab), also known as an immunoglobulin (Ig), is a large Y-shape protein produced by plasma cells that is used by the immune system to identify and neutralize foreign object, such as bacteria and virus, which is called "antigen". Monoclonal antibody (mAb) recognizes a unique part of the antigen specifically, e.g. tumor associated antigens like EGFR or HER-2, and these mAbs have been widely used as standard treatment in clinical trials.

Along with more knowledge of the structure and potential modifications of mAbs plays an increasingly important

role in cancer immunotherapy. Over the past few years many biological technologies have been invented to prepare therapeutic antibody drugs, including chimeric, humanized or fully human antibodies, radioimmunotherapeutic agents, antibody-drug conjugates (ADCs), and bi-specific T cell engagers (BiTEs), etc. As early as 1998, the FDA approved the use of Trastuzumab, the first anti-HER2 humanized antibody, for HER2-positive breast cancer. In 2012, the FDA approved another anti-HER2 drug, Pertuzumab, for advanced or metastatic breast cancer with high or low expression level of HER2. There has also been a lot of excitement about the development of antibody-drug conjugates, as these drugs are designed to improve local delivery of highly toxic chemotherapeutics meanwhile simultaneously attempting to minimize systemic toxicity.

* Correspondence: mayf@henu.edu.cn; bioqcx1982@hotmail.com

†Equal contributors

¹Laboratory of Cellular and Molecular Immunology, Institute of Immunology, Henan University, Kaifeng 475001, China

²Laboratory of Immunology, Institute of Basic Medical Sciences, PO Box 130(3), Taiping Road #27, Beijing 100850, China

Full list of author information is available at the end of the article

In 2013, an anti-HER2 ADC drug, trastuzumab emtansine, was approved by the FDA for patients with metastatic HER2-positive breast cancer [1].

HER2, a receptor tyrosine-protein kinase also known as erbB-2/CD340, belongs to the transmembrane epidermal growth factor type II receptor family. It represents the prototype of a stable molecular abnormality endowed with well-characterized functional consequences. It has been found in several of the most common solid tumors, including but not limited to ovarian, breast, colon, non-small cell lung cancer, endometrial, prostate and cervical cancer [2-5]. More importantly, HER2 overexpression has been shown to correlate with a worse prognosis in both node-positive and node-negative breast cancer patients. It also has potential therapeutic and diagnostic value in other types of solid tumor, e.g. multiple gynecologic cancers [6].

Trastuzumab (Herceptin®, Genentech, CA, USA) is a humanized monoclonal IgG1 antibody that works both through initiation of ADCC and recruitment of NK cells as well as restrain of downstream effectors [7-9]. It was FDA-approved in 1998 as an adjunct to cyclophosphamide, paclitaxel and/or doxorubicin in the treatment of early-stage HER2 positive breast cancer, and as a single drug for adjuvant treatment of early-stage, HER2 positive, high-risk ER/PR-negative breast cancers following multi-modality anthracycline-based therapy [10]. Trastuzumab has provided a promising therapeutic advantage in not only breast cancer but in other tumor types; moreover, combination therapy with trastuzumab and chemotherapeutics is generally more effective than single agents in HER2 positive breast and gastric cancer.

Pertuzumab (Omnitarg®, Genentech, South San Francisco, CA, USA) is a humanized IgG1 mAb. It is a HER heterodimerization inhibitor that binds domain II of the extracellular HER2. Pertuzumab received the US FDA approval for the treatment of HER2-positive metastatic breast cancer on June 8, 2012. Compared to trastuzumab, pertuzumab inhibits a broader array of downstream signal transduction pathways through inhibition of lateral signal transduction [11-15].

Trastuzumab emtansine (Kadcyla/T-DM1, Genentech/Roche) is a novel antibody-drug conjugate approved in 2013 with trastuzumab for targeted delivery and antimicrotubule agent DM1 for cytotoxicity. In contrast to trastuzumab, T-DM1 not only inhibits the growth of cancer cells by binding to the HER2 receptor, but also kills them by emtansine, for emtansine can enter cells and bind to tubulin [16]. T-DM1 has demonstrated robust clinical activity in pretreated HER2-positive breast cancer patients with a 43.6% objective response rate and median PFS of 9.6 months [17]. The global marketing of T-DM1 may over 3 billion in 2018 predicted by Bloomberg Limited Partnership recently.

Although antibody drugs against cancers have made great clinical achievements, there still exist many cases in which the patients do not respond to the antibody at the very beginning; besides, many patients who received antibody treatment relapsed because of subsequent antibody resistance. For instance, many HER2-positive breast cancers do not respond to trastuzumab treatment (de novo resistance), while many trastuzumab-responsive patients develop resistance after continuous trastuzumab infusion within one year (acquired resistance) [18,19]; meanwhile, although the treatments have improved, the major problem in the hematological multiple myeloma (MM) is the resistance to therapy. Most patients will eventually relapse or become resistance to bivatuzumab, which is a humanized anti-CD44v6 variant monoclonal antibody to inhibit cell adhesion to hyaluronan [20,21]; besides, two anti-epidermal growth factor receptor (EGFR) mAbs, the chimeric IgG1 mAb cetuximab and the human IgG2 mAb panitumumab, have shown relevant clinical effect in chemotherapy-refractory metastatic colorectal cancer (mCRC) [22-25]. Because of common resistance to anti-EGFR mAbs, recent guideline recommendations suggest that anti-EGFR mAbs be given only to patients with KRAS wild-type mCRC [26,27]. However, the overall response rate is still not high, ranging from 17% to 60% [28-37].

Antibody resistance phenomenon exists in so many cases that researchers work hard about it, and a lot of articles have been published. The available methods include combination therapy, that is, the mAb was used plus chemotherapy, or radiation therapy, or other mAbs. In a phase III study of women with HER2-positive breast cancer that treated with trastuzumab, the combination therapy with capecitabine and the multi-tyrosine kinase inhibitor lapatinib, which inhibits both HER2 and EGFR, substantially extended progression-free survival time for 4 months [38]. In a randomized clinical trial, breast cancer patients that progressed after previous trastuzumab therapy were recruited. They were treated with trastuzumab plus capecitabine, which provided significant benefit compared with capecitabine alone [39]; Furthermore, in some cases, antibody resistance was dealt with anti-angiogenic agents, e.g. bevacizumab, an anti-VEGF mAb, which can improved the overall survival rate in metastatic colorectal and lung cancers when combined with chemotherapy [40,41], and progression-free survival in metastatic breast and ovarian cancer [42], etc..

In our previous work, an acquired trastuzumab-resistant cell model of human ovarian cancer, SKOV3-T, was established, and IGF-1R molecule was found by microarray analysis and preliminarily testified to be pivotal in cell proliferation. In this study, we confirmed the key role of IGF-1R in SKOV3-T cells compared to SKOV3 in cell growth/proliferation, *in vitro* clone formation, invasion/migration,

cell cycling and *in vivo* carcinogenic effect; then a novel anti-IGF-1R human antibody, LMAB1, was prepared and the activity was confirmed to inhibit the carcinogenesis of trastuzumab-resistant ovarian cancer cells both *in vitro* and *in vivo*.

Methods

Reagents

Trastuzumab (Herceptin®) was obtained from F. Hoffmann-La Roche Ltd.; Antibodies for western blot against EGFR, p-EGFR (Tyr1068), HER2, p-HER2 (Tyr1248), HER3, p-HER3 (Tyr1289), Akt, p-Akt (Ser473), ERK1/2, p-ERK1/2 (Thr202/Tyr204), Src, p-Src (Tyr416), IGF-1R, p-IGF-1R (Tyr1135/Tyr1136), GAPDH and corresponding secondary antibodies were purchased from Cell Signaling Technology; PE conjugated anti-EGFR and anti-HER3, FITC-conjugated Annexin V antibodies and propidium iodide (PI) were from eBioscience; PE conjugated anti-HER2 antibody was from BD; Electrophoresis reagents and Hybridization Nitrocellulose Filter membranes were from Bio-Rad; BCA protein assay and enhanced chemiluminescent (ECL) reagents were from Pierce; Cell culture medium Dulbecco's modified Eagle medium (DMEM) and fetal bovine serum (FBS) were purchased from HyClone; Human IGF-1, NRG1-β1/HRG1-β1 was from R & D; IGF-1R expressing plasmid pCMV6-IGF1R was from OriGene; Lentiviral delivery system was packaged by Gene Pharma (China); MTT [3-(4,5-dimethylthiazol-2-yl)-2,5-diphenyl tetrazolium bromide] and agarose (cell culture level) were purchased from Sigma-Aldrich; Matrigel and Transwell chamber was from Millipore. All other chemicals were obtained from commercial source of analytical grade.

Cell culture

Human ovarian cancer cell line SKOV3 was from ATCC (American Type Culture Collection, ATCC No. HTB-77). The cells were cultivated in DMEM supplemented with 100 units/ml penicillin, 100 units/ml streptomycin, 10% FBS and 4 mM L-glutamine.

Acquired trastuzumab-resistant ovarian cancer cell line SKOV3-T was developed through continuously culturing SKOV3 cells in the presence of 20 µg/ml trastuzumab. Surviving cells were pooled together and tested for dose response to trastuzumab as described before [43]. SKOV3-T cells are now maintained in the presence of 10 µg/ml trastuzumab.

All the cells were incubated in a humidified incubator (Thermo, America) at 37°C with 5% CO₂.

Proliferation assay

The cells were loaded in 96-well plate with 2×10^3 cells per well with or without various concentration of antibody supplemented with 40 ng/ml of IGF-1 for 72 hours. Human IgG isotype was added as negative control. The

medium was removed from each well and 10 µL of CCK-8 solution was added to 100 µL medium in each well for 1–4 hours' incubation at 37°C. The absorbance was measured at 450 nm on a Tecan Spectrophotometer (Tecan SPECTRAFluor, Tecan, Männedorf, Switzerland).

Transwell assay

Cells were digested to a suspension with a density of 1×10^4 /ml. Cells were seeded into the transwell chamber (Millipore, USA) which membrane was coated by a dilution of Matrigel (50 mg/L). The chamber was placed into a 24 well culture plate, with 500 µl of DMEM medium containing 10% serum added outside of the chamber, and 200 µl cell suspension were added in the chamber. After 3, 6, 9, 24 hours, the cells were stained and placed under the fluorescence microscope for observation.

Agar clone formation assay

Preparation of agarose hydrogels: Agarose was purchased from Sigma-Aldrich, St. Louis, USA. Hydrogel was prepared by dissolving agarose (0.6%, 1.2% w/t) in aqueous solvent at the temperature of 90°C. Once the temperature of this solution is lowered to room temperature, gelation will occur.

Cells were harvested using 0.25% trypsin, counted, and then loaded in agarose scaffolds. Briefly, cells were suspended in 0.6% agarose with the cell density of 1000 cells/1000 µL. The low agarose (2 × DMEM, 10% FBS, 1.2% agarose) molds were allowed to gelation at 4°C for 20 min, and then transferred to 6well culture plate, then add the up agarose (2 × DMEM, 10% FBS, 0.6% agarose). The plate was placed in incubator containing 5% CO₂ at 37°C. As control, cell aggregates were cultured with the same condition as that of experiment group. Culture media were changed every 3 days. Assays were performed at time points of 14 days.

Flow cytometry

Cells were collected and stained with appropriate PE conjugated antibodies against membrane markers. For each sample, data from approximately 15,000 cells were analyzed using a BD-FACStar™ instrument. Data analysis (the percentage and intensity of stained cells, etc.) was performed on a FACS Calibur flow cytometer using the BD CellQuest™ program.

Western blot

Cell monolayers were washed with cold PBS before they were lysed in cell lysis buffer (20 mM Tris at pH 7.0, 1% Triton-X 100, 0.5% NP-40, 250 mM NaCl, 3 mM EDTA, 3 mM EGTA, 2 mM DTT and protease inhibitor cocktail). Cell lysate supernatants were collected by 12000 × g centrifugation for 15 minutes at 4°C. Total protein concentrations in these fractions were determined by BCA

protein assay. The samples were electrophoretically separated on SDS-PAGE and transferred to NC membrane. The membranes were blocked with 5% non-fat dry milk dissolved in TBST (10 mM Tris HCl, 150 mM NaCl containing 0.05% Tween 20, pH 7.4) for 1 hour before probing overnight at 4°C with the appropriate primary antibody (HER1, HER2, HER3, HER4, IGF-1R). In the second day, after washed with TBST three times, the membranes were incubated with HRP-conjugated secondary antibody for 1 hour at room temperature. Signals were detected by X-ray Film following incubation with ECL.

In antibody treating assay, cells were cultivated in 6-well plate and serum starved overnight. In the next day, renew the culture with/without diluted Lmab1 at the concentration of 0.8, 4, 20 µg/ml or 20 µg/ml of trastuzumab for 4 hours. Then cells were stimulated with 20 ng/mL of IGF-I for 20 min. Then cells were collected for western blot analysis.

Cell cycle

Cells were collected by digestion and prepared by fixation in 75% ethanol overnight (at least 18 hours) at -20°C. Then cells were stained with 50 µg/ml PI and 100 µg/ml RNase A for 30 min at 37°C in the dark. Quantification of the cell cycle distribution was done by flow cytometry analysis.

Lentivirus systems for down-regulation of IGF-1R

The Lentivirus system was used to knock down IGF-1R expression. The RNAi delivery system was used to deliver shRNAs against IGF-1R as described previously [44].

SKOV3 cells were seeded in a 6-well plate (approximately 5×10^4 cells per well with 2 ml of growth medium). Growth medium was replaced with 2 ml of lentiviral medium containing 8 µg/ml of polybrene at final. After 24 hours, medium was replaced with puromycin-containing growth medium to select transduced cells.

In vivo carcinogenic and immunotherapy assays

Groups of 5-wk-old female BALB/c athymic, nu/nu (nude) mice were inoculated on fat pad with 2×10^6 /0.1 ml SKOV3 or 1×10^6 /0.1 ml SKOV3-T cells on day 0. Since day 7, mice bearing palpable tumors were randomized into four groups with 6 mice per group ($n = 6$). Then mice were observed twice a week about body weight, survival rates and tumor volumes according to the following equation: Tumor volume (mm^3) = $1/2 \times (\text{length}) \times (\text{width})^2$. Pairwise differences between groups were compared.

In *in vivo* immunotherapy assay, mice were inoculated with 1×10^6 /0.1 ml SKOV3-T cells. On day 7, mice were treated *i.v.* once a week for four times with 5 mg/kg trastuzumab (group 2), 5 mg/kg Lmab1 (group 3),

2.5 mg/kg Lmab1 (group 4), 5 mg/kg trastuzumab plus 5 mg/kg Lmab1 (group 5), 5 mg/kg trastuzumab and 2.5 mg/kg Lmab1 (group 6), natural saline (N.S.) were set as negative control (group 1).

Care, in animal assays, we followed the Guidelines for the welfare and use of animals in cancer research. Use and treatment of mice were in strict agreement with international guidelines for the care and use of laboratory animals and approved by Animal Ethics Committee of Institute of Basic Medical Sciences.

Results

Acquired trastuzumab-resistant SKOV3-T cells grow faster than SKOV3

Human ovarian cancer SKOV3 cells, which over express HER2, were cultured continuously for 8 months in the presence of 10 µg/ml trastuzumab, resulting in the acquisition of trastuzumab resistance in the surviving cell population. Compared with the parental cells, the resistant SKOV3 cells had a significant higher viability or proliferative capacity in cell proliferation assay (Figure 1A) in 96-well plate and cell counting assay (Figure 1B); meanwhile, SKOV3-T displayed dramatically increased colony formation on the agar cloning assay, for the clones were obviously bigger and much more than SKOV3 (Figure 1C); furthermore, in transwell assays, SKOV3-T exhibited stronger migration capacity, for after 24 hours, about 626 SKOV3-T cells moved while only less than 100 SKOV3 cells moved across the well (Figure 1D); furthermore, in *in vivo* carcinogenic assay, the mean volume of SKOV3-T transplanted tumor was significantly larger than SKOV3 (Figure 1E). These results suggest that trastuzumab-resistant ovarian cancer cells SKOV3-T growth much faster and migrate better than SKOV3, suggesting stronger malignancy and metastasis character of SKOV3-T *in vivo* than non-resistant cells.

IGF-1R can promote the proliferation of SKOV3

According to our previous work, based on the mRNA array analysis, IGF-1R up-regulation (Figure 2A) was proved to play a key role in SKOV3-T proliferation *in vitro*. To the opposite, the expression level of HER2 in SKOV3-T was dramatically lower than SKOV3 by flow cytometry method (Figure 2A). To further examine the role of IGF-1R in ovarian cancer cells, IGF-1R-pCMV6 plasmid, a eukaryotic expression vector subcloned with full IGF-1R exon sequence, was transfected into SKOV3 using lipofectamine 2000, generating a pool of IGF-1R-positive SKOV3 cells (Figure 2B). As shown in Figure 2C, the transfected cells had much higher viability or proliferative capacity than SKOV3; meanwhile, they also displayed increased colony formation capacity (Figure 2D); furthermore, according to the cell cycling assay, SKOV3-IGF-1R cells (pool) has S-phase cells than SKOV3,

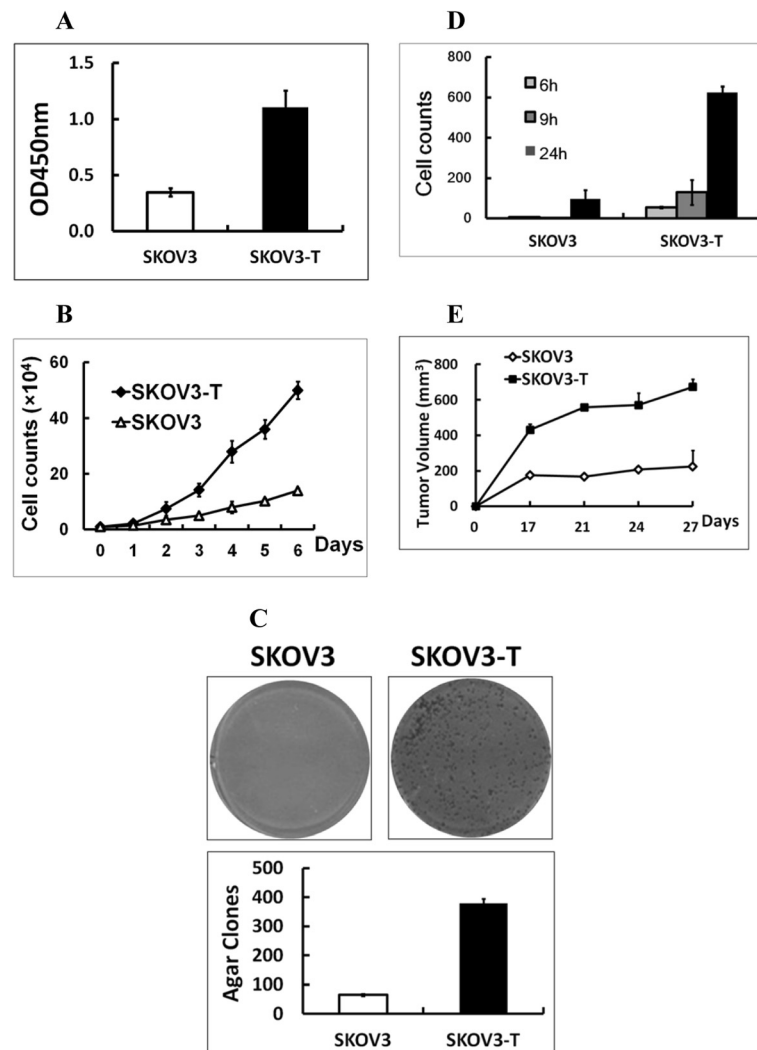


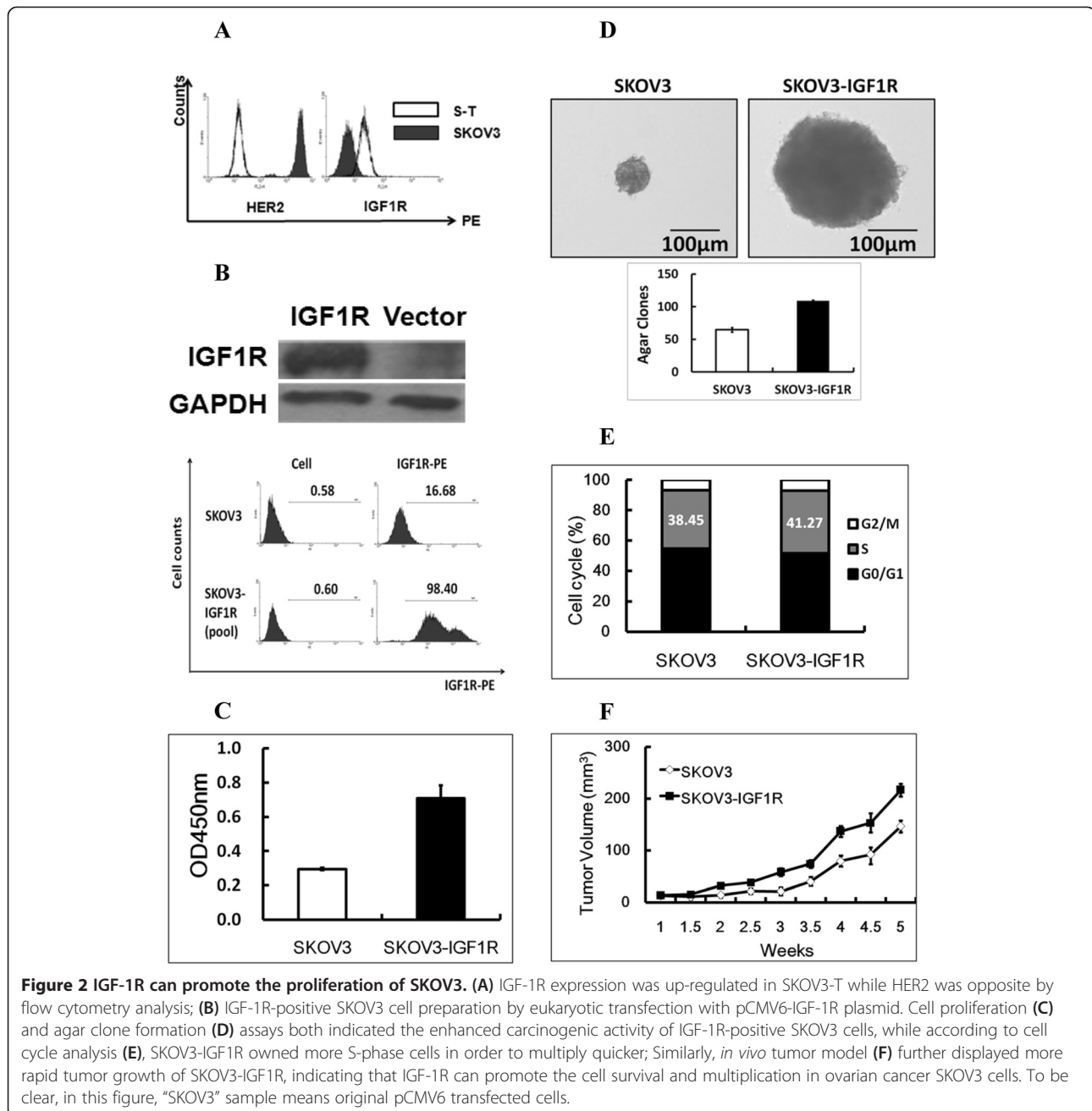
Figure 1 Acquired trastuzumab-resistant cell line SKOV3-T cells grow faster than SKOV3. SKOV3 cells were cultivated for 8 months in the presence of 20 µg/ml trastuzumab continuously to obtain SKOV3-T cells. The comparison of SKOV3-T and parental SKOV3 cells by (A) cell proliferation, (B) cell counting, (C) agar clone formation, (D) transwell, and (E) *in vivo* carcinogenic assays. In cell counting assays, cells were cultured in day 0 at the start concentration of 1×10^4 per 24-well, and in day 1 to day 6, the cells were digested everyday and the whole cell number was counted. The trastuzumab-resistant SKOV3-T seemed to have significantly enhanced cell growth/proliferation, clone formation, stronger invasion and migration character both *in vitro* and *in vivo* versus non-resistant SKOV3 cells.

suggesting much quicker cell multiplication rate of SKOV3-IGF-1R cells (Figure 2E); in *in vivo* tumor formation assay, IGF-1R positive cells exhibited more rapid growth capacity than parental cells (Figure 2F), indicating that IGF-1R can promote the proliferation of SKOV3. All above demonstrated the importance of membrane IGF-1R as well as its downstream cascade in retaining/promoting the survival of SKOV3-T, especially when HER2-related signal pathway was down-regulated.

IGF-1R knockdown by shRNA could inhibit the proliferation of SKOV3-T

As shown above, IGF-1R could fasten the cell growth of SKOV3, which was similar to the quick growth of

SKOV3-T. In order to further analyze the biofunction(s) of IGF-1R in SKOV3-T cells, a lentivirus vector to knock down IGF-1R was packed and transduced into SKOV3-T cells, while cells transduced with virus CON054 were set as negative control. As shown in Figure 3A, IGF-1R expression was inhibited according to flow cytometry and western blot analysis. Further, cell proliferation assay showed that SKOV3-T KD cells grow more slowly than SKOV3-T (Figure 3B); similarly, the agar clone formation capacity of SKOV3-T KD cells was weaker (Figure 3C); meanwhile, in the cell cycling assay shown in Figure 3D, SKOV3-T KD exhibited less S-phase cells (28.84%) than SKOV3-T (31.23%), indicating that IGF-1R could affect the cell cycle, thus influence the cell



proliferation of SKOV3-T. Further *in vivo* experiment also displayed the importance of IGF-1R in SKOV3-T, for the mean tumor volume of SKOV3-T was $\sim 1257 \text{ mm}^3$, while SKOV3 KD was $\sim 1115 \text{ mm}^3$ (Figure 3E).

Anti-IGF-1R mAb (LMAb1) could inhibit the proliferation of SKOV3-T

Since the trastuzumab resistant SKOV3-T cells have higher IGF-1R level than parental SKOV3 cells, a novel anti-IGF-1R mAb, named as LMAb1, was screened out from a natural fully human phage library in our lab

(Chinese patent: 201410271608.8). Here, in SKOV3-T cells, LMAb1 could inhibit cell proliferation, for in $10 \mu\text{g/ml}$ LMAb1 treated samples, cell survival rate was $\sim 75\%$ contrasting to non-treated groups (Figure 4A); meanwhile, the agar clone formation of SKOV3-T was also inhibited by LMAb1. When the concentration of antibody reached $50 \mu\text{g/ml}$, the average clone number was ~ 757 contrasting to ~ 1102 of SKOV3-T (Figure 4B); furthermore, in transwell assay, the migration capacity was inhibited on a dose dependent manner, for after 15 hours, about 300 SKOV3-T cells per well were

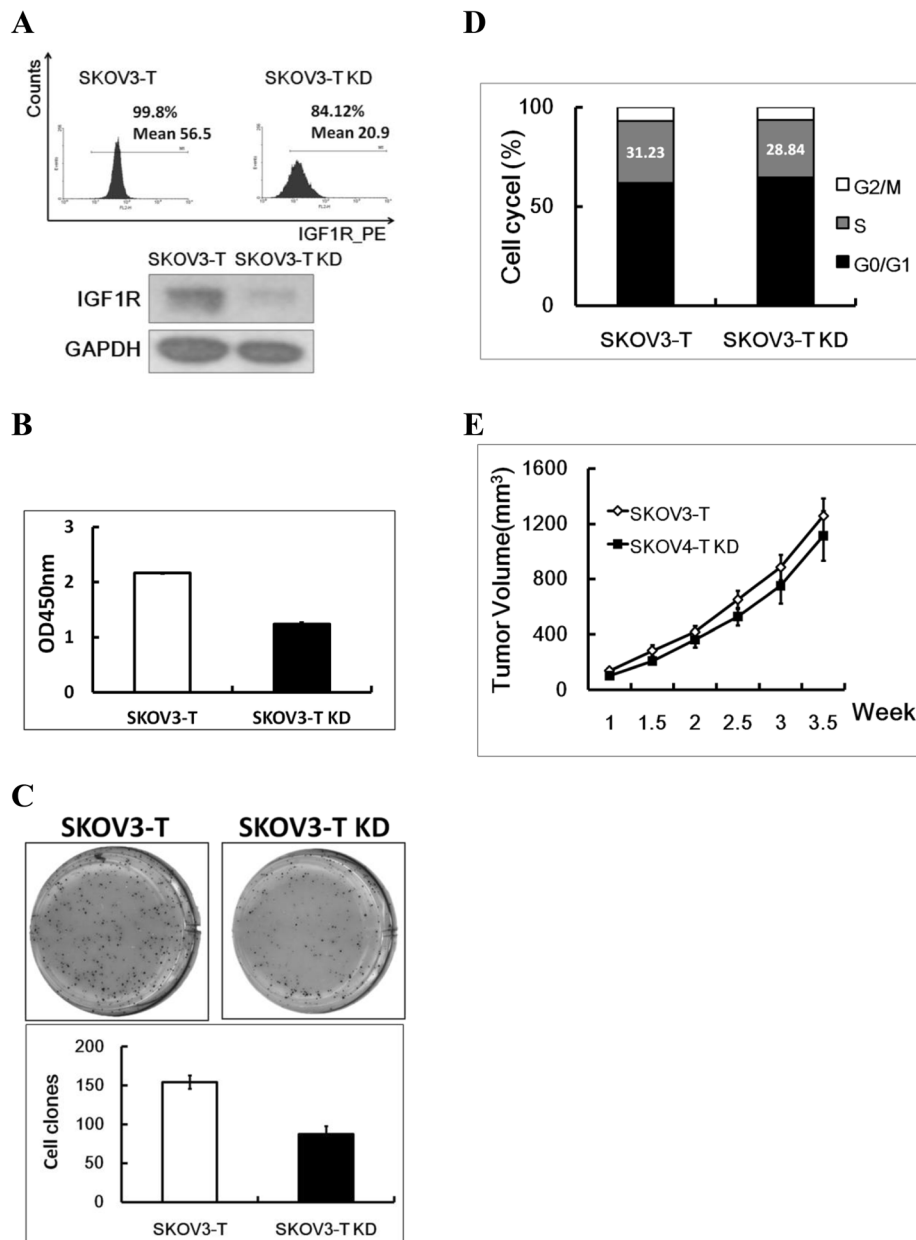


Figure 3 IGF-1R knockdown could inhibit the proliferation of SKOV3-T. (A) IGF-1R expression was knocked down in SKOV3-T cells using lentivirus system and cells were analyzed by flow cytometry (up panel) and western blot (down panel) analysis; Cell proliferation (B) and clone formation (C) analysis both indicated that in SKOV3 KD cells, the cell growth was inhibited, while according to cell cycle analysis (D), SKOV3-T KD cells owned less S-phase cells in order to slower cell multiplication; In *in vivo* carcinogenic model, SKOV3-T KD exhibited slower tumor growth rate contrasting to SKOV3-T (E), indicating that IGF-1R was important to SKOV3-T cells when HER2-related cascade was blocked. To be clear, in this figure, "SKOV3-T" sample means control virus treated SKOV3-T cells.

migrated, while less cells moved across the hole in antibody treated samples. Here, four different scales of each sample were photographed and counted. Contrasting to the control sample (the mean cell number of each scale was about 30), the 100 µg/ml antibody treated sample showed less than 10 migrated cells (Figure 4C); In *in vivo* experiments, LMAB1 showed certain anti-tumor capacity, especially in the groups treated with LMAB1

combined with trastuzumab. In contrast to the SKOV3-T group with the mean tumor volume of ~1161 mm³ and the trastuzumab treated group (~1123 mm³), the groups administrated with LMAB1, whether alone or plus trastuzumab, has the mean tumor volume of 600~700 mm³ (Figure 4D). More interestingly, the mean survival time of LMAB1 plus trastuzumab treated mice was much longer. As shown in Figure 4E, in week 8, about half of LMAB1

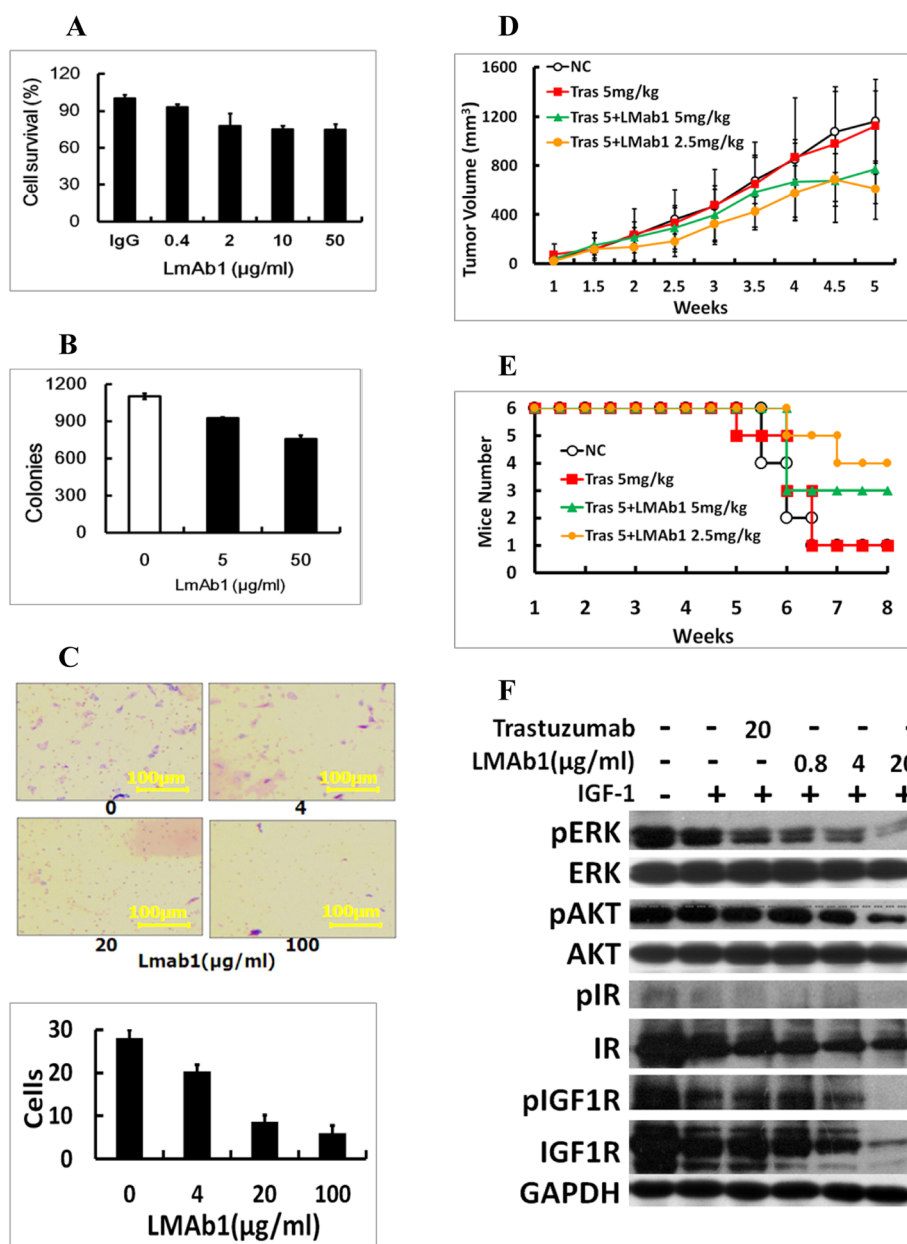


Figure 4 LMAb1 could inhibit the proliferation of SKOV3-T. (A) LMAb1 could inhibit cell proliferation of SKOV3-T at a dose dependent manner. Similarly, the character of clone formation (B) and invasion/migration identified by transwell assay (C) could also be inhibited by LMAb1 in resistant SKOV3-T cells; (D & E) *in vivo* immunotherapy of LMAb1 combined with/without trastuzumab to SKOV3-T xenograft model in nude mice. D: mean tumor volume and E: overall survival rate; (F) LMAb1 could inhibit IGF-1R signal pathway transduction, for it could inhibit the MAPK and AKT activation stimulated by IGF-1. Presumably, for IGF-1R was dramatically up-regulated in acquired trastuzumab-resistant SKOV3-T cells, specific anti-IGF-1R antibody (LMAb1) could block the IGF-1R-driven signal cascade in order to help slower cell growth, reduce clone formation, shorten S-phase, and inhibit invasion and migration of cells.

plus trastuzumab treated mice survived, while there was only one or fewer mice was still alive in other groups. For the IGF-1R is essentially expressed by most organs and tissues, therefore anti-IGF-1R antibody such as LMAb1 might have side-effects, which may influence the survival rate of mice as well as the anti-tumor effects. According

to the cell signaling assays shown in Figure 4F, LMAb1 could block the IGF-1 induced activation of pERK, pAKT and pIGF-1R along with the increase concentration of LMAb1, indicating that inhibition of PI3K-AKT as well as MAPK cascade might be one of the anti-tumor mechanisms of anti-IGF-1R antibody LMAb1.

Discussion

There are more and more antibody resistance clinical cases, while many patients with cancer do not respond to antibody treatment (*de novo* resistance). More and more patients who receive antibody treatment have the problem of the relapse and antibody resistance (acquired resistance). Some acquired antibody resistant cases showed low recurrence-free survival, cancer-related survival, and/or overall survival (OS), and high risk of local and distant recurrence.

Type I insulin-like growth factor receptor (IGF-1R) has been founded for decades for its role in growth and tumorigenesis [45]. Not until recently had advances in medicinal chemistry and biotechnology provided the tools for targeting the insulin-like growth factor (IGF) pathway in patients. IGF-1R belongs to the insulin receptor (IR) family that includes the IR, IGF-1R, IGF-1R/IR, and the mannose 6-phosphate receptor (also known as IGF-2R). IGF-1R can be activated by the ligands insulin-like growth factor-1 (IGF-1) or insulin-like growth factor-2 (IGF-2). Intracellular signaling of IGF-1R is mediated through IR substrates and Src-homology collagen protein (Shc) [46], which leads to activation of the mitogen-activated protein kinase (MAPK) pathway and the PI3K-AKT pathway [47]. IGF-1R is ubiquitously expressed in normal tissues and plays an important role in growth and various physiological functions, including those involving the cardiac and neurological systems, as well as glucose homeostasis. The influence on glucose probably occurs through feedback down-regulation of HGH by circulating IGF-1 and the local effect of IGF-1 on IGF-1R in the muscles or kidneys to promote glucose uptake [48,49].

Extensive *in vitro* and *in vivo* studies have implicated IGF-1R, IGF-1, and IGF-2 signaling in cancer development, progression, and maintenance. IGF-1R expression is critical for anchorage-independent growth, a well identified property of cancer cells. IGF-1 and IGF-2 are strong mitogens in a variety of cancer cell lines, including breast cancer [50-53], colon cancer [54,55], prostate cancer [56], and myeloma [57]. High circulating levels of IGF-1 have been associated with increased risk of prostate, breast, and colon cancers [45]. The IGF/IGF-1R pathway have been shown to have extensive cross-talk with the epidermal growth factor receptor (EGFR), estrogen receptor (ER) and human epidermal growth factor receptor 2 (HER2) signaling pathways and to play an important role in the resistance mechanisms of EGFR/HER2-targeted agents and cytotoxic drugs [58]. Recent work also indicated a potential role for IGF-1R in the resistance to RAF-MEK inhibitors [59] and mTOR inhibitors [60], however, there were rare report to show the importance of IGF-1R in antibody-resistant cases. IGF-1R can be founded in most solid tumors and hematological malignancies examined to date, and IGF-2 overexpression,

IGFBP modulations, and IGF-2R down-regulation have also been founded in cancer cells [46,61,62]. Nevertheless, unlike other growth factor receptors such as EGFR and HER-2, activating mutations of the IGF-1R gene have not been reported, and gene amplification is rare in the tumors that have been tested [63]. On the other hand, several genetic abnormalities can lead indirectly to IGF/IGF-1R overexpression and signaling. Some tumors, including hepatocellular carcinoma and breast cancer, have been associated with loss of heterozygosity of the *IGF2R* gene [64]. Loss of imprinting of IGF-2, first described in Wilms tumor, has since been identified in adult tumors and is associated with an increased risk of colon cancer [65,66]. These genetic changes may increase IGF-2 production or its bioavailability for IGF-1R signaling.

At least seven human or humanized anti-IGF-1R mAbs entered clinical trials: Cixutumumab [67-69], Figitumumab [70-74], Dalotuzumab [75-77], Ganitumab [78-81], R1507 [82], SCH. 717454 [83], AVE1642 [84,85] and BIIB022 [86], etc.. Common mechanisms of antibody action include blockade of the receptor from ligand binding and internalization/degradation of IGF-1R [87]. In addition, anti-IGF1R mAbs also down-regulate the IGF-1R/IR hybrid receptor [88]. Common treatment have emerged adverse events that include hyperglycemia.

IGF-1R signaling has been causally linked to *de novo* or acquired resistance to trastuzumab and EGFR-targeting agents in a lot of models. *In vitro* and *in vivo* tumor models have also demonstrated direct interactions between IGF-1R, EGFR/HER-2 [61,85-88], and co-localization of IGF-1R and HER-2. Treatment of resistant cells with IGF-1R inhibitors was shown to inhibit transactivation of HER2 and restore sensitivity to trastuzumab [89].

Our previous study reported the trastuzumab-resistant ovarian cancer cells, SKOV3-T, with lower HER2 and higher IGF-1R and HER3 expression level than parent SKOV3 cells. The two new biomarkers were suggested to be important in maintaining the cell growth [43]. According to our work, in SKOV3-T cells, epitope escaping might exist during long-term treatment with trastuzumab, which was possibly the main reason why SKOV3-T possessed resistant capacity to trastuzumab. When full length of HER2 gene was transfected into SKOV3-T, the sensitivity to trastuzumab could be recovered (data not shown); meanwhile, the IGF-1R expression level was up-regulated in SKOV3-T cells, which should be important to keep cell survival at the absence of HER2 (Figure 1). Here, we identified the role of IGF-1R in cell growth/proliferation, migration, cell cycling, clone formation, and *in vivo* carcinogenic character (Figures 2 and 3); Based on the data above, we prepared an IGF-1R mAb called LMAB1 to treat SKOV3-T. LMAB1 showed curative effect against the resistant cells; *In vivo* assays showed its effective anti-tumor function, especially when

being used in combination with trastuzumab, which was beneficial to higher survival rate of mice as well as smaller tumor. It was inferred that trastuzumab might ease the side-effect of LMAb1 *in vivo* with unknown reason, for mice treated with LMAb1 only didn't contribute to obvious longer survival time, although the tumor volume was indeed smaller than control group(s); besides, we also evidenced preliminarily that the mechanism of antibody included the inhibition of IGF-1R and downstream MAPK, AKT pathway activation (Figure 4). Similarly, we also use LMAb1 to treat MCF-7 cells, an IGF-1R-positive breast cancer cell line, which showed satisfactory anti-tumor activity by flow cytometry, cell proliferation and transwell *in vitro* (data not show).

Conclusion

In conclusion, we achieved satisfactory anti-tumor activity with combination therapy strategy, e.g. trastuzumab plus anti-IGF-1R mAb (LMAb1), in trastuzumab-resistant ovarian cancer model. According to our work, it should be inferred that in similar cases with resistance to a single antibody drug, not only acquired but also *de novo*, combination therapeutic strategies might achieve better curative effect.

Competing interests

The authors declare that they have no competing interests.

Authors' contributions

W carried out cell cloning, transwell and immunotherapy assays *in vivo*, ZY did cell cycling analysis and helped do *in vivo* carcinogenic assays, LM cultured cells and did clone screening, F did virus infection, P established the resistant cell line SKOV3-T, G did western blot assays, LZ participated in cell cultivation, ZT analyzed the results statistically, LX analyzed flow cytometry assays. S revised the manuscript, M helped design the study and draft the manuscript, Q designed the studies and prepared the MS. All authors have read and approved this final manuscript.

Acknowledgements

This work was supported by National Natural Sciences Foundation of China grant (No. 31370938, No.81272528, No. 30873083 and No. 81173082), National High Technology Research and Development Program (863 program, No. 2012AA02A302).

Author details

¹Laboratory of Cellular and Molecular Immunology, Institute of Immunology, Henan University, Kaifeng 475001, China. ²Laboratory of Immunology, Institute of Basic Medical Sciences, PO Box 130(3), Taiping Road #27, Beijing 100850, China. ³Department of Gynecology and Obstetrics, PLA General Hospital, Fuxing Road No. 28, Beijing 100853, China. ⁴Department of Environment and Pharmacy, Tianjin Institute of Health and Environmental Medicine, Beijing 100850, China.

Received: 29 July 2014 Accepted: 23 October 2014

Published online: 26 November 2014

References

1. Raval RR, Sharabi AB, Walker AJ, Drake CG, Sharma P: **Tumor immunology and cancer immunotherapy: summary of the 2013 SITC primer.** *J Immunother Cancer* 2014, **2**:14.
2. Slichenmyer WJ, Fry DW: **Anticancer therapy targeting the erbB family of receptor tyrosine kinases.** *Semin Oncol* 2001, **28**:67–79.
3. Schmidt M, Lewark B, Kohlschmidt N, Glawatz C, Steiner E, Tanner B, Pilch H, Weikel W, Kolbl H, Lehr HA: **Long-term prognostic significance of HER-2/neu in untreated node-negative breast cancer depends on the method of testing.** *Breast Cancer Res* 2005, **7**:R256–R266.
4. Ross JS, Fletcher JA: **The HER-2/neu oncogene in breast cancer: prognostic factor, predictive factor, and target for therapy.** *Oncologist* 1998, **3**:237–252.
5. Ladjemi MZ, Jacot W, Chardes T, Pelegri A, Navarro-Teulon I: **Anti-HER2 vaccines: new prospects for breast cancer therapy.** *Cancer Immunol Immunother* 2010, **59**:1295–1312.
6. Hynes NE, Stern DF: **The biology of erbB-2/neu/HER-2 and its role in cancer.** *Biochim Biophys Acta* 1994, **1198**:165–184.
7. Clynes RA, Towers TL, Presta LG, Ravetch JV: **Inhibitory Fc receptors modulate *in vivo* cytotoxicity against tumor targets.** *Nat Med* 2000, **6**:443–446.
8. Gennari R, Menard S, Fagnoni F, Ponchio L, Scelsi M, Tagliabue E, Castiglioni F, Villani L, Magalotti C, Gibelli N, Oliviero B, Ballardini B, Da Prada G, Zambelli A, Costa A: **Pilot study of the mechanism of action of preoperative trastuzumab in patients with primary operable breast tumors overexpressing HER2.** *Clin Cancer Res* 2004, **10**:5650–5655.
9. Arnould L, Gelly M, Penault-Llorca F, Benoit L, Bonnetain F, Migeon C, Cabaret V, Fermeaux V, Bertheau P, Garnier J, Jeannin JF, Coudert B: **Trastuzumab-based treatment of HER2-positive breast cancer: an antibody-dependent cellular cytotoxicity mechanism?** *Br J Cancer* 2006, **94**:259–267.
10. Piccart-Gebhart MJ, Procter M, Leyland-Jones B, Goldhirsch A, Untch M, Smith I, Gianni L, Baselga J, Bell R, Jackisch C, Cameron D, Dowsett M, Barrios CH, Steger G, Huang CS, Andersson M, Inbar M, Lichinitser M, Lang I, Nitz U, Iwata H, Thomssen K, Lohrisch C, Suter TM, Ruschoff J, Suto T, Greatorex V, Ward C, Straehle C, McFadden E, Dolci MS, Gelber RD: **Trastuzumab after adjuvant chemotherapy in HER2-positive breast cancer.** *N Engl J Med* 2005, **353**:1659–1672.
11. Mullen P, Cameron DA, Hasmann M, Smyth JF, Langdon SP: **Sensitivity to pertuzumab (2C4) in ovarian cancer models: cross-talk with estrogen receptor signaling.** *Mol Cancer Ther* 2007, **6**:93–100.
12. Agus DB, Akita RW, Fox WD, Lewis GD, Higgins B, Pisacane PI, Lofgren JA, Tindell C, Evans DP, Maiese K, Scher HI, Sliwkowski MX: **Targeting ligand-activated ErbB2 signaling inhibits breast and prostate tumor growth.** *Cancer Cell* 2002, **2**:127–137.
13. Jackson JG, St Clair P, Sliwkowski MX, Brattain MG: **Blockade of epidermal growth factor- or heregulin-dependent ErbB2 activation with the anti-ErbB2 monoclonal antibody 2C4 has divergent downstream signaling and growth effects.** *Cancer Res* 2004, **64**:2601–2609.
14. Nahta R, Hung MC, Esteva FJ: **The HER-2-targeting antibodies trastuzumab and pertuzumab synergistically inhibit the survival of breast cancer cells.** *Cancer Res* 2004, **64**:2343–2346.
15. Takai N, Jain A, Kawamata N, Popoviciu LM, Said JW, Whittaker S, Miyakawa I, Agus DB, Koeffler HP: **2C4, a monoclonal antibody against HER2, disrupts the HER kinase signaling pathway and inhibits ovarian carcinoma cell growth.** *Cancer* 2005, **104**:2701–2708.
16. Teicher BA, Doroshow JH: **The promise of antibody-drug conjugates.** *N Engl J Med* 2012, **367**:1847–1848.
17. Verma S, Miles D, Gianni L, Krop IE, Welslau M, Baselga J, Pegram M, Oh DY, Dieras V, Guardino E, Fang L, Lu MW, Olsen S, Blackwell K: **Trastuzumab emtansine for HER2-positive advanced breast cancer.** *N Engl J Med* 2012, **367**:1783–1791.
18. Tagliabue E, Campiglio M, Pupa SM, Menard S, Balsari A: **Activity and resistance of trastuzumab according to different clinical settings.** *Cancer Treat Rev* 2012, **38**:212–217.
19. Piccart M: **Circumventing *de novo* and acquired resistance to trastuzumab: new hope for the care of ErbB2-positive breast cancer.** *Clin Breast Cancer* 2008, **8**(Suppl 3):S100–S113.
20. Liebisch P, Eppinger S, Schopflin C, Stehle G, Munzert G, Dohner H, Schmid M: **CD44v6, a target for novel antibody treatment approaches, is frequently expressed in multiple myeloma and associated with deletion of chromosome arm 13q.** *Haematologica* 2005, **90**:489–493.
21. Richardson PG, Sonneveld P, Schuster MW, Irwin D, Stadtmauer EA, Facon T, Harousseau JL, Ben-Yehuda D, Lonial S, Goldschmidt H, Reece D, San-Miguel JF, Blade J, Boccadoro M, Cavenagh J, Dalton WS, Boral AL, Esseltine DL, Porter JB, Schenkein D, Anderson KC: **Bortezomib or high-dose dexamethasone for relapsed multiple myeloma.** *N Engl J Med* 2005, **352**:2487–2498.
22. Saltz LB, Meropol NJ, Loehrer PJ Sr, Needle MN, Kopit J, Mayer RJ: **Phase II trial of cetuximab in patients with refractory colorectal cancer that**

- expresses the epidermal growth factor receptor. *J Clin Oncol* 2004, **22**:1201–1208.
23. Cunningham D, Humblet Y, Siena S, Khayat D, Bleiberg H, Santoro A, Bets D, Mueser M, Harstrick A, Verslype C, Chau I, Van Cutsem E: **Cetuximab monotherapy and cetuximab plus irinotecan in irinotecan-refractory metastatic colorectal cancer.** *N Engl J Med* 2004, **351**:337–345.
 24. Lenz HJ, Van Cutsem E, Khambata-Ford S, Mayer RJ, Gold P, Stella P, Mirtsching B, Cohn AL, Pippas AW, Azarnia N, Tsuchihashi Z, Mauro DJ, Rowinsky EK: **Multicenter phase II and translational study of cetuximab in metastatic colorectal carcinoma refractory to irinotecan, oxaliplatin, and fluoropyrimidines.** *J Clin Oncol* 2006, **24**:4914–4921.
 25. Van Cutsem E, Peeters M, Siena S, Humblet Y, Hendlisz A, Neyns B, Canon JL, Van Laethem JL, Maurel J, Richardson G, Wolf M, Amado RG: **Open-label phase III trial of panitumumab plus best supportive care compared with best supportive care alone in patients with chemotherapy-refractory metastatic colorectal cancer.** *J Clin Oncol* 2007, **25**:1658–1664.
 26. Allegra CJ, Jessup JM, Somerfield MR, Hamilton SR, Hammond EH, Hayes DF, McAllister PK, Morton RF, Schilsky RL: **American Society of Clinical Oncology provisional clinical opinion: testing for KRAS gene mutations in patients with metastatic colorectal carcinoma to predict response to anti-epidermal growth factor receptor monoclonal antibody therapy.** *J Clin Oncol* 2009, **27**:2091–2096.
 27. Morton RF, Hammond EH: **ASCO provisional clinical opinion: KRAS, cetuximab, and panitumumab-clinical implications in colorectal cancer.** *J Oncol Pract* 2009, **5**:71–72.
 28. Sartore-Bianchi A, Di Nicolantonio F, Nichelatti M, Molinari F, De Dosso S, Saletti P, Martini M, Cipani T, Marrapese G, Mazzucchelli L, Lamba S, Veronese S, Frattini M, Bardelli A, Siena S: **Multi-determinants analysis of molecular alterations for predicting clinical benefit to EGFR-targeted monoclonal antibodies in colorectal cancer.** *PLoS One* 2009, **4**:e7287.
 29. Di Fiore F, Blanchard F, Charbonnier F, Le Pessot F, Lamy A, Galais MP, Bastit L, Killian A, Sesboue R, Tuech JJ, Queuniet AM, Paillot B, Sabourin JC, Michot F, Michel P, Frebourg T: **Clinical relevance of KRAS mutation detection in metastatic colorectal cancer treated by Cetuximab plus chemotherapy.** *Br J Cancer* 2007, **96**:1166–1169.
 30. De Roock W, Piessevaux H, De Schutter J, Janssens M, De Hertogh G, Personeni N, Biesmans B, Van Laethem JL, Peeters M, Humblet Y, Van Cutsem E, Tejpar S: **KRAS wild-type state predicts survival and is associated to early radiological response in metastatic colorectal cancer treated with cetuximab.** *Ann Oncol* 2008, **19**:508–515.
 31. Karapetis CS, Khambata-Ford S, Jonker DJ, O'Callaghan CJ, Tu D, Tebbutt NC, Simes RJ, Chalchal H, Shapiro JD, Robitaille S, Price TJ, Shepherd L, Au HJ, Langer C, Moore MJ, Zalberg JR: **K-ras mutations and benefit from cetuximab in advanced colorectal cancer.** *N Engl J Med* 2008, **359**:1757–1765.
 32. Lievre A, Bacht JB, Boige V, Cayre A, Le Corre D, Buc E, Ychou M, Bouche O, Landi B, Louvet C, Andre T, Bibeau F, Diebold MD, Rougier P, Ducreux M, Tomic G, Emile JF, Penault-Llorca F, Laurent-Puig P: **KRAS mutations as an independent prognostic factor in patients with advanced colorectal cancer treated with cetuximab.** *J Clin Oncol* 2008, **26**:374–379.
 33. Freeman DJ, Juan T, Reiner M, Hecht JR, Meropol NJ, Berlin J, Mitchell E, Sarosi I, Radinsky R, Amado RG: **Association of K-ras mutational status and clinical outcomes in patients with metastatic colorectal cancer receiving panitumumab alone.** *Clin Colorectal Cancer* 2008, **7**:184–190.
 34. Amado RG, Wolf M, Peeters M, Van Cutsem E, Siena S, Freeman DJ, Juan T, Sikorski R, Suggs S, Radinsky R, Patterson SD, Chang DD: **Wild-type KRAS is required for panitumumab efficacy in patients with metastatic colorectal cancer.** *J Clin Oncol* 2008, **26**:1626–1634.
 35. Perkins G, Lievre A, Ramacci C, Meatchi T, de Reynies A, Emile JF, Boige V, Tomic G, Bacht JB, Bibeau F, Bouche O, Penault-Llorca F, Merlin JL, Laurent-Puig P: **Additional value of EGFR downstream signaling phosphoprotein expression to KRAS status for response to anti-EGFR antibodies in colorectal cancer.** *Int J Cancer* 2010, **127**:1321–1331.
 36. Lievre A, Bacht JB, Le Corre D, Boige V, Landi B, Emile JF, Cote JF, Tomic G, Penna C, Ducreux M, Rougier P, Penault-Llorca F, Laurent-Puig P: **KRAS mutation status is predictive of response to cetuximab therapy in colorectal cancer.** *Cancer Res* 2006, **66**:3992–3995.
 37. Saridakis Z, Tzardi M, Papadakis C, Sfakianaki M, Pega F, Kalikaki A, Tsakalaki E, Trypaki M, Messaritakis I, Stathopoulos E, Mavroudis D, Georgoulas V, Souglakos J: **Impact of KRAS, BRAF, PIK3CA mutations, PTEN, AREG, EREG expression and skin rash in >= 2 line cetuximab-based therapy of colorectal cancer patients.** *PLoS One* 2011, **6**:e15980.
 38. Geyer CE, Forster J, Lindquist D, Chan S, Romieu CG, Pienkowski T, Jagiello-Gruszfeld A, Crown J, Chan A, Kaufman B, Skarlos D, Campone M, Davidson N, Berger M, Oliva C, Rubin SD, Stein S, Cameron D: **Lapatinib plus capecitabine for HER2-positive advanced breast cancer.** *N Engl J Med* 2006, **355**:2733–2743.
 39. von Minckwitz G, du Bois A, Schmidt M, Maass N, Cufer T, de Jongh FE, Maertense E, Zielinski C, Kaufmann M, Bauer W, Baumann KH, Clemens MR, Duerr R, Uleer C, Andersson M, Stein RC, Nekljudova V, Loibl S: **Trastuzumab beyond progression in human epidermal growth factor receptor 2-positive advanced breast cancer: a german breast group 26/ breast international group 03–05 study.** *J Clin Oncol* 2009, **27**:1999–2006.
 40. Hurwitz H, Fehrenbacher L, Novotny W, Cartwright T, Hainsworth J, Heim W, Berlin J, Baron A, Griffing S, Holmgren E, Ferrara N, Fyfe G, Rogers B, Ross R, Kabbinavar F: **Bevacizumab plus irinotecan, fluorouracil, and leucovorin for metastatic colorectal cancer.** *N Engl J Med* 2004, **350**:2335–2342.
 41. Sandler A, Gray R, Perry MC, Brahmer J, Schiller JH, Dowlati A, Lilienbaum R, Johnson DH: **Paclitaxel-carboplatin alone or with bevacizumab for non-small-cell lung cancer.** *N Engl J Med* 2006, **355**:2542–2550.
 42. Valachis A, Polyzos NP, Patsopoulos NA, Georgoulas V, Mavroudis D, Mauri D: **Bevacizumab in metastatic breast cancer: a meta-analysis of randomized controlled trials.** *Breast Cancer Res Treat* 2010, **122**:1–7.
 43. Jia Y, Zhang Y, Qiao C, Liu G, Zhao Q, Zhou T, Chen G, Li Y, Feng J, Zhang Q, Peng H: **IGF-1R and ErbB3/HER3 contribute to enhanced proliferation and carcinogenesis in trastuzumab-resistant ovarian cancer model.** *Biochem Biophys Res Commun* 2013, **436**:740–745.
 44. Yang T, Burrows C, Park JH: **Development of a doxycycline-inducible lentiviral plasmid with an instant regulatory feature.** *Plasmid* 2014, **72**:29–35.
 45. Pollak M: **Insulin and insulin-like growth factor signalling in neoplasia.** *Nat Rev Cancer* 2008, **8**:915–928.
 46. Baserga R: **The IGF-I receptor in cancer research.** *Exp Cell Res* 1999, **253**:1–6.
 47. Pollak MN, Schernhammer ES, Hankinson SE: **Insulin-like growth factors and neoplasia.** *Nat Rev Cancer* 2004, **4**:505–518.
 48. Clemmons DR: **Involvement of insulin-like growth factor-I in the control of glucose homeostasis.** *Curr Opin Pharmacol* 2006, **6**:620–625.
 49. LeRoith D, Yakar S: **Mechanisms of disease: metabolic effects of growth hormone and insulin-like growth factor 1.** *Nat Clin Pract Endocrinol Metab* 2007, **3**:302–310.
 50. Cullen KJ, Yee D, Sly WS, Perdue J, Hampton B, Lippman ME, Rosen N: **Insulin-like growth factor receptor expression and function in human breast cancer.** *Cancer Res* 1990, **50**:48–53.
 51. Gooch JL, Van Den Berg CL, Yee D: **Insulin-like growth factor (IGF)-I rescues breast cancer cells from chemotherapy-induced cell death—proliferative and anti-apoptotic effects.** *Breast Cancer Res Treat* 1999, **56**:1–10.
 52. Lee AV, Yee D: **Insulin-like growth factors and breast cancer.** *Biomed Pharmacother* 1995, **49**:415–421.
 53. Peyrat JP, Bonnetterre J: **Type 1 IGF receptor in human breast diseases.** *Breast Cancer Res Treat* 1992, **22**:59–67.
 54. Hassan AB, Macaulay VM: **The insulin-like growth factor system as a therapeutic target in colorectal cancer.** *Ann Oncol* 2002, **13**:349–356.
 55. Wu Y, Yakar S, Zhao L, Hennighausen L, LeRoith D: **Circulating insulin-like growth factor-I levels regulate colon cancer growth and metastasis.** *Cancer Res* 2002, **62**:1030–1035.
 56. Nickerson T, Chang F, Lorimer D, Smeekens SP, Sawyers CL, Pollak M: **In vivo progression of LAPC-9 and LNCaP prostate cancer models to androgen independence is associated with increased expression of insulin-like growth factor I (IGF-I) and IGF-I receptor (IGF-IR).** *Cancer Res* 2001, **61**:6276–6280.
 57. Ge NL, Rudikoff S: **Insulin-like growth factor I is a dual effector of multiple myeloma cell growth.** *Blood* 2000, **96**:2856–2861.
 58. Gee JM, Robertson JF, Gutteridge E, Ellis IO, Pinder SE, Rubini M, Nicholson RI: **Epidermal growth factor receptor/HER2/insulin-like growth factor receptor signalling and oestrogen receptor activity in clinical breast cancer.** *Endocr Relat Cancer* 2005, **12**(Suppl 1):S99–S111.
 59. Villanueva J, Vultur A, Lee JT, Somasundaram R, Fukunaga-Kalabis M, Cipolla AK, Wubbenhorst B, Xu X, Gimotty PA, Kee D, Santiago-Walker AE, Letrero R, D'Andrea K, Pushparajan A, Hayden JE, Brown KD, Laquerre S, McArthur GA, Sosman JA, Nathanson KL, Herlyn M: **Acquired resistance to BRAF inhibitors mediated by a RAF kinase switch in melanoma can be overcome by cotargeting MEK and IGF-1R/PI3K.** *Cancer Cell* 2010, **18**:683–695.

60. Shin DH, Min HY, El-Naggar AK, Lippman SM, Glisson B, Lee HY: **Akt/mTOR counteract the antitumor activities of cixutumumab, an anti-insulin-like growth factor I receptor monoclonal antibody.** *Mol Cancer Ther* 2011, **10**:2437–2448.
61. Iravani S, Zhang HQ, Yuan ZQ, Cheng JQ, Karl RC, Jove R, Coppola D: **Modification of insulin-like growth factor 1 receptor, c-Src, and Bcl-XL protein expression during the progression of Barrett's neoplasia.** *Hum Pathol* 2003, **34**:975–982.
62. LeRoith D, Baserga R, Helman L, Roberts CT Jr: **Insulin-like growth factors and cancer.** *Ann Intern Med* 1995, **122**:54–59.
63. Berns EM, Klijn JG, van Staveren IL, Portengen H, Foekens JA: **Sporadic amplification of the insulin-like growth factor 1 receptor gene in human breast tumors.** *Cancer Res* 1992, **52**:1036–1039.
64. De Souza AT, Hankins GR, Washington MK, Fine RL, Orton TC, Jirtle RL: **Frequent loss of heterozygosity on 6q at the mannose 6-phosphate/insulin-like growth factor II receptor locus in human hepatocellular tumors.** *Oncogene* 1995, **10**:1725–1729.
65. Cui H, Cruz-Correa M, Giardiello FM, Hutcheon DF, Kafonek DR, Brandenburg S, Wu Y, He X, Powe NR, Feinberg AP: **Loss of IGF2 imprinting: a potential marker of colorectal cancer risk.** *Science* 2003, **299**:1753–1755.
66. Kaneda A, Feinberg AP: **Loss of imprinting of IGF2: a common epigenetic modifier of intestinal tumor risk.** *Cancer Res* 2005, **65**:11236–11240.
67. Abou-Alfa GK, Capanu M, O'Reilly EM, Ma J, Chou JF, Gansukh B, Shia J, Kalin M, Katz S, Abad L, Reidy-Lagunes DL, Kelsen DP, Chen HX, Saltz LB: **A phase II study of cixutumumab (IMC-A12, NSC742460) in advanced hepatocellular carcinoma.** *J Hepatol* 2014, **60**:319–324.
68. Attias-Geva Z, Bentov I, Ludwig DL, Fishman A, Bruchim I, Werner H: **Insulin-like growth factor-1 receptor (IGF-IR) targeting with monoclonal antibody cixutumumab (IMC-A12) inhibits IGF-I action in endometrial cancer cells.** *Eur J Cancer* 2011, **47**:1717–1726.
69. Rowinsky EK, Youssoufian H, Tonra JR, Solomon P, Burtrum D, Ludwig DL: **IMC-A12, a human IgG1 monoclonal antibody to the insulin-like growth factor I receptor.** *Clin Cancer Res* 2007, **13**:5549s–5555s.
70. Chi KN, Gleave ME, Fazli L, Goldenberg SL, So A, Kollmannsberger C, Murray N, Tinker A, Pollak M: **A phase II pharmacodynamic study of preoperative figitumumab in patients with localized prostate cancer.** *Clin Cancer Res* 2012, **18**:3407–3413.
71. de Bono JS, Piulats JM, Pandha HS, Petrylak DP, Saad F, Aparicio LM, Sandhu SK, Fong P, Gillissen S, Hudes GR, Wang T, Scranton J, Pollak MN: **Phase II randomized study of figitumumab plus docetaxel and docetaxel alone with crossover for metastatic castration-resistant prostate cancer.** *Clin Cancer Res* 2014, **20**:1925–1934.
72. Gualberto A, Karp DD: **Development of the monoclonal antibody figitumumab, targeting the insulin-like growth factor-1 receptor, for the treatment of patients with non-small-cell lung cancer.** *Clin Lung Cancer* 2009, **10**:273–280.
73. Langer CJ, Novello S, Park K, Krzakowski M, Karp DD, Mok T, Benner RJ, Scranton JR, Olszanski AJ, Jassem J: **Randomized, phase III trial of first-line figitumumab in combination with paclitaxel and carboplatin versus paclitaxel and carboplatin alone in patients with advanced non-small-cell lung cancer.** *J Clin Oncol* 2014, **32**:2059–2066.
74. Schmitz S, Kaminsky-Forrett MC, Henry S, Zanetta S, Geoffrois L, Bompas E, Moxhon A, Mignon L, Guigay J, Knoops L, Hamoir M, Machiels JP: **Phase II study of figitumumab in patients with recurrent and/or metastatic squamous cell carcinoma of the head and neck: clinical activity and molecular response (GORTEC 2008–02).** *Ann Oncol* 2012, **23**:2153–2161.
75. Atzori F, Tabernero J, Cervantes A, Prudkin L, Andreu J, Rodriguez-Braun E, Domingo A, Guijarro J, Gamez C, Rodon J, Di Cosimo S, Brown H, Clark J, Hardwick JS, Beckman RA, Hanley WD, Hsu K, Calvo E, Rosello S, Langdon RB, Baselga J: **A phase I pharmacokinetic and pharmacodynamic study of dalotuzumab (MK-0646), an anti-insulin-like growth factor-1 receptor monoclonal antibody, in patients with advanced solid tumors.** *Clin Cancer Res* 2011, **17**:6304–6312.
76. Ellis PM, Shepherd FA, Laurie SA, Goss GD, Olivo M, Powers J, Seymour L, Bradbury PA: **NCIC CTG IND.190 phase I trial of dalotuzumab (MK-0646) in combination with cisplatin and etoposide in extensive-stage small-cell lung cancer.** *J Thorac Oncol* 2014, **9**:410–413.
77. Scartozzi M, Bianconi M, Maccaroni E, Giampieri R, Berardi R, Cascinu S: **Dalotuzumab, a recombinant humanized mAb targeted against IGFR1 for the treatment of cancer.** *Curr Opin Mol Ther* 2010, **12**:361–371.
78. Beltran PJ, Calzone FJ, Mitchell P, Chung YA, Cajulis E, Moody G, Belmontes B, Li CM, Vonderfecht S, Velculescu VE, Yang G, Qi J, Slamon DJ, Konecny GE: **Ganitumab (AMG 479) inhibits IGF-II-dependent ovarian cancer growth and potentiates platinum-based chemotherapy.** *Clin Cancer Res* 2014, **20**:2947–2958.
79. Strosberg JR, Chan JA, Ryan DP, Meyerhardt JA, Fuchs CS, Abrams T, Regan E, Brady R, Weber J, Campos T, Kvols LK, Kulke MH: **A multi-institutional, phase II open-label study of ganitumab (AMG 479) in advanced carcinoid and pancreatic neuroendocrine tumors.** *Endocr Relat Cancer* 2013, **20**:383–390.
80. Tap WD, Demetri G, Barnette P, Desai J, Kavan P, Tozer R, Benedetto PW, Friberg G, Deng H, McCaffery I, Leitch I, Badola S, Chang S, Zhu M, Tolcher A: **Phase II study of ganitumab, a fully human anti-type-1 insulin-like growth factor receptor antibody, in patients with metastatic Ewing family tumors or desmoplastic small round cell tumors.** *J Clin Oncol* 2012, **30**:1849–1856.
81. Van Cutsem E, Eng C, Nowara E, Swieboda-Sadlej A, Tebbutt N, Mitchell EP, Davidenko I, Stephenson J, Elez ME, Preen H, Deng H, Tang R, McCaffery I, Oliner K, Chen L, Gansert JL, Loh E, Smethurst D, Tabernero J: **Randomized phase Ib/II trial of rilotumumab or ganitumab with panitumumab versus panitumumab alone in patients with wild-type KRAS metastatic colorectal cancer.** *Clin Cancer Res* 2014, **20**:4240–4250.
82. Pappo AS, Patel SR, Crowley J, Reinke DK, Kuenkele KP, Chawla SP, Toner GC, Maki RG, Meyers PA, Chugh R, Ganjoo KN, Schuetze SM, Juergens H, Leahy MG, Georger B, Benjamin RS, Helman LJ, Baker LH: **R1507, a monoclonal antibody to the insulin-like growth factor 1 receptor, in patients with recurrent or refractory Ewing sarcoma family of tumors: results of a phase II Sarcoma Alliance for Research through Collaboration study.** *J Clin Oncol* 2011, **29**:4541–4547.
83. Lin EH, Lenz HJ, Saleh MN, Mackenzie MJ, Knost JA, Pathiraja K, Langdon RB, Yao SL, Lu BD: **A randomized, phase II study of the anti-insulin-like growth factor receptor type 1 (IGF-1R) monoclonal antibody robatumumab (SCH 717454) in patients with advanced colorectal cancer.** *Cancer Med* 2014, **29**:4541–4547.
84. Macaulay VM, Middleton MR, Protheroe AS, Tolcher A, Dieras V, Sessa C, Bahleda R, Blay JY, LoRusso P, Mery-Mignard D, Soria JC: **Phase I study of humanized monoclonal antibody AVE1642 directed against the type 1 insulin-like growth factor receptor (IGF-1R), administered in combination with anticancer therapies to patients with advanced solid tumors.** *Ann Oncol* 2013, **24**:784–791.
85. Moreau P, Cavallo F, Leleu X, Hulin C, Amiot M, Descamps G, Facon T, Boccadoro M, Mignard D, Harousseau JL: **Phase I study of the anti insulin-like growth factor 1 receptor (IGF-1R) monoclonal antibody, AVE1642, as single agent and in combination with bortezomib in patients with relapsed multiple myeloma.** *Leukemia* 2011, **25**:872–874.
86. von Mehren M, Britten CD, Pieslor P, Saville W, Vassos A, Harris S, Galluppi GR, Darif M, Wainberg ZA, Cohen RB, Leong S: **A phase 1, open-label, dose-escalation study of BIIB022 (anti-IGF-1R monoclonal antibody) in subjects with relapsed or refractory solid tumors.** *Invest New Drugs* 2014, **32**:518–525.
87. Burtrum D, Zhu Z, Lu D, Anderson DM, Prewett M, Pereira DS, Bassi R, Abdullah R, Hooper AT, Koo H, Jimenez X, Johnson D, Apblett R, Kussie P, Bohlen P, Witte L, Hicklin DJ, Ludwig DL: **A fully human monoclonal antibody to the insulin-like growth factor I receptor blocks ligand-dependent signaling and inhibits human tumor growth in vivo.** *Cancer Res* 2003, **63**:8912–8921.
88. Cohen BD, Baker DA, Soderstrom C, Tkalecic G, Rossi AM, Miller PE, Tengowski MW, Wang F, Gualberto A, Beebe JS, Moyer JD: **Combination therapy enhances the inhibition of tumor growth with the fully human anti-type 1 insulin-like growth factor receptor monoclonal antibody CP-751,871.** *Clin Cancer Res* 2005, **11**:2063–2073.
89. Nahta R, Yuan LX, Zhang B, Kobayashi R, Esteva FJ: **Insulin-like growth factor-1 receptor/human epidermal growth factor receptor 2 heterodimerization contributes to trastuzumab resistance of breast cancer cells.** *Cancer Res* 2005, **65**:11118–11128.

doi:10.1186/s13048-014-0103-5

Cite this article as: Wang et al.: Anti-IGF-1R monoclonal antibody inhibits the carcinogenicity activity of acquired trastuzumab-resistant SKOV3. *Journal of Ovarian Research* 2014 **7**:103.