

# PKA-independent cAMP stimulation of white adipocyte exocytosis and adipokine secretion: modulations by $\text{Ca}^{2+}$ and ATP

Ali M. Komai<sup>1</sup>, Cecilia Brännmark<sup>2</sup>, Saliha Musovic<sup>1</sup> and Charlotta S. Olofsson<sup>1</sup>

<sup>1</sup>Department of Physiology/Metabolic Physiology, Institute of Neuroscience and Physiology, The Sahlgrenska Academy at University of Gothenburg, Medicinaregatan 11, SE-405 30 Göteborg, Sweden

<sup>2</sup>Discovery Sciences, AstraZeneca R&D, Pepparedsleden 1, SE43153 Mölndal, Sweden

## Key points

- The molecular and cellular mechanisms involved in short-term regulation of white adipocyte adipokine release remain elusive.
- Here we have examined effects of intracellular cAMP,  $\text{Ca}^{2+}$  and ATP on exocytosis and adipokine secretion by a combination of membrane capacitance patch-clamp recordings and biochemical measurements of secreted adipokines.
- Our findings show that white adipocyte exocytosis is stimulated by cAMP/Epac (exchange proteins activated by cAMP)-dependent but  $\text{Ca}^{2+}$ - and PKA-independent mechanisms and can largely be correlated to release of adiponectin vesicles residing in a readily releasable vesicle pool.
- A combination of  $\text{Ca}^{2+}$  and ATP augments exocytosis/adiponectin secretion via a direct action on the release process and by recruitment of new releasable vesicles.
- Our results elucidate several previously unknown cellular mechanisms involved in regulation of white adipocyte exocytosis/secretion. The well-established disturbances of adipokine secretion in obese individuals highlight the significance of understanding how white adipocyte adipokine release is controlled.

**Abstract** We examined the effects of cAMP,  $\text{Ca}^{2+}$  and ATP on exocytosis and adipokine release in white adipocytes by a combination of membrane capacitance patch-clamp recordings and biochemical measurements of adipokine secretion. 3T3-L1 adipocyte exocytosis proceeded even in the complete absence of intracellular  $\text{Ca}^{2+}$  ( $[\text{Ca}^{2+}]_i$ ; buffered with BAPTA) provided cAMP (0.1 mM) was included in the intracellular (pipette-filling) solution. Exocytosis typically plateaued within ~10 min, probably signifying depletion of a releasable vesicle pool. Inclusion of 3 mM ATP in combination with elevation of  $[\text{Ca}^{2+}]_i$  to  $\geq 700$  nM augmented the rate of cAMP-evoked exocytosis ~2-fold and exocytosis proceeded for longer periods ( $\geq 20$  min) than with cAMP alone. Exocytosis was stimulated to a similar extent upon substitution of cAMP by the Epac (exchange proteins activated by cAMP) agonist 8-Br-2'-O-Me-cAMP (1 mM included in the pipette solution). Inhibition of protein kinase A (PKA) by addition of Rp-cAMPS (0.5 mM) to the cAMP-containing pipette solution was without effect. A combination of the adenylate cyclase activator forskolin (10  $\mu\text{M}$ ) and the phosphodiesterase inhibitor IBMX (200  $\mu\text{M}$ ; forsk–IBMX) augmented adiponectin secretion measured over 30 min 3-fold and 2-fold in 3T3-L1 and human subcutaneous adipocytes, respectively. This effect was unaltered by pre-loading of cells with the  $\text{Ca}^{2+}$  chelator BAPTA-AM and 2-fold amplified upon inclusion of the  $\text{Ca}^{2+}$  ionophore ionomycin (1  $\mu\text{M}$ ) in the extracellular solution. Adiponectin release was also stimulated by the membrane-permeable Epac agonist 8-Br-2'-O-Me-cAMP-AM but unaffected by inclusion

of the membrane-permeable PKA inhibitor Rp-8-Br-cAMPS (200  $\mu\text{M}$ ). The adipokines leptin, resistin and apelin were present in low amounts in the incubation medium (1–6% of measured adiponectin). Adipsin was secreted in substantial quantities (50% of adiponectin concentration) but release of this adipokine was unaffected by forsk–IBMX. We propose that white adipocyte exocytosis is stimulated by cAMP/Epac-dependent but  $\text{Ca}^{2+}$ - and PKA-independent release of vesicles residing in a readily releasable pool and that the release is augmented by a combination of  $\text{Ca}^{2+}$  and ATP. We further suggest that secreted vesicles chiefly contain adiponectin.

(Resubmitted 2 July 2014; accepted after revision 1 September 2014; first published online 5 September 2014)

**Corresponding author** C. Olofsson: University of Gothenburg, The Sahlgrenska Academy, Department of Neuroscience and Physiology, Section of Metabolic Physiology, Box 432, SE-405 30 Göteborg, Sweden. Email: charlotta.olofsson@physiol.gu.se

**Abbreviations** 8-Br-2'-O-Me-cAMP, 8-Bromo-2-O-methyladenosine-3', 5'-cyclic monophosphate;  $C_m$ , membrane capacitance;  $\Delta C_{\text{tot}}$ , total capacitance increase;  $\Delta C/\Delta t$ , exocytotic rate; EC, extracellular solution; Epac, exchange proteins activated by cAMP; Glut4, glucose transporter type 4; IBMX, 3-isobutyl-1-methylxanthine; PKA, protein kinase A; Rp-8-Br-cAMPS, 8-bromoadenosine-3', 5'-cyclic monophosphorothioate, Rp-isomer; Rp-cAMPS, (R)-adenosine, cyclic 3', 5'-(hydrogenphosphorothioate) triethylammonium

## Introduction

White adipose tissue, traditionally regarded as a tissue primarily involved in lipid storage, has in recent years been increasingly recognised to be an endocrine organ that expresses and secretes a variety of bioactive molecules with auto-, para- and endocrine functions. Secreted products, collectively known as *adipokines*, are known to play important roles in energy homeostasis as well as in inflammatory responses (Trujillo & Scherer, 2006; Maury & Brichard, 2010). With increasing weight, adipose tissue disturbances arise resulting in dysregulated adipokine secretion. Although the secretion of almost every known adipokine is disturbed in obesity (Maury & Brichard, 2010), the molecular and cellular mechanisms involved in short-term regulation of adipokine release remain poorly characterised. Given the severe medical consequences of obesity, including type-2 diabetes, hypertension and cardiovascular disease (Hevener & Febbraio, 2009), the significance of understanding regulatory mechanisms and intracellular mediators involved in white adipocyte adipokine secretion is evident.

Adiponectin is an adipokine exclusively secreted from mature adipocytes, with insulin-sensitising, fat-burning, anti-inflammatory and anti-oxidant properties. Plasma adiponectin levels are decreased in obesity, due to disturbances of both production and secretion of the adipokine (Hoffstedt *et al.* 2004; Maury & Brichard, 2010; Kovacova *et al.* 2012). Elevated adiponectin levels have been shown to have a protective role in the development of type-2 diabetes (Spranger *et al.* 2003). Most investigations aimed at elucidating regulatory mechanisms involved in adipokine secretion are conducted as long-term (several hours or days) studies. Shorter-term ( $\leq 4$  h) regulation has been investigated in a few studies and release of

adiponectin was found to be triggered by insulin (Bogan & Lodish, 1999; Cong *et al.* 2007; Szkudelski, 2007; Xie *et al.* 2008), to involve phosphoinositide 3-kinase signalling (Cong *et al.* 2007) and to depend on an elevation of the cytoplasmic  $\text{Ca}^{2+}$  concentration ( $[\text{Ca}^{2+}]_i$ ; Bogan & Lodish, 1999). Adiponectin has been suggested to be targeted to a regulatory secretory pathway (Bogan & Lodish, 1999; Xie *et al.* 2008) but the regulation of its secretion is inadequately investigated.

The term 'stimulus–secretion coupling' is used to describe events occurring in neuroendocrine cells when exposed to an immediate stimulus leading to release of a secretory product (Kits & Mansvelter, 2000). In most neuroendocrine cells, an elevation of  $[\text{Ca}^{2+}]_i$  is the trigger for secretion of hormone or neuropeptide-containing vesicles via regulated exocytosis (Burgoyne & Morgan, 2003). In addition to the triggering signal, the  $\text{Ca}^{2+}$ -dependent secretion is modulated by several intracellular mediators such as cAMP and ATP and requires the interaction of numerous proteins involved in secretory vesicle exocytosis (reviewed in Burgoyne & Morgan, 2003; Seino & Shibasaki, 2005). However, both the cellular mechanisms and the mediators involved in white adipocyte stimulus–secretion coupling remain unknown.

Here we have used *in vitro* differentiated 3T3-L1 cells, an extensively characterised model of white adipocytes, as well as *ex vivo* primary human subcutaneous adipocytes. We report, for the first time, how white adipocyte exocytosis is affected by the intracellular mediators  $\text{Ca}^{2+}$ , cAMP and ATP. Exocytosis, monitored as increases in membrane capacitance (Lindau & Neher, 1988), was compared to measurements of short-term (30 min) secretion of the adipokines adiponectin, leptin, resistin, apelin and adipsin. Our study is, to the best of our knowledge, the first where adipokine secretion

is investigated using this methodology. We show that although exocytosis in white adipocytes shares some characteristics with archetypal endocrine cell types, there are important differences. Thus, white adipocyte exocytosis is stimulated by cAMP whilst  $\text{Ca}^{2+}$  and ATP exert modulatory effects. cAMP triggers exocytosis also in the complete absence of intracellular  $\text{Ca}^{2+}$  and stimulation occurs mainly via a PKA-independent pathway involving Epac (exchange proteins activated by cAMP). We further demonstrate that a large fraction of the vesicles may be released in an ATP-independent fashion. Our results show that exocytosis measured as increase in membrane capacitance can to a large extent be functionally correlated with release of significant quantities of adiponectin.

## Methods

### Ethical approval

For experiments with human adipocytes, all subjects gave their informed consent. The procedures were approved by the Regional Ethical Review Board, University of Gothenburg and were carried out in compliance with the Declaration of Helsinki.

### 3T3-L1 cell culture

3T3-L1 cells were maintained as subconfluent cultures in DMEM (high-glucose,  $4500 \text{ mg l}^{-1}$ ; Life Technologies, Stockholm, Sweden) containing 10% fetal bovine serum (FBS Gold; PAA laboratories) and 1% penicillin–streptomycin (medium 1; Life Technologies). Differentiation was carried out according to established procedures (Kohn *et al.* 1996). Briefly, cells were grown to confluence (day 0) and thereafter incubated in medium 1 supplemented with  $1 \mu\text{M}$  dexamethasone,  $850 \text{ nM}$  insulin, and  $0.5 \text{ mM}$  3-isobutyl-1-methylxanthine (IBMX). After 48 h (day 2) the medium was changed to medium 1 supplemented with insulin only. After an additional 48 h (day 4) the medium was then replaced by medium 1 alone. The medium was thereafter freshly replaced every 2 days. Experimental studies were performed in mature 3T3-L1 adipocytes (determined by occurrence of large lipid droplets; see Fig. 1A) between days 8 and 10 from the start of differentiation. All cell culture reagents were purchased from Sigma-Aldrich, MO, USA, unless otherwise specified.

### Isolation of human adipocytes

Human adipocytes were isolated from subcutaneous adipose tissue biopsies taken during skin reduction surgery under general anaesthesia at the Sahlgrenska University Hospital, Gothenburg, Sweden. The subjects were women with a mean age of 35.3 years (range 35–36) and

mean BMI of 24.9 (range 23.6–26.7). Subjects had lost weight by gastric bypass or reduced caloric intake, mean weight reduction being 35 kg (range 18–57 kg). The biopsies were transported in a heated container prior to cell isolation. Adipocyte isolation was performed as described previously (Stralfors & Honnor, 1989), with small modifications. Briefly, adipose tissue was minced and degraded using collagenase type 1 (Worthington, USA) and filtered through a nylon mesh. Adipocytes were washed by flotation in a Krebs–Ringer solution containing (in mM) 120 NaCl, 4.7 KCl, 2.5  $\text{CaCl}_2$ , 1.2  $\text{MgSO}_4$ , 1.2  $\text{KH}_2\text{PO}_4$ , 20 Hepes (pH 7.4). The solution was supplemented with 1% (w/v) fatty acid-free bovine serum albumin,  $100 \text{ nM}$  phenylisopropyladenosine,  $0.5 \text{ U ml}^{-1}$  adenosine deaminase with 2 mM glucose. Cells were subsequently incubated overnight ( $37^\circ\text{C}$  and 5%  $\text{CO}_2$ ) in the same solution mixed with an equal volume of DMEM containing 7% (w/v) albumin,  $200 \text{ nM}$  adenosine, 20 mM Hepes,  $50 \text{ U ml}^{-1}$  penicillin and  $50 \text{ U ml}^{-1}$  streptomycin (pH 7.4).

### Electrophysiology and $[\text{Ca}^{2+}]_i$ imaging

3T3-L1 adipocytes, grown in plastic (Nunc, Denmark) or glass (MatTek Corporation, USA) Petri culture dishes, were continuously superfused during the recordings with an extracellular solution (EC) containing (in mM): 140 NaCl, 3.6 KCl, 2  $\text{NaHCO}_3$ , 0.5  $\text{NaH}_2\text{PO}_4$ , 0.5  $\text{MgSO}_4$ , 5 Hepes (pH 7.4 with NaOH), 2.6  $\text{CaCl}_2$  supplemented with 5 mM glucose.

Exocytosis, measured as increase in membrane capacitance (Lindau & Neher, 1988), was studied with the whole-cell configuration of the patch-clamp technique using an EPC-9 patch-clamp amplifier (HEKA Electronics, Lambrecht/Pfalz, Germany) and PatchMaster software. Patch pipettes were prepared from borosilicate glass capillaries coated with Sylgard (Dow Corning, USA) and heat-polished prior to use. The pipette resistance ranged between 3 and 5  $\text{M}\Omega$  when filled with pipette-filling solution. Access and seal resistances during the recordings were typically  $<15 \text{ M}\Omega$  and  $>1 \text{ G}\Omega$ , respectively. Cells were clamped at  $-70 \text{ mV}$ . The pipette-filling solutions consisted of (in mM): 125 potassium glutamate, 10 KCl, 10 NaCl, 1  $\text{MgCl}_2$ , 5 Hepes (pH 7.15 with KOH). The solutions were prepared containing different  $\text{Ca}^{2+}$ -EGTA or -BAPTA mixtures to achieve varying  $[\text{Ca}^{2+}]_i$  and were supplemented with Mg-ATP and/or cAMP, Rp-cAMPS (Tocris) or 8-Br-2-O-Me-cAMP (Biolog Life Science Institute, GmbH, Germany) as specified.

Alterations of the intracellular  $\text{Ca}^{2+}$  concentration ( $[\text{Ca}^{2+}]_i$ ) were recorded with dual-wavelength ratio imaging as previously described (Astrom-Olsson *et al.* 2012). Briefly, 3T3-L1 adipocytes were loaded for 1.5 h at room temperature with  $2 \mu\text{M}$  Fura-2 AM together with 0.02% Pluronic F-127 (wt/vol, Life Technologies).

A Lambda DG-4 illumination system was employed (Sutter Instrument Company, USA) together with a Nikon Diaphot 300 inverted microscope (Nikon, Japan). Image capturing was performed using a QuantEM 512SC CCD camera (Photometrics, USA) and Metafluor software (Meta imaging series 7.5, Molecular Devices, USA). The excitation wavelengths were 340 and 380 nm and emitted light was collected at 510 nm. The  $[Ca^{2+}]_i$  was determined using Eqn (5) of Gryniewicz *et al.* 1985 and a  $K_d$  of 224 nM.

Measurements were carried out at 32°C.

### Adipokine secretion in 3T3-L1 adipocytes

3T3-L1 adipocytes were grown and differentiated on 6- or 12-well plates (Sarstedt). Cells were washed and pre-incubated for 30 min in EC without glucose, in the presence or absence of BAPTA-AM (Life Technologies) or Rp-8-Br-cAMPS (Biolog Life Science Institute) as indicated. Subsequently, EC supplemented with test substances as specified was added and cells were incubated with gentle shaking for 30 min. Incubations were carried out at 32°C. At the end of the incubation the EC was removed and centrifuged (2000 rpm, 5 min) to remove non-adherent cells. Samples were aliquoted and stored at -80°C. Secreted adiponectin, leptin and resistin were measured using mouse ELISA DuoSets for the respective adipokines (R&D Systems Europe, UK). Adipsin and apelin were analysed using pre-coated ELISA plates (Antibodies-Online GmbH). Secreted adipokine was expressed in relation to total protein content.

For measurements of protein content, the adherent cells in the wells were washed with PBS and then lysed using a PBS-solution containing protease inhibitor (1 tablet per 10 ml; Complete Mini, Roche, Germany) and SDS (2%). Cells were removed by scraping and the cell mixture was stored at -80°C. To ensure complete cell lysis the thawed cell mixture was ultra sonicated before protein measurements were performed using Pierce BCA protein kit (Thermo Scientific, USA) according to instructions. Samples were centrifuged and the lipid layer removed.

### Adiponectin release in human adipocytes

Human adipocytes (200  $\mu$ l packed cells  $ml^{-1}$ ) were washed and pre-incubated in EC for 30 min at 32°C. Subsequently, test substances were added as indicated and adipocytes were incubated with gentle shaking for 30 min at 32°C. The incubation was terminated by separation of the cells from the media by centrifugation through diisononyl phthalate (Sigma-Aldrich, USA) and instant freezing on dry ice. Tubes were cut through the diisononyl phthalate layer at two points to separate the cells from the media. Samples were stored at -80°C. Secreted adiponectin was measured as described above and compared to total protein content.

### Measurements of cAMP content

Cyclic AMP XP Assay Kit No. 4339 (Cell Signaling, Beverly, MA, USA) was used to determine intracellular levels of cAMP. Measurements were carried out according to manufacturer's instructions.

### Data analysis

In all infusion experiments the rate of capacitance increase ( $\Delta C/\Delta t$ ) was measured at two or more different time points applying linear fits as illustrated in Fig. 1B. The total capacitance increase at the end of the recording ( $\Delta C_{tot}$ ), reflecting the number of vesicles released, as well as the duration of the exocytotic response were also determined as illustrated in Fig. 1B. As specified in Results,  $\Delta C_{tot}$  corresponds to a plateau value (when applicable) or the magnitude of the capacitance increase observed 10 min after establishment of the whole-cell configuration. The statistical significance of variance between two means was calculated using Origin Pro (OriginLab Corporation, USA) and Student's *t*-test, paired or unpaired as appropriate. When more than one group is compared to the same control group one-way ANOVA was applied. All data are presented as mean values  $\pm$  SEM for the designated number of experiments. The free  $[Ca^{2+}]$  of the intracellular solutions was calculated using MAXC downloads (<http://www.stanford.edu/~cpatton/maxc.html>).

## Results

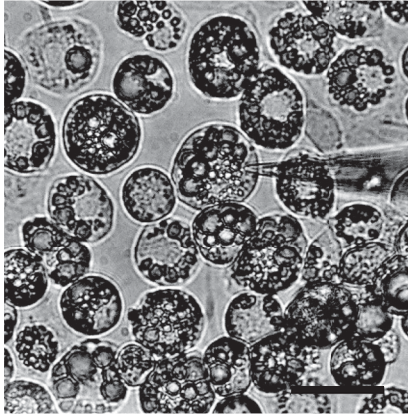
### Ca<sup>2+</sup> dependence of exocytosis in 3T3-L1 adipocytes

The role of Ca<sup>2+</sup> in white adipocyte exocytosis was investigated in 3T3-L1 adipocytes voltage clamped at -70 mV and infused with solutions containing different  $[Ca^{2+}]$  as well as 3 mM ATP and 0.1 mM cAMP. Infusion of cells with 9 mM CaCl<sub>2</sub> together with 10 mM of the Ca<sup>2+</sup> chelator EGTA, corresponding to a free  $[Ca^{2+}]$  of ~1.5  $\mu$ M, triggered exocytosis and the exocytotic rate ( $\Delta C/\Delta t$ ) measured during the second minute from the start of infusion averaged  $26 \pm 2.2$  fF s<sup>-1</sup> (Fig. 2A and C). This rate is similar to what has been measured in pancreatic  $\beta$ -cells using the same intracellular solution (Proks *et al.* 1996; Barg *et al.* 2002; Olofsson *et al.* 2009). Exocytosis continued for >10 min (measured in 8 recordings with a sustained seal).

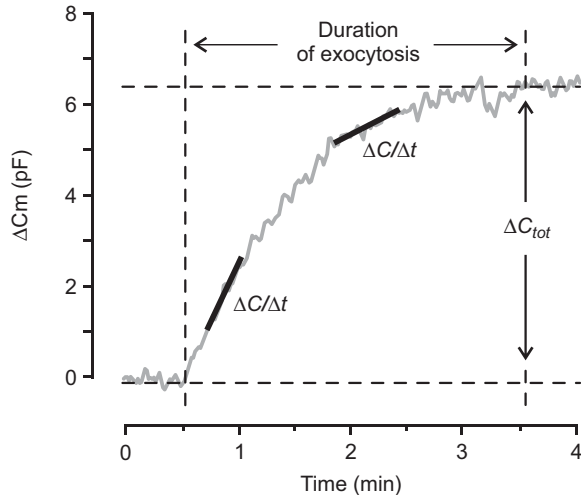
Exocytosis was still triggered using pipette solutions containing lower  $[Ca^{2+}]$  of either 8 or 6 mM CaCl<sub>2</sub> (10 mM EGTA), corresponding to free Ca<sup>2+</sup> concentrations of ~700 nM and ~250 nM, respectively (3 mM ATP and 0.1 mM cAMP still included). As can be seen in Fig. 2A and C, exocytosis at 700 nM free Ca<sup>2+</sup> proceeded at a rate corresponding to ~75% of that observed using 1.5  $\mu$ M Ca<sup>2+</sup> ( $P = 0.07$ ). Again, exocytosis continued for

>10 min (measured in 10 recordings). Infusion of cells with the solution containing 250 nM free  $\text{Ca}^{2+}$  stimulated exocytosis at a rate equal to ~50% of that achieved with the highest  $\text{Ca}^{2+}$  solutions. In eight cells infused with 250 nM free  $\text{Ca}^{2+}$  the capacitance increase plateaued within ~6 min, possibly signifying the depletion of a releasable vesicle pool (Burgoyne & Morgan, 2003).

A



B



### Figure 1. Example of differentiated 3T3-L1 adipocytes and analyses performance

A, 3T3-L1 adipocytes 9 days after start of differentiation. Note the accumulation of large lipid droplets. Patch pipette attached to a 3T3-L1 adipocyte representative of cells chosen for experiments. Scale bar = 50  $\mu\text{m}$ . B, example of a typical capacitance recording with  $\Delta C_m$  (delta membrane capacitance) plotted against time. Analyses were carried out as illustrated in the figure.  $\Delta C/\Delta t$  was measured at different time points as indicated by linear fits (black lines) superimposed on the capacitance trace (grey trace).  $\Delta C_{\text{tot}}$  was measured as the difference between the start and end values of membrane capacitance, either where a plateau was obtained or at  $t = 10$  min, as indicated.

We next investigated whether exocytosis could still be triggered in the absolute absence of intracellular  $\text{Ca}^{2+}$ . To ascertain complete  $\text{Ca}^{2+}$  buffering, the fast  $\text{Ca}^{2+}$  chelator BAPTA was used (0  $\text{CaCl}_2$  and 10 mM BAPTA; cAMP and ATP included). Exocytosis was still triggered by cAMP under  $\text{Ca}^{2+}$ -free conditions, at a rate similar to that seen at 250 nM free  $\text{Ca}^{2+}$  (Fig. 2B and C) and the capacitance increase again plateaued (at ~8 min). Values of total capacitance increase ( $\Delta C_{\text{tot}}$ ) and rates at exocytotic plateaus or at  $t = 10$  min using the different solutions are summarised in Fig. 2D.

Our results demonstrate that 3T3-L1 adipocyte exocytosis may proceed for long periods in the presence of  $\text{Ca}^{2+}$ , cAMP and ATP, possibly indicating that recruitment of vesicles for release is a  $\text{Ca}^{2+}$ -dependent process.

### The role of intracellular ATP in 3T3-L1 adipocyte exocytosis

To explore the involvement of ATP in adipocyte exocytosis, cells were infused with solutions containing or lacking the nucleotide, in the presence of 0 or 1.5  $\mu\text{M}$   $\text{Ca}^{2+}$  (Fig. 3A–D). At 1.5  $\mu\text{M}$   $\text{Ca}^{2+}$ , 3 mM ATP and 0.1 mM cAMP exocytosis was again triggered at a rate comparable to that seen in Fig. 2. Exclusion of ATP decreased the rate of capacitance increase ~60% ( $P < 0.01$  vs. ATP included). Interestingly, the capacitance continued to increase for  $\geq 10$  min and did not plateau even in experiments lasting up to 20 min, regardless of the absence or presence of ATP. Our results indicate that ATP is not required to sustain exocytosis/vesicle replenishment in 3T3-L1 adipocytes.

We next investigated how exclusion of intracellular ATP affected  $\text{Ca}^{2+}$ -independent exocytosis (using 10 mM BAPTA as a  $\text{Ca}^{2+}$  chelator; Fig. 3C–D). Under these conditions, exocytosis still occurred when the intracellular solution contained 3 mM ATP and 0.1 mM cAMP;  $\Delta C/\Delta t$  measured at 2 min averaged  $12 \pm 3$  fF  $\text{s}^{-1}$ , comparable to that in Fig. 2. Exclusion of ATP from the pipette solution did not affect exocytotic rate measured at any time point. The total capacitance increase measured at the plateau averaged  $4.4 \pm 1.1$  pF in the presence of ATP and  $3.8 \pm 0.7$  pF in the absence of the nucleotide (measured at ~9 and ~7 min respectively;  $P = 0.7$ ).

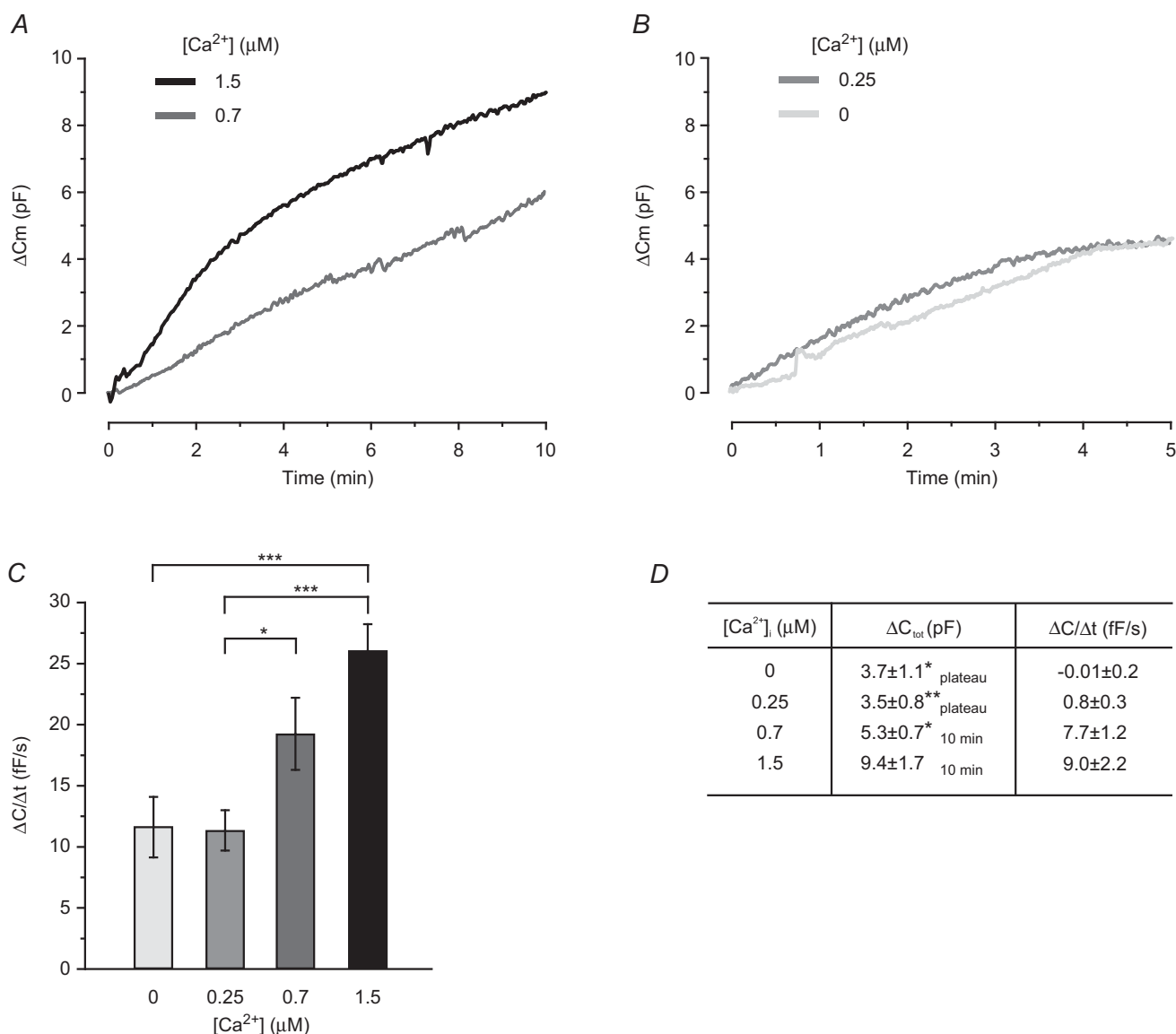
### The involvement of cAMP in 3T3-L1 adipocyte exocytosis

We next tested the effects of  $\text{Ca}^{2+}$  and ATP in the absence of cAMP. As shown in Fig. 4A–B, exocytosis was completely abolished upon exclusion of cAMP, regardless of the presence or absence of  $\text{Ca}^{2+}$  (1.5  $\mu\text{M}$ ). Likewise, no effects of ATP were detected in the absence of cAMP. These data underscore the central role of cAMP in adipocyte exocytosis.

Exocytosis regulated by cAMP may occur via pathways involving PKA or the cAMP receptor Epac (Seino & Shibasaki, 2005). To determine the involvement of PKA and Epac in 3T3-L1 adipocyte exocytosis, we again infused cells with the solution containing 0.1 mM cAMP (no  $\text{Ca}^{2+}$ , 3 mM ATP) supplemented or not with 0.5 mM of the PKA inhibitor Rp-cAMPS (Fig. 4C and D). In accordance with results in Fig. 3, cAMP stimulated exocytosis. Inclusion of the inhibitor was without effect

at any measured time point. It was verified that exocytosis was not induced by Rp-cAMPS alone ( $n = 4$ ;  $\Delta C/\Delta t = 1.2 \pm 0.6 \text{ fF s}^{-1}$ ).

To further investigate the contribution of PKA-independent signalling, we infused cells with a pipette solution lacking  $\text{Ca}^{2+}$  and cAMP supplemented with 8-Br-2'-O-Me-cAMP, a potent and specific activator of Epac (Herfindal *et al.* 2013). Agonist concentrations were chosen based on the binding affinity for Epac (5



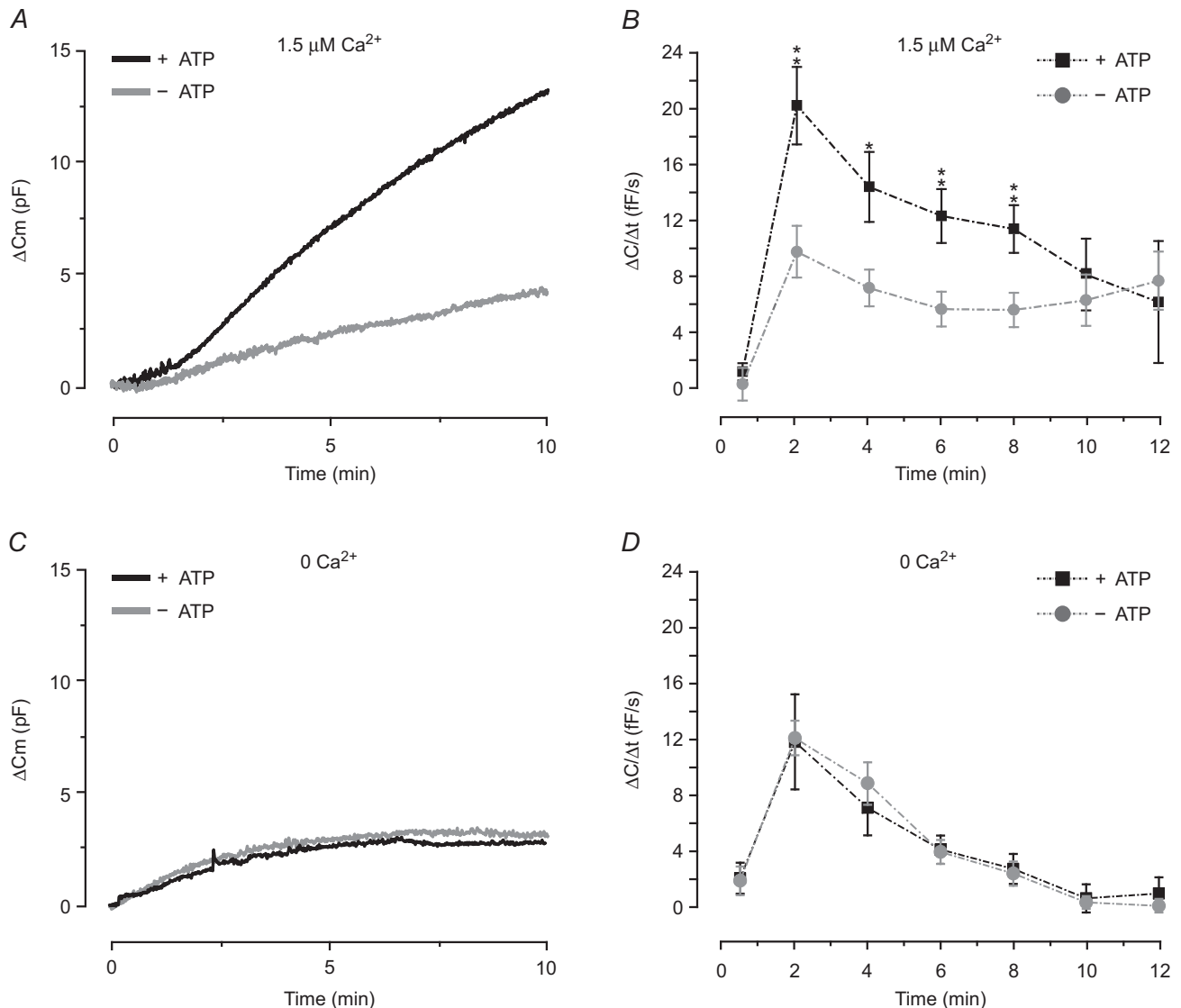
**Figure 2. The exocytotic response is affected by alterations in  $[\text{Ca}^{2+}]_i$**

A and B, typical recordings of  $\Delta C_m$  after establishment of the whole-cell configuration. Cells were infused with intracellular solutions containing 3 mM ATP and 0.1 mM cAMP, together with 1.5  $\mu\text{M}$  or 700 nM free  $\text{Ca}^{2+}$  (A) or 250 nM or 0 free  $\text{Ca}^{2+}$  (B). C, histogram summarising the average rate of capacitance increase ( $\Delta C/\Delta t$ ) measured at  $t = 2$  min using intracellular solutions with different  $[\text{Ca}^{2+}]_i$ . D, exocytotic plateau values or values at  $t = 10$  min (under conditions where plateaus were not reached), as indicated, using pipette solutions containing 0 ( $n = 8$ ), 250 nM ( $n = 7$ ), 700 nM ( $n = 10$ ) or 1.5  $\mu\text{M}$  ( $n = 8$ ) free  $\text{Ca}^{2+}$ . Average starting values of  $C_m$  were  $38 \pm 3$  pF (0  $\text{Ca}^{2+}$ ),  $35 \pm 4$  pF (250 nM  $\text{Ca}^{2+}$ ),  $45 \pm 5$  pF (700 nM  $\text{Ca}^{2+}$ ) and  $42 \pm 2$  pF (1.5  $\mu\text{M}$   $\text{Ca}^{2+}$ ). Data in A–C are mean values  $\pm$  SEM of 8–21 recordings. \* $P < 0.05$ ; \*\* $P < 0.01$ ; \*\*\* $P < 0.001$ .

times lower than the more commonly used but less specific 8pCPT-2Me-cAMP; information from Biolog). As shown in Fig. 4C and D, 1 mM 8-Br-2'-O-Me-cAMP stimulated exocytosis as potently as regular cAMP. Exocytosis was still triggered by 0.5 mM of the Epac agonist, at a rate amounting to 50% of that achieved using the higher concentration ( $n = 9$ ; not shown). Taken together these results suggest that cAMP-stimulation of 3T3-L1 adipocyte exocytosis occurs predominantly via PKA-independent pathways involving Epac.

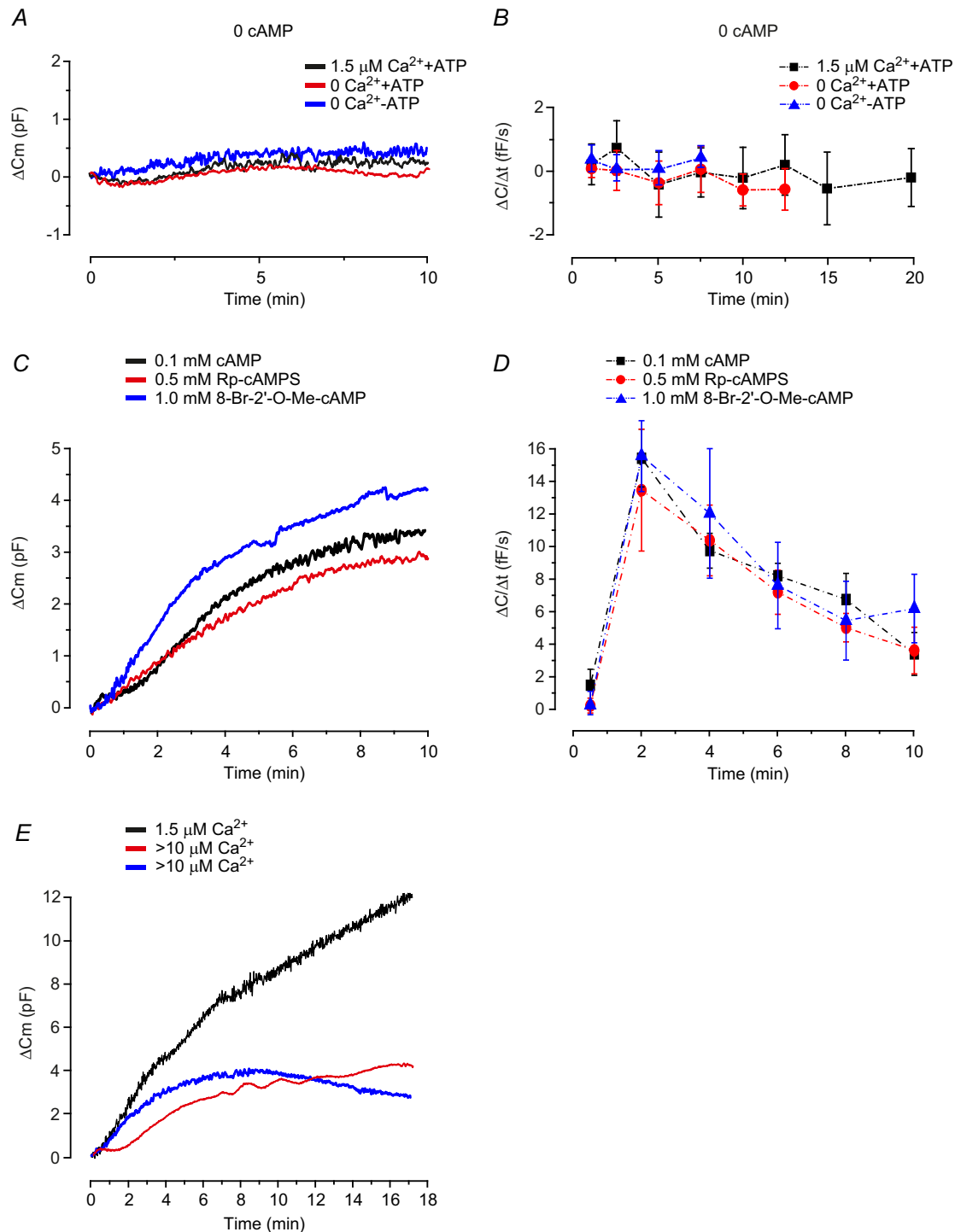
### Endocytosis vs. exocytosis

Recordings of cell membrane capacitance measure the balance between exo- and endocytosis. The fact that exocytosis is abolished using a pipette solution lacking cAMP while no apparent endocytosis is observed (see Fig. 4A and B) reinforces the proposal that measured alterations of membrane capacitance chiefly reflect exocytosis. Endocytosis has in several endocrine cell types been shown to be  $\text{Ca}^{2+}$  dependent (Eliasson *et al.* 1996;



**Figure 3. Exocytosis is augmented by  $\text{Ca}^{2+}$  and ATP**

A, representative traces of  $\Delta C_m$  for cells infused with intracellular solutions containing 0.1 mM cAMP and 1.5  $\mu\text{M}$  free  $\text{Ca}^{2+}$  with or without 3 mM ATP. B, average  $\Delta C/\Delta t$  at indicated time points. The observation that rates of exocytosis are equal at times  $\geq 10$  min indicates continuous vesicle replenishment regardless of absence or presence of ATP. Note that analysis at early time points (30 s) show little evidence of net exocytosis after establishment of the whole-cell configuration, before control of the intracellular milieu by infusion of the pipette solution. C and D, as in A and B but cells dialysed with a pipette solution lacking  $\text{Ca}^{2+}$ . The rates of exocytosis in B and D are close to 0 at 30 s, indicating negligible net exocytosis prior to infusion of the pipette solution. Data are mean values  $\pm$  SEM of: 8 (+ATP) and 7 (–ATP) recordings in B, and 9 (+ATP) and 13 (–ATP) recordings in D. \* $P < 0.05$ ; \*\* $P < 0.01$ .



**Figure 4.** 3T3-L1 adipocyte exocytosis is triggered by cAMP via PKA-independent mechanisms

**A**, typical recordings of  $\Delta C_m$  for cells dialysed with solutions lacking cAMP in the presence or absence of 1.5  $\mu\text{M}$  free  $\text{Ca}^{2+}$  and/or ATP (3 mM), as indicated. **B**, average exocytotic rates analysed at different time points for experimental series in **A**. **C**, representative traces of  $\Delta C_m$  for cells infused with intracellular solutions containing 0.1 mM cAMP together with 3 mM ATP, in the presence or absence of Rp-cAMPS (0.5 mM), or cells infused with a solution lacking cAMP and supplemented with 1 mM 8-Br-2'-O-Me-cAMP. **D**, the effect of Rp-cAMPS or 8-Br-2'-O-Me-cAMP on average  $\Delta C/\Delta t$  analysed at designated time points. Data are mean values  $\pm$  SEM of 9 (1.5  $\mu\text{M}$   $\text{Ca}^{2+}$ ), 12 (0  $\text{Ca}^{2+}$ ) and 13 (0  $\text{Ca}^{2+}$ , 0 ATP) recordings in **B**, and 8 (0.1 mM cAMP), 7 (0.1 mM cAMP + 0.5 mM Rp-cAMPS) and 9 (0 mM cAMP + 1 mM 8-Br-2'-O-Me-cAMP) recordings in **D**. **E**, two representative traces of endocytosis in cells infused with an intracellular solutions containing >10  $\mu\text{M}$  free  $\text{Ca}^{2+}$  together with 0.1 mM cAMP and 3 mM ATP. For comparison, a characteristic trace recorded in a cell infused with 1.5  $\mu\text{M}$  free  $\text{Ca}^{2+}$  is shown.



Mansvelder & Kits, 1998). It is therefore noteworthy that no endocytosis was detected in cells infused with a solution containing  $1.5 \mu\text{M}$  free  $\text{Ca}^{2+}$  (cAMP absent) even in recordings lasting up to 20 min (Fig. 4B).

To explore the role of  $\text{Ca}^{2+}$  in adipocyte endocytosis further, we infused cells with a solution containing an unphysiologically high free  $[\text{Ca}^{2+}]_i$  of  $>10 \mu\text{M}$ . A reduction of  $\Delta C/\Delta t$  by  $\sim 40\%$  at  $t = 2$  min ( $15 \pm 2.4 \text{ fF s}^{-1}$  cf.  $26 \pm 2.2 \text{ fF s}^{-1}$  at  $1.5 \mu\text{M}$  free  $\text{Ca}^{2+}$  in Fig. 2;  $P = 0.01$ ) and by  $\sim 70\%$  at  $t = 10$  min ( $2.9 \pm 0.6 \text{ fF s}^{-1}$  cf.  $9.0 \pm 2.2 \text{ fF s}^{-1}$  using  $1.5 \mu\text{M}$   $\text{Ca}^{2+}$ ) was evident, possibly resulting from exocytosis being masked by contaminant endocytosis occurring at a higher speed at high  $[\text{Ca}^{2+}]_i$ . Interestingly, endocytosis was in some experiments apparent as ‘bursts’ of membrane retrieval resulting in a partly wave-like capacitance trace; this was never seen in experiments using a solution containing a lower  $[\text{Ca}^{2+}]_i$ . In other experiments net endocytosis was evident as negative rates at later time points (examples of endocytosis depicted in Fig. 4E). Our results with  $>10 \mu\text{M}$  free  $\text{Ca}^{2+}$  are in agreement with a study in pancreatic  $\beta$ -cells where endocytosis was first detectable upon infusion of  $[\text{Ca}^{2+}]_i > 10 \mu\text{M}$  (Eliasson *et al.* 1996). Collectively, these findings make it justifiable to conclude that endocytosis interferes minimally with exocytosis triggered by the pipette solutions used in our study. It should be noted that endocytosis triggered by high  $[\text{Ca}^{2+}]_i$  would, if anything, result in an underestimation of the  $\text{Ca}^{2+}$  dependence of exocytosis in our cells.

### Exocytosis depends on cell size

Compared to most other cell types, white adipocytes are exceptionally large and the variation in cell size is immense. Adipocyte expansion is strongly associated with insulin resistance and type-2 diabetes (Jernas *et al.* 2006) and secretion of several adipokines has been suggested to depend on adipocyte cell size and to correlate with cell surface area (Skurk *et al.* 2007).

We plotted the initial cell capacitance ( $C_m$  value at the start of the recording before exocytosis was triggered) for all cells included in this study. The distribution of cell size (expressed as membrane capacitance) in a total of 155 experiments is shown in Fig. 5A. Observed cell capacitance ranged between 16 pF and 129 pF. The average cell size amounted to  $43 \pm 1$  pF and the median was 39 pF. The 8-fold variation in cell capacitance translates into a  $\sim 3$ -fold variation in cell diameter, which is significantly smaller than the 20-fold variation reported in human adipocytes (Jernas *et al.* 2006), probably in part reflecting a selection bias (avoiding the smallest and largest cells for electrophysiology). In order to investigate the importance of cell size in our study, we plotted  $\Delta C/\Delta t$  at  $t = 2$  min and  $\Delta C_{\text{tot}}$  values as a function of  $C_m$ . As can be seen in Fig. 5B–E, there were positive correlations between cell

size and  $\Delta C/\Delta t$  and  $\Delta C_{\text{tot}}$  both at 0 and  $1.5 \mu\text{M}$   $[\text{Ca}^{2+}]_i$  (cAMP and ATP included). Thus, exocytosis is in part a function of cell surface area. Reanalysis of  $\Delta C/\Delta t$  and  $\Delta C_{\text{tot}}$  values in Figs 2 and 3 in relation to initial cell size did not significantly affect the outcome of the experiments described.

It is interesting that adipocytes that are 10 times bigger than archetypal endocrine cells like pancreatic  $\beta$ -cells and melanotrophs, secrete at a similar rate ( $\sim 25 \text{ fF s}^{-1}$ ; Thomas *et al.* 1990; Proks *et al.* 1996; Barg *et al.* 2002; Olofsson *et al.* 2009). However, it is worth remembering that the cytosol of white adipocytes comprises only 5% of the total cell volume while the remaining 95% of the cell interior is filled with lipids (Trujillo & Scherer, 2006). Thus, the large size of the cells is more likely to be related to their lipid storage capacity than to their secretory functions.

### The role of $\text{Ca}^{2+}$ and cAMP in white adipocyte adiponectin secretion

Adiponectin is released from mature white adipocytes and several studies have shown that 3T3-L1 adipocytes also secrete this adipokine (Bogan & Lodish, 1999; Blumer *et al.* 2008). To explore a possible association between our capacitance data and adiponectin secretion, we investigated how experimental alterations of intracellular  $\text{Ca}^{2+}$  and cAMP levels affected release of this adipokine. To compare the secretion results with the capacitance measurements, experiments were carried out at  $32^\circ\text{C}$  and secretion was measured in 30 min incubations. We argued that this would be sufficiently long to allow secretion of measurable adiponectin levels, yet short enough to permit comparison with the capacitance recordings. It should be noted that previous secretion studies have used very long (several hours or days) incubation times.

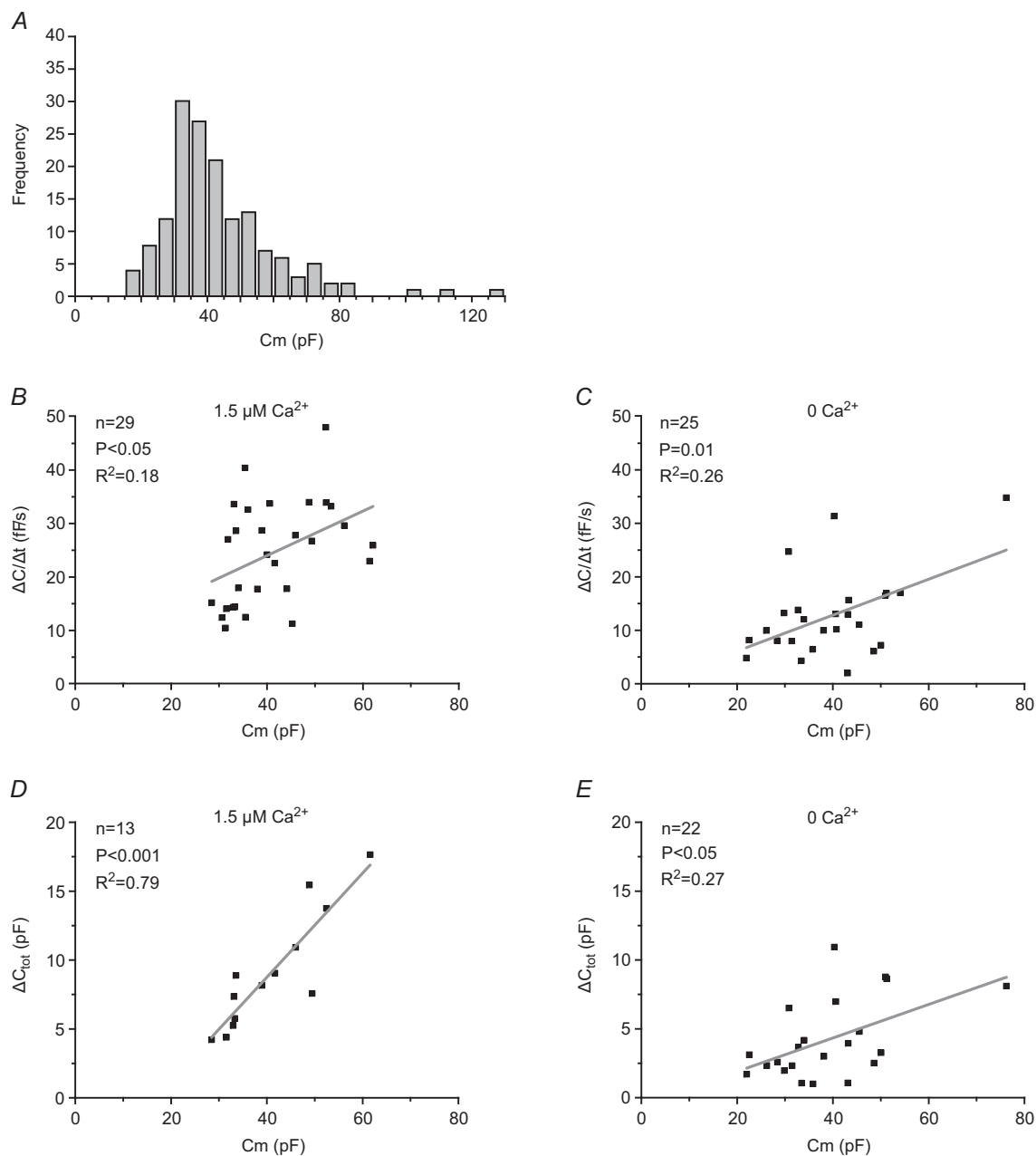
In order to investigate effects of elevated cAMP, 3T3-L1 adipocytes were incubated with  $10 \mu\text{M}$  forskolin and  $200 \mu\text{M}$  IBMX (forsk-IBMX). This combination elevated cytoplasmic cAMP levels  $>6$ -fold in our experiments and the elevation was unaffected by  $\text{Ca}^{2+}$  buffering (Fig. 6A). As shown in Fig. 7A, forsk-IBMX stimulated adiponectin secretion  $>3$ -fold compared to control. Forskolin has, in addition to elevating cAMP, been shown to increase  $[\text{Ca}^{2+}]_i$  in pancreatic islet cells (Gao *et al.* 2002) and brown adipocytes (Nakagaki *et al.* 2005). Ratiometric recordings of cytosolic  $[\text{Ca}^{2+}]_i$  showed that forsk-IBMX elevated 3T3-L1 adipocyte  $[\text{Ca}^{2+}]_i$ , from a basal value of  $92 \pm 3 \text{ nM}$  to an average peak value of  $140 \pm 4 \text{ nM}$  (Fig. 6B; 144 analysed cells in five separate experiments). Thus, to study the role of intracellular  $\text{Ca}^{2+}$  in forsk-IBMX-stimulated secretion, 3T3-L1 adipocytes were pre-incubated with membrane-permeable BAPTA-AM ( $50 \mu\text{M}$ ; 30 min). The  $\text{Ca}^{2+}$  buffering effect was verified in pre-treated

cells stimulated with extracellular ATP. In four separate experiments, pre-loading with BAPTA abolished the  $[Ca^{2+}]_i$ -elevating effect of  $100 \mu M$  ATP (not shown). Forsk-IBMX elevated secretion of adiponectin to the same extent in BAPTA-treated cells (Fig. 7A).

To further study the role of  $Ca^{2+}$  in cAMP-stimulated adiponectin secretion, 3T3-L1 adipocytes were exposed

to the  $Ca^{2+}$  ionophore ionomycin (Fig. 7B). Forsk-IBMX again stimulated adiponectin secretion  $>3$ -fold, an effect that was augmented 2-fold in the presence of  $1 \mu M$  ionomycin.

To verify the physiological importance of our findings, primary human subcutaneous adipocytes were incubated for 30 min together with forsk-IBMX. Forskolin was



**Figure 5. Relationship between cell size and exocytotic capacity of 3T3-L1 adipocytes**

A, the distribution of cell size (measured in pF) for 155 capacitance recordings included in our study. Cell sizes have been divided in 5-pF groups. B–E, values of  $\Delta C/\Delta t$  (B and C) and  $\Delta C_{tot}$  (D and E) as a function of  $C_m$  for cells dialysed with a pipette solution containing 3 mM ATP and 0.1 mM cAMP with 1.5  $\mu M$  (B and D) or 0 (C and E) free  $Ca^{2+}$ . Values for  $\Delta C_{tot}$  are represented by plateau values in the absence of  $Ca^{2+}$ . In the presence of 1.5  $\mu M$  free  $Ca^{2+}$ , when plateaus were not achieved,  $\Delta C_{tot}$  represents the change in cell capacitance during the first 10 min of the recording.

included at 0.5 or 10  $\mu\text{M}$ . As shown in Fig. 7C, both concentrations of forskolin (combined with 200  $\mu\text{M}$  IBMX) also stimulated adiponectin release in human adipocytes.

The presence of basal adiponectin secretion under control conditions is evident in both 3T3-L1 and human adipocytes. Every hormone released by regulated secretion also has a basal background release, controlled by for the most part unknown mechanisms. In our adiponectin secretion experiments basal release can be envisaged to arise partly from the intracellular presence of some cAMP

in unstimulated cells. Moreover, plasma adiponectin levels are continuously high and a notable basal secretion of this adipokine is thus expected.

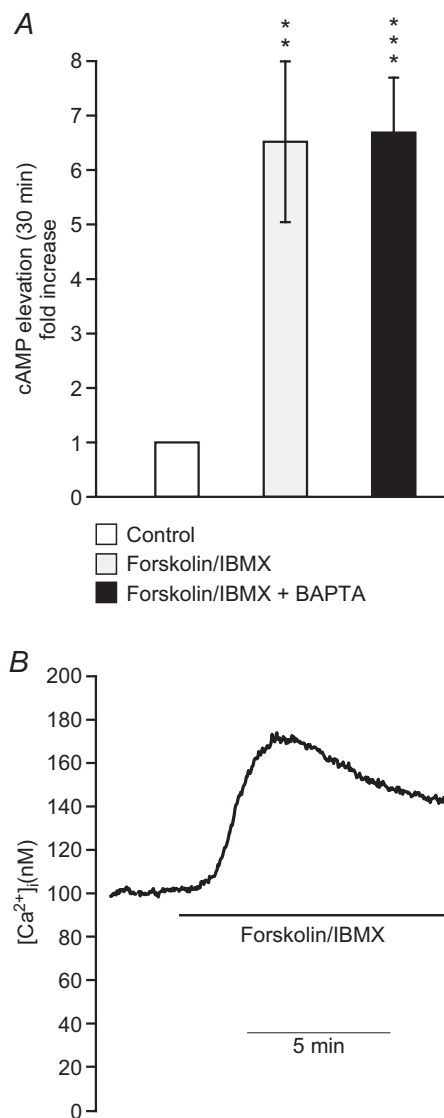
### The involvement of PKA-independent mechanisms in cAMP stimulation of adiponectin secretion

To elucidate the cAMP signalling pathway, we investigated the ability of forsk–IBMX to stimulate adiponectin secretion in cells treated with the membrane-permeable protein kinase A inhibitor Rp-8-Br-cAMPS (present during 30 min pre-incubation and throughout 30 min stimulations). Forsk–IBMX stimulated adiponectin secretion >4-fold in this series of experiments. As shown in Fig. 7D, the stimulation was unaffected by inclusion of 200  $\mu\text{M}$  Rp-8-Br-cAMPS. It was verified that Rp-8-Br-cAMPS alone was without effect on adiponectin release. The results using Rp-8-Br-cAMPS indicate that cAMP stimulates adiponectin secretion via a PKA-independent pathway. It is therefore of interest that the effect of forsk–IBMX was mimicked by the membrane-permeable Epac agonist 8-Br-2'-O-Me-cAMP-AM (20  $\mu\text{M}$ ; Fig. 7E). In fact, the Epac agonist was only a marginally weaker stimulus than forsk–IBMX and this difference did not attain statistical significance. A higher concentration of the agonist (60  $\mu\text{M}$ ) had similar effects (investigated concentrations chosen based on Chepurny *et al.* 2010 and discussions with Biolog).

The experiment was replicated using primary human subcutaneous adipocytes (Fig. 7F). When included at a concentration of 20  $\mu\text{M}$ , 8-Br-2'-O-Me-cAMP-AM stimulated adiponectin release  $\sim$ 2-fold above control, similar to the stimulation produced by 10  $\mu\text{M}$  forskolin in the presence of IBMX (cf. Fig. 7C).

### Secretion of additional adipokines

White adipocytes secrete several known adipokines in addition to adiponectin whose release may contribute to observed membrane capacitance increases. Leptin and resistin are, together with adiponectin, classified as adipocyte-derived peptide hormones and have been suggested to be released via regulated exocytosis (Bogan & Lodish, 1999; Bradley & Cheatham, 1999; Roh *et al.* 2000; Zhong *et al.* 2002; Xie *et al.* 2008; Ye *et al.* 2010). We thus investigated the secretion of those adipokines in 30 min incubations. Resistin is secreted from rodent and 3T3-L1 adipocytes (Zhong *et al.* 2002; Ye *et al.* 2010) although in humans this adipokine is mainly secreted from macrophages as well as from immature adipocytes (Janke *et al.* 2002; Lazar, 2007). Resistin was present in the medium from cells stimulated with forsk–IBMX but amounted to only 6%

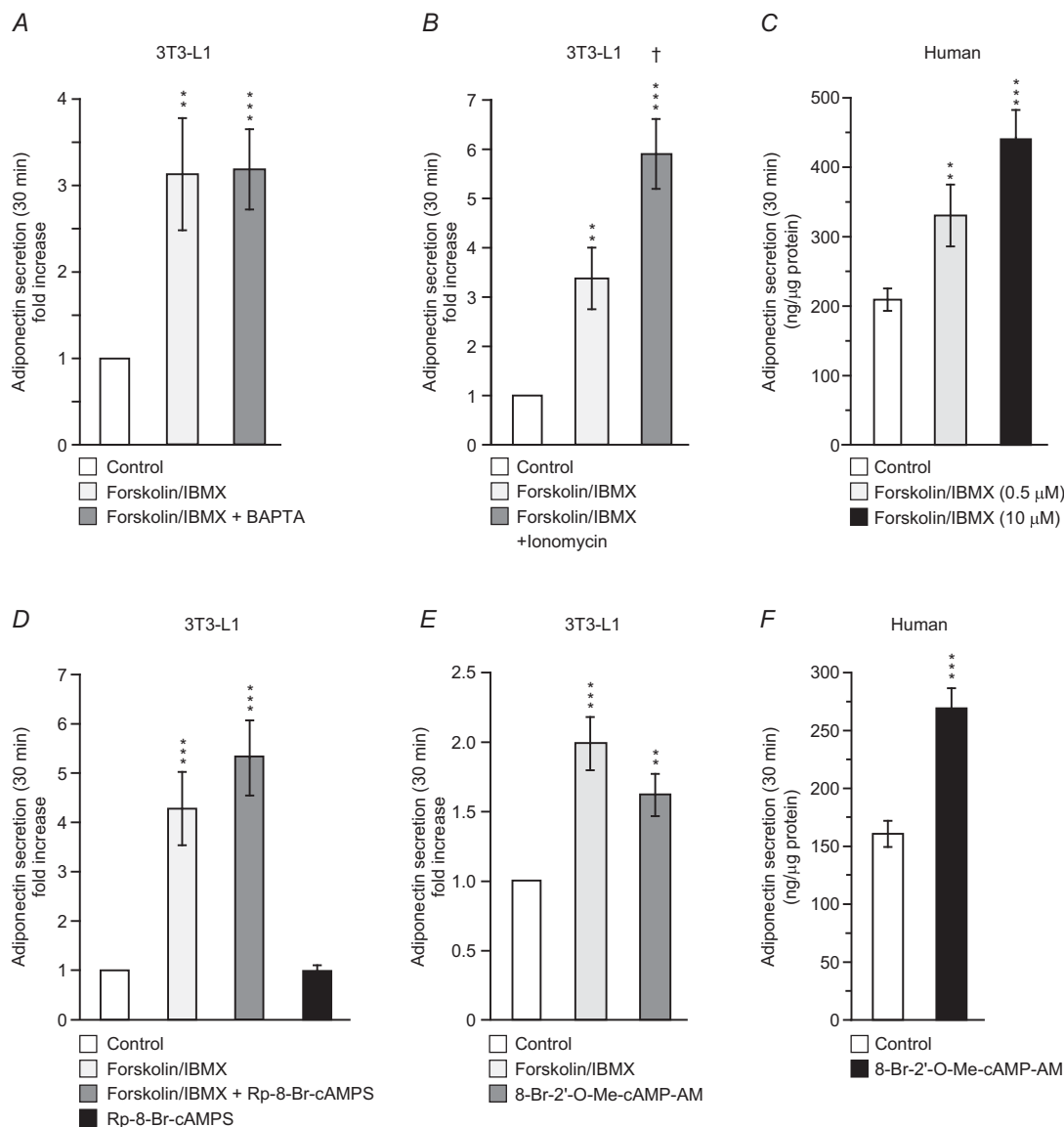


**Figure 6. A combination of forskolin and IBMX increases adipocyte cAMP levels and elevates  $[\text{Ca}^{2+}]_i$**

A, cytoplasmic [cAMP] in 3T3-L1 adipocytes incubated with forskolin (10  $\mu\text{M}$ ) + IBMX (200  $\mu\text{M}$ ) for 30 min in the presence or absence (pre-treatment with 50  $\mu\text{M}$  BAPTA-AM) of intracellular  $\text{Ca}^{2+}$ . B, example trace of effect of forsk–IBMX on 3T3-L1 adipocyte  $[\text{Ca}^{2+}]_i$ . \*\* $P < 0.01$ ; \*\*\* $P < 0.001$ .

of measured adiponectin ( $2.0 \pm 0.3 \text{ ng ml}^{-1}$  resistin vs.  $34 \pm 3 \text{ ng ml}^{-1}$  adiponectin; analysed in 22 samples). The ratio between adiponectin and resistin remained constant upon inclusion of ionomycin ( $3.0 \pm 0.5 \text{ ng ml}^{-1}$  resistin vs.  $50 \pm 5 \text{ ng ml}^{-1}$  adiponectin). The 3T3-L1 adipocytes

used in this study are known to express/secret very low levels of leptin (MacDougald *et al.* 1995; Norman *et al.* 2003); this was confirmed by measurements showing that this adipokine is secreted in small amounts in our cells (secreted leptin amounted to  $2.8 \pm 0.3 \text{ ng ml}^{-1}$



**Figure 7. cAMP stimulated adiponectin secretion is Epac dependent and potentiated by  $\text{Ca}^{2+}$**

A, adiponectin secretion in 3T3-L1 adipocytes expressed as fold-increase compared to basal (5 mM glucose alone) during 30 min incubations ( $32^\circ\text{C}$ ) with forskolin ( $10 \mu\text{M}$ ) + IBMX ( $200 \mu\text{M}$ ) with or without BAPTA pre-treatment ( $50 \mu\text{M}$ ). B, as in A, but cells incubated for 30 min with forsk-IBMX in the absence or presence of ionomycin ( $1 \mu\text{M}$ ). C, adiponectin secretion during 30 min incubation of human primary subcutaneous adipocytes with forskolin ( $0.5$  or  $10 \mu\text{M}$ ) together with IBMX ( $200 \mu\text{M}$ ). D, effects of the cAMP antagonist Rp-8-Br-cAMPS ( $200 \mu\text{M}$ ) on forsk-IBMX-stimulated adiponectin secretion in 3T3-L1 adipocytes. E, 3T3-L1 adipocyte adiponectin secretion stimulated during 30 min incubation with the Epac agonist 8-Br-2'-O-Me-cAMP-AM ( $20 \mu\text{M}$ ). F, adiponectin secretion in human subcutaneous adipocytes stimulated with 8-Br-2'-O-Me-cAMP-AM ( $20 \mu\text{M}$ ) for 30 min. Note that basal secretion (control) is somewhat lower than in C, but that the fold-increase produced by the agonist is of similar magnitude as that stimulated with forsk-IBMX. Data are mean values  $\pm$  SEM of 14 (A), 8 (B), 10 (D) and 11 (E) experiments. Isolated adipocytes from four and three patients were used in C and F, respectively. \*\* $P < 0.01$ ; \*\*\* $P < 0.001$ .

compared to  $114 \pm 0.1 \text{ ng ml}^{-1}$  adiponectin; analysed in 12 samples exposed to forsk-IBMX). We further investigated the content of apelin and adipsin in the same samples, two additional adipokines suggested to be abundantly released from 3T3-L1 adipocytes (Kitagawa *et al.* 1989; Than *et al.* 2012). Apelin secretion was very low ( $4.5 \pm 0.5 \text{ ng ml}^{-1}$ ) and thus amounted to 2% of secreted adiponectin. Adipsin was released in slightly larger amounts but the secretion was unaffected by stimulation with forsk-IBMX ( $13 \pm 0.2 \text{ ng ml}^{-1}$  in control cells compared to  $18 \pm 0.4 \text{ ng ml}^{-1}$  apelin in cells exposed to forsk-IBMX ( $P = 0.3$ ); compare with a 4-fold elevation of adiponectin release in this series from  $27 \pm 3 \text{ ng ml}^{-1}$  under control conditions to  $114 \pm 0.1 \text{ ng ml}^{-1}$  when incubated with forsk-IBMX).

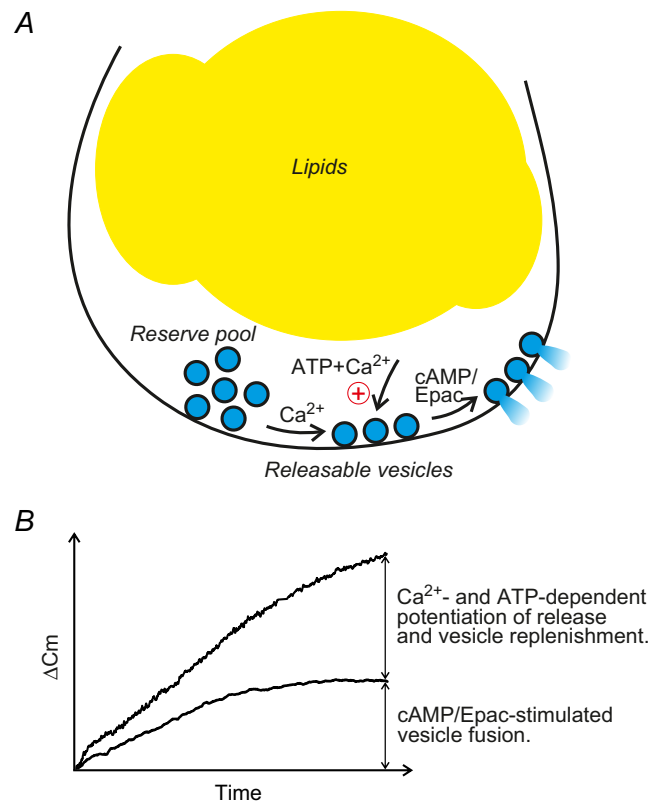
## Discussion

Here we combine electrophysiological recordings of membrane capacitance (exocytosis) with measurements of released adiponectin in white adipocytes with the aim of elucidating the mechanisms involved in short-term regulation of white adipocyte exocytosis. Neuroendocrine cells typically contain thousands of hormone or neurotransmitter-containing vesicles that need to undergo  $\text{Ca}^{2+}$ -, ATP-, and cAMP-dependent priming steps in order to attain release competence. Primed vesicles may be directly secreted upon stimulation, usually by  $\text{Ca}^{2+}$ , and once depleted the readily releasable vesicle pool must again be refilled by priming of new vesicles (Burgoyne & Morgan, 2003; Rorsman & Renstrom, 2003; Alvarez & Marengo, 2011). Our results show that although white adipocytes share some features of regulation of exocytosis with other endocrine cell types there are some fundamental differences. The key findings in our study, as well as certain aspects of particular interest, are discussed below.

### Regulation of white adipocyte exocytosis

We here show that 3T3-L1 adipocyte exocytosis is triggered by cAMP but that this effect is influenced by both  $\text{Ca}^{2+}$ -dependent and -independent processes. We propose that white adipocytes release adiponectin-containing vesicles according to the model summarised in Fig. 8A. Our model postulates that cAMP stimulates exocytosis of a readily releasable pool of adiponectin-containing vesicles in a  $\text{Ca}^{2+}$ - and ATP-independent manner. A combination of  $\text{Ca}^{2+}$  ( $\geq 700 \text{ nM}$ ) and ATP amplifies cAMP-triggered exocytosis via potentiation of vesicle release.  $\text{Ca}^{2+}$  is further necessary for vesicle replenishment. We base our model on the following findings. First, cAMP stimulates exocytosis (monitored as an increase in cell capacitance) at  $[\text{Ca}^{2+}] \leq 250 \text{ nM}$  whilst adiponectin secretion (detected biochemically) is stimulated by forsk-IBMX under intra-

cellular  $\text{Ca}^{2+}$ -free conditions (cf. Figs 2B and 7A). Second, the rate of capacitance increase evoked by cAMP in the absence of ATP is equal at early time points ( $t \leq 6 \text{ min}$ ) regardless of the absence or presence of intracellular  $\text{Ca}^{2+}$ . However, plateaus of capacitance increase are not seen when exocytosis is triggered in the presence of  $[\text{Ca}^{2+}] \geq 700 \text{ nM}$  (cf. Figs 2A and 3A), indicating a role for  $\text{Ca}^{2+}$  in recruitment of new vesicles for release. Third, the combination of  $[\text{Ca}^{2+}] \geq 700 \text{ nM}$  and ATP augments cAMP-triggered capacitance increase at early time points ( $t = 2\text{--}8 \text{ min}$ ; see Fig. 3B and schematic Fig. 8B) akin to a strong potentiation of adiponectin secretion in cells incubated with ionomycin (cf. Figs 2A and 7B). Further, the exocytotic rate in the presence of high  $\text{Ca}^{2+}$  measured at times  $\geq 10 \text{ min}$  equals that observed in the absence of ATP (Fig. 3B), indicating that ATP exerts its effect on exocytosis at a distal step equivalent to augmentation of



**Figure 8. Proposed model of regulation of white adipocyte exocytosis**

A, white adipocytes contain at least two functional pools of secretory vesicles whose release is differentially regulated by the intracellular messengers cAMP,  $\text{Ca}^{2+}$  and ATP. A pool corresponding to readily releasable adiponectin-containing vesicles is released by an elevation of cAMP alone.  $\text{Ca}^{2+}$  and ATP augment exocytosis and  $\text{Ca}^{2+}$ -dependent mechanisms are involved in replenishment of vesicles residing in a reserve pool (see text for details). B, schematic of increases in membrane capacitance in relation to secretion of vesicles with regard to the intracellular presence of cAMP,  $\text{Ca}^{2+}$  and ATP.

cAMP-stimulated vesicle release. Fourth, the potentiation of exocytosis by ATP is clearly  $\text{Ca}^{2+}$  dependent since ATP is without effect on exocytosis in the absence of  $\text{Ca}^{2+}$  (Fig. 3C and D). The finding that a selective Epac agonist stimulates exocytosis and adiponectin secretion to the same extent as cAMP further indicates that the cAMP stimulation occurs largely via PKA-independent signalling mediated by the cAMP-sensing protein Epac.

The ultrastructural characteristics of adipokine-containing vesicles remain poorly defined. However, based on the size of known peptide hormone vesicles (Parsons *et al.* 1995; Olofsson *et al.* 2002) and the abundant presence of large (200–500 nm), electron-dense vesicle structures in close proximity to the white adipocyte plasma membrane (Ramm *et al.* 2000), secretion of adipokines can be envisaged to significantly contribute to membrane capacitance and account for capacitance increases amounting to several picofarads (Fig. 8B).

We acknowledge that fusion of vesicles containing cargo other than adiponectin may contribute to the capacitance increases illustrated in Fig. 8B. Increases in adipocyte membrane capacitance have previously been ascribed to fusion of Glut4 vesicles with the plasma membrane (Chowdhury *et al.* 2002). However, the small diameter of those vesicles (50–70 nm; reviewed in Stockli *et al.* 2011), together with the reported maximal fusion rate ( $0.15 \text{ vesicles min}^{-1} \mu\text{m}^2$ ; Stenkula *et al.* 2010), suggest that Glut4 vesicle fusion only marginally (<5%) contributes to the observed increases in membrane capacitance. Our measurements indicate that the adipokines leptin, resistin and apelin are secreted at low levels compared to adiponectin (1–6%). Adipsin is released at significant levels but secretion of this adipokine was not further stimulated by forsk–IBMX, indicating that it is not released from the same vesicle population. Thus, even if we cannot exclude the possibility that release of additional adipokines contributes to the capacitance increases (if they are at all released by regulated exocytosis of a distinct vesicle population), quantitative considerations argue that the increases in cell capacitance we observe principally reflect adiponectin release. This conclusion is reinforced by the excellent correlation between measurements of cell capacitance and adiponectin secretion data.

### Roles of cAMP, $\text{Ca}^{2+}$ and ATP in control of exocytosis in white adipocytes and other endocrine cell types

Both the cAMP dependence as well as its  $\text{Ca}^{2+}$  independence distinguishes exocytosis in white adipocytes from that in archetypal endocrine cell types. Interplay between  $\text{Ca}^{2+}$  and cAMP is usually involved in non-neuronal cell type exocytosis but  $\text{Ca}^{2+}$  is typically the trigger of secretion while cAMP acts as an enhancer

(Szaszak *et al.* 2008). In pancreatic  $\beta$ -cells exocytosis can be triggered by  $\text{Ca}^{2+}$  alone, albeit at a rate lower than observed in the presence of cAMP (Renstrom *et al.* 1997; Eliasson *et al.* 2003). However, cAMP alone is unable to stimulate  $\beta$ -cell exocytosis in the absence of  $\text{Ca}^{2+}$  (Renstrom *et al.* 1997). By contrast, secretion in some exocrine cell types have been shown to be stimulated by cAMP while  $\text{Ca}^{2+}$  has augmenting effects (Szaszak *et al.* 2008).

The involvement of cAMP in white adipocyte adiponectin secretion has been investigated previously. With few exceptions, these studies investigate long-term (several hours or days) effects of alterations of cAMP and report that an elevation of the nucleotide significantly decreases adiponectin release (Delporte *et al.* 2002; Fasshauer *et al.* 2003; Cong *et al.* 2007; Fu *et al.* 2007). Short-term ( $\leq 3 \text{ h}$ ) effects of cAMP elevation were in addition investigated in a couple of the studies and either show no alteration (Delporte *et al.* 2002) or stimulation (Juan *et al.* 2007) of adiponectin secretion. Our own data demonstrate, in both 3T3-L1 cells and human subcutaneous adipocytes, that the acute response to cAMP is stimulation of adiponectin secretion. The finding that the stimulatory effect of cAMP is chiefly via a PKA-independent pathway further distinguishes adipocytes from other endocrine cell types. In pancreatic  $\beta$ -cells only approximately 15% of the cAMP effect on vesicle replenishment is due to PKA-independent signalling (Renstrom *et al.* 1997). It is interesting to hypothesise that the usage of a PKA-independent pathway for control of adiponectin release is a way to differentiate regulation of secretion and lipolysis, since the latter is known to be regulated mainly via PKA-dependent mechanisms (Carmen & Victor, 2006).

The role of  $\text{Ca}^{2+}$  in adiponectin secretion has previously not attracted much attention. It has been reported that acute exposure of 3T3-L1 adipocytes to the  $\text{Ca}^{2+}$  ionophore A23187 results in a negligible elevation of adiponectin secretion at early time points but that there is a significant stimulation at times longer than 90 min (Bogan & Lodish, 1999). This effect is in agreement with our observation that  $\text{Ca}^{2+}$  acts at early stages in the secretory pathway including replenishment of the release-competent pool of vesicles. The effects of  $\text{Ca}^{2+}$  described here occur within much shorter time frames, in the capacitance measurements during the first minutes of exocytosis (provided ATP is present). We attribute those differences to the concurrent elevation of cAMP in our study making more adiponectin-containing vesicles available for  $\text{Ca}^{2+}$ -dependent potentiation of release.

Our finding of an involvement of ATP in adipocyte exocytosis is in agreement with a study showing that a decrease of intracellular ATP levels inhibits rat adipocyte adiponectin release stimulated over 2 h (Szkudelski *et al.* 2011). As in other known secreting cell types, ATP may

be required for phosphorylation of exocytotic proteins (Burgoyne & Morgan, 2003).

### Pathophysiological significance and the way forward

In view of the important roles of cAMP and  $\text{Ca}^{2+}$  in control of short-term adiponectin secretion, it seems reasonable to postulate adrenergic signalling as a physiological stimulus for secretion of the adipokine. Adrenergic signalling is well known to be involved in regulation of adipocyte metabolic function and  $\alpha_{1,2}$  as well as  $\beta_{1-3}$  adrenergic receptors have been identified in white adipocytes (Lafontan *et al.* 1997). Catecholamine stimulation elevates intracellular levels of  $\text{Ca}^{2+}$  and cAMP via  $\alpha_1$  and  $\beta_{1-3}$  receptors, respectively. In contrast, activation of  $\alpha_2$  receptors leads to decreased production of both mediators. Thus, a dynamic functional balance between different adrenergic receptor subtypes in the adipocyte can be envisaged to influence adiponectin secretion. In agreement with the above suggestion, our own results show that incubation of primary mouse subcutaneous adipocytes during 30 min in the presence of adrenaline or the  $\beta_3$ -adrenergic agonist CL316243 elevates adiponectin release (A. M. Komai, S. Musovic & C. S. Olofsson, unpublished data). Importantly, adrenergic signalling is dysfunctional in several models of obesity and an increase in the  $\alpha_2$  to  $\beta$  receptor ratio has been described in adipocytes from obese individuals (Valet *et al.* 2000; van Baak, 2001). According to our model of secretion (Fig. 8A), such a switch would disrupt stimulus–secretion coupling with consequent diminished adiponectin release. Previous studies consistently report that long-term (several hours or days) adrenergic stimulation results in reduced adiponectin expression/secretion (Delporte *et al.* 2002; Fasshauer *et al.* 2003; Cong *et al.* 2007; Fu *et al.* 2007). It is conceivable that the long-term effects on release are in part due to adipocyte exhaustion (adiponectin vesicle depletion), analogous to the situation in pancreatic  $\beta$ -cells exposed to prolonged stimulation of insulin secretion (Robertson *et al.* 2003). Further, an increase in adipocyte intracellular cAMP has been shown to lead to ATP depletion (Gauthier *et al.* 2008) which would, consistent with our model of secretion, lessen adiponectin release.

The findings that elevated levels of adiponectin reduce the risk of developing type-2 diabetes (Spranger *et al.* 2003), together with its ability to promote adipocyte differentiation (Fu *et al.* 2005), suggest adiponectin as a promising pharmacological target. Production of recombinant adiponectin has proven to be problematic and the prospect of an effective strategy for therapeutic administration is uncertain. Thus, approaches are currently aimed at increasing levels of endogenous adiponectin. The accomplishment of this is undoubtedly reliant on understanding the

mechanisms controlling adiponectin secretion. Most neuroendocrine cells contain a single population of peptide hormone-containing vesicles (although they also contain smaller synaptic-like microvesicles; Kasai *et al.* 2012). In white adipocytes, several adipokines as well as Glut4 may be compartmentalised into distinct types of vesicles (Barr *et al.* 1997; Bogan & Lodish, 1999; Bradley & Cheatham, 1999; Roh *et al.* 2000; Xie *et al.* 2008; Ye *et al.* 2010). Insulin stimulates secretion of both leptin (Barr *et al.* 1997) and adiponectin (Blumer *et al.* 2008) as well as translocation of Glut 4-containing vesicles from an intracellular location to the plasma membrane (Liu *et al.* 2003; Huang *et al.* 2005). It is apparent that a complex control of exocytotic pathways exists in the adipocyte. Considering the well-established disturbances of adipokine secretion in obese individuals (Maury & Brichard, 2010), it is remarkable how little is known about the molecular and cellular regulation of adipokine secretion in the shorter term. Future cell physiological studies of the type we report here may help to resolve the underlying cellular mechanisms and ultimately pave the way for pharmacological correction of these defects.

### References

- Alvarez YD & Marengo FD (2011). The immediately releasable vesicle pool: highly coupled secretion in chromaffin and other neuroendocrine cells. *J Neurochem* **116**, 155–163.
- Astrom-Olsson K, Li L, Olofsson CS, Boren J, Ohlin H & Grip L (2012). Impact of hypoxia, simulated ischemia and reperfusion in HL-1 cells on the expression of FKBP12/FKBP12.6 and intracellular calcium dynamics. *Biochem Biophys Res Commun* **422**, 732–738.
- Barg S, Eliasson L, Renstrom E & Rorsman P (2002). A subset of 50 secretory granules in close contact with L-type  $\text{Ca}^{2+}$  channels accounts for first-phase insulin secretion in mouse beta-cells. *Diabetes* **51**(Suppl. 1), S74–82.
- Barr VA, Malide D, Zarnowski MJ, Taylor SI & Cushman SW (1997). Insulin stimulates both leptin secretion and production by rat white adipose tissue. *Endocrinology* **138**, 4463–4472.
- Blumer RM, van Roomen CP, Meijer AJ, Houben-Weerts JH, Sauerwein HP & Dubbelhuis PF (2008). Regulation of adiponectin secretion by insulin and amino acids in 3T3-L1 adipocytes. *Metabolism* **57**, 1655–1662.
- Bogan JS & Lodish HF (1999). Two compartments for insulin-stimulated exocytosis in 3T3-L1 adipocytes defined by endogenous ACRP30 and GLUT4. *J Cell Biol* **146**, 609–620.
- Bradley RL & Cheatham B (1999). Regulation of *ob* gene expression and leptin secretion by insulin and dexamethasone in rat adipocytes. *Diabetes* **48**, 272–278.
- Burgoyne RD & Morgan A (2003). Secretory granule exocytosis. *Physiol Rev* **83**, 581–632.

- Carmen GY & Victor SM (2006). Signalling mechanisms regulating lipolysis. *Cell Signal* **18**, 401–408.
- Chepurny OG, Kelley GG, Dzhura I, Leech CA, Roe MW, Dzhura E, Li X, Schwede F, Genieser HG & Holz GG (2010). PKA-dependent potentiation of glucose-stimulated insulin secretion by Epac activator 8-pCPT-2'-O-Me-cAMP-AM in human islets of Langerhans. *Am J Physiol Endocrinol Metab* **298**, E622–E633.
- Chowdhury HH, Kreft M & Zorec R (2002). Rapid insulin-induced exocytosis in white rat adipocytes. *Pflugers Arch* **445**, 352–356.
- Cong L, Chen K, Li J, Gao P, Li Q, Mi S, Wu X & Zhao AZ (2007). Regulation of adiponectin and leptin secretion and expression by insulin through a PI3K-PDE3B dependent mechanism in rat primary adipocytes. *Biochem J* **403**, 519–525.
- Delporte ML, Funahashi T, Takahashi M, Matsuzawa Y & Brichard SM (2002). Pre- and post-translational negative effect of  $\beta$ -adrenoceptor agonists on adiponectin secretion: *in vitro* and *in vivo* studies. *Biochem J* **367**, 677–685.
- Eliasson L, Ma X, Renstrom E, Barg S, Berggren PO, Galvanovskis J, Gromada J, Jing X, Lundquist I, Salehi A, Sewing S & Rorsman P (2003). SUR1 regulates PKA-independent cAMP-induced granule priming in mouse pancreatic B-cells. *J Gen Physiol* **121**, 181–197.
- Eliasson L, Proks P, Ammala C, Ashcroft FM, Bokvist K, Renstrom E, Rorsman P & Smith PA (1996). Endocytosis of secretory granules in mouse pancreatic  $\beta$ -cells evoked by transient elevation of cytosolic calcium. *J Physiol* **493**, 755–767.
- Fasshauer M, Kralisch S, Klier M, Lossner U, Bluher M, Klein J & Paschke R (2003). Adiponectin gene expression and secretion is inhibited by interleukin-6 in 3T3-L1 adipocytes. *Biochem Biophys Res Commun* **301**, 1045–1050.
- Fu L, Isobe K, Zeng Q, Suzukawa K, Takekoshi K & Kawakami Y (2007).  $\beta$ -adrenoceptor agonists downregulate adiponectin, but upregulate adiponectin receptor 2 and tumor necrosis factor- $\alpha$  expression in adipocytes. *Eur J Pharmacol* **569**, 155–162.
- Fu Y, Luo N, Klein RL & Garvey WT (2005). Adiponectin promotes adipocyte differentiation, insulin sensitivity, and lipid accumulation. *J Lipid Res* **46**, 1369–1379.
- Gao Z, Young RA, Trucco MM, Greene SR, Hewlett EL, Matschinsky FM & Wolf BA (2002). Protein kinase A translocation and insulin secretion in pancreatic  $\beta$ -cells: studies with adenylate cyclase toxin from *Bordetella pertussis*. *Biochem J* **368**, 397–404.
- Gauthier MS, Miyoshi H, Souza SC, Cacicedo JM, Saha AK, Greenberg AS & Ruderman NB (2008). AMP-activated protein kinase is activated as a consequence of lipolysis in the adipocyte: potential mechanism and physiological relevance. *J Biol Chem* **283**, 16514–16524.
- Grynkiwicz G, Poenie M & Tsien RY (1985). A new generation of Ca<sup>2+</sup> indicators with greatly improved fluorescence properties. *J Biol Chem* **260**, 3440–3450.
- Herfindal L, Nygaard G, Kopperud R, Krakstad C, Doskeland SO & Selheim F (2013). Off-target effect of the Epac agonist 8-pCPT-2'-O-Me-cAMP on P2Y12 receptors in blood platelets. *Biochem Biophys Res Commun* **437**, 603–608.
- Hevener AL & Febbraio MA (2009). The 2009 Stock Conference Report: Inflammation, obesity and metabolic disease. *Obes Rev* **11**, 635–644.
- Hoffstedt J, Arvidsson E, Sjolín E, Wahlen K & Arner P (2004). Adipose tissue adiponectin production and adiponectin serum concentration in human obesity and insulin resistance. *J Clin Endocrinol Metab* **89**, 1391–1396.
- Huang P, Altshuller YM, Hou JC, Pessin JE & Frohman MA (2005). Insulin-stimulated plasma membrane fusion of Glut4 glucose transporter-containing vesicles is regulated by phospholipase D1. *Mol Biol Cell* **16**, 2614–2623.
- Janke J, Engeli S, Gorzelniak K, Luft FC & Sharma AM (2002). Resistin gene expression in human adipocytes is not related to insulin resistance. *Obes Res* **10**, 1–5.
- Jernas M, Palming J, Sjöholm K, Jennische E, Svensson PA, Gabriellsson BG, Levin M, Sjogren A, Rudemo M, Lystig TC, Carlsson B, Carlsson LM & Lonn M (2006). Separation of human adipocytes by size: hypertrophic fat cells display distinct gene expression. *FASEB J* **20**, 1540–1542.
- Juan CC, Chuang TY, Chang CL, Huang SW & Ho LT (2007). Endothelin-1 regulates adiponectin gene expression and secretion in 3T3-L1 adipocytes via distinct signaling pathways. *Endocrinology* **148**, 1835–1842.
- Kasai H, Takahashi N & Tokumaru H (2012). Distinct initial SNARE configurations underlying the diversity of exocytosis. *Physiol Rev* **92**, 1915–1964.
- Kitagawa K, Rosen BS, Spiegelman BM, Lienhard GE & Tanner LI (1989). Insulin stimulates the acute release of adipin from 3T3-L1 adipocytes. *Biochim Biophys Acta* **1014**, 83–89.
- Kits KS & Mansvelder HD (2000). Regulation of exocytosis in neuroendocrine cells: spatial organization of channels and vesicles, stimulus–secretion coupling, calcium buffers and modulation. *Brain Research Brain Research Reviews* **33**, 78–94.
- Kohn AD, Summers SA, Birnbaum MJ & Roth RA (1996). Expression of a constitutively active Akt Ser/Thr kinase in 3T3-L1 adipocytes stimulates glucose uptake and glucose transporter 4 translocation. *J Biol Chem* **271**, 31372–31378.
- Kovacova Z, Tencerova M, Roussel B, Wedellova Z, Rossmeislova L, Langin D, Polak J & Stich V (2012). The impact of obesity on secretion of adiponectin multimeric isoforms differs in visceral and subcutaneous adipose tissue. *Int J Obes (Lond)* **36**, 1360–1365.
- Lafontan M, Barbe P, Galitzky J, Tavernier G, Langin D, Carpenne C, Bousquet-Melou A & Berlan M (1997). Adrenergic regulation of adipocyte metabolism. *Human Reproduction* **12** (Suppl. 1), 6–20.
- Lazar MA (2007). Resistin- and obesity-associated metabolic diseases. *Horm Metab Res* **39**, 710–716.
- Lindau M & Neher E (1988). Patch-clamp techniques for time-resolved capacitance measurements in single cells. *Pflugers Arch* **411**, 137–146.
- Liu LB, Omata W, Kojima I & Shibata H (2003). Insulin recruits GLUT4 from distinct compartments via distinct traffic pathways with differential microtubule dependence in rat adipocytes. *J Biol Chem* **278**, 30157–30169.
- MacDougald OA, Hwang CS, Fan H & Lane MD (1995). Regulated expression of the obese gene product (leptin) in white adipose tissue and 3T3-L1 adipocytes. *Proc Natl Acad Sci U S A* **92**, 9034–9037.



- Mansvelder HD & Kits KS (1998). The relation of exocytosis and rapid endocytosis to calcium entry evoked by short repetitive depolarizing pulses in rat melanotropic cells. *J Neurosci* **18**, 81–92.
- Maury E & Brichard SM (2010). Adipokine dysregulation, adipose tissue inflammation and metabolic syndrome. *Mol Cell Endocrinol* **314**, 1–16.
- Nakagaki I, Sasaki S, Yahata T, Takasaki H & Hori S (2005). Cytoplasmic and mitochondrial Ca levels in brown adipocytes. *Acta Physiol Scand* **183**, 89–97.
- Norman D, Isidori AM, Frajese V, Caprio M, Chew SL, Grossman AB, Clark AJ, Michael Besser G & Fabbri A (2003). ACTH and  $\alpha$ -MSH inhibit leptin expression and secretion in 3T3-L1 adipocytes: model for a central–peripheral melanocortin–leptin pathway. *Mol Cell Endocrinol* **200**, 99–109.
- Olofsson CS, Gopel SO, Barg S, Galvanovskis J, Ma X, Salehi A, Rorsman P & Eliasson L (2002). Fast insulin secretion reflects exocytosis of docked granules in mouse pancreatic B-cells. *Pflugers Arch* **444**, 43–51.
- Olofsson CS, Hakansson J, Salehi A, Bengtsson M, Galvanovskis J, Partridge C, SorhedeWinzell M, Xian X, Eliasson L, Lundquist I, Semb H & Rorsman P (2009). Impaired insulin exocytosis in neural cell adhesion molecule<sup>-/-</sup> mice due to defective reorganization of the submembrane F-actin network. *Endocrinology* **150**, 3067–3075.
- Parsons TD, Coorsen JR, Horstmann H & Almers W (1995). Docked granules, the exocytic burst, and the need for ATP hydrolysis in endocrine cells. *Neuron* **15**, 1085–1096.
- Proks P, Eliasson L, Ammala C, Rorsman P & Ashcroft FM (1996). Ca<sup>2+</sup>- and GTP-dependent exocytosis in mouse pancreatic  $\beta$ -cells involves both common and distinct steps. *J Physiol* **496**, 255–264.
- Ramm G, Slot JW, James DE & Stoorvogel W (2000). Insulin recruits GLUT4 from specialized VAMP2-carrying vesicles as well as from the dynamic endosomal/trans-Golgi network in rat adipocytes. *Mol Biol Cell* **11**, 4079–4091.
- Renstrom E, Eliasson L & Rorsman P (1997). Protein kinase A-dependent and -independent stimulation of exocytosis by cAMP in mouse pancreatic B-cells. *J Physiol* **502**, 105–118.
- Robertson RP, Harmon J, Tran PO, Tanaka Y & Takahashi H (2003). Glucose toxicity in  $\beta$ -cells: type 2 diabetes, good radicals gone bad, and the glutathione connection. *Diabetes* **52**, 581–587.
- Roh C, Thoidis G, Farmer SR & Kandror KV (2000). Identification and characterization of leptin-containing intracellular compartment in rat adipose cells. *Am J Physiol Endocrinol Metab* **279**, E893–E899.
- Rorsman P & Renstrom E (2003). Insulin granule dynamics in pancreatic  $\beta$ -cells. *Diabetologia* **46**, 1029–1045.
- Seino S & Shibasaki T (2005). PKA-dependent and PKA-independent pathways for cAMP-regulated exocytosis. *Physiol Rev* **85**, 1303–1342.
- Skurk T, Alberti-Huber C, Herder C & Hauner H (2007). Relationship between adipocyte size and adipokine expression and secretion. *J Clin Endocrinol Metab* **92**, 1023–1033.
- Spranger J, Kroke A, Mohlig M, Bergmann MM, Ristow M, Boeing H & Pfeiffer AF (2003). Adiponectin and protection against type 2 diabetes mellitus. *Lancet* **361**, 226–228.
- Stenkula KG, Lizunov VA, Cushman SW & Zimmerberg J (2010). Insulin controls the spatial distribution of GLUT4 on the cell surface through regulation of its postfusion dispersal. *Cell Metab* **12**, 250–259.
- Stockli J, Fazakerley DJ & James DE (2011). GLUT4 exocytosis. *J Cell Sci* **124**, 4147–4159.
- Stralfors P & Honnor RC (1989). Insulin-induced dephosphorylation of hormone-sensitive lipase. Correlation with lipolysis and cAMP-dependent protein kinase activity. *Eur J Biochem* **182**, 379–385.
- Szaszak M, Christian F, Rosenthal W & Klussmann E (2008). Compartmentalized cAMP signalling in regulated exocytic processes in non-neuronal cells. *Cell Signal* **20**, 590–601.
- Szkudelski T (2007). Intracellular mediators in regulation of leptin secretion from adipocytes. *Physiol Res* **56**, 503–512.
- Szkudelski T, Nogowski L & Szkudelska K (2011). Short-term regulation of adiponectin secretion in rat adipocytes. *Physiol Res* **60**, 521–530.
- Than A, Tee WT & Chen P (2012). Apelin secretion and expression of apelin receptors in 3T3-L1 adipocytes are differentially regulated by angiotensin type 1 and type 2 receptors. *Mol Cell Endocrinol* **351**, 296–305.
- Thomas P, Surprenant A & Almers W (1990). Cytosolic Ca<sup>2+</sup>, exocytosis, and endocytosis in single melanotrophs of the rat pituitary. *Neuron* **5**, 723–733.
- Trujillo ME & Scherer PE (2006). Adipose tissue-derived factors: impact on health and disease. *Endocr Rev* **27**, 762–778.
- Valet P, Grujic D, Wade J, Ito M, Zingaretti MC, Soloveva V, Ross SR, Graves RA, Cinti S, Lafontan M & Lowell BB (2000). Expression of human  $\alpha$ 2-adrenergic receptors in adipose tissue of  $\beta$ 3-adrenergic receptor-deficient mice promotes diet-induced obesity. *J Biol Chem* **275**, 34797–34802.
- van Baak MA (2001). The peripheral sympathetic nervous system in human obesity. *Obes Rev* **2**, 3–14.
- Xie L, O'Reilly CP, Chapes SK & Mora S (2008). Adiponectin and leptin are secreted through distinct trafficking pathways in adipocytes. *Biochim Biophys Acta* **1782**, 99–108.
- Ye F, Than A, Zhao Y, Goh KH & Chen P (2010). Vesicular storage, vesicle trafficking, and secretion of leptin and resistin: the similarities, differences, and interplays. *J Endocrinol* **206**, 27–36.
- Zhong Q, Lin CY, Clarke KJ, Kempainen RJ, Schwartz DD & Judd RL (2002). Endothelin-1 inhibits resistin secretion in 3T3-L1 adipocytes. *Biochem Biophys Res Commun* **296**, 383–387.

## Additional information

### Competing interests

None of the authors has any conflicts of interests.

### Author contributions

Conception and design of the experiments: A.M.K. and C.S.O. Data collection, analysis and interpretation of data: A.M.K., C.B., S. M. and C.S.O. Drafting and revising of the manuscript: A.M.K., C.B., S. M. and C.S.O. All authors have read and approved of the final version of the manuscript. All experiments were carried out at the Department of Physiology/ Metabolic Physiology, University of Gothenburg, with the exception of isolation and incubation of human adipocytes, which were performed at AstraZeneca R&D, Mölndal.

### Funding

This study was supported by Ollie and Elof Elofssons Stiftelse, the Åke Wiberg Foundation, the Magnus Bergvall

Foundation, Diabetesfonden (DIA- 2011-073, DIA2012-050 and DIA2013-070), the Novo Nordisk Foundation and the Swedish Medical Research Council (Grant IDs: 521-2012-2994 and 522-2010-2656). C.O. holds a Swedish Research Council Junior Researcher position.

### Acknowledgements

We thank Seid Talavani and Kosrat Latif for assistance with adiponectin release measurements and cell culturing and Dr Mickaël El Hachmane for help with analysis of  $[Ca^{2+}]_i$ . We thank Birgitta Odén and Dr Anna Forslöv (Discovery Sciences, AstraZenecaR&D, Mölndal) for assistance with isolation of human material. We thank Professor Patrik Rorsman for valuable discussions and reviewing of the manuscript.