

RESEARCH ARTICLE

Open Access

# Genetic landscape of populations along the Silk Road: admixture and migration patterns

Massimo Mezzavilla<sup>1,2</sup>, Diego Vozzi<sup>1</sup>, Nicola Pirastu<sup>2</sup>, Giorgia Girotto<sup>2</sup>, Pio d'Adamo<sup>2</sup>, Paolo Gasparini<sup>1,2</sup> and Vincenza Colonna<sup>3\*</sup>

## Abstract

**Background:** The ancient Silk Road has been a trading route between Europe and Central Asia from the 2<sup>nd</sup> century BCE to the 15<sup>th</sup> century CE. While most populations on this route have been characterized, the genetic background of others remains poorly understood, and little is known about past migration patterns. The scientific expedition "Marco Polo" has recently collected genetic and phenotypic data in six regions (Georgia, Armenia, Azerbaijan, Uzbekistan, Kazakhstan, Tajikistan) along the Silk Road to study the genetics of a number of phenotypes.

**Results:** We characterized the genetic structure of these populations within a worldwide context. We observed a West-East subdivision albeit the existence of a genetic component shared within Central Asia and nearby populations from Europe and Near East. We observed a contribution of up to 50% from Europe and Asia to most of the populations that have been analyzed. The contribution from Asia dates back to ~25 generations and is limited to the Eastern Silk Road. Time and direction of this contribution are consistent with the Mongolian expansion era.

**Conclusions:** We clarified the genetic structure of six populations from Central Asia and suggested a complex pattern of gene flow among them. We provided a map of migration events in time and space and we quantified exchanges among populations. Altogether these novel findings will support the future studies aimed at understanding the genetics of the phenotypes that have been collected during the Marco Polo campaign, they will provide insights into the history of these populations, and they will be useful to reconstruct the developments and events that have shaped modern Eurasians genomes.

**Keywords:** Silk Road, Admixture, Migration patterns, Central Asia, Effective population size, Georgia, Armenia, Azerbaijan, Uzbekistan, Kazakhstan, Tajikistan

## Background

The ancient Silk Road has been a trading route for several centuries in the past (2<sup>nd</sup> century BCE - 15<sup>th</sup> century CE) serving as a main connection between Europe and Asia. The route traverses a geographical region that was central during the human expansion from Africa [1,2], however its role during the stages of human evolution and its recent genetic history have not been fully clarified. At any rate, the complicated demographic history of the Silk Road populations must have left a trace on the patterns of genetic variation in a very unique way. Previous studies based on uniparental markers revealed extensive admixture between Europeans and eastern

Asians in central Asia, increased genetic diversity and correlation with linguistic patterns [3-5]. Similar results were observed in a study based on genomic data from twenty-seven microsatellites genotyped in 767 individuals from Uzbekistan Kyrgyzstan and Tajikistan [6]. This study reported a pattern of diffused admixture and migration among populations in the area, resulting in great genetic diversity correlated with patterns of linguistic diversity, as it is often the case [7]. Recently a more comprehensive study disentangled the different levels of gene flow in worldwide populations but did not include a number of populations from Central Asia, for which migration patterns are still not fully understood [8].

With the aim of studying the genetics of several phenotypes (e.g. food preferences, hearing and taste [9-12]),

\* Correspondence: vincenza.colonna@igb.cnr.it

<sup>3</sup>Institute of Genetics and Biophysics 'A. Buzzati-Traverso', National Research Council (CNR), via Pietro Castellino 111, 80131 Naples, Italy  
Full list of author information is available at the end of the article

the Marco Polo scientific campaign, collected in 2010 genetic and phenotypic information of 411 individuals from six countries dwelling along the Silk Road (Georgia, Armenia, Azerbaijan, Uzbekistan, Kazakhstan and Tajikistan). Some of them have not been extensively described in population genetics literature, and the work we present here aims to investigate for the first time the population structures and the admixture patterns by using hundreds of thousands of genome-wide markers and 53 other worldwide populations as a reference for comparison. We confirmed results of previously mentioned studies, and extended the analysis to quantify admixture proportions and migration contributions. Here, we are providing insightful information about the different levels of gene flow in these populations, highlighting the differences in population history and genetic structure.

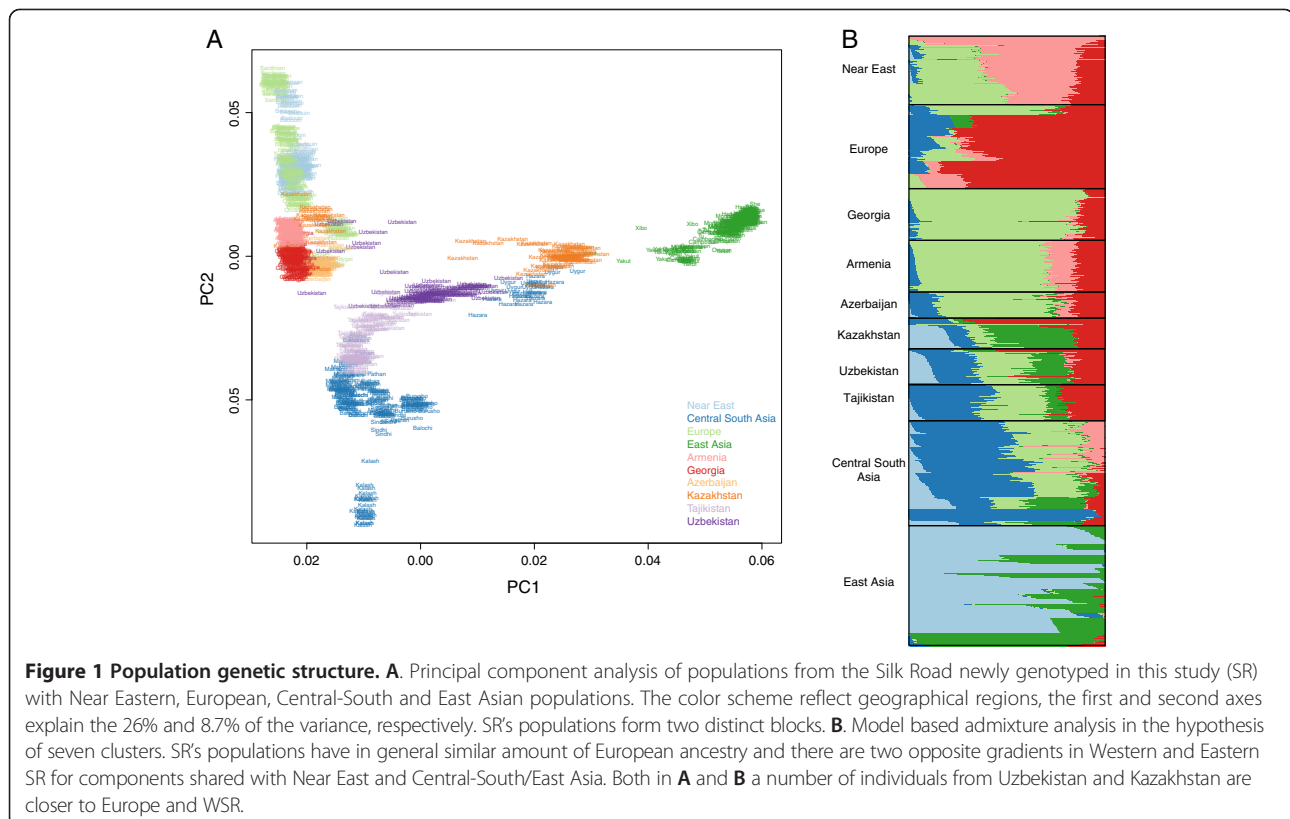
## Results and discussion

### Great genetic diversity and east-west blocks in the Silk Road populations

We compared genetic data at 299,899 single nucleotide variants for 441 individuals from six populations along the Silk Road (abbreviated in SR from now on) with 943 individuals from 53 populations worldwide from the Human Genome Diversity Project (HGDP) panel [13]. To make the discussion of the results easier we grouped HGDP populations by their geographical area, and we will refer to the

populations from Central Asia newly genotyped in this study as Silk Road, even if they are not exhaustively representative of the Silk Road (Additional file 1: Table S1).

First, we explored global patterns of genetic variation in our study populations. In the principal component analysis (PCA) of all 53 populations (Additional file 2: Figure S1), both first and second components distribute SR populations along the Asia-Europe gradient, and close to the nearby populations from Central Asia. SR populations, especially Uzbekistan and Kazakhstan, span over a region of the plot only slightly smaller in size than the one separating Europe from East Asia, suggesting great genetic diversity in these populations. ADMIXTURE analysis [14] on the same set of populations (Additional file 2: Figure S2), revealed, under the most likely hypothesis of ten clusters, very little or no contribution from Africa, Oceania and America and thus, we repeated analyses after removing these populations. The resulting PCA plots (Figure 1A and Additional file 2: Figure S3) show two different patterns for the Western and the Eastern SR. The Western SR (WSR) including Armenia, Georgia, and Azerbaijan shows, proximity with Europe and the Near East, while the Eastern Silk Road (ESR) including Uzbekistan and Tajikistan and Kazakhstan shows a proximity generally closer to Asia, except for a number of individuals from Uzbekistan and Kazakhstan who are closer to Europe and the WSR. This pattern does

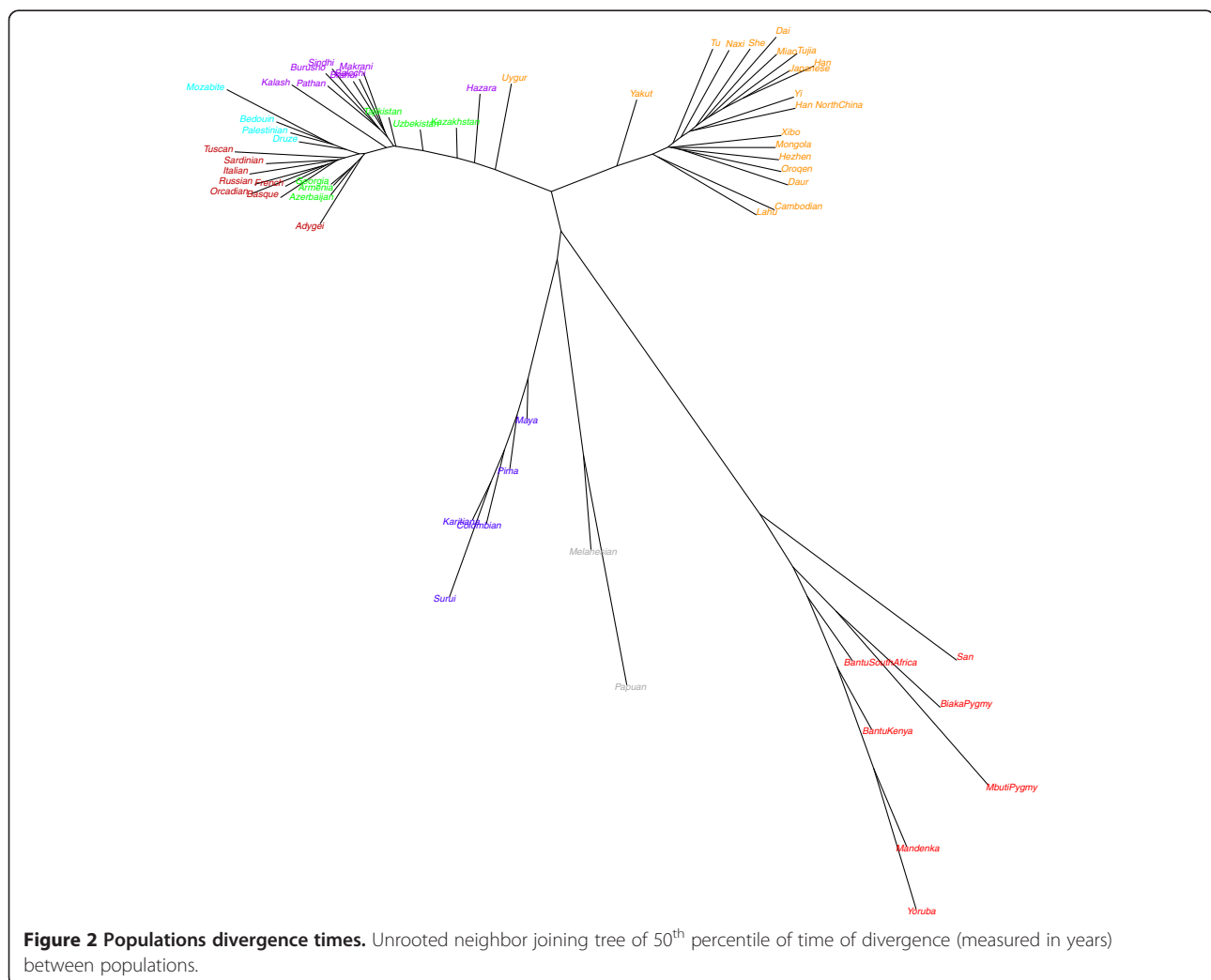


not reflect the sampling strategy (rural communities *versus* cities, see Methods) but rather true genetic diversity; indeed samples closer to Europeans are from the same sampling locations of samples in the other block. Admixture analysis on the same reduced set of populations, revealed more details. The most likely hypothesis of seven clusters (Figure 1B, see results for different number of clusters in Additional file 2: Figure S4) shows that, overall, populations of the SR have a similar amount of European ancestry (red in Figure 1B) suggesting a common genetic legacy between Europe and the SR. An exception is found for some individuals in Uzbekistan and Kazakhstan where this component is >50%; these individuals cluster with Europe in the PCA. There are instead two opposite gradients in the WSR and the ESR for components shared with Near East and Central-South/East Asia. In the WSR we observe predominance of the Near Eastern component (pink and light green in Figure 1B), whereas in the ESR there is a predominance of Asian components (shades of blue in Figure 1B). Notably the dark blue component,

which is diffused within the ESR, is predominant in the Kalash isolate [15] (Additional file 2: Figure S4), suggesting a common ancestral origin. The overall picture suggests that, beside a shared genetic pattern, there are two blocks of populations, and the ESR populations tend to be more admixed than the WSR ones.

The hypothesis of the two blocks, is further corroborated by the positions that the SR populations occupy in the tree of the populations' divergence times estimates, as described in [16] (Figure 2) with the WSR close to Europeans, and the ESR between Central-South Asia and East Asia, with a large split time difference.

Next we explored the history of isolation and consanguinity in our set of populations. When calculating inbreeding coefficient, we did not observe particularly high values for the SR populations (Additional file 2: Figure S5). We evaluated the prevalence of stretches of homozygous regions (ROH) by comparing the cumulative distribution of the total length of ROH per individual in each population or group of populations, assuming a



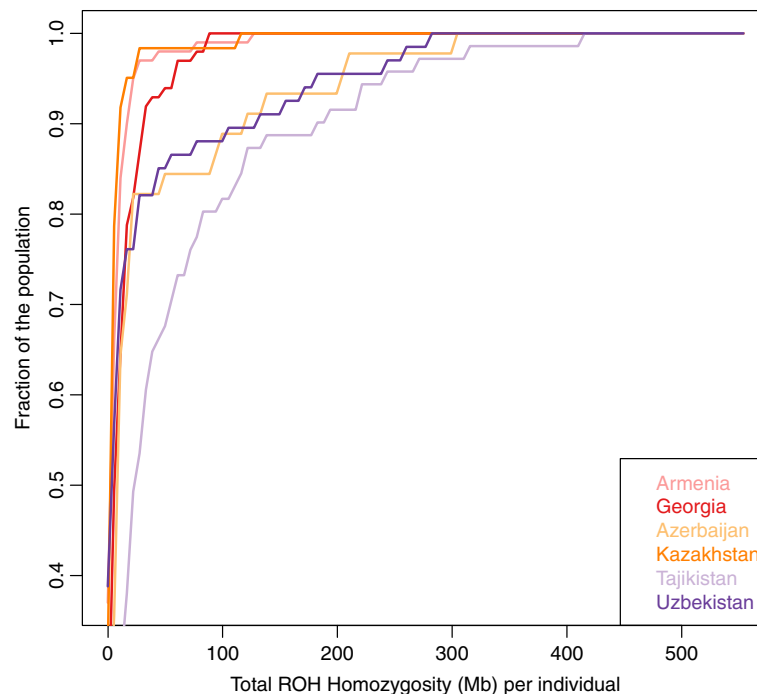
minimum ROH length of 2 Mb. Among the Silk Road populations, Tajiks have the longest stretches of homozygosity (Figure 3), higher than Europeans and East Asians (Additional file 2: Figure S6) and only lower than other founder populations, e.g. Surui in America, Papuan in Oceania and Kalash in Central-South Asia. In 80% of the Tajiks, the stretches of homozygosity sum up to 100 Mb whereas for other populations this value is below 30%. Because the length and the extension of ROH reflect the effective population size ( $N_e$ ) [17,18], we confirmed our findings by evaluating  $N_e$  as described in [19-21] Tajikistan has one of the lowest  $N_e$  among SR populations, with a declining trend in the last 10,000 years (Additional file 2: Figure S7). However, for all SR populations, long-term estimates  $N_e$  is comparable to other reference populations (Additional file 2: Figure S8), suggesting high level of genetic variation in that area.

#### Migrations patterns revealed unidirectional gene flow from East Asia to Eastern Silk Road

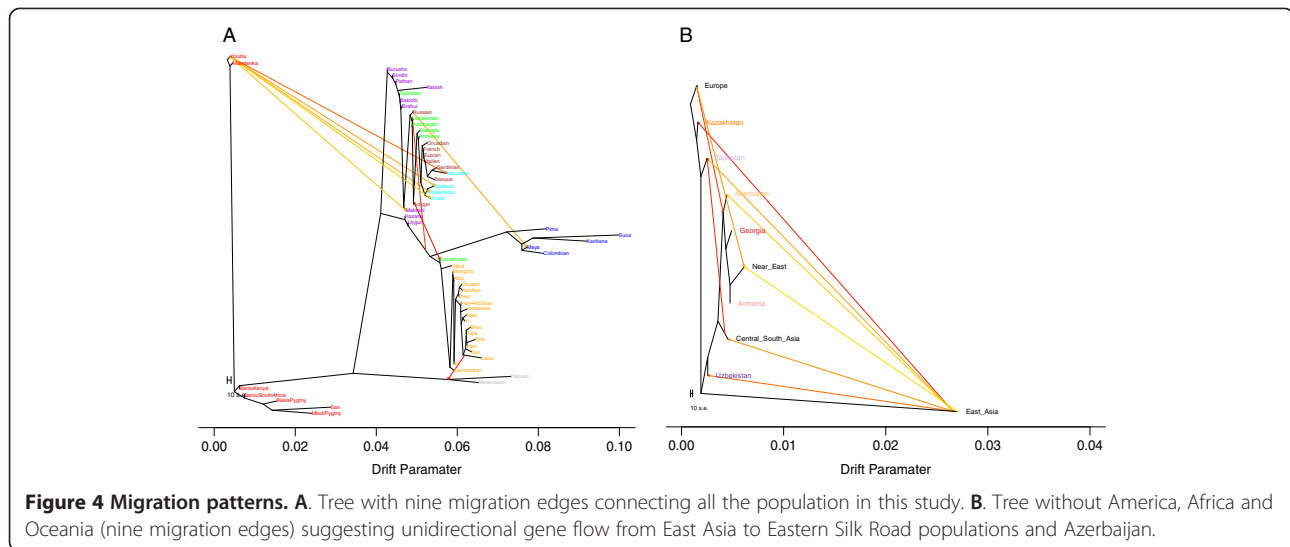
We used two approaches to evaluate the role and effects of gene flow among populations in this study. Firstly, we assessed admixture for each population from any pair of other two populations using the three-population test for admixture [22,23]. All possible combinations of populations were performed, but we reported only results with Z-score < -5 in Additional file 1: Table S2. Overall, Z-score results indicate little or no gene flow in WSR,

except for a number of contributions to Azerbaijan (mainly for Armenia and East Asia, see Additional file 1: Table S2), including contributions from American populations that we interpret more as a shared origin rather than an introgression. On the contrary, many migration events in the ESR are observed. Uzbekistan and Kazakhstan show the highest level of mixing in accordance with results from ADMIXTURE and PCA analyses (Figure 1), whereas Tajikistan received contributions mainly from Central-South Asian populations. We concluded that, as for admixture, we observed clearly different patterns of migrations in the WSR compared to the ESR, with more migration events taking place in the ESR, consistently to the degree of admixture that we inferred.

In order to look in more detail at migrations, we built a tree of all populations through ancestry graph analysis [23] (Figure 4). The tree structure recapitulates the known (existing) relationships among these populations, and highlights the great complexity of this geographical area, as previously shown by the neighbor joining tree, based on the time of divergence (Figure 2). The tree built with all the populations from HGDP reaches the maximum variance explained (99.7%) with the lowest standard error of residuals, with nine migration edges (Figure 4A). The tree shows the WSR populations compacted near Europe and the Near East, whereas the ESR populations are scattered (Figure 4A). Tajikistan falls with Central-South Asia; Kazakhstan with East Asia with



**Figure 3 Cumulative distribution of runs of homozygosity.** The x-axis indicates the total homozygosity in the genome in Megabases (Mb). Minimum ROH length was set to 2Mb.



a migration from Adygei; Uzbekistan is the target of a migration from the branch which connects East Asian and Americans.

To focus only on migrations relevant to the Silk Road populations, we built a tree removing Africa, Oceania and America (Figure 4B). The resulting tree with 9 migration edges explains 99% of the variance that was observed. Six migration edges connect East Asia with the SR. Indeed, with this analysis we pinpoint the gene flow from East Asia to the ESR and we estimate that the fraction of alleles that East Asia donated as source to other populations, ranges from 0.14 to 0.44, major recipient being Kazakhstan (Table 1). Tajikistan also received a consistent contribution (0.42) from Central-South Asia, thus highlighting the different history of this population within the ESR. As expected, we found gene flow from Europe to the WSR (0.39 towards Georgia and Azerbaijan) and a very low contribution of East Asia to Azerbaijan (0.05), but not to the other WSR populations. With these analyses we identified and

quantified gene flow within the SR. Our results suggest unidirectional gene flow from East Asia to the ESR, and apparently this gene flow never reached the WSR, except for Azerbaijan, that was affected in a minor mode.

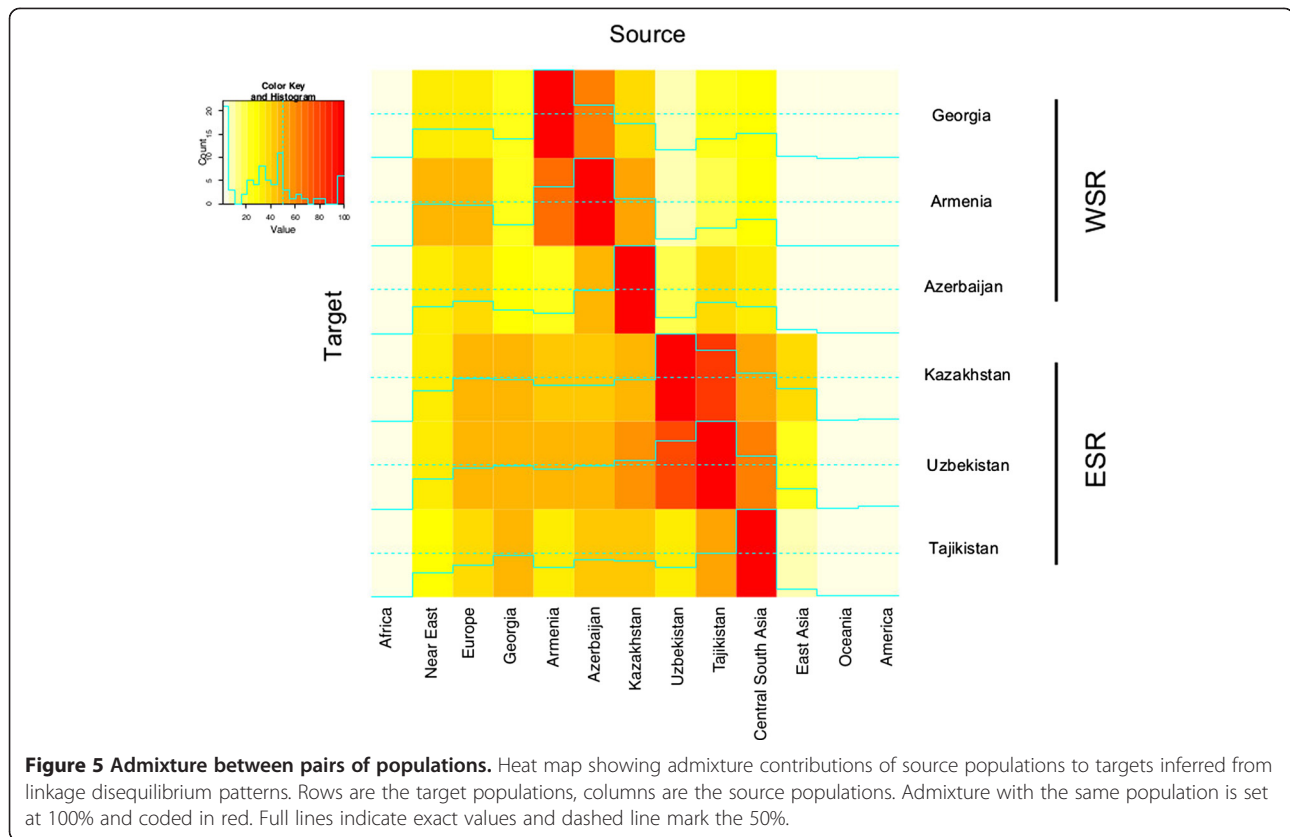
**To what extent populations admixed?**

Having assessed the general pattern of genetic relationships between populations, we next quantified admixture between populations. We first estimated the fraction of reciprocal contributions using ALDER [24] with 1 reference curve. In Figure 5 we summarized fractions of contributions from source populations to target. We estimated that the WSR received contributions from Europe and Near East in a measure of 40-50%. Armenia shows the highest level of Near East ancestry (48%) and Azerbaijan is the only population receiving significant contributions from the ESR (Kazakhstan 18%, Uzbekistan 35%). Among the ESR populations and in general, Uzbekistan and Kazakhstan are the more admixed populations with contributions of respectively 47% and 48% from Europe, and 49% and 47% from Central-South Asia. For these two populations, admixture within the SR is also high, ranging from 40% to 80%, and they also have the highest score of admixture (~80%) between themselves. Finally, East Asian components are higher in Kazakhstan compared to Uzbekistan and Tajikistan, as reported previously [25]. These results are consistent with ADMIXTURE analyses that we illustrated in a previous section. We also corroborated these observations by evaluating haplotype sharing among populations through chromosome painting. We used SupportMix [26] to assign haplotypes of individuals in SR populations to reference populations in the HGDP panel. In Additional file 2: Figure S9 we summarized the fraction of loci in target SR populations assigned to reference HGDP populations and

**Table 1 Migration edges estimates from Treemix**

Source	Target	Allele sharing (standard deviation) in %
East Asia	Kazakhstan	44 (0.8)
East Asia	Uzbekistan	27 (0.1)
East Asia	Tajikistan	14 (0.2)
Central-South Asia	Tajikistan	42 (2.3)
Europe	Georgia/Azerbaijan/ Near East/Armenia	39 (1)
East Asia	Azerbaijan	5.1 (0.2)
Europe	Near East	18 (0.9)
East Asia	Central-South Asia	18 (0.05)
East Asia	Near East	1.5 (0.3)





we observe that these are consistent with admixture trends estimated from ALDER and ADMIXTURE. Details of SupportMix analyses are reported in Additional file 1: Table S3.

To sum up, our data demonstrated poor admixture between the WSR and the ESR: only Azerbaijan seems to have a connection with the ESR. Within the WSR there is a non-negligible contribution of the Near East to Azerbaijan, but not to Georgia and Armenia, despite the three populations clustering together in the PCA analysis. Within the ESR, Tajikistan is generally less admixed than the other two populations. This could reflect a history of isolation and related low gene flow within the ESR, as suggested by the pattern of long stretches of homozygosity (Figure 3). Finally, Uzbekistan and Kazakhstan are the more admixed, both between themselves, and with respect to others, as hypothesized from PCA analyses (Figure 1).

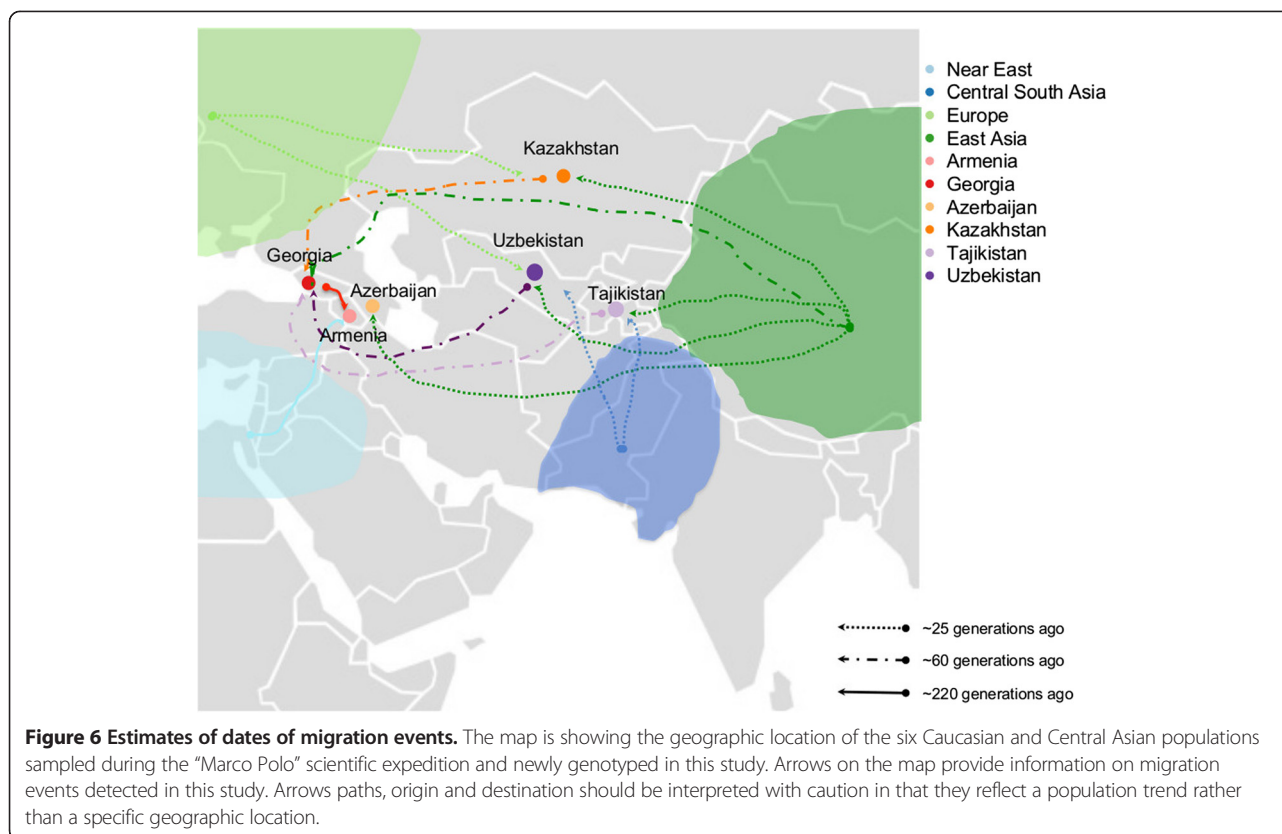
#### When did admixture events take place?

We inferred the time in generations during which main migration events took place from patterns of linkage disequilibrium decay [24], and reported results that remain significant after Bonferroni's correction in Additional file 1: Table S4. Within the WSR, we observed quite ancient events: a flow from Georgia and the Near East

to Armenia ~210-220 generations ago (solid arrows in Figure 6), and a flow from the ESR and East Asia to Georgia ~60 generations ago (dot and line arrows in Figure 6). Among recent events (~25 generations ago, dashed lines in Figure 6) in the WSR, we observed contributions of East Asia to Azerbaijan (consistent with the results in the previous section); ESR populations instead are characterized by several introgressions from Central-South and East Asia.

The overall picture is of a flux around 25 generations ago from Central-South and East Asia towards the West that only reached Azerbaijan through the WSR, and this is consistent with the gradient of contributions of Central-South and East Asia described in Figure 5. Considering a generation time of 25 years, this scenario is compatible with the Mongolian Empire expansion, as can be observed in [8]. Finally, Tajikistan shows an additional event, even more ancient, involving Central-South Asia ~40 generations ago, which could explain the high level of haplotype sharing obtained using SupportMix compared to Uzbekistan and Kazakhstan, thus confirming a previous study based on Y chromosome [27].

Having demonstrated that indeed admixture took place among the populations that were taken into account for this study, and having assessed directions of migrations, thanks to these analyses, we now add extra information



on times during which these events might have occurred. Time estimates should be interpreted with caution, but in combination with historical information might be useful to understand past events.

### Conclusions

We provided a detailed description of some demographic events that shaped genetic diversity in some of the populations along the Silk Road. We observed high genetic heterogeneity in patterns of admixture and genetic structure. We identified a main subdivision in Western and Eastern Silk Road and an East-West gradient of East Asia contribution reaching only Azerbaijan within the West and taking place ~25 generations ago, a time compatible with the Mongolian expansion. A fine-scale resolution of these admixture events will be possible with whole genome sequencing of these populations. Our findings provide a catalogue of genetic variation that will help to better understand the phenotypic variations that we previously described in these countries [9-12,28] and provide information on time and extent of past migration events that can be integrated with historical studies.

### Methods

#### Ethic statement

All communities belong to the Terra Madre organization ([www.terramadre.org](http://www.terramadre.org)). Approval for information collection

and processing has been obtained by the Ethical committee of the Maternal and Child Health Institute IRCCS-Burlo Garofolo Hospital (Trieste, Italy). All individuals signed an appropriate consent form (written in their local language) after they were instructed about the project, and all samples were completely anonymous.

In addition to the Italian Ethical committee approval we obtained the approval from the local Ethical committee and from the National Council on Bioethics in Georgia. For other countries where Ethical Committee were not present at the time of sampling we received authorization through official direct approval letters by National Authorities (Ministry of Research or Ministry of Health).

#### Samples and genotypes

Subjects in this study have been enrolled as part of the scientific campaign “Marco Polo”, aimed at collecting social, genotype and phenotype information from populations of central Asia and Caucasus along the Silk Road. Populations in this study originate from West to East: Georgia, Armenia, Azerbaijan, Uzbekistan, Kazakhstan, Tajikistan and for the sake of simplicity we will collectively refer to them as the Silk Road populations, even if they are not fully representative of the entire range of countries along the Silk Road (Additional file 1: Table S1). Samples of saliva were collected in these countries from healthy donors from rural communities (Georgia, Azerbaijan,

Armenia, Tajikistan or from both rural communities and cities (Uzbekistan, Kazakhstan). DNA was extracted from samples that were collected, and it was used to determine genotypes at 624,851 single nucleotide polymorphic sites (SNPs) as described in a previous study [28]. For all subsequent analyses we used Plink v.1.07 [29] unless differently specified. Genomic coordinates refer to the GRCh37/hg19 version of the human genome sequence. Relatedness among pairs of individuals within populations was calculated as the proportion of genome that is identical by descent ( $\pi_{\text{hat}}$  in Plink) and one random individual per pair related above first or second cousins ( $\pi_{\text{hat}} > 0.25$ ) was kept for subsequent analyses. After removing individuals that failed genotype quality controls and/or were related, the final sample consisted of 441 individuals. As reference populations, we used publicly available data from HGDP [13], after removing related subjects as suggested in [30]. We merged genotype information from the Silk Road populations with HGDP genotypes at the 22 autosomal chromosomes filtering for minor allele frequency  $> 1\%$ , and genotyping success rate  $> 97\%$ . After quality controls, the merged data set consisted of 299,899 SNPs genotypes.

#### Population structure, effective population size and time of divergence estimates

Shared ancestry between populations was evaluated using ADMIXTURE v 1.22 and the number of cluster that better represent the data was established by cross-validation as described in [14]. Each ADMIXTURE run was replicated 5 times using different random seeds. Principal Component Analysis (PCA) analysis was performed using EIGENSOFT [31], considering the difference in sample size between our populations and HGDP ones. Our samples from the Silk Road were projected using the axis obtained from the HGDP populations. PCA and ADMIXTURE were performed on a linkage disequilibrium (LD) pruned dataset ( $r^2 < 0.4$ ), consisting of 186,267 SNPs.

Runs of homozygosity (ROH) were calculated using 299,899 SNPs. A ROH is defined as a chunk of genome  $\geq 2000$  kb long, containing at least 100 SNPs, with SNP density  $> = 1$  per 50 kb. Within a ROH one heterozygous SNP and five missing calls are allowed. Two consecutive ROHs are considered as a single unit if their distance is  $\leq 1$  Mb. Coefficient of inbreeding was estimated using the function *-het* implemented in PLINK. Demography and long-term effective population size were estimated by using linkage disequilibrium information as described in [16]. Since this method requires the genetic map position to be known, we used HapMap recombination map to assign a genetic position. Time of divergence between populations was estimated as described in [16] implemented in the R package NeON

[32], a unrooted neighbour joining tree was built using the R package ape [33]. The generation time considered is of 25 years per generation.

#### Time of admixture and gene flow

Treemix v1.12 [23] was used to estimate maximum likelihood tree of our populations. Two different datasets were used: the first one with all the population and the second with population merged as continental groups without Africa, America and Oceania (see Additional file 1: Table S1 for group labeling). Zero to 12 migration edges were modeled, using blocks of 500 SNPs and the *-se* option was used to calculate standard errors. The tree was rooted with Yoruba when using the dataset with all the populations. Migration edges were added until the model explained 99% of the variance and also the migration edges were significant. Migration rate was estimated from Treemix run for the best tree selected. A Three-population test [22] was used to assess evidence of admixture in each of the six Silk Road population, values with a Z-score of less than  $-5$  were collected. Level and time of admixture events were estimated using ALDER v.1.0 .3 [24], considering the high number of possible comparisons and to avoid bias in allele frequencies due to small samples, we merged each reference population in continental groups.

Significance of the admixture was assessed after Bonferroni's correction and consisted in the decay of linkage disequilibrium. In addition the level of admixture was assessed for each population using as reference for the population of the Silk Road only one population at the time. As an additional approach, we applied a machine learning method, SupportMix [26], to estimate genome-wide ancestry. This method allows to infer loci-specific genomic ancestry when analyzing different reference populations. SupportMix was run on phased datasets using a sliding window of 500 Kb for each chromosome and each individual. The mean percentage of the assigned chunk of genomes to each continental group was collected as well. Phasing was obtained using BEAGLE [34]. A mean value of assigned loci was calculated for each population of the Silk Road.

#### Additional files

**Additional file 1: Table S1.** Population description and sample size.  
**Table S2.** Three population test statistic. Only results with Z-score  $< -5$  are reported and only when populations belong to different continental groups.  
**Table S3.** SupportMix mean percentage of assigned loci across all 22 chromosomes. Rows are the references, columns are the targets.  
**Table S4.** Time of admixture estimate using ALDER.

**Additional file 2: Figure S1.** Principal component analysis of populations from the Silk Road newly genotyped in this study (in color) with populations in the Human Genome Diversity Project panel (in grey). Silk Road populations, and especially Uzbekistan and Kazakhstan, span



over a large region of the plot, suggesting great genetic diversity among individuals. The first axis explain the 5.6% of the variance, the second axis 4.3% of the variance. **Figure S2.** Admixture plots for the hypotheses of 8, 9 and 10 clusters (K). The most likely hypothesis (K=10) shows little or no contribution from Africa, America and Oceania to populations newly genotyped in this study. **Figure S3.** Principal Component Analysis of a subset of worldwide populations. Representation of components 3 to 6. **Figure S4.** Admixture plots for the hypotheses of 4,6 and 8 clusters (K) in a subset of populations. **Figure S5.** Inbreeding coefficients. Averages of individuals inbreeding coefficients (y-bars represent standard deviation) per population or group of populations. **Figure S6.** Cumulative distribution of runs of homozygosity. The x-axis indicate the total homozygosity in the genome in Megabases (Mb). We set the minimum ROH length to 2 Mb. **Figure S7.** Effective population size through time. The y-axis represent the effective population size (Ne), the x-axis the time in the past. Generation time is 25 years. **Figure S8.** Long term estimate of the effective population size. **Figure S9.** Proportions of admixture between pairs of populations inferred from haplotype sharing. On the y-axis the mean percentage (estimated across 22 autosomes) of genomic segment assigned to different continental groups (see colors in the legend) per each population on the x-axis.

#### Abbreviation

SR: Silk Road;  $N_e$ : Effective population size; ROH: Runs of homozygosity; WSR: Western Silk Road; ESR: Eastern Silk Road.

#### Competing interest

The authors declared that they have no competing interests.

#### Authors' contributions

MM, VC, PG conceived and designed the study. GG, PG, NP, DV, PDA collected samples, MM analyzed the data. MM, VC wrote the paper. All authors read and approved the final manuscript.

#### Acknowledgments

We wish to thank all the subjects from the populations of Georgia, Armenia, Azerbaijan, Kazakhstan, Uzbekistan and Tajikistan who donated saliva samples for DNA analyses. We also wish to thank Irene Dall'Ara and Guido Barbujani for their contributions in the early stage of the project and Qasim Ayub and Chris Tyler-Smith for comments and suggestions on the manuscript. Finally, we thank two anonymous reviewers for helpful comments on the manuscript. The study was funded by the sponsors of the scientific expedition Marcopolo 2010, and by Ministry of Health RC 35/09 to PG. The funders had no role in study design, data collection and analysis, decision to publish, or preparation of the manuscript.

#### Author details

<sup>1</sup>Institute for Maternal and Child Health - IRCCS "Burlo Garofolo", Trieste, Italy. <sup>2</sup>Department of Medical Sciences, University of Trieste, Trieste, Italy. <sup>3</sup>Institute of Genetics and Biophysics 'A. Buzzati-Traverso', National Research Council (CNR), via Pietro Castellino 111, 80131 Naples, Italy.

Received: 17 June 2014 Accepted: 19 November 2014

Published online: 05 December 2014

#### References

1. Cavalli-Sforza LL, Menozzi P, Piazza A: *The History and Geography of Human Genes*. Princetown, New Jersey: Princeton University Press; 1994.
2. Maca-Meyer N, González AM, Larruga JM, Flores C, Cabrera VM: **Major genomic mitochondrial lineages delineate early human expansions.** *BMC Genet* 2001, **2**:13.
3. Comas D, Calafell F, Mateu E, Perez-Lezaun A, Bosch E, Martínez-Arias R, Clarimon J, Facchini F, Fiori G, Luiselli D: **Trading genes along the silk road: mtDNA sequences and the origin of central Asian populations.** *Am J Hum Genet* 1998, **63**(6):1824–1838.
4. Wells RS, Yuldashova N, Ruzibakiev R, Underhill PA, Evseeva I, Blue-Smith J, Jin L, Su B, Pitchappan R, Shanmugalakshmi S: **The Eurasian heartland: a continental perspective on Y-chromosome diversity.** *Proc Natl Acad Sci U S A* 2001, **98**(18):10244–10249.
5. Karafet T, Xu L, Du R, Wang W, Feng S, Wells RS, Redd AJ, Zegura SL, Hammer MF: **Paternal population history of East Asia: sources, patterns, and microevolutionary processes.** *Am J Hum Genet* 2001, **69**:615–628.
6. Martínez-Cruz B, Vitalis R, Ségurel L, Austerlitz F, Georges M, Théry S, Quintana-Murci L, Hegay T, Aldashev A, Nasyrova F: **In the heartland of Eurasia: the multilocus genetic landscape of Central Asian populations.** *Eur J Hum Genet* 2011, **19**:216–223.
7. Colonna V, Boattini A, Guardiano C, Dall'Ara I, Pettener D, Longobardi G, Barbujani G: **Long-range comparison between genes and languages based on syntactic distances.** *Hum Hered* 2010, **70**:245–254.
8. Hellenthal G, Busby GB, Band G, Wilson JF, Capelli C, Falush D, Myers S: **A genetic atlas of human admixture history.** *Science* 2014, **343**:747–751.
9. Pirastu N, Robino A, Lanzara C, Athanasakis E, Esposito L, Tepper BJ, Gasparini P: **Genetics of food preferences: a first view from silk road populations.** *J Food Sci* 2012, **77**:S413–S418.
10. Robino A, Mezzavilla M, Pirastu N, Dognini M, Tepper BJ, Gasparini P: **A population-based approach to study the impact of PROP perception on food liking in populations along the Silk Road.** *PLoS One* 2014, **9**:e91716.
11. Ulivi S, Mezzavilla M, Gasparini P: **Genetics of eye colours in different rural populations on the Silk Road.** *Eur J Hum Genet* 2013, **21**:1320–1323.
12. Giroto G, Pirastu N, Gasparini A, D'Adamo P, Gasparini P: **Frequency of hearing loss in a series of rural communities of five developing countries located along the Silk Road.** *Audiol Med* 2011, **9**:135–140.
13. Li JZ, Absher DM, Tang H, Southwick AM, Casto AM, Ramachandran S, Cann HM, Barsh GS, Feldman M, Cavalli-Sforza LL: **Worldwide human relationships inferred from genome-wide patterns of variation.** *Science* 2008, **319**:1100–1104.
14. Alexander DH, Novembre J, Lange K: **Fast model-based estimation of ancestry in unrelated individuals.** *Genome Res* 2009, **19**:1655–1664.
15. Jakobsson M, Scholz SW, Scheet P, Gibbs JR, VanLiere JM, Fung H-C, Szpiech ZA, Degnan JH, Wang K, Guerreiro R: **Genotype, haplotype and copy-number variation in worldwide human populations.** *Nature* 2008, **451**:998–1003.
16. McEvoy BP, Powell JE, Goddard ME, Visscher PM: **Human population dispersal "Out of Africa" estimated from linkage disequilibrium and allele frequencies of SNPs.** *Genome Res* 2011, **21**:821–829.
17. Kirin M, McQuillan R, Franklin CS, Campbell H, McKeigue PM, Wilson JF: **Genomic runs of homozygosity record population history and consanguinity.** *PLoS One* 2010, **5**:e13996.
18. Pemberton TJ, Absher D, Feldman MW, Myers RM, Rosenberg NA, Li JZ: **Genomic patterns of homozygosity in worldwide human populations.** *Am J Hum Genet* 2012, **91**:275–292.
19. Weir BS, Hill WG: **Effect of mating structure on variation in linkage disequilibrium.** *Genetics* 1980, **95**:477–488.
20. Tenesa A, Navarro P, Hayes BJ, Duffy DL, Clarke GM, Goddard ME, Visscher PM: **Recent human effective population size estimated from linkage disequilibrium.** *Genome Res* 2007, **17**:520–526.
21. Hayes BJ, Visscher PM, McPartlan HC, Goddard ME: **Novel multilocus measure of linkage disequilibrium to estimate past effective population size.** *Genome Res* 2003, **13**:635–643.
22. Reich D, Thangaraj K, Patterson N, Price AL, Singh L: **Reconstructing Indian population history.** *Nature* 2009, **461**:489–494.
23. Pickrell JK, Pritchard JK: **Inference of population splits and mixtures from genome-wide allele frequency data.** *PLoS Genet* 2012, **8**:e1002967.
24. Loh P-R, Lipson M, Patterson N, Moorjani P, Pickrell JK, Reich D, Berger B: **Inferring admixture histories of human populations using linkage disequilibrium.** *Genetics* 2013, **193**:1233–1254.
25. Dulik MC, Osipova LP, Schurr TG: **Y-chromosome variation in Altaian Kazakhs reveals a common paternal gene pool for Kazakhs and the influence of Mongolian expansions.** *PLoS One* 2011, **6**:e17548.
26. Omberg L, Salit J, Hackett N, Fuller J, Matthew R, Chouchane L, Rodríguez-Flores JL, Bustamante C, Crystal RG, Mezey JG: **Inferring genome-wide patterns of admixture in Qataris using fifty-five ancestral populations.** *BMC Genet* 2012, **13**:49.
27. Haber M, Platt DE, Bonab MA, Youhanna SC, Soria-Hernanz DF, Martínez-Cruz B, Douaihy B, Ghassibe-Sabbagh M, Rafatpanah H, Ghanbari M: **Afghanistan's ethnic groups share a Y-chromosomal heritage structured by historical events.** *PLoS One* 2012, **7**:e34288.
28. Ulivi S, Mezzavilla M, Gasparini P: **Genetics of eye colours in different rural populations on the Silk Road.** *Eur J Hum Genet* 2013, **21**(11):1320–1323.
29. Purcell S, Neale B, Todd-Brown K, Thomas L, Ferreira MA, Bender D, Maller J, Sklar P, De Bakker PI, Daly MJ: **PLINK: a tool set for whole-genome**

association and population-based linkage analyses. *Am J Hum Genet* 2007, **81**:559–575.

30. Rosenberg NA: Standardized subsets of the HGDP-CEPH Human Genome Diversity Cell Line Panel, accounting for atypical and duplicated samples and pairs of close relatives. *Ann Hum Genet* 2006, **70**:841–847.
31. Patterson N, Price AL, Reich D: Population structure and eigenanalysis. *PLoS Genet* 2006, **2**:e190.
32. NeON. [<http://www.unife.it/dipartimento/biologia-evoluzione/ricerca/evoluzione-e-genetica/software>]
33. ape. [<http://cran.r-project.org/web/packages/ape/index.html>]
34. Browning SR, Browning BL: Rapid and accurate haplotype phasing and missing-data inference for whole-genome association studies by use of localized haplotype clustering. *Am J Hum Genet* 2007, **81**:1084–1097.

doi:10.1186/s12863-014-0131-6

**Cite this article as:** Mezzavilla et al.: Genetic landscape of populations along the Silk Road: admixture and migration patterns. *BMC Genetics* 2014 **15**:131.

**Submit your next manuscript to BioMed Central  
and take full advantage of:**

- Convenient online submission
- Thorough peer review
- No space constraints or color figure charges
- Immediate publication on acceptance
- Inclusion in PubMed, CAS, Scopus and Google Scholar
- Research which is freely available for redistribution

Submit your manuscript at  
[www.biomedcentral.com/submit](http://www.biomedcentral.com/submit)

