

# An optimized Protocol for Human M2 Macrophages using M-CSF and IL-4/IL-10/TGF- $\beta$ Yields a Dominant Immunosuppressive Phenotype

S. Mia\*, A. Warnecke\*, X.-M. Zhang\*, V. Malmström† & R. A. Harris\*

## Abstract

Monocytes are highly abundant circulatory effector cells and play a vital role in driving or resolving inflammatory processes depending on their activation phenotype. We investigated and compared a panel of polarization protocols of blood-derived monocytes to achieve a stable, optimal and effective regimen for *in vitro* induction of immunosuppressive human macrophages, evaluating their surface receptor expression, cytokine profile, scavenging function and ability to suppress T-cell proliferation. Importantly, we assessed the effect of copolarization or secondary pro-inflammatory stimulation of a primary anti-inflammatory activation phenotype. A combination of IL-4/IL-10/TGF- $\beta$  yielded a relatively stable and dominant immunosuppressive phenotype characterized by higher IL-10 production and down-regulated TNF- $\alpha$ , IL-6, CD86, CD274 and MHC II expression. Functionally, IL-4/IL-10/TGF- $\beta$ -stimulated macrophages (M2) had a potent deactivating effect on a subsequent pro-inflammatory LPS/IFN $\gamma$ -activated macrophage (M1) stimulation and significantly suppressed T-cell proliferation. Monocytes derived from patients with chronic inflammatory diseases could be induced to be anti-inflammatory using this protocol. Pre-differentiation with GM-CSF or M-CSF was further demonstrated to enhance final M1/M2 activation status. Our findings indicate a robust polarization protocol for generation of specific immunosuppressive human monocyte-derived macrophages.

\*Applied Immunology & Immunotherapy, Department of Clinical Neuroscience, Center for Molecular Medicine, Karolinska University Hospital at Solna, Karolinska Institutet, Stockholm, Sweden; and †Rheumatology Unit, Department of Medicine, Center for Molecular Medicine, Karolinska University Hospital at Solna, Karolinska Institutet, Stockholm, Sweden

Received 7 January 2014; Accepted in revised form 6 February 2014

Correspondence to: R. A. Harris, Applied Immunology & Immunotherapy, Department of Clinical Neuroscience, Center for Molecular Medicine, Karolinska University Hospital at Solna, Karolinska Institutet, Stockholm, Sweden. E-mail: Robert.Harris@ki.se

## Introduction

Monocytes are highly dynamic and versatile mononuclear phagocytes and are involved in steady-state homeostasis, innate immune surveillance, establishment and resolution in inflammation [1]. When appropriately activated, monocytes conduct context-dependent functions in inflammatory, antimicrobial or antitumour responses [2], the local environment phenotypically polarizing the monocytes into macrophages to enable these specific functions [3]. Distinct murine subsets (Ly6C<sup>high</sup>/Ly6C<sup>low</sup>) have specific roles in these processes [4], the spleen being a major reservoir of undifferentiated Ly6C<sup>high</sup> monocytes that are readily mobilized during inflammatory processes [5]. In contrast to blood monocytes, major tissue resident macrophage populations are now understood to originate from the yolk sac or foetal liver [6, 7], to proliferate locally [8, 9] and to transiently relocate early during focal inflammation [10].

Plasticity and diversity are the hallmarks of macrophage lineages. Two major extreme activation phenotypes have

been described in both rodents and humans, represented by M1 (classical or pro-inflammatory) and M2 (alternative or anti-inflammatory). It has become increasingly clear that there is an overlapping spectrum of these activation phenotypes [11]. We have previously compared induced macrophage activation phenotypes from autoimmune-resistant and autoimmune-susceptible rodent strains and have determined that autoimmune-susceptible strains have a common pro-inflammatory phenotype that leads to perpetuation of inflammation instead of its resolution [12]. Similar genetically determined aberrant macrophage phenotypes have also been reported for Type 1 diabetic NOD mice [13]. Taken together, this implies that there is a genetic predisposition for autoimmune susceptibility linked to monocyte-macrophage functionality.

The outcome of a focal inflammatory response will be the net result of the relative functions, activation states and numbers of differentially activated infiltrating and resident myeloid cells under the auspices of genetic influences and local environmental cues. In states of chronic inflammation such as autoimmune diseases, there is an apparent

imbalance in the pro-inflammatory (pathogenic) and anti-inflammatory (resolution) properties of myeloid cells.

Macrophage colony-stimulating factor (M-CSF) and granulocyte-macrophage colony-stimulating factor (GM-CSF) are not only important hematopoietic growth factors but also potent cytokines that are needed for cell survival, proliferation, differentiation and activation [14]. While circulating monocytes are exposed to M-CSF in the blood, exposure to GM-CSF will occur primarily in tissues upon their infiltration into sites of focal inflammation. Functional heterogeneity induced by colony-stimulating factors in monocyte-derived macrophages is well-documented [15], GM-CSF- and M-CSF-derived macrophages being hypothesized to be polarized to M1 and M2 states, respectively [16–18].

Gene expression profiling studies have reported important differences between human and mouse monocyte subsets [19], between different human monocyte subsets [20, 21], and distinct genetic fingerprints have even been reported for single human monocyte subsets [22]. We previously defined a protocol for induction of potent anti-inflammatory macrophages in mice [23]. The purpose of the current study was thus to refine this protocol to induce potent anti-inflammatory macrophages from human monocytes.

## Materials and methods

**Reagents.** Lipopolysaccharide (LPS) (Sigma, St. Louise, MO, USA), M-CSF and GM-CSF (PeproTech, Rocky Hill, NJ, USA) were applied at final concentrations of 50 ng/ml. Recombinant human cytokines IL-4, IL-10, IL-13, IFN $\gamma$  and TGF- $\beta$  (R&D Systems, Minneapolis, MN, USA) were applied at final concentrations of 20 ng/ml. Antibodies against CD86, CD273, CD274, CD14, CD206 (all BD Bioscience-Pharmingen, San Diego, CA, USA), HLA-DR (eBioscience, San Diego, CA, USA) and isotype control mouse IgG2a (BD Bioscience-Pharmingen and eBioscience), mouse IgG2b (BD Bioscience-Pharmingen), were used for flow cytometric analyses. Dextran Alexa Fluor 647, 10,000 MW, anionic (Life Technologies, Stockholm, Sweden) was used for endocytosis experiments at 10  $\mu$ g/ml.

**Monocyte isolation and purification.** Human monocytes were isolated and purified from peripheral blood mononuclear cells (PBMC) of buffy coats obtained from healthy volunteers (Clinical Immunology and Transfusion Medicine Department of Karolinska Institutet, Sweden) using Ficoll-Hypaque (GE Healthcare, Uppsala, Sweden) according to the manufacturer's instructions. After isolation from the PBMC using a CD14<sup>+</sup> selection kit (Miltenyi, Biotech, GmbH, Germany), monocytes were cultured at a concentration of  $2 \times 10^5$ /ml in RPMI 1640 (Gibco, Grand Island, NY, USA), supplemented with 10% heat-inactivated foetal bovine serum (FCS; Sigma), 100 U/ml penicillin, 100  $\mu$ g/ml streptomycin, 2 mM L-glutamine and

20  $\mu$ M  $\beta$ -mercaptoethanol (all reagents from Life Technologies, Stockholm, Sweden). A total of 25 independent donors were used with minimal variation observed, and for each analysis, at least four different donors are represented.

Peripheral blood mononuclear cells were also obtained from 12 relapsing-remitting multiple sclerosis patients (seven males and five females with median age 39 years) from the in-house biobank of the Neurology Clinic of Karolinska Hospital, Sweden. Blood samples of nine spondylarthrititis (SpA) (six female and three male with median age 43 years) were collected from the Rheumatology Clinic of Karolinska Hospital, Sweden. All patients were receiving medication and gave their informed consent, and the studies were approved by the local ethical committee.

**Monocyte polarization, differentiation and activation.** Overnight-plated monocytes were polarized for 24 h to M1 macrophages using LPS and IFN $\gamma$  and to M2 macrophages by different combinations of IL-4, IL-10, IL-13 and TGF- $\beta$ , or left untreated for the duration of the culture (M0). The cytokine doses were 20 ng/ml and LPS was used at 50 ng/ml. Monocytes were also pre-differentiated into macrophages by culture for 6 days in RPMI/10% FCS supplemented with 50 ng/ml of either M-CSF or GM-CSF in 6-well culture plates at a cell concentration of  $2 \times 10^6$ /ml.

**Flow cytometry.** Twenty-four hour-stimulated monocytes were stained with a cocktail of mAbs (PE-CD163, FITC-CD80, PerCP-Cy<sup>TM</sup> 5.5-CD86, APC-CD206, PE-Cy<sup>TM</sup> 7-CD274, and Pacific blue-HLA-DR) and dead cell markers (Life Technologies) with appropriate isotype control stainings. Samples were acquired with a Gallios flow cytometer (Beckman Coulter, Brea, CA, USA) and analysed using Kaluza v1.1 software (Beckman Coulter). Expression was quantified using median fluorescence intensity (MFI) of the marker of interest. Isotype controls were applied to control for background signals.

**Endocytosis assay.** Endocytosis of polarized monocytes was measured by cellular uptake of 10  $\mu$ g/ml Dextran Alexa Fluor 647 (Life Technologies) for 2 h at 37 °C and quantified by flow cytometry. Propidium iodide was used to exclude dead cells. MFI of Alexa-dextran was quantified by flow cytometry.

**ELISA cytokine analysis.** ELISA kits for detection of secreted TNF- $\alpha$ , IL-6, TGF- $\beta$  and IL-10 in cell culture supernatants were purchased from R&D Systems and used according to the manufacturer's instructions.

**T-cell suppression assay.** Optimization of the ratio between macrophages and PBMC determined that a 1:4–1:8 macrophage/ PBMC ratio was effective for T-cell suppression. For the assay,  $25 \times 10^3$ /well macrophages and 10–20  $\times 10^4$  autologous PBMC were incubated for 72 h in a total volume of 200  $\mu$ l of complete media (RPMI+FCS) with 1  $\mu$ g/ml anti-CD3 (OKT3). Cells were

pulsed with 1  $\mu\text{Ci}/\text{well}$  [methyl- $^3\text{H}$ ] thymidine (Amersham, Aylesbury, UK) for 18 h before harvesting and analysis using a liquid  $\beta$ -scintillation counter.

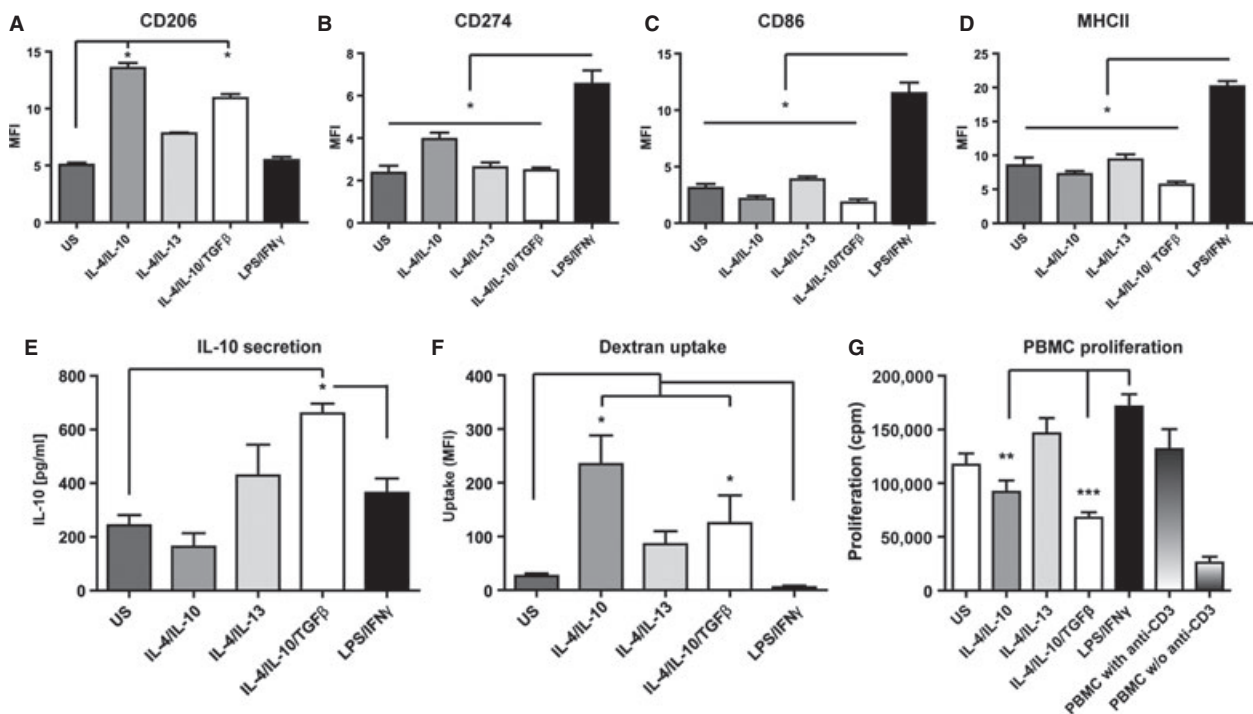
**RNA isolation, cDNA synthesis and RT-PCR.** RNA was isolated from  $1 \times 10^6$  cells/ml stimulated monocytes and RT-PCR performed as described [24]. Data were analysed using Bio-Rad's CFX Manager 2.0, and several housekeeping genes (i.e. GAPDH, HPRT,  $\beta$ -actin and 18S) were used for normalization. All experiments were related to untreated control. Primer sequences are listed in Supplementary Fig. 2. Heatmaps were generated in R ([www.r-project.org/](http://www.r-project.org/)) using donor median values. Rows and columns were subjected to unsupervised clustering using the distance function:  $1-\text{cor}(t(x))$  applying Spearman's correlation. The colour gradients are scaled for each gene.

**Statistical analysis.** Statistical significance was determined by Mann-Whitney  $U$ -test unless stated otherwise. PCR data were analysed using one-way ANOVA with Tukey's multiple comparison correction. A  $P < 0.05$  (\*) was considered significant. Statistical analysis was conducted using GraphPad software (San Diego, CA, USA).

## Results

### Monocyte polarization with IL-4/IL-10/TGF- $\beta$ induces a unique suppressive M2 macrophage phenotype

We first screened phenotypes of healthy blood donor-derived monocytes with a panel of polarization protocols. We used a combination of LPS/IFN $\gamma$  as a potent M1 activation protocol, IL-4/IL-13 as a wound-healing M2 activation protocol and IL-4/IL-10 with or without TGF $\beta$  as deactivating M2 protocols. We assessed expression of surface receptors including costimulatory receptors (CD80, CD86, CD273 and CD274) together with MHC II and CD206 (mannose receptor). Our results revealed that CD206 was more highly expressed in M2 cells activated by IL-4/IL-10 or IL-4/IL-10/TGF $\beta$  (Fig. 1A), while CD274 (Fig. 1B), CD86 (Fig. 1C) and MHC II (Fig. 1D) were expressed at significantly higher levels in LPS/IFN $\gamma$ -stimulated cells than in M2 cells. The polarization protocols thus induce distinguishable macrophage phenotypes from human monocytes.



**Figure 1** *In vitro* characterization of polarized monocytes. Levels of (A) CD206, (B) CD274, (C) CD86 and (D) MHC II receptor expression analysed by flow cytometry (FACS) following polarization of cells as indicated for 24 h. Results are representative of two separate experiments using different donors, and FACS plots are depicted in Figure S1. (E) IL-10 secretion was measured following stimulation of  $2 \times 10^5$  monocytes for 2 h followed by washing and further incubation for 24 h. (F) Endocytosis was assessed by stimulating  $0.5 \times 10^6$  monocytes for 24 h with the respective polarizing agents followed by 4 h incubation with Alexa Fluor 647-coupled dextran. Bars represent mean fluorescence intensity. Results are representative of two separate experiments using different donors. Statistical comparisons were made against untreated (dark grey bars) and LPS/IFN $\gamma$  controls (black bars;  $n = 4/\text{group}$ ). (G) T-cell proliferation was determined by polarizing  $2.5 \times 10^4$  monocytes by the described combinations for 24 h, followed by washing and further coculture with PBMCs and  $\alpha\text{CD3}$  antibody for 72 h. Results are representative of three separate experiments using four independent donors. Statistical comparisons were made as indicated. Significance levels: \* $P < 0.05$ , \*\* $P < 0.01$ , \*\*\* $P < 0.001$ .

As IL-10 is a potent anti-inflammatory cytokine and plays a vital role in resolving inflammation, we investigated whether any of the M2 induction protocols had the ability to induce IL-10 secretion. The combination of IL-4/IL-10/TGF- $\beta$  induced significantly higher IL-10 secretion (Fig. 1E).

Endocytosis is involved in many important cellular functions during inflammation, including clearance of apoptotic cells and cellular debris from the local environment as well as antigen presentation. We therefore investigated how the panel of stimulants affected the endocytic properties of monocytes by measuring uptake of fluorescent dextran. The results clearly demonstrate that the combination of IL-4/IL-10 or IL-4/IL-10/TGF- $\beta$  induces endocytic activity (Fig. 1F).

Suppression of T-cell proliferation has been reported as a key feature of M2 cells in both tumour and inflammation biology settings. To address the suppressive ability of the M2 monocytes, we cocultured them with anti-CD3-activated PBMC. M2 monocytes stimulated with IL-4/IL-10/TGF- $\beta$  significantly suppressed T-cell proliferation compared to M1 monocytes (LPS/IFN $\gamma$  stimulated) that potentiated proliferation (Fig. 1G).

Taken together, these data indicate that the same cytokine combination (IL-4/IL-10/TGF- $\beta$ ) that was previously determined to be optimal for mouse macrophages could also induce human monocytes to adopt a potent anti-inflammatory M2 macrophage phenotype.

#### Hierarchy of macrophage activation states

We next investigated the hierarchy of M1/M2 activations through firstly copolarizing monocytes with both protocols simultaneously and then using sequential M2/M1 stimulations. We specifically addressed the net effects on pro-inflammatory M1 pathways in both of these experimental settings.

In the copolarization setting TNF- $\alpha$  (Fig. 2A), IL-6 (Fig. 2B) and IL-12 (Fig. 2C) levels were consistently significantly reduced compared to the LPS/IFN $\gamma$ -stimulated M1 control by the synergistic effects of IL-4/IL-10/TGF- $\beta$ . To determine the relative stability of the M2 phenotype following a secondary pro-inflammatory stimulation, we next first induced monocytes with M2 protocols for 24 h and then after washing stimulated with LPS/IFN $\gamma$  for an additional 24 h. Following this secondary challenge, IL-4/IL-10/TGF- $\beta$ -stimulated cells displayed elevated expression of MHC II (Fig. 2D) and CD86 (Fig. 2E), but importantly had low levels of TNF- $\alpha$  production (Fig. 2F) and secreted significantly higher levels of IL-10 (Fig. 2G).

These data thus indicate that IL-4/IL-10/TGF- $\beta$  treatment counteracts M1 activation during copolarization and induces a robust M2 phenotype in monocytes that does not appreciably switch to an M1 phenotype following secondary pro-inflammatory stimulation.

#### mRNA expression in M2 monocyte-derived cells

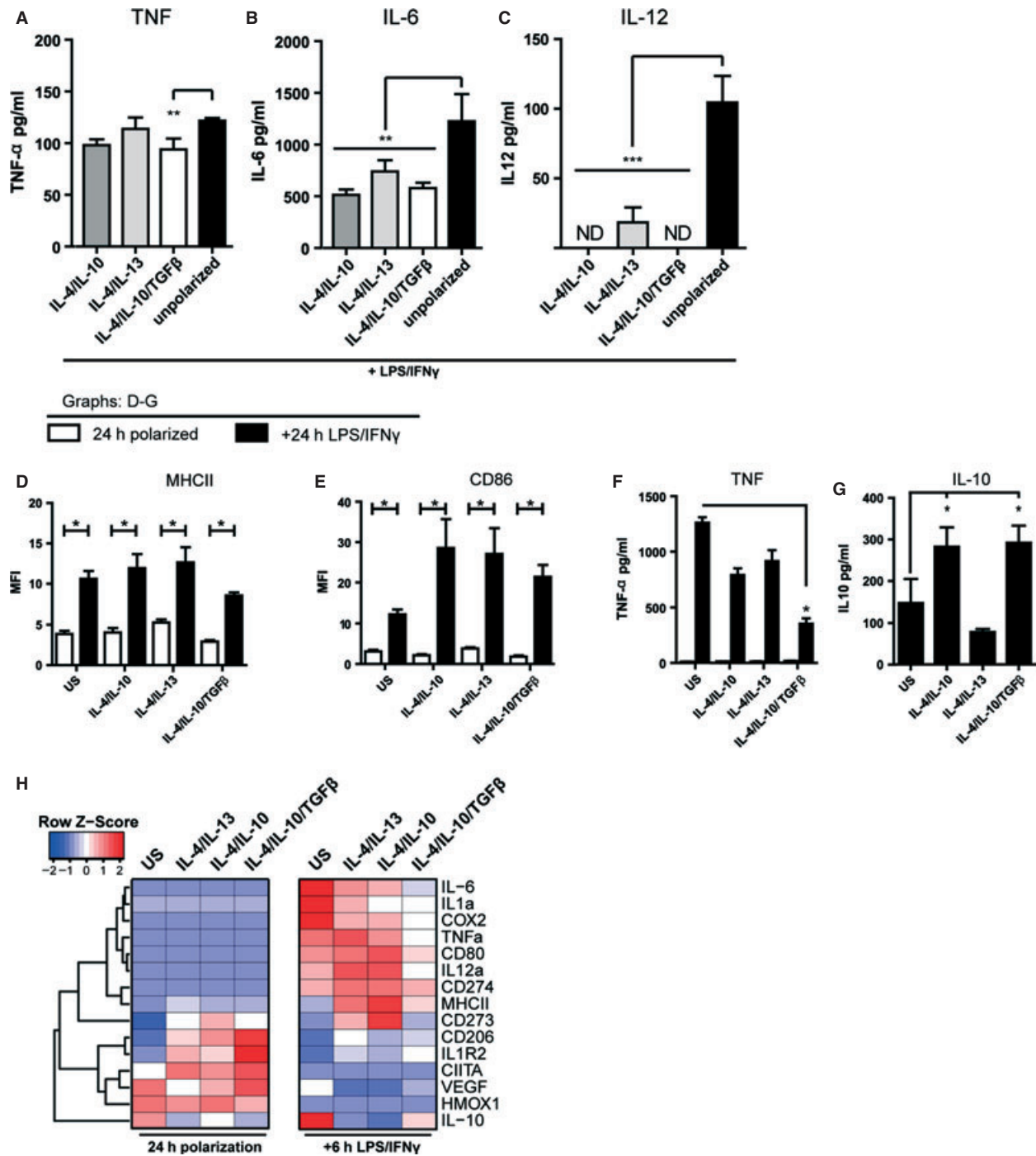
To extend the phenotypic analyses, we screened expression of a selected range of M1 and M2 transcriptional (mRNA) markers representative of both activation states following polarization of monocytes for 24 h (Fig 2H). The established M1- and M2-associated transcripts faithfully clustered away from each other as judged from the dendrogram (Fig 2H, left). The M2-associated markers (represented in the lower half), namely CD206, IL1R2, CIITA, VEGF and HMOX1, were most highly induced following polarization with IL-4/IL-10/TGF- $\beta$ .

To extend this analysis, primarily M2-polarized cells were secondarily challenged with LPS/IFN $\gamma$  (M2→M1, Fig 2H right-hand panel). A clear response to M1 stimulation was that M1-associated transcripts (upper half) were highly induced. However, in all M2-polarized cells, the levels of M1 markers were significantly lower, the reduction being most evident with IL-4/IL-10/TGF- $\beta$  polarized cells. Furthermore, M2 markers such as CD206 or IL1R2 were retained highest with IL-4/IL-10/TGF- $\beta$  polarization. Taken together, these data demonstrate firstly that distinct M2 phenotypes are induced depending on the combination of applied cytokines and secondly that IL-4/IL-10/TGF- $\beta$  polarization is relatively resistant to subsequent M1 conversion.

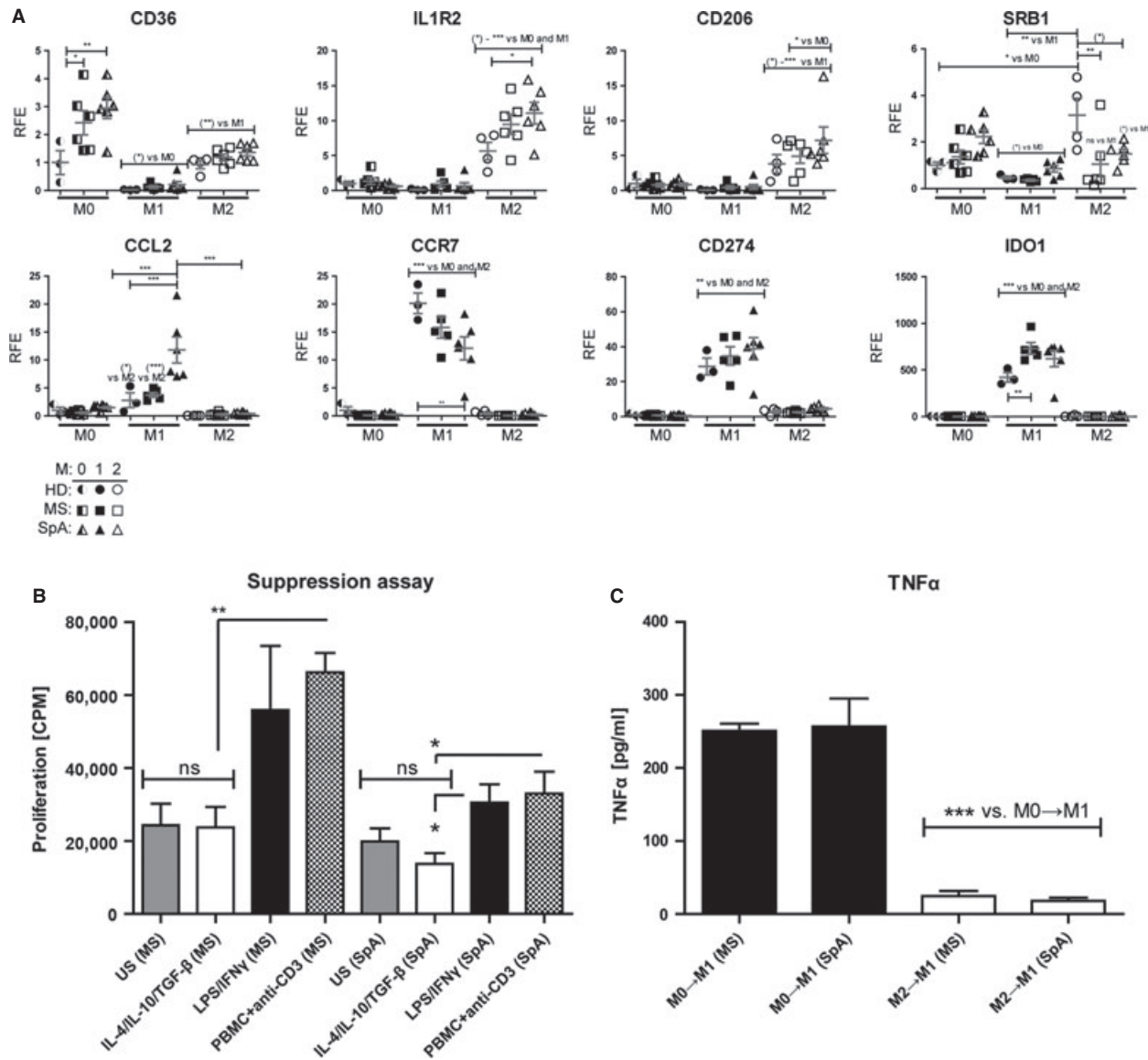
#### M2 monocytes are capable of suppressing T cells from individuals with autoimmune diseases

In states of chronic inflammation such as autoimmune diseases, the assumption is that there is a local dominance of pro-inflammatory immune activity over anti-inflammatory activity in the target organs of individuals with disease. One therapeutic possibility could thus be to adoptively transfer autologous, pre-activated, anti-inflammatory macrophages to down-regulate the pro-inflammatory pathogenesis locally, an approach we have successfully employed in different experimental models of autoimmune disease [25, 26]. A prerequisite for this approach is that it is possible to induce an anti-inflammatory phenotype in the monocytes of individuals with disease. We thus next investigated this possibility in a small cohort of samples from healthy controls or individuals with either multiple sclerosis (MS) or Spondylarthritis (SpA) using M0 (unstimulated), M1 (LPS/IFN $\gamma$ ) or M2 (IL-4/IL-10/TGF- $\beta$ ) polarization protocols.

Overall, we observed no consistent defects in the *in vitro* polarization of patient-derived monocytes in the selected targets assessed by RT-PCR as most followed the same trends as in the healthy controls (Fig 3A). These data demonstrate that comparable macrophage phenotypes to healthy controls, both M2 anti-inflammatory (upper row) and M1 pro-inflammatory (lower row), can be induced from



**Figure 2** The M2 macrophage phenotype is relatively stable. The relative potencies of M1 and M2 activations were assessed by applying both polarization protocols simultaneously to  $2 \times 10^5$  monocytes. All bars represent stimulation with LPS/IFN $\gamma$  and individual cytokine combinations or no stimulation (unpolarized) are indicated for each individual bar. Levels of secreted (A) TNF- $\alpha$ , (B) IL-6 and (C) IL-12 were measured by ELISA. Statistical comparisons were made against the LPS/IFN $\gamma$  controls (black bars,  $n = 4$ /group). M2 activation phenotype stability was evaluated by polarizing  $2 \times 10^5$  monocytes with the respective combinations for 24 h, followed by washing and sequential stimulation with LPS/IFN $\gamma$  for 24 h. Surface expression of (D) MHC II and (E) CD86 were assessed by FACS and production of (F) TNF- $\alpha$  (24 and 48 h), and (G) IL-10 (48 h) was assessed using ELISA. Results are representative of two separate experiments using independent donors ( $n = 4$ /group per experiment). Statistical comparisons were made as indicated. (H) Gene expression analysis of selected M1- and M2-associated transcripts in monocyte-derived cells following 24-h polarization and subsequent LPS/IFN $\gamma$  challenge for 6 h. Heatmaps depict relative expression levels. Significance levels: \* $P < 0.05$ , \*\* $P < 0.01$ , \*\*\* $P < 0.001$ .



**Figure 3** Autologous M2 monocytes are capable of suppressing T cells from individuals with chronic inflammatory diseases. Monocytes were purified from individuals with multiple sclerosis (MS) or spondylarthritis (SpA), or health donors (HD). (A) mRNA expression of selected M1 (LPS/IFN $\gamma$ )- and M2 (IL-4/IL-10/TGF- $\beta$ )- associated transcripts measured after 24 h of polarization. (B) 24-h polarized patient monocyte-derived cells were cocultured with patient PBMCs, and proliferation was assessed as described. (C) ELISA-based detection of TNF- $\alpha$  in supernatants of patient monocytes challenged simultaneously with M1 (LPS/IFN $\gamma$ ) and M0 (media control) or M2 (IL-4/IL-10/TGF- $\beta$ ) protocols, respectively. Significance levels: \* $P < 0.05$ , \*\* $P < 0.01$ , \*\*\* $P < 0.001$ .

monocytes from individuals with pro-inflammatory diseases using the employed polarization protocols.

We next assessed whether monocytes isolated from individuals with the chronic inflammatory conditions MS or SpA could be induced by the IL-4/IL-10/TGF- $\beta$  polarization protocol to exert anti-inflammatory effects. Our results demonstrated that IL-4/IL-10/TGF- $\beta$ -activated M2 cells could significantly suppress proliferation of autologous T cells in samples from both types of disease, respectively (Fig. 3B). Secondly, we observed a marked suppression of pro-inflammatory TNF- $\alpha$  secretion in M2 macrophages following simultaneous M1 activation

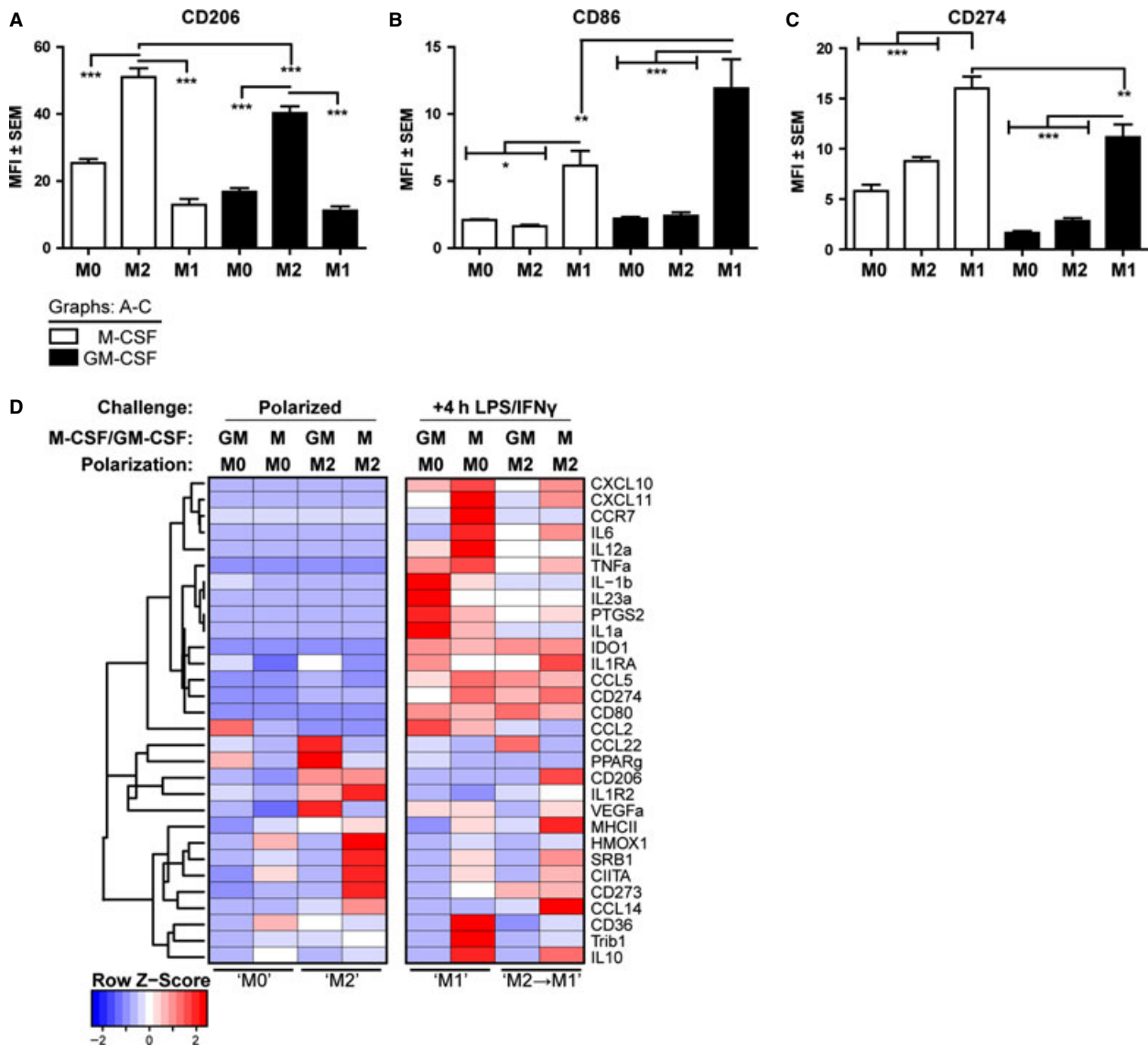
(Fig. 3C). This demonstrates that *in vitro* polarized M2 cells from patients with chronic pro-inflammatory diseases are still capable of being induced to exert immunosuppressive activities. At this point, it is not well studied to what degree there is heterogeneity in monocyte/macrophage phenotypes in healthy populations or to what degree current patient treatments or disease states affect their monocyte/macrophage phenotypes. We did, however, observe modestly elevated CD36 levels in M0 macrophages of both patient groups. In light of the restricted sample size, the results should be regarded as a proof-of-principle. Samples for an extended macrophage activation proteomics

study accounting for current disease state, treatment and age in much larger patient cohorts are currently being collected.

#### The effect of GM-CSF and M-CSF pre-differentiation on monocyte-derived macrophage activation phenotypes

The bone-marrow-derived mouse macrophages utilized in our previous study were standardly grown in M-CSF during initial differentiation into macrophages. As human monocytes are reported by some authors to represent M1

cells if differentiated with GM-CSF or M2 cells if differentiated with M-CSF, we systematically addressed the phenotypes following (1) only differentiation with each growth factor or (2) combining growth factor-induced differentiation with subsequent specific M1 or M2 activation. Flow cytometric analyses revealed that pre-differentiation with GM-CSF or M-CSF had different effects on resultant macrophage phenotypes. CD206 expression was elevated following M2 activation, with highest expression on M-CSF pre-differentiated macrophages (Fig. 4A). CD86 was elevated following M1 activation, with highest



**Figure 4** M2 monocyte activation phenotypes following M-CSF or GM-CSF pre-differentiation.  $2 \times 10^5$  monocytes were differentiated for 6 days with M-CSF or GM-CSF, and cells were further polarized to M0 (no additional stimulation, control), M2 (IL-4/IL-10/TGF- $\beta$ ) or M1 (LPS/IFN $\gamma$ ) states for 24 h. Levels of (A) CD206, (B) CD86 and (C) CD274 were analysed by flow cytometry. Statistical comparisons were made as indicated. Results are representative of two separate experiments using different donors. (D) An extended cluster analysis of mRNA transcript expression is presented for primary polarization following pre-differentiation (left panel) or following subsequent secondary challenge for 4 h with LPS/IFN $\gamma$  after the initial M0 or M2 polarizations. Individual gene transcript profiles are presented for a panel of previously M1/M2-associated transcripts. The LPS/IFN $\gamma$  challenged M0 groups are representative of M1. Significance levels: \* $P < 0.05$ , \*\* $P < 0.01$ , \*\*\* $P < 0.001$ .

expression on GM-CSF pre-differentiated macrophages (Fig. 4B). CD274 was elevated following M1 activation, but somewhat surprisingly highest with M-CSF pre-differentiation (Fig. 4C). These results indicate that while M1 and M2 activation states can be induced irrespective of pre-differentiation signals, the balance of pre-differentiation growth factors will ultimately define the final level of macrophage activation phenotype.

We also screened the mRNA expression of a selected panel of polarized M1 and M2 cytokines, chemokines and surface receptors following initial M-CSF and GM-CSF pre-differentiation and subsequent polarization (Fig. 4D). The left-hand panel of the heatmap depicts primary polarization with IL-4/IL-10/TGF- $\beta$ , and the right-hand panel the subsequent secondary stimulation with LPS/IFN $\gamma$ . The genes cluster into distinct groups, M1 markers located at the top and M2 markers at the bottom, respectively.

Compared to the M0 state, both M-CSF and GM-CSF M2-polarized macrophages expressed M2 gene transcripts, but interestingly the profiles differed. Typical M2 markers CD273, CIITA, SRB1, CD206, IL1R2 and HMOX1 were best induced with M-CSF pre-differentiation (left panel). Following challenge, IL1, IL23 and PTGS2 (COX-2) dominated in GM-CSF pre-differentiated cells, whereas CXCL10, CXCL11, CCR7, IL6, IL12a and TNF $\alpha$  were higher in M-CSF M1 cells. Taken together, these indicate alternative inflammatory responses, which importantly are repressed in M2-preconditioned cells. Furthermore, M-CSF M2 pre-polarized cells expressed higher levels of M2-associated IL10, CCL14 and CD206, which were retained following secondary M1 stimulation (Fig 4D, lower part).

In conclusion, these data demonstrated that the most robust IL-4/IL-10/TGF- $\beta$  M2 activation phenotype is induced following initial pre-differentiation with M-CSF.

## Discussion

We conducted the current study to address how best to induce *in vitro* an immunosuppressive human macrophage phenotype. We compared and contrasted selected activation protocols that we have previously tested with mouse cells and concluded that a combination of IL-4/IL-10/TGF $\beta$  yielded a phenotype characterized by: (1) expression of M2-associated surface markers and gene transcripts (e.g. CD206), (2) immunosuppressive cytokines (e.g. IL-10), (3) ability to retain the phenotype on secondary pro-inflammatory activation and (4) ability to suppress autoreactive pathogenic T-lymphocyte proliferation. Moreover, our data clearly indicate that there are both similarities and differences in final monocyte activation states depending on whether M-CSF or GM-CSF is used during pre-differentiation. Following specific subsequent activation, the most potent M2 phenotype was attained in M-CSF pre-differentiated monocytes, while the most potent M1

phenotype was attained in GM-CSF pre-differentiated monocytes, similar to what we have determined with murine bone marrow macrophages. Our conclusion is that we can generate a comparable IL-4/IL-10/TGF- $\beta$ -polarized immunosuppressive macrophage phenotype with respect to both immunological phenotyping and functional activity in both human and murine systems.

Monocytes represent circulating cells that in steady state are exposed to M-CSF in the blood. Given appropriate chemotactic signals, they will infiltrate into tissues, transforming into pro-inflammatory tissue macrophages under the influence of GM-CSF. The tissue-destructive properties of pro-inflammatory M1 macrophages is evident in many settings of chronic inflammatory autoimmune diseases, yet immunosuppressive M2 properties are equally apparent in settings of tumours [27] and helminth infections [28]. While significant large numbers of M1 cells are typical of foci of tissue destruction in the former setting, more modest numbers are associated with the latter function. In a given pro-inflammatory focus, the relative balance of M1 cells driving disease and the M2 cells attempting to naturally regulate the immune response will determine the final outcome of either chronic inflammation or healing. Manipulation of this M1/M2 stochastic balance through adoptive transfer of *in vitro* pre-activated macrophages thus represents a relatively logical immunomodulatory strategy and a growing body of researchers explore this possibility [29]. How long the transferred cells remain potent in their immunosuppressive functional state requires further investigation. Translation into the clinic has already been attempted, with the first human trials using immunosuppressive macrophages being conducted in a setting of spinal cord injury [30]. While the therapeutic effects in animal models of this pathology have been promising, translation into the human setting has been less efficacious.

An important aspect will be stability of the induced anti-inflammatory phenotype, which must not switch on entering a pro-inflammatory focus. Macrophage activation plasticity has been investigated previously, with a first indication of the capability of macrophages to switch phenotype *in vitro* being reported [31]. However, another study conversely concluded that the nature of the first of two different consecutively applied stimulants decides the final activation state of the cells [32]. Our M2 induction protocol using a combination of IL-4/IL-10/TGF- $\beta$  yielded a phenotype that buffered subsequent pro-inflammatory secondary stimulation. Compared to the strong and persistent challenging stimuli we used *in vitro*, how M2-polarized cells behave in *in vivo* situations remains to be explored.

In clinical settings of pro-inflammatory diseases such as secondary progressive MS or advanced Type 1 diabetes, myeloid cell therapy using anti-inflammatory macrophages is an attractive concept. As the source of macrophages is from the patient themselves there should be ample



possibilities for repeated treatments, and this would compensate for the potential short-term immunosuppressive action the transferred cells might have *in vivo*. While a heightened pro-inflammatory monocyte activation has typically been reported from individuals with autoimmune diseases [33–36], our data demonstrate that given an appropriately efficient polarization protocol an effective anti-inflammatory activation state can still be induced in cells recovered from individuals with disease. We consider that the use of stringently optimized polarization protocols to ensure maximal retention of functional immunosuppressive capacity post-transfer is a key consideration for macrophage therapy in pro-inflammatory diseases.

## Acknowledgment

This work was supported by grants from the Swedish Medical Research Council, Barndiabetesfonden, Diabetes Fonden and Karolinska Institutet.

## Conflict of interest

The authors declare no financial or commercial conflict of interest.

## References

- Gordon S. Innate immune functions of macrophages in different tissue environments. *J Innate Immun* 2012;4:409–10.
- Murray PJ, Wynn TA. Protective and pathogenic functions of macrophage subsets. *Nat Rev Immunol* 2011;11:723–37.
- Geissmann F, Gordon S, Hume DA, Mowat AM, Randolph GJ. Unravelling mononuclear phagocyte heterogeneity. *Nat Rev Immunol* 2010;10:453–60.
- Varol C, Yona S, Jung S. Origins and tissue-context-dependent fates of blood monocytes. *Immunol Cell Biol* 2009;87:30–8.
- Swirski FK, Nahrendorf M, Etzrodt M *et al.* Identification of splenic reservoir monocytes and their deployment to inflammatory sites. *Science* 2009;325:612–6.
- Ginhoux F, Greter M, Leboeuf M *et al.* Fate mapping analysis reveals that adult microglia derive from primitive macrophages. *Science* 2010;330:841–5.
- Schulz C, Gomez PE, Chorro L *et al.* A lineage of myeloid cells independent of Myb and hematopoietic stem cells. *Science* 2012;336:86–90.
- Ajami B, Bennett JL, Krieger C, Tetzlaff W, Rossi FM. Local self-renewal can sustain CNS microglia maintenance and function throughout adult life. *Nat Neurosci* 2007;10:1538–43.
- Hashimoto D, Chow A, Noizat C *et al.* Tissue-resident macrophages self-maintain locally throughout adult life with minimal contribution from circulating monocytes. *Immunity* 2013;38:792–804.
- Liddiard K, Rosas M, Davies LC, Jones SA, Taylor PR. Macrophage heterogeneity and acute inflammation. *Eur J Immunol* 2011;41:2503–8.
- Mosser DM, Edwards JP. Exploring the full spectrum of macrophage activation. *Nat Rev Immunol* 2008;8:958–69.
- Andersson A, Kokkola R, Wefer J, Erlandsson-Harris H, Harris RA. Differential macrophage expression of IL-12 and IL-23 upon innate immune activation defines rat autoimmune susceptibility. *J Leukoc Biol* 2004;76:1118–24.
- Maree AF, Komba M, Finegood DT, Edelstein-Keshet L. A quantitative comparison of rates of phagocytosis and digestion of apoptotic cells by macrophages from normal (BALB/c) and diabetes-prone (NOD) mice. *J Appl Physiol* 2008;104:157–69.
- Fleetwood AJ, Dinh H, Cook AD, Hertzog PJ, Hamilton JA. GM-CSF- and M-CSF-dependent macrophage phenotypes display differential dependence on type I interferon signaling. *J Leukoc Biol* 2009;86:411–21.
- Lenzo JC, Turner AL, Cook AD *et al.* Control of macrophage lineage populations by CSF-1 receptor and GM-CSF in homeostasis and inflammation. *Immunol Cell Biol* 2012;90:429–40.
- Sierra-Filardi E, Vega MA, Sanchez-Mateos P, Corbi AL, Puig-Kroger A. Heme Oxygenase-1 expression in M-CSF-polarized M2 macrophages contributes to LPS-induced IL-10 release. *Immunobiology* 2010;215:788–95.
- Hamilton JA. Colony-stimulating factors in inflammation and autoimmunity. *Nat Rev Immunol* 2008;8:533–44.
- Jaguin M, Houlbert N, Fardel O, Lecreur V. Polarization profiles of human M-CSF-generated macrophages and comparison of M1-markers in classically activated macrophages from GM-CSF and M-CSF origin. *Cell Immunol* 2013;281:51–61.
- Ingersoll MA, Spanbroek R, Lottaz C *et al.* Comparison of gene expression profiles between human and mouse monocyte subsets. *Blood* 2010;115:e10–9.
- Wong KL, Tai JJ, Wong WC *et al.* Gene expression profiling reveals the defining features of the classical, intermediate, and nonclassical human monocyte subsets. *Blood* 2011;118:e16–31.
- Wong KL, Yeap WH, Tai JJ, Ong SM, Dang TM, Wong SC. The three human monocyte subsets: implications for health and disease. *Immunol Res* 2012;53:41–57.
- Frankenberger M, Hofer TP, Maree A *et al.* Transcript profiling of CD16-positive monocytes reveals a unique molecular fingerprint. *Eur J Immunol* 2012;42:957–74.
- Weber MS, Prod'homme T, Youssef S *et al.* Type II monocytes modulate T cell-mediated central nervous system autoimmune disease. *Nat Med* 2007;13:935–43.
- Iacobaeus E, Amoudruz P, Strom M *et al.* The expression of VEGF-A is down regulated in peripheral blood mononuclear cells of patients with secondary progressive multiple sclerosis. *PLoS One* 2011;6:e19138.
- Parsa R, Andresen P, Gillett A *et al.* Adoptive transfer of immunomodulatory M2 macrophages prevents type 1 diabetes in NOD mice. *Diabetes* 2012;61:2881–92.
- Wallberg M, Harris RA. Co-infection with *Trypanosoma brucei* prevents experimental autoimmune encephalomyelitis in DBA/1 mice through induction of suppressor APCs. *Int Immunol* 2005;17:721–8.
- Traves PG, Luque A, Hortelano S. Macrophages, inflammation, and tumor suppressors: ARF, a new player in the game. *Mediators Inflamm* 2012;2012:568783.
- Semrani RT. The interaction between filarial parasites and human monocyte/macrophage populations. *Adv Exp Med Biol* 2013;785:49–56.
- Shechter R, Schwartz M. Harnessing monocyte-derived macrophages to control central nervous system pathologies: no longer 'if but 'how'. *J Pathol* 2013;229:332–46.
- Lammertse DP, Jones LA, Charlifue SB *et al.* Autologous incubated macrophage therapy in acute, complete spinal cord injury: results of the phase 2 randomized controlled multicenter trial. *Spinal Cord* 2012;50:661–71.
- Gratchev A, Kzhyshkowska J, Kothe K *et al.* Mphi1 and Mphi2 can be re-polarized by Th2 or Th1 cytokines, respectively, and respond to exogenous danger signals. *Immunobiology* 2006;211:473–86.
- Erwig LP, Kluth DC, Walsh GM, Rees AJ. Initial cytokine exposure determines function of macrophages and renders them unresponsive to other cytokines. *J Immunol* 1998;161:1983–8.

- 
- 33 Ciccia F, Alessandro R, Rodolico V *et al.* IL-34 is overexpressed in the inflamed salivary glands of patients with Sjogren's syndrome and is associated with the local expansion of pro-inflammatory CD14(bright) CD16+ monocytes. *Rheumatology (Oxford)* 2013;52:1009–17.
- 34 Kouwenhoven M, Teleshova N, Ozenci V, Press R, Link H. Monocytes in multiple sclerosis: phenotype and cytokine profile. *J Neuroimmunol* 2001;112:197–205.
- 35 Li Y, Lee PY, Reeves WH. Monocyte and macrophage abnormalities in systemic lupus erythematosus. *Arch Immunol Ther Exp (Warsz)* 2010;58:355–64.
- 36 Menke J, Rabacal WA, Byrne KT *et al.* Circulating CSF-1 promotes monocyte and macrophage phenotypes that enhance lupus nephritis. *J Am Soc Nephrol* 2009;20:2581–92.