

Diversity, distribution and biology of Romanian flat-footed flies (Diptera, Opetiidae and Platypezidae) with taxonomic notes on *Callomyia saibhira* Chandler

Michal Tkoč^{1,2}, Jindřich Roháček³

1 Department of Entomology, National Museum, Cirkusová 1740, CZ-193 00 Praha 9 – Horní Počernice, Czech Republic **2** Department of Zoology, Faculty of Science, Charles University in Prague, Viničná 7, CZ-128 43 Praha 2, Czech Republic **3** Silesian Museum, Nádražní okruh 31, CZ-746 01 Opava, Czech Republic

Corresponding author: Michal Tkoč (michaltkoc@gmail.com)

Academic editor: T. Dikow | Received 1 August 2014 | Accepted 21 October 2014 | Published 2 December 2014

<http://zoobank.org/6C1654D2-6923-4754-8679-3AFE152F8E30>

Citation: Tkoč M, Roháček J (2014) Diversity, distribution and biology of Romanian flat-footed flies (Diptera, Opetiidae and Platypezidae) with taxonomic notes on *Callomyia saibhira* Chandler. ZooKeys 459: 95–118. doi: 10.3897/zookeys.459.8376

Abstract

Altogether 18 species of the families Opetiidae and Platypezidae are reported from Romania, based on newly studied material and previously published records. The following three species are recorded from Romania for the first time: *Agathomyia vernalis* Shatalkin, 1981, *Callomyia saibhira* Chandler, 1976, and *Lindneromyia hungarica* Chandler, 2001. The presented differential diagnosis and a detailed redescription of body and genitalia of the male of *Callomyia saibhira* are based on one specimen which is the first male found in Europe. Information about distribution and biology of all 18 Romanian species is provided as well as photographs of selected important species. Finally, a new checklist of all Romanian species is given.

Keywords

Diptera, Opetiidae, Platypezidae, *Callomyia saibhira* redescription, Palearctic Region, Romania, distribution, biodiversity, new records, biology

Introduction

The Opetiidae and Platypezidae are basal cyclorrhaphous families of Diptera, belonging to the superfamily Platypezoidea. The European species are small brachycerous flies, ranging from 1.4 to 6.0 mm in wing length. Their coloration is often black

(males) or composed of black, orange and grey (females), and some species have silvery grey reflective patterns. The males have larger heads with holoptic eyes, while the female eyes are dichoptic. The larvae may be flat or cylindrical. All known larvae are mycophagous and feed by burrowing in the tissue of fungus fruiting bodies, at the surface of the gills of gill fungi, or on fungal mycelia under bark of dead trees; one species, *Agathomyia wankowiczii* (Schnabl, 1884), is gall-forming on sporocarps of a polypore. Adults of European species may be observed running rapidly on broad leaves in forested habitats; females may be observed ovipositing on host fungi.

These two families of flat-footed flies include 44 species in 13 genera in Europe (Chandler 2001, 2004). Current literature (Chandler 2001, 2004) lists only six species from Romania. However, during the preparation of this paper we have noticed that some localities of Platypezidae given by Thalhammer (1899) and Szilády (1941) are in fact in the present territory of Romania. Unfortunately, the material of Thalhammer (1899) and Szilády (1941) was destroyed by fire in 1956 (Papp 2001), but we consider their determinations to be correct and thus their records are included in the present paper. The monograph of the European species by Chandler (2001) summarizes all known (up to year 2000) data on adult and larval morphology, biology, distribution, systematics, including keys to the species. The nomenclature and classification used here therefore follow Chandler (2001).

Material and methods

Specimens were examined with an Olympus SZX10 binocular microscope. Photographs were taken by Canon 600D and/or 60D with MPE-65 macro lens and in some cases combined from multiple layers using Helicon Focus Pro 5.2. Drawings and photographs were edited in CorelDRAW 12 and Corel PHOTO-PAINT 12 graphic software. Morphological terminology follows Cumming and Wood (2009) and Chandler (2001), terminology of male genitalia follows Chandler (2001), Chandler and Shatalkin (1998), and is supplemented in parentheses by terminology adopted from Cumming and Wood (2009). The material examined is now deposited in the Silesian Museum, Opava, Czech Republic (SMOC, all specimens collected by J. Roháček) and the National Museum, Praha, Czech Republic (NMPC, remaining specimens).

Distributional data follows Chandler (2001, 2004) and are supplemented by data of Thalhammer (1899), Szilády (1941), Carles-Tolrá and Báez (2002), Ševčík (2004), Pakalniškis et al. (2006), Schacht (2006), Ståhls and Kahanpää (2006), Tkoč and Vaňhara (2006, 2008), Roháček and Ševčík (2007, 2011), Vaňhara (2009), Andrade and Almeida (2010), Ebejer and Andrade (2010), Tkoč (2011), Tkoč et al. (2012), Claussen (2013) and Ståhls (2014).

The following abbreviations are used in the text: I–XII – January to December, BMNH – The Natural History Museum, London, United Kingdom, JR – Jindřich Roháček, ER – European Russia, FE – Far East of Russia, MT – Michal Tkoč, NMPC – National Museum, Praha, Czech Republic, SMNS – Staatliches Museum

für Naturkunde, Stuttgart, Germany, SMOC – Silesian Museum, Opava, Czech Republic. The species with asterisk (*) in front of their names represent new records for Romania. The translations of original localities from Romanian are in square brackets [], together with names of the respective county and historical region.

Results

Family Opetiidae

Opetia nigra Meigen, 1830

Figure 1

Published records. Orlát [Orlat, Sibiu, Transilvania] (Thalhammer 1899); Mehádia [Mehadia, Caraş-Severin, Banat] (Szilády 1941).

Material examined. 1 ♂, 1. vi. 2008, Banat, Sfânta Elena, 4km NE, Kulhavá skála, Vranovec cave (Figure 17), 300 m a.s.l., 44°42'12"N, 21°43'52"E, sweeping vegetation along brook, JR leg.

Distribution. Palaearctic species. Recorded in Austria, Belgium, the Czech Republic, Denmark, Finland, France, Germany, Great Britain, Hungary, Ireland, Italy, Luxembourg, the Netherlands, Poland, Portugal, Romania, Slovakia, Spain, Sweden, Switzerland and Russia (ER).

Biology. The adults run on broad leaves in wooded biotopes, where they sometimes form swarms. Its larvae are unknown. The adults were reared from very rotten beech wood and leaf litter (Speight et al. 1990, Chandler 2001) but the exact development substrate of the larvae remains unknown and thus these records need confirmation. The males can sometimes be caught by light trap (Chandler 2001), while the females can be collected by pitfall traps (Vaňhara 1986). The adults (mostly males) can be collected by sweeping undergrowth of various forests, sweeping on *Atropa belladonna* leaves proved to be particularly productive (pers. obs.). The species is bivoltine, adult flight period in central Europe is V–VI and VIII–X.

Family Platypezidae

Subfamily Callomyiinae

Agathomyia antennata (Zetterstedt, 1819)

Figure 2

Published records. Mehádia [Mehadia, Caraş-Severin, Banat]; Szászka [Szászka, Caraş-Severin, Banat] (Szilády 1941).

Material examined. 1 ♀, 31. v. 2008, Banat, Sfânta Elena, 1 km E, Alibeg brook valley (Figure 18), 230 m a.s.l., 44°40'37"N, 21°43'32"E, sweeping undergrowth of



Figure 1. *Opetia nigra* Meigen, 1830, male habitus. Photo by J. Roháček.



Figure 2. *Agathomyia antennata* (Zetterstedt, 1819), female habitus. Photo by D. Gavryushin.

deciduous forest, JR leg.; 3 ♀♀, 1. vi. 2008, Banat, Sfânta Elena, 4 km NE, Kulhavá skála, Vranovec cave (Figure 17), 300 m a.s.l., 44°42'12"N, 21°43'52"E, sweeping vegetation along brook, JR leg.; 1 ♀, 4. vi. 2008, Banat, Berzasca, 2 km NE, Berzasca

river valley, 85 m a.s.l., 44°39'09"N, 21°57'47"E, sweeping riverside vegetation, JR leg.; 1 ♀, 19. v. 2011, Alba, Alba Iulia, 1 km E, 380 m a.s.l., 46°04'18"N, 23°32'02"E, sweeping on *Quercus* sp., MT leg.

Distribution. Palaearctic species reaching to Oriental region (Taiwan). Recorded in Austria, Belgium, Croatia, the Czech Republic, Denmark, Finland, France, Germany, Great Britain, Hungary, Italy, Lithuania, the Netherlands, Norway, Poland, Portugal, Romania, Slovakia, Spain, Sweden, Switzerland and Russia (ER, FE).

Biology. Most common species of the genus in the Palaearctic Region. The adults of both sexes are often found running on *Petasites* sp. leaves (pers. obs.). Larvae develop in *Bjerkandera adusta* (Ševčík 2010). Adult flight period is in IV–IX.

Agathomyia collini Verrall, 1901

Published records. Mehadia, Karaş-Severin [Caraş-Severin, Banat], 3.vii.1912, Oldenberg coll. (SMNS) (Czerny 1930, Chandler 2001).

Distribution. Palaearctic species. Recorded in the Czech Republic, France, Great Britain, Hungary, Romania, Slovakia, Spain, Russia (ER, FE) and Georgia (North Ossetia) in the Caucasus (Shatalkin 1992).

Biology. Larvae are unknown; Chandler (2001) mentioned possible association with *Phellinus pomaceus* growing on apple or plum trees based on information provided by Morley (1918). However, this host association needs confirmation. The adults can be swept on forest undergrowth formed mainly by *Lunaria rediviva* (Roháček and Ševčík 2011; pers. obs.). Adults occur in IV–IX.

Agathomyia falleni (Zetterstedt, 1838)

Figure 3

Published records. Szászka [Szászka, Banat, Caraş-Severin] (Szilády 1941).

Distribution. Palaearctic species. Recorded in Austria, Croatia, the Czech Republic, Denmark, Finland, France, Germany, Great Britain, Hungary, Lithuania, the Netherlands, Romania, Poland, Slovakia, Sweden, Switzerland and Russia (ER).

Biology. Host fungus is *Bjerkandera adusta* (see Chandler 2001). The females can be observed during oviposition on sporocarps of the host fungi on tree stumps (Figure 3). It is a species with autumnal activity; adult flight period is in IX–XI.

Agathomyia setipes Oldenberg, 1916

Figure 4

Published records. 1 ♂, Czerna Ufers [=Cerna river banks], Herkulesbad [Băile Herculanene, Caraş-Severin, Banat], 13.vii.1912 (Oldenberg 1916, Czerny 1930).



Figure 3. *Agathomyia falleni* (Zetterstedt, 1838), female ovipositing on undetermined yellow slime mold (Mycetozoa) on stump overgrown by *Bjerkandera adusta*. Photo by M. Tkoč.



Figure 4. *Agathomyia setipes* Oldenberg, 1916, female showing abdominal pattern. Photo by J. Roháček.

Distribution. Palearctic species. Recorded in Croatia, the Czech Republic, Slovakia, Hungary, Romania and Russia (FE).

Biology. Unknown. Adults are usually swept from vegetation along brooks in forests (Roháček and Ševčík 2009). Very rare species known from only a few specimens from the whole of Europe; adult flight period is in VII–X.

****Agathomyia vernalis* Shatalkin, 1981**

Figure 5

Material examined. 1 ♀, 19. v. 2011, Alba, Alba Iulia, 1 km E, 380 m a.s.l., 46°04'18"N, 23°32'02"E, sweeping on *Fagus sylvatica*, MT leg.

Distribution. Palearctic species. Recorded in the Czech Republic, Finland, Germany, Slovakia, Switzerland and Russia (ER). **New record for Romania.**

Biology. Very rare species with early flight period. The individuals are collected only in IV and V and were almost exclusively females. Larval biology and host fungus are unknown. Tkoč and Barták (2013) recorded this species in numbers from a pyramidal (emergence) trap baited with dead wood.

***Agathomyia viduella* (Zetterstedt, 1838)**

Figure 6

Published records. Mehădia [Mehadia, Caraş-Severin, Banat] (Szilády 1941).

Material examined. 1 ♀, 1. vi. 2008, Banat, Sfânta Elena, 4 km NE, Kulhá vá skála, Vranovec cave (Figure 17), 300 m a.s.l., 44°42'12"N, 21°43'52"E, sweeping vegetation along brook, JR leg.

Distribution. Palearctic species. Recorded in the Czech Republic, Denmark, Finland, France, Germany, Great Britain, Hungary, Ireland, Lithuania, Montenegro, the Netherlands, Norway, Poland, Romania, Slovakia, Sweden, Switzerland and Russia (ER, FE).

Biology. Uncommon species with adults occurring in undergrowth and along brooks in humid deciduous and mixed forests (Roháček and Ševčík 2009) and are often observed running on *Petasites* sp. leaves together with *A. antennata* (pers. obs.). The main flight period of adults ranges from V to VII. Host fungus is unknown.

***Callomyia amoena* Meigen, 1824**

Figure 7

Published records. Mehădia [Mehadia, Caraş-Severin, Banat]; Orsova [Orşova, Mehedinţi, Banat] (Thalhammer 1899); 1 ♂, 1 ♀, Retezatului Mts, near Hobita,



Figure 5. *Agathomyia vernalis* Shatalkin, 1981, female habitus in lateral view. Photo by M. Tkoč.



Figure 6. *Agathomyia viduella* (Zetterstedt, 1838), female habitus. Note the glossy frons as the main diagnostic character of females of this species. Photo by M. Tkoč.



Figure 7. *Callomyia amoena* Meigen, 1824, male habitus. Photo by D. Gavryushin.

Calana [Hobița, Hunedoara], 29. vi. 1969, in mature pine forest, B.H. Cogan and R.I. Vane-Wright leg. (BMNH) (Chandler 2001, in litt.).

Material examined. 1 ♀, 1 vi. 2008, Banat, Sfânta Elena, 4 km NE, Kulhavá skála, Vranovec cave (Figure 17), 300 m a.s.l., 44°42'12"N, 21°43'52"E, sweeping vegetation along brook, JR leg.; 1 ♂ 1 ♀, 2. vi. 2008, Banat, Radimna near Pojejena, 140 m a.s.l., 44°49'17"N, 21°33'31"E, sweeping undergrowth of alder forest, JR leg.; 1 ♂, 19. v. 2011, Alba, Alba Iulia, 1 km E, 380 m a.s.l., 46°04'18"N, 23°32'02"E, sweeping on *Acer campestre*, MT leg.

Distribution. Palaearctic species. Recorded in Austria, Belgium, the Czech Republic, Denmark, Finland, France, Germany, Great Britain, Hungary, Ireland, Italy, Lithuania, the Netherlands, Norway, Poland, Slovakia, Spain, Sweden, Switzerland, Romania and Russia (ER).

Biology. Common species, the larvae live on mycelia under bark of fallen trunks of various trees. A record from mycelia on bark on the underside of aspen trunks lying on the ground was mentioned by Krivosheina (2008). Flight period of adults ranges from V to X.

Callomyia elegans Meigen, 1804

Figure 8

Published records. Mehádia [Mehadia, Caraș-Severin, Banat] (Thalhammer 1899).



Figure 8. *Callomyia elegans* Meigen, 1804, female habitus. Photo by D. Gavryushin.

Distribution. Palearctic species. Recorded in Andorra, Austria, the Czech Republic, Finland, France, Germany, Great Britain, Hungary, Ireland, Italy, Lithuania, the Netherlands, Norway, Poland, Slovakia, Sweden, Switzerland, Romania and Russia (ER).

Biology. Unknown, the larvae probably live on mycelia under bark of fallen trunks of various trees (similarly to other species of *Callomyia*, see Krivosheina 2008). Rare species with no recent records from Central and South Europe, population densities of this species are very low or undetectable. Adult flight period is in IV–VIII.

****Callomyia saibhira* Chandler, 1976**

Figs 9–10

Material examined. 1 ♂, 1. vi. 2008, Banat, Sfânta Elena, 4 km NE, Kulhavá skála, Vranovec cave (Figure 17), 300 m a.s.l., 44°42'12"N, 21°43'52"E, sweeping vegetation along brook, JR leg.

Differential diagnosis. Male of *C. saibhira* differs from *C. amoena* and *C. elegans* by having darker halteres that are not orange (brown with knob black). *C. speciosa* have longer arista and shorter first flagellomere and upper part of pleura is not so silvery grey dusted as in *C. saibhira*. From its most similar species, *C. dives* Zetterstedt, 1838, it differs by a clear wing membrane, brown palpus and different genitalia, basal lobe of gonopod is shorter (Figure 10). Females have unique abdominal coloration: tergites 1–4 (T1–4) are orange yellow with narrow brown hind margins on T2–4, only T5 is black, T6 and terminal segments are silvery grey dusted.



Figure 9. *Callomyia saibhira* Chandler, 1976, male from Romania: body in lateral view. Photo by M. Tkoč.

Redescription. Male. Body length 4.1 mm. Wing length 3.8 mm.

Head black with silvery grey dusting. Antenna dark brown, scapus with dorsal seta reaching to tip of pedicel, pedicel with one strong dorsal seta reaching to the middle of first flagellomere, both sides of pedicel with 3 short setae, 1 short seta on ventral position. First flagellomere conical, twice as long as pedicel. Second and third flagellomere long. Arista half of antennal length. Two pairs of small frontal setae. Ocellar tubercle dull brown, with one pair of ocellar setae and one pair of small postocellar setae. Postocular setae long, their apices visible in anterior view. Face and parafacial bare, silvery grey dusted. Gena, occiput and postgena with long black setae. Occiput black, silvery grey dusted. Palpi brown with short black setae, proboscis brown with pale pubescence.

Thorax velvet black with silvery grey dusted areas. Two very inconspicuous median dorsal grey stripes between dorsocentral and acrostichal setae ending in anterior two thirds of scutum. Posterior sides of scutum silvery shining. Pleural sides of thorax without setae, silvery grey coloured. All thoracic setae black. Uniserial row of acrostichal setae, two rows of about 10 dorsocentral setae. Humeral callus with top brownish, with 2 humeral setae; 4 small posthumeral setae. One postalar seta. Notopleural group composed of 6 setae: 1st long, 2nd–4th short, 5th–6th long. Notopleural area silvery grey dusted. Two long presutural and 4–5 small postsutural setae. Scutellum black, with 2 prominent scutellar setae on each side. Haltere brownish with knob black.

Wing hyaline with brown to dark brown veins. Subcostal cell (sc) yellow tinted and with microtrichia. Wing surface not uniformly covered with microtrichia, microtrichia present on anal lobe, posterior and distal part of wing. First longitudinal vein (R_1)

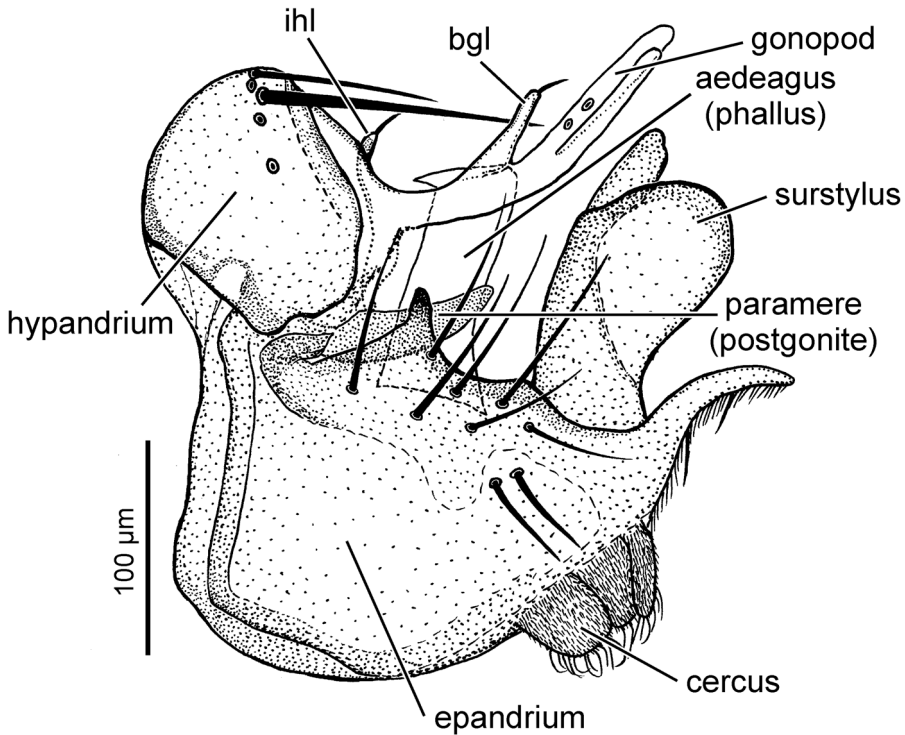


Figure 10. *Callomyia saibhira* Chandler, 1976, male genitalia of specimen from Romania: right lateral view. (bgl – basal gonopodal lobe, ihl – inner hypandrial lobe).

bearing 9–10 spines. Anterior (r-m) and posterior (dm-cu) crossveins present. Costal cell (c) equal to sc in length. Posterior crossvein (dm-cu) twice as long as distal part of the fifth longitudinal vein (CuA_1). Anal cell (cup) elongated, its length about three times portion of anal vein ($A_1 + CuA_2$) beyond it.

Legs slender, brown, slightly silvery shiny. All coxae silvery dusted with black setae, yellow distally. Fore femur with longer fine ventral setae distally. Fore femur with 1 ox-horn seta. Apices of femora and basal parts of tibiae (=“knees”) yellow. Fore tibia with 1 anteroventral spur. Fore tarsomeres I–II yellow. Mid tibia bearing short dorsal seta above middle (anterodorsal seta absent) and two long ventral apical spurs. Hind femur of the same width as hind tibia. Hind tarsomere I with ventral seta above middle.

Abdomen black with silver-grey coloured markings. Setae on abdomen fine and black. Tergites 1 and 2 (T1+2) more setulose than the others, T3+T4 sparsely setulose. T1 black, its anterior half shiny silvery grey in lateral view. T2 black with silvery grey marking on posteroventral area. In lateral view this marking occupies posterior third of T2. T3 black, with similar (but smaller) marking, mainly on ventral part. T4 black, with silvery grey marking on posteroventral area occupying posterior two thirds in lateral view. T5 black. T6 black with posterior border grey. T7 small, entirely grey. Sternite 8 also grey, without setae.

Genitalia (Figure 10) with epandrium grey, cercus brownish, surstylus and hypandrium shiny amber-brown. Paramere (postgonite) slightly curved dorsally with base narrower, its broader apical part slightly tapered towards the rounded apex. Aedeagus (phallus) broad in lateral view, its dorsal apex with sharp tooth anteriorly, bluntly rounded posteriorly. Hypandrium with small inner hypandrial lobe (ihl) sub-basal to gonopod. Gonopod (hypandrial lobe) trifold, with shorter basal gonopodal lobe (bgl) and longer terminal part deeply bifid forming two slender apical lobes. Surstylus with basal part narrower than its apical rounded part, the latter with a digitiform dorsal process. Terminal lobe of epandrium gradually tapered and slightly curved, covered by setulae and with 2 longer setae. Ventral part of epandrium with 5 prominent setae two smaller setae and two additional smaller setae positioned more ventrally. Cercus covered by microtrichia and with short curly setulae on apex.

Female. Not studied, for description see Chandler (1976, 2001).

Distribution. Palaearctic species. Hitherto recorded only from Bulgaria (Chandler 1976) and the Far East of Russia (Shatalkin 1985). **New record for Romania.**

Biology. Unknown. The larvae of other European *Callomyia* species develop on mycelia under bark of various trees (see above under *C. amoena*). The adult male examined was swept from vegetation close to a cave along a small brook (Figure 17). The known flight period in Europe is in VI.

Comments. This is the second specimen and first male of the species from Europe. Other known material (♂♂ and ♀♀) was collected in the Far East of Russia, Amur region (Shatalkin 1985). It is similar to *Callomyia dives* in the morphology of males, but the silver coloration on the thorax and abdomen is less developed. Also, the basal lobe of the gonopod (bgl) is shorter (Figure 10). This species seems to have an inland distribution, whereas *C. dives* is found mostly on islands or close to coastal zones of Europe.

Chandler (2001) figured genitalia of an Amur specimen collected by Shatalkin. However, the genitalia of our specimen do not entirely fit into the description and figure of Chandler (2001). The main differences appear to be as follows (see Figure 10): presence of inner hypandrial lobe (ihl) positioned sub-basally to gonopod (this character is present in more *Callomyia* species, but usually omitted in the descriptions and figures in the literature); paramere (postgonite) is wider in lateral view, curved dorsally, with narrow basal part; morphology and position of basal gonopodal lobe (bgl) is very similar to that of Chandler (2001), but the bifurcation of terminal part of gonopod is more profound; the apical part of surstylus is less rounded and its basal part is only slightly narrower than apical part; cerci have shorter curly setulae.

Callomyia speciosa Meigen, 1824

Figure 11

Published records. 1 ♂, Retezatului Mts, near Hobita, Calana [Hobița, Hunedoara], 29. vi. 1969, in mature pine forest, B.H. Cogan and R.I. Vane-Wright leg. (BMNH) (Chandler 2001, in litt.).



Figure 11. *Callomyia speciosa* Meigen, 1824, female habitus. Photo by D. Gavryushin.

Material examined. 1 ♀, 31. v. 2011, Banat, Sfânta Elena, 1 km E, Alibeg brook valley (Figure 18), 230 m a.s.l., 44°40'37"N, 21°43'32"E, sweeping undergrowth of deciduous forest, JR leg.; 1 ♂, 1 vi. 2008, Banat, Sfânta Elena, 4 km NE, Kulhavá skála, Vranovec cave (Figure 17), 300 m a.s.l., 44°42'12"N, 21°43'52"E, sweeping vegetation along brook, JR leg.; 1 ♀, 3. vi. 2008, Banat, Sfânta Elena, 1 km E, Alibeg brook valley (Figure 18), 230 m a.s.l., 44°40'37"N, 21°43'32"E, sweeping vegetation along brook, JR leg.

Distribution. Palaearctic species. Recorded in Andorra, Austria, Belgium, the Czech Republic, Denmark, Finland, France, Germany, Great Britain, Greece, Hungary, Italy, Israel, Lithuania, the Netherlands, Norway, Poland, Portugal, Romania, Slovakia, Slovenia, Spain, Sweden, Switzerland, Turkey, Russia (ER) and Caucasus.

Biology. Less common than *C. amoena* but widely distributed throughout Europe. The larvae also live on mycelia under bark of various trees (reared from mycelium on surface of a fallen hazel trunk by Krivosheina (2008)). Adults fly in V–IX.

Subfamily Platypezinae

Seri obscuripennis (Oldenberg, 1916)

Figure 12

Published records. 1 ♂, Herkulesbad [Băile Herculane, Caraș-Severin, Banat], 6.vi.1904, Kertész lgt. (Oldenberg 1916, Czerny 1930); Mehádía [Mehadia, Caraș-Severin, Banat] (Szilády 1941).



Figure 12. *Seri obscuripennis* (Oldenberg, 1916), male habitus. Photo by D. Gavryushin.

Distribution. Palearctic species. Recorded in Austria, the Czech Republic, Finland, Germany, Great Britain, Hungary, the Netherlands, Norway, Poland, Romania, Slovakia, Sweden, Switzerland and Russia (ER, FE).

Biology. Rather rare in Europe but more common in the Far East of Russia (Shatalkin 1985, Chandler 2001). Its larvae develop in several species of *Polyporus* (Ševčík 2010). Adults occur in VI–VII and IX.

***Bolopus furcatus* (Fallén, 1826)**

Published records. Mehădia [Mehadia, Caraș-Severin] (Szilády 1941).

Distribution. Palearctic species. Recorded in Austria, Belgium, the Czech Republic, Denmark, Finland, Germany, Great Britain, Hungary, Ireland, Poland, Romania, Slovakia, Sweden, Switzerland, the Netherlands, Russia (ER).

Biology. Immature stages develop in *Polyporus squamosus* (Chandler 2001, Ševčík 2010). Adult flight period is from IV to IX.

***Polyporivora ornata* (Meigen, 1838)**

Figure 13

Published records. Szászka [Szászka, Caraș-Severin, Banat] (Szilády 1941).



Figure 13. *Polyporivora ornata* (Meigen, 1838), male habitus. Photo by D. Gavryushin.

Material examined. 1 ♂, 19. v. 2011, Alba, Alba Iulia, 1 km E, 380 m a.s.l., 46°04'18"N, 23°32'02"E, sweeping on *Fagus sylvatica*, MT leg.

Distribution. Palaearctic species. Recorded in Belgium, the Czech Republic, Denmark, Finland, France, Germany, Great Britain, Hungary, Ireland, Italy, Lithuania, the Netherlands, Norway, Poland, Portugal, Romania, Slovakia, Spain, Sweden, Switzerland and Russia (ER).

Biology. Immature stages develop in *Trametes versicolor* (Ševčík 2010). Adult flight period ranges from V to X, the species is bivoltine.

Paraplatypeza atra (Meigen, 1804)

Published records. Mehádia [Mehadia, Caraș-Severin, Banat] (Thalhammer 1899); Mehádia [Mehadia, Caraș-Severin, Banat], Radna-Borberek [Rodna, Bistrița-Năsăud, Transilvania] (Szilády 1941).

Material examined. 1 ♂, 1. vi. 2008, Banat, Sfânta Elena, 4 km NE, Kulhavá skála, Vranovec cave (Figure 17), 300 m a.s.l., 44°42'12"N, 21°43'52"E, sweeping vegetation along brook, JR leg.; 1 ♀, 18. v. 2011, Alba, Alba Iulia, 1 km E, 380 m a.s.l., 46°04'18"N (46.07168), 23°32'02"E (23.53429), sweeping on *Fagus sylvatica*, K. Blahová & MT leg.

Distribution. Palaearctic species. Recorded in Austria, Belgium, the Czech Republic, Denmark, Finland, France, Germany, Great Britain, Hungary, Ireland, Italy, Lithuania, the Netherlands, Norway, Poland, Portugal, Romania, Slovakia, Sweden, Switzerland and Russia (ER).

Biology. Common species, larvae develop in various species of *Pluteus*, mainly in *Pluteus cervinus* (Ševčík 2010). Adult flight period ranges from IV to XI.



Figure 14. *Paraplatypeza bicincta* (Szilády, 1941), female habitus. Photo by D. Gavryushin.

***Paraplatypeza bicincta* (Szilády, 1941)**

Figure 14

Published records. Szászka [Szászka, Caraș-Severin, Banat] (Szilády 1941).

Distribution. Palaearctic species reaching to Oriental region. Distributed in the Czech Republic, Great Britain, Finland, Norway, Slovakia, Switzerland, Sweden, Russia and Myanmar [=Burma].

Biology. Rare species associated with *Pluteus* sp. The adults were reared from *Pluteus cervinus* several times by the first author (not published). Adult flight period ranges from VIII to X.

***Lindneromyia dorsalis* (Meigen, 1804)**

Figure 15

Published records. 1 ♂, „Bucarest” [București], A.L. Montandon leg., ex E. Brunetti coll. (BMNH) (Chandler 2001, in litt.).

Material examined. 1 ♂, 25. v. 2013, Mer occ., Muntii Locvei Mts., Sfanta Elena env., cca 44°40'N, 21°43'E, B. Mocek leg.; 1 ♀, 30. v. 2008, Banat, Latunas, 3 km W nr. Comoraste, 110 m a.s.l., 45°13'16"N, 21°28'10"E, sweeping over boggy meadow, JR leg.; 1 ♂, 1. vi. 2008, Banat, Sfanta Elena, 4 km NE, Kulhavá skála, Vranovec cave (Figure 17), 300 m a.s.l., 44°42'12"N, 21°43'52"E, sweeping vegeta-



Figure 15. *Lindneromyia dorsalis* (Meigen, 1804), female habitus. Photo by D. Gavryushin.

tion along brook, JR leg.; 1 ♀, 19. v. 2011, Alba, Alba Iulia, 1 km E, 380 m a.s.l., 46°04'18"N(46.07168), 23°32'02"E(23.53429), sweeping on *Fagus sylvatica*, MT leg.; 1 ♀, 19. v. 2011, Alba, Alba Iulia, 1 km E, 380 m a.s.l., 46°04'18"N (46.07168), 23°32'02"E (23.53429), sweeping on *Fagus sylvatica*, MT leg.; 2 ♀, 18. v. 2011, Alba, Alba Iulia, 1 km E, 380 m a.s.l., 46°04'18"N (46.07168), 23°32'02"E (23.53429), sweeping on *Fagus sylvatica*, K. Blahová & MT leg.

Distribution. Palearctic species. Recorded in Andorra, Austria, Belgium, Cyprus, the Czech Republic, Denmark, France, Germany, Great Britain, Greece, Hungary, Italy, Israel, Morocco, the Netherlands, Poland, Portugal, Romania, Slovakia, Spain, Switzerland, Turkey and Russia (ER).

Biology. Larvae mostly develop in fruiting bodies of various *Agaricus* sp. There are several unconfirmed records from other soft fungi (Chandler 2001). The adult females may be observed during oviposition directly on fruiting bodies. Adults occur in V–XI.

****Lindneromyia hungarica* Chandler, 2001**

Figure 16

Material examined. 1 ♀, 1. vi. 2008, Banat, Sfânta Elena, 2.5 km NE, 420 m a.s.l., 44°41'44"N, 21°43'10"E, sweeping over meadow, JR leg.



Figure 16. *Lindneromyia hungarica* Chandler, 2001, female habitus. Photo by D. Gavryushin.

Distribution. Palearctic species. Recorded in Austria, the Czech Republic, France, Germany, Great Britain, Hungary, Portugal, Slovakia, Spain and Switzerland.
New record for Romania.

Biology. The species was only recently separated from *L. dorsalis* and their larvae can develop together with those of *L. dorsalis* in the same fruiting body of an *Agaricus* sp. (Chandler 2001, Tkoč and Vaňhara 2008). Occasionally, the species can be caught on sporocarps of other fungi, e.g. Roháček and Ševčík (2013) collected one female on *Meripilus giganteus* in a park of Opava city (Czech Republic). Adults can be found in V–X.

Checklist of the Romanian Opetiidae and Platypezidae

Family Opetiidae

Opetia nigra Meigen, 1830

Family Platypezidae

Subfamily Callomyiinae

Agathomyia antennata (Zetterstedt, 1819)

Agathomyia collini Verrall, 1901

Agathomyia falleni (Zetterstedt, 1838)

Agathomyia setipes Oldenberg, 1916
Agathomyia vernalis Shatalkin, 1981
Agathomyia viduella (Zetterstedt, 1838)
Callomyia amoena Meigen, 1824
Callomyia elegans Meigen, 1804
Callomyia saibhira Chandler, 1976
Callomyia speciosa Meigen, 1824

Subfamily Platypezinae

Seri obscuripennis (Oldenberg, 1916)
Bolopus furcatus (Fallén, 1826)
Polyporivora ornata (Meigen, 1838)
Paraplatypeza atra (Meigen, 1804)
Paraplatypeza bicincta (Szilády, 1941)
Lindneromyia dorsalis (Meigen, 1804)
Lindneromyia hungarica Chandler, 2001

Discussion

Altogether 18 species of the families Opetiidae and Platypezidae are reported from Romania, representing 40.9 % of all flat-footed flies known from Europe. This number is far from the total number of species in this country and more research on flat-footed flies is needed to understand their distribution in Romania and Europe as a whole. Comparing the species number of the family Opetiidae and Platypezidae from Romania with the countries related to the Carpathian-Pannonian region it is an average number of species: Austria has 17 species (Chandler 2004), the Czech Republic 34 (Vaňhara 2009), Hungary 27 (Papp 2001, Weele 2001, Chandler 2004), Poland 25 (Chandler 2004), Slovakia 34 (Vaňhara 2009); the flat-footed fly fauna of Croatia, Serbia, Slovenia and Ukraine has not been systematically studied, thus the numbers are very low and not useful for comparison.

The discovery of the first male of *Callomyia saibhira* in Romania is the most important result of this study. The genitalia figured herein do not entirely agree with the description and figure of Chandler (2001). The differences in male genitalia between the Romanian and Amur specimen highlighted above may be the result of simple variation, or could be caused by comparing our specimen (Figure 10) with the somewhat simplified illustration of Chandler (2001) or may point to a more complicated taxonomic problem. To resolve this question, additional fresh material from both Europe and the Far East of Russia is needed in order to study variability in the morphology of the male genitalia and to test for differences using molecular methods. It also needs to be determined, if the males assigned to this species are correctly associated with the females, which appears to be a problem in the Nearctic species of *Callomyia* (Chandler 2001; Tkoč 2012).



Figures 17–18. Habitats of Opetiidae and Platypezidae in Romania: **17** Kulhavá skála, Vranovec cave
18 Alibeg brook valley. Photos by J. Roháček.

Acknowledgements

We would like to thank Dmitry Gavryushin for the photos he kindly provided to this paper. Peter J. Chandler and Heather J. Cumming are acknowledged for the review of the manuscript and English corrections. The study was supported by the Charles University in Prague, project GA UK No. 1294214. Support was also received from the grants of the Ministry of Culture of the Czech Republic (DKRVO 2013/12 and 2014/13, National Museum, Prague, 00023272) and the Institutional Research Support grant of the Charles University, Prague (No. SVV 260 087/2014). This research received support from the SYNTHESYS Project <http://www.synthesys.info/> which is financed by European Community Research Infrastructure Action under the FP7 “Capacities” Program under the title “Flat-footed flies (Diptera: Opetiidae and Platypezidae) of the Carpathian basin (HU-TAF-3853)”. The study of the junior author was financially supported by the Ministry of Culture of the Czech Republic by institutional financing of long-term conceptual development of the research institution (the Silesian Museum, MK000100595), internal grant of the Silesian Museum No. IGS201401/2014.

References

- Andrade R, Almeida J (2010) First Portuguese record of the family Opetiidae. *Boletín de la Sociedad Entomológica Aragonesa* 47: 1–446.
- Carles-Tolrá M, Báez M (2002) Platypezidae. In: Carles-Tolrá M (Ed.) *Catálogo de los Díptera de España, Portugal y Andorra (Insecta)*. Monografías Sociedad Entomológica Aragonesa, Vol 8. Zaragoza, 131 pp. <http://www.sea-entomologia.org/PDF/MSEA08.pdf>
- Chandler PJ (1976) A new species of *Callomyia* Meigen (Diptera: Platypezidae) from Bulgaria. *Entomologist Gazette* 27: 257–261.
- Chandler PJ (2001) The flat-footed flies (Diptera: Opetiidae and Platypezidae) of Europe. *Fauna Entomologica Scandinavica* Volume 36, Brill, Leiden, Boston, Köln, 276 pp.
- Chandler PJ (2004) Fauna Europaea: Platypezidae. In: Pape T (Ed.) *Fauna Europaea: Diptera, Brachycera*. Fauna Europaea version 2.6.2. <http://www.faunaeur.org>. [Accessed 30.vii.2014]
- Claussen C (2013) Neue Nachweise von Sohlenfliegen (Diptera: Platypezidae) aus Schleswig-Holstein (Deutschland). *Studia dipterologica* 20(1): 3–21.
- Cumming JM, Wood DM (2009) Morphology and terminology. In: Brown BV, Borkent A, Cumming JM, Wood DM, Woodley NE, Zumbado M (Eds) *Manual Of Central American Diptera: Volume 1*. NRC Research Press, Ottawa, Ontario, Canada, 9–50.
- Czerny L (1930) Clythiidae (Platypezidae). In: Lindner E (Ed.) *Die Fliegen der palaearktischer Region* 34. Schweizerbart'sche verlagsbuchhandlung, Stuttgart, 29 pp.
- Ebejer M, Andrade R (2010) First Records of Platypezidae (Diptera) from Mainland Portugal with a First Record for Iberia of the Genus *Paraplatypeza* Kessel & Maggioncalda. *Boletín de la Sociedad Entomológica Aragonesa* 47: 454.

- Krivosheina NP (2008) On biology of xylobiont platypezid larvae of the genus *Callosomyia* (Diptera, Platypezidae). *Entomological Review* 88: 973–982. doi: 10.1134/S0013873808080125
- Morley C (1918) On *Agathomyia collini* Verr. and other Platypezid Diptera. *Entomologist* 51: 88–90.
- Oldenberg L (1916) Neue europäische und südamerikanische Clythiiden (= Platypeziden; Dipt.). *Archiv für Naturgeschichte, Abteilung A*, 82(1): 120–136.
- Pakalniškis S, Bernotiene R, Lutovinovas E, Petrašiunas A, Podenas S, Rimšaite J, Sæther OA, Spungis V (2006) Checklist of Lithuanian Diptera. New and rare for Lithuania insect species. *Volumen 18*: 16–149. http://www.entomologai.lt/files/new_and_rare_vol_18.pdf
- Papp L (2001) Opetiidae. In: Papp L (Ed.) *Checklist of the Diptera of Hungary*. Hungarian Natural History Museum, Budapest, 225 pp.
- Roháček J, Ševčík J (2007) Faunistic records from Czech Republic and Slovakia: Platypezidae. In: Stloukalová V (Ed.) *Dipterologica bohemoslovaca*. Vol. 14. *Acta Zoologica Universitatis Comenianae* 47: 255–256.
- Roháček J, Ševčík J (2009) Opetiidae, Platypezidae. In: Roháček J, Ševčík J (Eds) *Diptera of the Poľana Protected Landscape Area – Biosphere Reserve (Central Slovakia)*. SNC SR, Administration of the PLA – BR Poľana, Zvolen, 150–155.
- Roháček J, Ševčík J (2011) The fauna of Opetiidae and Platypezidae (Diptera) in the Gemer region (Central Slovakia). *Časopis Slezského Zemského Muzea Opava (A)* 60: 41–47. doi: 10.2478/v10210-011-0005-8
- Roháček J, Ševčík J (2013) Diptera associated with sporocarps of *Meripilus giganteus* in an urban habitat. *Central European Journal of Biology* 8(2): 143–167. doi: 10.2478/s11535-013-0119-z
- Schacht W (2006) Kleiner Nachtrag zu “Zweiflügleraus Bayern” (Diptera: Platypezidae, Piophilidae, Lauxaniidae). *Entomofauna, Zeitschrift Entomologie* 27 (38): 483–484.
- Shatalkin AI (1985) *Obzor gribnykh mukh (Diptera, Platypezidae) fauny SSSR*. [A review of the flat-footed flies (Diptera, Platypezidae) of USSR]. *Trudy Zoologicheskogo Instituta Akademii Nauk SSSR* 23: 69–136. [in Russian]
- Shatalkin AI (1992) New and little-known Palaearctic Diptera of the families Platypezidae, Psilidae and Lauxaniidae. *Russian Entomological Journal* 1(2): 59–74.
- Speight MCG, Blackith RE, Blackith RM (1990) *Antichaeta brevipennis*, *Leucophenga maculata*, *Polyporivora picta* and *Tephrochlamys tarsalis* (Diptera): insects new to Ireland. *Irish Biogeographical Society Bulletin* 13(2): 131–136.
- Ståhls G (2014) Checklist of the families Opetiidae and Platypezidae (Diptera) of Finland. *ZooKeys* 441: 209–212. doi: 10.3897/zookeys.441.7639
- Ståhls G, Kahanpää J (2006) New data on Platypezidae and Opetiidae (Diptera) of Finland. *Sahlbergia* 11: 1–6.
- Szilády Z (1941) Clythiiden (Platypezidae) aus Ungarn (Diptera). *Annales Musei Nationalis Hungarici, Zoologica* 43: 102–104.
- Ševčík J (2004) Diptera associated with fungi in the Poloniny National Park (Bukovské vrchy Mts., East Slovakia). In: Barták M, Kubík Š (Eds) *Dipterologica bohemoslovaca* 13. *Folia Facultatis Scientiarum Naturalium Universitatis Masarykianae Brunensis, Biologia* 109: 293–304.

- Ševčík J (2010) Czech and Slovak Diptera associated with fungi. Slezské zemské muzeum, Opava, 112 pp.
- Thalhammer J (1899) Ordo Diptera. Fauna regni Hungariae, III. Animalium Hungariae hucusque cognitorum enumeratio systematica. Edidit regia societas scientiarum naturalium Hungarica. Akadémiai Kiadó, Budapest, 76 pp.
- Tkoč M (2011) New records of *Polyporivora picta* (Meigen, 1830) from the Czech Republic and Greece with notes on its larval biology and distribution in Europe (Diptera: Platypezidae). *Časopis Slezského Zemského Muzea Opava (A)* 60: 263–267. doi: 10.2478/v10210-011-0030-7
- Tkoč M (2012) A new species of the flat-footed fly genus *Callomyia* (Diptera: Platypezidae) from South China. *Acta Entomologica Musei Nationalis Pragae* 52(1): 289–296. http://aemnp.eu/PDF/52_1/52_1_289.pdf
- Tkoč M, Barták M (2013) Flat-footed flies (Diptera: Platypezidae and Opetiidae) of Vráž nr. Písek (Czech Republic). In: Kubík Š, Barták M (Eds) Workshop on biodiversity, Jevany, Česká zemědělská univerzita v Praze, Praha, 389–395.
- Tkoč M, Mocek B, Barták M (2012) New and rare records of the flat-footed flies (Diptera: Platypezidae) from the Czech Republic and Slovakia. *Klapalekiana* 48: 275–278.
- Tkoč M, Vaňhara J (2006) Faunistic Records: Diptera, Platypezidae, *Lindneromyia hungarica* Chandler, 2001. *Entomofauna carpathica* 18: 36.
- Tkoč M, Vaňhara J (2008) The puparium and mature larva of the flat-footed fly *Lindneromyia hungarica* Chandler, 2001 (Diptera: Platypezidae). *Zootaxa* 1730: 59–64. <http://www.mapress.com/zootaxa/2008/f/z01730p064f.pdf>
- Vaňhara J (1986) The flat-footed flies (Opetiidae and Platypezidae, Diptera) in a lowland forest. In: Olejníček J, Spitzer K (Eds) *Dipterologica bohemoslovaca*. Vol. 4. Jihočeské muzeum v Českých Budějovicích, Přírodní vědy, České Budějovice, 79–84.
- Vaňhara J (2009) Opetiidae Rondani, 1856, Platypezidae Fallén, 1815. In: Jedlička L, Stloukalová V, Kúdela M (Eds) Checklist of Diptera of the Czech Republic and Slovakia. Electronic version 2. <http://www.edvis.sk/diptera2009/> [Accessed 30.vii.2014]
- Weele van der R (2001) Platypezidae. In: Papp L (Ed.) Checklist of the Diptera of Hungary. Hungarian Natural History Museum, Budapest, 226–228.