



Published in final edited form as:

Analyst. 2014 July 7; 139(13): 3206–3218. doi:10.1039/c4an00056k.

## Microfluidic approaches for epithelial cell layer culture and characterisation

Roland Thuenauer<sup>a,b,\*</sup>, Enrique Rodriguez-Boulan<sup>c</sup>, and Winfried Römer<sup>a,b</sup>

<sup>a</sup>Institute of Biology II, Schänzlestraße 1, Albert-Ludwigs-University Freiburg, , 79104 Freiburg, Germany

<sup>b</sup>BIOSS - Centre for Biological Signalling Studies, Schänzlestraße 18, Albert-Ludwigs-University Freiburg, 79104 Freiburg, Germany

<sup>c</sup>Margaret M. Dyson Vision Research Institute, Weill Cornell Medical College, 1300 York Avenue, New York, New York 10065, USA

### Abstract

In higher eukaryotes, epithelial cell layers line most body cavities and form selective barriers that regulate the exchange of solutes between compartments. In order to fulfil these functions, the cells assume a polarised architecture and maintain two distinct plasma membrane domains, the apical domain facing the lumen and the basolateral domain facing other cells and the extracellular matrix. Microfluidic biochips offer the unique opportunity to establish novel *in vitro* models of epithelia in which the *in vivo* microenvironment of epithelial cells is precisely reconstituted. In addition, analytical tools to monitor biologically relevant parameters can be directly integrated on-chip. In this review we summarise recently developed biochip designs for culturing epithelial cell layers. Since endothelial cell layers, which line blood vessels, have similar barrier functions and polar organisation as epithelial cell layers, we also discuss biochips for culturing endothelial cell layers. Furthermore, we review approaches to integrate tools to analyse and manipulate epithelia and endothelia in microfluidic biochips, including methods to perform electrical impedance spectroscopy, methods to detect substances undergoing trans-epithelial transport via fluorescence, spectrophotometry, and mass spectrometry, techniques to mechanically stimulate cells via stretching and fluid flow-induced shear stress, and methods to carry out high-resolution imaging of vesicular trafficking with light microscopy. Taken together, this versatile microfluidic toolbox enables novel experimental approaches to characterise epithelial monolayers.

### 1 Introduction

Epithelial cells constitute the key functional component of most body organs and organise themselves as selective barriers between the internal medium of the organism and various organ luminal compartments (gut lumen, urinary space, lung air space, lumina of exocrine and endocrine glands...)<sup>1</sup>. *In vitro* models of epithelia provide well-defined and accessible systems that enable investigating basic properties of epithelial cells<sup>1</sup>, as well as to unravel mechanisms of diseases that are caused by malfunctions of the epithelial cell polarity

\* Correspondence to Roland Thuenauer: roland.thuenauer@yahoo.de.

program (e.g. cancer<sup>2</sup>, microvillus inclusion disease<sup>3, 4</sup>, congenital sucrase-isomaltase deficiency<sup>5</sup>, cystic fibrosis<sup>6</sup>, and ciliopathies<sup>7</sup> such as polycystic kidney disease<sup>8, 9</sup>, retinitis pigmentosa<sup>10, 11</sup> or bardet-biedl syndrome<sup>12</sup>). Furthermore, *in vitro* models of epithelia have also important pharmaco-therapeutic applications. As epithelial barriers are a major obstacle that needs to be overcome for targeted drug delivery<sup>13–15</sup>, *in vitro* models offer a powerful tool to identify permeable candidate drugs as well as to understand the underlying transport processes.

In order to generate well-differentiated epithelial cell layers *in vitro*, it is necessary to reconstitute their natural microenvironment as closely as possible. This is traditionally achieved by culturing epithelial cells on Transwell filters<sup>1</sup>, which allow provision of different culture media to each side of a two-dimensional epithelial cell layer. Another commonly utilised approach is based on placing epithelial cells, such as Madin-Darby canine kidney (MDCK) cells<sup>16, 17</sup> or Michigan Cancer Foundation - 7 (MCF-7) cells<sup>18</sup>, in gels resembling the extracellular matrix, where they form self-organised three-dimensional cysts with internal lumina. Although these techniques allow the *in vitro* generation of epithelial cell layers with some basic features of *in vivo* epithelia, they do not replicate all features of the *in vivo* microenvironment of epithelia. Here, microfluidic approaches provide a new perspective, because they enable a much more precise and dynamic control of multiple parameters of the cell's microenvironment. Microfluidic approaches ensure continuous supply of fresh medium while maintaining realistic ratios of cell volume to growth medium volume. Moreover, microfluidic models enable to resemble the challenges faced by epithelia *in vivo*, such as fluid shear stress or mechanical stretching. In addition, epithelia in microfluidic biochips are easily accessible for analytical tools. Various analytical tools to read out biological relevant parameters based on fluorescence, mass spectrometry, electrical impedance spectroscopy, and light microscopy have been directly integrated in microfluidic biochips. This review critically discusses recent advances in microfluidic biochip designs that enable novel approaches for culturing and characterising epithelial cell layers. The design and manufacturing of biochips, together with the cell culture and biological characterisation in microfluidic biochips, is a highly interdisciplinary endeavour. Therefore, this review aims to provide an overview for both, biologists interested in novel techniques, and for chemists, physicists and engineers interested in finding biologically relevant applications for their innovations, in order to stimulate interdisciplinary exchange.

## 2 Background: Structure and functions of epithelial cell layers

In order to carry out selective barrier and transport functions, epithelial cells assume a polarised architecture<sup>1</sup> (Figure 1). Tight junctions seal neighbouring cells together, so that the passage of substances along the space between cells, the so-called paracellular pathway, is regulated. The tight junctions also ensure that two distinct plasma membrane domains, the apical and the basolateral plasma membrane domain, can exist without diffusive intermixing<sup>1</sup>. This enables polarised epithelial cells to establish and maintain a different lipid and protein composition at their apical and basolateral plasma membrane domains via highly dynamic intracellular trafficking and sorting mechanisms. Such polarised distribution of transporters, carriers and channels between the apical and basolateral plasma membrane

domains is the basis for the vectorial transport, secretory, and absorptive functions of epithelial cell layers<sup>1</sup>.

The apical plasma membrane faces the luminal space of organs. In many epithelia, such as the small intestinal epithelium or the kidney proximal tubule epithelium, the surface area of the apical plasma membrane is enlarged by actin-filled protrusions, so-called microvilli. In addition, most epithelial cells express a primary cilium, which is a several micrometre long microtubule-supported protrusion from the apical plasma membrane that serves as a multifunctional sensory antenna<sup>19, 20</sup>.

Cell-cell contacts along the lateral part of the basolateral plasma membrane are maintained by intercellular adhesion molecules, such as calcium-dependent cadherins, that contribute to the formation of belt-like adherens junctions and spot desmosomes. The basal domain of the basolateral plasma membrane faces the basement membrane, a condensation of extracellular matrix (ECM), and expresses a variety of receptors (e.g. integrins) for components of the basement membrane. Nutrients for epithelial cell layers are provided by blood vessels in the underlying interstitial tissue of the ECM. The nutrients traverse the basement membrane, which must be kept appropriately permeable in order to ensure that nutrients reach receptors and transporters in the basolateral plasma membrane that import them into the cell.

Blood vessels are lined on their luminal side by endothelial cells, which are organised according to similar principles as epithelial cells (Figure 1). Endothelial cells also have tight junctions that confer them with selective barrier functions; importantly, the permeability of their tight junctions varies with the localisation in the vascular system<sup>21</sup>. For example, the endothelium that forms the blood-brain barrier (BBB) exhibits very 'tight' tight junctions in order to maintain and protect the microenvironment of the central nervous system<sup>22</sup>. Microfluidic models for culturing and characterising epithelial cell layers are also suitable for endothelial monolayers and we will therefore treat microfluidic biochips for epithelia and endothelia in this review.

It is also noteworthy that epithelial polarity is tightly controlled by a self-organising network of polarity proteins and lipids<sup>2, 17, 23</sup>, and a highly organised vesicular trafficking system<sup>1</sup>. This is underlined by the fact that malfunctions in epithelial polarity frequently lead to cancer formation<sup>24</sup>. In fact, 90% of all human cancers are derived from epithelial cells<sup>2</sup>.

Furthermore, individual cells can exhibit a uniform directional organisation within the plane of an epithelial monolayer, which is termed planar cell polarity<sup>25</sup>. This manifests itself, for example, in a uniform orientation of cilia in the airway epithelium<sup>26</sup>, or in the alignment of various protrusions from epithelial cells, such as cuticular hairs in the *Drosophila melanogaster* wings or pleura<sup>27</sup>.

### 3 Microfluidic biochip architectures for culturing epithelial cell layers

During the last decade increasingly complex microfluidic biochips to culture epithelial cells have been developed. Significant progress has been made to design chips that replicate the microenvironment, 3D-geometries and stimuli faced by epithelial cell layers *in vivo*.

### 3.1 Basic features of microfluidic biochips for culturing epithelial cells

Virtually all developed biochips for culturing epithelial cell layers are based on polydimethylsiloxane (PDMS). This is mainly due to the fact that for this material soft lithography-based methods, which enable rapid manufacturing of 3D-microstructures, are well established<sup>28, 29</sup>. Furthermore, PDMS is biologically compatible<sup>30</sup>, permeable to gases, which allows oxygen supply for cells, is transparent and exhibits low autofluorescence, which is beneficial for on-chip light microscopy<sup>31</sup>. However, PDMS has also some disadvantages, for example its gas permeability makes it also permeable for water vapour, which can cause changes in the osmolarity of the cell culture medium. Furthermore, PDMS has a propensity to absorb small molecules<sup>31</sup>.

Already simple microfluidic biochip designs that consist of channels or chambers in which the cells can grow, allow to create *in vivo*-like fluid flow conditions<sup>32–35</sup> and/or investigate the effects of surface topography on epithelial cell layers<sup>36</sup> (Figure 2A). For example, Frohlich et al. demonstrated that a surface topography bearing 0.75  $\mu\text{m}$  wide and deep linear grooves functions in concert with fluid shear stress to align renal epithelial cells and to modulate formation of tight junctions<sup>36</sup>. It is also possible to manufacture channels with circular cross-section in order to replicate cylindrical vessel geometries<sup>37, 38</sup>.

However, *in vivo*, epithelial cells within a monolayer receive their nutrients from the basolateral side (Figure 1). This can be efficiently mimicked by microfluidic biochip architectures that incorporate a porous membrane (Figure 2B). The porous membrane carries the epithelial cell layer and separates the channels that allow access from the apical and basolateral side. Pore diameters smaller than 1–2  $\mu\text{m}$  are usually required to prevent migration of individual cells through the pores. In order to guarantee fast diffusive transport through the pores, the porous membranes should not be thicker than a few ten micrometres.

### 3.2 Manufacturing and integration of porous membranes

In most chip architectures commercially available porous membranes made of polyester or polycarbonate with a pore diameter of 0.4  $\mu\text{m}$ , identical to the porous membranes utilised in Transwell filters, are applied. Also polyethersulfone membranes with very small pore diameter (0.04  $\mu\text{m}$ ), which are traditionally used in dialysis devices, have been utilised in microfluidic biochips<sup>41–43</sup>.

The challenge of integrating commercially available porous membranes is their leakage-free bonding to the PDMS-based parts of the chip. Some groups reported that polyester membranes could be bonded to PDMS via oxygen plasma treatment<sup>39, 44–46</sup>, whereas others combined oxygen plasma with additional treatments, such as sputter-coating the membrane with  $\text{SiO}_2$ <sup>47</sup> or functionalisation with (3-aminopropyl)triethoxysilane (APTES)<sup>48</sup>. As alternative, fluid PDMS pre-polymer<sup>49</sup> or glue<sup>50, 51</sup> can be utilised to ensure tight bonding of the porous membrane, whereby PDMS pre-polymer or glue is applied only to non-cell culture areas of the porous membrane. Furthermore, tight clamping of a PDMS/membrane/PDMS sandwich with a microchip holder has been utilised<sup>41–43</sup>, which has the advantage that the membrane with an attached cell layer can be extracted after experiments.

Several microstructuring techniques have been developed to manufacture thin PDMS membranes with  $\mu\text{m}$ -sized pores<sup>52–57</sup>. A technique that is easy to use and yields pores down to a few  $\mu\text{m}$  in diameter is to spin coat PDMS pre-polymer on molds that bear thin posts in order to generate the pores<sup>54, 56, 57</sup>. In order to reduce the thickness of the PDMS membrane, the PDMS pre-polymer can be diluted with toluene<sup>54</sup> or cyclohexane<sup>57</sup>. Another approach is to air-blow pores<sup>55</sup>. This is achieved with a substrate that contains tiny holes. During PDMS pre-polymer is cured, air is blown through the holes, thus locally removing PDMS over the substrate pores. Although this technique is more difficult to use, well-defined pores down to 1  $\mu\text{m}$  in diameter can be produced. Furthermore, methods to manufacture pores in PDMS membranes with sub- $\mu\text{m}$  diameter have been described<sup>52</sup>. To this end, PDMS pre-polymer was spin coated on a mold with pyramid-shaped posts. Subsequent etching of PDMS with  $\text{SF}_6$  plasma allowed adjusting the aperture size of the pores on the side of the membrane where the pyramid tips of the mold were located. Porous PDMS membranes have the advantage that the well-established methods to bond PDMS surfaces together<sup>58–60</sup> can be applied. In addition, porous PDMS membranes are highly optically transparent with a refractive index ( $n \sim 1.4$ )<sup>61</sup> close to water ( $n = 1.33$ ), which is beneficial for high-resolution microscopy, and are elastic, which enables to perform on-chip mechanical stretching of the epithelial cell layer<sup>62–64</sup>.

Another alternative are chips that contain adaptors for Transwell filters, which has the advantage that established Transwell filter culturing methods can be combined with microfluidic tools<sup>65</sup>. Furthermore, methods for manufacturing and integrating non-flat porous membranes have been developed. This includes techniques to topographically pattern porous membranes in the sub- $\mu\text{m}$  scale via hot-embossing without compromising the pores<sup>66</sup>. Such surface topography provides spatial cues, similar to physiological cues found *in vivo*<sup>66</sup>, along which cells can align in order to establish planar cell polarity. Esch et al. described a method to manufacture porous membranes made of SU-8 that can be deformed in the  $\mu\text{m}$ -scale to provide a non-flat support that resembles the three-dimensional shape of intestinal villi<sup>67</sup>. Moreover, a hollow fibre membrane has been successfully integrated in a microfluidic chip in order to mimic the geometry and function of a renal tubule<sup>68</sup>. In addition, microfluidic biochips with micro-gap arrays that separate two channels, thus forming horizontal pores between the channels, have been developed<sup>69, 70</sup>. This allowed manufacturing bifurcations and junctions of micro-gap-spanning BBB-cell layers<sup>69</sup>, which is a feature that is often found *in vivo*.

### 3.3 Incorporation of extracellular matrix (ECM) coatings and ECM gels

In most biochips for culturing epithelial cell layers the surfaces on which the cells grow are coated with proteins mimicking the ECM (e.g. collagen<sup>66, 71</sup>, fibronectin<sup>72</sup>, poly-L-lysine<sup>73</sup>...) in order to facilitate cell adhesion and cell differentiation. Coating is easily achieved by flowing an ECM-protein solution through the cell culture chamber. This approach leads to another interesting set of microfluidic models in which structured ECM gels are utilised as substrate for epithelial cell layers. Puleo et al. manufactured a chip in which a collagen vitrigel layer serves as separator between apical and basolateral fluid channel networks, thus replacing a porous membrane as permeable carrier of the epithelial cell layer<sup>40</sup> (Figure 2C). The collagen vitrigel layer has the advantage that, once a corneal

epithelial cell layer is grown on top, the gel can be removed by enzymatic degradation, and a supporting stromal cell layer can be grown underneath<sup>40</sup>. Furthermore, traditional ECM gel-based culture systems, in which epithelial cells form self-organised three-dimensional cysts, can be equipped with a microfluidic perfusion system<sup>74</sup>. Finally, several chips that contain channel sidewalls made of ECM gels or chips that contain entire channel networks within ECM gels have been developed. These approaches, which are described in more detail in excellent recent reviews<sup>75–78</sup>, can be utilized to generate endothelial cell-lined vascular networks and provide the means to study angiogenesis and tumour cell invasion under *in vivo*-like conditions.

## 4 Integration of tools to analyse and manipulate epithelial cell layers in microfluidic biochips

Microfluidic models of epithelia offer the advantage that multiple tools can be integrated on-chip. The following section discusses which tools are available to control and measure biologically relevant parameters of epithelial cell layers and describes integration techniques. Finally, we highlight microfluidic models of lung epithelium, because there are impressive examples available that illustrate the potential of highly integrated microfluidic biochips to resemble complex epithelial cell layer functions on-chip.

### 4.1 Electrical characterisation

Epithelial cells form electrically tight barrier layers, whereby ‘electrically tight’ means that the tight junctions prevent the passage of ion currents along a paracellular pathway. Although the extend of electrical tightness depends on the cell type (typical TEER values in microfluidic models range from  $\sim 100 \Omega\text{cm}^2$  for e.g. Madin-Darby canine kidney II cells<sup>50, 79</sup> to  $\sim 250 \Omega\text{cm}^2$  for e.g. BBB cells<sup>80</sup>), measurement of the trans-epithelial electrical resistance (TEER) is a reliable indicator of the development of functional tight junctions and thus the differentiation status of polarised epithelia. TEER measurement is routinely used in Transwell culture systems to validate and monitor the differentiation of epithelial monolayers<sup>81, 82</sup>.

Typically, TEER measurements are not performed with DC current, which would have undesirable side effects on the cells and electrodes, but at low AC frequencies (usually 12.5 Hz<sup>83</sup>). However, more information can be obtained if the electrical resistance is measured over a range of AC frequencies (up to a few MHz), which is known as impedance spectroscopy<sup>65, 79, 84, 85</sup>. The impedance of epithelia strongly depends on the AC frequency<sup>85</sup>, which indicates that at higher frequencies the influence of the capacitance of the lipid bilayer of the cell membrane becomes dominant. In order to take into account these effects, equivalent circuit models for epithelial barriers have been developed. In their simplest form<sup>84, 85</sup> (Figure 3A), a constant phase element (CPh) accounts for the double layer capacitance of the electrodes and a resistor (RM) accounts for the resistance of the medium. The cell monolayer itself is modelled by a resistor (RC) that accounts for the resistance of the paracellular pathway, which corresponds to the TEER, in parallel with a capacitor (CM) that accounts for the capacitance of the cell membrane. An alternative approach to model the frequency-dependence of the electrical resistance of epithelia is finite

element modelling<sup>65</sup>. Finite element modelling allows to calculate the electric field for a given geometry of the porous membrane and the cells and thus to directly investigate the influence of these geometries on the TEER.

Several strategies to perform on-chip TEER measurements have been developed, including direct integration of electrodes in the chip<sup>50, 51, 65, 80, 86</sup> (Figure 3B), insertion of small-diameter electrodes through the apical and basolateral channels<sup>62, 63</sup>, or through access holes<sup>79, 84</sup>. Ag/AgCl-electrodes and platinum-electrodes are most commonly used<sup>50, 51, 79, 80, 84</sup>, but also gold-plated electrodes covered with a conducting polymer (polypyrrole doped with polystyrene sulfonate) in order to reduce the influence of the double layer capacitance have been applied<sup>65</sup>. In order to validate on-chip TEER-measurement techniques, tests in which the integrity of the epithelial monolayer is intentionally compromised should be performed. This can be done by Ca<sup>2+</sup>-removal, which reversibly dissolves cell-cell contacts, and is achieved by washes with Ca<sup>2+</sup>-free medium and Ca<sup>2+</sup>-chelation with compounds such as ethylene glycol tetraacetic acid (EGTA)<sup>65</sup> or ethylenediaminetetraacetic acid (EDTA)<sup>50</sup>. Alternatively, irreversible disintegration of the monolayer by treatment with a detergent such as Triton X-100 can be performed<sup>65</sup>.

On-chip TEER measurements are ideally suited for monitoring in real-time how the tightness of epithelial and endothelial barriers is affected by stimuli. In a microfluidic model of the BBB, Booth et al. demonstrated by TEER measurements that co-culture with astrocytes increases barrier tightness<sup>80</sup>. Furthermore, they showed that histamine, an inflammatory mediator that has been shown to lead to the formation of transient gaps between endothelial cells *in vivo*<sup>87</sup>, also transiently lowered TEER in their microfluidic BBB model. In a different microfluidic model of the BBB, Griep et al. utilised TEER monitoring to directly show that fluid shear stress positively influences BBB tightness, whereas tumour necrosis factor  $\alpha$  (TNF- $\alpha$ ), a pro-inflammatory cytokine<sup>88</sup>, negatively affects barrier tightness<sup>84</sup>. In a microfluidic model of the intestinal epithelium based on Caco-2 cells, Kim et al. utilised TEER monitoring to show that luminal co-culture with a probiotic strain of bacteria, *Lactobacillus rhamnosus* GG, increases intestinal barrier tightness<sup>63</sup>.

## 4.2 Tools to characterise trans-epithelial transport

Epithelial barriers are the major gatekeepers that control the exchange of substances between different compartments of multicellular eukaryotes. According to physiological requirements, epithelial barriers regulate the exchange of molecules and ions between the luminal space or blood and interstitial fluid. The lipid bilayer of cellular plasma membranes and the tight junctions prevent passive transport of hydrophilic substances across epithelial cell layers. In order to transport specific molecules across epithelia in a regulated manner, three major trans-epithelial transport pathways exist (Figure 4A). First, epithelial cells exhibit polarised expression of dedicated transporters, pumps, channels and carriers in their apical and basolateral plasma membranes, through which specific molecules are transported to the other side of the epithelium via the cytosol of the cells. This mode of transport is for example utilised to absorb nutrients in the small intestine or to reabsorb molecules in the kidney. Second, epithelial cells possess machineries to transport specific molecules via

sequential endocytosis, vesicular transport, and exocytosis to the other side, which is termed transcytosis. As the first two pathways traverse individual cells, they are collectively termed transcellular pathways. Third, the tight junctions can be selectively permeable for certain substances, which allows regulated transport along the paracellular pathway. Furthermore, epithelial cell layers form the basic functional component of glands and can produce and secrete specific molecules in a vectorial manner. Malfunctions of the highly specific transport mechanisms of epithelia are the cause for a plethora of diseases<sup>1, 23, 89</sup>. However, the affected tissues are mostly inaccessible in living organisms, which makes *in vivo* studies of trans-epithelial transport intrinsically difficult. Microfluidic models of epithelial transport functions are therefore a valuable contribution to shed light on transport-related disease mechanisms.

In microfluidic biochips that incorporate porous membranes as growth substrate for the epithelial cell layer, the apical and basolateral side are independently accessible via microfluidic channels. This allows direct monitoring of tracer molecules undergoing trans-epithelial transport. Furthermore, by applying a constant flow of solution, microfluidic approaches enable to keep the tracer concentration in the donor channel constant, which is not possible in traditional Transwell filter-based assays with their static reservoirs. It has become standard to use non-interacting tracer molecules (e.g. dextrans or inulin), which can passively diffuse through leaks, as means to assay the quality of chip-grown epithelial cell layers. This is done by applying a tracer solution to one side of the epithelial cell layer and collecting fluid aliquots from the exit port of the channel connected to the opposite side. The collected fluid aliquots are mostly assayed off-chip, which has the advantage that conventional detection methods can be applied. However, off-chip analysis typically requires large volumes. Thus, the advantages of microfluidic models to resemble *in vivo* ratios of extracellular fluid volume to cell volume and to limit the amount of applied tracer molecules are lost. This problem is resolved by on-chip detection systems, for which only a few examples in microfluidic biochips for epithelial cell layer characterisation have been demonstrated<sup>39, 41–43, 47, 73, 90</sup>.

One possibility is tracer detection via fluorescence, which has the disadvantage that the molecule of interest has to be fluorescent or fluorescently tagged, but has the advantage that very high detection sensitivities can be achieved. Young et al. demonstrated on-chip detection of fluorescence signals with a light microscope in a microfluidic model of an epithelium<sup>90</sup>, whereas Kimura et al. incorporated holes for inserting optical fibres to enable fluorescence detection<sup>47</sup>.

Gao et al. have developed a strategy to perform on-line mass spectrometry detection of trans-epithelial transport in a microfluidic model of the intestinal epithelium based on Caco-2 cells<sup>73</sup> (Figure 4B). To this end, microfluidic solid-phase extraction columns were directly attached to perform sample purification for detection with a connected electrospray ionisation quadrupole time-of-flight mass spectrometer. The functionality was demonstrated by characterising the trans-epithelial transport of the model drug curcumin. Mass spectrometry has the capability of label-free detection of many molecules in parallel, which makes such a system very interesting for large-scale drug screening applications.



Another alternative detection approach is spectrophotometry<sup>41–43</sup>. This method also allows label-free and parallel detection of a few tracer molecules, given that their spectra are sufficiently different.

Ramadan et al. described a preliminary strategy to integrate an immunomagnetic assay, which is based on magnetic beads bearing antibodies in order to capture and detect molecules<sup>39</sup>. This is a promising approach because large collections of antibodies against physiologically relevant molecules are available.

### 4.3 Stimulation of epithelial cell layers by fluid flow and mechanical stretching

Epithelial cell layers that line ducts, and especially endothelial cell layers that line the blood vessels, are subjected to constantly changing fluid flow that causes shear strain in the cells (Figure 5A). It is interesting to note that epithelial and endothelial cells actively sense fluid flow. Their primary flow sensor is believed to be the primary cilium, because it has been shown that fluid flow-mediated bending of the primary cilium elicits intracellular  $\text{Ca}^{2+}$ -signalling<sup>92, 93</sup>. By design, channels in microfluidic devices can readily be subjected to fluid flows of defined durations and velocities. Thus, microfluidic biochips are powerful tools to investigate the effects of fluid flow on cells and have helped to reveal that other cellular flow sensors might exist. Rahimzadeh et al. showed that fluid flow exerts mechanical stress on the actin cytoskeleton of MDCK cells<sup>94</sup>, which may constitute the basis for a flow-sensing mechanism. Furthermore, Tkachenko et al. demonstrated that under strong fluid shear, when endothelial cells disassemble primary cilia, mechanical strain due to displacement of nuclei under hydrodynamic drag functions as flow sensor<sup>34</sup>.

In addition, microfluidic biochips have allowed solidifying the hypothesis that fluid shear stress is required for complete differentiation of epithelia and endothelia, which are subjected to constant fluid flow *in vivo*. By using microfluidic models of the kidney it was demonstrated that kidney epithelial cells respond to fluid shear stress by increased cell height and actin cytoskeleton rearrangement, which results in the formation of tighter cell layers<sup>44–46</sup>. In addition, other differentiation indicators, including albumin transport, glucose reabsorption, brush border alkaline phosphatase activity, cisplatin toxicity, and Pgp efflux transporter activity, showed values closer to *in vivo* values in fluid flow-treated cells when compared to cells cultured in traditional Transwell filters without fluid flow<sup>45</sup>. Similar positive effects of fluid shear stress on barrier differentiation were also observed in microfluidic models of the BBB<sup>80, 84</sup>.

Endothelia in arteries experience pulsatile and oscillatory shear stress due to temporal variation of the blood flow. Shao et al. developed a microfluidic biochip in which endothelial cells can be subjected to pulsatile and oscillatory fluid flow via an integrated pneumatic micropump<sup>70</sup>. In this chip, endothelial cells are trapped in a microgap and then proliferate to form a functional endothelial barrier along the microgap. This elegant approach allowed monitoring trans-endothelial permeability under *in vivo*-like pulsatile flow conditions.

Many epithelial cell layers, as e.g. in the lung or in the intestine, experience cyclic mechanical strain by stretching (Figure 5A). Mechanical stretching of epithelial cell layers

can be performed in microfluidic biochips by growing the cell layer on flexible porous PDMS membranes<sup>62–64, 95</sup> (Figure 5B). Kim et al. reported that the combination of fluid flow and cyclic mechanical strain significantly improved the differentiation status in a microfluidic model of the intestinal epithelium based on Caco-2 cells<sup>63, 64</sup>. Upon combinatorial stimulation, the cells formed intestinal villi and also developed basal proliferative crypts. Furthermore, the cells differentiated into absorptive, mucus-secretory, enteroendocrine, and Paneth cells that were found at the same positions as *in vivo*<sup>64</sup>.

Moreover, microfluidic models of the lung that include means to mechanically stretch epithelial cell layers have been developed<sup>62, 95</sup>. The lung-related models are described in more detail in section 4.5.

#### 4.4 Novel light microscopy techniques for epithelial cell layers enabled by biochip technology

The polar organisation of epithelial cells is established and maintained by a remarkably complex vesicular trafficking machinery, which sorts and transports membrane proteins to apical and basolateral plasma membrane domains via exocytic and recycling routes<sup>1</sup>. The concluding step in plasma membrane delivery is the fusion of cargo-bearing vesicles with the plasma membrane. Total internal reflection fluorescence (TIRF) microscopy, which utilizes a shallow evanescent wave to spatially limit the excitation volume, offers sufficient resolution in space and time to directly visualise vesicle fusion events<sup>96</sup>.

However, because of the physical requirements to generate an evanescent wave<sup>97</sup>, TIRF microscopy has been classically limited to image processes at or close to those parts of the plasma membrane that are attached to a support with high refractive index, such as a glass cover slip<sup>98</sup>. This limitation can be overcome by a microfluidic biochip that allows TIRF imaging also at the non-support attached apical plasma membrane of epithelial cells by moving the apical plasma membrane into the region of the evanescent wave<sup>72</sup>. The functional principle of the biochip is outlined in Figure 6A. A polarised monolayer of epithelial cells is grown on a moveable platform within the biochip (Figure 6Aa). The platform is attached to the central area of a thin PDMS membrane that covers a microfluidic channel network. When pressure is applied to the channel network, the covering membrane will bulge and therefore allow positioning of the platform with sub- $\mu\text{m}$  precision. For imaging, the whole biochip is inverted and the apical plasma membrane of the cells is precisely approached to a glass cover slip, thus allowing TIRF imaging of the apical plasma membrane (Figure 6Ab). The biochip enabled the first direct visualisation of vesicle fusion events at the apical plasma membrane of polarised epithelia<sup>72</sup> (see Figure 6B for an example of an apical TIRF recording of a fusion event), as well as to resolve that vesicle fusion events occur at the base of apical microvilli<sup>99</sup>.

#### 4.5 Towards ‘organs-on-chips’: Microfluidic models of the lung

Lung epithelial cell layers face unique environmental challenges. Their apical surface is exposed to air, only protected by a thin mucus layer (in the upper airway) or surfactant layer (in the lung alveoli). Due to breathing, lung epithelium is periodically stretched. Furthermore, pathogens as well as small pollutants have direct access to the lung epithelium.

Several tools to reconstitute lung-typical environmental challenges have been integrated in microfluidic biochips<sup>62, 95, 100–103</sup>. Microfluidic lung models have contributed significantly to the understanding of conditions related to these challenges.

One example is airway reopening. This is an event that occurs in a variety of lung diseases that cause instabilities of the pulmonary surfactant, which then leads to the formation of small liquid plugs that block the small airways. The liquid plugs move with the air stream over the lung epithelium until the plugs eventually rupture, allowing the airways to be reopened<sup>100</sup>. In order to reconstitute airway reopening, a microfluidic biochip has been developed in which a lung epithelial cell layer is grown on a porous polyester membrane and can be challenged by liquid plug flow that is produced with an integrated plug flow generator<sup>100, 103, 104</sup>. In the plug flow generator, a liquid stream is focused by an air stream to form a stratified air-liquid two-phase flow. Briefly switching off the air stream causes the generation of a liquid plug<sup>100, 104</sup>. This microfluidic model allowed to reveal that the forces exerted by moving air/liquid interphases of a propagating plug, as well as plug rupture, can have detrimental effects on lung epithelial cells<sup>100, 103</sup>. Interestingly, addition of surfactant significantly reduced cell injury due to propagating liquid plugs<sup>103</sup>. In another microfluidic model of airway reopening, lung epithelial cells were grown on a thin flexible PDMS membrane, which allowed additional stretching of the cell layer<sup>95</sup>. This approach revealed that the combination of fluid mechanical stress through propagating liquid plugs and solid mechanical stress through cyclic stretching further increased cell death, whereas surfactant-enriched growth medium had a protective effect.

Moreover, an endothelial-epithelial co-culture chip based on a stretchable and porous PDMS membrane, has been developed<sup>62</sup>. A layer of alveolar epithelial cells was cultivated on top of the porous membrane, whereas a layer of endothelial cells was cultivated on the other side. This approach allowed resembling several organ-level functions of the lung. Introducing an air-liquid interface at the apical membrane of the alveolar cells increased the TEER and reduced albumin transport across barrier, thus improving the differentiation status of the barrier. TNF- $\alpha$  stimulation activated the endothelium and induced adhesion of neutrophils to the activated endothelial cells. The neutrophils subsequently transmigrated through the capillary-alveolar barrier via the membrane pores. Application of the bacterium *Escherichia coli* to the alveolar cells could also induce neutrophil adhesion, transmigration, and clearance of the bacteria by neutrophils, thus mimicking the innate cellular response to bacterial infection. Interestingly, silica nanoparticles likewise activated the underlying endothelium, and breathing motions increased the inflammatory response as well as the absorption of nanoparticles.

## 5 Conclusions and future directions

Microfluidic devices have enabled to reconstitute important aspects of epithelial physiology by precisely resembling the *in vivo* microenvironment of epithelial cell layers. A particularly successful approach was to devise microfluidic designs that allow to culture epithelial cell layers with supporting cell layers underneath. These multi-layer structures led to improved apico-basal polarisation and tightness of the epithelial barriers<sup>40, 62, 80</sup>. However, epithelial cell layers exhibit a much more complex organisation *in vivo*. In particular, most epithelia

consist of many specialised cell types that fulfil distinct functions. The different cell types show a well-controlled organisation within the plane of the cell layer. A remaining challenge is to reproduce such planarly structured epithelial cell layers on-chip.

An intriguing observation is that on-chip stimulation of Caco-2 cells with fluid flow and cyclic stretching caused spontaneous self-organised differentiation into specialised cell types of the intestine, which also assumed proper planar organisation<sup>64</sup>. This suggests that specific cues might be sufficient to trigger self-organised differentiation and planar structuring in other cell lines. Because of their ability to subject cell layers to multiple well-controlled cues, microfluidic biochips are ideally suited to identify more examples of self-organised differentiation and planar structuring in epithelial models.

Even in cases in which self-organised planar patterning might not occur spontaneously, microfluidic models could be combined with approaches to control the local cell environment in order to generate confined regions in which cells are stimulated to undergo further differentiation. In particular, local engineering of differentiation-relevant environmental parameters is a promising approach to produce epithelia that comprise a natural composition of cell types directly from stem cells. Multiple tools to locally adjust microenvironments have already been developed and await their integration into microfluidic models of epithelia. This includes tools that allow generating local variations of substrate properties, for example patterning of ECM-components or other immobilised molecules that influence cell differentiation<sup>105–107</sup>, or local control of the substrate stiffness<sup>105, 108</sup>. Furthermore, several microfluidic methods exist to generate gradients of soluble molecules within the cell culture medium<sup>109–111</sup>. This could be used to locally adjust the concentration of soluble factors influencing cell differentiation as well as to resemble morphogen gradients in order to resemble aspects of planar cell polarity.

However, most cell lines or primary cells have lost their capabilities to undergo further differentiation. In such cases, planar structuring of epithelia could be achieved by seeding different cell types in defined intercalating patterns within microfluidic biochips. To this end, a plethora of methods to pattern cells is available<sup>111, 112</sup>.

Taken together, by controlling the planar organisation of epithelia, microfluidic models could be engineered that much closer resemble all *in vivo* functions of epithelia. This might, for example, enable to build secretory epithelia or whole glands that secrete fluids with a physiologically correct composition.

In addition to their transport functions, epithelial cell layers have several other essential functions. For example, epithelia are an important line of defence that prevents the intrusion of pathogens. However, several bacteria have evolved strategies to overcome epithelial barriers by e.g. hijacking trans-cellular transport processes or compromising tight junctions<sup>113, 114</sup>. Thus, microfluidic models of epithelia could provide powerful approaches to study bacterial intrusion.

The unique advantage of microfluidic approaches lies in the possibility to directly integrate analytical tools that enable to measure biologically relevant parameters. Many analytical tools have been developed and integrated in microfluidic models for epithelia, as described

in section 4 of this review, and many more tools will be made available in this rapidly developing field. However, the analytical tools are usually integrated in a customised way. This can hamper a more widespread use of microfluidic models of epithelia, especially in biology labs, because such designs typically require homemade accessories and expert knowledge to operate the tools. This could be overcome by designing a modular microfluidic system of standardised analytical components, especially for tools that probe molecules in the cell supernatant (e.g. fluorescent readout, mass spectrometry, HPLC, immunoassays...). An interesting option would be to design small microfluidic chips, each performing a distinct analytical readout, which can be connected to the main cell culture chip via short tubing. This will require the development of standardised connection interfaces<sup>115</sup>. Such modular systems would enable to routinely monitor multiple different readouts in parallel during experiments with epithelial cell layers. This would allow more unbiased experimental approaches, because the chance to miss unexpected effects is drastically minimised. Another interesting perspective of standardised components is to connect different epithelial models, each resembling the function of a specific organ. This would enable to build models of whole organisms, which offers novel possibilities to study the effects of drugs or toxins in artificial systems<sup>116–120</sup>.

## Acknowledgements

This work was supported by the Excellence Initiative of the German Research Foundation (EXC 294) and by a starting grant of the European Research Council (Programme "Ideas" - call identifier: ERC-2011-StG 282105) to WR. Research in ERB's lab was supported by NIH grants and funds from the Research to Prevent Blindness and Dyson foundations.

## References

- Rodriguez-Boulan E, Kreitzer G, Musch A. *Nat Rev Mol Cell Bio.* 2005; 6:233–247. [PubMed: 15738988]
- Tanos B, Rodriguez-Boulan E. *Oncogene.* 2008; 27:6939–6957. [PubMed: 19029936]
- Muller T, Hess MW, Schiefermeier N, Pfaller K, Ebner HL, Heinz-Erian P, Ponstingl H, Partsch J, Rollinghoff B, Kohler H, Berger T, Lenhartz H, Schlenck B, Houwen RJ, Taylor CJ, Zoller H, Lechner S, Goulet O, Utermann G, Ruummele FM, Huber LA, Janecke AR. *Nat Genet.* 2008; 40:1163–1165. [PubMed: 18724368]
- Sato T, Mushiaki S, Kato Y, Sato K, Sato M, Takeda N, Ozono K, Miki K, Kubo Y, Tsuji A, Harada R, Harada A. *Nature.* 2007; 448:366–369. [PubMed: 17597763]
- Keiser M, Alfalah M, Propsting MJ, Castelletti D, Naim HY. *J Biol Chem.* 2006; 281:14393–14399. [PubMed: 16543230]
- Bertrand CA, Frizzell RA. *Am J Physiol-Cell Ph.* 2003; 285:C1–C18.
- Fliegau M, Benzing T, Omran H. *Nat Rev Mol Cell Bio.* 2007; 8:880–893. [PubMed: 17955020]
- Boehlke C, Kotsis F, Patel V, Braeg S, Voelker H, Bredt S, Beyer T, Janusch H, Hamann C, Godel M, Muller K, Herbst M, Hornung M, Doerken M, Kottgen M, Nitschke R, Igarashi P, Walz G, Kuehn EW. *Nat Cell Biol.* 2010; 12:1115–U1126. [PubMed: 20972424]
- Harris PC, Torres VE. *Annu Rev Med.* 2009; 60:321–337. [PubMed: 18947299]
- Chuang JZ, Sung CH. *J Cell Biol.* 1998; 142:1245–1256. [PubMed: 9732285]
- Sung CH, Tai SW. *Int Rev Cytol.* 2000; 195:215–267. [PubMed: 10603577]
- Zaghloul NA, Katsanis N. *J Clin Invest.* 2009; 119:428–437. [PubMed: 19252258]
- Daugherty AL, Mrsny RJ. *Pharm Sci Technolo Today.* 1999; 4:144–151. [PubMed: 10322371]
- Johnson PH, Frank D, Costantino HR. *Drug discovery today.* 2008; 13:261–267. [PubMed: 18342803]

15. Pardridge WM. *NeuroRx*. 2005; 2:3–14. [PubMed: 15717053]
16. Bryant DM, Mostov KE. *Nat Rev Mol Cell Bio*. 2008; 9:887–901. [PubMed: 18946477]
17. O'Brien LE, Zegers MMP, Mostov KE. *Nat Rev Mol Cell Bio*. 2002; 3:531–537. [PubMed: 12094219]
18. Debnath J, Brugge JS. *Nat Rev Cancer*. 2005; 5:675–688. [PubMed: 16148884]
19. Pazour GJ, Witman GB. *Curr Opin Cell Biol*. 2003; 15:105–110. [PubMed: 12517711]
20. Singla V, Reiter JF. *Science*. 2006; 313:629–633. [PubMed: 16888132]
21. Bazzoni G. *Thromb Haemostasis*. 2006; 95:36–42. [PubMed: 16543959]
22. Wolburg H, Lippoldt A. *Vasc Pharmacol*. 2002; 38:323–337.
23. Mellman I, Nelson WJ. *Nat Rev Mol Cell Biol*. 2008; 9:833–845. [PubMed: 18946473]
24. Martin-Belmonte F, Perez-Moreno M. *Nature reviews. Cancer*. 2012; 12:23–38.
25. Simons M, Mlodzik M. *Annu Rev Genet*. 2008; 42:517–540. [PubMed: 18710302]
26. Vladar EK, Bayly RD, Sangoram AM, Scott MP, Axelrod JD. *Curr Biol*. 2012; 22:2203–2212. [PubMed: 23122850]
27. Lawrence PA, Struhl G, Casal J. *Nat Rev Genet*. 2007; 8:555–563. [PubMed: 17563758]
28. McDonald JC, Whitesides GM. *Accounts Chem Res*. 2002; 35:491–499.
29. Melin J, Quake SR. *Annu Rev Bioph Biom*. 2007; 36:213–231.
30. Sia SK, Whitesides GM. *Electrophoresis*. 2003; 24:3563–3576. [PubMed: 14613181]
31. Berthier E, Young EWK, Beebe D. *Lab Chip*. 2012; 12:1224–1237. [PubMed: 22318426]
32. Kotsis F, Nitschke R, Doerken M, Walz G, Kuehn EW. *Pflug Arch Eur J Phy*. 2008; 456:1025–1035.
33. Rydholm S, Frisk T, Kowalewski JM, Svahn HA, Stemme G, Brismar H. *Biomed Microdevices*. 2008; 10:555–560. [PubMed: 18236160]
34. Tkachenko E, Gutierrez E, Saikin SK, Fogelstrand P, Kim C, Groisman A, Ginsberg MH. *Biology open*. 2013; 2:1007–1012. [PubMed: 24167710]
35. van der Meer AD, Poot AA, Feijen J, Vermes I. *Biomicrofluidics*. 2010; 4
36. Frohlich EM, Zhang X, Charest JL. *Integr Biol (Camb)*. 2012; 4:75–83. [PubMed: 22139064]
37. Choi JS, Piao Y, Seo TS. *Bioproc Biosyst Eng*. 2013; 36:1871–1878.
38. Fiddes LK, Raz N, Srigunapalan S, Tumarkan E, Simmons CA, Wheeler AR, Kumacheva E. *Biomaterials*. 2010; 31:3459–3464. [PubMed: 20167361]
39. Ramadan Q, Jafarpoorchehab H, Huang CB, Silacci P, Carrara S, Koklu G, Ghaye J, Ramsden J, Ruffert C, Vergeres G, Gijs MAM. *Lab Chip*. 2013; 13:196–203. [PubMed: 23184124]
40. Puleo CM, Ambrose WM, Takezawa T, Elisseeff J, Wang TH. *Lab Chip*. 2009; 9:3221–3227. [PubMed: 19865728]
41. Desrousseaux C, Prot JM, Dufresne M, Paullier P, Leclerc E. *Sensor Actuat B-Chem*. 2012; 174:465–472.
42. Ould-Dris A, Paullier P, Griscom L, Legallais C, Leclerc E. *J Membrane Sci*. 2010; 352:116–125.
43. Ramello C, Paullier P, Ould-Dris A, Monge M, Legallais C, Leclerc E. *Toxicol in Vitro*. 2011; 25:1123–1131. [PubMed: 21457771]
44. Jang KJ, Cho HS, Kang DH, Bae WG, Kwon TH, Suh KY. *Integr Biol-Uk*. 2011; 3:134–141.
45. Jang KJ, Mehr AP, Hamilton GA, McPartlin LA, Chung SY, Suh KY, Ingber DE. *Integr Biol-Uk*. 2013; 5:1119–1129.
46. Jang KJ, Suh KY. *Lab Chip*. 2010; 10:36–42. [PubMed: 20024048]
47. Kimura H, Yamamoto T, Sakai H, Sakai Y, Fujii T. *Lab Chip*. 2008; 8:741–746. [PubMed: 18432344]
48. Epshteyn AA, Maher S, Taylor AJ, Holton AB, Borenstein JT, Cuiffi JD. *Biomicrofluidics*. 2011; 5
49. Chueh BH, Huh D, Kyrtos CR, Houssin T, Futai N, Takayama S. *Anal Chem*. 2007; 79:3504–3508. [PubMed: 17388566]
50. Ferrell N, Desai RR, Fleischman AJ, Roy S, Humes HD, Fissell WH. *Biotechnol Bioeng*. 2010; 107:707–716. [PubMed: 20552673]

51. Hediger S, Sayah A, Horisberger JD, Gijs MAM. *Biosens Bioelectron.* 2001; 16:689–694. [PubMed: 11679245]
52. Atsuta K, Noji H, Takeuchi S. *Lab Chip.* 2004; 4:333–336. [PubMed: 15269800]
53. Huh D, Kim HJ, Fraser JP, Shea DE, Khan M, Bahinski A, Hamilton GA, Ingber DE. *Nat Protoc.* 2013; 8:2135–2157. [PubMed: 24113786]
54. Jackman RJ, Duffy DC, Cherniavskaya O, Whitesides GM. *Langmuir.* 1999; 15:2973–2984.
55. Li X, Klemic KG, Reed MA, Sigworth FJ. *Nano Lett.* 2006; 6:815–819. [PubMed: 16608289]
56. Luo Y, Zare RN. *Lab Chip.* 2008; 8:1688–1694. [PubMed: 18813392]
57. Wei H, Chueh B-h, Wu H, Hall EW, Li C-w, Schirhagl R, Lin J-M, Zare RN. *Lab Chip.* 2011; 11:238–245. [PubMed: 21057685]
58. Duffy DC, McDonald JC, Schueller OJ, Whitesides GM. *Anal Chem.* 1998; 70:4974–4984. [PubMed: 21644679]
59. Haubert K, Drier T, Beebe D. *Lab Chip.* 2006; 6:1548–1549. [PubMed: 17203160]
60. Unger MA, Chou HP, Thorsen T, Scherer A, Quake SR. *Science.* 2000; 288:113–116. [PubMed: 10753110]
61. Whitesides GM, Tang SKY. *P Soc Photo-Opt Ins.* 2006; 6329:U61–U73.
62. Huh D, Matthews BD, Mammoto A, Montoya-Zavala M, Hsin HY, Ingber DE. *Science.* 2010; 328:1662–1668. [PubMed: 20576885]
63. Kim HJ, Huh D, Hamilton G, Ingber DE. *Lab Chip.* 2012; 12:2165–2174. [PubMed: 22434367]
64. Kim HJ, Ingber DE. *Integr Biol-Uk.* 2013; 5:1130–1140.
65. Sun T, Swindle EJ, Collins JE, Holloway JA, Davies DE, Morgan H. *Lab Chip.* 2010; 10:1611–1617. [PubMed: 20379587]
66. Frohlich EM, Alonso JL, Borenstein JT, Zhang X, Arnaout MA, Charest JL. *Lab Chip.* 2013; 13:2311–2319. [PubMed: 23636129]
67. Esch MB, Sung JH, Yang J, Yu CH, Yu JJ, March JC, Shuler ML. *Biomed Microdevices.* 2012; 14:895–906. [PubMed: 22847474]
68. Ng CP, Zhuang Y, Lin AWH, Teo JCM. *International Journal of Tissue Engineering.* 2012; 2013
69. Prabhakarandian B, Shen MC, Nichols JB, Mills IR, Sidoryk-Wegrzynowicz M, Aschner M, Pant K. *Lab Chip.* 2013; 13:1093–1101. [PubMed: 23344641]
70. Shao JB, Wu L, Wu JZ, Zheng YH, Zhao H, Jin QH, Zhao JL. *Lab Chip.* 2009; 9:3118–3125. [PubMed: 19823728]
71. Imura Y, Asano Y, Sato K, Yoshimura E. *Anal Sci.* 2009; 25:1403–1407. [PubMed: 20009325]
72. Thuenauer R, Juhasz K, Mayr R, Fruhwirth T, Lipp AM, Balogi Z, Sonnleitner A. *Lab Chip.* 2011; 11:3064–3071. [PubMed: 21814704]
73. Gao D, Liu HX, Lin JM, Wang YN, Jiang YY. *Lab Chip.* 2013; 13:978–985. [PubMed: 23340920]
74. Chen SYC, Hung PJ, Lee PJ. *Biomed Microdevices.* 2011; 13:753–758. [PubMed: 21556741]
75. Bersini S, Jeon J, Moretti M, Kamm R. *Drug Discovery Today.* in press.
76. Verhulsel M, Vignes Mv, Descroix Sp, Malaquin L, Vignjevic DM, Viovy J-L. *Biomaterials.* in press.
77. Wong KHK, Chan JM, Kamm RD, Tien J. *Annu Rev Biomed Eng.* 2012; 14:205–230. [PubMed: 22540941]
78. Young EWK. *Jala-J Lab Autom.* 2013; 18:427–436.
79. Douville NJ, Tung YC, Li R, Wang JD, El-Sayed MEH, Takayama S. *Anal Chem.* 2010; 82:2505–2511. [PubMed: 20178370]
80. Booth R, Kim H. *Lab Chip.* 2012; 12:1784–1792. [PubMed: 22422217]
81. Deborde S, Perret E, Gravotta D, Deora A, Salvarezza S, Schreiner R, Rodriguez-Boulan E. *Nature.* 2008; 452:719–U713. [PubMed: 18401403]
82. Leung LW, Contreras RG, Flores-Maldonado C, Cerejido M, Rodriguez-Boulan E. *Am J Physiol-Cell Ph.* 2003; 284:C1021–C1030.
83. Benson K, Cramer S, Galla H-J. *Fluids and Barriers of the CNS.* 2013; 10:5. [PubMed: 23305242]

84. Griep LM, Wolbers F, de Wagenaar B, ter Braak PM, Weksler BB, Romero IA, Couraud PO, Vermes I, van der Meer AD, van den Berg A. *Biomed Microdevices*. 2013; 15:145–150. [PubMed: 22955726]
85. Wegener J, Abrams D, Willenbrink W, Galla HJ, Janshoff A. *Biotechniques*. 2004; 37:590. → [PubMed: 15517971]
86. Vogel PA, Halpin ST, Martin RS, Spence DM. *Anal Chem*. 2011; 83:4296–4301. [PubMed: 21513343]
87. Wu NZ, Baldwin AL. *Am J Physiol*. 1992; 262:H1238–H1247. [PubMed: 1566906]
88. Abbott NJ, Ronnback L, Hansson E. *Nat Rev Neurosci*. 2006; 7:41–53. [PubMed: 16371949]
89. Verkman AS. *Annu Rev Med*. 2012; 63:303–316. [PubMed: 22248325]
90. Young EWK, Watson MWL, Srigunapalan S, Wheeler AR, Simmons CA. *Anal Chem*. 2010; 82:808–816. [PubMed: 20050596]
91. Su T, Bryant DM, Luton F, Verges M, Ulrich SM, Hansen KC, Datta A, Eastburn DJ, Burlingame AL, Shokat KM, Mostov KE. *Nat Cell Biol*. 2010; 12:1143–U1160. [PubMed: 21037565]
92. Praetorius HA, Spring KR. *J Membrane Biol*. 2001; 184:71–79. [PubMed: 11687880]
93. Praetorius HA, Spring KR. *J Membrane Biol*. 2003; 191:69–76. [PubMed: 12532278]
94. Rahimzadeh J, Meng FJ, Sachs F, Wang JB, Verma D, Hua SZ. *Am J Physiol-Cell Ph*. 2011; 301:C646–C652.
95. Douville NJ, Zamankhan P, Tung YC, Li R, Vaughan BL, Tai CF, White J, Christensen PJ, Grotberg JB, Takayama S. *Lab Chip*. 2011; 11:609–619. [PubMed: 21152526]
96. Schmoranzler J, Goulian M, Axelrod D, Simon SM. *The Journal of cell biology*. 2000; 149:23–32. [PubMed: 10747084]
97. Axelrod D. *Traffic*. 2001; 2:764–774. [PubMed: 11733042]
98. Jaiswal JK, Simon SM. *Nat Chem Biol*. 2007; 3:92–98. [PubMed: 17235347]
99. Thuenauer R, Hsu YC, Carvajal-Gonzalez JM, Deborde S, Chuang JZ, Römer W, Sonnleitner A, Rodriguez-Boulan E, Sung CH. in press.
100. Huh D, Fujioka H, Tung YC, Futai N, Paine R, Grotberg JB, Takayama S. *P Natl Acad Sci USA*. 2007; 104:18886–18891.
101. Long C, Finch C, Esch M, Anderson W, Shuler M, Hickman J. *Ann Biomed Eng*. 2012; 40:1255–1267. [PubMed: 22271245]
102. Nalayanda DD, Puleo C, Fulton WB, Sharpe LM, Wang TH, Abdullah F. *Biomed Microdevices*. 2009; 11:1081–1089. [PubMed: 19484389]
103. Tavana H, Zamankhan P, Christensen PJ, Grotberg JB, Takayama S. *Biomed Microdevices*. 2011; 13:731–742. [PubMed: 21487664]
104. Tavana H, Kuo CH, Lee QY, Mosadegh B, Huh D, Christensen PJ, Grotberg JB, Takayama S. *Langmuir*. 2010; 26:3744–3752. [PubMed: 20017471]
105. Kim DH, Wong PK, Park J, Levchenko A, Sun Y. *Annual Review of Biomedical Engineering*. 2009; 11:203–233.
106. Kobel S, Lutolf MP. *Curr Opin Biotechnol*. 2011; 22:690–697. [PubMed: 21821410]
107. Yap FL, Zhang Y. *Biosens Bioelectron*. 2007; 22:775–788. [PubMed: 16621507]
108. Li Y, Huang G, Zhang X, Wang L, Du Y, Lu TJ, Xu F. *Biotechnology advances*. in press.
109. Keenan TM, Folch A. *Lab Chip*. 2008; 8:34–57. [PubMed: 18094760]
110. Kim S, Kim HJ, Jeon NL. *Integr Biol-Uk*. 2010; 2:584–603.
111. Tehranirokh M, Kouzani AZ, Francis PS, Kanwar JR. *Biomicrofluidics*. 2013; 7:51502. [PubMed: 24273628]
112. Kane RS, Takayama S, Ostuni E, Ingber DE, Whitesides GM. *Biomaterials*. 1999; 20:2363–2376. [PubMed: 10614942]
113. Engel J, Eran Y. *Frontiers in microbiology*. 2011; 2
114. Kazmierczak BI, Mostov K, Engel JN. *Annu Rev Microbiol*. 2001; 55:407–435. [PubMed: 11544362]
115. van Heeren H. *Lab Chip*. 2012; 12:1022–1025. [PubMed: 22298257]
116. Huh D, Hamilton GA, Ingber DE. *Trends Cell Biol*. 2011; 21:745–754. [PubMed: 22033488]



117. Huh D, Torisawa YS, Hamilton GA, Kim HJ, Ingber DE. *Lab Chip*. 2012; 12:2156–2164. [PubMed: 22555377]
118. Moraes C, Mehta G, Leshner-Perez SC, Takayama S. *Ann Biomed Eng*. 2012; 40:1211–1227. [PubMed: 22065201]
119. Shuler ML, Esch MB. *Pure Appl Chem*. 2010; 82:1635–1645.
120. Sung JH, Esch MB, Prot JM, Long CJ, Smith A, Hickman JJ, Shuler ML. *Lab Chip*. 2013; 13:1201–1212. [PubMed: 23388858]

## Biographies



Roland Thuenauer is a post-doctoral researcher in the Centre of Biological Signalling Studies (BIOSS) at the University of Freiburg, Germany. He studied physics at the Technical University of Graz, Austria. During his Ph.D. studies at the Johannes Kepler University of Linz, Austria, he developed novel microfluidic platforms that allow to image vesicular trafficking in live polarised epithelia. Afterwards he joined the research group of Prof. Winfried Römer, where he currently investigates the interaction of bacterial lectins with polarised epithelial cells via traditional and microfluidic approaches.



Enrique Rodriguez-Boulan is a Professor of Cell Biology and Neurosciences at the Dyson Institute of Vision Research, Weill Cornell Medical College, New York. His laboratory is interested in epithelial and retinal cell biology. With M. Cereijido and D. Sabatini, he introduced the MDCK model, which is now the best-studied epithelial cell model. His group has elucidated many fundamental epithelial polarity mechanisms. His retinal research currently focuses on building an in vitro model of the outer retina and on developing drugs to treat Age Related Macular Degeneration, a disease in which photoreceptor cell death is caused by disruption of their main support cell, the retinal pigment epithelium.



Winfried Römer is Professor at the University of Freiburg, Germany, since April 2011 and heads the research group “Synthetic Biology of Signalling Processes”. His research focuses on host-pathogen interactions; in particular, he is interested in understanding the physiological role of bacterial lectins on mammalian cells by using analytical and synthetic

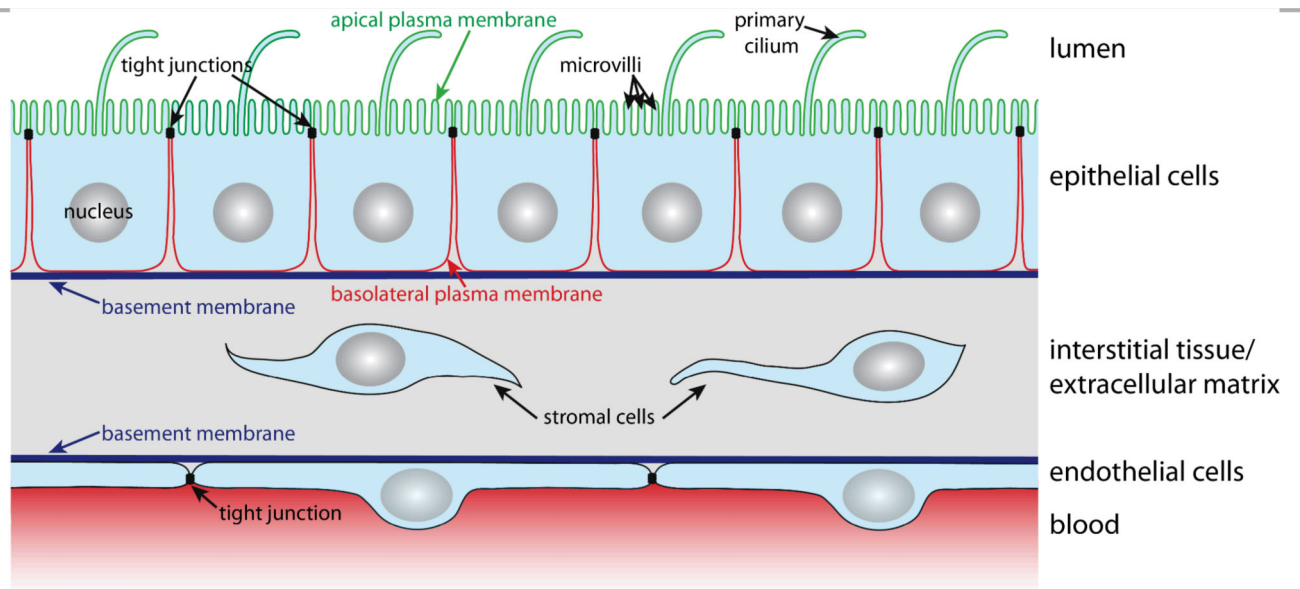
approaches. He studied chemistry and biology at the University of Regensburg, Germany. During his Ph.D. studies he developed novel pore-suspending membrane systems and successfully reconstituted membrane proteins. As post-doctoral fellow and research scientist at CNRS and Curie Institute in Paris, France, he investigated the cellular uptake of toxins and viruses.

Author Manuscript

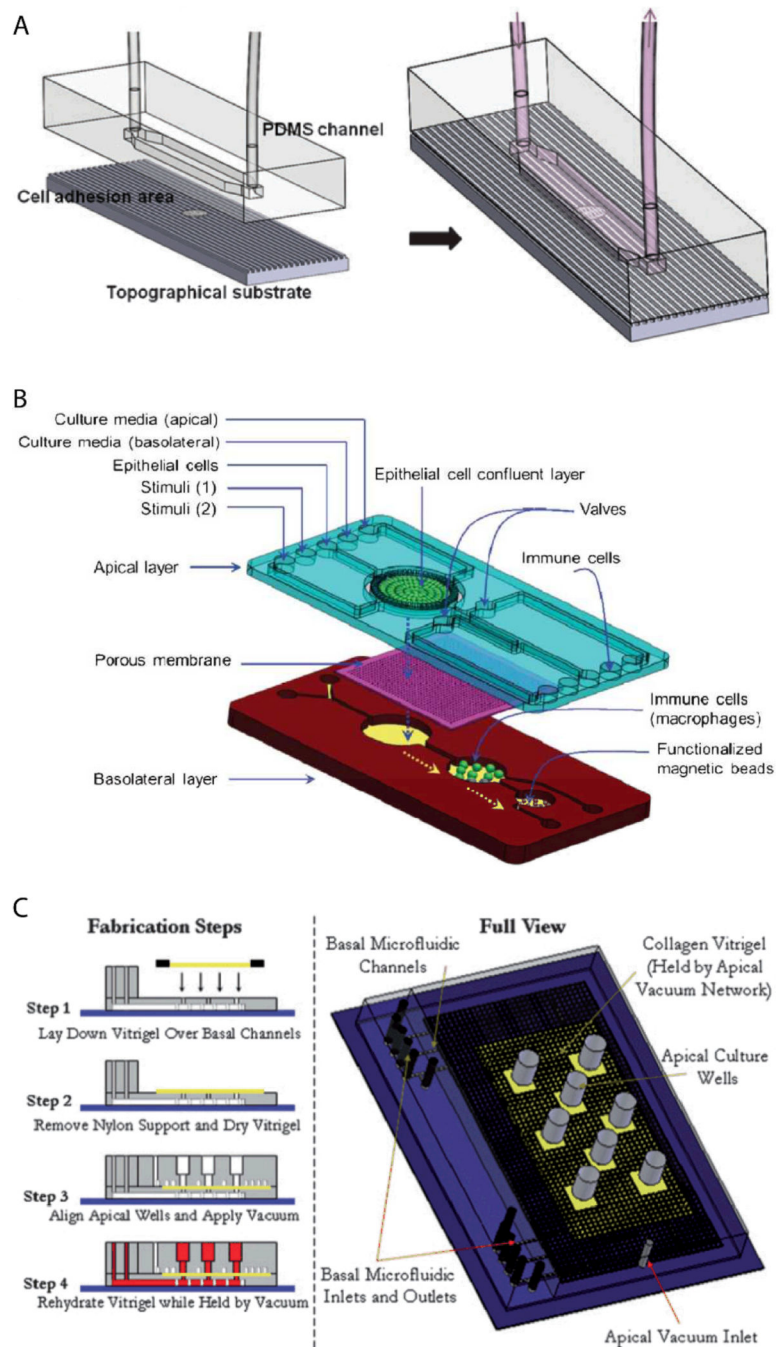
Author Manuscript

Author Manuscript

Author Manuscript



**Figure 1. The *in vivo* environment and architecture of epithelial and endothelial cell monolayers** Polarised epithelial cells possess apical and basolateral plasma membrane domains that are separated by tight junctions. The apical plasma membrane (green) faces the lumen and contains microvilli and the primary cilium. The basolateral plasma membrane (red) contacts other cells and the extracellular matrix. The essential structures of the extracellular matrix are the basement membrane and the interstitial tissue that consists of connective tissue and stromal cells. Endothelial cells line blood vessels and exhibit a similar architecture as epithelial cells in which also tight junctions regulate the passage of substances between neighbouring cells.



**Figure 2. Examples of microfluidic biochip architectures for culturing epithelial cell layers** (A) Simple microfluidic biochip design based on a single channel that additionally incorporates a cell growth substrate with controlled surface topography. Reproduced from ref. 36 with permission.(B) Microfluidic biochip design based on an integrated porous membrane as growth substrate for the epithelial cell layer. The chip constitutes a miniaturized model of the human gastrointestinal tract, which can be used to monitor immuno-modulatory effects of food<sup>39</sup>. To this end, the chip contains additional chambers for growth of immune cells and performing an immunomagnetic assay. This assay is based on

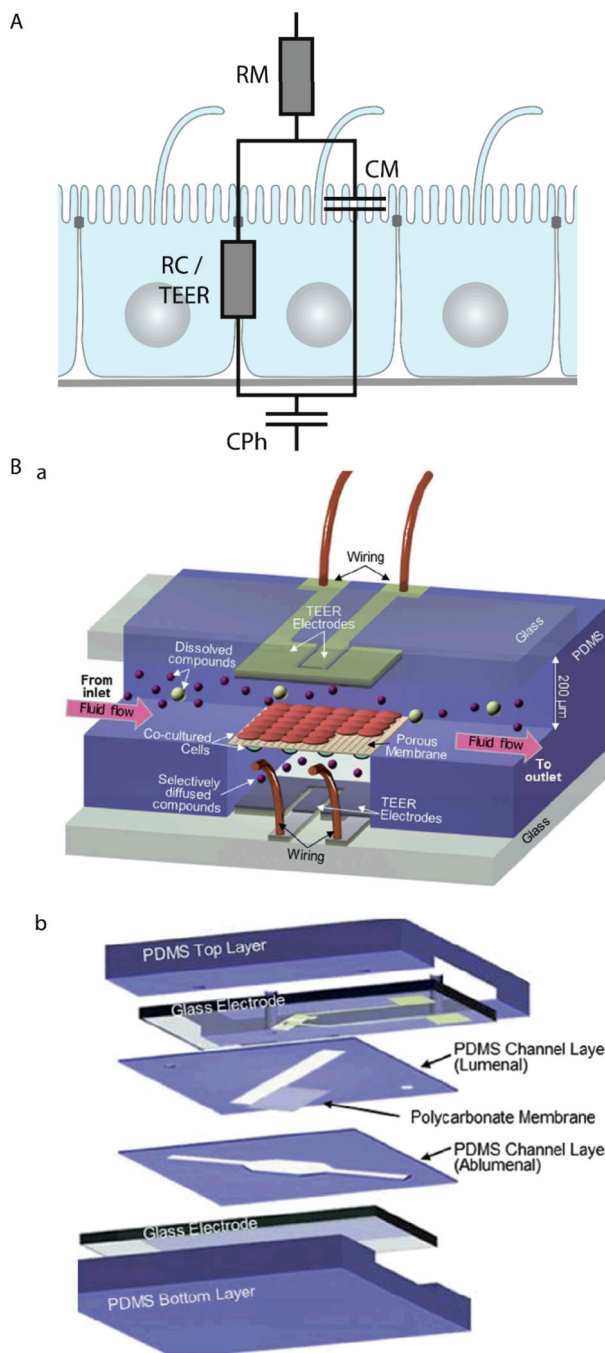
antibody-coated magnetic beads and allows detecting the secretion of pro-inflammatory cytokines by the immune cells. Reproduced from ref. 39 with permission.(C) Microfluidic biochip design with an integrated collagen vitrigel layer as growth substrate for an epithelial cell layer. The device enables to generate and culture corneal microtissue patches<sup>40</sup>. The collagen vitrigel layer is first placed on a PDMS structure containing the basal microfluidic channel system (step 1). After removal of nylon supports and drying of the collagen vitrigel (step 2), the PDMS structure containing the apical channel system is placed on top and held in place by vacuum (step 3). In order to prepare the chip for cell culture, the collagen vitrigel layer is rehydrated again (step 4). Reproduced from ref. 40 with permission.

Author Manuscript

Author Manuscript

Author Manuscript

Author Manuscript



**Figure 3. Electrical characterisation of epithelial cell layers in microfluidic biochips**  
 (A) Equivalent circuit diagram of an epithelial monolayer. The constant phase element CPh accounts for the double layer capacitance of the measurement electrodes, the resistor RM accounts for the resistance of the medium, the resistor RC accounts for the resistance of the paracellular route, which is equivalent to the TEER, and the capacitor CM accounts for the capacitance of the plasma membranes. (B) Example for the integration of electrodes to measure TEER across an endothelial cell layer in a microfluidic biochip. a. Three-dimensional schematic view of the biochip. b. Components of the biochip. The biochip

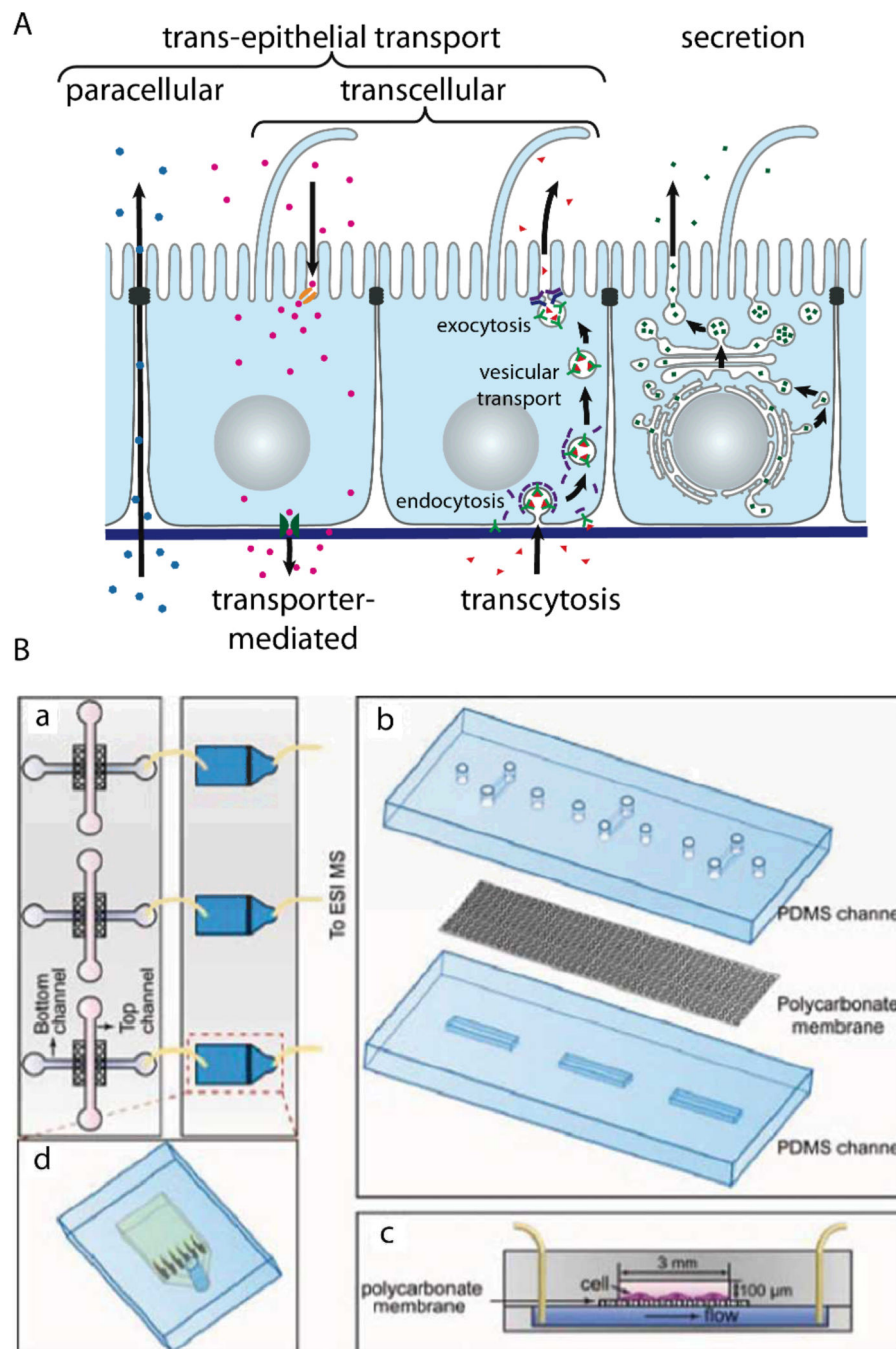
contains two perpendicular flow channels that are separated by a porous polycarbonate membrane carrying an endothelial cell layer on one side and co-cultured astrocytes, which positively influence the quality of the endothelium, on the other side. The TEER electrodes are thin-film AgCl electrodes that were deposited on glass slides. Reproduced from ref. 80 with permission.

Author Manuscript

Author Manuscript

Author Manuscript

Author Manuscript

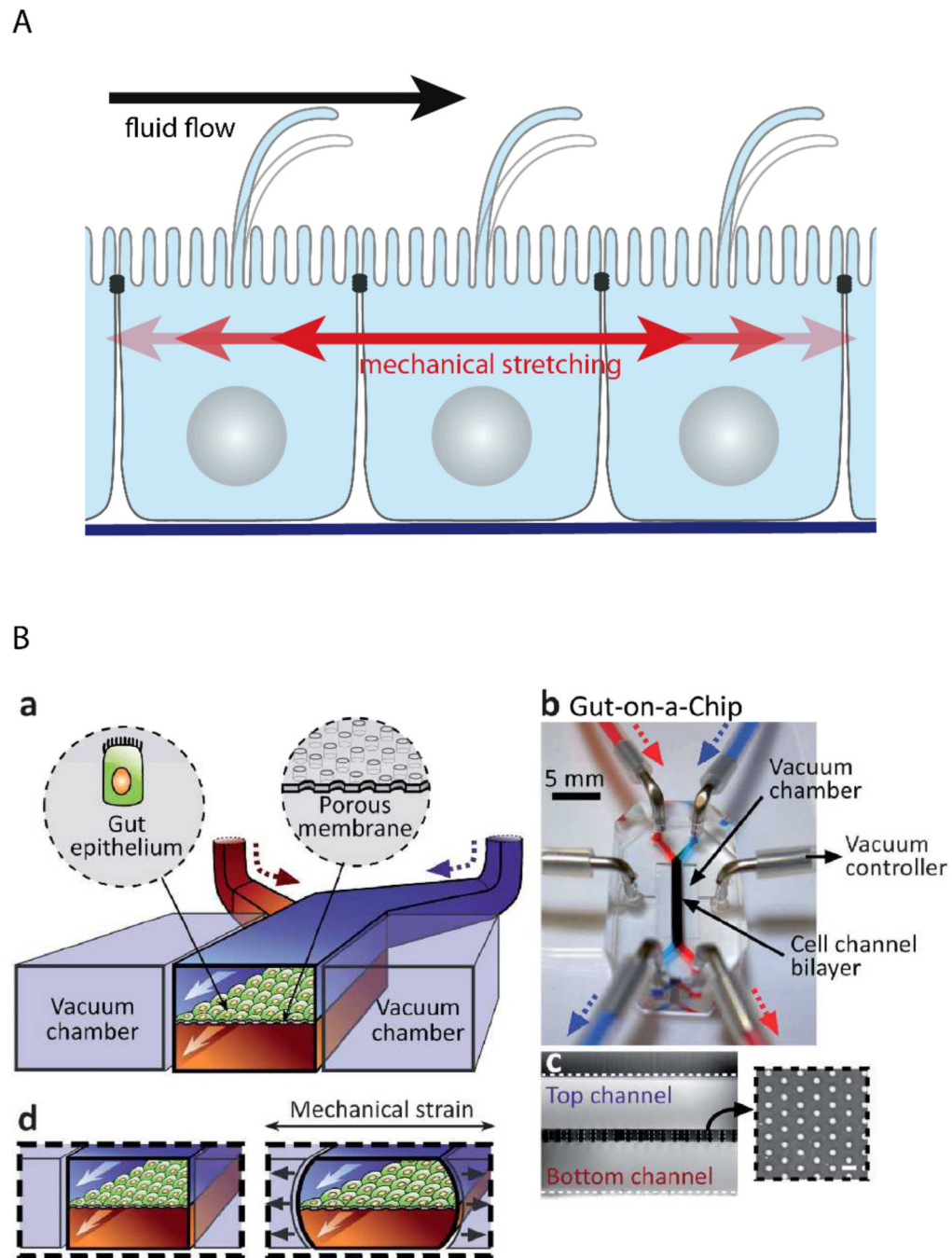


**Figure 4. Characterising trans-epithelial transport in microfluidic biochips**

(A) Schematic drawing showing trans-epithelial and secretory pathways. Trans-epithelial transport occurs via paracellular and transcellular routes. Transcellular transport is possible via transporter-mediated pathways (e.g. in the case of absorption or reabsorption of nutrients) or via transcytosis. In transcytosis, molecules bind to specific receptors, which are subsequently endocytosed. After vesicular transport through intracellular compartments, the molecules are released on the other side by exocytosis<sup>91</sup>. (B) Microfluidic biochip design to carry out mass spectrometry-based analysis of substances that are transported across an



epithelial barrier. a. The chip consists of two parts: In the first part (left) epithelial cells are cultured on a porous membrane. The second part (right) contains microfluidic solid-phase extraction columns for sample pre-treatment that are connected to a mass spectrometer. b. Components of the cell culture chip. c. Schematic cross-section through the cell culture chip. d. Schematic outline of the sample pre-treatment chip. Reproduced from ref. 73 with permission.



**Figure 5. Microfluidic biochip approaches to stimulate epithelial cell layers with fluid flow and mechanical stretching**

(A) Schematic drawing showing how fluid flow and mechanical stretching affects epithelial cell layers. (B) Microfluidic biochip to perform mechanical stretching of an epithelium grown on a flexible porous membrane. a. Outline of the biochip. The chip contains a central chamber that is separated by a porous membrane. Next to the central chamber two vacuum chambers are located, which enable mechanical stretching of the porous membrane. b. Photograph of the biochip. c. Cross-sectional view of the chip that shows the porous membrane and the top and bottom channel. The insert shows a lateral view of the porous

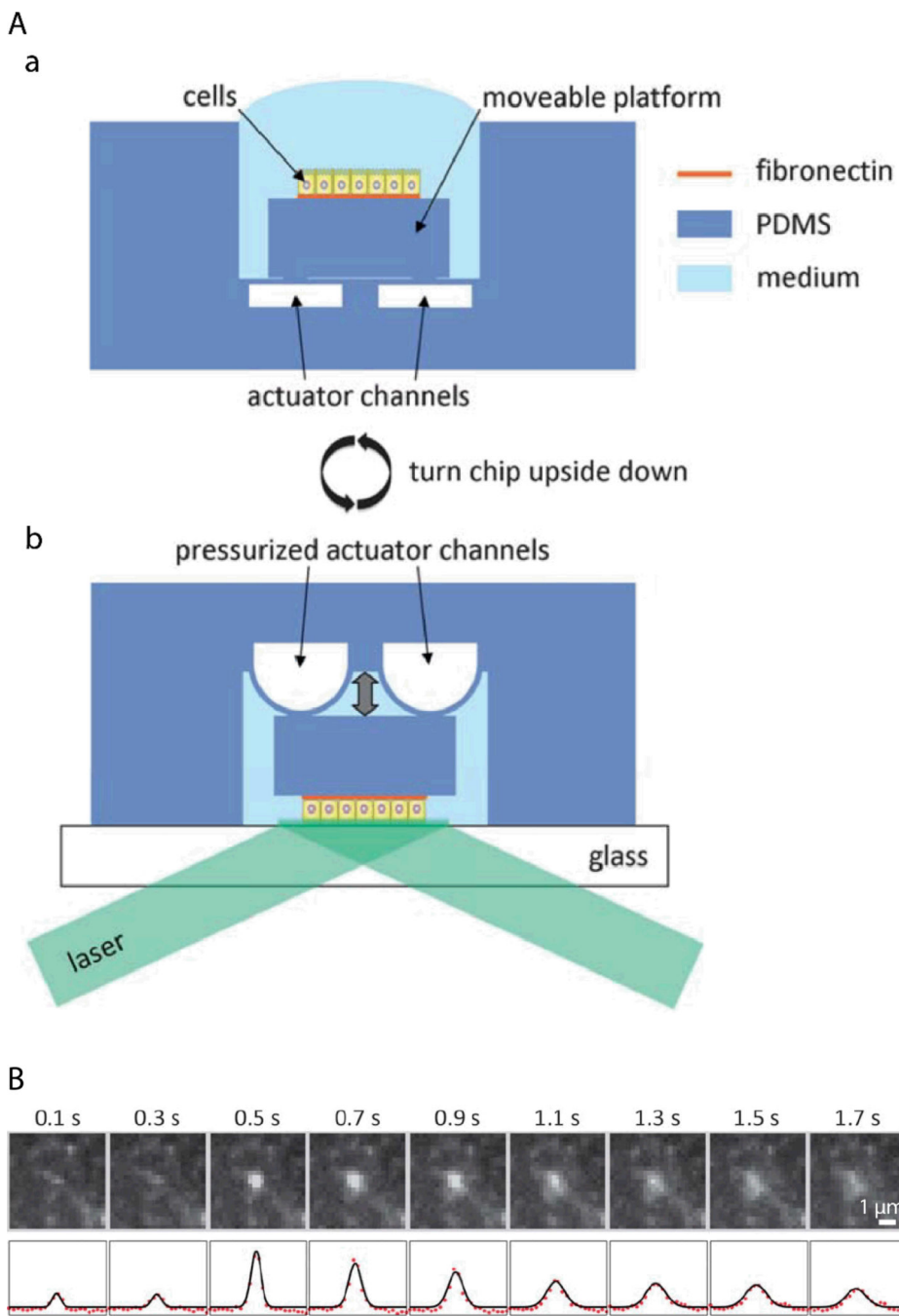
membrane. d. Functional principle of mechanical stretching. When vacuum is applied to the two vacuum chambers, the flexible porous membrane carrying the epithelial cell layer is stretched. Reproduced from ref. 63 with permission.

Author Manuscript

Author Manuscript

Author Manuscript

Author Manuscript



**Figure 6. Microfluidic biochips enable novel microscopy techniques in order to image vesicular membrane trafficking in polarised epithelial cell layers**

(A) Microfluidic biochip to perform TIRF microscopy at the apical plasma membrane of polarised epithelial cells. a. The chip contains a moveable platform on which a polarised epithelial cell layer can be cultivated on a fibronectin-coated area. The moveable platform is attached to the central part of a thin flexible PDMS membrane covering the actuator channels. b. For performing apical TIRF microscopy the chip is turned upside down and placed on a glass cover slip on a TIRF microscope. By applying pressure to the actuator channels, the platform carrying the cells can be precisely approached to the glass cover slip.

In this way the apical plasma membrane of the cells is positioned within the evanescent wave of a totally internally reflected laser beam in order to carry out apical TIRF microscopy. (B) Fusion of a vesicle bearing the apical marker protein GPI-GFP with the apical plasma membrane. Top row: Apical TIRF image sequence. Bottom row: Intensity profiles along a horizontal cross-section through the centre of the intensity peaks (red dots) and through a two-dimensional Gaussian fitted to the peaks (black line). Adapted from ref. 72 with permission.

Author Manuscript

Author Manuscript

Author Manuscript

Author Manuscript