

Published in final edited form as:

*Biochim Biophys Acta*. 2014 November ; 1843(11): 2796–2806. doi:10.1016/j.bbamcr.2014.07.019.

## Estrogen Receptor-alpha 36 Mediates the Anti-apoptotic Effect of Estradiol in Triple Negative Breast Cancer Cells via a Membrane-Associated Mechanism

Reyhaan A. Chaudhri<sup>a,b</sup>, Agreen Hadadi<sup>a</sup>, Kirill S. Lobachev<sup>a</sup>, Zvi Schwartz<sup>c</sup>, and Barbara D. Boyan<sup>b,c</sup>

<sup>a</sup>The School of Biology and the Petit Institute for Bioengineering and Biosciences, Georgia Institute of Technology, Atlanta, GA, USA

<sup>b</sup>Atlanta Clinical and Translational Science Institute, Emory University, Atlanta, GA, USA

<sup>c</sup>College of Engineering, Virginia Commonwealth University, Richmond, VA, USA

### Abstract

17 $\beta$ -estradiol can promote the growth and development of several estrogen receptor (ER)-negative breast cancers. The effects are rapid and non-genomic, suggesting a membrane-associated ER is involved. ER $\alpha$ 36 has been shown to mediate rapid, nongenomic, membrane-associated effects of 17 $\beta$ -estradiol in several cancer cell lines, including triple negative HCC38 breast cancer cells. Moreover, the effect is anti-apoptotic. The aim of this study was to determine if ER $\alpha$ 36 mediates this anti-apoptotic effect, and to elucidate the mechanism involved. Taxol was used to induce apoptosis in HCC38 cells, and the effect of 17 $\beta$ -estradiol pre-treatment was determined. Antibodies to ER $\alpha$ 36, signal pathway inhibitors, ER $\alpha$ 36 deletion mutants, and ER $\alpha$ 36-silencing were used prior to these treatments to determine the role of ER $\alpha$ 36 in these effects and to determine which signaling molecules were involved. We found that the anti-apoptotic effect of 17 $\beta$ -estradiol in HCC38 breast cancer cells is in fact mediated by membrane-associated ER $\alpha$ 36. We also showed that this signaling occurs through a pathway that requires PLD, LPA, and PI3K; Gas and calcium signaling may also be involved. In addition, dynamic palmitoylation is required for the membrane-associated effect of 17 $\beta$ -estradiol. Exon 9 of ER $\alpha$ 36, a unique exon to ER $\alpha$ 36 not found in other identified splice variants of ER $\alpha$  with previously unknown function, is necessary for these effects. This study provides a working model for a mechanism by which estradiol promotes anti-apoptosis through membrane-associated ER $\alpha$ 36, suggesting that ER $\alpha$ 36 may be a potential membrane target for drug design against breast cancer, particularly triple negative breast cancer.

© 2014 Elsevier B.V. All rights reserved.

Barbara D. Boyan, Dean, School of Engineering, Virginia Commonwealth University, 601 West Main Street, P.O. Box 843068, Richmond, Virginia, 23284-3068, USA; Tel.: 804-828-0190; Fax: 804-828-9866; bboyan@vcu.edu.

**Publisher's Disclaimer:** This is a PDF file of an unedited manuscript that has been accepted for publication. As a service to our customers we are providing this early version of the manuscript. The manuscript will undergo copyediting, typesetting, and review of the resulting proof before it is published in its final citable form. Please note that during the production process errors may be discovered which could affect the content, and all legal disclaimers that apply to the journal pertain.

## Keywords

estrogen; breast cancer; taxol; estrogen receptor-alpha 36; plasma membrane; anti-apoptosis

---

## 1. INTRODUCTION

Although the 5-year survival for patients diagnosed in the early stages of breast cancer exceeds 90%, survival in patients with distant metastasis drops below 25% indicating very poor prognosis for these individuals [1]. While an actual cure for breast cancer is elusive, novel approaches to diagnosis and treatment can help to reduce mortality and allow patients, specifically those with more advanced stage cancer, to live normal lives.

The progression of cancer is a dynamic process that begins with primary tumor growth, depending on cancer cell proliferation simultaneously with the ability of cancer cells to evade apoptosis [2]. In some cases, aggressive cancer cells can evade apoptosis even in the presence of radiotherapy and chemotherapeutic drugs that are used to target these cells and specifically induce apoptosis [3, 4]. Current approaches to treatment have evolved to combination therapy, usually beginning with surgery and/or targeted radiotherapy, followed by adjunctive chemotherapy [5–7]. Taxol, a commonly used chemotherapeutic drug, induces apoptosis in cells by inhibiting mitosis [8, 9]. Currently, taxol is synthetically prepared and various formulations and carriers are being developed to increase the effectiveness of the drug [10]. Moreover, the main problem with drugs such as taxol is that they do not only target cancer cells, but can also induce apoptosis in normal cells [11, 12]. This necessitates current approaches of targeted therapy, by which newer targets are being discovered that are either unique or highly upregulated in cancer cells.

Estrogen receptors (ERs) play a major role in classification, diagnosis, and treatment of breast cancer [13–15]. Patients who have hormone responsive or ER-positive tumors are expected to take the ER-antagonist tamoxifen continuously for 10 years following initial treatment [16]. We previously showed that tamoxifen could block the stimulatory effect of 17 $\beta$ -estradiol ( $E_2$ ) in not only ER-positive breast cancer cells but also ER-negative breast cancer cells [17]. Traditional inhibitors of ERs, such as ICI 182,780, and diethylstilbestrol, a potent synthetic agonist for ER $\alpha$ , did not block  $E_2$ -induced cell proliferation or protein kinase C (PKC) activity in the ER-negative cells, nor did traditional antibodies to ER $\alpha$  and ER $\beta$  [17].

Membrane-associated  $E_2$  signaling also elicits anti-apoptotic effects against taxol, leading to an aggressive cancer phenotype [3, 18]. We recently showed that ER $\alpha$ 36, an alternatively spliced variant to traditional ER $\alpha$ , is responsible for the membrane-mediated effect of  $E_2$  in breast cancer cells that promotes cell survivability [18, 19]. The mRNA of ER $\alpha$ 36 lacks the first exon found in traditional ER $\alpha$ , ER $\alpha$ 66, as well as exons 7 and 8 [20]. This results in a truncated form of ER $\alpha$  that does not contain the transcriptional activation domains AF1 or AF2 and a truncated ligandbinding domain, however, ER $\alpha$ 36 still exhibits ligand-dependent effects of  $E_2$  [20–22]. In addition, ER $\alpha$ 36 contains a novel exon at the C-terminus known as exon 9. This exon contains 27 amino acids of unknown function, but it is hypothesized to contain myristoylation or palmitoylation-specific sequences [20, 23], which would help to

explain any membrane-associated effects mediated by ER $\alpha$ 36. This study investigated a mechanism by which ER $\alpha$ 36 prevents taxol-induced apoptosis. We hypothesized that ligand-dependent activation of ER $\alpha$ 36 induces receptor-dependent inhibition of signaling cascades associated with anti-apoptosis.

## 2. MATERIALS AND METHODS

### 2.1 Reagents

Triple negative HCC38 human breast cancer cells, which we previously showed to also be negative for the ER $\alpha$  splice variants, ER $\alpha$ 66 and ER $\alpha$ 46, but positive for ER $\alpha$ 36 [18], and human embryonic kidney HEK293 cells were obtained from the American Type Culture Collection (ATCC, Manassas, VA). Roswell Park Memorial Institute 1640 medium (RPMI 1640) was purchased from Invitrogen (Grand Island, NY). Charcoal/dextran-filtered fetal bovine serum (FBS) was purchased from Gemini Bioproducts (Sacramento, CA). E<sub>2</sub> enantiomer (Ent- E<sub>2</sub>) was kindly provided as a gift from Dr. Douglas Covey (Washington University, St. Louis, MO) and has been described previously [24]. E<sub>2</sub>, E<sub>2</sub>-BSA, taxol, 2-hydroxymyristic acid (HMA), 2-bromohexadecanoic acid (2-bromopalmitate, 2-BP), and tunicamycin (Tm) were purchased from Sigma (St. Louis, MO). Cycloheximide (CHM), Wortmannin, D609, U73122, LY294002, thapsigargin, pertussis toxin (PTX), and cholera toxin (CTX) were purchased from EMD Chemicals (Gibbstown, NJ). VPC32183S and lysophosphatidic acid (LPA) were purchased from Avanti Polar Lipids (Alabaster, AL). Protein content of samples was measured using the Macro BCA reagent kit from Pierce/Thermo Scientific (Rockford, IL). Polyclonal ER $\alpha$ 36 antibodies against the unique C-terminal 27 amino acids were generated by Cell Applications Inc. (San Diego, CA). A monoclonal anti-ER $\alpha$  antibody that recognizes the three ER $\alpha$  splice variants ER $\alpha$ 66, ER $\alpha$ 46, and ER $\alpha$ 36 was purchased from Abcam (San Francisco, CA). 740 Y-P and the Titertacs TUNEL assay were purchased from R&D Systems (Minneapolis, MN). Goat antirabbit horseradish peroxidase (HRP) and goat anti-mouse HRP-conjugated secondary antibodies were obtained from Bio-Rad (Hercules, CA). Bax and Bcl2 primers were purchased from Eurofins MWG Operon (Huntsville, AL). The cytochrome C apoptosis assay kit was purchased from MBL International (Woburn, MA). The Amplex Red Phospholipase D (PLD) Assay kit was purchased from Life Technologies (Grand Island, NY). Caspase-3 activity was measured using the CaspAce Assay system from Promega (Madison, WI). ER $\alpha$ 36 overexpression plasmids were purchased from Chi Scientific (Maynard, MA). Polyfect transfection reagent was obtained from Qiagen (Germantown, MD).

### 2.2 Cell Culture

HCC38 cells and HEK293 cells were cultured in RPMI 1640-based media or DMEM, respectively, as specified by the ATCC containing 10% charcoal/dextran-filtered FBS and lacking phenol red, which can mimic the effects of E<sub>2</sub> at low levels [25, 26]. Specific modifications for each experimental question are described below. For all experimental treatments, the solvent used according to preparation instructions by the manufacturer of each reagent was used in equivalent amounts as a treatment vehicle in all controls.

### 2.3 Apoptotic Effect of Taxol in HCC38 Cells

The experimental design for this study was based on the ability of E<sub>2</sub> to block the apoptotic effects of taxol. Initial experiments were performed to establish the effect of taxol on HCC38 cells. 24 hours after plating, HCC38 cells were treated with increasing concentrations of taxol (5, 10, 20μM) for 4 hours, after which caspase-3 activity was measured using an assay kit according to the manufacturer's directions. To confirm that the effects of taxol were apoptotic, as caspase-3 activity is implicated in the terminal differentiation of some cell types [27–30], HCC38 cells were treated with 20μM taxol for 12 hours and BAX/BCL2 mRNA levels were determined and cytochrome C translocation from the mitochondria to the cytosol was examined by the cytochrome C apoptosis assay kit from MBL International according to the manufacturer's instructions. In addition, 24 hours after treatment with taxol, apoptosis-associated DNA-fragmentation was determined using a TUNEL assay kit as per the manufacturer's directions.

### 2.4 Requirement for a Receptor-mediated Membrane-associated Mechanism

E<sub>2</sub> conjugated to bovine serum albumin (E<sub>2</sub>-BSA), which cannot cross the plasma membrane (PM) [31–33] was used to verify that the anti-apoptotic effect of E<sub>2</sub> was via a membrane-mediated mechanism. E<sub>2</sub>-BSA has previously been shown to have similar effects to E<sub>2</sub> and can interact with ERs. BSA conjugation prevents E<sub>2</sub> from crossing the PM, and therefore, E<sub>2</sub>-BSA effects can be attributed to either membrane receptor effects or alterations in membrane fluidity due to the hydrophobic nature of E<sub>2</sub>-BSA [17, 31, 32, 34]. To address the possibility that E<sub>2</sub>'s effect is due to a nonspecific interaction with the PM, cells were also treated with the E<sub>2</sub> enantiomer, Ent-E<sub>2</sub> [24]. While Ent-E<sub>2</sub> has the same chemical structure as E<sub>2</sub> as its enantiomer, it cannot directly interact with ERs, and therefore, any effects caused by Ent-E<sub>2</sub> could be attributed to its direct effect on membrane fluidity, as it possesses the same hydrophobic properties of E<sub>2</sub>.

PLD activity was determined as an outcome measure, based on our previous observation that the anti-apoptotic effect of the vitamin D3 metabolite 24R,25-dihydroxyvitamin-D3 (24,25(OH)2D3) occurs through activation of PLD [35]. Subconfluent cultures of HCC38 cells in 24-well tissue culture polystyrene (TCPS) plates were treated with E<sub>2</sub> or Ent-E<sub>2</sub>. Also, prior to E<sub>2</sub> treatment, a 15 minute pretreatment of cells with polyclonal ERα36 specific antibodies (1:500 dilution) was performed to block the membrane receptor in order to determine if the effect of E<sub>2</sub> was through membrane-associated ERα36. While antibodies cannot enter the cells, any inhibition of E<sub>2</sub>'s effect in the presence of antibody could be attributed with E<sub>2</sub>'s direct interaction with membrane-associated ERα36. Following the 15 minute antibody pre-treatment, and a 30 minute E<sub>2</sub> treatment, samples were harvested and assayed for PLD activity using the Amplex Red PLD assay from Life Technologies according to manufacturer's instructions.

### 2.5 ERα36 Silencing, Overexpression, and Mutation

In order to confirm the role of ERα36 in the anti-apoptotic effect of E<sub>2</sub>, HCC38 cells were transiently transfected with an ERα36 shRNA expression plasmid in order to transiently knockdown ERα36. The shRNA expression plasmid was produced by cloning a microRNA specific anti-sense target sequence for the 3'UTR of ERα36 cDNA using the DNA

oligonucleotides, 5'-GGATCCCATGCCAATAGGTAAGTGAATTGATATCCGTTTCAGTACCTATTGGCATT TTTTCCAAAAGCTT-3', and was prepared by Sigma-Aldrich using their Mission shRNA purified plasmid expression system. HCC38 cells were seeded at a density of  $1.25 \times 10^5$  cells/cm<sup>2</sup> in tissue culture treated polystyrene (TCPS) and cultured in media containing no antibiotics. One day after plating, when cells were approximately 75% confluent, transient transfection was performed using Polyfect transfection reagent from Qiagen according to the manufacturer's instructions. Media were changed after 24 hours to full growth media, and 48 hours after transfection, cells were treated according to experimental procedures. The PLD and caspase-3 activity assays were performed with HCC38 silenced for ER $\alpha$ 36 (denoted as shER $\alpha$ 36), wildtype HCC38 cells (denoted as WT), and nontarget transfected HCC38 cells (denoted as shControl). Whole cell lysates were harvested in RIPA and western blot was performed on WT and shER $\alpha$ 36 HCC38 cells using ER $\alpha$ 36 antibodies (1:500 dilution). Densitometry analysis using Quantity One software was performed to determine percentage of knockdown in shER $\alpha$ 36 cells.

In order to determine the importance of ER $\alpha$ 36 on a more generalized platform, the human embryonic kidney cell line, HEK293, which has been previously cited to not express functional levels of endogenous ER $\alpha$ 36 [21], was used as a model for analysis of wildtype exogenous ER $\alpha$ 36 overexpression (denoted as 293ovrx36). Use of HEK293 cells thus allowed us to examine the role of wildtype exogenous ER $\alpha$ 36 and mutated ER $\alpha$ 36 independent of the presence of functional endogenous ER $\alpha$ 36.

Because exon 9 is unique to ER $\alpha$ 36, and ER $\alpha$ 66 has not been shown to mediate the membrane-associated effect of E<sub>2</sub> in ER-positive MCF7 cells [17], we hypothesized that exon 9 was required for these responses. An exon 9 deletion mutant (denoted as 293ex9d36) was created using overlap extension PCR cloning as previously described by Bryksin and Matsumura [36]. Exon 9 deleted HEK293 cells were then created according to the methods described below, allowing us to examine the requirement of this exon in the anti-apoptotic pathway of E<sub>2</sub>.

HEK293 cells were transiently transfected with ER $\alpha$ 36 full-length wildtype cDNA and ER $\alpha$ 36 exon 9-deletion cDNA plasmids using Polyfect transfection reagent according to manufacturer's instructions. HEK293 cells were seeded at a density of  $1.25 \times 10^5$  cells/cm<sup>2</sup> in TCPS plates and cultured in medium containing no antibiotics. One day after plating, when cells were approximately 75% confluent, transient transfection was performed using Polyfect transfection reagent according to the manufacturer's protocol. Media were changed after 24 hours to full growth media, and 48 hours after transfection, cells were treated as previously described for measurement of PLD and caspase-3 activity. PLD and caspase-3 activity assays were performed in HEK293 overexpressed with wildtype ER $\alpha$ 36 (293ovrx36) and exon 9- deleted ER $\alpha$ 36 (293ex9d36). Wildtype HEK293 cells mock transfected with a non-targeting vector and plated at the same time as the mutant cells were used as positive controls. Whole cell lysates were harvested in RIPA and western blot was performed on 293wt, 293ovrx36, and 293ex9d36 HEK293 cells using ER $\alpha$  antibodies (1:500 dilution) that can also detect ER $\alpha$ 36. These antibodies were used rather than ER $\alpha$ 36 antibodies because the ER $\alpha$ 36 antibodies detect the C-terminal domain of ER $\alpha$ 36, and the

exon 9 deletion mutants (293ex9d36) do not contain this region. Bands shown in western blots were detected at ~36kDa. Densitometry analysis using Quantity One software was performed to determine percentage of knockdown in shER $\alpha$ 36 cells.

## 2.6 Examination of E<sub>2</sub>'s Anti-apoptotic Pathway

In order to determine the signaling pathway involved in the anti-apoptotic effect of E<sub>2</sub>, we took advantage of the observation that E<sub>2</sub> inhibits taxol-induced apoptosis via membrane-associated signaling by attenuating the effect of taxol on caspase-3 activity [3, 18]. For the experiments described below, subconfluent cultures of HCC38 cells were pretreated with 10<sup>-8</sup>M E<sub>2</sub> for 90 minutes followed by 20 $\mu$ M taxol treatment, after which time, E<sub>2</sub> was removed from the cultures. After 24 hours of taxol treatment, the number of viable cells was determined by the MTT assay, which measures the reduction of 3-(4,5-dimethylthiazol-2-yl)-2,5-diphenyltetrazolium bromide to purple formazan by mitochondrial reductase in living cells [37]. After 4 hours of taxol treatment, caspase-3 activity was determined as described above. Requirement for ER $\alpha$ 36 was determined by pretreating the HCC38 cells with antibodies generated against the unique C-terminus of ER $\alpha$ 36. Phosphatidylcholine-specific PLD (PC-PLD) was inhibited using 10<sup>-5</sup>M wortmannin [38, 39].

Phosphatidylcholine-specific phospholipase C (PC-PLC) was inhibited using 5x10<sup>-5</sup>M D609 [39, 40]. Phosphatidylinositol-specific phospholipase C (PI-PLC) was inhibited using 10<sup>-5</sup>M U73122 [38, 39]. 10<sup>-6</sup>M VPC32183S was used to block lysophosphatidic acid (LPA) signaling through LPA1 and LPA3 receptors, while LPA was used to activate LPA signaling [35]. 10<sup>-5</sup>M LY294002 was used to block phosphoinositide-3-kinase (PI3K) [35]. 10<sup>-6</sup>M 740 Y-P was used to activate PI3K signaling [41]. 3 $\mu$ M thapsigargin was used to inhibit calcium translocation from the rough endoplasmic reticulum to the cytosol. Pertussis toxin (25ng/mL) was used to inhibit G $\alpha$ i signaling, while cholera toxin (100ng/mL) was used to inhibit G $\alpha$ s signaling [35]. E<sub>2</sub>-BSA was also used in several of these experiments to further determine if these effects were membrane-associated. As previously described, E<sub>2</sub>-BSA cannot cross the PM, but still has many similar effects to E<sub>2</sub>. For all caspase-3 experiments using E<sub>2</sub>-BSA, subconfluent cultures of HCC38 cells were pretreated as with the inhibitors stated above followed with 10<sup>-8</sup>M E<sub>2</sub>-BSA for 90 minutes. 20 $\mu$ M taxol was then added, and after 4 hours of taxol treatment, caspase-3 activity was measured as described above.

## 2.7 Requirement for Dynamic Palmitoylation

Previous work has shown that ERs, particularly the ER $\alpha$  variants ER $\alpha$ 66 and ER $\alpha$ 46, can be targeted to the PM by palmitoylation [42, 43]. ER $\alpha$ 66 and ER $\alpha$ 46 have been identified as translocating to the PM due to palmitoylation. In order to examine this, tunicamycin and 2-bromohexadecanoic acid (2-bromopalmitate, 2-BP) were used to inhibit palmitoylacyltransferase and thus prevent palmitoylation of ER $\alpha$ 36 [42]. Cycloheximide (8 $\mu$ M), an inhibitor of protein synthesis, was used to disrupt N-glycosylation and HMA (0.5mM) was used to block myristoylation [42]. HCC38 cells were pre-treated with 30 $\mu$ M tunicamycin (Tm) and 10 $\mu$ M 2-BP to inhibit the activity of palmitoylacyltransferase, which is responsible for post-translational palmitoylation of proteins that are targeted to the PM [42, 44]. Tunicamycin, however, also inhibits N-linked glycosylation [42], and because of this, we also pre-treated cells with 8 $\mu$ M cycloheximide (CHM) as a control for N-glycosylation

inhibition [42]. In order to invalidate the possibility that the membrane effects of E<sub>2</sub> through ER $\alpha$ 36 do not occur due to myristoylation, we also pre-treated cells with 0.5mM 2-hydroxymyristic acid (HMA), which blocks post-translational myristoylation [42]. In order to determine if palmitoylation of ER $\alpha$ 36 is necessary for the anti-apoptotic effect of E<sub>2</sub>, HCC38 cells were pre-treated with 30 $\mu$ M Tm and 10 $\mu$ M 2-BP for 2 hours prior to E<sub>2</sub> and taxol treatment for 4 hours, after which, caspase-3 activity was measured.

## 2.8 Statistical Analyses

For all experiments, statistical analyses were performed by analysis of variance with Bonferroni's correction for multiple comparisons. All experiments were performed with n=6 individual cultures per variable, enabling statistical analysis for individual experiments. Experiments were performed multiple times to ensure validity of the data. Results of individual experiments are presented. For all graphs, error bars represent standard error of the mean of 6 individual cultures per variable in one representative experiment.

## 3. RESULTS

### 3.1 Effect of Taxol on Apoptosis

Taxol induced apoptosis in the HCC38 cells. Terminal deoxynucleotidyl transferase dUTP nick-end labeling (TUNEL) and caspase-3 activity both exhibited a dose-dependent increase (Figure 1A,B). *BAX/BCL2* also increased, confirming that the cells were apoptotic (Figure 1C). Results were further confirmed by an increase in cytochrome C translocation from the mitochondria to the cytosol in the presence of 20 $\mu$ M taxol (Figure 1D).

### 3.2 Role of ER $\alpha$ 36 in Activation of PLD by E<sub>2</sub>

We found that 10<sup>-8</sup>M E<sub>2</sub> activated phospholipase D (PLD) in HCC38 cells at 30 and 60 minutes (Figure 2A). The effect was receptor-mediated. Unlike E<sub>2</sub>, E<sub>2</sub> enantiomer (Ent-E<sub>2</sub>) concentrations used in this study did not have the same effect at 30 minutes (Figure 2B). Antibodies to ER $\alpha$ 36 blocked the effect of E<sub>2</sub> on PLD activity (Figure 2C). Additionally, when HCC38 cells were transiently transfected with ER $\alpha$ 36 shRNA expression plasmids (Figure 2D) resulting in greater than 70% knockdown of ER $\alpha$ 36 protein levels, E<sub>2</sub> was unable to increase PLD activity (Figure 2E).

### 3.3 Role of ER $\alpha$ 36 in the Anti-apoptotic Effect of E<sub>2</sub>

Membrane activation of ER $\alpha$ 36 signaling by E<sub>2</sub> caused the anti-apoptotic effect of E<sub>2</sub> against taxol. E<sub>2</sub> blocked taxol-induced effects on MTT and caspase-3 activation while the antibody to ER $\alpha$ 36 prevented the effect of E<sub>2</sub> (Figure 2F,G) and E<sub>2</sub> conjugated to bovine serum albumin (E<sub>2</sub>-BSA) (Figure 2H). Additionally, HCC38 cells transiently transfected with ER $\alpha$ 36 shRNA expression plasmids (Figure 2D) exhibited a reduced ability of E<sub>2</sub> to block taxol-induced caspase-3 activity (Figure 2I).

### 3.4 Role of Exon 9

HEK293 cells transiently transfected with wildtype ER $\alpha$ 36 cDNA expression vectors and mutant vectors designed to express exon 9-deleted ER $\alpha$ 36 cDNA were shown to have

greater detectable levels of ER $\alpha$ 36 protein compared to wildtype HEK293 cells, which exhibited very low levels of ER $\alpha$ 36 shown by western blot using ER $\alpha$  antibodies that detect ER $\alpha$ 36 (Figure 3A). Although wildtype HEK293 cells exhibited decreased PLD activity after 30 minutes of treatment with 10<sup>-8</sup>M E<sub>2</sub>, HEK293 cells transiently overexpressing exogenous wildtype ER $\alpha$ 36 (293ovrx36) exhibited increased PLD activity after 30 minutes of E<sub>2</sub> treatment. Exon 9-deleted exogenous ER $\alpha$ 36 expression mutants (293ex9d36) were unable to promote this effect of E<sub>2</sub> on PLD activity (Figure 3B). Additionally, while overexpression of wildtype ER $\alpha$ 36 allowed E<sub>2</sub> to block taxol-induced caspase-3 activity in HEK293 cells, exon 9 deletion did not appear to affect E<sub>2</sub>'s effect against taxol induced caspase-3 activity. Interestingly, exon 9 deletion increased caspase-3 activity alone (Figure 3C).

### 3.5 Role of PLD

We also found that inhibition of phosphatidylcholine specific PLD (PC-PLD) with wortmannin blocked the anti-apoptotic effect of E<sub>2</sub> on taxol-induced caspase-3 activity (Figure 4A), indicating that the effect of E<sub>2</sub> on PLD leads to its anti-apoptotic effect. We did not see a similar effect when we inhibited phosphatidylcholine specific phospholipase C (PC-PLC) with D609 (Figure 4B) or phosphatidylinositol specific PLC (PI-PLC) with U73122 (Figure 4C), nor in the case of E<sub>2</sub>-BSA's effect on taxol-induced caspase-3 activity (Supplementary Figures S1 and S2, respectively).

### 3.6 Role of Lysophosphatidic Acid

The anti-apoptotic pathway of E<sub>2</sub> was mediated by lysophosphatidic acid (LPA) signaling. When LPA signaling through the LPA1/3 receptors was inhibited with VPC32183S, the anti-apoptotic effect of E<sub>2</sub> and E<sub>2</sub>-BSA on taxol-induced caspase-3 activity was prevented (Figure 5A, Supplementary Figure S3). VPC32183S also inhibited the effect of taxol (Figure 5A), suggesting some crosstalk in the taxol and E<sub>2</sub> pathways. LPA blocked the effect of taxol on caspase-3 activity in a similar manner as E<sub>2</sub> (Figure 5B).

### 3.7 Role of Phosphoinositide-3-kinase

Phosphoinositide-3-kinase (PI3K) plays a role in the anti-apoptotic pathway of E<sub>2</sub>. Inhibition of PI3K with LY294002 prevented the effect of E<sub>2</sub> and E<sub>2</sub>-BSA on taxol-induced caspase-3 activity (Figure 5C, Supplementary Figure S4). Conversely, the PI3K activator 740 Y-P prevented taxol-induced caspase-3 activity (Figure 5D).

### 3.8 Effect of Calcium and G-protein Signaling

Pre-treatment of cells with thapsigargin, which inhibits cytosolic calcium influx from the endoplasmic reticulum, increased caspase-3 activity to a comparable extent as taxol, indicating that blocking of calcium signaling can induce apoptosis (Figure 5E,F). E<sub>2</sub> alone cannot overcome the effect of thapsigargin on caspase-3 activity (Supplementary Figure S6). E<sub>2</sub> or E<sub>2</sub>-BSA (Supplementary Figure S7) reversed this effect. Pertussis toxin (PTX), which inhibits G $\alpha$ i signaling, also increased caspase-3 activity, as did cholera toxin (CTX), which inhibits G $\alpha$ s signaling (Figure 5F). Neither E<sub>2</sub> nor E<sub>2</sub>-BSA had an effect on PTX-induced caspase-3 activity; however, both E<sub>2</sub> and E<sub>2</sub>-BSA (Supplementary Figure S7) reduced the



effect of CTX and taxol on caspase-3 activity, indicating that the anti-apoptotic effect of E<sub>2</sub> may require membrane activation of G $\alpha$ s.

### 3.9 Role of Palmitoylation

HCC38 cells treated with 10<sup>-8</sup>M E<sub>2</sub> for 9 minutes exhibited increased PM localization of ER $\alpha$ 36, as determined by densitometry analysis of western blots (Supplementary Figure S8), while cells pre-treated for 2 hours with tunicamycin (Tm) or 2-bromopalmitate (2-BP) did not (Figure 6A). Cycloheximide (CHM) had no effect on translocation of ER $\alpha$ 36 to the membrane in response to E<sub>2</sub> (data not shown), nor did it alter E<sub>2</sub>-dependent increases in PKC (Figure 6B) or PLD (Figure 6C). 2-hydroxymyristic acid (HMA) reduced translocation of ER $\alpha$ 36 (Figure 6A), but did not alter E<sub>2</sub>-dependent PKC or PLD. In contrast, Tm and 2-BP blocked ER $\alpha$ 36 translocation and the stimulatory effects of E<sub>2</sub> on PKC and PLD indicating that palmitoylation played a role in these effects. In addition, palmitoylation was required for the anti-apoptotic effect of E<sub>2</sub>. Tm blocked the effect of E<sub>2</sub> on taxol-induced caspase-3 activity (Figure 6D) as did 2-BP (Figure 6E). Similar effects were observed in cells treated with E<sub>2</sub>-BSA (Figure 6F) indicating that a PM receptor was involved.

## 4. DISCUSSION

This study examined a mechanism by which E<sub>2</sub> functions to promote breast cancer cell survivability. Our approach used taxol as an agent to induce apoptosis, and antibodies, inhibitors, and activators of proteins involved in the hypothesized anti-apoptotic mechanism of action of E<sub>2</sub>. We used caspase-3 activity as our endpoint measurement because caspase-3 is a downstream regulator of taxol-induced apoptosis, and we previously showed that membrane-associated E<sub>2</sub> signaling abrogates the effect of taxol on caspase-3 activity [18]. While TUNEL is ideal in measuring cell death as an indicator of DNA fragmentation typical of apoptosis, we believe caspase-3 is a more adequate assessment of cell physiology. Taxol caused apoptosis in HCC38 cells in a similar manner to that seen in ER-positive MCF7 and ZR-75-1 breast cancer cells through activation of Bcl2 associated proteins, cytochrome-C translocation, and caspase-3 activation [3]. While other forms of apoptosis exist other than those functioning through caspase signaling [45], this study was based on previous work showing an antagonistic role of E<sub>2</sub> against caspase-dependent taxol-induced apoptosis [3].

HCC38 cells, which are thought to be triple-negative, do express ER $\alpha$ 36, an alternatively spliced variant of the traditional ER $\alpha$  [18]. E<sub>2</sub> signaling promoted anti-apoptosis against taxol-induced caspase-3 activity. The ability of antibodies against ER $\alpha$ 36 and ER $\alpha$ 36 silencing to prevent the anti-apoptotic effect of E<sub>2</sub> against taxol in this study proves that the anti-apoptotic effect is mediated specifically through membrane-associated ER $\alpha$ 36.

While results using only E<sub>2</sub> do not specifically prove the role of a membrane-mediated mechanism, our results using E<sub>2</sub>-BSA support the role of a membrane receptor. Not only have our results using antibodies against ER $\alpha$ 36 implicate it as the membrane receptor responsible for these effects, but membrane association is required for these effects, as is seen with the results using inhibitors to palmitoylation. Because the anti-apoptotic effect of E<sub>2</sub> is through a nongenomic, membrane-mediated mechanism that begins with E<sub>2</sub>/ER $\alpha$ 36 interaction at the PM, we hypothesized that dynamic palmitoylation by palmitoylacetyl-

transferase (PAT), mediates the membrane effect of E<sub>2</sub> through ER $\alpha$ 36 against taxol-induced caspase-3 activity. As expected, due to several previous studies indicating membrane association of ERs, particularly ER $\alpha$ 66 and ER $\alpha$ 46, occurs due to palmitoylation [42, 43], the membrane effect of E<sub>2</sub> through ER $\alpha$ 36 is also mediated via palmitoylation. The use of 2-hydroxymyristic acid (HMA), which prevents myristoylation of proteins, did not abolish membrane association of ER $\alpha$ 36. Our work using cycloheximide (CHM), HMA, tunicamycin, and 2-bromopalmitate (2-BP), indicates that membrane association of ER $\alpha$ 36 can occur rapidly within minutes of treatment with E<sub>2</sub>, suggesting that E<sub>2</sub> itself promotes rapid association of ER $\alpha$ 36 with the PM via palmitoylation. Tunicamycin (Tm), a known inhibitor of PAT, completely blocked the E<sub>2</sub>-induced membrane association of ER $\alpha$ 36. However, Tm is also known to be a potent inhibitor of N-glycosylation [42], indicating it is not the most ideal candidate for studying palmitoylation. Therefore, CHM was used as a suitable control for this undesired effect of Tm, and CHM was unable to block the E<sub>2</sub>-induced PM association of ER $\alpha$ 36. In addition, we used 2-BP to specifically inhibit PAT activity [44]. The effects of 2-BP were similar to those seen with Tm, and with both inhibitors, we observed a reduction in rapid membrane association of ER $\alpha$ 36, an inhibitory effect on E<sub>2</sub>-induced PKC and PLD activation, and complete abolishment of the anti-apoptotic effect of E<sub>2</sub>. These results lead to the conclusion that the anti-apoptotic effect of E<sub>2</sub> occurs with rapid and dynamic palmitoylation of ER $\alpha$ 36 leading to membrane association of the receptor within minutes.

In addition, ER $\alpha$ 36 contains a unique C-terminal exon, exon 9, which codes for 27 amino acids of unknown function. Wang et al. hypothesized that this exon contains a potential myristoylation sequence [21]. Therefore, we created ER $\alpha$ 36 deletion mutants to determine if the anti-apoptotic membrane effect of E<sub>2</sub> is dependent on the presence of exon 9. HEK293 cells were used as a model for overexpression of wildtype exogenous ER $\alpha$ 36 and exon 9-deleted ER $\alpha$ 36 expression plasmids. We observed the requirement for exon 9 in the effect of E<sub>2</sub> on PLD activity, but the role of exon 9 in the effect of E<sub>2</sub> against taxol-induced caspase-3 was less clear. Because we observed an increase in caspase-3 activity when we removed exon 9 without any other treatment, it is possible that the removal of exon 9 alters the overall effect of ligand-independent ER $\alpha$ 36. Because our results indicate palmitoylation is a mechanism by which ER $\alpha$ 36 translocates dynamically to the PM, and HMA did not prevent the effect of E<sub>2</sub>, further studies are necessary to determine if exon 9 is a target for palmitoylation of ER $\alpha$ 36.

Previous results were not clear as to how E<sub>2</sub> promotes anti-apoptosis [3]. The vitamin-D3 metabolite, 24R,25-dihydroxyvitamin-D3, another steroid hormone that activates PKC through a similar mechanism as E<sub>2</sub>, has anti-apoptotic effects by activating PLD in chondrocytes [35]. Based on this, we investigated whether E<sub>2</sub> can rapidly activate PLD in breast cancer cells and found that E<sub>2</sub> activated PC-PLD within 30 minutes, which occurred specifically through membrane-associated ER $\alpha$ 36. Moreover, wortmannin blocked the effect of E<sub>2</sub> on taxol-induced caspase-3 activity, indicating that PLD activation mediates the anti-apoptotic effect of E<sub>2</sub> in breast cancer, particularly in TNBC cells.

While PC-PLD was shown to play a role in the anti-apoptotic effect of E<sub>2</sub>, neither PI-PLC, nor PC-PLC appeared to be involved. Neither U73122 nor D609 abrogated the effect of E<sub>2</sub>;

however, both blocked the effect of taxol on caspase-3 activity, suggesting a possible role of PLC in taxol's apoptotic mechanism. As Levin et al. showed that taxol induces apoptosis through a JNK-dependent mechanism [46], it is possible that JNK is activated through a pathway requiring PLC. Other studies show JNK activation can occur through a PKC-associated pathway, explaining the effects of D609 and U73122, which inhibit PC-PLC and PI-PLC respectively, on taxol-induced caspase-3 activity.

Due to its well-known role in anti-apoptotic pathways [47–49], we hypothesized PI3K to be part of the pathway by which E<sub>2</sub> exerts its anti-apoptotic effect. Not only did LY294002, a specific inhibitor of PI3K, block E<sub>2</sub>'s anti-apoptotic effect against taxol, but also the PI3K activator, 740 Y-P, alone prevented taxol's apoptotic effect. Similarly, the addition of LPA, which is known to regulate anti-apoptosis through a PI3K-Akt-dependent mechanism [35], prevented the effect of taxol on cancer cell apoptosis. However, the use of VPC32183S, which inhibits signaling of LPA via the LPA1 and LPA3 receptors [50], not only blocked the E<sub>2</sub> antiapoptotic effect, but also appeared to block taxol's effect. Because this inhibitor is not specific to one isoform of the LPA receptor, it may have multiple competing effects on LPA signaling. These effects on taxol-induced apoptosis suggest that LPA signaling is a promiscuous process that may have differential effects on apoptotic signaling pathways, and it may be that LPA signaling, while it appears to be a component of the anti-apoptotic effect of E<sub>2</sub>, may also function in the pathway by which taxol induces apoptosis.

We originally hypothesized that G-protein and intracellular calcium signaling may also play a role in the anti-apoptotic effect of E<sub>2</sub>. Thapsigargin, an inhibitor of endoplasmic reticulum-associated calcium channels to block the influx of calcium to the cytosol, alone caused a marked increase in caspase-3 activity when HCC38. Although this effect was reduced by the use of E<sub>2</sub>, it was not clear whether calcium involvement in this anti-apoptotic effect of E<sub>2</sub> was specifically through the pathway that includes PLD. Interestingly, as we have shown that PKC activity is important for the maintenance of cancer cell survival [18], these results suggest that PLC-specific PKC activation, which requires calcium efflux from the endoplasmic reticulum, may not only promote cancer cell proliferation, but may also crosstalk with the anti-apoptotic pathway to block caspase-3. Similarly, we also observed that PTX and CTX, inhibitors of G-protein signaling, also caused marked increases in caspase-3 activity alone. Although the role of G-protein is unclear due to these results, it is interesting to note that the rapid activation of PKC in HCC38 cells occurs via G<sub>αs</sub> activation. We can also suggest that these effects of PTX and CTX may be due to attenuation of LPA receptor signaling, which depends on G-protein function. While the effect of PTX on caspase-3 activity was not abrogated by E<sub>2</sub>, the effect of CTX, which specifically inhibits G<sub>αs</sub> signaling, was reduced by E<sub>2</sub>, which is consistent with the idea that PKC activation by E<sub>2</sub> occurs by G<sub>αs</sub> activation [17] and is anti-apoptotic. Although further investigation into the role of G<sub>αs</sub> signaling in this pathway is necessary, the results suggest a membrane-delimited role of ER $\alpha$ 36 in the anti-apoptotic pathway of E<sub>2</sub>.

Based on the results of this study, along with previous work regarding E<sub>2</sub>'s non-genomic, membrane-mediated effects in HCC38 cells, we have developed a working model for a mechanism by which E<sub>2</sub> promotes TNBC cell survival, specifically through proliferative and anti-apoptotic effects. Interaction of E<sub>2</sub> with ER $\alpha$ 36 on the PM leads to a signaling cascade

that begins with G-protein activation, specifically  $G_{\alpha s}$ , leading to activation of phosphatidylcholine-specific PLD (Figure 7). PLD then converts phosphatidylcholine (PC) to phosphatidic acid (PA), which after conversion to lysophosphatidic acid (LPA) activates LPA receptors, which promote activation of PI3K. PI3K then promotes anti-apoptotic activity, which can prevent activation of a caspase signaling cascade that ultimately leads to caspase-3 activation and apoptosis. As taxol promotes caspase-3 activation through a mechanism detailed by Levin et al. [3], which includes JNK phosphorylation and cytochrome C release from the mitochondria,  $E_2$ 's inhibitory effect on caspase-3 activity counteracts the pro-apoptotic effect of taxol. At the same time, the activation of signaling through  $ER\alpha_{36}$  can also promote PKC activation through PLC, diacylglycerol (DAG), and inositol trisphosphate (IP3) [17, 18]. PLD can also further activate PKC, indicating cross talk between diverging pathways that are simultaneously activated by  $E_2$  at the PM [17, 39]. This rapid activation of PKC can lead to proliferative pathways including MAP kinase signaling. Our previous mechanism of action of  $E_2$  signaling through  $ER\alpha_{36}$  leading to cell proliferation together with our current proposed model of anti-apoptosis suggests a combined deleterious effect of  $E_2$  signaling in breast cancer cells [17, 18]. While  $E_2$  promotes proliferation through  $ER\alpha_{36}$ , it can also promote anti-apoptosis against chemotherapeutics, protecting cancer cells from therapy, while promoting tumor growth.

Histological results examining  $ER\alpha_{36}$  in tumors have shown better prognosis in patients with membrane localization of  $ER\alpha_{36}$  [51]. While this would initially appear to be a divergent result to what we report in the current study, we cannot control for external effects in these patients, such as treatments to which our cells are not exposed in vitro. Perhaps better prognosis in these patients illustrates a possible role of  $ER\alpha_{36}$  as an ideal treatment target. It is possible that tamoxifen, which can inhibit protein kinase C and thus the proliferative pathway of  $E_2$ , can act through  $ER\alpha_{36}$  or  $ER\alpha_{36}$ -dependent signaling pathways, and this may result in a better prognosis. If this is true, this just further demonstrates the value of  $ER\alpha_{36}$  as a novel target.

## 5. CONCLUSION

This study provides a working model for a mechanism of membrane-associated  $E_2$  signaling in TNBC through  $ER\alpha_{36}$ . We previously showed that rapid activation of PKC is mediated by PM-associated  $ER\alpha_{36}$  leading to cancer cell proliferation. Here we show that activation of  $ER\alpha_{36}$  by  $E_2$  also leads to activation of anti-apoptosis, involving PC-PLD, LPA, and PI3K. Crosstalk can also occur due to the ability of PLD to activate PKC through a DAG-dependent mechanism, with PKC able to promote anti-apoptosis. The role of  $ER\alpha_{36}$  in this pathway, and the fact that  $ER\alpha_{36}$  mediates this effect from the PM, suggests that  $ER\alpha_{36}$  may be a suitable target for diagnosis and treatment of breast cancer. Perhaps  $ER\alpha_{36}$  specific monoclonal antibodies would provide another avenue to more robustly target and kill breast cancer cells overexpressing the receptor. In theory, targeting of  $ER\alpha_{36}$  would prevent the anti-apoptotic effect of  $E_2$  and thus provide a novel approach to personalized, adjuvant therapy against breast cancer.

## Supplementary Material

Refer to Web version on PubMed Central for supplementary material.

## ACKNOWLEDGEMENTS

This work was supported in part by the Price Gilbert, Jr. Charitable Fund. It was also supported by the National Center for Advancing Translational Sciences of the National Institutes of Health under Award Number UL1TR000454 and TL1TR000456. The content is solely the responsibility of the authors and does not necessarily represent the official views of the National Institutes of Health. The funders had no role in study design, data collection and analysis, decision to publish, or preparation of the manuscript

## Abbreviations

<b>ER</b>	estrogen receptor
<b>E<sub>2</sub></b>	17 $\beta$ -estradiol
<b>Ent-E<sub>2</sub></b>	enantiomer to 17 $\beta$ -estradiol
<b>PLD</b>	phospholipase D
<b>PI3K</b>	phosphoinositide-3-kinase
<b>LPA</b>	lysophosphatidic acid
<b>PTX</b>	pertussis toxin
<b>CTX</b>	cholera toxin
<b>PI</b>	phosphatidylinositol
<b>PC</b>	phosphatidylcholine
<b>PLC</b>	phospholipase C
<b>PM</b>	plasma membrane
<b>PKC</b>	protein kinase C
<b>BSA</b>	bovine serum albumin
<b>HMA</b>	hydroxymyristic acid
<b>2-BP</b>	2-bromopalmitate
<b>Tm</b>	tunicamycin
<b>CHM</b>	cycloheximide
<b>TUNEL</b>	Terminal deoxynucleotidyl transferase dUTP nick-end labeling, shRNA-short hairpin ribonucleic acid
<b>PAT</b>	palmitoylacyltransferase

## REFERENCES

- Howlader N, NA.; Krapcho, M.; Neyman, N.; Aminou, R.; Altekruse, SF.; Kosary, CL.; Ruhl, J.; Tatalovich, Z.; Cho, H.; Mariotto, A.; Eisner, MP.; Lewis, DR.; Chen, HS.; Feuer, EJ. Cronin KA SEER Cancer Statistics Review, 1975–2009 (Vintage 2009 Populations. National Cancer Institute; Bethesda, MD; 2012.

2. Herranz N, Pasini D, Diaz VM, Franci C, Gutierrez A, Dave N, Escriva M, Hernandez-Munoz I, Di Croce L, Helin K, Garcia de Herreros A, Peiro S. Polycomb complex 2 is required for E-cadherin repression by the Snail1 transcription factor. *Mol Cell Biol*. 2008; 28:4772–4781. [PubMed: 18519590]
3. Razandi M, Pedram A, Levin ER. Plasma membrane estrogen receptors signal to antiapoptosis in breast cancer. *Mol Endocrinol*. 2000; 14:1434–1447. [PubMed: 10976921]
4. Sui M, Huang Y, Park BH, Davidson NE, Fan W. Estrogen receptor alpha mediates breast cancer cell resistance to paclitaxel through inhibition of apoptotic cell death. *Cancer Res*. 2007; 67:5337–5344. [PubMed: 17545614]
5. Kiyotani K, Mushiroda T, Sasa M, Bando Y, Sumitomo I, Hosono N, Kubo M, Nakamura Y, Zembutsu H. Impact of CYP2D6\*10 on recurrence-free survival in breast cancer patients receiving adjuvant tamoxifen therapy. *Cancer Sci*. 2008; 99:995–999. [PubMed: 18294285]
6. DiMartino L, Demontis B, Mitchell IP, Hayward SW, Deshpande N. A randomized clinical trial to investigate the usefulness of the addition of prednisolone to tamoxifen as adjuvants to mastectomy in primary breast cancer patients with a high risk of recurrence: a preliminary report. *Anticancer Res*. 1991; 11:869–872. [PubMed: 2064345]
7. Harris EE, Correa C, Hwang WT, Liao J, Litt HI, Ferrari VA, Solin LJ. Late cardiac mortality and morbidity in early-stage breast cancer patients after breast-conservation treatment. *J Clin Oncol*. 2006; 24:4100–4106. [PubMed: 16908933]
8. Wani MC, Taylor HL, Wall ME, Coggon P, McPhail AT. Plant antitumor agents. VI. The isolation and structure of taxol, a novel antileukemic and antitumor agent from *Taxus brevifolia*. *J Am Chem Soc*. 1971; 93:2325–2327. [PubMed: 5553076]
9. Schiff PB, Horwitz SB. Taxol stabilizes microtubules in mouse fibroblast cells. *Proc Natl Acad Sci U S A*. 1980; 77:1561–1565. [PubMed: 6103535]
10. Zhang YL, Zhang ZH, Jiang TY, Ayman W, Jing L, Lv HX, Zhou JP. Cell uptake of paclitaxel solid lipid nanoparticles modified by cell-penetrating peptides in A549 cells. *Pharmazie*. 2013; 68:47–53. [PubMed: 23444780]
11. Hartmann JT, Fels LM, Knop S, Stolt H, Kanz L, Bokemeyer C. A randomized trial comparing the nephrotoxicity of cisplatin/ifosfamide-based combination chemotherapy with or without amifostine in patients with solid tumors. *Invest New Drugs*. 2000; 18:281–289. [PubMed: 10958599]
12. Schmid P, Schippinger W, Nitsch T, Huebner G, Heilmann V, Schultze W, Hausmaninger H, Wischnowsky M, Possinger K. Up-front tandem high-dose chemotherapy compared with standard chemotherapy with doxorubicin and paclitaxel in metastatic breast cancer: results of a randomized trial. *J Clin Oncol*. 2005; 23:432–440. [PubMed: 15659490]
13. Thorpe SM. Immunological quantitation of nuclear receptors in human breast cancer: relation to cytosolic estrogen and progesterone receptors. *Cancer Res*. 1987; 47:1830–1835. [PubMed: 3545455]
14. Jatoi I, Chen BE, Anderson WF, Rosenberg PS. Breast cancer mortality trends in the United States according to estrogen receptor status and age at diagnosis. *J Clin Oncol*. 2007; 25:1683–1690. [PubMed: 17404367]
15. Schneider J, Ruschhaupt M, Buness A, Asslaber M, Regitnig P, Zatloukal K, Schippinger W, Ploner F, Poustka A, Sultmann H. Identification and meta-analysis of a small gene expression signature for the diagnosis of estrogen receptor status in invasive ductal breast cancer. *Int J Cancer*. 2006; 119:2974–2979. [PubMed: 17019712]
16. Fisher B, Redmond C, Brown A, Fisher ER, Wolmark N, Bowman D, Plotkin D, Wolter J, Bornstein R, Legault-Poisson S, et al. Adjuvant chemotherapy with and without tamoxifen in the treatment of primary breast cancer, 5-year results from the National Surgical Adjuvant Breast and Bowel Project Trial. *J Clin Oncol*. 1986; 4:459–471. [PubMed: 2856857]
17. Boyan BD, Sylvia VL, Frambach T, Lohmann CH, Dietl J, Dean DD, Schwartz Z. Estrogen-dependent rapid activation of protein kinase C in estrogen receptor-positive MCF-7 breast cancer cells and estrogen receptor-negative HCC38 cells is membrane-mediated and inhibited by tamoxifen. *Endocrinology*. 2003; 144:1812–1824. [PubMed: 12697687]

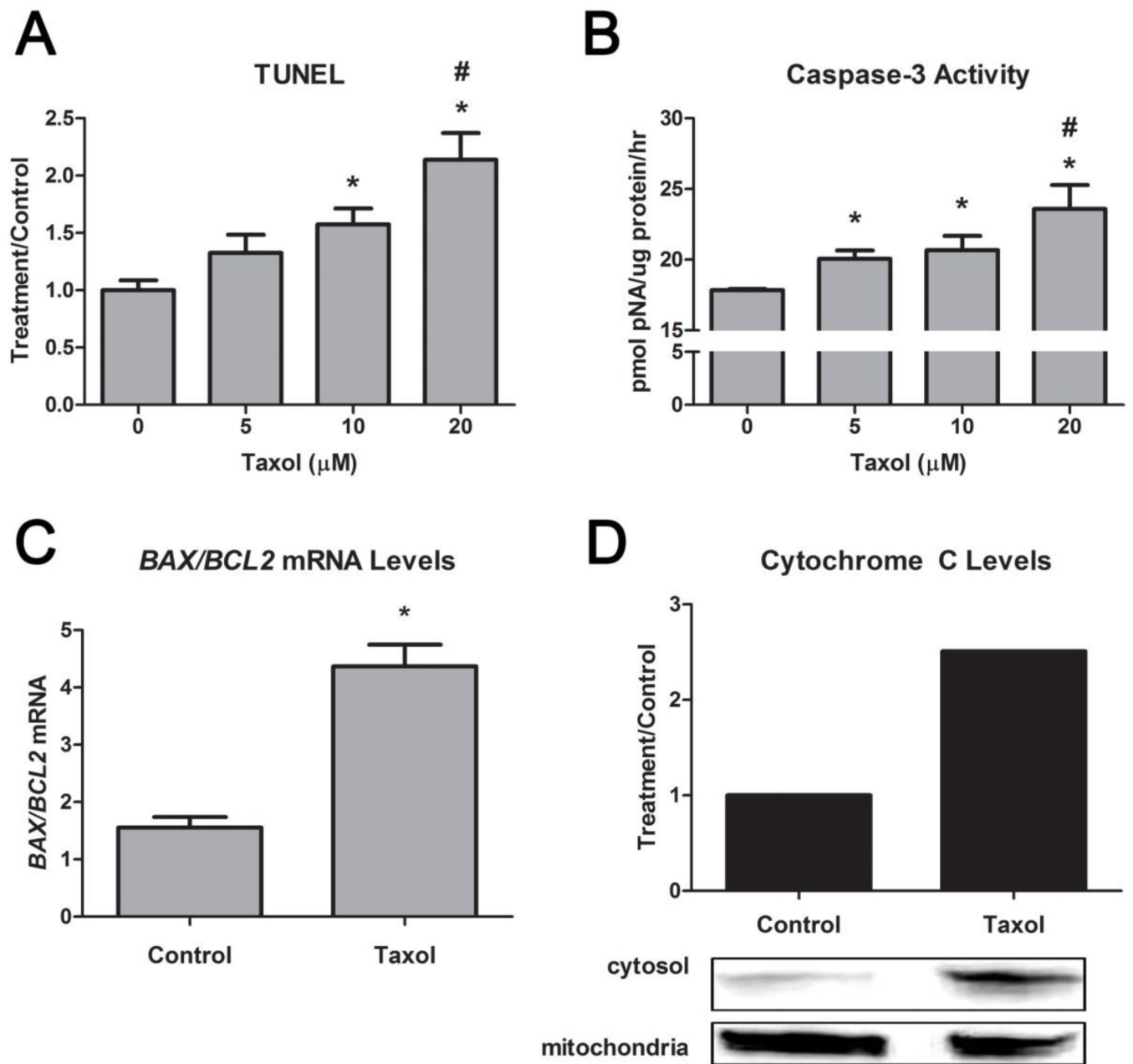
18. Chaudhri RA, Olivares-Navarrete R, Cuenca N, Hadadi A, Boyan BD, Schwartz Z. Membrane estrogen signaling enhances tumorigenesis and metastatic potential of breast cancer cells via estrogen receptor-alpha36 (ERalpha36). *J Biol Chem.* 2012; 287:7169–7181. [PubMed: 22247547]
19. Chaudhri RA, Schwartz N, Elbaradie K, Schwartz Z, Boyan BD. Role of ERalpha36 in membrane-associated signaling by estrogen. *Steroids.* 2014; 81:74–80. [PubMed: 24252378]
20. Wang Z, Zhang X, Shen P, Loggie BW, Chang Y, Deuel TF. Identification, cloning, and expression of human estrogen receptor-alpha36, a novel variant of human estrogen receptor-alpha66. *Biochem Biophys Res Commun.* 2005; 336:1023–1027. [PubMed: 16165085]
21. Wang Z, Zhang X, Shen P, Loggie BW, Chang Y, Deuel TF. A variant of estrogen receptor-{alpha}, hER-{alpha}36: transduction of estrogen- and antiestrogen-dependent membrane-initiated mitogenic signaling. *Proc Natl Acad Sci U S A.* 2006; 103:9063–9068. [PubMed: 16754886]
22. Xie H, Sun M, Liao XB, Yuan LQ, Sheng ZF, Meng JC, Wang D, Yu ZY, Zhang LY, Zhou HD, Luo XH, Li H, Wu XP, Wei QY, Tang SY, Wang ZY, Liao EY. Estrogen receptor alpha36 mediates a bone-sparing effect of 17beta-estradiol in postmenopausal women. *J Bone Miner Res.* 2011; 26:156–168. [PubMed: 20578216]
23. Rao J, Jiang X, Wang Y, Chen B. Advances in the understanding of the structure and function of ER-alpha36, a novel variant of human estrogen receptor-alpha. *J Steroid Biochem Mol Biol.* 2011; 127:231–237. [PubMed: 21888973]
24. Green PS, Yang SH, Nilsson KR, Kumar AS, Covey DF, Simpkins JW. The nonfeminizing enantiomer of 17beta-estradiol exerts protective effects in neuronal cultures and a rat model of cerebral ischemia. *Endocrinology.* 2001; 142:400–406. [PubMed: 11145603]
25. Rajendran KG, Lopez T, Parikh I. Estrogenic effect of phenol red in MCF-7 cells is achieved through activation of estrogen receptor by interacting with a site distinct from the steroid binding site. *Biochem Biophys Res Commun.* 1987; 142:724–731. [PubMed: 3827898]
26. Berthois Y, Katzenellenbogen JA, Katzenellenbogen BS. Phenol red in tissue culture media is a weak estrogen: implications concerning the study of estrogen-responsive cells in culture. *Proc Natl Acad Sci U S A.* 1986; 83:2496–2500. [PubMed: 3458212]
27. Finckbone V, Oomman SK, Strahlendorf HK, Strahlendorf JC. Regional differences in the temporal expression of non-apoptotic caspase-3-positive bergmann glial cells in the developing rat cerebellum. *Front Neuroanat.* 2009; 3:3. [PubMed: 19503747]
28. Gulyaeva NV. Non-apoptotic functions of caspase-3 in nervous tissue. *Biochemistry (Mosc).* 2003; 68:1171–1180. [PubMed: 14640958]
29. Sztiller-Sikorska M, Jakubowska J, Wozniak M, Stasiak M, Czyz M. A non-apoptotic function of caspase-3 in pharmacologically-induced differentiation of K562 cells. *Br J Pharmacol.* 2009; 157:1451–1462. [PubMed: 19627286]
30. Zhao X, Wang D, Zhao Z, Xiao Y, Sengupta S, Zhang R, Lauber K, Wesselborg S, Feng L, Rose TM, Shen Y, Zhang J, Prestwich G, Xu Y. Caspase-3-dependent activation of calcium-independent phospholipase A2 enhances cell migration in non-apoptotic ovarian cancer cells. *J Biol Chem.* 2006; 281:29357–29368. [PubMed: 16882668]
31. Sylvia VL, Walton J, Lopez D, Dean DD, Boyan BD, Schwartz Z. 17 beta-estradiol- BSA conjugates and 17 beta-estradiol regulate growth plate chondrocytes by common membrane associated mechanisms involving PKC dependent and independent signal transduction. *J Cell Biochem.* 2001; 81:413–429. [PubMed: 11255224]
32. Filardo E, Quinn J, Pang Y, Graeber C, Shaw S, Dong J, Thomas P. Activation of the novel estrogen receptor G protein-coupled receptor 30 (GPR30) at the plasma membrane. *Endocrinology.* 2007; 148:3236–3245. [PubMed: 17379646]
33. Levin ER. Cellular Functions of the Plasma Membrane Estrogen Receptor. *Trends Endocrinol Metab.* 1999; 10:374–377. [PubMed: 10511697]
34. Stevis PE, Deecher DC, Suhadolnik L, Mallis LM, Frail DE. Differential effects of estradiol and estradiol-BSA conjugates. *Endocrinology.* 1999; 140:5455–5458. [PubMed: 10537181]
35. Hurst-Kennedy J, Zhong M, Gupta V, Boyan BD, Schwartz Z. 24R,25-Dihydroxyvitamin D3, lysophosphatidic acid, and p53: A signaling axis in the inhibition of phosphate-induced chondrocyte apoptosis. *J Steroid Biochem Mol Biol.* 2010

36. Bryksin AV, Matsumura I. Overlap extension PCR cloning: a simple and reliable way to create recombinant plasmids. *Biotechniques*. 2010; 48:463–465. [PubMed: 20569222]
37. Mosmann T. Rapid colorimetric assay for cellular growth and survival: application to proliferation and cytotoxicity assays. *J Immunol Methods*. 1983; 65:55–63. [PubMed: 6606682]
38. Sylvia VL, Schwartz Z, Del Toro F, DeVeau P, Whetstone R, Hardin RR, Dean DD, Boyan BD. Regulation of phospholipase D (PLD) in growth plate chondrocytes by 24R,25-(OH)2D3 is dependent on cell maturation state (resting zone cells) and is specific to the PLD2 isoform. *Biochim Biophys Acta*. 2001; 1499:209–221. [PubMed: 11341968]
39. Schwartz Z, Sylvia VL, Luna MH, DeVeau P, Whetstone R, Dean DD, Boyan BD. The effect of 24R,25-(OH)(2)D(3) on protein kinase C activity in chondrocytes is mediated by phospholipase D whereas the effect of 1alpha,25-(OH)(2)D(3) is mediated by phospholipase C. *Steroids*. 2001; 66:683–694. [PubMed: 11546556]
40. Sylvia VL, Boyan BD, Dean DD, Schwartz Z. The membrane effects of 17beta-estradiol on chondrocyte phenotypic expression are mediated by activation of protein kinase C through phospholipase C and G-proteins. *J Steroid Biochem Mol Biol*. 2000; 73:211–224. [PubMed: 11070350]
41. Derossi D, Williams EJ, Green PJ, Dunican DJ, Doherty P. Stimulation of mitogenesis by a cell-permeable PI 3-kinase binding peptide. *Biochem Biophys Res Commun*. 1998; 251:148–152. [PubMed: 9790922]
42. Li L, Haynes MP, Bender JR. Plasma membrane localization and function of the estrogen receptor alpha variant (ER46) in human endothelial cells. *Proc Natl Acad Sci U S A*. 2003; 100:4807–4812. [PubMed: 12682286]
43. Marino M, Ascenzi P. Membrane association of estrogen receptor alpha and beta influences 17beta-estradiol-mediated cancer cell proliferation. *Steroids*. 2008; 73:853–858. [PubMed: 18206197]
44. Anania VG, Coscoy L. Palmitoylation of MIR2 is required for its function. *J Virol*. 2011; 85:2288–2295. [PubMed: 21159884]
45. Susin SA, Lorenzo HK, Zamzami N, Marzo I, Snow BE, Brothers GM, Mangion J, Jacotot E, Costantini P, Loeffler M, Larochette N, Goodlett DR, Aebersold R, Siderovski DP, Penninger JM, Kroemer G. Molecular characterization of mitochondrial apoptosisinducing factor. *Nature*. 1999; 397:441–446. [PubMed: 9989411]
46. Razandi M, Pedram A, Merchenthaler I, Greene GL, Levin ER. Plasma membrane estrogen receptors exist and functions as dimers. *Mol Endocrinol*. 2004; 18:2854–2865. [PubMed: 15231873]
47. Cortot A, Armand JP, Soria JC. [PI3K-AKT-mTOR pathway inhibitors]. *Bull Cancer*. 2006; 93:19–26. [PubMed: 16455502]
48. Yap TA, Garrett MD, Walton MI, Raynaud F, de Bono JS, Workman P. Targeting the PI3K-AKT-mTOR pathway: progress, pitfalls, and promises. *Curr Opin Pharmacol*. 2008; 8:393–412. [PubMed: 18721898]
49. LoPiccolo J, Blumenthal GM, Bernstein WB, Dennis PA. Targeting the PI3K/Akt/mTOR pathway: effective combinations and clinical considerations. *Drug Resist Updat*. 2008; 11:32–50. [PubMed: 18166498]
50. Hurst-Kennedy J, Boyan BD, Schwartz Z. Lysophosphatidic acid signaling promotes proliferation, differentiation, and cell survival in rat growth plate chondrocytes. *Biochim Biophys Acta*. 2009; 1793:836–846. [PubMed: 19233232]
51. Pelekanou V, Notas G, Kampa M, Tselierou E, Radojicic J, Leclercq G, Castanas E, Stathopoulos EN. ERalpha36, a new variant of the ERalpha is expressed in triple negative breast carcinomas and has a specific transcriptomic signature in breast cancer cell lines. *Steroids*. 2012; 77:928–934. [PubMed: 22198466]



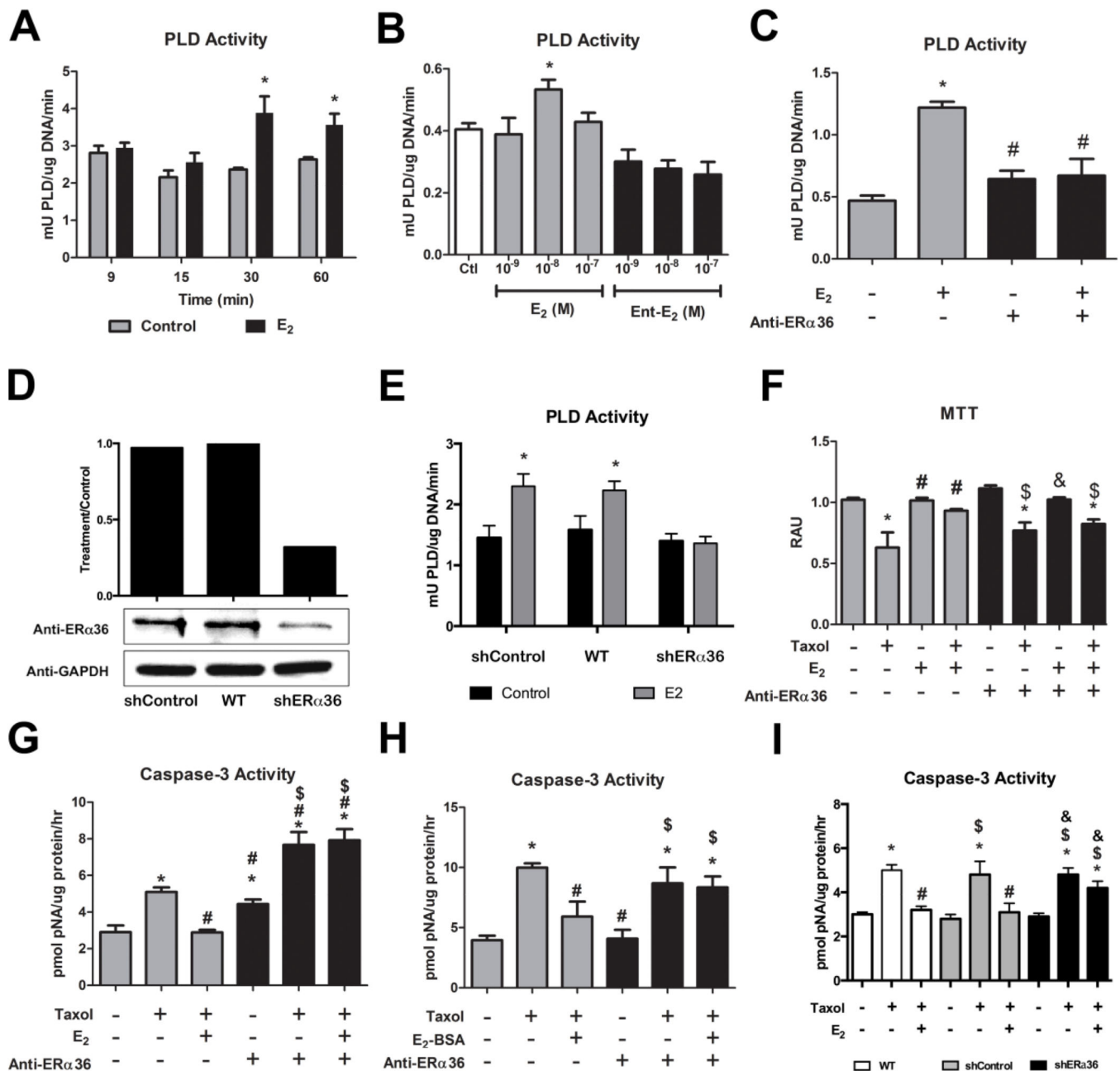
**HIGHLIGHTS**

- We examine the role of ER $\alpha$ 36 in the anti-apoptotic mechanism of estradiol.
- Estradiol promotes anti-apoptosis via ER $\alpha$ 36-signaling in breast cancer cells.
- Estradiol antagonizes common chemotherapeutics and promotes tumor aggressiveness.
- ER $\alpha$ 36 may be a suitable target for novel therapeutics in breast cancer



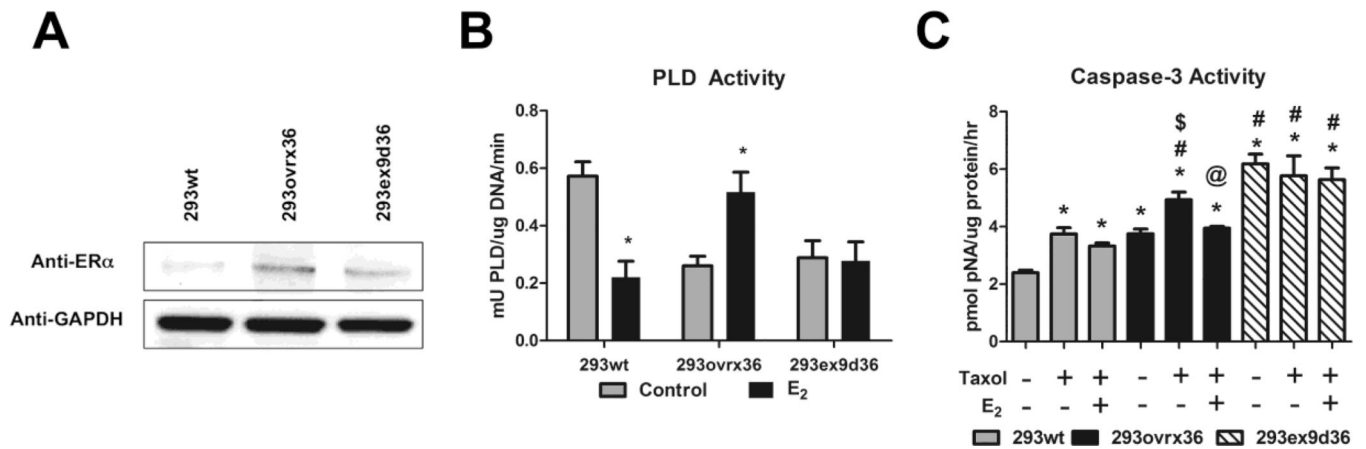
**FIGURE 1. Effect of Taxol on Apoptosis in HCC38 Cells**

(A) Taxol's (0, 5, 10, 20 $\mu\text{M}$ ) effect on TUNEL (24 hours post-treatment) and (B) caspase-3 activity (4 hours post-treatment) is dosedependent. (C) Taxol also increased bax/bcl2 mRNA levels (12 hours post-treatment) and (D) cytochrome C levels in the cytosol versus the mitochondria. \* represents  $p < 0.05$  compared to the untreated control group while # represents  $p < 0.05$  compared to 5 $\mu\text{M}$  taxol.



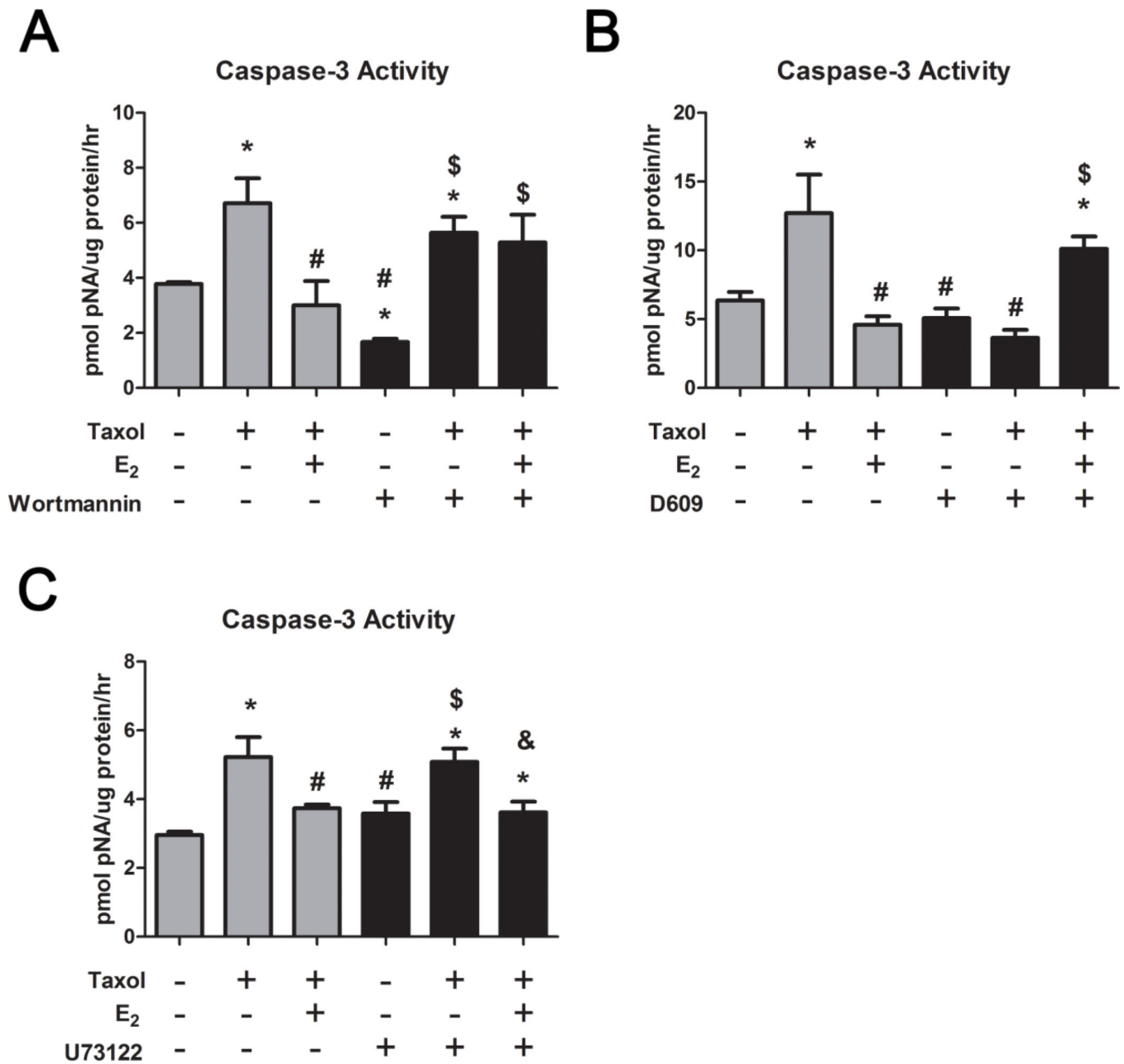
**FIGURE 2. Role of ERα36 in the Effect of E<sub>2</sub> on Phospholipase D Activity and Antiapoptosis**  
 (A) Time course study of the effect of E<sub>2</sub> on PLD activity in HCC38 cells. (B) Dose dependent effect of E<sub>2</sub> on PLD activity after 30 minutes in HCC38 cells. Ent-E<sub>2</sub> showed no ability to enhance PLD at any concentration. (C) Pre-incubation with anti-ERα36 antibodies for 15 minutes inhibited the effect of a 30 minute 10<sup>-8</sup>M E<sub>2</sub> treatment on PLD activity. (D) Using anti-ERα36 antibodies, western blot was performed on whole cell lysates from HCC38 cells transiently transfected with a non-target control shRNA vector (shControl), non-transfected wildtype HCC38 cells (WT), and HCC38 cells transiently transfected with ERα36 shRNA vector (shERα36). Densitometry analysis showed greater than 70% knockdown of ERα36 protein levels in the shERα36 cells compared to wildtype controls.

All samples were normalized to GAPDH. (E) Transient transfection of HCC38 cells with ER $\alpha$ 36 shRNA expression plasmid blocks the effect of E<sub>2</sub> on PLD activity after 30 minutes. \* represents p<0.05 compared to the corresponding untreated control group while # represents p<0.05 compared to E<sub>2</sub>-treatment. (F) MTT is reduced by 20 $\mu$ M taxol, while this effect is prevented by 10<sup>-8</sup>M E<sub>2</sub>. ER $\alpha$ 36 antibodies block this effect of E<sub>2</sub>. (G) Taxol-induced (20 $\mu$ M) caspase-3 activity is reduced by 10<sup>-8</sup>M E<sub>2</sub>, while ER $\alpha$ 36 antibodies block this effect. (H) Taxol-induced (20 $\mu$ M) caspase-3 activity is reduced by 10<sup>-8</sup>M E<sub>2</sub>-BSA, while ER $\alpha$ 36 antibodies block this effect. (I) While E<sub>2</sub> inhibits taxol-induced caspase-3 activity in wildtype HCC38 cells, HCC38 cells transiently transfected with shER $\alpha$ 36 expression plasmids did not show the same effect. \* represents p<0.05 compared to the untreated control group while # represents p<0.05 compared to 20 $\mu$ M taxol and \$ represents p<0.05 compared to anti-ER $\alpha$ 36 or shER $\alpha$ 36 alone.

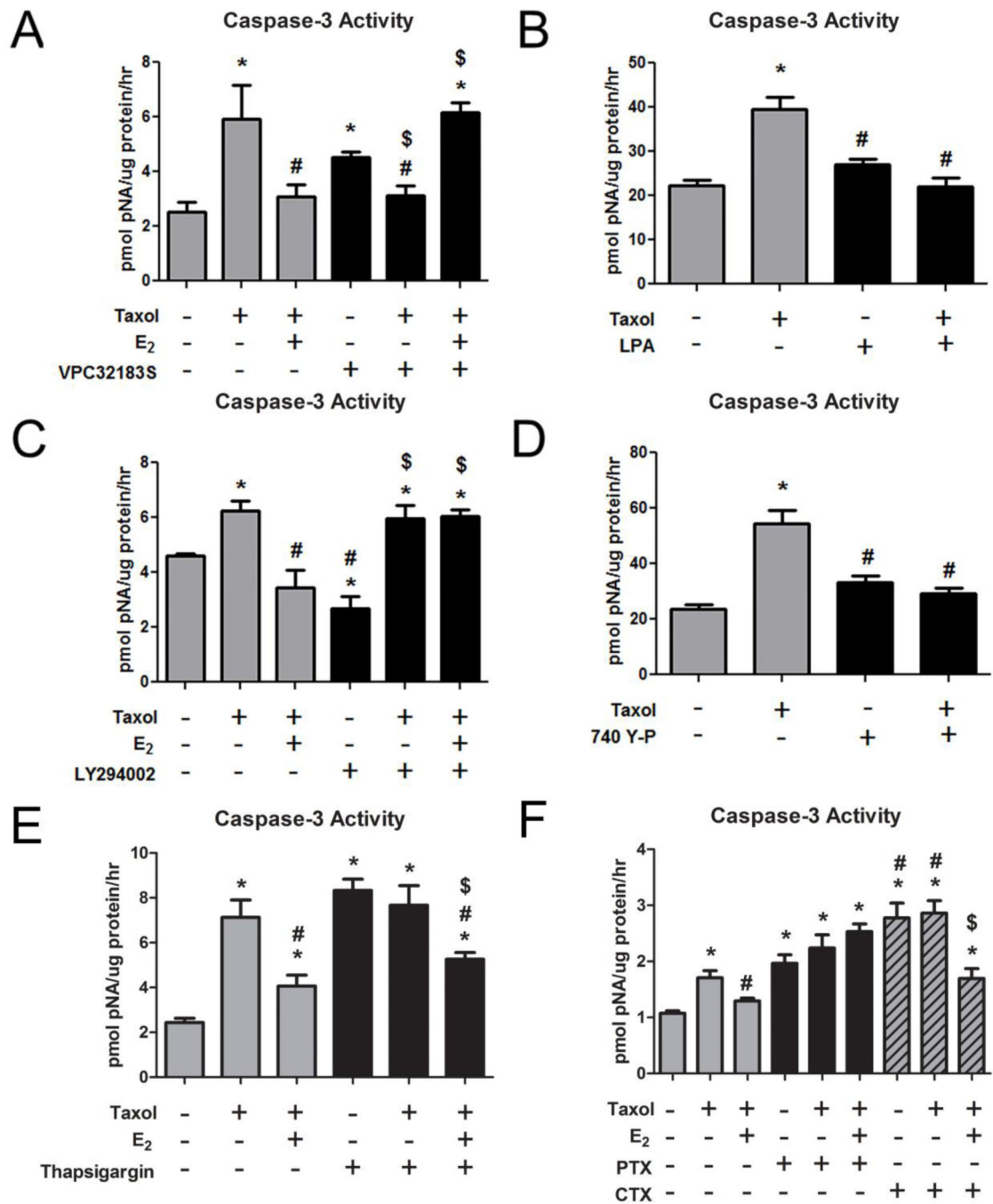


**FIGURE 3. Requirement of Exon 9 in the Anti-apoptotic Effect of E<sub>2</sub>**

(A) Using a single monoclonal anti-ER $\alpha$  antibody from Abcam that recognizes all three splice variants, ER $\alpha$ 66, ER $\alpha$ 46, and ER $\alpha$ 36, western blots were performed on whole cell lysates from wildtype HEK293 cells (293wt), and HEK293 transiently transfected to overexpress wildtype ER $\alpha$ 36 cDNA (293ovrx36) and exon 9-deleted ER $\alpha$ 36 cDNA (293ex9d36). (B) PLD activity is reduced with 10<sup>-8</sup>M E<sub>2</sub> wildtype HEK293 cells, while E<sub>2</sub> increases PLD activity in ER $\alpha$ 36 overexpressed HEK293 cells. In cells overexpressing exon 9-deleted ER $\alpha$ 36, E<sub>2</sub> did not exhibit this effect. \* represents p<0.05 compared to the corresponding untreated control group. (C) ER $\alpha$ 36 overexpression mediated the anti-apoptotic effect of E<sub>2</sub> against taxol-induced caspase-3 activity, but in cells with exon 9-deleted ER $\alpha$ 36, this effect was not evident. \* represents p<0.05 compared to the corresponding untreated 293wt, # represents p<0.05 compared to taxol only in 293wt, \$ represents p<0.05 compared to untreated 293ovrx36, and @ represents p<0.05 compared to taxol only in 293ovrx36.



**FIGURE 4. Role of Phospholipases in the Anti-apoptotic Effect of E<sub>2</sub> in HCC38 Cells**  
 (A) Taxol-induced (20 $\mu$ M) caspase-3 activity is reduced by 10<sup>-8</sup>M E<sub>2</sub>, while wortmannin blocks this effect. (B) D609 and (C) U73122 do not exhibit the same effect as wortmannin. \* represents p<0.05 compared to the untreated control group while # represents p<0.05 compared to 20 $\mu$ M taxol, \$ represents p<0.05 compared to inhibitor alone, and & represents p<0.05 compared to inhibitor and taxol

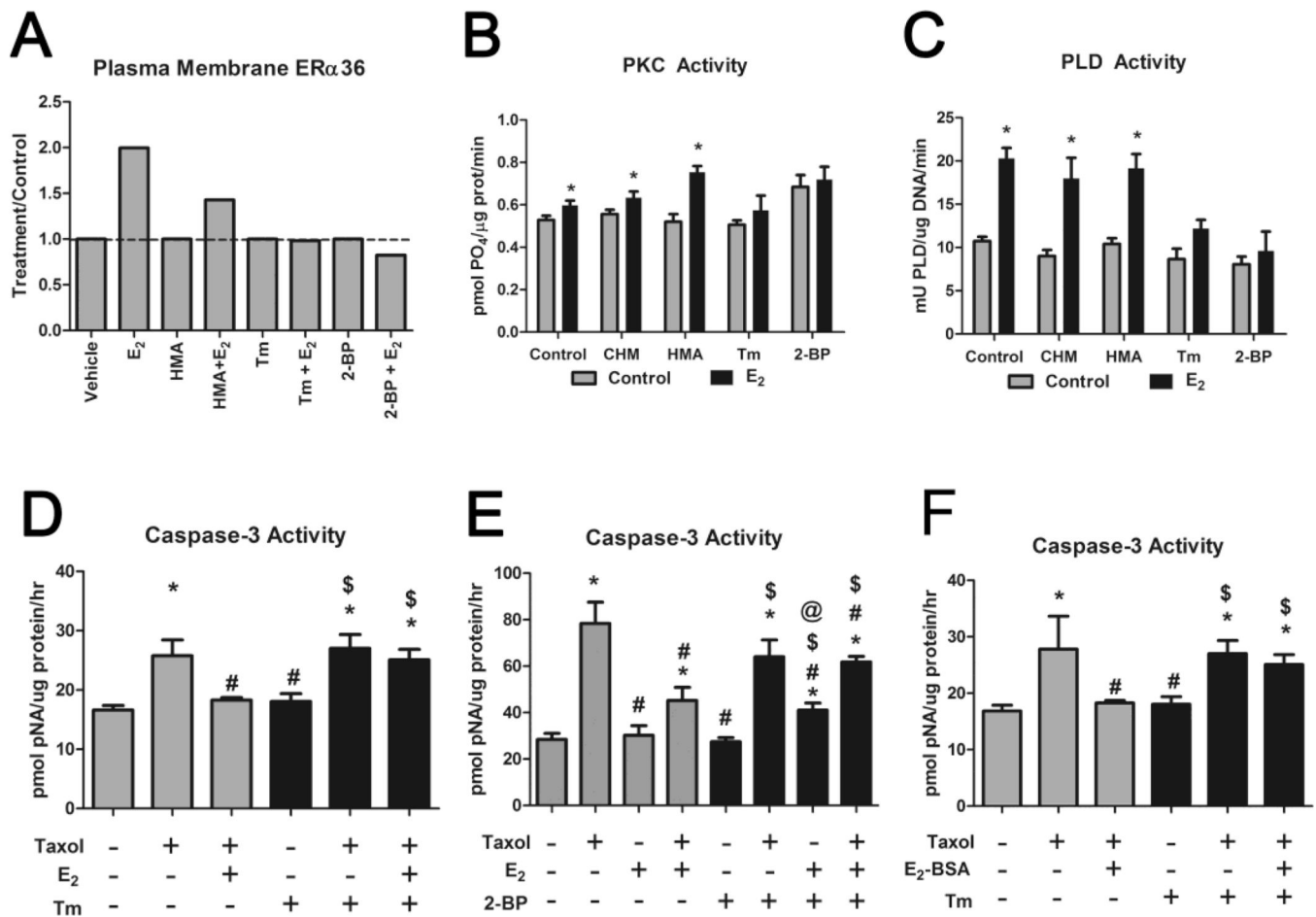


**FIGURE 5. Role of LPA, PI3K, Ca<sup>++</sup>, and G-protein Signaling in the Anti-apoptotic Effect of E<sub>2</sub> in HCC38 Cells**

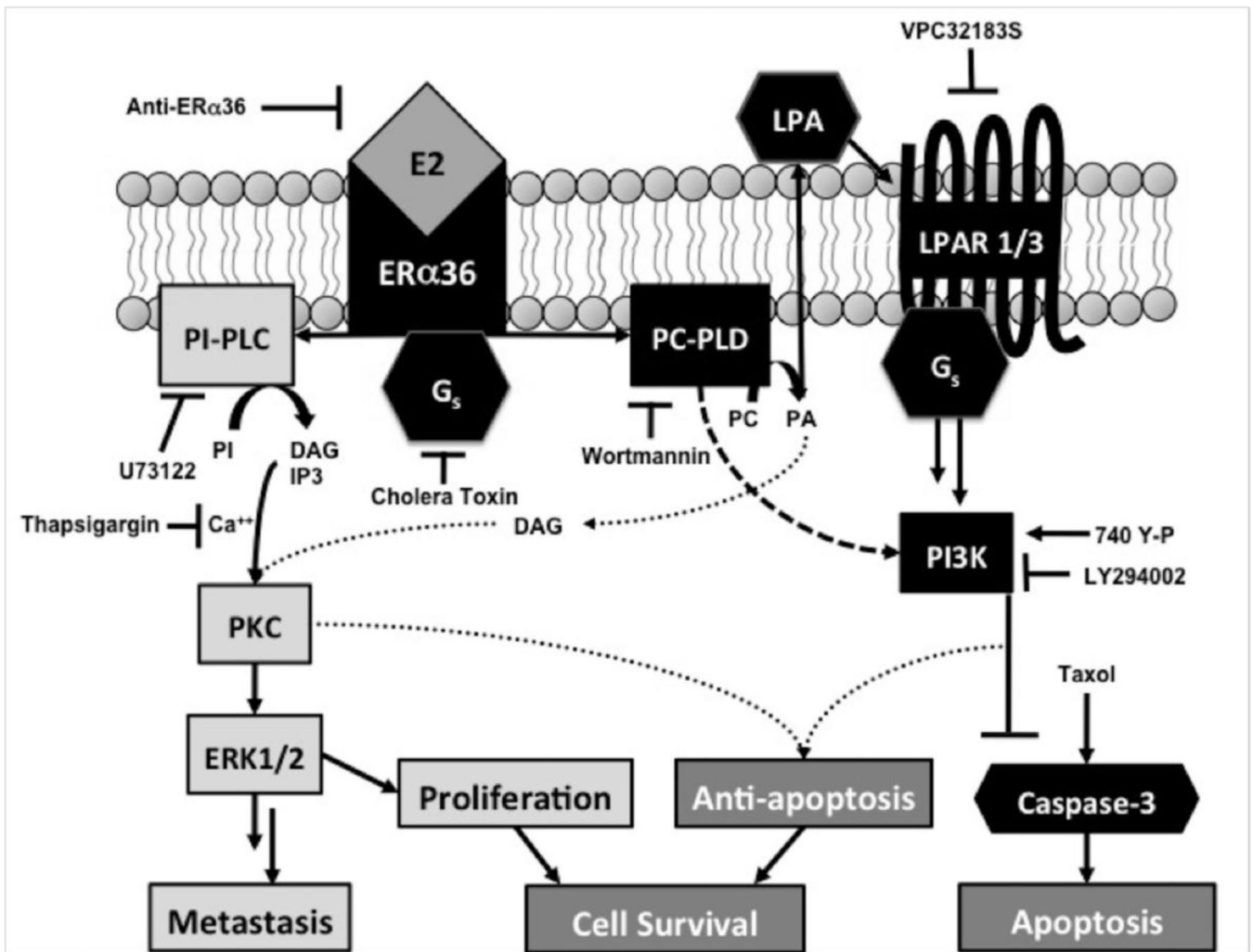
(A) Taxol-induced (20 $\mu$ M) caspase-3 activity is reduced by 10<sup>-8</sup>M E<sub>2</sub>, while the LPAR1/3 antagonist, VPC32183S, does not allow E<sub>2</sub> to block the effect of taxol. \* represents p<0.05 compared to the untreated control group while # represents p<0.05 compared to 20 $\mu$ M taxol and \$ represents p<0.05 compared to inhibitor alone. (B) Taxol-induced (20 $\mu$ M) caspase-3 activity is reduced by LPA. \* represents p<0.05 compared to the untreated control group while # represents p<0.05 compared to 20 $\mu$ M taxol. (C) Taxol-induced (20 $\mu$ M) caspase-3 activity is reduced by 10<sup>-8</sup>M E<sub>2</sub>, while the LY294002 does not allow E<sub>2</sub> to block the effect

of taxol. \* represents  $p < 0.05$  compared to the untreated control group while # represents  $p < 0.05$  compared to  $20\mu\text{M}$  taxol and \$ represents  $p < 0.05$  compared to inhibitor alone. (D) Taxol-induced ( $20\mu\text{M}$ ) caspase-3 activity is reduced by the PI3K activator 740 Y-P. (E) Taxol-induced ( $20\mu\text{M}$ ) caspase-3 activity is reduced by  $10^{-8}\text{M}$   $\text{E}_2$ , while thapsigargin enhances caspase-3 activity alone and this is also reduced by  $\text{E}_2$ . (F) Taxol-induced ( $20\mu\text{M}$ ) caspase-3 activity is reduced by  $10^{-8}\text{M}$   $\text{E}_2$ , while pertussis toxin and cholera toxin both enhance caspase-3 activity alone. The effect of CTX is reduced by  $\text{E}_2$ . \* represents  $p < 0.05$  compared to the untreated control group while # represents  $p < 0.05$  compared to  $20\mu\text{M}$  taxol and \$ represents  $p < 0.05$  compared to inhibitor alone.





**FIGURE 6. Role of Palmitoylation in the Anti-apoptotic Effect of E<sub>2</sub> in HCC38 Cells**  
 (A) Western blot of PM fractions of HCC38 cells treated with 10<sup>-8</sup>M E<sub>2</sub> for 9 minutes, pre-treated with 0.5mM 2-hydroxymyristic acid (HMA), which inhibits myristoylation, 30μM tunicamycin (Tm), which inhibits N-glycosylation and palmitoylation, or 10μM 2-bromopalmitate (2-BP), which inhibits palmitoylation, for 2 hours indicates that ER $\alpha$ 36 membrane-association occurs rapidly and is blocked by Tm and 2-BP. (B,C) Tm and 2-BP prevent the effect of 10<sup>-8</sup>M E<sub>2</sub> on (B) PKC activation after 9 minutes and (C) PLD activation after 30 minutes. \* represents p<0.05 compared to corresponding untreated control. (D,E) Taxol-induced (20μM) caspase-3 activity is reduced by 10<sup>-8</sup>M E<sub>2</sub>, while (D) Tm (30μM) and (E) 2-BP (10μM) block this effect. (F) Taxol-induced (20μM) caspase-3 activity is reduced by 10<sup>-8</sup>M E<sub>2</sub>-BSA, while Tm (30μM) blocked this effect. \* represents p<0.05 compared to the untreated control group while # represents p<0.05 compared to 20μM taxol and \$ represents p<0.05 compared to inhibitor (Tm or 2-BP) alone. @ represents p<0.05 compared to taxol and 2-BP alone.



**FIGURE 7. Proposed Mechanism by which E<sub>2</sub> Promotes Cancer Cell Survival**

E<sub>2</sub> signaling through membrane-associated ERα36 activates two pathways, mediating the proliferative effect through a G-protein-PLC-PKC specific pathway and the anti-apoptotic effect through PLD-LPAPI3K specific pathway. Cross-talk can occur between these pathways as PLD can activate PKC via DAG and calcium-dependent PKC can also mediate anti-apoptosis.