

VOLUME 286 (2011) PAGES 30972–30980

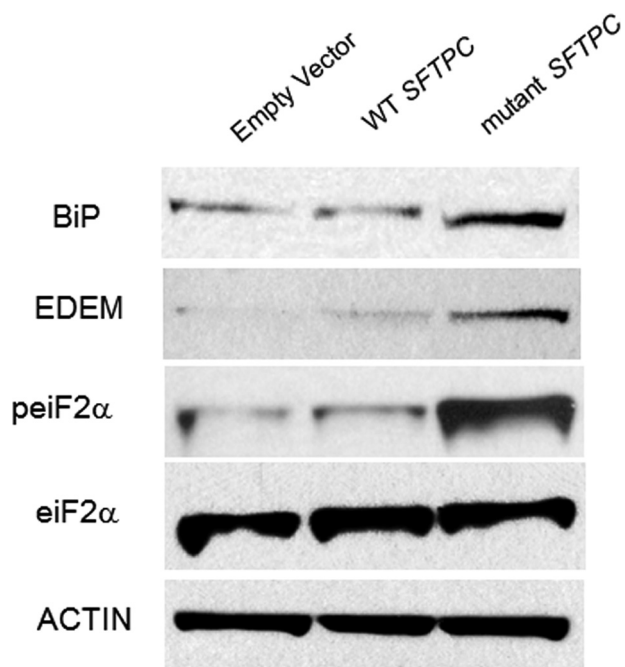
DOI 10.1074/jbc.A110.181164

## Alveolar epithelial cells undergo epithelial-to-mesenchymal transition in response to endoplasmic reticulum stress.

Harikrishna Tanjore, Dong-Sheng Cheng, Amber L. Degryse, Donald F. Zoz, Rasul Abdolrasulnia, William E. Lawson, and Timothy S. Blackwell

PAGE 30974:

The same Western blot images were mistakenly used to represent phosphorylated eIF2 $\alpha$  (peIF2 $\alpha$ ) in both RLE6TN cells that had not been transfected (Fig. 1*B*) and in cells that had been transfected with empty vector or with vectors expressing wild type or mutant surfactant protein C (Fig. 1*C*). The correct Western blot image for phosphorylated eIF2 $\alpha$  in transfected cells that we have obtained from a new experiment is shown in the revised Fig. 1*C*. This change does not affect the interpretation of the results or the conclusions of this work.



Authors are urged to introduce these corrections into any reprints they distribute. Secondary (abstract) services are urged to carry notice of these corrections as prominently as they carried the original abstracts.