



## Research

**Cite this article:** Kingsolver JG, Buckley LB. 2015 Climate variability slows evolutionary responses of *Colias* butterflies to recent climate change. *Proc. R. Soc. B* **282**: 20142470. <http://dx.doi.org/10.1098/rspb.2014.2470>

Received: 8 October 2014

Accepted: 23 December 2014

**Subject Areas:**

evolution, ecology

**Keywords:**

climate change, *Colias* butterflies, environmental variation, evolution, natural selection, biophysical models

**Author for correspondence:**

Joel G. Kingsolver

e-mail: [jgking@bio.unc.edu](mailto:jgking@bio.unc.edu)

Electronic supplementary material is available at <http://dx.doi.org/10.1098/rspb.2014.2470> or via <http://rspb.royalsocietypublishing.org>.

# Climate variability slows evolutionary responses of *Colias* butterflies to recent climate change

Joel G. Kingsolver<sup>1</sup> and Lauren B. Buckley<sup>2</sup>

<sup>1</sup>Department of Biology, University of North Carolina, Chapel Hill, NC 27599, USA

<sup>2</sup>Department of Biology, University of Washington, Seattle, WA 98195, USA

How does recent climate warming and climate variability alter fitness, phenotypic selection and evolution in natural populations? We combine biophysical, demographic and evolutionary models with recent climate data to address this question for the subalpine and alpine butterfly, *Colias meadii*, in the southern Rocky Mountains. We focus on predicting patterns of selection and evolution for a key thermoregulatory trait, melanin (solar absorptivity) on the posterior ventral hindwings, which affects patterns of body temperature, flight activity, adult and egg survival, and reproductive success in *Colias*. Both mean annual summer temperatures and thermal variability within summers have increased during the past 60 years at subalpine and alpine sites. At the subalpine site, predicted directional selection on wing absorptivity has shifted from generally positive (favouring increased wing melanin) to generally negative during the past 60 years, but there is substantial variation among years in the predicted magnitude and direction of selection and the optimal absorptivity. The predicted magnitude of directional selection at the alpine site declined during the past 60 years and varies substantially among years, but selection has generally been positive at this site. Predicted evolutionary responses to mean climate warming at the subalpine site since 1980 is small, because of the variability in selection and asymmetry of the fitness function. At both sites, the predicted effects of adaptive evolution on mean population fitness are much smaller than the fluctuations in mean fitness due to climate variability among years. Our analyses suggest that variation in climate within and among years may strongly limit evolutionary responses of ectotherms to mean climate warming in these habitats.

## 1. Introduction

Numerous studies have documented biological responses to recent changes in climate, including changes in seasonal timing, migration, phenotypic plasticity, geographic distribution and range edges, population abundances and habitat use [1]. For organisms with limited potential for migration, evolution may also enable important responses that allow populations to adapt to local and changing climates. Evolutionary responses to recent climate change have been documented in several systems, for phenotypic traits that include seasonal timing [2–4], coloration [5] and thermal sensitivity [6,7]. These studies demonstrate that organisms can evolve in response to climate warming over the timescale of one to a few decades. Conversely, other historical studies have failed to detect evolutionary responses to climate change [1,8]. One limitation is that such historical studies do not provide a quantitative, mechanistic understanding of how specific aspects of climate variation and change affect the dynamics of phenotypic selection and microevolution of traits over time. In addition, the fitness consequences of such evolution are poorly understood: how much does adaptation to environmental change improve mean population fitness [9]?

A theoretical framework for describing evolutionary responses to sustained, directional environmental change (including climate change) is now well established [10,11]. These models consider stabilizing selection towards some optimal trait value, where the optimal trait value changes directionally with time. In this

scenario, the mean trait value lags behind the optimal value, generating selection and (potentially) evolution of the population; if the lag becomes too great, the population will go extinct. The degree of evolutionary adaptation and the probability of extinction depend on the rate of environmental change, genetic and phenotypic variation, and environmental and demographic stochasticity [11]. These general models have provided important qualitative insights into the factors that influence adaptation and extinction in response to climate warming. However, predicting these responses for specific empirical systems requires a quantitative understanding of how climate determines optimal trait values, fitness functions and selection. The few applications of these models to empirical systems demonstrate that trait evolution can maintain fitness and distributions during climate change [12].

Climate change is expected to increase environmental variation in addition to shifting mean environmental conditions [13]. This variation, both within and across generations, drives fluctuations in selection [14,15], which can slow evolution in response to directional environmental change. This effect is complicated by fitness integrating environmental responses at multiple timescales. Fitness of our focal thermoregulatory trait—wing melanin—integrates responses to chronic environmental conditions (via time available for flight) and acute thermal stress events (via overheating and declines in egg viability). Geographic differences in wing melanin are important for thermal adaptation to climate in a number of butterfly species [16–19].

In this study, we explore selection and evolution of wing melanin in the alpine and subalpine butterfly, *Colias meadii*, in the southern Rocky Mountains (USA). Many species in these habitats are adapted to local climate conditions and have limited potential for large-scale migration and gene flow. We integrate microclimate, biophysical and demographic models to map phenotype onto fitness in different and variable climatic conditions. We combine these with a simple quantitative genetic model to predict selection and evolutionary responses to climate change. Our analyses have three main goals. First, we predict fitness functions, selection and evolutionary responses in wing melanin in relation to climate changes in this region during the past 50–60 years. Second, we compare the temporal patterns of selection and evolution at subalpine and alpine sites. Third, we evaluate how population mean fitness at these sites changes with time, and whether evolutionary adaptation can increase mean fitness or reduce variance in mean fitness over time. Our results suggest that climate changes can generate substantial directional selection on this trait, but that stochastic variability in climate strongly limits the evolutionary responses to this selection.

## 2. Material and methods

### (a) Study system and thermal biology

We consider *C. meadii*, a species native to the mountains of western North America. In the southern Rocky Mountains, *C. meadii* occurs in alpine and subalpine habitats at elevations between 2900 and 4300 m. It has an obligate larval diapause and a single adult flight season in July–August each year. Here, we focus on subalpine and alpine populations in the lower and middle parts of its elevational range in Colorado. We chose this species in part because of the availability of phenotypic data on key thermoregulatory traits collected in 1980 [20]. We emphasize that our analyses are intended to be representative of the responses of this

species in subalpine and alpine regions in Colorado, rather than to predict responses at specific locales.

*Colias* are strong flyers, and active flight is essential for courtship and mating, nectaring, oviposition and other activities [21–23]. Flight activity is restricted to body temperatures between 27 and 40°C and flight performance is greatest at 33–38°C [16,20] (H. MacLean 2014, unpublished data). The thermal sensitivity of flight is similar for different populations and species of *Colias*. Adults behaviourally thermoregulate to achieve the body temperatures needed for flight, and do not use endogenous heat production to elevate body temperatures [16]. *Colias* use a lateral basking posture with the wings closed and the ventral hindwing (VHW) surfaces oriented perpendicular to the sun to increase body temperatures. At body temperatures above 40°C, butterflies stop flying and use a heat-avoidance posture with the body and wings oriented parallel to the sun; they also crawl down into the vegetation to avoid direct solar radiation.

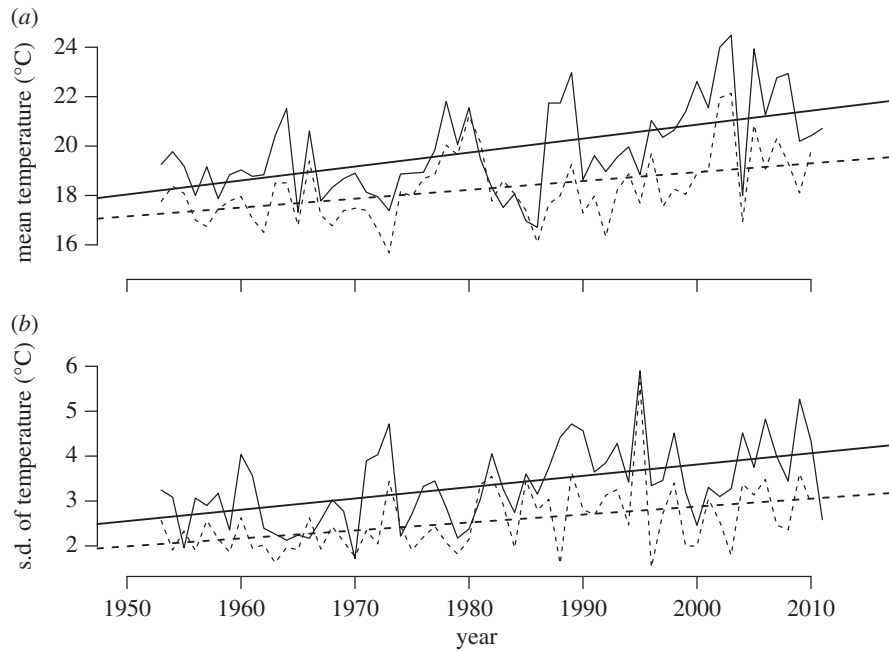
*Colias* populations and species are adapted to local climates through two key morphological, thermoregulatory traits [16,24,25]: the degree of melanism on the VHWs (determining solar absorptivity); and the length of setae on the thorax (fur thickness). Wing absorptivity is determined by the relative proportions of melanic (black) and pteridine (yellow or orange) scales [26]. *Colias* populations and species from higher elevations and latitudes have greater wing solar absorptivity and thoracic fur thickness, enabling them to achieve the elevated body temperatures needed for flight even under cool environmental conditions [20,27]. Extreme high temperature can also affect survival and fecundity. For example, a daily heat shock at 45°C significantly reduced adult lifespan and caused a fourfold reduction in egg production [28]. Importantly, *Colias* adults may be exposed to short intervals of deleteriously high body temperatures (more than 40°C) even at high elevation where temperature variation can be substantial [28].

### (b) Climate and microclimate

We used daily maximum and minimum temperature data from two weather stations, to represent climate conditions at the lower (subalpine) and middle (alpine) parts of the elevational range of *C. meadii* in Colorado. Data for the subalpine site (site C1: 3048 m, 40.03 N, 105.55 W) derive from the Niwot Ridge LTER (<http://niwot.colorado.edu>) that were cleaned and filled [29]. Data for the alpine site (Climax: 3514 m, 39.38 N, 106.20 W) derive from the National Weather Service Cooperative (COOP) Program. We estimated air temperatures ( $T_a$ ) at 10 min intervals using a diurnal temperature variation function incorporating sine and exponential components [30]. For simplicity, we refer to C1 as the subalpine site, and Climax as the alpine site.

Global horizontal solar radiation was calculated as a function of elevation, latitude and longitude by discounting global extraterrestrial radiation [31]. Radiation was then partitioned into direct and diffuse components as a function of the atmospheric transmissivity  $\tau$  (ratio of global horizontal solar radiation at surface and calculated global extraterrestrial (top of atmosphere) horizontal solar radiation). Tau distributions were estimated hourly using several years of data from the NREL Solar Radiation Research Laboratory Baseline Measurement System in Golden, CO, USA (1829 m, 39.74 N, 105.18 W [http://www.nrel.gov/midc/srrl\\_bms/](http://www.nrel.gov/midc/srrl_bms/)). We used kernel density estimation to simulate a  $\tau$  value for each time interval. Solar radiation was partitioned using an empirical relationship [32] as modified for high-altitude sites in Colorado [33].

We implemented a microclimate model [34–36] using finite-difference methods to solve heat balance equations describing soil temperatures at the surface and specified depths. We scaled microclimate variables to plant heights of 0.2 and 0.5 m by estimating temperature and windspeed profiles [31] using data collected at heights spanning 0.05–1.5 m in July 2012 at the subalpine site (see electronic supplementary material). Based on weather station data



**Figure 1.** (a) Both the mean and (b) s.d. of daily maximum temperatures during July have increased between 1955 and 2010 for the subalpine (solid lines) and alpine (dashed lines) sites in Colorado.

from July 2011 at this site, the mean windspeed at 0.5 m height was  $0.4 \text{ m s}^{-1}$ . We used this value in our models for both sites. Because alpine sites can have higher windspeeds than subalpine sites (depending on local topography), our model predictions may underestimate optimal wing absorptivities at the alpine site (see Results).

### (c) Biophysical and demographic models: connecting climate, traits and fitness

We use a steady-state heat flux model for *Colias* that was developed and field validated by Kingsolver [20,21] to predict thoracic body temperature (operative environmental temperature,  $T_e$ ) based on thermoregulatory traits (body size, basal ventral hind wing solar absorptivity and thoracic fur thickness), behavioural posture (basking and heat-avoidance) and environmental conditions [37]. The range of possible values of wing absorptivity  $\alpha$  in *Colias* is from 0.4 (all yellow pteridine scales) to 0.7 (all black melanic scales). For both subalpine (C1) and alpine (Climax) sites, we assume a fur thickness of 1.46 mm and thorax diameter of 3.6 mm, based on measurements for *C. meadii* at several sites in Colorado [20]. We assume that butterflies select the body temperature closest to their thermal optima ( $35^\circ\text{C}$ ) with available body temperatures bracketed by those in full sun and full shade (no direct radiation). The model successfully predicts patterns of  $T_e$ , flight activity time and heat-avoidance in the field for *C. meadii* and other *Colias* species along an elevational gradient in Colorado [20,38]. Predictions of  $T_e$  are updated every 10 min.

Buckley & Kingsolver [37] used this biophysical model together with a demographic model to connect climate and thermoregulatory traits to predictions of fitness (net reproductive rate,  $\lambda$ ) (see electronic supplementary material for details). We calculate daily egg production per female as the product of available flight time and the rate of oviposition. We estimated the probability of flight as a plateauing function of operative environmental temperatures,  $T_e$ :  $P_{\text{flight}} = \exp(-0.5 \times (\text{abs}(T_e - 33.5))/5)^{3.5}$ . The function is based on flight data for *Colias eriphyle* in Montrose, CO [39]. Lab experiments show that high body temperatures can reduce the viability of oocytes in female *Colias* [28]. We incorporate egg viability as a function of body temperature, modelled as an exponential decay from 1 at  $40^\circ\text{C}$  to 0.75 at  $50^\circ\text{C}$  [28]. We multiply daily egg production by the average of hourly viability estimates. We estimate  $\lambda$  by summing over days to either a duration of 5 days, reflecting the mean

adult life span in the field [40,41], or reaching a maximum lifetime egg production of 700 [39] as the product of survival to maturity, daily survival and egg production. We simulated 500 individuals with a uniform probability of initiating adulthood across a single annual generation with a single summer flight season [37].

### (d) Selection and evolution models

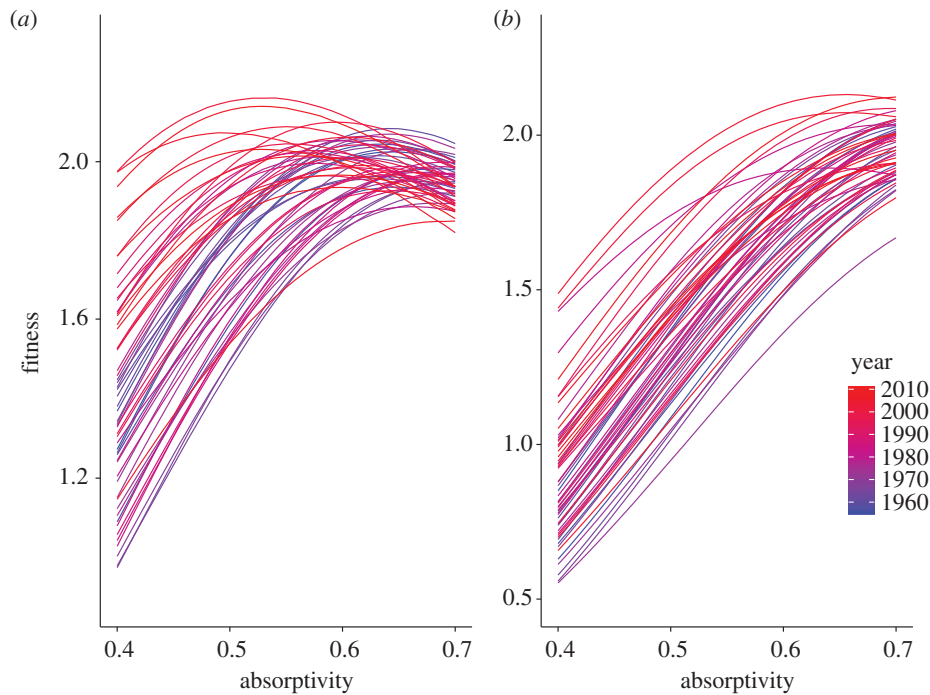
Our microclimate, biophysical and demographic models allow us to predict the fitness  $\lambda$  of an individual *Colias* as a function of climate variables and thermoregulatory traits. We use a simple quantitative genetic model to predict selection and evolution of solar absorptivity  $\alpha$  of the VHW in response to climate. We used estimates of the phenotypic mean of  $\alpha$  for *C. meadii* (0.649) reported by Kingsolver [20,21] for population samples taken in 1980. Ellers & Boggs [42] used parent-offspring breeding experiments to estimate the narrow-sense heritability  $h^2$  of  $\alpha$  for *C. eriphyle*, yielding  $h^2 = 0.43$  for males and 0.36 for females [43]; we use a value of 0.40 in our simulations. We assume that selection is sufficiently weak that the heritability and phenotypic and genetic variances do not change with time [11]. We used more extensive recent sampling to estimate the standard deviation of  $\alpha$  as 0.062 (H. MacLean 2014, unpublished results). Additional simulations (not shown) demonstrate that the precise values of  $h^2$  or phenotypic variance have little effect on our quantitative or qualitative results. We also assume that thermal conditions do not produce phenotypically plastic changes in  $\alpha$  (see Discussion).

Our models predict the fitness function relating solar absorptivity  $\alpha$  to fitness for a given site and year. Combined with estimates of the phenotypic mean and variance, we can estimate the (unstandardized) directional selection gradient  $\beta$  for  $\alpha$ , and use the heritability  $h^2$  to predict the evolutionary response to selection (change in mean phenotype) in the next generation [44].

## 3. Results

### (a) Changes in climate

The monthly mean of daily maximum temperatures in July has increased significantly at both sites (0.6 and  $0.4^\circ\text{C}/\text{decade}$ , for the subalpine and alpine sites, respectively) during the past 55 years (figure 1a), in agreement with previous climatic



**Figure 2.** The predicted fitness functions for *C. meadii* exhibit variation and shifts in position and height between 1955 (blue) and 2010 (red). (a) Subalpine site. (b) Alpine site.

analyses in this region [29]. The variation in temperature among years at each site is striking. Indeed, the total increase in mean daily maximum temperatures over the past 50 years (3 and 2°C, for the subalpine and alpine sites, respectively) from 1955 to 2010 at each site is similar in magnitude to the standard deviation among years around that warming trend (1.57 and 1.28°C, respectively). The within-year variation (standard deviation) in July daily maximum temperature has also increased significantly during the past 60 years (figure 1b), again with substantial variation among years; and the within-year standard deviation is larger than the mean warming at each site and is particularly pronounced at the subalpine site. As a result, we must consider climate warming at these sites in the context of the substantial temporal variation in climate within and among years.

### (b) Fitness functions

At the subalpine site (figure 2a), fitness functions have generally shifted towards the left between 1955 and 2010, towards lower optimal  $\alpha$  and higher maximal fitnesses. However, there is substantial year-to-year variation in the position and height of the fitness functions (figure 2a). Fitness functions at the alpine site show a different pattern (figure 2b). In most years, fitness at the alpine site increased monotonically with absorptivity, yielding an optimal  $\alpha$  of 0.70 (figure 2b). Conversely, in many years, values of  $\alpha$  below 0.55 yielded fitness values below replacement rate (i.e.  $\lambda < 1.0$ ). As a result, increased wing melanin has generally been favoured at this site during the past 60 years.

### (c) Selection, evolution and mean fitness

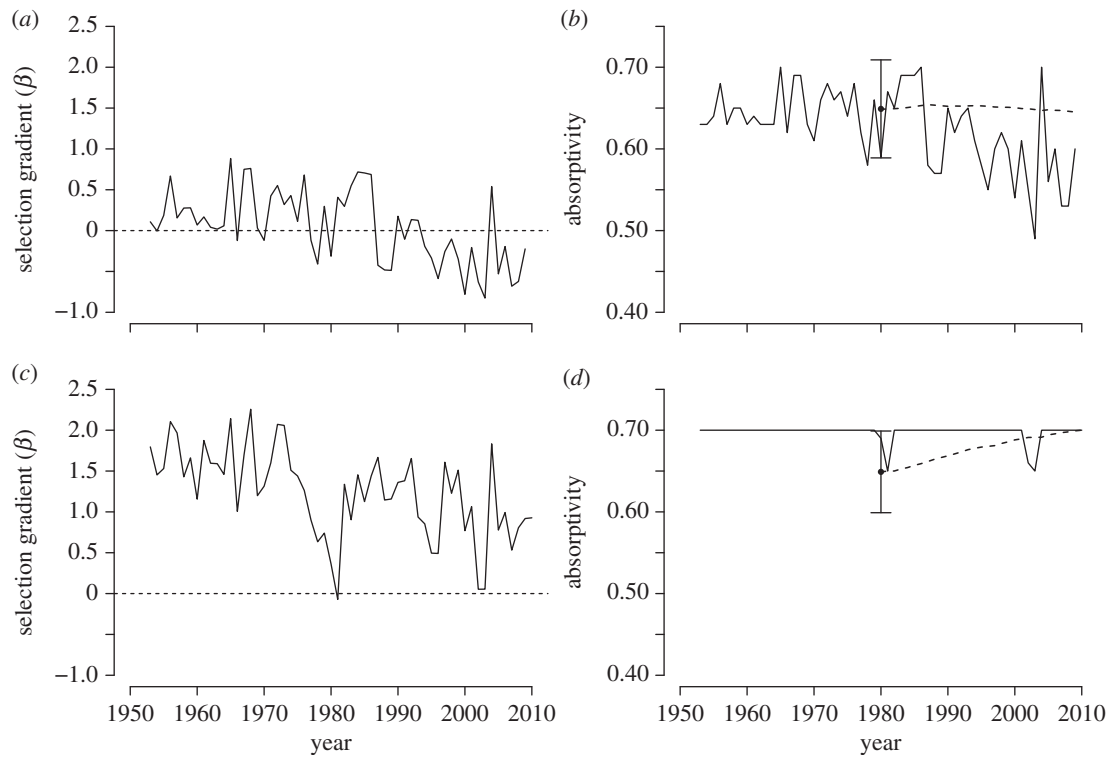
We next use these fitness functions to predict temporal patterns of directional selection and evolutionary responses (see Material and methods). At the subalpine site (figure 3a,b), the directional selection gradient  $\beta$  has declined substantially. The selection gradient for  $\alpha$  was consistently positive (selection

for increased wing melanin) from 1955 to 1975, but was negative (selection for decreased wing melanin) during most years from 1987 to 2010 (figure 3b). We predicted little evolutionary change in mean  $\alpha$  during the period from 1980 to 2010, largely because of the fluctuations in the direction and magnitude of directional selection (figure 3a,b).

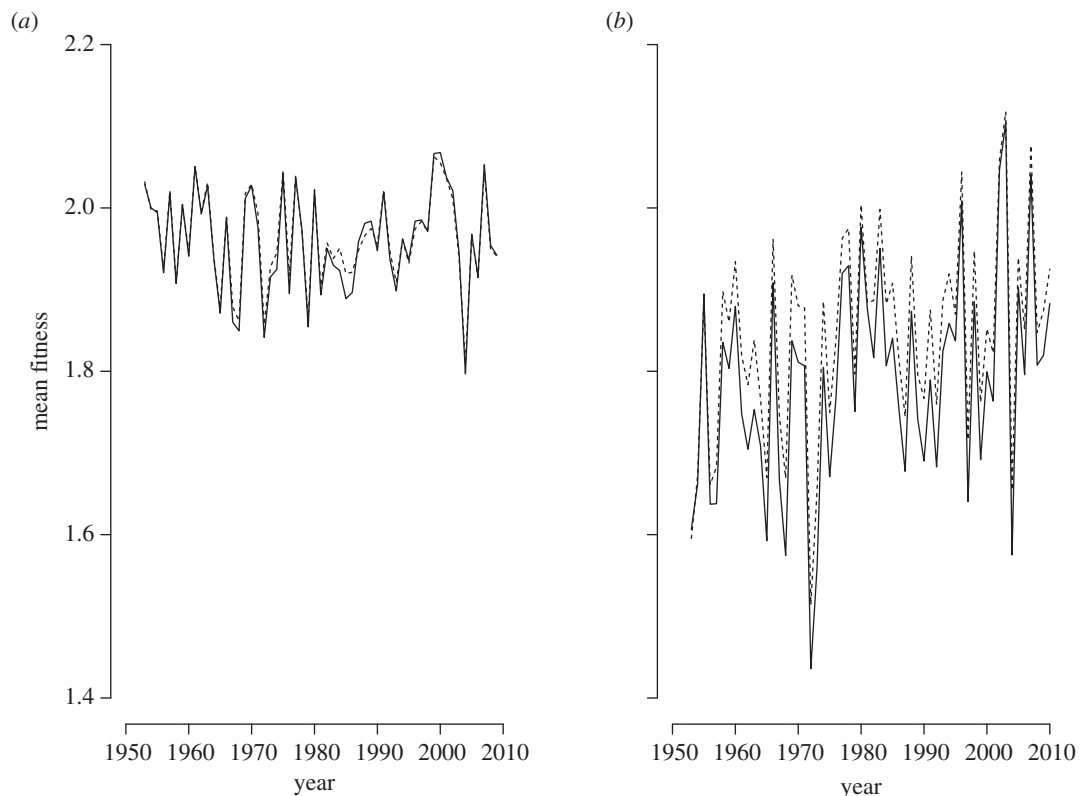
The predicted directional selection gradient for  $\alpha$  also declined at the alpine site (figure 3c,d). However, directional selection was always positive (selection for increased wing melanin), reflecting the fact that the optimal  $\alpha$  was 0.7 for nearly all years during this period. The magnitude of selection varied strongly among years, but was generally greater at the alpine (figure 3c) than at the subalpine (figure 3a) site. Our 1980 empirical estimate of  $\alpha$  below the predicted optima resulted in the prediction that  $\alpha$  would increase rapidly until 2010, as a result of the strong directional selection.

### (d) Fitness consequences of climate change and evolution

Both the subalpine and alpine sites had substantial variability in predicted mean fitness among years (figure 4). In general, overall mean fitness was 6–8% higher and variation (standard deviation) in mean fitness was 37–48% lower at the subalpine compared with the alpine site. Mean fitness increased significantly with time at the alpine site ( $F = 8.150$ ,  $p = 0.006$ ) (figure 4a), but not at the subalpine site ( $F = 2.154$ ,  $p = 0.148$ ) (figure 4b). To highlight the potential effects of evolutionary adaptation on mean fitness, we compare two scenarios that differ in the heritability of absorptivity, one without evolution (heritability  $h^2 = 0$ ) and one with maximal evolution ( $h^2 = 1$ ) (figure 4). The evolution scenario did yield increased overall mean fitness and reduced among-year variation in mean fitness at both sites. Relative to no-evolution, the evolution scenario increased the overall mean fitness by 1% (subalpine site) and 3% (alpine site). Evolution had greater effects on variation in mean fitness: evolution reduced the standard deviation



**Figure 3.** The directional selection gradient  $\beta$  (solid lines) has declined since 1955 for the (a) subalpine and (c) alpine sites. We depict the corresponding shifts in optimal (solid lines) and mean (dashed lines, from 1980) absorptivities for the (b) subalpine and (d) alpine sites. The population mean ( $\pm 1$  s.d.) absorptivity for *C. meadii* (black circle) in 1980 is also indicated.



**Figure 4.** Predicted mean fitness is similar with evolution ( $h^2 = 1$ : dashed line) and without evolution ( $h^2 = 0$ : solid line) for the (a) subalpine and (b) alpine sites.

in mean fitness by 23% (subalpine site) and 7% (alpine site). The predicted effects of evolution on the overall mean and variation in mean fitness are considerably smaller than the variation in fitness caused by variation in climate among years (figure 4).

## 4. Discussion

Understanding how environmental variability alters selection and evolutionary responses to sustained, directional environment change is an important challenge for evolutionary

ecology. Our analyses illustrate the benefits of linking variation in climate, phenotype and fitness in addressing this challenge for empirical systems. As expected, mean climate warming during the past half century at subalpine and alpine sites has altered predicted patterns of directional selection and reduced optimal absorptivities, but these mean changes are similar in magnitude to the stochastic variation in selection and optimal trait values among years. Climate warming also generates complex changes in the fitness functions beyond reductions in the optimal trait value (figure 2). For example, lower optimal absorptivity is associated with higher maximal fitness at the optimum ( $r = -0.36$  at the subalpine site). This pattern, consistent with the 'hotter is better' hypothesis that populations adapted to higher temperatures may achieve greater maximal fitness [45,46], highlights that warming may differentially affect absolute and relative fitness. In addition, lower optimal absorptivity is associated with higher (less negative) curvature of the fitness function ( $R = -0.48$  at the subalpine site). The curvature of the fitness function results from two opposing components: darker wings enable additional flight and reproductive output, but increase the risk of thermal stress that reduces egg viability and adult survival. Our analyses emphasize how these two components interact with environmental variability in ways that would not be anticipated using simple theoretical models of evolutionary responses to directional environmental change.

A key outcome of our study is that, despite substantial mean climate warming at these sites, predicted evolutionary responses of wing absorptivity to warming are modest. Multiple factors contribute to this result. First, stochastic temporal variation in climate and selection will reduce the evolutionary response and increase the lag between the mean and optimal absorptivity, as predicted by theoretical models [11]. Note that thermal variability within years at these sites is also increasing with time (figure 1), further reducing evolutionary responses. Second, the negative associations of optimal value of absorptivity with maximal fitness and the curvature of the fitness function will reduce the strength of directional selection on the trait. Third, the fitness function is generally asymmetric, with a shallower slope above than below the optimal trait value (figure 2). As a result, directional selection near the fitness peak will be stronger on absorptivities below than above the optimum. All of the factors will tend to reduce the evolutionary response to mean climate warming during the past half century in this study system, and potentially increase the evolutionary lag between mean and optimal trait values. How these evolutionary responses and lags are likely to change in response to future climate warming remains unexplored.

Climate variation also had important and unexpected effects on predicted variation in mean population fitness. Temperature variation within and between years was generally larger (figure 1), but variation in mean fitness was generally smaller (figure 4), at the subalpine than the alpine site. This nonlinear relationship between temperature and fitness variation is not due to heat stress at higher temperatures, as reported in some previous analyses of climate change in ectotherms [47,48]. Instead, relatively small increases in temperature at cool, alpine sites can have large effects on increasing opportunities for flight and reproduction. Unlike at the subalpine site, recent warming has ameliorated the climate conditions for adult *Colias* in alpine habitats [49], as reflected in increases in predicted mean fitness over the past 60 years.

At the alpine site, we find consistent, but declining, positive directional selection leading to evolutionary increases in mean wing absorptivity during the past 30 years (1980–2010). Our prediction of high values for optimal absorptivity may stem from incompletely accounting for the influence of thermal variation on body temperatures. For *Colias* butterflies and many other large insects, changes in solar radiation on the timescale of minutes to hours can directly impact body temperature and performance [28,50]. Limited past data for cloudiness and radiation and the uncertainties of future scenarios are major limitations on our ability to predict the consequences of climate change for terrestrial ectotherms. Our models may underestimate the extent to which spikes in solar radiation result in thermal stress.

Our models for selection and evolution in adult butterflies do not consider the potential effects of climate change on other life stages. Climate change can clearly have important ecological effects on multiple life stages in insects [1,51,52]. Additionally, a recent study documented evolutionary changes in thermal sensitivity for larval feeding in other *Colias* species in response to recent climate changes [6]. Integrating the potential effects of climate change across multiple life stages remains an important challenge [53].

Our current models do not consider the potential effects of phenotypic plasticity on trait values, selection and evolution. For some *Colias* species with multiple generations per year (multivoltine), day length or temperature during late larval and pupal development can influence adult wing melanin, resulting in different seasonal phenotypes [25,54,55]. Plasticity of wing melanin has not been studied in *C. meadii* and other univoltine species of *Colias* that have an obligate winter diapause. Theoretical models increasingly recognize the potential for phenotypic plasticity in response to environmental variability to modify evolutionary responses [10]. Adaptive plasticity may initially ameliorate the negative fitness consequences of environmental change, but may also reduce rates of evolutionary responses and increase the evolutionary lag of the population. Although we do not anticipate that considering adaptive plasticity would alter our results qualitatively for univoltine *Colias* in subalpine and alpine habitats, incorporating empirical data about plasticity into models that link phenotypes to fitness in this or other systems will help resolve the role of plasticity in responding to environmental change.

The potential for evolutionary adaptation to climate change to improve the mean fitness of populations and thus reduce the risks of extinction remains an important issue for evolutionary ecologists [9]. Our results for *Colias* butterflies suggest that evolution does have the potential to reduce variation in mean fitness, but they predict that evolution has had little impact on increasing overall mean fitness during the past half century in these systems. In general, among-year variation in mean fitness due to climate variability was substantially greater than the effects of evolution in subalpine and alpine *Colias*. The role of stochastic, fine-grained variation in climate in producing plastic responses to climate change has been widely documented and discussed, but the impact of such variation in reducing evolutionary responses to mean climate warming has received less attention [8,56,57]. Numerous analyses suggesting that potential rates of evolution are too slow relative to rates of climate change largely omit consideration of variability in climate. Such considerations are likely to further erode the potential for evolution to ameliorate responses to climate warming in many systems. The potential fitness consequences

of evolution in response to future climate warming must be considered in the light of variability in climate.

**Acknowledgements.** We thank Jessica Higgins, Ray Huey, Heidi MacLean and Rory Telemeco for useful discussion and comments on the

manuscript, and the Rocky Mountain Biological Labs for research facilities during part of the research.

**Funding statement.** Research supported in part by NSF grant no. DEB-1120062 to the authors.

## References

- Parnesan C. 2006 Ecological and evolutionary responses to recent climate change. *Annu. Rev. Ecol. Syst.* **37**, 637–669. (doi:10.1146/annurev.ecolsys.37.091305.110100)
- Bradshaw WE, Holzapfel CM. 2001 Genetic shift in photoperiodic response correlated with global warming. *Proc. Natl Acad. Sci. USA* **98**, 14 509–14 511. (doi:10.1073/pnas.241391498)
- Anderson JT, Inouye DW, McKinney AM, Colautti RI, Mitchell-Olds T. 2012 Phenotypic plasticity and adaptive evolution contribute to advancing flowering phenology in response to climate change. *Proc. R. Soc. B* **279**, 3843–3852. (doi:10.1098/rspb.2012.1051)
- van Asch M, Salis L, Holleman LJM, van Lith B, Visser ME. 2013 Evolutionary response of the egg hatching date of a herbivorous insect under climate change. *Nat. Clim. Change* **3**, 244–248. (doi:10.1038/nclimate1717)
- Karell P, Ahola K, Karstinen T, Valkama J, Brommer JE. 2012 Climate change drives microevolution in a wild bird. *Nat. Commun.* **2**, 208. (doi:10.1038/ncomms1213)
- Higgins JK, MacLean HJ, Buckley LB, Kingsolver JG. 2014 Geographic differences and microevolutionary changes in thermal sensitivity of butterfly larvae in response to climate. *Funct. Ecol.* **28**, 982–989. (doi:10.1111/1365-2435.12218)
- Leal M, Gunderson AR. 2012 Rapid change in the thermal tolerance of a tropical lizard. *Am. Nat.* **180**, 815–822. (doi:10.1086/668077)
- Merila J, Hendry AP. 2014 Climate change, adaptation, and phenotypic plasticity: the problem and the evidence. *Evol. Appl.* **7**, 1–14. (doi:10.1111/eva.12137)
- Carlson SM, Cunningham CJ, Westley PAH. 2014 Evolutionary rescue in a changing world. *Trends Ecol. Evol.* **29**, 521–530. (doi:10.1016/j.tree.2014.06.005)
- Chevin L, Lande R, Mace GM. 2010 Adaptation, plasticity, and extinction in a changing environment: towards a predictive theory. *PLoS Biol.* **8**, 357–365. (doi:10.1371/journal.pbio.1000357)
- Lynch M, Lande R. 1993 Evolution and extinction in response to environmental change. In *Biotic interactions and global change* (eds PM Kareiva, JG Kingsolver, RB Huey). Sunderland, MA: Sinauer Associates.
- Kearney M, Porter WP. 2009 Mechanistic niche modelling: combining physiological and spatial data to predict species' ranges. *Ecol. Lett.* **12**, 334–350. (doi:10.1111/j.1461-0248.2008.01277.x)
- Battisti DS, Naylor RL. 2009 Historical warnings of future food security with unprecedented seasonal heat. *Science* **323**, 240–244. (doi:10.1126/science.1164363)
- Gilchrist GW. 1995 Specialists and generalists in changing environments. I. Fitness landscapes of thermal sensitivity. *Am. Nat.* **146**, 252–270. (doi:10.1086/285797)
- Lynch M, Gabriel W. 1987 Environmental tolerance. *Am. Nat.* **129**, 283–303. (doi:10.1086/284635)
- Watt WB. 1968 Adaptive significance of pigment polymorphisms in *Colias* butterflies. I. Variation of melanin pigment in relation to thermoregulation. *Evolution* **22**, 437–458. (doi:10.2307/2406873)
- Kingsolver JG. 1985 Thermoregulatory significance of wing melanization in *Pieris* butterflies (Lepidoptera: Pieridae): physics, posture, and pattern. *Oecologia* **66**, 546–553. (doi:10.1007/BF00379348)
- Karl I, Janowitz SA, Fischer K. 2008 Altitudinal life-history variation and thermal adaptation in the copper butterfly *Lycaena tityrus*. *Oikos* **117**, 778–788. (doi:10.1111/j.0030-1299.2008.16522.x)
- Talloon W, Van Dyck H, Lens L. 2004 The cost of melanization: butterfly wing coloration under environmental stress. *Evolution* **58**, 360–366.
- Kingsolver JG. 1983 Thermoregulation and flight in *Colias* butterflies: elevational patterns and mechanistic limitations. *Ecology* **64**, 534–545. (doi:10.2307/1939973)
- Kingsolver JG. 1983 Ecological significance of flight activity in *Colias* butterflies: implications for reproductive strategy and population structure. *Ecology* **64**, 546–551. (doi:10.2307/1939974)
- Watt WB. 2003 Mechanistic studies of butterfly adaptation. In *Butterflies: ecology and evolution taking flight* (eds CL Boggs, WB Watt, PR Ehrlich), pp. 319–352. Chicago, IL: University of Chicago.
- Watt WB. 2004 Adaptation, constraint, and neutrality: mechanistic case studies with butterflies and then-general implications. In *The evolution of population biology* (eds RS Singh, MK Uyenoyama), pp. 275–485. Cambridge, IL: Cambridge University Press.
- Kingsolver JG, Moffat RJ. 1982 Thermoregulation and the determinants of heat transfer in *Colias* butterflies. *Oecologia* **53**, 27–33. (doi:10.1007/BF00377132)
- Watt WB. 1969 Adaptive significance of pigment polymorphisms in *Colias* butterflies. II. Thermoregulation and photoperiodically controlled melanin variation in *Colias eurytheme*. *Proc. Natl Acad. Sci. USA* **63**, 767–774. (doi:10.1073/pnas.63.3.767)
- Nijhout HF. 1981 The color patterns of butterflies and moths. *Sci. Am.* **245**, 140–151. (doi:10.1038/scientificamerican1181-140)
- Ellers J, Boggs CL. 2004 Functional ecological implications of intraspecific differences in wing melanization in *Colias* butterflies. *Biol. J. Linn. Soc.* **82**, 79–87. (doi:10.1111/j.1095-8312.2004.00319.x)
- Kingsolver JG, Watt WB. 1983 Thermoregulatory strategies in *Colias* butterflies: thermal stress and the limits to adaptation in temporally varying environments. *Am. Nat.* **121**, 32–55. (doi:10.1086/284038)
- McGuire CR, Nufio CR, Bowers MD, Guralnick RP. 2012 Elevation-dependent temperature trends in the rocky mountain front range: changes over a 56- and 20-year record. *PLoS ONE* **7**, e44370. (doi:10.1371/journal.pone.0044370)
- Parton WJ, Logan JA. 1981 A model for diurnal variation in soil and air temperature. *Agric. Meteorol.* **23**, 205–216. (doi:10.1016/0002-1571(81)90105-9)
- Campbell GS, Norman JM. 1998 *An introduction to environmental biophysics*. New York, NY: Springer Science.
- Erbs DG, Klein SA, Duffie JA. 1982 Estimation of the diffuse radiation fraction for hourly, daily and monthly-average global radiation. *Solar Energy* **28**, 293–302. (doi:10.1016/0038-092X(82)90302-4)
- Olyphant GA. 1984 Insolation topoclimates and potential ablation in alpine snow accumulation basins: Front Range, Colorado. *Water Resour. Res.* **20**, 491–498. (doi:10.1029/WR020i004p00491)
- Porter WP, Mitchell JW, Beckman WA, DeWitt CB. 1973 Behavioral implications of mechanistic ecology. Thermal and behavioral modeling of desert ectotherms and their microenvironment. *Oecologia* **13**, 1–54. (doi:10.1007/BF00379617)
- Porter WP, James FC. 1979 Behavioral implications of mechanistic ecology II: the African rainbow lizard, *Agama agama*. *Copeia* **4**, 594–619. (doi:10.2307/1443867)
- Mitchell J, Beckman W, Bailey R, Porter W. 1975 Microclimate modeling of the desert. In *Heat and mass transfer in the biosphere Part I, transfer processes in the plant environment* (eds DA DeVries, NH Afgan), pp. 275–286. Washington, DC: Scripta Book Co.
- Buckley LB, Kingsolver JG. 2012 The demographic impacts of shifts in climate means and extremes on alpine butterflies. *Funct. Ecol.* **26**, 969–977. (doi:10.1111/j.1365-2435.2012.01969.x)
- Kingsolver JG, Watt WB. 1984 Mechanistic constraints and optimality models:

- thermoregulatory strategies in *Colias* butterflies. *Ecology* **65**, 1835–1839. (doi:10.2307/1937780)
39. Kingsolver JG. 1981 *Thermoregulatory strategies of Colias butterflies: adaptation in variable environments*. Palo Alto, CA: Stanford University.
  40. Watt WB, Chew FS, Snyder LRG, Watt AG, Rothschild DE. 1977 Population structure of pierid butterflies. I. Numbers and movements of some montane *Colias* species. *Oecologia* **27**, 1–22. (doi:10.1007/BF00345682)
  41. Watt WB, Han D, Tabashnik BE. 1979 Population structure of pierid butterflies II. A 'native' population of *Colias philodice eriphyle* in Colorado. *Oecologia* **44**, 44–52. (doi:10.1007/BF00346396)
  42. Ellers J, Boggs CL. 2004 Functional ecological implications of intraspecific differences in wing melanization in *Colias* butterflies. *Biol. J. Linn. Soc.* **82**, 79–87. (doi:10.1111/j.1095-8312.2004.00319.x)
  43. Ellers J, Boggs CL. 2002 Evolution of wing color in *Colias* butterflies: heritability, sex-linkage, and population divergence. *Evolution* **56**, 836–840. (doi:10.1111/j.0014-3820.2002.tb01394.x)
  44. Lande R, Arnold SJ. 1983 The measurement of selection on correlated characters. *Evolution* **37**, 1210–1226. (doi:10.2307/2408842)
  45. Angilletta MJ, Huey RB, Frazier MR. 2009 Thermodynamic effects on organismal performance: is hotter better? *Physiol. Biochem. Zool.* **83**, 197–206. (doi:10.1086/648567)
  46. Kingsolver JG. 2009 The well-temperated biologist. *Am. Nat.* **174**, 755–768. (doi:10.1086/648310)
  47. Deutsch CA, Tewksbury JJ, Huey RB, Sheldon KS, Ghalambor CK, Haak DC, Martin PR. 2008 Impacts of climate warming on terrestrial ectotherms across latitude. *Proc. Natl Acad. Sci. USA* **105**, 6668–6672. (doi:10.1073/pnas.0709472105)
  48. Kingsolver JG, Diamond SE, Buckley LB. 2013 Heat stress and the fitness consequences of climate change for terrestrial ectotherms. *Funct. Ecol.* **27**, 1415–1423. (doi:10.1111/1365-2435.12145)
  49. Roy DB, Rothery P, Moss D, Pollard E, Thomas JA. 2001 Butterfly numbers and weather: predicting historical trends in abundance and the future effects of climate change. *J. Anim. Ecol.* **70**, 201–217. (doi:10.1046/j.1365-2656.2001.00480.x)
  50. Huey RB, Kingsolver JG. 1993 Evolutionary responses to extreme temperatures in ectotherms. *Am. Nat.* **143**, S21–S46. (doi:10.1086/285521)
  51. Crozier LG. 2004 Warmer winters drive butterfly range expansion by increasing survivorship. *Ecology* **85**, 231–241. (doi:10.1890/02-0607)
  52. Crozier LG, Dwyer G. 2006 Combining population-dynamic and ecophysiological models to predict climate-induced insect range shifts. *Am. Nat.* **167**, 853–866. (doi:10.1086/504848)
  53. Kingsolver JG, Woods HA, Buckley LB, Potter K, MacLean HJ, Higgins JK. 2011 Complex life cycles and the responses of insects to climate change. *Integr. Comp. Biol.* **51**, 719–732. (doi:10.1093/icb/ict015)
  54. Hoffman RJ. 1974 Environmental control of seasonal variation in the butterfly *Colias eurytheme*: effects of photoperiod and temperature on pteridine pigmentation. *J. Insect Physiol.* **20**, 1913–1924. (doi:10.1016/0022-1910(74)90098-5)
  55. Hoffman RJ. 1978 Environmental uncertainty and evolution of physiological adaptation in *Colias* butterflies. *Am. Nat.* **112**, 999–1015. (doi:10.1086/283343)
  56. Crozier LG, Hutchings JA. 2014 Plastic and evolutionary responses to climate change in fish. *Evol. Appl.* **7**, 68–87. (doi:10.1111/eva.12135)
  57. Charmantier A, Gienapp P. 2014 Climate change and timing of avian breeding and migration: evolutionary versus plastic changes. *Evol. Appl.* **7**, 15–28. (doi:10.1111/eva.12126)