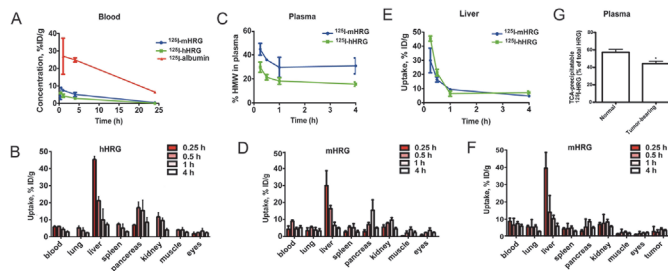


CORRECTION

# Correction: Histidine-Rich Glycoprotein Uptake and Turnover Is Mediated by Mononuclear Phagocytes

The PLOS ONE Staff

Fig. 2 is incorrect. The y-axis is incorrectly labeled in Fig. 2G. The authors have provided a corrected version here.



**Fig 2. Unusually rapid biodistribution of radiolabeled HRG.** A. Blood kinetics of  $^{125}\text{I}$ -albumin,  $^{125}\text{I}$ -hHRG and  $^{125}\text{I}$ -mHRG in C57BL/6 mice. (n = 4/time point). B. Biodistribution of  $^{125}\text{I}$ -hHRG in selected C57BL/6 mouse organs. C. Percentage of radioactivity in blood plasma, associated with a high molecular-weight fraction (>5 kDa). D. Biodistribution of  $^{125}\text{I}$ -mHRG in selected organs of naive C57BL/6 mice. E. Liver uptake of  $^{125}\text{I}$ -mHRG and  $^{125}\text{I}$ -hHRG. F. Biodistribution of  $^{125}\text{I}$ -mHRG in selected organs of T241 fibrosarcoma-bearing C57BL/6 mice. G. TCA-precipitable  $^{125}\text{I}$ -radioactivity in plasma after 2 h of circulation in naive and tumor-bearing mice injected with  $^{125}\text{I}$ -mHRG.

doi:10.1371/journal.pone.0118636.g001



click for updates

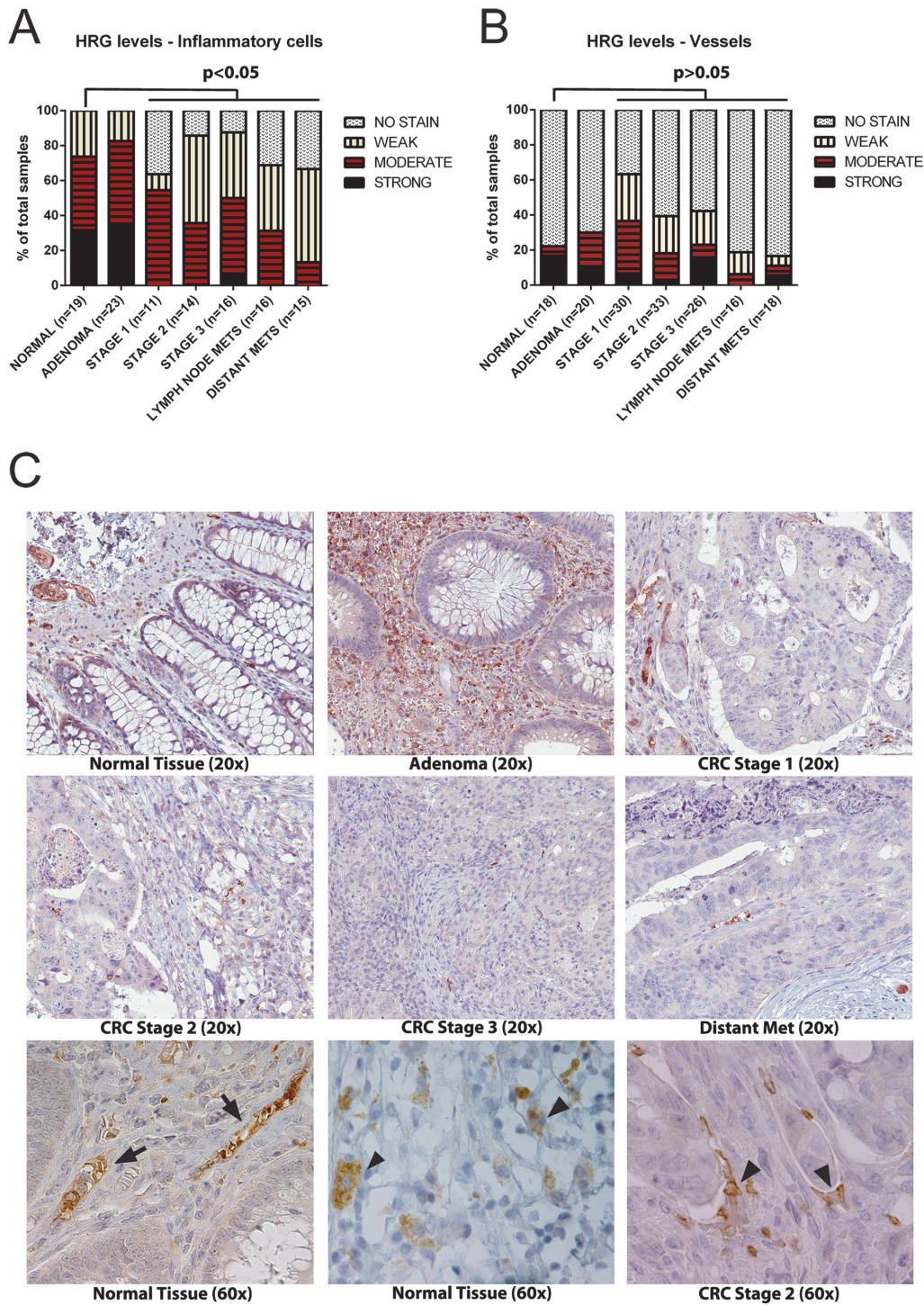
The Fig. 4 legend is incorrect. The third sentence of the Fig. 4 legend should have been omitted. The complete, correct Fig. 4 legend is:

OPEN ACCESS

**Citation:** The PLOS ONE Staff (2015) Correction: Histidine-Rich Glycoprotein Uptake and Turnover Is Mediated by Mononuclear Phagocytes. PLoS ONE 10(3): e0118636. doi:10.1371/journal.pone.0118636

**Published:** March 5, 2015

**Copyright:** © 2015 The PLOS ONE Staff. This is an open access article distributed under the terms of the [Creative Commons Attribution License](https://creativecommons.org/licenses/by/4.0/), which permits unrestricted use, distribution, and reproduction in any medium, provided the original author and source are credited.



**Fig 4. HRG detected by IHC of CRC tumor tissue arrays.** A. Scoring of HRG IHC signals associated with inflammatory cells in CRC arrays from strong to no signal. Statistical analysis;  $p < 0.05$  was considered significant. B. Scoring of HRG IHC signals associated with vessels, as above. C. Upper and middle row of panels: Representative images of the HRG IHC signals from the indicated categories at 20x magnification. Lower row of panels: Representative images of the HRC IHC signals in CRC at 60x magnification. Arrows indicate typical vessel-associated HRG signals in normal colorectal tissue (left) and in inflammatory cells in normal tissue (middle) and in stage 2 CRC (right).

doi:10.1371/journal.pone.0118636.g002

## Reference

1. Tugues S, Roche F, Noguer O, Orlova A, Bhoi S, Padhan N, et al. (2014) Histidine-Rich Glycoprotein Uptake and Turnover Is Mediated by Mononuclear Phagocytes. PLoS ONE 9(9): e107483. doi:[10.1371/journal.pone.0107483](https://doi.org/10.1371/journal.pone.0107483) PMID: [25243896](https://pubmed.ncbi.nlm.nih.gov/25243896/)