

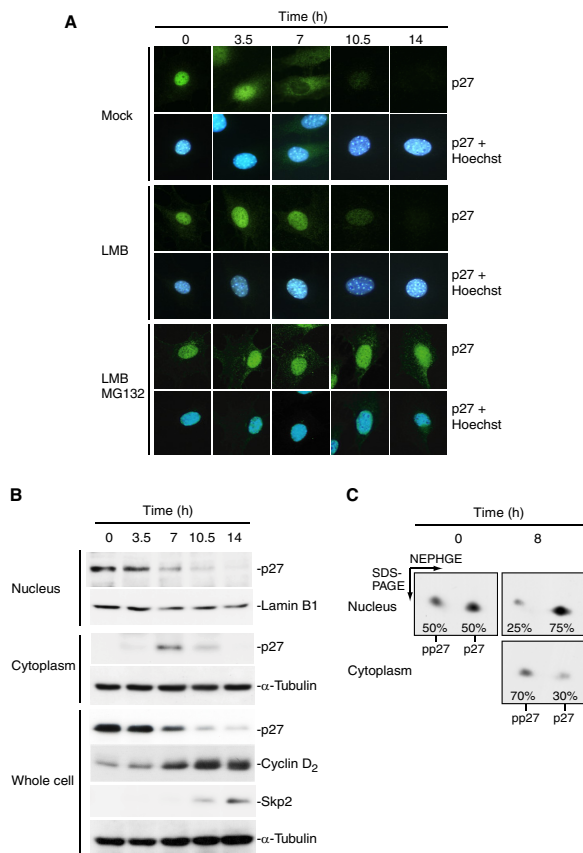
VOLUME 277 (2002) PAGES 14355–14358
 DOI 10.1074/jbc.A114.100762

Phosphorylation of p27^{Kip1} on serine 10 is required for its binding to CRM1 and nuclear export.

Noriko Ishida, Taichi Hara, Takumi Kamura, Minoru Yoshida, Keiko Nakayama, and Keiichi I. Nakayama

PAGE 14356:

Fig. 1B contained two errors. The image used to represent the anti- α -tubulin immunoblot for the cytoplasmic fraction from NIH 3T3 cells was duplicated and also used to represent the anti- α -tubulin immunoblot from the whole cell lysates of these cells. In addition, the image used to represent the anti-cyclin D₂ immunoblot for the whole cell lysates from NIH 3T3 cells that were treated with MG132 (data not shown) was also used to represent the anti-cyclin D₂ immunoblot from untreated cells. The correct anti- α -tubulin and anti-cyclin D₂ data for the whole cell lysates of NIH 3T3 cells are shown below. These corrections do not affect the interpretation of the results or the conclusions of this work.



Authors are urged to introduce these corrections into any reprints they distribute. Secondary (abstract) services are urged to carry notice of these corrections as prominently as they carried the original abstracts.