

Population structure of *Neisseria gonorrhoeae* based on whole genome data and its relationship with antibiotic resistance

Matthew N. Ezewudo¹, Sandeep J. Joseph¹, Santiago Castillo-Ramirez², Deborah Dean^{3,11}, Carlos del Rio^{1,4}, Xavier Didelot⁵, Jo-Anne Dillon⁶, Richard F. Selden⁷, William M. Shafer^{8,9}, Rosemary S. Turingan⁷, Magnus Unemo¹⁰ and Timothy D. Read¹

¹ Department of Medicine, Division of Infectious Diseases, Emory University School of Medicine, Atlanta, GA, USA

² Programa de Genómica Evolutiva, Centro de Ciencias Genómicas, Universidad Nacional Autónoma de México, Cuernavaca, Morelos, México

³ Children's Hospital Oakland Research Institute, Oakland, CA, USA

⁴ Hubert Department of Global Health, Rollins School of Public Health of Emory University, Atlanta, GA, USA

⁵ Department of Infectious Disease Epidemiology, Imperial College London, London, UK

⁶ Department of Microbiology and Immunology, College of Medicine, Vaccine and Infectious Disease Organization International Vaccine Centre, University of Saskatchewan, Saskatoon, Saskatchewan, Canada

⁷ NetBio, Waltham, MA, USA

⁸ Department of Microbiology and Immunology, Emory University School of Medicine, Atlanta, GA, USA

⁹ Laboratories of Bacterial Pathogenesis, Veterans Affairs Medical Center, Decatur, GA, USA

¹⁰ WHO Collaborating Centre for Gonorrhoea and other STIs, Örebro University Hospital, Örebro, Sweden

¹¹ University of San Francisco at California, Division of Infectious Diseases, San Francisco, CA, USA

ABSTRACT

Neisseria gonorrhoeae is the causative agent of gonorrhoea, a sexually transmitted infection (STI) of major importance. As a result of antibiotic resistance, there are now limited options for treating patients. We collected draft genome sequence data and associated metadata data on 76 *N. gonorrhoeae* strains from around the globe and searched for known determinants of antibiotic resistance within the strains. The population structure and evolutionary forces within the pathogen population were analyzed. Our results indicated a cosmopolitan gonococcal population mainly made up of five subgroups. The estimated ratio of recombination to mutation ($r/m = 2.2$) from our data set indicates an appreciable level of recombination occurring in the population. Strains with resistance phenotypes to more recent antibiotics (*azithromycin* and *cefixime*) were mostly found in two of the five population subgroups.

Subjects Bioinformatics, Evolutionary Studies, Genomics, Microbiology, Infectious Diseases

Keywords Antimicrobial resistance, Population structure, Recombination, Whole genome sequence analysis, Genetic admixture

Submitted 25 November 2014

Accepted 8 February 2015

Published 5 March 2015

Corresponding author

Timothy D. Read, tread@emory.edu

Academic editor

Christine Josenhans

Additional Information and
Declarations can be found on
page 18

DOI 10.7717/peerj.806

© Copyright

2015 Ezewudo et al.

Distributed under

Creative Commons CC-BY 4.0

OPEN ACCESS

INTRODUCTION

Neisseria gonorrhoeae, a Gram-negative bacterium, causes gonorrhea, the most common bacterial sexually transmitted infection (STIs), causing more than 106 million cases per year globally (*World Health Organization (WHO), 2012*). The only effective option for treating the disease and stopping its spread has been the use of antimicrobial therapy. Currently, there is no vaccine to prevent infection. Antimicrobial treatment options have diminished over time due to the progressive emergence of antimicrobial resistance (AMR) to drugs previously used to treat gonorrhea, and the paucity in the development of newer antibiotics that could effectively eradicate the pathogen (*Ohnishi et al., 2011; Unemo & Shafer, 2014*).

AMR evolution should be considered in the context of the genetic structure of the *N. gonorrhoeae* population. Early work by *O'Rourke & Stevens (1993)* using electrophoretic analysis of enzymes of the pathogen and serological methods suggested that gonococci have a non-clonal sexual or panmictic population structure. More recent studies have also suggested high rates of recombination within the *Neisseria* genus (*Didelot & Maiden, 2010*). High levels of recombination could confound studies of the gonococcal populations, especially if the studies are based on few genetic loci within strains as compared to the entire genomes. Recent multi-genome studies have focused on either a restricted geographic region (*Vidovic et al., 2014*) (genomes also included in present studies or on a small subset of the *N. gonorrhoeae* population (*Grad et al., 2014*)). Hence, there is a need for studies aimed at understanding the global *N. gonorrhoeae* population structure at the whole genome scale.

Past AMR studies using limited numbers of gonococcal strains from specific geographic regions of the globe have mostly focused on a number of representative genes or genetic regions of the genome to elucidate underlying mechanisms of antibiotic resistance (*Hagman & Shafer, 1995; Lindberg et al., 2007; Ohneck et al., 2011; Thakur et al., 2014; Tomberg et al., 2013; Unemo & Shafer, 2014; Unemo, Golparian & Hellmark, 2014; Unemo, Golparian & Nicholas, 2012; Zhao et al., 2009*). Extensive genome sequencing studies have yet to be conducted on a diverse collection of strains from different geographical locations and collected over longer time periods. Our approach in this study builds on recent multi-genome studies (*Grad et al., 2014; Vidovic et al., 2014*), with the goal of using whole genome analysis to elucidate two processes: (1) the population structure and dynamics of *Neisseria gonorrhoeae* and (2) the correlation between this population differentiation and AMR evolution in gonococci. Our genome analysis of strains from multiple sites across the world offers a geographic diversity of *N. gonorrhoeae* isolates, providing more depth in genome-wide studies of this pathogen and identifying possible sub-populations impacting AMR and evolution within the species.

MATERIALS AND METHODS

Neisseria gonorrhoeae isolates

Sixty-one *N. gonorrhoeae* isolates of diverse origin were obtained. These included isolates from the Gonococcal Isolation Surveillance Program (GISP) site covering Atlanta, Miami,

New York city and North Carolina in the United States ($n = 21$), from Canada (primarily, Saskatchewan) and Chile ($n = 1$) (Vidovic et al., 2014) ($n = 24$), and from WHO global collaborations; Sweden ($n = 7$), Norway ($n = 3$), Japan ($n = 2$), Austria ($n = 1$), Pakistan ($n = 1$), Philippines ($n = 1$), and Australia ($n = 1$). Phenotypic determination of the minimum inhibitory concentrations (MICs) of all isolates was performed using the agar dilution method or the Etest method (bioMerieux), according to the instructions from the manufacturer. The strains sequenced in this study were tested for resistance to primarily three antibiotics, *tetracycline*, *azithromycin* and *cefixime*, with breakpoints for resistance set at 2, 2.0, and 0.25 $\mu\text{g}/\text{mL}$, respectively, based on the CDC MIC (minimum inhibitory concentration) breakpoints for testing in the GISP protocol (<http://www.cdc.gov/std/gisp/gisp-protocol07-15-2010.pdf>). Antibiotic resistance profiles of the Canadian strains have been previously reported (Vidovic et al., 2014). Details of the different isolates with their NCBI accession numbers are presented in Table 1.

Sequence generation and assembly

The *N. gonorrhoeae* strains were shotgun (WGS) sequenced using the Illumina HiSeqTM instrument (Illumina, San Diego, California, USA), utilizing libraries prepared from 5 μg of genomic DNA for each sample. The average sequencing coverage was 225. The sequencing reads were filtered using the prinseq-lite algorithm (Schmieder & Edwards, 2011) to ensure only sequence reads with average phred score ≥ 30 were used. The reads for each project were then assembled *de novo*, using the velvet assembler program (Zerbino & Birney, 2008). The optimal kmer length for each assembly prior to assembly was determined using the velvet optimizer algorithm (Gladman & Seemann, 2012). Data was deposited in the NCBI Sequence Read Archive public database (Accession # SRA099559) (Table 1). For this study, we included an additional 14 draft genome sequences of *N. gonorrhoeae* strains, downloaded from the NCBI draft genomes database (NCBI Bioproject numbers: PRJNA55649, PRJNA55651, PRJNA55653, PRJNA55905, PRJNA46993, PRJNA55657, PRJNA55655, PRJNA55659, PRJNA55661, PRJNA55663, PRJNA55665, PRJNA55667, PRJNA55669, PRJNA55671, and the reference genome sequence Ref_FA_1090 (NC_002946.2).

Genome-wide phylogeny and pangenome analysis

The assembled genomes were annotated individually using the NCBI PGAP annotation pipeline to give predicted proteome for each of the strains. The orthologs were determined by OrthoMCL (Li, Stoeckert & Roos, 2003), which uses bi-directional BLASTP scores of all the protein sequences to perform Markov clustering in order to improve sensitivity and specificity of the orthologs. For the OrthoMCL analysis, we used a BLASTP E-value cut-off of $1\text{e-}05$, and inflation Markov clustering parameter of 1.5. Core genes were defined as the orthologous genes that are shared among all the *N. gonorrhoeae* strains used in this analysis.

The nucleotide sequences of all the core genes were concatenated together and core-gene nucleotide alignment was conducted using progressive MAUVE (Darling et al., 2004). Similarly, whole genome amino-acid alignment was also generated by concatenating the

Table 1 Location and date of collection of the *N. gonorrhoeae* strains including Sequence Types and MICs of the different strains to the antibiotics *azithromycin*, *cefixime* and *tetracycline*. The MIC breakpoint value for *azithromycin* resistance is 2 µg/mL, for *cefixime* 0.25 µg/mL, and for *tetracycline* 2 µg/mL, based on the CDC breakpoints for antibiotic testing.

Strain name	Location	Date	MLST	Azithromycin (MIC)	Cefixime (MIC)	Tetracycline (MIC)
CH811	Chile	1982	1583	0.25	0.008	2
GC1-182	Canada	1982	1583	0.5	0.008	4
SK708	Canada	2006	1594	1	0.016	0.5
SK1902	Canada	2006	10935	0.25	0.002	256
SK6987	Canada	2006	10010	1	0.016	4
SK7461	Canada	2008	1901	0.5	0.032	8
SK7842	Canada	2006	10010	1	0.016	8
SK8976	Canada	2006	1594	0.06	0.004	2
SK12684	Canada	2006	31129	0.5	0.016	8
SK33414	Canada	2007	1928	0.25	0.008	4
SK14515	Canada	2005	1893	0.25	0.016	2
SK15454	Canada	2007	1585	0.06	0.004	2
SK16259	Canada	2007	1893	0.125	0.008	4
SK16942	Canada	2005	1893	0.125	0.016	2
SK17973	Canada	2006	1893	1	0.016	8
SK22871	Canada	2007	8122	0.125	0.004	4
SK23020	Canada	2006	1901	0.25	0.125	16
SK28355	Canada	2007	1893	0.25	0.016	4
SK29344	Canada	2007	10010	0.125	0.008	4
SK29471	Canada	2005	1893	0.25	0.016	2
SK32402	Canada	2007	8153	0.5	0.016	4
SK36809	Canada	2007	8126	2	0.008	8
SK39420	Canada	2008	1585	0.5	0.016	0.5
ALB0303	USA	2011	1588	0.03	0.015	16
ALB0403	USA	2011	1901	1	0.125	4
ATL0103	USA	2011	10931	0.5	0.015	0.25
ALB0102	USA	2011	1901	0.25	0.06	2
ATL0105	USA	2011	1588	0.06	0.015	0.25
ATL0108	USA	2011	1584	0.03	0.015	0.25
ATL0117	USA	2011	10932	0.125	0.015	16
ATL0121	USA	2011	1902	0.5	0.03	1
ATL0125	USA	2011	1901	0.25	0.015	1
ATL0508	USA	2011	1585	0.06	0.015	16
ATL0513	USA	2011	1893	0.25	0.03	2
MIA0202	USA	2011	1901	0.5	0.03	2
MIA0309	USA	2011	1931	0.125	0.015	16
MIA0310	USA	2011	1584	0.03	0.015	16
MIA0510	USA	2011	1901	1	0.03	2
MIA0515	USA	2011	1901	0.25	0.03	16

(continued on next page)

Table 1 (continued)

Strain name	Location	Date	MLST	Azithromycin (MIC)	Cefixime (MIC)	Tetracycline (MIC)
MIA0516	USA	2011	1901	0.5	0.06	8
NOR0306	USA	2011	1583	0.25	0.015	2
NYC0507	USA	2011	1901	0.25	0.06	2
NYC0513	USA	2011	1901	0.25	0.06	4
MUNG1	Canada	1991	10934	0.125	<0.016	0.25
MUNG3	Japan	2003	7363	0.25	0.5	2
MUNG4	Japan	1996	1590	0.5	0.25	4
MUNG5	Philippines	1992	1901	0.25	<0.016	1
MUNG6	Australia	2001	10008	0.125	<0.016	16
MUNG8	USA	2001	8127	2	<0.016	0.5
MUNG9	Sweden	2010	1901	0.5	1	2
MUNG12	Norway	2010	1901	0.5	0.25	4
MUNG14	Norway	2010	1901	0.5	0.25	4
MUNG15	Austria	2011	1901	0.25	1	2
MUNG17	Sweden	2010	1892	1	0.5	2
MUNG18	Norway	2010	10933	0.125	<0.016	2
MUNG19	Sweden	2010	1580	>256	<0.016	2
MUNG20	Sweden	2013	7363	0.25	0.5	2
MUNG21	Pakistan	2008	1902	1	0.032	2
MUNG23	Sweden	1998	1585	0.064	<0.016	0.125
MUNG25	Sweden	1998	1901	0.125	<0.016	0.5
MUNG26	Sweden	1999	1584	0.064	<0.016	0.5

deduced amino-acid sequences of all the core genes generated using MUSCLE (Edgar, 2004), and to form a super protein alignment. Homoplasious sites were removed from the whole-genome nucleotide alignment using the Noisy software (Dress et al., 2008). The protein alignments were filtered by GBLOCKS (Talavera & Castresana, 2007) using default settings to remove regions that contained gaps or were highly diverged. A maximum likelihood (ML) tree from the same data set was created using the GTR and JTT substitution models for the nucleotide and protein alignment respectively and the GAMMA evolutionary model (Stamatakis, 2014). The majority rule-consensus tree was generated from 200 bootstrap replicates of the model. Linear regression of the root-to-tip distances against the year of isolation was performed using the Path-O-Gen tool (<http://tree.bio.ed.ac.uk/software/pathogen/>).

Multi-locus sequence typing (MLST) locus analysis

MLST is a genotyping tool for *Neisseria* based on sequencing of 7 core housekeeping genes (Jolley & Maiden, 2010). There are currently close to 11,000 individual *Neisseria* sequence profiles in the publicly available MLST database (<http://pubmlst.org>). We utilized a custom python script mlstBLAST.py (<http://sourceforge.net/projects/srst/files/mlstBLAST/>) to perform a BLAST search of these genes across all the strains in our data set and identified the sequence type (ST) for each strain. Novel alleles of the locus and STs

were submitted to the MLST database. A phylogeny of the concatenated DNA sequences of all the *N. gonorrhoeae* STs in the MLST public database was created using the neighbor joining distance matrix approach of the PHYLIP (Felstein, 1989). Mean nucleotide distance for the sequence alignments and MLST genes was computed using MEGA software (Tamura et al., 2013).

Estimating population parameters and homologous recombination

ClonalFrame (Didelot & Falush, 2007) utilizes a statistical framework to reconstruct the clonal genealogy as well as identify the regions along the genomes that has been affected both by recombination and mutation. The model uses a Bayesian approach to predict the phylogenetic relationship in the sample set, given the whole genome sequence alignment data. The input genome alignment data was the core genes ($n = 1,189$) alignment generated from MAUVE. Four independent ClonalFrame runs were performed for 40,000 iterations, with the first 20,000 discarded as burn-in. This allowed the model parameters to converge, and each of the 4 runs were checked for the consistency of the estimated parameters as well as the consistency of the topology of the inferred clonal genealogies.

Population structure analysis

The program BAPS (Bayesian Analysis of Population Structure) version 5.3 (Corander & Marttinen, 2006; Tang et al., 2009) was used to infer the underlying population structure of the 76 *N. gonorrhoeae* strains in the sample set. SNPs from the core MAUVE alignment, with gaps removed were converted to a BAPS input file, which is a representation of all the polymorphic loci in the multi-sequence alignment. BAPS applied a Bayesian model to predict the likelihood of a population structure, given the input data and non-parametric assumption approach to trace ancestry of the different individuals in the sample set. For the mixture analysis we used the 'Clustering of individuals' approach. We ran a preliminary analysis to evaluate the approximate number of genetically differentiated groups using a vector from 2 to 40 K values, where K is the maximum number of groups. Given that 5 groups was the K value with the best log likelihood, we ran a second analysis using from 3 to 7 K values and again the best K value was 5 groups. We used the 'Admixture based on mixture clustering' module for the admixture analysis. For the analysis, the minimum population and the admixture coefficient for the individuals was then set to 5. For the reference individuals from each population and the admixture coefficient for reference individuals we used the values as described by Castillo-Ramírez et al. (2012). In addition, population structure analysis of the sample set using the fineSTRUCTURE tool (Lawson et al., 2012) was performed. The fineSTRUCTURE analysis was a two step process-(1) ChromoPainter algorithm was used to generate the co-ancestry matrix from the genome-wide haplotype data using the linkage model. (2) The fineSTRUCTURE algorithm performed a model-based clustering using a Bayesian MCMC approach to predict the likelihood of a population structure given the input data and non-parametric assumption approach to trace ancestry of the different individuals in the sample set. The fineSTRUCTURE approach was used to corroborate the findings from the BAPS population structure analysis.

Mapping the movement of DNA between *Neisseria gonorrhoeae* clades

We traced the flow of recombination between strains into five different subgroups in the phylogeny determined from the subgroups of the population defined by the BAPS analysis. We created a BLAST database of the whole genome sequence of all 76 strains in the sample set and included 14 whole genome sequences of all other *Neisseria* species (NC_008767.1, NC_014752.1, NC_017512.1, NC_017516.1, NC_003112.1, NC_010120.1, NC_017501.1, NC_017514.1, NC_017517.1, NC_003116.1, NC_013016.1, NC_017505.1, NC_017515.1, NC_017518.1) that are present in the NCBI database. Next, we performed a BLASTN search for each of the genomic region within the strains identified by ClonalFrame to be under recombination, selecting the best hit within the sequences in the database we created, with an identity of >98%, to be the source of the recombined region. We also removed BLAST matches found in strains from similar subgroups as the source of the recombined region. We used the *migest* package (<http://cran.r-project.org/web/packages/migest/>) implemented in the R statistical language to create a circular representation of the matrix of relationship between the subpopulations identified by BAPS based on the purported recombination between strains in the different subgroups. We also supplied *migest* with the matrix from BAPS admixture analysis and recreated the circular flow of recombination across only the subpopulations as defined by BAPS.

Comparison of nucleotide substitution rates

Amino acid sequences were aligned using MUSCLE sequence aligner (Edgar, 2004). The amino acid sequence alignment was converted to nucleotide alignment based on the corresponding gene sequence using PAL2NAL (Suyama, Torrents & Bork, 2006) and we implemented the YN00 method of the PAML package (Yang, 2007) to calculate the pairwise dN/dS ratios for the strains (Rocha et al., 2006). The contribution of each strain to the overall variation in the dN/dS rates across the sample set was estimated using ANOVA (Analysis of Variance) approaches.

Analysis of positive selection

For the analysis of positive selection within core genes of the strains in the sample set, we first identified and removed core genes that have signals of homologous recombination using three methods of Pairwise Homoplasy Index (PHI), Neighbor Similarity Score (NSS) and the maximum χ^2 method. The three methods are implemented in the PhiPack package (Sawyer, 1989). A window size of 50 nucleotides was used to run the methods in the package, and genes shown to have significant probability of homologous recombination by a majority of the methods were not used for the positive selection analysis. Next, we identified core genes under positive selection using codeml of PAML tool version 4.7 (Yang, 2007). We applied the branch-sites test for positive selection Model A test 2 of the tool, to identify genes under positive selection population groups. For each of the clades, we performed the Likelihood Ratio Test (LRT) for two hypotheses—the null hypothesis is the existence of neutral selection as implemented in the null model versus the

Table 2 Core genes of *N. gonorrhoeae* under positive selection in the different clades of the phylogeny of strains in the sample set.

Gene	Clades present	Gene ID (reference genomeFA 1090)
PorB	1, 3, 5	NGO1812
Acetate kinase 2	5	NGO1521
Primosomal replication protein	3	NGO0582
DNA Helicase	3, 5	NGO1196
Hypothetical protein	5	NGO0880
Hypothetical protein	5	NGO1847
Hypothetical protein	5	NGO1948
ComA	5	NGO0276
Chaperone protein HscA	5	NGO0829
tRNA-ribosyltransferase	5	NGO0294
RNA polymerase Subunit β	5	NGO1850
ArsR family transcriptional regulator	5	NGO1562
Hypothetical protein	5	NGO0165
PriB	5	NGO0582
ABC transporter subunit	3	NGO2088
Hypothetical protein	3	NGO1984
tRNA pseudouridine synthase B	3	NGO0642
Prolyl endopeptidase	1	NGO0026
Apo-lipoprotein N-acyltransferase	1	NGO0289
Sodium dependent transporter	1	NGO2096
Phage associated protein	1	NGO1012
Hypothetical protein	4	NGO0914

alternative hypothesis implemented in the test model for positive selection. The LRT was performed to a degree of freedom of 1, and we corrected for multiple testing using the False discovery rate approach (FDR) (*Benjamini & Hochberg, 1995*). We further identified the Gene Ontology (GO) terms and functional characterizations of the genes under positive selection (see [Table 2](#)) and performed an enrichment test for functionality of these genes using the blast2go test pipeline (*Götz et al., 2011*).

Confirming known predictors of antibiotic resistance phenotype

We downloaded from NCBI reference DNA sequences of resistance determinants that have been shown in the literature to underlie the resistance phenotype we have observed in our sample set (see [Table 3](#)), and performed a BLASTN search for each of these DNA sequence regions across all the strains in the database of whole genome sequences. For convenience, the contigs for each assembly were ordered into one pseudocontig after tiling to the reference genome FA1090, using the ABACUS tool (<http://abacas.sourceforge.net/>).

We selected the top hit (with identity match of 98% or more) for each sequence (strain) in the database and parsed the alignment between the query and the subject sequence in the database for the presence or absence of the underlying resistance genetic mutations as suggested in the literature.

Table 3 Known antibiotic resistance determinants in sample set. The description includes the PubMed reference ID and associated resistance phenotypes of these determinants in *N. gonorrhoeae*. Cephalosporin antibiotics include *cefixime* and *ceftriaxone*, while macrolides include *erythromycin* and *azithromycin*.

Gene name	FA1090 Reference locus_tag/ Gene Bank ID	Genetic Mutations	Resistance Phenotype	References
<i>mtrR</i>	NGO1366	G45D, A39T (glycine and aspartate substitutions)	Decreased susceptibility to macrolides and beta-lactams	PMID: 18761689
<i>mtrCDE</i> promoter	NGO1366	Single nucleotide deletion on reference genome position 1327932	Decreased susceptibility to macrolides and beta-lactams	PMID: 18761689
<i>penB</i>	NGO1812	G101K, A102D (glycine and alanine substitutions)	Decreased susceptibility to third-generation cephalosporins	PMID: 17420216
Mosaic <i>penA</i>	NGO1542	Mosaic pattern amino acid substitutions form position 294 to end of gene	Decreased susceptibility to third-generation cephalosporins	PMID: 20028823
<i>rpsJ</i>	NGO1841	V57M	Decreased susceptibility to <i>tetracycline</i>	PMID:16189114
23S rRNA	AF450080	C2611T (Cystine to Threonine substitution)	Decreased susceptibility to Azithromycin	PMID: 12183262
<i>tetM</i>	N/A	Horizontally transferred determinant on plasmids	Resistance to <i>tetracycline</i> (MIC \geq 16 μ g/ml)	PMID: 21349987

RESULTS AND DISCUSSION

Genome-wide homologous recombination in diverse *N. gonorrhoeae*

We sequenced 61 recent clinical isolates primarily from the US and Canada but also single representatives from other countries, including Japan, Pakistan, Australia, Austria, Philippines, Norway and Sweden using the WGS approach to a high average coverage (average 225-fold read redundancy). *De novo* assemblies based on these data produced a set of contigs that represented draft, unordered representations of the genomes with high sequence quality. A preliminary phylogeographical analysis of the Canadian isolates ($n = 23$) was recently published (Vidovic et al., 2014). For the analysis, we included the 14 *N. gonorrhoeae* draft NCBI genome sequences (12 from the US and 2 from Europe) and the genome sequence of the FA1090 *N. gonorrhoeae* reference strain. The 76 were assigned into 23 previously described MLST STs and four new STs (10931,10932,10933,10934). The genetic diversity (measured as pairwise nucleotide distances of MLST loci) of the strains in this study was about half that of the *N. gonorrhoeae* strains as a whole (0.001 substitutions per site in our study compared to 0.002 in the large MLST set), and the STs from our sample set were represented across the different clades of a phylogeny of housekeeping genes of *N. gonorrhoeae* strains found in the MLST database (see Fig. S5). Alignment of the shotgun assembly to reference genome FA1090 (NC_002946.2), yielded 10,962 SNPs in the core region (conserved in all strains). The average per nucleotide diversity in the core genome regions was 0.003.

Homologous recombination is known to play a role in shaping bacteria populations (Didelot & Maiden, 2010). The ClonalFrame tool (Didelot & Falush, 2007) detected 952

independent recombination events, covering more than 50% of the reference genome. The average size of the recombination regions identified was 360 base pairs. The estimate for the ratio of effects of recombination and mutation (r/m) for our strain set was 2.2, a relatively high value for bacterial species (*Didelot & Maiden, 2010*) (Fig. S3) and quite similar to the r/m estimate of 1.9 based on the whole genome alignment on a less genetically diverse group of *N. gonorrhoeae* strains reported by *Grad et al. (2014)*.

We constructed a maximum likelihood phylogeny of the core genome of the 76 strains using the RAxML program (excluding regions identified as potentially recombinant) (Fig. 1). This tree had similar topology to the clonal frame that determined by the eponymous software (Fig. S3). The tree showed multiple clades but there was no strong signal of genetic isolation by distance at the continental scale. The rate of the molecular clock was estimated to be 8.93×10^{-6} mutations per year based on the slope of the regression of the root-to-tip divergence with isolation dates (see Fig. S2). This value was similar to those obtained in other bacterial studies, ranging from 8.6×10^{-9} to 2.5×10^{-5} (*Zhou et al., 2013*). However, because the temporal signal was weak in the root-to-tip analysis (Fig. S2), we did not use these data for Bayesian phylogeny analysis using the BEAST phylogeny tool (*Drummond & Rambaut, 2007*).

***Neisseria gonorrhoeae* population structure and biogeography**

Given that recombination was frequent in these genomes, we sought to evaluate the genetic substructure of the population. We used two complementary methods. BAPS (*Tang et al., 2009*) predicts the likelihood of a population structure given the input data and uses a non-parametric assumption approach to trace ancestry. fineSTRUCTURE (*Lawson et al., 2012*), on the other hand, uses similar methods of predicting population substructure, but to a finer detail and does not assume a prior optimum number of subpopulations (K). The BAPS tool identified 5 subgroups within the *N. gonorrhoeae* population from the strains within the sample set (Fig. 3). As expected, members with the same subgroup ancestry generally were found near each other when mapped on the ML phylogeny constructed using the nonrecombining portion of the genome. On the other hand, fineSTRUCTURE identified 30 genetic subgroups within our sample set (Fig. S4). However, individual members of each of the fineSTRUCTURE subgroups belong to the same BAPS subgroup. Each of the five BAPS subgroups contained strains from multiple continents based on geography or location of isolation (Fig. 1). It was particularly interesting that each BAPS cluster had at least one US strain and one Canadian strain. The BAPS analysis revealed a complex relationship between Group 3 and 5, with the latter group 5 separated into two group 3 clades (Fig. 1). Group 3 strains in clades closely related to group 5 showed significant genetic import from group 5. It is possible that the extent of admixture occurring in group 3 and 5 may have caused misidentification. Also, strains of sequence type (ST) 1901, which is the most abundant ST in our sample set all belong to subgroup 1, hinting at a correlation between BAPS subgrouping and MLST.

We assessed patterns of genetic drift effects in the population by estimating the pairwise substitution rates between all the core gene orthologs for the strains and determining the

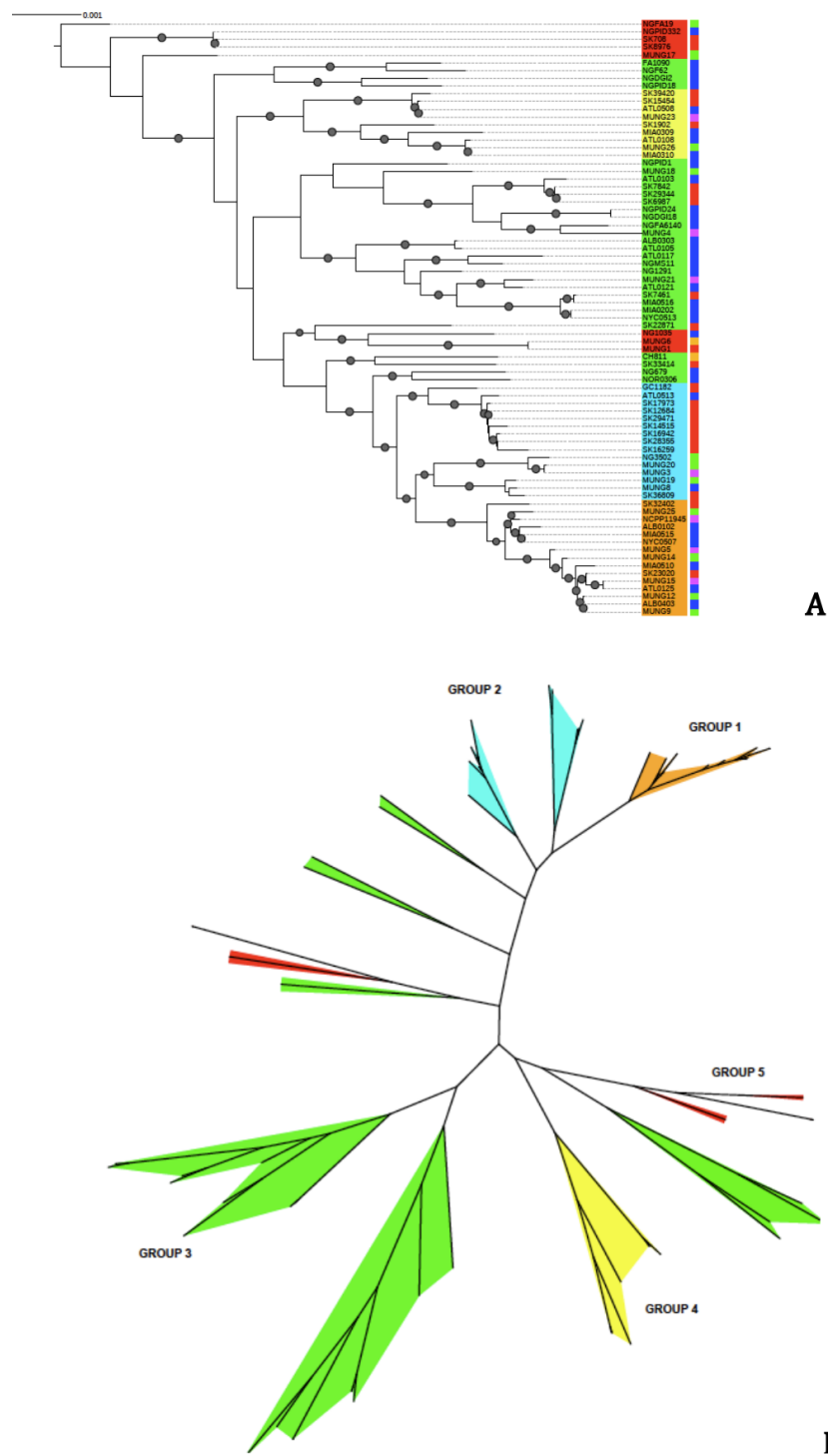


Figure 1 Phylogeny of *N. gonorrhoeae* strains in the sample set. (A) (Top). Maximum Likelihood phylogeny of sequenced strains of *N. gonorrhoeae*. Branches with bootstrap value >80% for branches are indicated. Taxa are highlighted based on 5 different subgroups defined by BAPS. Annotations next to the leaves are colored based on location of isolation; Canada is colored red, US blue, Europe green, Asia purple and the lone strains from Australia (MUNG6) and Chile (CH811) is colored brown. (B) Unrooted phylogeny based on the same tree.

mean dN/dS ratio for each strain. The mean pairwise dN/dS ratios for each strain are shown in Fig. 4. There was significant variation in the mean dN/dS ratios among the strains (ANOVA p -value = 2.0×10^{-16}). The overall mean of the dN/dS estimate was 0.3184, similar to the 0.402 value estimated for the bacterial pathogen *Chlamydia trachomatis* (Joseph et al., 2012). The mean dN/dS ratio for the five subgroups respectively was (0.32412976, 0.33325164, 0.31273103, 0.30952504 and 0.30990092). There is no significant difference between group mean dN/dS ratios (p -value = 0.921, t test of means).

The mean dN/dS ratio for strains from the Canadian region was 0.3279, which was above the overall mean ratio, while that for strains collected in the US was 0.31708, which is below the overall pairwise dN/dS mean ratio for the sample set. This was also a statistically significant difference (p -value 0.0018 for t test of means), suggesting a possible geographical effect within this subset of strains.

Genetic admixture within *N. gonorrhoeae* and with other *Neisseria* species

In order to understand the flow of genetic information between the strains from five different subgroups defined by the BAPS analysis (Fig. 3) as well as strains from other *Neisseria* species, we used two independent approaches. The first was to search each of the 952 recombination regions identified by ClonalFrame for a best BLASTN match from another subgroup or *Neisseria* species (We created a blast database of the 76 genomes from this study and representative strains from the *Neisseria* genus.) (Fig. S3). In parallel, we also counted the occurrence of co-ancestry of genetic markers revealed by the BAPS analysis. Both the BAPS and BLAST analyses suggested that group 3 was the most common nexus of homologous recombination between other clades, consistent with its basal phylogenetic status. In the BAPS-based network groups 1 and 2, and to a greater extent, group 5, were primarily DNA donors to group 3 (Fig. 2B). But this pattern was less visible in the BLAST network (Fig. 2A). It is notable that more than 90% of the recombination with strains from other *Neisseria* species occurred in groups 2 and 3. Group 5 stood out as a significant source of genetic exchange into strains in group 3.

The genetic relatedness of the strains in the sample set or the purported sharing of genetic materials across the different subgroups shown by the BAPS figure paralleled the pattern revealed by the BLAST clonal frame analysis (p -value = 0.048, Mantel test for comparing the distance matrices of the five populations between both methods). The exchange of genetic materials from other *Neisseria* species was not accounted for in the BAPS admixture analysis. Based on the BLAST analysis, the proportion of DNA transferred within *N. gonorrhoeae* compared to arriving from *Neisseria* strains the species was 729 out of 849 intra-specific genetic events. This finding is line with the “fuzzy species” concept of Fraser, Hanage & Spratt (2007): while *N. gonorrhoeae* is not sexually isolated, DNA flow seemed predominantly through intra-specific exchanges.

Genes under positive selection

Of the 1,189 core genes, we identified 352 genes as likely to contain past recombination histories using the PHIPACK tests (Sawyer, 1989). Thirty-one genes within the subset of

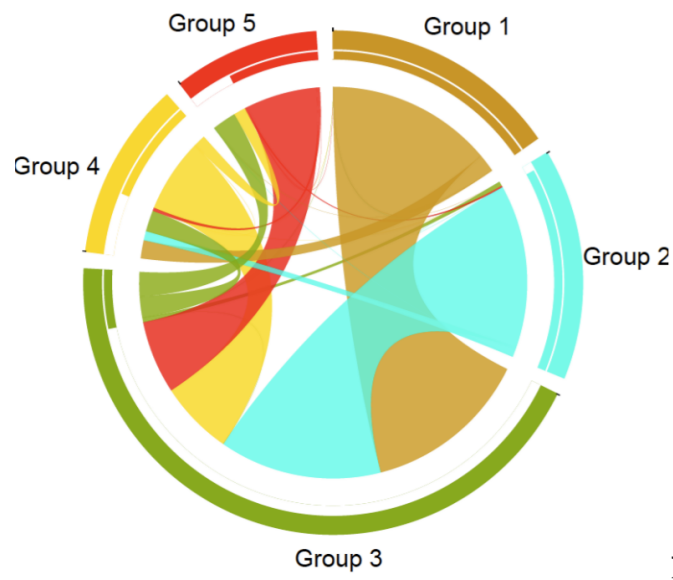
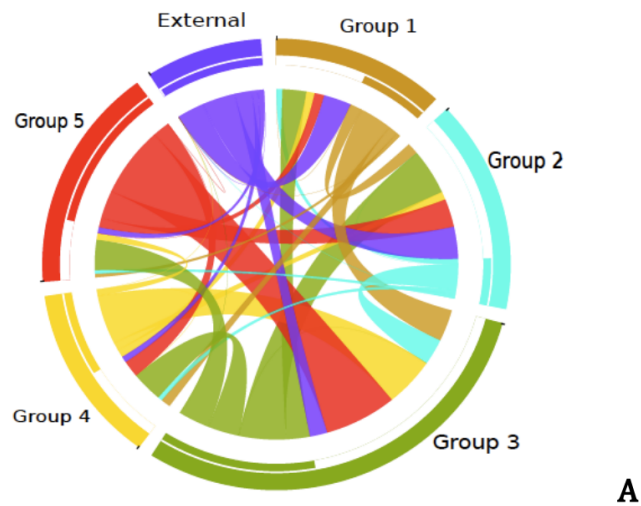


Figure 2 Pathways for exchange of genetic materials between populations. (A) Recombination pattern traced from BLAST results of similarity of recombined regions between the subgroups defined by BAPS of *N. gonorrhoeae*. The clade showed as external represents strains from other *Neisseria* species. (B) Exchange of genetic materials among subgroups within the sample set as defined by BAPS admixture analysis. Colored base sub-sectors of the circle for each subgroup in the diagram represents outflow of genetic material while blank or white colored sub-sectors represent inflow of genetic materials to the subgroups. The figure was created using the migest package of the R statistical tool.

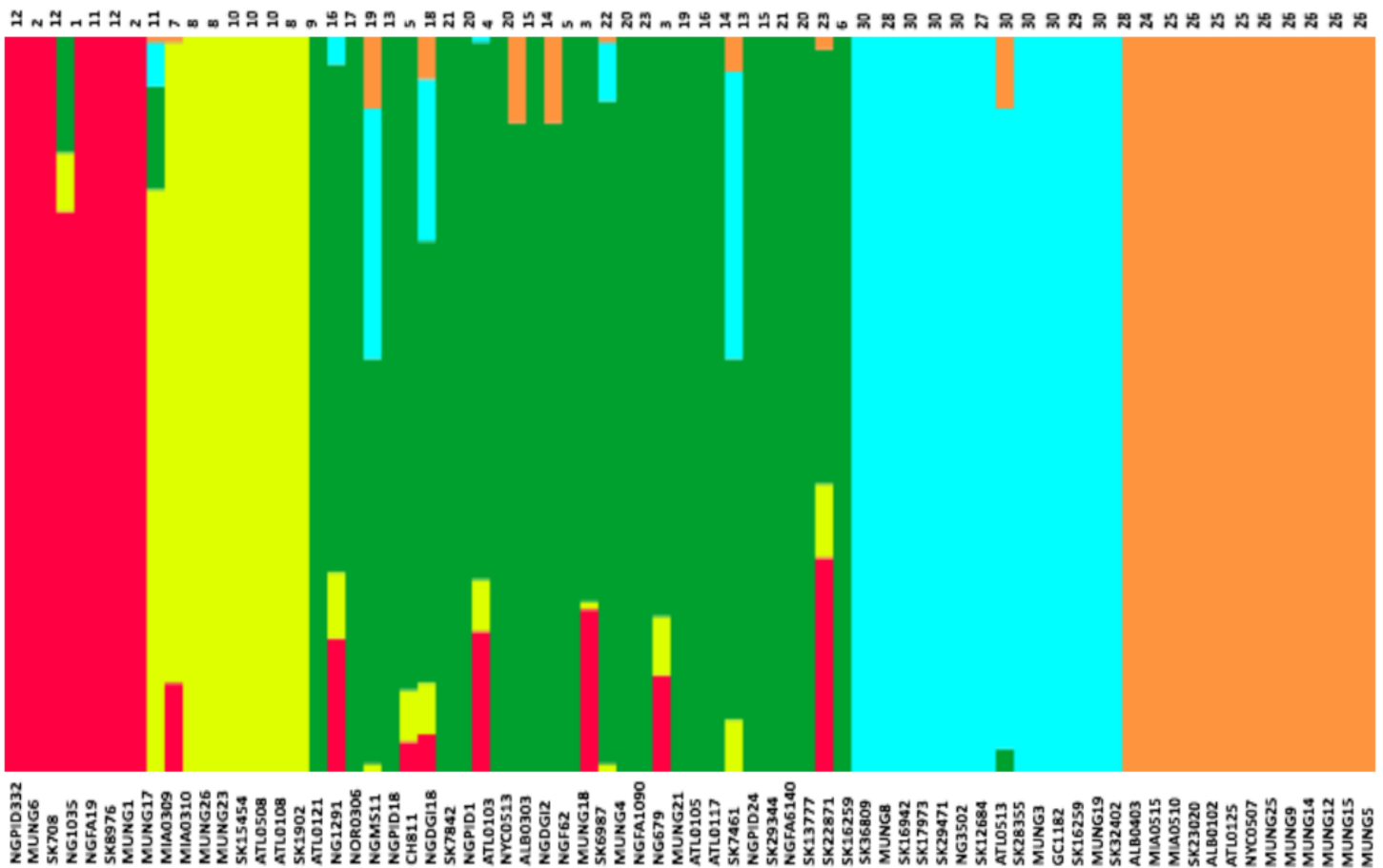


Figure 3 Population subgroups from strains of *N. gonorrhoeae* in the sample set defined by BAPS. The names for each strain in the different subgroup are indicated at the bottom of the plot on the x-axis, while the fineSTRUCTURE group labels for each strain is indicated on top of the plot. This figure shows that the structure of the *Neisseria gonorrhoeae* population divides into five subgroups. Each color represents one of the genetically differentiated groups and each vertical colored bar corresponds to one isolate. When the vertical bars show two colors, each color corresponds to one of the groups and this is evidence for admixture; the proportion of every color in the bar reflects the proportion of the genome coming from the group represented by that particular color.

837 non-recombining core genes were found to be under positive selection using the tests implemented by the PAML software ('Materials and Methods'). BAPS subgroup 5 had the highest number of core genes under selection (14) followed by subgroup 3 (7). While we found no significant enrichment of genes under positive selection in any of the functional classes in the Gene Ontology (GO) database, the functions of the best match proteins from genes under positive selection can be broadly classified to genes involved in DNA or RNA synthesis of gene expression, membrane or transport proteins, and, to a lesser extent, genes involved in metabolic pathways in the bacterial cell (Data S2 spreadsheet). Of the 352 genes found to have signals of recombination, we found no significant enrichment of the genes in any of the functional classes in the GO database. The functions of these genes could broadly be classified into 2 groups: genes encoding membrane and transport proteins; and those involved in metabolic pathways in the cell (Data S3).

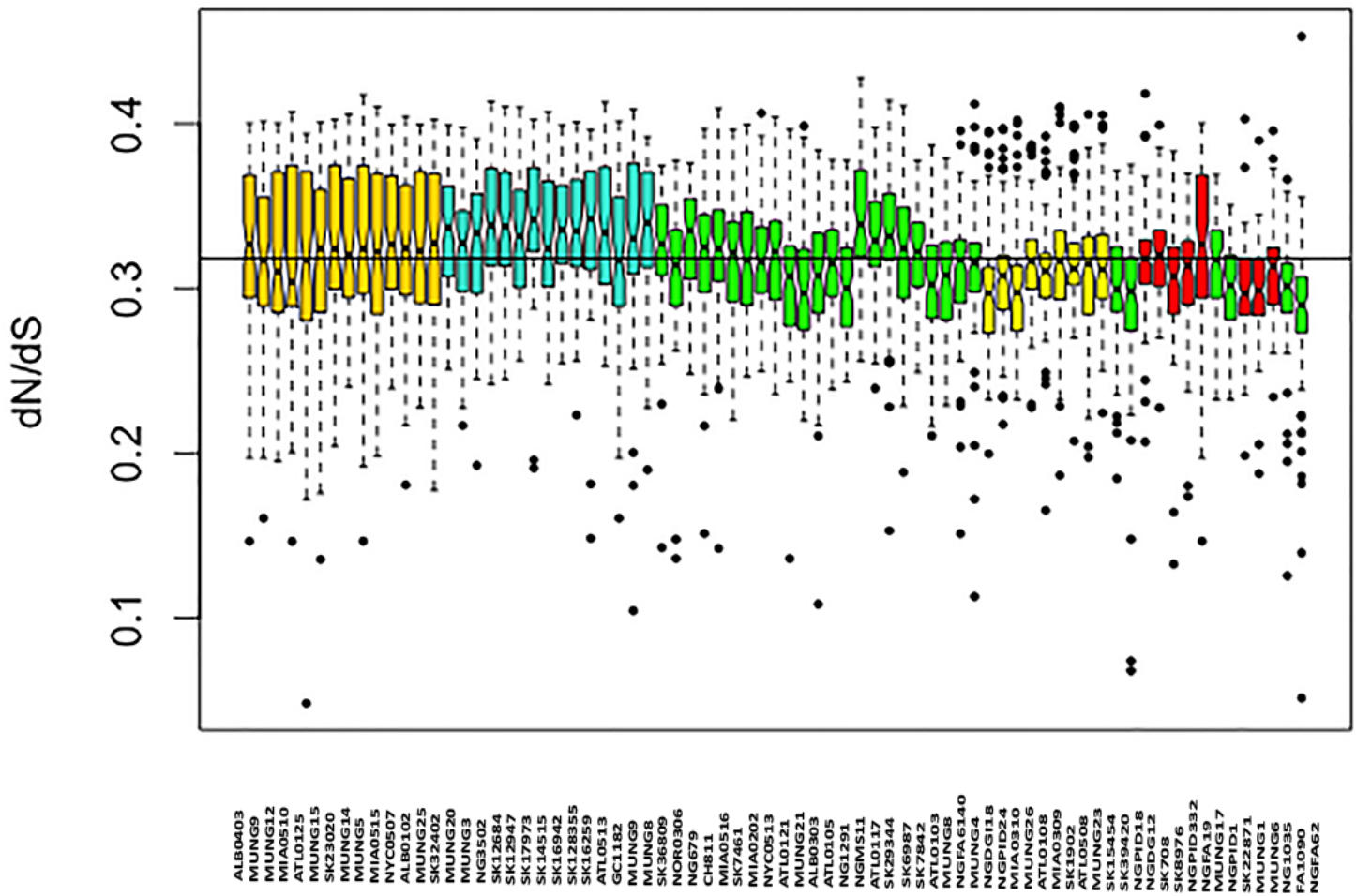


Figure 4 Boxplot of mean dN/dS ratio pair-wise comparison of core genes of each of the strains of *N. gonorrhoeae* in the sample set. The box plot is colored by subgroups within the *Neisseria* population, defined by the BAPS tool.

In regard to antibiotic resistance and selection, the most interesting gene found to be under positive selection was *porB* (Smith, Maynard Smith & Spratt, 1995), which has been shown to be involved in mechanisms of resistance to penicillins, macrolides, cephalosporins and tetracyclines (Unemo & Shafer, 2014). *porB* exhibited signals of selection in subgroups 1, 3 and 5—the groups that harbored most of the antibiotic resistant strains in our sample set (Fig. 5). *comA*, which encodes a membrane protein necessary for competence of *N. gonorrhoeae*, was also found to be under selection in a handful of strains that make up subgroup 5. This finding is of interest in regards to the potential for DNA uptake in these strains, since they appear to be primarily DNA donors, rather than recipients in genetic exchanges (Fig. 2). Other genes putatively under selection included a stress response gene, a gene encoding a chaperone protein of the HscA family and a number of proteins: ribosyl transferase, RNA polymerase, and an *arsR* family transcriptional regulator, which were all linked to gene expression. Genes under positive selection in subgroup 3 were also mainly involved in gene expression or DNA

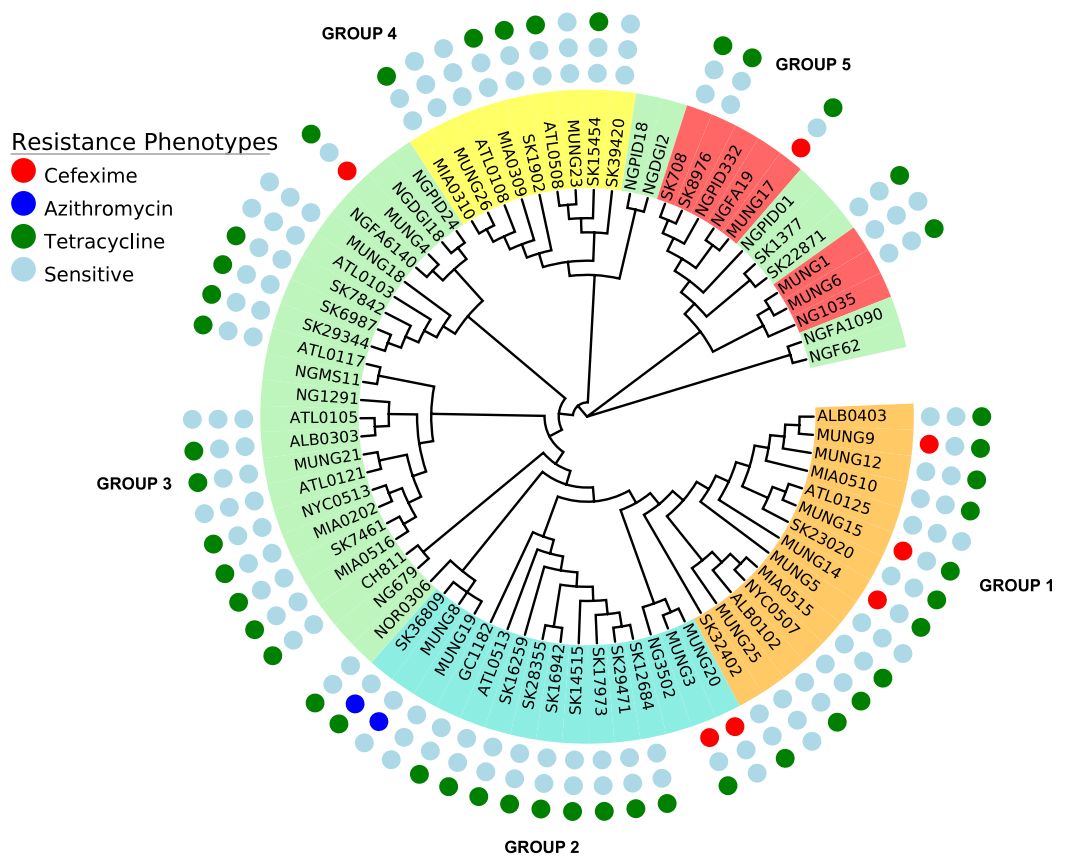


Figure 5 Representation of antibiotic resistance profile of *N. gonorrhoeae* strains across different subgroups of the population. The topology is identical to the ML tree in Fig. 1.

metabolism, including DNA helicase and tRNA pseudo uridine synthase. Most of the genes with known functions, identified to be under positive selection in subgroup 1 were either membrane-associated or transport proteins.

Analysis of known genetic predictors for AMR phenotypes

A substantial amount of research effort over the past 10 years has been devoted to understanding the genetic basis of drug resistance in *N. gonorrhoeae* (Garvin *et al.*, 2008; Unemo & Shafer, 2011; Veal, Nicholas & Shafer, 2002; World Health Organization (WHO), 2012). Since there is an increasing interest in the direct attribution of resistance phenotypes based on genome sequencing, we attempted to ascertain how knowledge of existing variants could be applied to the *N. gonorrhoeae* genomes in this study. We searched for variants known to underlie resistance to 3 antibiotic classes within our study (Table 3). In terms of subgroup distribution, tetracycline resistance was found in each of the 5 population subgroups, azithromycin resistance was present in only 2 of the strains tested (SK36809 and MUNG8) and restricted to subgroup 2 (Fig. 5), and cefixime resistance was found in subgroup 1 and subgroup 2. We identified genes responsible for resistance to the drugs tested in this work using literature searches and the CARD antimicrobial resistance database (McArthur *et al.*, 2013).

The *tetM* resistant determinant, which confers high-level resistance to *tetracycline*, is borne on plasmids and is transferred either through conjugation or transformation (Knapp et al., 1988; Morse et al., 1986; Turner, Gough & Leeming, 1999). It was found in only 5 of the 10 strains with high-level resistance to tetracycline (MIC equal or greater than 16 µg/ml). Strain SK1902, one of the 5 strains with the *tetM* determinant, had a significantly higher MIC (>256 µg/ml) than the rest (see attached Data S3). Other strains with reduced susceptibility or chromosomally-mediated resistance to *tetracycline*, i.e., without the *tetM* determinant do have other corresponding chromosomal mutations on one or more of the resistance loci: *mtrR* (including its promoter), *penB*, *rpsJ*. Only one strain (ATL0508) within the sample set exhibits resistance to *tetracycline* in the laboratory, without the presence of any of the known resistance determinants of the *tetracycline* resistance phenotype.

Different “mosaic” *penA* alleles are thought to have developed from recombination with portions of DNA transferred horizontally from commensal *Neisseria* and/or *N. meningitidis* and underly decreased susceptibility or resistance to cephalosporins by preventing their binding action on the encoded mosaic PBP2 (Ameyama et al., 2002). The mosaic *penA* XXXIV (Ohnishi et al., 2011; Grad et al., 2014; Unemo & Shafer, 2014) had the best positive predictive value of all the known resistance determinants we searched for within our dataset, being present in 6/7 of the strains resistant to *cefixime*. This result echoed the observations made by Grad et al. (2014) in their epidemiologic study of *N. gonorrhoeae* strains. The other loci (i.e., mutations in the *mtrR*, *mtrCDE* operon promoter region and *penB* gene) also proven to enhance the MICs of cephalosporins (Unemo & Shafer, 2011; Warner, Shafer & Jerse, 2008) did not have a similar predictive property within strains in our data set. These variants were seen in 2 out of 7 and 3 out of 7 *cefixime* resistant strains, respectively. MUNG17 is the only strain in the sample set that has an elevated MIC (0.38 µg/mL) to *cefixime* that we could not find any of the known resistance determinants within its genome sequence (see attached Data S1).

Resistance to *azithromycin* can be mediated by mutations in the previously mentioned *penB* and *mtr* operon genes as well as mutations found in the 4 different alleles of the 23S rRNA gene that inhibits protein synthesis (Chisholm et al., 2009; Palmer, Young & Winter, 2008; Starnino, Stefanelli & Neisseria gonorrhoeae Italian Study Group, 2009). The 23S rRNA mutation allele was found in one (SK36809) of the two strains with the *azithromycin* resistance phenotype. The other *azithromycin* resistant strain, MUNG8, did not have the 23S rRNA resistance determinant or any of the other known mutations in the *mtrR* or *penB* loci (see attached Data S1).

CONCLUSIONS

Our study suggested that *N. gonorrhoeae* globally is made up of at least five genetic subpopulations. That individual strains from the subpopulations are from diverse geographical locations confirms the cosmopolitan nature of the pathogen. This suggested a population structure with multiple waves of rapid international expansion. Subgroup 3 strains may be the nexus for gene exchange within the species. Groups 1 and 2 might be

the most recently branched and contain a higher proportion of resistant isolates to more currently used antibiotics. Given the importance of the antibiotic resistant phenotype, these may be emerging lineages that are expanding within *N. gonorrhoeae*. It will require a more extensive study with a broader number of strains to ascertain this suggested evolutionary trend. Our analysis confirms earlier studies that showed an appreciable effect of recombination within the population. This could be playing a role in the evolution of AMR in the bacterium, as strains with resistance phenotypes to currently used antibiotics are mostly within similar population sub-groupings.

Although most of the known predictors that underlie the observed resistance phenotypes were accounted for in the strains we studied, they could not explain some of the phenotypes of several strains. These findings suggested that a broader genome search of a large number of whole genomes from strains of this pathogen could yield candidate novel variants that may explain some of the “missing” antibiotic resistance phenotypes we have observed.

In general, large genome sequencing studies examining a high number of temporally and geographically diverse *N. gonorrhoeae* isolates are essential to elucidate the evolution and diversity of the *N. gonorrhoeae* species as well as associations between genomic content, antibiotic resistance and clinical outcome of treatment.

ACKNOWLEDGEMENTS

Genome sequencing was performed at the Emory Genomics Center. We wish to thank Tauqeer Alam at Emory University, for advice on phylogenetic methods, and Sinisa Vidovic and Sidarath Dev from the Vaccine and Infectious Disease Organization- International Vaccine center at the University of Saskatchewan, Canada for their help in antimicrobial susceptibility determination and preliminary genomic assessments. We also thank the Broad Institute for pre-publication release of genomic data used in this study.

ADDITIONAL INFORMATION AND DECLARATIONS

Funding

Funding for this study was provided by the National Institutes of Health/National Institute of Allergy and Infectious Diseases (NIAD) grants number AI09768, R37 AI021150-29 (WMS) and R43 AI097688 (Timothy D. Read, Deborah Dean and Richard F. Selden), a VA Merit Award from the Medical Research Service of the Department of Veterans Affairs, a Senior Research Career Scientist Award from the VA Medical Research Service of the Department of Veterans Affairs (William M. Shafer) and the Centers for Disease Control and Prevention grant 1H25PS004311 (Carlos Del Rio). This work was also supported by the Saskatchewan Health Research Foundation (Grant# 9127, Research Alliance for the Prevention of Infectious Disease [RAPID]), and funding to Jo-Anne R Dillon from the University of Saskatchewan. The funders had no role in study design, data collection and analysis, decision to publish, or preparation of the manuscript.

Grant Disclosures

The following grant information was disclosed by the authors:

National Institutes of Health/National Institute of Allergy and Infectious Diseases (NIAD): AI09768, R37 AI021150-29, R43 AI097688.

Medical Research Service of the Department of Veterans Affairs.

Senior Research Career Scientist Award.

Centers for Disease Control and Prevention: 1H25PS004311.

Saskatchewan Health Research Foundation: #9127.

Research Alliance for the Prevention of Infectious Disease [RAPID].

University of Saskatchewan.

Competing Interests

Richard F. Selden and Rosemary S. Turingan are employees of NetBio.

Author Contributions

- Matthew N. Ezewudo conceived and designed the experiments, performed the experiments, analyzed the data, contributed reagents/materials/analysis tools, wrote the paper, prepared figures and/or tables, reviewed drafts of the paper.
- Sandeep J. Joseph performed the experiments, analyzed the data, contributed reagents/materials/analysis tools, wrote the paper, prepared figures and/or tables, reviewed drafts of the paper.
- Santiago Castillo-Ramirez performed the experiments, analyzed the data, contributed reagents/materials/analysis tools, wrote the paper, reviewed drafts of the paper.
- Deborah Dean contributed reagents/materials/analysis tools, prepared figures and/or tables, reviewed drafts of the paper.
- Carlos del Rio, Xavier Didelot, Richard F. Selden and Rosemary S. Turingan contributed reagents/materials/analysis tools, reviewed drafts of the paper.
- Jo-Anne Dillon performed the experiments, analyzed the data, contributed reagents/materials/analysis tools, reviewed drafts of the paper.
- William M. Shafer and Magnus Unemo performed the experiments, analyzed the data, contributed reagents/materials/analysis tools, prepared figures and/or tables, reviewed drafts of the paper.
- Timothy D. Read conceived and designed the experiments, contributed reagents/materials/analysis tools, wrote the paper, prepared figures and/or tables, reviewed drafts of the paper.

DNA Deposition

The following information was supplied regarding the deposition of DNA sequences:

Genomic data can be found at <http://www.ncbi.nlm.nih.gov/bioproject/>, BioProject numbers: [PRJNA209307](#), [PRJNA209312](#), [PRJNA209316](#), [PRJNA209319](#), [PRJNA209320](#), [PRJNA209333](#), [PRJNA209334](#), [PRJNA209340](#), [PRJNA209342](#), [PRJNA209343](#), [PRJNA209345](#), [PRJNA209347](#), [PRJNA209351](#), [PRJNA209352](#), [PRJNA209373](#),

PRJNA209375, PRJNA209376, PRJNA209465, PRJNA209466, PRJNA209468, PRJNA209470, PRJNA209476, PRJNA209477, PRJNA209479, PRJNA209788, PRJNA209483, PRJNA209492, PRJNA209493, PRJNA209497, PRJNA209498, PRJNA209499, PRJNA209501, PRJNA209502, PRJNA209504, PRJNA209507, PRJNA209508, PRJNA209510, PRJNA209512, PRJNA209514, PRJNA209517, PRJNA209522, PRJNA209596, PRJNA209599, PRJNA209616, PRJNA209631, PRJNA209633, PRJNA209635, PRJNA209637, PRJNA209638, PRJNA209639, PRJNA209640, PRJNA209642, PRJNA209647, PRJNA209648, PRJNA209650, PRJNA209654, PRJNA209655, PRJNA209659, PRJNA209310, PRJNA209310, PRJNA209335, PRJNA209641.

Supplemental Information

Supplemental information for this article can be found online at <http://dx.doi.org/10.7717/peerj.806#supplemental-information>.

REFERENCES

- Ameyama S, Onodera S, Takahata M, Minami S, Maki N, Endo K, Goto H, Suzuki H, Oishi Y. 2002.** Mosaic-like structure of penicillin-binding protein 2 Gene (penA) in clinical isolates of *Neisseria gonorrhoeae* with reduced susceptibility to cefixime. *Antimicrobial Agents and Chemotherapy* **46**(12):3744–3749 DOI [10.1128/AAC.46.12.3744-3749.2002](https://doi.org/10.1128/AAC.46.12.3744-3749.2002).
- Benjamini Y, Hochberg Y. 1995.** Controlling the false discovery rate: a practical and powerful approach to multiple testing. *Journal of the Royal Statistical Society Series B* **57**(1):289–300.
- Castillo-Ramírez S, Corander J, Marttinen P, Aldeljawi M, Hanage WP, Westh H, Boye K, Gulay Z, Bentley SD, Parkhill J, Holden MT, Feil EJ. 2012.** Phylogeographic variation in recombination rates within a global clone of methicillin-resistant *Staphylococcus aureus*. *Genome Biology* **13**(12):R126–R126 DOI [10.1186/gb-2012-13-12-r126](https://doi.org/10.1186/gb-2012-13-12-r126).
- Chisholm SA, Neal TJ, Alawattegama AB, Birley HDL, Howe RA, Ison CA. 2009.** Emergence of high-level azithromycin resistance in *Neisseria gonorrhoeae* in England and Wales. *The Journal of Antimicrobial Chemotherapy* **64**(2):353–358 DOI [10.1093/jac/dkp188](https://doi.org/10.1093/jac/dkp188).
- Corander J, Marttinen P. 2006.** Bayesian identification of admixture events using multilocus molecular markers. *Molecular Ecology* **15**(10):2833–2843 DOI [10.1111/j.1365-294X.2006.02994.x](https://doi.org/10.1111/j.1365-294X.2006.02994.x).
- Darling ACE, Mau B, Blattner FR, Perna NT. 2004.** Mauve: multiple alignment of conserved genomic sequence with rearrangements. *Genome Research* **14**(7):1394–1403 DOI [10.1101/gr.2289704](https://doi.org/10.1101/gr.2289704).
- Didelot X, Falush D. 2007.** Inference of bacterial microevolution using multilocus sequence data. *Genetics* **175**(3):1251–1266 DOI [10.1534/genetics.106.063305](https://doi.org/10.1534/genetics.106.063305).
- Didelot X, Maiden MCJ. 2010.** Impact of recombination on bacterial evolution. *Trends in Microbiology* **18**(7):315–322 DOI [10.1016/j.tim.2010.04.002](https://doi.org/10.1016/j.tim.2010.04.002).
- Dress AWM, Flamm C, Fritzsche G, Grünwald S, Kruspe M, Prohaska SJ, Stadler PF. 2008.** Noisy: identification of problematic columns in multiple sequence alignments. *Algorithms for Molecular Biology* **3**(7):e7188-3-7 DOI [10.1186/1748-7188-3-7](https://doi.org/10.1186/1748-7188-3-7).
- Drummond AJ, Rambaut A. 2007.** BEAST: Bayesian evolutionary analysis by sampling trees. *BMC Evolutionary Biology* **7**:214 DOI [10.1186/1471-2148-7-214](https://doi.org/10.1186/1471-2148-7-214).

- Edgar RC. 2004.** MUSCLE: a multiple sequence alignment method with reduced time and space complexity. *BMC Bioinformatics* 5:113–113 DOI 10.1186/1471-2105-5-113.
- Felstein J. 1989.** PHYLIP-phylogeny inference package. *Cladistics* 5(2):163–166 DOI 10.1111/j.1096-0031.1989.tb00562.x.
- Fraser C, Hanage WP, Spratt BG. 2007.** Recombination and the nature of bacterial speciation. *Science* 315(5811):476–480 DOI 10.1126/science.1127573.
- Garvin LE, Bash MC, Keys C, Warner DM, Ram S, Shafer WM, Jerse AE. 2008.** Phenotypic and genotypic analyses of *Neisseria gonorrhoeae* isolates that express frequently recovered PorB PIA variable region types suggest that certain P1a porin sequences confer a selective advantage for urogenital tract infection. *Infection and Immunity* 76(8):3700–3709 DOI 10.1128/IAI.00265-08.
- Gladman S, Seemann T. (2012, December 22).** Velvet Optimiser. Victorian Bioinformatics Consortium. Available at <http://www.vicbioinformatics.com/software.velvetoptimiser.shtml> (accessed 30 May 2014).
- Götz S, Arnold R, Sebastián-León P, Martín-Rodríguez S, Tischler P, Jehl M-A, Dopazo J, Rattei T, Conesa A. 2011.** B2G-FAR, a species-centered GO annotation repository. *Journal of Gerontology* 27(7):919–924 DOI 10.1093/bioinformatics/btr059.
- Grad YH, Kirkcaldy RD, Trees D, Dordel J, Harris SR, Goldstein E, Weinstock H, Parkhill J, Hanage WP, Bentley S, Lipsitch M. 2014.** Genomic epidemiology of *Neisseria gonorrhoeae* with reduced susceptibility to cefixime in the USA: a retrospective observational study. *The Lancet Infectious Diseases* 14(3):220–226 DOI 10.1016/S1473-3099(13)70693-5.
- Hagman KE, Shafer WM. 1995.** Transcriptional control of the mtr efflux system of *Neisseria gonorrhoeae*. *Journal of Bacteriology* 177(14):4162–4165.
- Jolley KA, Maiden MCJ. 2010.** BIGSdb: scalable analysis of bacterial genome variation at the population level. *BMC Bioinformatics* 11:595 DOI 10.1186/1471-2105-11-595.
- Joseph SJ, Didelot X, Rothschild J, de Vries HJC, Morré SA, Read TD, Dean D. 2012.** Population genomics of *Chlamydia trachomatis*: insights on drift, selection, recombination, and population structure. *Molecular Biology and Evolution* 29(12):3933–3946 DOI 10.1093/molbev/mss198.
- Knapp JS, Johnson SR, Zenilman JM, Roberts MC, Morse SA. 1988.** High-level tetracycline resistance resulting from TetM in strains of *Neisseria* spp., *Kingella denitrificans*, and *Eikenella corrodens*. *Antimicrobial Agents and Chemotherapy* 32(5):765–767 DOI 10.1128/AAC.32.5.765.
- Lawson DJ, Hellenthal G, Myers S, Falush D. 2012.** Inference of population structure using dense haplotype data. *PLoS Genetics* 8(1):e1002453 DOI 10.1371/journal.pgen.1002453.
- Li L, Stoekert CJ, Roos DS. 2003.** OrthoMCL: identification of ortholog groups for eukaryotic genomes. *Genome Research* 13(9):2178–2189 DOI 10.1101/gr.1224503.
- Lindberg R, Fredlund H, Nicholas R, Unemo M. 2007.** *Neisseria gonorrhoeae* isolates with reduced susceptibility to cefixime and ceftriaxone: association with genetic polymorphisms in penA, mtrR, porB1b, and ponA. *Antimicrobial Agents and Chemotherapy* 51(6):2117–2122 DOI 10.1128/AAC.01604-06.
- McArthur AG, Waglehner N, Nizam F, Yan A, Azad MA, Baylay AJ, Bhullar K, Canova MJ, De Pascale G, Ejim L, Kalan L, King AM, Koteva K, Morar M, Mulvey MR, O'Brien JS, Pawlowski AC, Piddock LJV, Spanogiannopoulos P, Sutherland AD, Tang I, Taylor PL, Thaker M, Wang WL, Yan M, Yu T, Wright GD. 2013.** The comprehensive antibiotic resistance database. *Antimicrobial Agents and Chemotherapy* 57(7):3348–3357 DOI 10.1128/AAC.00419-13.
- Morse SA, Johnson SR, Biddle JW, Roberts MC. 1986.** High-level tetracycline resistance in *Neisseria gonorrhoeae* is result of acquisition of streptococcal tetM determinant. *Antimicrobial Agents and Chemotherapy* 30(5):664–670 DOI 10.1128/AAC.30.5.664.

- Ohneck EA, Zalucki YM, Johnson PJT, Dhulipala V, Golparian D, Unemo M, Jerse AE, Shafer WM. 2011. A novel mechanism of high-level, broad-spectrum antibiotic resistance caused by a single base pair change in *Neisseria gonorrhoeae*. *mBio* 2(5):e00187-11 DOI 10.1128/mBio.00187-11.
- Ohnishi M, Golparian D, Shimuta K, Saika T, Hoshina S, Iwasaku K, Nakayama S, Kitawaki J, Unemo M. 2011. Is *Neisseria gonorrhoeae* initiating a future era of untreatable gonorrhea?: detailed characterization of the first strain with high-level resistance to ceftriaxone. *Antimicrobial Agents and Chemotherapy* 55(7):3538–3545 DOI 10.1128/AAC.00325-11.
- O'Rourke M, Stevens E. 1993. Genetic structure of *Neisseria gonorrhoeae* populations: a non-clonal pathogen. *Journal of General Microbiology* 139(11):2603–2611 DOI 10.1099/00221287-139-11-2603.
- Palmer HM, Young H, Winter A. 2008. Emergence and spread of azithromycin-resistant *Neisseria gonorrhoeae* in Scotland. *Journal of Antimicrobial Chemotherapy* 62(3):490–494 DOI 10.1093/jac/dkn235.
- Rocha EPC, Smith JM, Hurst LD, Holden MTG, Cooper JE, Smith NH, Feil EJ. 2006. Comparisons of dN/dS are time dependent for closely related bacterial genomes. *Journal of Theoretical Biology* 239(2):226–235 DOI 10.1016/j.jtbi.2005.08.037.
- Sawyer S. 1989. Statistical tests for detecting gene conversion. *Molecular Biology and Evolution* 6(5):526–538.
- Schmieder R, Edwards R. 2011. Fast identification and removal of sequence contamination from genomic and metagenomic datasets. *PLoS ONE* 6(3):e17288 DOI 10.1371/journal.pone.0017288.
- Smith NH, Maynard Smith J, Spratt BG. 1995. Sequence evolution of the *porB* gene of *Neisseria gonorrhoeae* and *Neisseria meningitidis*: evidence of positive Darwinian selection. *Molecular Biology and Evolution* 12(3):363–370.
- Stamatakis A. 2014. RAxML version 8: a tool for phylogenetic analysis and post-analysis of large phylogenies. *Bioinformatics* 30(9):1312–1313 DOI 10.1093/bioinformatics/btu033.
- Starnino S, Stefanelli P, *Neisseria gonorrhoeae* Italian Study Group. 2009. Azithromycin-resistant *Neisseria gonorrhoeae* strains recently isolated in Italy. *The Journal of Antimicrobial Chemotherapy* 63(6):1200–1204 DOI 10.1093/jac/dkp118.
- Suyama M, Torrents D, Bork P. 2006. PAL2NAL: robust conversion of protein sequence alignments into the corresponding codon alignments. *Nucleic Acids Research (Suppl 2)*:609–612 DOI 10.1093/nar/gkl315.
- Talavera G, Castresana J. 2007. Improvement of phylogenies after removing divergent and ambiguously aligned blocks from protein sequence alignments. *Systematic Biology* 56(4):564–577 DOI 10.1080/10635150701472164.
- Tamura K, Stecher G, Peterson D, Filipski A, Kumar S. 2013. MEGA6: molecular evolutionary genetics analysis version 6.0. *Molecular Biology and Evolution* 30(12):2725–2729 DOI 10.1093/molbev/mst197.
- Tang J, Hanage WP, Fraser C, Corander J. 2009. Identifying currents in the gene pool for bacterial populations using an integrative approach. *PLoS Computational Biology* 5(8):e1000455 DOI 10.1371/journal.pcbi.1000455.
- Thakur SD, Levett PN, Horsman GB, Dillon J-AR. 2014. Molecular epidemiology of *Neisseria gonorrhoeae* isolates from Saskatchewan, Canada: utility of NG-MAST in predicting antimicrobial susceptibility regionally. *Sexually Transmitted Infections* 90(4):297–302 DOI 10.1136/sextrans-2013-051229.

- Tomberg J, Unemo M, Ohnishi M, Davies C, Nicholas RA. 2013.** Identification of amino acids conferring high-level resistance to expanded-spectrum cephalosporins in the penA gene from *Neisseria gonorrhoeae* strain H041. *Antimicrobial Agents and Chemotherapy* **57**(7):3029–3036 DOI [10.1128/AAC.00093-13](https://doi.org/10.1128/AAC.00093-13).
- Turner A, Gough KR, Leeming JP. 1999.** Molecular epidemiology of tetM genes in *Neisseria gonorrhoeae*. *Sexually Transmitted Infections* **75**(1):60–66 DOI [10.1136/sti.75.1.60](https://doi.org/10.1136/sti.75.1.60).
- Unemo M, Golparian D, Hellmark B. 2014.** First three *Neisseria gonorrhoeae* isolates with high-level resistance to azithromycin in Sweden: a threat to currently available dual-antimicrobial regimens for treatment of gonorrhea? *Antimicrobial Agents and Chemotherapy* **58**(1):624–625 DOI [10.1128/AAC.02093-13](https://doi.org/10.1128/AAC.02093-13).
- Unemo M, Golparian D, Nicholas R. 2012.** High-level cefixime-and ceftriaxone-resistant *Neisseria gonorrhoeae* in France: novel penA mosaic allele in a successful international clone causes treatment failure. *Antimicrobial Agents and Chemotherapy* **56**(3):1273–1280 DOI [10.1128/AAC.05760-11](https://doi.org/10.1128/AAC.05760-11).
- Unemo M, Shafer WM. 2011.** Antibiotic resistance in *Neisseria gonorrhoeae*: origin, evolution, and lessons learned for the future. *Annals of the New York Academy of Sciences* **1230**(1):E19–E28 DOI [10.1111/j.1749-6632.2011.06215.x](https://doi.org/10.1111/j.1749-6632.2011.06215.x).
- Unemo M, Shafer WM. 2014.** Antimicrobial resistance in *Neisseria gonorrhoeae* in the 21st century: past, evolution, and future. *Clinical Microbiology Reviews* **27**(3):587–613 DOI [10.1128/CMR.00010-14](https://doi.org/10.1128/CMR.00010-14).
- Veal WL, Nicholas RA, Shafer WM. 2002.** Overexpression of the MtrC-MtrD-MtrE efflux pump due to an mtrR mutation is required for chromosomally mediated penicillin resistance in *Neisseria gonorrhoeae*. *Journal of Bacteriology* **184**(20):5619–5624 DOI [10.1128/JB.184.20.5619-5624.2002](https://doi.org/10.1128/JB.184.20.5619-5624.2002).
- Vidovic S, Caron C, Taheri A, Thakur SD, Read TD, Kusalik A, Dillon J-AR. 2014.** Using crude whole-genome assemblies of *neisseria gonorrhoeae* as a platform for strain analysis: clonal spread of gonorrhea infection in Saskatchewan, Canada. *Journal of Clinical Microbiology* **52**(10):3772–3776 DOI [10.1128/JCM.01502-14](https://doi.org/10.1128/JCM.01502-14).
- Warner DM, Shafer WM, Jerse AE. 2008.** Clinically relevant mutations that cause derepression of the *Neisseria gonorrhoeae* MtrC-MtrD-MtrE Efflux pump system confer different levels of antimicrobial resistance and in vivo fitness. *Molecular Microbiology* **70**(2):462–478 DOI [10.1111/j.1365-2958.2008.06424.x](https://doi.org/10.1111/j.1365-2958.2008.06424.x).
- World Health Organization (WHO). 2012.** Global action plan to control the spread and impact of antimicrobial resistance in *Neisseria gonorrhoea*. Geneva: World Health Organization.
- Yang ZZ. 2007.** PAML 4: phylogenetic analysis by maximum likelihood. *Molecular Biology and Evolution* **24**(8):1586–1591 DOI [10.1093/molbev/msm088](https://doi.org/10.1093/molbev/msm088).
- Zerbino DR, Birney E. 2008.** Velvet: algorithms for de novo short read assembly using de Bruijn graphs. *Genome Research* **18**(5):821–829 DOI [10.1101/gr.074492.107](https://doi.org/10.1101/gr.074492.107).
- Zhao S, Duncan M, Tomberg J, Davies C, Unemo M, Nicholas RA. 2009.** Genetics of chromosomally mediated intermediate resistance to ceftriaxone and cefixime in *Neisseria gonorrhoeae*. *Antimicrobial Agents and Chemotherapy* **53**(9):3744–3751 DOI [10.1128/AAC.00304-09](https://doi.org/10.1128/AAC.00304-09).
- Zhou Z, McCann A, Litrup E, Murphy R, Cormican M, Fanning S, Brown D, Guttman DS, Brisse S, Achtman M. 2013.** Neutral genomic microevolution of a recently emerged pathogen, salmonella enterica serovar agona. *PLoS Genetics* **9**(4):e1003471 DOI [10.1371/journal.pgen.1003471](https://doi.org/10.1371/journal.pgen.1003471).