

Long-Term Effect of Population Screening for Diabetes on Cardiovascular Morbidity, Self-Rated Health, and Health Behavior

Justin B. Echouffo-Tcheugui, PhD¹

Rebecca K. Simmons, PhD¹

A. Toby Prevost, PhD²

Kate M. Williams, PhD³

Ann-Louise Kinmonth, MD³

Nicholas J. Wareham, PhD¹

Simon J. Griffin, DM^{1,3}

¹MRC Epidemiology Unit, University of Cambridge School of Clinical Medicine, Cambridge, United Kingdom

²Department of Primary Care and Public Health Sciences, School of Medicine, King's College London, London, United Kingdom

³The Primary Care Unit, Cambridge Institute of Public Health, Cambridge, United Kingdom

Conflicts of interest: authors report none.

CORRESPONDING AUTHOR

Simon J. Griffin, DM
MRC Epidemiology Unit
University of Cambridge School of Clinical Medicine
Box 285 Institute of Metabolic Science
Cambridge Biomedical Campus
Cambridge, CB2 0QQ, UK
sjg49@medschl.cam.ac.uk

ABSTRACT

PURPOSE There is limited trial evidence concerning the long-term effects of screening for type 2 diabetes on population morbidity. We examined the effect of a population-based diabetes screening program on cardiovascular morbidity, self-rated health, and health-related behaviors.

METHODS We conducted a pragmatic, parallel-group, cluster-randomized controlled trial of diabetes screening (the ADDITION-Cambridge study) including 18,875 individuals aged 40 to 69 years at high risk of diabetes in 32 general practices in eastern England (27 practices randomly allocated to screening, 5 to no-screening for control). Of those eligible for screening, 466 (2.9%) were diagnosed with diabetes. Seven years after randomization, a random sample of patients was sent a postal questionnaire: 15% from the screening group (including diabetes screening visit attenders and non-attenders) and 40% from the no-screening control group. Self-reported cardiovascular morbidity, self-rated health (using the SF-8 Health Survey and EQ-5D instrument), and health behaviors were compared between trial groups using an intention-to-screen analysis.

RESULTS Of the 3,286 questionnaires mailed out, 1,995 (61%) were returned, with 1,945 included in the analysis (screening: 1,373; control: 572). At 7 years, there were no significant differences between the screening and control groups in the proportion of participants reporting heart attack or stroke (OR = 0.90, 95% CI, 0.71-1.15); SF-8 physical health summary score as an indicator of self-rated health status (β -0.33, 95% CI, -1.80 to 1.14); EQ-5D visual analogue score (β : 0.80, 95% CI, -1.28 to 2.87); total physical activity (β 0.50, 95% CI, -4.08 to 5.07); current smoking (OR 0.97, 95% CI, 0.72 to 1.32); and alcohol consumption (β 0.14, 95% CI, -1.07 to 1.35).

CONCLUSIONS Invitation to screening for type 2 diabetes appears to have limited impact on population levels of cardiovascular morbidity, self-rated health status, and health behavior after 7 years.

Ann Fam Med 2015;13:149-157. doi: 10.1370/afm.1737.

INTRODUCTION

Population screening has been recommended by many national organizations.^{1,2} Whether the overall benefits of screening for diabetes outweigh any associated harms is uncertain, however.³⁻⁵ It is important to quantify the population impact of screening. Even relatively modest adverse effects for the majority of participants who screen negative may offset a large benefit to the few who screen positive.

Screening for diabetes may affect physical and psychological morbidity and behavioral outcomes at the population level.⁵ Some studies have suggested that diabetes screening is associated with a reduction in risk of cardiovascular disease (CVD), but most research is restricted to the small subgroup of screened people found to have diabetes.⁶⁻¹⁰ A modeling study¹¹ showed that, compared with no screening, population-based diabetes screening strategies might reduce the overall incidence of myo-

cardial infarction. Such modeling studies, however, are only as robust as their underlying assumptions and highlight the need for data from randomized trials. It is also important to measure self-rated health, which predicts mortality and morbidity independent of chronic disease,^{12,13} and which is often overlooked in screening programs.¹⁴ To date, diabetes screening studies including self-rated health and functional assessments have focused on screen-detected individuals in the short- or medium-term,¹⁵⁻¹⁷ or on those with negative screening tests.¹⁸ Most studies have been small and observational, and few have included formal comparison with an unscreened (control) group.¹⁹

Participation in a screening program can encourage behavior change through provision of information about disease risk.^{5,20-22} Conversely, screening might falsely reassure some people and contribute to adoption of unhealthy behaviors, especially among those who screen negative.²³ Evidence about the effects of diabetes screening on health-related behaviors is scarce, although we have previously shown no adverse effects up to 15 months after a negative screening test.¹⁸ Previous studies, however, were not randomized trials and/or relied on measures of behavioral intentions rather than actual behavior.^{18,24}

To examine the effect of a diabetes screening program on cardiovascular morbidity, self-rated health, and health-related behavior, we conducted a survey at 7 years follow-up within a cluster-randomized controlled trial of screening for type 2 diabetes in primary care, the ADDITION-Cambridge study.²⁵

METHODS

ADDITION-Cambridge is a pragmatic, primary care-based, cluster-randomized study consisting of 2 phases: (1) a trial of screening for type 2 diabetes, and (2) a treatment trial in individuals with screen-detected diabetes. The design and rationale have previously been reported.²⁵ This paper outlines results from a survey embedded in the screening phase of the trial. Ethical approval was granted by Cambridgeshire Research Ethics Committee (ref 02/5/54); all participants gave written informed consent.

A total of 138 general practices in Eastern England were approached, and 63 agreed to participate. Practices were independently randomized to screening or control. This analysis includes 27 screening practices and 5 control practices (Figure 1). Since 99% of the English population is registered with general practitioners, the sampling frame is population-based.

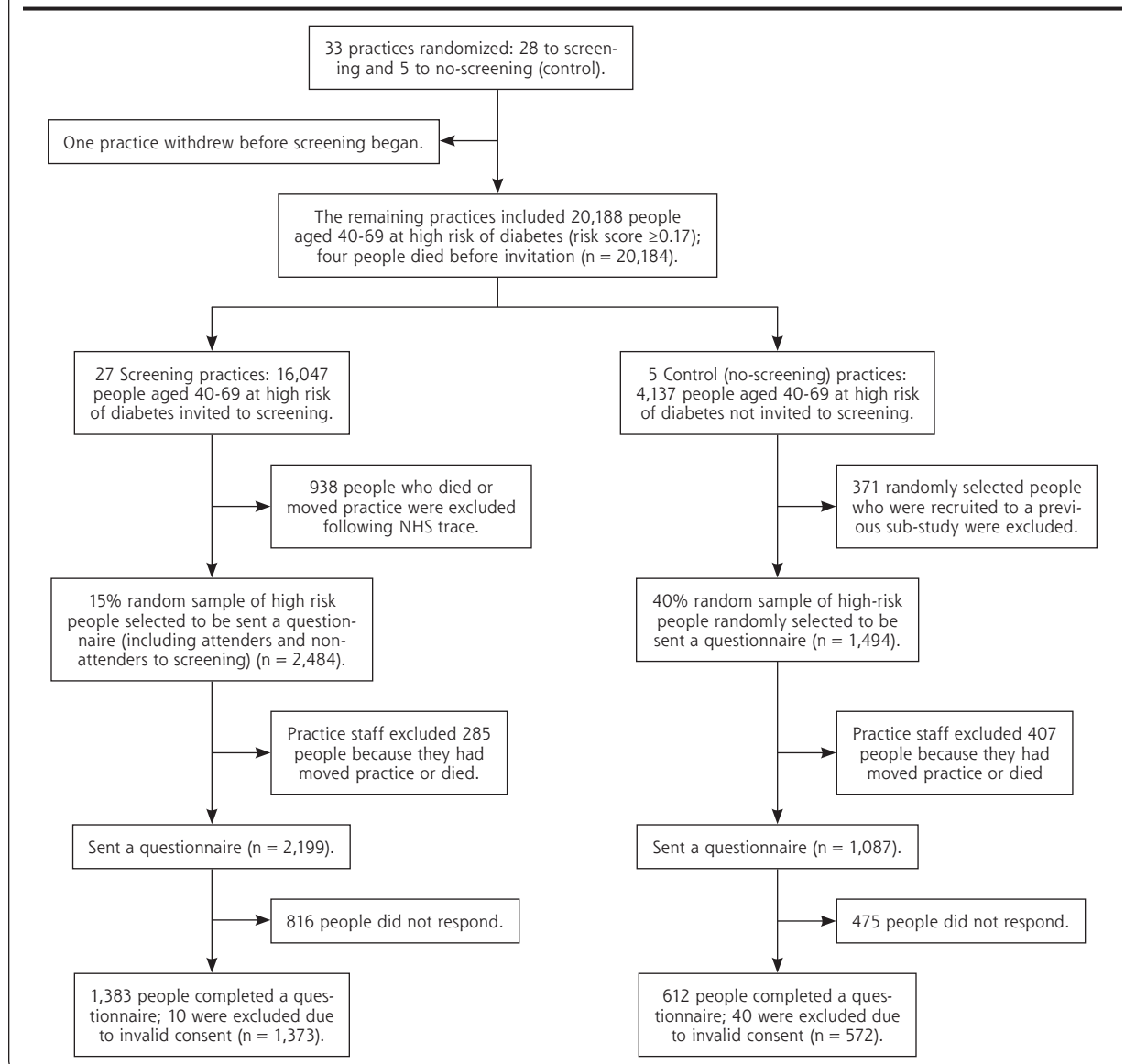
In the screening practices, people aged 40 to 69 years without known diabetes but at high risk of having undiagnosed type 2 diabetes were identified from

the practice registers using a previously validated risk score²⁶ and invited to attend a stepwise screening program between January 2002 and March 2006. The screening program²⁷ included random capillary blood glucose and glycated hemoglobin (HbA_{1c}) testing at an initial practice visit, fasting capillary blood glucose testing at a subsequent visit, and finally a standard 75g oral glucose tolerance test to confirm the diagnosis (WHO 1999 criteria).²⁸ Exclusion criteria included pregnancy, lactation, an illness with a likely prognosis of less than 1 year, and a psychiatric illness likely to limit study involvement or invalidate informed consent. Practice teams were notified of the test results with a clear statement of whether the individual met diagnostic criteria for type 2 diabetes. Participants identified as having diabetes were subsequently managed intensively or routinely according to the treatment regimen to which their practice was allocated. Family physicians, practice nurses, and participants in the intensive treatment group were educated in target-driven management (using medication and promotion of healthy lifestyles) of hyperglycemia, blood pressure, and cholesterol.^{25,29,30} Individuals in the routine care group received the standard pattern of diabetes care according to current recommendations.³¹ Practice staff were requested to inform individuals who did not have diabetes, "This test is normal, you do not have diabetes."

In the no-screening control practices, people at high risk of having diabetes were identified using the same validated risk score, but were not invited for screening. Practice staff were not given the risk score information.

Questionnaire Survey

A postal questionnaire survey was conducted between May and October 2009, 7 years after practice randomization. The 32 participating practices included 20,184 potential participants (Figure 1). Of these, patients no longer registered with the practice, deceased patients, and patients from the no-screening control practices who had been randomly selected to participate in a previously reported sub-study of the ADDITION-Cambridge trial¹⁹ were removed from the study population to avoid overburdening research participants. A computer-generated random sample was drawn from this sampling frame and a list sent to each general practice. Practice staff then excluded individuals who were unable to complete the questionnaire because of a terminal illness, a major psychiatric disorder, or any other condition that might invalidate their consent or ability to fill in the questionnaire. Practice staff sent a cover letter, an information sheet, a consent form, a questionnaire, and a freepost envelope to each individual. A reminder was sent to nonresponders after 4 weeks.

Figure 1. Practice and participant flow in the ADDITION-Cambridge diabetes screening trial.

The questionnaire elicited patients' experience of cardiovascular disease events, prescription of cardioprotective medications, self-rated health status, health-related behaviors, and health service usage over the preceding 3 months.³² Functional status and health utility were measured using the UK versions of the SF-8³³ and the EQ-5D, respectively.³⁴ Physical activity levels were measured using the short-form International Physical Activity Questionnaire.³⁵ Dietary behavior was assessed using simple questions about consumption of green leafy vegetables (cabbage, broccoli, etc), "other" vegetables (peas, carrots, beans, etc), fresh fruit, whole meal or brown bread, oily fish, and meat products derived from a validated food frequency questionnaire.³⁶

Outcomes

We tracked 9 outcomes:

- self-reported prevalence of cardiovascular events, hypertension, and dyslipidemia
- proportion of patients prescribed cardioprotective medication (glucose-lowering drugs, antihypertensives, lipid-lowering drugs, and antiplatelet medication)
- functional status (SF-8 physical and mental health summary scores)
- health utility (EQ-5D and visual analog scores)
- energy expenditure related to physical activity in metabolic equivalent of task (MET) hours per week for total, vigorous, moderate, and walking activities, and sedentary time measured in hours sitting per day

- proportion of people consuming 1 or more portions per day of particular groups of foods
- proportion of people currently smoking
- number of units of alcohol consumed per week
- health service use within the previous 3 months

Statistical Analysis

We analyzed the data primarily by intention-to-screen for all outcomes. End points were compared between trial arms at 7 years after screening using logistic regression for categorical outcomes and linear regression for continuous outcomes, with robust standard errors to account for clustering by practice. Where non-normality for continuous outcomes could not be resolved by log-transformation, 95% CIs were estimated using semi-parametric bias-corrected and accelerated bootstrap regression with 1,000 resamples. Negative binomial regression (appropriate for overdispersed count data) was used to compare the number of hospital admissions, family physician consultations, and nurse consultations. The primary comparison was between the screening group (intensive treatment and routine care arms) and the no-screening (control) group. Subgroup comparisons were also conducted between the screening attenders and nonattenders, and between nonattenders and controls. Analyses were conducted to examine baseline differences in risk score variables between responders and non-responders to the questionnaire, both overall and by trial group. Analyses were completed using Stata v13 (Stata Corp).

Sample Size

Given the uneven (1:6) randomization ratio of control and screening practices, a higher proportion of participants were sampled in the control group. Assuming a 95% confidence level and 80% power, we calculated detectable differences for the SF-36 and the EQ-5D index.³⁷ Assuming a 50% response rate¹⁹ and 33 patients per cluster, a 30% sample from the control practices and a 15% sample from the intervention practices corresponded to an effective sample of 560 controls and 1,200 intervention participants returning questionnaires, with a design effect ranging from 1 to 3. This would allow the detection of at least a 4-point difference between groups in any mean SF-36 domain score and a 0.022-point difference in mean EQ-5D index. Given the high correlation between the much briefer SF-8 and the SF-36,³³ similar effect sizes could be detected using the SF-8. Based on the same assumptions, detectable differences in the proportion with stroke and/or heart attack ranged from 0.99 to 2.78%. Estimates of heart attack and stroke frequencies (1%-5%) and intraclass correlation coefficients at the

postcode level were derived from the Health Survey for England 2008.³⁸ We further inflated the number of control participants sent a questionnaire from 30% to 40%, since we did not know how many had died or moved away from their practice.

RESULTS

In the whole screening program, 466 participants (2.9% of those eligible for screening) were diagnosed with diabetes.³⁹ Of the 3,286 questionnaires sent out, 1,995 (61%) were returned by eligible participants; 50 questionnaires had invalid consent. The response rate was 62% in the screening group and 53% in the control group. The analysis includes 1,945 individuals: 1,221 screening-attenders (47 with screen-detected diabetes), 152 screening non-attenders, and 572 no-screening control participants. Responders to the questionnaire were more likely to be older, to be female, to have been prescribed antihypertensive medication, to have a low body mass index (BMI), and to have exhibited a higher risk of undiagnosed diabetes at baseline than non-responders (all *P* values <0.05, data not shown). Patterns of response were similar between screening and control groups.

Screening and control groups were well balanced for practice and patient characteristics (Table 1). Participants had a median age of 60 years at entry into the study. The majority of respondents were male; the majority were overweight; 49% of individuals were prescribed antihypertensive medication. Most responders to the survey were of Caucasian ethnicity (99%), were retired or in part-time employment, and had an intermediate or high socioeconomic level (data not shown).

There were no significant differences between groups in the proportion of participants reporting cardiovascular disease, hypertension, and prescription of antihypertensives or glucose-lowering medication at 7 years (Table 2). Higher numbers of participants in the control group reported dyslipidemia and prescription of lipid-lowering and antiplatelet medication than in the screening group.

There was no difference in functional status (SF-8 physical and mental health summary scores), health utility (EQ-5D results), smoking status, and alcohol consumption levels between the screening and control groups (Table 3). Participants from both groups reported similar dietary patterns and similar levels of physical activity and time spent sitting.

There was no difference in total number of reported hospital and primary care (family physician or primary care nurse) consultations between the screening and the control groups (Table 3).

Adoption of Unhealthy Behaviors (Investigation of a False Reassurance Effect)

The 794 respondents who screened negative at their initial screening test (random blood glucose and HbA_{1c}) were similar to the no-screening control group in age, sex, BMI, and prescribed steroids; but they had a slightly lower diabetes risk score and were less likely to have been prescribed antihypertensive medication. Comparisons between respondents who screened negative and those in the no-screening control group showed no evidence of less healthy behaviors among those who might have been reassured by their test result, with no significant differences for any self-reported health behaviors.

Effect of Screening Attendance

We found no significant differences between screening attenders and non-attenders in self-reported prevalence of CVD, self-rated health status, or self-reported health behaviors. Similarly, non-attenders were similar to control participants for all outcome measures.

DISCUSSION

After 7 years of follow-up, a single round of stepwise screening for type 2 diabetes among high-risk people aged 40 to 69 years was not associated with a significant reduction in self-reported CVD morbidity or positive changes in self-reported health behaviors. Diabetes screening did not adversely affect self-rated functional status or health utility. Our findings also suggest that attendance at a primary care-based diabetes screening program does not lead to the adoption of unhealthy behaviors through false reassurance or to an increase in subsequent health service use.

Our evaluation of CVD morbidity differs from that conducted in previous diabetes screening studies, which have exclusively examined people with screen-detected disease, rather

than all those invited for screening as we have done in this trial.^{6-10,40} There are several possible explanations why our screening program may not have contributed to a reduction in population-level CVD morbidity.

Ad hoc, opportunistic screening for diabetes at the primary care level is ongoing in the United Kingdom, following recommendations from organizations such as Diabetes UK⁴¹ and more recently the English Department of Health.¹ The extent of such opportunistic diabetes screening, however, may have been limited.⁴²

Table 1. Baseline Practice and Patient Characteristics in the ADDITION-Cambridge Screening Trial; Data are Median (Inter-quartile Range) Unless Otherwise Indicated

	Screening Group	No-Screening Control Group ^a
Practices	n = 27	n = 5
Practice list size	6,610 (5,144-9,966)	8,827 (8,694-10,986)
Crude prevalence of diabetes, %	2.9 (2.5-3.5)	3.2 (3.0-3.4)
Physician full-time equivalents	3.5 (2.5-5.0)	4.5 (4.0-5.0)
Index of Multiple Deprivation score ^b	11.7 (6.9-11.6)	15.7 (9.1-15.7)
Participants	n = 1,373	n = 572
Age, years	60 (54-65)	60 (54-65)
Men, n (%)	839 (61.1)	360 (62.9)
BMI, kg/m ²	29.4 (27.7-32.3)	29.6 (27.8-32.2)
Cambridge diabetes risk score	0.36 (0.25-0.52)	0.38 (0.25-0.56)
Prescribed anti-hypertensive medication, n (%)	654 (47.6)	298 (52.1)
Prescribed steroids, n (%)	68 (5.0)	17 (3.0)

BMI = body mass index.

^aThere were no statistically significant differences between groups.

^bThe Index of Multiple Deprivation combines a number of indicators, chosen to cover a range of economic, social and housing issues, into a single deprivation score for each small area in England. This allows each area to be ranked relative to one another according to their level of deprivation. A high Index of Multiple Deprivation score indicates a high level of deprivation.

Table 2. Impact of Screening on Cardiovascular Morbidity and the Prescription of Cardioprotective Drugs in the ADDITION-Cambridge Trial at 7-year Follow-up

	Screening Group	No-screening Control Group	Odds Ratio (95%CI) ^a
Cardiovascular morbidity, n (%)			
Self-reported cardiovascular events ^b	142 (12.4)	67 (13.5)	0.90 (0.71-1.15)
Self-reported hypertension	809 (60.9)	352 (63.4)	0.90 (0.75-1.08)
Self-reported dyslipidemia	502 (41.2)	254 (48.3)	0.75 (0.64-0.88)
Prescribed medication, n (%)			
Antihypertensive drugs	853 (72.5)	369 (74.7)	0.89 (0.73-1.10)
ACE inhibitors	546 (46.4)	244 (49.4)	0.89 (0.75-1.06)
Lipid lowering drugs	507 (43.1)	244 (49.4)	0.78 (0.63-0.95)
Antiplatelet drugs	335 (28.5)	185 (37.5)	0.67 (0.53-0.83)
Glucose lowering drugs	97 (8.3)	48 (9.7)	0.84 (0.57-1.21)

ACE = angiotensin-converting enzyme.

^aAccounting for clustering by general practice.

^bA cardiovascular event was defined as myocardial infarction or stroke.

Table 3. Impact of Screening on Self-rated Health Status and Self-reported Health Behaviors in the ADDITION-Cambridge Trial at 7-year Follow-up

	Screening Group	No-screening Control Group	Intervention Effect (95%CI) ^a
Self-rated health status			
Mean SF-8 physical health summary score (scale 0 to 100), score (SD)	47.4 (9.8)	47.8 (10.3)	-0.33 (-1.80 to 1.14)
Mean SF-8 mental health summary score (scale 0 to 100), score (SD)	51.8 (8.6)	52.2 (8.1)	-0.38 (-1.33 to 0.57)
Mean EQ-5D score (scale -0.3 to 1.0), score (SD)	0.87 (0.16)	0.87 (0.15)	0.002 (-0.02 to 0.02)
Mean EuroQol visual acuity score (scale 0 to 100), score (SD)	74.5 (16.5)	73.7 (17.2)	0.80 (-1.28 to 2.87)
Self-reported health behavior			
Current smoker, n (%)	143 (10.5)	61 (10.7)	0.97 (0.72-1.32)
Alcohol consumption (units per week), mean (SD)	8.2 (11.9)	8.1 (11.1)	0.14 (-1.07 to 1.35)
1 or more portions fresh fruit per day, n (%)	627 (46.4)	249 (43.8)	1.11 (0.93-1.33)
1 or more portions green leafy vegetables per day, n (%)	339 (25.2)	117 (20.7)	1.28 (0.99-1.66)
1 or more portions other vegetables per day, n (%)	382 (28.5)	142 (25.1)	1.19 (0.99-1.43)
5 or more portions oily fish per week, n (%)	27 (2.1)	10 (1.8)	1.14 (0.61-2.11)
5 or more portions meat products per week, n (%)	104 (7.8)	51 (9.1)	0.84 (0.64-1.11)
1 or more portions whole meal (brown) bread per day, n (%)	414 (30.8)	167 (29.9)	1.04 (0.89-1.22)
Total physical activity (MET-hours per week), mean (SD)	45.1 (51.3)	44.6 (51.9)	0.50 (-4.08 to 5.07)
Vigorous activity (MET-hours per week), mean (SD)	16.2 (31.7)	15.3 (32.5)	0.89 (-2.09 to 3.86)
Walking activity (MET-hours per week), mean (SD)	22.6 (21.1)	21.2 (21.0)	1.35 (-1.17 to 3.86)
Sedentary time (hours per day), mean (SD)	5.3 (2.7)	5.4 (2.8)	-0.11 (-0.32 to 0.09)
Number of hospital admissions in past 3 months, mean (SD)	0.11 (0.37)	0.13 (0.44)	0.85 (0.58-1.25) ^b
Number of family physician consultations in past 3 months, mean (SD)	1.1 (1.3)	1.2 (1.5)	0.93 (0.78-1.12) ^b
Number of nurse consultations in past 3 months, mean (SD)	0.8 (1.7)	0.8 (1.7)	1.04 (0.79-1.36) ^b

SF-8 = 8-item short form health survey; EQ-5D = EuroQual measure of health outcome; MET = Metabolic equivalents of physical activity.

^aBeta coefficients (95% CI) for continuous outcomes (representing the mean difference between groups) and odds ratios (95% CI) for categorical outcomes, accounting for clustering by general practice.

^bNegative binomial regression (appropriate for over-dispersed count data) was used to compare the number of hospital admissions, family physician consultations, and nurse consultations. The effect sizes can be interpreted as ratios of incidences.

UK primary care has continually improved in the detection and management of CVD risk factors,⁴³ partly because of the pay-for-performance scheme of remuneration for family physicians.⁴⁴

A moderate proportion of questionnaire recipients did not respond. Those that did respond were more likely to be older, to be female, to have been prescribed antihypertensive medication, to have a low

BMI, and to have a lower risk of undiagnosed diabetes. No clear direction of effect for this possible response bias can be identified.

Screening was not repeated, potentially limiting the additional benefits that could have been derived in those who might have developed diabetes after the first round of screening.

A survivor effect may also have played a role. Comparing survivors at this stage may show no difference because preventable deaths may have occurred in the control group between randomization and the time of the survey. All-cause mortality rates, however, were very similar in the screening and control groups after 10 years of follow-up (HR 1.06, 95% CI, 0.90-1.25).³⁹

It is possible that population-based screening for type 2 diabetes is associated with limited benefits at the population level. While earlier detection may have benefitted the minority diagnosed with diabetes, the proportion (2.9%) may have been too small to influence population mortality or morbidity in the ADDITION-Cambridge trial.³⁹

Furthermore, no systematic advice was given to individuals who screened negative in the ADDITION-Cambridge trial; patients were simply told that they did not have diabetes. Our results suggest that screening alone is unlikely to have a major impact on participant's health behavior (either positive or negative). Whether education at the point of screening might influence motivation to change behaviors is uncertain; further research is needed to address this question.

We found that a higher proportion of people were prescribed lipid-lowering and anti-platelet medication in the control compared with the screening group, though this may have been a chance finding given the large number of statistical tests conducted in this analysis. Our findings for self-rated health status are consistent

with those of 2 previous diabetes screening studies, which reported no difference between the screening and control groups at 12 to 15 months¹⁹ or between those who screened negative and unscreened individuals at 3 to 6 months or 12 to 15 months after screening.¹⁸

Our findings concerning the effect of diabetes screening on health-related behaviors are consistent with observational data.^{18,24} Similarly, our results on health service use are consistent with studies of screening, which have generally not found screening to affect the long-term population use of primary care services.^{5,45-47}

This is the first trial to comprehensively assess the long-term population-level effects of screening for diabetes. The cluster randomized design and the intention-to-screen approach allowed an estimation of the overall impact of screening by ensuring that a major harm or benefit was not missed.⁴⁸ Screening and control groups were well balanced for practice and patient characteristics, suggesting that we present unbiased estimates of the intervention effect. We included a large number of high-risk individuals, with power to detect small but relevant differences in long-term outcomes using reliable and validated tools. The post-test survey included random sampling, and the 61% response rate compares favorably with most health-related population surveys.⁴⁹ Response rates were similar in the screened and unscreened populations. The nested post-test design^{50,51} is a pragmatic approach that can provide a valid answer to questions about the impact of screening.

Our large sample was fairly representative of the Eastern England population, given that up to 99% of people in this region are registered with general practices. The study population, however, was almost entirely Caucasian, and ADDITION-Cambridge practices are less deprived than the average English practice. This population may have a higher self-rated health status than other English populations, as well as exhibiting a different underlying pattern of health-related behaviors. The screening procedure used in ADDITION-Cambridge differs from procedures recommended in policies of other countries, which may limit generalizability of our findings. Still, the major uncertainties surrounding screening concern not how to screen but whom to invite and whether screening and subsequent treatment result in health gains.⁵²

We did not have ethical or research governance permission to extract information from National Health Service records of individuals diagnosed with diabetes in the no-screening control group or from individuals who were clinically diagnosed with diabetes in the screening group following a negative screening test. The percentages of reported glucose lowering drugs after follow-up, however, were similar in the screening

and control groups, suggesting comparable prevalence rates of type 2 diabetes in both groups.

The loss to follow-up due to death or change of practice among high-risk individuals after the screening program may have been a source of bias. Such a possibility is limited, however, because we found no difference between baseline characteristics of patients still registered at their practice and those who had moved away. Further, there were no between-group differences in all-cause mortality over the same follow-up period. Measuring cardiovascular morbidity, self-rated health, and health behavior at baseline was not undertaken because the receipt of a questionnaire might have influenced attendance to screening. Given the apparent success of randomization, however, it is unlikely that differences between groups in outcome measures existed before screening.

Although we used previously validated instruments, there is potential for recall bias in self-reported outcomes. Generic instruments (SF-8 or EQ-5D) may not be sensitive to specific condition-related concerns raised by diabetes screening and may have low content validity in this particular context. There is, however, no screening-specific health status instrument independent of the condition of interest.

This study showed no long-term beneficial effect of screening for type 2 diabetes on self-reported cardiovascular morbidity and health-related behaviors at the population level. Negative screening tests were not associated with adoption of unhealthy behaviors (false reassurance). The results confirm the emerging position that screening for diabetes is not associated with long-term direct or indirect harms. A single round of screening may be associated with benefits among the minority whose previously undiagnosed diabetes is detected, but it appears unlikely to affect health of the population as a whole. Further research is required to evaluate the cost-effectiveness of such endeavors for population health gain.

To read or post commentaries in response to this article, see it online at <http://www.annfamned.org/content/13/2/149>.

Key words: diabetes; screening; cardiovascular morbidity; self-rated health; health behavior; ADDITION-Cambridge

Abbreviations: ADDITION (Anglo-Danish-Dutch Study of Intensive Treatment in People With Screen Detected Diabetes in Primary Care).

Submitted April 3, 2014; submitted, revised, September 13, 2014; accepted October 10, 2014.

ISRCTN86769081 (<http://www.isrctn.com>).

Funding support: ADDITION-Cambridge was supported by the Wellcome Trust (grant reference no: G061895), the Medical Research Council (grant reference no: G0001164), National Health Service R&D support

funding, the National Institute for Health Research (NIHR) and the MRC Epidemiology Unit. We received an unrestricted grant from University of Aarhus, Denmark, to support the ADDITION-Cambridge trial. Bio-Rad provided equipment to undertake capillary glucose screening by HbA_{1c} in general practice. A-L.K. was an NIHR Senior Investigator. The Primary Care Unit was supported by NIHR Research funds. S.J.G. received support from the Department of Health NIHR Program Grant funding scheme [RP-PG-0606-1259]. A.T.P. was supported by the NIHR Biomedical Research Centre based at Guy's and St Thomas' NHS Foundation Trust and King's College London. The views expressed in this publication are those of the authors and not necessarily those of the NHS, the NIHR, or the Department of Health.

Prior presentation: Part of the work described in this paper was presented at the Royal College of General Practitioners Annual Meeting in Harrogate, UK in 2010.

Acknowledgments: We gratefully acknowledge the contribution of all participants, practice nurses and general practitioners in the ADDITION-Cambridge study³⁹; a full list of participating practices is given below. We also acknowledge the contribution of the trial steering committee—Professors Nigel Stott (Chair), John Weinman, Richard Himsworth, and Paul Little. The Primary Care Unit at the University of Cambridge and the Medical Research Council Epidemiology Unit in Cambridge jointly coordinated the study. Aside from the authors, the ADDITION study team has included Amanda Adler, Rebecca Bale, Sue Boase, Ros Barling, Clare Boothby, Ryan Butler, Sean Dinneen, Pesheya Doubleday, Mark Evans, Tom Fanshawe, Francis Finucane, Julie Grant, Wendy Hardeman, Robert Henderson, Garry King, Richard Parker, Nicola Popplewell, Lincoln Sargeant, Jenny Smith, Stephen Sutton, and Fiona Whittle. We thank the following groups within the MRC Epidemiology Unit: data management (Adam Dickinson), IT (Iain Morrison), technical (Matt Simms) and field epidemiology (Paul Roberts and Kim Mwanza). We thank Stephen Sharp (MRC Epidemiology Unit) for his statistical advice. ADDITION-Cambridge practices: Acorn Community Health Centre, Arbury Road Surgery, Bridge Street Medical Centre, Buckden Surgery, Cedar House Surgery, Clarkson Surgery, Cornerstone Practice, Cornford House Surgery, Cromwell Place Surgery, Dr Smith and Partners, Eaton Socon Health Centre, George Clare Surgery, Great Staughton Surgery, Harston Surgery, Lensfield Medical Practice, Mercheford House, Milton Surgery, Northcote House Surgery, Nuffield Medical Centre, Papworth Surgery, Petersfield Medical Practice, Priors Field Surgery, Queen Edith Medical Practice, Ramsey Surgery, Riverside Practice, Roman Gate Surgery, Rosalind Franklin House, The Burwell Surgery, The Surgery Manea, The Old Exchange, The Surgery Haddenham, Trumpington Street Medical Practice, Upwell Health Centre, York Street Medical Practice.

The National Primary Care Database is a product of the National Primary Care Research and Development Centre at the University of Manchester. It was devised by Professor Deborah Baker. The database was constructed by Justin Hayes at the Regional Research Laboratory, School of Geography, University of Manchester (Director: Dr Robert Barr); SEE IT consultancy designed and built the map interface. We are grateful to Andrew Wagner, Mark Hann and David Reeves (NPCRDC) for cleaning and validating the data sets. Andrew Wagner is the database manager (a.wagner@man.ac.uk).

REFERENCES

- Vascular Programme, Department of Health. *Putting Prevention First. Vascular checks: Risk assessment and management*. London, England: Department of Health; 2008.
- American Diabetes Association. Screening for type 2 diabetes. *Diabetes Care*. 2004;27(Suppl 1):S11-S14.
- Wareham NJ, Griffin SJ. Should we screen for type 2 diabetes? Evaluation against National Screening Committee criteria. *BMJ*. 2001;322(7292):986-988.
- Bewley S. The NHS breast screening programme needs independent review. *BMJ*. 2011;343(d6843):d6894.
- Bankhead CR, Brett J, Bukach C, et al. The impact of screening on future health-promoting behaviours and health beliefs: a systematic review. *Health Technol Assess*. 2003;7(42):1-92.
- Schellhase KG, Koepsell TD, Weiss NS, Wagner EH, Reiber GE. Glucose screening and the risk of complications in Type 2 diabetes mellitus. *J Clin Epidemiol*. 2003;56(1):75-80.
- Schneider H, Ehrlich M, Lischinnski M. Did the intensive glycosuria screening of the sixties and seventies in East Germany improve the survival prognosis of early detected diabetics? *Diabetes Stoffwechsel*. 1996;5(Suppl):33-38.
- The cost-effectiveness of screening for type 2 diabetes. CDC Diabetes Cost-Effectiveness Study Group, Centers for Disease Control and Prevention. *JAMA*. 1998;280(20):1757-1763.
- Chen TH, Yen MF, Tung TH. A computer simulation model for cost-effectiveness analysis of mass screening for Type 2 diabetes mellitus. *Diabetes Res Clin Pract*. 2001;54(Suppl 1):S37-S42.
- Goyder EC, Irwig LM. Screening for Type 2 diabetes mellitus: a decision analytic approach. *Diabet Med*. 2000;17(6):469-477.
- Kahn R, Alperin P, Eddy D, et al. Age at initiation and frequency of screening to detect type 2 diabetes: a cost-effectiveness analysis. *Lancet*. 2010;375(9723):1365-1374.
- Idler EL, Benyamini Y. Self-rated health and mortality: a review of twenty-seven community studies. *J Health Soc Behav*. 1997;38(1):21-37.
- DeSalvo KB, Blosner N, Reynolds K, He J, Muntner P. Mortality prediction with a single general self-rated health question. A meta-analysis. *J Gen Intern Med*. 2006;21(3):267-275.
- Black WC, Welch HG. Screening for disease. *AJR Am J Roentgenol*. 1997;168(1):3-11.
- Edelman D, Olsen MK, Dudley TK, Harris AC, Oddone EZ. Impact of diabetes screening on quality of life. *Diabetes Care*. 2002;25(6):1022-1026.
- Adriaanse MC, Snoek FJ, Dekker JM, et al. No substantial psychological impact of the diagnosis of Type 2 diabetes following targeted population screening: The Hoorn Screening Study. *Diabet Med*. 2004;21(9):992-998.
- Adriaanse MC, Dekker JM, Spijkerman AM, et al. Health-related quality of life in the first year following diagnosis of Type 2 diabetes: newly diagnosed patients in general practice compared with screening-detected patients. The Hoorn Screening Study. *Diabet Med*. 2004;21(10):1075-1081.
- Paddison CA, Eborall HC, Sutton S, et al. Are people with negative diabetes screening tests falsely reassured? Parallel group cohort study embedded in the ADDITION (Cambridge) randomised controlled trial. *BMJ*. 2009;339:b4535.
- Eborall HC, Griffin SJ, Prevost AT, Kinmonth AL, French DP, Sutton S. Psychological impact of screening for type 2 diabetes: controlled trial and comparative study embedded in the ADDITION (Cambridge) randomised controlled trial. *BMJ*. 2007;335(7618):486.
- Stecher VJ, Kreuter MW. The psychosocial and behavioural effects of health risk appraisals. In: Croyle RT, ed. *Psychosocial Effects of Screening for Disease Prevention and Detection*. New York, NY: Oxford University Press; 1995:126-143.
- Jones A, Davies DH, Dove JR, Collinson MA, Brown PM. Identification and treatment of risk factors for coronary heart disease in general practice: a possible screening model. *Br Med J (Clin Res Ed)*. 1988;296(6638):1711-1714.
- Barlow J. Psychological consequences of hypercholesterolaemia. *Br J Gen Pract*. 1993;43(375):435-436.

23. Stewart-Brown S, Farmer A. Screening could seriously damage your health. *BMJ*. 1997;314(7080):533-534.
24. Mai KS, Sandbaek A, Borch-Johnsen K, Lauritzen T. Are lifestyle changes achieved after participation in a screening programme for Type 2 diabetes? The ADDITION Study, Denmark. *Diabet Med*. 2007;24(10):1121-1128.
25. Echouffo-Tcheugui JB, Simmons RK, Williams KM, et al. The ADDITION-Cambridge trial protocol: a cluster — randomised controlled trial of screening for type 2 diabetes and intensive treatment for screen-detected patients. *BMC Public Health*. 2009;9:136.
26. Griffin SJ, Little PS, Hales CN, Kinmonth AL, Wareham NJ. Diabetes risk score: towards earlier detection of type 2 diabetes in general practice. *Diabetes Metab Res Rev*. 2000;16(3):164-171.
27. Sargeant LA, Simmons RK, Barling RS, et al. Who attends a UK diabetes screening programme? Findings from the ADDITION-Cambridge study. *Diabet Med*. 2010;27(9):995-1003.
28. Alberti KG, Zimmet PZ. Definition, diagnosis and classification of diabetes mellitus and its complications. Part 1: diagnosis and classification of diabetes mellitus provisional report of a WHO consultation. *Diabet Med*. 1998;15(7):539-553.
29. Griffin SJ, Borch-Johnsen K, Davies MJ, et al. Effect of early intensive multifactorial therapy on 5-year cardiovascular outcomes in individuals with type 2 diabetes detected by screening (ADDITION-Europe): a cluster-randomised trial. *Lancet*. 2011;378(9786):156-167.
30. Gaede P, Vedel P, Larsen N, Jensen GV, Parving HH, Pedersen O. Multifactorial intervention and cardiovascular disease in patients with type 2 diabetes. *N Engl J Med*. 2003;348(5):383-393.
31. McIntosh A, Hutchinson A, Home PD, et al. *Clinical Guidelines and Evidence Review for Type 2 Diabetes: Management of Blood Glucose*. Sheffield, England: Sheffield University; 2001.
32. Knapp M, Beecham J. Reduced list costings: examination of an informed short cut in mental health research. *Health Econ*. 1993; 2(4):313-322.
33. Ware JE, Kosinski M, Dewey JE, Gandek B. *How to Score and Interpret Single-Item Health Status Measures: A Manual for Users of the SF-8TM Health Survey*. Lincoln, RI: QualityMetric Incorporated; 2001.
34. Kind P, Dolan P, Gudex C, Williams A. Variations in population health status: results from a United Kingdom national questionnaire survey. *BMJ*. 1998;316(7133):736-741.
35. Craig CL, Marshall AL, Sjöström M, et al. International physical activity questionnaire: 12-country reliability and validity. *Med Sci Sports Exerc*. 2003;35(8):1381-1395.
36. Bingham SA, Gill C, Welch A, et al. Validation of dietary assessment methods in the UK arm of EPIC using weighed records, and 24-hour urinary nitrogen and potassium and serum vitamin C and carotenoids as biomarkers. *Int J Epidemiol*. 1997;26(Suppl 1):S137-S151.
37. Williams K, Prevost AT, Griffin S, et al. The ProActive trial protocol - a randomised controlled trial of the efficacy of a family-based, domiciliary intervention programme to increase physical activity among individuals at high risk of diabetes [ISRCTN61323766]. *BMC Public Health*. 2004;4:48.
38. The Health and Social Care Information Centre. *Health Survey for England - 2008*. London, England: The Health and Social Care Information Centre; 2009.
39. Simmons RK, Echouffo-Tcheugui JB, Sharp SJ, et al. Screening for type 2 diabetes and population mortality over 10 years (ADDITION-Cambridge): a cluster-randomised controlled trial. *Lancet*. 2012; 380(9855):1741-1748.
40. Narayan KM, Thompson TJ, Boyle JP, et al. The use of population attributable risk to estimate the impact of prevention and early detection of type 2 diabetes on population-wide mortality risk in US males. *Health Care Manag Sci*. 1999;2(4):223-227.
41. Early identification of people with type 2 diabetes. Diabetes United Kingdom. <http://www.diabetes.org.uk>. Updated Sep 2014. Accessed Jul 2014.
42. Waugh N, Scotland G, McNamee P, et al. Screening for type 2 diabetes: literature review and economic modelling. *Health Technol Assess*. 2007;11(17):iii-iv, ix-xi, 1-125.
43. Campbell SM, Roland MO, Middleton E, Reeves D. Improvements in quality of clinical care in English general practice 1998-2003: longitudinal observational study. *BMJ*. 2005;331(7525):1121.
44. Doran T, Fullwood C, Gravelle H, et al. Pay-for-performance programs in family practices in the United Kingdom. *N Engl J Med*. 2006;355(4):375-384.
45. Thomsen JL, Parner ET, Karlsmose B, Thulstrup AM, Lauritzen T, Engberg M. Effect of preventive health screening on long-term primary health care utilization. A randomized controlled trial. *Fam Pract*. 2005;22(3):242-248.
46. The South-East London Screening Study Group. A controlled trial of multiphasic screening in middle-age: results of the South-East London Screening Study. *Int J Epidemiol*. 1977;6(4):357-363.
47. Dales LG, Friedman GD, Ramcharan S, et al. Multiphasic checkup evaluation study. 3. Outpatient clinic utilization, hospitalization, and mortality experience after seven years. *Prev Med*. 1973;2(2):221-235.
48. McCaffery KJ, Barratt AL. Assessing psychosocial/quality of life outcomes in screening: how do we do it better? *J Epidemiol Community Health*. 2004;58(12):968-970.
49. Thomas MC, Walker M, Lennon LT, et al. Non-attendance at re-examination 20 years after screening in the British Regional Heart Study. *J Public Health Med*. 2002;24(4):285-291.
50. Murray DM. *Design and Analysis of Groups-Randomized Trials*. New York, NY: Oxford University Press Inc; 1998.
51. Murray DM, Varnell SP, Blitstein JL. Design and analysis of group-randomized trials: a review of recent methodological developments. *Am J Public Health*. 2004;94(3):423-432.
52. Simmons RK, Echouffo-Tcheugui JB, Griffin SJ. Screening for type 2 diabetes: an update of the evidence. *Diabetes Obes Metab*. 2010;12(10):838-844.