

CORRECTION

Correction: The Irish Potato Famine Pathogen *Phytophthora infestans* Translocates the CRN8 Kinase into Host Plant Cells

The *PLOS Pathogens* Staff

There is an error in [Fig. 2](#). This figure contains two duplicated leaf panels. The authors have provided a corrected version of the figure here.



OPEN ACCESS

Citation: The *PLOS Pathogens* Staff (2015) Correction: The Irish Potato Famine Pathogen *Phytophthora infestans* Translocates the CRN8 Kinase into Host Plant Cells. *PLoS Pathog* 11(3): e1004753. doi:10.1371/journal.ppat.1004753

Published: March 25, 2015

Copyright: © 2015 The PLOS Pathogens Staff. This is an open access article distributed under the terms of the [Creative Commons Attribution License](#), which permits unrestricted use, distribution, and reproduction in any medium, provided the original author and source are credited.

N-terminal deletion mutants

C-terminal deletion mutants

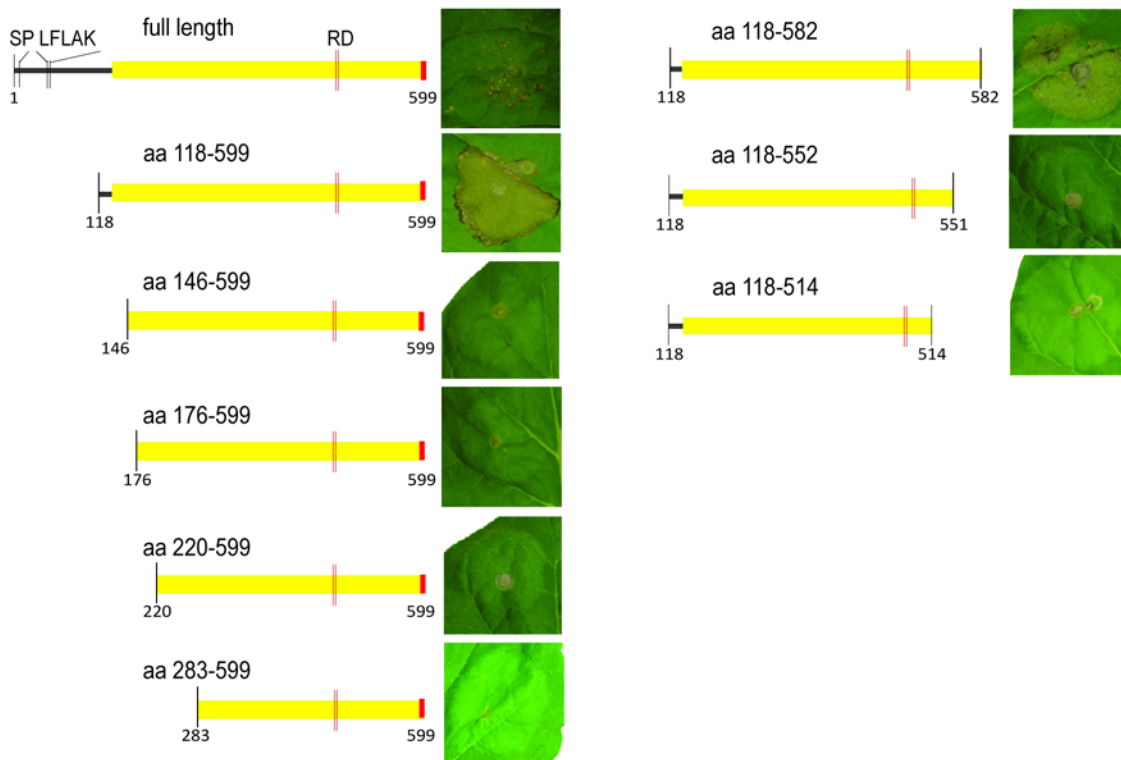


Fig 2. Defining the CRN8 cell death induction domain. *In planta* expression of various N-terminal or C-terminal deletions of CRN8, demonstrating the minimal domain necessary for cell death induction. The D2 domain is indicated in yellow, whereas the red portion indicates the position of the functional NLS.

doi:10.1371/journal.ppat.1004753.g001

Reference

1. van Damme M, Bozkurt TO, Cakir C, Schornack S, Sklenar J, Jones AME, et al. (2012) The Irish Potato Famine Pathogen *Phytophthora infestans* Translocates the CRN8 Kinase into Host Plant Cells. *PLoS Pathog* 8(8): e1002875. doi: [10.1371/journal.ppat.1002875](https://doi.org/10.1371/journal.ppat.1002875) PMID: [22927814](https://pubmed.ncbi.nlm.nih.gov/22927814/)