



Published in final edited form as:

JAMA. 2015 February 24; 313(8): 815–823. doi:10.1001/jama.2015.0894.

## Association of an inherited genetic variant with vincristine-related peripheral neuropathy in children with acute lymphoblastic leukemia

Dr. Barthelemy Diouf, PharmD, PhD, Dr. Kristine R. Crews, PharmD, Dr. Glen Lew, MD, Ms. Deqing Pei, MS, Dr. Cheng Cheng, PhD, Dr. Ju Bao, PhD, Dr. Jie J. Zheng, PhD, Dr. Wenjian Yang, PhD, Dr. Yiping Fan, PhD, Dr. Heather E. Wheeler, PhD, Ms. Claudia Wing, MS, Shannon M. Delaney, Dr. Masaaki Komatsu, MD, PhD, Dr. Steven W. Paugh, PhD, Dr. Joseph Robert McCorkle, PhD, Dr. Xiaomin Lu, PhD, Dr. Naomi J. Winick, MD, Dr. William L. Carroll, MD, Dr. Mignon L. Loh, MD, Dr. Stephen P. Hunger, MD, Dr. Meenakshi Devidas, PhD, Dr. Ching-Hon Pui, MD, Dr. M. Eileen Dolan, PhD, Dr. Mary V. Relling, PharmD, and Dr. William E. Evans, PharmD.\*

Hematological Malignancies Program, and Department of Pharmaceutical Sciences (Drs Diouf, Crews, Yang, Paugh, McCorkle, Relling and Evans), Department of Biostatistics (Ms Pei and Dr Cheng), Department of Structural Biology (Drs Bao and Zheng), Department of Computational Biology (Dr Fan), Department of Oncology (Dr Pui), St. Jude Children's Research Hospital, Memphis, Tennessee; Aflac Cancer and Blood Disorders Center (Dr Lew), Children's Healthcare of Atlanta/Emory University, Atlanta, Georgia; Section of Hematology/Oncology Department of

\*Correspondence: william.evans@stjude.org; Dr William E. Evans, St. Jude Children's Research Hospital, 262 Danny Thomas Place, Memphis, TN 38105, USA; Phone: (901) 495-6850; Fax: (901) 595-8869.

### Additional Contributions

We thank the St. Jude Hartwell Center for Bioinformatics and Biotechnology and the Flow Cytometry & Cell Sorting Shared Resource of the St. Jude Children's Research Hospital Comprehensive Cancer Center. We thank Kirsten Ness (PT, PhD) for her assistance with preparation of the online-only summary of NCI Common Toxicity Terminology for assessing neuropathy. We thank Jun Yang (PhD), Virginia Perez-Andreu (MD), Nancy Kornegay (MBA), Mark Wilkinson (BS), and Colton Smith (PhD) for their expertise and assistance in specific components of data analysis and Julie Groff (BA), Elizabeth Stevens and Joshua Stokes (BA) for preparation of Figures, and Caleb Simmons (BA) for the preparation of the manuscript.

### Statement

William E. Evans had full access to all the data in the study and takes responsibility for the integrity of the data and the accuracy of the data analysis.

### Author Contributions

**Conception and design of the study:** William E. Evans; Mary V. Relling

**Acquisition, analysis, or interpretation of data:** Barthelemy Diouf; Kristine R. Crews; Glen Lew; Deqing Pei; Cheng Cheng; Ju Bao; Jie J. Zheng; Wenjian Yang; Yiping Fan; Heather E. Wheeler; Claudia Wing; Shannon M. Delaney; Masaaki Komatsu; Steven W. Paugh; Joseph Robert McCorkle; Xiaomin Lu; Naomi J. Winick; William L. Carroll; Mignon L. Loh; Stephen P. Hunger; Meenakshi Devidas; Ching-Hon Pui; M. Eileen Dolan; Mary V. Relling and William E. Evans

**Drafting of the manuscript:** Barthelemy Diouf, Kristine Crews, Ching-Hon Pui, Cheng Cheng, William E. Evans

**Critical revision of the manuscript for important intellectual content:** Barthelemy Diouf; Kristine R. Crews; Glen Lew; Deqing Pei; Cheng Cheng; Ju Bao; Jie J. Zheng; Wenjian Yang; Yiping Fan; Heather E. Wheeler; Claudia Wing; Shannon M. Delaney; Masaaki Komatsu; Steven W. Paugh; Joseph Robert McCorkle; Xiaomin Lu; Naomi J. Winick; William L. Carroll; Mignon L. Loh; Stephen P. Hunger; Meenakshi Devidas; Ching-Hon Pui; M. Eileen Dolan; Mary V. Relling and William E. Evans

**Statistical analysis:** Deqing Pei; Cheng Cheng;

**Obtaining funding:** William E. Evans, Mary V. Relling, Stephen P. Hunger.

**Supervision:** William E. Evans

**Conflict of Interest Disclosures:** The authors declare no competing financial interests.

**Role of the Sponsors:** None of the funding sources played any role in the design and conduct of the study; collection, management, analysis and interpretation of the data; or preparation, review, or approval of the manuscript.

Medicine (Drs Wheeler, Komatsu, Dolan and Ms Wing), University of Chicago, Illinois; Department of Biostatistics (Drs Lu and Devidas), Colleges of Medicine, Public Health & Health Professions, University of Florida, Gainesville, Florida; Division of Pediatric Hematology/Oncology (Dr Winick), University of Texas Southwestern School of Medicine, Dallas, Texas; New York University Cancer Institute (Dr Carroll) New York, New York; Department of Pediatrics (Dr Loh), University of California School of Medicine, San Francisco, California; Section of Pediatric Hematology/Oncology/Bone Marrow Transplantation and Center for Cancer and Blood Disorders (Dr Hunger), University of Colorado School of Medicine, Children's Hospital Colorado, Aurora, Colorado

## Abstract

**Importance**—With cure rates of childhood acute lymphoblastic leukemia (ALL) exceeding 85%, there is compelling need to mitigate treatment toxicities that can compromise quality of life. Peripheral neuropathy is the major dose-limiting toxicity of the microtubule inhibitor vincristine, an anticancer agent given to every child with ALL.

**Objective**—Identify genetic germline variants associated with the occurrence or severity of vincristine-induced peripheral neuropathy in children with ALL.

**Design, Setting and Participants**—All patients had been enrolled in one of two prospective clinical trials for childhood ALL that included treatment with 36–39 doses of vincristine. Genome-wide single nucleotide polymorphism (SNP) analysis and vincristine-induced peripheral neuropathy were assessed in all patients from whom DNA was available (n=321 patients); 222 patients (median age at 6.0 years, range 0.1–18.8 years) enrolled between 1994–1998 on the St. Jude Children's Research Hospital protocol Total XIIIB (St. Jude cohort) with toxicity followed through January 2001, and 99 patients (median age 11.4 years, range 3.0–23.8 years) enrolled between 2007–2010 on the Children's Oncology Group protocol AALL0433 (COG cohort) with toxicity followed through May 2011. Human leukemia cells and induced pluripotent stem cell neurons were used to assess the effects of lower *CEP72* expression on vincristine sensitivity.

**Exposures**—Treatment with vincristine at a dosage of 1.5 or 2.0 mg/m<sup>2</sup> as a component of protocol directed chemotherapy for childhood ALL.

**Main Outcomes and Measures**—Vincristine-induced peripheral neuropathy was assessed at each clinic visit using the National Cancer Institute Common Terminology Criteria for Adverse Events and prospectively graded as mild (grade 1), moderate (grade 2), serious/disabling (grade 3), or life-threatening (grade 4).

**Results**—Grade 2–4 vincristine-induced neuropathy during continuation therapy occurred in 28.8% of patients (n=64 of 222) in the St. Jude cohort and in 22.2% of patients (n=22 of 99) in the COG cohort. A SNP in the promoter region of the *CEP72* gene, which encodes a centrosomal protein involved in microtubule formation, had a significant association with vincristine neuropathy (meta  $p = 6.3 \times 10^{-9}$ ). This SNP had a minor allele frequency of 37% (235/642), with 50 of 321 patients (16%, 95% CI 11.6%–19.5%) homozygous for the risk allele (TT at rs924607). Among patients with the high-risk *CEP72* genotype (TT at rs924607), 28 of 50 patients (56%, 95% CI 41.2–70.0) developed at least one episode of grade 2–4 neuropathy, a higher rate than in patients with the *CEP72* CC or CT genotype (58 of 271 patients; 21.4%, 95% CI 16.9–26.7);

$p=2.4\times 10^{-6}$ . The severity (grade) of neuropathy was greater (2.4-fold by Poisson regression ( $p<0.0001$ ), 2.7-fold based on mean grade of neuropathy (1.23 [95% CI 0.74 – 1.72] versus 0.45 [95% CI 0.3 – 0.6]; t test  $p=0.004$ )) in patients homozygous for the *CEP72* risk allele (TT genotype), compared to patients with the CC or CT genotype. The *CEP72* promoter SNP was shown to create a binding site for a transcriptional repressor causing lower mRNA expression, and reducing *CEP72* expression in human neurons and leukemia cells increased their sensitivity to vincristine.

**Conclusions**—In this preliminary study of children with ALL, an inherited polymorphism in the promoter region of *CEP72* was associated with increased risk and severity of vincristine-related peripheral neuropathy. If replicated in additional populations, this finding may provide a basis for safer dosing of this widely prescribed anticancer agent.

## Introduction

Cancer remains the leading cause of death by disease in US children, despite major advances in the last 20 years. Acute lymphoblastic leukemia (ALL) is the most common childhood cancer, and as cure rates have surpassed 85%<sup>1,2</sup>, it becomes increasingly important to mitigate acute and chronic toxicities of treatment that adversely affect quality of life and longevity. Vincristine is one of the most widely used and effective anticancer agents for treating leukemias, lymphomas, brain tumors and solid tumors in both adults and children<sup>1,2</sup> and is administered multiple times as part of treatment protocols for every child with ALL and for children with neuroblastoma, Wilm's tumor, rhabdomyosarcoma, Ewing sarcoma, and retinoblastoma<sup>3</sup>

Vincristine exerts its cytotoxic effects by interfering with microtubule formation and mitotic spindle dynamics, leading to mitotic arrest and cell death<sup>4-6</sup>. The dose-limiting toxicity of vincristine is peripheral neuropathy<sup>7,8</sup>, characterized by neuropathic pain and sensory and motor dysfunction (e.g., impaired manual dexterity, balance and deep tendon reflexes, and altered gait). A substantial percentage of patients develop neuropathy that causes considerable morbidity and often disrupts curative treatment<sup>9</sup>. Currently, there are no reliable means of identifying patients at high risk of vincristine-induced neuropathy nor strategies to mitigate this drug toxicity. Although prior studies have documented racial differences in the incidence of vincristine neuropathy, candidate gene studies have failed to identify consistent genetic variants associated with an increased risk of vincristine-induced neuropathy<sup>9-12</sup>.

To determine whether there are genetic polymorphisms associated with vincristine-induced neuropathy, we performed a genome-wide association study (GWAS) in two independent cohorts of children receiving protocol-defined treatment for acute lymphoblastic leukemia (ALL).

## Methods

### Patients and treatment regimens

Two independent patient cohorts were treated either by St. Jude Children's Research Hospital or the Children's Oncology Group (COG) according to contemporary IRB-

approved ALL protocols that prospectively assessed and graded vincristine neuropathy according to National Cancer Institute (NCI) criteria. We analyzed all consenting patients who had germline DNA available for genome-wide SNP analyses in May 2011. The first cohort included children with newly-diagnosed ALL enrolled and treated on the St. Jude Total XIIIIB protocol<sup>13–15</sup> (provided in online Supplement). The second cohort included patients with relapsed ALL enrolled on the COG AALL0433 protocol (<http://clinicaltrials.gov/show/NCT00381680>). Written informed consent was obtained from patients or their guardians and assent from patients (as appropriate).

The St. Jude Total XIIIIB protocol was divided into 3 phases: 8 weeks of remission induction therapy, 2 weeks of consolidation therapy, and 120 weeks of continuation therapy (including a re-induction phase at weeks 16–21). Vincristine was administered as a component of combination chemotherapy during the induction and continuation phases of therapy at a dosage of 1.5 mg/m<sup>2</sup> with a maximum dose of 2 mg. Altogether, St. Jude patients were scheduled to receive a total of 36 vincristine doses. Consecutive patients were enrolled between August 1994 and July 1998, and toxicity was followed through 2001.

The COG AALL0433 protocol was a cooperative group wide, Phase III randomized study of intensive therapy for patients with recurrent childhood B-precursor ALL, including late bone marrow or combined relapse (≥ 36 months from diagnosis), or early (< 18 months from diagnosis) isolated extramedullary relapse in the central nervous system or testes (<http://clinicaltrials.gov/show/NCT00381680>). COG AALL0433 treatment was divided into induction, intensification (with a re-induction phase at weeks 28–32 or 29–33) and continuation phases. Vincristine was administered as a component of combination chemotherapy during the induction, intensification, re-induction and continuation phases of therapy; a total of 39 doses of vincristine were scheduled to be given per this protocol. Patients were randomly assigned to receive a vincristine dosage of 1.5 mg/m<sup>2</sup> with a maximum dose of 2 mg (Group A) or 2 mg/m<sup>2</sup> with a maximum dose of 2.5 mg (Group B). Group B treatment and the vincristine dose randomization were permanently suspended by COG in 2010, due to the high incidence of peripheral neuropathy, most prominently in patients ≥ 13 years of age. Patients were enrolled between March 2007 and September 2010 at the time of the suspension of Group B treatment, and toxicity was followed through May 2011.

As part of required clinical trial adverse event monitoring, children in both cohorts were prospectively assessed for the presence of peripheral neuropathy via physical examination by the treating oncologist at each clinic visit during treatment<sup>16,17</sup>. Children in the St. Jude cohort were assessed for toxicity weekly throughout all phases of therapy. Children in the COG cohort were assessed for toxicity weekly throughout the first year of therapy, and monthly thereafter. For these analyses children on St. Jude Total XIIIIB were graded according to NCI Common Terminology Criteria for Adverse Events (CTCAE) version 1.0 and those in the COG cohort according to a modified “Balis” scale for neuropathy, which is a modification of the NCI CTCAE version 2.0. (eTables 1, 2). Both scales classify neuropathy events as mild (grade 1), moderate (grade 2), serious/disabling (grade 3), or life-threatening (grade 4)<sup>18</sup>. Those with Grades 2, 3 or 4 motor and/or sensory neuropathy were considered as neuropathy cases in our analyses. There were no neuropathy related deaths

(Grade 5). Follow-up for the St. Jude cohort continued through January 2001; follow-up for the COG cohort continued through May 2011.

### Genotyping

Germline DNA (500 ng) was extracted from normal peripheral blood leukocytes, digested with restriction enzymes, amplified, labeled, and hybridized to the Affymetrix GeneChip Human Mapping 500K array (532552 SNPs) or the SNP 6.0 array (906600 SNPs) (Affymetrix, Santa Clara, CA). SNPs were excluded if genotyping call rates were less than 95% and if the minor allele frequency less than 1%. (See Supplemental material for additional details). SNP imputation was carried out using Mach/1.0.15<sup>19</sup>. The total number of SNPs that were imputed was 21764463 (See supplemental material for additional details).

Race was genetically determined following a method previously described<sup>20</sup>. Briefly, the genetic ancestry estimates were determined by applying STRUCTURE (version 2.2.3) using HapMap project data as references (See Supplemental material for additional details). SNP genotype data for HapMap cell were downloaded from release 22 on the International HapMap Project website (<http://www.HapMap.org>).

### Cellular analyses

The human pre-B leukemia cell line NALM6, the human T-lineage leukemia cell line CEM and the neuroblastoma cell line SH-SY5Y were cultured in RPMI-1640 medium containing 2mM glutamine and 10% (vol/vol) FBS at 37°C with 5% CO<sub>2</sub>. iCell neurons derived from human induced pluripotent stem cells were obtained from Cellular Dynamics International (Madison, WI) and maintained per manufacturer's protocol. Primary ALL cells were isolated by applying a Ficoll-Hypaque gradient to bone marrow aspirates obtained at diagnosis (with a median of 97% blast cells). *CEP72* expression was impaired by using short hairpin RNA (shRNA). In vitro drug sensitivity of primary ALL cells and of Nalm6 and CEM cell lines was determined using the MTT (3-[4,5-dimethylthiazol-2-yl]-2,5-diphenyl-tetrazoliumbromide) assay, as previously reported<sup>21</sup>. The drug concentration lethal to 50 percent of the leukemia cells (LC<sub>50</sub>) was used as the measure of sensitivity to vincristine. Vincristine-induced neurotoxicity in iCell neurons was determined by individual cell measurements of total neurite outgrowth, number of processes and number of branches in 1000 cells for each replicate experiment. Luciferase assays to measure *CEP72* expression were performed as described in the supplemental methods. Gene expression of HapMap cells measured by the Affymetrix GeneChip Human Exon 1.0 ST Array was downloaded from the website (<http://www.ncbi.nlm.nih.gov/geo/query/acc.cgi?acc=GSE7761>).

### Statistical analysis

Analyses were conducted using R (<http://www.r-project.org/>) and SAS (SAS Institute, Cary, NC). Weighted logistic regression model fitting for recurrent events was used to test the associations between SNP genotypes and the phenotype of peripheral neuropathy (i.e., occurrence of grade 2 or higher vincristine-induced neuropathy during continuation therapy), including cumulative vincristine dosage and genetically determined ancestry as covariates, as previously described.<sup>15</sup> See supplemental materials for additional statistical details. After filtering out SNPs with a call rate <95% (SNP call rate is the percentage of

patients who have a confident genotype call for each SNP according to Affymetrix quality control criteria) and minor allele frequency <1%; the remaining SNPs (484,623 typed SNPs and 1,091,393 imputed SNPs) were assessed in a GWAS for their association with vincristine-induced neuropathy, in St. Jude and COG cohorts separately using weighted logistics regression models, then combined by pooling the p values from the two cohorts via Fisher's method. All *p*-values were computed using two-sided tests; statistical significance was determined at the genome-wide significance level  $5 \times 10^{-8}$

Post-GWAS analyses focusing on the *CEP72* SNP rs924607 were performed as follows: the relationship between the time to first episode and genotype was analyzed using cumulative incidence function estimates<sup>22</sup> and Gray's test<sup>23</sup>, Cox regression and accelerated failure time regression<sup>22</sup>, with cumulative dose and genetic ancestry as covariates. The relationship between the cumulative vincristine dosage at the first episode of toxicity and genotype was analyzed by Cox regression with genetically determined ancestry as a covariate. The relationship between severity (grade) of toxicity at the first episode and genotype was analyzed by Poisson regression model with cumulative dose and genetic ancestry as covariates. Student's *t* test was used to examine the differences in luciferase reporter activity. A linear regression model was used to test the association between vincristine sensitivity (LC<sub>50</sub>) and the SNP genotype in primary ALL cells. In post-GWAS analyses and laboratory experiments, all tests were two-sided and significance was determined at the 0.05 level.

## Results

### Patient population

Genome-wide SNP analysis and vincristine-induced neuropathy were assessed in 321 patients enrolled on two ALL treatment protocols. Of 247 consecutive patients enrolled on the St. Jude Total XIIIIB protocol, 222 patients with newly diagnosed ALL (median age at diagnosis 6.0 years, range 0.1–18.8 years) had germline DNA available for analysis and were included in this study (eFigure 1). Of the 137 patients who were enrolled in the COG AALL0433 protocol, 99 patients with relapsed ALL (median age at diagnosis 11.4 years, range 3.0–23.8 years) had germline DNA available for analysis and were included in this study (eFigure 2).

The demographic and clinical characteristics of these 321 patients are summarized in Table 1 and for each cohort in eTables 3 and 4.

### Vincristine-associated Neurotoxicity

Grade 2–4 vincristine-induced peripheral neuropathy during continuation therapy occurred in 28.8% (n=64 of 222) and 22.2% (n=22 of 99) of patients on the St. Jude and COG protocols, respectively. Genetically-determined ancestry and vincristine cumulative dosage were the demographic or clinical characteristics significantly related to the occurrence of vincristine-induced neuropathy in each of the cohorts, as summarized in eTables 3 and 4. Within the COG trial, the rate of vincristine-induced neuropathy was higher in the cohort of patients randomized to the higher dosage of vincristine (2.0 mg/m<sup>2</sup> with a maximum dose of

2.5 mg) compared to those randomized to the conventional dosage (1.5 mg/m<sup>2</sup> with a maximum dose of 2 mg); 19 of 48 patients (39.6%) vs 3 of 51 patients (5.9%)  $p < 0.0001$ , leading to early closure of the higher-dose treatment group of the COG protocol.

### Meta-analysis of genome-wide association results

Assessing SNPs that had a  $p$ -value  $< 0.05$  in both cohorts and concordant effects in both populations yielded 5,051 typed SNPs and 10,195 imputed SNPs. The Manhattan plot (eFigurea) depicts  $p$ -values of SNPs from the two patient cohorts assessed via a meta-analysis. The SNPs with the lowest  $p$ -values for their association with vincristine-induced neuropathy in the two cohorts are summarized in Table 2 and in eTable 5. In a multivariate analysis that included genetically defined ancestry and cumulative dosage of vincristine, only rs924607 remained genome-wide significantly ( $p = 4.7 \times 10^{-8}$ ) related to the development of vincristine-induced neuropathy (Table 2 and eTable 5). Rs924607 is in the promoter region of the *CEP72* gene in chromosome 5 (Figure 1).

Twenty of 32 patients (62%) with the TT genotype in the St. Jude cohort and 8 of 18 patients (44%) with the TT genotype in the COG cohort developed at least one episode of vincristine-induced neuropathy. In total, 28 out of 50 patients (56%) with the TT genotype developed at least one episode of grade 2–4 vincristine-induced neuropathy (Table 3), compared to 58 of 271 patients (21.4%) with the CC or CT genotype ( $p = 2.4 \times 10^{-6}$ ). The allelic odds ratio for the development of neuropathy for rs924607 was 2.43 (95% CI: 1.70–3.49) and 4.1 (95% CI: 1.86–9.01) in the St. Jude and COG cohorts, respectively. As summarized in eTable 6, the frequency of the *CEP72* risk allele (T) differed by ancestry, with a lower frequency in African ancestry patients and in the Hapmap cells from individuals of African ancestry (Yoruba in Ibadan, Nigeria; African ancestry in Southwest USA; Luhva in Webuye, Kenya; Maasai in Kinyama, Kenya), compared to cells from individuals of European ancestry.

Because rs924607 is an imputed SNP, we validated the genotype in a subset of 30 patients, randomly chosen from patients to represent the three diplotypes for *CEP72*. This documented complete concordance between the imputed genotypes and those obtained by direct genotyping. (eFigure 4)

### Association of *CEP72* rs924607 genotype with development, onset time, and severity of vincristine-induced peripheral neuropathy

The cumulative incidence of all neuropathy episodes (grade 2–4) differed significantly by *CEP72* rs924607 genotype (diplotypes) in both patient cohorts treated with 1.5 mg/m<sup>2</sup> of vincristine, with  $p$ -values in the St. Jude, the COG, and the combined cohorts of  $p < 0.0001$ ,  $p = 0.0087$  and  $p < 0.0001$  respectively (Gray's test; Figure 2a–c). Likewise, the cumulative incidence of severe neuropathy episodes (grades 3–4) was also significantly higher in patients homozygous for the *CEP72* risk allele (Figure 2d;  $p < 0.0001$ ). Simply based on binomial proportions, 21 of 38 (55.3% [95% CI 39.7%–69.9%]) patients with the *CEP72* TT genotype experienced grade 2–4 neuropathy over the monitoring period compared to 46 of 235 (19.6% [95% CI 14.8%–25.3%]) patients with the CC/CT genotype ( $p < 0.001$ ). The cumulative incidence of the first neuropathy episode (grade 2–4) was 60.8% (95% CI

43.9%–77.6%) among patients with the *CEP72* TT genotype compared to 23.4% (95% CI 17.4%–29.4%) among patients with the CC/CT genotype ( $p<0.001$ ). The risk of developing neuropathy was significantly higher in patients with the *CEP72* TT genotype (TT vs. CT/CC hazard ratio of 3.58, 95% CI 2.1, 6.1 for TT compared to the CT/CC patients) in a Cox regression model adjusting for cumulative vincristine dosage and genetically determined ancestry (eTable 7). This *CEP72* SNP was not significantly associated with the incidence of vincristine-induced neuropathy among patients randomized to treatment with the higher (experimental) dosage of vincristine (eFigure 5).

By fitting an accelerated failure time model<sup>22</sup> with *CEP72* genotype, cumulative vincristine dosage and genetically-determined ancestry as explanatory variables, the estimated ratio of median time to the first episode of neuropathy in TT patients compared to patients with a CT or CC genotype was approximately 20% shorter in TT patients within any race and at any cumulative vincristine dosage level ( $p$ -value =  $6.19 \times 10^{-6}$  for the regression coefficient of the SNP) (eTable 8). Without adjusting for covariates, among those who developed grade 2–4 neuropathy, the average time to develop neuropathy was 225 days (95% CI: 169–281 days) in patients with the *CEP72* genotype TT compared to 307 days in patients with the CT/CC genotype (95% CI: 244–370 days).

In unadjusted analysis comparing the average grade of neuropathy observed at the first episode (assigning grade 0 to those who did not develop neuropathy) in patients treated with 1.5 mg/m<sup>2</sup> vincristine, the mean grade of neuropathy in white patients with the *CEP72* high-risk genotype (TT) was significantly higher (2.7-fold) than the mean grade of neuropathy in patients with the *CEP72* CC or CT genotypes (1.23 [95% CI 0.74 – 1.72] versus 0.45 [95% CI 0.3 – 0.6];  $t$  test  $p=0.004$ ). The numbers of patients in other ancestry groups were too small to make meaningful subgroup comparisons. Using the Poisson regression model to assess the severity (grade) of neuropathy at first episode, with genetically defined ancestry and cumulative vincristine dosage as covariates in the combined cohort, the average grade (by CTCAE) of neuropathy was 2.4-fold greater (95% CI 1.59–3.69) in patients homozygous for the *CEP72* risk allele (TT) compared to all other patients ( $p<0.0001$ ; eTable 9).

### **Rs924607 and *CEP72* mRNA expression**

Because rs924607 is located in the promoter region of *CEP72*, we examined *CEP72* mRNA expression levels for association with rs924607 genotype in Hapmap samples (CEU), using the publicly available gene expression data set<sup>24</sup>. Patients who were homozygous for the variant T-allele had significantly lower expression of *CEP72* mRNA compared to those who were heterozygous or homozygous for the wild-type C-allele ( $p=0.025$ , eFigure 6a). The effect of rs924607 genotype on *CEP72* expression was confirmed using a luciferase reporter assay in two different human cell lines, documenting significantly lower expression with the T-allele compared to the C-allele in both SH-SY5Y neuroblastoma cells (eFigure 6b) and in Nalm6 leukemia cells (eFigure 6c). The rs924607 T variant creates a consensus binding site for the NKX-6.3 transcription factor (repressor) (eFigures 6d and 6e, eTable 10; eFigure 6f, 6g, 6h), markedly enhancing NKX-6.3 binding to the risk allele, leading to lower *CEP72* mRNA expression.



### Low *CEP72* expression and vincristine-induced toxicity

The relationship between *CEP72* expression and vincristine-induced neurotoxicity was assessed in neurons derived from human induced pluripotent stem cells (iPSC), revealing significantly greater sensitivity to vincristine when *CEP72* expression was reduced (eFigure 7a, 7b).

Likewise, reducing expression of *CEP72* in two human ALL cells lines, Nalm6 (B-lineage) (eFigure 7c) and CEM (T-lineage) (eFigure 7e), was associated with increased sensitivity to vincristine (eFigure 7d, 7f). Moreover, primary leukemia cells from newly diagnosed patients who were homozygous for the *CEP72* risk allele (TT) (mean LC<sub>50</sub> = 0.9 μM, 95% CI -0.5 – 2.3 μM) were more sensitive to vincristine when compared to patients with either the CT (mean LC<sub>50</sub> = 2.6 μM, 95% CI 0.6 – 4.7 μM) or CC (mean LC<sub>50</sub> = 11.9 μM, 95% CI 3.0 – 20.7 μM) *CEP72* genotype ( $p=0.016$ , eFigure 7g).

### Discussion

We found that an inherited variant in the promoter region of the *CEP72* gene was associated with a higher incidence and severity of vincristine-related peripheral neuropathy in children with ALL, with the cumulative incidence of neuropathy significantly higher and the average grade of neuropathy significantly greater in patients homozygous for the *CEP72* risk allele (TT) compared to all other patients. The *CEP72* gene encodes a centrosomal protein that is essential for microtubule formation, and vincristine exerts its pharmacologic effects by inhibiting microtubule formation. We found that the *CEP72* variant associated with vincristine neuropathy (T allele at rs924607) creates a binding site for a transcriptional repressor, leading to lower *CEP72* mRNA expression, and we showed that reducing the expression of *CEP72* in human iPSC neurons or leukemia cells increased their sensitivity to vincristine. Because vincristine-induced toxicities can be influenced by cumulative dosage of vincristine and differ by race, we included both cumulative dosage and ancestry as covariates in our analyses, revealing that the *CEP72* rs924607SNP was the only SNP reaching genome-wide significance ( $<5 \times 10^{-8}$ ) in its association with vincristine-induced neuropathy. The frequency of the risk allele (T) was lower in African-American patients compared to the other racial groups, consistent with its lower frequency in African ancestry samples in the Hapmap collection. This finding is also consistent with the reported lower incidence of vincristine-induced neuropathy in black patients<sup>25</sup>. We found that children who inherited two copies of the *CEP72* risk allele (homozygous for T at rs924607) had a significantly higher incidence of vincristine-induced peripheral neuropathy (60.8% [95% CI 43.9%–77.6% in TT patients compared to 23.4% [95% CI 17.4%–29.4] in CC/CT patients). We also found that *CEP72* TT patients had increased severity (grade) of toxicity at first episode (2.4 fold higher grade of neuropathy; 95% CI 1.6–3.7 for TT compared to CT/CC patients) at any given cumulative dosage of vincristine.

Vincristine is widely used to treat leukemia, lymphoma, various solid tumors and brain tumors in children and adults<sup>26</sup>. Vincristine-induced peripheral neuropathy, characterized by sensory and motor dysfunction, causes extensive morbidity and often disrupts treatment. In children with ALL, the reported incidence of vincristine-induced neuropathy differs across treatment protocols, due in part to the grade of toxicity considered<sup>27,28</sup>, the VCR dosage and

number of doses given<sup>29</sup>, and the types of symptoms captured<sup>9</sup>. In the current study, patients received uniform treatment according to prospective clinical trials, with neuropathy assessed by NCI criteria to prospectively identify all patients who developed grades 2–4 neuropathy during continuation therapy with vincristine. Although a genetic component of vincristine-induced neuropathy would be consistent with previously reported racial differences in the incidence of vincristine-induced neuropathy<sup>25</sup>, previous candidate gene studies have not yielded reproducible findings. We therefore took an agnostic genome-wide approach to identify genetic variants influencing vincristine-induced peripheral neuropathy, revealing the previously unrecognized association with *CEP72* genotype.

The current study has limitations, including the small sample size (n=321), the small number of patients homozygous for the *CEP72* risk allele (~16% of patients, n=50), and our assessment of only children in the context of ALL chemotherapy. However, our clinical findings are corroborated by multiple lines of laboratory evidence in human iPSC neurons and leukemia cells, and if verified in additional patient populations, could lead to a new approach for identifying patients at high-risk of vincristine-related neuropathy. Because our data suggest that the leukemia cells of patients who are homozygous for the *CEP72* risk allele are more sensitive to vincristine, it may be possible to treat these patients with a lower dosage of vincristine to decrease the risk or severity of neuropathy without compromising the antileukemic effects of vincristine, a possibility that merits assessment in future clinical trials.

## Conclusion

In this preliminary study of children with ALL, an inherited polymorphism in the promoter region of *CEP72* was associated with increased risk and severity of vincristine-related peripheral neuropathy. If replicated in additional populations, this finding may provide a basis for safer dosing of this widely prescribed anticancer agent.

## Supplementary Material

Refer to Web version on PubMed Central for supplementary material.

## Acknowledgments

### Funding/Support

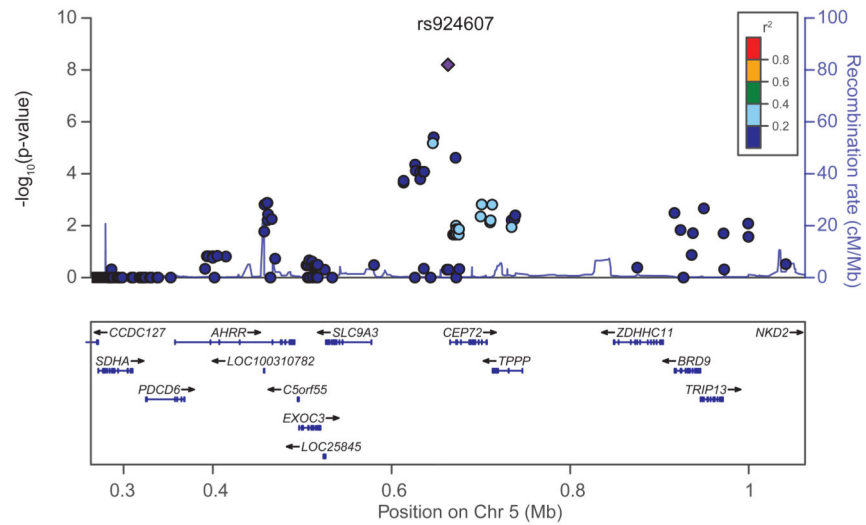
The study was supported in part by NIH Grants No. R37 CA36401 (W.E.E. and M.V.R.), U01 GM92666 (M.V.R., D.P., C.C., W.Y., S.P., M.L.L., M.D. and W.E.E.), UO1 GM61393 (M.E.D.), R01 CA136765 (M.E.D.) F32 CA165823 (H.E.W.), Comprehensive Cancer Center grant CA21765, U10 CA98543 (COG Chair's grant), U10 CA98413 (COG Statistical Center), and U24 CA114766 (COG Specimen Banking) from the National Cancer Institute, and by the American Lebanese Syrian Associated Charities.

## References

1. Pui CH, Evans WE. Acute lymphoblastic leukemia. *The New England journal of medicine*. 1998; 339(9):605–615. [PubMed: 9718381]
2. Pui CH, Evans WE. Treatment of acute lymphoblastic leukemia. *The New England journal of medicine*. 2006; 354(2):166–178. [PubMed: 16407512]

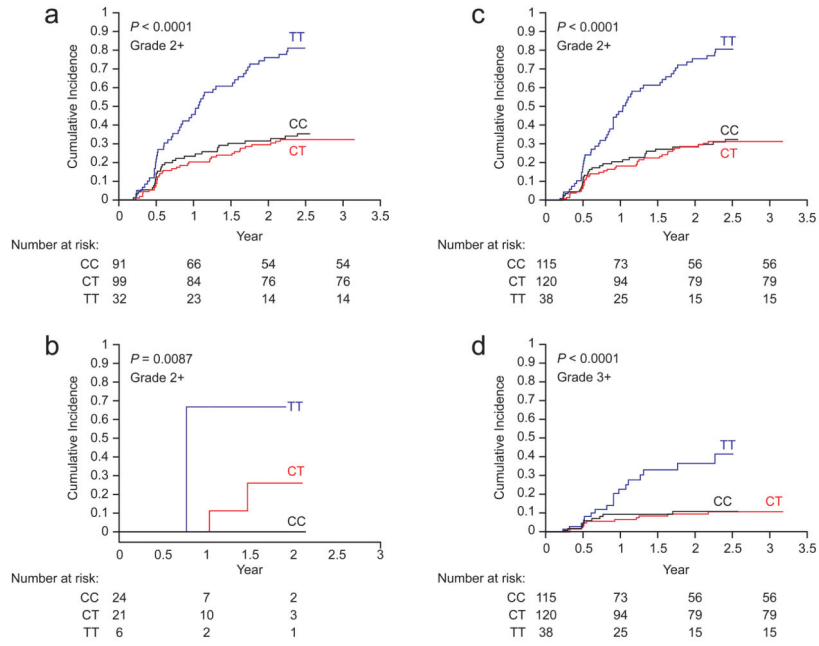
3. Pizzo, PA.; Poplack, DG. Principles and Practice of Pediatric Oncology. 6. Wolters Kluwer/ Lippincott Williams&Wilkins; 2011.
4. Jordan MA, Toso RJ, Thrower D, Wilson L. Mechanism of mitotic block and inhibition of cell proliferation by taxol at low concentrations. Proceedings of the National Academy of Sciences of the United States of America. 1993; 90(20):9552–9556. [PubMed: 8105478]
5. Jordan MA, Wilson L. Microtubules as a target for anticancer drugs. Nature reviews Cancer. 2004; 4(4):253–265.
6. Toh HC, Sun L, Koh CH, Aw SE. Vinorelbine induces apoptosis and caspase-3 (CPP32) expression in leukemia and lymphoma cells: a comparison with vincristine. Leukemia & lymphoma. 1998; 31(1–2):195–208. [PubMed: 9720729]
7. Bradley WG, Lassman LP, Pearce GW, Walton JN. The neuromyopathy of vincristine in man. Clinical, electrophysiological and pathological studies. Journal of the neurological sciences. 1970; 10(2):107–131. [PubMed: 4314181]
8. Gidding CE, Meeuwse-de Boer GJ, Koopmans P, Uges DR, Kamps WA, de Graaf SS. Vincristine pharmacokinetics after repetitive dosing in children. Cancer chemotherapy and pharmacology. 1999; 44(3):203–209. [PubMed: 10453721]
9. Egbelakin A, Ferguson MJ, MacGill EA, et al. Increased risk of vincristine neurotoxicity associated with low CYP3A5 expression genotype in children with acute lymphoblastic leukemia. Pediatric blood & cancer. 2011; 56(3):361–367. [PubMed: 21225912]
10. Aplenc R, Glatfelter W, Han P, et al. CYP3A genotypes and treatment response in paediatric acute lymphoblastic leukaemia. British journal of haematology. 2003; 122(2):240–244. [PubMed: 12846892]
11. Ross CJ, Visscher H, Rassekh SR, et al. Pharmacogenomics of serious adverse drug reactions in pediatric oncology. Journal of population therapeutics and clinical pharmacology = Journal de la therapeutique des populations et de la pharamcologie clinique. 2011; 18:e134–151.
12. Plassehaert SL, Groninger E, Boezen M, et al. Influence of functional polymorphisms of the MDR1 gene on vincristine pharmacokinetics in childhood acute lymphoblastic leukemia. Clinical pharmacology and therapeutics. 2004; 76(3):220–229. [PubMed: 15371983]
13. Pui CH, Sandlund JT, Pei D, et al. Improved outcome for children with acute lymphoblastic leukemia: results of Total Therapy Study XIIIB at St Jude Children’s Research Hospital. Blood. 2004; 104(9):2690–2696. [PubMed: 15251979]
14. Pui CH, Campana D, Pei D, et al. Treating childhood acute lymphoblastic leukemia without cranial irradiation. The New England journal of medicine. 2009; 360(26):2730–2741. [PubMed: 19553647]
15. Kishi S, Cheng C, French D, et al. Ancestry and pharmacogenetics of antileukemic drug toxicity. Blood. 2007; 109(10):4151–4157. [PubMed: 17264302]
16. Trotti A, Colevas AD, Setser A, et al. CTCAE v3.0: development of a comprehensive grading system for the adverse effects of cancer treatment. Semin Radiat Oncol. 2003; 13(3):176–181. [PubMed: 12903007]
17. Hudson MM, Ness KK, Gurney JG, et al. Clinical ascertainment of health outcomes among adults treated for childhood cancer. JAMA. 2013; 309(22):2371–2381. [PubMed: 23757085]
18. Cancer Therapy Evaluation Program (CTEP). [Accessed November 21, 2014] National Cancer Institute website. <http://dctd.cancer.gov/ProgramPages/CTEP/>
19. Li Y, Willer CJ, Ding J, Scheet P, Abecasis GR. MaCH: using sequence and genotype data to estimate haplotypes and unobserved genotypes. Genetic epidemiology. 2010; 34(8):816–834. [PubMed: 21058334]
20. Yang JJ, Cheng C, Devidas M, et al. Ancestry and pharmacogenomics of relapse in acute lymphoblastic leukemia. Nature genetics. 2011; 43(3):237–241. [PubMed: 21297632]
21. Holleman A, Cheok MH, den Boer ML, et al. Gene-expression patterns in drug-resistant acute lymphoblastic leukemia cells and response to treatment. N Engl J Med. 2004; 351(6):533–542. [PubMed: 15295046]
22. Kalbfleisch, JD.; Prentice, R. The Statistical Analysis of Failure Time Data. 2. Vol. Chapter 7. Wiley & Sons Inc; New York: 2002.

23. Gray RJ. A class of K-sample tests for comparing the cumulative incidence of a competing risk. *Ann Statist.* 1988; 16:1141–1154.
24. Huang RS, Duan S, Shukla SJ, et al. Identification of genetic variants contributing to cisplatin-induced cytotoxicity by use of a genomewide approach. *American journal of human genetics.* 2007; 81(3):427–437. [PubMed: 17701890]
25. Renbarger JL, McCammack KC, Rouse CE, Hall SD. Effect of race on vincristine-associated neurotoxicity in pediatric acute lymphoblastic leukemia patients. *Pediatric blood & cancer.* 2008; 50(4):769–771. [PubMed: 18085684]
26. Rowinsky EK, Donehower RC. The clinical pharmacology and use of antimicrotubule agents in cancer chemotherapeutics. *Pharmacology & therapeutics.* 1991; 52(1):35–84. [PubMed: 1687171]
27. Aytac S, Yetgin S, Tavit B. Acute and long-term neurologic complications in children with acute lymphoblastic leukemia. *The Turkish journal of pediatrics.* 2006; 48(1):1–7. [PubMed: 16562778]
28. Crom WR, de Graaf SS, Synold T, et al. Pharmacokinetics of vincristine in children and adolescents with acute lymphocytic leukemia. *The Journal of pediatrics.* 1994; 125(4):642–649. [PubMed: 7931891]
29. Pal PK. Clinical and electrophysiological studies in vincristine induced neuropathy. *Electromyography and clinical neurophysiology.* 1999; 39(6):323–330. [PubMed: 10499201]



**Figure 1.**

Regional association plot for the rs924607 locus on chromosome 5 (blue diamond). Each SNP is plotted with respect to its chromosomal location (x axis) and the corresponding meta  $P$  value for association with vincristine neuropathy (left y axis). The blue line depicts the recombination rate (right y axis) at the corresponding region of chromosome 5 (x axis). SNPs are colored to indicate extent of LD with the indexed SNP (pairwise  $r^2$  values from HapMap CEU). The NCBI Build 37 corresponding to the 1000 Genomes Project March 2012 reference was used.



**Figure 2.** Cumulative incidence of vincristine-induced neuropathy among patients with different *CEP72* genotypes. The cumulative incidence of vincristine-induced neuropathy (grades 2–4) differed by *CEP72* promoter SNP (rs924607) genotype in the St Jude cohort (a) ( $p < 0.0001$ ), the COG cohort group A (b) ( $p = 0.0087$ ) and in the combined St Jude and COG group A cohort (c) ( $p < 0.0001$ ). Likewise, the cumulative incidence of severe neuropathy (grades 3–4) was also significantly higher in patients homozygous for the *CEP72* risk allele (d). P values were computed based on weighted logistic regression adjusting for ancestry and accounting for multiple episodes of neuropathy. The number of patients valuable and at risk of neuropathy is provided for each *CEP72* genotype (diplotype). The x-axis represents time since the start of continuation therapy for ALL.

Characteristics of patients in the combined cohort of St. Jude and COG patients assessed for vincristine neuropathy.

Table 1

Characteristics <sup>a</sup>	Vincristine Neuropathy					P value <sup>d</sup>
	Total Patients (n=321) <sup>b</sup>	None to Grade 1	1 episode of Grade 2–4	2 or more episodes of Grade 2–4	Episodes of Grade 2–4 <sup>c</sup>	
<b>Age at diagnosis, y</b>						
<1	8 (2.5)	7	1	0	1	0.03
1–10	192 (59.8)	137	34	21	103	
>10	121 (37.7)	91	16	14	84	
<b>Sex</b>						
Male	187 (58.3)	142	29	16	88	0.02
Female	134 (41.7)	93	22	19	100	
<b>Genetically-determined Ancestry</b>						
European	209 (65.1)	156	29	24	123	0.002
African	43 (13.4)	33	8	2	15	
Asian	2 (0.6)	1	1	0	1	
Hispanic	44 (13.7)	30	7	7	36	
Other	23 (7.2)	15	6	2	13	
<b>Cumulative vincristine dosage (mg/m<sup>2</sup>), median [range]</b>	47 [2–120]	46 [2–120]	51 [8–92]	49 [10–120]	52 [22–120]	0.28

<sup>a</sup>Data are presented as Number (%) of patients unless otherwise indicated.

<sup>b</sup>Cohort includes patients treated on St. Jude Total XIIIIB (n=222) and on COG AALL0433 (n=99).

<sup>c</sup>Number of events.

<sup>d</sup>p values are from univariate weighted logistic regression using each episode as an observation.

SNPs associated with the incidence of vincristine-induced neuropathy (Grades 2–4).<sup>a</sup>

Table 2

SNP	Chr	Position	Nearest gene	Allele major/minor	St Jude Total XIIB			COG AALL0433			Meta-analysis (univariate)		Meta-analysis <sup>c</sup> (multivariate)	
					MAF (%)	OR	95% CI	P-value	MAF (%)	OR	95% CI	P-value	P-value	P-value
rs924607 <sup>b</sup>	5	663093	CEP72	C/T	36.7	2.43	1.70–3.49	1.25×10 <sup>-6</sup>	36.4	4.1	1.86–9.01	0.0004	6.33×10 <sup>-9</sup>	4.68×10 <sup>-8</sup>
rs17032980	2	67156247	ETAA1	A/G	26.6	3.17	1.95–5.17	3.67×10 <sup>-6</sup>	19.2	10.4	2.97–36.15	0.0002	9.77×10 <sup>-9</sup>	9.01×10 <sup>-7</sup>
rs12786200	11	91618666	MTNR1B	C/T	22.7	0.23	0.13–0.40	1.58×10 <sup>-7</sup>	20.7	0.24	0.08–0.76	0.02	2.56×10 <sup>-8</sup>	6.30×10 <sup>-7</sup>
rs4463516 <sup>b</sup>	9	32857481	TMEM215	C/G	33.6	2.89	1.90–4.39	6.83×10 <sup>-7</sup>	24.2	4.94	1.65–14.79	0.004	3.02×10 <sup>-8</sup>	1.19×10 <sup>-7</sup>
rs7818688 <sup>b</sup>	8	96093258	NDUFAF6	C/A	12.6	4.26	2.45–7.42	3.05×10 <sup>-7</sup>	14.1	4.59	1.35–15.59	0.01	4.46×10 <sup>-8</sup>	5.03×10 <sup>-7</sup>

MAF = minor allele frequency, OR = odds ratio, CI = confidence interval of OR, Chr = chromosome

<sup>a</sup>SNPs were selected based on their univariate meta-analysis p-values and the SNPs with the lowest p-values are shown. These SNPs had the lowest p-values among the 5051 typed SNPs and 10195 imputed SNPs with a p-value <0.05 in each cohort separately and with concordant direction (effect) in the two cohorts. When there were multiple SNPs in LD only the one with the lowest p-value is represented

<sup>b</sup> imputed SNP

<sup>c</sup> including genetically defined ancestry and cumulative VCR dosage as covariates



**Table 3**  
**Vincristine-induced peripheral neuropathy and rs924607 genotype**

The number of patients (n) for each rs924607 genotype and at each grade of vincristine-induced neuropathy are presented for the St. Jude Total XIIIIB cohort (a), for the COG AALL0433 cohort (b), and for the combined cohort (c). Patients who experienced more than one episode of neuropathy at different grades were included at the highest grade reported.

<b>a. St. Jude Total XIIIIB</b>							
Patients	Grade 0 (n)	Grade 1 (n)	Grade 2 (n)	Grade 3 (n)	Grade 4 (n)	Total (n)	% with Grade 2–4 Vincristine Neuropathy
CC genotype	65	0	17	8	1	91	28.6
CT genotype	81	0	9	9	0	99	18.2
TT genotype	12	0	13	7	0	32	62.5
<b>Total</b>	<b>158</b>	<b>0</b>	<b>39</b>	<b>24</b>	<b>1</b>	<b>222</b>	
<b>b. COG AALL0433</b>							
Patients	Grade 0 (n)	Grade 1 (n)	Grade 2 (n)	Grade 3 (n)	Grade 4 (n)	Total (n)	% with Grade 2–4 Vincristine Neuropathy
CC genotype	37	1	4	3	0	45	15.6
CT genotype	28	1	4	3	0	36	19.4
TT genotype	9	1	3	5	0	18	44.4
<b>Total</b>	<b>74</b>	<b>3</b>	<b>11</b>	<b>11</b>	<b>0</b>	<b>99</b>	
<b>c. Combined cohort of St. Jude Total XIIIIB and COG AALL0433</b>							
Patients	Grade 0 (n)	Grade 1 (n)	Grade 2 (n)	Grade 3 (n)	Grade 4 (n)	Total (n)	% with Grade 2–4 Vincristine Neuropathy
CC genotype	102	1	21	11	1	136	24.3
CT genotype	109	1	13	12	0	135	18.5
TT genotype	21	1	16	12	0	50	56.0
<b>Total</b>	<b>232</b>	<b>3</b>	<b>50</b>	<b>35</b>	<b>1</b>	<b>321</b>	