

## Endoscopic ultrasound in the evaluation of pancreatic neoplasms-solid and cystic: A review

Eric M Nelsen, Darya Buehler, Anurag V Soni, Deepak V Gopal

Eric M Nelsen, Anurag V Soni, Deepak V Gopal, Division of Gastroenterology and Hepatology, University of Wisconsin - School of Medicine and Public Health, Madison, WI 53705, United States

Darya Buehler, Department of Pathology and Laboratory Medicine, University of Wisconsin - School of Medicine and Public Health, Madison, WI 53705, United States

**Author contributions:** Nelsen EM contributed to drafting of manuscript, review of literature and review of final manuscript; Buehler D contributed to drafting of manuscript, preparation and review of pathology; Soni AV contributed to drafting of manuscript and review of final manuscript; Gopal DV contributed to coordinator of manuscript, drafting of manuscript and approval of final manuscript.

**Conflict-of-interest:** Authors have no conflicts of interest.

**Open-Access:** This article is an open-access article which was selected by an in-house editor and fully peer-reviewed by external reviewers. It is distributed in accordance with the Creative Commons Attribution Non Commercial (CC BY-NC 4.0) license, which permits others to distribute, remix, adapt, build upon this work non-commercially, and license their derivative works on different terms, provided the original work is properly cited and the use is non-commercial. See: <http://creativecommons.org/licenses/by-nc/4.0/>

**Correspondence to:** Deepak V Gopal, MD, FRCP(C), AGAF, FACP, FASGE, Professor of Medicine, Division of Gastroenterology and Hepatology, University of Wisconsin - School of Medicine and Public Health, 1685 Highland Avenue, Madison, WI 53705, United States. [dvg@medicine.wisc.edu](mailto:dvg@medicine.wisc.edu)  
Telephone: +1-608-2637322

Received: September 13, 2014

Peer-review started: September 13, 2014

First decision: September 28, 2014

Revised: October 31, 2014

Accepted: January 18, 2015

Article in press: January 20, 2015

Published online: April 16, 2015

### Abstract

Pancreatic neoplasms have a wide range of pathology, from pancreatic adenocarcinoma to cystic mucinous neoplasms. Endoscopic ultrasound (EUS) with or without

fine needle aspiration (FNA) is a helpful diagnostic tool in the work-up of pancreatic neoplasms. Its utility in pancreatic malignancy is well known. Over the last two decades EUS-FNA has become a procedure of choice for diagnosis of pancreatic adenocarcinoma. EUS-FNA is highly sensitive and specific for solid lesions, with sensitivities as high as 80%-95% for pancreatic masses and specificity as high as 75%-100%. Multiple aspects of the procedure have been studied to optimize the rate of diagnosis with EUS-FNA including cytopathologist involvement, needle size, suctioning and experience of endoscopist. Onsite pathology is one of the most important elements in increasing diagnostic yield rate in EUS-FNA. EUS-FNA is valuable in diagnosing rare and atypical pancreatic neoplasms including neuroendocrine, lymphoma and metastatic disease. As more and more patients undergo cross sectional imaging, cystic lesions of the pancreas are becoming a more common occurrence and EUS-FNA of these lesions can be helpful for differentiation. This review covers the technical aspects of optimizing pancreatic neoplasm diagnosis rate, highlight rare pancreatic neoplasms and role of EUS-FNA, and also outline the important factors in diagnosis of cystic lesions by EUS-FNA.

**Key words:** Endoscopic ultrasound-fine needle aspiration; Pancreatic neoplasms; Pancreatic cysts; Review; Pancreatic adenocarcinoma

© **The Author(s) 2015.** Published by Baishideng Publishing Group Inc. All rights reserved.

**Core tip:** Endoscopic ultrasound-fine needle aspiration (EUS-FNA) is a common, reliable way of obtaining tissue from within the abdominal cavity. This review details the current evidence of optimizing EUS-FNA results for pancreatic lesions, specifically adenocarcinoma. EUS and cytology from rare pancreatic lesions are highlighted to demonstrate the wide variety of pancreatic lesions and the importance of cytopathology. Also covered are cystic lesions and the ability of EUS-FNA to differentiate cysts based on EUS appearance and aspiration analysis

including new DNA analysis and measurement of k-ras mutation.

Nelsen EM, Buehler D, Soni AV, Gopal DV. Endoscopic ultrasound in the evaluation of pancreatic neoplasms-solid and cystic: A review. *World J Gastrointest Endosc* 2015; 7(4): 318-327 Available from: URL: <http://www.wjgnet.com/1948-5190/full/v7/i4/318.htm> DOI: <http://dx.doi.org/10.4253/wjge.v7.i4.318>

## INTRODUCTION

Pancreatic neoplasms have a wide range of pathology, from pancreatic adenocarcinoma to cystic mucinous neoplasms. Endoscopic ultrasound (EUS) with or without fine needle aspiration (FNA) is a helpful diagnostic tool in the work-up of pancreatic neoplasms. Its utility in pancreatic malignancy is well known. Over the last two decades it has become the procedure of choice for tissue diagnosis and staging of pancreatic adenocarcinoma. In this review the utility of EUS in the diagnosis of pancreatic adenocarcinoma and technical aspects of the procedure that can increase rates of pathology diagnosis will be discussed. Examples of rare and atypical lesions and the role of EUS-FNA will be highlighted. Also reviewed are the advances in differentiation and diagnosis of pancreatic cysts, including new tests (DNA analysis, k-ras measurement) that may play a role in the future discriminating cystic lesions. The current evidence, limitations, and complications of EUS-FNA in the evaluation of both solid and cystic pancreatic neoplasms will be reviewed.

## PANCREATIC ADENOCARCINOMA

Pancreatic adenocarcinoma remains a rising and leading cause of cancer death in the United States. The five year survival is less than 5%<sup>[1,2]</sup>, which stems from the fact that more than 80% of pancreatic adenocarcinomas present as advanced disease at time of diagnosis<sup>[2]</sup>. Often the diagnosis and stage can be clearly established with cross sectional imaging and patients can be taken for definitive surgical management. However, when there is lack of clarity in the diagnosis or stage of the disease, EUS-FNA can play an important role. Additionally, it is useful when neoadjuvant therapy is planning to be used and tissue diagnosis is needed. EUS alone is a valuable tool for staging pancreatic lesions. Figure 1 demonstrates an endoscopic ultrasound image (Figure 1A) and typical cytology of a pancreatic adenocarcinoma (Figure 1B and C). EUS has been shown to be superior to other imaging [computed tomography (CT) or abdominal US] in pancreatic tumor detection, specifically in tumors < 3 cm<sup>[3]</sup>. Earlier studies showed that EUS may be superior to CT in staging and determining surgical resectability. However with the advances in

CT imaging, whether EUS still holds advantage in this setting appears to be less clear<sup>[4]</sup>. It is likely that these two modalities are complimentary in the staging of pancreatic adenocarcinoma.

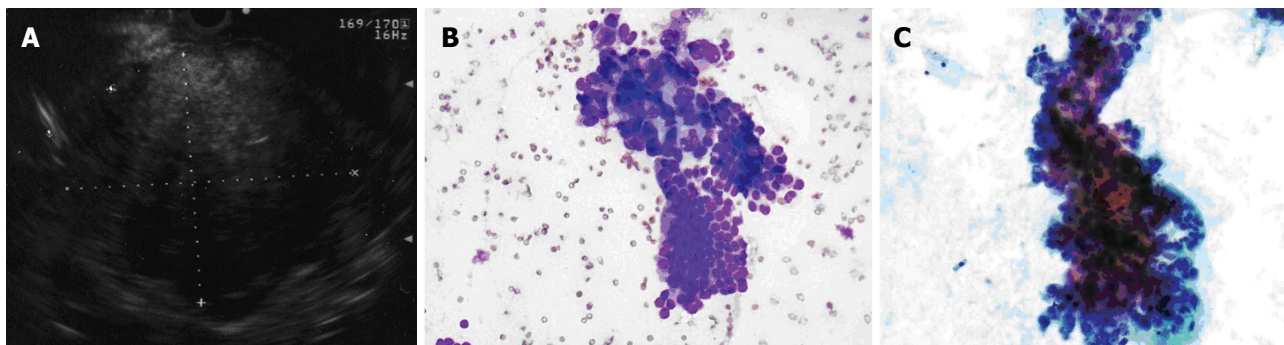
EUS-FNA was first described in the early 1990's and since then it has become the standard of care in diagnosis of pancreatic masses<sup>[5]</sup>. Much of the data regarding EUS-FNA is in regards to diagnosing pancreatic adenocarcinoma. EUS-FNA is highly sensitive and specific for solid lesions, with sensitivities as high as 80%-95% for pancreatic masses and specificity as high as 75%-100%<sup>[6-8]</sup>. More recently a meta-analysis of 41 studies of EUS-FNA found a pooled sensitivity of 87%<sup>[9]</sup>; additionally, a recent systemic review of ten high-quality studies showed a pooled sensitivity and specificity of 94% and 95%, respectively<sup>[10]</sup>. When compared to CT-guided biopsy and endoscopic retrograde cholangiopancreatography (ERCP) with brush cytology, EUS-FNA has a distinct advantage. ERCP brush cytology sensitivity is quite low ranging from 30% to 85%<sup>[11]</sup>. CT-guided biopsy is a more invasive procedure than EUS-FNA and has a lower diagnostic yield. CT guided biopsy also carries the risk of peritoneal seeding, with one retrospective study showing rates as high as 16.3% compared to 2.2% with EUS-FNA<sup>[12]</sup>. Currently more centers are performing EUS-FNA so there may be a wide range of diagnostic yield in pancreatic masses, but the general trend over the last 10 years is towards higher sensitivity and specificity for pancreatic masses<sup>[9]</sup>.

## OPTIMIZING EUS-FNA OF PANCREATIC MASSES

Much of the research in EUS-FNA has focused on optimizing diagnostic yield for pancreatic masses. Multiple aspects of the procedure have been studied including cytopathologist involvement, needle size, providing suctioning and experience of endoscopist. The current data regarding optimization of EUS-FNA results will be reviewed below.

Studies have shown that the total number of EUS-FNA performed within a facility have been linked to higher diagnostic yield. Additionally, the availability of rapid on-site cytopathology evaluation (ROSE) evaluation also significantly increased diagnostic yield of EUS-FNA<sup>[13,14]</sup>. ROSE has become much more common in practice. All studies to date have shown that ROSE improves diagnostic yield for EUS-FNA and reduces the need for more passes and duration of the procedure<sup>[15-17]</sup>. An EUS-FNA study of 182 patients showed that with ROSE there was a significantly lower number of inadequate samples (1% vs 12.6%) and a much higher diagnostic sensitivity (96.2% vs 78.2%)<sup>[18]</sup>.

Cytopathologist availability may be difficult and costly; many institutions do not have a cytopathologist readily available to come to endoscopy suites. Two studies have shown that having cytopathologist



**Figure 1 Pancreatic adenocarcinoma.** A: Endoscopic ultrasound image demonstrating a large pancreatic adenocarcinoma; B: Pancreatic adenocarcinoma. A crowded group of large, pleomorphic ductal cells with irregular hyperchromatic nuclei and prominent anisocytosis. These contrast well with an orderly sheet of benign ductal epithelial cells with round, uniform nuclei (bottom) (Diff-Quik™ stain, × 100); C: Similar in appearance malignant cells in a Papanicolaou-stained preparation (× 400).

available *via* telepathology for rapid review is as effective as when they are present in the room<sup>[19,20]</sup>. Further studies are looking at the impact of individual cytopathologists and cytology technicians on diagnostic yield. Recently it was shown that providing specific training to cytology technicians can dramatically impact their personal ability to confirm accuracy and diagnosis<sup>[21]</sup>.

The use of optimal equipment for EUS-FNA, including optimal needle size, has been studied extensively. Most commonly 22 or 25 gauge needles are used in EUS-FNA of pancreatic masses. There have been three randomized control studies looking at 22 gauge vs 25 gauge needles. The overall trend of these studies was a slightly more favorable yield with the 25 gauge needle, however none showed a statistically significant difference<sup>[22-24]</sup>.

Beyond choosing the appropriate needle size, different aspects of obtaining cytology including suctioning and stylet use have been studied. The role of suctioning in EUS-FNA has been studied with two randomized control trials showing no difference in diagnostic yield. One study did show higher cellularity with suctioning, however this did not lead to an increase in diagnostic accuracy<sup>[25,26]</sup>. Most experts agree that suction does not increase diagnostic yield, and in fact likely increases the amount of blood in specimens<sup>[27]</sup>. Use of stylet has also shown no benefit in improving diagnostic yield, with studies showing that it also increases the amount of blood thus leading to poorer samples<sup>[28,29]</sup>.

There is a definite learning curve in performing EUS-FNA for pancreatic masses. As endoscopists perform more EUS-FNA, sensitivity rises<sup>[30]</sup>. The current ASGE guidelines recommend 25 supervised EUS-FNA for the diagnosis of pancreatic adenocarcinoma, however literature supports more experience. It has been shown that rates of complications and number of passes needed also decrease with more experience. This study looked specifically at the performance of one endoscopist over the course of the first 300 EUS-FNAs, showing improved performance when comparing the

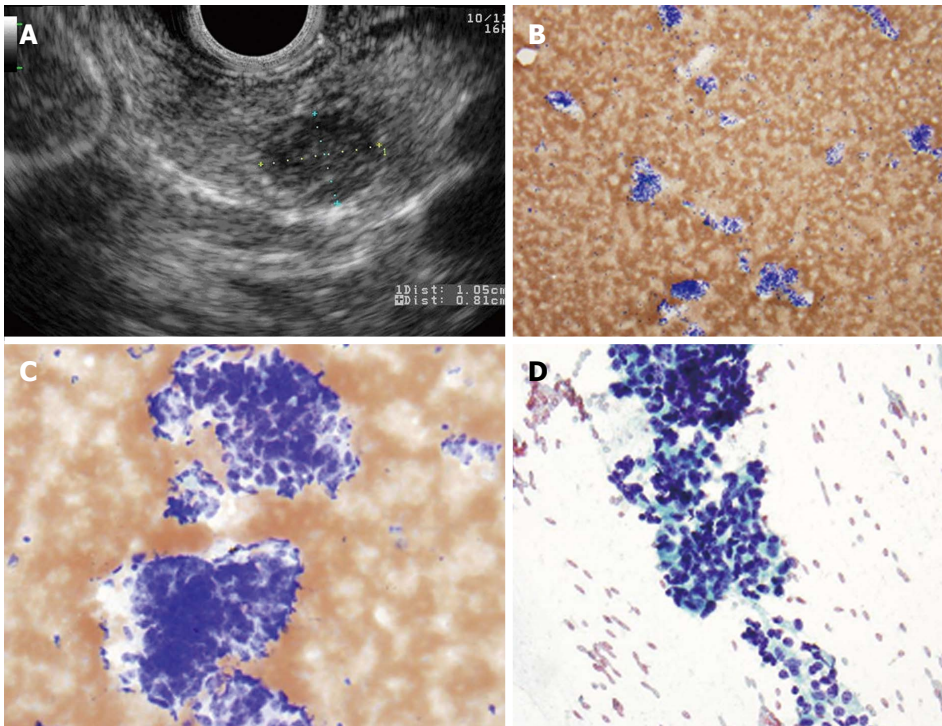
last 100 procedures performed to the first 100<sup>[31]</sup>.

## NON-ADENOCARCINOMA MASSES

Pancreatic adenocarcinoma is the most common pancreatic mass lesion, however approximately 10%-15% masses are due to other lesions including cystic neoplasms and neuroendocrine tumors<sup>[32]</sup>. Thus, getting an accurate diagnosis is important to devise an appropriate management plan. Recently, primary non-adenocarcinoma of the pancreas was found in 25% of EUS-FNA of pancreatic masses<sup>[33]</sup>. Neuroendocrine tumors comprised 37.5% of the primary non-adenocarcinomas of the pancreas while mucinous neoplasms with mixed cystic/solid components made up 25%. In this study, masses in the tail of the pancreas were more commonly primary non-adenocarcinoma of the pancreas, and these masses were less likely to have vascular invasion or malignant lymphadenopathy when compared to adenocarcinoma<sup>[33]</sup>. Primary non-adenocarcinoma of the pancreas is often difficult to differentiate from adenocarcinoma with EUS alone. Cytopathology becomes more useful in these cases. The differential diagnosis for pancreatic masses should include not only adenocarcinoma but also neuroendocrine tumors, lymphoma, and metastatic disease.

## NEUROENDOCRINE TUMORS

Neuroendocrine tumors of the pancreas are most commonly sporadic but some arise in context of inherited genetic syndromes, including multiple endocrine neoplasia type 1 and 2. Pancreatic neuroendocrine tumors are non-functional 40%-91% of time; the most common functioning tumors are insulinomas followed by glucagonomas, gastrinomas (Zollinger-Ellison syndrome) and somatostatinomas<sup>[34]</sup>. Some studies have shown that EUS-FNA is effective for obtaining preoperative determination of Ki-67 expression, which is an important prognostic factor for grading pancreatic endocrine tumors<sup>[35]</sup>. EUS-FNA is highly accurate for neuroendocrine tumors with sensitivity above 90%;



**Figure 2** Pancreatic neuroendocrine neoplasm. A: Endoscopic ultrasound image showing a 9 mm × 10 mm neuroendocrine tumor (insulinoma); B: Low-power view shows a cellular aspirate composed of clusters of uniform cells (Diff-QuikTM stain, × 100); C: High power view shows uniform cells with high N:C ratios and coarse chromatin (Diff-QuikTM stain, × 400); D: Papanicolaou stain highlights coarse, evenly distributed chromatin (× 400).

thus it is helpful for making a diagnosis<sup>[35,36]</sup>. Typical EUS imaging of a neuroendocrine tumor and cytologic appearance of the tumor cells are presented in Figure 2.

## LYMPHOMA

Primary pancreatic lymphoma is rare, comprising only 0.5% of all pancreatic masses<sup>[37]</sup>. In one study of EUS-FNA, lymphoma made up to 8% of the non-adenocarcinoma masses<sup>[33]</sup>. Most pancreatic lymphomas are non-Hodgkin lymphomas. Making an accurate diagnosis of lymphoma is important as treatment is generally chemotherapy and/or radiation as opposed to adenocarcinoma which is most often managed by surgery<sup>[37]</sup>. EUS-FNA has become more commonly used in the diagnosis of pancreatic lymphoma. Pancreatic lymphomas are less likely to present with jaundice. The addition of flow cytometry has greatly improved lymphoma diagnosis compared to cytology alone<sup>[38]</sup>. Figure 3 represents cytology from pancreatic follicular lymphoma showing a cellular aspirate composed of relatively monotonous in appearance lymphocytes with mild atypia.

## PANCREATIC GASTROINTESTINAL STROMAL TUMOR

Primary extra-gastrointestinal stromal tumor arising in the pancreas is exceedingly rare. There have been 21 cases reported in the English literature in the last 10

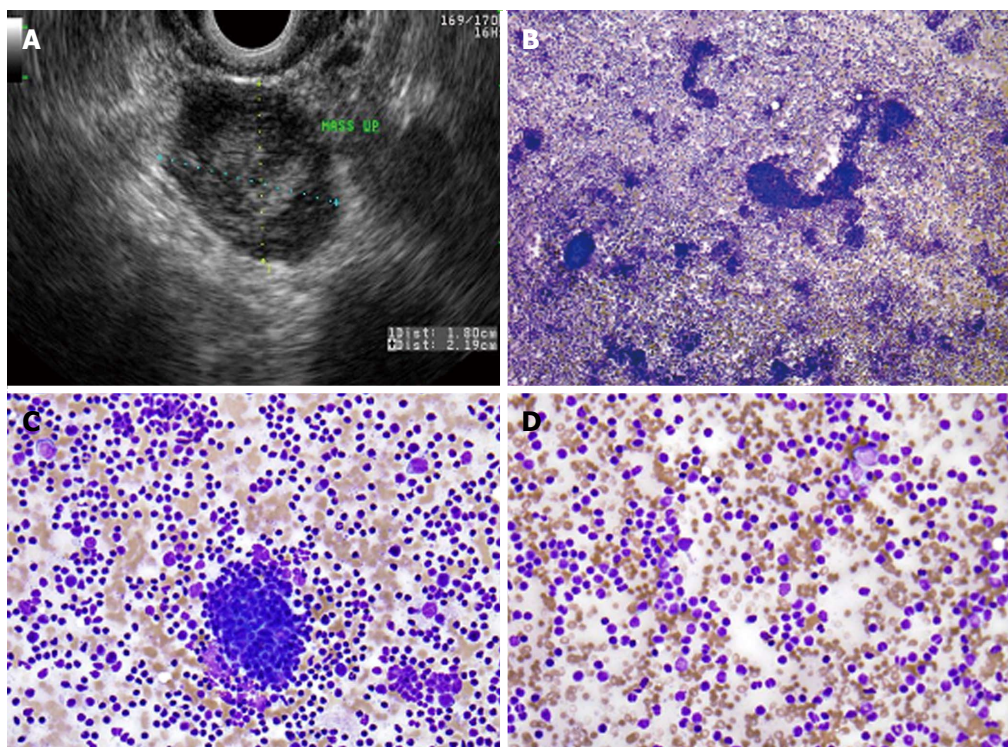
years. The diagnosis of gastrointestinal stromal tumor (GIST) is based on histological, immunohistochemical, and molecular features. Microscopically the tumor usually consists of spindle and/or epithelioid cells typically arranged in fascicles or nests. GIST can often have the appearance of neuroendocrine tumors on EUS (Figure 4) thus an addition of EUS-FNA is highly valuable for differentiating these tumor types<sup>[39]</sup>. Figure 5 represents cytology from a primary pancreatic GIST tumor. Immunohistochemical positivity of CD117 confirms the diagnosis of GIST (Figure 6).

## METASTATIC DISEASE

Metastatic disease to the pancreas is uncommon. The most common metastatic disease found with EUS-FNA includes renal cell carcinoma, melanoma and small cell lung cancer with renal cell carcinoma being the most common<sup>[33,40,41]</sup>. Other tumors metastatic to pancreas include papillary serous carcinoma (Figure 7), breast cancer, and rarely, sarcoma. EUS-FNA may be helpful in making these rare diagnoses.

## NON-DIAGNOSTIC SAMPLES

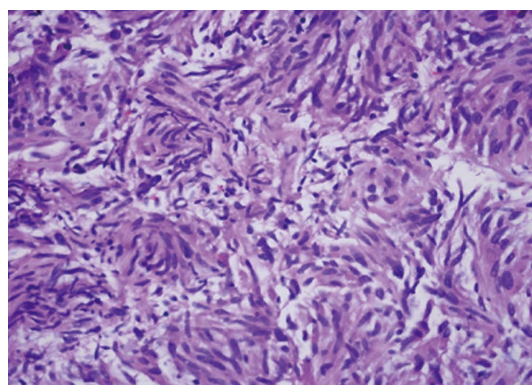
Despite pancreatic adenocarcinoma being the most common mass of the pancreas, the above examples highlight the broad differential that exists with a pancreatic mass. It also highlights the importance of tissue diagnosis especially when diagnosis is not clear. While EUS-FNA remains the procedure of choice for



**Figure 3 Primary pancreatic lymphoma.** A: Endoscopic ultrasound demonstrating a 1.8 cm × 2.2 cm lymphoma in the uncinus process of the pancreas; B: Low-power view showing a very cellular aspirate composed of discohesive lymphoid cells (Diff-QuikTM stain, × 100); C: High-power view showing an admixture of mature lymphocytes of various sizes with no more than a minimal atypia; lymphoid aggregates resembling a germinal center are also present (bottom); D: Small mature lymphocytes with cleaved and irregular nuclei raising suspicion for a mature B-cell lymphoma. (Diff-QuikTM stain, × 400).



**Figure 4** Endoscopic ultrasound image of large, 3.5 cm × 4.4 cm, round, hypoechoic, heterogeneous mass lesion arising from the tail of the pancreas.



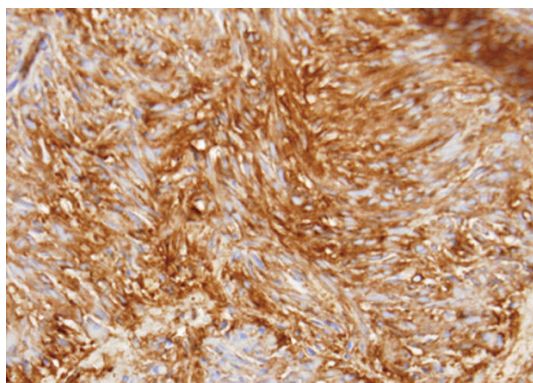
**Figure 5** Cytology from a primary pancreatic gastrointestinal stromal tumor.

obtaining tissue from pancreas lesions, non-diagnostic samples are not uncommon. Determining what to do when FNA is non-diagnostic is difficult. Multiple studies have shown the benefit of repeat EUS-FNA with high diagnostic yield rates of 61% to 84%<sup>[42-44]</sup>. Given this data, many authors recommend repeat EUS-FNA when providers are faced with a non-diagnostic sample.

## PANCREATIC NEOPLASMS-CYSTIC LESIONS

EUS-FNA plays a vital role in the examination of pancreatic cystic lesions. Pancreatic cysts are quite

common with incidental cysts being reported in range of 2.6%-13.6% depending on imaging modality used<sup>[45,46]</sup>. In one autopsy study cysts occurred in 24.3% of patients<sup>[47]</sup>. The true incidence of neoplastic pancreatic cysts is difficult to determine. Deciding which pancreatic cysts require EUS-FNA for evaluation is one of the first steps in management. With advances and ease of EUS-FNA, it would be tempting for endoscopists to perform FNA on all lesions referred to them; however there are certain attributes on imaging which may help to avoid FNA altogether. Magnetic resonance imaging (MRI) and CT are valuable in assessing cystic size and determining if cystic lesions have worrisome findings



**Figure 6** Pancreatic gastrointestinal stromal tumor, cytology demonstrates a spindle cell neoplasm with moderate nuclear pleomorphism which stains strongly positive for CD117 and negative for desmin, consistent with a gastrointestinal stromal tumor arising from the pancreas. (Courtesy of Rashmi Agni, University of Wisconsin Department of Pathology and Laboratory Medicine).

such as connection with the pancreatic main duct. MRI has a distinct advantage over CT in visualizing fluid, particularly in T2 weighted series<sup>[46]</sup>. EUS alone has a particular advantage over other imaging modalities for evaluation of cysts due to the close proximity of lesions. EUS is particularly good at examining cyst morphology including size location, internal structural features, wall thickness, the presence of calcifications and ductal communication.

Generally cystic lesions are divided into two categories: neoplastic cystic tumors and non-neoplastic cystic tumors. Neoplastic cystic tumors include mucinous cystic neoplasm (MCN), intraductal papillary-mucinous neoplasm (IPMN), and serous cystic neoplasm (SCN). Morphologic features are different for each cyst type.

SCNs, often called microcystic adenoma or glycogen-rich cystadenoma, are generally considered benign lesions as they have been associated with only a few cases of malignant conversion. On imaging, SCNs often have a honeycomb appearance. A central stellate scar is pathognomonic for SCN. There tend to be thin internal septa that are hypervascular on Doppler. Around 10% of SCNs are unilocular without an obvious microcystic component<sup>[48,49]</sup>.

MCNs are found almost exclusively in the distal pancreas. They tend to occur in middle-aged women and generally considered to have a low malignant potential<sup>[50]</sup>. MCNs are characterized by two distinct histologic components: an inner epithelial layer composed of tall mucin-secreting cells, and a densely cellular ovarian-type stroma<sup>[50]</sup>. On imaging, MCNs are multiloculated cysts with a visible cystic wall. Peripheral calcification (egg shell calcification) can be seen in 10%-25% of MCNs and help to differentiate them from SCN. It is not always possible to determine lesions to be MCN on imaging alone thus FNA can be helpful. Due to malignant potential, most MCNs are removed surgically. Lesions less than 4 cm have

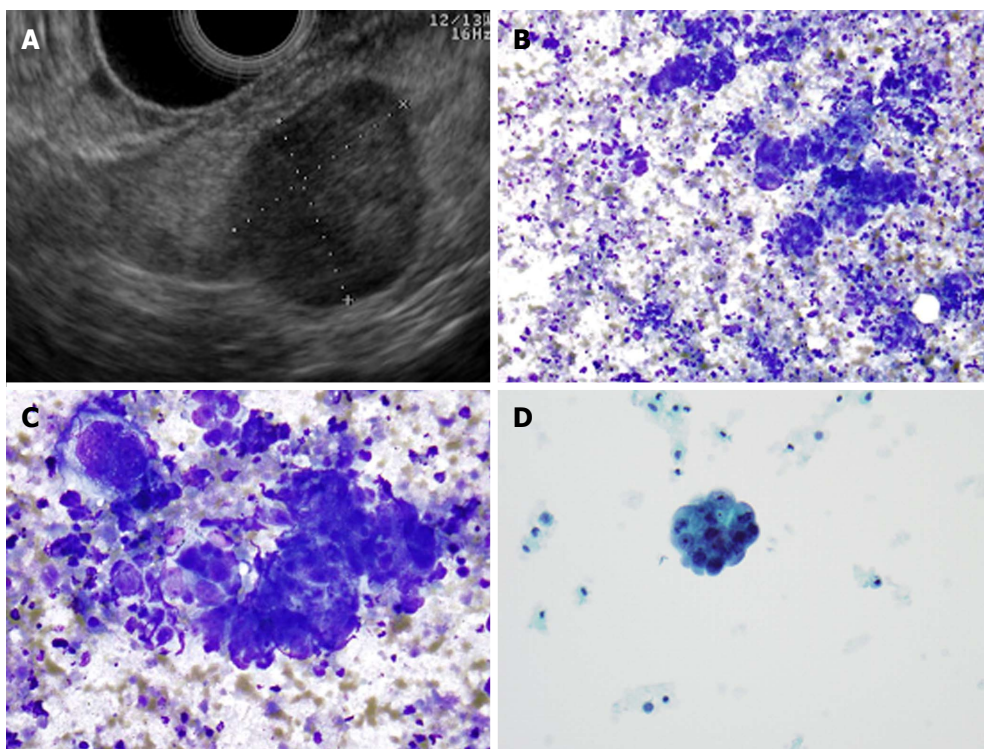
low malignant potential, and in elderly patients who are not strong surgical candidates, these lesions can be observed<sup>[50]</sup>. Differentiating MCN from mucinous cystadenocarcinoma (Figure 8) by imaging alone is difficult; cytology and fluid analysis are both helpful in differentiating the two.

IPMNs were first recognized in 1982 and since then these cysts are commonly seen incidentally on cross sectional imaging. IPMN can appear as a cyst or a cluster of cysts in the uncinata process (Figure 9). IPMNs are generally defined as intraductal epithelial neoplasms of mucin-producing cells of the main duct or side branches<sup>[51]</sup>. Main duct IPMNs can cause dilation of the pancreatic duct up often > 5 cm; and have higher malignant potential thus are generally managed surgically<sup>[52]</sup>. Main duct IPMNs can create the classic "fish mouth papilla" due to the presence of mucin within the main duct (Figure 10).

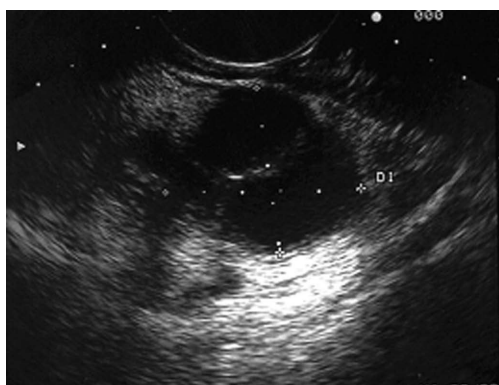
Despite the advances of EUS in visualizing cystic lesions, EUS alone is often not enough in determining if malignancy is present. The addition of cystic fluid analysis further helps differentiate cysts. Currently, measurement of amylase and carcino-embryonic antigen (CEA) are the most routinely used in clinical practice. Amylase is often used in differentiating cystic neoplasms from pseudocysts, with amylase < 250 U/L being highly specific for SCN and MCNS (98%). In a review of 12 studies, the median values of amylase in pseudocysts, SCN, MCN and mucinous cystadenocarcinoma were 11000, 250, 8000 and 150 IU/L, respectively<sup>[53]</sup>.

Multiple tumor markers have been studied to help differentiate mucinous neoplasms from non-mucinous neoplasms. These markers include CEA, CA 19-9, CA 72-4 and CA-125; ultimately CEA was determined to be the most useful in this setting<sup>[53]</sup>. A cut off of 192 ng/mL for CEA was first demonstrated by Brugge *et al*<sup>[54]</sup> as providing the greatest area under the curve (0.79) for differentiating mucinous vs nonmucinous cystic lesions. Additionally, a CEA > 800 ng/mL has been shown to be 79% accurate for mucinous lesions (MCN or mucinous cystadenocarcinoma)<sup>[53]</sup>. Higher CEA levels are more often associated with malignant lesions. Cyst fluid cytology can also be helpful in determining if there is an underlying mucinous cystadenocarcinoma although sensitivity is not high (sensitivity of 48% for malignant cystic lesions)<sup>[53]</sup>. Brugge *et al*<sup>[54]</sup> showed the sensitivity of cytology for MCN to be as low as 34.5% with a specificity of 83%. Figure 11A and B represents cytology from a mucinous neoplasm; mucinous cystic neoplasm and intraductal papillary mucinous neoplasm are indistinguishable cytologically. Most centers combine amylase and CEA measurements and fluid cytology to establish the diagnosis of mucinous cystic neoplasm.

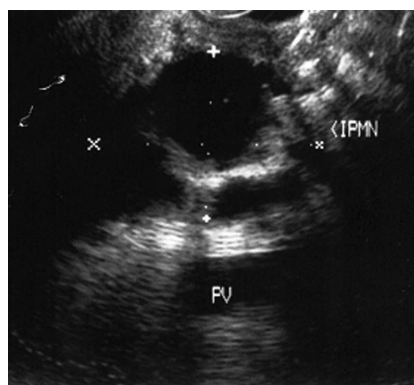
Recently DNA analysis and k-ras mutation have also been shown to be useful to determine pancreatic cyst type and the presence of malignancy. In the PANDA



**Figure 7 Metastatic high-grade serous carcinoma of the ovary.** A: Endoscopic ultrasound image of a metastatic high-grade serous carcinoma of the ovary; B: Low-power view showing a cellular aspirate with a necrotic background (Diff-QuikTM stain,  $\times 100$ ); C: High-power view showing groups of malignant cells with large nuclei and prominent nucleoli. These cells are difficult to distinguish from a primary pancreatic ductal adenocarcinoma; however, necrotic background is not common in a primary tumor (Diff-QuikTM stain,  $\times 400$ ); D: Papanicolaou stain showing a cannon ball shaped group of malignant cells with large, round nuclei and prominent nucleoli, characteristic of serous ovarian carcinoma ( $\times 400$ ).



**Figure 8** Endoscopic ultrasound image demonstrating a cystadenocarcinoma.

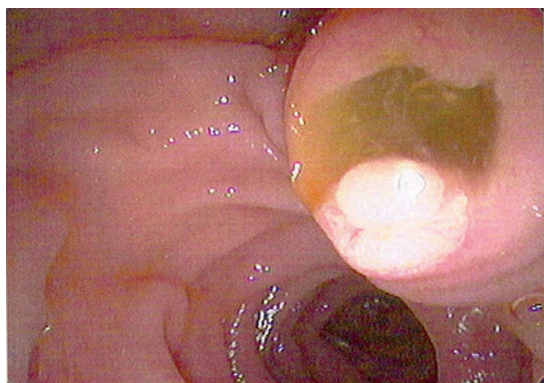


**Figure 9** Endoscopic ultrasound image demonstrating an intraductal papillary-mucinous neoplasm.

study, using the criteria of a high amplitude k-ras mutation followed by allelic loss showed a maximum specificity of 96% for malignancy. Additionally, this study was able to demonstrate that all malignant cysts that were negative by conventional cytologic evaluation could be diagnosed as malignant by using DNA analysis<sup>[55]</sup>. Recently two studies have used microRNAs (miRNA) with good success differentiating pancreatic cysts<sup>[56,57]</sup> with one study showing a panel of miRNA being able to distinguish MCN from SCN, branch duct-IPMN, main duct-IPMN, and adenocarcinoma with a sensitivity and specificity of 100%.

## COMPLICATIONS

One of the biggest concerns when considering aspiration of a cystic lesion is the introduction of infection. Although rare, multiple aspirations increase this risk. The current guidelines recommend one aspiration for cysts to minimize this risk, followed by 48 h of antibiotic therapy<sup>[58]</sup>. Another complication when aspirating cysts is intracystic hemorrhage, also rare, endoscopists should be aware of this complication. Most patients with intracystic hemorrhage can still be managed on an outpatient basis with antibiotics<sup>[59]</sup>.



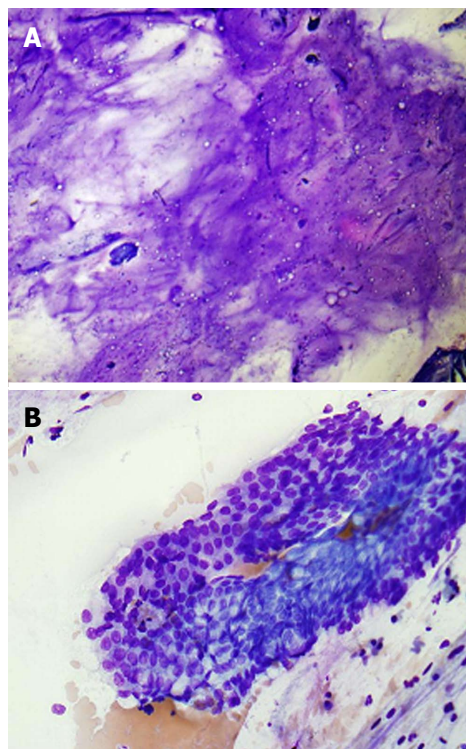
**Figure 10** Endoscopic view of “fish mouth papilla” due to the presence of mucin within the main duct.

The overall rate of complication with EUS alone or EUS-FNA is quite low. Complications other than infection and bleeding include perforation and the unique risk of pancreatitis. Perforation with EUS is rather rare. In a survey study, cervical esophageal perforation occurred in only 16 of 43852 reported upper EUS procedures at a frequency of 0.03%. Most of these patients were elderly, and most of the EUS procedures were done by trainees or personal with limited experience (less than 1 year)<sup>[60]</sup>. Experts agree that EUS is associated with a similar rate of perforations compared with standard endoscopy<sup>[58]</sup>.

Pancreatitis is a unique complication associated with EUS-FNA for aspiration of both masses and cysts. Reported rates of pancreatitis associated with pancreatic EUS-FNA range from 0% to 2%<sup>[58]</sup>. In one study where two cases of pancreatitis were reported, both were mild and both patients had a recent history of pancreatitis. Authors concluded a history of recent pancreatitis could be potential risk factor for procedure-induced pancreatitis<sup>[61]</sup>.

## CONCLUSIONS

EUS-FNA is a safe and effective procedure for the evaluation of solid and cystic lesions of the pancreas. Ways to optimize diagnostic yield for pancreatic masses continue to be investigated; overall the availability of ROSE seems to have the biggest impact on results. Optimal needle size appears to be 22 or 25 gauge, while suctioning and stylet do not have a positive impact on performance. EUS-FNA is helpful in differentiating adenocarcinoma from other more rare lesions including neuroendocrine tumors, lymphoma and metastatic lesions, and whenever diagnostic uncertainty exists; EUS-FNA should be pursued. In the evaluation of cystic lesions, EUS-FNA is a safe and effective way of classifying lesions. Measurement of cystic fluid CEA, amylase and cytology remain valuable in routine aspiration. Studies on DNA markers show promise in optimizing the detection of cystic malignancies, although currently routine use of DNA markers is not recommended. Whether it is evaluating a solid or cystic



**Figure 11** Pancreatic mucinous neoplasm. A: Low-power view of pancreatic mucinous neoplasm showing copious thick, colloid-like mucin (Diff-Quik™ stain, × 100); B: High-power view of pancreatic mucinous neoplasm showing sheets of only mildly atypical columnar cells containing intracytoplasmic mucin; these cells are very difficult to distinguish from benign gastric or duodenal epithelium (Diff-Quik™ stain, × 400).

pancreatic lesion, EUS-FNA plays a pivotal role, as technology improves this role will continue to grow.

## REFERENCES

- 1 **Helmstaedter L**, Riemann JF. Pancreatic cancer--EUS and early diagnosis. *Langenbecks Arch Surg* 2008; **393**: 923-927 [PMID: 18247044 DOI: 10.1007/s00423-007-0275-1]
- 2 **Jemal A**, Siegel R, Ward E, Hao Y, Xu J, Thun MJ. Cancer statistics, 2009. *CA Cancer J Clin* 2009; **59**: 225-249 [PMID: 19474385 DOI: 10.3322/caac.20006]
- 3 **Volmar KE**, Vollmer RT, Jowell PS, Nelson RC, Xie HB. Pancreatic FNA in 1000 cases: a comparison of imaging modalities. *Gastrointest Endosc* 2005; **61**: 854-861 [PMID: 15933687]
- 4 **Dewitt J**, Devereaux BM, Lehman GA, Sherman S, Imperiale TF. Comparison of endoscopic ultrasound and computed tomography for the preoperative evaluation of pancreatic cancer: a systematic review. *Clin Gastroenterol Hepatol* 2006; **4**: 717-725; quiz 664 [PMID: 16675307 DOI: 10.1016/j.cgh.2006.02.020]
- 5 **Vilmann P**, Jacobsen GK, Henriksen FW, Hancke S. Endoscopic ultrasonography with guided fine needle aspiration biopsy in pancreatic disease. *Gastrointest Endosc* 1992; **38**: 172-173 [PMID: 1568614]
- 6 **Afiy AM**, al-Khafaji BM, Kim B, Scheiman JM. Endoscopic ultrasound-guided fine needle aspiration of the pancreas. Diagnostic utility and accuracy. *Acta Cytol* 2003; **47**: 341-348 [PMID: 12789912]
- 7 **Turner BG**, Cizginer S, Agarwal D, Yang J, Pitman MB, Brugge WR. Diagnosis of pancreatic neoplasia with EUS and FNA: a report of accuracy. *Gastrointest Endosc* 2010; **71**: 91-98 [PMID: 19846087 DOI: 10.1016/j.gie.2009.06.017]
- 8 **Eloubeidi MA**, Varadarajulu S, Desai S, Shirley R, Heslin MJ, Mehra M, Arnoletti JP, Eltoun I, Wilcox CM, Vickers SM. A



- prospective evaluation of an algorithm incorporating routine preoperative endoscopic ultrasound-guided fine needle aspiration in suspected pancreatic cancer. *J Gastrointest Surg* 2007; **11**: 813-819 [PMID: 17440790 DOI: 10.1007/s11605-007-0151-x]
- 9 **Puli SR**, Bechtold ML, Buxbaum JL, Eloubeidi MA. How good is endoscopic ultrasound-guided fine-needle aspiration in diagnosing the correct etiology for a solid pancreatic mass?: A meta-analysis and systematic review. *Pancreas* 2013; **42**: 20-26 [PMID: 23254913 DOI: 10.1097/MPA.0b013e3182546e79]
  - 10 **Chen J**, Yang R, Lu Y, Xia Y, Zhou H. Diagnostic accuracy of endoscopic ultrasound-guided fine-needle aspiration for solid pancreatic lesion: a systematic review. *J Cancer Res Clin Oncol* 2012; **138**: 1433-1441 [PMID: 22752601 DOI: 10.1007/s00432-012-1268-1]
  - 11 **Athanassiadou P**, Grapsa D. Value of endoscopic retrograde cholangiopancreatography-guided brushings in preoperative assessment of pancreaticobiliary strictures: what's new? *Acta Cytol* 2008; **52**: 24-34 [PMID: 18323272]
  - 12 **Micames C**, Jowell PS, White R, Paulson E, Nelson R, Morse M, Hurwitz H, Pappas T, Tyler D, McGrath K. Lower frequency of peritoneal carcinomatosis in patients with pancreatic cancer diagnosed by EUS-guided FNA vs. percutaneous FNA. *Gastrointest Endosc* 2003; **58**: 690-695 [PMID: 14595302]
  - 13 **Dumonceau JM**, Koessler T, van Hooft JE, Fockens P. Endoscopic ultrasonography-guided fine needle aspiration: Relatively low sensitivity in the endosonographer population. *World J Gastroenterol* 2012; **18**: 2357-2363 [PMID: 22654426 DOI: 10.3748/wjg.v18.i19.2357]
  - 14 **Ecka RS**, Sharma M. Rapid on-site evaluation of EUS-FNA by cytopathologist: an experience of a tertiary hospital. *Diagn Cytopathol* 2013; **41**: 1075-1080 [PMID: 24166808 DOI: 10.1002/dc.23047]
  - 15 **Pellisé Urquiza M**, Fernández-Esparrach G, Solé M, Colomo L, Castells A, Llach J, Mata A, Bordas JM, Piqué JM, Ginès A. Endoscopic ultrasound-guided fine needle aspiration: predictive factors of accurate diagnosis and cost-minimization analysis of on-site pathologist. *Gastroenterol Hepatol* 2007; **30**: 319-324 [PMID: 17662213]
  - 16 **Savoy AD**, Raimondo M, Woodward TA, Noh K, Pungpapong S, Jones AD, Crook J, Wallace MB. Can endosonographers evaluate on-site cytologic adequacy? A comparison with cytotechnologists. *Gastrointest Endosc* 2007; **65**: 953-957 [PMID: 17531627 DOI: 10.1016/j.gie.2006.11.014]
  - 17 **Klapman JB**, Logrono R, Dye CE, Waxman I. Clinical impact of on-site cytopathology interpretation on endoscopic ultrasound-guided fine needle aspiration. *Am J Gastroenterol* 2003; **98**: 1289-1294 [PMID: 12818271 DOI: 10.1111/j.1572-0241.2003.07472.x]
  - 18 **Iglesias-García J**, Dominguez-Munoz JE, Abdulkader I, Larino-Noia J, Eugenyeva E, Lozano-Leon A, Forteza-Vila J. Influence of on-site cytopathology evaluation on the diagnostic accuracy of endoscopic ultrasound-guided fine needle aspiration (EUS-FNA) of solid pancreatic masses. *Am J Gastroenterol* 2011; **106**: 1705-1710 [PMID: 21483464 DOI: 10.1038/ajg.2011.119]
  - 19 **Buxbaum JL**, Eloubeidi MA, Lane CJ, Varadarajulu S, Linder A, Crowe AE, Jhala D, Jhala NC, Crowe DR, Eltoum IA. Dynamic telecytology compares favorably to rapid onsite evaluation of endoscopic ultrasound fine needle aspirates. *Dig Dis Sci* 2012; **57**: 3092-3097 [PMID: 22729624 DOI: 10.1007/s10620-012-2275-4]
  - 20 **Khurana KK**, Rong R, Wang D, Roy A. Dynamic telecytology for on-site preliminary diagnosis of endoscopic ultrasound-guided fine needle aspiration of pancreatic masses. *J Telemed Telecare* 2012; **18**: 253-259 [PMID: 22302762 DOI: 10.1258/jtt.2011.110706]
  - 21 **Petrone MC**, Arcidiacono PG, Carrara S, Mezzi G, Doglioni C, Testoni PA. Does cytotechnician training influence the accuracy of EUS-guided fine-needle aspiration of pancreatic masses? *Dig Liver Dis* 2012; **44**: 311-314 [PMID: 22226546 DOI: 10.1016/j.dld.2011.12.001]
  - 22 **Camellini L**, Carlinfante G, Azzolini F, Iori V, Cavina M, Sereni G, Decembrino F, Gallo C, Tamagnini I, Valli R, Piana S, Campari C, Gardini G, Sassatelli R. A randomized clinical trial comparing 22G and 25G needles in endoscopic ultrasound-guided fine-needle aspiration of solid lesions. *Endoscopy* 2011; **43**: 709-715 [PMID: 21611946 DOI: 10.1055/s-0030-1256482]
  - 23 **Fabbri C**, Polifemo AM, Luigiano C, Cennamo V, Baccarini P, Collina G, Fornelli A, Macchia S, Zanini N, Jovine E, Fiscoletti M, Alibrandi A, D'Imperio N. Endoscopic ultrasound-guided fine needle aspiration with 22- and 25-gauge needles in solid pancreatic masses: a prospective comparative study with randomisation of needle sequence. *Dig Liver Dis* 2011; **43**: 647-652 [PMID: 21592873 DOI: 10.1016/j.dld.2011.04.005]
  - 24 **Siddiqui UD**, Rossi F, Rosenthal LS, Padda MS, Murali-Dharan V, Aslanian HR. EUS-guided FNA of solid pancreatic masses: a prospective, randomized trial comparing 22-gauge and 25-gauge needles. *Gastrointest Endosc* 2009; **70**: 1093-1097 [PMID: 19640524 DOI: 10.1016/j.gie.2009.05.037]
  - 25 **Wallace MB**, Kennedy T, Durkalski V, Eloubeidi MA, Etamad R, Matsuda K, Lewin D, Van Velse A, Hennesey W, Hawes RH, Hoffman BJ. Randomized controlled trial of EUS-guided fine needle aspiration techniques for the detection of malignant lymphadenopathy. *Gastrointest Endosc* 2001; **54**: 441-447 [PMID: 11577304]
  - 26 **Puri R**, Vilmann P, Săftoiu A, Skov BG, Linnemann D, Hassan H, Garcia ES, Gorunescu F. Randomized controlled trial of endoscopic ultrasound-guided fine-needle sampling with or without suction for better cytological diagnosis. *Scand J Gastroenterol* 2009; **44**: 499-504 [PMID: 19117242 DOI: 10.1080/00365520802647392]
  - 27 **Varadarajulu S**, Fockens P, Hawes RH. Best practices in endoscopic ultrasound-guided fine-needle aspiration. *Clin Gastroenterol Hepatol* 2012; **10**: 697-703 [PMID: 22475740 DOI: 10.1016/j.cgh.2012.03.017]
  - 28 **Sahai AV**, Paquin SC, Gariépy G. A prospective comparison of endoscopic ultrasound-guided fine needle aspiration results obtained in the same lesion, with and without the needle stylet. *Endoscopy* 2010; **42**: 900-903 [PMID: 20725886 DOI: 10.1055/s-0030-1255676]
  - 29 **Rastogi A**, Wani S, Gupta N, Singh V, Gaddam S, Reddy Masu S, Ulusarac O, Fan F, Romanas M, Dennis KL, Sharma P, Bansal A, Oropeza-Vail M, Olyae M. A prospective, single-blind, randomized, controlled trial of EUS-guided FNA with and without a stylet. *Gastrointest Endosc* 2011; **74**: 58-64 [PMID: 21514932 DOI: 10.1016/j.gie.2011.02.015]
  - 30 **Mertz H**, Gautam S. The learning curve for EUS-guided FNA of pancreatic cancer. *Gastrointest Endosc* 2004; **59**: 33-37 [PMID: 14722544]
  - 31 **Eloubeidi MA**, Tamhane A. EUS-guided FNA of solid pancreatic masses: a learning curve with 300 consecutive procedures. *Gastrointest Endosc* 2005; **61**: 700-708 [PMID: 15855975]
  - 32 **Imaoka H**, Yamao K, Bhatia V, Shimizu Y, Yatabe Y, Koshikawa T, Kinoshita Y. Rare pancreatic neoplasms: the utility of endoscopic ultrasound-guided fine-needle aspiration-a large single center study. *J Gastroenterol* 2009; **44**: 146-153 [PMID: 19214677 DOI: 10.1007/s00535-008-2282-6]
  - 33 **Gagovic V**, Spier BJ, DeLee RJ, Barancin C, Lindstrom M, Einstein M, Byrne S, Harter J, Agni R, Pfau PR, Frick TJ, Soni A, Gopal DV. Endoscopic ultrasound fine-needle aspiration characteristics of primary adenocarcinoma versus other malignant neoplasms of the pancreas. *Can J Gastroenterol* 2012; **26**: 691-696 [PMID: 23061060]
  - 34 **Kulke MH**, Benson AB, Bergsland E, Berlin JD, Blaszkowsky LS, Choti MA, Clark OH, Doherty GM, Eason J, Emerson L, Engstrom PF, Goldner WS, Heslin MJ, Kandeel F, Kunz PL, Kuvshinoff BW, Moley JF, Pillarisetty VG, Saltz L, Scheingart DE, Shah MH, Shibata S, Strosberg JR, Vauthey JN, White R, Yao JC, Freedman-Cass DA, Dwyer MA. Neuroendocrine tumors. *J Natl Compr Canc Netw* 2012; **10**: 724-764 [PMID: 22679117]
  - 35 **Larghi A**, Capurso G, Carnuccio A, Ricci R, Alfieri S, Galasso D, Lugli F, Bianchi A, Panzuto F, De Marinis L, Falconi M, Delle Fave G, Doglietto GB, Costamagna G, Rindi G. Ki-67 grading of nonfunctioning pancreatic neuroendocrine tumors on histologic samples obtained by EUS-guided fine-needle tissue acquisition: a

- prospective study. *Gastrointest Endosc* 2012; **76**: 570-577 [PMID: 22898415 DOI: 10.1016/j.gie.2012.04.477]
- 36 **Unno J**, Kanno A, Masamune A, Kasajima A, Fujishima F, Ishida K, Hamada S, Kume K, Kikuta K, Hirota M, Motoi F, Unno M, Shimosegawa T. The usefulness of endoscopic ultrasound-guided fine-needle aspiration for the diagnosis of pancreatic neuroendocrine tumors based on the World Health Organization classification. *Scand J Gastroenterol* 2014; **49**: 1367-1374 [PMID: 25180490 DOI: 10.3109/00365521.2014.934909]
- 37 **Boni L**, Benevento A, Dionigi G, Cabrini L, Dionigi R. Primary pancreatic lymphoma. *Surg Endosc* 2002; **16**: 1107-1108 [PMID: 11984658 DOI: 10.1007/s00464-001-4247-1]
- 38 **Rossi ED**, Larghi A, Verna EC, Martini M, Galasso D, Carnuccio A, Larocca LM, Costamagna G, Fadda G. Endoscopic ultrasound-guided fine-needle aspiration with liquid-based cytologic preparation in the diagnosis of primary pancreatic lymphoma. *Pancreas* 2010; **39**: 1299-1302 [PMID: 20944491 DOI: 10.1097/MPA.0b013e3181dc694e]
- 39 **Beltrame V**, Gruppo M, Pastorelli D, Pizzi S, Merigliano S, Sperti C. Extra-gastrointestinal stromal tumor of the pancreas: case report and review of the literature. *World J Surg Oncol* 2014; **12**: 105 [PMID: 24755359 DOI: 10.1186/1477-7819-12-105]
- 40 **Volmar KE**, Jones CK, Xie HB. Metastases in the pancreas from nonhematologic neoplasms: report of 20 cases evaluated by fine-needle aspiration. *Diagn Cytopathol* 2004; **31**: 216-220 [PMID: 15452907 DOI: 10.1002/dc.20100]
- 41 **Minni F**, Casadei R, Perenze B, Greco VM, Marrano N, Margiotta A, Marrano D. Pancreatic metastases: observations of three cases and review of the literature. *Pancreatol* 2004; **4**: 509-520 [PMID: 15316227 DOI: 10.1159/00080248]
- 42 **Eloubeidi MA**, Varadarajulu S, Desai S, Wilcox CM. Value of repeat endoscopic ultrasound-guided fine needle aspiration for suspected pancreatic cancer. *J Gastroenterol Hepatol* 2008; **23**: 567-570 [PMID: 18397485 DOI: 10.1111/j.1440-1746.2007.05119.x]
- 43 **DeWitt J**, McGreevy K, Sherman S, LeBlanc J. Utility of a repeated EUS at a tertiary-referral center. *Gastrointest Endosc* 2008; **67**: 610-619 [PMID: 18279866 DOI: 10.1016/j.gie.2007.09.037]
- 44 **Nicaud M**, Hou W, Collins D, Wagh MS, Chauhan S, Draganov PV. The utility of repeat endoscopic ultrasound-guided fine needle aspiration for suspected pancreatic cancer. *Gastroenterol Res Pract* 2010; **2010**: 268290 [PMID: 21234311 DOI: 10.1155/2010/268290]
- 45 **Laffan TA**, Horton KM, Klein AP, Berlanstein B, Siegelman SS, Kawamoto S, Johnson PT, Fishman EK, Hruban RH. Prevalence of unsuspected pancreatic cysts on MDCT. *AJR Am J Roentgenol* 2008; **191**: 802-807 [PMID: 18716113 DOI: 10.2214/AJR.07.3340]
- 46 **Lee KS**, Sekhar A, Rofsky NM, Pedrosa I. Prevalence of incidental pancreatic cysts in the adult population on MR imaging. *Am J Gastroenterol* 2010; **105**: 2079-2084 [PMID: 20354507 DOI: 10.1038/ajg.2010.122]
- 47 **Kimura W**, Nagai H, Kuroda A, Muto T, Esaki Y. Analysis of small cystic lesions of the pancreas. *Int J Pancreatol* 1995; **18**: 197-206 [PMID: 8708390 DOI: 10.1007/BF02784942]
- 48 **Kubo H**, Nakamura K, Itaba S, Yoshinaga S, Kinukawa N, Sadamoto Y, Ito T, Yonemasu H, Takayanagi R. Differential diagnosis of cystic tumors of the pancreas by endoscopic ultrasonography. *Endoscopy* 2009; **41**: 684-689 [PMID: 19670136 DOI: 10.1055/s-0029-1214952]
- 49 **But DY**, Poley JW. To fine needle aspiration or not? An endosonographer's approach to pancreatic cystic lesions. *Endosc Ultrasound* 2014; **3**: 82-90 [PMID: 24955337 DOI: 10.4103/2303-9027.124307]
- 50 **Crippa S**, Salvia R, Warshaw AL, Domínguez I, Bassi C, Falconi M, Thayer SP, Zamboni G, Lauwers GY, Mino-Kenudson M, Capelli P, Pederzoli P, Castillo CF. Mucinous cystic neoplasm of the pancreas is not an aggressive entity: lessons from 163 resected patients. *Ann Surg* 2008; **247**: 571-579 [PMID: 18362619 DOI: 10.1097/SLA.0b013e31811f4449]
- 51 **Cooper CL**, O'Toole SA, Kench JG. Classification, morphology and molecular pathology of premalignant lesions of the pancreas. *Pathology* 2013; **45**: 286-304 [PMID: 23442735 DOI: 10.1097/PAT.0b013e32835f2205]
- 52 **Salvia R**, Fernández-del Castillo C, Bassi C, Thayer SP, Falconi M, Mantovani W, Pederzoli P, Warshaw AL. Main-duct intraductal papillary mucinous neoplasms of the pancreas: clinical predictors of malignancy and long-term survival following resection. *Ann Surg* 2004; **239**: 678-685; discussion 685-687 [PMID: 15082972]
- 53 **van der Waaij LA**, van Dullemen HM, Porte RJ. Cyst fluid analysis in the differential diagnosis of pancreatic cystic lesions: a pooled analysis. *Gastrointest Endosc* 2005; **62**: 383-389 [PMID: 16111956]
- 54 **Brugge WR**, Lewandrowski K, Lee-Lewandrowski E, Centeno BA, Szydio T, Regan S, del Castillo CF, Warshaw AL. Diagnosis of pancreatic cystic neoplasms: a report of the cooperative pancreatic cyst study. *Gastroenterology* 2004; **126**: 1330-1336 [PMID: 15131794]
- 55 **Khalid A**, Zahid M, Finkelstein SD, LeBlanc JK, Kaushik N, Ahmad N, Brugge WR, Edmundowicz SA, Hawes RH, McGrath KM. Pancreatic cyst fluid DNA analysis in evaluating pancreatic cysts: a report of the PANDA study. *Gastrointest Endosc* 2009; **69**: 1095-1102 [PMID: 19152896 DOI: 10.1016/j.gie.2008.07.033]
- 56 **Matthaei H**, Wylie D, Lloyd MB, Dal Molin M, Kempainen J, Mayo SC, Wolfgang CL, Schulick RD, Langfield L, Andruss BF, Adai AT, Hruban RH, Szafranska-Schwarzbach AE, Maitra A. miRNA biomarkers in cyst fluid augment the diagnosis and management of pancreatic cysts. *Clin Cancer Res* 2012; **18**: 4713-4724 [PMID: 22723372 DOI: 10.1158/1078-0432.CCR-12-0035]
- 57 **Lee LS**, Szafranska-Schwarzbach AE, Wylie D, Doyle LA, Bellizzi AM, Kadiyala V, Suleiman S, Banks PA, Andruss BF, Conwell DL. Investigating MicroRNA Expression Profiles in Pancreatic Cystic Neoplasms. *Clin Transl Gastroenterol* 2014; **5**: e47 [PMID: 24476997 DOI: 10.1038/ctg.2013.18]
- 58 **Adler DG**, Jacobson BC, Davila RE, Hirota WK, Leighton JA, Qureshi WA, Rajan E, Zuckerman MJ, Fanelli RD, Baron TH, Faigel DO. ASGE guideline: complications of EUS. *Gastrointest Endosc* 2005; **61**: 8-12 [PMID: 15672049]
- 59 **Varadarajulu S**, Eloubeidi MA. Frequency and significance of acute intracystic hemorrhage during EUS-FNA of cystic lesions of the pancreas. *Gastrointest Endosc* 2004; **60**: 631-635 [PMID: 15472697]
- 60 **Das A**, Sivak MV, Chak A. Cervical esophageal perforation during EUS: a national survey. *Gastrointest Endosc* 2001; **53**: 599-602 [PMID: 11323585]
- 61 **Gress F**, Michael H, Gelrud D, Patel P, Gottlieb K, Singh F, Grendell J. EUS-guided fine-needle aspiration of the pancreas: evaluation of pancreatitis as a complication. *Gastrointest Endosc* 2002; **56**: 864-867 [PMID: 12447299 DOI: 10.1067/mge.2002.129602]

P- Reviewer: Barreto S, Neri V, Shi XY S- Editor: Gong XM

L- Editor: A E- Editor: Wu HL





Published by **Baishideng Publishing Group Inc**

8226 Regency Drive, Pleasanton, CA 94588, USA

Telephone: +1-925-223-8242

Fax: +1-925-223-8243

E-mail: [bpgoffice@wjgnet.com](mailto:bpgoffice@wjgnet.com)

Help Desk: <http://www.wjgnet.com/esps/helpdesk.aspx>

<http://www.wjgnet.com>

