

CORRECTION

# Correction: Activation of CNTF/CNTFR $\alpha$ Signaling Pathway by hRheb(S16H) Transduction of Dopaminergic Neurons *In Vivo*

The *PLOS ONE* Staff

There are errors in the author affiliations. The affiliations should appear as shown here: Kyoung Hoon Jeong<sup>1,2</sup>, Jin Han Nam<sup>4</sup>, Byung Kwan Jin,<sup>4,5</sup> and Sang Ryong Kim<sup>1,2,3,6</sup>

1 School of Life Sciences, Kyungpook National University, Daegu, Korea. 2 BK21 plus KNU Creative BioResearch Group, Kyungpook National University, Daegu, Korea. 3 Institute of Life Science & Biotechnology, Kyungpook National University, Daegu, Korea. 4 Neurodegeneration Control Research Center, Kyung Hee University, Seoul, Korea. 5 Department of Biochemistry & Molecular Biology, School of Medicine, Kyung Hee University, Seoul, Korea. 6 Brain Science and Engineering Institute, Kyungpook National University, Daegu, Korea.

There is an error in [Fig 2](#), “Induction of CNTF and CNTFR $\alpha$  by hRheb(S16H) transduction of dopaminergic neurons in the SN of rat brains.” Please see the corrected [Fig 2](#) and its legend here:

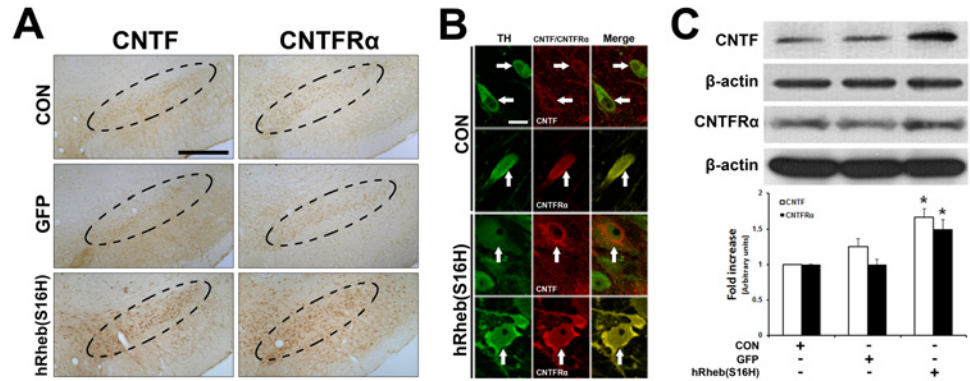


 OPEN ACCESS

**Citation:** The *PLOS ONE* Staff (2015) Correction: Activation of CNTF/CNTFR $\alpha$  Signaling Pathway by hRheb(S16H) Transduction of Dopaminergic Neurons *In Vivo*. *PLoS ONE* 10(4): e0126450. doi:10.1371/journal.pone.0126450

**Published:** April 17, 2015

**Copyright:** © 2015 The PLOS ONE Staff. This is an open access article distributed under the terms of the [Creative Commons Attribution License](#), which permits unrestricted use, distribution, and reproduction in any medium, provided the original author and source are credited.



**Fig 2. Induction of CNTF and CNTFR $\alpha$  by hRheb (S16H) transduction of dopaminergic neurons in the SN of rat brains.** (A) The increase in CNTF and CNTFR $\alpha$  expression by hRheb(S16H) transduction of dopaminergic neurons in the SN of rat brains. Inside areas of the dotted lines indicate the SNpc. CON indicates the non-injected control side. Scale bars, 250  $\mu$ m. (B) The increases in CNTF and CNTFR $\alpha$  expression in dopaminergic neurons by hRheb(S16H) transduction. White arrows indicate dopaminergic neurons (TH, green) merged with CNTF or CNTFR $\alpha$  (red) in the SN. Note that hRheb(S16H) transduction of dopaminergic neurons apparently increased the levels of CNTF and CNTFR $\alpha$  expression in dopaminergic neurons. Scale bar, 20  $\mu$ m. (C) Consistent with the immunostaining results, western blotting showed increased levels of CNTF and CNTFR $\alpha$  in the SN 4 weeks after AAV-hRheb(S16) treatment, compared with controls. The histogram results show a quantitative analysis of density of the CNTF and CNTFR $\alpha$  bands normalized to  $\beta$ -actin for each sample. All values are expressed as mean  $\pm$  SEM (\* $p$  < 0.01, significantly different from CON; One-way ANOVA and Tukey *post-hoc* analysis; n = 4, each group)

doi:10.1371/journal.pone.0126450.g001

## Reference

1. Jeong KH, Nam JH, Jin BK, Kim SR (2015) Activation of CNTF/CNTFR $\alpha$  Signaling Pathway by hRheb (S16H) Transduction of Dopaminergic Neurons *In Vivo*. PLoS ONE 10(3): e0121803. doi: [10.1371/journal.pone.0121803](https://doi.org/10.1371/journal.pone.0121803) PMID: [25799580](https://pubmed.ncbi.nlm.nih.gov/25799580/)