

Retrospective Study

Prognostic value of neutrophil distribution in cholangiocarcinoma

Zhi-Yuan Mao, Guang-Qing Zhu, Mei Xiong, Li Ren, Li Bai

Zhi-Yuan Mao, Guang-Qing Zhu, Department of Oncology, Air Force General Hospital of PLA, Beijing 100142, China
Mei Xiong, Department of Blood Transfusion, Air Force General Hospital of PLA, Beijing 100142, China
Li Ren, Department of Pathology, Air Force General Hospital of PLA, Beijing 100142, China
Li Bai, Department of Oncology, Chinese PLA General Hospital, Beijing 100853, China

Author contributions: Mao ZY contributed to the study conception and design, experimental research and data analysis, and manuscript preparation; Zhu GQ performed the clinical studies; Xiong M contributed to the literature search and data acquisition; Ren L performed the statistical analysis; Bai L revised the manuscript.

Open-Access: This article is an open-access article which was selected by an in-house editor and fully peer-reviewed by external reviewers. It is distributed in accordance with the Creative Commons Attribution Non Commercial (CC BY-NC 4.0) license, which permits others to distribute, remix, adapt, build upon this work non-commercially, and license their derivative works on different terms, provided the original work is properly cited and the use is non-commercial. See: <http://creativecommons.org/licenses/by-nc/4.0/>

Correspondence to: Dr. Zhi-Yuan Mao, Department of Oncology, Air Force General Hospital of PLA, No. 30 Fucheng Road, Haidian District, Beijing 100142, China. maozhiyuan666@163.com
Telephone: +86-10-66928571
Fax: +86-10-66928571

Received: October 19, 2014

Peer-review started: October 20, 2014

First decision: November 14, 2014

Revised: November 29, 2014

Accepted: January 21, 2015

Article in press: January 21, 2015

Published online: April 28, 2015

Abstract

AIM: To explore the relationship of clinicopathological features and the distribution of neutrophils in the tumor microenvironment with the prognosis of

cholangiocarcinoma.

METHODS: Two hundred and fifty-four formalin-fixed and paraffin embedded tissue blocks were analyzed, including tissues from cholangiocarcinoma ($n = 254$), and tumor adjacent tissues ($n = 238$). Tissue sections were stained for CD15 using immunohistochemical staining. CD15 expression was detected to identify the distribution of neutrophils in the local tumor microenvironment. The neutrophil density of the tumor tissues and the adjacent tumor tissues was detected to reflect their inflammatory status. Clinical data and follow-up information of cholangiocarcinoma patients who underwent surgery from January 2004 to December 2010 were analyzed retrospectively. The relationship between clinicopathological features and the distribution of neutrophils with prognosis of the patients were analyzed.

RESULTS: The positive expression level of CD15 was only significantly related to the TNM stage. CD15 expression was higher in tumor tissues than in adjacent tissues (73.6% vs 54.6%), with significant differences. Patients with high expression of CD15 had significantly shorter overall survival (OS) than those with low expression of CD15 (median overall survival time 39.77 mo vs 16.87 mo, $P = 0.008$). Patients with high CD15 expression had significantly shorter disease free survival time (DFS) than those with low expression of CD15 (median DFS 38.27 mo vs 16.83 mo, $P = 0.029$). COX multivariate analysis indicated that high CD15 expression in tumor tissues was an independent risk factor for predicting OS for patients with cholangiocarcinoma [$P = 0.012$, relative risk (RR) = 1.601], but it was not an independent risk factor for predicting DFS ($P = 0.073$, RR = 1.462).

CONCLUSION: Patients with high CD15 expression in cancer tissues had shorter DFS and OS. High expression of CD15 is an independent risk factor for OS.

Key words: Cholangiocarcinoma; Surgery; Neutrophils; CD15; Prognosis; Tumor microenvironment

© **The Author(s) 2015.** Published by Baishideng Publishing Group Inc. All rights reserved.

Core tip: Inflammation is the 7th important feature to promote tumor development. However, whether inflammation promotes tumor growth in cholangiocarcinoma remains unclear. This study analyzed the inflammation in the tumor microenvironment of the cholangiocarcinoma tissues, and further elaborated the mechanisms of inflammation in cholangiocarcinoma occurrence, development and metastasis, and provided new insights into the treatment of cholangiocarcinoma.

Mao ZY, Zhu GQ, Xiong M, Ren L, Bai L. Prognostic value of neutrophil distribution in cholangiocarcinoma. *World J Gastroenterol* 2015; 21(16): 4961-4968 Available from: URL: <http://www.wjgnet.com/1007-9327/full/v21/i16/4961.htm> DOI: <http://dx.doi.org/10.3748/wjg.v21.i16.4961>

INTRODUCTION

Cholangiocarcinoma originates from epithelial tumors. Diagnosis is often delayed, and prognosis is poor. Clinicians and scientists around the world are committed to determining the etiology of cholangiocarcinoma. Most cholangiocarcinomas are primary. Research from the United States and Europe^[1-4], found that hepatitis C is the most important risk factor for cholangiocarcinoma (intrahepatic cholangiocarcinoma in particular), but research from South Korea and China^[5-7] found that hepatitis B is a risk factor in intrahepatic cholangiocarcinoma. A study from Japan confirmed the results from Europe and the United States^[8]. These studies also confirmed that cirrhosis is a risk factor of cholangiocarcinoma. Primary sclerosing cholangitis may develop into cholangiocarcinoma (especially hilar cholangiocarcinoma), which is characterized by chronic inflammation complicated with liver damage and, possibly, the proliferation of progenitor cells. The incidence rate of cholangiocarcinoma among these patients is 5%-10%^[9-12]. Approximately 50% of the patients with primary sclerosing cholangitis were later diagnosed with cholangiocarcinoma within 24 mo^[9-13]. The average age of these patients is about 40 years old, while the average age of the general population who develop cholangiocarcinoma is about 70 years old^[4,14]. Although there are many risk factors that might promote the development of primary sclerosing cholangitis into cholangiocarcinoma, they are not sufficient to guide risk stratification for disease surveillance^[11,15,16]. A full understanding of the biological characteristics of cholangiocarcinoma and important factors that may affect treatment strategies, and implementation of standardized and

individualized treatment are the keys to the treatment of cholangiocarcinoma. The relationship between inflammation and cancer development has been the concern of many scholars, and this relationship is also the focus of the present study. In 2011, Hanahan *et al*^[17] in a review published in *Cell* proposed ten important features of malignant tumors, including self-sufficiency in growth signals, insensitivity to antigrowth signals, resisting cell death, limitless replicative potential, sustained angiogenesis, tissue invasion and metastasis, tumor promotion inflammation, avoiding immune destruction, deregulating cellular energetics, genome instability and mutation. Among these, the tumor-promoting inflammation represents the seventh most important feature. In the course of infection or injury repair, a large number of inflammatory cells *in vivo* aggregate and release large amounts of cytokines, chemokines, growth factors and cytotoxic mediators, forming a local inflammatory microenvironment. In the process of tumor formation, development and metastasis, cell death and appreciation would occur in a large number of cells, which would produce a large amount of inflammatory mediators. Tumor cells can also produce the factors released through accumulation of inflammatory cells, and these factors can lead to the formation of blood vessels and inflammatory responses. The persistent interactions of inflammatory mediators and cytokines in inflammatory cells lead to the long-term presence of a tumor inflammatory microenvironment, thereby promoting tumorigenesis, accelerating tumor development, and playing an important role in the various stages of tumor metastasis. Neutrophils are major inflammatory cells in the tumor microenvironment. CD15 is one of the markers of mature granulocytes. We used CD15 staining to evaluate the distribution of neutrophils in tumor microenvironment, and to explore the relationship of clinicopathological features and the neutrophil distribution in the tumor microenvironment with prognosis.

MATERIALS AND METHODS

Tumor tissues

Two hundred and ninety one resected specimens from patients who underwent operations for cholangiocarcinoma from January 2004 to December 2010 at the Department of General Surgery, General Hospital of Air Force, China, were analyzed retrospectively. Clinical data (including age, gender and tumor pathological features) were collected. The patients had a clear diagnosis of cholangiocarcinoma and had neither received radiotherapy or chemotherapy before surgery, nor preoperative liver transplantation. Those with a pathological diagnosis of sarcoma, mixed cell carcinoma or hepatocellular carcinoma were excluded. After surgery, all tissue samples were fixed in 4% formalin for 24 h, and then embedded in paraffin for hematoxylin and eosin (HE) and immunohistochemical

Table 1 Relationship between CD15 expression and clinicopathological characteristics in tumor tissues *n* (%)

Clinicopathological parameter	Group	<i>n</i>	CD15 expression in tumor tissues			
			High	Low	χ^2	<i>P</i> value
Age (yr)	< 60	119	92 (77.3)	27 (22.7)	1.569	0.210
	≥ 60	135	95 (70.4)	40 (29.6)		
Gender	Male	170	128 (75.3)	42 (24.7)	0.740	0.390
	Female	84	59 (70.2)	25 (29.8)		
Differentiation	Well differentiated	17	11 (64.7)	6 (35.3)	1.093	0.579
	Moderately differentiated	140	102 (72.9)	38 (27.1)		
	Poorly differentiated	97	74 (76.3)	23 (23.7)		
TNM stage	I	136	92 (67.6)	44 (32.4)	8.589	0.032
	II	71	54 (76.1)	17 (23.9)		
	III	34	31 (91.2)	3 (8.8)		
	IV	13	10 (76.9)	3 (23.1)		
Lymphatic metastasis	Metastasis	39	33 (84.6)	6 (15.4)	2.867	0.090
	No metastasis	215	154 (71.6)	61 (28.4)		
Neural invasion	Yes	82	56 (68.3)	26 (31.7)	1.771	0.183
	No	172	131 (76.2)	41 (23.8)		
Vascular invasion	Yes	14	10 (71.4)	4 (28.6)	0.037	0.765
	No	240	177 (73.8)	63 (26.2)		
Infiltration	Non-infiltrative	148	106 (71.6)	42 (28.4)	0.731	0.393
	Infiltrative	106	81 (76.4)	25 (23.6)		
Size	< 3 cm	138	95 (68.8)	43 (31.2)	3.557	0.059
	≥ 3 cm	116	92 (79.3)	24 (20.7)		
Edge	Positive	63	46 (73.0)	17 (27.0)	0.016	0.900
	Negative	191	141 (73.8)	50 (26.2)		
Position	Intrahepatic	69	52 (75.4)	17 (24.6)	0.148	0.701
	Extrahepatic	185	135 (73.0)	50 (27.0)		
Surgical approach	Radical	243	179 (73.7)	64 (26.3)	0.000	1.000
	Palliative	11	8 (72.7)	3 (27.3)		

TNM stage: Tumor node metastasis stage.

(IHC) staining. Sections were cut at 4 μ m. HE-stained samples were individually examined microscopically by two independent pathologists (Ren L and Mao ZY). The clinicopathological characteristics of the tumors are shown in Table 1.

IHC for CD15

Mouse anti-CD15 Monoclonal Antibody (ZM-0037, Working Solution, Zhongshan Golden Bridge Biotechnology Inc., Beijing, China) was used and heat-induced epitope retrieval (pressure cooker preheat for 5 min in citrate buffer, pH = 6) was used before to CD15 staining. Primary antibodies were then added and incubated for 2 h at 37 °C. Slides were processed on an immunostainer (LabVision Autostainer 360, Fujian, China). The primary antibody was replaced by phosphate-buffered saline as a negative control to assess the specificity of the antibodies. Hematoxylin-counterstained sections were mounted in aqueous mounting medium and observed under a light microscope.

The IHC staining (percentage of stained cells \times staining intensity) for CD15 was scored for each case after semi-quantitative evaluation by two independent pathologists (Ren L and Mao ZY). The percentage of stained cells observed in every 100 positive cells was used as the percentage of positive cells. Staining intensity was scored as negative (0), weak (1),

moderate (2), or strong (3). The final score of the specimen area were: percentage of positive cells \times staining intensity \times 100. The final score for each antibody in immunohistochemical staining ranged from 0 to 300 points. With the median score as a borderline, antibodies were assigned to a high expression group and a low expression group, and the median value was assigned to the high expression group.

Statistical analysis

SPSS19.0 statistical software was used for statistical analysis. A χ^2 test was used to compare rates, and Spearman's test was used for correlation analysis. Kaplan-Meier survival curves were used to calculate survival, the log-rank test was used for univariate analysis, and COX regression was adopted for multivariate survival analysis. A *P* value < 0.05 was considered statistically significant.

RESULTS

Expression of CD15 in tumor tissues and adjacent tissues

The expression of CD15 in the tumor tissues and adjacent tissues is presented in Table 2. CD15 staining in membrane and perinuclear granules is shown in Figure 1. The CD15 expression rate in tumor tissues was 73.6% (187/254), and was 54.6% in adjacent

Table 2 CD15 expression in tumor tissues and adjacent tissues

Group	n ¹	High CD15 expression	Low CD15 expression
Tumor tissues	254	187	67
Adjacent tissues	238	130	108

¹The number of cases is different from the previous because of off-chip effects during the dyeing process or no tumor tissue.

tissues (130/238). CD15 expression in tumor tissues was higher than in adjacent tissues ($P = 0.000$).

Correlations between CD15 expression levels and clinicopathological characteristics of tumors

The correlations between CD15 expression and clinicopathological features are shown in Table 3. The positive expression rate of CD15 was significantly related to the TNM stage (Figure 2).

Correlation between CD15 expression in tumor tissues and prognosis

Patients with high expression of CD15 had significantly shorter overall survival (OS) than those with low expression, and the difference was statistically significant ($P = 0.008$). Patients with high CD15 expression had significantly shorter disease free survival time (DFS) than those with low CD15 expression ($P = 0.029$). Based on COX multivariate analysis, high CD15 expression in cancer tissues was an independent risk factor in predicting OS for patients with cholangiocarcinoma [$P = 0.012$, relative risk (RR) = 1.601]. Univariate analysis showed that patients with high CD15 expression in tumor tissues had significantly shorter progression-free survival and overall survival than those with low expression, and the difference was statistically significant (median DFS: 38.37 mo vs 16.83 mo; median OS: 39.77 mo vs 16.87 mo, $P = 0.029$ and 0.008 , respectively), as shown in Figures 3 and 4.

Multivariate analysis in CD15 expression and prognosis of patients with cholangiocarcinoma

The clinical and pathological features of patients with cholangiocarcinoma were analyzed using univariate analysis, and the statistically significant results obtained and CD15 levels were then included in COX multivariate analysis to observe the effects of the indicators on prognosis. As shown in Table 3, high CD15 expression in tumor tissues is an independent risk factor for OS of the patients with cholangiocarcinoma, and patients with high CD15 expression in tumor tissues had a 1.601 times higher risk of death compared with patients with low CD15 expression.

DISCUSSION

Although inflammation is a risk factor for the onset

of cholangiocarcinoma, the mechanism is not fully understood. Many experiments found that the relationship between a tumor and inflammation can be studied based on the local inflammatory tumor microenvironment, and a systemic inflammatory response. For example, C-reactive protein and IL-6 are considered to reflect the level of markers of systemic inflammation. Increased levels can predict the prognosis of various tumors, and the higher the level of the inflammation, the worse the prognosis^[18,19]. Coincident with our results, Jensen *et al*^[20] reported that the presence of intratumoral neutrophils was an independent prognostic factor for poor OS following nephrectomy in localized clear cell tumors, such as renal cell carcinoma. Li *et al*^[21] confirmed recently that intratumoral neutrophils were a poor prognostic factor for hepatocellular carcinoma following resection. Furthermore, elevated neutrophil and monocyte counts in peripheral blood are associated with poor survival in patients with metastatic melanoma^[22,23], small-cell lung carcinoma^[24], gastric cancer^[25-27] and other tumors^[28]. All these studies indicated that patients with tumors infiltrating neutrophils have a poor prognosis, which may offer some help in a preliminary clinical prognosis of cancer patients, and provide clues for treatment.

CD15 is a specific marker of neutrophils^[29]. The white blood cell count is an important index in the detection of inflammation *in vivo*. Inflammation can promote tumor angiogenesis, growth and invasion^[30-32]. Neutrophils account for 50%-70% of total circulating leukocytes^[33,34]. Neutrophils are the most abundant white blood cells, which help the body against invading microorganisms. Therefore, the number of neutrophils is an important inflammatory marker. Currently the neutrophil-to-lymphocyte ratio is studied extensively, and the ratio is used to assess the overall survival of cancer patients as a simple and effective indicator. A higher ratio indicates a poor overall survival, and a risk of early relapse^[35-37]; thus, an increased neutrophil count and CD15 expression. This study analyzed the effects of CD15 expression in local inflammatory status on DFS and OS, and found that CD15 expression in cancer tissues was significantly higher than in the adjacent tissues. By univariate analysis, CD15 expression in cancer tissues affected significantly the DFS and OS, and high CD15 expression in cancer tissues predicted higher risk of tumor recurrence and mortality. CD15 is a primary marker for neutrophils, high CD15 expression indicates increased neutrophil count and reduced lymphocyte count. The release of large amounts of cytokines and other inflammatory cytokines may contribute to an increase in tumor metastasis and tumor angiogenesis^[38-43]. Therefore, the CD15 expression in cancer tissues suggested poor prognosis in this study, which is consistent with the findings mentioned above. CD15 positive neutrophils may predict poor prognosis, especially for the prediction of OS, but not for DFS. However, prediction of OS could help in the treatment of postoperative

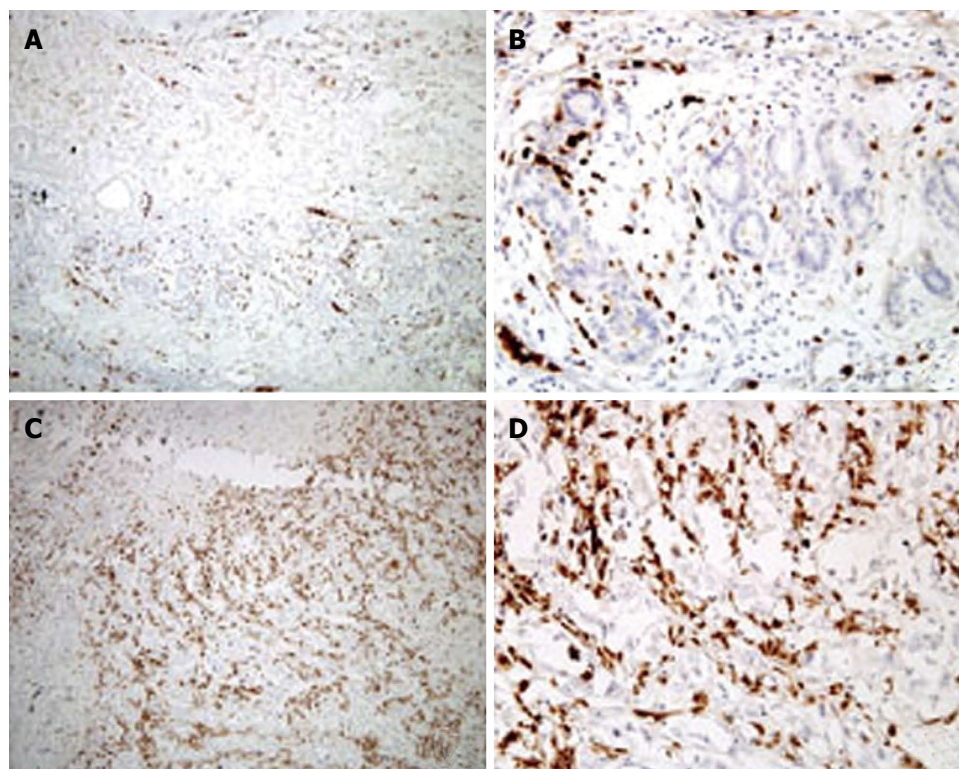


Figure 1 Immunophenotypes of the investigated antigens in tumor tissues. CD15 staining in membrane and perinuclear granules. A: Low CD15 expression, magnification × 100; B: Low CD15 expression, magnification × 400; C: High CD15 expression, magnification × 100; D: High CD15 expression, magnification × 400.

Table 3 Multivariate survival analysis of CD15 expression in cancer tissues and clinicopathological features

Parameters	Risk of recurrence				Risk of death			
	P value	Exp(B)	95%CI for Exp(B)		P value	Exp(B)	95%CI for Exp(B)	
			Lower	Upper			Lower	Upper
Differentiation	0.004	1.545	1.148	2.079	0.007	1.43	1.103	1.853
TNM stage	0.001	1.535	1.185	1.989	0.013	1.324	1.061	1.652
Lymphatic metastasis	0.854	0.952	0.562	1.611	0.114	1.427	0.918	2.217
Neural invasion	0.532	1.134	0.764	1.684	0.827	1.039	0.736	1.468
Vascular invasion	0.227	0.594	0.255	1.382	0.965	0.986	0.523	1.859
Infiltration	0.742	0.928	0.595	1.448	0.585	1.112	0.759	1.63
Size	0.943	1.014	0.692	1.487	0.758	0.949	0.679	1.326
Edge	0.014	1.014	0.692	1.487	0.007	1.641	1.148	2.347
Position	0.551	0.859	0.521	1.416	0.466	0.849	0.546	1.319
Surgical approach	0.575	1.258	0.564	2.804	0.161	1.62	0.826	3.178
CD15	0.073	1.462	0.965	2.215	0.012	1.601	1.107	2.314

TNM: Tumor node metastasis.

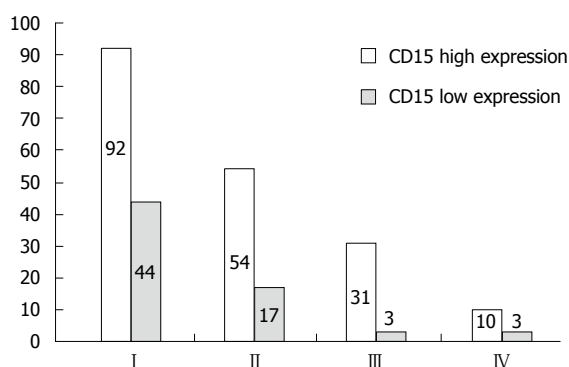


Figure 2 Histogram of the correlation between CD15 expression in tumor tissues and tumor node metastasis staging. TNM: Tumor node metastasis.

cholangiocarcinoma, and CD15 immunohistochemical staining results could predict the survival of patients earlier, such that intervention can be started earlier, which would extend the survival of patients.

This study used inflammation-related prognostic indicators to predict the prognosis of patients with cholangiocarcinoma. The local inflammatory status in the tumor microenvironment was evaluated by CD15 immunohistochemical staining. The results were scored to detect the distribution of cholangiocarcinoma inflammatory cells in the tumor microenvironment and to analyze the correlation between the distribution of cholangiocarcinoma inflammatory cells in the tumor microenvironment and local inflammation and

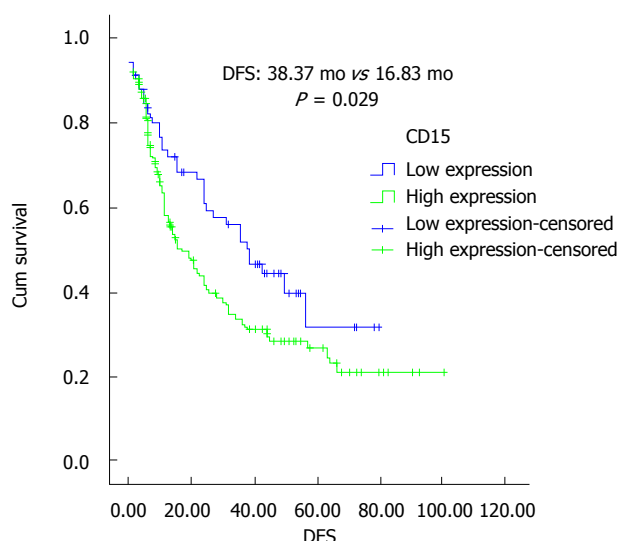


Figure 3 CD15 expression in tumor tissues and disease free survival time. DFS: Disease free survival time.

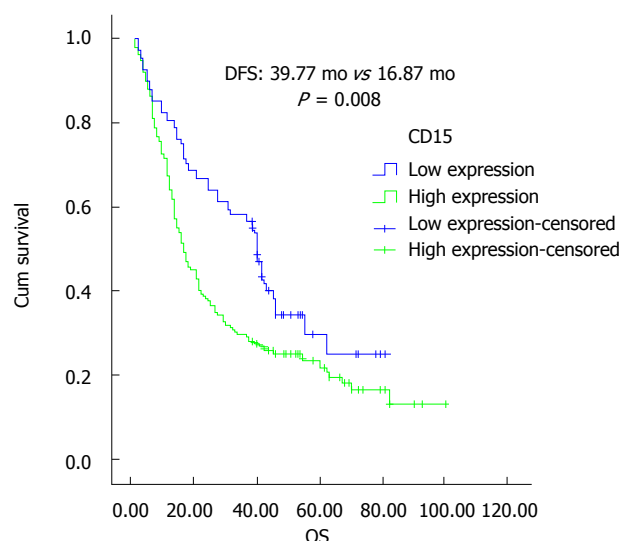


Figure 4 CD15 expression in tumor tissues and overall survival. OS: overall survival.

prognosis, to reflect the relationship between inflammation and cholangiocarcinoma.

There are currently no approved targeted agents for cholangiocarcinoma^[44]. However, drug-related genes have been detected, including KRAS, PIK3CA, MET, EGFR, BRAF and NRAS^[45]. In some cholangiocarcinomas, gene mutations occur, but targeted therapy is still not effective, possibly because cholangiocarcinoma gene mutation is relatively complex, involving mutations of two or more genes^[46]. Yoshikawa *et al*^[47] used Vandetanib to treat cholangiocarcinoma and inhibit both VEGFR and EGFR signalling appears a promising therapeutic approach for cholangiocarcinoma. The absence of KRAS mutation and the presence of EGFR amplification may be potential predictive molecular markers of sensitivity to EGFR-targeted therapy in cholangiocarcinoma.

El-Khoueiry *et al*^[48] used Sorafenib in two clinical studies for unresectable or metastatic gallbladder carcinoma and cholangiocarcinoma treatment, but did not achieve objective responses. Patients with biliary cancers receiving this drug showed some therapeutic benefit. Additional studies with Sorafenib in combination with chemotherapy or other targeted agents may be warranted. Takahashi *et al*^[49] suggested that Axitinib is a promising therapy for vascular endothelial growth factor-expressing cholangiocarcinoma, irrespective of tumor origin and Gemcitabine sensitivity. El-Khoueiry *et al*^[50] reported that Sorafenib and Erlotinib did not have promising clinical activities in an unselected population of patients with biliary cancers. Improved patient selection, based on tumor biology and molecular markers, is critical for future evaluation of targeted therapies in this disease. Based on several promising phase II clinical trials currently underway, the most promising targeted agents for cholangiocarcinoma thus far include anti-EGFR agents, MEK inhibitors and anti-angiogenic agents^[44].

In summary, distribution of local inflammatory cells in patients with cholangiocarcinoma in the tumor microenvironment is valuable to assess prognosis. The local inflammatory state, in varying degrees, reflects the *in vivo* state of chronic inflammation in patients with malignant tumors. The chronic inflammatory state and the resulting immune status deserve further study and are meaningful for subsequent treatment of cancers. These results indicate that neutrophil distribution in various cancers might indicate poor prognosis and may serve as a target for clinical treatment.

COMMENTS

Background

Cholangiocarcinoma accounts for 3% of all gastrointestinal tumors and is the second most common tumor in hepatobiliary cancers. A full understanding of the biological characteristics of cholangiocarcinoma and the adoption standardized, individualized treatment are the key to cholangiocarcinoma treatment. Clinicians and scientists around the world are committed to determining the etiology of cholangiocarcinoma to permit early diagnosis and treatment of cholangiocarcinoma. This study investigated the inflammatory cell distribution in the tumor microenvironment and further elaborated the mechanisms of inflammation in cholangiocarcinoma occurrence, development and metastasis, to provide new insights into the treatment of cholangiocarcinoma.

Research frontiers

In this study, the authors investigated the expression of CD15 by immunohistochemical (IHC) staining to examine inflammatory state of cholangiocarcinoma. The results are helpful to understand the occurrence, development and metastasis of cholangiocarcinoma.

Innovations and breakthroughs

In this study, the authors explored the expression of CD15 to reflect inflammatory state of cholangiocarcinoma: the expression of CD15 had been seldom detected in cholangiocarcinoma. The results could help explain the occurrence, development and metastasis of cholangiocarcinoma.

Applications

IHC staining of CD15 to mark neutrophils and to reflect the inflammation caused by cholangiocarcinoma is a fast, convenient and economical method in clinical applications.

Terminology

Cholangiocarcinoma originates from epithelial tumors. Diagnosis is often

delayed and prognosis is poor. Cholangiocarcinoma accounts for 3% of all gastrointestinal cancers, and is the second most common tumor in hepatobiliary cancers.

Peer-review

The authors conducted an IHC analysis of CD15 to assess the neutrophil distribution and to further reflect the inflammatory state of cholangiocarcinoma. The study is very interesting.

REFERENCES

- 1 **Welzel TM**, Mellekjaer L, Gloria G, Sakoda LC, Hsing AW, El Ghormli L, Olsen JH, McGlynn KA. Risk factors for intrahepatic cholangiocarcinoma in a low-risk population: a nationwide case-control study. *Int J Cancer* 2007; **120**: 638-641 [PMID: 17109384 DOI: 10.1002/ijc.22283]
- 2 **Donato F**, Gelatti U, Tagger A, Favret M, Ribero ML, Callea F, Martelli C, Savio A, Trevisi P, Nardi G. Intrahepatic cholangiocarcinoma and hepatitis C and B virus infection, alcohol intake, and hepatolithiasis: a case-control study in Italy. *Cancer Causes Control* 2001; **12**: 959-964 [PMID: 11808716 DOI: 10.1023/A:1013747228572]
- 3 **El-Serag HB**, Engels EA, Landgren O, Chiao E, Henderson L, Amaratunge HC, Giordano TP. Risk of hepatobiliary and pancreatic cancers after hepatitis C virus infection: A population-based study of U.S. veterans. *Hepatology* 2009; **49**: 116-123 [PMID: 19085911 DOI: 10.1002/hep.22606]
- 4 **Shaib YH**, El-Serag HB, Davila JA, Morgan R, McGlynn KA. Risk factors of intrahepatic cholangiocarcinoma in the United States: a case-control study. *Gastroenterology* 2005; **128**: 620-626 [PMID: 15765398]
- 5 **Lee TY**, Lee SS, Jung SW, Jeon SH, Yun SC, Oh HC, Kwon S, Lee SK, Seo DW, Kim MH, Suh DJ. Hepatitis B virus infection and intrahepatic cholangiocarcinoma in Korea: a case-control study. *Am J Gastroenterol* 2008; **103**: 1716-1720 [PMID: 18557716 DOI: 10.1111/j.1572-0241.2008.01796.x]
- 6 **Zhou YM**, Yin ZF, Yang JM, Li B, Shao WY, Xu F, Wang YL, Li DQ. Risk factors for intrahepatic cholangiocarcinoma: a case-control study in China. *World J Gastroenterol* 2008; **14**: 632-635 [PMID: 18203300 DOI: 10.3748/wjg.14.632]
- 7 **Sekiya S**, Suzuki A. Intrahepatic cholangiocarcinoma can arise from Notch-mediated conversion of hepatocytes. *J Clin Invest* 2012; **122**: 3914-3918 [PMID: 23023701 DOI: 10.1172/JCI63065]
- 8 **Yamamoto S**, Kubo S, Hai S, Uenishi T, Yamamoto T, Shuto T, Takemura S, Tanaka H, Yamazaki O, Hirohashi K, Tanaka T. Hepatitis C virus infection as a likely etiology of intrahepatic cholangiocarcinoma. *Cancer Sci* 2004; **95**: 592-595 [PMID: 15245596 DOI: 10.1111/j.1349-7006.2004.tb02492.x]
- 9 **Chapman MH**, Webster GJ, Bannoo S, Johnson GJ, Wittmann J, Pereira SP. Cholangiocarcinoma and dominant strictures in patients with primary sclerosing cholangitis: a 25-year single-centre experience. *Eur J Gastroenterol Hepatol* 2012; **24**: 1051-1058 [PMID: 22653260 DOI: 10.1097/MEG.0b013e3283554bbf]
- 10 **Bergquist A**, Ekbom A, Olsson R, Kornfeldt D, Lööf L, Danielsson A, Hultcrantz R, Lindgren S, Prytz H, Sandberg-Gertzén H, Almer S, Granath F, Broomé U. Hepatic and extrahepatic malignancies in primary sclerosing cholangitis. *J Hepatol* 2002; **36**: 321-327 [PMID: 11867174 DOI: 10.1016/S0168-8278(01)00288-4]
- 11 **Chapman R**, Fevery J, Kalloo A, Nagorney DM, Boberg KM, Shneider B, Gores GJ. Diagnosis and management of primary sclerosing cholangitis. *Hepatology* 2010; **51**: 660-678 [PMID: 20101749 DOI: 10.1002/hep.23294]
- 12 **Claessen MM**, Vleggaar FP, Tytgat KM, Siersema PD, van Buuren HR. High lifetime risk of cancer in primary sclerosing cholangitis. *J Hepatol* 2009; **50**: 158-164 [PMID: 19012991 DOI: 10.1016/j.jhep.2008.08.013]
- 13 **Boberg KM**, Bergquist A, Mitchell S, Pares A, Rosina F, Broomé U, Chapman R, Fausa O, Egeland T, Rocca G, Schruppf E. Cholangiocarcinoma in primary sclerosing cholangitis: risk factors and clinical presentation. *Scand J Gastroenterol* 2002; **37**: 1205-1211 [PMID: 12408527 DOI: 10.1080/003655202760373434]
- 14 **Tyson GL**, El-Serag HB. Risk factors for cholangiocarcinoma. *Hepatology* 2011; **54**: 173-184 [PMID: 21488076 DOI: 10.1002/hep.24351]
- 15 **European Association for the Study of the Liver**. EASL Clinical Practice Guidelines: management of cholestatic liver diseases. *J Hepatol* 2009; **51**: 237-267 [PMID: 19501929 DOI: 10.1016/j.jhep.2009.04.009]
- 16 **Razumilava N**, Gores GJ, Lindor KD. Cancer surveillance in patients with primary sclerosing cholangitis. *Hepatology* 2011; **54**: 1842-1852 [PMID: 21793028 DOI: 10.1002/hep.24570]
- 17 **Hanahan D**, Weinberg RA. Hallmarks of cancer: the next generation. *Cell* 2011; **144**: 646-674 [PMID: 21376230 DOI: 10.1016/j.cell.2011.02.013]
- 18 **Hashimoto K**, Ikeda Y, Korenaga D, Tanoue K, Hamatake M, Kawasaki K, Yamaoka T, Iwatani Y, Akazawa K, Takenaka K. The impact of preoperative serum C-reactive protein on the prognosis of patients with hepatocellular carcinoma. *Cancer* 2005; **103**: 1856-1864 [PMID: 15779015 DOI: 10.1002/encr.20976]
- 19 **Porta C**, De Amici M, Quaglino S, Paglino C, Tagliani F, Boncimino A, Moratti R, Corazza GR. Circulating interleukin-6 as a tumor marker for hepatocellular carcinoma. *Ann Oncol* 2008; **19**: 353-358 [PMID: 17962206 DOI: 10.1093/annonc/mdn290]
- 20 **Jensen HK**, Donskov F, Marcussen N, Nordmark M, Lundbeck F, von der Maase H. Presence of intratumoral neutrophils is an independent prognostic factor in localized renal cell carcinoma. *J Clin Oncol* 2009; **27**: 4709-4717 [PMID: 19720929 DOI: 10.1200/JCO.2008.18.9498]
- 21 **Li YW**, Qiu SJ, Fan J, Zhou J, Gao Q, Xiao YS, Xu YF. Intratumoral neutrophils: a poor prognostic factor for hepatocellular carcinoma following resection. *J Hepatol* 2011; **54**: 497-505 [PMID: 21112656 DOI: 10.1016/j.jhep.2010.07.044]
- 22 **Hughes-Benzie RM**, Hunter AG, Allanson JE, Mackenzie AE. Simpson-Golabi-Behmel syndrome associated with renal dysplasia and embryonal tumor: localization of the gene to Xqcen-q21. *Am J Med Genet* 1992; **43**: 428-435 [PMID: 1605222 DOI: 10.1038/sj.bjcg.6602702]
- 23 **Schmidt H**, Suciou S, Punt CJ, Gore M, Kruit W, Patel P, Lienard D, von der Maase H, Eggermont AM, Keilholz U. Pretreatment levels of peripheral neutrophils and leukocytes as independent predictors of overall survival in patients with American Joint Committee on Cancer Stage IV Melanoma: results of the EORTC 18951 Biochemotherapy Trial. *J Clin Oncol* 2007; **25**: 1562-1569 [PMID: 17443000 DOI: 10.1200/JCO.2006.09.0274]
- 24 **Paesmans M**, Sculier JP, Lecomte J, Thiriaux J, Libert P, Sergysels R, Bureau G, Dabouis G, Van Cutsem O, Mommen P, Ninane V, Klastersky J. Prognostic factors for patients with small cell lung carcinoma: analysis of a series of 763 patients included in 4 consecutive prospective trials with a minimum follow-up of 5 years. *Cancer* 2000; **89**: 523-533 [PMID: 10931451 DOI: 10.1002/1097-0142]
- 25 **Jung MR**, Park YK, Jeong O, Seon JW, Ryu SY, Kim DY, Kim YJ. Elevated preoperative neutrophil to lymphocyte ratio predicts poor survival following resection in late stage gastric cancer. *J Surg Oncol* 2011; **104**: 504-510 [PMID: 21618251 DOI: 10.1002/jso.21986]
- 26 **Shimada H**, Takiguchi N, Kainuma O, Soda H, Ikeda A, Cho A, Miyazaki A, Gunji H, Yamamoto H, Nagata M. High preoperative neutrophil-lymphocyte ratio predicts poor survival in patients with gastric cancer. *Gastric Cancer* 2010; **13**: 170-176 [PMID: 20820986 DOI: 10.1007/s10120-010-0554-3]
- 27 **Yamanaka T**, Matsumoto S, Teramukai S, Ishiwata R, Nagai Y, Fukushima M. The baseline ratio of neutrophils to lymphocytes is associated with patient prognosis in advanced gastric cancer. *Oncology* 2007; **73**: 215-220 [PMID: 18424885 DOI: 10.1159/000127412]
- 28 **Donskov F**. Immunomonitoring and prognostic relevance of neutrophils in clinical trials. *Semin Cancer Biol* 2013; **23**: 200-207 [PMID: 23403174 DOI: 10.1016/j.semcancer.2013.02.001]
- 29 **Kerr MA**, Stocks SC. The role of CD15-(Le(X))-related carbohydrates in neutrophil adhesion. *Histochem J* 1992; **24**:

- 811-826 [PMID: 1362195 DOI: 10.1007/BF01046353]
- 30 **de Visser KE**, Korets LV, Coussens LM. De novo carcinogenesis promoted by chronic inflammation is B lymphocyte dependent. *Cancer Cell* 2005; **7**: 411-423 [PMID: 15894262 DOI: 10.1016/j.ccr.2005.04.014]
- 31 **Coussens LM**, Werb Z. Inflammation and cancer. *Nature* 2002; **420**: 860-867 [PMID: 12490959 DOI: 10.1038/nature01322]
- 32 **Daniel D**, Chiu C, Giraudo E, Inoue M, Mizzen LA, Chu NR, Hanahan D. CD4+ T cell-mediated antigen-specific immunotherapy in a mouse model of cervical cancer. *Cancer Res* 2005; **65**: 2018-2025 [PMID: 15753402 DOI: 10.1158/0008-5472.CAN-04-3444]
- 33 **Strell C**, Lang K, Niggemann B, Zaenker KS, Entschladen F. Neutrophil granulocytes promote the migratory activity of MDA-MB-468 human breast carcinoma cells via ICAM-1. *Exp Cell Res* 2010; **316**: 138-148 [PMID: 19747913 DOI: 10.1016/j.yexcr.2009.09.003]
- 34 **Queen MM**, Ryan RE, Holzer RG, Keller-Peck CR, Jorcyk CL. Breast cancer cells stimulate neutrophils to produce oncostatin M: potential implications for tumor progression. *Cancer Res* 2005; **65**: 8896-8904 [PMID: 16204061 DOI: 10.1158/0008-5472.CAN-05-1734]
- 35 **Bertuzzo VR**, Cescon M, Ravaioli M, Grazi GL, Ercolani G, Del Gaudio M, Cucchetti A, D'Errico-Grigioni A, Golfieri R, Pinna AD. Analysis of factors affecting recurrence of hepatocellular carcinoma after liver transplantation with a special focus on inflammation markers. *Transplantation* 2011; **91**: 1279-1285 [PMID: 21617590 DOI: 10.1097/TP.0b013e3182187ef0]
- 36 **Huang ZL**, Luo J, Chen MS, Li JQ, Shi M. Blood neutrophil-to-lymphocyte ratio predicts survival in patients with unresectable hepatocellular carcinoma undergoing transarterial chemoembolization. *J Vasc Interv Radiol* 2011; **22**: 702-709 [PMID: 21514523 DOI: 10.1016/j.jvir.2010.12.041]
- 37 **Chen TM**, Lin CC, Huang PT, Wen CF. Neutrophil-to-lymphocyte ratio associated with mortality in early hepatocellular carcinoma patients after radiofrequency ablation. *J Gastroenterol Hepatol* 2012; **27**: 553-561 [PMID: 21913982 DOI: 10.1111/j.1440-1746.2011.06910.x]
- 38 **Nozawa H**, Chiu C, Hanahan D. Infiltrating neutrophils mediate the initial angiogenic switch in a mouse model of multistage carcinogenesis. *Proc Natl Acad Sci USA* 2006; **103**: 12493-12498 [PMID: 16891410 DOI: 10.1073/pnas.0601807103]
- 39 **Ardi VC**, Kupriyanova TA, Deryugina EI, Quigley JP. Human neutrophils uniquely release TIMP-free MMP-9 to provide a potent catalytic stimulator of angiogenesis. *Proc Natl Acad Sci USA* 2007; **104**: 20262-20267 [PMID: 18077379 DOI: 10.1073/pnas.0706438104]
- 40 **Shojaei F**, Singh M, Thompson JD, Ferrara N. Role of Bv8 in neutrophil-dependent angiogenesis in a transgenic model of cancer progression. *Proc Natl Acad Sci USA* 2008; **105**: 2640-2645 [PMID: 18268320 DOI: 10.1073/pnas.0712185105]
- 41 **Nathan C**. Neutrophils and immunity: challenges and opportunities. *Nat Rev Immunol* 2006; **6**: 173-182 [PMID: 16498448 DOI: 10.1038/nri1785]
- 42 **Benelli R**, Albini A, Noonan D. Neutrophils and angiogenesis: potential initiators of the angiogenic cascade. *Chem Immunol Allergy* 2003; **83**: 167-181 [PMID: 12947984 DOI: 10.1159/000071560]
- 43 **Bergers G**, Brekken R, McMahon G, Vu TH, Itoh T, Tamaki K, Tanzawa K, Thorpe P, Itohara S, Werb Z, Hanahan D. Matrix metalloproteinase-9 triggers the angiogenic switch during carcinogenesis. *Nat Cell Biol* 2000; **2**: 737-744 [PMID: 11025665 DOI: 10.1038/35036374]
- 44 **Faris JE**, Zhu AX. Targeted therapy for biliary tract cancers. *J Hepatobiliary Pancreat Sci* 2012; **19**: 326-336 [PMID: 22318523 DOI: 10.1007/s00534-011-0496-0]
- 45 **Voss JS**, Holtegaard LM, Kerr SE, Fritcher EG, Roberts LR, Gores GJ, Zhang J, Highsmith WE, Halling KC, Kipp BR. Molecular profiling of cholangiocarcinoma shows potential for targeted therapy treatment decisions. *Hum Pathol* 2013; **44**: 1216-1222 [PMID: 23391413 DOI: 10.1016/j.humpath.2012.11.006]
- 46 **Andersen JB**, Spee B, Blechacz BR, Avital I, Komuta M, Barbour A, Conner EA, Gillen MC, Roskams T, Roberts LR, Factor VM, Thorgeirsson SS. Genomic and genetic characterization of cholangiocarcinoma identifies therapeutic targets for tyrosine kinase inhibitors. *Gastroenterology* 2012; **142**: 1021-1031.e15 [PMID: 22178589 DOI: 10.1053/j.gastro.2011.12.005]
- 47 **Yoshikawa D**, Ojima H, Kokubu A, Ochiya T, Kasai S, Hirohashi S, Shibata T. Vandetanib (ZD6474), an inhibitor of VEGFR and EGFR signalling, as a novel molecular-targeted therapy against cholangiocarcinoma. *Br J Cancer* 2009; **100**: 1257-1266 [PMID: 19319137 DOI: 10.1038/sj.bjc.6604988]
- 48 **El-Khoueiry AB**, Rankin CJ, Ben-Josef E, Lenz HJ, Gold PJ, Hamilton RD, Govindarajan R, Eng C, Blanke CD. SWOG 0514: a phase II study of sorafenib in patients with unresectable or metastatic gallbladder carcinoma and cholangiocarcinoma. *Invest New Drugs* 2012; **30**: 1646-1651 [PMID: 21748296 DOI: 10.1007/s10637-011-9719-0]
- 49 **Takahashi H**, Ojima H, Shimizu H, Furuse J, Furukawa H, Shibata T. Axitinib (AG-013736), an oral specific VEGFR TKI, shows potential therapeutic utility against cholangiocarcinoma. *Jpn J Clin Oncol* 2014; **44**: 570-578 [PMID: 24755544 DOI: 10.1093/jcco/hyu045]
- 50 **El-Khoueiry AB**, Rankin C, Siegel AB, Iqbal S, Gong IY, Micetich KC, Kayaleh OR, Lenz HJ, Blanke CD. S0941: a phase 2 SWOG study of sorafenib and erlotinib in patients with advanced gallbladder carcinoma or cholangiocarcinoma. *Br J Cancer* 2014; **110**: 882-887 [PMID: 24423918 DOI: 10.1038/bjc.2013.801]

P- Reviewer: Schmelzle M S- Editor: Yu J L- Editor: Stewart GJ
E- Editor: Ma S





Published by **Baishideng Publishing Group Inc**

8226 Regency Drive, Pleasanton, CA 94588, USA

Telephone: +1-925-223-8242

Fax: +1-925-223-8243

E-mail: bpgooffice@wjgnet.com

Help Desk: <http://www.wjgnet.com/esps/helpdesk.aspx>

<http://www.wjgnet.com>



ISSN 1007-9327



9 771007 932045