

# Microbial community transcriptional networks are conserved in three domains at ocean basin scales

Frank O. Aylward<sup>a</sup>, John M. Eppley<sup>a</sup>, Jason M. Smith<sup>b</sup>, Francisco P. Chavez<sup>b</sup>, Christopher A. Scholin<sup>b</sup>, and Edward F. DeLong<sup>a,c,d,1</sup>

<sup>a</sup>Daniel K. Inouye Center for Microbial Oceanography Research and Education (C-MORE), University of Hawaii at Manoa, Honolulu, HI 96822; <sup>b</sup>Monterey Bay Aquarium Research Institute, Moss Landing, CA 95039; <sup>c</sup>Department of Civil and Environmental Engineering, Massachusetts Institute of Technology, Cambridge, MA 02139; and <sup>d</sup>Department of Biological Engineering, Massachusetts Institute of Technology, Cambridge, MA 02139

Contributed by Edward F. DeLong, February 13, 2015 (sent for review December 17, 2014; reviewed by Jeffrey I. Gordon, Curtis Huttenhower, and Thomas Schmidt)

Planktonic microbial communities in the ocean are typically dominated by several cosmopolitan clades of *Bacteria*, *Archaea*, and *Eukarya* characterized by their ribosomal RNA gene phylogenies and genomic features. Although the environments these communities inhabit range from coastal to open ocean waters, how the biological dynamics vary between such disparate habitats is not well known. To gain insight into the differential activities of microbial populations inhabiting different oceanic provinces we compared the daily metatranscriptome profiles of related microbial populations inhabiting surface waters of both a coastal California upwelling region (CC) as well as the oligotrophic North Pacific Subtropical Gyre (NPSG). Transcriptional networks revealed that the dominant photoautotrophic microbes in each environment (*Ostreococcus* in CC, *Prochlorococcus* in NPSG) were central determinants of overall community transcriptome dynamics. Furthermore, heterotrophic bacterial clades common to both ecosystems (SAR11, SAR116, SAR86, SAR406, and *Roseobacter*) displayed conserved, genome-wide inter- and intrataxon transcriptional patterns and diel cycles. Populations of SAR11 and SAR86 clades in particular exhibited tightly coordinated transcriptional patterns in both coastal and pelagic ecosystems, suggesting that specific biological interactions between these groups are widespread in nature. Our results identify common diurnally oscillating behaviors among diverse planktonic microbial species regardless of habitat, suggesting that highly conserved temporally phased biotic interactions are ubiquitous among planktonic microbial communities worldwide.

microbial oceanography | transcriptional networks | bacterioplankton | systems biology | diel cycles

Understanding the relationships between microbial community dynamics and ecosystem processes remains a central goal of microbial ecology (1–4). Such linkages are beginning to be explored in ocean surface waters, where a relatively small number of broadly-defined phylogenetic groups from all three domains of life dominate planktonic microbial communities worldwide (5–7). Both culture-dependent and -independent studies are increasing our knowledge of the metabolic properties and ecological dynamics of individual clades (3, 6, 8), yet it remains largely unknown how these microorganisms interact with one other and their environment to shape whole-ecosystem processes and biogeochemical fluxes.

Although the in situ dynamics of planktonic microbial assemblages have typically been difficult to evaluate, recent development in Lagrangian robotic sampling coupled with subsequent metatranscriptomic sequencing have allowed for daily whole-community temporal dynamics to be assessed (9–12). These techniques use an Environmental Sample Processor (ESP) that autonomously collects and preserves environmental samples while floating freely with a planktonic assemblage (12). Using these approaches it is now possible to evaluate not only the activities of individual microbial populations but also the temporal dynamics that define

their ecological niches. Moreover, comparison of the temporal dynamics between microbial lineages and analysis of shared intertaxon metabolic patterns permits investigation into the factors that give rise to ecosystem-level phenomena, and how these factors may vary between environments.

In this study we used a comparative approach to identify common temporal features among phylogenetically related planktonic groups that inhabit drastically disparate marine environments. Our analysis leveraged a five-day, high-resolution metatranscriptomic time-series from surface waters off the northern California coast (CC) (this report), together with a metatranscriptomic time series constructed from surface waters of the North Pacific Subtropical Gyre (NPSG) (9). Although many phylogenetically similar microbes inhabit these environments, the two ecosystems are environmentally distinct. Waters of the California Current waters experience marked seasonality, are much colder, and are relatively nutrient rich compared with the NPSG (13), which is characterized by warmer, nutrient poor surface waters with little seasonal variability (14). High temporal resolution, whole-community metatranscriptome time series from microbial populations inhabiting these environments offered a unique opportunity to compare microbial community dynamics in these different oceanic provinces.

## Significance

Microbes drive biogeochemical cycles across the globe, collectively playing a central role in shaping the biosphere. Despite their immense importance, the in situ activities of communities of microbes, in particular uncultivated lineages of “microbial dark matter,” remain poorly elucidated. In this study, we report that common temporal and ecological dynamics underpin disparate marine microbial communities, providing the first evidence that trans-Pacific diurnal transcriptional patterns in these communities may regulate ecological and biogeochemical processes across the ocean. In total, our findings indicate a remarkable regularity in the timing of community-wide activity in the ocean, and suggest that global patterns of a variety of biogeochemical transformations may be temporally predictable and governed by structured ecological determinants.

Author contributions: F.O.A., F.P.C., C.A.S., and E.F.D. designed research; F.O.A., J.M.E., and E.F.D. performed research; C.A.S. contributed new reagents/analytic tools; F.O.A., J.M.E., J.M.S., F.P.C., C.A.S., and E.F.D. analyzed data; and F.O.A. and E.F.D. wrote the paper.

Reviewers: J.I.G., Washington University School of Medicine in St. Louis; C.H., Harvard School of Public Health; and T.S., University of Michigan.

The authors declare no conflict of interest.

Freely available online through the PNAS open access option.

Data deposition: The sequence reported in this paper has been deposited in the NCBI Sequence Read Archive database (accession no. [SRP050269](https://doi.org/10.1093/bioinformatics/btt526)).

<sup>1</sup>To whom correspondence should be addressed. Email: [edelong@hawaii.edu](mailto:edelong@hawaii.edu).

This article contains supporting information online at [www.pnas.org/lookup/suppl/doi:10.1073/pnas.1502883112/-DCSupplemental](http://www.pnas.org/lookup/suppl/doi:10.1073/pnas.1502883112/-DCSupplemental).

## Results and Discussion

As expected, different photoautotrophic primary producers dominated the coastal versus open ocean metatranscriptomes (*Ostreococcus* in CC and *Prochlorococcus* in NPSG) (15–17) (*SI Appendix, Fig. S1 A and B* and *Dataset S3*). In contrast, many dominant heterotrophic bacterioplankton clades were common to community transcripts in both habitats, including the SAR11, SAR86, SAR116, SAR406, and *Roseobacter* groups (*SI Appendix, Fig. S1 A and B*). We also identified populations of Flavobacteria, Marine Group II (MGII) Euryarchaeota, SAR92 and ARCTIC96-BD19 in the new coastal dataset, and a previously reported SAR324 population in the pelagic samples (Table 1 and *SI Appendix, Fig. S1 A and B*) (9). Mapping of reads onto reference genomes (95% identity, minimum 150 bp match length) indicated the overall phylogenetic profiles for the coastal and pelagic metatranscriptomes were largely non-overlapping (*SI Appendix, Fig. S2*), suggesting that although common heterotrophic clades were shared between the two habitats, their population-level genotypes were distinct. During the California coast drift, the relative abundance of reads assigned to *Ostreococcus* and MGII Euryarchaeota declined, whereas those assigned to Flavobacteria, SAR92, and ARCTIC96-BD19 increased. These changes were concomitant with increases in salinity and fluctuations in temperature (*SI Appendix, Fig. S1C*), potentially indicating movement of the ESP through distinct water masses. Similar albeit less severe variability in temperature and salinity was observed in the NPSG drift, although transcript abundance across phylogenetic groups was more stable in this dataset (*SI Appendix, Fig. S1 B and D*).

We analyzed the temporal dynamics of reads mapping to 8,844 and 7,276 orthologous protein clusters (henceforth referred to as “transcripts”) with high abundance in the coastal and pelagic metatranscriptomes, respectively, and compared the daily transcriptional patterns within and between different phylogenetic groups using a weighted transcriptomic network approach as implemented by the WGCNA package (18, 19) (*Methods*). Results of these analyses suggested that the majority of transcripts in both the coastal and pelagic transcriptomic networks clustered around the transcripts derived from the dominant photoautotrophic members of each community (Fig. 1 *A* and *D*). Moreover, *Ostreococcus* (CC) and *Prochlorococcus* (NPSG) transcripts were found to consistently have the highest connectivity (a.k.a. degree centrality) of all nodes in the networks (Fig. 2*A* and *Dataset S1*), likely reflecting the central role of photoautotrophic community members in determining the overall community transcriptional profiles in both environments. Analysis of sets of transcripts with similar temporal profiles (termed modules; colored groupings in Fig. 1 *B* and *E*) revealed distinct patterns of 24-h periodic expression (Fig. 1 *C* and *F*), consistent with the underlying structuring of the transcriptomic networks around the well defined diel cycles of the photoautotrophic members.

All transcriptional modules identified within weighted networks (34 in CC, 18 in NPSG) included representative transcripts from numerous phylogenetic groups, indicating that similar, highly regular transcriptional coordination was shared between microbial populations (*SI Appendix, Fig. S3*). Moreover, each module contained a broad representation of functional annotations both within and between taxa, reflecting coordinated regulation across metabolic pathways in different phylogenetic groups (*SI Appendix, Figs. S4 and S5*). Transcripts from different taxa involved in cofactor and vitamin metabolism and DNA processing often clustered in the same modules, as did those involved in oxidative phosphorylation and protein and RNA processing (*SI Appendix, Figs. S4 and S5*). Analysis of the functional annotation of transcripts across phylogenetic groups revealed that amino acid metabolism, DNA processing, translation, transporters, and vitamin metabolism consistently had the

**Table 1. Summary of the California coast and North Pacific Subtropical Gyre metatranscriptomes**

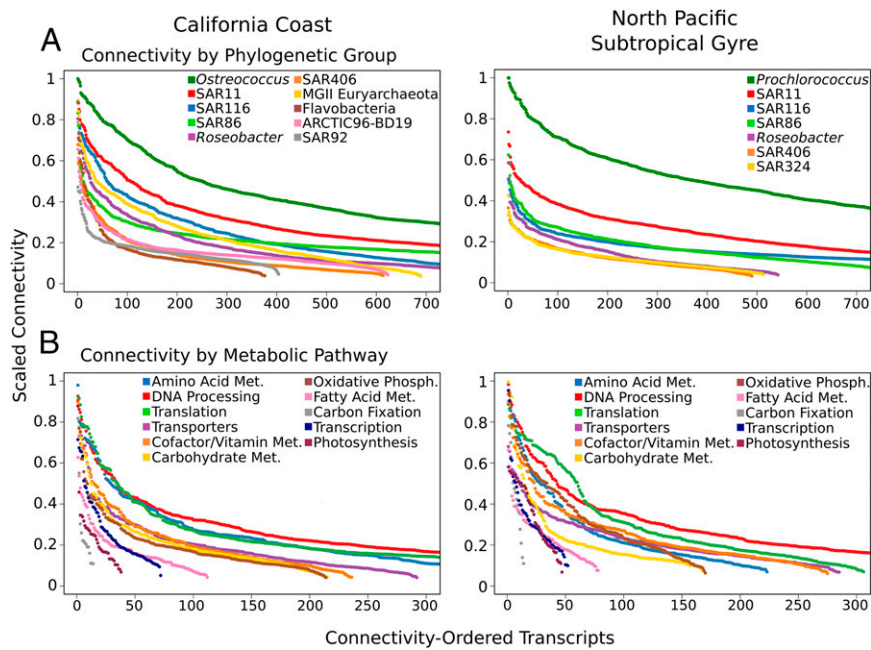
Parameter	California coast	North Pacific Subtropical Gyre
Time points	35	30
Approx. sampling frequency	4 h	2 h
Duration of drift	9/12–17, 2012 (5 1/2 d)	9/7–11, 2011 (2 1/2 d)
No. of transcripts*		
ARCTIC96-BD19	623 (50)	—
Flavobacteria	376 (1)	—
GII Euryarchaeota	689 (34)	—
<i>Roseobacter</i>	867 (99)	542 (165)
<i>Ostreococcus</i>	1,602 (781)	—
<i>Prochlorococcus</i>	—	2,052 (1,464)
SAR11	1,300 (296)	1,223 (270)
SAR86	1,400 (31)	795 (39)
SAR92	404 (2)	—
SAR116	969 (146)	1,661 (146)
SAR324	—	513 (28)
SAR406	615 (0)	490 (17)

\*Total number of transcripts (those with significant 24-h periodicity).

highest connectivity, indicating that these are potentially among the most tightly regulated metabolic processes (Fig. 2*B*). This pattern could be the result of intense competition for resources in both coastal and pelagic surface waters, which would render nutrient availability and the timing of growth and DNA replication as key determinants of the temporal dynamics in these planktonic assemblages. The abundance and connectivity of transcripts appeared to be associated in the pelagic but not coastal datasets (*SI Appendix, Fig. S6*), possibly reflecting a propensity of central metabolic genes critical for cellular processes to be highly expressed, consistent with previous findings (20). These patterns may also be due in part to a tendency for connectivity patterns to be more easily identified in highly expressed transcripts, although a lack of connectivity-abundance association in the coastal dataset suggests this is not an overriding factor. Together with the high connectivity of transcripts belonging to photoautotrophic groups, these results suggest that transcriptomic networks of both coastal and pelagic environments are largely structured by a combination of the diel cycles of the photoautotrophic members together with resource limitation common to both habitats.

In addition to shared, intrahabitat community-wide metatranscriptome dynamics, similar transcriptional patterns were also observed *between* the heterotrophic bacterioplankton of coastal and pelagic environments. Using the transcriptomic networks as a foundation, we calculated the correlation of nodes belonging to the two photoautotrophic groups and five shared heterotrophic clades across different metabolic pathways (Fig. 3). We found that patterns of intertaxa co-correlation in the coastal and pelagic metatranscriptomes mirrored each other, with close coordination across similar metabolic pathways in the related heterotrophic populations of both ecosystems. This was particularly apparent for the SAR11 and SAR86 populations, which in both environments displayed tightly linked transcriptional profiles across a variety of functions including translation, transcription, and oxidative phosphorylation (Fig. 3). A similar but less apparent relationship was also found between the SAR116 and *Roseobacter* clades in both habitats (Fig. 3). In contrast, although SAR116 transcription patterns appear closely linked to *Ostreococcus* in the California coast, a similar relationship between SAR116 and *Prochlorococcus* was not observed in pelagic samples, suggesting

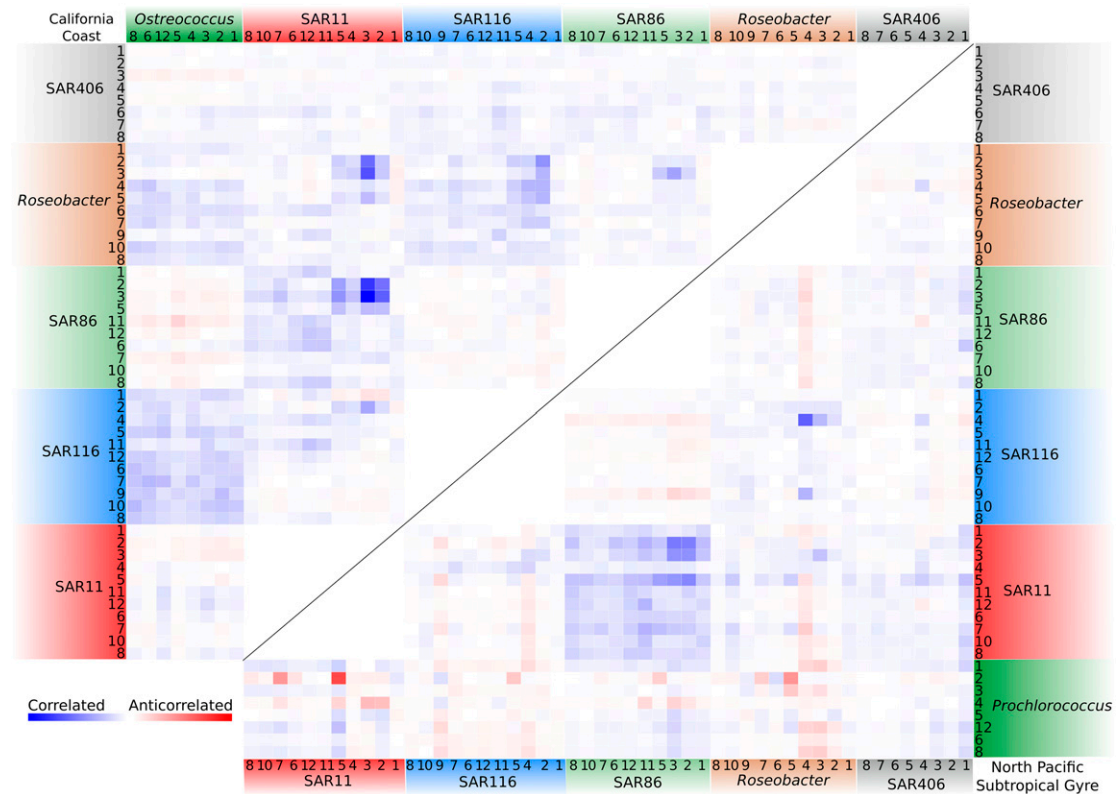




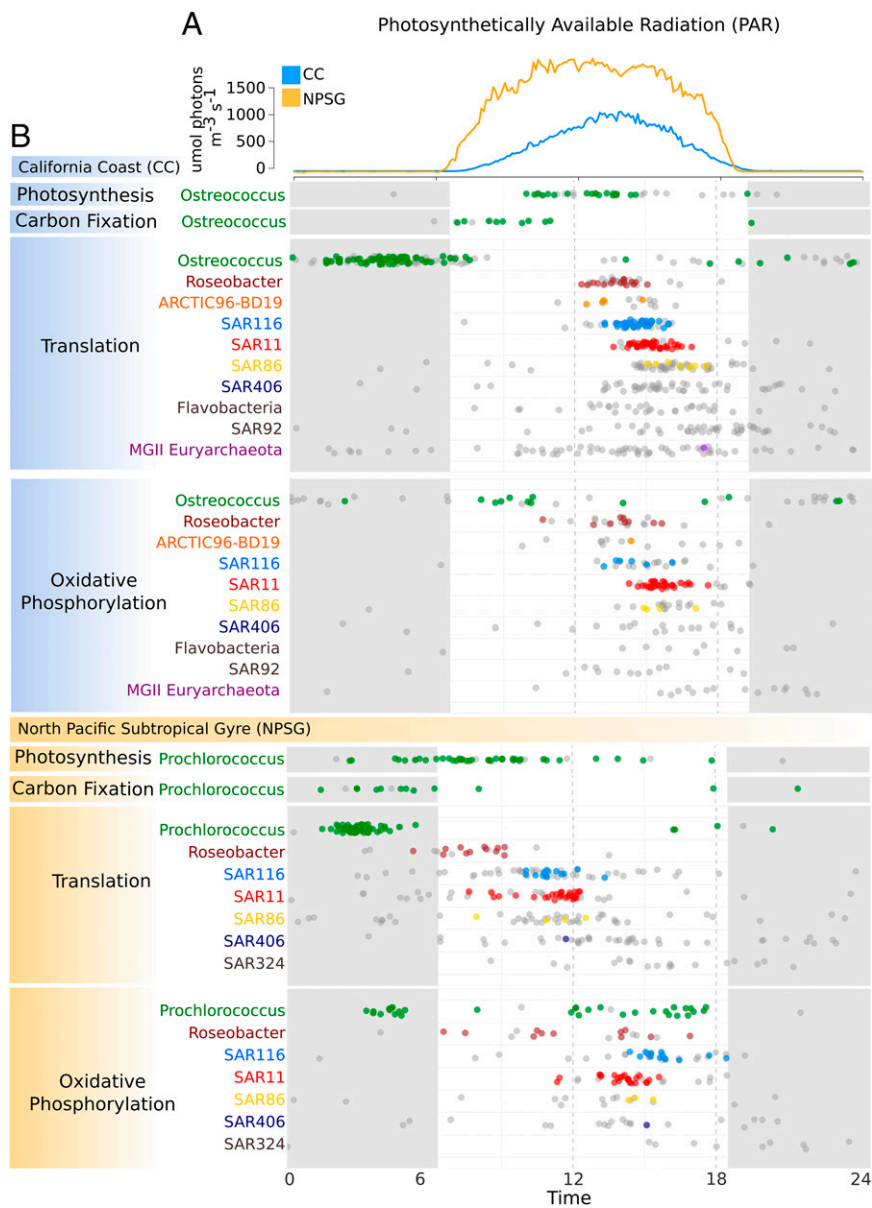
**Fig. 2.** Transcripts from both the California coast and NPSG metatranscriptomes belonging to photoautotrophic community members (**A**) and those involved in key metabolic processes such as amino acid metabolism, DNA processing, and translation (**B**) have the highest connectivity (degree centrality) in transcriptional networks. The scaled connectivity (degree centrality) of transcripts is given on the y-axes, with transcripts ordered highest to lowest based on taxonomic assignment and KEGG annotation. Met: Metabolism; Phosph.: Phosphorylation.

groups, the same transcriptional modules that contained the most translation and oxidative phosphorylation transcripts (9 and 15 in CC, 3 in NPSG) also contained a number of transcripts

belonging to predicted sugar and amino acid transporters, peptidases, and genes involved in amino acid metabolism and the citric acid cycle (*SI Appendix, Figs. S4 and S5 and Dataset S1*),



**Fig. 3.** Patterns of interspecies transcriptional coordination are conserved across coastal and pelagic planktonic microbial communities. Correlated and anticorrelated functional pathways in the photoautotrophic and shared heterotrophic groups are shown for the California coast (CC, *Upper Left*) and North Pacific Subtropical Gyre (NPSG, *Lower Right*) metatranscriptomes. Pathway correlations were calculated from scaled adjacency matrixes by averaging across the correlations of the cognate transcripts (*Methods*). Pathways: 1: Transporters; 2: Translation; 3: Transcription; 4: Protein/RNA processing; 5: Oxidative phosphorylation; 6: Cofactor and vitamin metabolism; 7: Citrate cycle; 8: Amino acid metabolism; 9: Chemotaxis and flagellar assembly; 10: Central carbon metabolism; 11: Glycolysis; 12: DNA and chromosome processing.



**Fig. 4.** Community-wide transcriptional cascades in key metabolic processes are conserved in the coastal and pelagic planktonic microbial communities sampled. Timing on the x-axis is given over a 24-h interval using data aggregated throughout the sampling periods. Photosynthetically Available Radiation profiles averaged over the duration of the ESP drifts (PAR, A) and metabolic transcriptional profiles calculated using harmonic regression in the California coast (B, in blue) and NPSG (B, in orange) planktonic groups are given. Colored dots represent the peak times of transcripts with statistically significant 24-h periodicity, whereas gray dots represent the peak times of transcripts without a significant diel component to their expression. Nighttime periods are indicated with gray shading.

suggesting that an increase in the availability of certain compounds in marine dissolved organic matter (DOM) may spur their transcriptional upsurges. Supporting this hypothesis, distinct transcriptional responses to elevated DOM have been shown to occur in heterotrophic bacterioplankton studied in microcosm experiments (22). Given that *Ostreococcus* and *Prochlorococcus* likely produce distinct suites of dissolved organic matter (23), this would suggest that the temporal succession of microbial activity may exist regardless of the specific compounds involved.

Metabolic patterns in heterotrophic groups could also be inferred from other pathways. In particular, reads mapping to the glyoxylate shunt enzymes isocitrate lyase and malate synthase were highly abundant in both metatranscriptomes (SI Appendix, Fig. S7), consistent with findings that this pathway plays a key role in carbon provisioning in bacterioplankton (24). Overall, transcripts mapping to ribosomal proteins, oxidative phosphorylation enzymes, and diverse transporters were relatively more abundant in coastal than pelagic SAR11, SAR116, SAR86, SAR406, and *Roseobacter* populations (Mann–Whitney  $U$  Test,

$P < 0.005$ ) (SI Appendix, Fig. S8 and Dataset S2), likely reflecting the higher nutrient availabilities in the coastal system. In contrast, transcripts mapping to proteins involved in light stress attenuation (photo-lyases), free radical detoxification (catalase, peroxiredoxins, thioredoxins), photoactive damage of coenzymes (biotin sulfoxide reductase), and heat shock in all of these same groups were more highly expressed in pelagic than coastal populations (SI Appendix, Fig. S8). These results are consistent with the higher solar radiation and temperatures that typify surface waters of the NPSG, supporting the recently recognized importance of heterotrophic free radical detoxification processes in this ecosystem (25, 26). Transcripts involved in phosphonate uptake were also enriched in pelagic versus coastal SAR11 and SAR116 populations (Dataset S2), reflecting their importance as a source of phosphate in oligotrophic environments (27, 28).

Significant progress has been made over the past decades in characterizing the phylogenetic diversity of eukaryotic, bacterial and archaeal groups inhabiting the world's oceans (3, 29, 30), but the in situ metabolic activities and interactions of these groups that combine to create cohesive, resilient community structure

and ecosystem-level processes remain largely undetermined. The extraordinary similarity of transcriptional temporal dynamics and coordination that is shared between microbial populations of disparate marine ecosystems as shown here illustrates the importance of short-term temporal interactions in defining the ecological niches of microbial plankton. Moreover, the rapid turnover of nutrients in the upper ocean (14, 31) together with the observed commonalities in whole-community diel cycles among all three domains of life in these disparate habitats implies that biogeochemical fluxes mediated by microbial community metabolism are diurnally phased across entire ocean basins. Identifying the precise mechanisms and metabolic fluxes that regulate the specific microbial interactions giving rise to whole-community metabolism is a major challenge for microbial oceanography in the future. Our findings underscore the importance of gaining deeper mechanistic perspective into the tightly coordinated ecosystem-level dynamics that orchestrate daily biogeochemical fluxes, and how they may respond in the face of rapid anthropogenic environmental change.

## Materials and Methods

**ESP Deployment and Sample Collection.** For our coastal metatranscriptomes, samples were collected by an Environmental Sample Processor (ESP) (12) suspended at a depth of 10 m from September 12–17, 2012 off the coast of California near Monterey (initial deployment:  $-122.7^{\circ}\text{W}$ ,  $36.4^{\circ}\text{N}$ ). As previously described, planktonic microbial assemblages were collected in the 0.22–5  $\mu\text{m}$  size range at 4-h intervals and preserved aboard the ESP (10, 12). Filter samples collected by the ESPs were stored at  $-80^{\circ}\text{C}$  within 24 h of their retrieval. RNA was extracted, cDNA was generated, and Illumina sequencing

(32) was performed as described (33–35). Details regarding sequence processing and classification can be found in the Supplementary Appendix. Sequences generated in this study have been deposited in the NCBI Sequence Read Archive under accession number SRP050269. Collection and processing of the NPSG samples has been described (9).

**Transcriptomic Network Analyses.** For both the coastal and pelagic metatranscriptomes reads were mapped to ortholog clusters of proteins constructed from the phylogenetic groups of interest, and a weighted transcriptomic network approach using the R packages WGCNA and igraph was used to analyze the resulting count tables. Details regarding the soft thresholds used in network construction, the calculation of adjacency matrices, and the partitioning of transcripts into modules can be found in *SI Appendix*.

**ACKNOWLEDGMENTS.** We thank B. Barone, D. Mende, T. Nielsen, T. Palden, A. Romano, S. Wilson, and members of the E.F.D. laboratory for helpful comments, J. Robidart for collecting seawater samples for rRNA subtraction-probe construction, and E. Ottesen for sharing R code. This work was supported by grants from the Gordon and Betty Moore Foundation (to E.F.D., 3777), National Science Foundation Grant EF0424599 (to E.F.D.), and the Simons Foundation grant Simons Collaboration on Ocean Processes and Ecology (SCOPE) (to E.F.D.). Development and application of the Environmental Sample Processor has been supported by National Science Foundation Grant OCE-0314222, National Aeronautics and Space Administration Astrobiology Grants NNG06GB34G and NNX09AB78G, the Gordon and Betty Moore Foundation (to C.A.S., 2728), and the David and Lucile Packard Foundation (to C.A.S., 901204, 901205). The cruise in the California Current was part of the MBARI CANON initiative and supported by the David and Lucile Packard Foundation (to F.P.C.; 901009). This work is a contribution of the Center for Microbial Oceanography: Research and Education (C-MORE) and the Simons Collaboration on Ocean Processes and Ecology (SCOPE).

- Azam F, Malfatti F (2007) Microbial structuring of marine ecosystems. *Nat Rev Microbiol* 5(10):782–791.
- Fuhrman JA (2009) Microbial community structure and its functional implications. *Nature* 459(7244):193–199.
- Zinger L, Gobet A, Pommier T (2012) Two decades of describing the unseen majority of aquatic microbial diversity. *Mol Ecol* 21(8):1878–1896.
- Yokokawa T, Nagata T (2010) Linking bacterial community structure to carbon fluxes in marine environments. *J Oceanogr* 66(1):1–12.
- Giovannoni SJ, Rappe MM (2000) Evolution, diversity, and molecular ecology of marine prokaryotes. *Microbial Ecology of the Oceans*, ed Kirchman DL (Wiley-Liss, New York, NY), 1st Ed, pp 47–85.
- Giovannoni SJ, Stingl U (2005) Molecular diversity and ecology of microbial plankton. *Nature* 437(7057):343–348.
- DeLong EF, Karl DM (2005) Genomic perspectives in microbial oceanography. *Nature* 437(7057):336–342.
- DeLong EF (2009) The microbial ocean from genomes to biomes. *Nature* 459(7244):200–206.
- Ottesen EA, et al. (2014) Ocean microbes. Multispecies diel transcriptional oscillations in open ocean heterotrophic bacterial assemblages. *Science* 345(6193):207–212.
- Ottesen EA, et al. (2011) Metatranscriptomic analysis of autonomously collected and preserved marine bacterioplankton. *ISME J* 5(12):1881–1895.
- Ottesen EA, et al. (2013) Pattern and synchrony of gene expression among sympatric marine microbial populations. *Proc Natl Acad Sci USA* 110(6):E488–E497.
- Scholin CA, et al. (2009) Remote detection of marine microbes, small invertebrates, harmful algae and biotoxins using the Environmental Sample Processor (ESP). *Oceanography (Wash DC)* 22:158–167.
- Chavez FP, Messié M (2009) A comparison of Eastern Boundary Upwelling Ecosystems. *Prog Oceanogr* 83(1–4):80–96.
- Karl DM, Church MJ (2014) Microbial oceanography and the Hawaii Ocean Time-series programme. *Nat Rev Microbiol* 12(10):699–713.
- Partensky F, Hess WR, Vaulot D (1999) *Prochlorococcus*, a marine photosynthetic prokaryote of global significance. *Microbiol Mol Biol Rev* 63(1):106–127.
- Campbell L, Vaulot D (1993) Photosynthetic picoplankton community structure in the subtropical North Pacific Ocean near Hawaii (station ALOHA). *Deep Sea Res Part Oceanogr Res Pap* 40(10):2043–2060.
- Demir-Hilton E, et al. (2011) Global distribution patterns of distinct clades of the photosynthetic picoeukaryote *Ostreococcus*. *ISME J* 5(7):1095–1107.
- Zhang B, Horvath S (2005) A general framework for weighted gene co-expression network analysis. *Stat Appl Genet Mol Biol* 4(1):e17.
- Langfelder P, Horvath S (2008) WGCNA: An R package for weighted correlation network analysis. *BMC Bioinformatics* 9(1):559.
- Stewart FJ, Sharma AK, Bryant JA, Eppley JM, DeLong EF (2011) Community transcriptomics reveals universal patterns of protein sequence conservation in natural microbial communities. *Genome Biol* 12(3):R26.
- Gifford SM, Sharma S, Moran MA (2014) Linking activity and function to ecosystem dynamics in a coastal bacterioplankton community. *Front Microbiol* 5. Available at: [journal.frontiersin.org/Journal/10.3389/fmicb.2014.00185/full](http://journal.frontiersin.org/Journal/10.3389/fmicb.2014.00185/full) [Accessed October 11, 2014].
- Sharma AK, et al. (2014) Distinct dissolved organic matter sources induce rapid transcriptional responses in coexisting populations of *Prochlorococcus*, *Pelagibacter* and the OM60 clade. *Environ Microbiol* 16(9):2815–2830.
- Becker JW, et al. (2014) Closely related phytoplankton species produce similar suites of dissolved organic matter. *Front Microbiol* 5:111.
- Palvaara J, et al. (2014) Stimulation of growth by proteorhodopsin phototrophy involves regulation of central metabolic pathways in marine planktonic bacteria. *Proc Natl Acad Sci USA* 111(35):E3650–E3658.
- Morris JJ, Lenski RE, Zinser ER (2012) The Black Queen Hypothesis: Evolution of dependencies through adaptive gene loss. *MBio* 3(2):e00036–e12.
- Morris JJ, Johnson ZI, Szul MJ, Keller M, Zinser ER (2011) Dependence of the cyanobacterium *Prochlorococcus* on hydrogen peroxide scavenging microbes for growth at the ocean's surface. *PLoS ONE* 6(2):e16805.
- Karl DM, et al. (2008) Aerobic production of methane in the sea. *Nat Geosci* 1(7):473–478.
- Metcalf WW, et al. (2012) Synthesis of methylphosphonic acid by marine microbes: A source for methane in the aerobic ocean. *Science* 337(6098):1104–1107.
- Pace NR (1997) A molecular view of microbial diversity and the biosphere. *Science* 276(5313):734–740.
- Temperton B, Giovannoni SJ (2012) Metagenomics: Microbial diversity through a scratched lens. *Curr Opin Microbiol* 15(5):605–612.
- Karl DM (2002) Nutrient dynamics in the deep blue sea. *Trends Microbiol* 10(9):410–418.
- Bennett S (2004) Solexa Ltd. *Pharmacogenomics* 5(4):433–438.
- Stewart FJ, Ottesen EA, DeLong EF (2010) Development and quantitative analyses of a universal rRNA-subtraction protocol for microbial metatranscriptomics. *ISME J* 4(7):896–907.
- Frias-Lopez J, et al. (2008) Microbial community gene expression in ocean surface waters. *Proc Natl Acad Sci USA* 105(10):3805–3810.
- Shi Y, Tyson GW, Eppley JM, DeLong EF (2011) Integrated metatranscriptomic and metagenomic analyses of stratified microbial assemblages in the open ocean. *ISME J* 5(6):999–1013.