

## Fiber and prebiotic supplementation in enteral nutrition: A systematic review and meta-analysis

Mazuin Kamarul Zaman, Kin-Fah Chin, Vineya Rai, Hazreen Abdul Majid

Mazuin Kamarul Zaman, Hazreen Abdul Majid, Department of Social and Preventive Medicine, Faculty of Medicine, University of Malaya, Kuala Lumpur 50603, Malaysia

Kin-Fah Chin, Department of Surgery, Faculty of Medicine, Universiti Malaya, Kuala Lumpur 50603, Malaysia

Vineya Rai, Department of Anaesthesiology, Faculty of Medicine, Universiti Malaya, Kuala Lumpur 50603, Malaysia

**Author contributions:** Kamarul Zaman M and Majid HA analyzed the data, and drafted and wrote the paper; Chin KF, Rai V and Majid HA designed the study and revised the manuscript; all authors approved the final version submitted for publication.

**Supported by** The University of Malaya Research Grant (No. PG127-2013A, No. UMRP022A-14HTM and No. UMRG 388-11HTM).

**Conflict-of-interest:** The authors declare that they have no conflicts of interest.

**Data sharing:** No additional data are available.

**Open-Access:** This article is an open-access article which was selected by an in-house editor and fully peer-reviewed by external reviewers. It is distributed in accordance with the Creative Commons Attribution Non Commercial (CC BY-NC 4.0) license, which permits others to distribute, remix, adapt, build upon this work non-commercially, and license their derivative works on different terms, provided the original work is properly cited and the use is non-commercial. See: <http://creativecommons.org/licenses/by-nc/4.0/>

**Correspondence to:** Hazreen Abdul Majid, PhD, Department of Social and Preventive Medicine, Faculty of Medicine, University of Malaya, Kuala Lumpur 50603,

Malaysia. [hazreen.abdulmajid@gmail.com](mailto:hazreen.abdulmajid@gmail.com)

Telephone: +60-37-9674757

Fax: +60-37-9674975

Received: October 24, 2014

Peer-review started: October 25, 2014

First decision: November 14, 2014

Revised: December 7, 2014

Accepted: January 30, 2015

Article in press: January 30, 2015

Published online: May 7, 2015

of enteral nutrition (EN) for diarrhea, fecal microbiota and short-chain fatty acids (SCFAs).

**METHODS:** MEDLINE, EMBASE, Cochrane Library, CINAHL, Academic Search Premier, and Web of Science databases were searched for human experimental and observational cohort studies conducted between January 1990 and June 2014. The keywords used for the literature search were fiber, prebiotics and enteral nutrition. English language studies with adult patient populations on exclusive EN were selected. Abstracts and/or full texts of selected studies were reviewed and agreed upon by two independent researchers for inclusion in the meta-analysis. Tools used for the quality assessment were Jadad Scale and the Scottish Intercollegiate Guidelines Network Critical Appraisal of the Medical Literature.

**RESULTS:** A total of 456 possible articles were retrieved, and 430 were excluded due to lack of appropriate data. Of the 26 remaining studies, only eight investigated the effects of prebiotics. Results of the meta-analysis indicated that overall, fiber reduces diarrhea in patients receiving EN (OR = 0.47; 95%CI: 0.29-0.77;  $P = 0.02$ ). Subgroup analysis revealed a positive effect of fiber supplementation in EN towards diarrhea in stable patients (OR = 0.31; 95%CI: 0.19-0.51;  $P < 0.01$ ), but not in critically ill patients (OR = 0.89; 95%CI: 0.41-1.92;  $P = 0.77$ ). Prebiotic supplementation in EN does not improve the incidence of diarrhea despite its manipulative effect on bifidobacteria concentrations and SCFA in healthy humans. In addition, the effect of fiber and/or prebiotic supplementation towards fecal microbiota and SCFA remain disputable.

**CONCLUSION:** Fiber helps minimize diarrhea in patients receiving EN, particularly in non-critically ill patients. However, the effect of prebiotics in moderating diarrhea is inconclusive.

### Abstract

**AIM:** To investigate fiber and prebiotic supplementation

**Key words:** Bifidobacteria; Diarrhea; Enteral nutrition; Fiber; Prebiotics; Short-chain fatty acids

© The Author(s) 2015. Published by Baishideng Publishing Group Inc. All rights reserved.

**Core tip:** Despite the importance of enteral nutrition (EN) for patients, diarrhea is a common complication in those receiving EN. Meta-analysis conducted in this review revealed that fiber supplementation in EN reduces diarrhea incidence. However, the positive effect is only seen in stable patients, and is not observed in critically ill patients. In addition, the effect of fiber and prebiotic supplementation towards fecal microbiota and short-chain fatty acids remain disputable due to the mixed findings. The heterogeneity of study populations, antibiotics therapies, and variation of the dosage for fiber and prebiotics likely explain such outcomes.

Kamarul Zaman M, Chin KF, Rai V, Majid HA. Fiber and prebiotic supplementation in enteral nutrition: A systematic review and meta-analysis. *World J Gastroenterol* 2015; 21(17): 5372-5381 Available from: URL: <http://www.wjgnet.com/1007-9327/full/v21/i17/5372.htm> DOI: <http://dx.doi.org/10.3748/wjg.v21.i17.5372>

## INTRODUCTION

Enteral nutrition (EN) is a beneficial support given to patients who are malnourished or at risk for malnutrition *via* oral nutritional supplements or tube feeding. Provision of nutrition through EN helps to maintain gut function by preventing mucosal atrophy<sup>[1]</sup>, reducing endotoxin translocation<sup>[2]</sup>, and preserving gut immunity<sup>[3]</sup>. However, despite its importance, diarrhea remains a common complication, affecting 2%-95% of patients who consume EN<sup>[4]</sup>, with a higher incidence in critical care settings<sup>[5]</sup>, depending on subjects and how diarrhea is defined<sup>[6]</sup>. Diarrhea not only inconveniences patients and their caretakers, but it also contributes to negative clinical consequences.

There are a number of factors involved in the pathogenesis of diarrhea during EN, including enteropathogenic infection, use of antibiotics, and altered physiologic response<sup>[4]</sup>. Enteral formulas used in EN are rich in nutrients and provide an excellent medium for bacteria proliferation, including pathogens. Poor handling during the preparation and administration of EN can contaminate the feed and cause infection<sup>[7]</sup>. Similarly, antibiotic treatment is strongly associated with diarrhea in patients receiving EN<sup>[8]</sup>. In fact, antibiotic use alters gut microbiota<sup>[9]</sup>, which leads to increased risk of pathogen overgrowth<sup>[10]</sup>. In addition, the EN might also contribute to the occurrence of diarrhea by altering physiologic responses of the ascending colon where water is secreted into the lumen<sup>[11]</sup>. Traditionally, formulas used in EN were not comprised of a fiber component, thus allowing the gut to rest and preventing tube obstruction. However,

fiber was gradually introduced in EN in response to accumulating evidence of its effects in modulating gut function and improving immune, blood glucose, and serum lipid regulation<sup>[12]</sup>. A meta-analysis showed that the introduction of fiber into the enteral formula was beneficial in reducing the incidence of diarrhea<sup>[13]</sup>.

Physiologic effects exerted by the chemical composition of fiber are determined by its properties: viscosity, fermentability, and solubility. Fibers also include prebiotics that are fermentable, which lead to specific changes in the composition and/or activity of gut microbiota that benefit the well-being and health of the host<sup>[14]</sup>. For example, prebiotics that include fructo-oligosaccharides (FOS), oligofructose, and inulin were shown in multiple human studies to increase the concentrations of bifidobacteria<sup>[15]</sup>. A similar positive result was also demonstrated in healthy adults when fiber and oligosaccharides were added to the enteral formulas<sup>[16]</sup>. However, the effect was not clearly observed in patients receiving EN containing prebiotics<sup>[17]</sup>.

Schneider *et al.*<sup>[18]</sup> reported a favorable effect of fiber on short chain fatty acids (SCFAs). Bacterial fermentation of the ingested fiber in the colon produces SCFAs, primarily acetic, propionic and butyric acid. These SCFAs provide various health benefits to the host, such as supplying fuel to colonocytes, regulating proliferation and differentiation of epithelial cells, increasing colonic blood flow, reducing colonic pH, stimulating pancreatic secretions, other gut hormones and the autonomic nervous system, promoting sodium and water absorption, and possibly affecting gut motility<sup>[19]</sup>.

Currently, there are three reviews investigating fiber in EN that have reported on the various types of fiber used, and the effect on healthy individuals and patients<sup>[13,20,21]</sup>. The aim of this review and meta-analysis was to evaluate recent evidence regarding the effect of dietary fiber and prebiotic supplementation in enteral formulas on diarrhea, fecal microbiota, and SCFAs.

## MATERIALS AND METHODS

### Literature search

Literature published between January 1990 to June 2014 that described the effect of EN supplemented with fiber on diarrhea, fecal microbiota, and SCFAs were systematically identified by searching MEDLINE, EMBASE, The Cochrane Library, CINAHL, Academic Search Premier and Web of Science databases. The following keywords and MeSH terms were used: artificial nutrition/feeding, nutritional support, enteral alimentation/formula, tube feeding, chemically defined diets, sips feeds, oral nutritional supplements, nutrition therapy, and dietary supplements. Additionally, fiber/fibre and specific types of fiber terms were searched individually: roughage, wheat brans, oligosaccharides, oligofructose, inulin, fructo-oligosaccharides, non-starch polysaccharides, soy polysaccharides, lignin,

resistant starch, pectin, arabic gum, pectin, guar gum acacia gum, cellulose, pea fiber, oat, inulin-type fructans, and prebiotics. Lastly, local journals, follow-up reference lists of key papers, and relevant reviews were also hand-searched to locate additional publications that were not accessible through electronic databases.

### Study selection

Two reviewers independently assessed potentially relevant articles for eligibility after eliminating duplications. The selection of articles underwent three stages: selection based on titles, followed by abstract consideration, and finally by assessing the full text. Disagreements were resolved through discussion. Inclusion criteria for this review were: (1) primary research of randomized controlled trial (RCT), non-RCT studies, and observational cohort study designs; (2) studies conducted on adult patients of any health or nutritional status receiving EN; (3) studies assessing effects of fiber in EN on diarrhea and/or fecal microbiota and/or SCFAs; and (4) studies conducted from January 1990 to June 2014. Exclusion criteria included studies that: (1) did not use enteral formula as the sole or main source of nutrients, either orally or through a tube; (2) involved supplementation of synbiotics (prebiotics and probiotics) in the enteral formula; and (3) involved animal or *in vitro* experiments or were case control and cross-sectional studies, review articles or dissertations. This review also was limited to published and available full articles in the English language.

### Data extraction and outcome measures

Following the initial search, reference lists were imported to reference manager software (EndNote version 7.1; Thomson Reuters Corp., New York, NY, United States). Two reviewers extracted the data from each selected study, including: population descriptions (location, inclusion and exclusion criteria, method of recruitment, and consent), methodology (aim, design, study duration, and ethical approval), risk of bias assessment, participants (number of randomized, withdrawals and exclusions, and characteristics of the study participants), interventions (timing and delivery of EN, formula used, and fiber dosage and type), and outcomes (diarrhea incidence, fecal microbiota, and SCFA concentrations).

### Quality assessment

Two reviewers independently assessed the methodological quality of the included studies using the Jadad Scale for Reporting Randomized Controlled Trials and the Scottish Intercollegiate Guidelines Network (SIGN) Critical Appraisal of The Medical Literature; disputes were resolved by discussion. The Jadad Scale considers criteria relating to randomization, blinding, withdrawals, and dropouts<sup>[22]</sup>. Scores ranging from 0 to 5 were given based on fulfillment of criteria addressed, with a higher

score representing studies of better quality. The SIGN Critical Appraisal of The Medical Literature implements the Grading of Recommendations Assessment, Development and Evaluation approach within its guideline development<sup>[23]</sup>. The quality assessment for controlled trials in SIGN incorporates ten items: focused research question, randomization, adequate concealment, blinding of subjects and investigators, similar group characteristics, methodology of measuring relevant outcomes, study drop out, intention to treat analysis, and comparable results for multicenter research. Studies were assigned to one of three groups (high quality, acceptable or unacceptable) based on the methodology quality to minimize bias.

### Statistical analysis

Binary outcomes were combined using the Mantel-Haenszel method with results presented as odds ratios (ORs) and 95% CIs. An OR > 1 indicates that fiber supplementation in EN is associated with higher odds of outcome, *i.e.*, diarrhea. Statistical heterogeneity was evaluated using the  $I^2$  statistic, an estimation of variation in the effect of treatment beyond chance. An  $I^2 > 50\%$  was regarded as substantial heterogeneity, in which case a random effects model was used with subgroup analysis, otherwise a fixed effects model was used. A visual appraisal of a Funnel plot was used to indicate the possibility of publication bias. A  $P < 0.05$  was considered as statistically significant.

## RESULTS

The literature search identified 538 records. Forty-one studies were retrieved after excluding duplicates and titles that were not relevant to the research questions. A flow diagram describing the selection of studies is shown in Figure 1. Twenty-two experimental studies and four observational cohort studies that met the inclusion criteria were used for this review<sup>[17,18,24-47]</sup>. Characteristics of these studies are presented in Table 1. Eight studies were conducted on critically ill patients, 16 in mixed wards inclusive of medical, surgical and geriatrics wards, two in outpatient clinics, and two included studies did not explicitly mention the departments/units where the patients were hospitalized. SIGN methodological assessment classified two studies as unacceptable, which were therefore not used in this review.

Most studies that investigated fiber supplementation in EN used soy polysaccharide ( $n = 7$ ), followed by mixed fiber ( $n = 6$ ), partially hydrolyzed guar gum ( $n = 3$ ), psyllium ( $n = 3$ ), oat and soy fiber ( $n = 2$ ), FOS ( $n = 1$ ), inulin ( $n = 1$ ), banana flakes ( $n = 1$ ), and galactomannan ( $n = 1$ ); one study did not mention the type of fiber used. Fiber was administered as an integrated component of the enteral formula in 14 studies, and added as supplementation in 10 studies. Two studies used fiber containing enteral formula with additional fiber supplementation as part

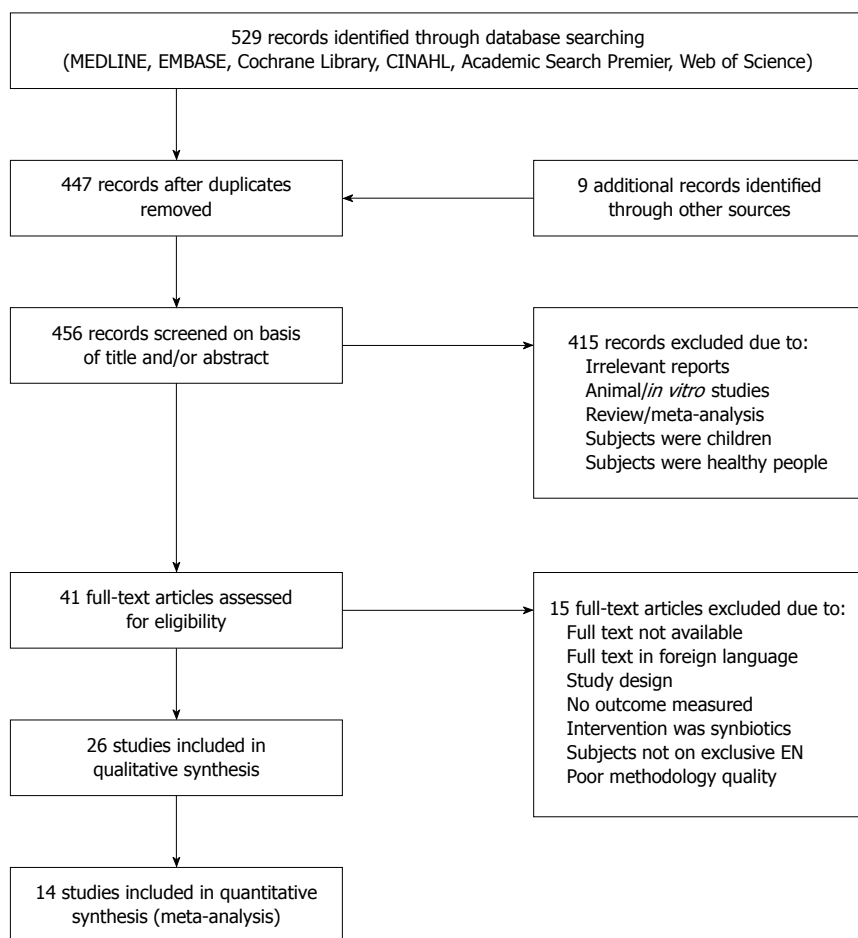


Figure 1 Flow diagram of included and excluded studies for the systematic review. EN: Enteral nutrition.

of the intervention<sup>[17,28]</sup>, for which diarrhea incidence among adult patients receiving EN ranged from 10.5 to 90.0%. There was variability in the definition of diarrhea among studies, taking into account partly or all of the stool properties: volume, consistency, and frequency. Diarrhea definitions were based on diarrhea score, number of liquid stools per day and/or volume, number of loose or watery stools, with a scale based on consistency and frequency, and use of stool chart, *i.e.*, Bristol and King's stool chart.

Fourteen experimental studies with data on diarrhea incidence during EN (fiber-containing EN vs fiber-free EN) were included for meta-analysis. As shown in Figure 2, pooling of the studies under a random effects model confirmed the protective effect of fiber in reducing incidence of diarrhea among adult patients requiring EN ( $P < 0.01$ ). Subgroup analysis was conducted due to statistically significant heterogeneity of the data ( $I^2 = 54\%$ ). The analysis revealed homogeneity among studies conducted in non-critically ill patients ( $I^2 = 28\%$ ), but studies conducted among critically ill patients were heterogeneous ( $I^2 = 52\%$ ). Additionally, a positive effect of fiber supplementation during EN on reducing the incidence of diarrhea was not seen in the critically ill patients, but was significant in the non-critically ill

patients ( $P < 0.01$ ).

Asymmetry presentation of the funnel plot in Figure 3 revealed that inter-study heterogeneity existed and this may be an indication of potential publication bias. Of the 26 studies investigating the effect of fiber in EN on the three main outcomes, only eight studies had prebiotics in the intervention. An additional meta-analysis failed to indicate any protective effect of prebiotic supplementation in EN against the incidence of diarrhea (Figure 4).

The effect of fiber supplementation in EN towards fecal microbiota was only investigated in four studies<sup>[17,18,40,44]</sup> (Table 2). Only one study had shown a significant increase in total bacteria when patients were given fiber (mixed fiber with prebiotics)-supplemented EN<sup>[18]</sup>. Likewise, the same study found no changes in regard to the composition of the dominant bacteria group (gram positive/negative, aerobic and anaerobic). On the contrary, the study by Nakao *et al.*<sup>[40]</sup> reported a significant decrease in aerobic bacteria with galactomannan supplementation. There were no reports of significant changes in fecal bifidobacteria concentrations in patients receiving fiber-supplemented EN<sup>[17,18,44]</sup>.

Five studies investigated the effect of fiber supplementation in EN on SCFAs<sup>[17,18,34,40,46]</sup> (Table

**Table 1 Characteristics of included studies (1990-2013)**

Ref.	Study design	Study population	Dose and type of fiber	Study duration	SIGN category	Jadad score
Dobb <i>et al</i> <sup>[24]</sup> , 1990	Double-blind RCT	91 adult patients in ICU, The Royal Perth Hospital, Australia	Soy polysaccharide, 21 g/L	Max of 18 d/ discharge ICU	High quality	4
Shankardass <i>et al</i> <sup>[25]</sup> , 1990	Double-blind, cross-over RCT	28 long-term EN patients, Multicenter: Chedoke-McMaster Hospital, Queen Elizabeth Hospital, Riverdale Hospital, Sunnybrook Medical Centre, University of Toronto, Toronto, Ontario, Canada	Soy polysaccharide, 12.8 g/1000 kcal	12 wk	Acceptable	3
Guenter <i>et al</i> <sup>[26]</sup> , 1991	Non-RCT	100 ICU patients, Graduate Hospital Pennsylvania, United States	Soy polysaccharide, 14.4 g/L	Not mentioned	Acceptable	0
de Kruif <i>et al</i> <sup>[27]</sup> , 1993	RCT	60 surgical patients, University Hospital, Netherlands	Soy polysaccharide, 20 g/L	5 d	Acceptable	3
Collier <i>et al</i> <sup>[28]</sup> , 1994	Pre-post observational study	57 surgical patients, Regional Medical Centre, Memphis Tennessee, United States	Soy polysaccharide, 21 g/L	Not mentioned	NA	0
Homann <i>et al</i> <sup>[29]</sup> , 1994	Double-blind RCT	100 surgical and medical patients, Germany	Partially hydrolyzed guar gum, 20 g/L	10 d	Acceptable	2
Zarling <i>et al</i> <sup>[30]</sup> , 1994	Cross-over RCT	10 recovering stroke patients, Extended Care facilities, Hines VA Hospital, Illinois, United States	Oat and soy fiber, 14.4 g/L	23 d	Acceptable	2
Reese <i>et al</i> <sup>[31]</sup> , 1996	Double-blind RCT	80 surgical patients (head and neck cancer), University of Iowa Hospital, United States	Soy polysaccharide, 7 or 14 g/L	Until patient changed to oral/ discharged	High quality	5
Heather <i>et al</i> <sup>[32]</sup> , 1991	RCT	49 mixed wards patients, Portland Veterans Affairs Medical Center, Portland, United States	Psyllium, 15 g/d	6 d	Acceptable	2
Belknap <i>et al</i> <sup>[33]</sup> , 1997	RCT	60 medical, surgical, and ICU patients, Department of Veterans Affairs Medical Center, Oklahoma, United States	Psyllium hydrophilic mucilloids, 14 g/d	7 d	Acceptable	3
Sobotka <i>et al</i> <sup>[34]</sup> , 1997	Single-blind, pre-post single group trial	9 patients, Charles University, Hradec Krdlove, Czech Republic	Inulin 15 g/L	2 wk	Acceptable	0
Emery <i>et al</i> <sup>[35]</sup> , 1997	RCT	31 ICU patients, Pennsylvania Hospital, United States	Banana flakes, 1.5 g/d	7 d	Acceptable	0
Khalil <i>et al</i> <sup>[36]</sup> , 1998	Single-blind RCT	16 surgical patients, National University Hospital, Singapore	Oat and soy polysaccharides, 14.4 g/L	10 d	Acceptable	2
Cockram <i>et al</i> <sup>[37]</sup> , 1998	Single-blind RCT	79 hemodialysis patients from three outpatients hemodialysis clinics, United States	FOS, 15.4 g/L	3 wk	Acceptable	2
Schultz <i>et al</i> <sup>[38]</sup> , 2000	Double-blind, 2 × 2 factorial RCT	44 critically ill patients, Maine Medical Center, Portland, United States	Mixed fiber <sup>1</sup> and pectin, up to 17 g/d, inclusive of 10 g/L FOS	9 d	High quality	4
Spapen <i>et al</i> <sup>[39]</sup> , 2001	Double-blind, RCT	25 critically ill patients, Academic Hospital, Vrije, Brussels, Belgium	Partially hydrolyzed guar gum, 22 g/L	21 d/ withdrawal of EN	High quality	4
Nakao <i>et al</i> <sup>[40]</sup> , 2002	Pre-post single group trial	20 geriatric patients, Nagoya University Hospital, Japan	Galactomannan, 7-28 g/d	6 wk	Acceptable	0
Rushdi <i>et al</i> <sup>[41]</sup> , 2004	Double-blind RCT	20 critically ill patients, Teaching Hospital, Cairo University, Egypt	Guar gum, 22 g/L	4 d	High quality	5
Vandewoude <i>et al</i> <sup>[42]</sup> , 2005	RCT	172 geriatric patients, Universitair Centrum Geriatrie, Belgium	Mixed fiber <sup>2</sup> , 30 g/d inclusive of inulin	Not mentioned, measured weekly	Acceptable	1
Schneider <i>et al</i> <sup>[18]</sup> , 2006	Double-blind, cross-over, RCT	15 long-term EN patients, University Hospital, Nice, France	Mixed fiber <sup>3</sup> , 15 g/L inclusive of 3.45 g/L of FOS	5 wk	High quality	3
Shimoni <i>et al</i> <sup>[43]</sup> , 2007	Non-RCT	148 elderly patients from general internal medicine wards, Gastroenterology Laniado Hospital, Natanya, Ramat Aviv, Israel	Soy polysaccharides, 13.6 g/1000 kcal	5 d	Acceptable	1
Wierdsma <i>et al</i> <sup>[44]</sup> , 2009	Double-blind RCT	19 patients, Outpatients Clinic of the VU University Medical Centre, Amsterdam, The Netherlands	Mixed fiber <sup>1</sup> , 17.6 g/L inclusive of 7 g of FOS	8 wk	Acceptable	3
Chittawatanarat <i>et al</i> <sup>[45]</sup> , 2010	Double-blind RCT	34 septic patients in ICU, Maharaj Nakorn Chiang Mai Hospital, Thailand	Mixed fiber <sup>2</sup> , 15.1 g/L inclusive of 5.3 g of FOS	14 d, ≥ 5 d	High quality	4

Kato <i>et al</i> <sup>[46]</sup> , 2012	Pre-post single group trial	15 patients from medical wards of Kameyama Kaisei Hospital, Japan	Psyllium, 5.2 g/d	4 wk	Acceptable	0
Bittencourt <i>et al</i> <sup>[47]</sup> , 2012	Sequential and observational study	110 adult patients, São Joaquim Hospital of Beneficência Portuguesa, Brazil	Soluble and insoluble fiber <sup>3</sup> , 15 g/L	≥ 5 d	NA	0
Majid <i>et al</i> <sup>[17]</sup> , 2013	Double-blind RCT	22 critically ill patients, Guy's and St Thomas' NHS Foundation Trust and King's College Hospital NHS Foundation Trust, London, United Kingdom	Mixed fiber <sup>4</sup> , 15 g/L and additional 7 g/d oligofructose/inulin	7-14 d	High quality	5

<sup>1</sup>Oat, soy polysaccharide, gum arabic, cellulose, and FOS; <sup>2</sup>Cellulose, hemicellulose A, pectin, hemicellulose B, and inulin; <sup>3</sup>Cellulose, lignin, hemicellulose, pectin, and FOS; <sup>4</sup>Soy polysaccharide, alpha-cellulose, arabic gum, inulin, oligofructose, and resistant starch. EN: Enteral nutrition; FOS: Fructo-oligosaccharides; ICU: Intensive care unit; RCT: Randomized controlled trial; SIGN: Scottish Intercollegiate Guidelines Network; NA: Not available.

**Table 2 Studies investigating the effect of fiber supplementation in enteral nutrition on fecal microbiota**

Ref.	Total microbiota count	Dominant group	Bifidobacteria	Others
Nakao <i>et al</i> <sup>[40]</sup> , 2002 Schneider <i>et al</i> <sup>[18]</sup> , 2006	No change ↑	↓ in aerobic bacteria No change in composition of aerobic and anaerobic, gram positive and gram negative bacteria	Not measured No change	Not measured ↑ in the numbers of <i>enterococci</i> at the end of the fiber-free EN ↑ in the numbers of <i>bacteroides</i> at the end of the mixed fiber EN
Wierdsma <i>et al</i> <sup>[44]</sup> , 2009	Not measured	Not measured	↓ In patients compared to healthy controls  Concentration remained stable in the FOS group but ↓ in the non-FOS group during intervention	Not measured
Majid <i>et al</i> <sup>[17]</sup> , 2013	No change	No change	No change	↓ <i>Faecalibacterium prausnitzii</i> and <i>Bacteroides-Prevotella</i> in the prebiotics group

EN: Enteral nutrition; FOS: Fructo-oligosaccharides.

**Table 3 Studies investigating the effect of fiber supplementation in enteral nutrition towards short-chain fatty acids**

Ref.	Total SCFA	Acetate	Propionate	Butyrate
Sobotka <i>et al</i> <sup>[34]</sup> , 1997	No change	No change	No change	No change
Nakao <i>et al</i> <sup>[40]</sup> , 2002	No change	↑	↑	No change
Schneider <i>et al</i> <sup>[18]</sup> , 2006	↑	↑	No change	↑
Kato <i>et al</i> <sup>[46]</sup> , 2012	↑	↑	No significant amount detected	No significant amount detected
Majid <i>et al</i> <sup>[17]</sup> , 2013	No change	No change	No change	No change

EN: Enteral nutrition; SCFA: Short-chain fatty acid.

3). Fiber supplementation increased total SCFA in two studies<sup>[18,46]</sup>, whereas three studies found no changes in the SCFA concentration<sup>[17,34,40]</sup>. In addition, prebiotic supplementation in EN did not increase the concentration of SCFA<sup>[17,34]</sup>, with the exception of one positive result<sup>[18]</sup>.

## DISCUSSION

The results of this updated meta-analysis of prospective studies confirm previous evidence showing that fiber supplementation decreases diarrhea incidence for adult patients requiring EN<sup>[13]</sup>. The dosage of fiber used in the included studies ranged from 5.2 to 39.0 g/d<sup>[41,46]</sup>. In this review, soy polysaccharide

emerged as the most extensively studied fiber in EN for patients. Likewise, it is also the most common fiber added in the enteral formula. The mechanisms of action for minimizing diarrhea incidence include the ability of fiber to hold water<sup>[48]</sup>, increase bulk<sup>[49]</sup>, and improve gut barrier function<sup>[12]</sup>. However, this effect of fiber varies based on the type of patients studied<sup>[13]</sup>. Subgroup analysis conducted in this current review shows that the incidence of diarrhea was only reduced in non-critically ill patients, consistent with previous reviews<sup>[13,21]</sup>. It is possible that the severity of illness and the antibiotics therapy undertaken by the critically ill patients counters the beneficial effect of fiber supplementation. The use of antibiotics or antifungal drugs is an independent factor that contributes to

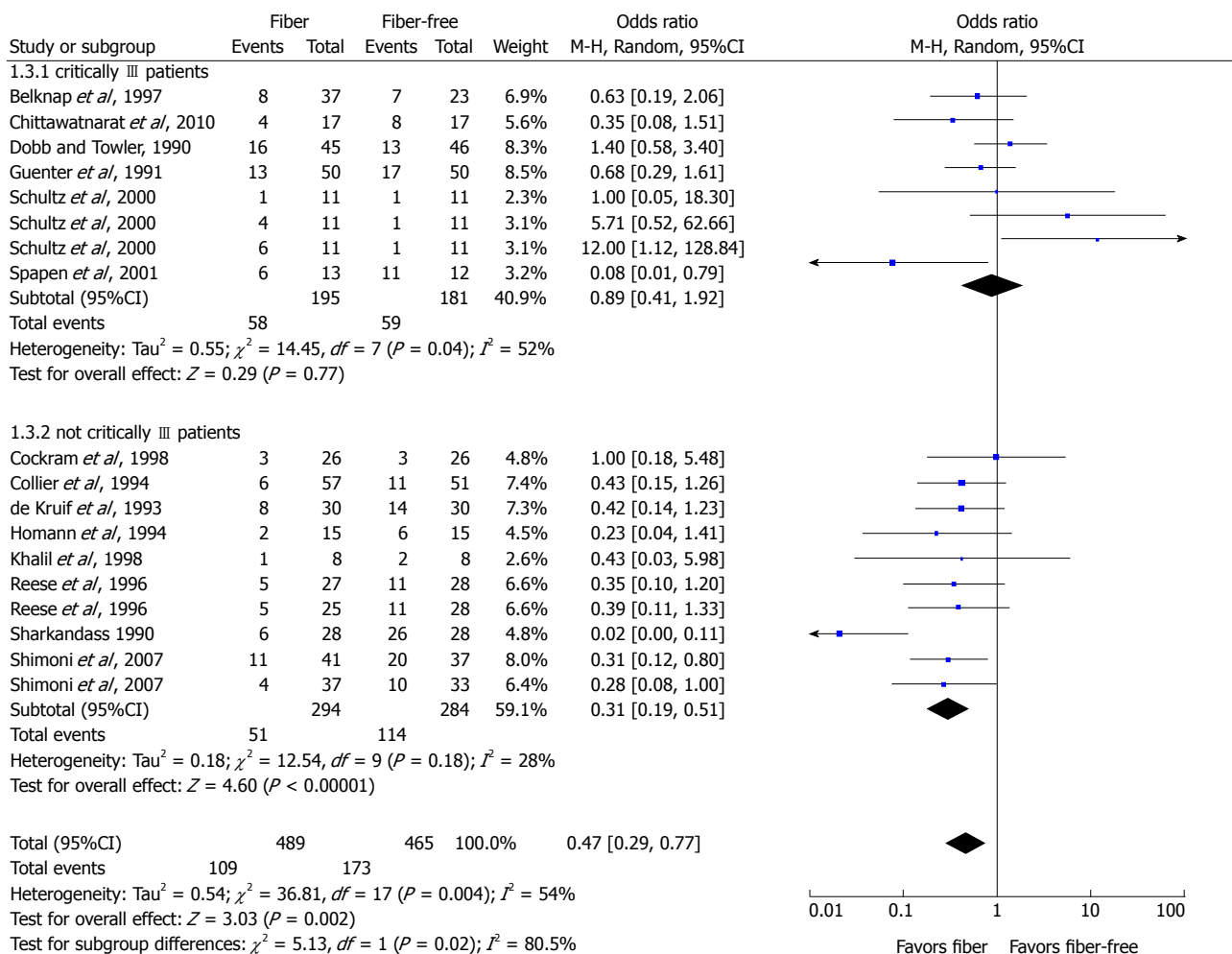


Figure 2 Meta-analysis of the effect of fiber supplementation in enteral nutrition on incidence of diarrhea.

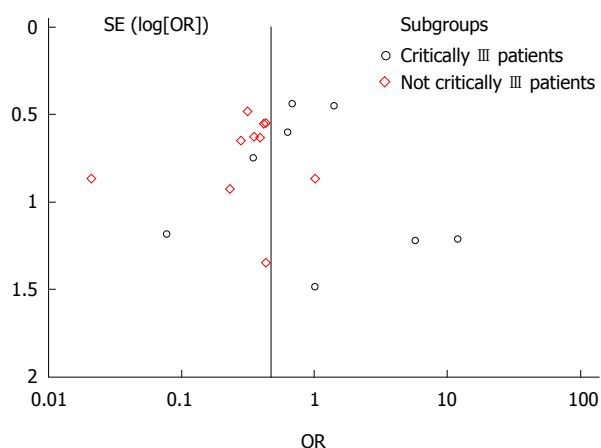


Figure 3 Funnel plot for the effect of fiber supplementation in enteral nutrition on incidence of diarrhea.

higher prevalence of diarrhea in critically ill patients<sup>[50]</sup>. Moreover, critically ill patients often suffer from gastrointestinal dysfunction with abnormal motility patterns and impaired barrier integrity<sup>[51]</sup>. Although the potential benefits are not clearly observed in the critically ill patients, the main finding of this review has

significant implications for health care professionals, and advocates the use of fiber-containing over fiber-free enteral formulas to other groups of patients.

Prebiotic components of fiber meet three distinct criteria: (1) are resistant to gastric acidity, hydrolysis by mammalian enzymes, and gastrointestinal absorption; (2) can be fermented by intestinal microbiota; and (3) selectively stimulate the growth and/or activity of intestinal bacteria associated with health and well-being<sup>[52]</sup>. Our results show that prebiotic supplementation in enteral formulas did not minimize the incidence of diarrhea in adult patients receiving EN. The prebiotic dosage reported by studies included in this meta-analysis ranged from 5.3 to 15.4 g/L of FOS<sup>[37,45]</sup>. Two of the three studies included in the meta-analysis were conducted in an intensive care unit setting, which may explain the lack of a significant benefit from prebiotic supplementation in EN for diarrhea.

Ingested fiber influences the intestinal microbiota by providing the required substrate for colonic fermentation, and consequently assists in microbiota proliferation. Over the years, reports revealed that the introduction of prebiotics in healthy humans increases

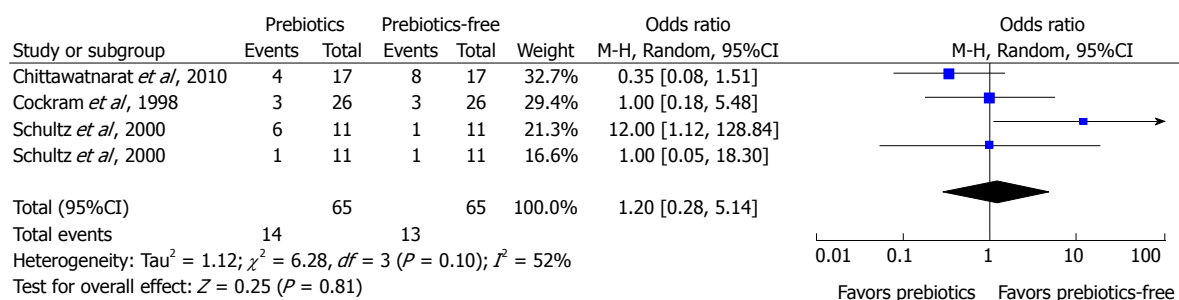


Figure 4 Meta-analysis of the effect of prebiotics supplementation in enteral nutrition on incidence of diarrhea.

the concentrations of bifidobacteria when EN is given as the sole source of nutrition<sup>[16]</sup>. However, the effect of fiber and prebiotic supplementation on fecal microbiota in adult patients receiving EN could not be concluded due to conflicting findings<sup>[17,18,40,44]</sup>. These inconsistent results might be due to the heterogeneity of study populations, *e.g.* the inclusion of stable and critically ill patients. Additionally, concurrent use of antibiotics with EN might alter the colonic microbiota composition. Most antibiotics alter the bacterial composition of gut microbiota as reflected by the suppression of anaerobic bacteria and an increased incidence of *Clostridium difficile*-associated diseases<sup>[10]</sup>. However, by controlling the confounding factor, antibiotics therapy remains difficult, as it is part of a medical treatment received by patients who are critically ill. The range of prebiotics dosages (5.20–13.75 g/d) may also have contributed to the lacking of a bifidogenic effect. Healthy people require 10 g of prebiotics to increase fecal bifidobacteria concentration<sup>[53]</sup>, thus patients might require a higher dosage to exert such an effect. Most studies that investigated prebiotics were conducted in patients receiving EN supplemented with a mixture of various types of fiber (inclusive of prebiotics) instead of a single source of fiber; only two studies used FOS as its sole source of fiber in the intervention<sup>[34,37]</sup>. Due to the limited numbers of RCTs, a meta-analysis investigating the role of fiber, specifically prebiotics on fecal bifidobacteria, other microbiota, and SCFAs, could not be conducted.

Fermentation of fiber yields SCFAs, which are a source of nutrients for colonic mucosal cells. Therefore, the luminal acidity produced by the increased concentrations of SCFAs helps maintain an environment with a low pH for the colonic microbiota, subsequently preventing an enteropathogenic infection<sup>[19]</sup>. While provision of fermentable fiber increases SCFAs in healthy humans<sup>[54]</sup>, mixed results emerged in this review for studies investigating the effect of fiber supplementation in EN in patients. Despite two studies displaying no changes in SCFA concentrations, a significant increase in SCFA concentrations was observed in studies conducted on stable patients (geriatrics, long-term EN, and medical patients)<sup>[18,40,46]</sup>. Similarly, supplementation of fiber in EN given to the critically ill patients did not cause an increase in the SCFA concentration<sup>[17]</sup>. According to

a recent study, critically ill patients suffered from a low SCFA concentration as compared to healthy individuals, possibly due to the reduction in total obligate anaerobes throughout the intensive care unit admission<sup>[55]</sup>. Moreover, fiber fermentation varies depending on the source of fibers used in the studies<sup>[56]</sup>; different fibers yield different concentrations of total SCFA.

The main limitation of this review is the heterogeneity of the patients, such as the inclusion of patients with varying severity of illness, mainly the critically ill and the non-critically ill patients, and the use of antibiotics, which could confound the results. However, these factors are inevitable when conducting research in patients. Secondly, this review also lacks uniformity with regard to the definition of diarrhea<sup>[57,58]</sup>, for which objective and subjective considerations might influence the results of the studies in terms of the incidence of diarrhea. As such, the use of a validated tool in defining diarrhea should be considered in future research. Some studies were excluded from the meta-analysis, as the definition of diarrhea was not mentioned explicitly despite indicating a measurable outcome. Lastly, this review only incorporates publications written in English, and therefore may introduce language bias to the review.

This systematic review demonstrates that fiber assists in minimizing diarrhea in adult patients receiving EN, particularly those who are not critically ill. However, prebiotics (part of the fiber component) may not provide the same impact as fiber based on current evidence. Therefore, the alteration of microbiota and SCFAs using fiber and/or prebiotics in minimizing diarrhea remains inconclusive.

## COMMENTS

### Background

Enteral nutrition (EN) provides nutrients crucial for patient recovery. However, diarrhea is one of the common complications of EN. Fiber supplementation in EN has been shown to regulate bowel function. The undigested fiber increases proliferation of colonic microbiota, including bifidobacteria, and its fermentation yields short chain fatty acids (SCFAs), which enhance the absorption of water and sodium in the colon.

### Research frontiers

Even though fiber is considered to improve diarrhea during EN, the effect of prebiotics remains unknown. To the best of our knowledge, this is the first systematic review to investigate the effect of both fiber and prebiotics in



minimizing diarrhea in EN. Additionally, the impact of fiber supplementation in EN on fecal microbiota and SCFA was also explored.

### Innovations and breakthroughs

Fiber added in EN has been shown to reduce the incidence of diarrhea in non-critically ill, tube-fed patients. This effect can be due to alterations in SCFAs and colonic microbiota. However, such an effect was not seen if prebiotics are added in EN, despite the fact that prebiotics increase bifidobacteria concentrations in healthy human subjects who consumed at least 10 g/d. Thus, the evidence to support the use of fiber and/or prebiotics in the manipulation of fecal microbiota and SCFA in patients receiving EN is limited.

### Applications

Fiber-containing enteral formulas should be considered for patients receiving EN to help minimize diarrhea, and the use of prebiotics as first-line feeding management requires further scientific evidence.

### Terminology

Prebiotics are selectively fermented ingredients that allow specific changes, both in the composition and/or activity of the gut microbiota, thereby conferring benefits upon host well-being and health.

### Peer-review

This is a good review in which the authors conducted meta-analyses of the effects of fiber or prebiotic supplementation on diarrhea observed in patients receiving EN. It was concluded that fiber alleviates diarrhea in non-critically ill patients, and prebiotics may not provide the same impact as fiber, based on the current evidence. The results are interesting and suggest that the alteration of microbiota and SCFAs using fiber and/or prebiotics in minimizing diarrhea remains inconclusive.

## REFERENCES

- Alpers DH. Enteral feeding and gut atrophy. *Curr Opin Clin Nutr Metab Care* 2002; **5**: 679-683 [PMID: 12394644 DOI: 10.1097/01.mco.0000038812.16540.72]
- Luyer MD, Jacobs JA, Vreugdenhil AC, Hadfoune M, Dejong CH, Buurman WA, Greve JW. Enteral administration of high-fat nutrition before and directly after hemorrhagic shock reduces endotoxemia and bacterial translocation. *Ann Surg* 2004; **239**: 257-264 [PMID: 14745335 DOI: 10.1097/01.sla.0000108695.60059.80]
- Sigalet DL, Mackenzie SL, Hameed SM. Enteral nutrition and mucosal immunity: implications for feeding strategies in surgery and trauma. *Can J Surg* 2004; **47**: 109-116 [PMID: 15132464]
- Whelan K. Enteral-tube-feeding diarrhoea: manipulating the colonic microbiota with probiotics and prebiotics. *Proc Nutr Soc* 2007; **66**: 299-306 [PMID: 17637081 DOI: 10.1017/s0029665107005551]
- Wiesen P, Van Gossum A, Preiser JC. Diarrhoea in the critically ill. *Curr Opin Crit Care* 2006; **12**: 149-154 [PMID: 16543792 DOI: 10.1097/01.ccx.0000216583.64804.46]
- Majid HA, Bin Sidek MA, Chinnna K. Psychometric properties of DAPonDEN: definitions, attitudes and practices in relation to diarrhea during enteral nutrition questionnaire. *Prev Med* 2013; **57** Suppl: S64-S66 [PMID: 23298820 DOI: 10.1016/j.ypmed.2012.12.021]
- Levy J, Van Laethem Y, Verhaegen G, Perpète C, Butzler JP, Wenzel RP. Contaminated enteral nutrition solutions as a cause of nosocomial bloodstream infection: a study using plasmid fingerprinting. *JPEN J Parenter Enteral Nutr* 1989; **13**: 228-234 [PMID: 2503632]
- Gunter P. Safe practices for enteral nutrition in critically ill patients. *Crit Care Nurs Clin North Am* 2010; **22**: 197-208 [PMID: 20541068 DOI: 10.1016/j.ccell.2010.03.009]
- Pérez-Cobas AE, Gosalbes MJ, Friedrichs A, Knecht H, Artacho A, Eismann K, Otto W, Rojo D, Bargiela R, von Bergen M, Neulinger SC, Däumer C, Heinsen FA, Latorre A, Barbas C, Seifert J, dos Santos VM, Ott SJ, Ferrer M, Moya A. Gut microbiota disturbance during antibiotic therapy: a multi-omic approach. *Gut* 2013; **62**: 1591-1601 [PMID: 23236009 DOI: 10.1136/gutjnl-2012-303184]
- Surawicz CM, Elmer GW, Speelman P, McFarland LV, Chinn J, van Belle G. Prevention of antibiotic-associated diarrhea by *Saccharomyces boulardii*: a prospective study. *Gastroenterology* 1989; **96**: 981-988 [PMID: 2494098]
- Bowling TE, Raimundo AH, Grimble GK, Silk DB. Reversal by short-chain fatty acids of colonic fluid secretion induced by enteral feeding. *Lancet* 1993; **342**: 1266-1268 [PMID: 7901584 DOI: 10.1016/0140-6736(93)92360-6]
- Slavin J. Fiber and prebiotics: mechanisms and health benefits. *Nutrients* 2013; **5**: 1417-1435 [PMID: 23609775 DOI: 10.3390/nu5041417]
- Elia M, Engfer MB, Green CJ, Silk DB. Systematic review and meta-analysis: the clinical and physiological effects of fibre-containing enteral formulae. *Aliment Pharmacol Ther* 2008; **27**: 120-145 [PMID: 17922802 DOI: 10.1111/j.1365-2036.2007.03544.x]
- Roberfroid M, Gibson GR, Hoyles L, McCartney AL, Rastall R, Rowland I, Wolvers D, Watzl B, Szajewska H, Stahl B, Guarner F, Respondek F, Whelan K, Coxam V, Davicco MJ, Léotoing L, Wittrant Y, Delzenne NM, Cani PD, Neyrinck AM, Meheust A. Prebiotic effects: metabolic and health benefits. *Br J Nutr* 2010; **104** Suppl 2: S1-S63 [PMID: 20920376 DOI: 10.1017/s0007114510003363]
- Kolida S, Gibson GR. Prebiotic capacity of inulin-type fructans. *J Nutr* 2007; **137**: 2503S-2506S [PMID: 17951493]
- Whelan K, Judd PA, Preedy VR, Simmering R, Jann A, Taylor MA. Fructooligosaccharides and fiber partially prevent the alterations in fecal microbiota and short-chain fatty acid concentrations caused by standard enteral formula in healthy humans. *J Nutr* 2005; **135**: 1896-1902 [PMID: 16046714]
- Majid HA, Cole J, Emery PW, Whelan K. Additional oligofructose/inulin does not increase faecal bifidobacteria in critically ill patients receiving enteral nutrition: a randomised controlled trial. *Clin Nutr* 2014; **33**: 966-972 [PMID: 24290345 DOI: 10.1016/j.clnu.2013.11.008]
- Schneider SM, Girard-Pipau F, Anty R, van der Linde EG, Philipsen-Geerling BJ, Knol J, Filippi J, Arab K, Hébuterne X. Effects of total enteral nutrition supplemented with a multi-fibre mix on faecal short-chain fatty acids and microbiota. *Clin Nutr* 2006; **25**: 82-90 [PMID: 16253403 DOI: 10.1016/j.clnu.2005.09.006]
- Green CJ. Fibre in enteral nutrition. *Clin Nutr* 2001; **20**: 23-39 [DOI: 10.1054/clnu.2001.0425]
- del Olmo D, López del Val T, Martínez de Icaya P, de Juana P, Alcázar V, Koning A, Vázquez C. [Fiber in enteral nutrition: systematic review of the literature]. *Nutr Hosp* 2004; **19**: 167-174 [PMID: 15211726]
- Yang G, Wu XT, Zhou Y, Wang YL. Application of dietary fiber in clinical enteral nutrition: a meta-analysis of randomized controlled trials. *World J Gastroenterol* 2005; **11**: 3935-3938 [PMID: 15991297]
- Jadad AR, Moore RA, Carroll D, Jenkinson C, Reynolds DJ, Gavaghan DJ, McQuay HJ. Assessing the quality of reports of randomized clinical trials: is blinding necessary? *Control Clin Trials* 1996; **17**: 1-12 [PMID: 8721797 DOI: 10.1016/0197-2456(95)00134-4]
- Methodology checklist. SIGN. 2014. Available from: URL: <http://www.sign.ac.uk/methodology/checklists.html>
- Dobb GJ, Towler SC. Diarrhoea during enteral feeding in the critically ill: a comparison of feeds with and without fibre. *Intensive Care Med* 1990; **16**: 252-255 [PMID: 2162867 DOI: 10.1007/BF01705161]
- Shankarass K, Chuchmach S, Chelshwick K, Stefanovich C, Spurr S, Brooks J, Tsai M, Saibil FG, Cohen LB, Edington JD. Bowel function of long-term tube-fed patients consuming formulae with and without dietary fiber. *JPEN J Parenter Enteral Nutr* 1990; **14**: 508-512 [PMID: 2172578 DOI: 10.1177/0148607190014005508]
- Gunter PA, Settle RG, Perlmutter S, Marino PL, DeSimone GA, Rolandelli RH. Tube feeding-related diarrhea in acutely ill patients. *JPEN J Parenter Enteral Nutr* 1991; **15**: 277-280 [PMID: 1650854 DOI: 10.1177/0148607191015003277]
- de Kruif JT, Vos A. The influence of soyfibre supplemented tube feeding on the occurrence of diarrhoea in postoperative patients.

- Clin Nutr* 1993; **12**: 360-364 [PMID: 16843339 DOI: 10.1016/0261-5614(93)90033-Z]
- 28 **Collier P**, Kudsk KA, Glezer J, Brown RO. Fiber-containing formula and needle catheter jejunostomies: a clinical evaluation. *Nutr Clin Pract* 1994; **9**: 101-103 [PMID: 8078443 DOI: 10.1177/0115426594009003101]
- 29 **Homann HH**, Kemen M, Fuessenich C, Senkal M, Zumtobel V. Reduction in diarrhea incidence by soluble fiber in patients receiving total or supplemental enteral nutrition. *JPEN J Parenter Enteral Nutr* 1994; **18**: 486-490 [PMID: 7602722 DOI: 10.1177/0148607194018006486]
- 30 **Zarling EJ**, Edison T, Berger S, Leya J, DeMeo M. Effect of dietary oat and soy fiber on bowel function and clinical tolerance in a tube feeding dependent population. *J Am Coll Nutr* 1994; **13**: 565-568 [PMID: 7706587 DOI: 10.1080/07315724.1994.10718448]
- 31 **Reese JL**, Means ME, Hanrahan K, Clearman B, Colwill M, Dawson C. Diarrhea associated with nasogastric feedings. *Oncol Nurs Forum* 1996; **23**: 59-66; discussion 66-68 [PMID: 8628712]
- 32 **Heather DJ**, Howell L, Montana M, Howell M, Hill R. Effect of a bulk-forming cathartic on diarrhea in tube-fed patients. *Heart Lung* 1991; **20**: 409-413 [PMID: 1906447]
- 33 **Belknap D**, Davidson LJ, Smith CR. The effects of psyllium hydrophilic mucilloid on diarrhea in enterally fed patients. *Heart Lung* 1997; **26**: 229-237 [PMID: 9176691 DOI: 10.1016/S0147-9563(97)90060-1]
- 34 **Sobotka L**, Brátova M, Slemrová M, Manák J, Vizard J, Zadák Z. Inulin as the soluble fiber in liquid enteral nutrition. *Nutrition* 1997; **13**: 21-25 [PMID: 9058443 DOI: 10.1016/S0899-9007(97)90874-1]
- 35 **Emery EA**, Ahmad S, Koethe JD, Skipper A, Perlmutter S, Paskin DL. Banana flakes control diarrhea in enterally fed patients. *Nutr Clin Pract* 1997; **12**: 72-75 [PMID: 9155405 DOI: 10.1177/011542659701200272]
- 36 **Khalil L**, Ho KH, Png D, Ong CL. The effect of enteral fibre-containing feeds on stool parameters in the post-surgical period. *Singapore Med J* 1998; **39**: 156-159 [PMID: 9676145]
- 37 **Cockram DB**, Hensley MK, Rodriguez M, Agarwal G, Wennberg A, Ruey P, Ashbach D, Hebert L, Kunau R. Safety and tolerance of medical nutritional products as sole sources of nutrition in people on hemodialysis. *J Ren Nutr* 1998; **8**: 25-33 [PMID: 9724827 DOI: 10.1016/S1051-2276(98)90034-6]
- 38 **Schultz AA**, Ashby-Hughes B, Taylor R, Gillis DE, Wilkins M. Effects of pectin on diarrhea in critically ill tube-fed patients receiving antibiotics. *Am J Crit Care* 2000; **9**: 403-411 [PMID: 11072556]
- 39 **Spapen H**, Diltoer M, Van Malderen C, Opendacker G, Suys E, Huyghens L. Soluble fiber reduces the incidence of diarrhea in septic patients receiving total enteral nutrition: a prospective, double-blind, randomized, and controlled trial. *Clin Nutr* 2001; **20**: 301-305 [PMID: 11478826 DOI: 10.1054/clnu.2001.0399]
- 40 **Nakao M**, Ogura Y, Satake S, Ito I, Iguchi A, Takagi K, Nabeshima T. Usefulness of soluble dietary fiber for the treatment of diarrhea during enteral nutrition in elderly patients. *Nutrition* 2002; **18**: 35-39 [PMID: 11827762 DOI: 10.1016/S0899-9007(01)00715-8]
- 41 **Rushdi TA**, Pichard C, Khater YH. Control of diarrhea by fiber-enriched diet in ICU patients on enteral nutrition: a prospective randomized controlled trial. *Clin Nutr* 2004; **23**: 1344-1352 [PMID: 15556256 DOI: 10.1016/j.clnu.2004.04.008]
- 42 **Vandewoude MF**, Paridaens KM, Suy RA, Boone MA, Strobbe H. Fibre-supplemented tube feeding in the hospitalised elderly. *Age Ageing* 2005; **34**: 120-124 [PMID: 15569656 DOI: 10.1093/ageing/afh242]
- 43 **Shimoni Z**, Averbuch Y, Shir E, Gottshalk T, Kfir D, Niven M, Moshkowitz M, Froom P. The addition of fiber and the use of continuous infusion decrease the incidence of diarrhea in elderly tube-fed patients in medical wards of a general regional hospital: a controlled clinical trial. *J Clin Gastroenterol* 2007; **41**: 901-905 [PMID: 18090158 DOI: 10.1097/01.mcg.0000225662.23179.b6]
- 44 **Wierdsma NJ**, van Bodegraven AA, Uitdehaag BM, Arjaans W, Savelkoul PH, Kruijenga HM, van Bokhorst-de van der Schueren MA. Fructo-oligosaccharides and fibre in enteral nutrition has a beneficial influence on microbiota and gastrointestinal quality of life. *Scand J Gastroenterol* 2009; **44**: 804-812 [PMID: 19347770 DOI: 10.1080/00365520902839675]
- 45 **Chittawatnanarat K**, Pokawinpuadison P, Polbhakdee Y. Mixed fibers diet in surgical ICU septic patients. *Asia Pac J Clin Nutr* 2010; **19**: 458-464 [PMID: 21147705]
- 46 **Kato Y**, Nakao M, Iwasa M, Hasegawa S, Yamada K. Soluble fiber improves management of diarrhea in elderly patients receiving enteral nutrition. *Food Nutr Sci* 2012; **3**: 1547-1552
- 47 **Bittencourt AF**, Martins JR, Logullo L, Shiroma G, Horie L, Ortolani MC, Silva Mde L, Waitzberg DL. Constipation is more frequent than diarrhea in patients fed exclusively by enteral nutrition: results of an observational study. *Nutr Clin Pract* 2012; **27**: 533-539 [PMID: 22730041 DOI: 10.1177/0884533612449488]
- 48 **Russell J**, Bass P. Canine gastric emptying of fiber meals: influence of meal viscosity and antroduodenal motility. *Am J Physiol* 1985; **249**: G662-G667 [PMID: 3002182]
- 49 **Chen HL**, Haack VS, Janecky CW, Vollandorf NW, Marlett JA. Mechanisms by which wheat bran and oat bran increase stool weight in humans. *Am J Clin Nutr* 1998; **68**: 711-719 [PMID: 9734752]
- 50 **Hill LT**. Gut dysfunction in the critically ill - mechanisms and clinical implications. *S Afr Med J* 2013; **29**: 11-15 [DOI: 10.7196/sajcc.148]
- 51 **Thibault R**, Graf S, Clerc A, Delieuvin N, Heidegger CP, Pichard C. Diarrhoea in the ICU: respective contribution of feeding and antibiotics. *Crit Care* 2013; **17**: R153 [PMID: 23883438 DOI: 10.1186/cc12832]
- 52 **Gibson GR**, Probert HM, Loo JV, Rastall RA, Roberfroid MB. Dietary modulation of the human colonic microbiota: updating the concept of prebiotics. *Nutr Res Rev* 2004; **17**: 259-275 [PMID: 19079930 DOI: 10.1079/NRR200479]
- 53 **Bouhnik Y**, Vahedi K, Achour L, Attar A, Salfati J, Pochart P, Marteau P, Flourie B, Bornet F, Rambaud JC. Short-chain fructo-oligosaccharide administration dose-dependently increases fecal bifidobacteria in healthy humans. *J Nutr* 1999; **129**: 113-116 [PMID: 9915885]
- 54 **Tarini J**, Wolever TM. The fermentable fibre inulin increases postprandial serum short-chain fatty acids and reduces free-fatty acids and ghrelin in healthy subjects. *Appl Physiol Nutr Metab* 2010; **35**: 9-16 [PMID: 20130660 DOI: 10.1139/h09-119]
- 55 **Yamada T**, Shimizu K, Ogura H, Asahara T, Nomoto K, Yamakawa K, Hamasaki T, Nakahori Y, Ohnishi M, Kuwagata Y, Shimazu T. Rapid and Sustained Long-Term Decrease of Fecal Short-Chain Fatty Acids in Critically Ill Patients With Systemic Inflammatory Response Syndrome. *JPEN J Parenter Enteral Nutr* 2014; Epub ahead of print [PMID: 24711120 DOI: 10.1177/0148607114529596]
- 56 **Titgemeyer EC**, Bourquin LD, Fahey GC, Garleb KA. Fermentability of various fiber sources by human fecal bacteria in vitro. *Am J Clin Nutr* 1991; **53**: 1418-1424 [PMID: 1852091]
- 57 **Lebak KJ**, Bliss DZ, Savik K, Patten-Marsh KM. What's new on defining diarrhea in tube-feeding studies? *Clin Nurs Res* 2003; **12**: 174-204 [PMID: 12741669 DOI: 10.1177/1054773803012002005]
- 58 **Majid HA**, Emery PW, Whelan K. Definitions, attitudes, and management practices in relation to diarrhea during enteral nutrition: a survey of patients, nurses, and dietitians. *Nutr Clin Pract* 2012; **27**: 252-260 [PMID: 22223668 DOI: 10.1177/0884533611431986]

**P- Reviewer:** Ohshima Y, Park YK, Suchodolski JS, Touil-Boukoffa C  
**S- Editor:** Ma YJ **L- Editor:** A **E- Editor:** Liu XM





Published by **Baishideng Publishing Group Inc**

8226 Regency Drive, Pleasanton, CA 94588, USA

Telephone: +1-925-223-8242

Fax: +1-925-223-8243

E-mail: [bpgooffice@wjgnet.com](mailto:bpgooffice@wjgnet.com)

Help Desk: <http://www.wjgnet.com/esps/helpdesk.aspx>

<http://www.wjgnet.com>



ISSN 1007-9327



9 771007 932045